

Repair Parts Manual
for

COUNTRY
CLIPPER®

Zero Turn Radius Mower

JAZZEE®
ONE

SR100

SR105

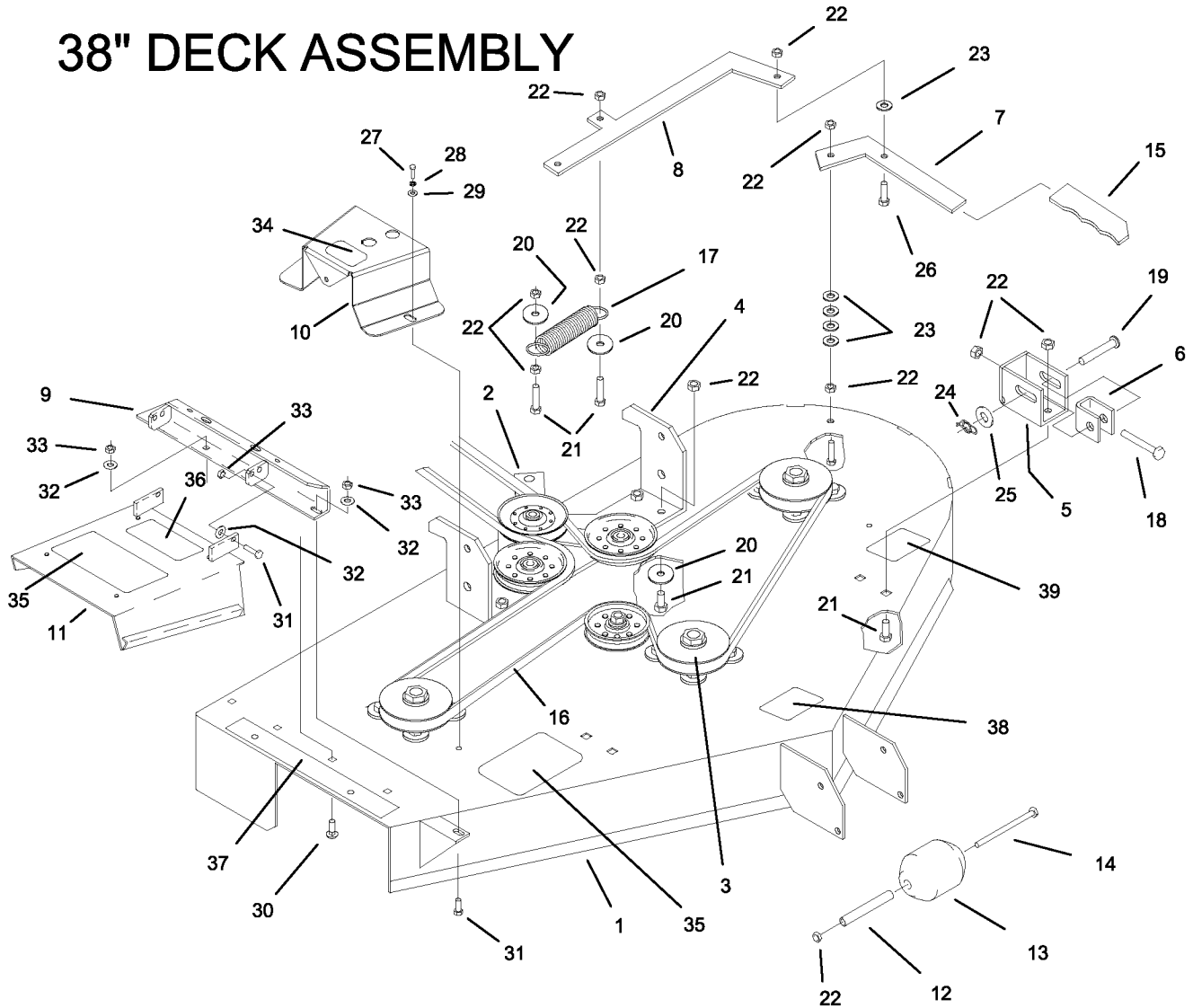
COUNTRY CLIPPER "JAZEE ONE" ZERO TURN RADIUS MOWER

TABLE OF CONTENTS

PAGE.... CONTENTS

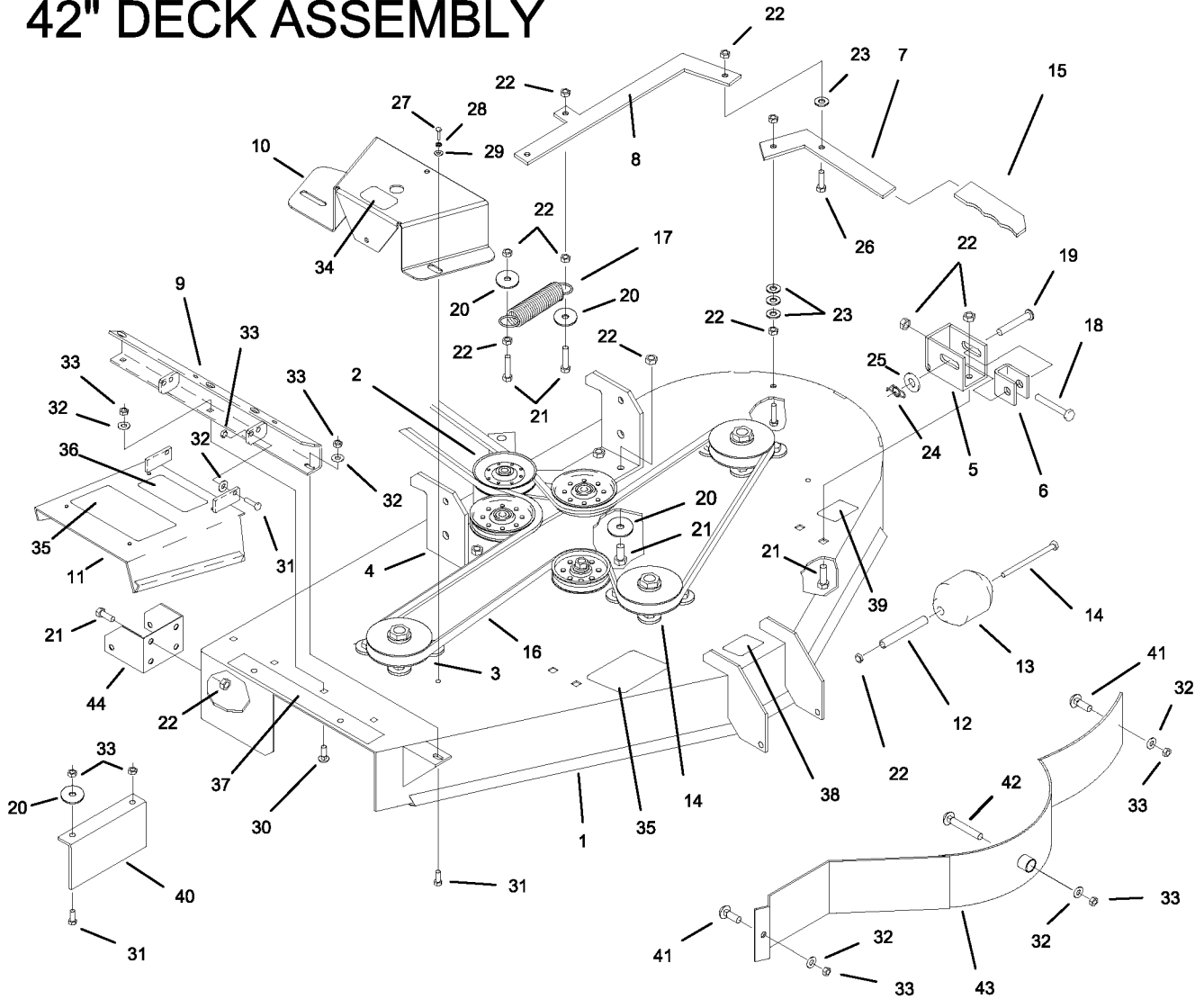
1.38" DECK ASSEMBLY
2.42" DECK ASSEMBLY
3.DECK SPINDLE ASSEMBLY
4.DECK IDLER PULLEYS
5.MOTOR ASSEMBLY
6.HYDRO IDLER PULLEYS
7.HYDRO ASSEMBLY
8.DECK LIFT
9.BRAKES
10.SHIFT CONTROLS
11.JOYSTICK STEERING & RELATED PARTS
12.JOYSTICK STEERING & RELATED PARTS
13.FUEL TANK
14.FRAME & RELATED PARTS
15.DECK MOUNTING ASSEMBLY
16.FRONT END
17.FRONT PANEL & FENDERS
18.SEAT AND RELATED PARTS
19.WIRE HARNESS
20.WIRE HARNESS

38" DECK ASSEMBLY



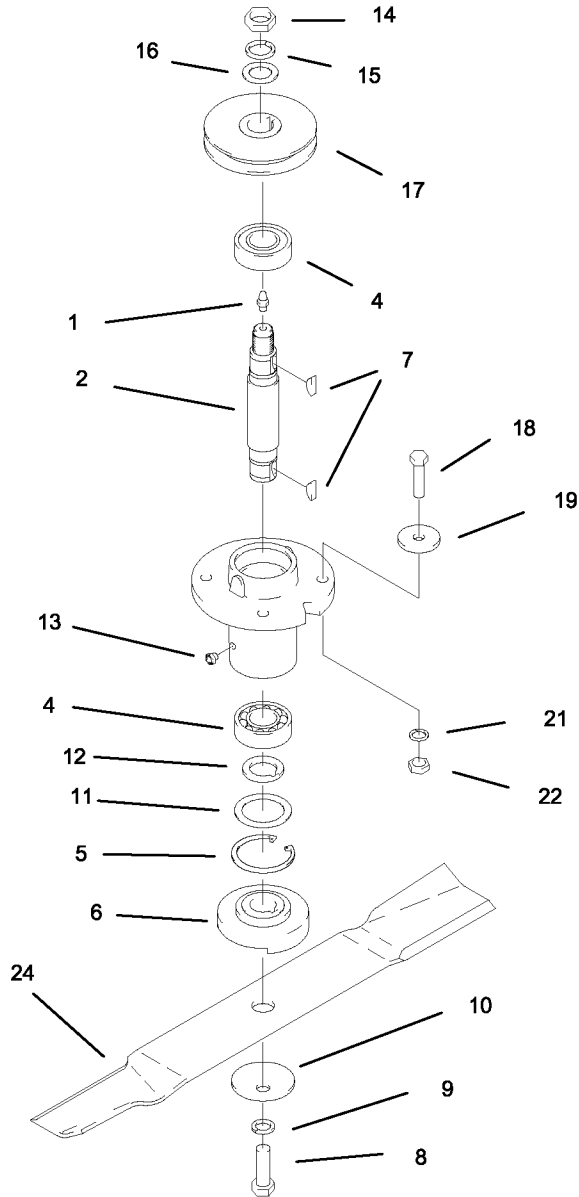
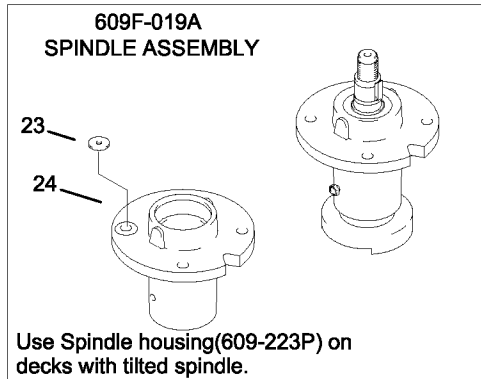
REF NO.	PART NO.	QTY.	DESCRIPTION	REF NO.	PART NO.	QTY.	DESCRIPTION
1	664-019A	1	38" DECK W/DECAL (664A-002A)	21	F-1394	10	3/8-16 X 1" BOLT
2	-----	1	SEE IDLER ARM ASSEMBLY, PAGE 4	22	F-1005-03	18	3/8-16 LOCK NUT
3	-----	3	SEE SPINDLE ASSEMBLY, PAGE 3	23	F-1009-03	5	3/8" FLAT WASHER
4	661-014P	1	REAR HANGER	24	H-2239	2	RUE RING, 1/2"
5	661-016P	2	FRONT HANGER	25	F-1521	2	1/2" WASHER
6	661-015P	2	SHACKLE	26	F-1558	1	3/8-16 X 7/8" BOLT
7	661-045P	1	BELT RELEASE HANDLE	27	F-1015-03	4	1/4-20 X 3/4" BOLT
8	661-046P	1	BELT RELEASE ARM	28	F-1019-01	4	1/4" LOCK WASHER
9	664-016W	1	OUTLET STIFFENER	29	F-1009-01	4	1/4" FLAT WASHER
10	660-051A	2	PULLEY COVER W/DECALS (660-046P)	30	F-1671	4	CARRIAGE BOLT, 5/16 X 3/4"
11	649-054A	1	CHUTE W/ DECALS	31	F-1015-15	3	5/16-15 X 1" BOLT
12	609-183P	3	WHEEL BUSHING	32	F-1009-02	5	5/16 FLAT WASHER
13	H-1948	3	ROLLER, 3-3/4 X 4-13/16	33	F-1125	7	5/16 LOCK NUT
14	F-1741	3	3/8-16 X 6" BOLT	34	P-10935	2	DECAL, "ROTATING DRIVE"
15	H-1926	1	GRIP, PLASTIC	35	P-10941	2	DECAL, "DANGER"
16	D-3727	1	BELT, A-144 KEVLAR	36	P-10937	1	DECAL, "WARNING"
17	H-2092	1	SPRING	37	P-10122	1	DECAL, "MISSING CHUTE"
18	F-1015-27	2	3/8-16 X 1-1/2" BOLT	38	P-11413	1	DECAL, "HOIST POINT"
19	F-1898	2	CLEVIS PIN, 1/2 X 2-3/4" LONG	39	P-10947	1	DECAL, "GREASE"
20	609-034P	6	WASHER				

42" DECK ASSEMBLY



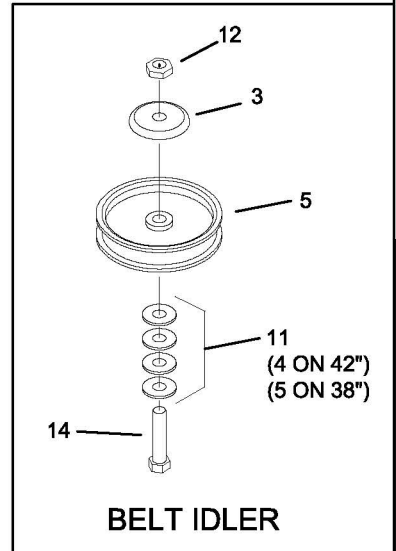
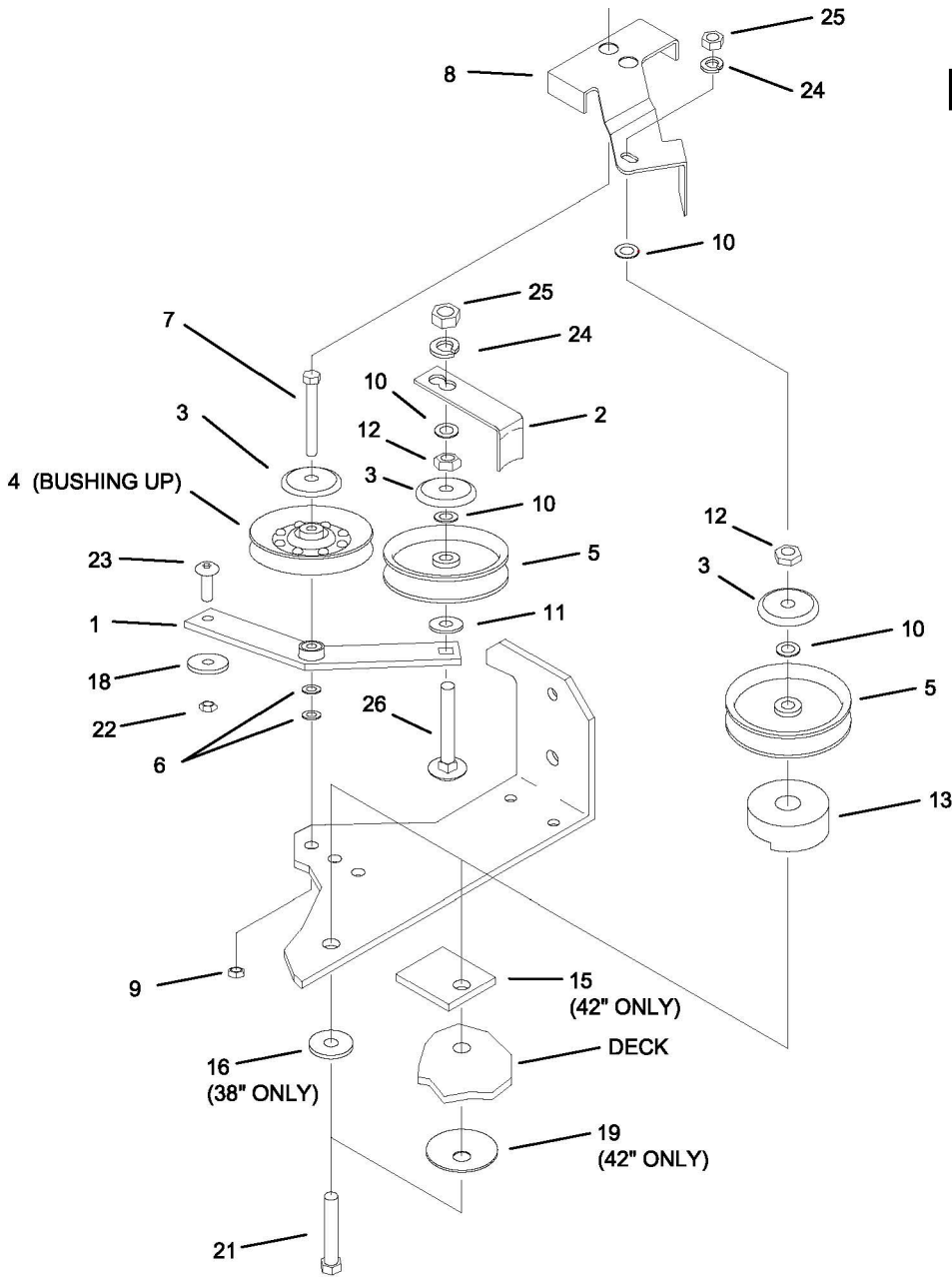
REF NO.	PART NO.	QTY.	DESCRIPTION	REF NO.	PART NO.	QTY.	DESCRIPTION
1	664-020A	1	42" DECK W/DECAL (664B-002A)	23	F-1009-03	4	3/8 FLAT WASHER
2	-----	1	SEE IDLER ARM ASSEMBLY, PAGE 4	24	H-2239	2	RUE RING, 1/2"
3	-----	3	SEE SPINDLE ASSEMBLY, PAGE 3	25	F-1521	2	1/2" WASHER
4	661-014P	1	REAR HANGER	26	F-1558	1	3/8-16 X 7/8" BOLT
5	661-016P	2	FRONT HANGER	27	F-1538	4	1/4-20 X 3/4" BOLT
6	661-015P	2	SHACKLE	28	F-1019-01	4	1/4" LOCK WASHER
7	661-045P	1	BELT RELEASE HANDLE	29	F-1009-01	4	1/4" FLAT WASHER
8	661-046P	1	BELT RELEASE ARM	30	F-1671	4	CARRIAGE BOLT, 5/16 X 3/4"
9	649-012W	1	OUTLET STIFFENER	31	F-1015-15	5	5/16-15 X 1" BOLT
10	660-052A	2	PULLEY COVER W/DECALS (660-047P)	32	F-1009-02	9	5/16 FLAT WASHER
11	649-054A	1	CHUTE W/ DECALS (649-007W)	33	F-1125	12	5/16 LOCK NUT
12	609-183P	3	WHEEL BUSHING	34	P-10935	2	DECAL, "ROTATING DRIVE"
13	H-1948	3	ROLLER, 3-3/4 X 4-13/16	35	P-10941	2	DECAL, "DANGER"
14	F-1741	3	3/8-16 X 6" BOLT	36	P-10937	1	DECAL, "WARNING"
15	H-1926	1	GRIP, PLASTIC	37	P-10122	1	DECAL, "MISSING CHUTE"
16	D-3733	1	BELT, A-158" KEVLAR	38	P-11413	1	DECAL, "HOIST POINT"
17	H-2092	1	SPRING	39	P-10947	1	DECAL, "GREASE"
18	F-1015-27	2	3/8-16 X 1-1/2" BOLT	40	651-023P	1	AIR BAFFLE
19	F-1898	2	CLEVIS PIN, 1/2 X 2-3/4" LONG	41	F-1823	2	1/4-20 X 3/4" CARRIAGE BOLT
20	609-034P	7	WASHER	42	F-1935	1	1/4-20 X 1-1/2" CARRIAGE BOLT
21	F-1394	18	3/8-16 X 1" BOLT	43	651-022W	1	DUST BAFFLE
22	F-1005-03	28	3/8-16 LOCK NUT	44	609-182P	2	SCALPER BRACKET

DECK SPINDLE ASSEMBLY



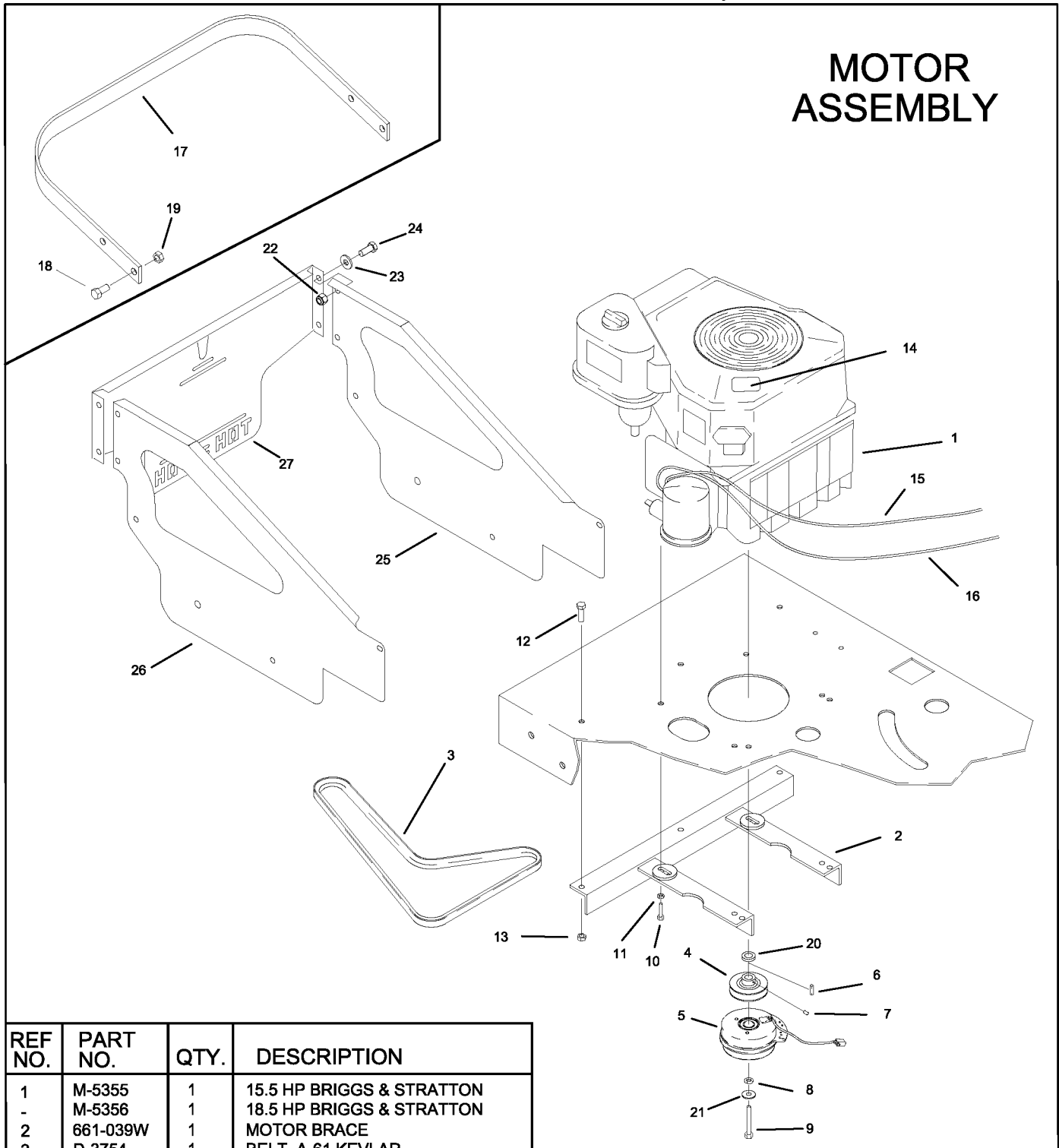
REF NO.	PART NO.	QTY.	DESCRIPTION	REF NO.	PART NO.	QTY.	DESCRIPTION
-	660-045A	1	SPINDLE ASSEMBLY	16	F-1510	1	3/4" WASHER, FLAT STD.
1	H-1056	1	GREASE FITTING	17	D-3732-01	1	PULLEY, 1 GROOVE
2	609-162P	1	SPINDLE SHAFT	18	F-1572	4	3/8-24 X 1-1/2" HHCS GR. 5
3		-		19	609-034P	4	SPINDLE SPACER REINFORCEMENT
4	D-3058	2	BEARING, #6205-2RS	20	609D-156P	1	PULLEY, 2 GROOVE 52"
5	H-1893	1	SNAP RING INT. 52MM	-	609C-156P	-	PULLEY, 2 GROOVE 60"
6	609-152P	1	BLADE SPACER	21	F-1019-03	4	3/8" LOCK WASHER
7	D-1004-02	2	KEY, WOODRUF, 1/4 X 3/4	22	F-1573	4	3/8-24 LOCKNUT, M-F
8	F-1526	1	1/2-13 X 1-1/2" HHCS GR. 5	23	629-237P	2	10GA WASHER
9	F-1464	1	1/2" LOCK WASHER	24	H-2423	1	BLADE, 13-3/4" HIGH L. CUT 38"
10	F-1507	1	WASHER, 1/2" CUPPED	-	H-1715	-	BLADE, 15" HIGH L. CUT 42"
11	609-151P	1	WASHER, SEAL	-		-	OPTIONAL BLADES
12	609-073P	1	ARBBER SPACER	-	H-2422	-	BLADE, 13-3/4" LOW L. CUT 38"
13	H-2066	1	GREASE VENT 5 LBS.	-	H-2430	-	GATOR BLADE, 13-3/4" 38"
14	F-1461	1	3/4-16 NUT, HEX JAM	-	H-1665	-	BLADE, 15" LOW L. CUT 42"
15	F-1463	1	3/4" LOCK WASHER	-	H-2013	-	GATOR BLADE, 15" 42"

DECK IDLERS



REF NO.	PART NO.	QTY.	DESCRIPTION
1	661-093A	1	IDLER ARM (661-048W)
2	660-060P	1	BELT KEEPER
3	620-201P	4	BEARING CAP
4	D-3758	1	V-IDLER PULLEY
5	D-3338	3	FLAT IDLER PULLEY
6	F-1009-03	2	3/8 FLAT WASHER
7	F-1537	1	3/8-16 X 3" BOLT
8	664-025P	1	BELT CONTROL PLATE
9	F-1005-03	1	3/8-16 LOCK NUT
10	F-1521	4	1/2" FLAT WASHER, NARROW
11	F-1009-05	6	1/2" FLAT WASHER (5 ON 42")
12	F-1005-05	3	1/2-13 LOCK NUT
13	661-081P	1	SPACER, IDLER PULLEY
14	F-1664	1	1/2-13 X 2-1/4" BOLT
15	661-080P	1	PLATE, IDLER PULLEY (42" ONLY)
16	664-022P	1	WASHER 8 GA. X 1.625 (38" ONLY)
17	659-024P	1	PIN
18	609-034P	1	WASHER
19	F-1507	1	CUPPED WASHER (42" ONLY)
20	D-3785	1	5/8" BORE BUSHING (SR-105)
21	F-1828	1	1/2-13 X 3-1/2" BOLT
22	F-1125	1	5/16-18 STOVER LOCK NUT
23	F-1795	1	5/16 X 1-1/2 BUTTON HEAD
24	F-1464	2	1/2" LOCK WASHER
25	F-1011-05	2	1/2-13 NUT
26	F-1927	1	1/2-13 X 2-3/4 CARRIAGE BOLT

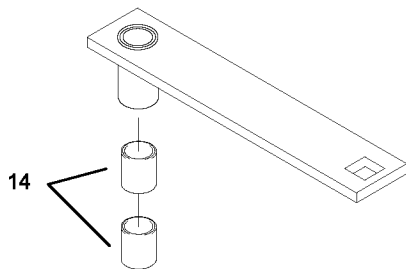
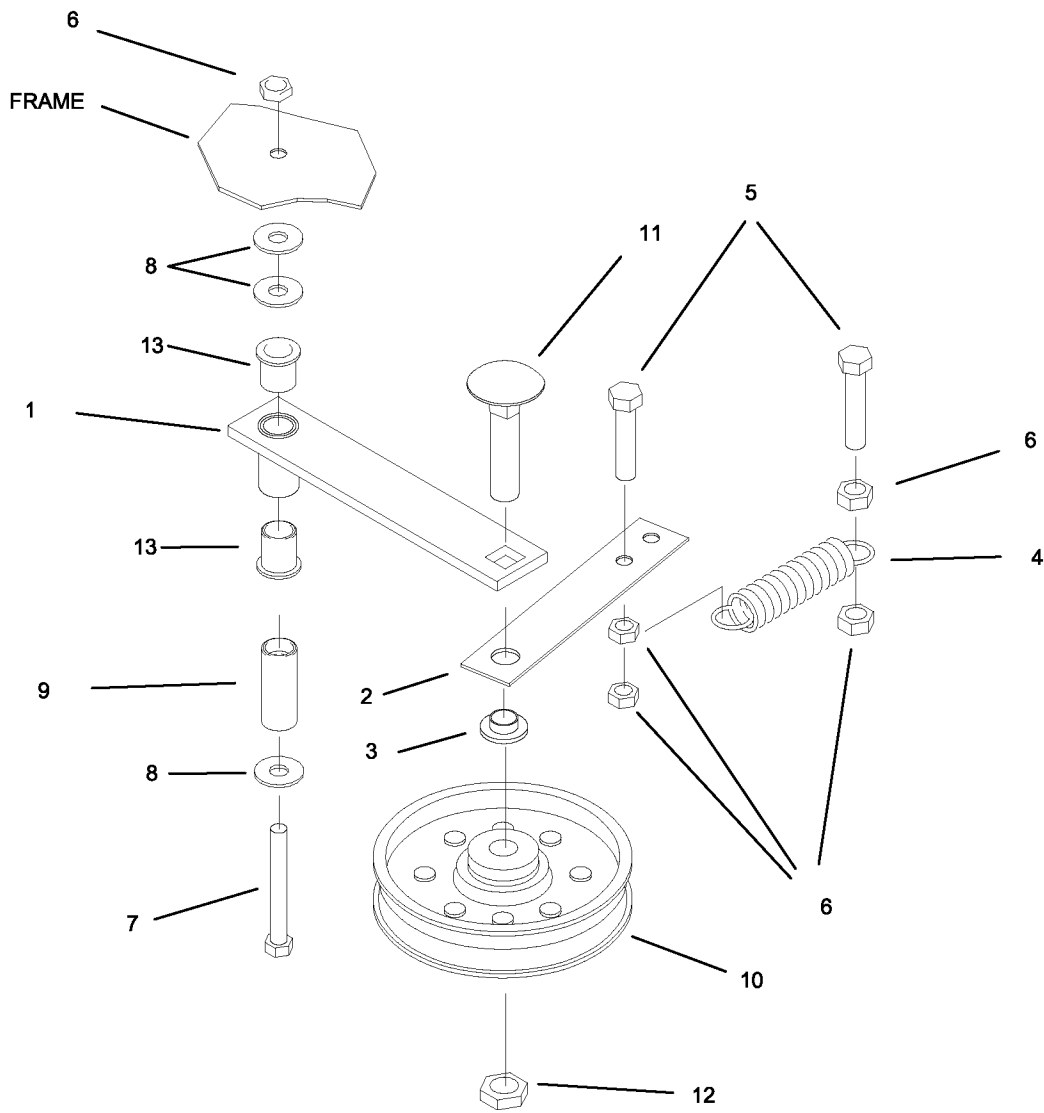
MOTOR ASSEMBLY



REF NO.	PART NO.	QTY.	DESCRIPTION
1	M-5355	1	15.5 HP BRIGGS & STRATTON
-	M-5356	1	18.5 HP BRIGGS & STRATTON
2	661-039W	1	MOTOR BRACE
3	D-3754	1	BELT, A-61 KEVLAR
4	D-3726	1	MOTOR PULLEY
5	E-6317	1	CLUTCH
6	621-113P	1	KEY
7	F-1007-22	1	SET SCREW
8	F-1019-04	1	7/16" LOCK WASHER
9	F-1904	1	7/16-20 X 2-1/2" GR. 5
10	F-1015-17	4	5/16-18 X 1-1/2" BOLT
11	F-1019-02	4	5/16 LOCK WASHER
12	F-1015-15	3	5-16 X 1" BOLT
13	F-1125	3-7	5/16 LOCK NUT
14	P-10077	1	DECAL, "CLEAN"
15	H-2403	1	CHOKE CABLE
16	H-2402	1	THROTTLE CABLE

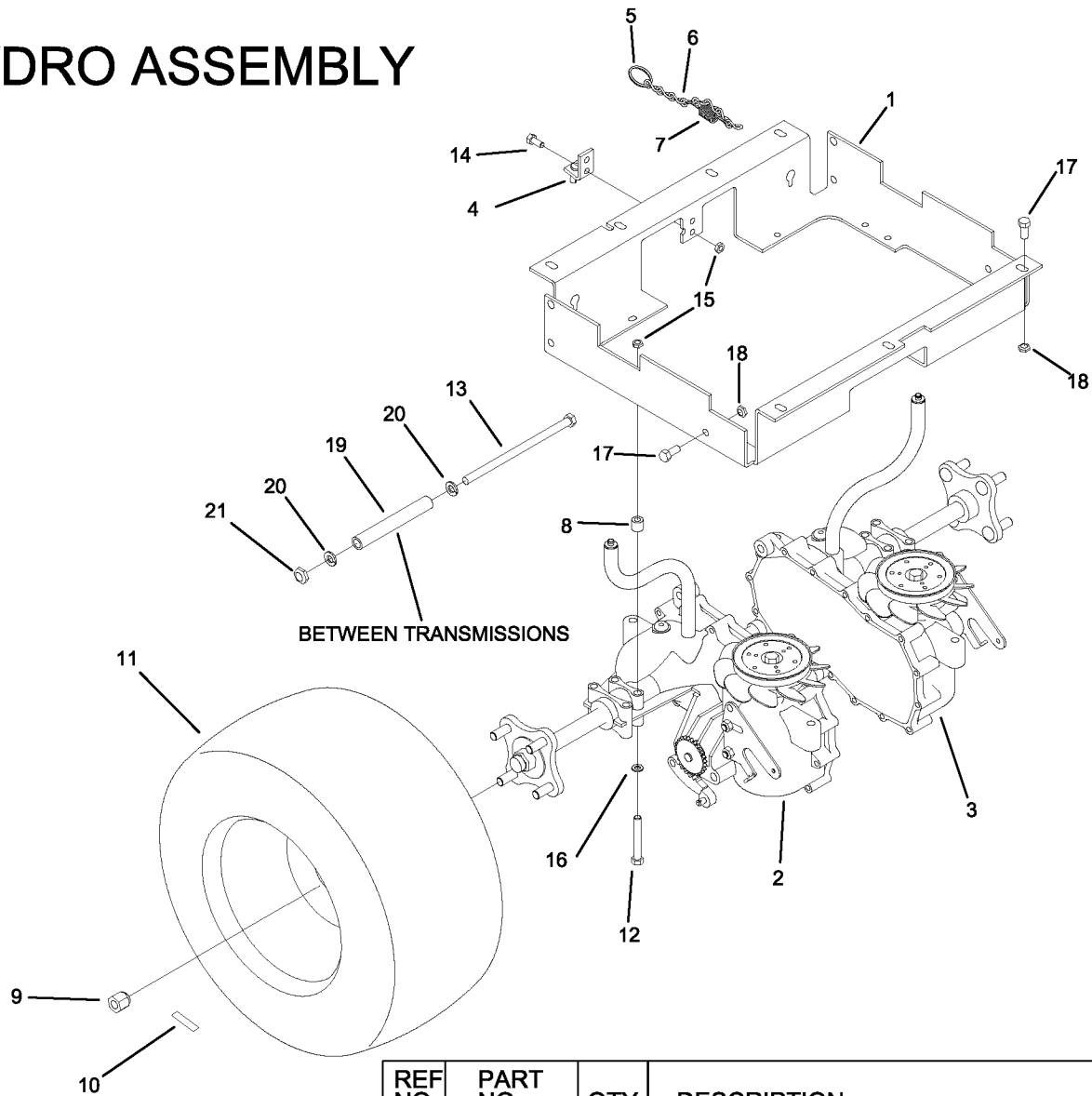
REF NO.	PART NO.	QTY.	DESCRIPTION
17	661-058P	1	MOTOR GUARD (SR-100 ONLY)
18	F-1759	4	1/2-13 X 1" BOLT (SR-100 ONLY)
19	F-1005-05	4	1/2-13 LOCK NUT (SR-100 ONLY)
20	606-303P	1	1" X 10GA WAKER
21	F-1009-03	1	3/8" FLAT WASHER
22	F-1005-03	4	3/8-16 X 7/8" BOLT
23	F-1009-02	4	5/16" FLAT WASHER
24	F-1558	4	3/8-16 STOVER LOCK NUT
25	661-085P	1	ENGINE GUARD RH SIDE PANEL
26	661-086P	1	ENIGNE GUARD LH SIDE PANEL
27	659-135P	1	ENGINE GUARD REAR PANEL

HYDRO IDLER



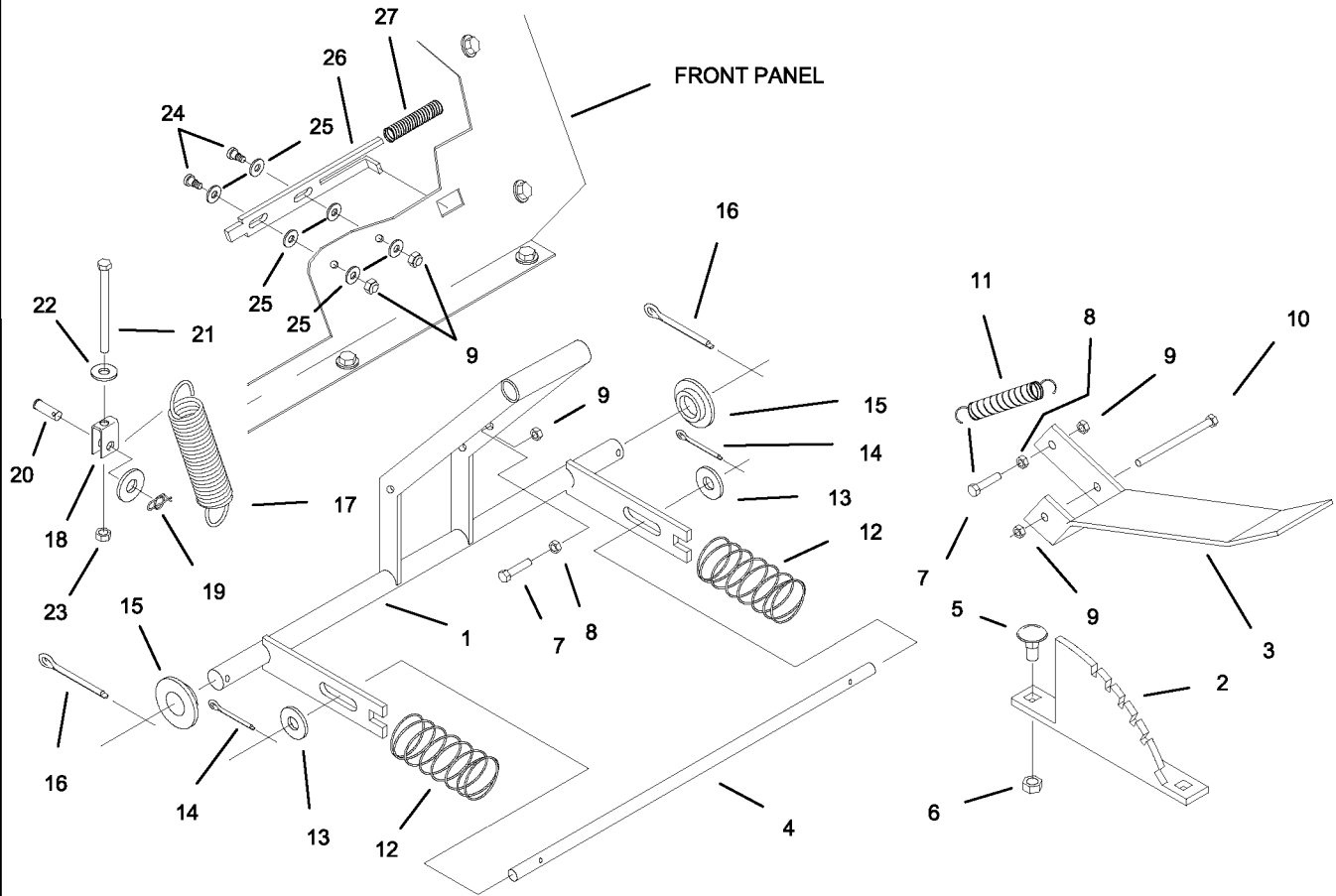
REF NO.	PART NO.	QTY.	DESCRIPTION
1	661-060W	1	IDLER ARM
2	622-047P	1	SPRING EXTENSION
3	622-048P	1	STAND
4	H-2092	1	SPRING
5	F-1879	2	5/16-18 X 1-1/4" BOLT
6	F-1125	5	5/16-18 LOCK NUT
7	F-1820	1	5/16-18 X 2-1/4" BOLT
8	F-1009-02	3	5/16 FLAT WASHER
9	621-103P	1	PIN
10	D-3617	1	FLAT IDLER
11	F-1965	1	1/2-13 X 1-1/2" CARRIAGE BOLT
12	F-1966	1	1/2" THIN NUT, NYLOC
13	D-3730	2	5/8" BORE BUSHING
14	D-3573	2	DXF BUSHING

HYDRO ASSEMBLY



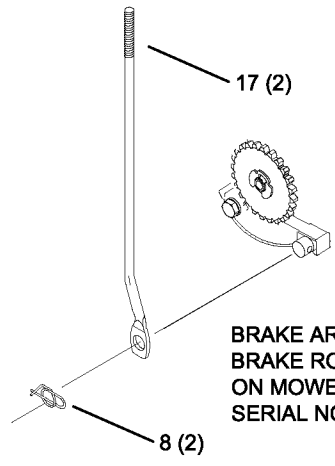
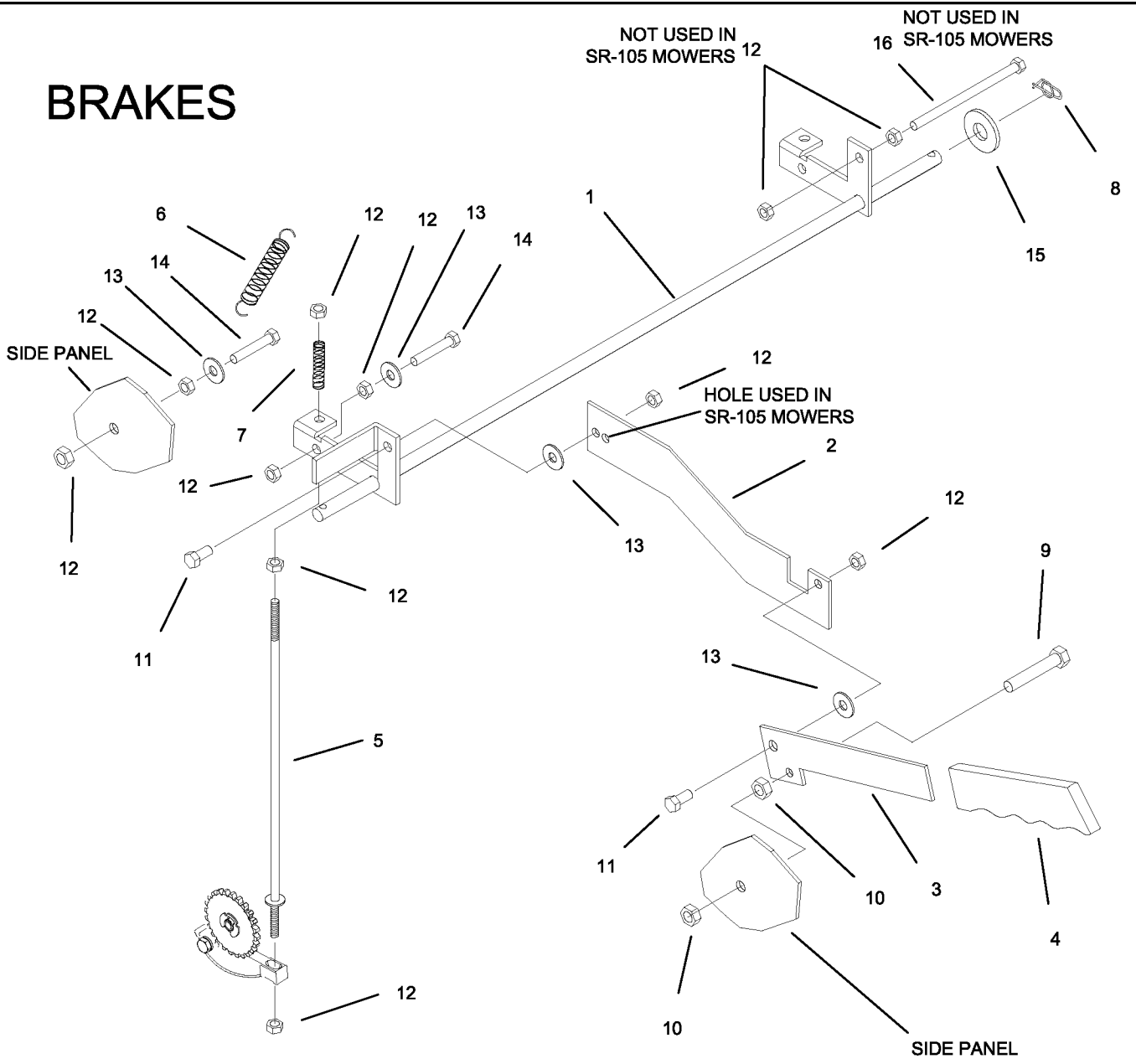
REF NO.	PART NO.	QTY.	DESCRIPTION
1	661-003P	1	HYDRO MOUNT
2	D-3753-01	1	TRANSMISSION RH
-	D-3783-01	1	TRANSMISSION RH (S/N661G5, S/N661H19 & AFTER)
3	D-3753-02	1	TRANSMISSION LH
-	D-3783-02	1	TRANSMISSION LH (S/N661G5, S/N661H19 & AFTER)
4	661-072W	1	CLUTCH STOP WELDMENT
5	H-2345	2	RING
6	661-066P	2	CHAIN
7	H-1319	2	SPRING
8	H-2428	4	SPACER
9	F-1499	8	LUG NUT
10	P-11384	2	DECAL, TIRE PRESSURE
11	D-3729	2	WHEEL/TIRE, 18 X 8.5 X 8 (42" DECK)
-	D-3761	2	WHEEL/TIRE, 18 X 6.5 X 8 (38" DECK)
12	F-1820	8	5/16-18 X 2-1/4" BOLT
13	F-1960	3	7/16-14 X 8" BOLT
-	F-2025	3	7/16-14 X 8-1/2" BOLT (S/N661G5, S/N661H19 & AFTER)
14	F-1546	2	5/16-18 X 3/4" BOLT
15	F-1125	10	5/16-18 LOCK NUT
16	F-1009-02	4	5/16 LOCK WASHER
17	F-1558	11	3/8-16 X 7/8" BOLT
18	F-1005-03	11	3/8-16 LOCK NUT
19	661-025P	3	HYDRO BRACE
20	F-1019-04	3	7/16-14 LOCK WASHER
-	F-1019-04	6	7/16-14 LOCK WASHER (S/N661G5, S/N661H19 & AFTER)
21	F-1005-04	3	7/16-14 NUT (S/N661G5, S/N661H19 & AFTER)

DECK LIFT



REF NO.	PART NO.	QTY.	DESCRIPTION	REF NO.	PART NO.	QTY.	DESCRIPTION
1	661-013W	1	DECK LIFT ARM	15	H-2414	2	PLASTIC BUSHING
2	661-009P	1	DECK ADJUSTMENT PLATE	16	F-1728	2	COTTER PIN, 3/16 X 2"
3	661-008P	1	DECK LIFT LATCH	17	H-2100	2	SPRING, DECK LIFT
4	661-012P	1	DECK LIFT ROD	18	647-030P	2	YOKE
5	F-1274	2	3/8-16 X 1" CARRIAGE BOLT	19	F-1492	2	RUE RING, 5/16"
6	F-1005-03	2	3/8 LOCK NUT	20	F-1444	2	CLEVIS PIN, 3/8 X 1-5/16"
7	F-1864	2	1/4 X 1-3/4" BOLT	21	F-1682	2	5/16-18 X 4'
8	F-1011-01	2	1/4" PLAIN NUT	22	F-1009-02	2	5/16" FLAT WASHER
9	F-1158	4	1/4-20 LOCK NUT	23	F-1125	2	5/16" LOCK NUT
10	F-1020-07	1	1/4-20 X 4" BOLT	24	F-1916	2	SHOULDER BOLT, 5/16 X 3/8"
11	H-2417	1	EXTENSION SPRING	25	F-1009-01	6	1/4" FLAT WASHER
12	H-2425	2	SPRING, 1.637 OD X 5"	26	661-032P	1	SAFETY BAR
13	F-1521	2	1/2" WASHER, NARROW	27	H-2426	1	SPRING
14	H-1376	2	COTTER PIN, 1/8 X 1-1/2"				

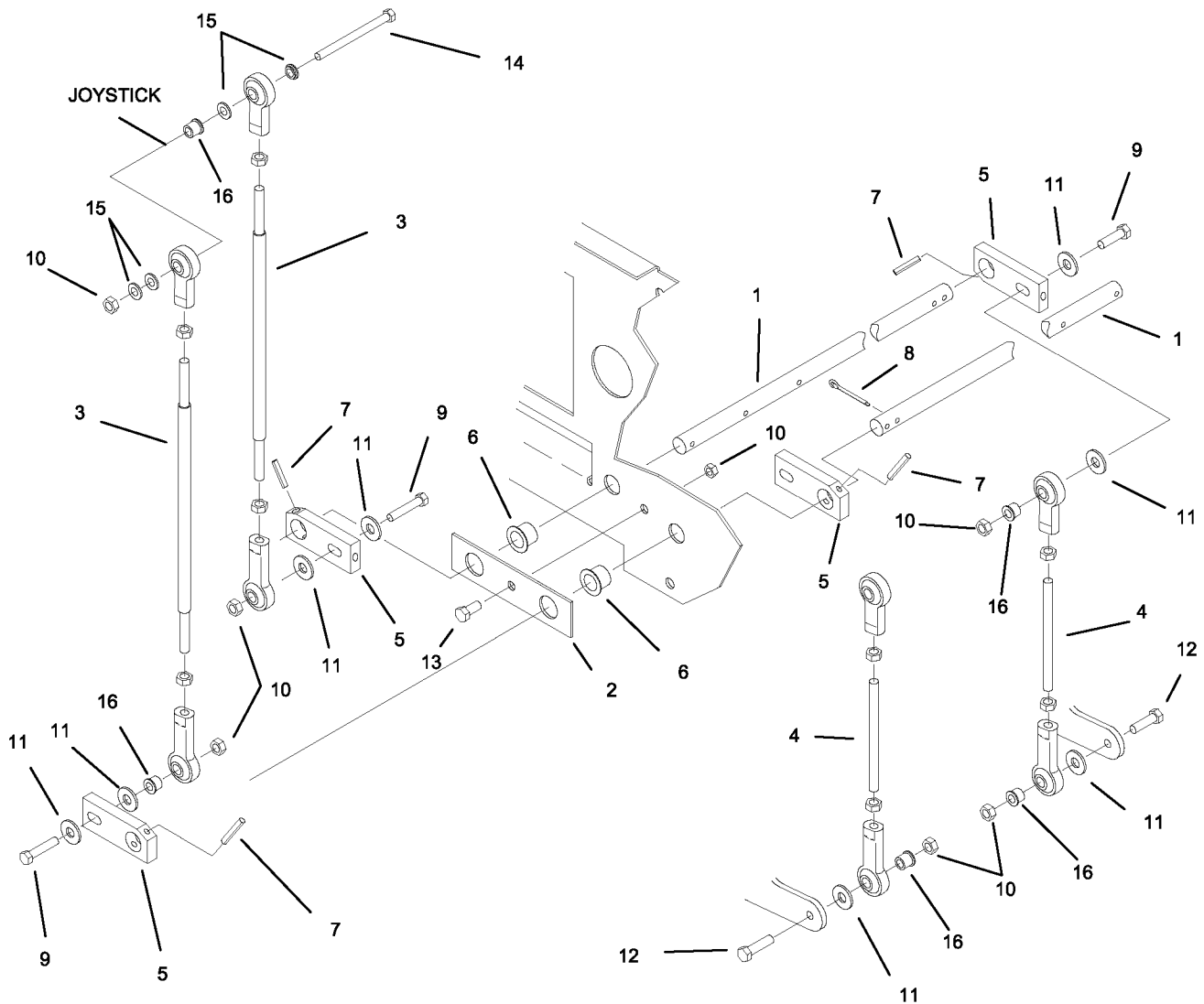
BRAKES



BRAKE ARM AND
BRAKE ROD USED
ON MOWERS AFTER
SERIAL NO. #19561 (661D-001A)
#19536 (661C-001A)

REF NO.	PART NO.	QTY.	DESCRIPTION
1	661-023W	1	BRAKE ROD WLDT.
2	661-020P	1	BRAKE LOCK
3	661-021P	1	BRAKE HANDLE
4	H-1926	1	PLASTIC GRIP
5	H-2424	2	BRAKE PULL
6	H-2417	1	EXTENSION SPRING
7	H-1637	2	COMPRESSION SPRING
8	F-1492	2	RUE RING, 3/8"
9	F-1015-17	1	5/16-18 X 1-1/2" BOLT
10	F-1125	2	5/16-18 LOCK NUT
11	F-1015-02	2	1/4-20 X 3/4" BOLT
12	F-1158	14	1/4-20 LOCK NUT
13	F-1009-01	4	1/4" FLAT WASHER
14	F-1539	2	1/4-20 X 1-1/4" BOLT
15	F-1009-03	2	3/8" FLAT WASHER
16	F-1093	1	1/4-20 X 5" BOLT
17	H-2452	2	BENT BRAKE LINK BAR

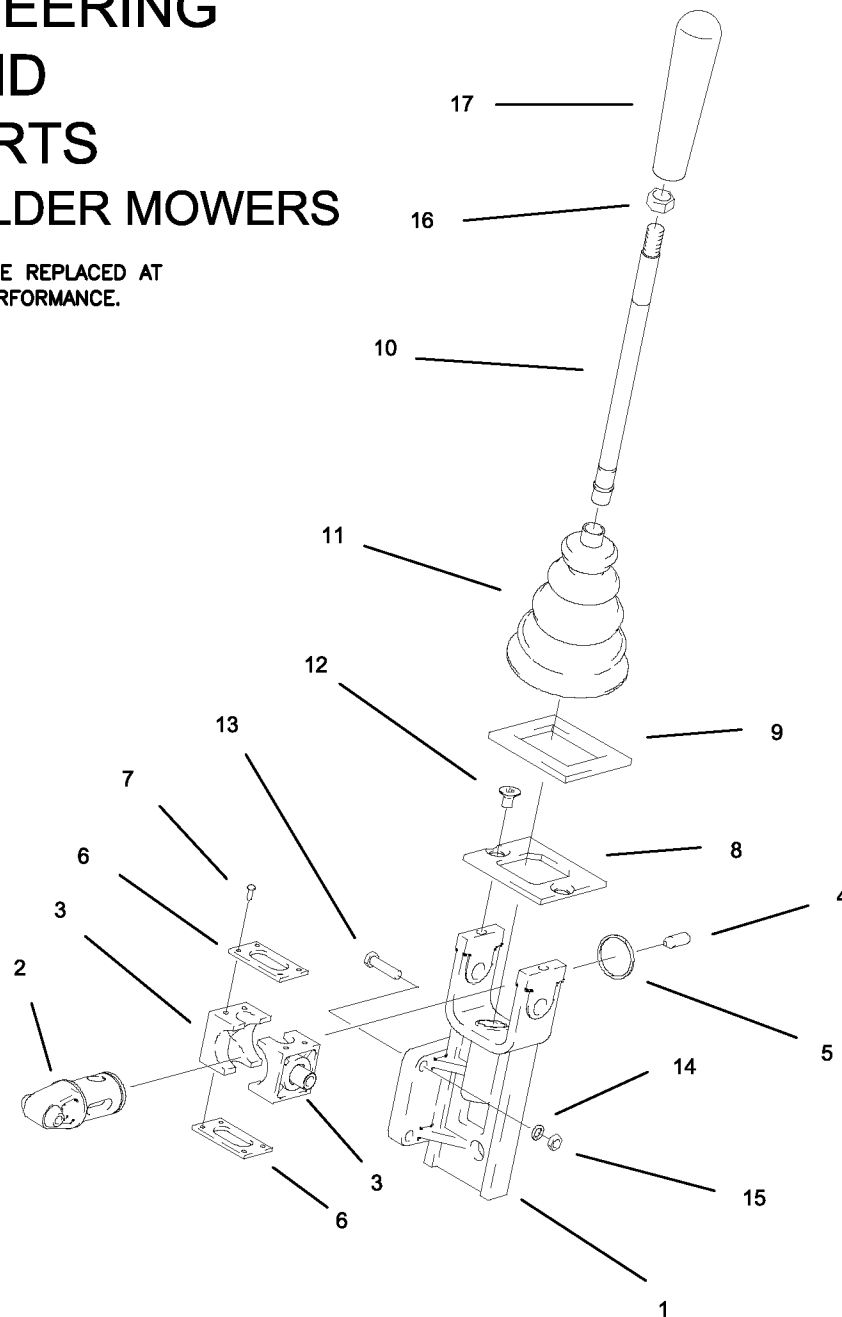
SHIFT CONTROLS



REF NO.	PART NO.	QTY.	DESCRIPTION
1	661-028P	2	SHIFT ROD
2	661-029P	2	RETAINER PLATE
3	659-027P	2	LINK ROD
—	659-113P	2	LINK ROD (S/N661G5, S/N661H19 & AFTER)
4	661-063P	2	SHORT LINK ROD
—	659-127P	2	SHORT LINK ROD (S/N661G5, S/N661H19 & AFTER)
5	625-030P	4	SWIVEL ARM
6	D-3730	4	BUSHING
7	F-1503	4	ROLL PIN
8	F-1376	4	COTTER PIN
9	F-1539	4	1/4-20 X 1-1/4" BOLT
—	F-1710	4	1/4-20 X 1-1/2" BOLT (S/N661G5, S/N661H19 & AFTER)
10	F-1158	9	1/4-20 LOCK NUT
11	F-1009-01	10	1/4" FLAT WASHER
12	F-1538	2	1/4-20 X 3/4" BOLT
13	F-1015-02	2	1/4-20 X 5/8" BOLT
14	F-1765	1	1/4-20 x 3" BOLT
15	H-1989	6	BUSHING, BALL JOINT
16	H-2465	4	3/8 x 1/4 ADAPTER (S/N661G5, S/N661H19 & AFTER)

JOYSTICK STEERING CONTROL AND RELATED PARTS FOR SR100 & OLDER MOWERS

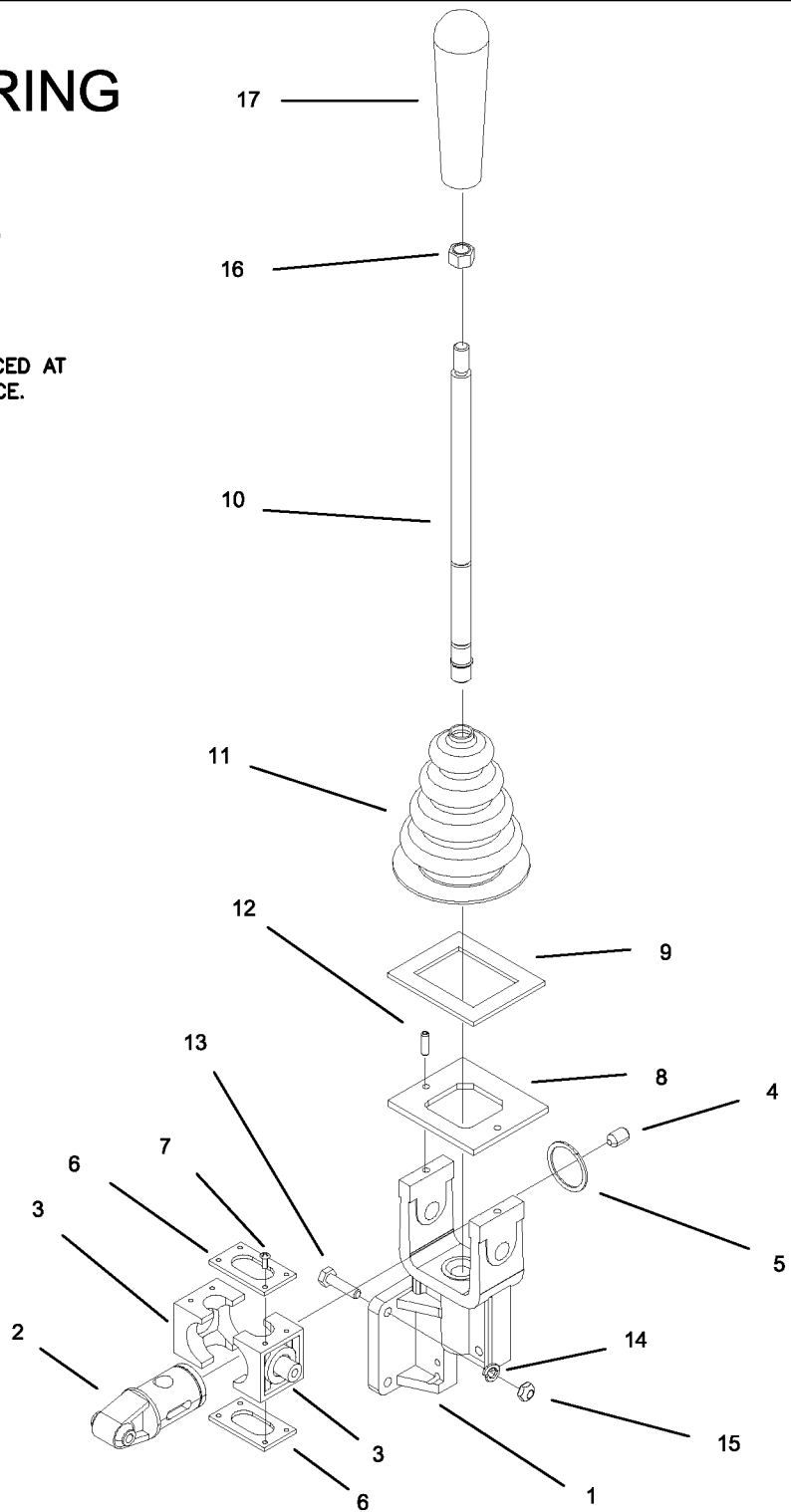
NOTE; ITEM'S #2 AND #3 MUST BE REPLACED AT THE SAME TIME FOR MAXIMUM PERFORMANCE.



REF NO.	PART NO.	QTY.	DESCRIPTION	REF NO.	PART NO.	QTY.	DESCRIPTION
-	636-141A	1	JOYSTICK ASSEMBLY	9	F-1947	1	GASKET, FOAM
1	621-124P	1	JOYSTICK YOKE	10	621-140A	1	JOYSTICK SHAFT ASSEMBLY
2	H-1992	1	PIVOT SHAFT	11	H-1991	1	BOOT, BELLOWS
3	619-307P	2	PIVOT BLOCK	12	F-1714	2	1/4-20 X 1/2" FHCS GR. 5
4	F-1120	1	BALL PLUNGER	13	F-1015-05	3	1/4-20 X 1" HHCS GR. 5
5	H-1997	1	SNAP RING, SPIRLOCK	14	F-1019-01	3	1/4" LOCK WASHER
6	619-306P	2	PIVOT BLOCK PLATE	15	F-1158	4	1/4-20 LOCK NUT
7	F-1624	8	#6-32 X 3/8" SCREW SLOT	16	F-1011-03	1	3/8-16 NUT, JAM
8	636-140P	1	JOYSTICK TOP PLATE	17	H-2317	1	GRIP, HANDLE

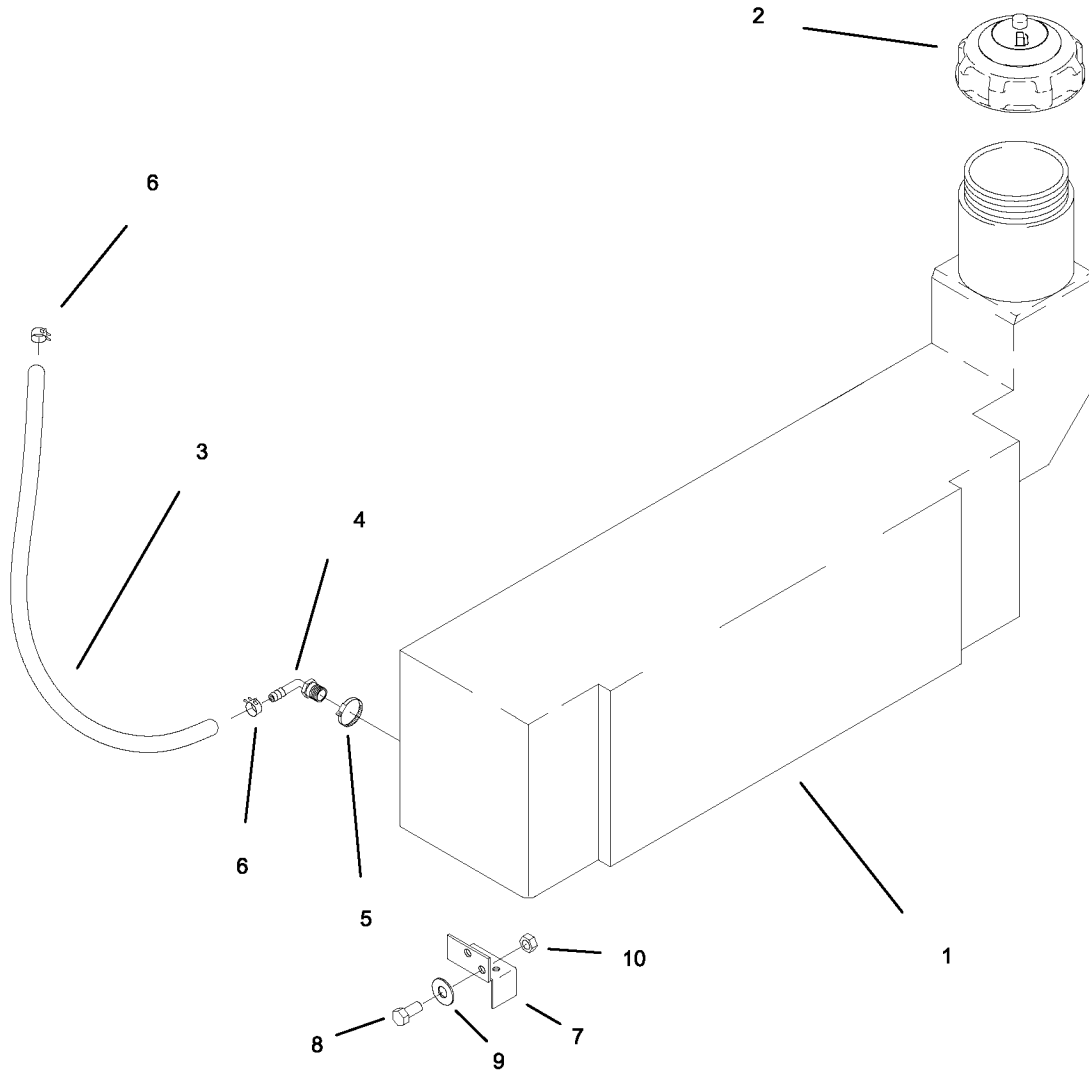
JOYSTICK STEERING CONTROL AND RELATED PARTS FOR SR105

NOTE: ITEM'S #2 AND #3 MUST BE REPLACED AT THE SAME TIME FOR MAXIMUM PERFORMANCE.



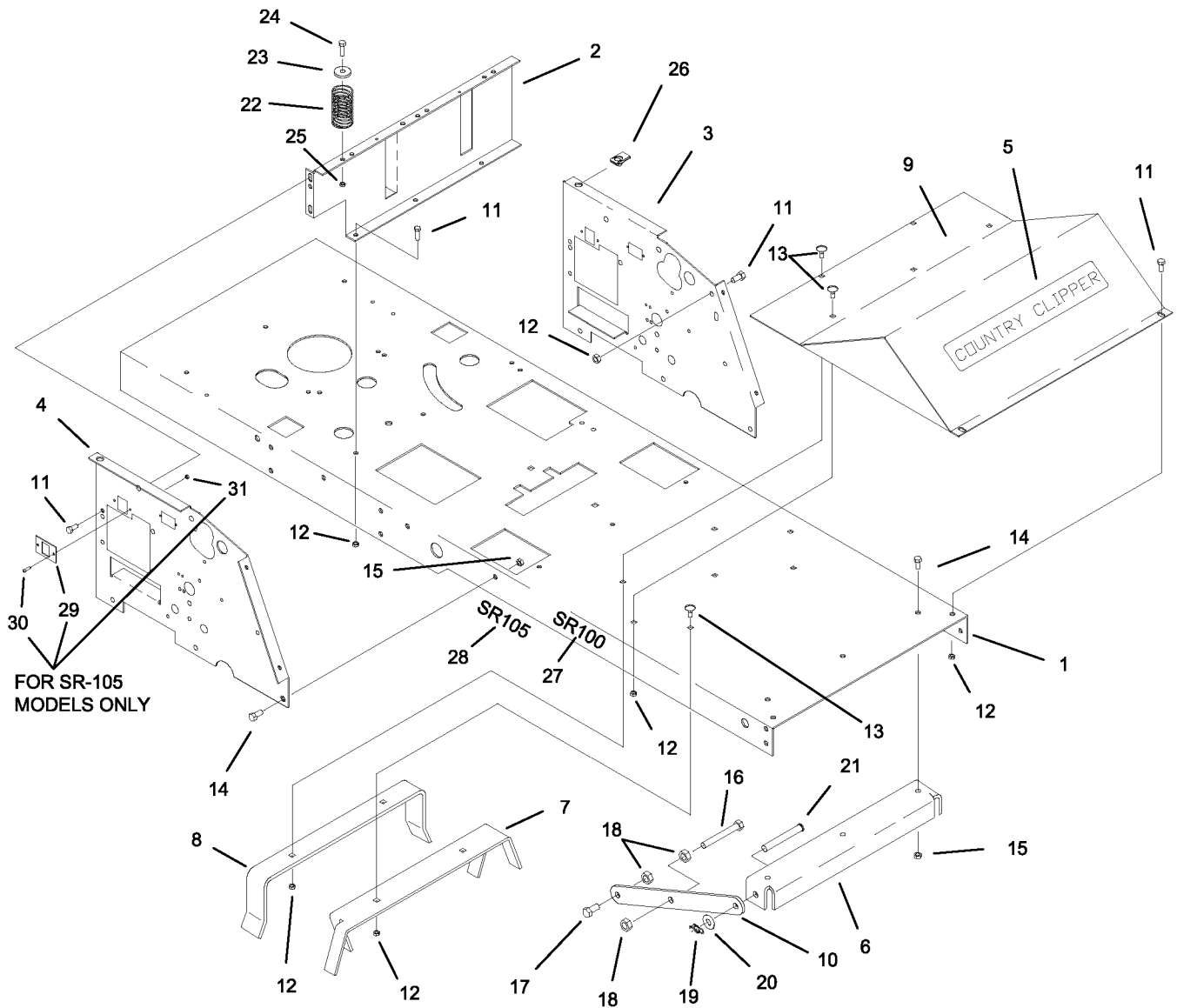
REF NO.	PART NO.	QTY.	DESCRIPTION	REF NO.	PART NO.	QTY.	DESCRIPTION
-	647-122A	1	JOYSTICK ASSEMBLY	9	H-1947	1	GASKET, FOAM
1	659-144P	1	JOYSTICK YOKE	10	621-140A	1	JOYSTICK SHAFT ASSEMBLY
2	H-1992	1	PIVOT SHAFT	11	H-1991	1	BOOT, BELLOWS
3	H-1993	2	PIVOT BLOCK	12	F-1999	2	ROLL PIN, 3/16 X 5/8
4	F-1120	1	BALL PLUNGER	13	F-1015-05	3	1/4-20 X 1" HHCS GR. 5
5	H-1997	1	SNAP RING, SPIRLOCK	14	F-1019-01	3	1/4" LOCK WASHER
6	619-306P	2	PIVOT BLOCK PLATE	15	F-1158	4	1/4-20 LOCK NUT
7	F-1624	8	#6-32 X 3/8" SCREW SLOT	16	F-1011-03	1	3/8-16 NUT, JAM
8	659-129P	1	JOYSTICK TOP PLATE	17	H-2317	1	GRIP, HANDLE

FUEL TANK



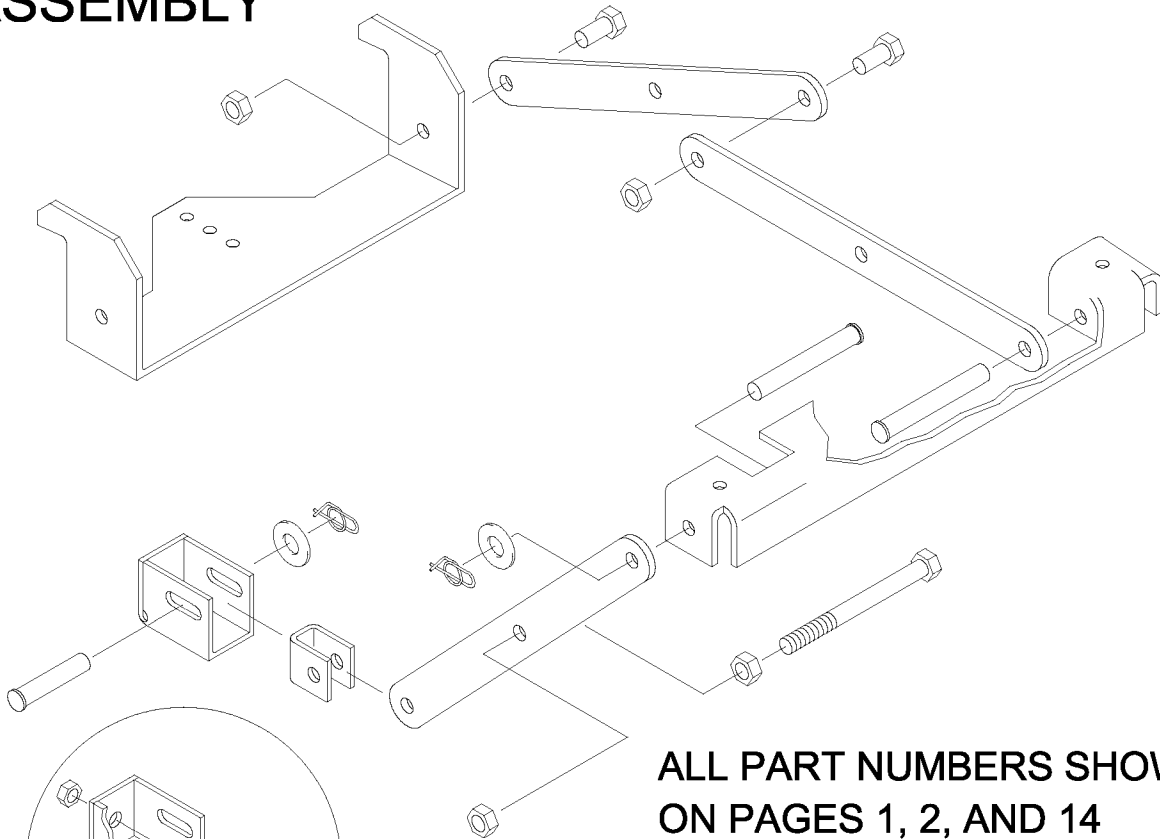
REF NO.	PART NO.	QTY.	DESCRIPTION
1	H-2407	1	FUEL TANK
2	H-2232	1	FUEL CAP
3	661-070P	1	FUEL LINE, 34"
4	H-1646	1	HOSE BARB, 90°
5	H-1952	1	HOSE CLAMP
6	H-1687	2	HOSE CLAMP
7	659-066P	1	CLAMP
8	F-1546	1	5/16-18 X 3/4" BOLT
9	F-1009-02	1	5/16 FLAT WASHER
10	F-1125	1	LOCK NUT

FRAME AND RELATED PARTS FOR SR100 & SR105



REF NO.	PART NO.	QTY.	DESCRIPTION	REF NO.	PART NO.	QTY.	DESCRIPTION
1	661-002P	1	FRAME	17	F-1759	2	1/2-13 X 1" BOLT
2	661-082P	1	SEAT SUPPORT	18	F-1005-05	6	1/2-13 LOCK NUT
3	661-004P	1	SIDE PANEL, LH	19	H-2239	2	RUE RING, 1/2"
4	661-005P	1	SIDE PANEL, RH	20	F-1521	2	1/2" WASHER, NARROW
5	P-12097	1	DECAL, COUNTRY CLIPPER	21	F-1890	2	CLEVIS PIN, 1/2 X 3-1/2"
6	661-018P	1	PIVOT PLATE	22	H-1920	3	SPRING, SEAT
7	661-019P	1	DRAG BAR LOCATOR	23	620-050P	3	WASHER
8	661-035P	1	REAR BAR LOCATOR	24	F-1538	3	1/4-20 X 3/4" BOLT
9	661-083A	1	FOOT DECK W/ DECALS (661-062W)	25	F-1158	3	1/4-20 LOCK NUT
10	661-017P	6	DRAG BAR	26	F-1866	1	U-NUT, 5/16-18
11	F-1546	9	5/16-18 X 3/4" BOLT	27	P-12085	2	DECAL, SR100 (SR100 MODELS ONLY)
12	F-1125	15	5/16 LOCK NUT	28	P-12185	2	DECAL, SR105 (SR105 MODELS ONLY)
13	F-1671	6	5/16-18 X 3/4" CARRIAGE BOLT	29	661-087P	1	FUSE MOUNT PLATE
14	F-1558	11	3/8-16 X 7/8" BOLT	30	F-1054	2	#6-32 X 5/8 MACHINE SCREW
15	F-1005-03	11	3/8 LOCK NUT	31	F-1535	2	#6-32 NYLOC NUT
16	F-1251	2	1/2-13 X 4" BOLT				

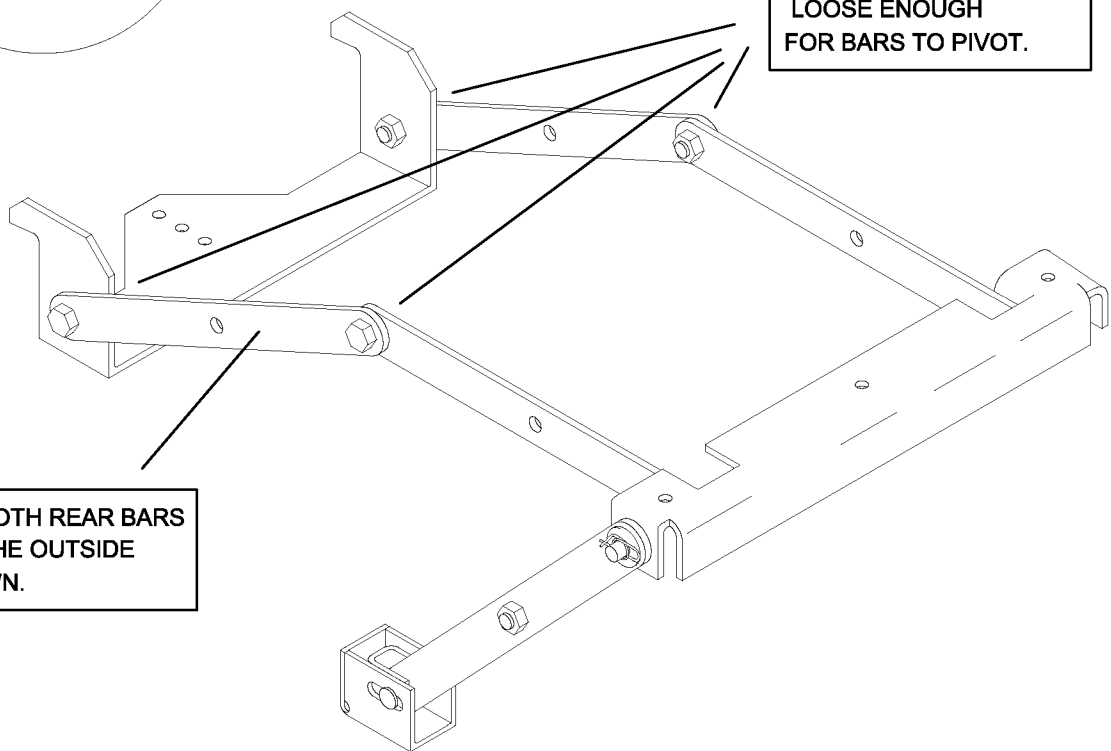
DECK MOUNTING ASSEMBLY



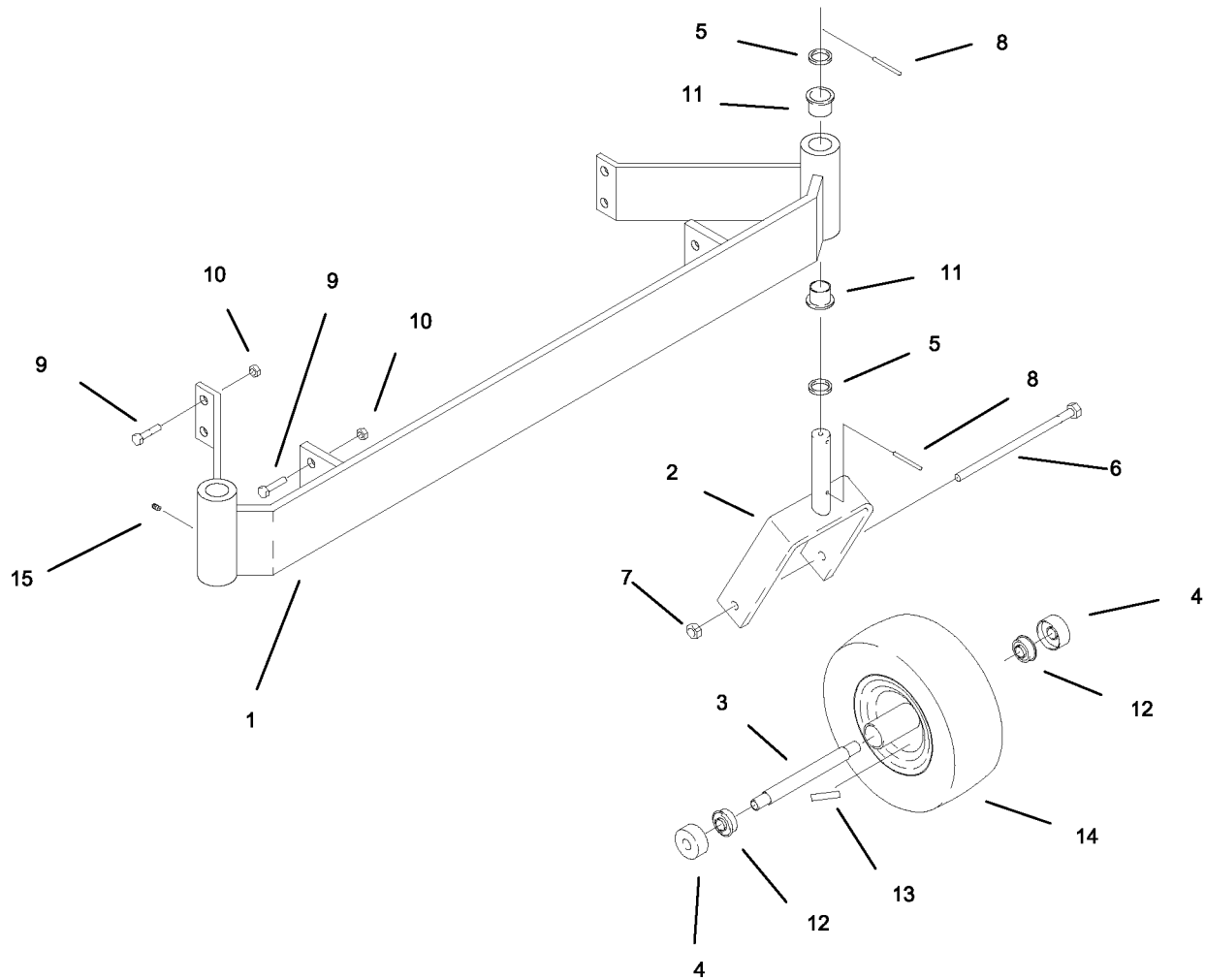
ALL PART NUMBERS SHOWN ON PAGES 1, 2, AND 14

NOTE: FOUR 1/2" NUTS LOOSE ENOUGH FOR BARS TO PIVOT.

NOTE: BOTH REAR BARS GO ON THE OUTSIDE AS SHOWN.

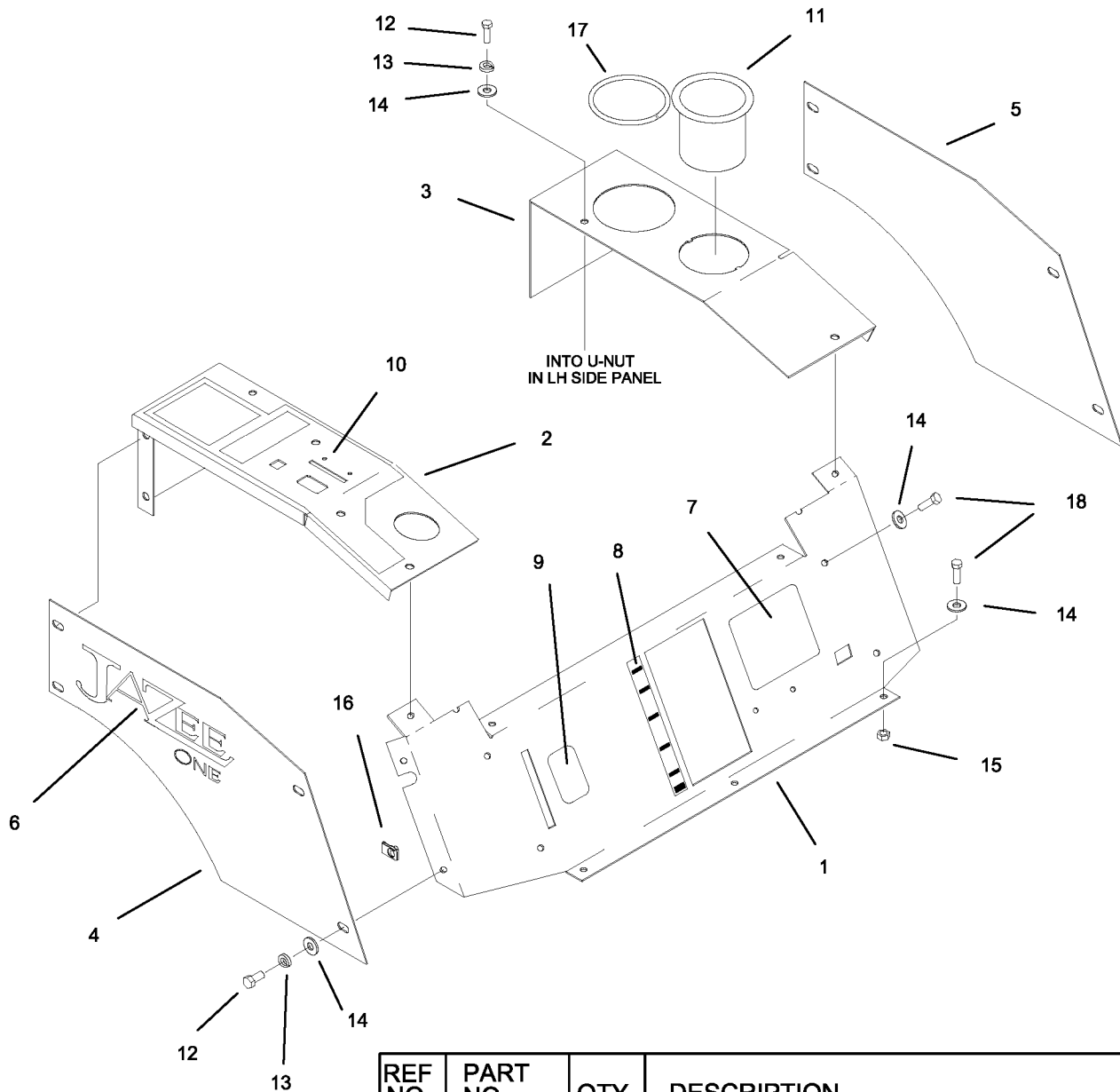


FRONT END



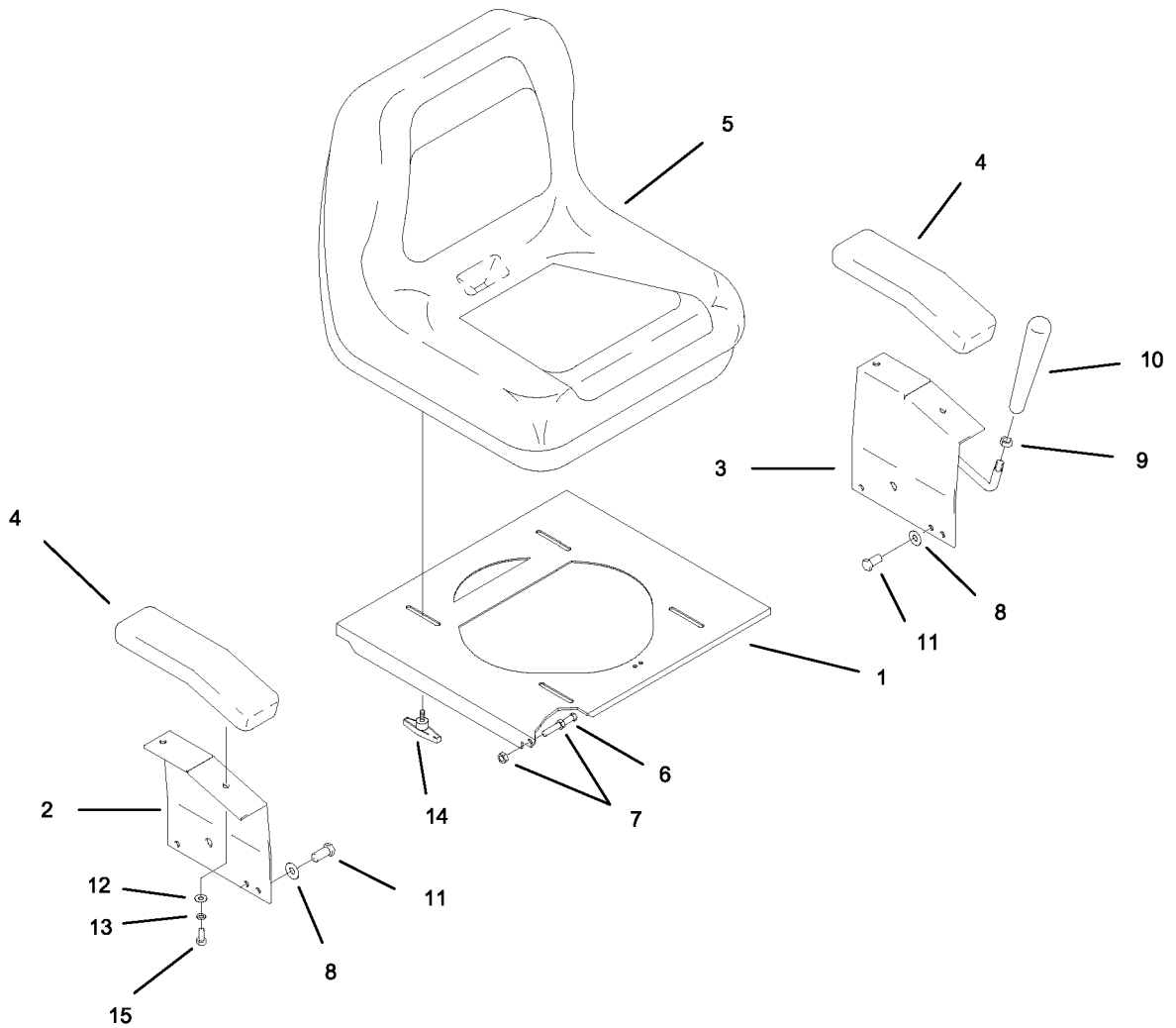
REF NO.	PART NO.	QTY.	DESCRIPTION
1	661-044W	1	FRONT END WELDMENT
2	649-018W	2	CASTER YOKE
3	622-121P	2	BEARING SPACER
4	611-135P	4	BEARING SHIELD
5	649-027P	4	THRUST WASHER
6	F-1659	2	1/2-13 X 5 1/2" BOLT
7	F-1005-05	2	1/2" LOCK NUT
8	F-1922	4	ROLL PIN
9	F-1394	8	3/8-16 X 1" BOLT
10	F-1005-03	8	3/8-16 LOCK NUT
11	H-2350	4	FLANGED BUSHING
12	D-3432	4	BEARING
13	P-11384	2	DECAL, TIRE PRESSURE (12 PSI)
14	D-3605	2	10" TIRE WITH RIM
15	H-1056	2	GREASE FITTING

FRONT PANEL & FENDERS



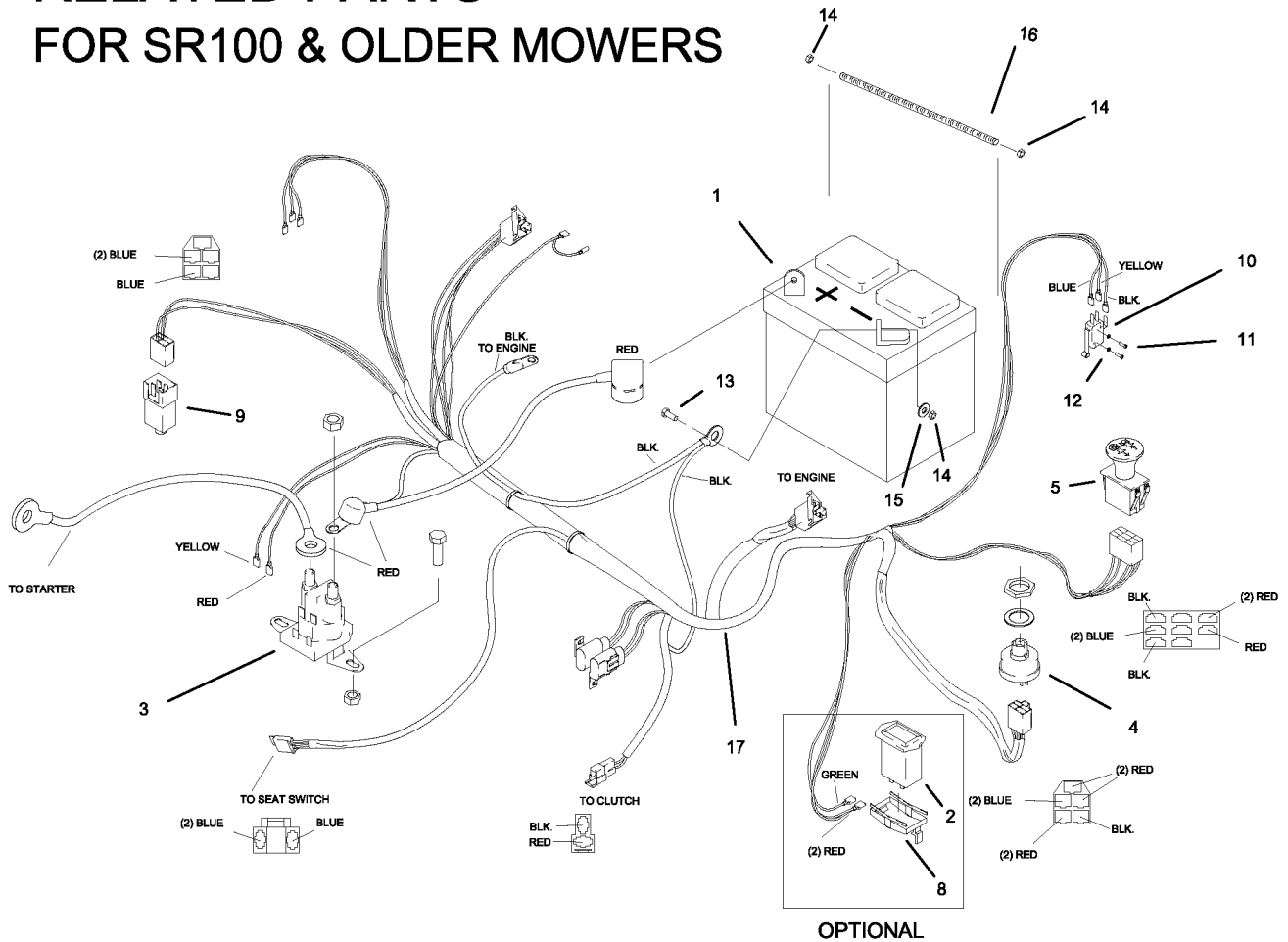
REF NO.	PART NO.	QTY.	DESCRIPTION
1	661-071A	1	FRONT PANEL W/DECALS (661-006P)
2	659-067A	1	FENDER CAP, RH W/DECALS (659-018P, W/O HR METER)
-	659-168A	1	FENDER CAP, RH W/DECALS (659-166P, W/ HR METER)
3	661-030P	1	FENDER CAP, LH
4	661-056A	1	FENDER SKIRT RH W/DECAL (659-023P)
5	661-055A	1	FENDER SKIRT, LH W/DECAL (659-023P)
6	P-11787	2	DECAL, "JAZEE ONE"
7	P-11782	1	DECAL, "SAFETY STOP"
8	P-11783	1	DECAL, CUT REFERENCE
9	P-11382	1	DECAL, "BRAKE OFF & ON"
10	P-11626	1	DECAL, "CONTROL PANEL"
11	644-028P	1	CUP HOLDER
12	F-1015-15	9	5/16-18 X 1" BOLT
13	F-1019-02	9	5/16 LOCK WASHER
14	F-1009-02	19	5/16 FLAT WASHER
15	F-1125	10	5/16-18 LOCK NUT
16	F-1860	9	U-NUT, 5/16"
17	644-029P	1	TRIM, FUEL TANK
18	F-1546	7	5/16-18 X 3/4" BOLT

SEAT AND RELATED PARTS



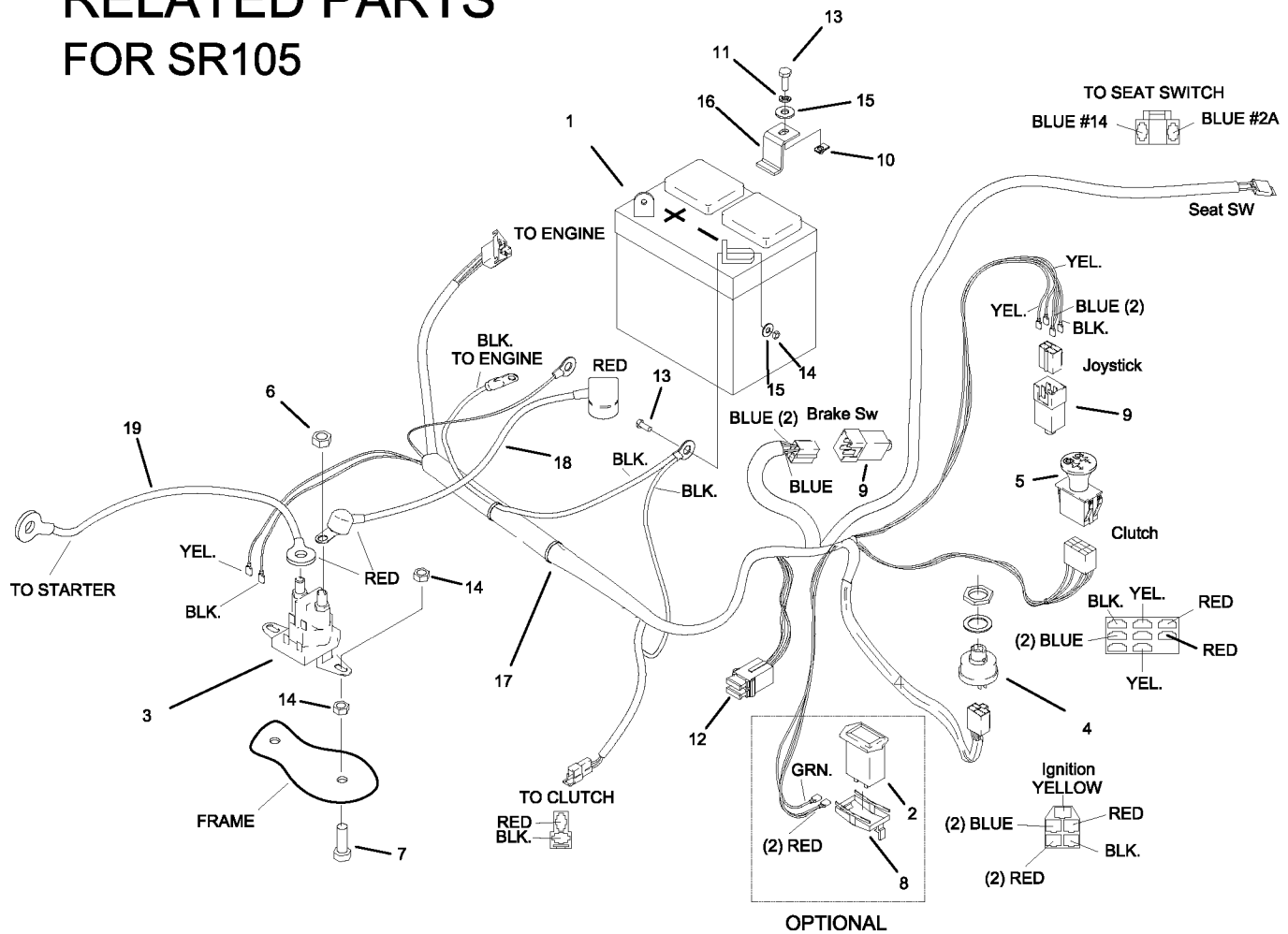
REF NO.	PART NO.	QTY.	DESCRIPTION
1	659-005P	1	SEAT MOUNTING BRACE
2	659-051P	1	ARM REST RH. (JOYSTICK)
3	659-055W	1	ARM REST LH. (JOYSTICK)
4	621-143A	2	ARM REST PAD
5	H-2393	1	SEAT
6	F-1015-27	2	3/8-16 X 1-1/2" GR. 5 BOLT
7	F-1005-03	4	3/8-16 LOCK NUT
8	F-1009-03	4	3/8" FLAT WASHER
9	F-1011-03	1	3/8-16 PLAIN NUT
10	H-2317	1	TAPERED HANDLE
11	F-1015-23	4	3/8-16 X 3/4" BOLT
12	F-1009-02	4	5/16" FLAT WASHER
13	F-1019-02	4	5/16" LOCK WASHER
14	659-073A	4	T-HANDLE ASSEMBLY
15	F-1015-15	4	5/16-18 X 1" BOLT

WIRE HARNESS & RELATED PARTS FOR SR100 & OLDER MOWERS



REF. NO.	PART NO.	QTY.	DESCRIPTION
1	E-5812	1	BATTERY
2	E-5878	1	HOUR METER
3	E-6054	1	SOLENOID
4	E-5873	1	START SWITCH
5	E-6403	1	CLUTCH SWITCH
6	F-1567	2	5/16-24 NUT
7	F-1015-02	2	1/4-20 X 5/8" GR. 5
8	E-6369	1	RETAINER CLIP
9	E-6297	1	BRAKE SWITCH
10	E-6074	1	SWITCH, SPDT MINI
11	F-1396	2	4-40 X 3/4 SCREW
12	F-1621	2	STAR WASHER
13	F-1538	2	1/4-20 X 3/4" GR. 5
14	F-1158	5	1/4-20 LOCK NUT
15	F-1009-01	4	1/4" FLAT WASHER
16	659-048P	1	BATTERY HOLD DOWN
17	E-6340	1	WIRE HARNESS
18	F-1535	2	6-32 LOCK NUT
	E-6281	1	COVER (KEY SWITCH)
	E-6307	1	-NOT SHOWN- OIL PRESSURE SWITCH (KAWASAKI) -NOT SHOWN-

WIRE HARNESS & RELATED PARTS FOR SR105



REF NO.	PART NO.	QTY.	DESCRIPTION
1	E-5812	1	BATTERY
2	E-5878	1	HOUR METER
3	E-6054	1	SOLENOID
4	E-5873	1	START SWITCH
5	E-6403	1	CLUTCH SWITCH
6	F-1011-01	2	1/4-20 NUT
7	F-1015-05	2	1/4-20 X 1" GR. 5
8	E-6369	1	RETAINER CLIP
9	E-6297	2	BRAKE SWITCH
10	F-1858	1	1/4-20 U-NUT
11	F-1019-01	1	1/4" LOCK WASHER
12	E-6207	2	FUSE, #ATC-30
13	F-1538	3	1/4-20 X 3/4" GR. 5
14	F-1158	6	1/4-20 LOCK NUT
15	F-1009-01	5	1/4" FLAT WASHER
16	661-092P	1	BATTERY HOLD DOWN
17	E-6405	1	WIRE HARNESS
18	E-6418	1	CABLE, BATTERY TO SOLENOID
19	E-6419	1	CABLE, SOLENOID TO ENGINE
	E-6281	1	COVER (KEY SWITCH) -NOT SHOWN-