

# Repair Parts Manual

# COUNTRY CLIPPER ZERO TURN MOWER

**AVENUE** A110

**BOULEVARD** B210

**SERIAL RANGE: 17255001 - 19243999**

# **COUNTRY CLIPPER**

## **AVENUE-A110 & BOULEVARD-B210**

**SERIAL RANGE: 17255001 - 19243999**

**ZERO TURN RADIUS MOWER**

### **TABLE OF CONTENTS**

#### **SECTION 1 – MOWER DECKS AND RELATED PARTS**

1. 42" DECK ASSEMBLY
2. 48" DECK ASSEMBLY
3. 54" DECK ASSEMBLY
4. 60" DECK ASSEMBLY
5. DISCHARGE CHUTE ASSEMBLY
6. DECK SPINDLE ASSEMBLY
7. DOUBLE IDLER & RELATED PARTS (42" DECK)
8. DOUBLE IDLER & RELATED PARTS (48", 54" & 60" DECK)
9. BELT TENSION LEVER
10. FIXED IDLERS & RELATED PARTS
11. LIFT HANDLE ASSEMBLY & RELATED PARTS
12. DECK SCISSOR & RELATED PARTS

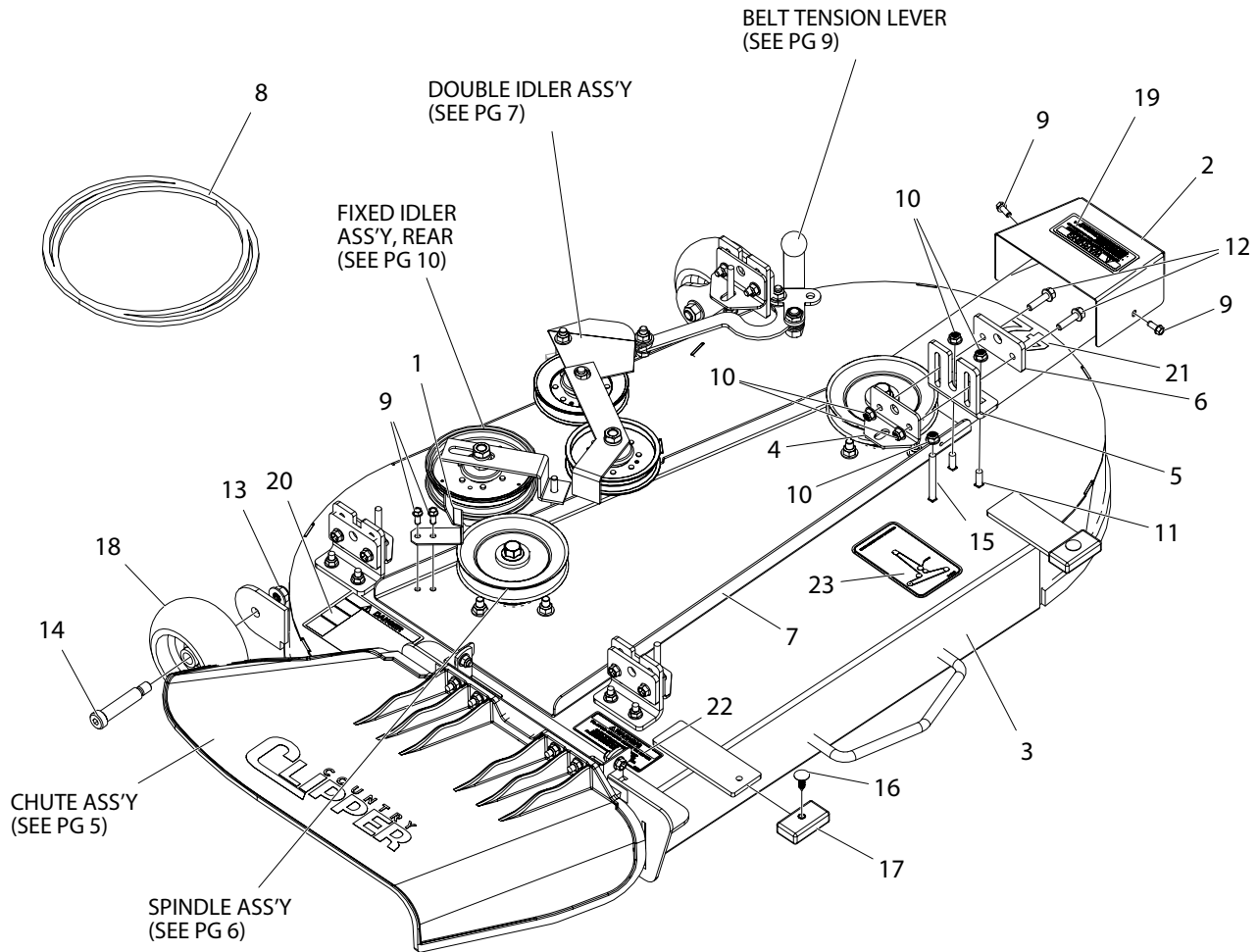
#### **SECTION 2 – TRACTOR FRAME AND RELATED PARTS**

13. FOOT DECK & TIRES (AVENUE)
14. FOOT DECK & TIRES (BOULEVARD)
15. FRONT PANEL ASSEMBLY & RELATED PARTS
16. FRONT PANEL ASSEMBLY & RELATED PARTS (CONT)
17. BATTERY BOX
18. BRAKE ASSEMBLY

#### **SECTION 3 – TRACTOR DRIVE AND RELATED PARTS**

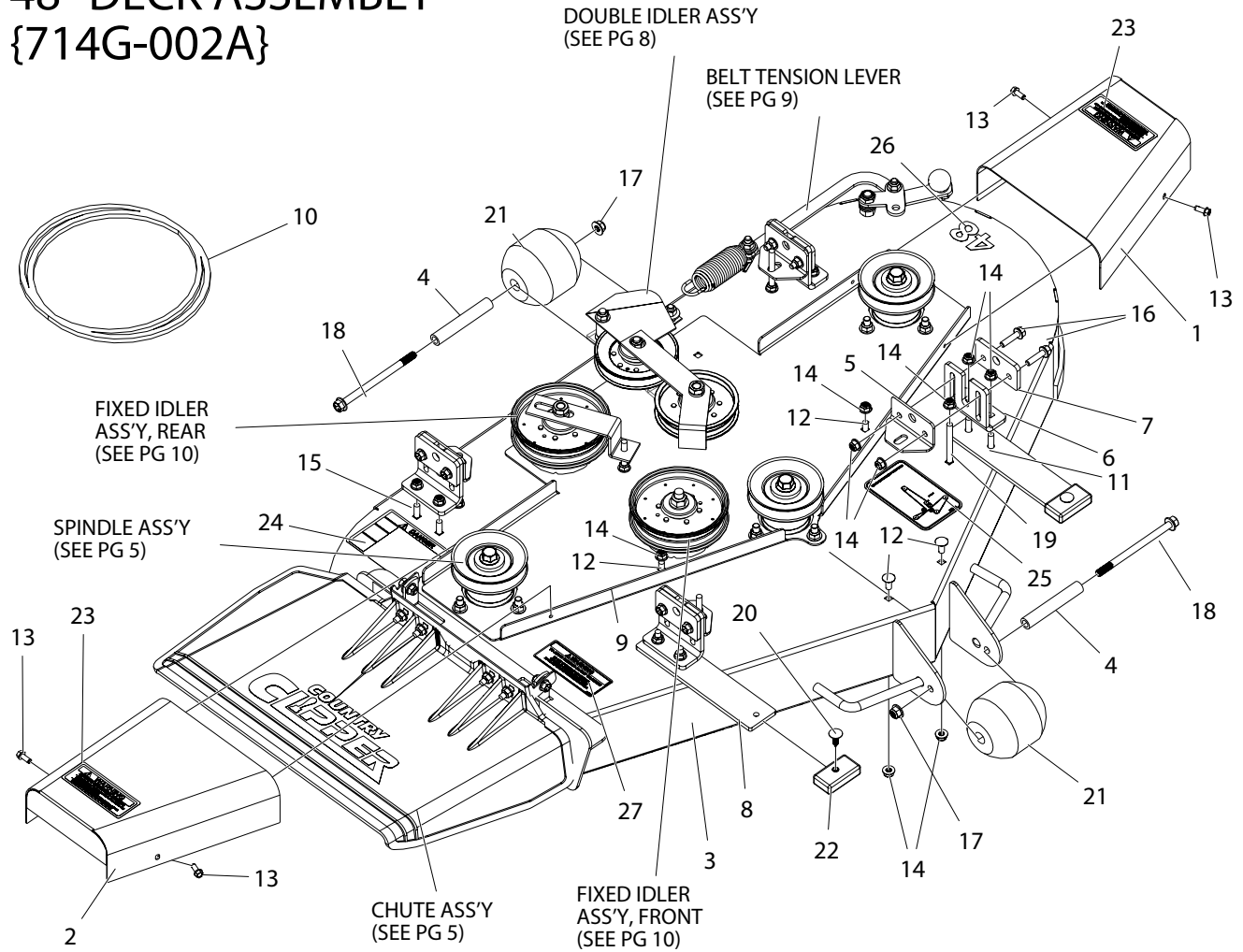
19. FUEL TANK ASSEMBLY
20. JOYSTICK CONTROL & RELATED PARTS
21. JOYSTICK ASSEMBLY
22. JOYSTICK ASSEMBLY MOUNTING & RELATED PARTS
23. TWIN LEVER CONTROL & RELATED PARTS
24. TWIN LEVER ASSEMBLY
25. CONTROL PANEL
26. FENDER ASSEMBLY & RELATED PARTS
27. TRANSMISSION ASSEMBLY & RELATED PARTS (AVENUE & BOULEVARD)
28. TRANSMISSION ASSEMBLY & RELATED PARTS (BOULEVARD)
29. SEAT BASE & RELATED PARTS
30. ENGINE
31. ENGINE & CLUTCH MOUNTING & RELATED PARTS
32. WIRE HARNESS & RELATED PARTS – JOYSTICK
33. WIRE HARNESS & RELATED PARTS – TWIN LEVER
34. WIRE HARNESS SCHEMATIC – JOYSTICK
35. WIRE HARNESS SCHEMATIC – TWIN LEVER

# 42" DECK ASSEMBLY {714F-002A}



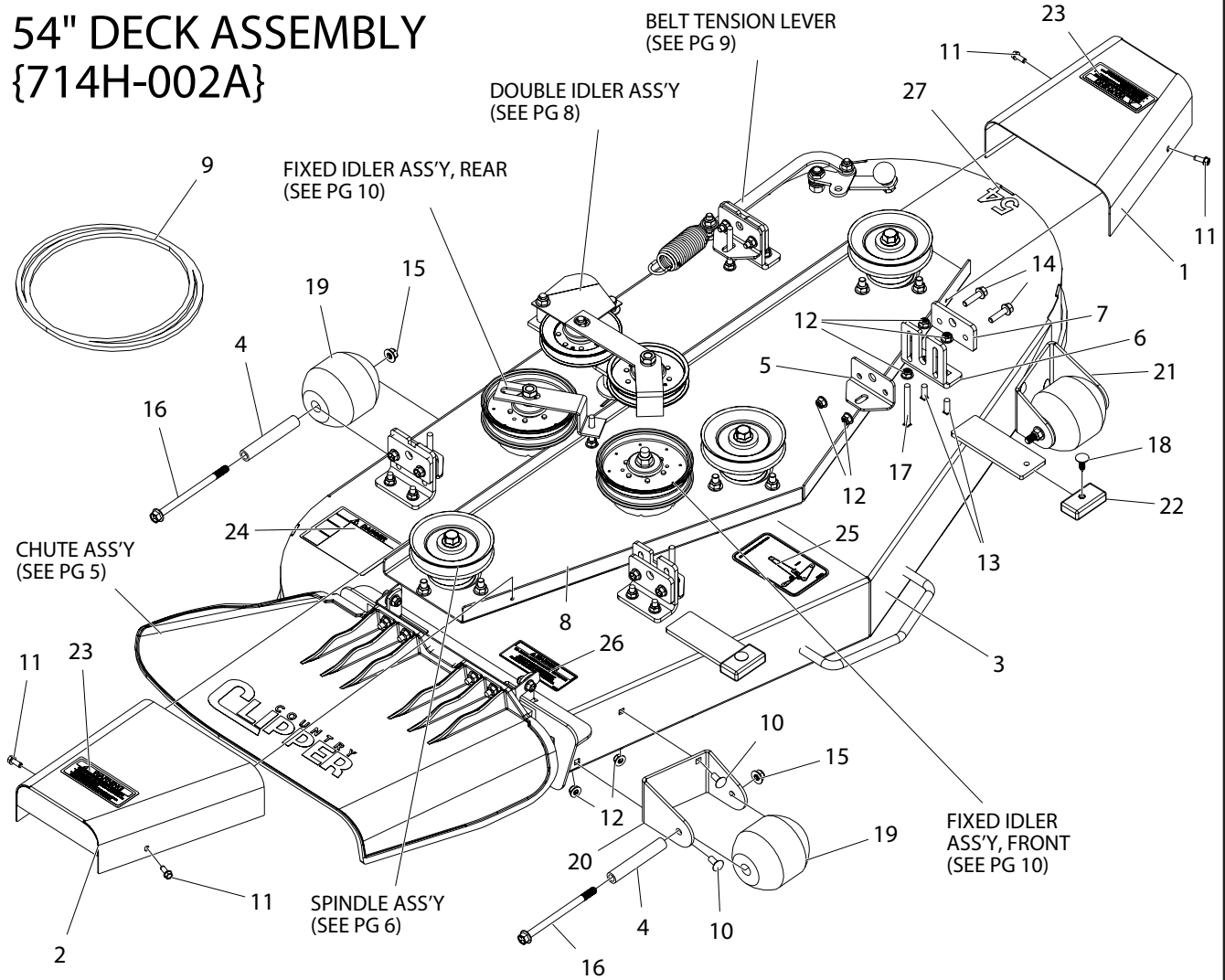
ITEM #	QTY	PART #	DESCRIPTION
1	1	700-058P	GUIDE, BELT
2	1	714-009A	42" PULLEY COVER W/ DECALS
3	1	714-052A	42" DECK W/ DECALS
4	4	714-179P	PLATE, ADJUSTMENT W/FLANGE
5	3	714-383P	DECK HANGER TAB
6	4	714-424P	PLT, CLAMP
7	1	714A-005P	DECK STIFFENER, 42"
8	1	D-3948	BELT, BANDO, B-122
9	4	F-2030	HEX, WASHER HEAD SCREW, 1/4 X 5/8", SELF-TAPPING, YZ
10	18	F-2063	NUT, 5/16-18, NYLOC, FLANGED, YZ
11	6	F-2066	BOLT, CARRIAGE, 5/16-18 X 1", YZ, GR5
12	8	F-2122	FHCS, 5/16-18 X 1-1/4", YZ, GR5, FULL THD
13	2	F-2152	NUT, 1/2-13 NYLOC, FLANGED, YZ
14	2	F-2232	SHCS, 5/8" X 2-1/2", CZ
15	4	F-2234	CARRIAGE BOLT, 5/16-18 X 3" FULL THREAD
16	2	F-2250	CLIP, FIR TREE, 1/4" X 1", BLACK NYLON
17	2	H-2959	WEAR PAD
18	2	H-2968	ANTI-SCALP WHEEL, 5" X 2-1/2"
19	1	P-10935	DECAL, "WARNING ROTATING DRIVE"
20	1	P-10941	DECAL "DANGER ROTATING BLADES"
21	1	P-11949	DECAL, DECK SIZE, 42
22	1	P-12706	WARNING DECAL, DISCHARGE CHUTE
23	1	P-12712	DECAL WRANGLER BELT ROUTING

# 48" DECK ASSEMBLY {714G-002A}



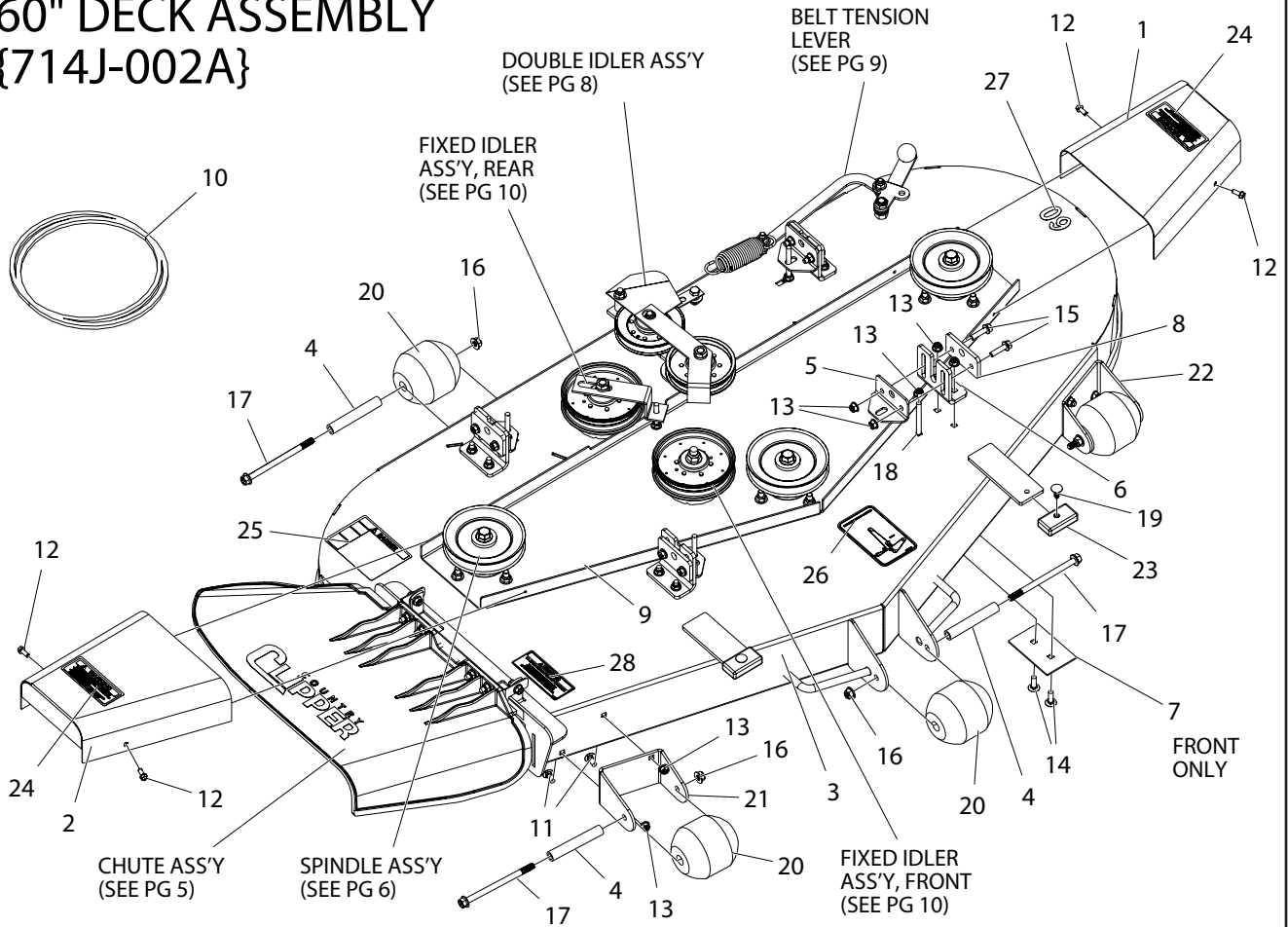
ITEM #	QTY	PART #	DESCRIPTION
1	1	714-124A	PULLEY COVER W/ DECALS, TRIM
2	1	714-123A	PULLEY COVER W/ DECALS, DISCHARGE
3	1	714-053A	48" DECK W/ DECALS
4	3	714-133P	BUSHING, ROLLER BRACKET
5	4	714-179P	PLATE, ADJUSTMENT W/FLANGE
6	4	714-383P	DECK HANGER TAB
7	4	714-424P	PLT, CLAMP
8	2	714-426P	PLT, DECK STOP
9	1	714B-005P	DECK STIFFENER, 48"
10	1	D-3949	BANDL BELT B-144
11	4	F-1106	BOLT, CARRIAGE, 5/16-18 X 1-1/4, YZ, GR5
12	4	F-1671	CARRIAGE BOLT, 5/16-18 X 3/4", YZ, GR5
13	4	F-2030	HEX, WASHER HEAD SCREW, 1/4 X 5/8", SELF-TAPPING, YZ
14	24	F-2063	NUT, 5/16-18, NYLOC, FLANGED, YZ
15	4	F-2066	BOLT, CARRIAGE, 5/16-18 X 1", YZ, GR5
16	8	F-2122	FHCS, 5/16-18 X 1-1/4", YZ, GR5, FULL THD
17	3	F-2151	NUT, 3/8-16 NYLOC, FLANGED, YZ
18	3	F-2222	FHCS, 3/8-16 X 5-1/2", YZ, GR5
19	4	F-2234	CARRIAGE BOLT, 5/16-18 X 3" FULL THREAD
20	2	F-2250	CLIP, FIR TREE, 1/4" X 1", BLACK NYLON
21	3	H-2768	ROLLER, 3-3/4 DIA. X 4"
22	2	H-2959	WEAR PAD
23	2	P-10935	DECAL, "WARNING ROTATING DRIVE"
24	1	P-10941	DECAL, "DANGER ROTATING BLADES"
25	1	P-11932	DECK BELT ROUTING
26	1	P-11950	DECAL, DECK SIZE, 48
27	1	P-12706	WARNING DECAL, DISCHARGE CHUTE

# 54" DECK ASSEMBLY {714H-002A}



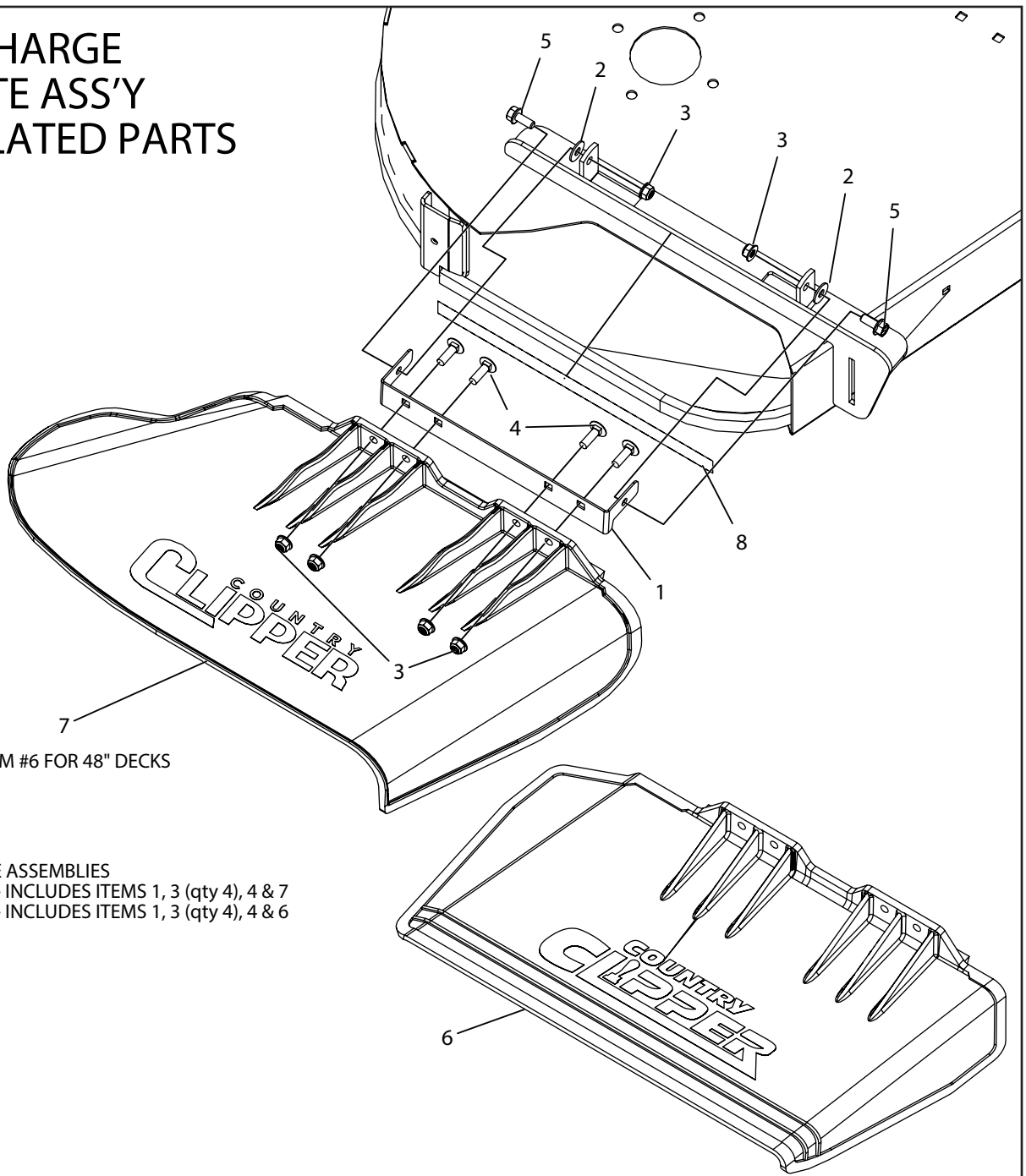
ITEM #	QTY	PART #	DESCRIPTION
1	1	714-124A	PULLEY COVER W/ DECALS, TRIM
2	1	714-123A	PULLEY COVER W/ DECALS, DISCHARGE
3	1	714-094A	54" DECK W/ DECALS
4	4	714-133P	BUSHING, ROLLER BRACKET
5	4	714-179P	PLATE, ADJUSTMENT W/FLANGE
6	4	714-383P	DECK HANGER TAB
7	4	714-424P	PLT, CLAMP
8	1	714C-005P	DECK STIFFENER, 54"
9	1	D-3950	BANDL BELT B-154
10	4	F-1671	CARRIAGE BOLT, 5/16-18 X 3/4", YZ, GR5
11	4	F-2030	HEX, WASHER HEAD SCREW, 1/4 X 5/8", SELF-TAPPING, YZ
12	24	F-2063	NUT, 5/16-18, NYLOC, FLANGED, YZ
13	8	F-2066	BOLT, CARRIAGE, 5/16-18 X 1", YZ, GR5
14	8	F-2122	FHCS, 5/16-18 X 1-1/4", YZ, GR5, FULL THD
15	4	F-2151	NUT, 3/8-16 NYLOC, FLANGED, YZ
16	4	F-2222	FHCS, 3/8-16 X 5-1/2", YZ, GR5
17	4	F-2234	CARRIAGE BOLT, 5/16-18 X 3" FULL THREAD
18	2	F-2250	CLIP, FIR TREE, 1/4" X 1", BLACK NYLON
19	4	H-2768	ROLLER, 3-3/4 DIA. X 4"
20	1	H-2938	PLATE, ROLLER BRACKET
21	1	H-2939	PLATE, ROLLER BRACKET
22	2	H-2959	WEAR PAD
23	2	P-10935	DECAL, "WARNING ROTATING DRIVE"
24	1	P-10941	DECAL, DANGER
25	1	P-11932	DECK BELT ROUTING
26	1	P-12706	WARNING DECAL, DISCHARGE CHUTE
27	1	P-13131	DECAL, DECK SIZE, 54

# 60" DECK ASSEMBLY {714J-002A}



ITEM #	QTY	PART #	DESCRIPTION
1	1	714-124A	PULLEY COVER W/ DECALS, TRIM
2	1	714-123A	PULLEY COVER W/ DECALS, DISCHARGE
3	1	714-095A	60" DECK W/ DECALS
4	5	714-133P	BUSHING, ROLLER BRACKET
5	4	714-179P	PLATE, ADJUSTMENT W/FLANGE
6	4	714-383P	DECK HANGER TAB
7	2	714-404P	REINFORCEMENT PLATE, 60"
8	4	714-424P	PLT, CLAMP
9	1	714D-005P	DECK STIFFENER, 60"
10	1	D-3951	BANDL BELT B-166
11	4	F-1671	CARRIAGE BOLT, 5/16-18 X 3/4", YZ, GR5
12	4	F-2030	HEX, WASHER HEAD SCREW, 1/4 X 5/8", SELF-TAPPING, YZ
13	24	F-2063	NUT, 5/16-18, NYLOC, FLANGED, YZ
14	8	F-2066	BOLT, CARRIAGE, 5/16-18 X 1", YZ, GR5
15	8	F-2122	FHCS, 5/16-18 X 1-1/4", YZ, GR5, FULL THD
16	5	F-2151	NUT, 3/8-16 NYLOC, FLANGED, YZ
17	5	F-2222	FHCS, 3/8-16 X 5-1/2", YZ, GR5
18	4	F-2234	CARRIAGE BOLT, 5/16-18 X 3" FULL THREAD
19	2	F-2250	CLIP, FIR TREE, 1/4" X 1", BLACK NYLON
20	5	H-2768	ROLLER, 3-3/4 DIA. X 4"
21	1	H-2938	PLATE, ROLLER BRACKET
22	1	H-2939	PLATE, ROLLER BRACKET
23	2	H-2959	WEAR PAD
24	2	P-10935	DECAL, "WARNING ROTATING DRIVE"
25	1	P-10941	DECAL, "DANGER ROTATING BLADES"
26	1	P-11932	DECK BELT ROUTING
27	1	P-11952	DECAL, DECK SIZE, 60
28	1	P-12706	WARNING DECAL, DISCHARGE CHUTE

# DISCHARGE CHUTE ASS'Y & RELATED PARTS



7

USE ITEM #6 FOR 48" DECKS

### COMPLETE ASSEMBLIES

714-010A - INCLUDES ITEMS 1, 3 (qty 4), 4 & 7

643-111A - INCLUDES ITEMS 1, 3 (qty 4), 4 & 6

6

ITEM #	QTY	PART #	DESCRIPTION
1	1	714-112P	HINGE, DECK CHUTE
2	2	F-1009-02	WASHER, FLAT
3	6	F-2063	NUT, 5/16-18, NYLOC, FLANGED, YZ
4	4	F-2066	BOLT, CARRIAGE, 5/16-18 X 1", YZ, GR5
5	2	F-2120	FHCS, 5/16-18 X 3/4", YZ, GR5
6	1	H-2723	CHUTE, DISCHARGE, SMALL
7	1	H-2946	DECK CHUTE
8	1	P-13266	DECAL, MISSING CHUTE

# DECK SPINDLE ASSEMBLY {D-3917}

## BLADE PART NUMBERS

### 42" & 60" DECK

- H-2885 HIGH LIFT W/O FUSION (STANDARD)
- H-2886 HIGH LIFT W/ FUSION
- H-2661 LOW LIFT
- H-2667 GATOR

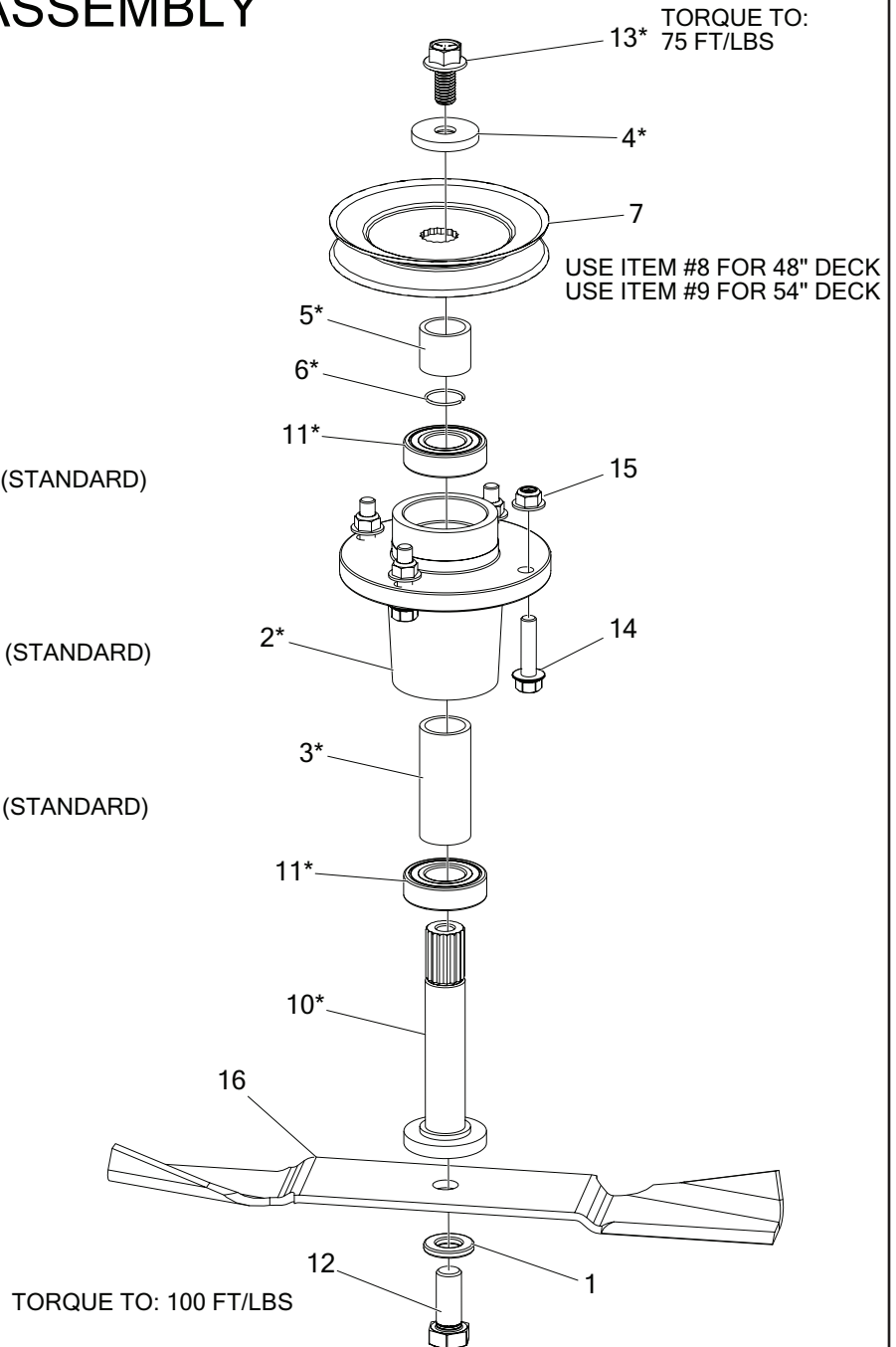
### 48" DECK

- H-2882 HIGH LIFT W/O FUSION (STANDARD)
- H-2659 LOW LIFT
- H-2665 GATOR

### 54" DECK

- H-2883 HIGH LIFT W/O FUSION (STANDARD)
- H-2884 HIGH LIFT W/ FUSION
- H-2660 LOW LIFT
- H-2666 GATOR

PARTS MARKED "\*" ARE PART OF COMPLETE ASS'Y D-3917

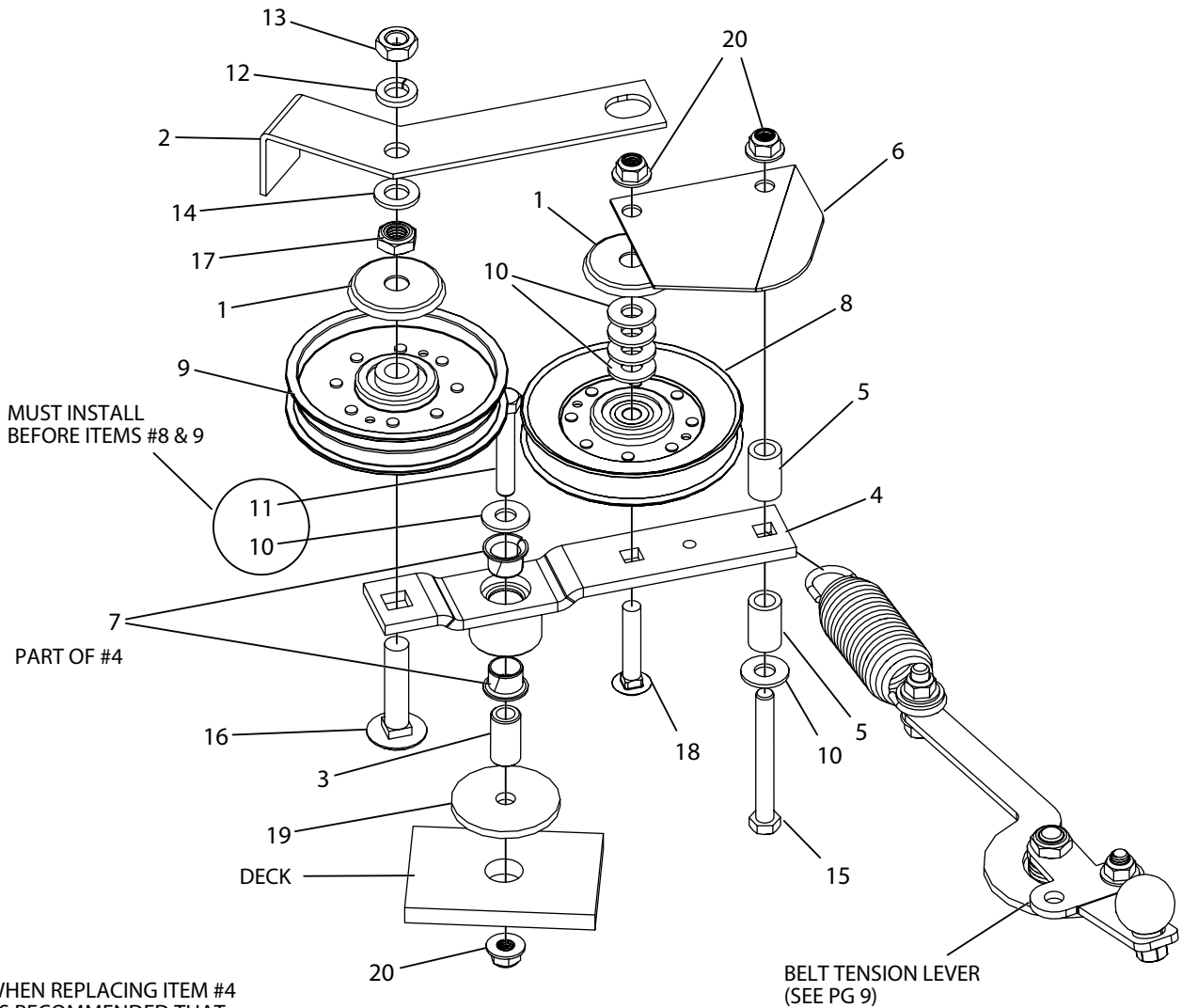


ITEM #	QTY	PART #	DESCRIPTION
1	1	660-099P	WASHER, BLADE, 5/8
2	1	--	SPINDLE HOUSING
3	1	--	SPINDLE SPACER
4	1	D-3990	SPINDLE HARD WASHER
5	1	D-3989	SPINDLE OUTER SPACER
6	1	D-3991	SPINDLE RETAINING RING
7	1	D-3918	PULLEY, 5.195, A-B, DECK
8	1	D-3919	PULLEY, 4.039, A-B, DECK
9	1	D-3920	PULLEY, 4.513, A-B, DECK

ITEM #	QTY	PART #	DESCRIPTION
10	1	D-3961	SPINDLE SHAFT
11	2	D-3058	SPINDLE BRG
12	1	F-2073	HHCS, 5/8-11 X 1-1/2", GR8, YZ
13	1	F-2143	FHCS, 1/2-13 X 1", YZ, GR5
14	4	F-2147	FHCS, 3/8-16 X 1-1/2", YZ, GR5
15	4	F-2151	NUT, 3/8-16 NYLOC, FLANGED, YZ
16	1	(SEE LIST)	BLADE



# DOUBLE IDLER DRIVE BELT IDLER 42" DECK

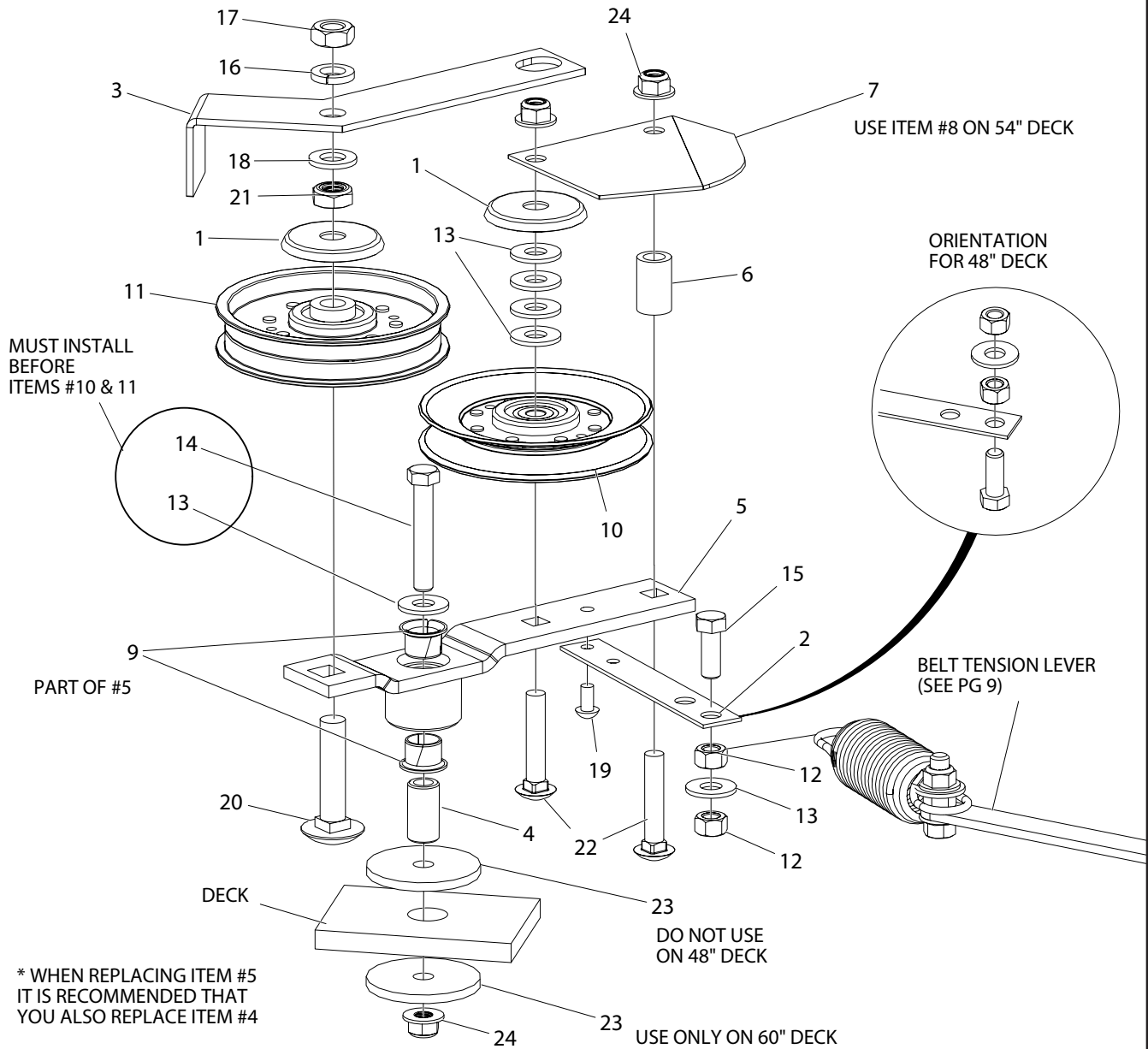


\* WHEN REPLACING ITEM #4  
IT IS RECOMMENDED THAT  
YOU ALSO REPLACE ITEM #3

ITEM #	QTY	PART #	DESCRIPTION
1	2	620-201P	WASHER, BEARING CAP
2	1	660-110P	BELT KEEPER, B BELT
3	1	660-135P	MOUNTING PIN
4	1	660-147A	IDLER ARM ASSEMBLY
5	2	668-021P	SPACER, BELT GUARD
6	1	668-029P	BELT GUARD
7	2	D-3730	BUSHING, DU 5/8 DIA X 1/2 LG
8	1	D-3923	PULLEY, V-IDLER, 4.59OD, AB, NTN
9	1	D-3924	PULLEY, FLAT IDLER, 4.25 OD, NTN, DBL INSERT
10	6	F-1009-03	WASHER, FLAT, STD, STEEL 3/8" W SERIES
11	1	F-1268	HHCS, 3/8-16 X 2-1/4", YZ, GR5

ITEM #	QTY	PART #	DESCRIPTION
12	1	F-1464	LOCKWASHER, 1/2"
13	1	F-1489	NUT, HEX, JAM, 1/2-13, YZ
14	1	F-1521	WASHER, 1/2" CUSTOM, YZ
15	1	F-1616	CAPSCREW, 3/8-16 X 3-1/4 GR. 5
16	1	F-1822	BOLT, CARRIAGE, 1/2-13 X 2-1/4", YZ, GR5
17	1	F-1966	NUT, THIN, 1/2-13, NYLOC, YZ
18	1	F-1976	BOLT, CARRIAGE, 3/8-16 X 2", YZ, GR5
19	1	F-2102	WASHER, 2.25 OD X .406 ID X 7GA, YZ
20	3	F-2151	NUT, 3/8-16 NYLOC, FLANGED, YZ

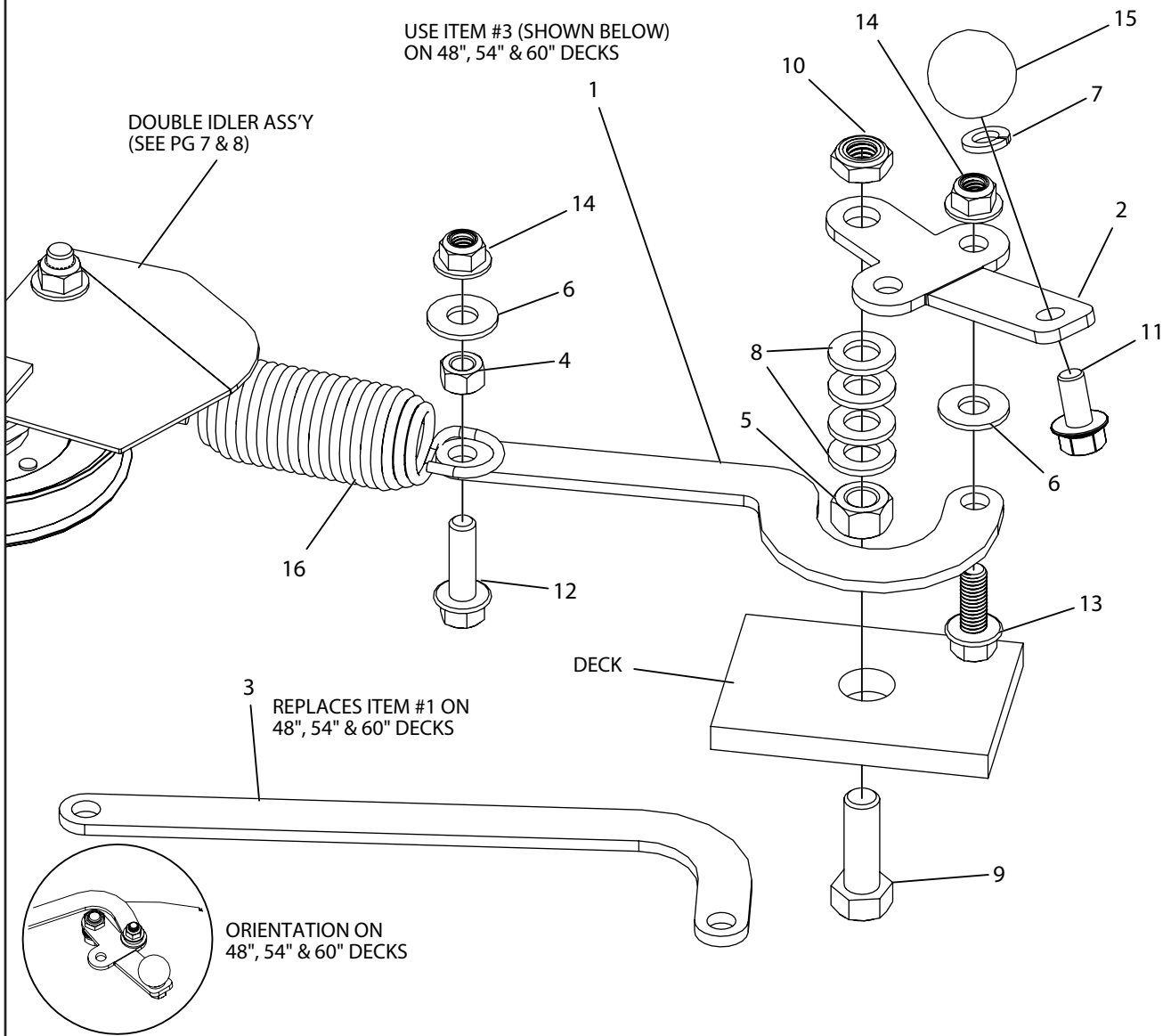
# DOUBLE IDLER DRIVE BELT IDLER 48", 54" & 60" DECK



ITEM #	QTY	PART #	DESCRIPTION
1	2	620-201P	WASHER, BEARING CAP
2	1	660-081P	EXTENSION, SPRING
3	1	660-110P	BELT KEEPER, B BELT
4	1	660-135P	MOUNTING PIN
5	1	660-147A	IDLER ARM ASSEMBLY
6	1	668-021P	SPACER, BELT GUARD
7	1	668-029P	BELT GUARD
8	1	714-183P	BELT GUARD, 54"
9	2	D-3730	BUSHING, DU 5/8 DIA X 1/2 LG
10	1	D-3923	PULLEY, V-IDLER, 4.59OD, AB, NTN
11	1	D-3924	PULLEY, FLAT IDLER, 4.25 OD, NTN, DBL INSERT
12	2	F-1005-03	NUT, 3/8-16, CENTERLOCK, YZ, GR5
13	6	F-1009-03	WASHER, FLAT, 3/8, YZ

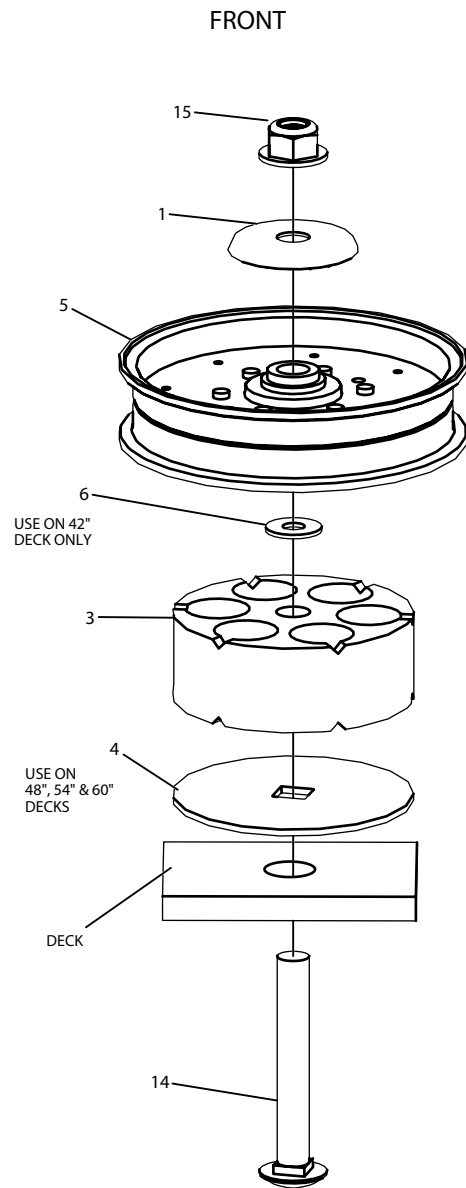
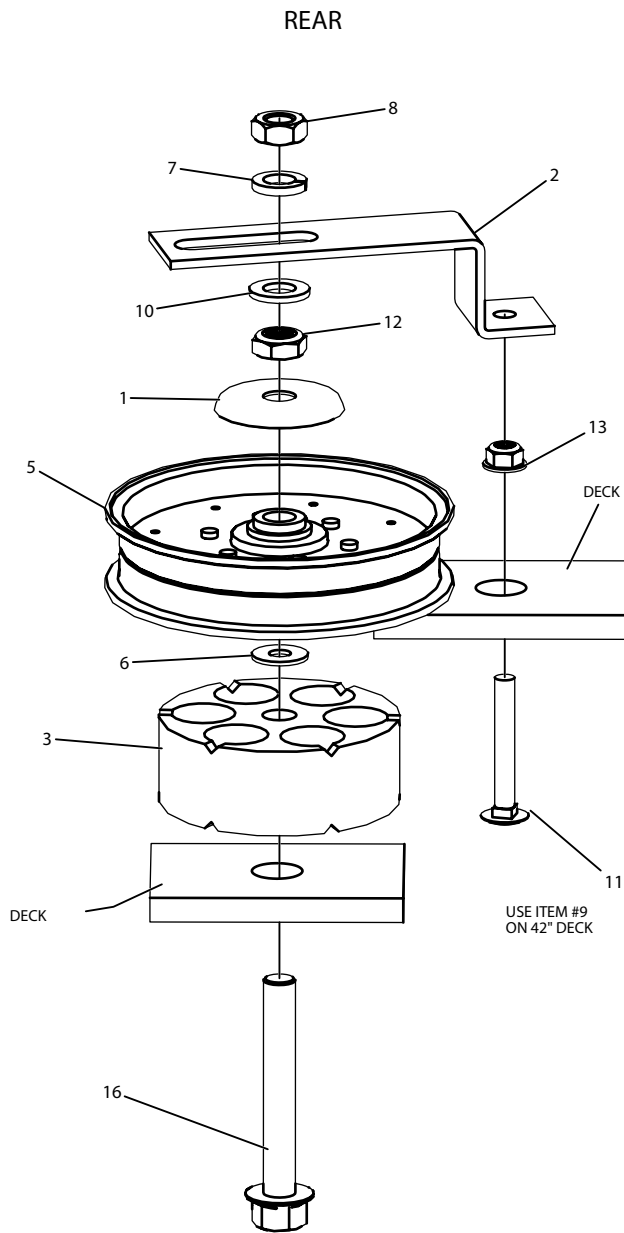
ITEM #	QTY	PART #	DESCRIPTION
14	1	F-1268	HHCS, 3/8-16 X 2-1/4", YZ, GR5
15	1	F-1394	HHCS, 3/8-16NC X 1", GR.5, YELLOW PLATED
16	1	F-1464	LOCKWASHER, 1/2"
17	1	F-1489	NUT, HEX, JAM, 1/2-13, YZ
18	1	F-1521	WASHER, 1/2" CUSTOM, YZ
19	1	F-1733	DRIVE SCREW, 1/4" X 1/2", RND HD
20	1	F-1822	BOLT, CARRIAGE, 1/2-13 X 2-1/4", YZ, GR5
21	1	F-1966	NUT, THIN, 1/2-13, NYLOC, YZ
22	2	F-1976	BOLT, CARRIAGE, 3/8-16 X 2", YZ, GR5
23	2	F-2102	WASHER, 2.25 OD X .406 ID X 7GA, YZ
24	3	F-2151	NUT, 3/8-16 NYLOC, FLANGED, YZ

# BELT TENSION LEVER



ITEM #	QTY	PART #	DESCRIPTION
1	1	660-031P	BELT TIGHTENER ARM
2	1	660-184P	HANDLE, BELT TENSIONER
3	1	714-180P	BELT TENSION ARM
4	1	F-1005-03	NUT, 3/8-16, CENTERLOCK, YZ, GR5
5	1	F-1005-05	NUT, 1/2-13, CENTERLOCK, YZ, GR5
6	2	F-1009-03	WASHER, FLAT, STD, STEEL 3/8" W SERIES
7	1	F-1019-03	LOCKWASHER, HVY, 3/8, YZ
8	4	F-1521	WASHER, 1/2" CUSTOM, YZ
9	1	F-1526	HHSCREW, 1/2-13 UNC X 1-1/2 GR. 5 YELLOW PLATED
10	1	F-1966	NUT, THIN, 1/2-13, NYLOC, YZ
11	1	F-2124	FHCS, 3/8-16 X 3/4", YZ, GR5
12	1	F-2125	FHCS, 3/8-16 X 1-1/4", YZ, GR5
13	1	F-2141	FHCS, 3/8-16 X 1", YZ, GR5
14	2	F-2151	NUT, 3/8-16 NYLOC, FLANGED, YZ
15	1	H-2405	BALL, 1-1/4", 3/8-16THRD, BLK THERMOPLASTIC STEEL INSERT
16	1	H-2619	SPRING, 5 X 1-1/2, TAPERED ENDS

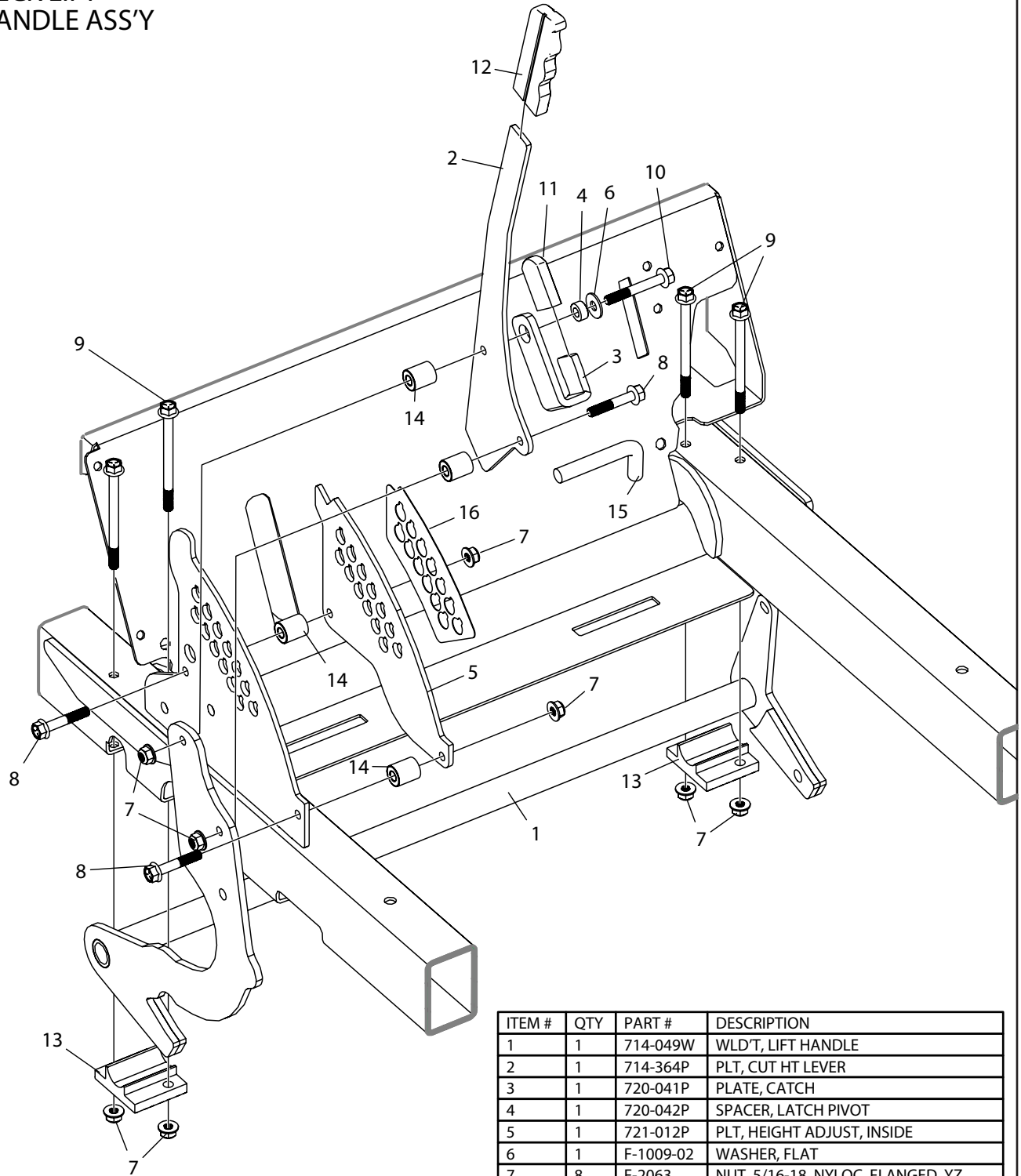
# FIXED IDLER ASSEMBLIES



ITEM #	QTY	PART #	DESCRIPTION
1	2	620-201P	WASHER, BEARING CAP
2	1	660-114P	BELT KEEPER, SINGLE END
3	2	660-148P	SPACER, IDLER MOUNT
4	1	660-207P	WASHER, 1/2" CARRIAGE BOLT
5	2	D-3904	PULLEY, FLAT IDLER, 5"
6	2	F-1009-05	WASHER, FLAT, 1/2, YZ
7	1	F-1464	LOCKWASHER, 1/2"
8	1	F-1489	NUT, HEX, JAM, 1/2-13, YZ
9	1	F-1518	CAPSCREW, 5/16-18 X 2-1/2 F.T. ZINC PLATED GR2

ITEM #	QTY	PART #	DESCRIPTION
10	1	F-1521	WASHER, 1/2" CUSTOM, YZ
11	1	F-1707	CARRIAGE BOLT, 5/16-18 X 2-1/4 ZINC PLATED
12	1	F-1966	NUT, THIN, 1/2-13, NYLOC, YZ
13	1	F-2063	NUT, 5/16-18, NYLOC, FLANGED, YZ
14	1	F-2106	BOLT, CARRIAGE, 1/2-13 X 3-1/2", YZ, GR5
15	1	F-2152	NUT, 1/2-13 NYLOC, FLANGED, YZ
16	1	F-2269	FHCS, 1/2-13 X 3-3/4", YZ GR8

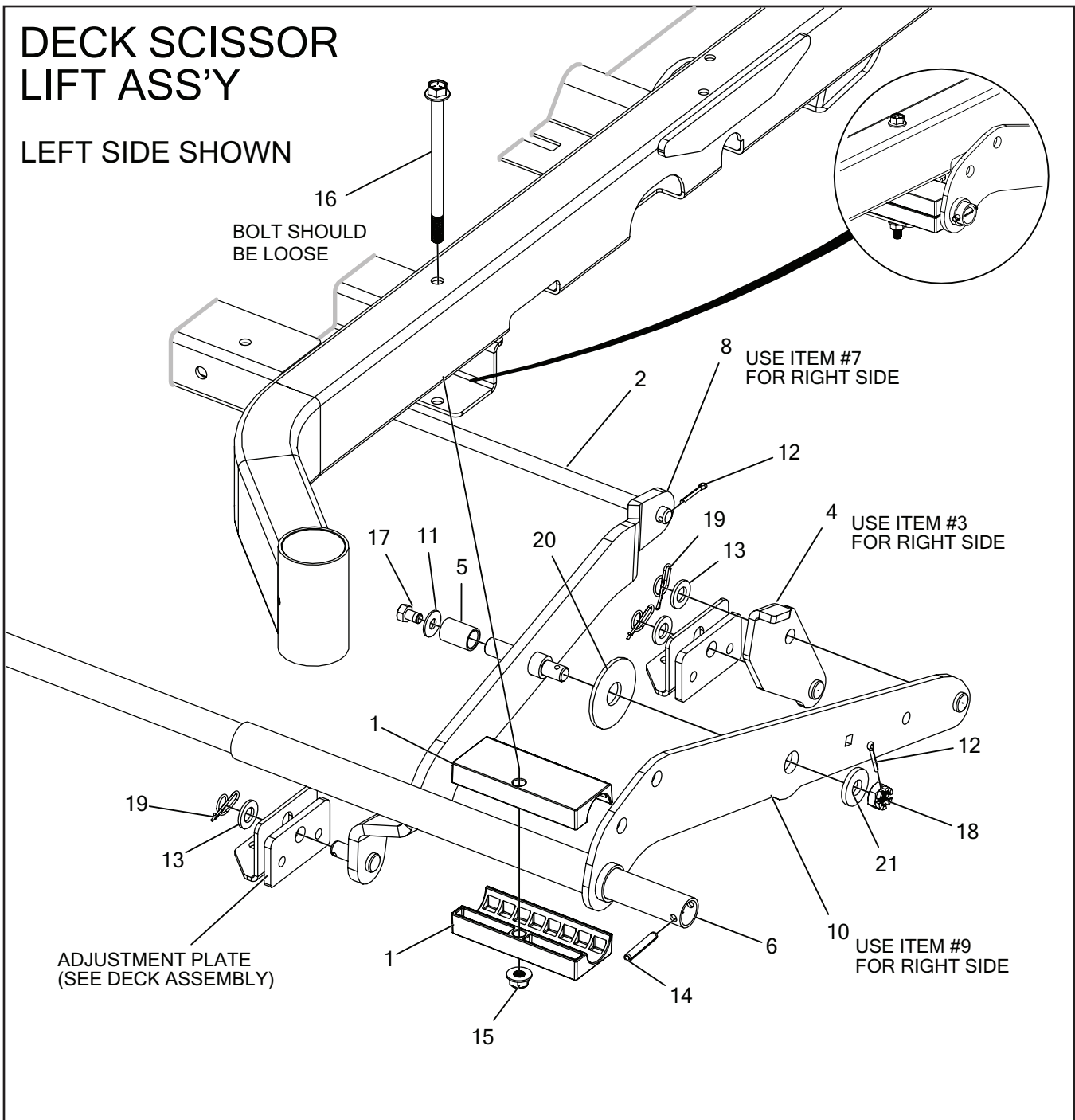
# DECK LIFT HANDLE ASS'Y



ITEM #	QTY	PART #	DESCRIPTION
1	1	714-049W	WLD'T, LIFT HANDLE
2	1	714-364P	PLT, CUT HT LEVER
3	1	720-041P	PLATE, CATCH
4	1	720-042P	SPACER, LATCH PIVOT
5	1	721-012P	PLT, HEIGHT ADJUST, INSIDE
6	1	F-1009-02	WASHER, FLAT
7	8	F-2063	NUT, 5/16-18, NYLOC, FLANGED, YZ
8	3	F-2123	FHCS, 5/16-18 X 1-3/4", YZ, GR5
9	4	F-2220	FHCS, 5/16-18 X 4", YZ, GR5
10	1	F-2248	FHCS, 5/16-18 X 2-1/4", YZ, GR8
11	1	H-1850	GRIP, VINYL
12	1	H-1926	1/4" X 1" HANDLE GRIP
13	2	H-2960	HANGER BEARING
14	4	H-2963	SPACER, HANDLE
15	1	H-3013	DECK HEIGHT PIN
16	1	P-13271	DECAL, 4-1/2" DECK HEIGHT

# DECK SCISSOR LIFT ASS'Y

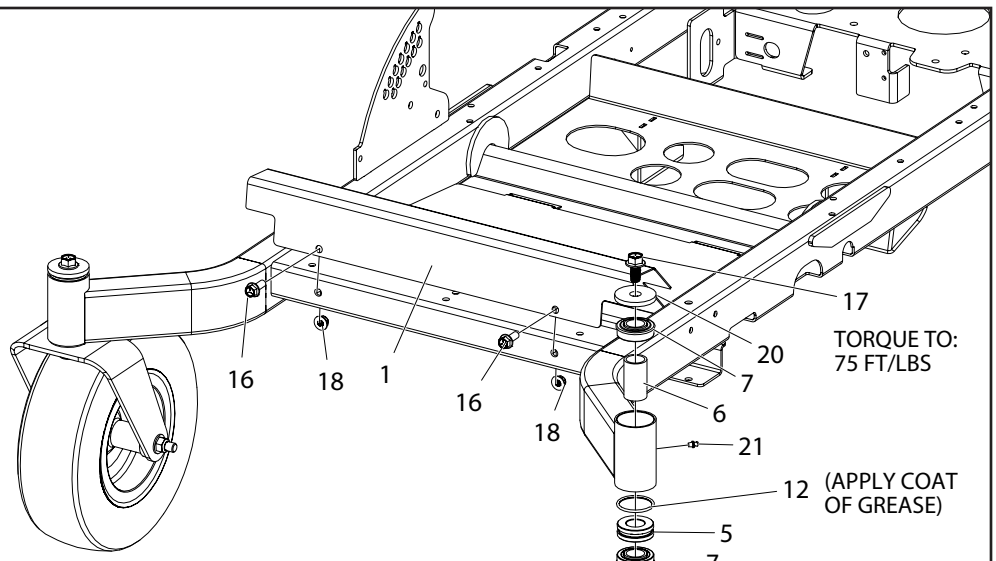
LEFT SIDE SHOWN



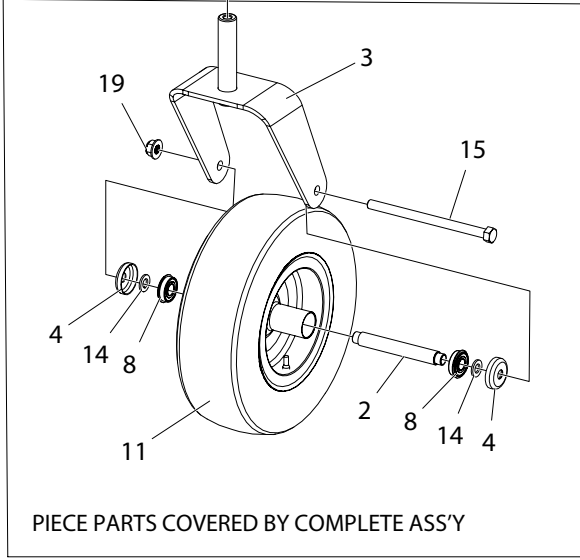
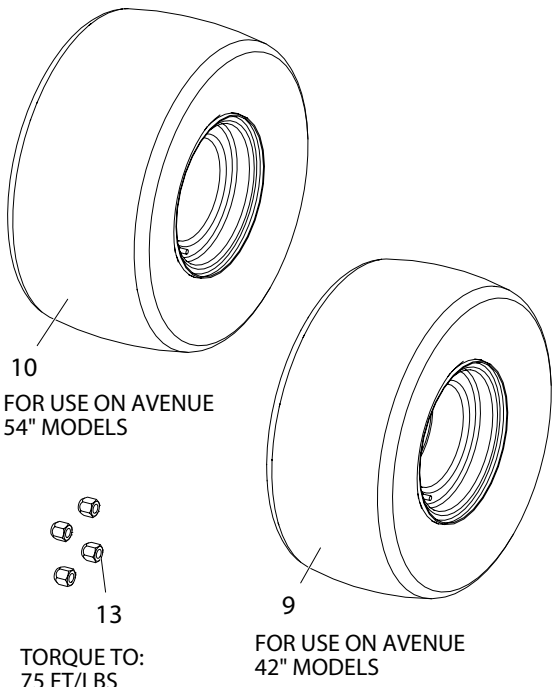
ITEM #	QTY	PART #	DESCRIPTION
1	4	714-028P	BEARING, DECK PIVOT
2	1	714-045P	PIN, REAR STOP
3	1	714-207W	WLDT, DROP LINK, RH
4	1	714-208W	WLDT, DROP LINK, LH
5	2	714-260P	SLEEVE, ROLLER
6	1	714-273P	PIN, DECK HINGE
7	1	720-024W	WLDT, SCISSOR BAR, R
8	1	720-025W	WLDT, SCISSOR BAR, L
9	1	720-029W	WLDT, DECK MOUNT, R
10	1	720-030W	WLDT, DECK MOUNT, L
11	2	F-1009-02	WASHER, FLAT

ITEM #	QTY	PART #	DESCRIPTION
12	4	F-1491	COTTER PIN, 1/8" X
13	6	F-1521	WASHER, 1/2" CUSTOM, YZ
14	2	F-2009	ROLL PIN, SPIROL, 1/4 X 1-1/2"
15	2	F-2151	NUT, 3/8-16 NYLOC, FLANGED, YZ
16	2	F-2193	FHCS, 3/8-16 X 6", YZ, GR5
17	2	F-2223	HHCS, 5/16-18 X 1/2", NY PATCH, ZINC, GR5
18	2	F-2236	CASTLE NUT, 1/2-20
19	6	H-2239	1/2" RUE RING
20	2	H-3038	SPACER, SCISSOR
21	2	H-3039	WASHER, SPECIAL, 1/2" X 1-1/4"

# FOOT DECK & TIRES {AVENUE}



## REAR DRIVE TIRES



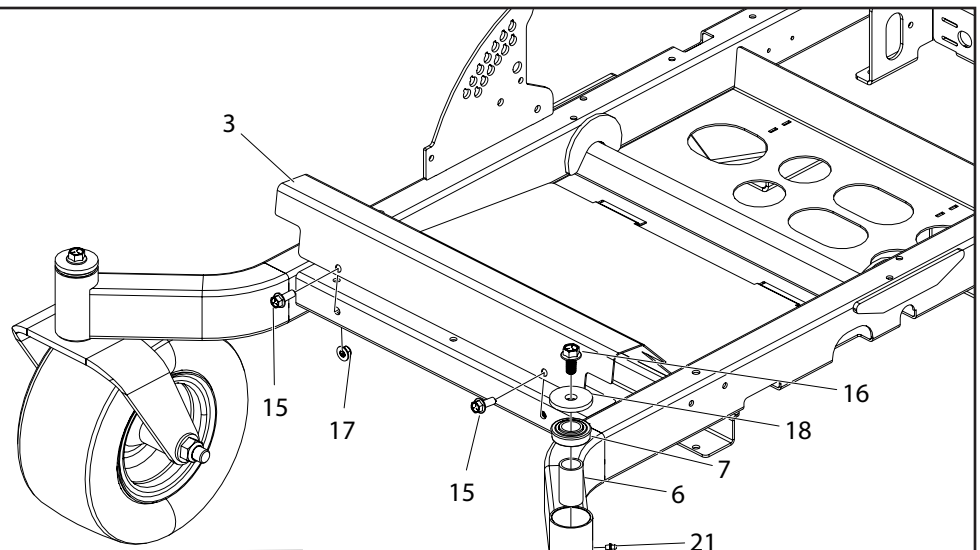
COMPLETE ASSEMBLIES AVAILABLE  
UPON REQUEST

714-228A - LEFT  
714-229A - RIGHT

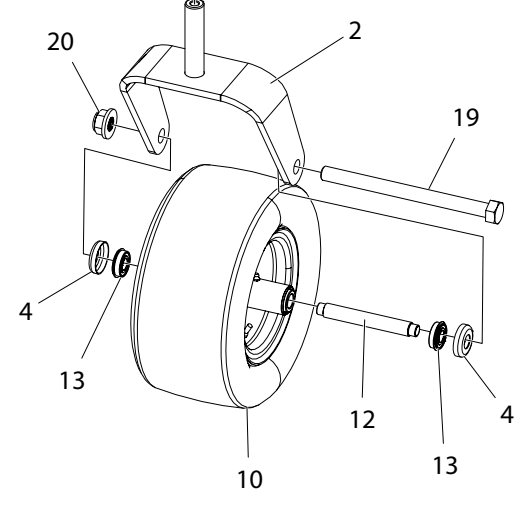
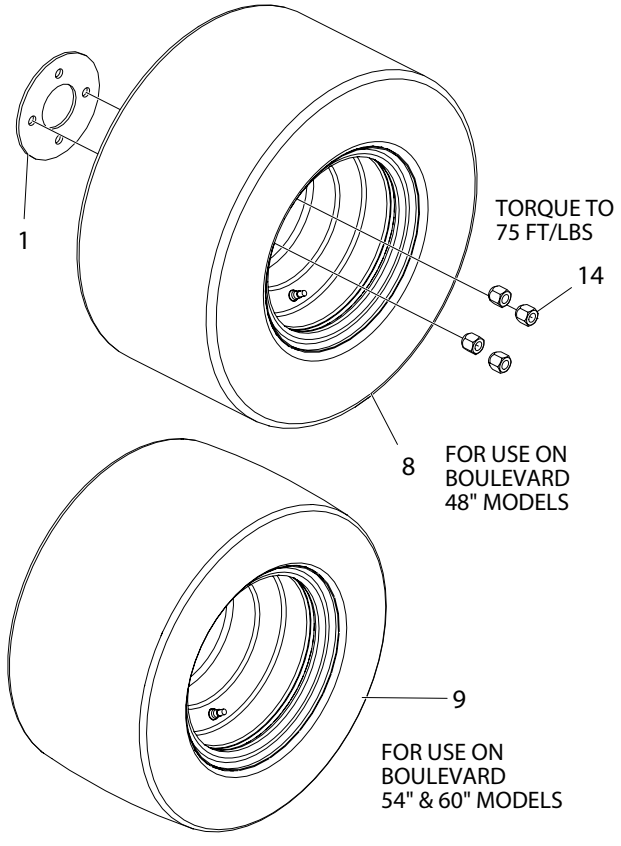
ITEM #	QTY	PART #	DESCRIPTION
1	1	714-046P	PLATE, FLOOR
2	2	714-225P	SPACER, CASTER BEARING
3	2	714-227W	WLD'T, CASTER YOKE
4	4	714-277P	CAP, BEARING, SMALL
5	2	720-047P	DRAG RING
6	2	720-048P	SPACER, BEARING, CASTER
7	4	D-2008-02	BEARING, SPD, SF-16-32
8	4	D-3432	BEARING, 5/8 I.D. X 1-3/8 O.D.
9	2	D-3729	TIRE, 18 X 8.5-8 TURFMASTER
10	2	D-3870	TIRE, 18 X 9.50-8, TURF MASTER
11	2	D-3956	TIRE ASS'Y, 13 X 5-6, WHITE, SM BEARING, SMOOTH

ITEM #	QTY	PART #	DESCRIPTION
12	2	D-3969	O-RING, -.224, 70 DURO NITRILE
13	8	F-1499	LUG NUT, 1/2-20, YZ
14	4	F-1521	WASHER, 1/2" CUSTOM, YZ
15	2	F-1663	HHCS, 1/2-13 X 7-1/2", YZ, GR5
16	2	F-2141	FHCS, 3/8-16 X 1", YZ, GR5
17	2	F-2143	FHCS, 1/2-13 X 1", YZ, GR5
18	2	F-2151	NUT, 3/8-16 NYLOC, FLANGED, YZ
19	2	F-2152	NUT, 1/2-13 NYLOC, FLANGED, YZ
20	2	F-2179	WASHER, CASTER, .531 ID X 2.25 OD X .25THK, YZ
21	2	H-1056	1/4" GREASE FITTING

# FOOT DECK & TIRES {BOULEVARD}



## REAR DRIVE TIRES



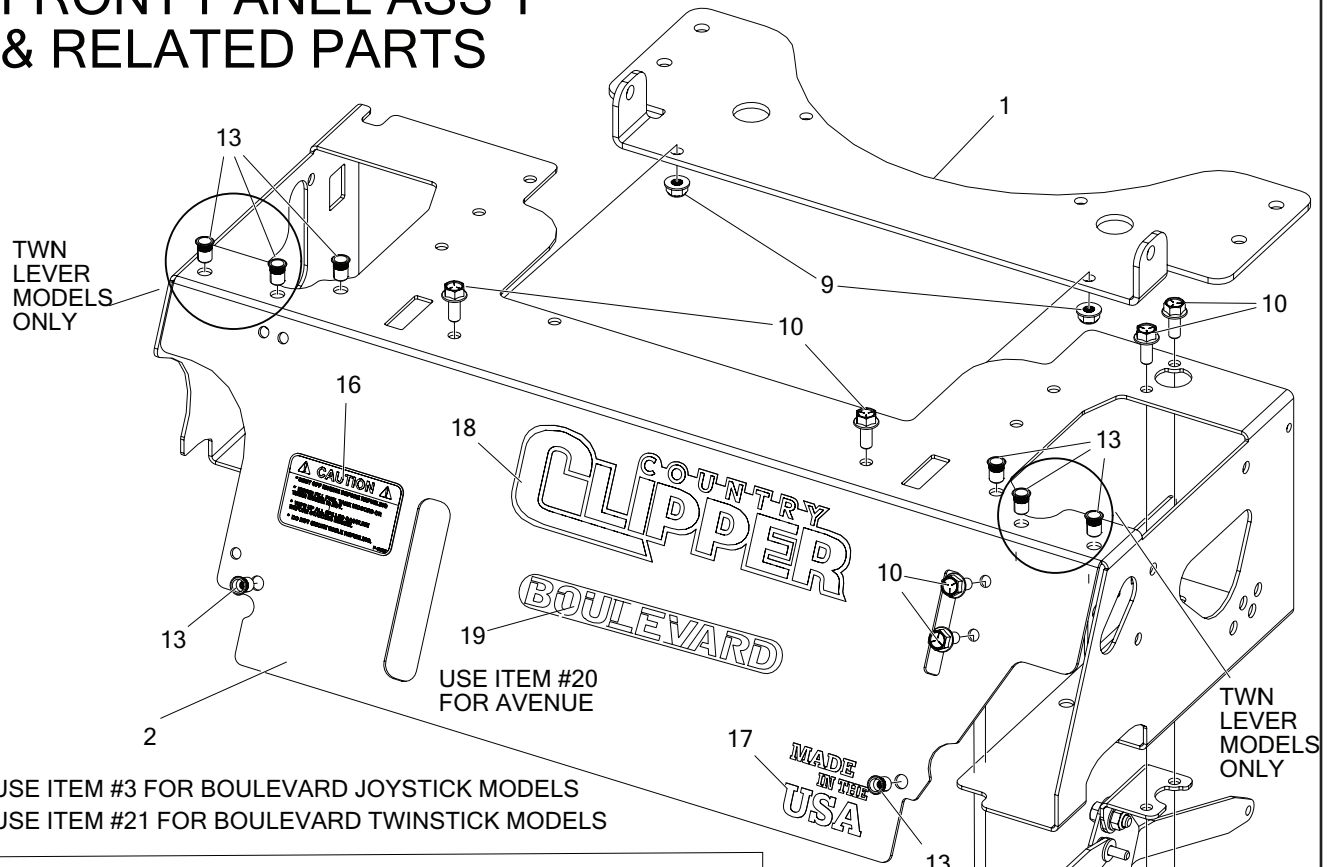
ITEMS #12 & #13 ARE  
PART OF ITEM #10

ITEM #	QTY	PART #	DESCRIPTION
1	2	659-092P	WHEEL BACKING PLATE
2	2	714-219W	WLD'T, CASTER YOKE
3	1	714-046P	PLATE, FLOOR
4	4	714-252P	CAP, BEARING, SMALL, 3/4"
5	2	720-047P	DRAG RING
6	2	720-048P	SPACER, BEARING, CASTER
7	4	D-2008-02	BEARING, SPD, SF-16-32
8	2	D-3353	TIRE ASS'Y, 20 X 10-10
9	2	D-3787	TIRE ASS'Y 20 X 12-10
10	2	D-3957	TIRE ASS'Y, 13 X 6.5-6, WHITE, SM BEARING, SMOOTH
11	2	D-3969	O-RING, -224, 70 DURO NITRILE

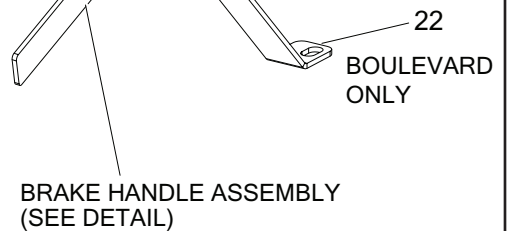
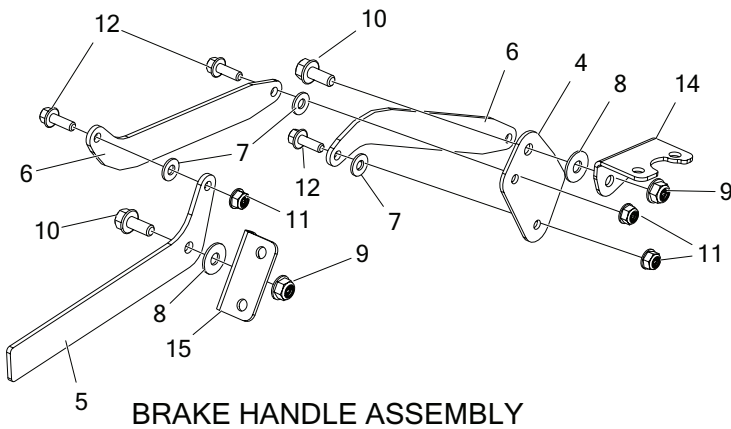
ITEM #	QTY	PART #	DESCRIPTION
12	2	D-3977	SPACER FOR D-3957
13	4	D-3978	BEARING FOR D-3957
14	8	F-1499	LUG NUT, 1/2-20, YZ
15	2	F-2141	FHCS, 3/8-16 X 1", YZ, GR5
16	2	F-2143	FHCS, 1/2-13 X 1", YZ, GR5
17	2	F-2151	NUT, 3/8-16 NYLOC, FLANGED, YZ
18	2	F-2179	WASHER, CASTER, .531 ID X 2.25 OD X .25THK, YZ
19	2	F-2194	HHCS, 3/4-10 X 9-1/2", YZ, GR5
20	2	F-2195	NUT, FLANGE NYLOC, YZ
21	2	H-1056	1/4" GREASE FITTING



# FRONT PANEL ASS'Y & RELATED PARTS



USE ITEM #3 FOR BOULEVARD JOYSTICK MODELS  
 USE ITEM #21 FOR BOULEVARD TWINSTICK MODELS

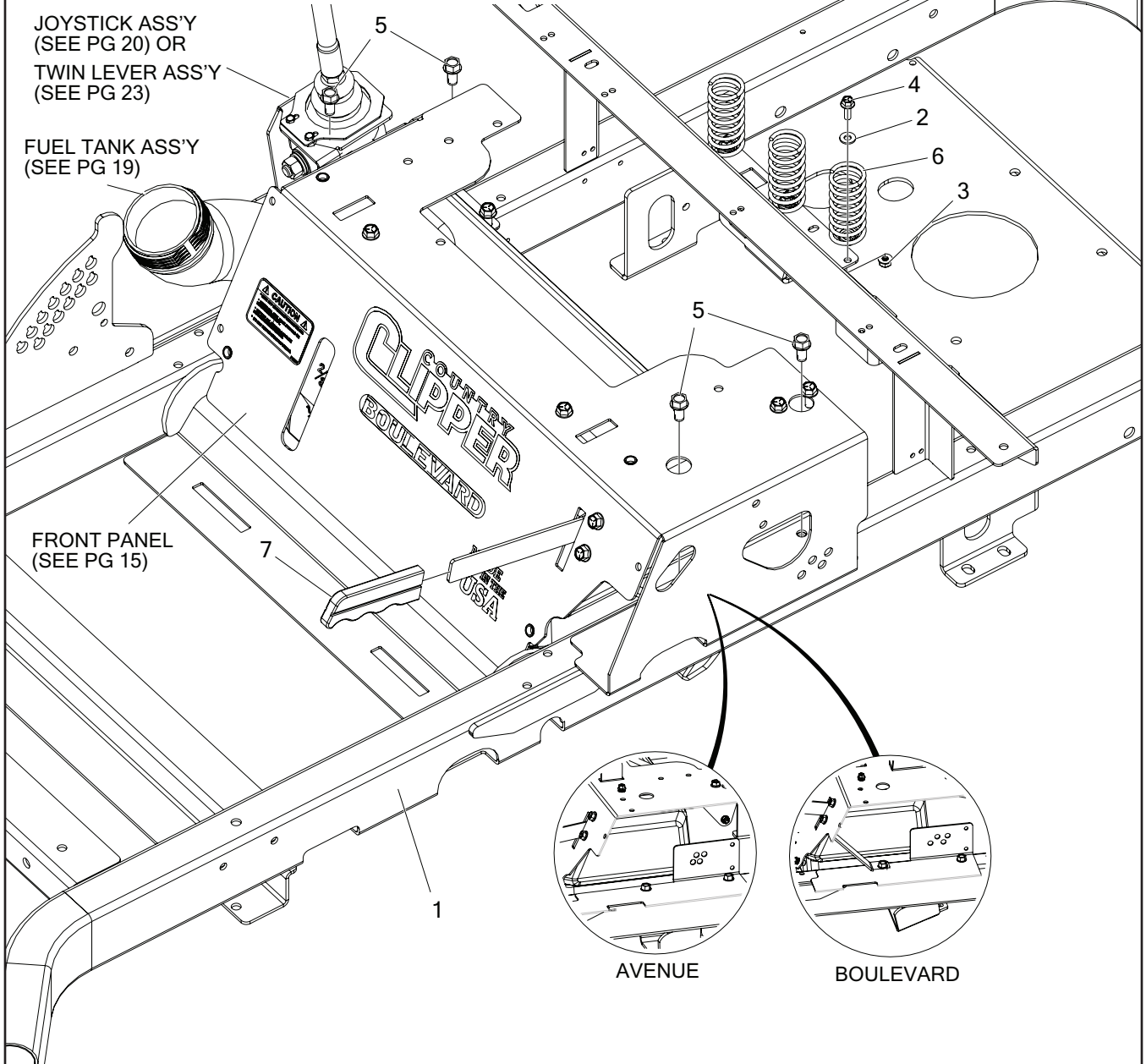


NOTE:  
 ITEMS #13, 16, 17, 18, 19  
 ARE PARTS OF ASS'Y #2

ITEM #	QTY	PART #	DESCRIPTION
1	1	714-290P	PLATE, BASE, SEAT MOUNT
2	1	714-020A	FRONT PANEL W/ DECALS, AVENUE
3	1	714-021A	FRONT PANEL W/ DECALS, BOULEVARD, JS
4	1	714-345P	CRANK PLATE, PARK BRAKE
5	1	714-346P	HANDLE, PARK BRAKE
6	2	714-349P	BAR, LINK, PARK BRAKE
7	3	F-1009-01	WASHER, FLAT STD, STEEL, 1/4" YELLOW PLATED
8	2	F-1009-02	WASHER, FLAT
9	8	F-2063	NUT, 5/16-18, NYLOC, FLANGED, YZ
10	8	F-2120	FHCS, 5/16-18 X 3/4", YZ, GR5
11	3	F-2132	NUT, 1/4-20 NYLOC, FLANGED, YZ

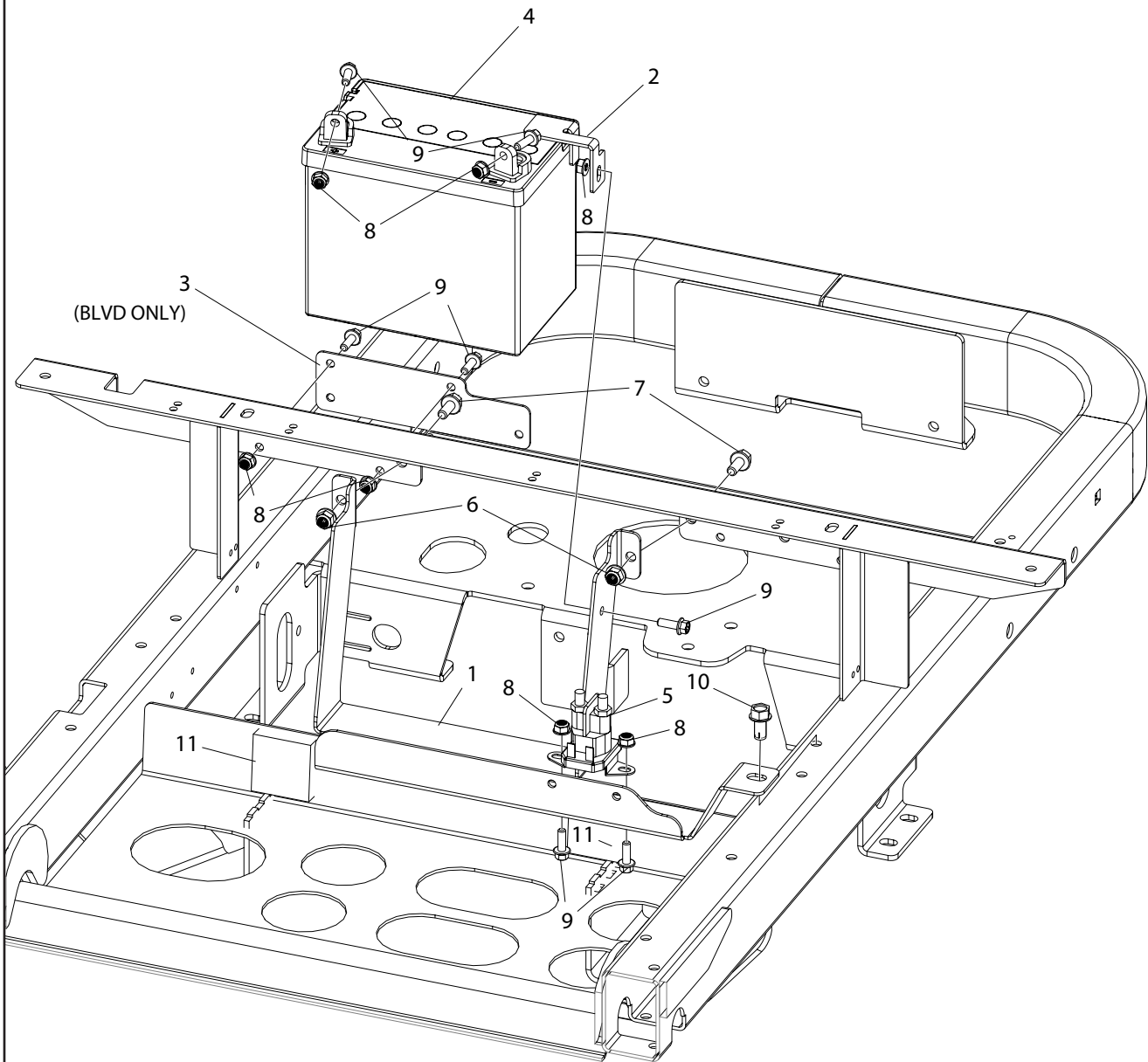
ITEM #	QTY	PART #	DESCRIPTION
12	3	F-2162	FHCS, 1/4-20 X 3/4", YZ, GR5
13	8	----	NUT, RIVET, 1/4-20, OPEN END, .027-.165 MAT'L THK
14	1	H-2934	PIVOT, BRAKE CRANK
15	1	H-2935	PLATE, BRAKE HANDLE
16	1	P-12557	DECAL, "CAUTION FUEL"
17	1	P-13000	DECAL, MADE IN THE USA
18	1	P-13312	DECAL, LOGO, CHROME w/BLK, LG
19	1	P-13316	DECAL, CHALLENGER
20	1	P-13365	DECAL, XLT
21	1	714-213A	FRONT PANEL W/ DECALS, BOULEVARD TS
22	1	714-351P	BRACE, FRONT PANEL

# FRONT PANEL ASS'Y & RELATED PARTS (CON'T)



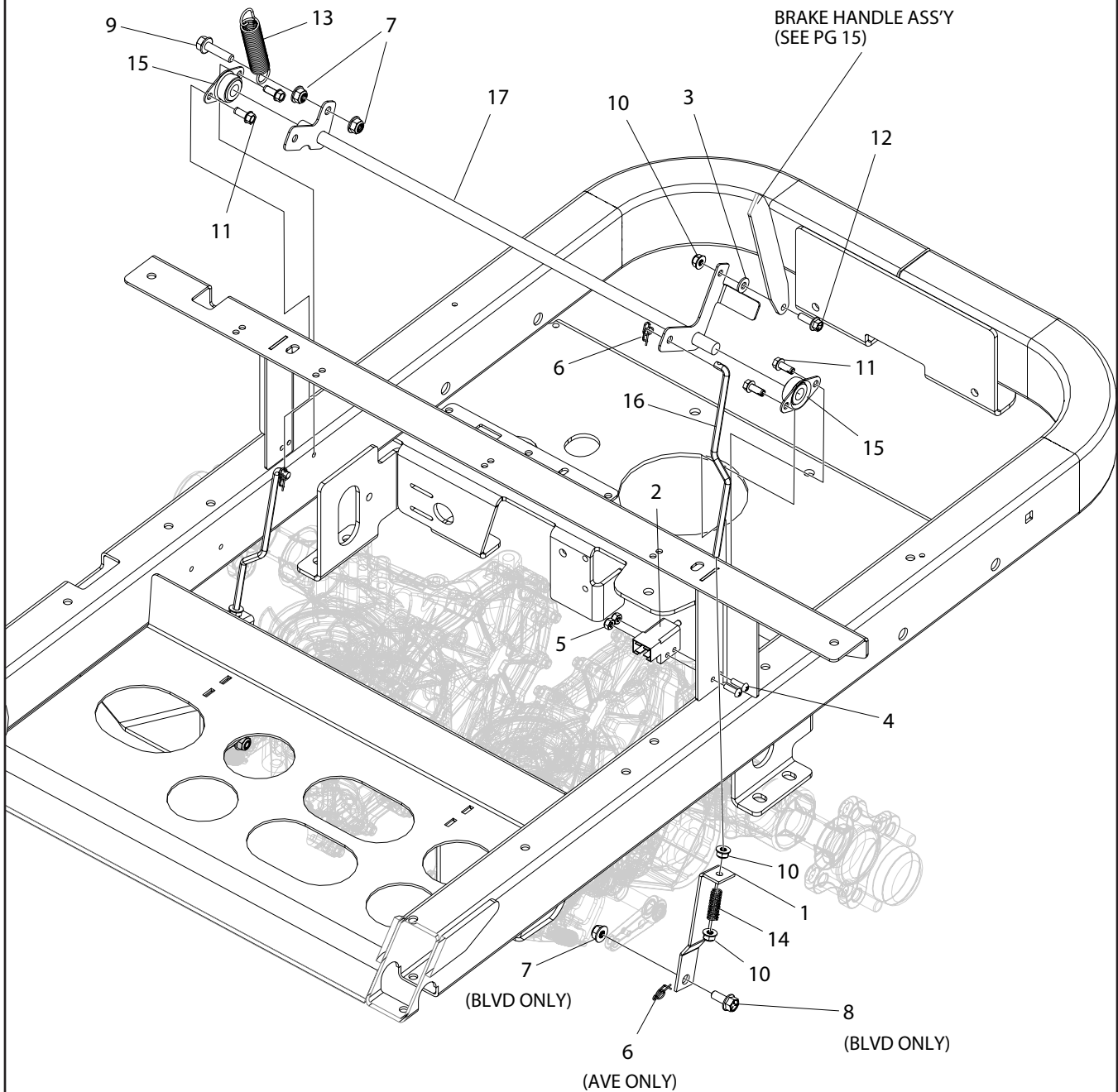
ITEM #	QTY	PART #	DESCRIPTION
1	1	D-3975	WLDT, FRAME, FIXED FRONT END
2	3	F-1009-01	WASHER, FLAT STD, STEEL, 1/4" YELLOW PLATED
3	3	F-2132	NUT, 1/4-20 NYLOC, FLANGED, YZ
4	3	F-2162	FHCS, 1/4-20 X 3/4", YZ, GR5
5	4	F-2219	HFCS, 3/8-16 X 3/4", CZ, THD FORMING
6	3	H-1920	SPRING, SEAT
7	1	H-1926	1/4" X 1" HANDLE GRIP

# BATTERY BOX



ITEM #	QTY	PART #	DESCRIPTION
1	1	714-034P	BOX, BATTERY
2	1	714-430P	PLT, BATTERY HOLD DOWN
3	1	721-029P	PLT, TANK MOUNT
4	1	E-6604	BATTERY, 12V, 150CCA
5	1	E-6612	SOLENOID, 12V STARTER, 4 TERM, UNSEALED
6	2	F-2063	NUT, 5/16-18, NYLOC, FLANGED, YZ
7	2	F-2120	FHCS, 5/16-18 X 3/4", YZ, GR5
8	7	F-2132	NUT, 1/4-20 NYLOC, FLANGED, YZ
9	7	F-2162	FHCS, 1/4-20 X 3/4", YZ, GR5
10	1	F-2219	HFCS, 3/8-16 X 3/4", CZ, THD FORMING
11	2	H-2990	WEATHER-RESISTANT NEOPRENE FOAM (ADHESIVE) 1/2"

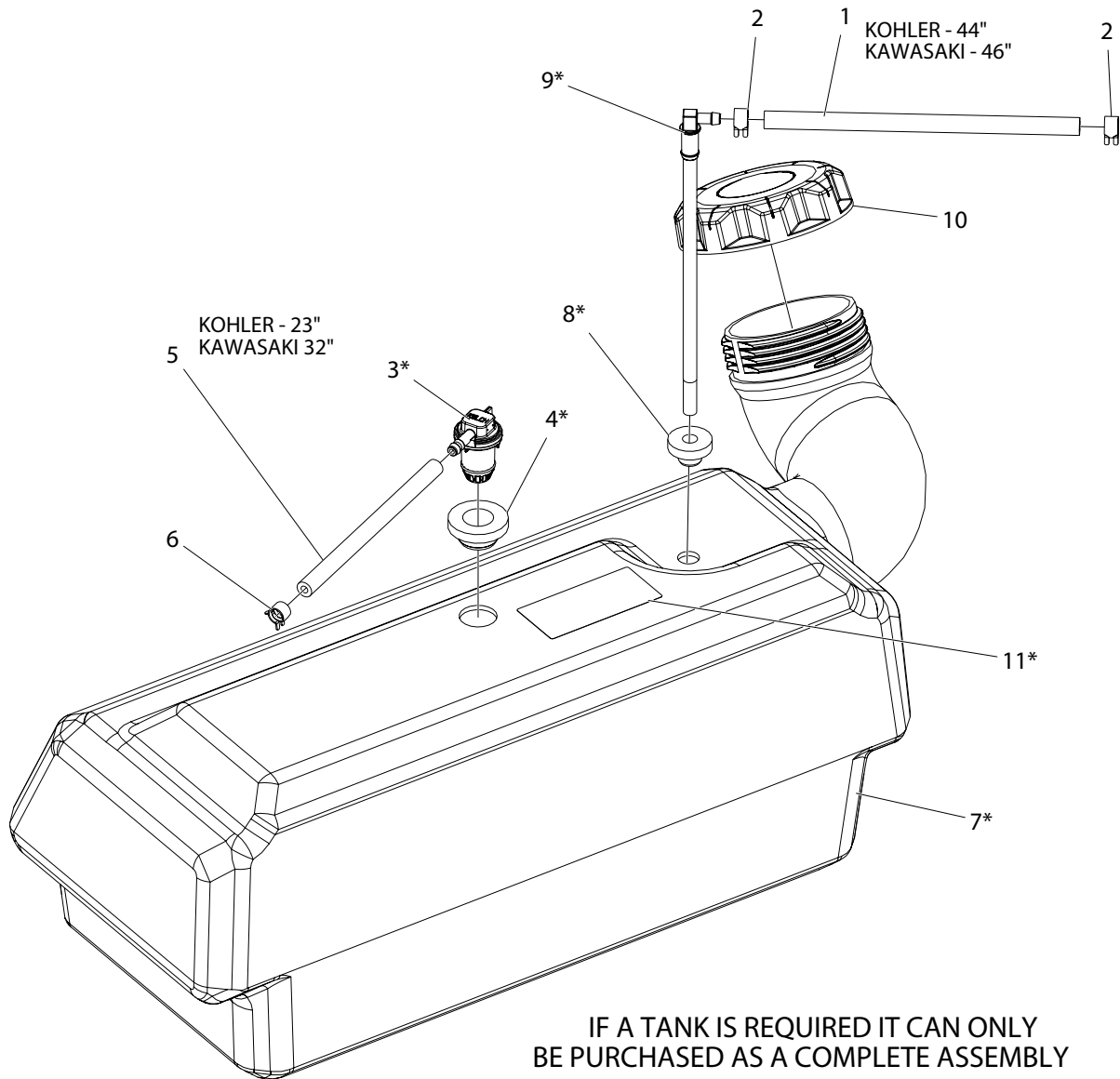
# BRAKE ASSEMBLY



ITEM #	QTY	PART #	DESCRIPTION
1	2	659-159P	BRAKE LINK
2	1	E-6297	BRAKE SWITCH
3	1	F-1009-01	WASHER,FLAT STD, STEEL, 1/4" YELLOW PLATED
4	2	F-1022-26	MACHINE SCREW,RND, 10-32 X 5/8, SLOTTED, CZ
5	2	F-1448	LOCKNUT, 10-32 NYLOC YELLOW PLTD
6	4	F-1492	RUE RING, 5/16
7	4	F-2063	NUT, 5/16-18, NYLOC, FLANGED, YZ
8	2	F-2120	FHCS, 5/16-18 X 3/4", YZ, GR5
9	1	F-2122	FHCS, 5/16-18 X 1-1/4", YZ, GR5, FULL THD

ITEM #	QTY	PART #	DESCRIPTION
10	5	F-2132	NUT, 1/4-20 NYLOC, FLANGED, YZ
11	4	F-2134	FHCS, 1/4-20 X 0.625", YZ, SELF TAPPING
12	1	F-2162	FHCS, 1/4-20 X 3/4", YZ, GR5
13	1	H-1635	SPRING, EXT, 3/4" OD X 4" OAL
14	2	H-1637	COMPRESSION SPRING, .045 X .420 X 1.25
15	2	H-2921	FLANGE BEARING-0.500"
16	2	H-2924	BRAKE LINK ROD
17	1	H-2953	WLDT, PARK BRAKE

# FUEL TANK ASSEMBLY



IF A TANK IS REQUIRED IT CAN ONLY  
BE PURCHASED AS A COMPLETE ASSEMBLY

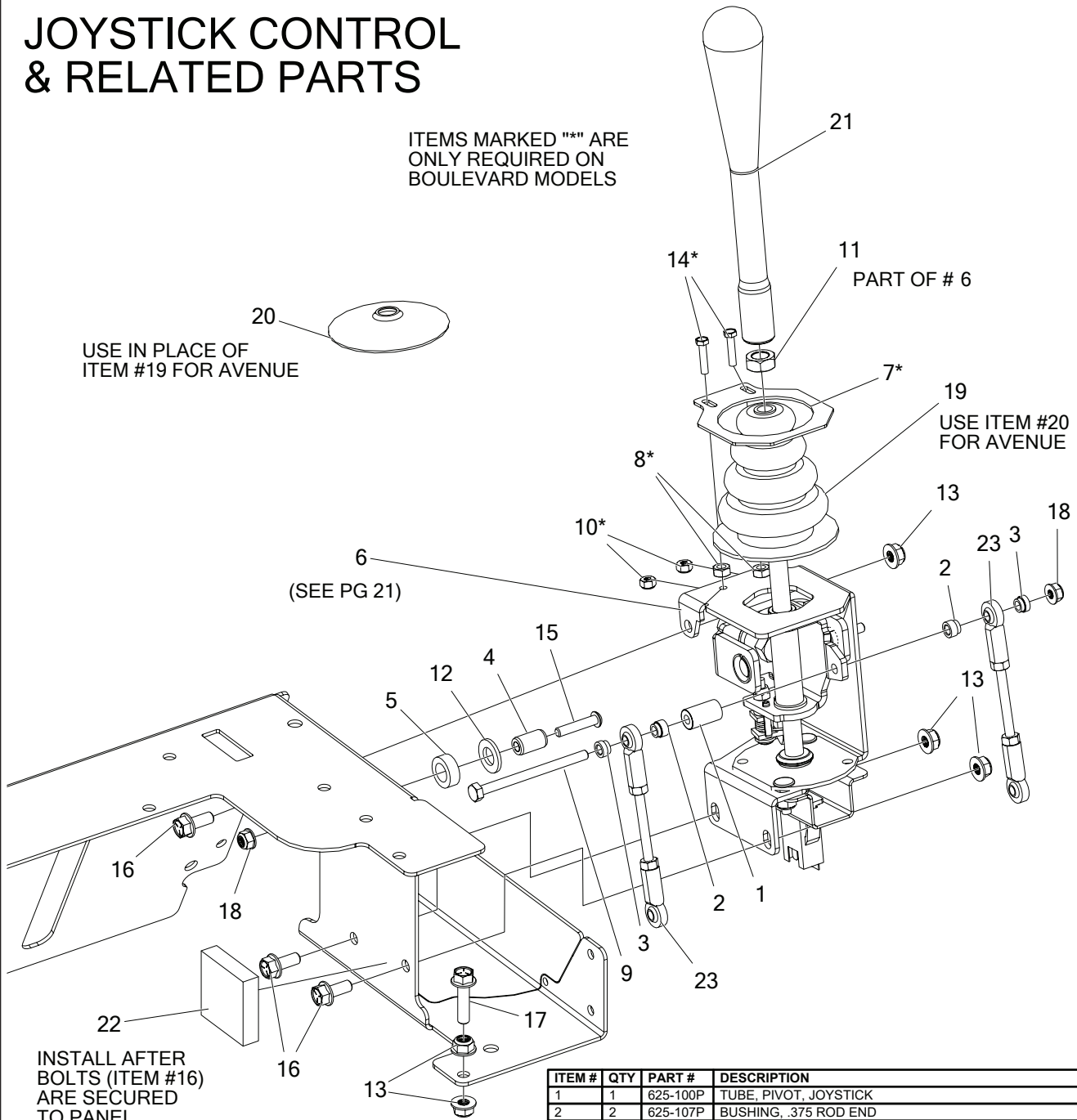
(PARTS MARKED "\*" ARE INCLUDED IN ASS'Y)

ITEM #	QTY	PART #	DESCRIPTION
1	1	H-1648	FUEL LINE, 1/2" O.D., 1/4" I.D.
2	2	H-1687	1/2 O.D. HOSE SPRING CLAMP
3	1	H-2678	KELCH REMOTE VENT
4	1	H-2679	KELCH REMOTE VENT GROMMET
5	1	H-2697	HOSE, FUEL LINE .188 ID X .406 OD
6	1	H-2698	CLAMP, .406 OD FUEL LINE
7	1	H-2724	ASSEMBLY, FUEL TANK, SMALL
8	1	H-2741	GROMMET, PICK UP TUBE (DAPCO #12240)
9	1	H-2742	PICK UP TUBE (DAPCO INDUSTRIES)
10	1	H-2743	3.50" CARB CAP W/ TETHER
11	1	P-12922	VENDOR SUPPLIED EPA CERT. LABEL

# JOYSTICK CONTROL & RELATED PARTS

ITEMS MARKED "\*" ARE ONLY REQUIRED ON BOULEVARD MODELS

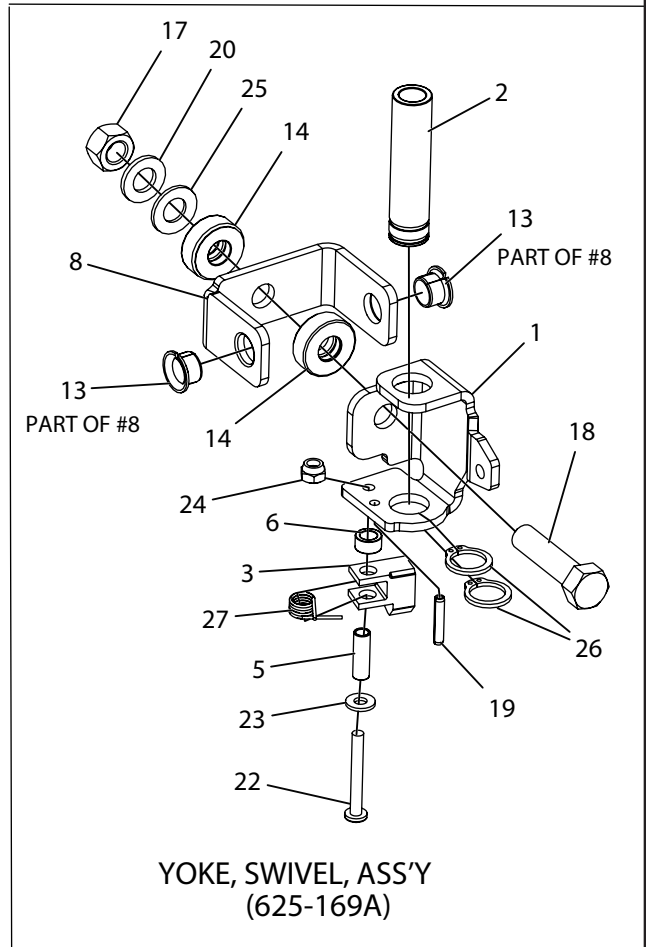
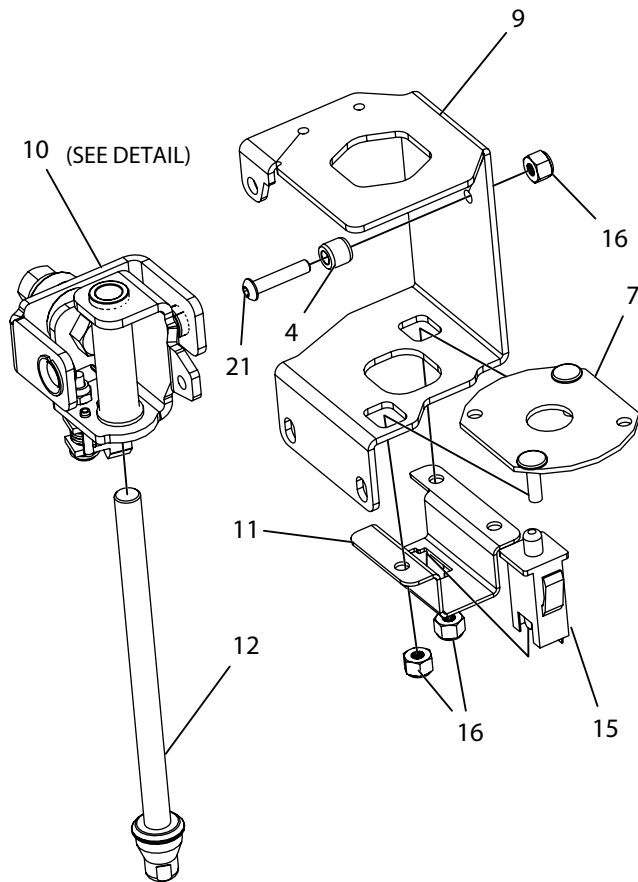
20  
USE IN PLACE OF ITEM #19 FOR AVENUE



INSTALL AFTER BOLTS (ITEM #16) ARE SECURED TO PANEL

ITEM #	QTY	PART #	DESCRIPTION
1	1	625-100P	TUBE, PIVOT, JOYSTICK
2	2	625-107P	BUSHING, .375 ROD END
3	2	625-116P	BUSHING, .375 ROD END, SHORT
4	1	625-119P	PIN, PIVOT, JS, LONG
5	1	625-126P	SPACER, JOYSTICK PANEL
6	1	625-171A	JOYSTICK ASS'Y, SHORT
7	1	720-038P	PLT, BOOT RETAINER
8	2	F-1011-01	NUT, HEX, 1/4-20 UNC-2B YELLOW PLATED
9	1	F-1020-01	CAPSCREW, 1/4-20 X 3-1/2", YZ, GR5
10	2	F-1448	LOCKNUT, 10-32 NYLOC YELLOW PLTD
11	1	F-1462	HEX JAM NUT, 1/2-20, CZ
12	1	F-1521	WASHER, 1/2" CUSTOM, YZ
13	5	F-2063	NUT, 5/16-18, NYLOC, FLANGED, YZ
14	2	F-2100	HHMS, 10-32 X 7/8", CZ
15	1	F-2103	SHCS, BUTTON HD, 1/4-20 X 1", CZ
16	3	F-2120	FHCS, 5/16-18 X 3/4", YZ, GR5
17	1	F-2122	FHCS, 5/16-18 X 1-1/4", YZ, GR5, FULL THD
18	2	F-1158	NUT, 1/4-20 CENTER LOCKING, YZ
19	1	H-1991	JOY STICK BOOT
20	1	H-2947	BOOT, LOW PROFILE
21	1	H-2964	HANDLE, JOYSTICK
22	1	H-2990	WEATHER-RESISTANT NEOPRENE FOAM (ADHESIVE) 1/2"
23	2	H-3025	LINKAGE, UPPER, 1/4-28 X 5

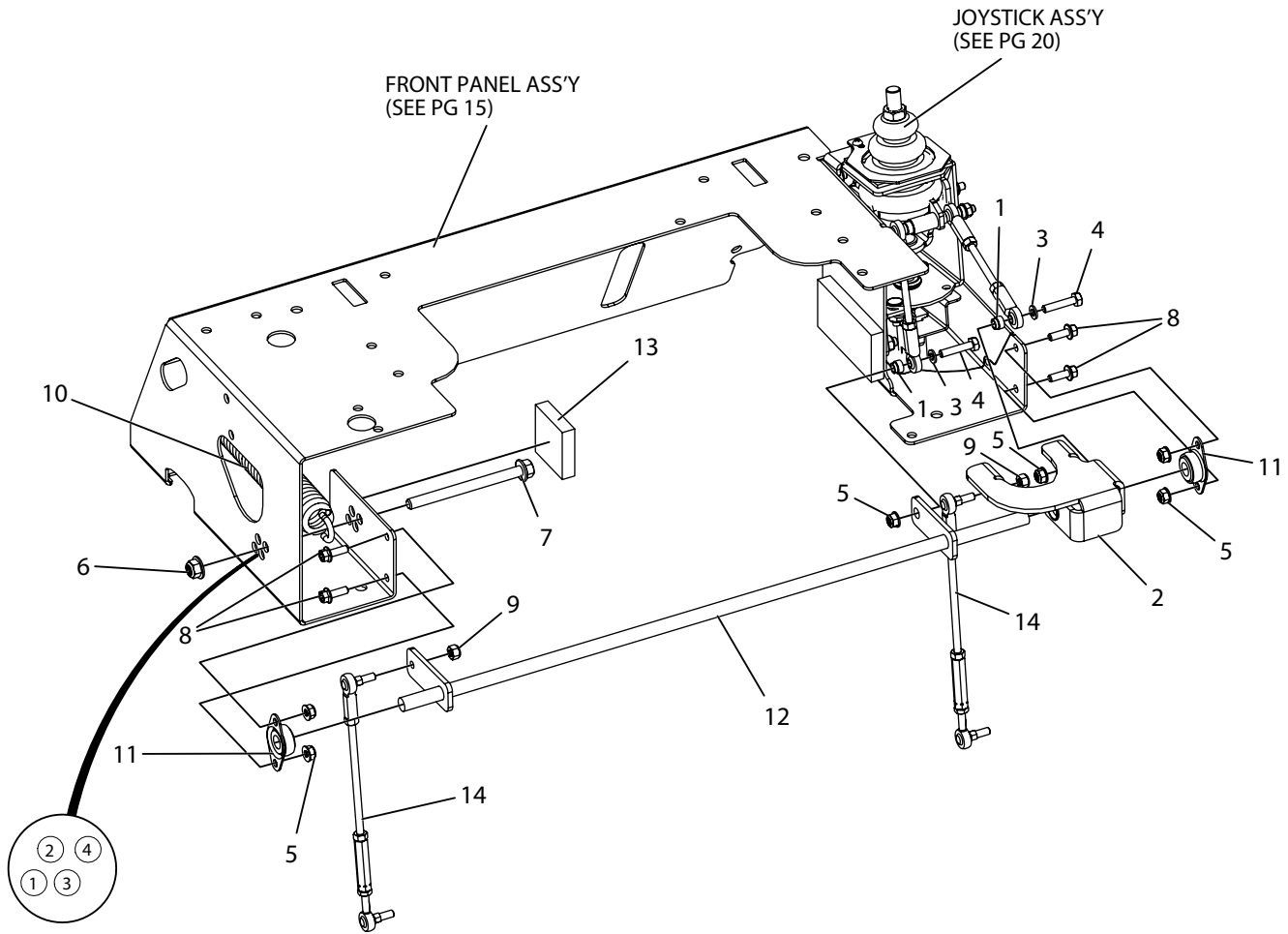
# JOYSTICK ASSEMBLY {625-171A}



ITEM #	QTY	PART #	DESCRIPTION
1	1	625-096P	YOKE, SWIVEL, JOYSTICK
2	1	625-099P	TUBE, GUIDE, CONTROL ROD
3	1	625-103P	TAB, CAM DETENT
4	1	625-106P	PIN, PIVOT, JS
5	1	625-124P	TUBE-SPACER, DETENT CAM
6	1	625-125P	SPACER, CAM DETENT
7	1	625-127W	NEUTRAL PLATE WELDMENT
8	1	625-128A	PIVOT ASSEMBLY
9	1	625-154P	HOUSING, JOYSTICK
10	1	625-169A	YOKE, SWIVEL ASSEMBLY
11	1	659-285P	MOUNT, SWITCH
12	1	709-169A	ROD ASSEMBLY, SHORT, 1/2"
13	2	D-3784	BUSHING, DU 1/2 DIA X 3/8 WIDE
14	2	D-3931	THRUST BEARING

ITEM #	QTY	PART #	DESCRIPTION
15	1	E-6474	SWITCH, SNAP MOUNT
16	3	F-1005-01	NUT, 1/4-20 w/NYLOC, YZ
17	1	F-1005-05	NUT, 1/2-13, CENTERLOCK, YZ, GR5
18	1	F-1293	HHCS, 1/2-13 X 2", YZ, GR5
19	1	F-1503	PIN, SPIROL 3/16 DIA X 1 X .010 THK
20	1	F-1521	WASHER, 1/2" CUSTOM, YZ
21	1	F-2103	SHCS, BUTTON HD, 1/4-20 X 1", CZ
22	1	F-2135	SCREW, PANHEAD, PHILLIPS #12-24 X 1.75 CZ
23	1	F-2136	WASHER, FLAT, #12 PLAIN, CZ
24	1	F-2137	NUT, #12-24, NYLOCK
25	1	H-2704	SPRING, BELLEVILLE, .50 X 1 X .073
26	2	H-2705	RING, RETAINING, .75 EXT.
27	1	H-2710	SPRING, DETENT, JOYSTICK

# JOYSTICK ASSEMBLY MOUNTING & RELATED PARTS

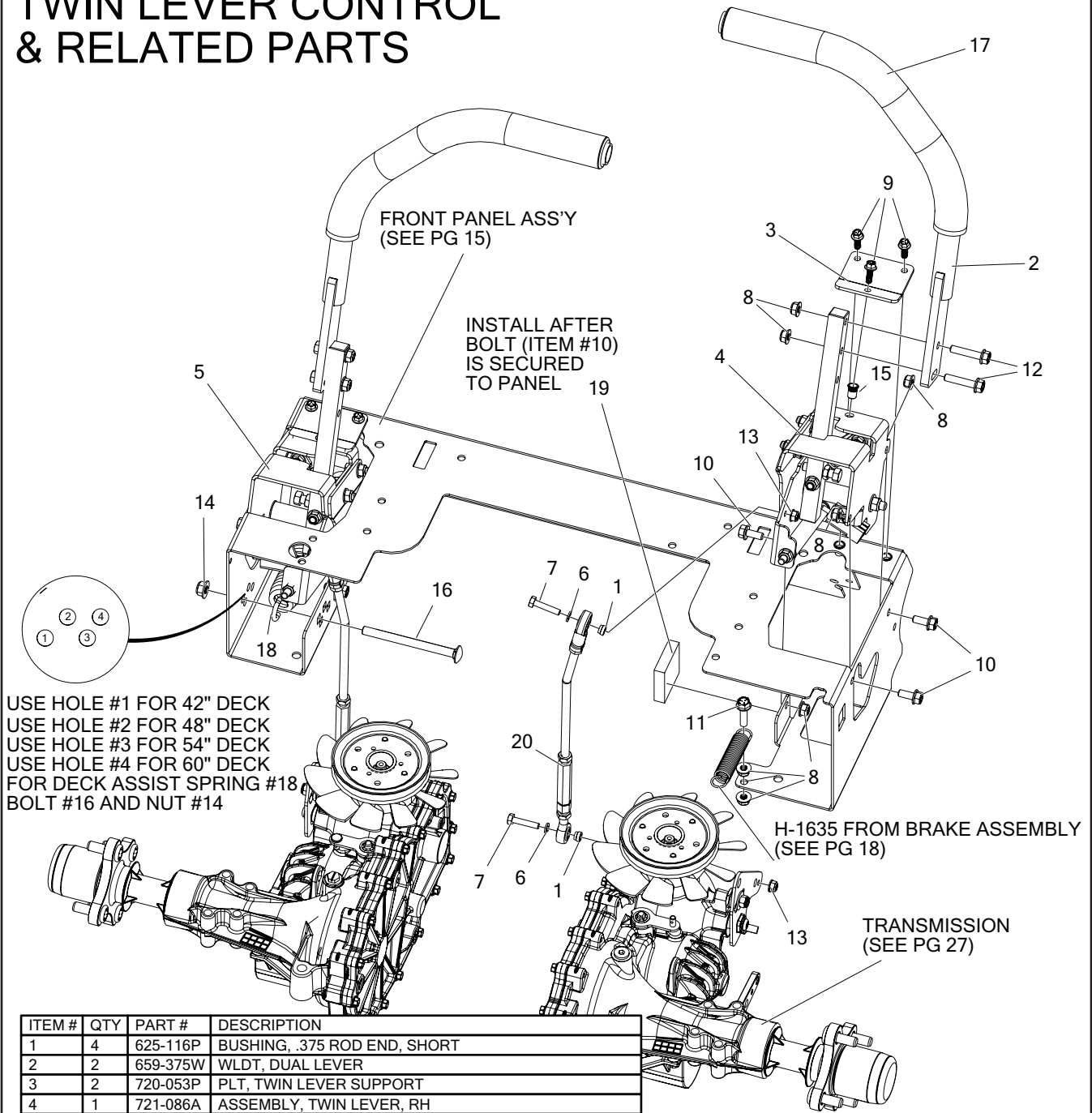


USE HOLE #1 FOR 42"  
 USE HOLE #2 FOR 48"  
 USE HOLE #3 FOR 54"  
 USE HOLE #4 FOR 60"  
 FOR DECK ASSIST SPRING #10  
 BOLT #7 AND NUT #6

ITEM #	QTY	PART #	DESCRIPTION
1	2	625-107P	BUSHING, .375 ROD END
2	1	714-084A	ASSEMBLY, PIVOT PLATE
3	2	F-1019-01	WASHER, LOCK, 1/4, YZ
4	2	F-1539	HHCS, 1/4-20 X 1-1/4", YZ, GR5
5	6	F-2132	NUT, 1/4-20 NYLOC, FLANGED, YZ
6	1	F-2151	NUT, 3/8-16 NYLOC, FLANGED, YZ
7	1	F-2160	FHCS, 3/8-16 X 4-1/2", YZ, GR5
8	4	F-2162	FHCS, 1/4-20 X 3/4", YZ, GR5
9	2	F-2202	NUT, 1/4-20, NYLOC, YZ
10	1	H-2900	SPRING, DECK COUNTER BALANCE
11	2	H-2921	FLANGE BEARING-0.500"
12	1	H-2954	WLDT, JS PIVOT SHAFT
13	1	H-2990	FOAM PAD, 1/2 X 2" x 2"
14	2	H-3021	LINKAGE, CONTROL LOWER



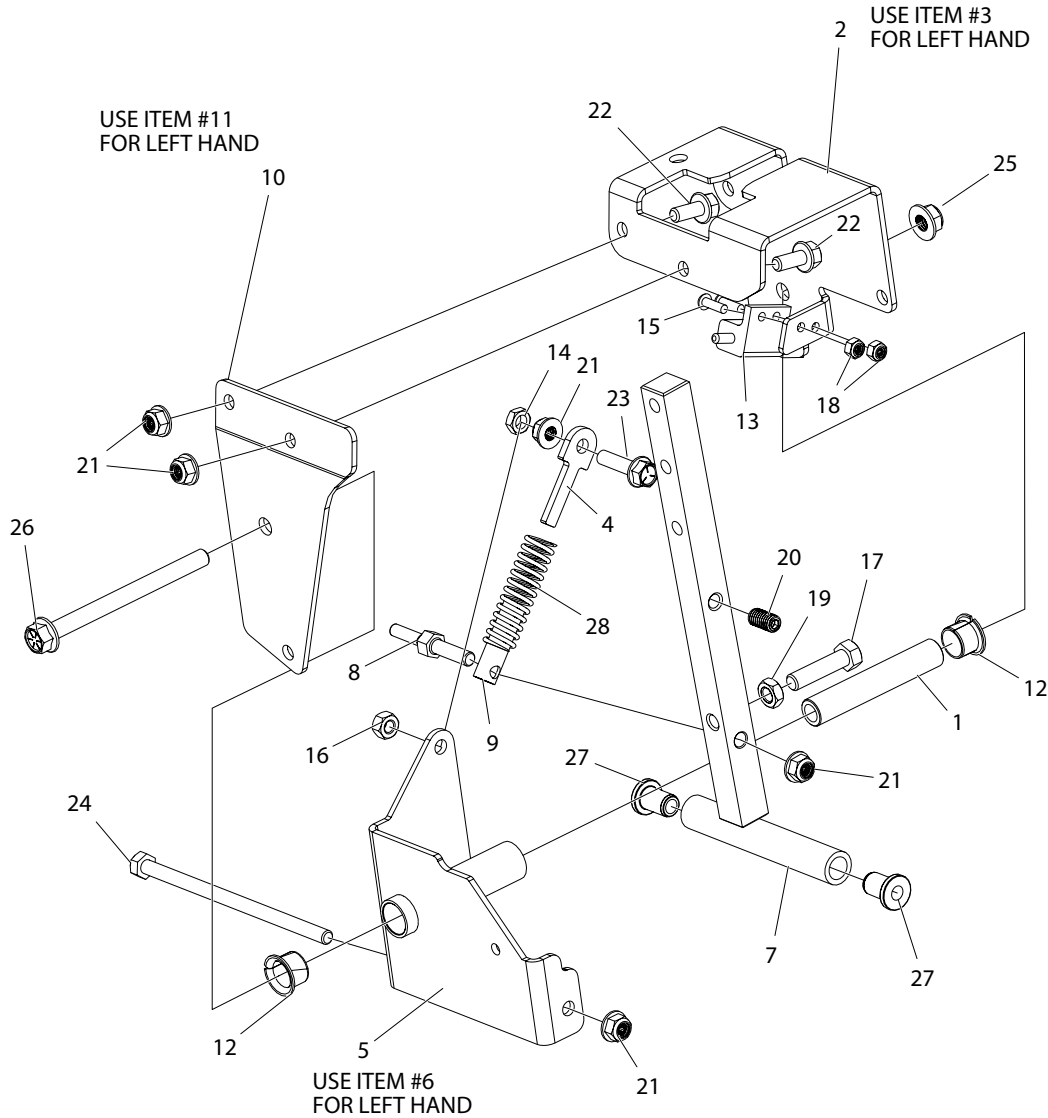
# TWIN LEVER CONTROL & RELATED PARTS



ITEM #	QTY	PART #	DESCRIPTION
1	4	625-116P	BUSHING, .375 ROD END, SHORT
2	2	659-375W	WLDT, DUAL LEVER
3	2	720-053P	PLT, TWIN LEVER SUPPORT
4	1	721-086A	ASSEMBLY, TWIN LEVER, RH
5	1	721-087A	ASSEMBLY, TWIN LEVER, LH
6	4	F-1019-01	WASHER, LOCK, 1/4, YZ
7	4	F-1539	HHCS, 1/4-20 X 1-1/4", YZ, GR5
8	12	F-2063	NUT, 5/16-18, NYLOC, FLANGED, YZ
9	6	F-2119	FHCS, 1/4-20 X 3/4", YZ, GR5, LOCK PATCH
10	6	F-2120	FHCS, 5/16-18 X 3/4", YZ, GR5
11	1	F-2122	FHCS, 5/16-18 X 1-1/4", YZ, GR5, FULL THD
12	4	F-2129	FHCS, 5/16-18 X 1-1/2", YZ, GR5
13	4	F-2132	NUT, 1/4-20 NYLOC, FLANGED, YZ
14	1	F-2151	NUT, 3/8-16 NYLOC, FLANGED, YZ
15	2	F-2229	NUT, RIVET, 1/4-20, OPEN END, .027-.165 MAT'L THK
16	1	F-2267	BOLT, CARRIAGE, 3/8-16 X 4-1/2", YZ, GR5, PARTIAL THD
17	2	H-2739	GRIP, 15", CLOSED END
18	1	H-2900	SPRING, DECK COUNTER BALANCE
19	1	H-2990	WEATHER-RESISTANT NEOPRENE FOAM (ADHESIVE) 1/2"
20	2	H-3037	LINKAGE, OUTER, JS

# TWIN LEVER ASSEMBLY {721-086A - RIGHT SIDE} {721-087A - LEFT SIDE}

(RIGHT HAND SHOWN, LEFT HAND OPPOSITE)

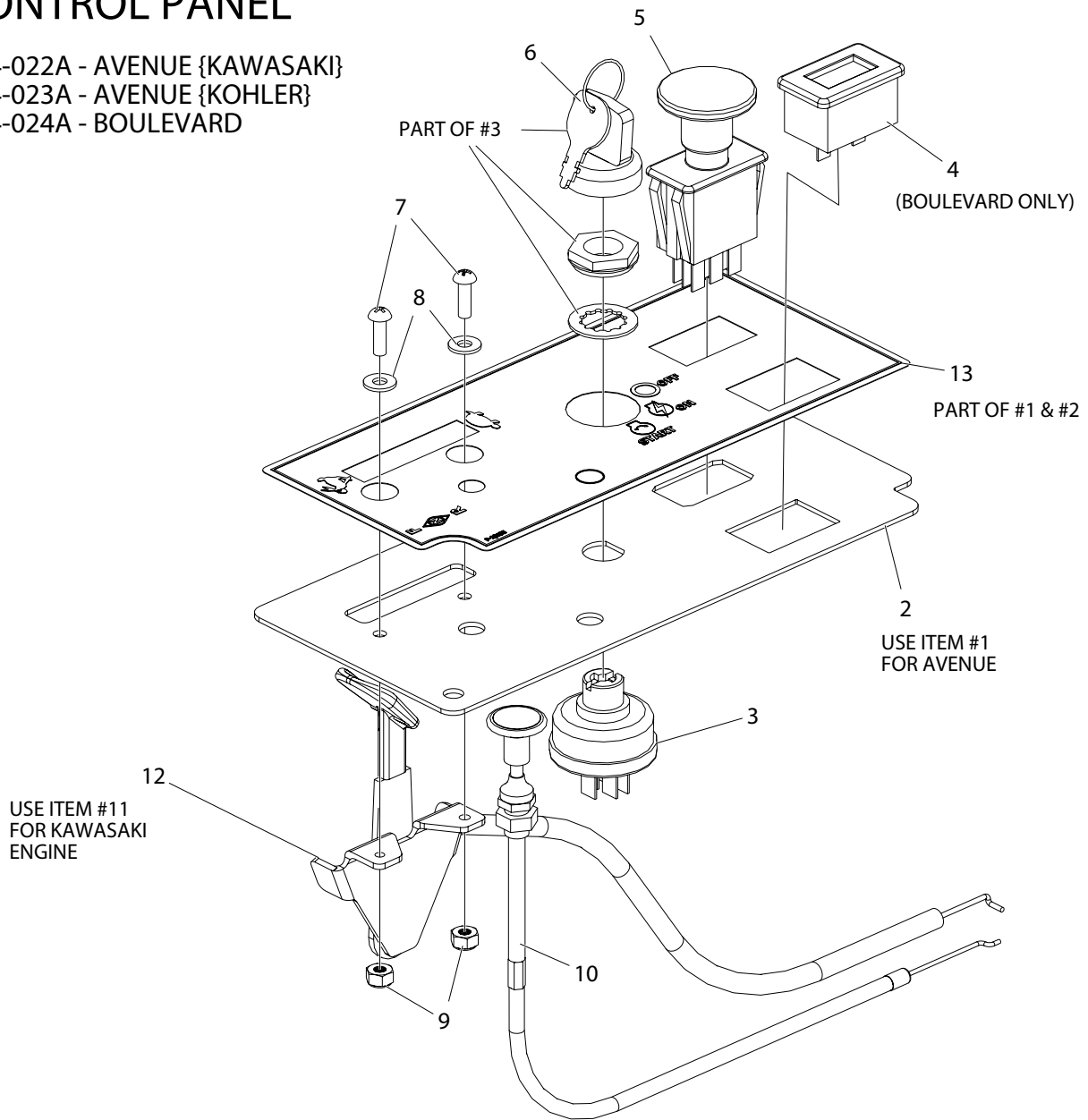


ITEM #	QTY	PART #	DESCRIPTION
1	1	714-074P	PIN, PIVOT, TWIN LEVER
2	1	714-266P	HOUSING, TWIN LEVER, R
3	1	714-269P	HOUSING, TWIN LEVER, L
4	1	721-006P	SPRING GUIDE, TS
5	1	721-088W	WLDT, TWIN LEVER PIVOT, R
6	1	721-089W	PIVOT WELDMENT FOR OVER-CENTER
7	1	721-090W	WLDT, HANDLE BASE
8	1	721-093P	PIN, SPRING OVER-CENTER
9	1	721-094P	SPRING GUIDE, TS OVER-CENTER
10	1	721-103P	PLT, TS HOUSING, R
11	1	721-104P	PLT, TS HOUSING, L
12	2	D-3730	BUSHING, DU 5/8 DIA X 1/2 LG
13	1	E-6297	BRAKE SWITCH
14	1	F-1011-02	NUT, HEX 5/16-18
15	2	F-1022-26	MACHINE SCREW,RND, 10-32 X 5/8, SLOTTED, CZ

ITEM #	QTY	PART #	DESCRIPTION
16	1	F-1125	NUT, CENTERLOCK, 5/16-18, YZ, GR5
17	1	F-1306	HHCS, 3/8-16 X 1-1/2", FULL THRD, CZ, GR5
18	2	F-1448	LOCKNUT, 10-32 NYLOC YELLOW PLTD
19	1	F-1486	NUT, JAM, 3/8-16, YZ
20	1	F-1903	SETScrew, 3/8-16 X 3/4" W/ NYLON
21	5	F-2063	NUT, 5/16-18, NYLOC, FLANGED, YZ
22	2	F-2120	FHCS, 5/16-18 X 3/4", YZ, GR5
23	1	F-2122	FHCS, 5/16-18 X 1-1/4", YZ, GR5, FULL THD
24	1	F-2145	HHCS, 5/16-18 X 6", YZ, GR8
25	1	F-2151	NUT, 3/8-16 NYLOC, FLANGED, YZ
26	1	F-2160	FHCS, 3/8-16 X 4-1/2", YZ, GR5
27	2	H-3009	BUSHING, 0.313, NYLON, FLANGED
28	1	H-3079	SPRING, TS OVER CENTER

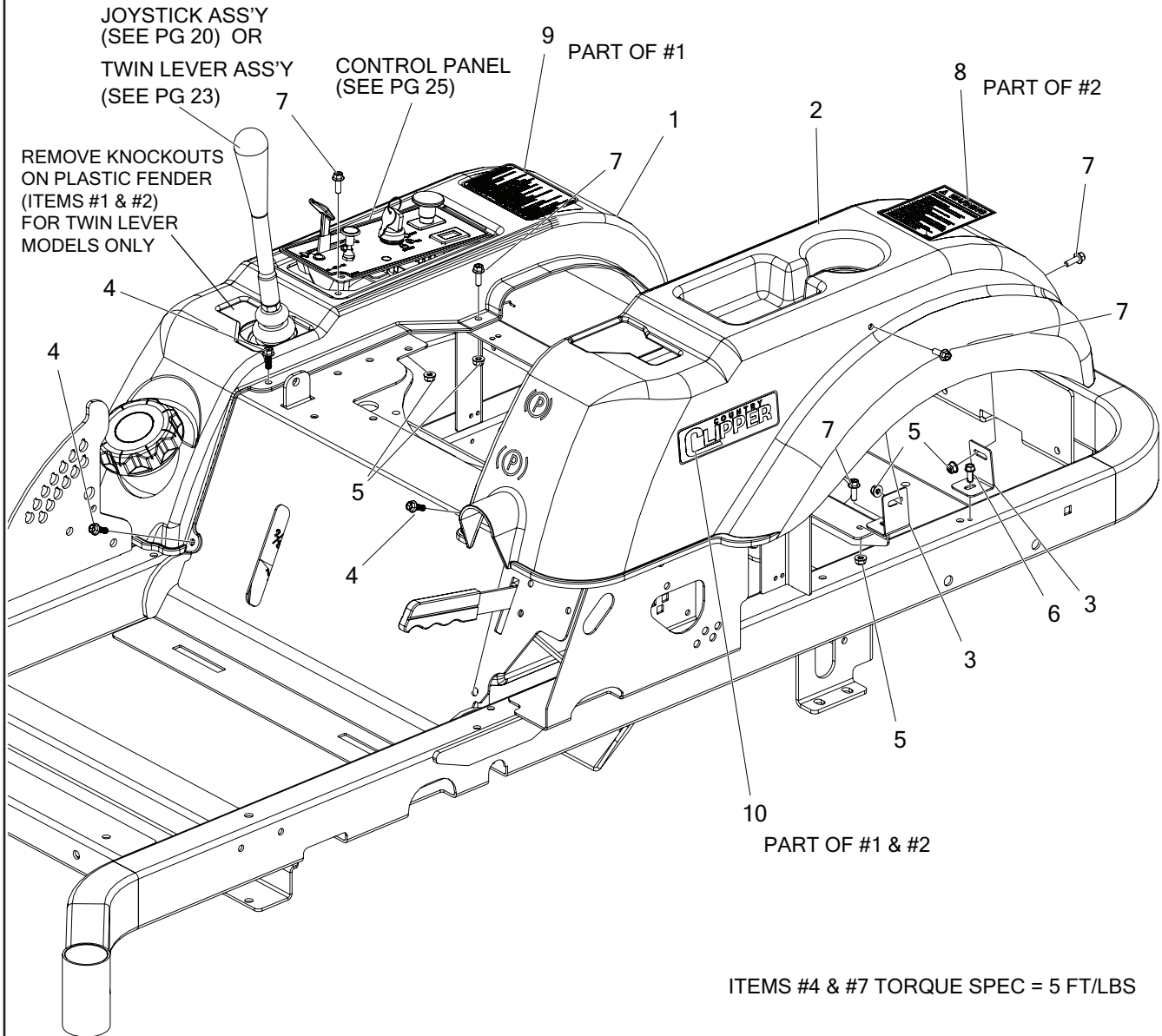
# CONTROL PANEL

714-022A - AVENUE {KAWASAKI}  
 714-023A - AVENUE {KOHLER}  
 714-024A - BOULEVARD



ITEM #	QTY	PART #	DESCRIPTION
1	1	714-027A	CONTROL PLATE W/ DECAL, AVENUE
2	1	714-031A	CONTROL PLATE W/ DECAL, BOULEVARD
3	1	E-5873	KEY ASSEMBLY, 3 POSITION
4	1	E-5878	HOUR METER
5	1	E-6403	PTO SWITCH
6	1	E-6445	KEY SET OF TWO
7	2	F-1022-26	MACHINE SCREW,RND, 10-32 X 5/8, SLOTTED, CZ
8	2	F-1071	WASHER, FLAT #10, ZINC PLATED #10 SAE FLAT WASHER
9	2	F-1448	LOCKNUT, 10-32 NYLOC YELLOW PLTD
10	1	H-2287	CHOKE CABLE, 43-1/2"
11	1	H-2610	THROTTLE CABLE, 38"
12	1	H-2611	THROTTLE CABLE, 57"
13	1	P-13195	DECAL, CONTROL PANEL, AVE & BLVD

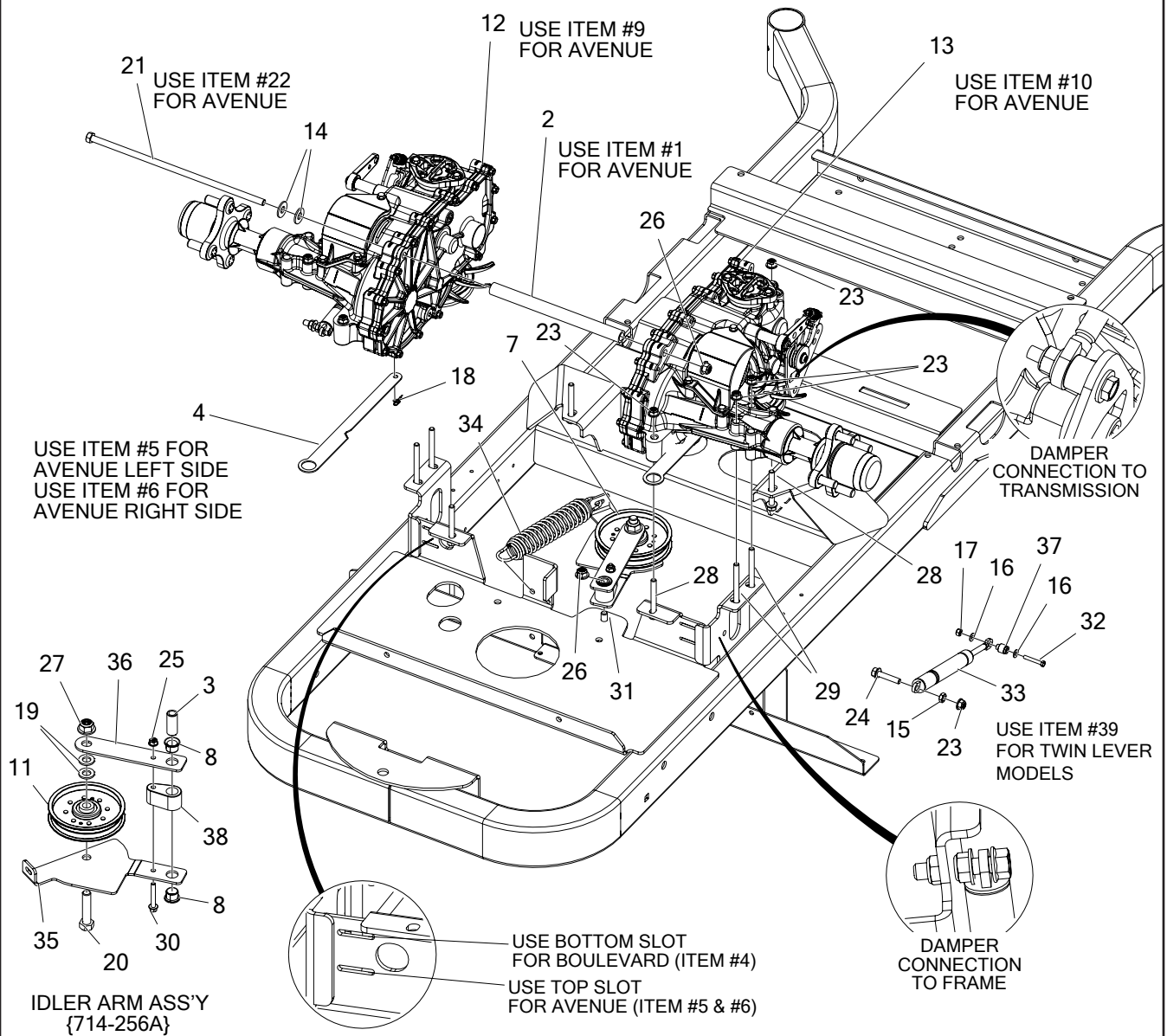
# FENDER ASSEMBLY & RELATED PARTS



ITEM #	QTY	PART #	DESCRIPTION
1	1	714-037A	FENDER, RH W/ DECAL
2	1	714-038A	FENDER, LH W/ DECAL
3	4	714-323P	TAB, FENDER MOUNT
4	4	F-2119	FHCS, 1/4-20 X 3/4", YZ, GR5, LOCK PATCH
5	9	F-2132	NUT, 1/4-20 NYLOC, FLANGED, Y
6	2	F-2134	HFCS, 1/4-20 X 0.625", YZ, SELF TAPPING
7	9	F-2162	FHCS, 1/4-20 X 3/4", YZ, GR5
8	1	P-11370	DECAL, WARNING
9	1	P-13188	DECAL, INSTRUCTIONS
10	2	P-13366	DECAL, C/C LOGO, SM, VINYL

# TRANSMISSION ASSEMBLY & RELATED PARTS

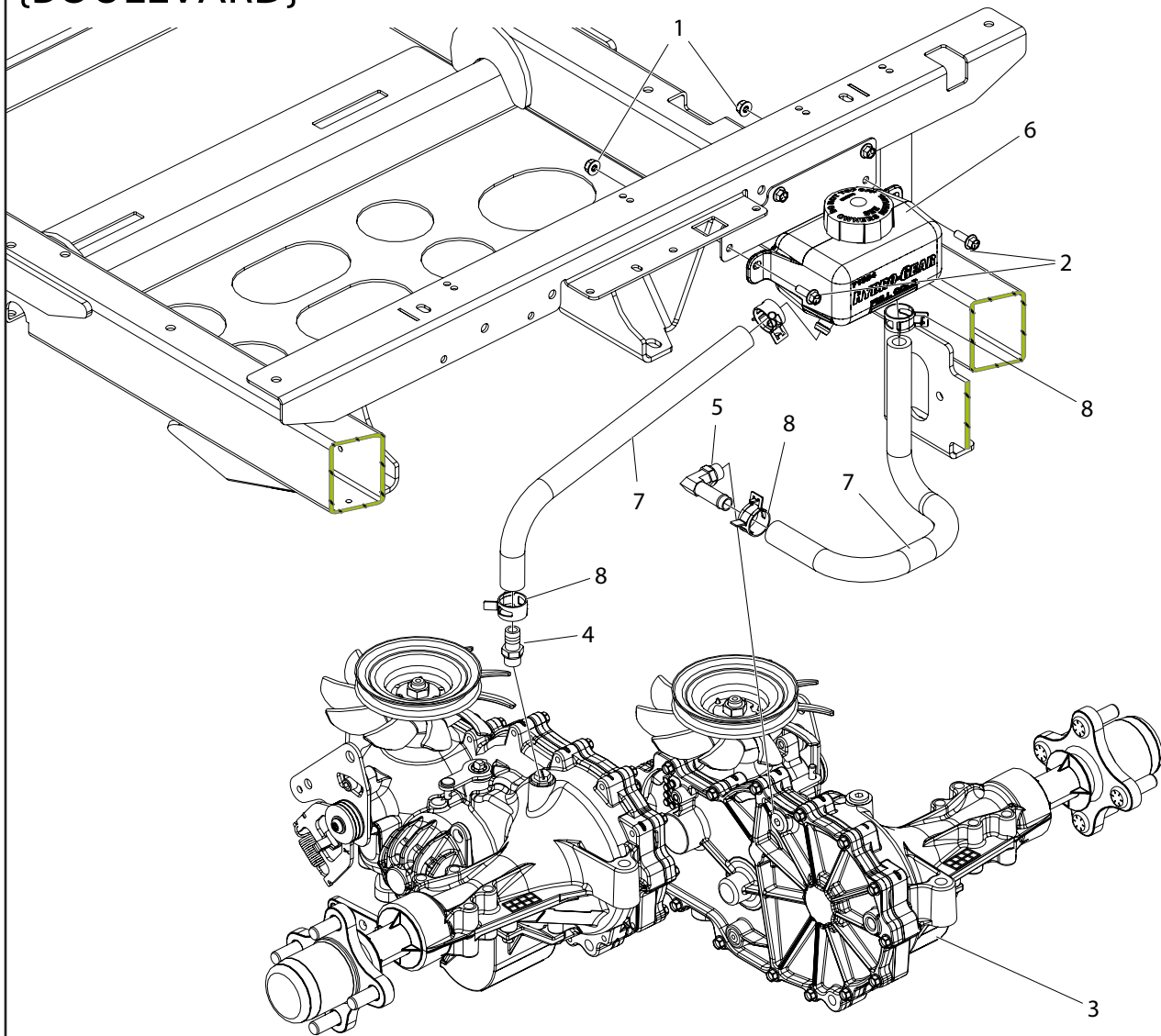
(LOOKING AT BOTTOM)



ITEM #	QTY	PART #	DESCRIPTION
1	1	659-120P	HYDRO BRACE
2	1	659-173P	HYDRO BRACE (BOULEVARD)
3	1	714-058P	PIN, IDLER PIVOT
4	2	714-098P	TAB, DUMP VALVE (BOULEVARD)
5	1	714-168P	TAB, LCM DUMP VALVE, L
6	1	714-169P	TAB, LCM DUMP VALVE, R
7	1	714-256A	ASSY, IDLER ARM
8	2	D-3730	BUSHING, DU 5/8 DIA X 1/2 LG
9	1	D-3783-01	TRANSAXLE, EZT, RH
10	1	D-3783-02	TRANSAXLE, EZT, LH
11	1	D-3924	PULLEY, FLAT IDLER, 4.25 OD, NTN, DBL INSERT
12	1	D-3954-01	TRANSAXLE, ZT-2800 w/RTN, RH (BOULEVARD)
13	1	D-3954-02	TRANSAXLE, ZT-2800 w/RTN, LH (BOULEVARD)
14	2	F-1009-03	WASHER, FLAT, 3/8, YZ
15	2	F-1011-02	NUT, HEX 5/16-18
16	4	F-1071	WASHER, FLAT #10, ZINC PLATED
17	2	F-1448	LOCKNUT, 10-32 NYLOC YELLOW PLTD
18	2	F-1492	RUE RING, 5/16
19	2	F-1521	WASHER, 1/2" CUSTOM, YZ
20	1	F-1664	HHCS, 1/2-13 X 2-1/4", YZ, GR5

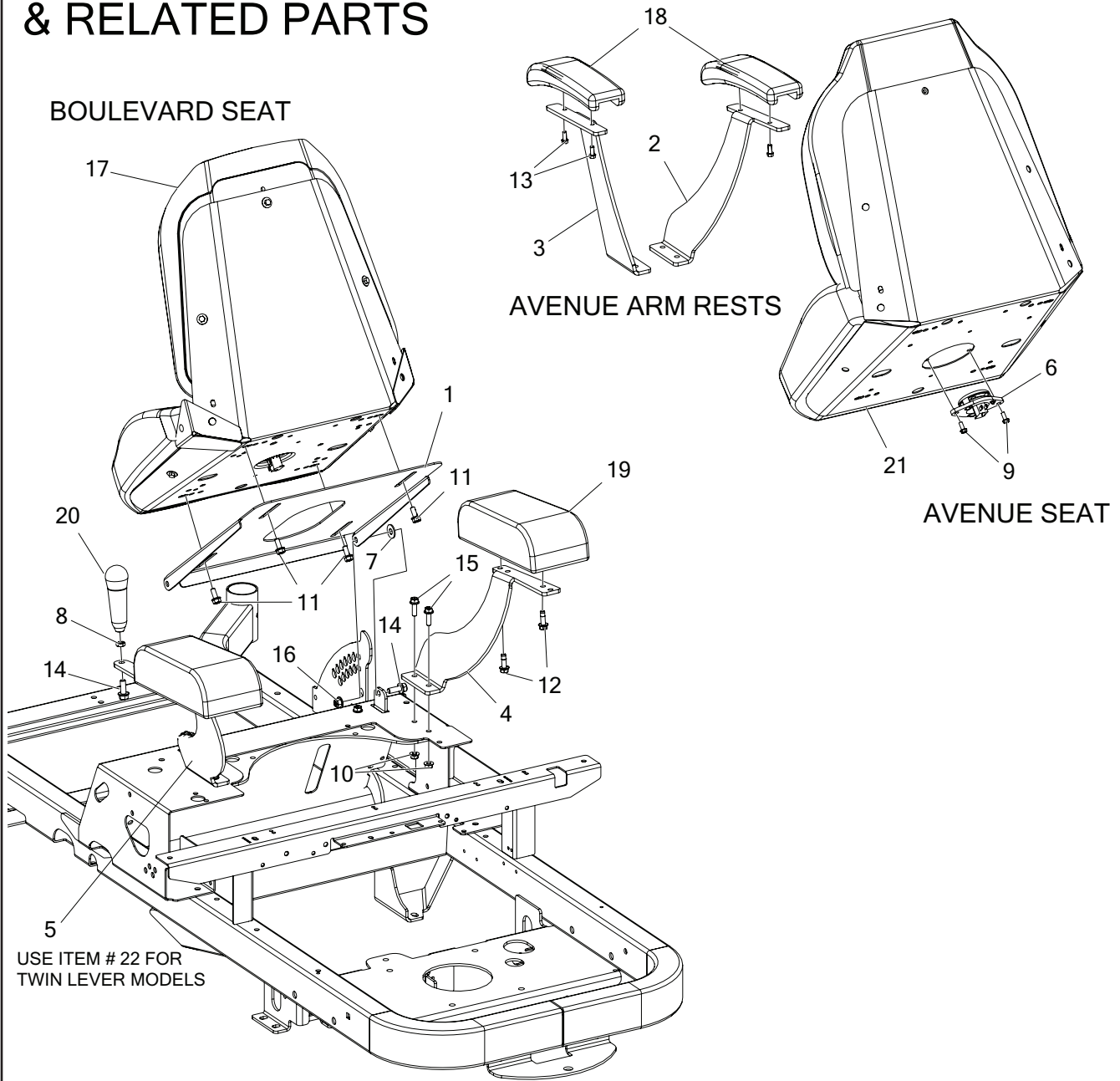
ITEM #	QTY	PART #	DESCRIPTION
21	1	F-2007	HHCS, 3/8-16 X 12", YZ, GR8 (BOULEVARD)
22	1	F-2048	HHCS, 3/8-16 X 12", YZ, GR5
23	10	F-2063	NUT, 5/16-18, NYLOC, FLANGED, YZ
24	2	F-2129	FHCS, 5/16-18 X 1-1/2", YZ, GR5
25	1	F-2132	NUT, 1/4-20 NYLOC, FLANGED, YZ
26	2	F-2151	NUT, 3/8-16 NYLOC, FLANGED, YZ
27	1	F-2152	NUT, 1/2-13 NYLOC, FLANGED, YZ
28	4	F-2177	FHCS, 5/16-18 X 2-1/2, YZ, GR5
29	4	F-2178	FHCS, 5/16-18 X 3", YZ, GR5
30	1	F-2216	FHCS, 1/4-20 X 1-3/4, YZ, GR5
31	1	F-2218	FHCS, 3/8-16 X 2-1/4", YZ, GR5
32	2	F-2221	HHMS, 10-32 X 1-1/4"
33	2	H-2896	DAMPER-300 N-AVM
34	1	H-2907	SPRING, 5.43 X 1-1/2", TAPERED ENDS
35	1	H-2942	PLT, IDLER ARM, TOP
36	1	H-2943	PLT, IDLER ARM, BOTTOM
37	2	H-2961	BUSHING, DAMPLER MOUNT
38	1	H-2962	SPACER, IDLER
39	2	H-2958	DAMPER-NC 600

# TRANSMISSION ASSEMBLY & RELATED PARTS CON'T {BOULEVARD}



ITEM #	QTY	PART #	DESCRIPTION
1	2	F-2132	NUT, 1/4-20 NYLOC, FLANGED, YZ
2	2	F-2162	FHCS, 1/4-20 X 3/4", YZ, GR5
3	2	H-2567	TRANSAXLE OIL FILTER
4	1	H-2517	VENT TUBE ADAPTER
5	1	H-2762	VENT TUBE ADAPTER
6	1	H-3033	HYDRO TANK ASSEMBLY
7	2	H-3084	HOSE, 1/2" DIA X 16-1/2" 300 PSI W.P.
8	4	H-3089	HOSE CLAMP, 7/8"

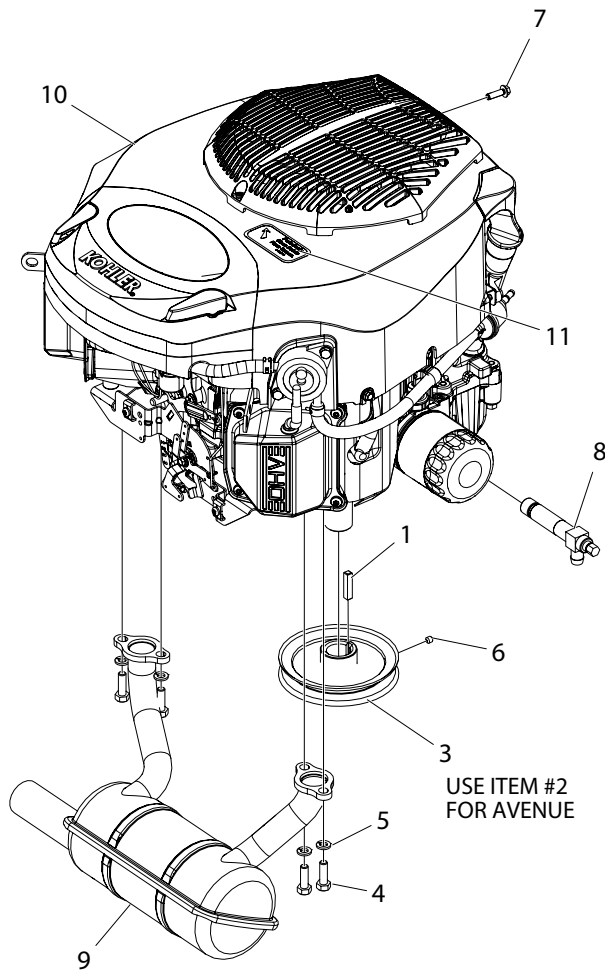
# SEAT BASE & RELATED PARTS



ITEM #	QTY	PART #	DESCRIPTION
1	1	714-026P	PAN, SEAT MOUNT
2	1	714-431P	PLT, ARM REST MOUNT, AVE, R
3	1	714-432P	PLT, ARM REST MOUNT, AVE, L
4	1	720-017P	MOUNT PLATE, ARM REST, R
5	1	720-071P	PLT, ARM REST, LH, JS
6	1	E-6374	SEAT SWITCH, NC
7	2	F-1009-03	WASHER, FLAT, 3/8, YZ
8	1	F-1486	NUT, JAM, 3/8-16, YZ
9	2	F-1785	SCREW, HX WASHER HD #14X3/4, CZ
10	4	F-2063	NUT, 5/16-18, NYLOC, FLANGED, YZ
11	4	F-2120	FHCS, 5/16-18 X 3/4", YZ, GR5

ITEM #	QTY	PART #	DESCRIPTION
12	4	F-2121	FHCS, 5/16-18 X 1", LOCK PATCH, YZ, GR5
13	4	F-2134	HFCS, 1/4-20 X 0.625", YZ, SELF TAPPING
14	3	F-2141	FHCS, 3/8-16 X 1", YZ, GR5
15	4	F-2148	FHCS, 5/16-18 X 1", YZ, GR5
16	2	F-2151	NUT, 3/8-16 NYLOC, FLANGED, YZ
17	1	H-2604	SEAT ASS'Y w/N.C. SWITCH
18	2	H-2753	PAD, ARM REST, MOLDED
19	2	H-2763	PAD, ARM REST, SEAT KING
20	1	H-2764	HANDLE, JOYSTICK
21	1	H-2974	SEAT, MILSCO
22	1	720-018P	PLT, ARM REST, LH, TS

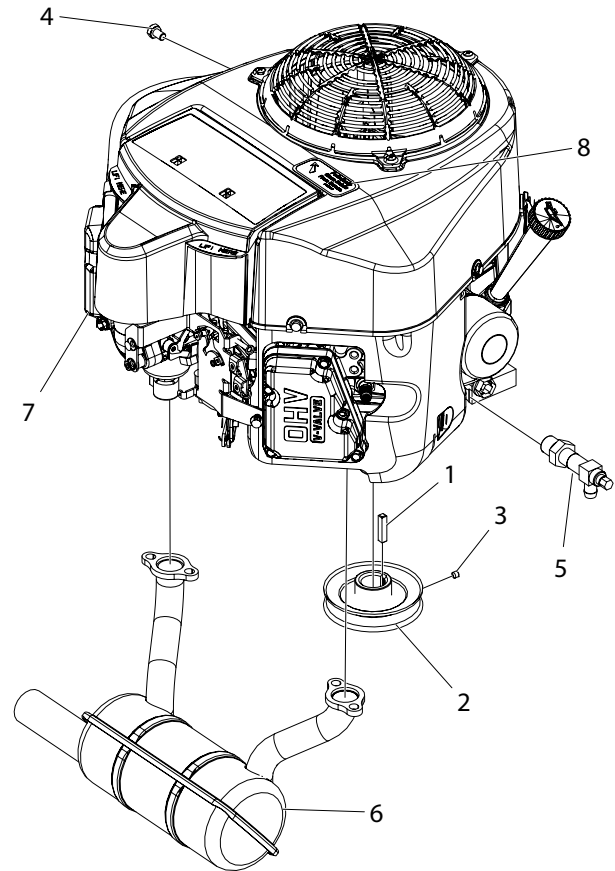
# ENGINES



## KOHLER 23HP KT730

(USE THROTTLE CABLE H-2611  
& CHOKE CABLE H-2287)

ITEM #	QTY	PART #	DESCRIPTION
1	1	621-113P	SQUARE KEY 1/4 X 1/4 X 1-1/4
2	1	D-3929	PULLEY, MOTOR, O.D. 3.8"
3	1	D-3935	PULLEY, MOTOR, O.D. 4.731 BORE
4	4	F-1015-15	HHCS, 5/16-18 X 1", YZ, GR5
5	4	F-1019-02	LOCKWASHER
6	1	F-1228	SET SCREW, SOCKET, 1/4-20 X 1/4", W/NYLOC
7	1	F-2049	M6-1 X 20 H.F. FORM SCREW
8	1	H-2589	OIL DRAIN VALVE (KOHLER)
9	1	H-2888	MUFFLER, KOHLER, COMPACT
10	1	M-5406	ENGINE, KOHLER, 23HP KT730, 3400RPM
11	1	P-10077-11	DECAL, "PERIODIACALLY CLEAN"



## KAWASAKI 18HP FR600V

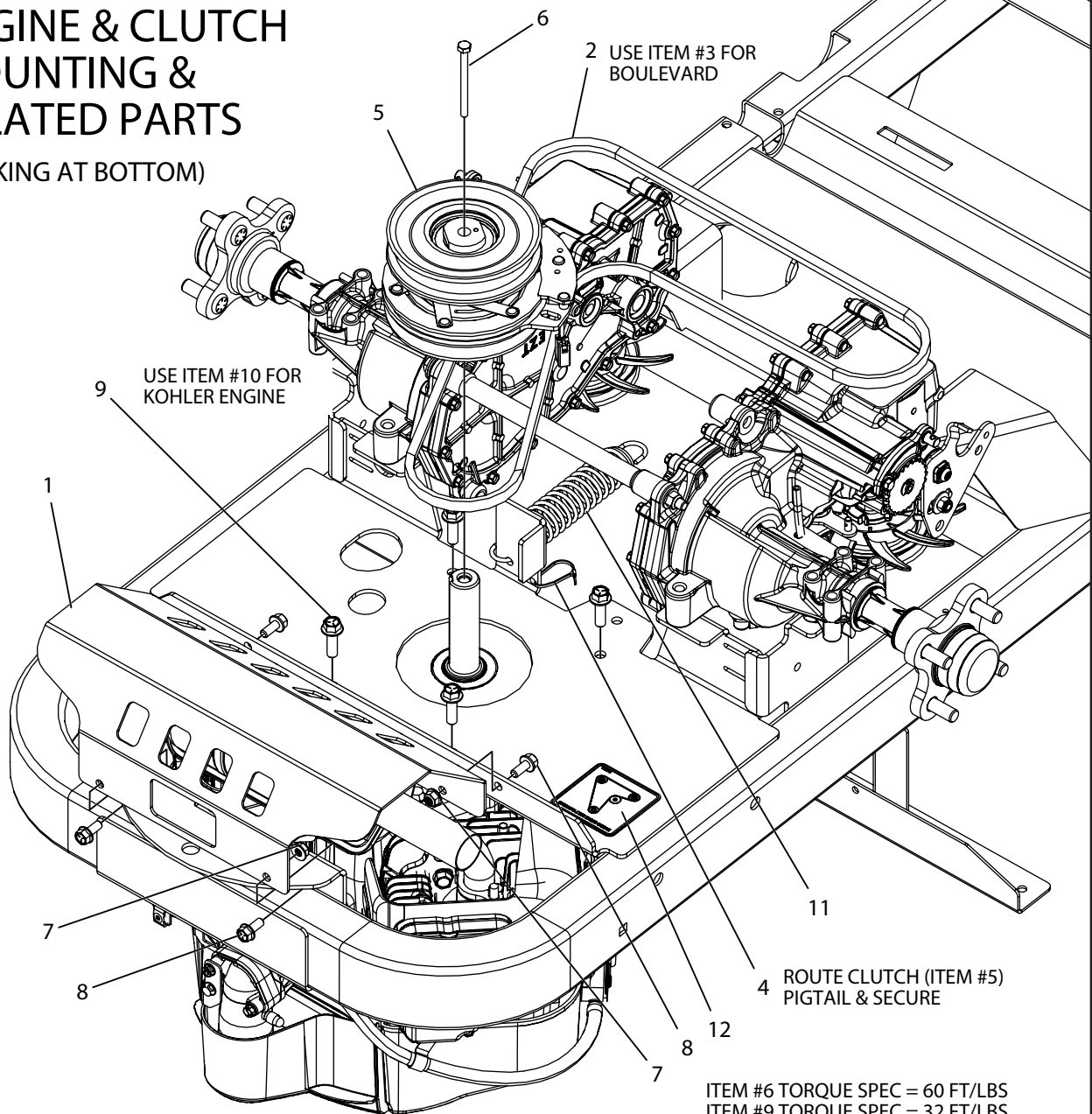
(USE THROTTLE CABLE H-2610  
& CHOKE CABLE H-2287)

ITEM #	QTY	PART #	DESCRIPTION
1	1	621-113P	SQUARE KEY 1/4 X 1/4 X 1-1/4
2	1	D-3929	PULLEY, MOTOR, O.D. 3.8"
3	1	F-1228	SET SCREW, SOCKET, 1/4-20 X 1/4", W/NYLOC
4	1	F-2243	HHCS, M8-1.25 X 12, YZ, GR8
5	1	H-2590	OIL DRAIN VALVE (KAWASAKI)
6	1	H-2906	MUFFLER, COMPACT, KAWASAKI, FR600
7	1	M-5402	ENGINE, KAWASAKI 18HP, FR600V
8	1	P-10077-11	DECAL, "PERIODIACALLY CLEAN"



# ENGINE & CLUTCH MOUNTING & RELATED PARTS

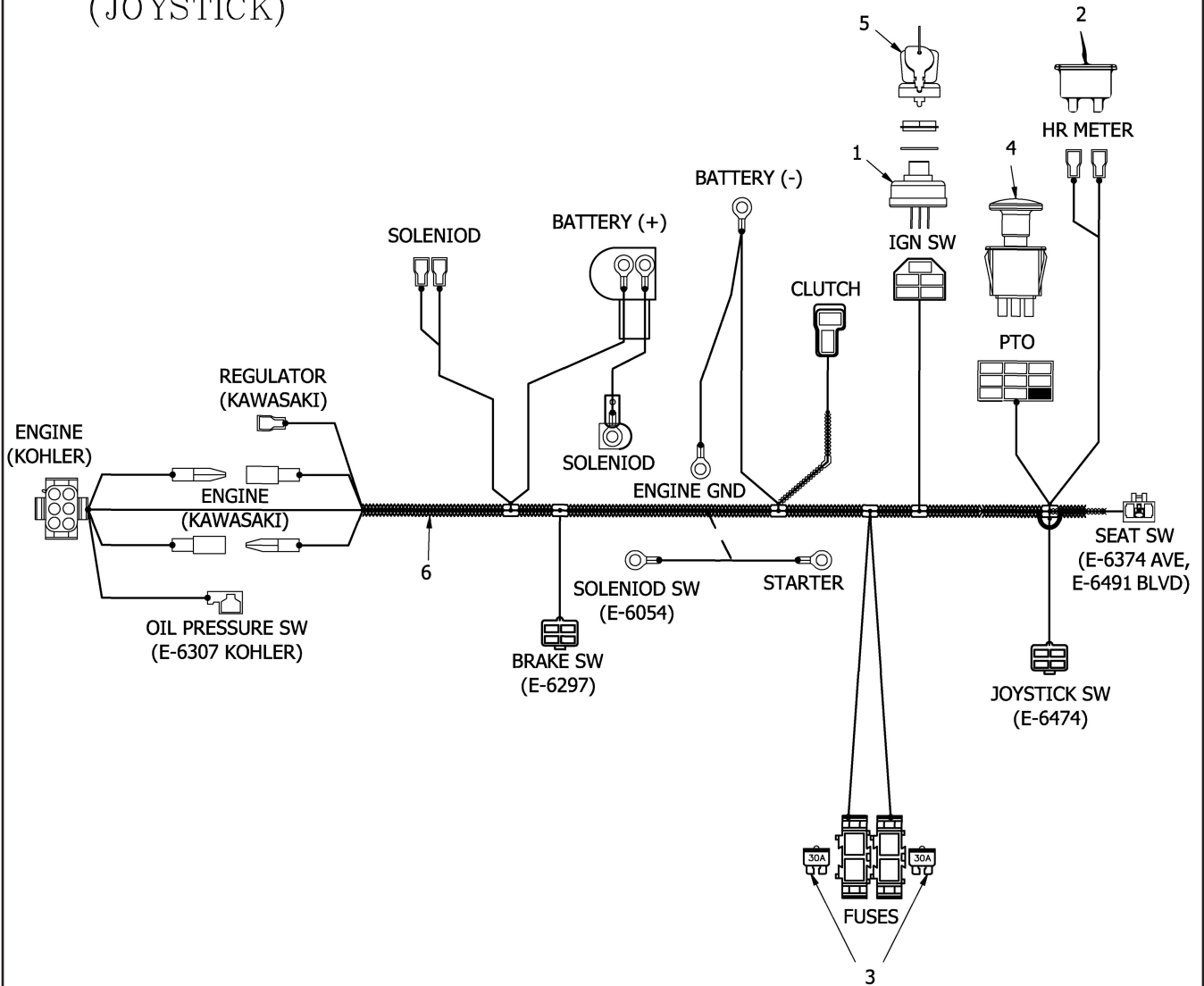
(LOOKING AT BOTTOM)



ITEM #6 TORQUE SPEC = 60 FT/LBS  
ITEM #9 TORQUE SPEC = 32 FT/LBS  
ITEM #10 TORQUE SPEC = 42 FT/LB

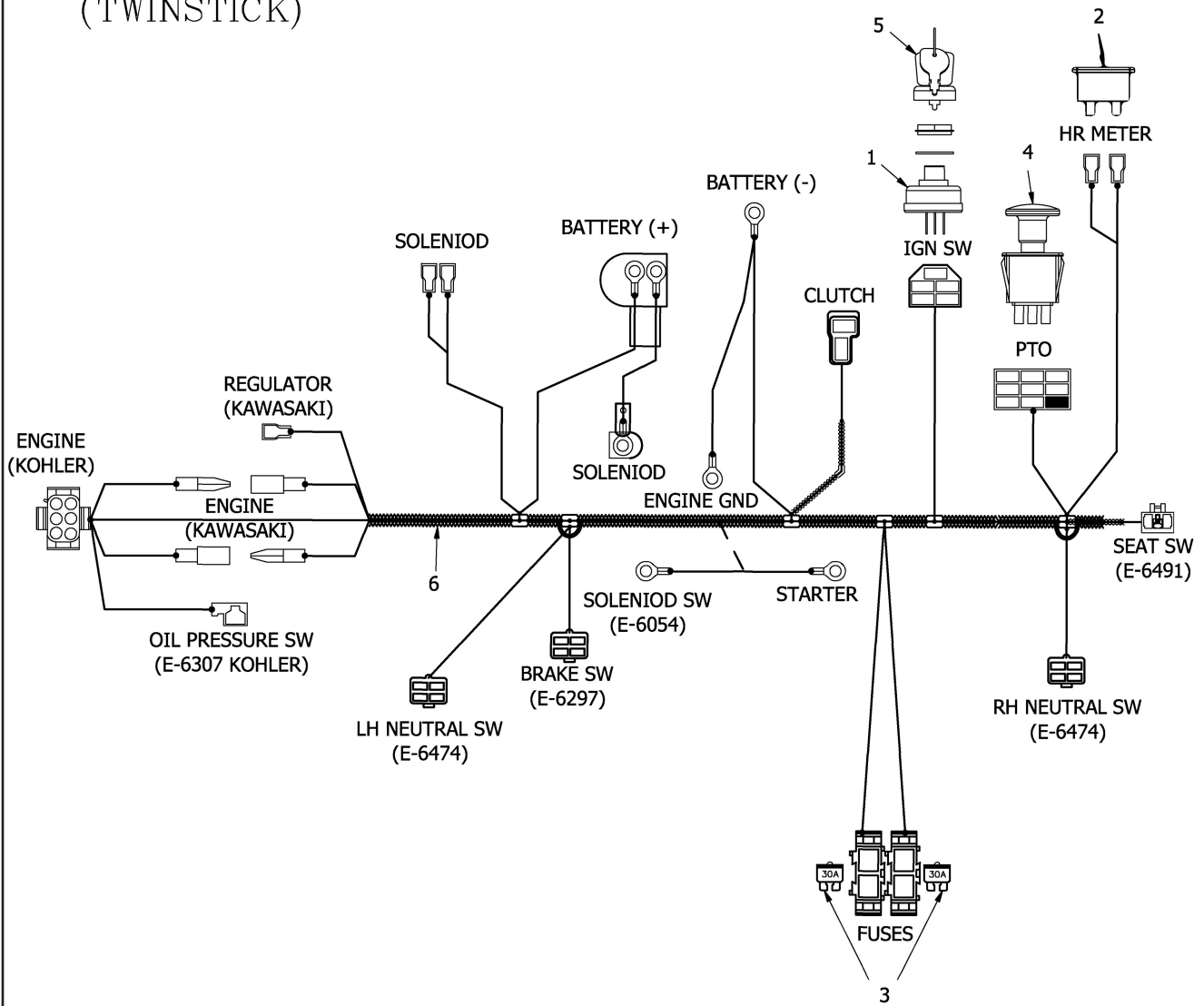
ITEM #	QTY	PART #	DESCRIPTION
1	1	714-398P	GUARD, MUFFLER
2	1	D-3885	V-BELT, AP64 RAW EDGE LAMINATED
3	1	D-3891	V-BELT, AP65 RAW EDGE LAMINATED
4	1	E-5842	WIRE TIE
5	1	E-6613	MS CLUTCH, 1" BORE, 125FT-LB, 4.4 A DIA, EXT PULLEY, #5219-187
6	1	F-1766	HHCS, 1/4-20 X 3-1/4", YZ, GR5
7	4	F-2063	NUT, 5/16-18, NYLOC, FLANGED, YZ
8	4	F-2120	FHCS, 5/16-18 X 3/4", YZ, GR5
9	4	F-2125	FHCS, 3/8-16 X 1-1/4", YZ, GR5
10	4	F-2238	HFCS, 3/8-16 X 1-1/4", CZ, THD FORMING
11	1	H-2907	SPRING, 5.43 X 1-1/2", TAPERED ENDS
12	1	P-12918	DECAL, HYDRO BELT ROUTING

# WIRE HARNESS & RELATED PARTS (JOYSTICK)



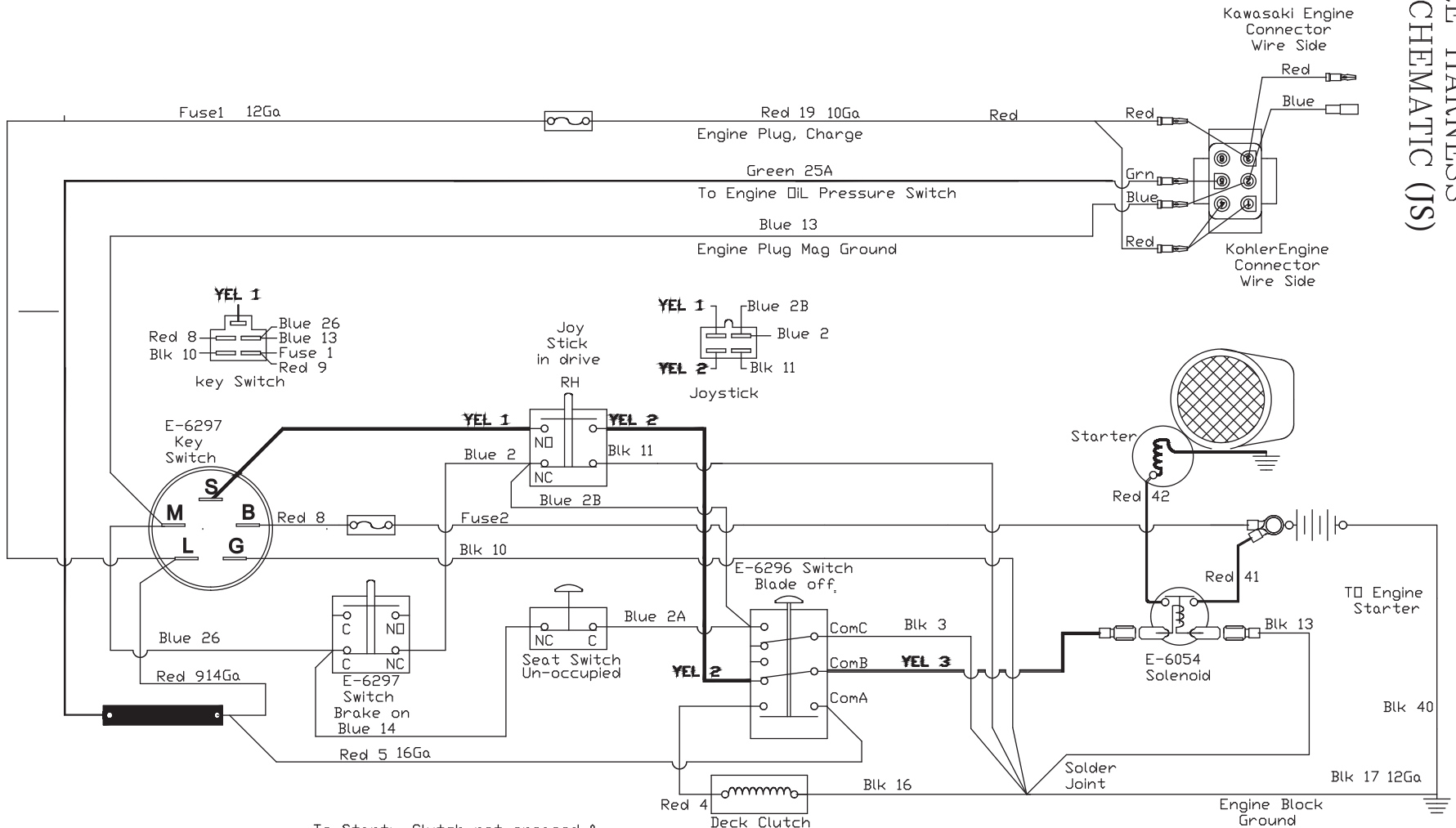
ITEM #	PART #	DESCRIPTION
1	E-5873	KEY SWITCH (INCLUDES #5)
2	E-5878	HOUR METER
3	E-6207	FUSE, #ATC-30
4	E-6403	PTO SWITCH
5	E-6445	KEY SET (INCLUDED IN #1)
6	E-6600	WIRE HARNESS, JS

# WIRE HARNESS & RELATED PARTS (TWINSTICK)



ITEM #	PART #	DESCRIPTION
1	E-5873	KEY SWITCH (INCLUDES #5)
2	E-5878	HOUR METER
3	E-6207	FUSE, #ATC-30
4	E-6403	PTO SWITCH
5	E-6445	KEY SET (INCLUDED IN #1)
6	E-6649	WIRE HARNESS, TS

# WIRE HARNNESS SCHEMATIC (S)

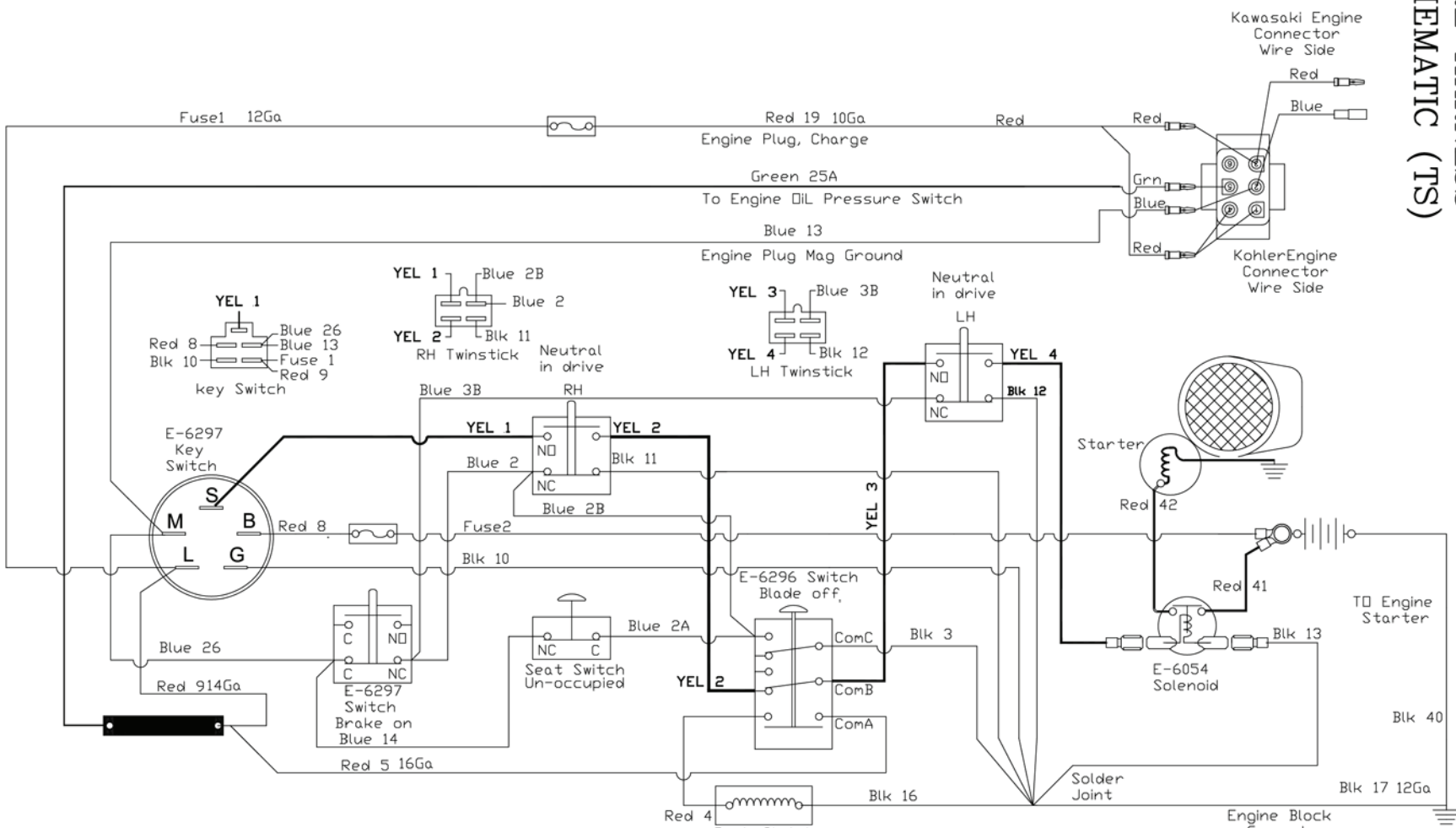


POSITION	CIRCUIT "MAKE"
1. OFF	G + M
2. RUN	B + L
3. START	B + L + S

To Start: Clutch not engaged & Steering Levers in Neutral  
 Engine Kill: If Steering Levers in drive & brake is on or seat un-occupied  
 If Clutch is on and seat is not occupied

Start Circuit Yellow  
 Safety Circuit Blue  
 Power Circuit Red  
 Ground Circuit Black  
 Hr Mtr Circuit Green

# WIRE HARNESS SCHEMATIC (TS)



POSITION	CIRCUIT "MAKE"
1. OFF	G + M
2. RUN	B + L
3. START	B + L + S

To Start: Clutch not engaged & Steering Levers in Neutral  
 Engine Kill: If Steering levers in drive & brake is on or seat un-occupied  
 If Clutch is on and seat is not occupied

Start Circuit Yellow  
 Safety Circuit Blue  
 Power Circuit Red  
 Ground Circuit Black  
 Hr Mtr Circuit Green





# Repair Parts Manual



**Country Clipper Division**  
Shivvers Manufacturing Inc.  
613 W. English St.  
Corydon, IA 50060-0467  
Ph. 641-872-2544  
Fax 641-872-1593