

Repair Parts Manual

COUNTRY CLIPPER ZERO TURN MOWER

AVENUE A105

BOULEVARD B205

COUNTRY CLIPPER

AVENUE-A105 & BOULEVARD-B205

ZERO TURN RADIUS MOWER

TABLE OF CONTENTS

SECTION 1 – MOWER DECKS AND RELATED PARTS

1. 42" DECK ASSEMBLY
2. 48" DECK ASSEMBLY
3. 54" DECK ASSEMBLY
4. 60" DECK ASSEMBLY
5. DISCHARGE CHUTE ASSEMBLY
6. DECK SPINDLE ASSEMBLY
7. DOUBLE IDLER & RELATED PARTS (42" DECK)
8. DOUBLE IDLER & RELATED PARTS (48", 54" & 60" DECK)
9. BELT TENSION LEVER
10. FIXED IDLERS & RELATED PARTS
11. LIFT HANDLE ASSEMBLY & RELATED PARTS
12. DECK SCISSOR & RELATED PARTS

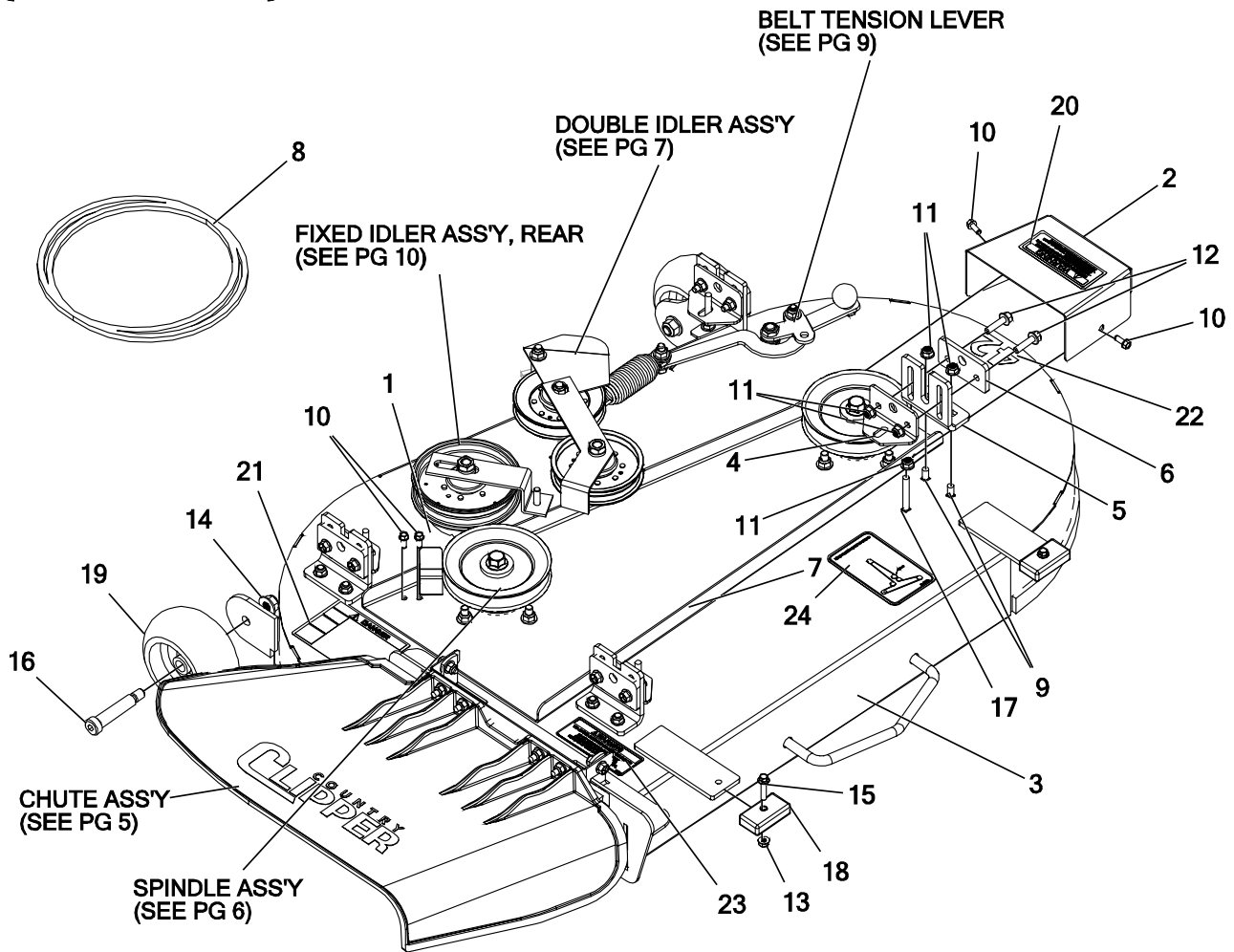
SECTION 2 – TRACTOR FRAME AND RELATED PARTS

13. FOOT DECK & TIRES (AVENUE)
14. FOOT DECK & TIRES (BOULEVARD)
15. FRONT PANEL ASSEMBLY & RELATED PARTS
16. FRONT PANEL ASSEMBLY & RELATED PARTS (CONT)
17. BATTERY BOX
18. BRAKE ASSEMBLY

SECTION 3 – TRACTOR DRIVE AND RELATED PARTS

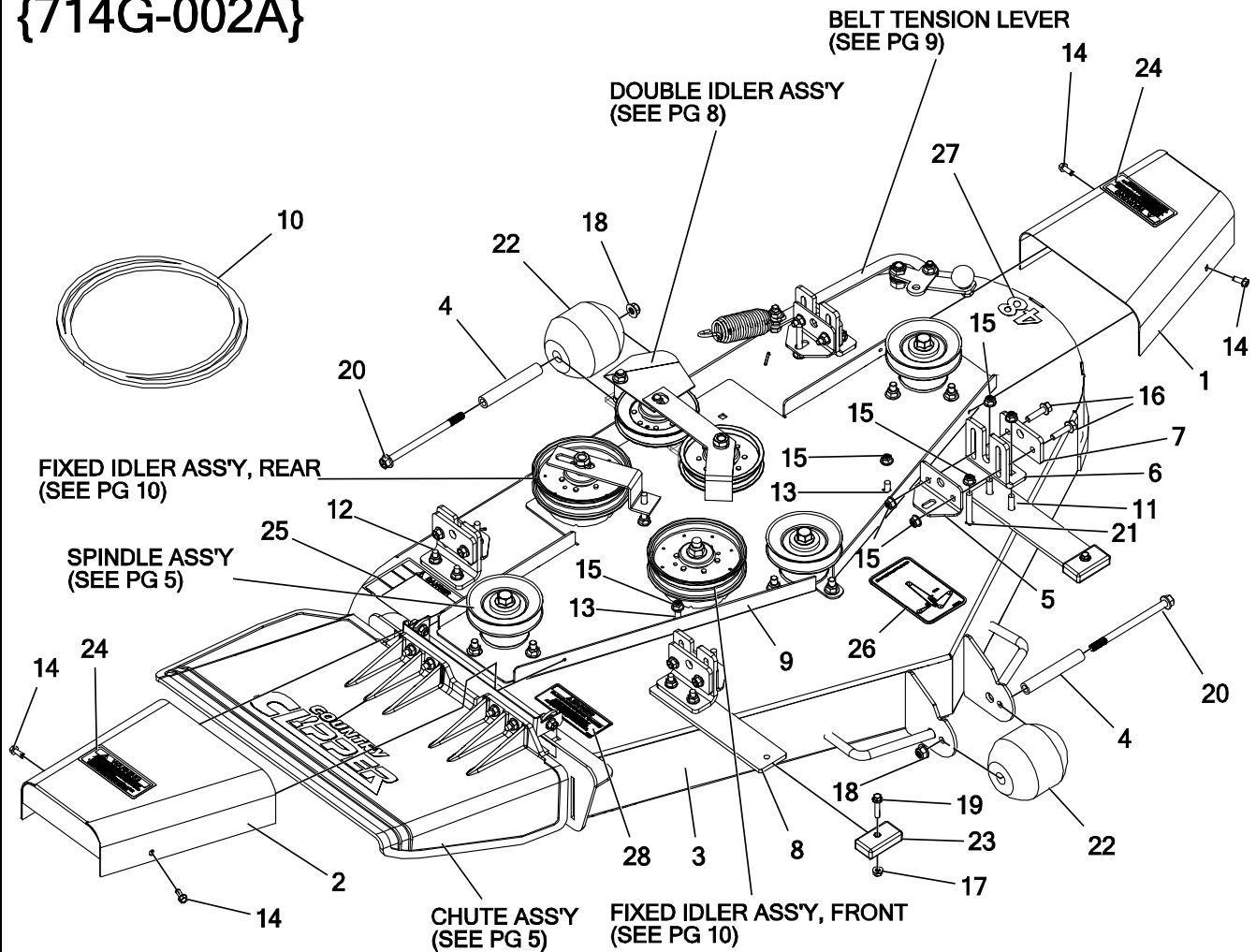
19. FUEL TANK ASSEMBLY
20. JOYSTICK CONTROL & RELATED PARTS
21. JOYSTICK ASSEMBLY
22. JOYSTICK ASSEMBLY MOUNTING & RELATED PARTS
23. CONTROL PANEL
24. FENDER ASSEMBLY & RELATED PARTS
25. TRANSMISSION ASSEMBLY & RELATED PARTS (AVENUE & BOULEVARD)
26. TRANSMISSION ASSEMBLY & RELATED PARTS (BOULEVARD)
27. SEAT BASE & RELATED PARTS (AVENUE)
28. SEAT BASE & RELATED PARTS (BOULEVARD)
29. ENGINE
30. ENGINE & CLUTCH MOUNTING & RELATED PARTS
31. WIRE HARNESS & RELATED PARTS
32. WIRE HARNESS SCHEMATIC

42" DECK ASSEMBLY {714F-002A}



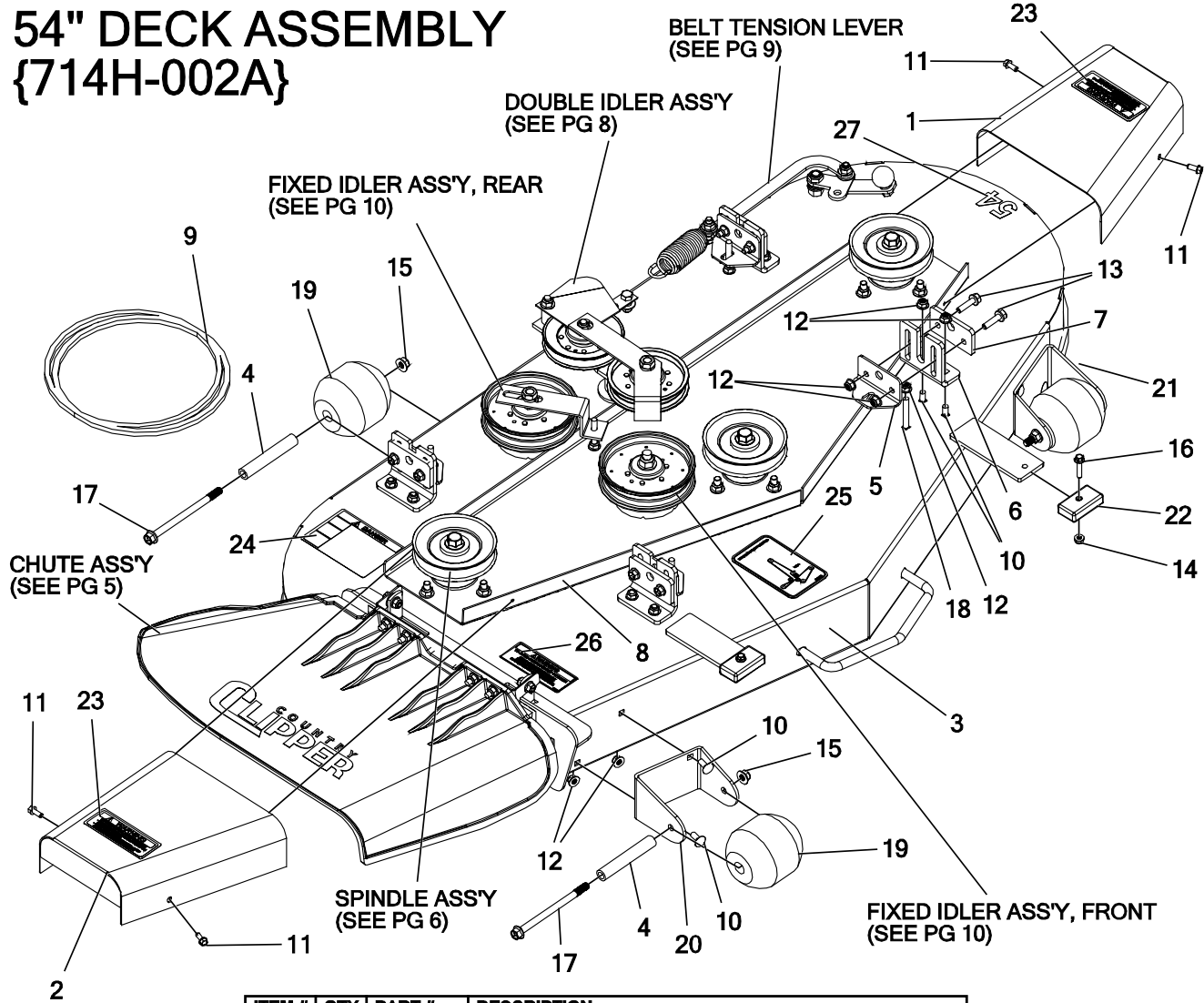
ITEM #	QTY	PART #	DESCRIPTION
1	1	700-058P	GUIDE, BELT
2	1	714-009A	42" PULLEY COVER W/ DECALS
3	1	714-052A	42" DECK W/ DECALS
4	4	714-179P	PLATE, ADJUSTMENT W/FLANGE
5	3	714-383P	DECK HANGER TAB
6	4	714-424P	PLT, CLAMP
7	1	714A-005P	DECK STIFFENER, 42"
8	1	D-3948	BELT, BANDO, B-122
9	6	F-1671	CARRIAGE BOLT, 5/16-18 X 3/4", YZ, GR5
10	4	F-2030	HEX, WASHER HEAD SCREW, 1/4 X 5/8", SELF-TAPPING, YZ
11	18	F-2063	NUT, 5/16-18, NYLOC, FLANGED, YZ
12	8	F-2122	FHCS, 5/16-18 X 1-1/4", YZ, GR5, FULL THD
13	2	F-2132	NUT, 1/4-20 NYLOC, FLANGED, YZ
14	2	F-2152	NUT, 1/2-13 NYLOC, FLANGED, YZ
15	2	F-2182	FHCS, 1/4-20 X 1-1/4", YZ, GR5
16	2	F-2232	SHCS, 5/8" X 2-1/2", CZ
17	4	F-2234	5/16-18 X 2 1/4" CARRIAGE BOLT, FULL THREAD
18	2	H-2959	WEAR PAD
19	2	H-2968	ANTI-SCALP WHEEL, 5" X 2-1/2"
20	1	P-10935	DECAL, "WARNING ROTATING DRIVE"
21	1	P-10941	DECAL "DANGER ROTATING BLADES"
22	1	P-11949	DECAL, DECK SIZE, 42
23	1	P-12706	WARNING DECAL, DISCHARGE CHUTE
24	1	P-12712	DECAL WRANGLER BELT ROUTING

48" DECK ASSEMBLY {714G-002A}



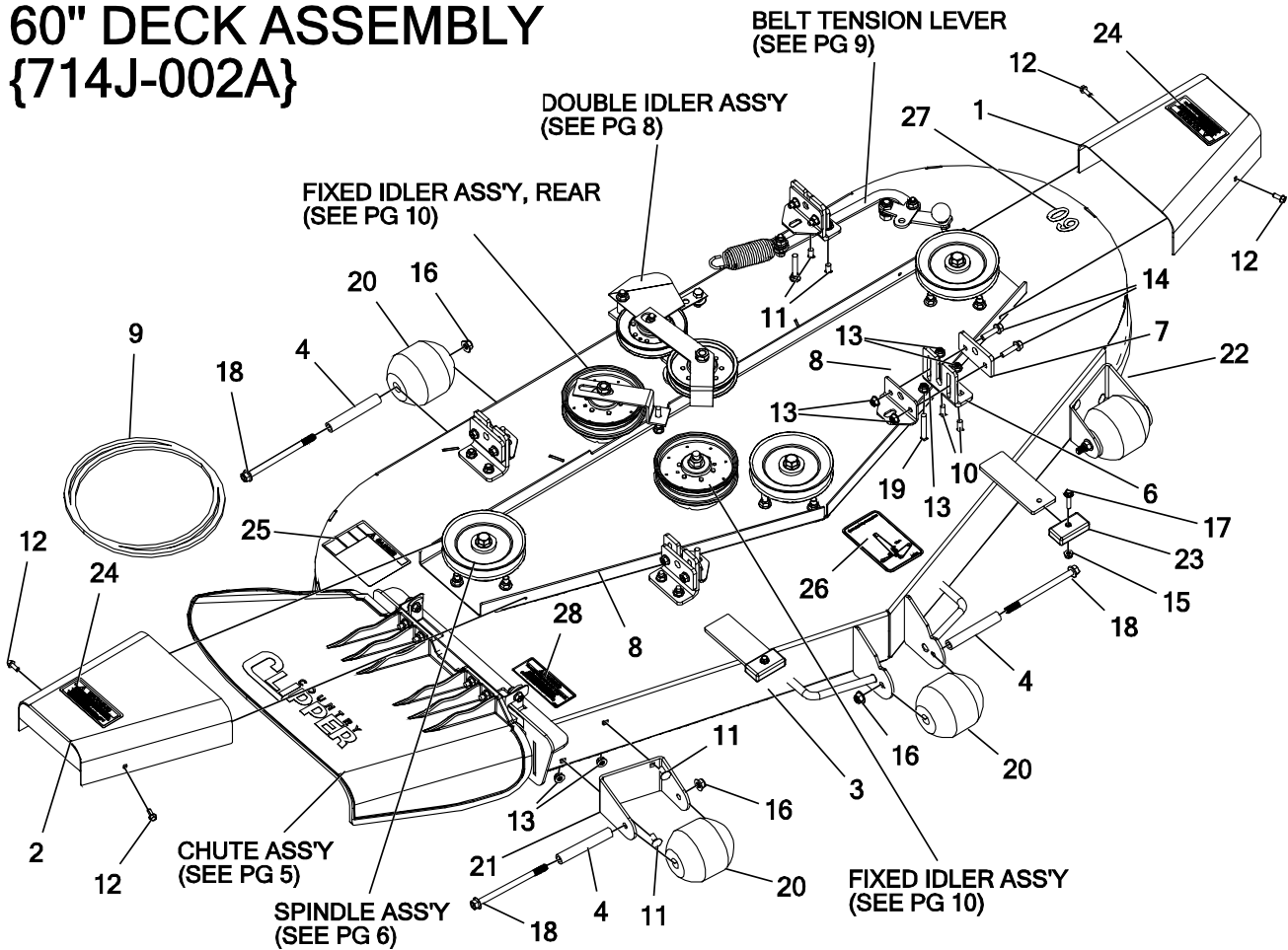
ITEM #	QTY	PART #	DESCRIPTION
1	1	714-018A	PULLEY COVER W/ DECALS, TRIM
2	1	714-019A	PULLEY COVER W/ DECALS, DISCHARGE
3	1	714-053A	48" DECK W/ DECALS
4	3	714-133P	BUSHING, ROLLER BRACKET
5	4	714-179P	PLATE, ADJUSTMENT W/FLANGE
6	4	714-383P	DECK HANGER TAB
7	4	714-424P	PLT, CLAMP
8	2	714-428P	PLT, DECK STOP
9	1	714B-005P	DECK STIFFENER, 48"
10	1	D-3949	BANDL BELT B-144
11	4	F-1106	BOLT, CARRIAGE 5/16-18X1-1/4G5 5/16-18 X 1-1/4", GRADE 5/ZINC PLATED
12	4	F-1269	BOLT, CARRIAGE 5/16-18 X 1", YZ, GR5
13	2	F-1671	CARRIAGE BOLT, 5/16-18 X 3/4", YZ, GR5
14	4	F-2030	HEX, WASHER HEAD SCREW, 1/4 X 5/8", SELF-TAPPING, YZ
15	22	F-2063	NUT, 5/16-18, NYLOC, FLANGED, YZ
16	8	F-2122	FHCS, 5/16-18 X 1-1/4", YZ, GR5, FULL THD
17	2	F-2132	NUT, 1/4-20 NYLOC, FLANGED, YZ
18	3	F-2151	NUT, 3/8-16 NYLOC, FLANGED, YZ
19	2	F-2182	FHCS, 1/4-20 X 1-1/4", YZ, GR5
20	3	F-2222	FHCS, 3/8-16 X 5-1/2", YZ, GR5
21	4	F-2234	5/16-18 X 2 1/4" CARRIAGE BOLT, FULL THREAD
22	3	H-2768	ROLLER, 3-3/4 DIA. X 4"
23	2	H-2959	WEAR PAD
24	2	P-10935	DECAL, "WARNING ROTATING DRIVE"
25	1	P-10941	DECAL, "DANGER ROTATING BLADES"
26	1	P-11932	DECK BELT ROUTING
27	1	P-11950	DECAL, DECK SIZE, 48
28	1	P-12706	WARNING DECAL, DISCHARGE CHUTE

54" DECK ASSEMBLY {714H-002A}



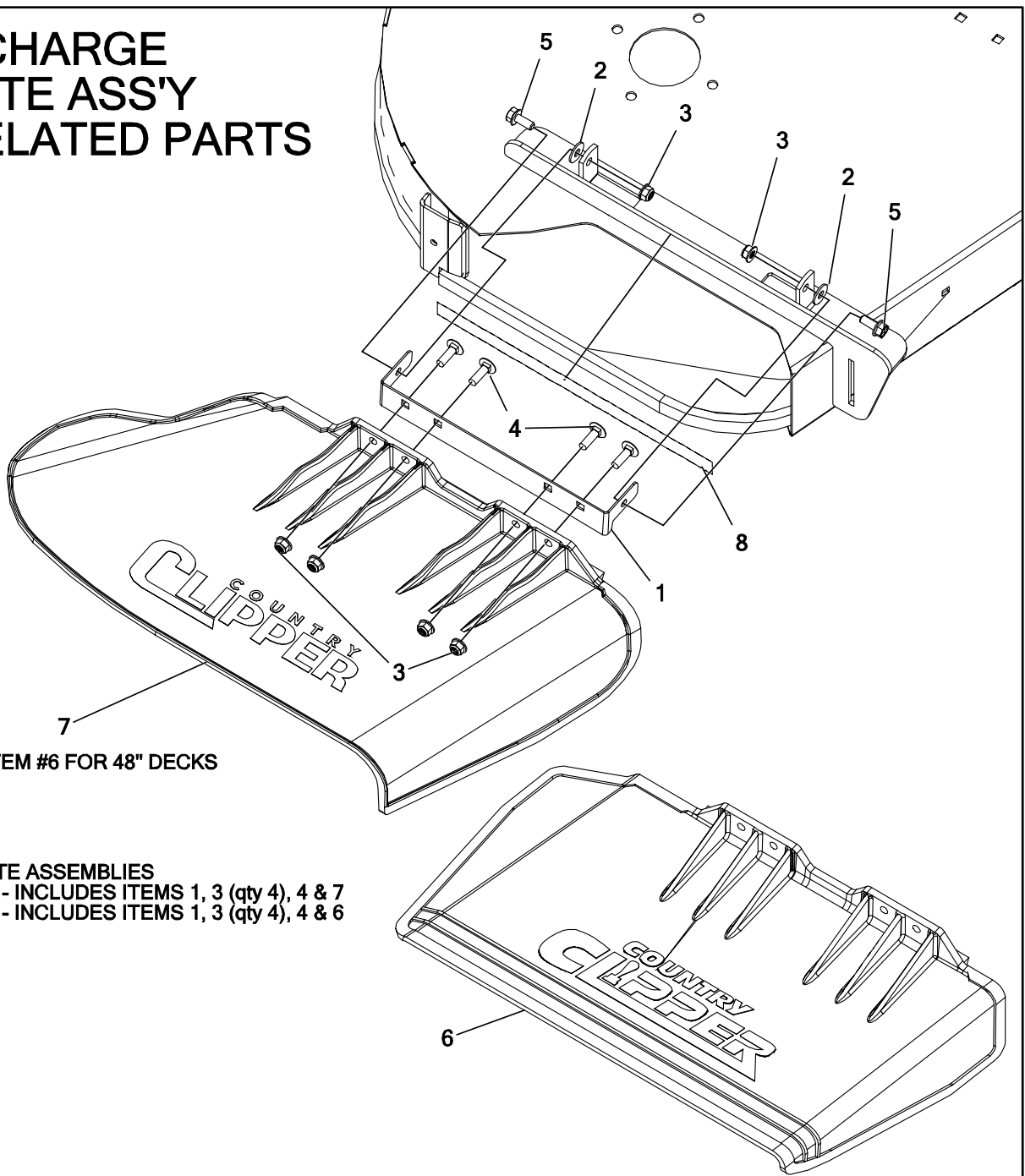
ITEM #	QTY	PART #	DESCRIPTION
1	1	714-018A	PULLEY COVER W/ DECALS, TRIM
2	1	714-019A	PULLEY COVER W/ DECALS, DISCHARGE
3	1	714-094A	54" DECK W/ DECALS
4	4	714-133P	BUSHING, ROLLER BRACKET
5	4	714-179P	PLATE, ADJUSTMENT W/FLANGE
6	4	714-383P	DECK HANGER TAB
7	4	714-424P	PLT, CLAMP
8	1	714C-005P	DECK STIFFENER, 54"
9	1	D-3950	BANDL BELT B-154
10	12	F-1671	CARRIAGE BOLT, 5/16-18 X 3/4", YZ, GR5
11	4	F-2030	HEX, WASHER HEAD SCREW, 1/4 X 5/8", SELF-TAPPING, YZ
12	24	F-2063	NUT, 5/16-18, NYLOC, FLANGED, YZ
13	8	F-2122	FHCS, 5/16-18 X 1-1/4", YZ, GR5, FULL THD
14	2	F-2132	NUT, 1/4-20 NYLOC, FLANGED, YZ
15	4	F-2151	NUT, 3/8-16 NYLOC, FLANGED, YZ
16	2	F-2182	FHCS, 1/4-20 X 1-1/4", YZ, GR5
17	4	F-2222	FHCS, 3/8-16 X 5-1/2", YZ, GR5
18	4	F-2234	5/16-18 X 2 1/4" CARRIAGE BOLT, FULL THREAD
19	4	H-2768	ROLLER, 3-3/4 DIA. X 4"
20	1	H-2938	PLATE, ROLLER BRACKET
21	1	H-2939	PLATE, ROLLER BRACKET
22	2	H-2959	WEAR PAD
23	2	P-10935	DECAL, "WARNING ROTATING DRIVE"
24	1	P-10941	DECAL, "DANGER ROTATING BLADES"
25	1	P-11932	DECK BELT ROUTING
26	1	P-12706	WARNING DECAL, DISCHARGE CHUTE
27	1	P-13131	DECAL, DECK SIZE, 54

60" DECK ASSEMBLY {714J-002A}



ITEM #	QTY	PART #	DESCRIPTION
1	1	714-018A	PULLEY COVER W/ DECALS, TRIM
2	1	714-019A	PULLEY COVER W/ DECALS, DISCHARGE
3	1	714-095A	60" DECK W/ DECALS
4	5	714-133P	BUSHING, ROLLER BRACKET
5	4	714-179P	PLATE, ADJUSTMENT W/FLANGE
6	4	714-383P	DECK HANGER TAB
7	4	714-424P	PLT, CLAMP
8	1	714D-005P	DECK STIFFENER, 60"
9	1	D-3951	BANDL BELT B-166
10	4	F-1269	BOLT,CARRIAGE 5/16-18 X 1", YZ, GR5
11	8	F-1671	CARRIAGE BOLT,5/16-18 X 3/4", YZ, GR5
12	4	F-2030	HEX, WASHER HEAD SCREW, 1/4 X 5/8", SELF-TAPPING, YZ
13	24	F-2063	NUT, 5/16-18, NYLOC, FLANGED, YZ
14	8	F-2122	FHCS, 5/16-18 X 1-1/4", YZ, GR5, FULL THD
15	2	F-2132	NUT, 1/4-20 NYLOC, FLANGED, YZ
16	5	F-2151	NUT, 3/8-16 NYLOC, FLANGED, YZ
17	2	F-2182	FHCS, 1/4-20 X 1-1/4", YZ, GR5
18	5	F-2222	FHCS, 3/8-16 X 5-1/2", YZ, GR5
19	4	F-2234	5/16-18 X 2 1/4" CARRIAGE BOLT, FULL THREAD
20	5	H-2768	ROLLER, 3-3/4 DIA. X 4"
21	1	H-2938	PLATE, ROLLER BRACKET
22	1	H-2939	PLATE, ROLLER BRACKET
23	2	H-2959	WEAR PAD
24	2	P-10935	DECAL, "WARNING ROTATING DRIVE"
25	1	P-10941	DECAL, "DANGER ROTATING BLADES"
26	1	P-11932	DECK BELT ROUTING
27	1	P-11952	DECAL, DECK SIZE, 60
28	1	P-12706	WARNING DECAL, DISCHARGE CHUTE

DISCHARGE CHUTE ASS'Y & RELATED PARTS



7

USE ITEM #6 FOR 48" DECKS

COMPLETE ASSEMBLIES

714-010A - INCLUDES ITEMS 1, 3 (qty 4), 4 & 7

643-111A - INCLUDES ITEMS 1, 3 (qty 4), 4 & 6

6

ITEM #	QTY	PART #	DESCRIPTION
1	1	714-112P	HINGE, DECK CHUTE
2	2	F-1009-02	WASHER, FLAT
3	6	F-2063	NUT, 5/16-18, NYLOC, FLANGED, YZ
4	4	F-2066	BOLT, CARRIAGE, 5/16-18 X 1", YZ, GR5
5	2	F-2120	FHCS, 5/16-18 X 3/4", YZ, GR5
6	1	H-2723	CHUTE, DISCHARGE, SMALL
7	1	H-2946	DECK CHUTE
8	1	P-13266	DECAL, MISSING CHUTE

DECK SPINDLE ASSEMBLY {D-3917}

BLADE PART NUMBERS

42" & 60" DECK

H-2885 HIGH LIFT W/O FUSION (STANDARD)
 H-2886 HIGH LIFT W/ FUSION
 H-2661 LOW LIFT
 H-2667 GATOR

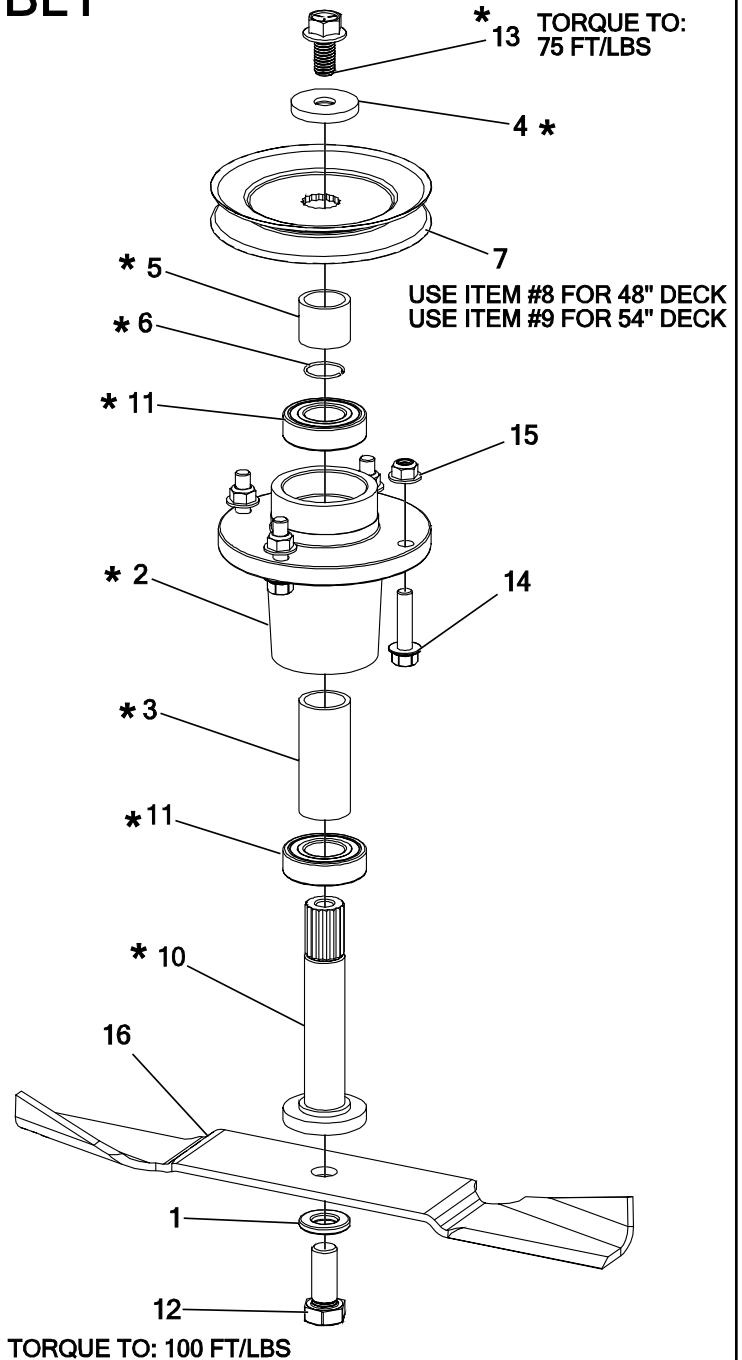
48" DECK

H-2882 HIGH LIFT W/O FUSION (STANDARD)
 H-2659 LOW LIFT
 H-2665 GATOR

54" DECK

H-2883 HIGH LIFT W/O FUSION (STANDARD)
 H-2884 HIGH LIFT W/ FUSION
 H-2660 LOW LIFT
 H-2666 GATOR

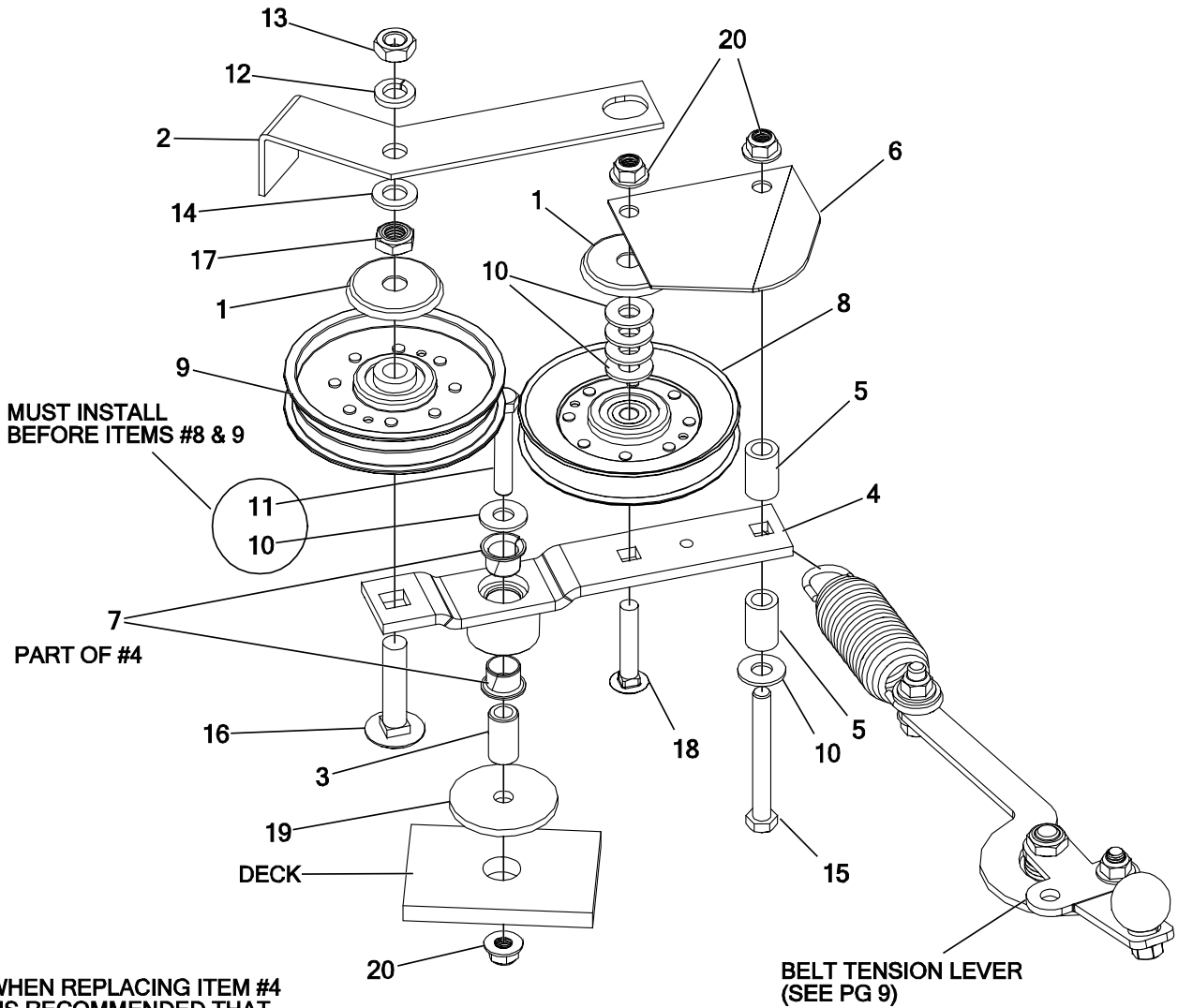
PARTS MARKED "*" THIS ARE
 PART OF COMPLETE ASS'Y D-3917



ITEM #	QTY	PART #	DESCRIPTION
1	1	660-099P	WASHER, BLADE, 5/8
2	1	-	SPINDLE HOUSING
3	1	-	SPINDLE SPACER
4	1	-	SPINDLE HARD WASHER
5	1	-	SPINDLE OUTER SPACER
6	1	-	SPINDLE RETAINIG RING
7	1	D-3918	PULLEY, 5.195, A-B, DECK
8	1	D-3919	PULLEY, 4.039, A-B, DECK
9	1	D-3920	PULLEY, 4.513, A-B, DECK

ITEM #	QTY	PART #	DESCRIPTION
10	1	D-3961	SPINDLE SHAFT
11	2	D-3962	SPINDLE BRG
12	1	F-2073	HHCS, 5/8-11 X 1-1/2", GR8, YZ
13	1	F-2143	FHCS, 1/2-13 X 1", YZ, GR5
14	4	F-2147	FHCS, 3/8-16 X 1-1/2", YZ, GR5
15	4	F-2151	NUT, 3/8-16 NYLOC, FLANGED, YZ
16	1	(SEE LIST)	BLADE

DOUBLE IDLER DRIVE BELT IDLER 42" DECK



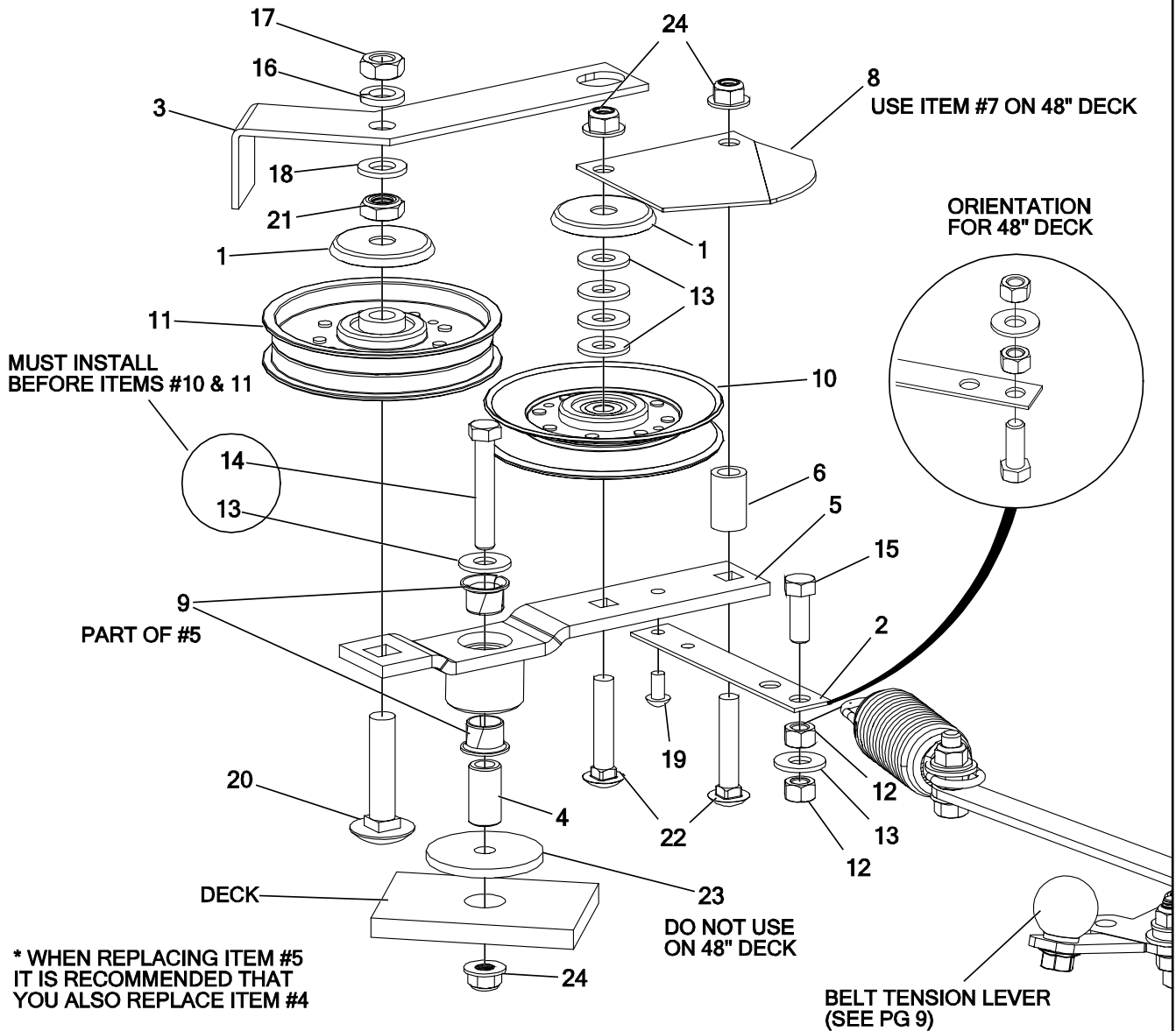
* WHEN REPLACING ITEM #4
IT IS RECOMMENDED THAT
YOU ALSO REPLACE ITEM #3

BELT TENSION LEVER
(SEE PG 9)

ITEM #	QTY	PART #	DESCRIPTION
1	2	620-201P	WASHER, BEARING CAP
2	1	680-110P	BELT KEEPER, B BELT
3	1	680-135P	MOUNTING PIN
4	1	680-147A	IDLER ARM ASSEMBLY
5	2	688-021P	SPACER, BELT GUARD
6	1	688-029P	BELT GUARD
7	2	D-3730	BUSHING, DU 5/8 DIA X 1/2 LG
8	1	D-3923	PULLEY, V-IDLER, 4.59OD, AB, NTN
9	1	D-3924	PULLEY, FLAT IDLER, 4.25 OD, NTN, DBL INSERT
10	6	F-1009-03	WASHER, FLAT, STD, STEEL 3/8" W SERIES
11	1	F-1266	HHCS, 3/8-16 X 2-1/4", YZ, GR5

ITEM #	QTY	PART #	DESCRIPTION
12	1	F-1464	LOCKWASHER, 1/2"
13	1	F-1489	NUT, HEX, JAM, 1/2-13, YZ
14	1	F-1521	WASHER, 1/2" CUSTOM, YZ
15	1	F-1616	CAPSCREW, 3/8-16 X 3-1/4 GR. 5
16	1	F-1822	BOLT, CARRIAGE, 1/2-13 X 2-1/4", YZ, GR5
17	1	F-1986	NUT, THIN, 1/2-13, NYLOC, YZ
18	1	F-1976	BOLT, CARRIAGE, 3/8-16 X 2", YZ, GR5
19	1	F-2102	WASHER, 2.25 OD X .406 ID X 7GA, YZ
20	3	F-2151	NUT, 3/8-16 NYLOC, FLANGED, YZ

DOUBLE IDLER DRIVE BELT IDLER 48", 54" & 60" DECK

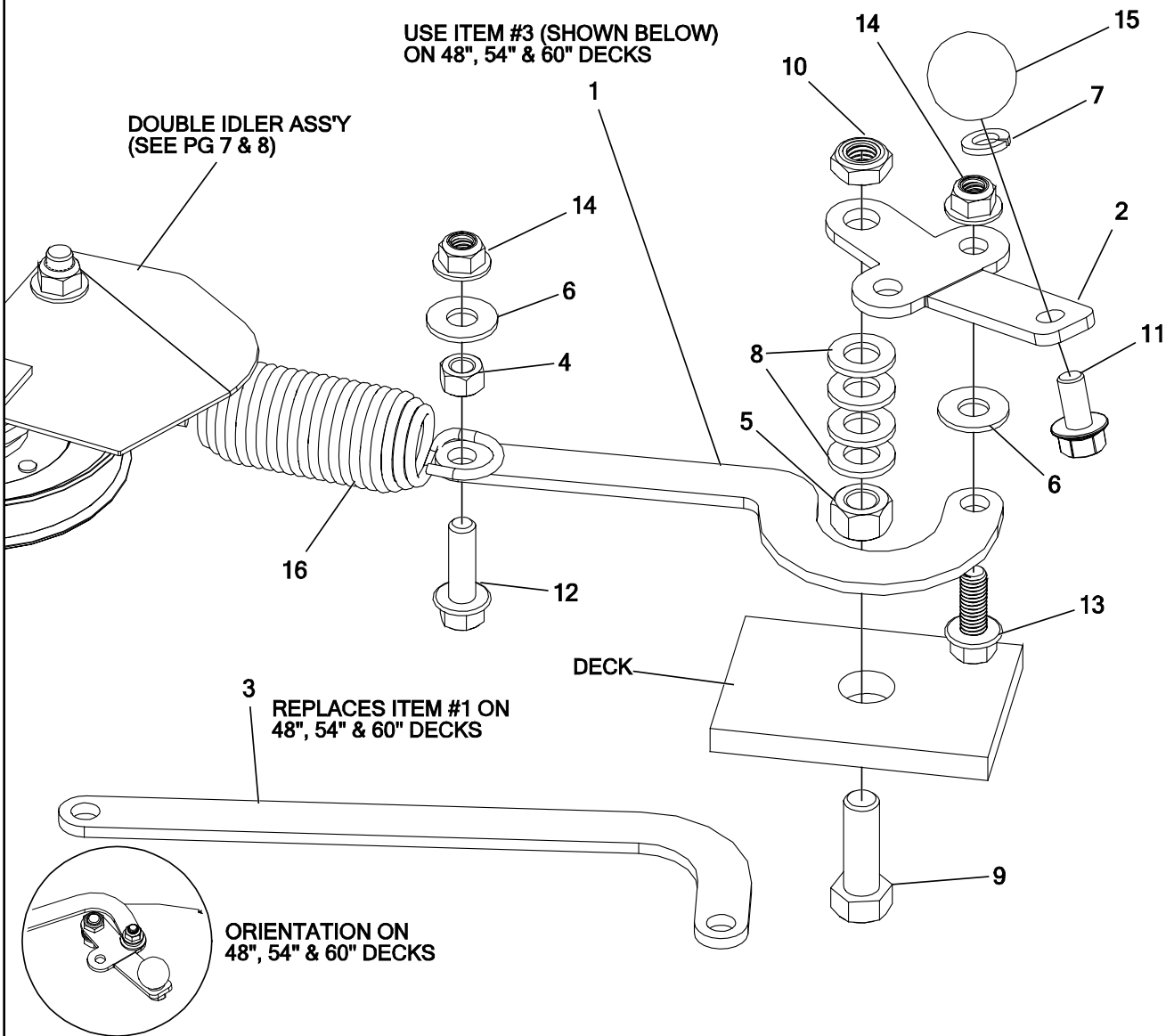


* WHEN REPLACING ITEM #5
IT IS RECOMMENDED THAT
YOU ALSO REPLACE ITEM #4

ITEM #	QTY	PART #	DESCRIPTION
1	2	620-201P	WASHER, BEARING CAP
2	1	660-081P	EXTENSION, SPRING
3	1	660-110P	BELT KEEPER, B BELT
4	1	660-135P	MOUNTING PIN
5	1	660-147A	FVDSAF
6	1	668-021P	SPACER, BELT GUARD
7	1	668-029P	BELT GUARD
8	1	714-183P	BELT GUARD, 54"
9	2	D-3730	BUSHING, DU 5/8 DIA X 1/2 LG
10	1	D-3923	PULLEY, V-IDLER, 4.59OD, AB, NTN
11	1	D-3924	PULLEY, FLAT IDLER, 4.25 OD, NTN, DBL INSERT
12	2	F-1005-03	NUT, 3/8-16, CENTERLOCK, YZ, GR5
13	6	F-1009-03	WASHER, FLAT, STD, STEEL 3/8" W SERIES

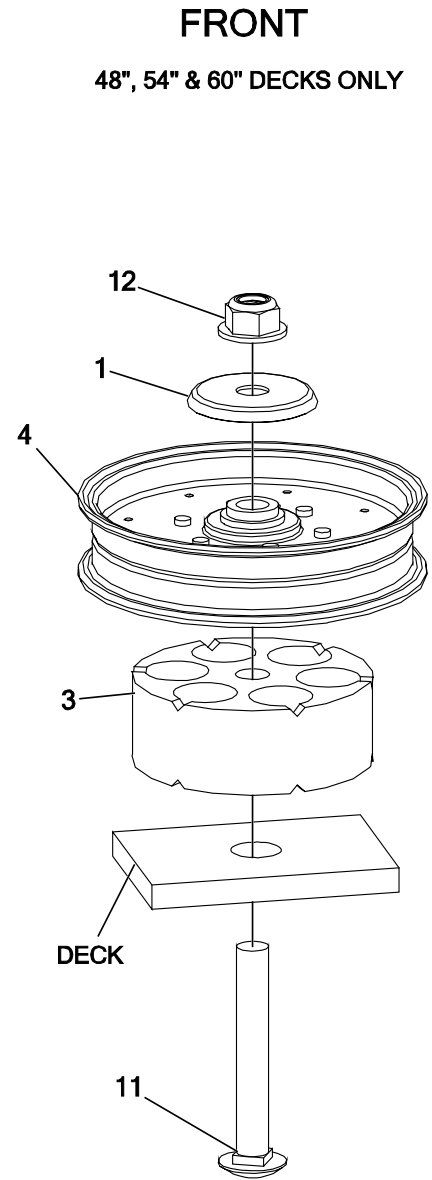
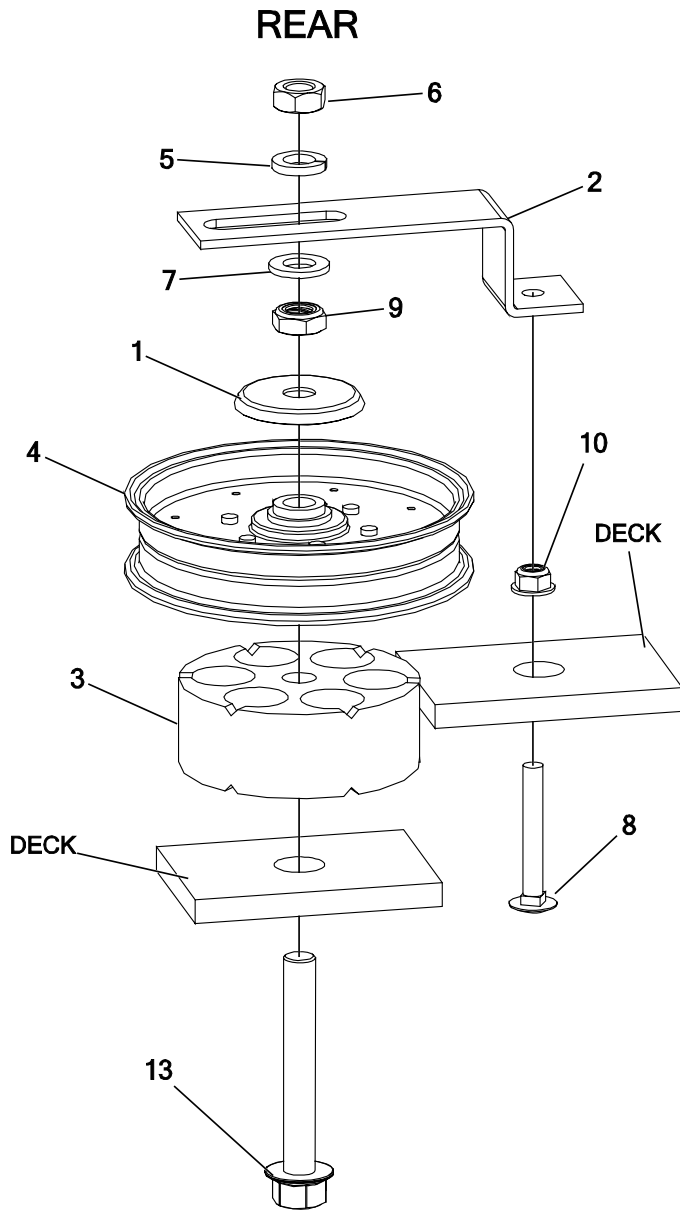
ITEM #	QTY	PART #	DESCRIPTION
14	1	F-1268	HHCS, 3/8-16 X 2-1/4", YZ, GR5
15	1	F-1394	HHCS, 3/8-16NC X 1", GR.5, YELLOW PLATED
16	1	F-1464	LOCKWASHER, 1/2"
17	1	F-1489	NUT, HEX, JAM, 1/2-13, YZ
18	1	F-1521	WASHER, 1/2" CUSTOM, YZ
19	1	F-1733	DRIVE SCREW, 1/4" X 1/2", RND HD
20	1	F-1822	BOLT, CARRIAGE, 1/2-13 X 2-1/4", YZ, GR5
21	1	F-1966	NUT, THIN, 1/2-13, NYLOC, YZ
22	2	F-1976	BOLT, CARRIAGE, 3/8-16 X 2", YZ, GR5
23	1	F-2102	WASHER, 2.25 OD X .406 ID X 7GA, YZ
24	3	F-2151	NUT, 3/8-16 NYLOC, FLANGED, YZ

BELT TENSION LEVER



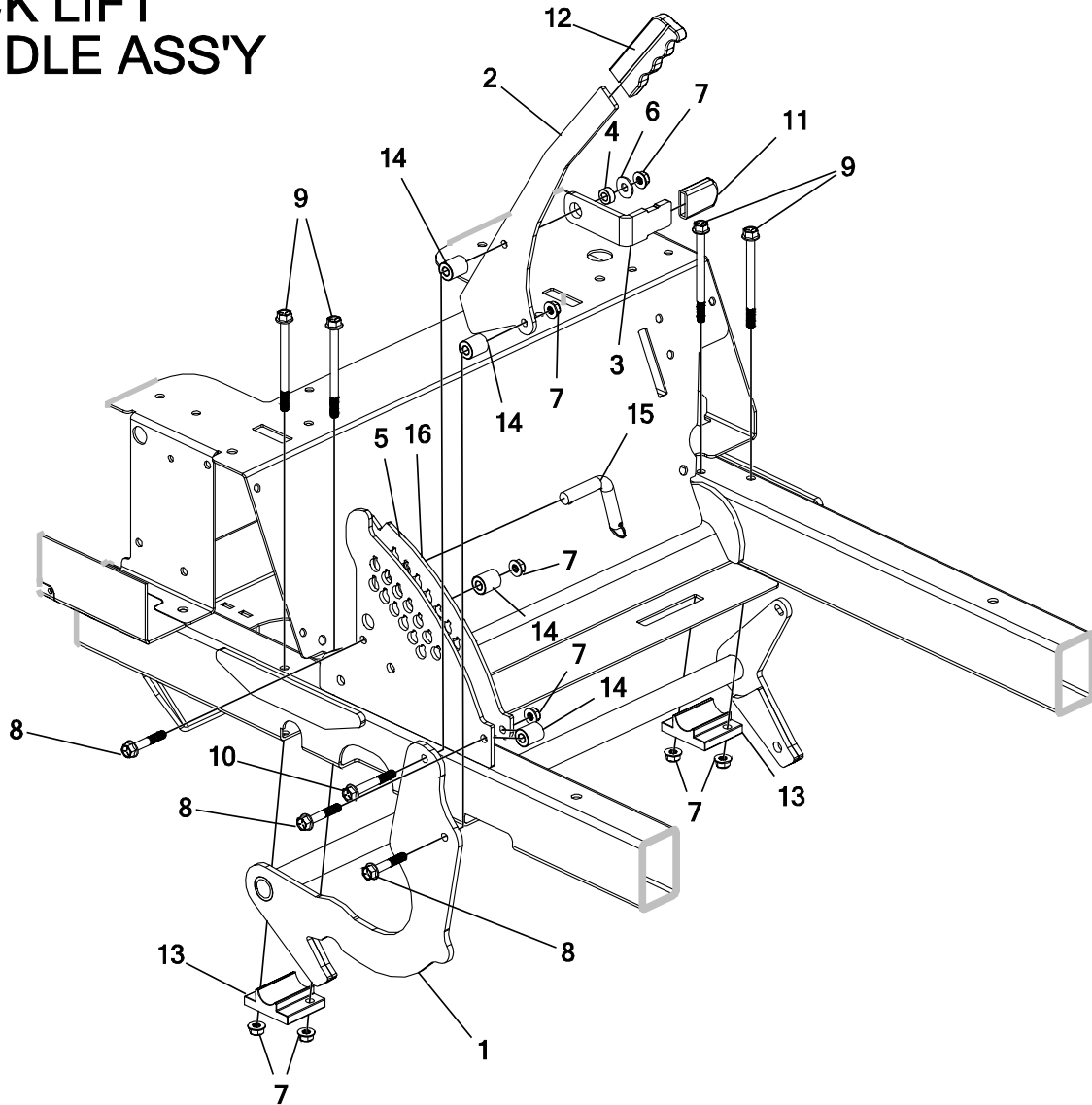
ITEM #	QTY	PART #	DESCRIPTION
1	1	660-031P	BELT TIGHTENER ARM
2	1	660-184P	HANDLE, BELT TENSIONER
3	1	714-180P	BELT TENSION ARM
4	1	F-1005-03	NUT, 3/8-16, CENTERLOCK, YZ, GR5
5	1	F-1005-05	NUT, 1/2-13, CENTERLOCK, YZ, GR5
6	2	F-1008-03	WASHER, FLAT, STD, STEEL 3/8" W SERIES
7	1	F-1019-03	LOCKWASHER, HVY, 3/8, YZ
8	4	F-1521	WASHER, 1/2" CUSTOM, YZ
9	1	F-1526	HHSCREW, 1/2-13 UNC X 1-1/2 GR. 5 YELLOW PLATED
10	1	F-1966	NUT, THIN, 1/2-13, NYLOC, YZ
11	1	F-2124	FHCS, 3/8-16 X 3/4", YZ, GR5
12	1	F-2125	FHCS, 3/8-16 X 1-1/4", YZ, GR5
13	1	F-2141	FHCS, 3/8-16 X 1", YZ, GR5
14	2	F-2151	NUT, 3/8-16 NYLOC, FLANGED, YZ
15	1	H-2405	BALL, 1-1/4", 3/8-16THRD, BLK THERMOPLASTIC STEEL INSERT
16	1	H-2619	SPRING, 5 X 1-1/2, TAPERED ENDS

FIXED IDLER ASSEMBLIES



ITEM #	QTY	PART #	DESCRIPTION
1	2	620-201P	WASHER, BEARING CAP
2	1	660-114P	BELT KEEPER, SINGLE END
3	2	660-148P	SPACER, IDLER MOUNT
4	2	D-3904	PULLEY, FLAT IDLER, 5"
5	1	F-1464	LOCKWASHER, 1/2"
6	1	F-1489	NUT, HEX, JAM, 1/2-13, YZ
7	1	F-1521	WASHER, 1/2" CUSTOM, YZ
8	1	F-1707	CARRIAGE BOLT, 5/16-18 X 2-1/4 ZINC PLATED
9	1	F-1966	NUT, THIN, 1/2-13, NYLOC, YZ
10	1	F-2063	NUT, 5/16-18, NYLOC, FLANGED, YZ
11	1	F-2106	BOLT, CARRIAGE, 1/2-13 X 3-1/2", YZ, GR5
12	1	F-2152	NUT, 1/2-13 NYLOC, FLANGED, YZ
13	1	F-2163	FHCS, 1/2-13 X 3-1/2", YZ, GR5

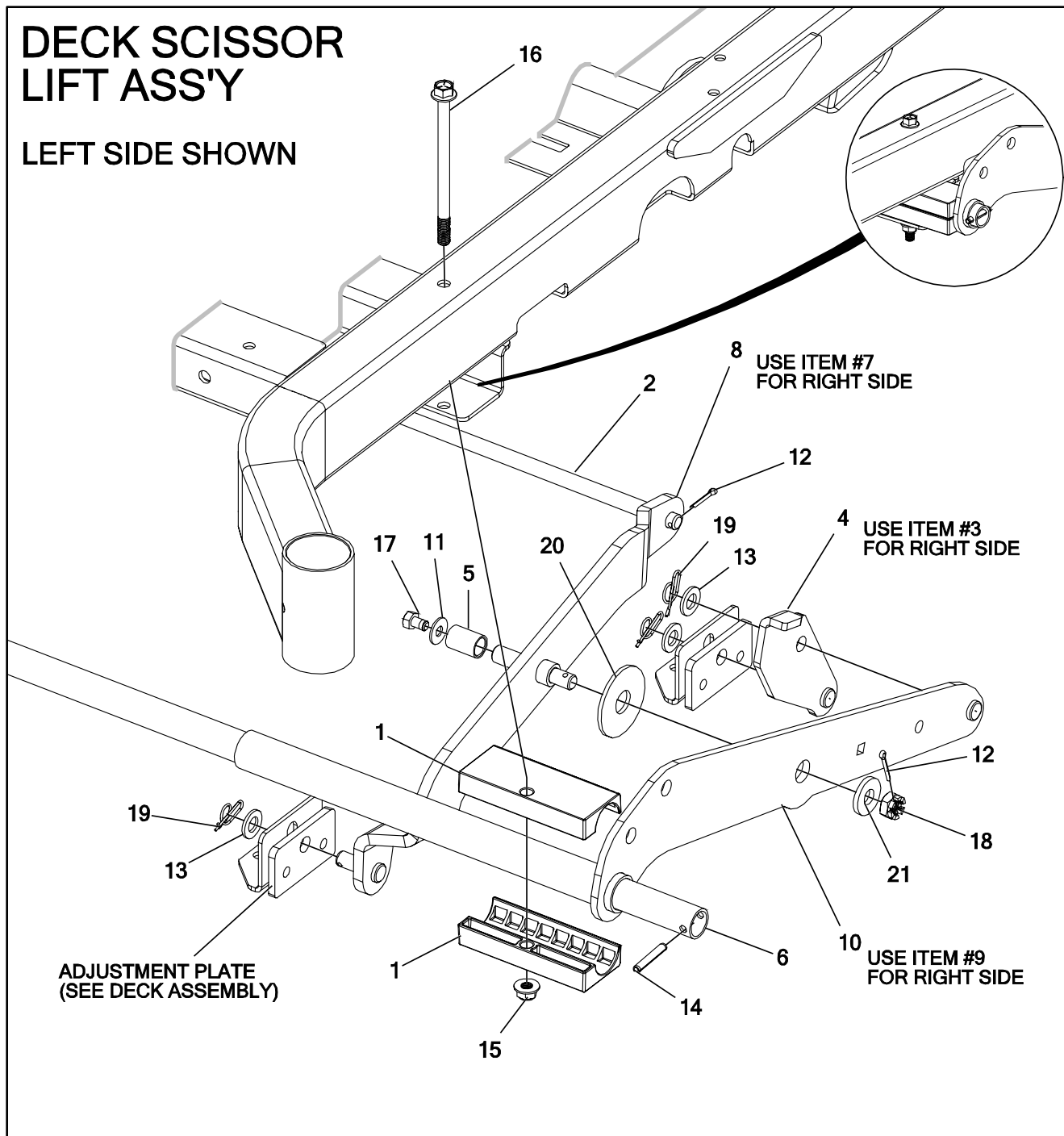
DECK LIFT HANDLE ASS'Y



ITEM #	QTY	PART #	DESCRIPTION
1	1	714-049W	WLD'T, LIFT HANDLE
2	1	714-364P	PLT, CUT HT LEVER
3	1	720-041P	PLATE, CATCH
4	1	720-042P	SPACER, LATCH PIVOT
5	1	721-012P	PLT, HEIGHT ADJUST, INSIDE
6	1	F-1009-02	WASHER, FLAT
7	8	F-2063	NUT, 5/16-18, NYLOC, FLANGED, YZ
8	3	F-2123	FHCS, 5/16-18 X 1-3/4", YZ, GR5
9	4	F-2220	FHCS, 5/16-18 X 4", YZ, GR5
10	1	F-2248	FHCS, 5/16-18 X 2-1/4", YZ, GR8
11	1	H-1850	GRIP, VINYL
12	1	H-1926	1/4" X 1" HANDLE GRIP
13	2	H-2960	HANGER BEARING
14	4	H-2963	SPACER, HANDLE
15	1	H-3013	DECK HEIGHT PIN
16	1	P-13271	DECAL, 4-1/2" DECK HEIGHT

DECK SCISSOR LIFT ASS'Y

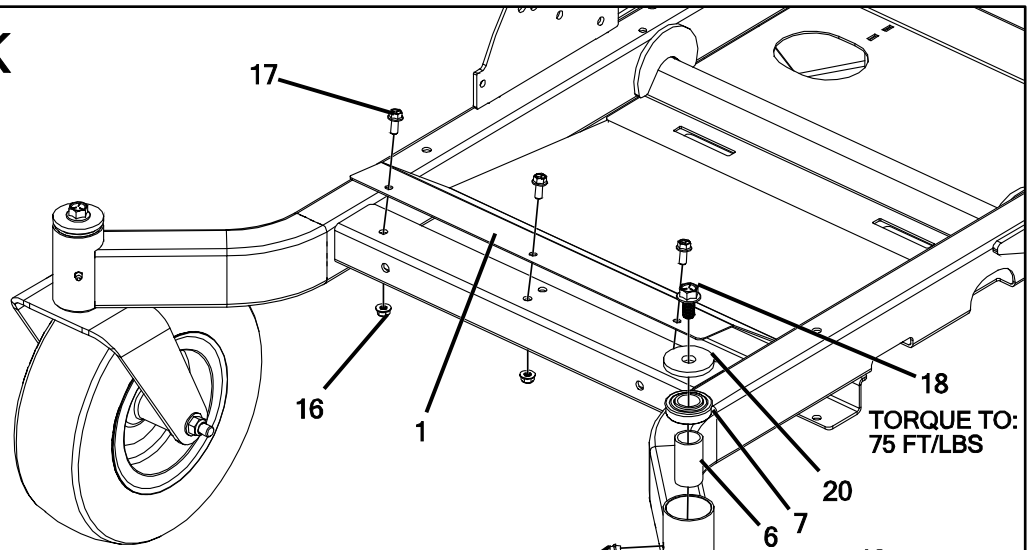
LEFT SIDE SHOWN



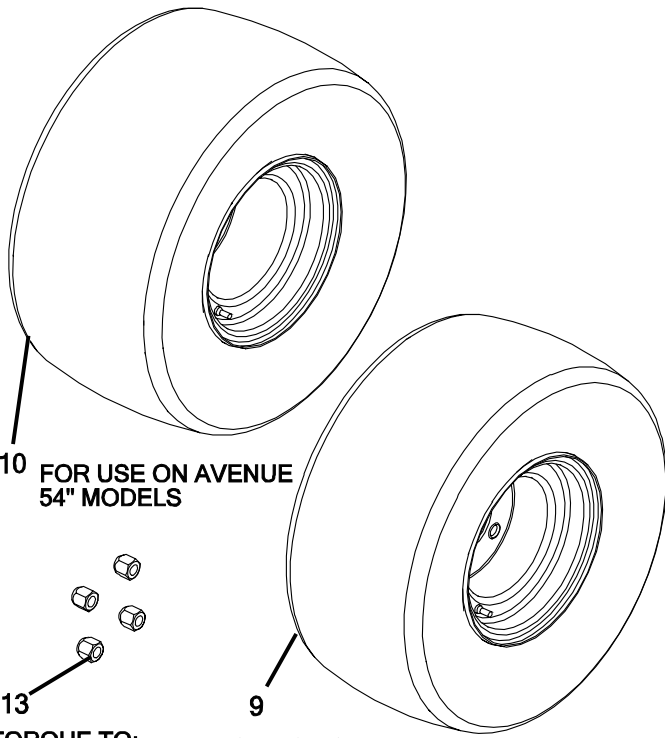
ITEM #	QTY	PART #	DESCRIPTION
1	4	714-028P	BEARING, DECK PIVOT
2	1	714-045P	PIN, REAR STOP
3	1	714-207W	WLDT, DROP LINK, RH
4	1	714-208W	WLDT, DROP LINK, L
5	2	714-260P	SLEEVE, ROLLER
6	1	714-273P	PIN, DECK HINGE
7	1	720-024W	WLDT, SCISSOR BAR, R
8	1	720-025W	WLDT, SCISSOR BAR, L
9	1	720-029W	WLDT, DECK MOUNT, R
10	1	720-030W	WLDT, DECK MOUNT, L
11	2	F-1009-02	WASHER, FLAT

ITEM #	QTY	PART #	DESCRIPTION
12	4	F-1491	COTTER PIN, 1/8 X 1
13	6	F-1521	WASHER, 1/2" CUSTOM, YZ
14	2	F-2009	ROLL PIN, SPIROL, 1/4 X 1-1/2"
15	2	F-2151	NUT, 3/8-16 NYLOC, FLANGED, YZ
16	2	F-2222	FHCS, 3/8-16 X 5-1/2", YZ, GR5
17	2	F-2223	HHCS, 5/16-18 X 1/2", NY PATCH, ZINC, GR5
18	2	F-2236	CASTLE NUT, 1/2-20
19	6	H-2239	1/2" RUE RING
20	2	H-3038	SPACER, SCISSOR
21	2	H-3039	WASHER, SPECIAL, 1/2" X 1-1/4"

FOOT DECK & TIRES {AVENUE}

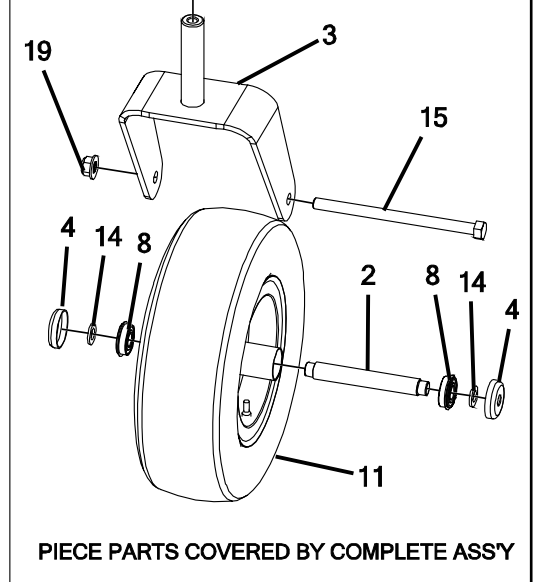
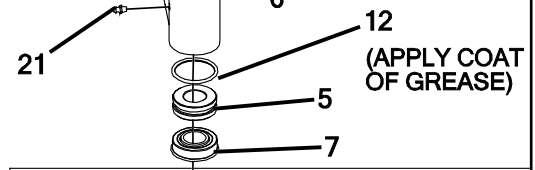


REAR DRIVE TIRES



TORQUE TO:
75 FT/LBS

FOR USE ON AVENUE
42" MODELS



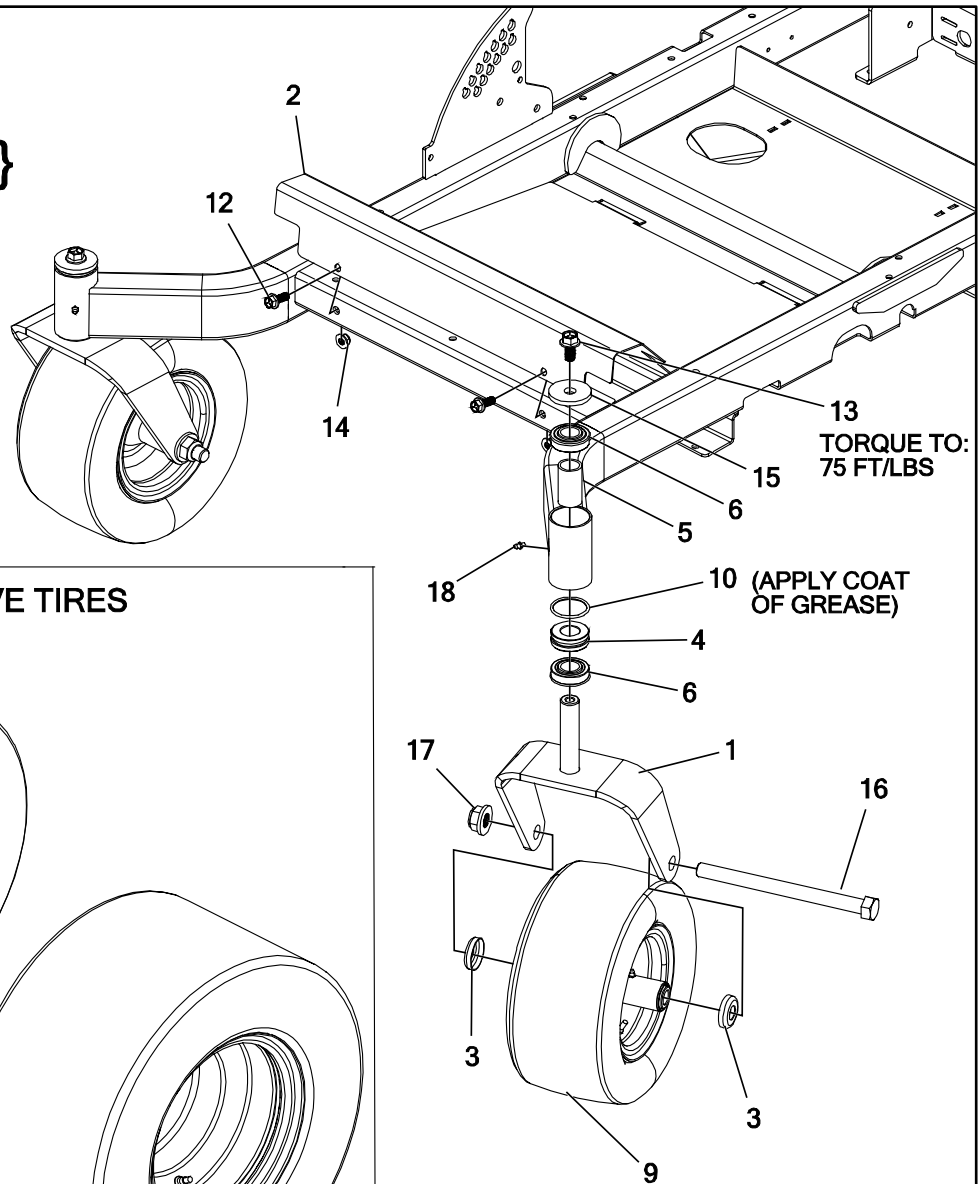
COMPLETE ASSEMBLIES AVAILABLE
UPON REQUEST

714-228A - RIGHT
714-229A - LEFT

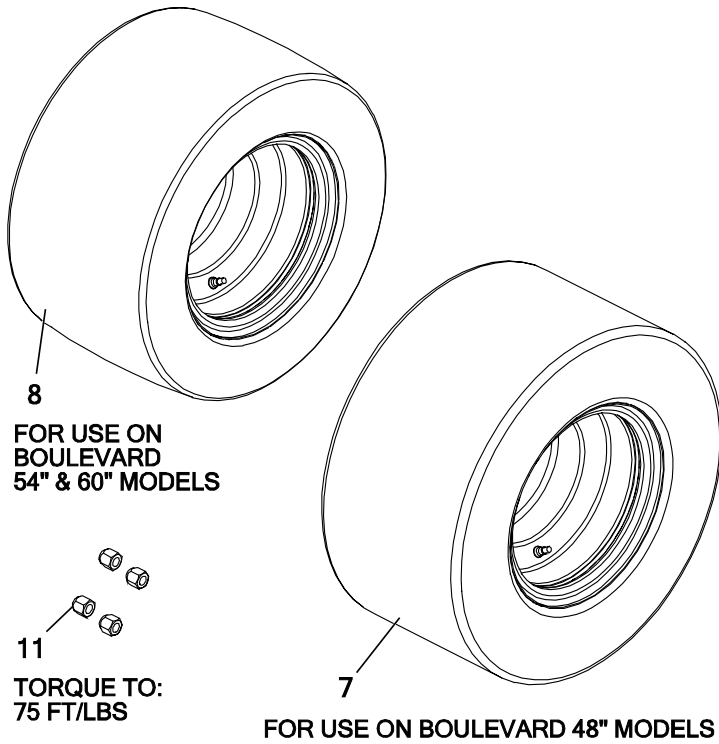
ITEM #	QTY	PART #	DESCRIPTION
1	1	714-055P	PLATE, FLOOR
2	2	714-225P	SPACER, CASTER BEARING
3	2	714-227W	WLD'T, CASTER YOKE
4	4	714-277P	CAP, BEARING, SMALL
5	2	720-047P	DRAG RING
6	2	720-048P	SPACER, BEARING, CASTER
7	4	D-2008-02	BEARING, SPD, SF-16-32
8	4	D-3432	BEARING, 5/8 I.D. X 1-3/8 O.D.
9	2	D-3729	TIRE, 18 X 8.5-8 TURFMASTER
10	2	D-3870	TIRE, 18 X 9.50-8, TURF MASTER
11	2	D-3956	TIRE ASSY, 13 X 5-6, WHITE, SM BEARING, SMOOTH

ITEM #	QTY	PART #	DESCRIPTION
12	2	D-3969	O-RING, -224, 70 DURO NITRILE
13	8	F-1499	LUG NUT, 1/2-20, YZ
14	4	F-1521	WASHER, 1/2" CUSTOM, YZ
15	2	F-1683	HHCS, 1/2-13 X 7-1/2", YZ, GR5
16	3	F-2063	NUT, 5/16-18, NYLOC, FLANGED, YZ
17	3	F-2120	FHCS, 5/16-18 X 3/4", YZ, GR5
18	2	F-2143	FHCS, 1/2-13 X 1", YZ, GR5
19	2	F-2152	NUT, 1/2-13 NYLOC, FLANGED, YZ
20	2	F-2179	WASHER, CASTER, .531 ID X 2.25 OD X .25THK, YZ
21	2	H-1056	1/4" GREASE FITTING

FOOT DECK & TIRES {BOULEVARD}



REAR DRIVE TIRES



FOR USE ON
BOULEVARD
54" & 60" MODELS

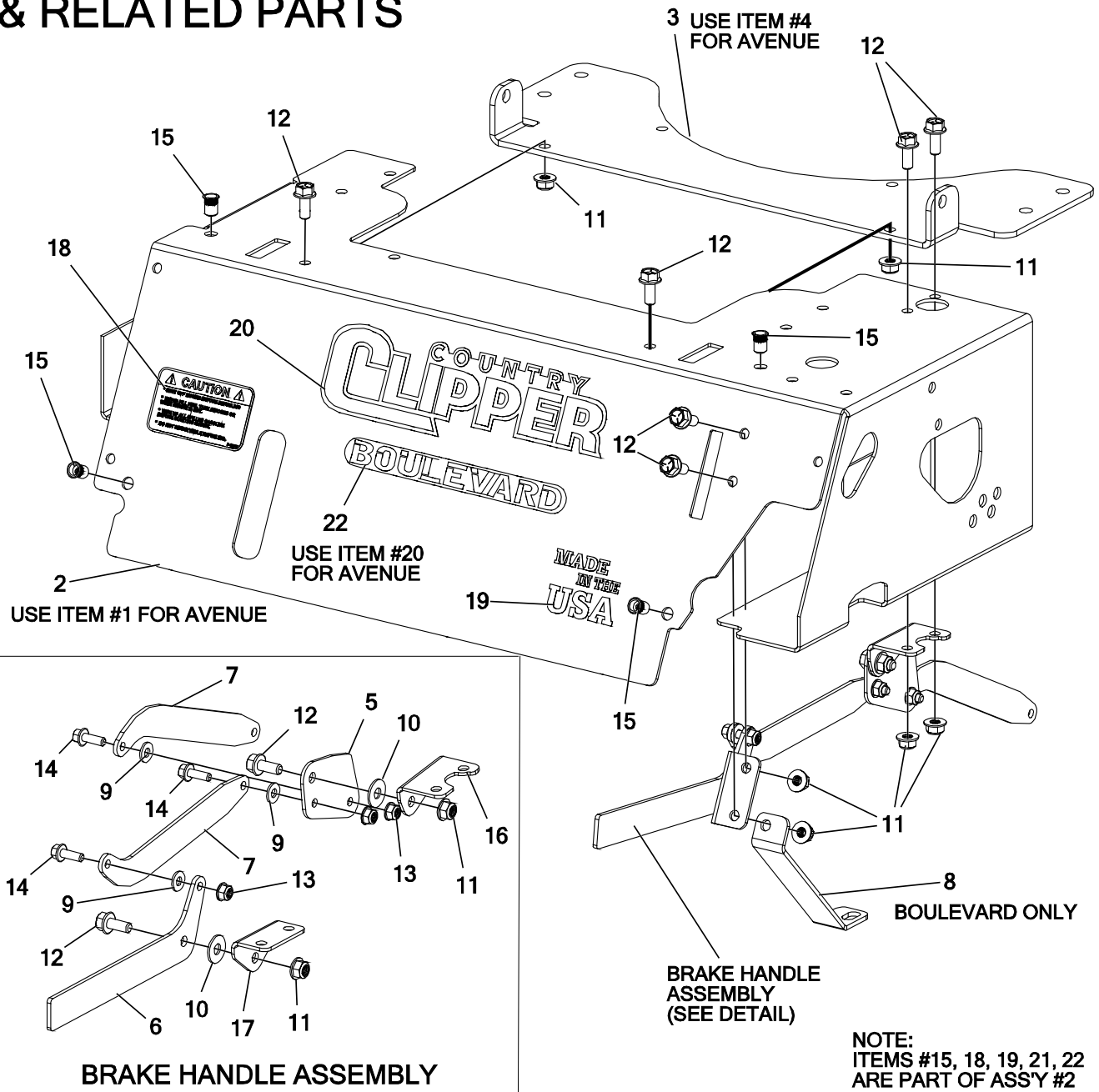
11
TORQUE TO:
75 FT/LBS

FOR USE ON BOULEVARD 48" MODELS

ITEM #	QTY	PART #	DESCRIPTION
1	2	714-219W	WLDT, CASTER YOKE
2	1	714-233P	PLATE, FLOOR
3	4	714-252P	CAP, BEARING, SMALL, 3/4"
4	2	720-047P	DRAG RING
5	2	720-048P	SPACER, BEARING, CASTER
6	4	D-2008-02	BEARING, SPD, SF-16-32
7	2	D-3353	TIRE ASSY, 20 X 10-10
8	2	D-3787	TIRE ASSY 20 X 12-10
9	2	D-3957	TIRE ASSY, 13 X 6.5-6, WHITE, SM BEARING, SMOOTH
10	2	D-3969	O-RING, -224, 70 DURO NITRILE

ITEM #	QTY	PART #	DESCRIPTION
11	8	F-1499	LUG NUT, 1/2-20, YZ
12	2	F-2141	FHCS, 3/8-16 X 1", YZ, GR5
13	2	F-2143	FHCS, 1/2-13 X 1", YZ, GR5
14	2	F-2151	NUT, 3/8-16 NYLOC, FLANGED, YZ
15	2	F-2179	WASHER, CASTER, .531 ID X 2.25 OD X .25THK, YZ
16	2	F-2194	HHCS, 3/4-10 X 9-1/2", YZ, GR5
17	2	F-2195	NUT, FLANGE NYLOC, YZ
18	2	H-1056	1/4" GREASE FITTING

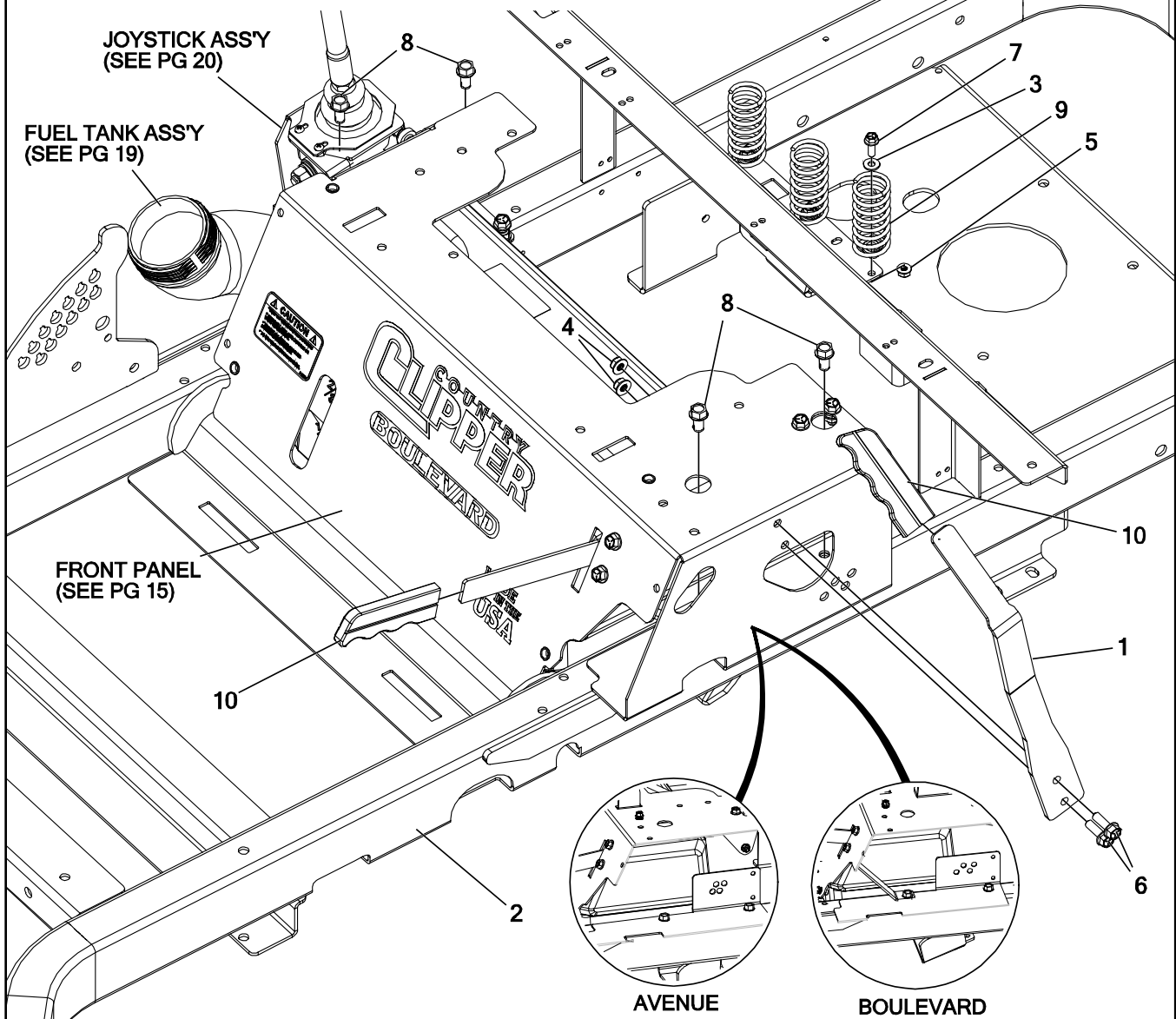
FRONT PANEL ASS'Y & RELATED PARTS



ITEM #	QTY	PART #	DESCRIPTION
1	1	714-020A	FRONT PANEL w/ DECALS, AVE
2	1	714-021A	FRONT PANEL w/ DECALS, BLVD
3	1	714-290P	PLATE, BASE, SEAT MOUNT
4	1	714-314P	PLATE, SEAT HINGE
5	1	714-345P	CRANK PLATE, PARK BRAKE
6	1	714-348P	HANDLE, PARK BRAKE
7	2	714-349P	BAR, LINK, PARK BRAKE
8	1	714-351P	BRACE, FRONT PANEL
9	3	F-1009-01	WASHER, FLAT STD, STEEL, 1/4" YELLOW PLATED
10	2	F-1009-02	WASHER, FLAT
11	8	F-2063	NUT, 5/16-18, NYLOC, FLANGED, YZ
12	8	F-2120	FHCS, 5/16-18 X 3/4", YZ, GR5

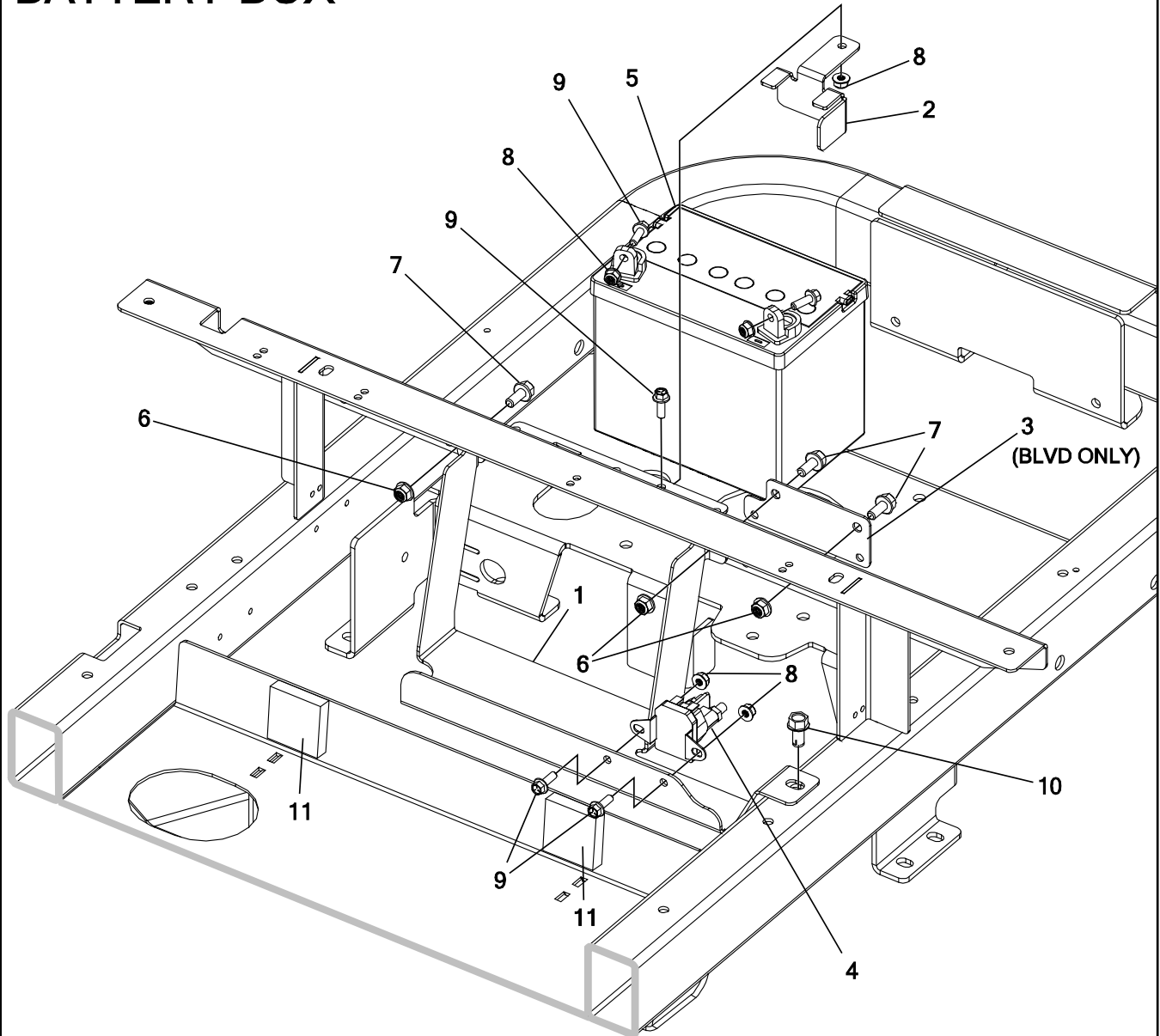
ITEM #	QTY	PART #	DESCRIPTION
13	3	F-2132	NUT, 1/4-20 NYLOC, FLANGED, YZ
14	3	F-2162	FHCS, 1/4-20 X 3/4", YZ, GR5
15	4	F-2229	NUT, RIVET, 1/4-20, OPEN END
16	1	H-2934	PIVOT, BRAKE CRANK
17	1	H-2935	PLATE, BRAKE HANDLE
18	1	P-12557	DECAL, "CAUTION FUEL"
19	1	P-13000	DECAL, MADE IN THE USA
20	1	P-13312	DECAL, LOGO, CHROME w/BLK, LG
21	1	P-13313	DECAL, AVENUE
22	1	P-13314	DECAL, BOULEVARD

FRONT PANEL ASS'Y & RELATED PARTS (CON'T)



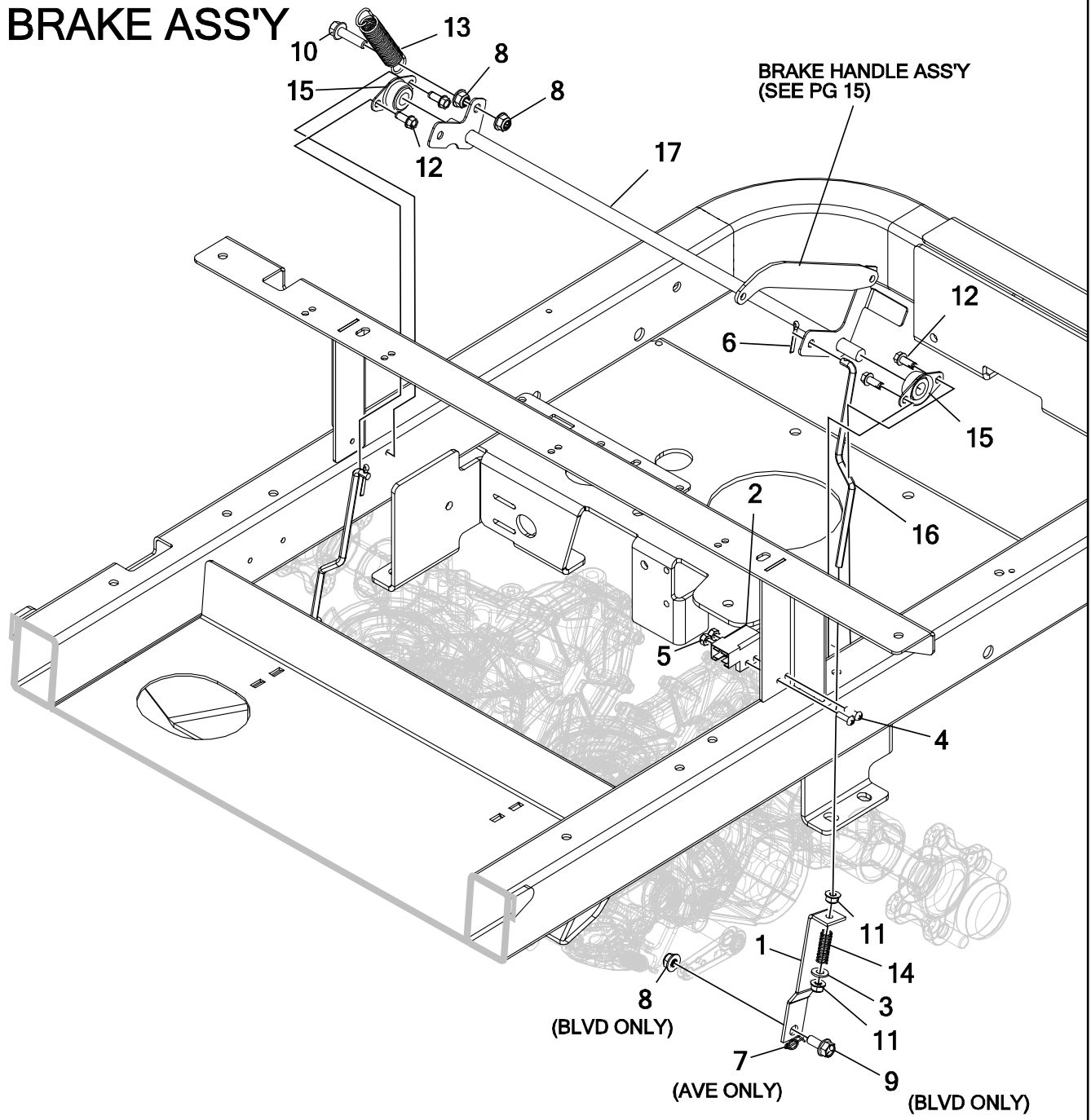
ITEM #	QTY	PART #	DESCRIPTION
1	1	720-069P	HANDLE, SECURITY
2	1	D-3975	WLDT, FRAME, FIXED FRONT END
3	3	F-1009-01	WASHER, FLAT STD, STEEL, 1/4" YELLOW PLATED
4	2	F-2063	NUT, 5/16-18, NYLOC, FLANGED, YZ
5	3	F-2132	NUT, 1/4-20 NYLOC, FLANGED, YZ
6	2	F-2148	FHCS, 5/16-18 X 1", YZ, GR5
7	3	F-2162	FHCS, 1/4-20 X 3/4", YZ, GR5
8	4	F-2219	HFCS, 3/8-16 X 3/4", CZ, THD FORMING
9	3	H-1920	SPRING, SEAT
10	2	H-1926	1/4" X 1" HANDLE GRIP

BATTERY BOX



ITEM #	QTY	PART #	DESCRIPTION
1	1	714-034P	BOX, BATTERY
2	1	714-214P	PLT, BATTERY HOLD DOWN
3	1	714-318P	PLT, TANK MOUNT
4	1	E-6054	SOLENOID 12VOLT
5	1	E-6604	BATTERY, 12V, 150CCA
6	3	F-2063	NUT, 5/16-18, NYLOC, FLANGED, YZ
7	3	F-2120	FHCS, 5/16-18 X 3/4", YZ, GR5
8	5	F-2132	NUT, 1/4-20 NYLOC, FLANGED, YZ
9	5	F-2162	FHCS, 1/4-20 X 3/4", YZ, GR5
10	1	F-2219	HFCS, 3/8-16 X 3/4", CZ, THD FORMING
11	2	H-2990	FOAM PAD, 1/2 X 2" X 2"

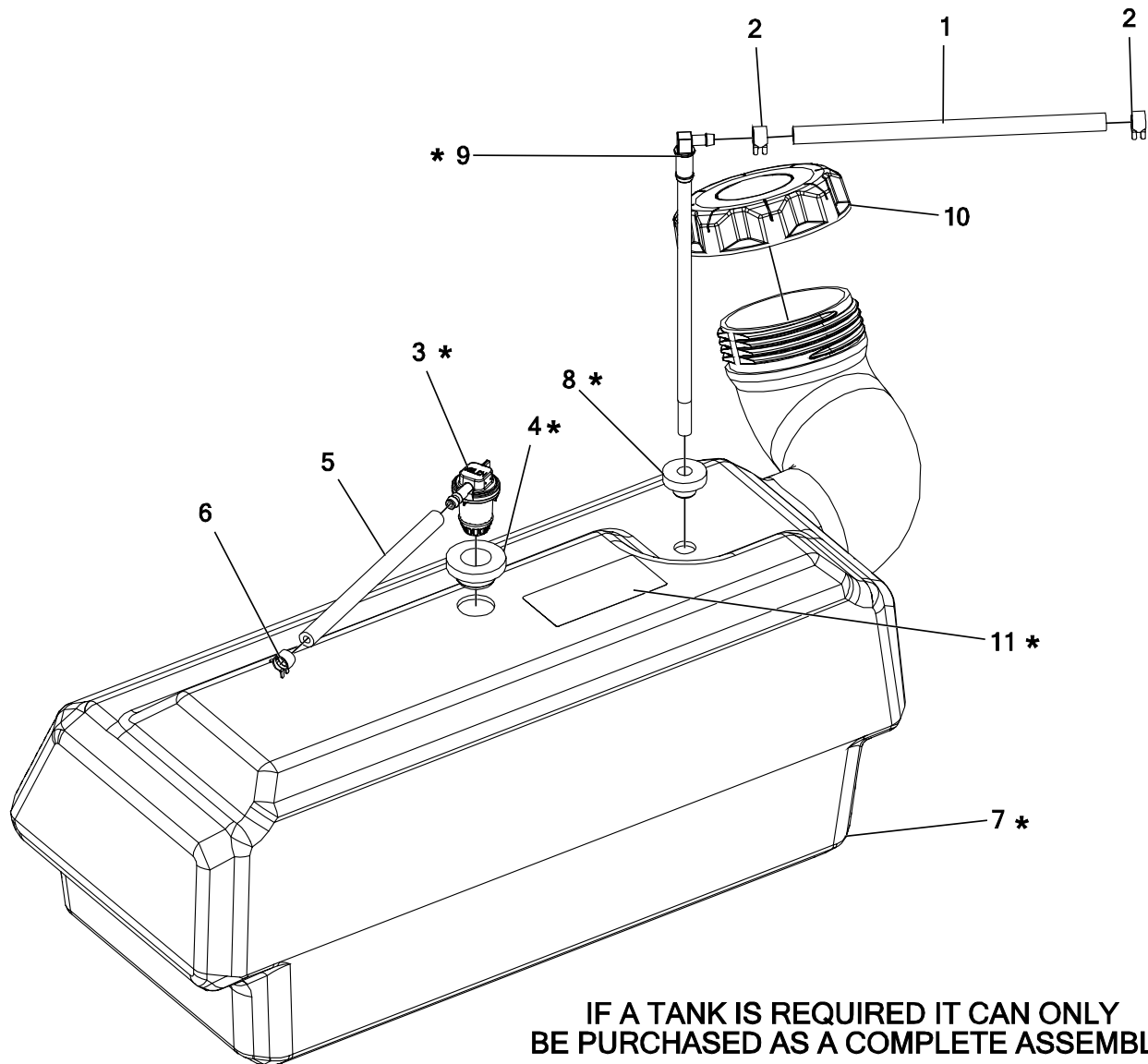
BRAKE ASS'Y



ITEM #	QTY	PART #	DESCRIPTION
1	2	659-159P	BRAKE LINK
2	1	E-6297	BRAKE SWITCH
3	2	F-1009-01	WASHER,FLAT STD, STEEL, 1/4" YELLOW PLATED
4	2	F-1022-26	MACHINE SCREW,RND, 10-32 X 5/8, SLOTTED, CZ
5	2	F-1448	LOCKNUT, 10-32 NYLOC YELLOW PLTD
6	2	F-1491	COTTER PIN, 1/8 X 1
7	2	F-1492	5/16-3/8 RUE RING
8	4	F-2063	NUT, 5/16-18, NYLOC, FLANGED, YZ
9	2	F-2120	FHCS, 5/16-18 X 3/4", YZ, GR5

ITEM #	QTY	PART #	DESCRIPTION
10	1	F-2122	FHCS, 5/16-18 X 1-1/2", YZ, GR5, FULL THD
11	4	F-2132	NUT, 1/4-20 NYLOC, FLANGED, YZ
12	4	F-2134	HFCS, 1/4-20 X 0.625", YZ, SELF TAPPING
13	1	H-1635	SPRING, EXT, 3/4" OD X 4" OAL
14	2	H-1637	COMPRESSION SPRING, .045 X .420 X 1.25
15	2	H-2921	FLANGE BEARING-0.500"
16	2	H-2924	BRAKE LINK ROD
17	1	H-2953	WLDT, PARK BRAKE

FUEL TANK ASSEMBLY

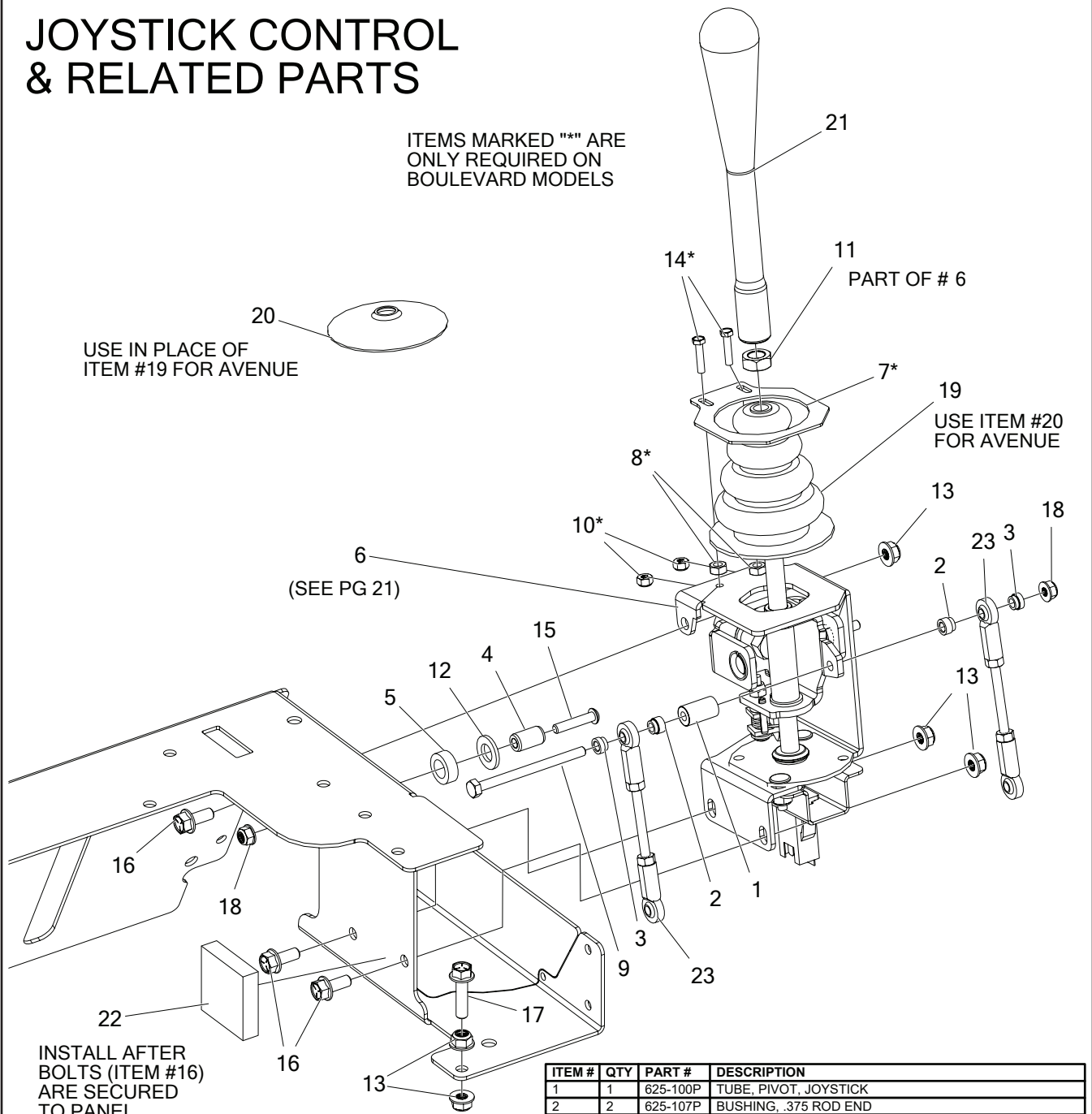


IF A TANK IS REQUIRED IT CAN ONLY
BE PURCHASED AS A COMPLETE ASSEMBLY
(PARTS MARKED "*" ARE INCLUDED IN ASS'Y)

ITEM #	QTY	PART #	DESCRIPTION
1	1	H-1648	FUEL LINE, 1/2" O.D., 1/4" I.D.
2	2	H-1687	1/2 O.D. HOSE SPRING CLAMP
3	1	H-2678	KELCH REMOTE VENT
4	1	H-2679	KELCH REMOTE VENT GROMMET
5	1	H-2697	HOSE, FUEL LINE .188 ID X .406 OD
6	1	H-2698	CLAMP, .406 OD FUEL LINE
7	1	H-2724	ASSEMBLY, FUEL TANK, SMALL
8	1	H-2741	GROMMET, PICK UP TUBE (DAPCO #12240)
9	1	H-2742	PICK UP TUBE (DAPCO INDUSTRIES)
10	1	H-2743	3.50" CARB CAP W/ TETHER
11	1	P-12922	VENDOR SUPPLIED EPA CERT. LABEL

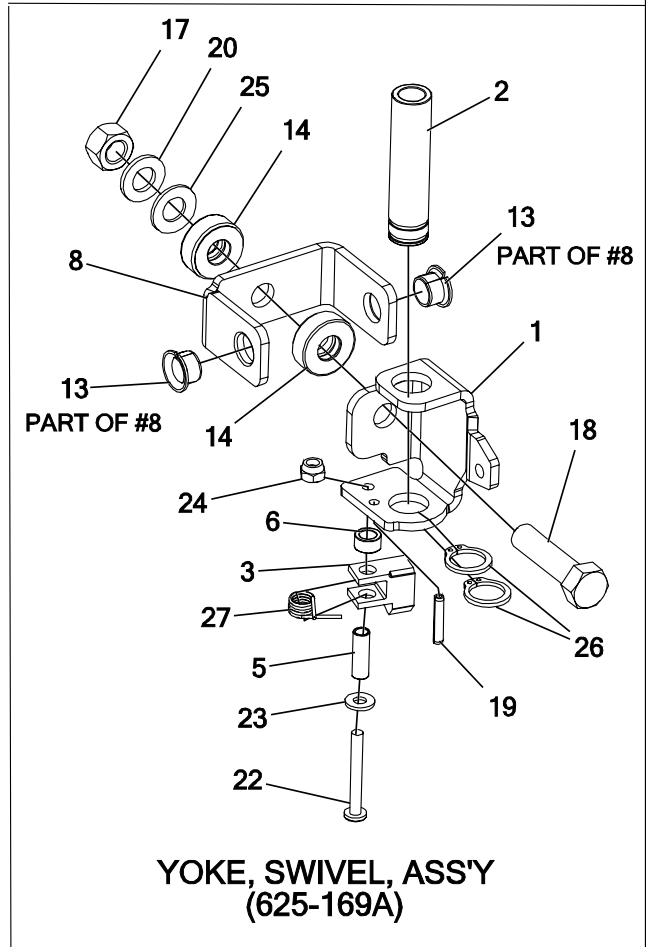
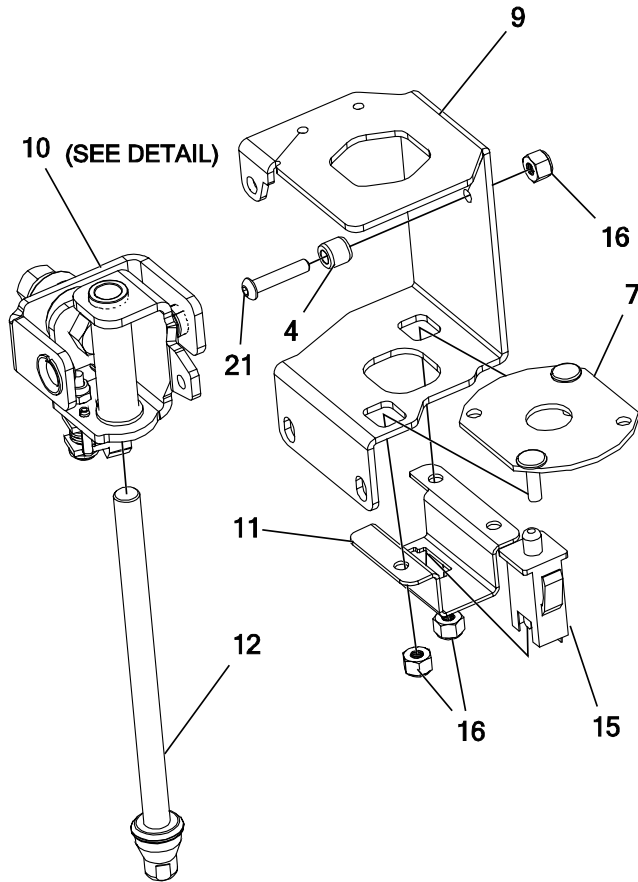
JOYSTICK CONTROL & RELATED PARTS

ITEMS MARKED "*" ARE ONLY REQUIRED ON BOULEVARD MODELS



ITEM #	QTY	PART #	DESCRIPTION
1	1	625-100P	TUBE, PIVOT, JOYSTICK
2	2	625-107P	BUSHING, .375 ROD END
3	2	625-116P	BUSHING, .375 ROD END, SHORT
4	1	625-119P	PIN, PIVOT, JS, LONG
5	1	625-126P	SPACER, JOYSTICK PANEL
6	1	625-171A	JOYSTICK ASS'Y, SHORT
7	1	720-038P	PLT, BOOT RETAINER
8	2	F-1011-01	NUT, HEX, 1/4-20 UNC-2B YELLOW PLATED
9	1	F-1020-01	CAPSCREW, 1/4-20 X 3-1/2", YZ, GR5
10	2	F-1448	LOCKNUT, 10-32 NYLOC YELLOW PLTD
11	1	F-1462	HEX JAM NUT, 1/2-20, CZ
12	1	F-1521	WASHER, 1/2" CUSTOM, YZ
13	5	F-2063	NUT, 5/16-18, NYLOC, FLANGED, YZ
14	2	F-2100	HHMS, 10-32 X 7/8", CZ
15	1	F-2103	SHCS, BUTTON HD, 1/4-20 X 1", CZ
16	3	F-2120	FHCS, 5/16-18 X 3/4", YZ, GR5
17	1	F-2122	FHCS, 5/16-18 X 1-1/4", YZ, GR5, FULL THD
18	2	F-2132	NUT, 1/4-20 NYLOC FLANGED, YZ
19	1	H-1991	JOY STICK BOOT
20	1	H-2947	BOOT, LOW PROFILE
21	1	H-2964	HANDLE, JOYSTICK
22	1	H-2990	WEATHER-RESISTANT NEOPRENE FOAM (ADHESIVE) 1/2"
23	2	H-3025	LINKAGE, UPPER, 1/4-28 X 5

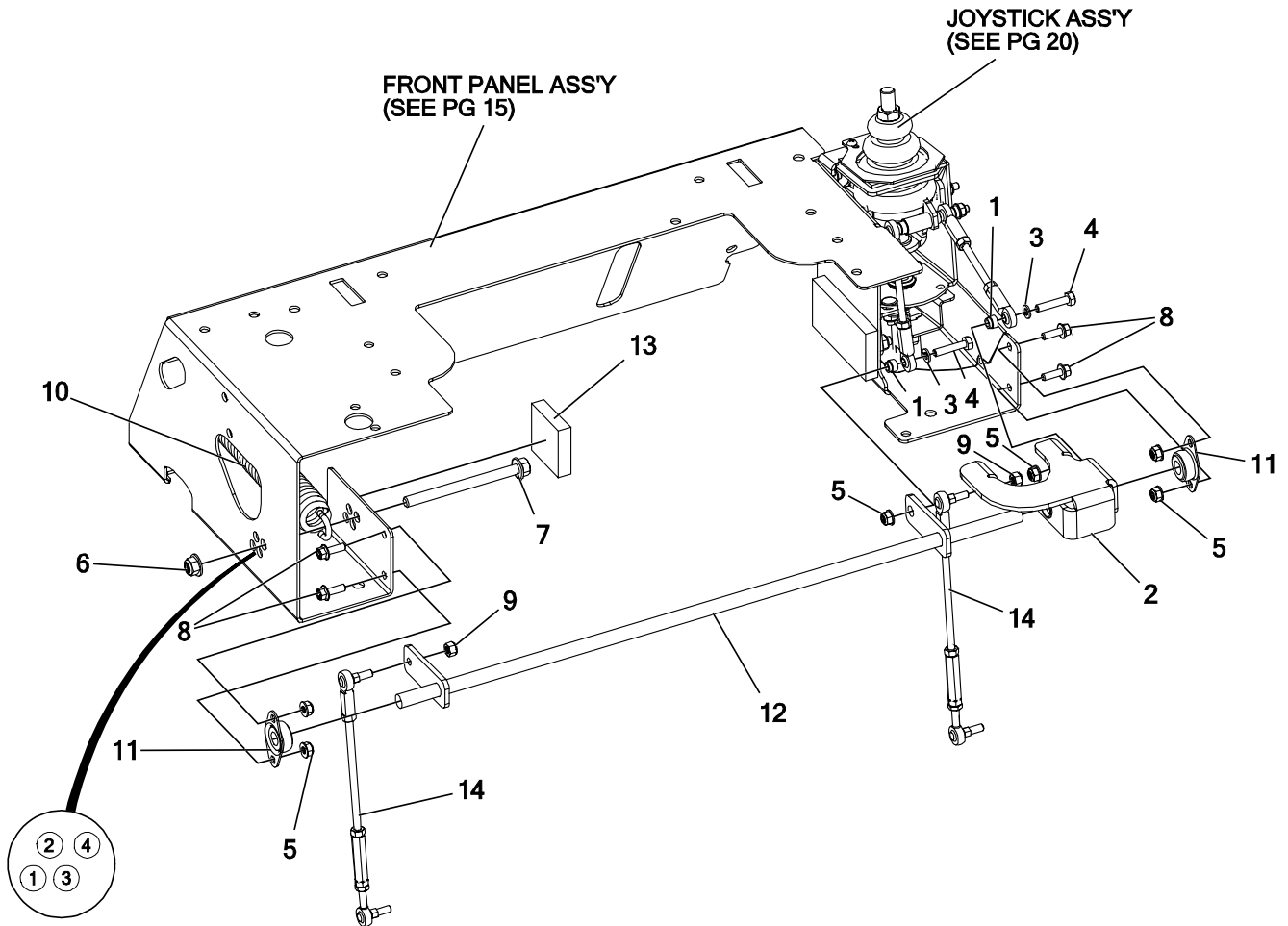
JOYSTICK ASSEMBLY {625-171A}



ITEM #	QTY	PART #	DESCRIPTION
1	1	625-096P	YOKE, SWIVEL, JOYSTICK
2	1	625-099P	TUBE, GUIDE, CONTROL ROD
3	1	625-103P	TAB, CAM DETENT
4	1	625-106P	PIN, PIVOT, JS
5	1	625-124P	TUBE-SPACER, DETENT CAM
6	1	625-125P	SPACER, CAM DETENT
7	1	625-127W	NEUTRAL PLATE WELDMENT
8	1	625-128A	PIVOT ASSEMBLY
9	1	625-154P	HOUSING, JOYSTICK
10	1	625-169A	YOKE, SWIVEL ASSEMBLY
11	1	659-285P	MOUNT, SWITCH
12	1	709-169A	ROD ASSEMBLY, SHORT, 1/2"
13	2	D-3784	BUSHING, DU 1/2 DIA X 3/8 WIDE
14	2	D-3931	THRUST BEARING

ITEM #	QTY	PART #	DESCRIPTION
15	1	E-6474	SWITCH, SNAP MOUNT
16	3	F-1005-01	NUT, 1/4-20 w/NYLOC, YZ
17	1	F-1005-05	NUT, 1/2-13, CENTERLOCK, YZ, GR5
18	1	F-1293	HHCS, 1/2-13 X 2", YZ, GR5
19	1	F-1503	PIN, SPIROL 3/16 DIA X 1 X .010 THK
20	1	F-1521	WASHER, 1/2" CUSTOM, YZ
21	1	F-2103	SHCS, BUTTON HD, 1/4-20 X 1", CZ
22	1	F-2135	SCREW, PANHEAD, PHILLIPS #12-24 X 1.75 CZ
23	1	F-2136	WASHER, FLAT, #12 PLAIN, CZ
24	1	F-2137	NUT, #12-24, NYLOCK
25	1	H-2704	SPRING, BELLEVILLE, .50 X 1 X .073
26	2	H-2705	RING, RETAINING, .75 EXT.
27	1	H-2710	SPRING, DETENT, JOYSTICK

JOYSTICK ASSEMBLY MOUNTING & RELATED PARTS

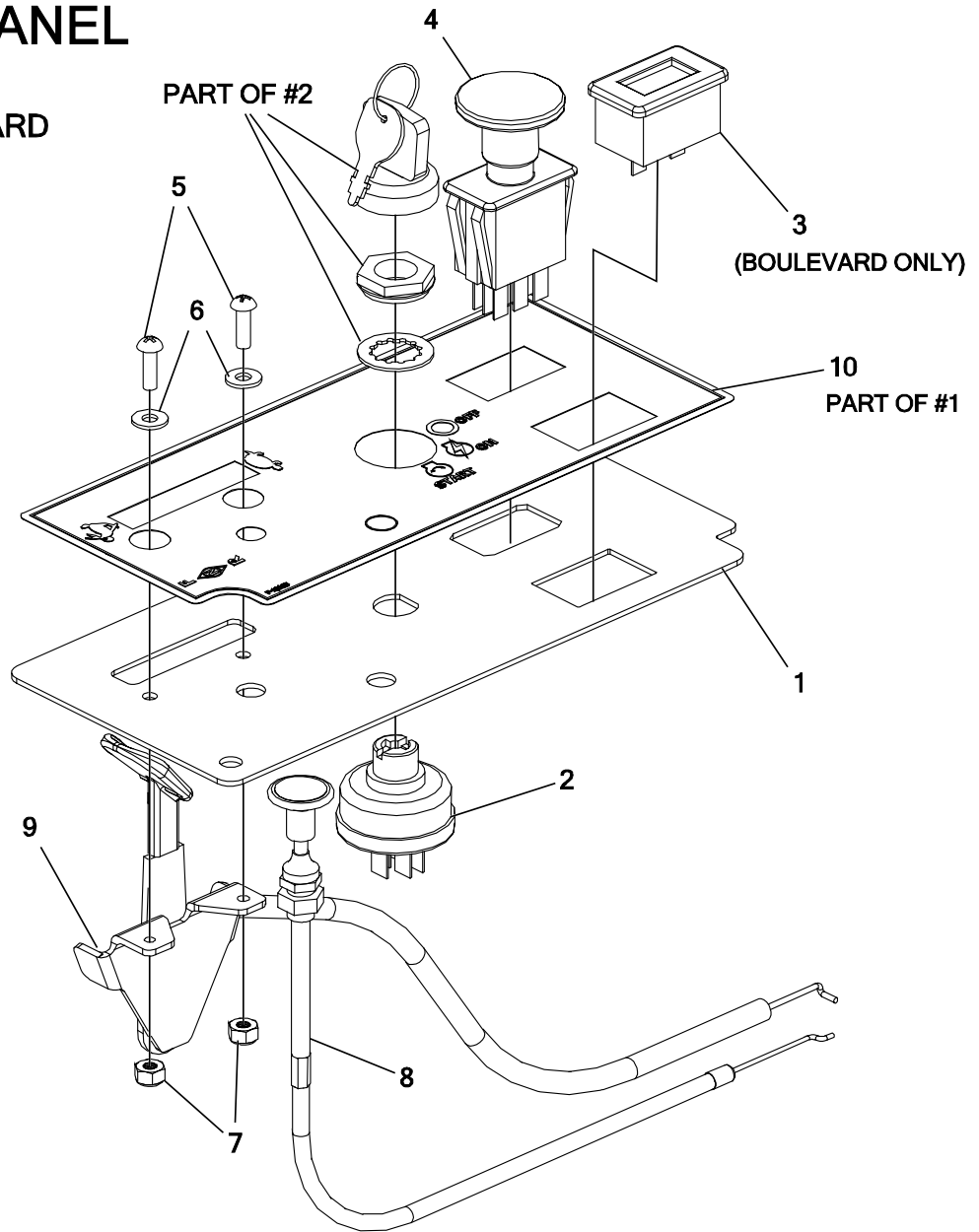


USE HOLE #1 FOR 42"
 USE HOLE #2 FOR 48"
 USE HOLE #3 FOR 54"
 USE HOLE #4 FOR 60"
 FOR DECK ASSIST SPRING #10
 BOLT #7 AND NUT #6

ITEM #	QTY	PART #	DESCRIPTION
1	2	625-107P	BUSHING, .375 ROD END
2	1	714-084A	ASSEMBLY, PIVOT PLATE
3	2	F-1019-01	WASHER, LOCK, 1/4, YZ
4	2	F-1539	HHCS, 1/4-20 X 1-1/4", YZ, GR5
5	6	F-2132	NUT, 1/4-20 NYLOC, FLANGED, YZ
6	1	F-2151	NUT, 3/8-16 NYLOC, FLANGED, YZ
7	1	F-2160	FHCS, 3/8-16 X 4-1/2", YZ, GR5
8	4	F-2162	FHCS, 1/4-20 X 3/4", YZ, GR5
9	2	F-2202	NUT, 1/4-20, NYLOC, YZ
10	1	H-2900	SPRING, DECK COUNTER BALANCE
11	2	H-2921	FLANGE BEARING-0.500"
12	1	H-2954	WLDT, JS PIVOT SHAFT
13	1	H-2990	FOAM PAD, 1/2 X 2" x 2"
14	2	H-3021	LINKAGE, CONTROL LOWER

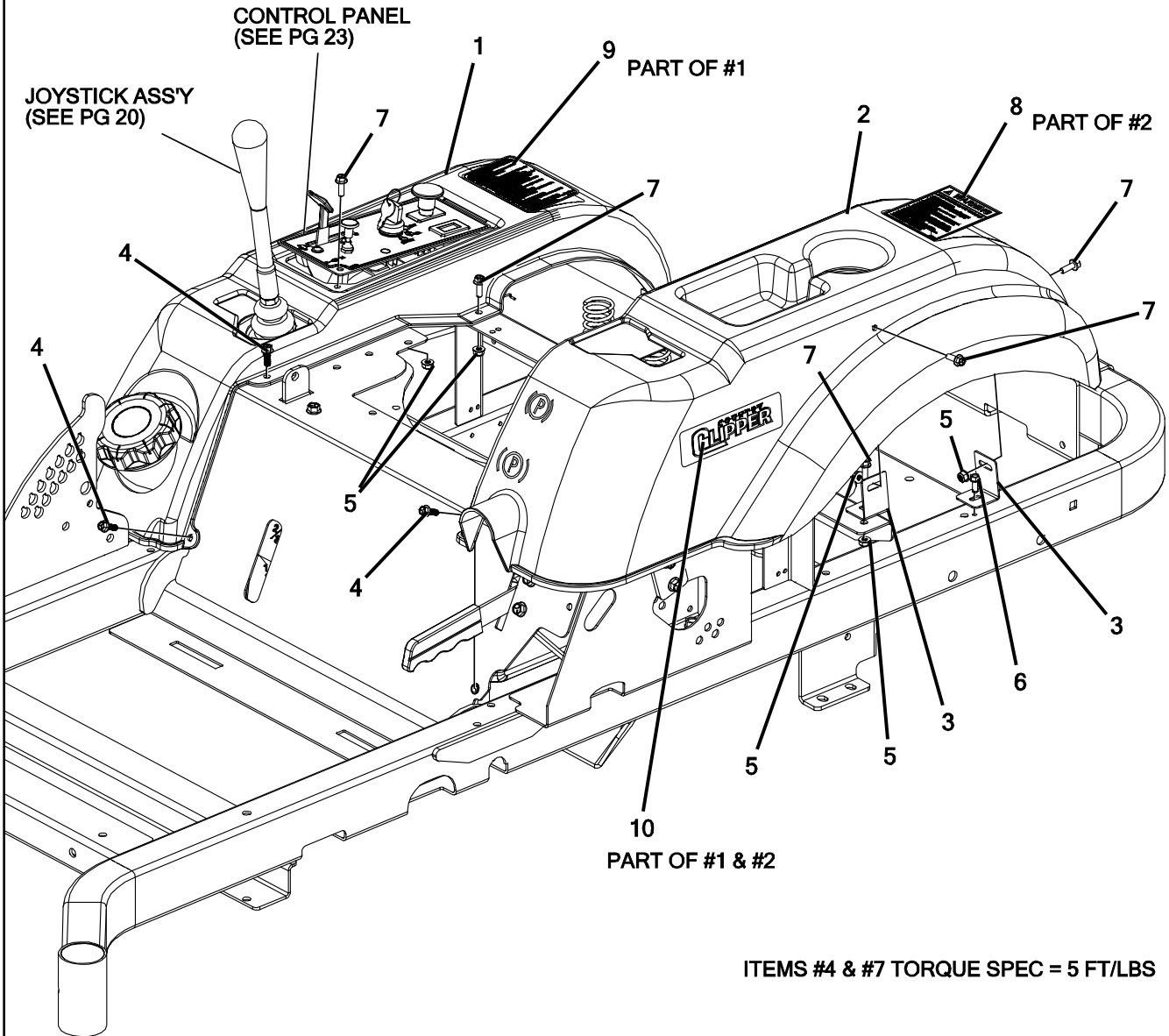
CONTROL PANEL

714-027A - AVENUE
714-031A - BOULEVARD



ITEM #	QTY	PART #	DESCRIPTION
1	1	714-320P	PLATE, CONTROL MOUNT
2	1	E-5873	KEY ASSEMBLY, 3 POSITION
3	1	E-5878	HOUR METER
4	1	E-6403	PTO SWITCH
5	2	F-1022-26	MACHINE SCREW,RND, 10-32 X 5/8, SLOTTED, CZ
6	2	F-1071	WASHER, FLAT #10, ZINC PLATED #10 SAE FLAT WASHER
7	2	F-1448	LOCKNUT, 10-32 NYLOC YELLOW PLTD
8	1	H-2287	CHOKE CABLE, 43-1/2"
9	1	H-2611	THROTTLE CABLE, 57"
10	1	P-13195	DECAL, CONTROL PANEL, AVE & BLVD

FENDER ASSEMBLY & RELATED PARTS

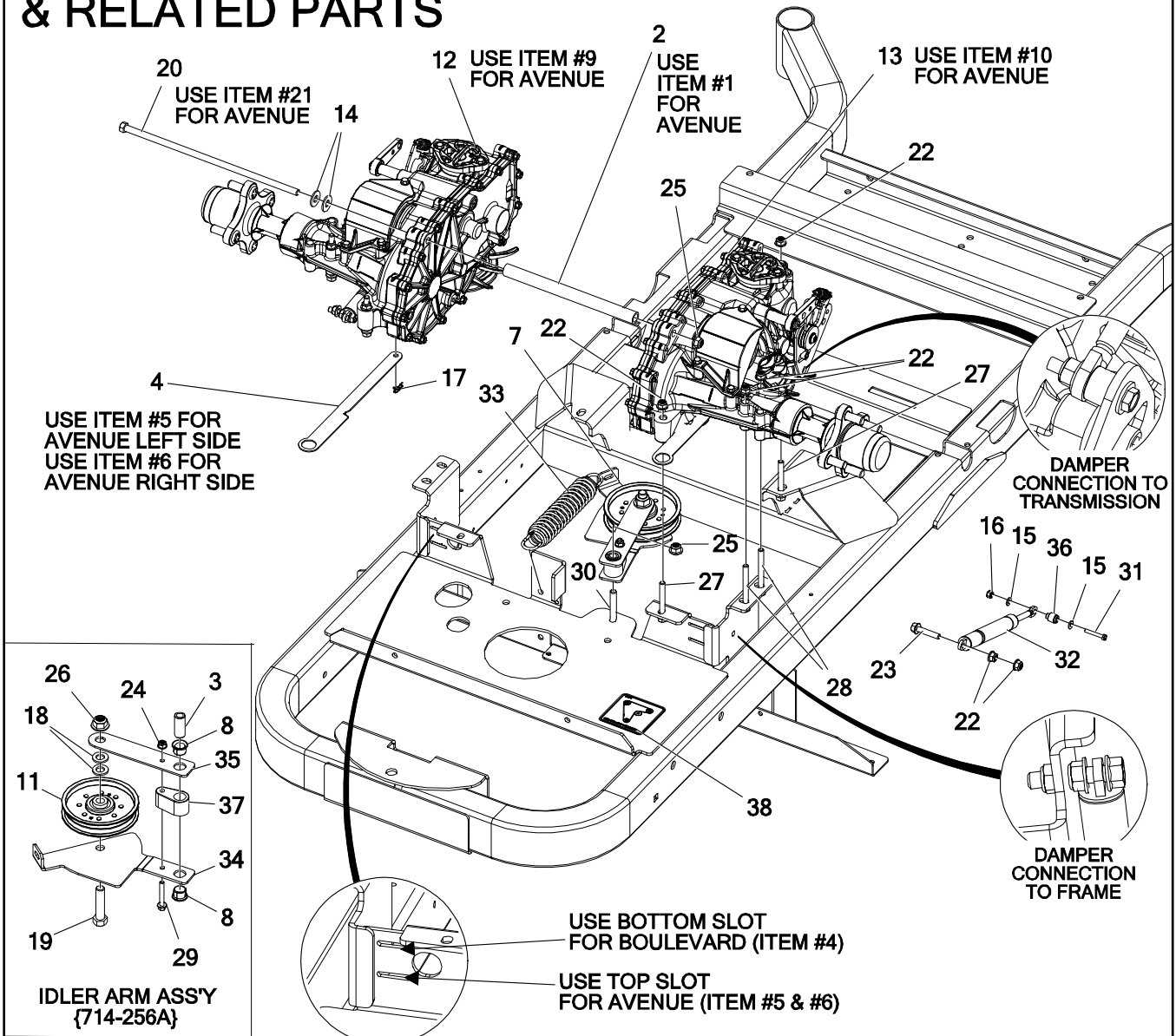


ITEMS #4 & #7 TORQUE SPEC = 5 FT/LBS

ITEM #	QTY	PART #	DESCRIPTION
1	1	714-037A	FENDER, RH w/DECAL
2	1	714-038A	FENDER, LH w/DECAL
3	4	714-323P	TAB, FENDER MOUNT
4	4	F-2119	FHCS, 1/4-20 X 3/4", YZ, GR5, LOCK PATCH
5	9	F-2132	NUT, 1/4-20 NYLOC, FLANGED, YZ
6	2	F-2134	HFCS, 1/4-20 X 0.625", YZ, SELF TAPPING
7	9	F-2162	FHCS, 1/4-20 X 3/4", YZ, GR5
8	1	P-11370	DECAL, WARNING
9	1	P-13188	DECAL, INSTRUCTIONS
10	2	P-13311	DECAL, LOGO, CHROME w/BLK, SM

TRANSMISSION ASSEMBLY & RELATED PARTS

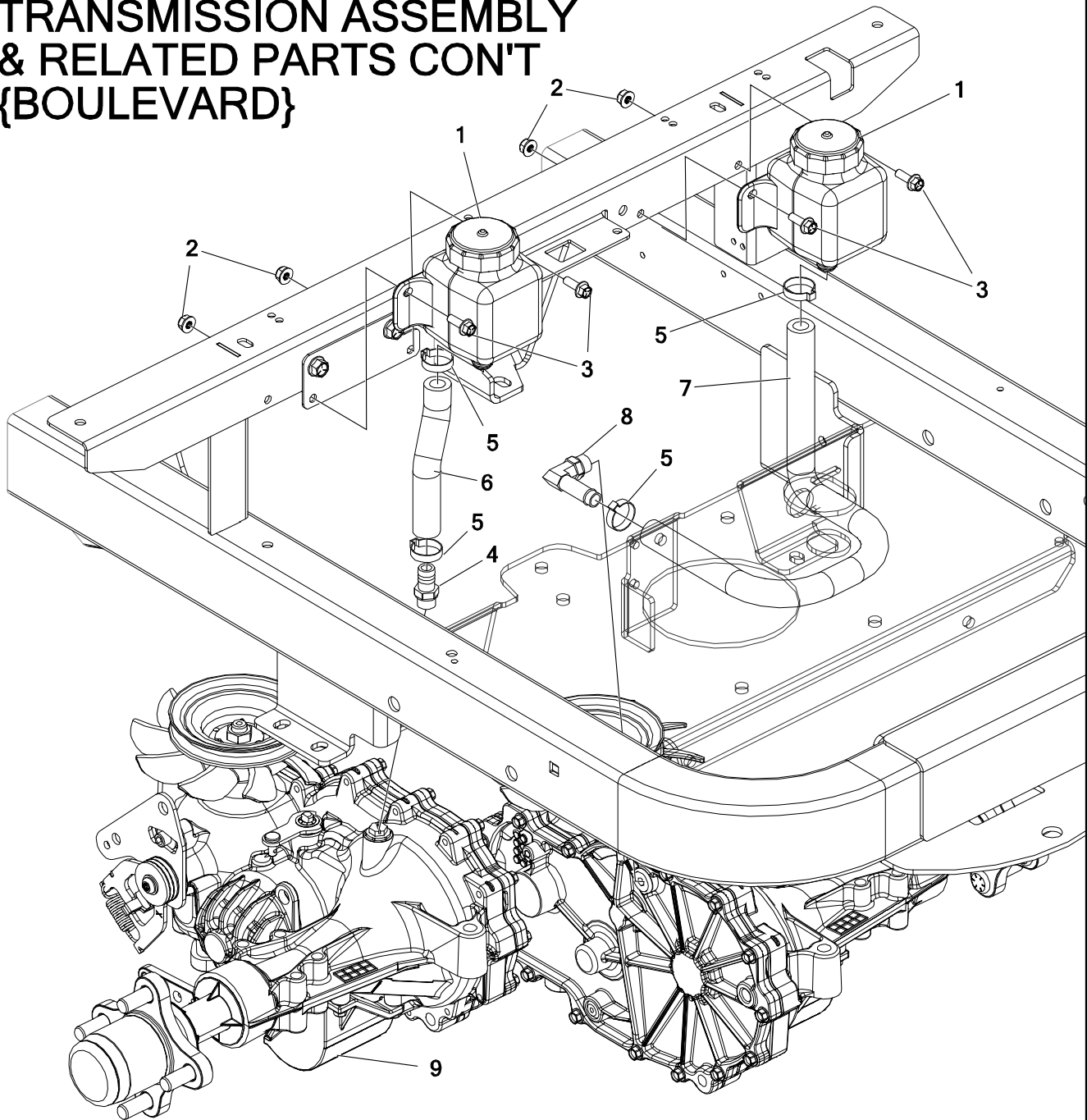
(LOOKING AT BOTTOM)



ITEM #	QTY	PART #	DESCRIPTION
1	1	659-120P	HYDRO BRACE
2	1	659-173P	HYDRO BRACE (BOULEVARD)
3	1	714-058P	PIN, IDLER PIVOT
4	2	714-098P	TAB, DUMP VALVE (BOULEVARD)
5	1	714-168P	TAB, LCM DUMP VALVE, L
6	1	714-169P	TAB, LCM DUMP VALVE, R
7	1	714-256A	ASSY, IDLER ARM
8	2	D-3730	BUSHING, DU 5/8 DIA X 1/2 LG
9	1	D-3783-01	TRANSAXLE, EZT, RH
10	1	D-3783-02	TRANSAXLE, EZT, LH
11	1	D-3924	PULLEY, FLAT IDLER, 4.25 OD, NTN, DBL INSERT
12	1	D-3954-01	TRANSAXLE, ZT-2800 w/RTN, RH (BOULEVARD)
13	1	D-3954-02	TRANSAXLE, ZT-2800 w/RTN, LH (BOULEVARD)
14	2	F-1009-03	WASHER, FLAT, STD, STEEL 3/8" W SERIES
15	4	F-1071	WASHER, FLAT #10, ZINC PLATED
16	2	F-1448	LOCKNUT, 10-32 NYLOC YELLOW PLTD
17	2	F-1492	RUE RING, 5/16
18	2	F-1521	WASHER, 1/2" CUSTOM, YZ
19	1	F-1664	HHCS, 1/2-13 X 2-1/4", YZ, GR5
20	1	F-2007	HHCS, 3/8-16 X 12", YZ, GR6 (BOULEVARD)

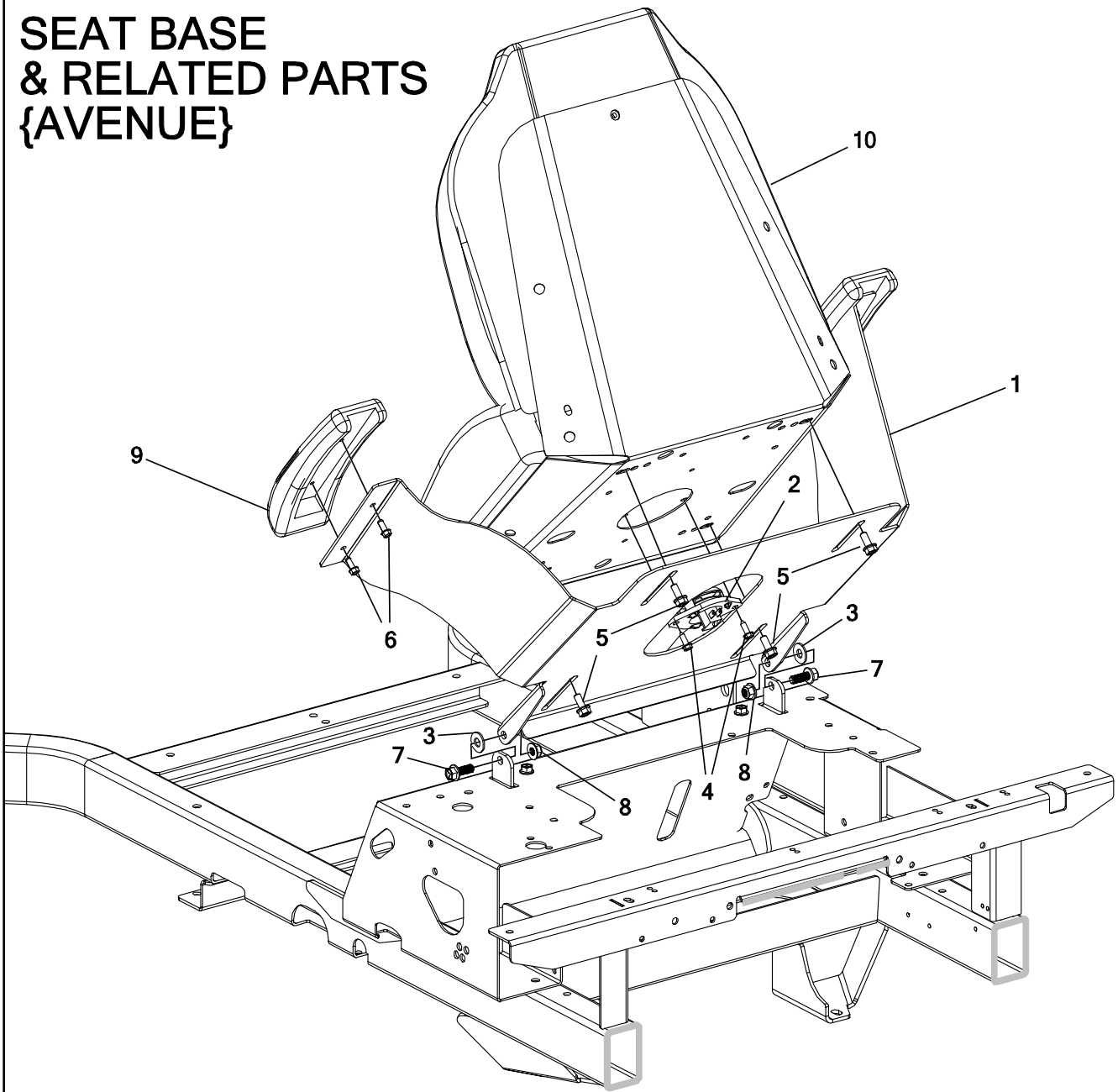
ITEM #	QTY	PART #	DESCRIPTION
21	1	F-2048	HHCS, 3/8-16 X 12", YZ, GR5
22	12	F-2063	NUT, 5/16-18, NYLOC, FLANGED, YZ
23	2	F-2129	FHCS, 5/16-18 X 1-1/2", YZ, GR5
24	1	F-2132	NUT, 1/4-20 NYLOC, FLANGED, YZ
25	2	F-2151	NUT, 3/8-16 NYLOC, FLANGED, YZ
26	1	F-2152	NUT, 1/2-13 NYLOC, FLANGED, YZ
27	4	F-2177	FHCS, 5/16-18 X 2-1/2", YZ, GR5
28	4	F-2178	FHCS, 5/16-18 X 3", YZ, GR5
29	1	F-2216	FHCS, 1/4-20 X 1-3/4", YZ, GR5
30	1	F-2218	FHCS, 3/8-16 X 2-1/4", YZ, GR5
31	2	F-2221	HHMS, 10-32 X 1-1/4"
32	2	H-2896	DAMPER-300 N-AVM
33	1	H-2907	SPRING, 5.43 X 1-1/2", TAPERED ENDS
34	1	H-2942	PLT, IDLER ARM, TOP
35	1	H-2943	PLT, IDLER ARM, BOTTOM
36	2	H-2961	BUSHING, DAMPLER MOUNT
37	1	H-2962	SPACER, IDLER
38	1	P-12918	DECAL, HYDRO BELT ROUTING

TRANSMISSION ASSEMBLY & RELATED PARTS CON'T {BOULEVARD}



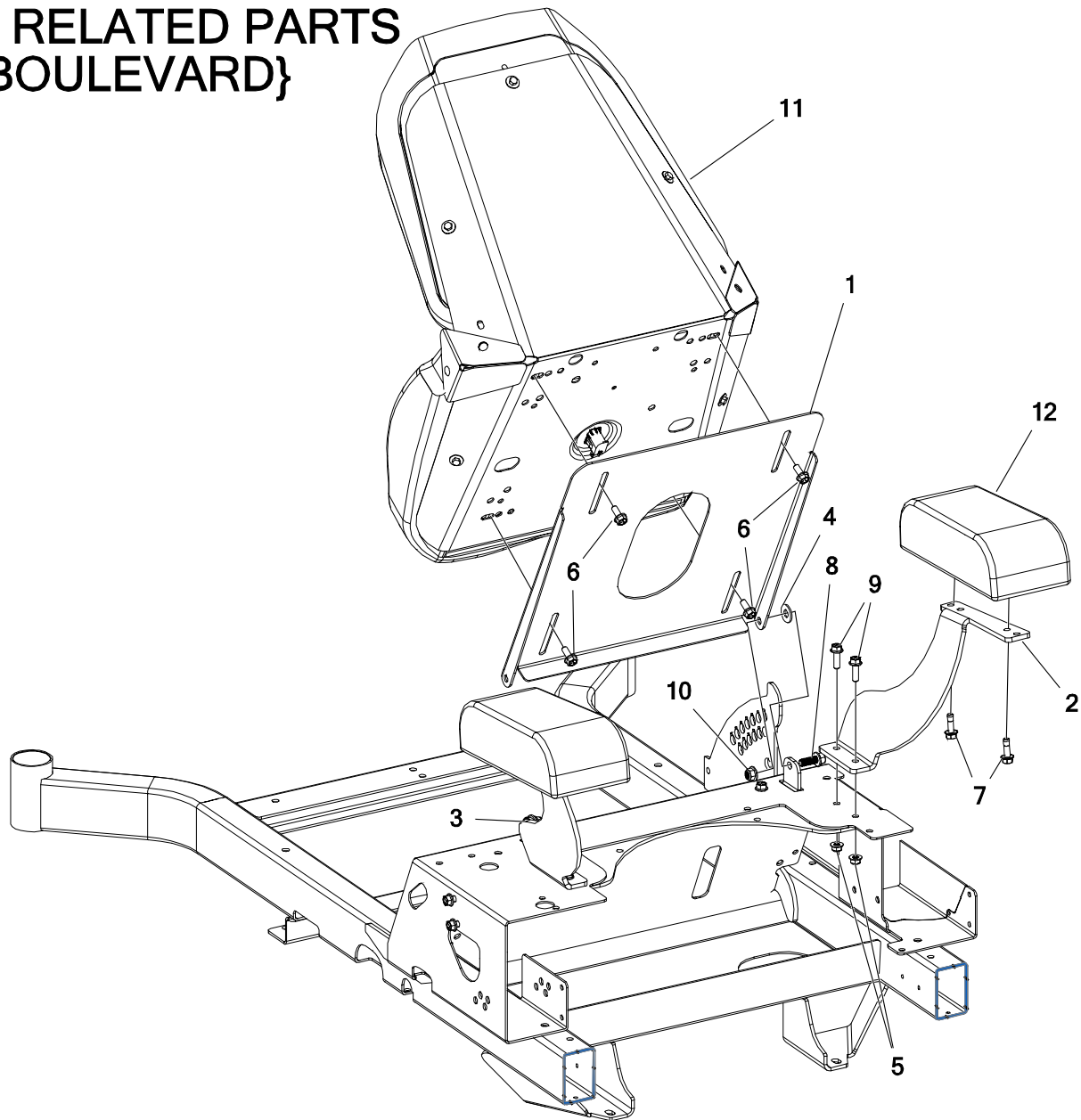
ITEM #	QTY	PART #	DESCRIPTION
1	2	D-3791	TANK, HYDRO, ASSY, SAMLL
2	4	F-2132	NUT, 1/4-20 NYLOC, FLANGED, YZ
3	4	F-2162	FHCS, 1/4-20 X 3/4", YZ, GR5
4	1	H-2517	VENT TUBE ADAPTER
5	4	H-2535	7/8" CLAMP
6	1	H-2549	1/2" X 5" OIL HOSE
7	1	H-2761	HOSE, 1/2" X 19"
8	1	H-2762	VENT TUBE ADAPTER
9	1	H-2567	TRANSAXLE OIL FILTER

SEAT BASE & RELATED PARTS {AVENUE}



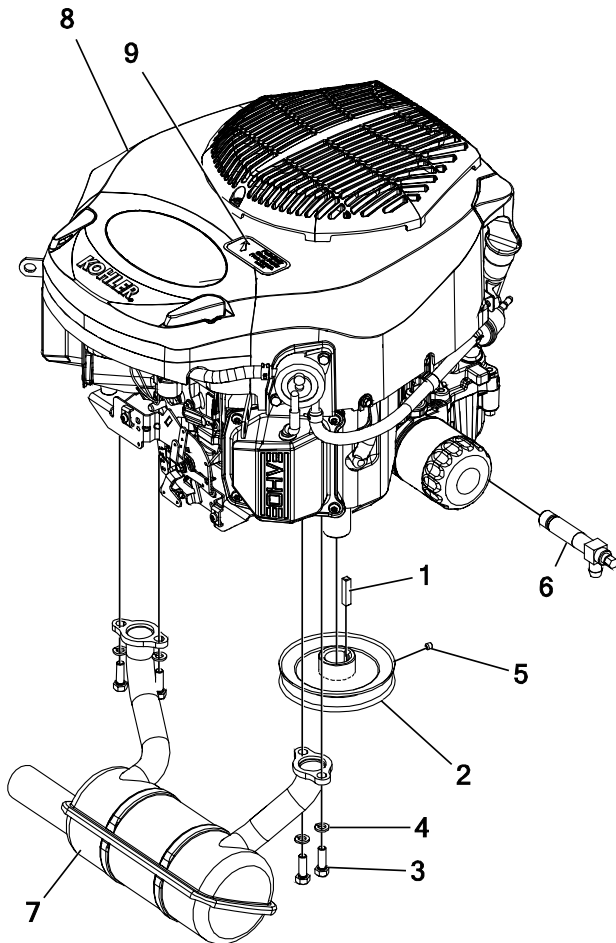
ITEM #	QTY	PART #	DESCRIPTION
1	1	714-315P	PAN, SEAT MOUNT (AVE)
2	1	E-6374	SEAT SWITCH, NC
3	2	F-1009-03	WASHER, FLAT, STD, STEEL 3/8" W SERIES; .438 ID (+.015-.005) 1.000 OD (+.030-.007) .064 TO .104 THK 1/98 YELLOW
4	2	F-1785	SCREW, HX WASHER HD #14X3/4, CZ
5	4	F-2120	FHCS, 5/16-18 X 3/4", YZ, GR5
6	4	F-2134	HFCS, 1/4-20 X 0.625", YZ, SELF TAPPING
7	2	F-2141	FHCS, 3/8-16 X 1", YZ, GR5
8	2	F-2151	NUT, 3/8-16 NYLOC, FLANGED, YZ
9	2	H-2753	PAD, ARM REST, MOLDED
10	1	H-2974	SEAT, MILSCO

SEAT BASE & RELATED PARTS {BOULEVARD}



ITEM #	QTY	PART #	DESCRIPTION
1	1	714-026P	PAN, SEAT MOUNT
2	1	720-017P	MOUNT PLATE, ARM REST, R
3	1	720-018P	MOUNT PLT, ARM REST, L
4	2	F-1009-03	WASHER, FLAT, STD, STEEL 3/8"
5	2	F-2063	NUT, 5/16-18, NYLOC, FLANGED
6	4	F-2120	FHCS, 5/16-18 X 3/4", YZ, GR5
7	4	F-2121	FHCS, 5/16-18 X 1", LOCK PATCH, YZ, GR5
8	2	F-2141	FHCS, 3/8-16 X 1", YZ, GR5
9	4	F-2148	FHCS, 5/16-18 X 1", YZ, GR5
10	2	F-2151	NUT, 3/8-16 NYLOC, FLANGED
11	1	H-2604	SEAT ASS'Y w/N.C. SWITCH
12	2	H-2763	PAD, ARM REST, SEAT KING

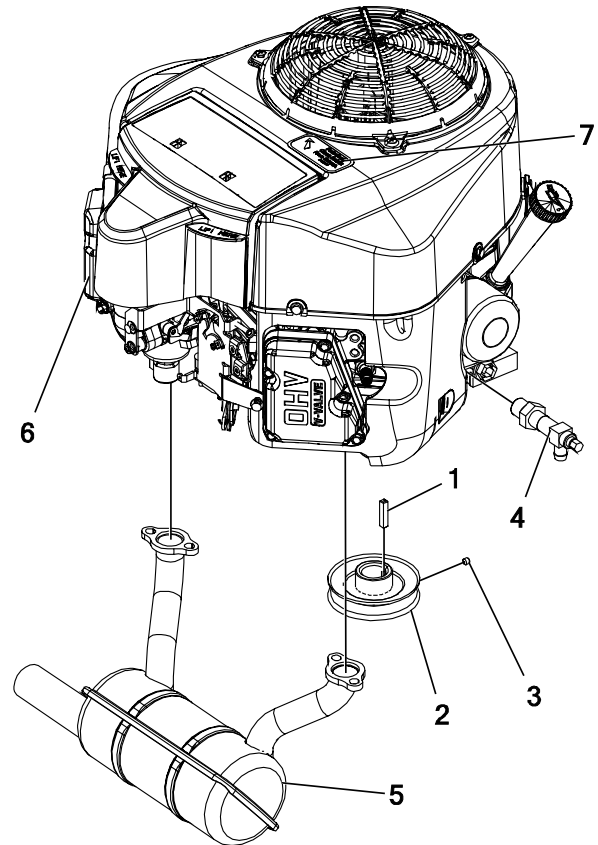
ENGINES



KOHLER 23HP KT730

(USE THROTTLE CABLE H-2611
& CHOKE CABLE H-2287)

ITEM #	QTY	PART #	DESCRIPTION
1	1	621-113P	SQUARE KEY 1/4 X 1/4 X 1-1/4
2	1	D-3967	PULLEY, MOTOR, 4.51" O.D.
3	4	F-1015-15	CAPSCREW
4	4	F-1019-02	LOCKWASHER
5	1	F-1228	SET SCREW, SOCKET, 1/4-20 X 1/4", W/NYLOC
6	1	H-2589	OIL DRAIN VALVE (KOHLER)
7	1	H-2888	MUFFLER, KOHLER, COMPACT
8	1	M-5403	ENGINE, KOHLER, 23HP KT730
9	1	P-10077-11	DECAL, "PERIODIACALLY CLEAN"



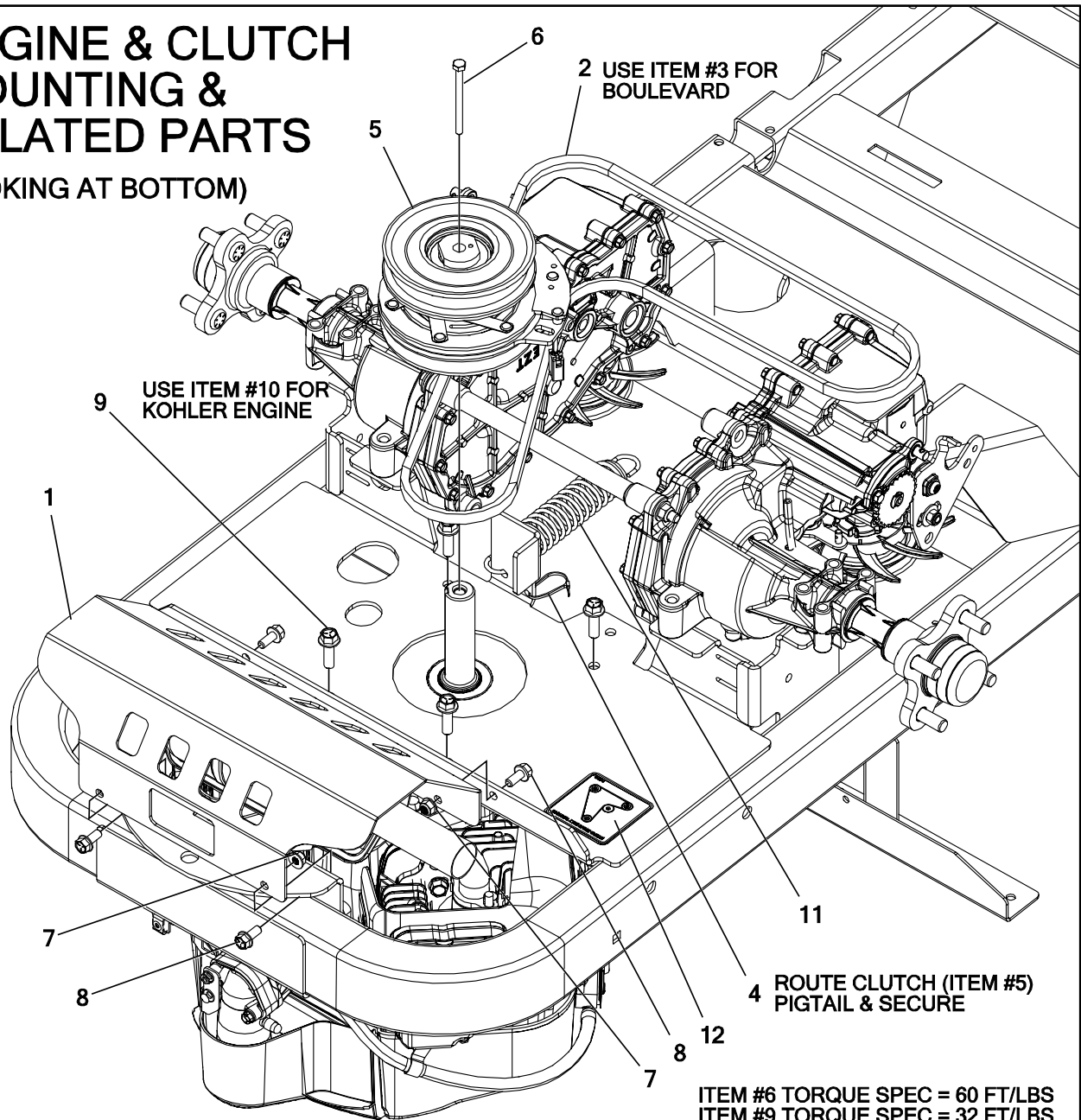
KAWASAKI 18HP FR600V

(USE THROTTLE CABLE H-2610
& CHOKE CABLE H-2287)

ITEM #	QTY	PART #	DESCRIPTION
1	1	621-113P	SQUARE KEY 1/4 X 1/4 X 1-1/4
2	1	D-3966	PULLEY, MOTOR, 3.53" O.D.
3	1	F-1228	SET SCREW, SOCKET, 1/4-20 X 1/4", W/NYLOC
4	1	H-2590	OIL DRAIN VALVE (KAWASAKI)
5	1	H-2806	MUFFLER, COMPACT, KAWASAKI, FR600
6	1	M-5402	ENGINE, KAWASAKI 18HP, FR600V
7	1	P-10077-11	DECAL, "PERIODIACALLY CLEAN"

ENGINE & CLUTCH MOUNTING & RELATED PARTS

(LOOKING AT BOTTOM)



2 USE ITEM #3 FOR BOULEVARD

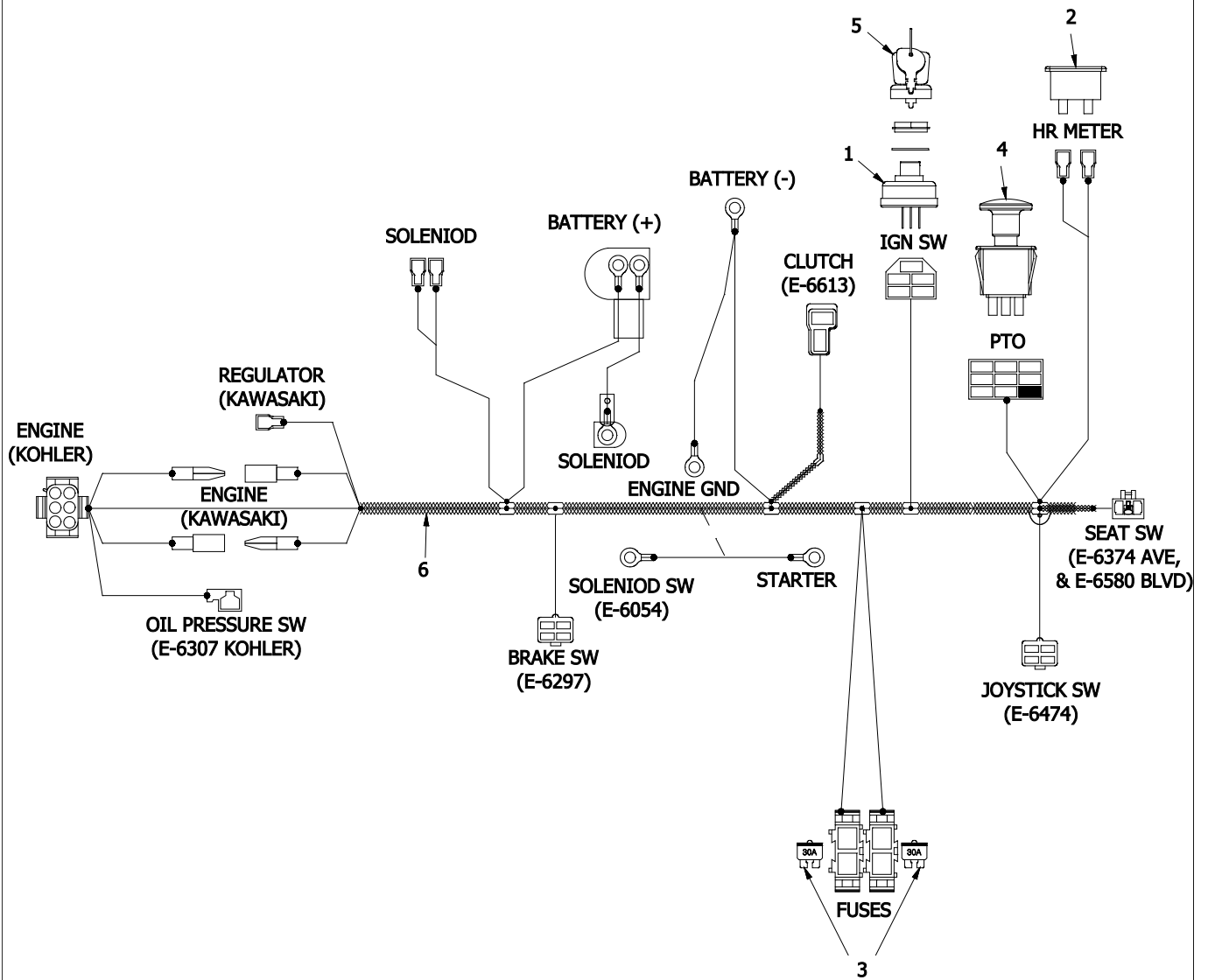
9 USE ITEM #10 FOR KOHLER ENGINE

4 ROUTE CLUTCH (ITEM #5) PIGTAIL & SECURE

ITEM #6 TORQUE SPEC = 60 FT/LBS
 ITEM #9 TORQUE SPEC = 32 FT/LBS
 ITEM #10 TORQUE SPEC = 42 FT/LB

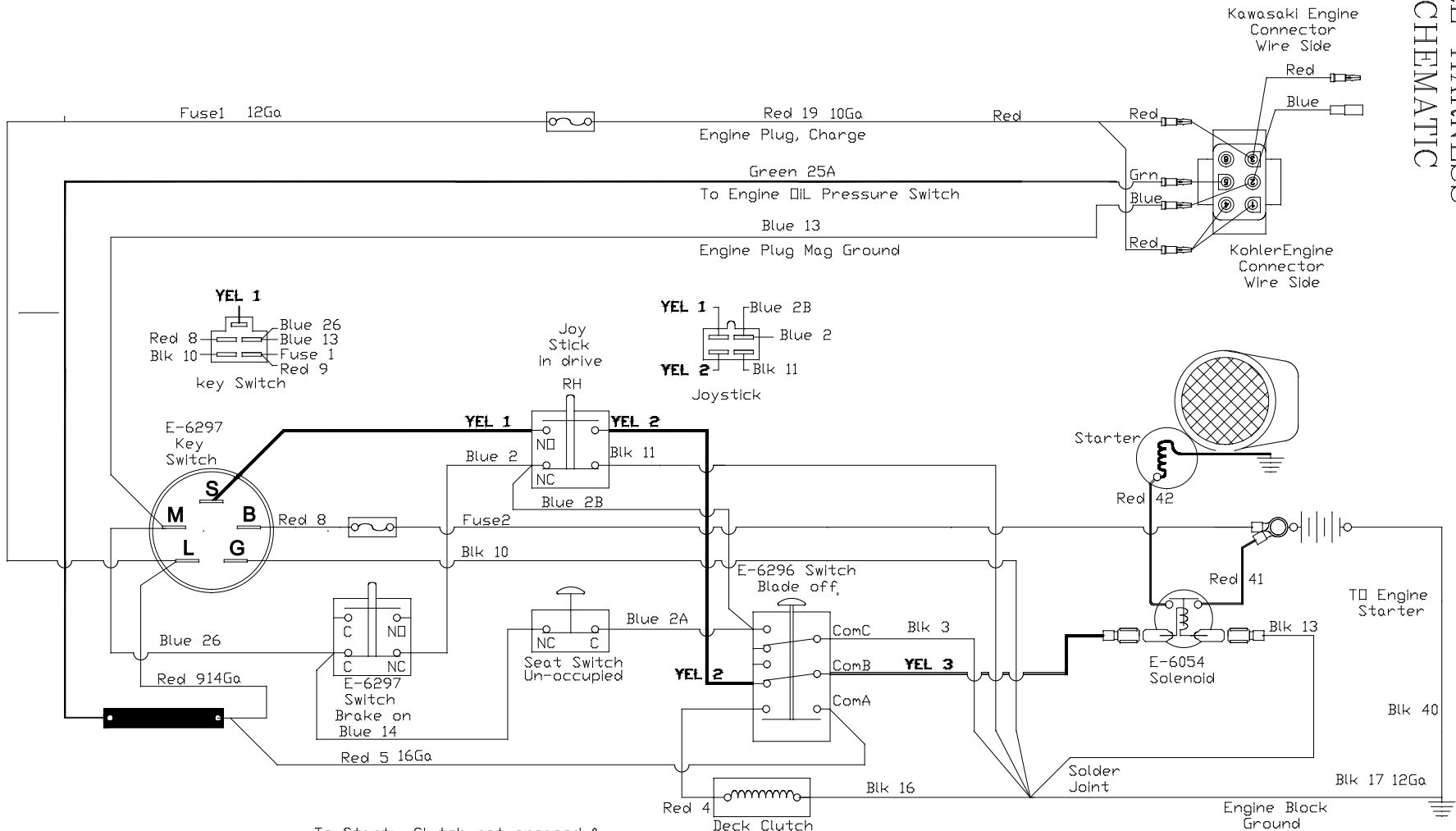
ITEM #	QTY	PART #	DESCRIPTION
1	1	714-398P	GUARD, MUFFLER
2	1	D-3885	V-BELT, AP64 RAW EDGE LAMINATED
3	1	D-3891	V-BELT, AP65 RAW EDGE LAMINATED
4	1	E-5842	WIRE TIE
5	1	E-6613	MS CLUTCH, 1" BORE, 125FT-LB, 4.4 A DIA, EXT PULLEY, #5219-187
6	1	F-1766	HHCS, 1/4-20 X 3-1/4", YZ, GR5
7	4	F-2063	NUT, 5/16-18, NYLOC, FLANGED, YZ
8	4	F-2120	FHCS, 5/16-18 X 3/4", YZ, GR5
9	4	F-2125	FHCS, 3/8-16 X 1-1/4", YZ, GR5
10	4	F-2238	HFCS, 3/8-16 X 1-1/4", CZ, THD FORMING
11	1	H-2907	SPRING, 5.43 X 1-1/2", TAPERED ENDS
12	1	P-12918	DECAL, HYDRO BELT ROUTING

WIRE HARNESS & RELATED PARTS



ITEM #	PART #	DESCRIPTION
1	E-5873	KEY SWITCH (INCLUDES #5)
2	E-5878	HOUR METER
3	E-6207	FUSE, #ATC-30
4	E-6403	PTO SWITCH
5	E-6445	KEY SET (INCLUDED IN #1)
6	E-6600	WIRE HARNESS, AVENUE & BOULEVARD

WIRE HARNESS SCHEMATIC



POSITION	CIRCUIT "MAKE"
1. OFF	G + M
2. RUN	B + L
3. START	B + L + S

To Start: Clutch not engaged & Steering Levers in Neutral
 Engine Kill: If Steering levers in drive & brake is on or seat un-occupied
 If Clutch is on and seat is not occupied

Start Circuit Yellow
 Safety Circuit Blue
 Power Circuit Red
 Ground Circuit Black
 Hr Mtr Circuit Green

Repair Parts Manual



Country Clipper Division
Shivvers Manufacturing Inc.
613 W. English St.
Corydon, IA 50060-0467
Ph. 641-872-2544
Fax 641-872-1593