

Repair Parts Manual

COUNTRY CLIPPER® ZERO TURN MOWER

AVENUE

150/A100

BOULEVARD

250/B200

Congratulations for buying a **Country Clipper** product. Your **Country Clipper** Zero Turn Radius Riding Mower was designed and built to provide long and trouble free service. Keep in mind that it, like any other mechanical device, can be potentially dangerous if used improperly, and hazard control and accident prevention are dependent upon the awareness, concern, prudence, and proper training of personnel involved in the operation, transport, maintenance, and storage of the equipment. Study this manual and pay special attention to the important Safety Precautions on pages 3-5. Following these instructions will help you continue to enjoy the trouble-free performance expected of the **Country Clipper** product.

COUNTRY CLIPPER

AVENUE-A100

BOULEVARD-B200

ZERO TURN RADIUS MOWER

TABLE OF CONTENTS

SECTION 1 – MOWER DECKS AND RELATED PARTS

1. 42" DECK ASSEMBLY
2. 48" DECK ASSEMBLY
3. 54" DECK ASSEMBLY
4. 60" DECK ASSEMBLY
5. DECK SPINDLE ASSEMBLY
6. DOUBLE IDLER & RELATED PARTS (42" DECK)
7. DOUBLE IDLER & RELATED PARTS (48" DECK)
8. DOUBLE IDLER & RELATED PARTS (54" & 60" DECK)
9. FIXED IDLERS & RELATED PARTS
10. LIFT HANDLE ASSEMBLY & RELATED PARTS
11. DECK SCISSOR & RELATED PARTS

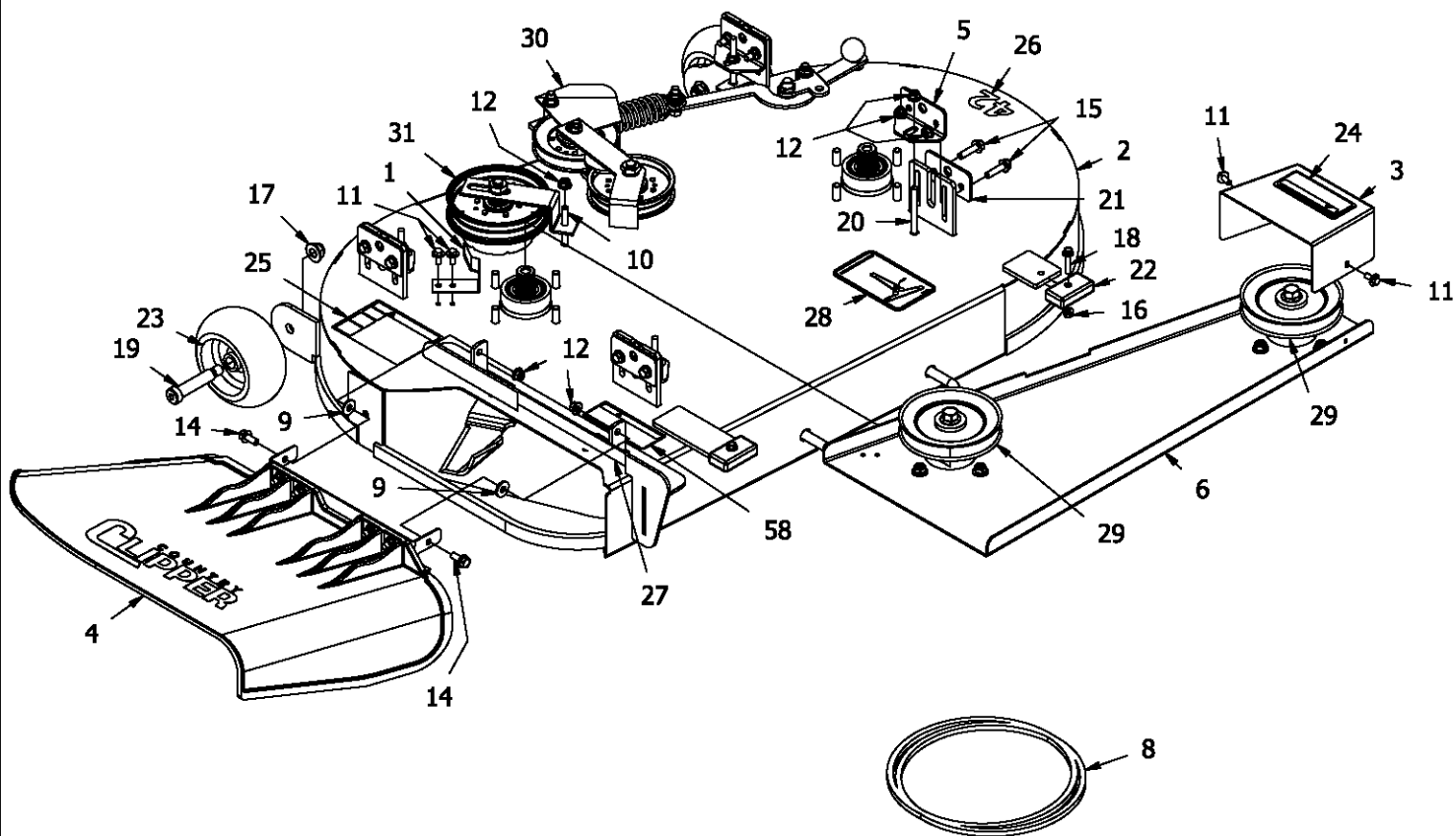
SECTION 2 – TRACTOR FRAME AND RELATED PARTS

12. FOOT DECK & FRONT TIRE ASSEMBLY (AVENUE)
13. FOOT DECK & FRONT TIRE ASSEMBLY (BOULEVARD)
14. FRONT PANEL ASSEMBLY & RELATED PARTS
15. FRONT PANEL ASSEMBLY & RELATED PARTS (CON'T)
16. BRAKES & BATTERY BOX ASSEMBLY

SECTION 3 – TRACTOR DRIVE AND RELATED PARTS

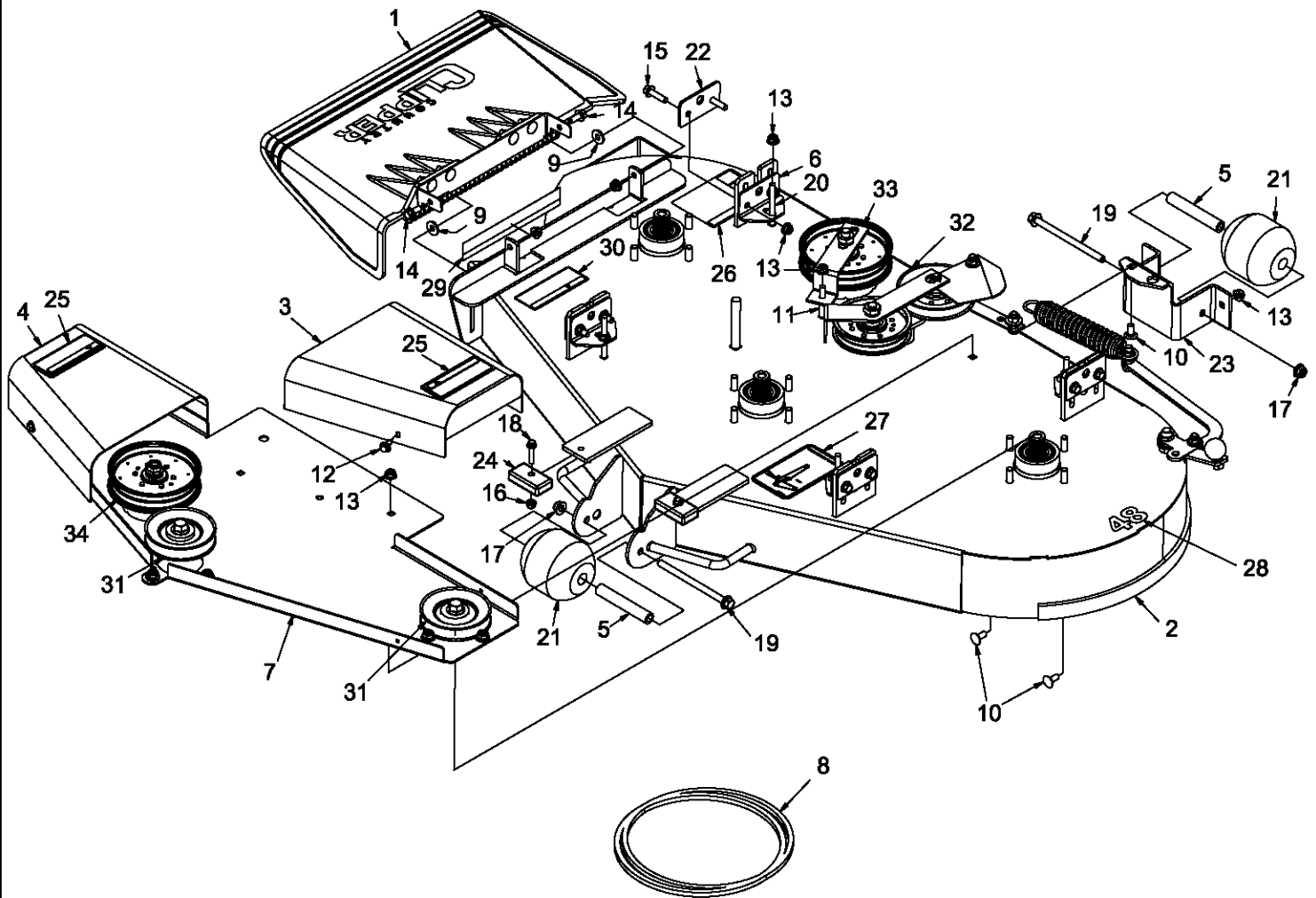
17. FUEL TANK ASSEMBLY
18. JOYSTICK CONTROL & RELATED PARTS
19. JOYSTICK ASSEMBLY
20. FRONT PANEL & JOYSTICK ASSEMBLY MOUNTING & RELATED PARTS
21. FENDER ASSEMBLY & RELATED PARTS
22. TRANSMISSION ASSEMBLY & RELATED PARTS (AVENUE & BOULEVARD)
23. TRANSMISSION ASSEMBLY & RELATED PARTS (BOULEVARD)
24. SEAT BASE & RELATED PARTS
25. ENGINES
26. ENGINE & CLUTCH MOUNTING & RELATED PARTS
27. WIRE HARNESS & RELATED PARTS
28. WIRE HARNESS SCHEMATIC

42" DECK ASSEMBLY {714A-002A}



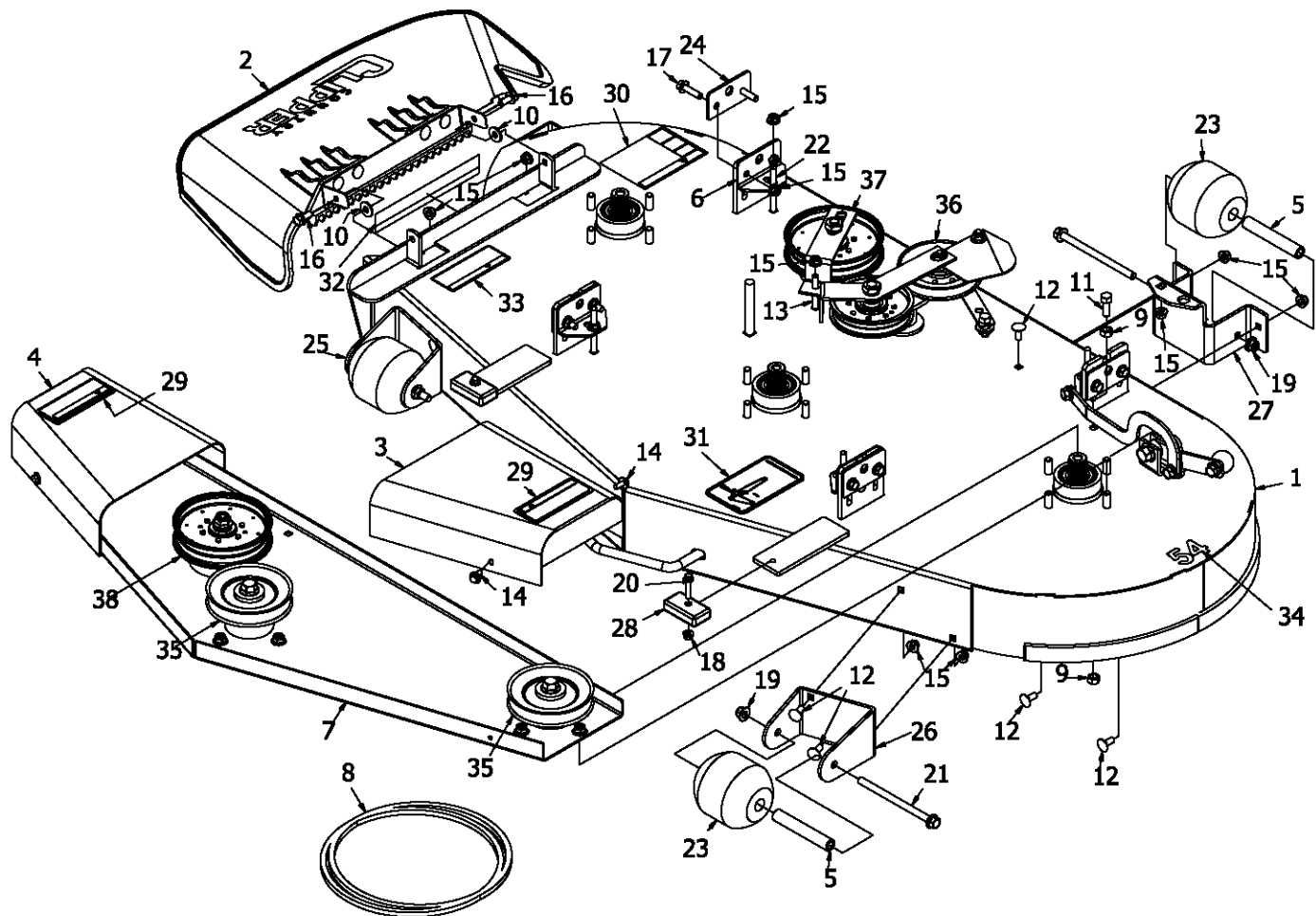
ITEM #	PART #	QTY	DESCRIPTION	ITEM #	PART #	QTY	DESCRIPTION
1	700-058P	1	GUIDE, BELT 41"	17	F-2152	2	NUT, 1/2-13 NYLOC, FLANGED
2	714-005A	1	42" DECK w/DECALS	18	F-2182	2	FHCS, 1/4-20 X 1-1/4", GR5, YZ
3	714-009A	1	PULLEY COVER w/DECALS	19	F-2232	2	SHCS, 5/8" X 2-1/2", CZ
4	714-010A	1	DISCHARGE CHUTE ASS'Y	20	F-2233	4	5/16-18 X 2 1/4" CARRIAGE BOLT,
5	714-179P	4	PLATE, ADJUSTMENT W/ FLANGE	21	H-2932	4	PLATE, ADJUSTMENT
6	714A-005P	1	DECK STIFFENER, 42"	22	H-2959	2	WEAR PAD
7	D-3917	2	SPINDLE ASSY	23	H-2968	2	ANTI-SCALP WHEEL, 5" X 2-1/2"
8	D-3948	1	BELT, BANDO, B-122	24	P-10935	1	DECAL, WARNING
9	F-1009-02	2	5/16" FLAT WASHER	25	P-10941	1	DECAL "DANGER ROTATING BLADES"
10	F-1893	1	HHCS, 5/16-8 X 2-1/2	26	P-11949	1	DECAL, DECK SIZE, 42
11	F-2030	4	1/4 X 5/8 SELF TAPPING CAPSCREW	27	P-12496	1	DECAL, MISSING CHUTE
12	F-2063	19	NUT, 5/16-18 NYLOC, FLANGED	28	P-12712	1	DECAL WRANGLER BELT ROUTING
13	F-2073	2	HHCS, 5/8-11 X 1.50, GR8, YZ	29	-----	2	SPINDLE ASS'Y (SEE pg.5)
14	F-2120	2	FHCS, 5/16-18 X 0.75, YZ, GR5	30	-----	1	DOUBLE IDLER ASS'Y (SEE pg.6)
15	F-2122	8	FHCS, 5/16-18 X 1.25, YZ, GR5	31	-----	1	FIXED IDLER ASS'Y (SEE pg.9)
16	F-2132	2	NUT, 1/4-20 NYLOC, FLANGED				

48" DECK ASSEMBLY {714B-002A}



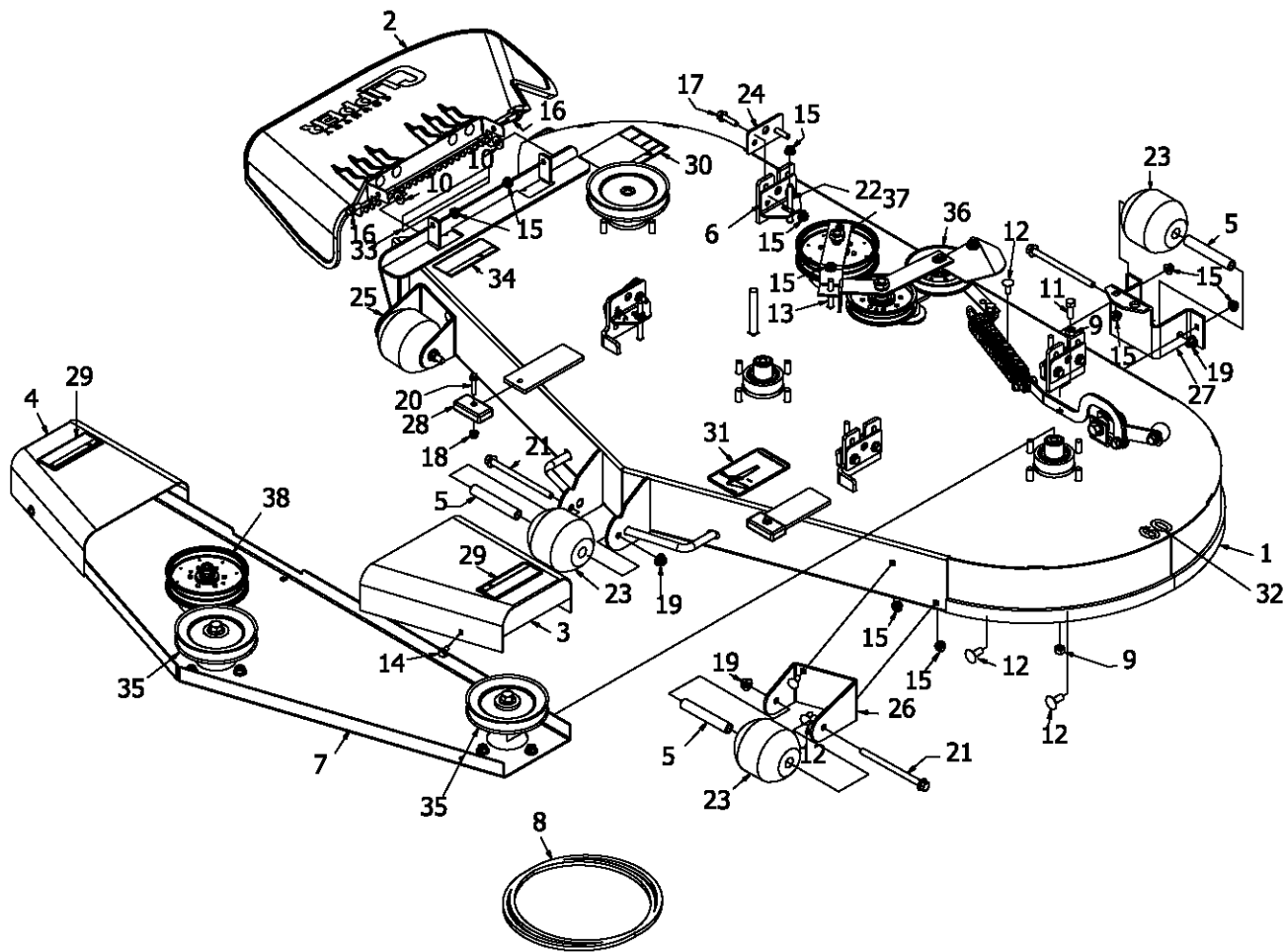
ITEM #	PART #	QTY	DESCRIPTION	ITEM #	PART #	QTY	DESCRIPTION
1	643-111A	1	CHUTE ASS'Y	18	F-2182	2	FHCS, 1/4-20 X 1-1/4", GR5, YZ
2	714-006A	1	48" DECK w/DECALS	19	F-2222	3	FHCS, 3/8-16 X 5-1/2", YZ, GR5
3	714-018A	1	PULLEY COVER w/DECALS, TRIM	20	F-2233	4	5/16-18 X 2 1/4" CARRIAGE BOLT,
4	714-019A	1	PULLEY COVER w/DECALS, DISCHARGE	21	H-2768	3	ROLLER, 3-3/4 DIA. X 4"
5	714-133P	3	BUSHING, ROLLER BRACKET	22	H-2932	4	PLATE, ADJUSTMENT
6	714-179P	4	PLATE, ADJUSTMENT W/ FLANGE	23	H-2940	2	REAR ROLLER BRACKET
7	714B-005P	1	DECK STIFFENER, 48"	24	H-2959	2	WEAR PAD
8	D-3949	1	BELT, BANDO, B-144	25	P-10935	2	DECAL, WARNING
9	F-1009-02	2	5/16" FLAT WASHER	26	P-10941	1	DECAL "DANGER ROTATING BLADES"
10	F-1671	5	5/16-18 X 3/4" CARRIAGE BOLT	27	P-11932	1	DECAL, JAZEE DECK BELT ROUTING
11	F-1707	1	5/16-18 X 2 1/4" CARRIAGE BOLT,	28	P-11950	1	DECAL, DECK SIZE, 48
12	F-2030	4	1/4 X 5/8 SELF TAPPING CAPSCREW	29	P-12496	1	DECAL, MISSING CHUTE
13	F-2063	24	NUT, 5/16-18 NYLOC, FLANGED	30	P-12706	1	WARNING DECAL, DISCHARGE CHUTE
14	F-2120	2	FHCS, 5/16-18 X 0.75, YZ, GR5	31	-----	3	SPINDLE ASS'Y (SEE pg.5)
15	F-2122	8	FHCS, 5/16-18 X 1.25, YZ, GR5	32	-----	1	DOUBLE IDLER ASS'Y (SEE pg.7)
16	F-2132	2	NUT, 1/4-20 NYLOC, FLANGED	33	-----	1	FIXED IDLER ASS'Y, R (SEE pg.9)
17	F-2151	20	NUT, 3/8-16 NYLOC, FLANGED	34	-----	1	FIXED IDLER ASS'Y, F (SEE pg.9)

54" DECK ASSEMBLY {714C-002A}



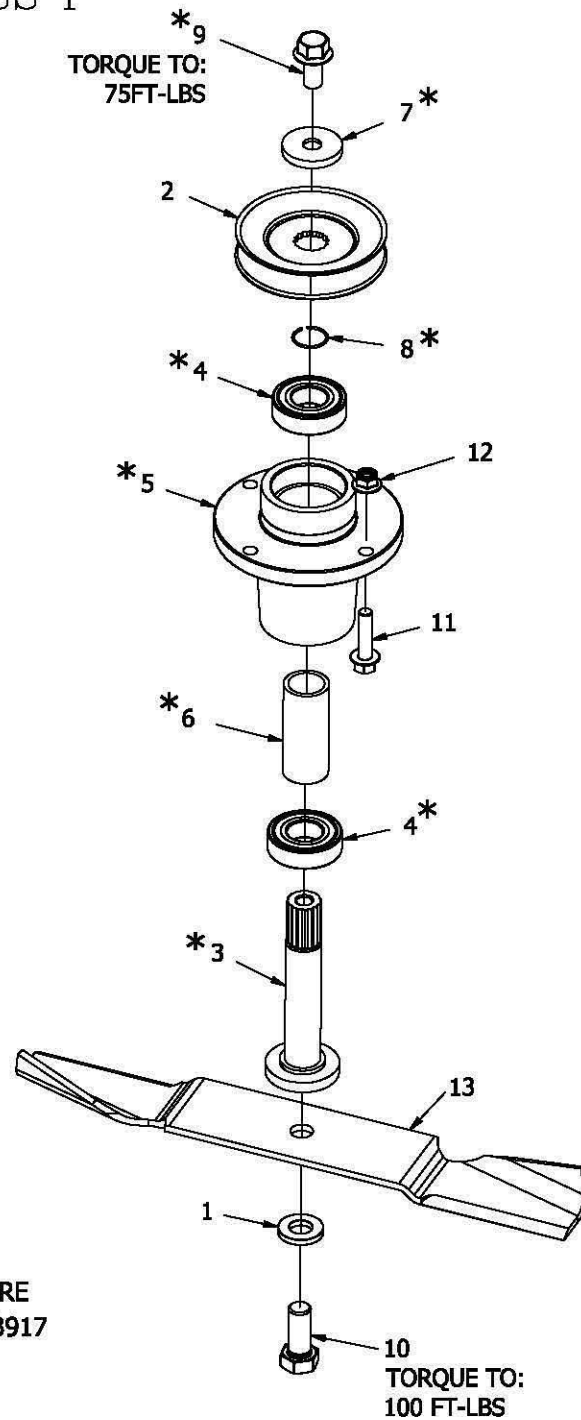
ITEM #	PART #	QTY	DESCRIPTION	ITEM #	PART #	QTY	DESCRIPTION
1	714-007A	1	54" DECK w/DECALS	20	F-2182	2	FHCS, 1/4-20 X 1-1/4", GR5, YZ
2	714-010A	1	DISCHARGE CHUTE ASS'Y	21	F-2222	4	FHCS, 3/8-16 X 5-1/2", YZ, GR5
3	714-018A	1	PULLEY COVER w/DECALS, TRIM	22	F-2233	4	5/16-18 X 2 1/4" CARRIAGE BOLT,
4	714-019A	1	PULLEY COVER w/DECALS, DISCHARGE	23	H-2768	4	ROLLER, 3-3/4 DIA. X 4"
5	714-133P	4	BUSHING, ROLLER BRACKET	24	H-2932	4	PLATE, ADJUSTMENT
6	714-179P	4	PLATE, ADJUSTMENT W/ FLANGE	25	H-2938	1	PLATE, ROLLER BRACKET
7	714C-005P	1	DECK STIFFENER, 54"	26	H-2939	1	PLATE, ROLLER BRACKET
8	D-3950	1	BELT, BANDO, B-154	27	H-2940	2	REAR ROLLER BRACKET
9	F-1005-03	6	3/8-16 STOVER NUT	28	H-2959	2	WEAR PAD
10	F-1009-02	2	5/16" FLAT WASHER	29	P-10935	2	DECAL, WARNING
11	F-1394	3	HHCS, 3/8-16 x 1"	30	P-10941	1	DECAL "DANGER ROTATING BLADES"
12	F-1671	10	5/16-18 X 3/4" CARRIAGE BOLT	31	P-11932	1	DECAL, JAZEE DECK BELT ROUTING
13	F-1707	1	5/16-18 X 2 1/4" CARRIAGE BOLT,	32	P-12496	1	DECAL, MISSING CHUTE
14	F-2030	4	1/4 X 5/8 SELF TAPPING CAPSCREW	33	P-12706	1	WARNING DECAL, DISCHARGE CHUTE
15	F-2063	29	NUT, 5/16-18 NYLOC, FLANGED	34	P-13131	1	DECAL, 54
16	F-2120	2	FHCS, 5/16-18 X 0.75, YZ, GR5	35	-----	3	SPINDLE ASS'Y (SEE pg.5)
17	F-2122	8	FHCS, 5/16-18 X 1.25, YZ, GR5	36	-----	1	DOUBLE IDLER ASS'Y (SEE pg.8)
18	F-2132	2	NUT, 1/4-20 NYLOC, FLANGED	37	-----	1	FIXED IDLER ASS'Y, R (SEE pg.9)
19	F-2151	21	NUT, 3/8-16 NYLOC, FLANGED	38	-----	1	FIXED IDLER ASS'Y, F (SEE pg.9)

60" DECK ASSEMBLY {714D-002A}



ITEM #	PART #	QTY	DESCRIPTION	ITEM #	PART #	QTY	DESCRIPTION
1	714-008A	1	60" DECK w/DECALS	20	F-2182	2	FHCS, 1/4-20 X 1-1/4", GR5, YZ
2	714-010A	1	DISCHARGE CHUTE ASS'Y	21	F-2222	5	FHCS, 3/8-16 X 5-1/2", YZ, GR5
3	714-018A	1	PULLEY COVER w/DECALS, TRIM	22	F-2233	4	5/16-18 X 2 1/4" CARRIAGE BOLT,
4	714-019A	1	PULLEY COVER w/DECALS, DISCHARGE	23	H-2768	5	ROLLER, 3-3/4 DIA. X 4"
5	714-133P	5	BUSHING, ROLLER BRACKET	24	H-2932	4	PLATE, ADJUSTMENT
6	714-179P	4	PLATE, ADJUSTMENT W/ FLANGE	25	H-2938	1	PLATE, ROLLER BRACKET
7	714D-005P	1	DECK STIFFENER, 60"	26	H-2939	1	PLATE, ROLLER BRACKET
8	D-3951	1	BELT, BANDO, B-166	27	H-2940	2	REAR ROLLER BRACKET
9	F-1005-03	6	3/8-16 STOVER NUT	28	H-2959	2	WEAR PAD
10	F-1009-02	2	5/16" FLAT WASHER	29	P-10935	2	DECAL, WARNING
11	F-1394	3	HHCS, 3/8-16 X 1"	30	P-10941	1	DECAL "DANGER ROTATING BLADES"
12	F-1671	10	5/16-18 X 3/4" CARRIAGE BOLT	31	P-11932	1	DECAL, JAZEE DECK BELT ROUTING
13	F-1707	1	5/16-18 X 2 1/4" CARRIAGE BOLT,	32	P-11952	1	DECAL, DECK SIZE, 60
14	F-2030	4	1/4 X 5/8 SELF TAPPING CAPSCREW	33	P-12496	1	DECAL, MISSING CHUTE
15	F-2063	29	NUT, 5/16-18 NYLOC, FLANGED	34	P-12706	1	WARNING DECAL, DISCHARGE CHUTE
16	F-2120	2	FHCS, 5/16-18 X 0.75, YZ, GR5	35	-----	3	SPINDLE ASS'Y (SEE pg.5)
17	F-2122	8	FHCS, 5/16-18 X 1.25, YZ, GR5	36	-----	1	DOUBLE IDLER ASS'Y (SEE pg.8)
18	F-2132	2	NUT, 1/4-20 NYLOC, FLANGED	37	-----	1	FIXED IDLER ASS'Y, R (SEE pg.9)
19	F-2151	22	NUT, 3/8-16 NYLOC, FLANGED	38	-----	1	FIXED IDLER ASS'Y, F (SEE pg.9)

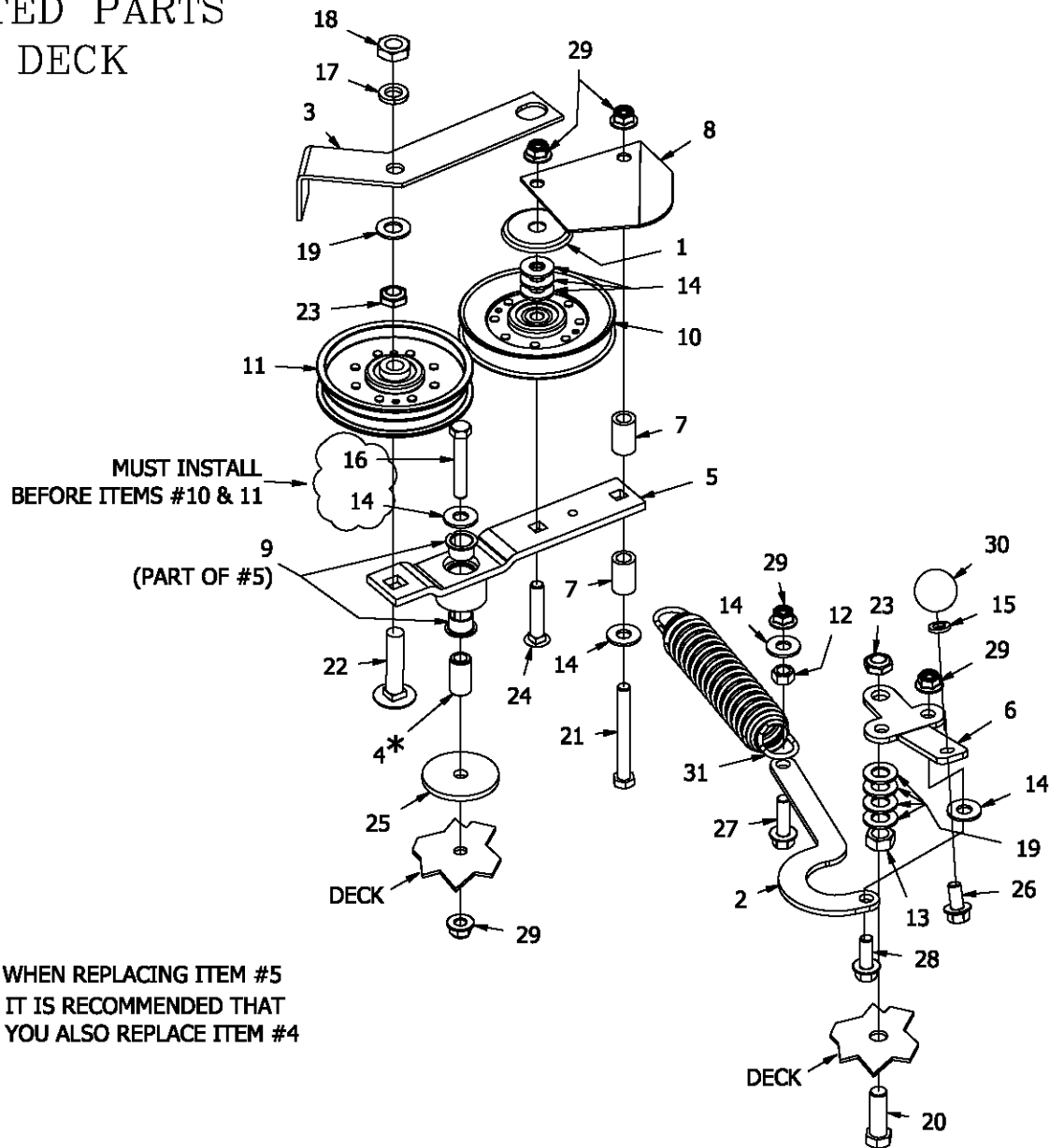
DECK SPINDLE ASS'Y {D-3917}



PARTS MARKED "*" THIS ARE
PART OF COMPLETE ASS'Y D-3917

ITEM #	PART #	QTY	DESCRIPTION	ITEM #	PART #	QTY	DESCRIPTION
1	660-099P	1	WASHER, BLADE, 5/8	13	H-2885	1	BLADE, W/O FUSION, 42" & 60" DECK
2	D-3918	1	PULLEY, 5.195, A-B, 42" & 60" DECK	-	H-2882	1	BLADE, W/O FUSION, 48" DECK
-	D-3919	1	PULLEY, 4.039, A-B, 48" DECK	-	H-2883	1	BLADE, W/O FUSION, 54" DECK
-	D-3920	1	PULLEY, 4.513, A-B, 54" DECK	OPTIONAL BLADES			
3	D-3961	1	SPINDLE SHAFT	-	H-2886	1	BLADE, W/FUSION, 42" & 60" DECK
4	D-3962	2	SPINDLE BRG.	-	H-2884	1	BLADE, W/FUSION, 54" DECK
5	--	1	HOUSING	-	H-2661	1	BLADE, LOW LIFT, 42" & 60" DECK
6	--	1	SPINDLE SPACER	-	H-2659	1	BLADE, LOW LIFT, 48" DECK
7	--	1	SPINDLE HARD WASHER	-	H-2660	1	BLADE, LOW LIFT, 54" DECK
8	--	1	RETAINING RING	-	H-2667	1	BLADE, GATOR, 42" & 60" DECK
9	--	1	FHCS, 1/2-13 X 1.00, YZ, GR5	-	H-2665	1	BLADE, GATOR, 48" DECK
10	F-2073	1	HHCS, 5/8-11 X 1.50, GR8, YZ	-	H-2666	1	BLADE, GATOR, 54" DECK
11	F-2147	4	FHCS, 3/8-16 X 1.50, YZ, GR5				
12	F-2151	4	NUT, 3/8-16 NYLOC, FLANGED				

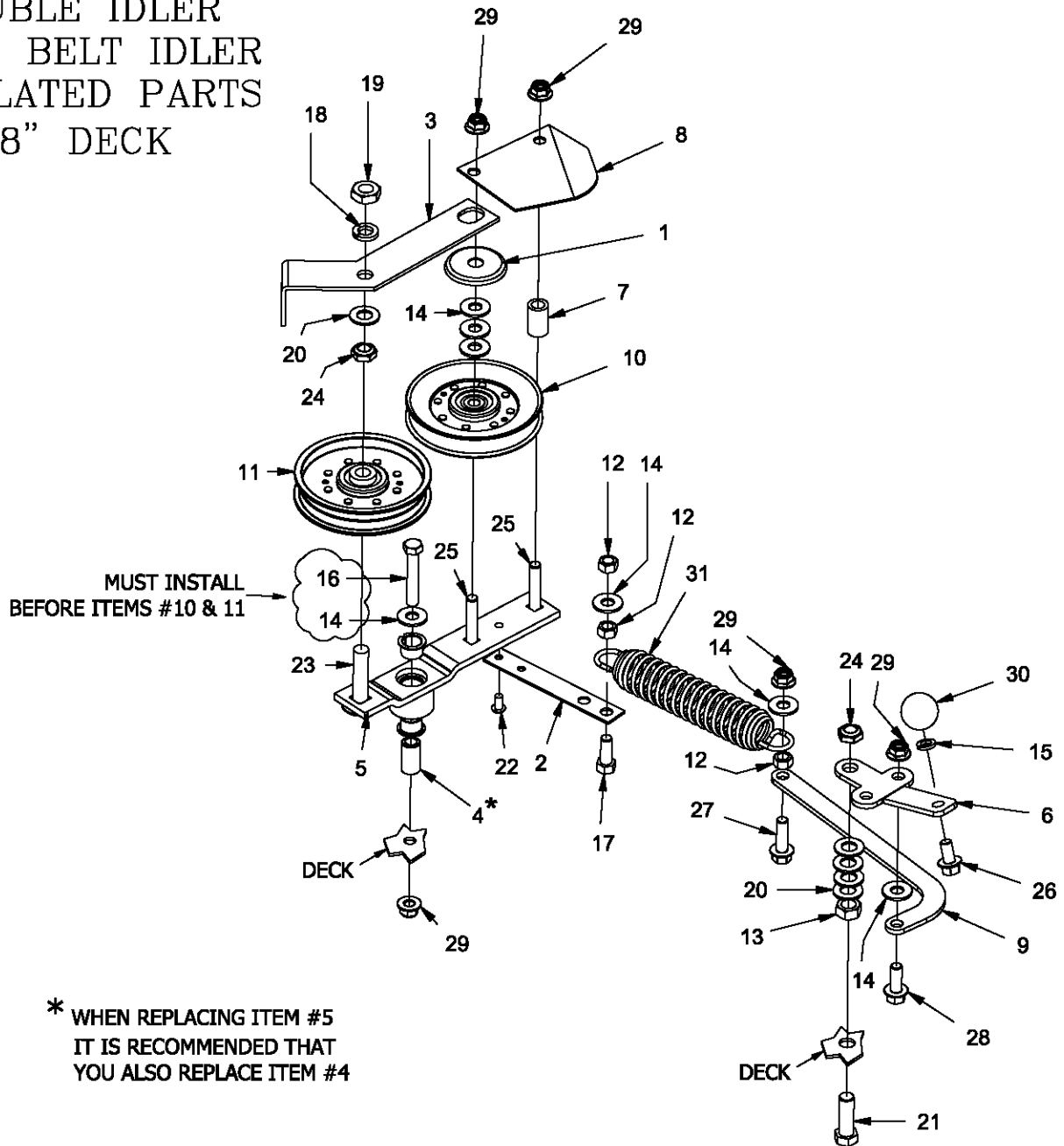
DOUBLE IDLER DRIVE BELT IDLER & RELATED PARTS 42" DECK



* WHEN REPLACING ITEM #5
IT IS RECOMMENDED THAT
YOU ALSO REPLACE ITEM #4

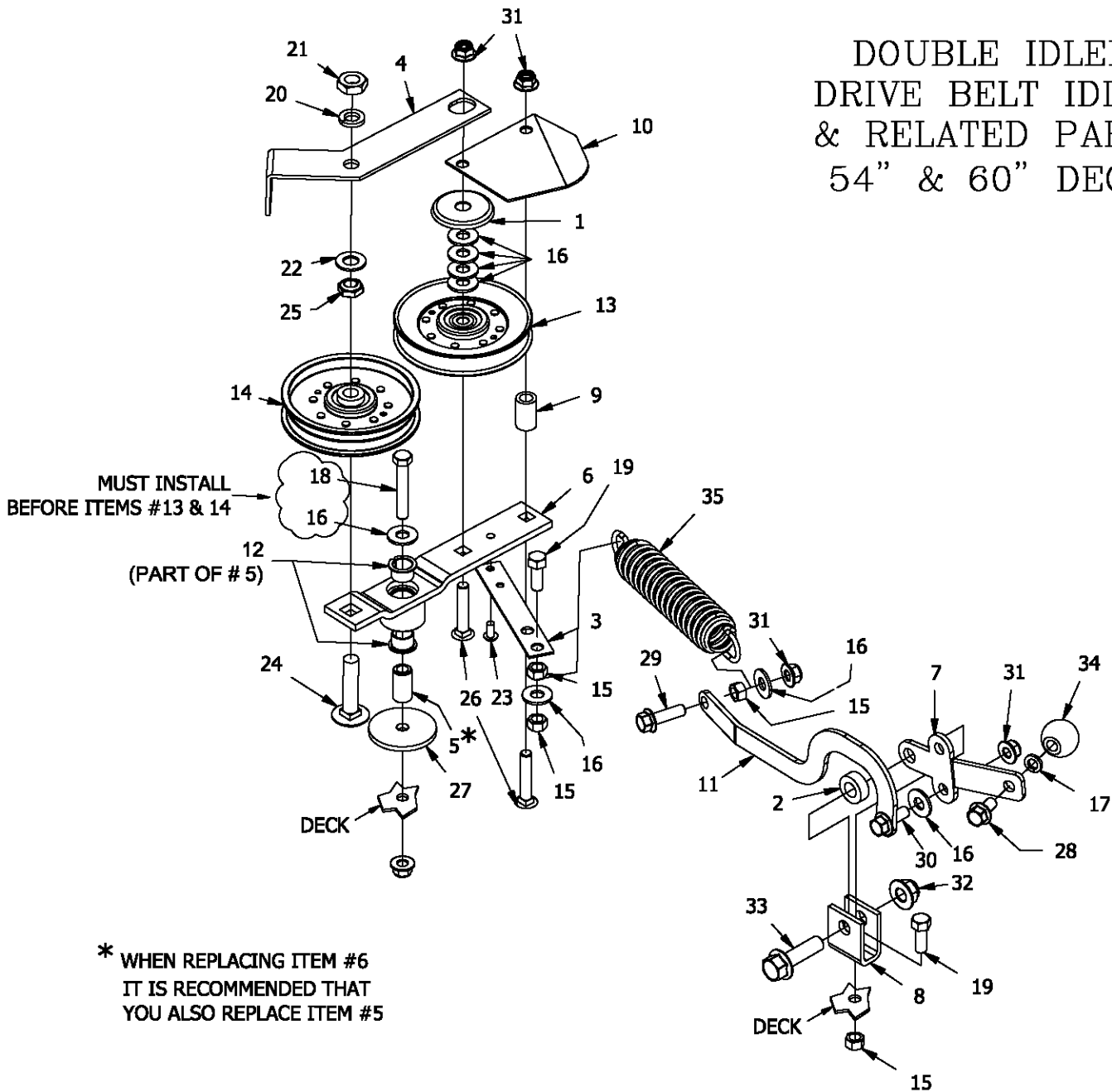
ITEM #	PART #	QTY	DESCRIPTION	ITEM #	PART #	QTY	DESCRIPTION
1	620-201P	1	WASHER, BEARING CAP	17	F-1464	2	1/2" LOCKWASHER
2	660-031P	1	BELT TIGHTNER ARM	18	F-1489	2	1/2-13 HEX JAM NUT
3	660-110P	1	BELT KEEPER, B BELT	19	F-1521	6	1/2" WASHER, CUSTOM
4	660-135P	1	MOUNTING PIN	20	F-1526	1	1/2-13 X1-1/2" CAPSCREW
5	660-147A	1	IDLER ARM ASSEMBLY	21	F-1616	1	3/8-16 X 3-1/4" CAPSCREW
6	660-184P	1	HANDLE, BELT TENSIONER	22	F-1822	1	1/2-13 X 2-1/4" CARRIAGE BOLT
7	668-021P	2	SPACER, BELT GUARD	23	F-1966	3	1/2-13 THIN NYLOC NUT
8	668-029P	1	BELT GUARD	24	F-1976	1	3/8-16 X 2" CARRIAGE BOLT
9	D-3730	1	FLANGE BUSHING	25	F-2102	1	WASHER.406ID X 2.25OD X 7GA THK
10	D-3923	1	PULLEY, V-IDLER, 4.59 OD, AB, NTN	26	F-2124	1	FHCS, 3/8-16 X 0.75, YZ, GR5
11	D-3924	1	PULLEY, FLAT IDLER, NTN, DBL INSERT	27	F-2125	1	FHCS, 3/8-16 X 1.25, YZ, GR5
12	F-1005-03	1	3/8-16 STOVER NUT	28	F-2141	1	FHCS, 3/8-16 X 1", YZ, GR5
13	F-1005-05	1	1/2-13 STOVER NUT	29	F-2151	13	NUT,3/8-16 NYLOC, FLANGED
14	F-1009-03	7	3/8" FLAT WASHER	30	H-2405	1	BALL, 1-1/4"
15	F-1019-03	1	3/8" LOCKWASHER	31	H-2619	1	SPRING,5 X 1-1/2,TAPERED ENDS
16	F-1268	1	HHCS, 3/8-16 X 2-1/4"				

DOUBLE IDLER DRIVE BELT IDLER & RELATED PARTS 48" DECK



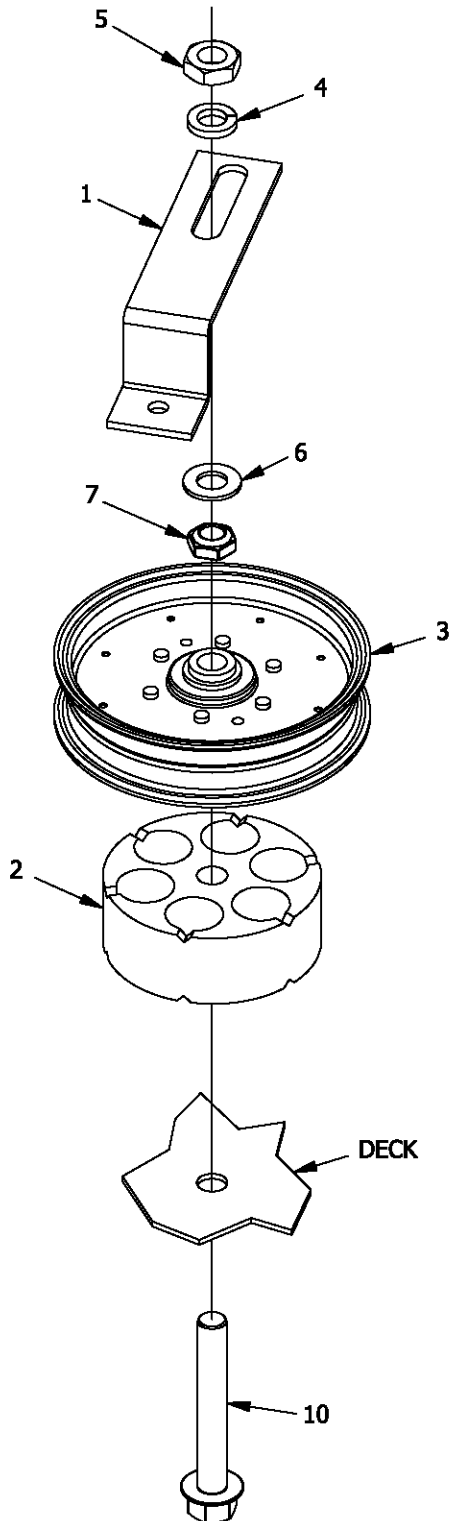
ITEM #	PART #	QTY	DESCRIPTION	ITEM #	PART #	QTY	DESCRIPTION
1	620-201P	1	WASHER, BEARING CAP	17	F-1394	1	3/8-16 X 1" CAPSCREW
2	660-081P	1	EXTENSION FOR SPRING	18	F-1464	2	1/2" LOCKWASHER
3	660-110P	1	BELT KEEPER, B BELT	19	F-1489	2	1/2-13 HEX JAM NUT
4	660-135P	1	MOUNTING PIN	20	F-1521	6	1/2" WASHER, CUSTOM
5	660-147A	1	IDLER ARM ASSEMBLY	21	F-1526	1	1/2-13 X1-1/2" CAPSCREW
6	660-184P	1	HANDLE, BELT TENSIONER	22	F-1733	1	1/4" X 1/2" DRIVE SCREW
7	668-021P	1	SPACER, BELT GUARD	23	F-1822	1	1/2-13 X 2-1/4" CARRIAGE BOLT
8	668-029P	1	BELT GUARD	24	F-1966	3	1/2-13 THIN NYLOC NUT
9	714-180P	1	BELT TENSION ARM	25	F-1976	2	3/8-16 X 2" CARRIAGE BOLT
10	D-3923	1	PULLEY, V-IDLER, 4.59 OD, AB, NTN	26	F-2124	1	FHCS, 3/8-16 X 0.75, YZ, GR5
11	D-3924	1	PULLEY, FLAT IDLER, NTN, DBL INSERT	27	F-2125	1	FHCS, 3/8-16 X 1.25, YZ, GR5
12	F-1005-03	3	3/8-16 STOVER NUT	28	F-2141	1	FHCS, 3/8-16 x 1", YZ, GR5
13	F-1005-05	1	1/2-13 STOVER NUT	29	F-2151	20	NUT, 3/8-16 NYLOC, FLANGED
14	F-1009-03	7	3/8" FLAT WASHER	30	H-2405	1	BALL, 1-1/4"
15	F-1019-03	1	3/8" LOCKWASHER	31	H-2619	1	SPRING, 5 X 1-1/2, TAPERED ENDS
16	F-1268	1	3/8-16 X2-1/4" CAPSCREW				

DOUBLE IDLER DRIVE BELT IDLER & RELATED PARTS 54" & 60" DECK

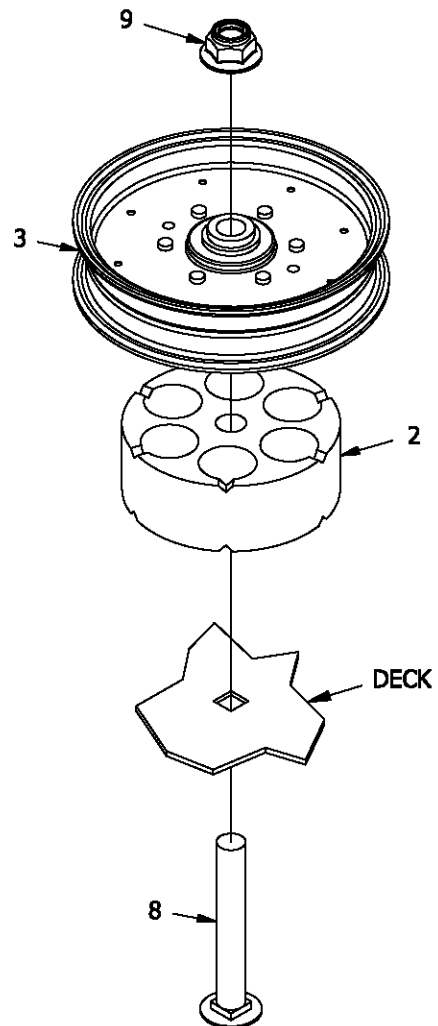


ITEM #	PART #	QTY	DESCRIPTION	ITEM #	PART #	QTY	DESCRIPTION
1	620-201P	1	WASHER, BEARING CAP	19	F-1394	3	3/8-16 X 1" CAPSCREW
2	660-038P	1	3/8" SPACER	20	F-1464	2	1/2" LOCKWASHER
3	660-081P	1	EXTENSION FOR SPRING	21	F-1489	2	1/2-13 HEX JAM NUT
4	660-110P	1	BELT KEEPER, B BELT	22	F-1521	2	1/2" WASHER, CUSTOM
5	660-135P	1	MOUNTING PIN	23	F-1733	1	1/4" X 1/2" DRIVE SCREW
6	660-147A	1	IDLER ARM ASSEMBLY	24	F-1822	1	1/2-13 X 2-1/4" CARRIAGE BOLT
7	660-184P	1	HANDLE, BELT TENSIONER	25	F-1966	2	1/2-13 THIN NYLOC NUT
8	661-015P	1	SHACKLE	26	F-1976	2	3/8-16 X 2" CARRIAGE BOLT
9	668-021P	1	SPACER, BELT GUARD	27	F-2102	1	WASHER, 406ID X 2.25OD X 7GA THK
10	668-029P	1	BELT GUARD	28	F-2124	1	FHCS, 3/8-16 X 0.75, YZ, GR5
11	714-161P	1	BELT TIGHTNER ARM	29	F-2125	1	FHCS, 3/8-16 X 1.25, YZ, GR5
12	D-3730	2	FLANGE BUSHING	30	F-2141	1	FHCS, 3/8-16 X 1", YZ, GR5
13	D-3923	1	PULLEY, V-IDLER, 4.59 OD, AB, NTN	31	F-2151	21	NUT, 3/8-16 NYLOC, FLANGED
14	D-3924	1	PULLEY, FLAT IDLER, NTN, DBL INSERT	32	F-2152	2	NUT, 1/2-13 NYLOC, FLANGED
15	F-1005-03	6	3/8-16 STOVER NUT	33	F-2154	1	FHCS, 1/2-13 X 1-3/4", YZ, GR5
16	F-1009-03	8	3/8" FLAT WASHER	34	H-2405	1	BALL, 1-1/4"
17	F-1019-03	1	3/8" LOCKWASHER	35	H-2619	1	SPRING, 5 X 1-1/2, TAPERED ENDS
18	F-1268	1	3/8-16 X 2-1/4" CAPSCREW				

FIXED IDLER ASS'Y (REAR)

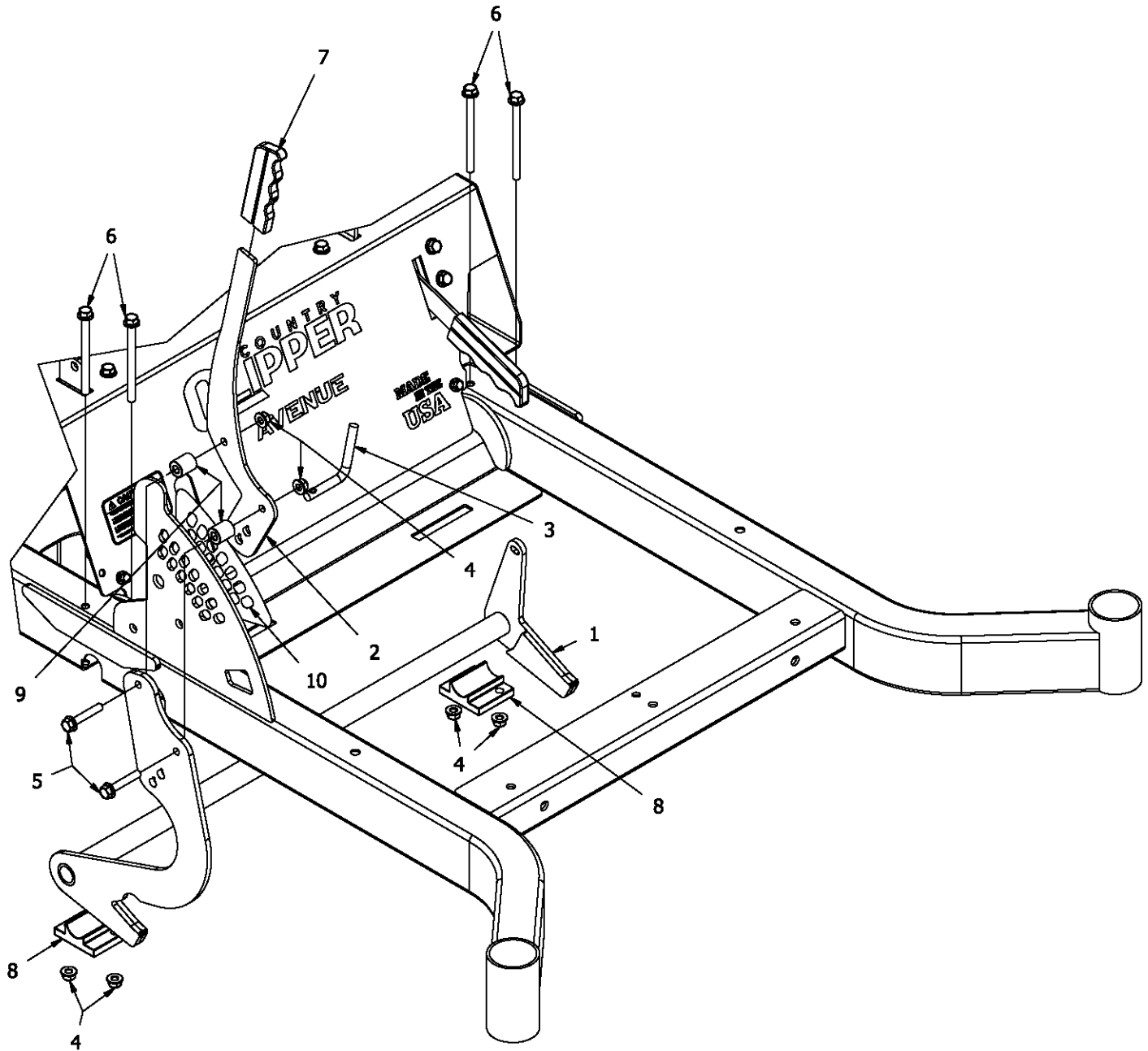


FIXED IDLER ASS'Y (FRONT)



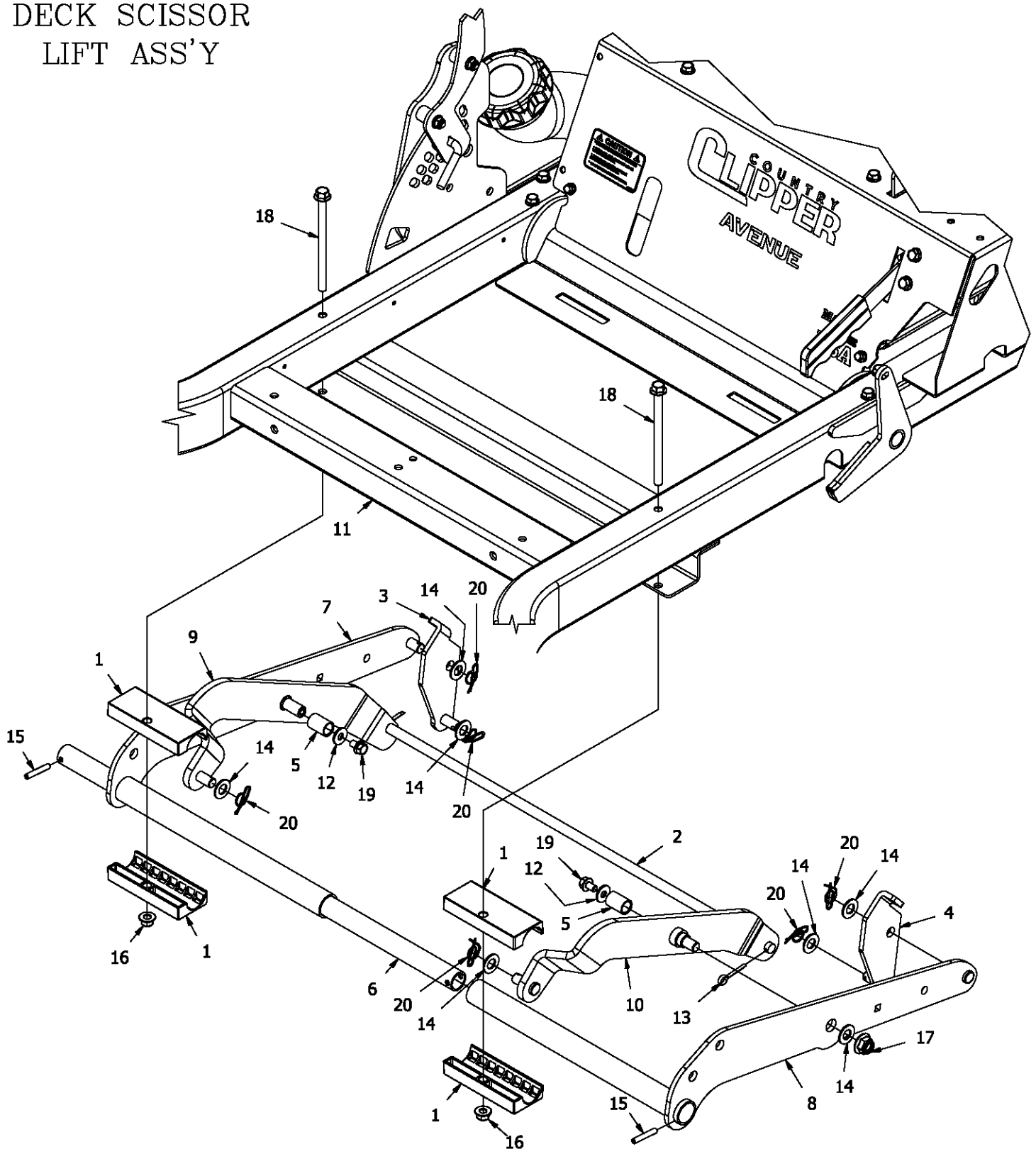
ITEM #	PART #	QTY	DESCRIPTION	ITEM #	PART #	QTY	DESCRIPTION
1	660-114P	1	BELT KEEPER, SINGLE END	7	F-1966	2	1/2-13 THIN NYLOC NUT
2	660-148P	2	SPACER, IDLER MOUNT	8	F-2106	1	1/2-13 X 3-1/2" CARRIAGE BOLT
3	D-3904	2	PULLEY, FLAT IDLER, 5" (NTN)	9	F-2152	2	NUT, 1/2-13 NYLOC, FLANGED
4	F-1464	2	1/2" LOCKWASHER	10	F-2163	1	FHCS, 1/2-13 X 3.50, YZ, GR5
5	F-1489	2	1/2-13 HEX JAM NUT	-	F-2185	1	HHCS, 1/2-13 X 4", YZ (54" ONLY)
6	F-1521	2	1/2" WASHER, CUSTOM				

DECK LIFT HANDLE ASS'Y



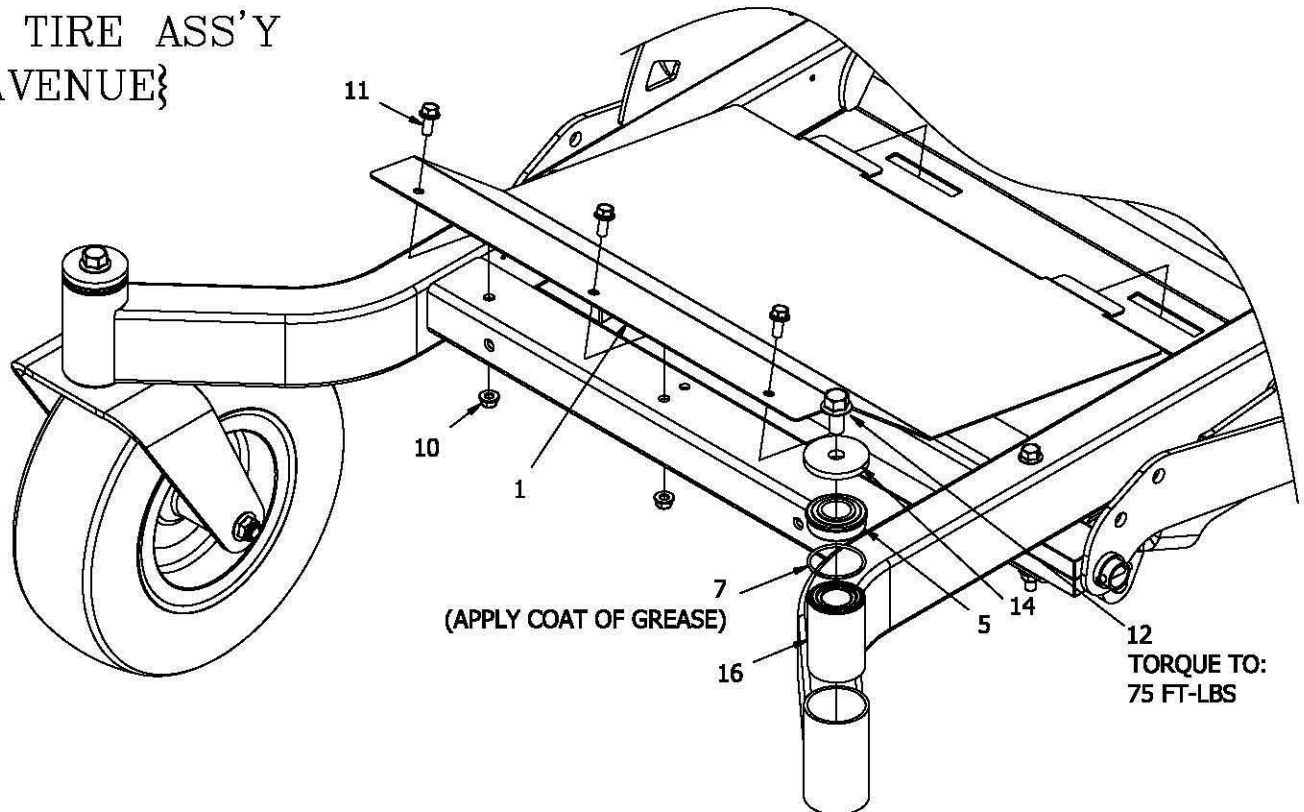
ITEM #	PART #	DESCRIPTION	ITEM #	PART #	DESCRIPTION
1	714-036W	WLD'T, LIFT HANDLE	6	F-2220	FHCS, 5/16-18 X 4", YZ, GR5
2	714-270P	PLATE, CUT HT LEVER	7	H-1926	1/4"X1" HANDLE GRIP
3	714-271P	CUT HEIGHT PIN	8	H-2960	HANGER BEARING
4	F-2063	NUT, 5/16-18 NYLOC, FLANGED	9	H-2963	SPACER, HANDLE
5	F-2123	FHCS, 5/16-18 X 1.75, YZ, GR5	10	P-13196	DECAL, DECK HEIGHT

DECK SCISSOR LIFT ASS'Y



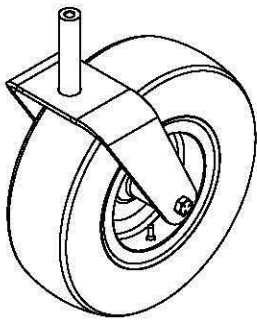
ITEM #	PART #	DESCRIPTION	ITEM #	PART #	DESCRIPTION
1	714-028P	BEARING, DECK PIVOT	11	D-3953	WLDT, FRAME
2	714-045P	PIN, REAR STOP	12	F-1009-02	5/16" FLAT WASHER
3	714-207W	WLDT, DROP LINK, R	13	F-1491	1" COTTER PIN
4	714-208W	WLDT, DROP LINK, L	14	F-1521	1/2" WASHER, CUSTOM
5	714-260P	SLEEVE, ROLLER	15	F-2009	SPIROL ROLL PIN, 1/4 X 1-1/2"
6	714-273P	PIN, DECK HINGE	16	F-2151	NUT, 3/8-16 NYLOC, FLANGED
7	714-287W	WLDT, DECK MOUNT, R	17	F-2152	NUT, 1/2-13 NYLOC, FLANGED
8	714-288W	WLDT, DECK MOUNT, L	18	F-2222	FHCS, 3/8-16 X 5-1/2", YZ, GR5
9	714-324W	WLDT, SCISSOR BAR, R	19	F-2223	FHCS, 5/16-18 X 1/2", YZ, GR5
10	714-325W	WLDT, SCISSOR BAR, L	20	H-2239	1/2" RUE RING

FOOT DECK & FRONT TIRE ASS'Y {AVENUE}

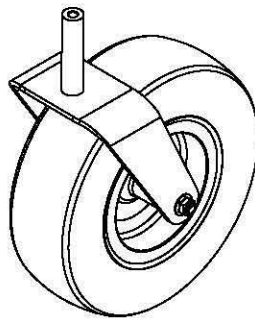


PEICE PARTS COVERED
BY COMPLETE ASSEMBLY

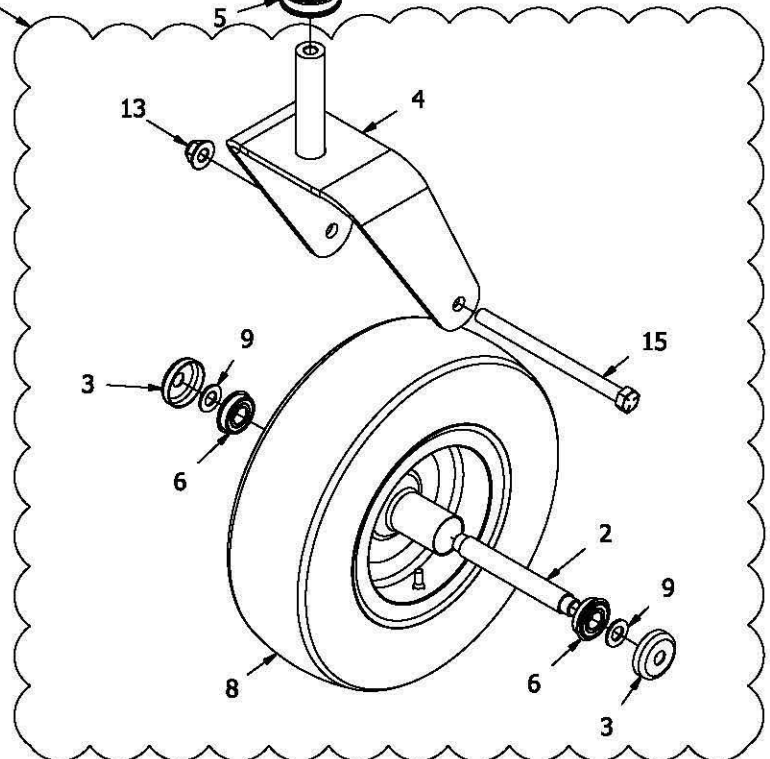
COMPLETE ASSEMBLIES ARE AVAILABLE UPON REQUEST
(AS NOTED BELOW)



714-228A
(RIGHT)

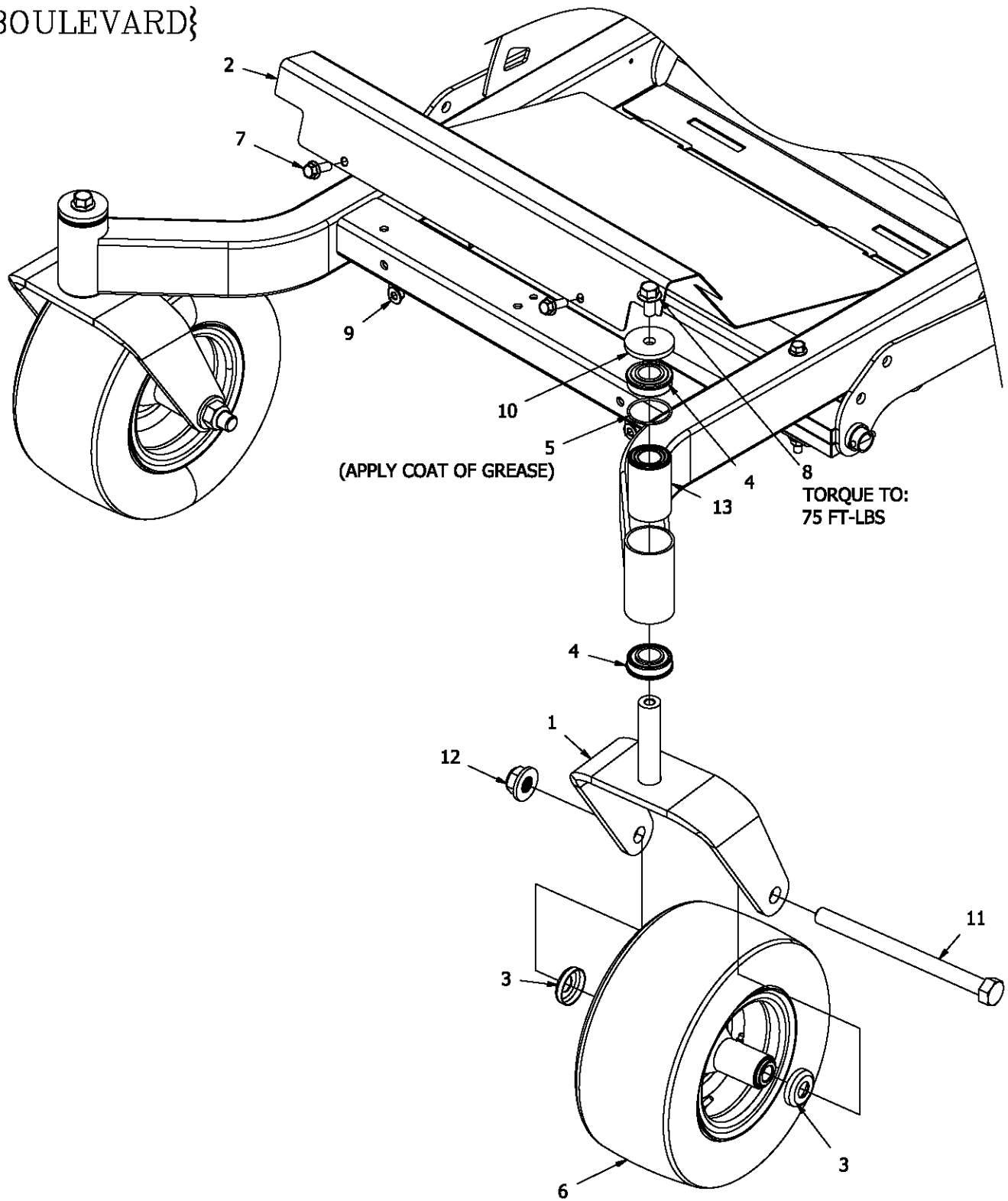


714-229A
(LEFT)



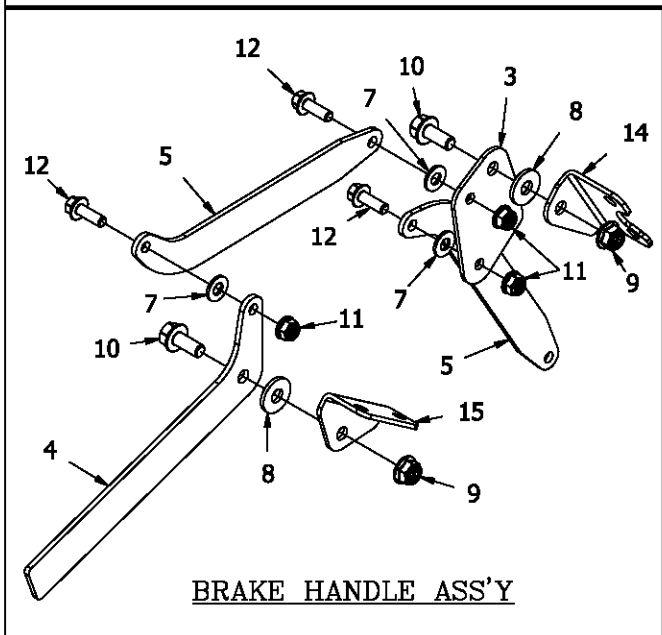
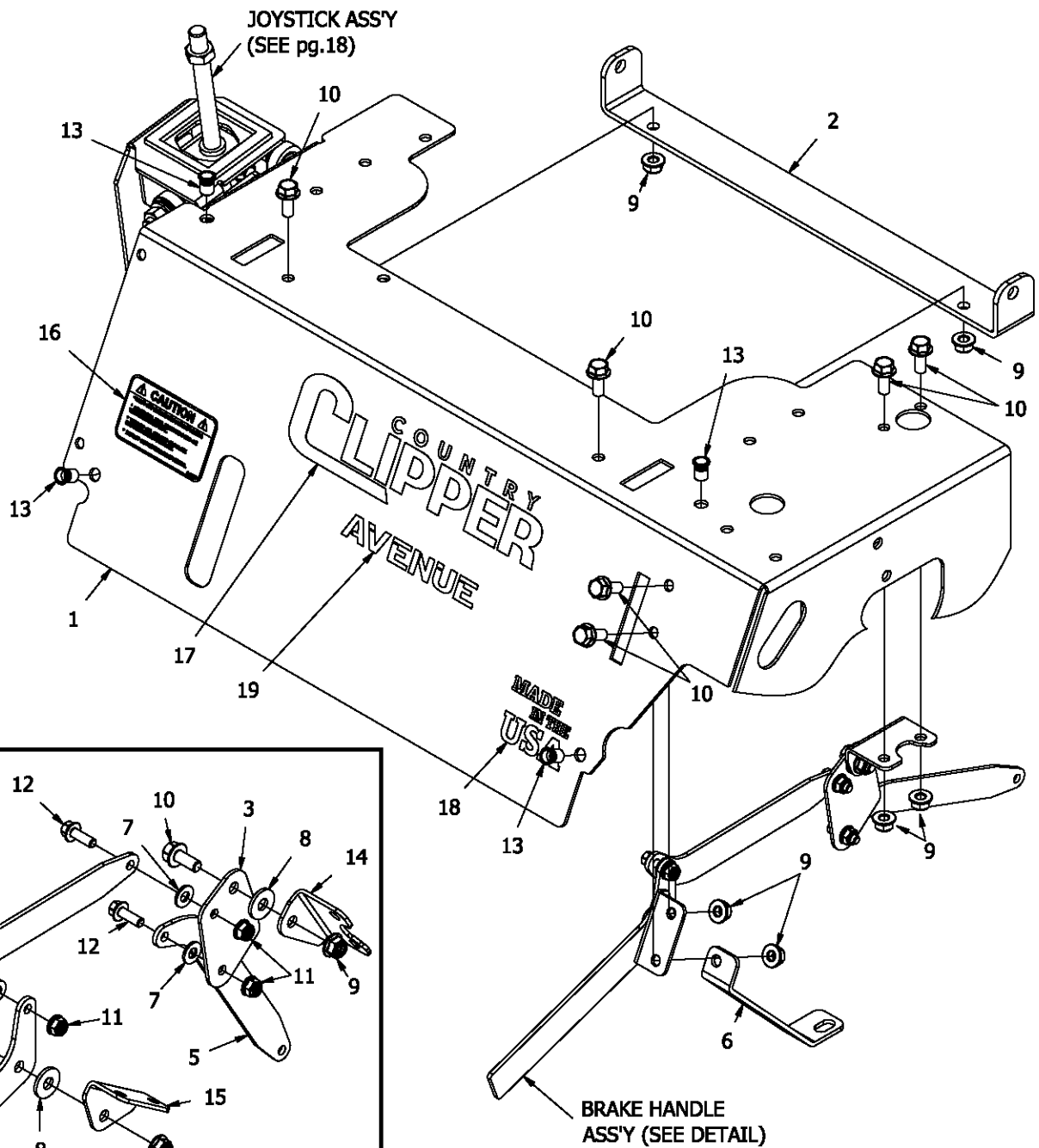
ITEM #	PART #	DESCRIPTION	ITEM #	PART #	DESCRIPTION
1	714-055P	PLATE, FLOOR	9	F-1521	1/2" WASHER, CUSTOM
2	714-225P	SPACER, WHEEL BEARING	10	F-2063	NUT, 5/16-18 NYLOC, FLANGED
3	714-277P	CAP, BEARING, SMALL	11	F-2120	FHCS, 5/16-18 X 0.75, YZ, GR5
4	714-227W	WLD'T, CASTER YOKE	12	F-2143	FHCS, 1/2-13 X 1.00, YZ, GR5
5	D-2008-02	BEARING SF-16-32	13	F-2152	NUT, 1/2-13, NYLOC, FLANGED
6	D-3432	BEARING, 5/8" I.D., 1-3/8" O.D.	14	F-2179	WASHER, CASTER, .531 IDX2.25 ODX.25 THK
7	D-3941	O-RING	15	F-2198	HHCS, 1/2-13 X 7", YZ, GR5
8	D-3956	TIRE ASS'Y, 13X5-6, WHITE SM BRG, SMOOTH	16	H-2941	SPACER, CASTER BEARING

FOOT DECK &
FRONT TIRE ASS'Y
{BOULEVARD}



ITEM #	PART #	DESCRIPTION	ITEM #	PART #	DESCRIPTION
1	714-219W	WLD'T, CASTER YOKE	8	F-2143	FHCS, 1/2-13 X 1.00, YZ, GR5
2	714-233P	PLATE, FLOOR	9	F-2151	NUT, 3/8-16 NYLOC, FLANGED
3	714-252P	CAP, BEARING, SMALL, 3/4"	10	F-2179	WASHER, CASTER, .531 IDX2.25 ODX.25 THK
4	D-2008-02	BEARING SF-16-32	11	F-2194	HHCS, 3/4-10 X 9-1/2", YZ, GR5
5	D-3941	O-RING	12	F-2195	NUT, FLANGE NYLOC, YZ
6	D-3957	TIRE ASS'Y, 13X6.5-6, WHITE, SM BRG, SMOOTH	13	H-2941	SPACER, CASTER BEARING
7	F-2141	FHCS, 3/8-16 X 1", YZ, GR5			

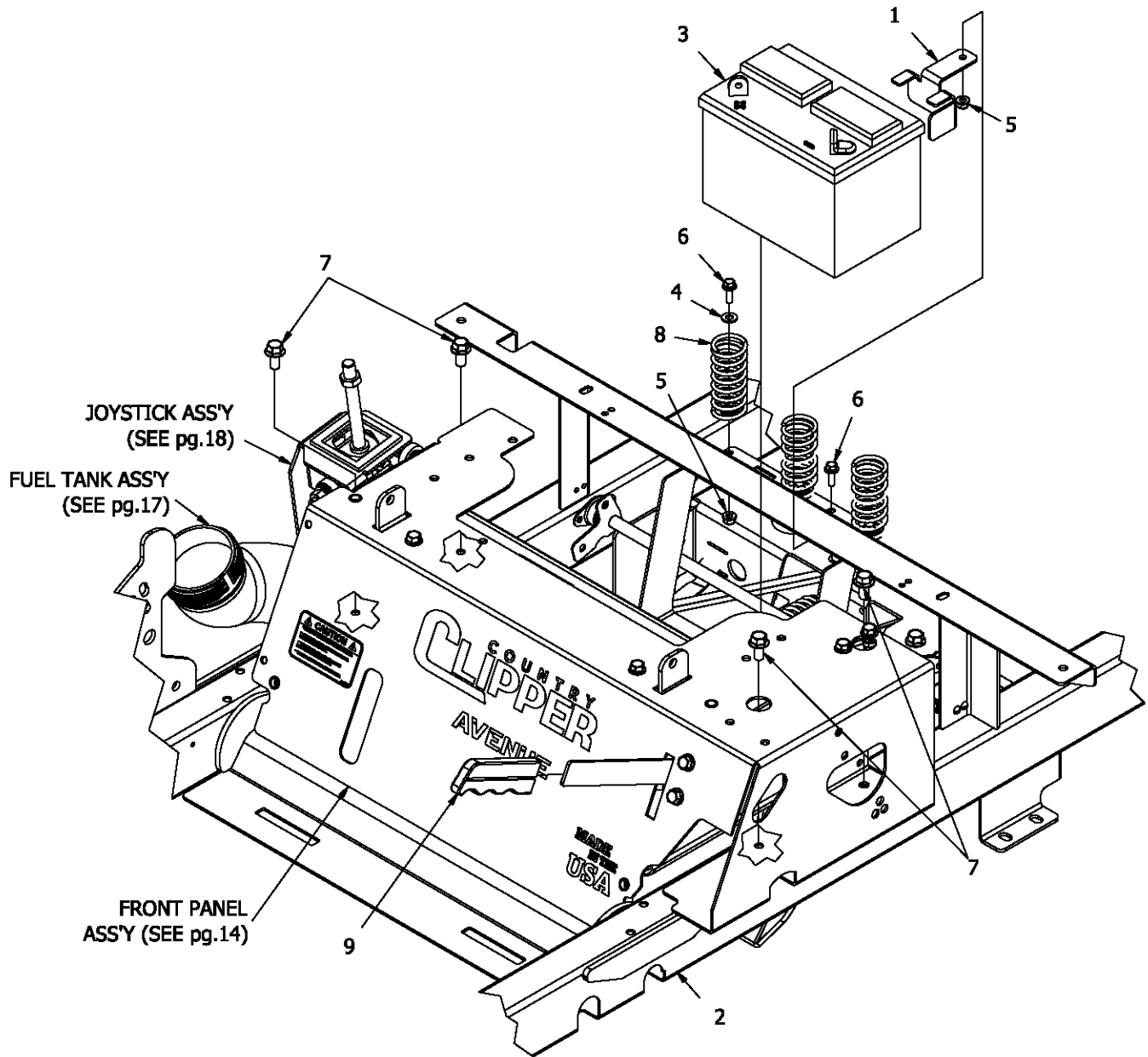
FRONT PANEL ASS'Y & RELATED PARTS



NOTE:
ITEMS #13, #16-#19
ARE PART OF ASS'Y #1

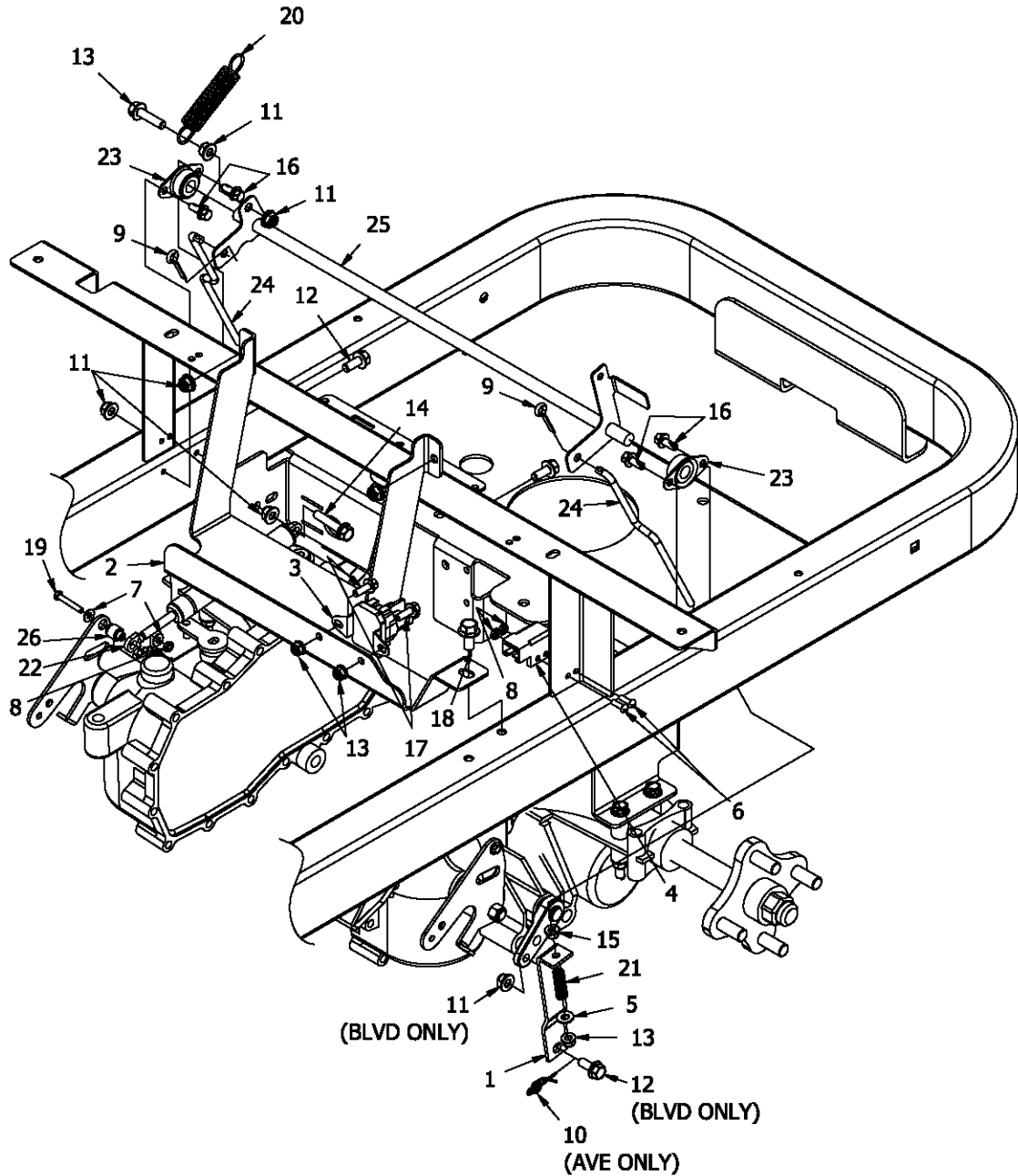
ITEM #	PART #	DESCRIPTION	ITEM #	PART #	DESCRIPTION
1	714-020A	FRONT PANEL w/DECALS, AVE (SHOWN)	10	F-2120	FHCS, 5/16-18 X 0.75, YZ, GR5
-	714-021A	FRONT PANEL w/DECALS, BLVD	11	F-2132	NUT, 1/4-20 NYLOC, FLANGED
2	714-314P	PLATE, SEAT HINGE, AVE (SHOWN)	12	F-2162	FHCS, 1/4-20 X 3/4", GR5, YZ
-	714-290P	PLATE, SEAT MOUNT, BLVD	13	F-2229	NUT, RIVET, 1/4-20, OPEN END
3	714-345P	CRANK PLATE, PARK BRAKE	14	H-2934	PIVOT, BRAKE CRANK
4	714-346P	HANDLE, PARK BRAKE	15	H-2935	PIVOT, BRAKE HANDLE
5	714-349P	BAR, LINK, PARK BRAKE	16	P-12557	CAUTION FUEL DECAL
6	714-351P	BRACE, FRONT PANEL (BLVD ONLY)	17	P-12984	DECAL, NEW CC, LG, BLK
7	F-1009-01	1/4" FLAT WASHER	18	P-13000	DECAL, MADE IN THE USA
8	F-1009-02	5/16" FLAT WASHER	19	P-13186	DECAL, AVENUE, GLOSS BLK (SHOWN)
9	F-2063	NUT, 5/16-18 NYLOC, FLANGED	-	P-13187	DECAL, BOULEVARD, GLOSS BLK

FRONT PANEL ASS'Y & RELATED PARTS (CON'T)



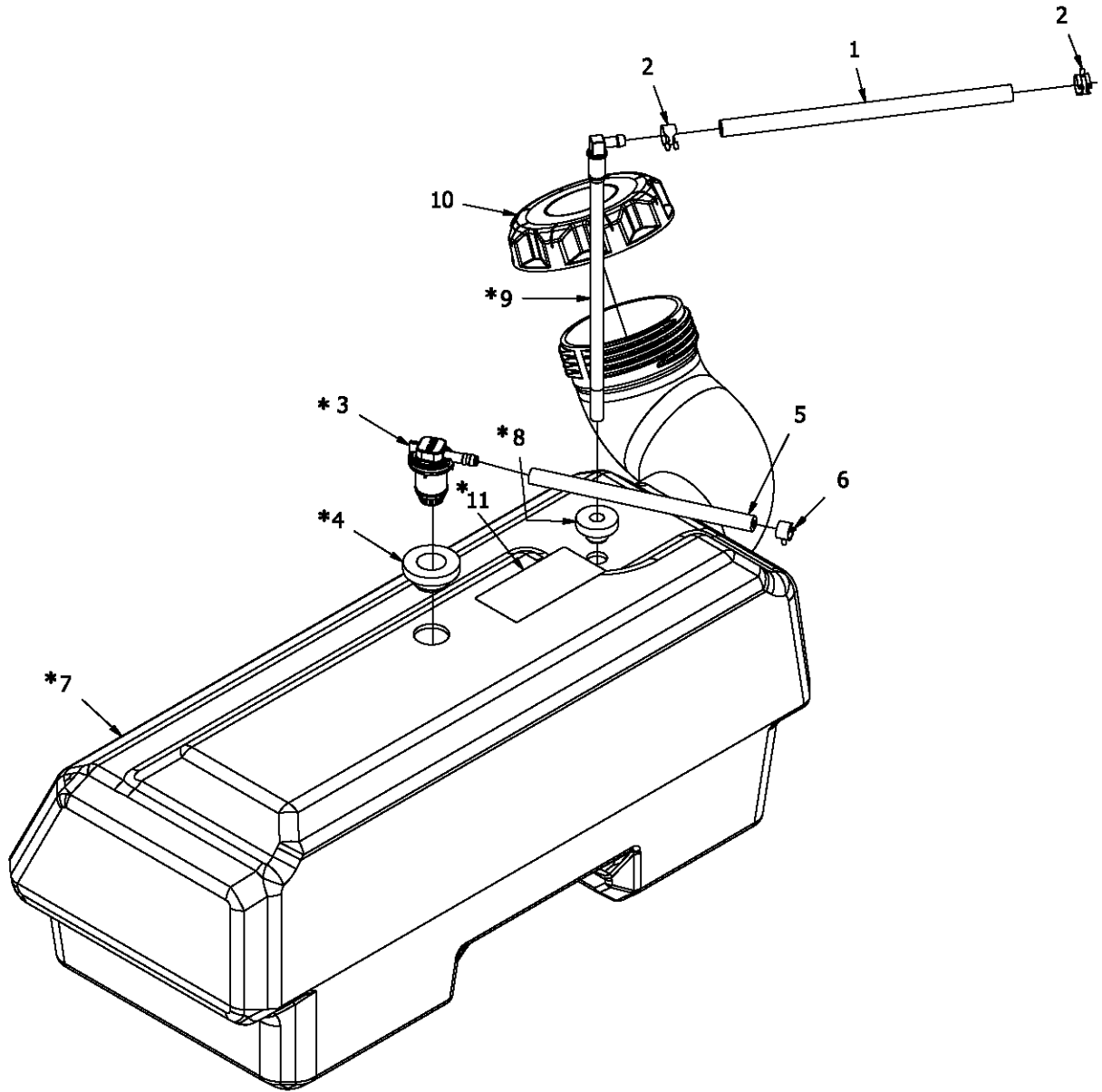
ITEM #	PART #	DESCRIPTION
1	714-214P	PLT, BATTERY HOLD DOWN
2	D-3953	WLDT, FRAME
3	E-6604	BATTERY
4	F-1009-01	1/4" FLAT WASHER
5	F-2132	NUT, 1/4-20 FLANGED NYLOC
6	F-2162	FHCS, 1/4-20 X 3/4", GR5, YZ
7	F-2219	HFCS, 3/8-16 X 3/4", THD FORMING, YZ, GR5
8	H-1920	SPRING, SEAT
9	H-1926	1/4" X 1" HANDLE GRIP

BRAKES & BATTERY BOX ASS'Y



ITEM #	PART #	DESCRIPTION	ITEM #	PART #	DESCRIPTION
1	659-159P	BRAKE LINK	14	F-2129	FHCS, 5/16-18 X 1.5, YZ, GR5, LOCK PATCH
2	714-034P	BOX, BATTERY	15	F-2132	NUT, 1/4-20 NYLOC, FLANGED
3	E-6054	SOLENOID 12VOLT	16	F-2134	HFCS, 1/4-20 X 5/8", YZ, SELF TAPPING
4	E-6297	BRAKE SWITCH	17	F-2162	FHCS, 1/4-20 X 3/4", GR5, YZ
5	F-1009-01	1/4" FLAT WASHER	18	F-2219	HFCS, 3/8-16 X 3/4", THD FORMING, YZ, GR5
6	F-1022-26	10-32 X 5/8" MACHINESCREW	19	F-2221	HHMS, 10-32 X 1-1/4", YZ, GR5
7	F-1071	#10 FLAT WASHER	20	H-1635	SPRING, EXT, 3/4"OD X 4" OAL
8	F-1448	10-32 NYLOC LOCKNUT	21	H-1637	COMPRESSION SPRING (1.250" LONG)
9	F-1491	1" COTTER PIN	22	H-2896	NC 300 DAMPER
10	F-1492	5/16-3/8 RUE RING	23	H-2921	FLANGE BEARING-0.500"
11	F-2063	NUT, 5/16-18 NYLOC, FLANGED	24	H-2924	BRAKE LINK ROD
12	F-2120	FHCS, 5/16-18 X 0.75, YZ, GR5	25	H-2953	WLDT, PARK BRAKE
13	F-2122	FHCS, 5/16-18 X 1.25, YZ, GR5	26	H-2961	BUSHING, DAMPER MOUNT

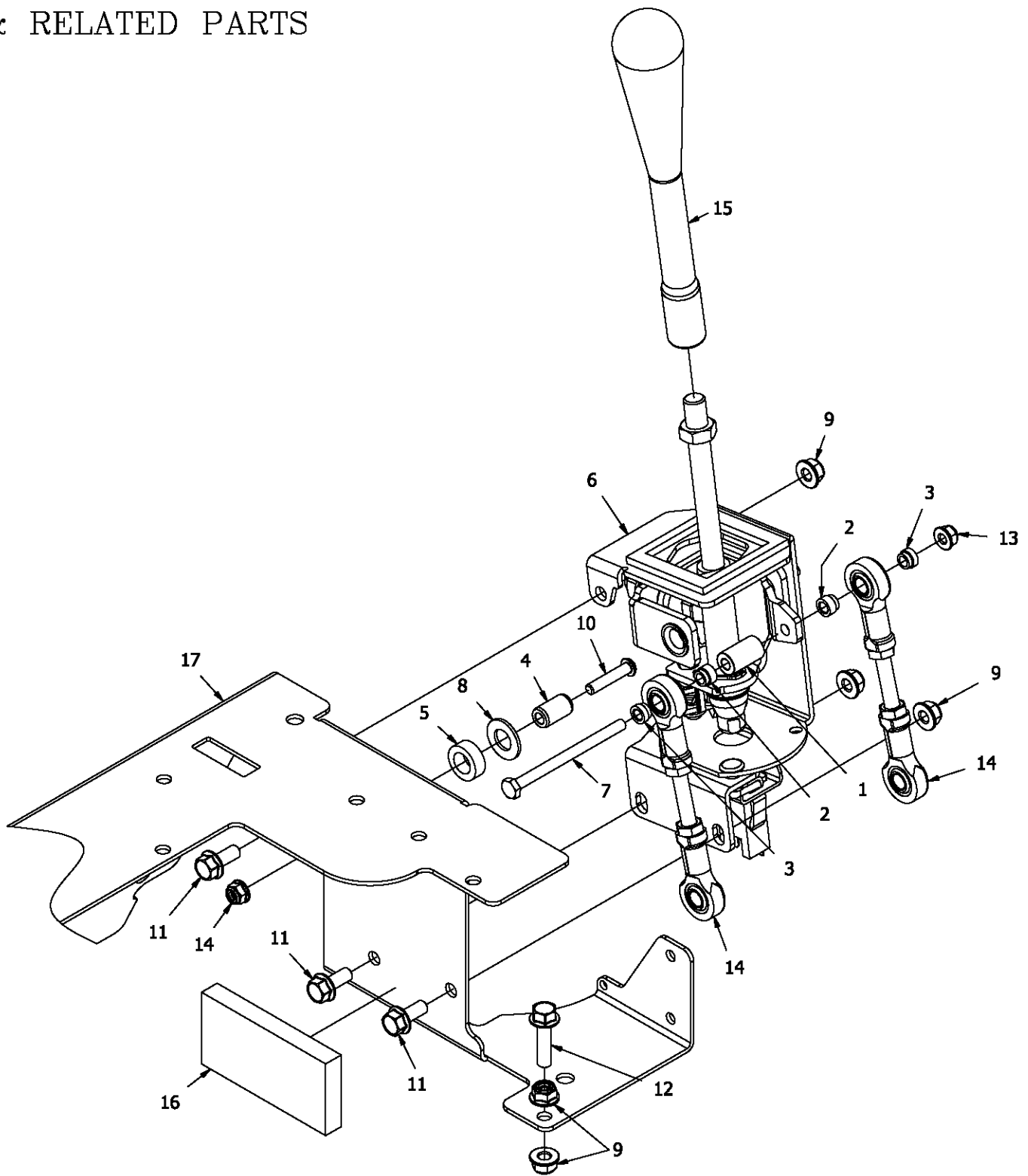
FUEL TANK ASS'Y



IF A TANK IS REQUIRED IT CAN ONLY
BE PURCHASED AS A COMPLETE ASSEMBLY
(PARTS MARKED THUS "*" ARE INCLUDED IN ASS'Y)

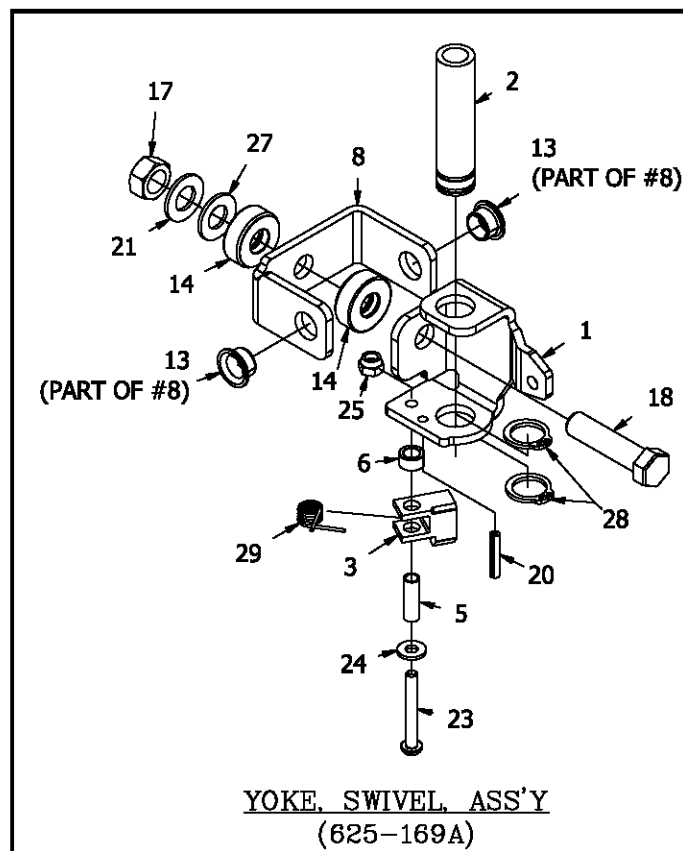
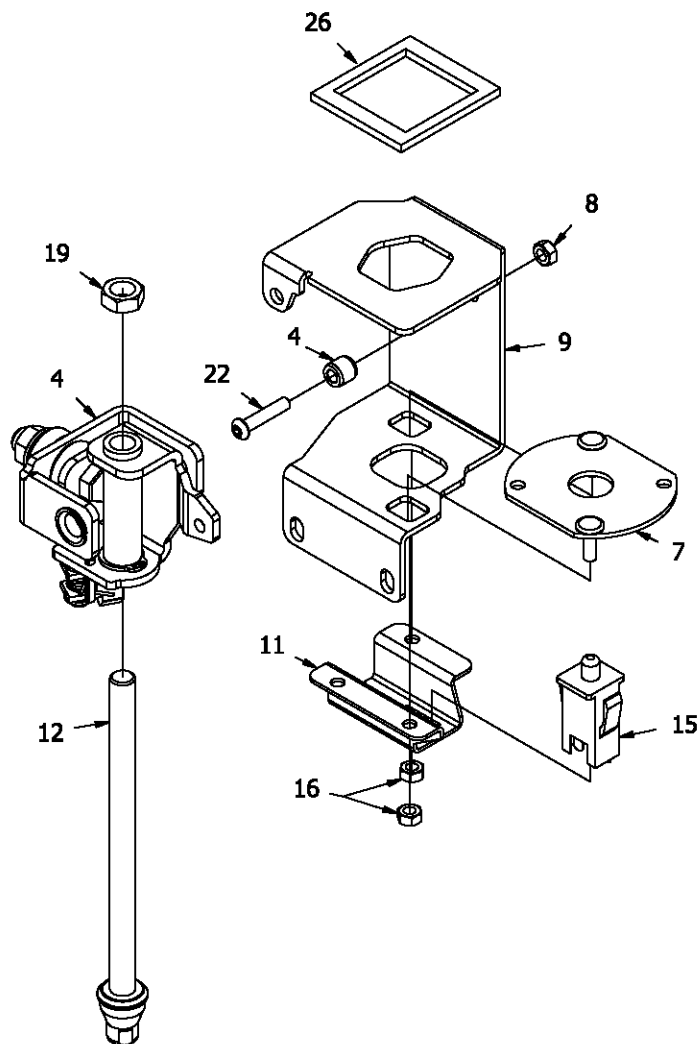
ITEM #	PART #	DESCRIPTION
1	H-1648	FUEL LINE, 1/2 O.D.
2	H-1687	1/2 O.D. HOSE SPRING CLAMP
3	H-2678	REMOTE VENT
4	H-2679	REMOTE VENT GROMMET
5	H-2697	HOSE, FUEL LINE .188 ID X .406 OD
6	H-2698	CLAMP, .406 OD FUEL LINE
7	H-2724	ASSEMBLY, FUEL TANK, SMALL
8	H-2741	GROMMET, PICK UP TUBE
9	H-2742	PICK UP TUBE
10	H-2743	3.50" CARB CAP w/TETHER
11	P-12922	CARB/EPA LABEL

JOYSTICK CONTROL & RELATED PARTS



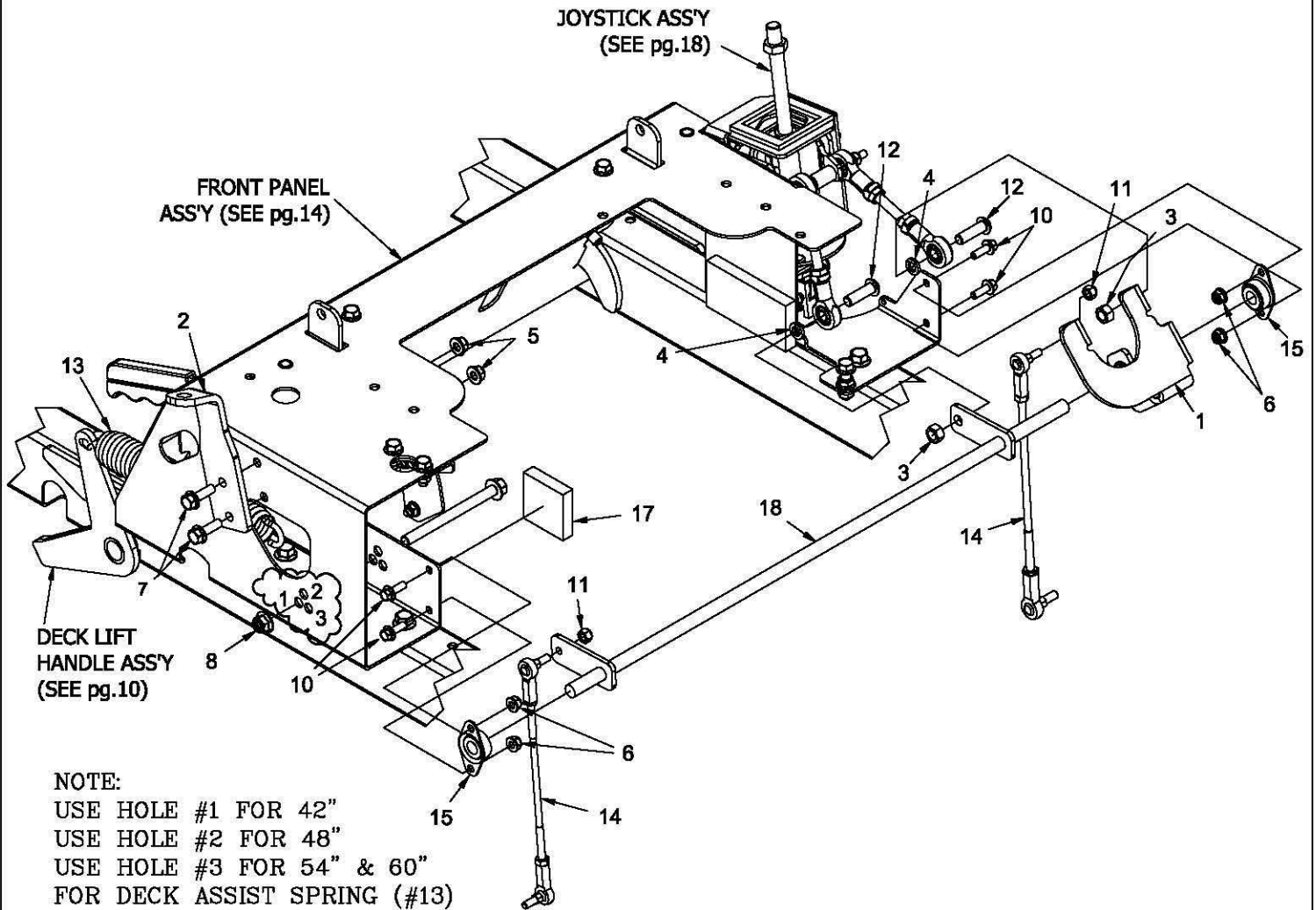
ITEM #	PART #	DESCRIPTION	ITEM #	PART #	DESCRIPTION
1	625-100P	TUBE,PIVOT,JOYSTICK	10	F-2103	BUTTON SHCS,1/4-20 X 1.25,CZ
2	625-107P	BUSHING, .375 ROD END	11	F-2120	FHCS, 5/16-18 X 0.75, YZ, GR5
3	625-116P	BUSHING, .375 ROD END,SHORT	12	F-2122	FHCS, 5/16-18 X 1.25, YZ, GR5
4	625-119P	PIN,PIVOT,JS, LONG	13	F-2132	NUT, 1/4-20 NYLOC, FLANGED
5	625-126P	SPACER, JOYSTICK PANEL	14	H-2926	LINKAGE, UPPER, JS
6	625-171A	JOYSTICK ASS'Y, SHORT	15	H-2964	HANDLE, JOYSTICK
8	F-1521	1/2" WASHER, CUSTOM	16	H-2990	FOAM PAD, 1/2 X 2" X 4"
7	F-1020-01	1/4-20 X 3-1/2" CAPSCREW	17	-----	FRONT PANEL w/DECALS (SEE pg.18)
9	F-2063	NUT, 5/16-18 NYLOC, FLANGED			

JOYSTICK ASSEMBLY (625-171A)



ITEM #	PART #	DESCRIPTION	ITEM #	PART #	DESCRIPTION
1	625-096P	YOKE,SWIVEL,JOYSTICK	16	F-1005-01	1/4-20 LOCK NUT
2	625-099P	TUBE,GUIDE,CONTROL ROD	17	F-1005-05	1/2-13 STOVER NUT
3	625-103P	TAB,CAM DETENT	18	F-1293	1/2-13 X 2" CAPSCREW
4	625-106P	PIN, PIVOT, JS	19	F-1462	NUT, 1/2-20 JAM
5	625-124P	TUBE-SPACER, DETENT CAM	20	F-1503	3/16 X 1" SPIRAL PIN
6	625-125P	SPACER, CAM DETENT	21	F-1521	1/2" WASHER, CUSTOM
7	625-127W	NEUTRAL PLATE WELDMENT	22	F-2103	BUTTON SHCS, 1/4-20 X 1.25, CZ
8	625-128A	PIVOT ASSEMBLY	23	F-2135	SCR,PANHD,PHILPS, #12-24 X 1.75
9	625-154P	HOUSING, JOYSTICK	24	F-2136	WASHER, FLAT, #12 PLAIN
10	625-169A	YOKE, SWIVEL ASS'Y	25	F-2137	NUT, #12-24, NYLOCK
11	659-285P	MOUNT, SWITCH	26	H-1947	GASKET, FOAM
12	709-169A	ROD ASS'Y, SHORT	27	H-2704	SPRING,BELLEVILLE,.50X1X.073
13	D-3784	FLANGED BUSHING	28	H-2705	RING,RETAINING,.75 EXT.
14	D-3931	THRUST BEARING	29	H-2710	SPRING,DETENT,JOYSTICK
15	E-6474	SWITCH, SNAP MOUNT			

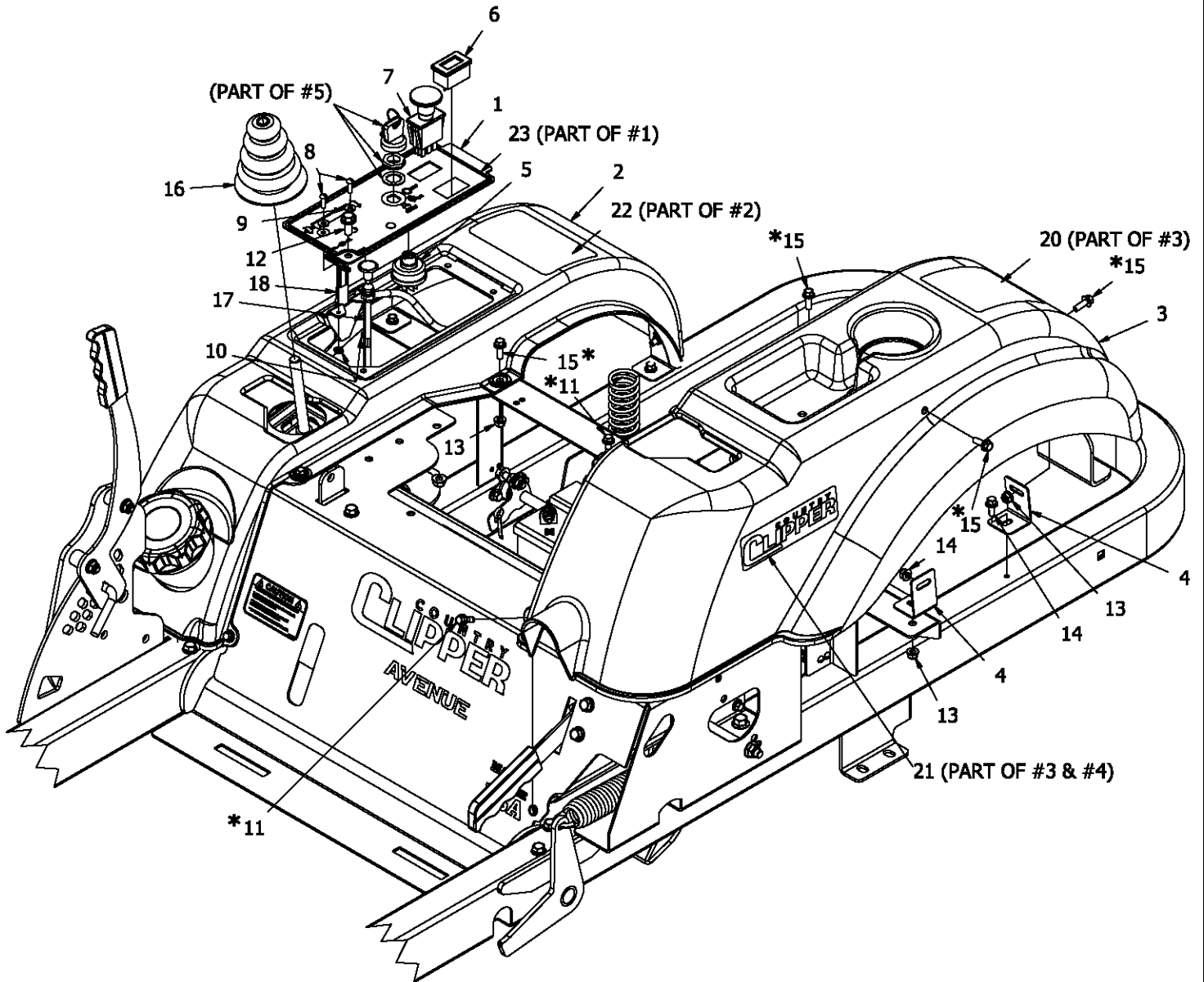
FRONT PANEL & JOYSTICK ASS'Y MOUNTING & RELATED PARTS



NOTE:
 USE HOLE #1 FOR 42"
 USE HOLE #2 FOR 48"
 USE HOLE #3 FOR 54" & 60"
 FOR DECK ASSIST SPRING (#13)
 BOLT (#9) & NUT (#8)

ITEM #	PART #	DESCRIPTION	ITEM #	PART #	DESCRIPTION
1	714-084A	ASSEMBLY, PIVOT PLATE	10	F-2162	FHCS, 1/4-20 X 3/4", GR5, YZ
2	714-340P	PLT, HANDLE MOUNT (BLVD ONLY)	11	F-2202	NUT, 1/4-28, NYLOC, YZ
3	F-1005-03	3/8-16 STOVER NUT	12	F-2230	BSCS, 3/8-16 X 1-1/4, YZ, GR5
4	F-1019-03	3/8" LOCKWASHER	13	H-2900	SPRING, DECK COUNTER BALANCE
5	F-2063	NUT, 5/16-18 NYLOC, FLANGED (BLVD ONLY)	14	H-2901	LINKAGE, STUDDED, 1/4" X 9-1/2"
6	F-2132	NUT, 1/4-20 NYLOC, FLANGED	15	H-2921	FLANGE BEARING-0.500"
7	F-2148	FHCS, 5/16-18 X 1", YZ, GR5 (BLVD ONLY)	16	H-2941	SPACER, CASTER BEARING
8	F-2151	NUT, 3/8-16 NYLOC, FLANGED	17	H-2990	FOAM PAD, 1/2" X 2" X 2"
9	F-2160	FHCS, 3/8-16 X 4 1/2", YZ, GR5	18	H-2954	WLDT, JS PIVOT SHAFT

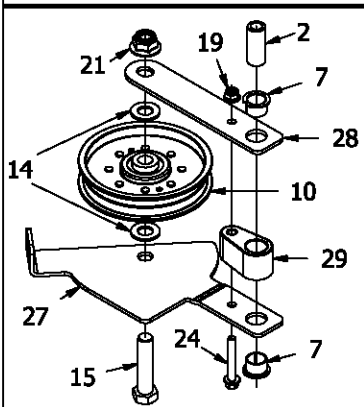
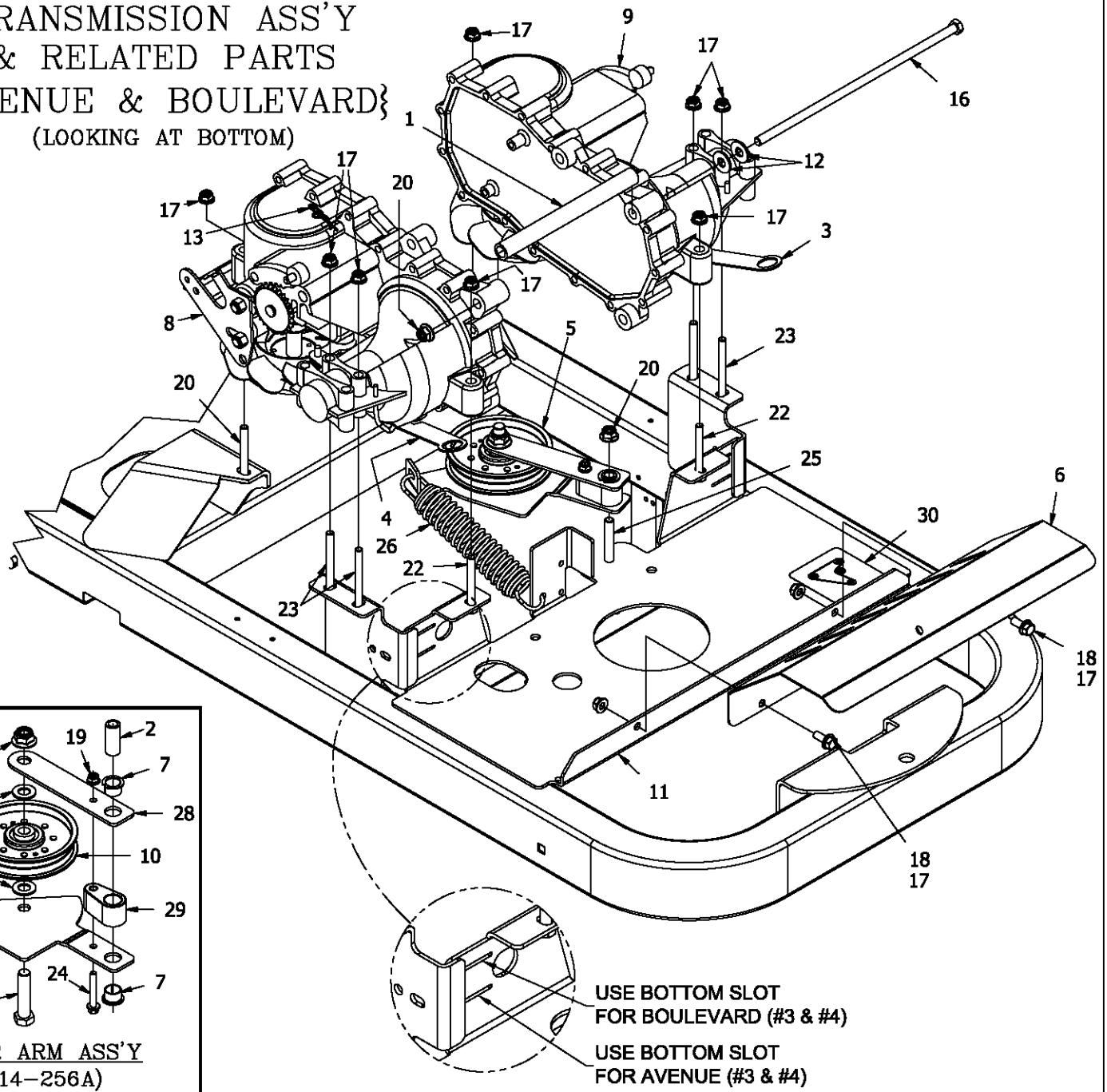
FENDER ASS'Y & RELATED PARTS



* ITEMS #11 & 15 TORQUE SPEC = 5 FT/LBS

ITEM #	PART #	DESCRIPTION	ITEM #	PART #	DESCRIPTION
1	714-027A	CONTROL PLATE w/DECAL, AVE (W/O E-5878)	13	F-2132	NUT, 1/4-20 NYLOC, FLANGED
--	714-031A	CONTROL PLATE w/DECAL, BLVD (AVE w/E-5878)	14	F-2134	HFCS, 1/4-20 X 5/8", YZ, SELF TAPPING
2	714-037A	FENDER, RH w/DECAL	15	F-2162	FHCS, 1/4-20 X 3/4", GR5, YZ
3	714-038A	FENDER, LH w/DECAL	16	H-1991	JOYSTICK BOOT
4	714-323P	TAB, FENDER MOUNT	17	H-2287	CHOKE CABLE
5	E-5873	3 POSITION KEY SWITCH	18	H-2610	THROTTLE CABLE (KAWASAKI ENGINE)
6	E-5878	HOUR METER (BLVD ONLY)	--	H-2611	THROTTLE CABLE (KOHLER ENGINE)
7	E-6403	PTO SWITCH	19	H-2743	3.50" CARB CAP w/TETHER
8	F-1022-26	10-32 X 5/8" MACHINESCREW	20	P-11370	DECAL, WARNING
9	F-1071	#10 FLAT WASHER	21	P-12985	DECAL, NEW CC, SM, BLK
10	F-1448	10-32 NYLOC LOCKNUT	22	P-13188	DECAL, INSTRUCTION
11	F-2119	FHCS, 1/4-20 X 0.75, YZ, LOCK PATCH, GR5	23	P-13195	DECAL, CONTROL PANEL
12	F-2120	FHCS, 5/16-18 X 0.75, YZ, GR5			

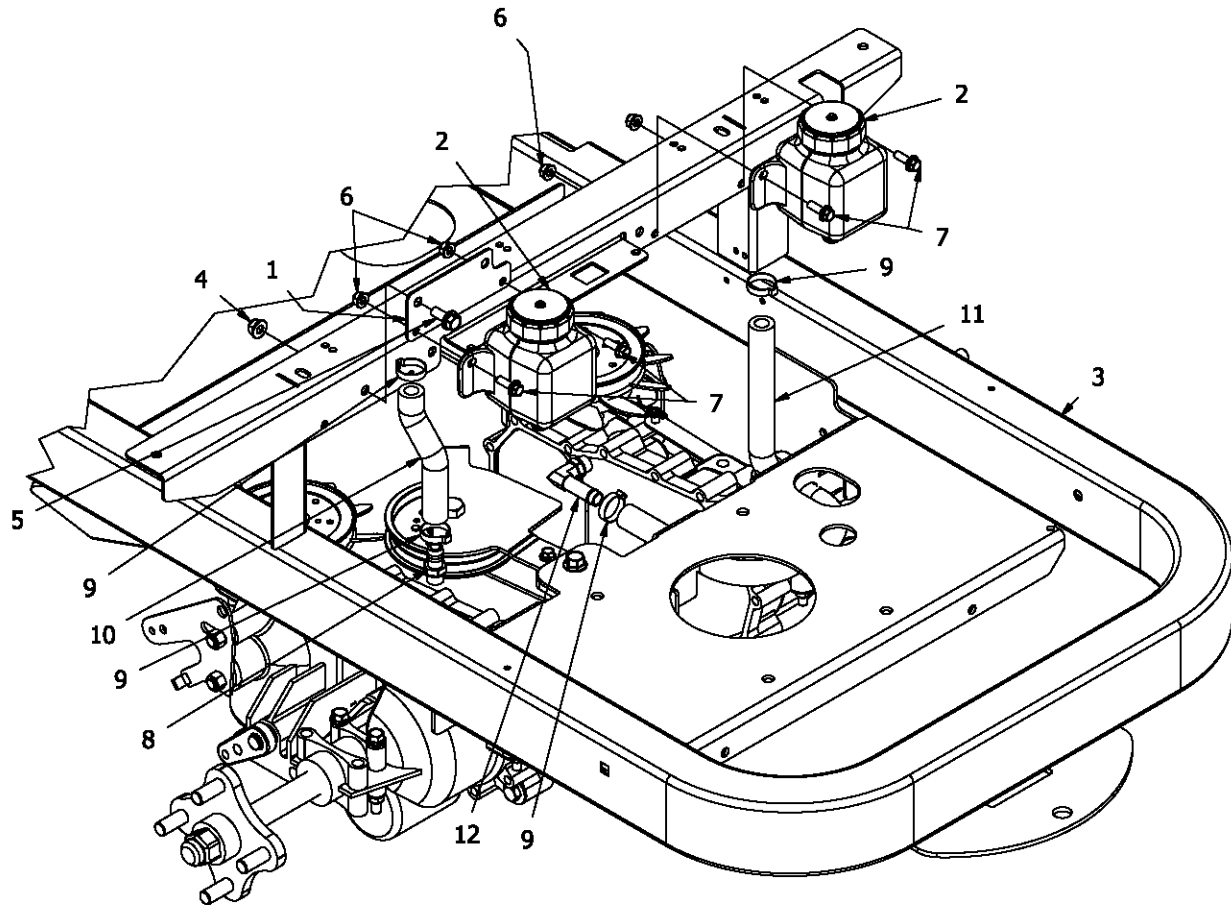
TRANSMISSION ASS'Y
& RELATED PARTS
{AVENUE & BOULEVARD}
(LOOKING AT BOTTOM)



IDLER ARM ASS'Y
(714-256A)

ITEM #	PART #	DESCRIPTION	ITEM #	PART #	DESCRIPTION
1	659-120P	HYDRO BRACE (AVENUE)	14	F-1521	1/2" WASHER, CUSTOM
--	659-173P	HYDRO BRACE (BOULEVARD)	15	F-1664	HHCS, 1/2-13 X 2-1/4", YZ, GR5
2	714-058P	PIN, IDLER	16	F-2048	3/8-16 X 12" HEX BOLT (AVENUE)
3	714-168P	TAB, DUMP VALVE, L (AVENUE)	--	F-2007	3/8-16 X 12" HEX BOLT (BOULEVARD)
--	714-098P	TAB, DUMP VALVE (BOULEVARD)	17	F-2063	NUT, 5/16-18 NYLOC, FLANGED
4	714-169P	TAB, DUMP VALVE, R (AVENUE)	18	F-2120	FHCS, 5/16-18 X 3/4", YZ, GR5
--	714-098P	TAB, DUMP VALVE (BOULEVARD)	19	F-2132	NUT, 1/4-20 NYLOC, FLANGED
5	714-256A	ASSY, IDLER ARM	20	F-2151	NUT, 3/8-16 NYLOC, FLANGED
6	714-353P	HEAT SHIELD	21	F-2152	NUT, 1/2-13 NYLOC, FLANGED
7	D-3730	FLANGED BUSHING	22	F-2177	FHCS, 5/16-18 X 2-1/2", YZ, GR5
8	D-3783-01	TRANSAXLE, EZT, RH, w/7" FAN (AVENUE)	23	F-2178	FHCS, 5/16-18 X 3", YZ, GR5
--	D-3954-01	TRANSAXLE, ZT2800 w/RTN, RH (BOULEVARD)	24	F-2216	FHCS, 1/4-20 X 1-3/4", YZ, GR5
9	D-3783-02	TRANSAXLE, EZT, LH, w/7" FAN (AVENUE)	25	F-2218	FHCS, 3/8-16 X 2-1/4", YZ, GR5
--	D-3954-02	TRANSAXLE, ZT2800 w/RTN, LH (BOULEVARD)	26	H-2907	SPRING, 5.43 X 1-1/2, TAPERED ENDS
10	D-3924	PULLEY, FLAT IDLER	27	H-2942	PLT, IDLER ARM, TOP
11	D-3953	WLDT, FRAME	28	H-2943	PLPT, IDLER ARM, BOTTOM
12	F-1009-03	3/8" FLAT WASHER	29	H-2962	SPACER, IDLER
13	F-1492	5/16-3/8 RUE RING	30	P-12918	DECAL, HYDRO BELT ROUTING

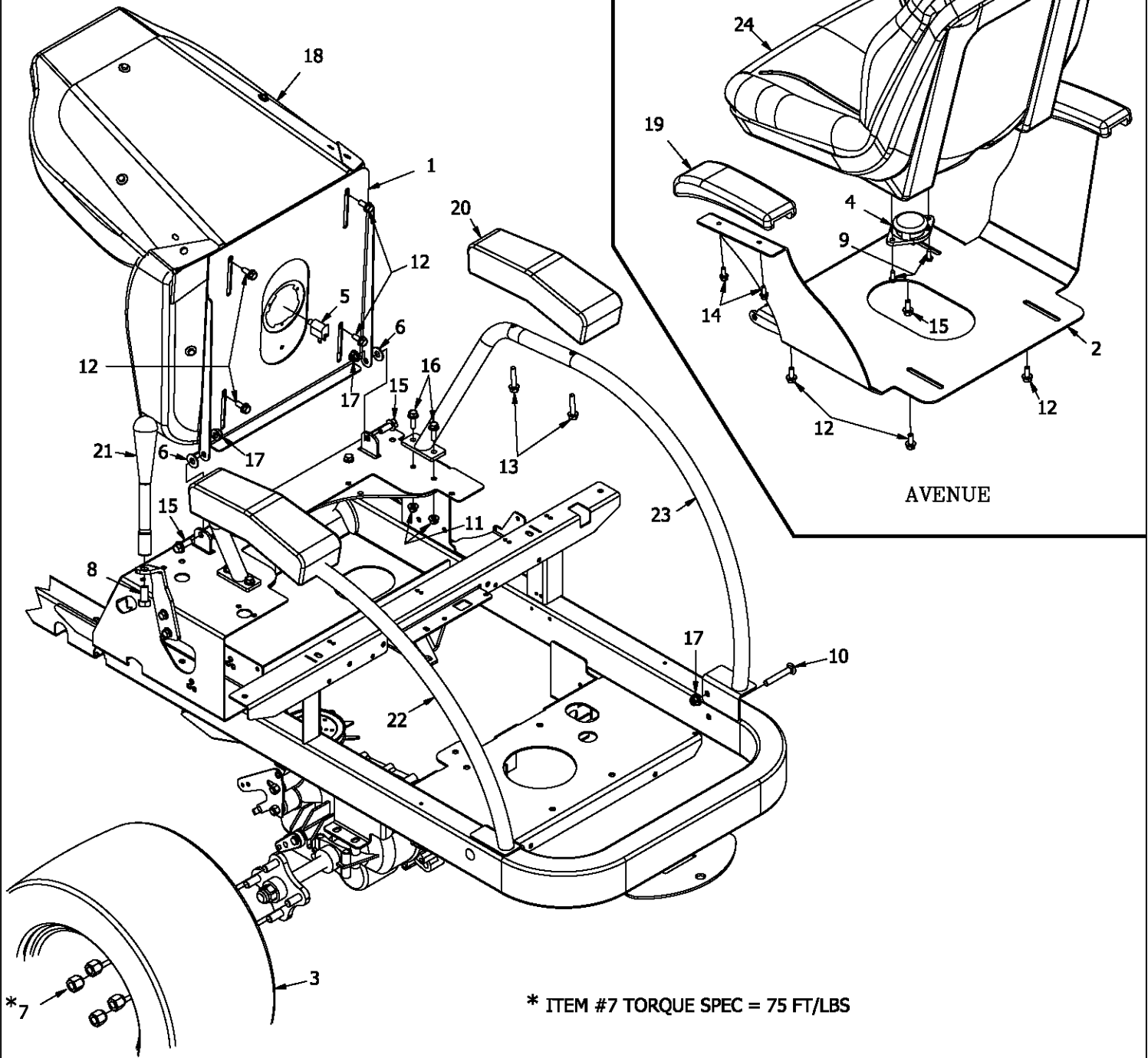
TRANSMISSION ASS'Y
& RELATED PARTS CON'T
{BOULEVARD}



PARTS NOTED ARE REQUIRED
ON BOULEVARD ONLY

ITEM #	PART #	DESCRIPTION	ITEM #	PART #	DESCRIPTION
1	714-318P	PLT, TANK MOUNT	7	F-2162	FHCS, 1/4-20 X 3/4", GR5, YZ
2	D-3791	HYDRO GEAR OIL TANK #52310 W/CAP	8	H-2517	VENT TUBE ADAPTER
3	D-3953	WLDT, FRAME	9	H-2535	7/8" CLAMP
4	F-2063	NUT, 5/16-18 NYLOC, FLANGED	10	H-2549	1/2" X 5" OIL HOSE
5	F-2120	FHCS, 5/16-18 X 0.75, YZ, GR5	11	H-2761	HOSE, 1/2" X 19"
6	F-2132	NUT, 1/4-20 NYLOC, FLANGED	12	H-2762	VENT TUBE ADAPTER

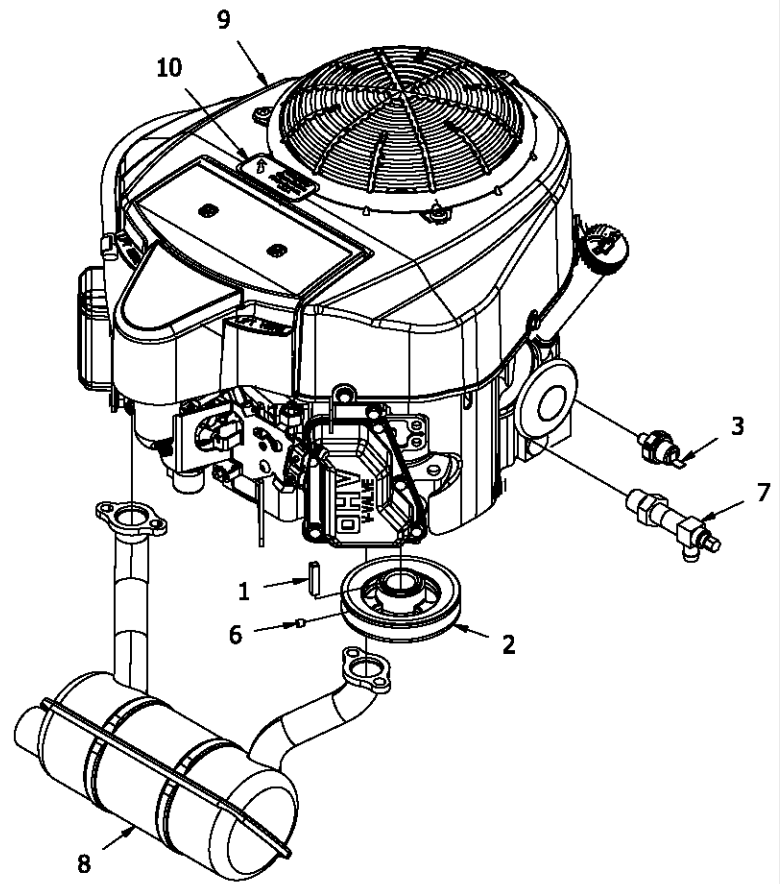
SEAT BASE & RELATED PARTS



* ITEM #7 TORQUE SPEC = 75 FT/LBS

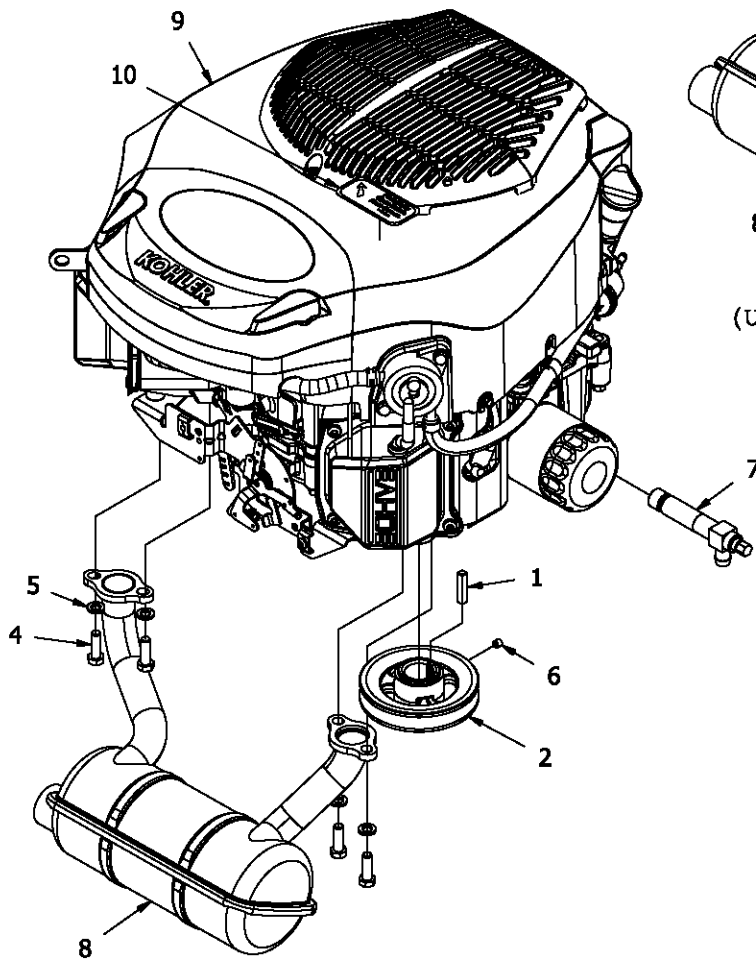
ITEM #	PART #	DESCRIPTION	ITEM #	PART #	DESCRIPTION
1	714-026P	PAN, SEAT MOUNT (BOULEVARD)	12	F-2120	FHCS, 5/16-18 X 0.75, YZ, GR5
2	714-315P	PAN, SEAT MOUNT (AVENUE)	13	F-2129	FHCS, 5/16-18X1.50, LOCK PATCH (BOULEVARD)
3	D-3353	TIRE ASSY, 20 X 10-10	14	F-2134	HFCS, 1/4-20X5/8", YZ, SELF TAPPING (AVENUE)
--	D-3729	TIRE ASSY, 18 X 8.5-8	15	F-2141	FHCS, 3/8-16 X 1", YZ, GR5
--	D-3787	TIRE ASSY, 20 X 12-10	16	F-2148	FHCS, 5/16-18 X 1.00, YZ, GR5 (BOULEVARD)
--	D-3870	TIRE ASSY, 18 X 9.50-8	17	F-2151	NUT, 3/8-16 NYLOC, FLANGED (BOULEVARD)
4	E-6374	SEAT SWITCH (AVENUE)	18	H-2604	SEAT (BOULEVARD)
5	E-6580	PLUNGER, SEAT SWITCH (BOULEVARD)	19	H-2753	PAD, ARM REST (AVENUE)
6	F-1009-03	3/8" FLAT WASHER	20	H-2763	PAD, ARM REST (BOULEVARD)
7	F-1499	1/2-20 LUG NUT	21	H-2964	HANDLE, JOYSTICK (BOULEVARD)
8	F-1702	HHCS, 1/2-20 X 1", YZ, GR5 (BOULEVARD)	22	H-2965	WLDT, ARM REST BAR, L (BOULEVARD)
9	F-1785	SCREW, WASHER HEAD, #14 X 3/4" (AVENUE)	23	H-2966	WLDT, ARM REST BAR, R (BOULEVARD)
10	F-1865	3/8-16X2-1/2" CARRIAGE BOLT (BOULEVARD)	24	H-2974	SEAT, MILSCO (AVENUE)
11	F-2063	NUT, 5/16-18 NYLOC, FLANGED (BOULEVARD)			

ENGINES



KAWASAKI 18HP FR600V

(USE THROTTLE CABLE H-2610 & CHOKE CABLE H-2287)

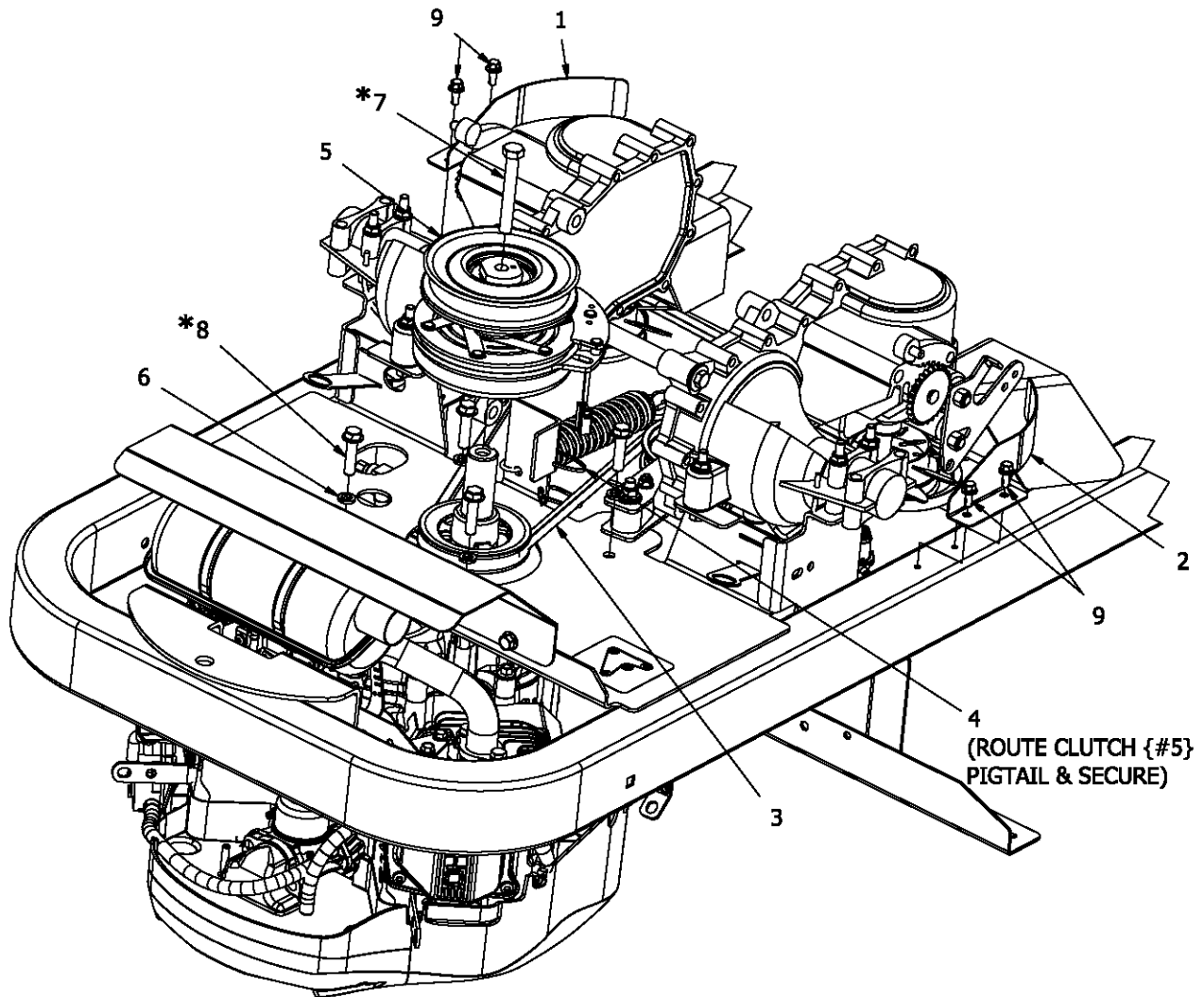


KOHLER 23HP KT730

(USE THROTTLE CABLE H-2611 & CHOKE CABLE H-2287)

ITEM #	PART #	DESCRIPTION	ITEM #	PART #	DESCRIPTION
1	621-113P	1/4"SQ X 1-1/4" KEY	7	H-2589	OIL DRIAN VALVE (KOHLER)
2	D-3929	MOTOR PULLEY (AVENUE)	--	H-2590	OIL DRIAN VALVE (KAWASAKI)
--	D-3935	MOTOR PULLEY (BOULEVARD)	8	H-2888	MUFFLER, KOHLER, COMPACT
3	E-6307	SWITCH, OIL PRESSURE	--	H-2906	MUFFLER, KAWASAKI, COMPACT
4	F-1015-15	5/16-18 X 1" CAPSCREW	9	M-5402	ENGINE, KAWASAKI, 18HP FR600V
5	F-1019-02	5/16" LOCKWASHER	--	M-5403	ENGINE, KOHLER 23HP KT730
6	F-1228	1/4-20 X 1/4" SET SCREW W/NYLON PATCH	10	P-10077-11	"CLEAN DEBRIS" DECAL

ENGINE & CLUTCH MOUNTING & RELATED PARTS

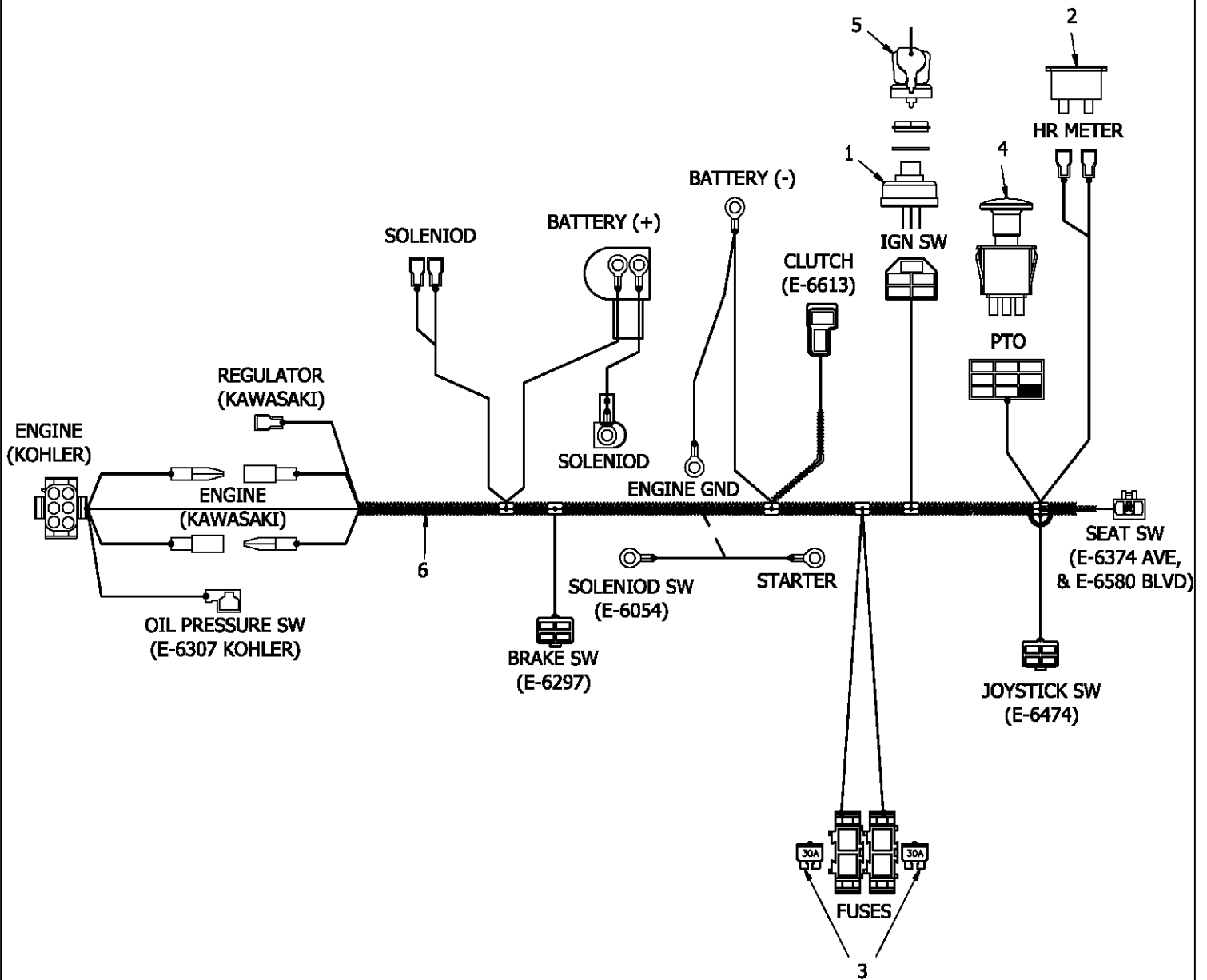


* ITEM #7 TORQUE SPEC = 60 FT/LBS

* ITEM #8 TORQUE SPEC = 35 FT/LBS

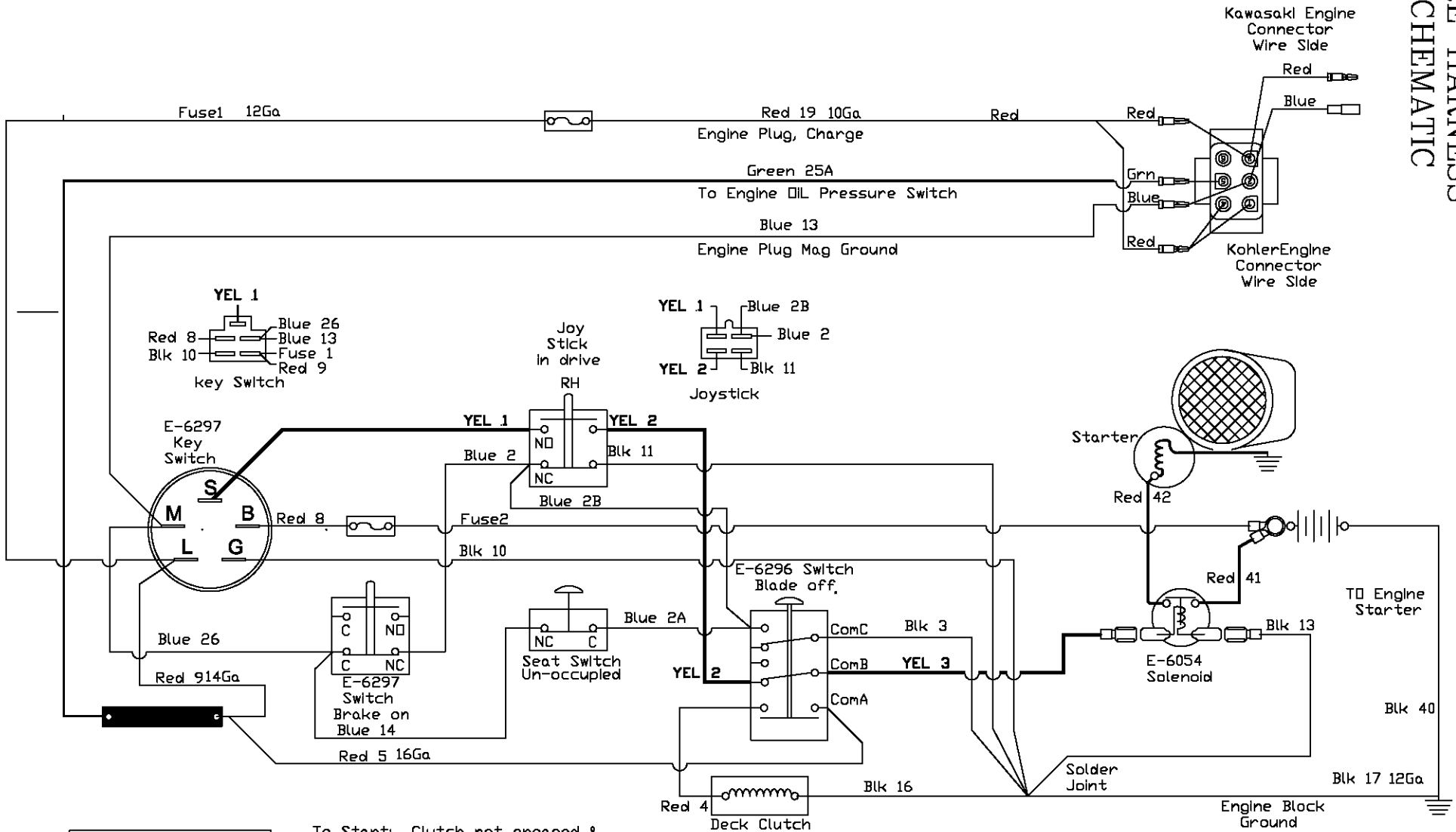
ITEM #	PART #	DESCRIPTION
1	714-056P	GUARD, FAN, R
2	714-057P	GUARD, FAN, L
3	D-3885	V-BELT, AP64 RAW EDGE LAM (AVENUE)
--	D-3891	V-BELT, AP65 RAW EDGE LAM (BOULEVARD)
4	E-5842	WIRE TIE
5	E-6613	MS, CLUTCH, 1" BORE, 125FT-LB
6	F-1019-03	3/8" LOCKWASHER
7	F-1766	7/16-20 X 3-1/4" CAPSCREW
8	F-2040	HHCS, THD FORM, 3/8-16X1-1/2" (KOHLER)
--	F-2125	FHCS, 3/8-16 X 1-1/4", YZ, GR5 (KAWASAKI)
9	F-2134	HFCS, 1/4-20 X 5/8", YZ, SELF TAPPING

WIRE HARNESS & RELATED PARTS



ITEM #	PART #	DESCRIPTION
1	E-5873	KEY SWITCH (INCLUDES #5)
2	E-5878	HOUR METER
3	E-6207	FUSE, #ATC-30
4	E-6403	PTO SWITCH
5	E-6445	KEY SET (INCLUDED IN #1)
6	E-6600	WIRE HARNESS, AVENUE & BOULEVARD

WIRE HARNESS SCHEMATIC



POSITION	CIRCUIT "MAKE"
1. OFF	G + M
2. RUN	B + L
3. START	B + L + S

To Start: Clutch not engaged & Steering Levers in Neutral
 Engine Kill: If Steering levers in drive & brake is on or seat un-occupied
 If Clutch is on and seat is not occupied

Start Circuit Yellow
 Safety Circuit Blue
 Power Circuit Red
 Ground Circuit Black
 Hr Mtr Circuit Green

Repair Parts Manual



AVENUE

150/A100

BOULEVARD

250/B200

Country Clipper Division
Shivvers Manufacturing Inc.
613 W. English St.
Corydon, IA 50060-0467
Ph. 641-872-2544
Fax. 641-872-1593