

Repair Parts Manual

COUNTRY CLIPPER® ZERO TURN MOWER

EDGE^{XLT}™ 460

Congratulations for buying a **Country Clipper** product. Your **Country Clipper** Zero Turn Radius Riding Mower was designed and built to provide long and trouble free service. Keep in mind that it, like any other mechanical device, can be potentially dangerous if used improperly, and hazard control and accident prevention are dependent upon the awareness, concern, prudence, and proper training of personnel involved in the operation, transport, maintenance, and storage of the equipment. Study this manual and pay special attention to the important Safety Precautions on pages 3-5. Following these instructions will help you continue to enjoy the trouble-free performance expected of the **Country Clipper** product.

COUNTRY CLIPPER

EDGE XLT-460

ZERO TURN RADIUS MOWER

TABLE OF CONTENTS

SECTION 1 – MOWER DECKS AND RELATED PARTS

1. 48" DECK ASSEMBLY
2. 52" DECK ASSEMBLY
3. 60" DECK ASSEMBLY
4. DECK SPINDLE ASSEMBLY
5. DOUBLE IDLER & RELATED PARTS (48" DECK)
6. DOUBLE IDLER & RELATED PARTS (52" DECK)
7. DOUBLE IDLER & RELATED PARTS (60" DECK)
8. STATIONARY IDLERS & RELATED PARTS
9. LIFT HANDLE ASSEMBLY & RELATED PARTS
10. LIFT ASSEMBLY & RELATED PARTS
11. TRANSMISSION IDLERS & RELATED PARTS

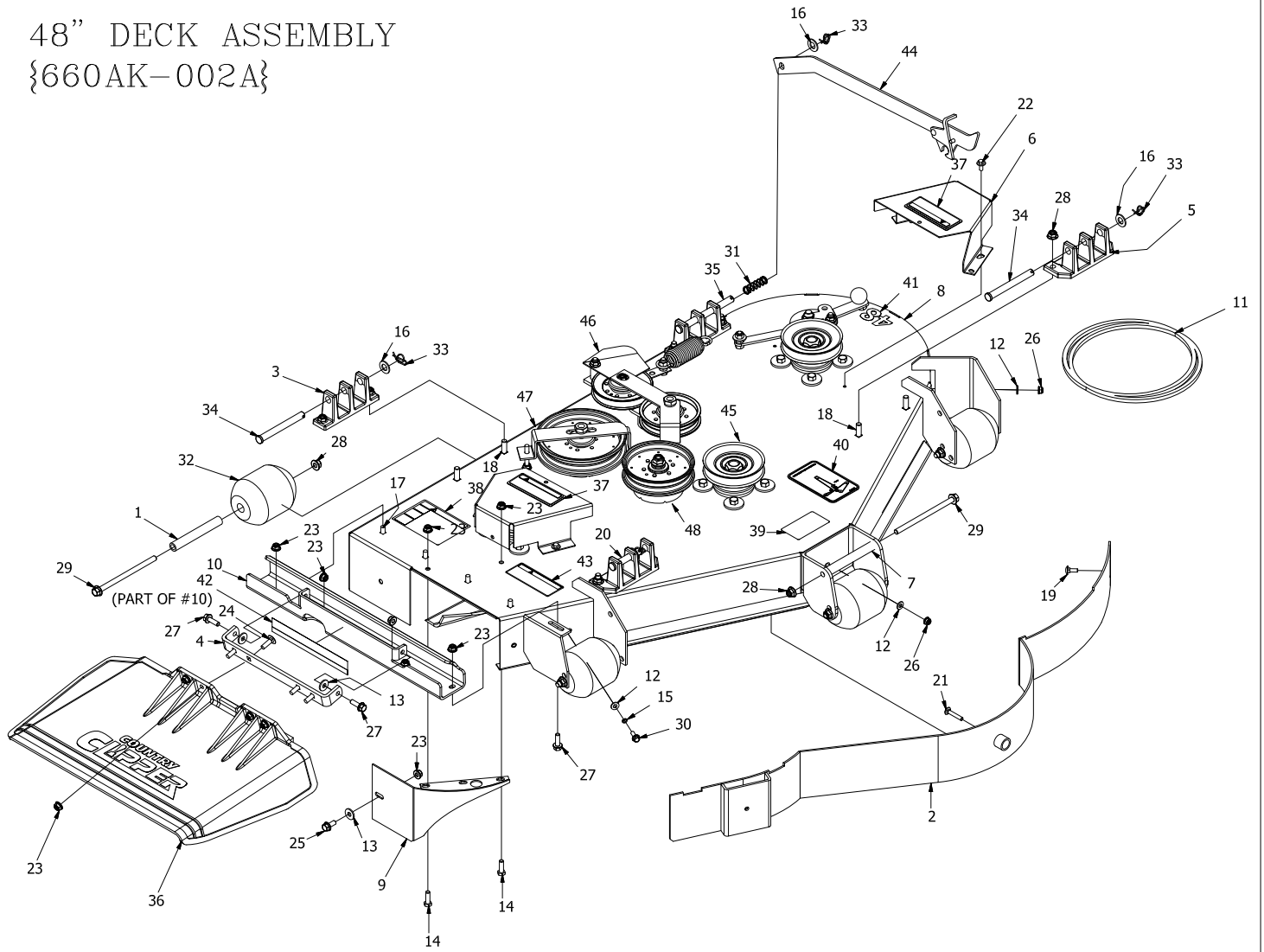
SECTION 2 – TRACTOR FRAME AND RELATED PARTS

12. CASTER WHEEL ASSEMBLY
13. FRAME SIDES & RELATED PARTS
14. FENDER ASSEMBLY
15. SEAT, FOOT DECK ASSEMBLY & RELATED PARTS
16. FRONT STEP ASSEMBLY

SECTION 3 – TRACTOR DRIVE AND RELATED PARTS

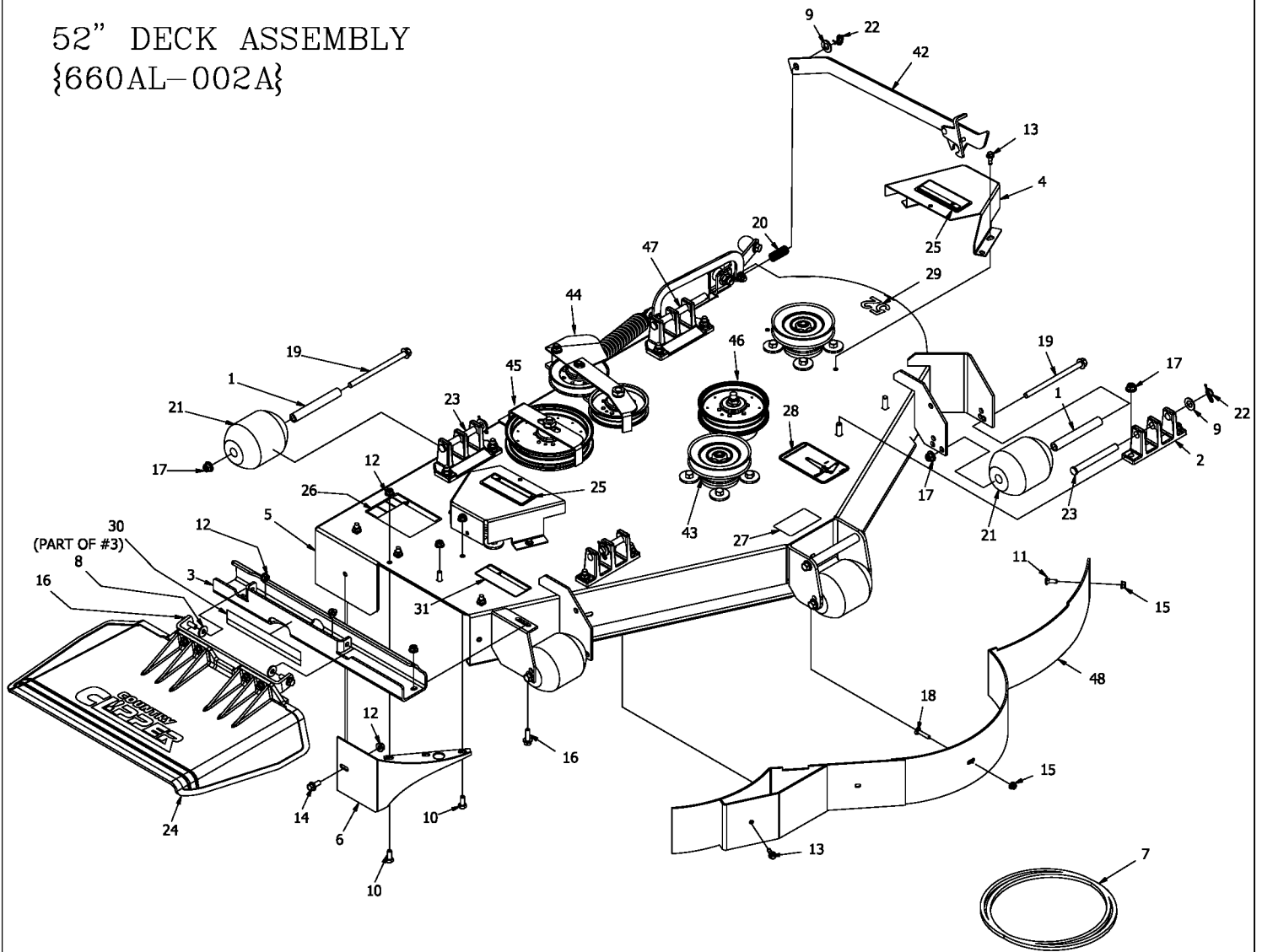
17. FUEL TANK ASSEMBLY
18. JOYSTICK STEERING CONTROL & RELATED PARTS
19. JOYSTICK ASSEMBLY (CON'T)
20. JOYSTICK STEERING CONTROL & RELATED PARTS (CON'T)
21. TWINSTICK STEERING CONTROL & RELATED PARTS
22. PARKING BRAKE ASSEMBLY & RELATED PARTS
23. MOTOR & TRANSMISSION ASS'Y & RELATED PARTS - 24HP KAWASAKI
24. E-6415 WIRE HARNESS ASS'Y & RELATED PARTS (JOYSTICK)
25. E-6416 WIRE HARNESS ASS'Y & RELATED PARTS (TWINSTICK)
26. E-6417 WIRE HARNESS ADAPTER & RELATED PARTS - KAWASAKI

48" DECK ASSEMBLY {660AK-002A}



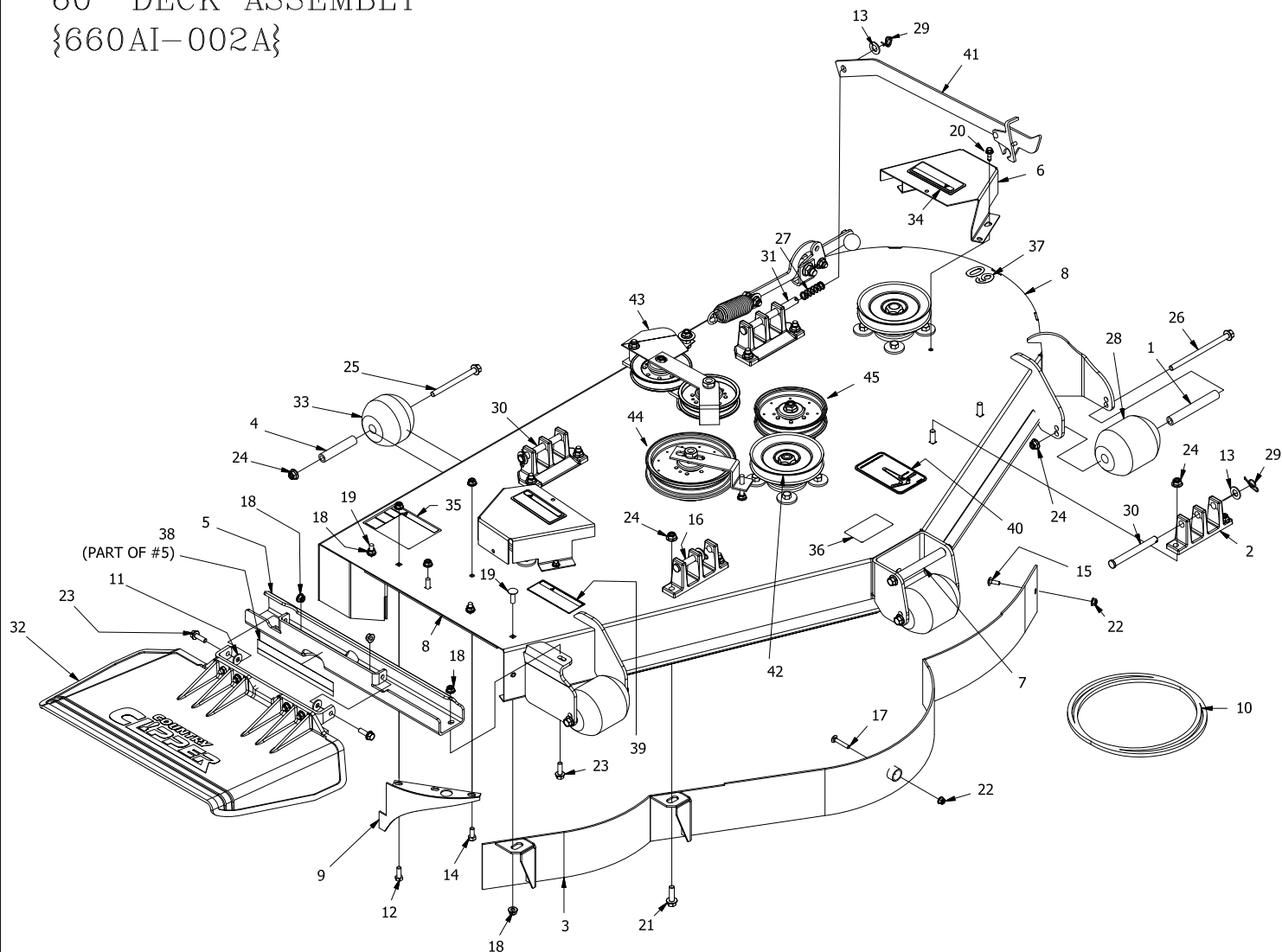
REF NO.	PART NO.	QTY.	DESCRIPTION	REF NO.	PART NO.	QTY.	DESCRIPTION
1	609-183P	5	BUSHING	26	F-2132	2	NUT, 1/4-20 NYLOC, FLANGED
2	629-241W	1	Baffle Wldt. 48"	27	F-2148	3	FHCS, 5/16-18 x 1.00, YZ, GR5
3	643-016W	2	Hanger Weldment	28	F-2151	17	Nut, 3/8-16 Nyloc, Flanged
4	643-110P	1	CHUTE HINGE	29	F-2161	6	FHCS, 3/8-16 x 6", YZ, GR5
5	651-009W	2	CASTING, HANGER, WIDE BASE	30	F-2162	1	FHCS, 1/4-20 x 3/4", GR5, YZ
6	660-146A	2	PULLEY COVER w/DECALS	31	F-2575	1	SPRING, COMP .656 X .052 X 1.97
7	660-162P	1	GRIP, STANDUP	32	H-1948	5	Roller, 3-3/4 DIA. x 4-13/16L
8	660-185A	1	48 LIGHT DECK w/DECALS	33	H-2239	4	1/2" Rue Ring
9	686-080W	1	SPLITTER BAFFLE	34	H-2240	2	1/2" x 4-1/2" Clevis Pin
10	700-136A	1	OUTLET STIFFENER w/DECAL	35	H-2718	1	1/2" x 5-1/2" Clevis Pin
11	D-3775-W	1	BELT, B-158	36	H-2723	1	Chute, Discharge, Small
12	F-1009-01	3	1/4" Flat Washer	--	643-111A	1	Chute, Assembly
13	F-1009-02	3	5/16" Flat Washer	37	P-10935	2	Decal, WARNING
14	F-1015-15	2	5/16-18 x 1" Capscrew	38	P-10941	1	DECAL "DANGER ROTATING BLADES"
15	F-1019-01	1	1/4" LockWasher	39	P-11413	1	DECAL, HOIST POINT
16	F-1521	9	1/2" WASHER, CUSTOM	40	P-11932	1	DECAL, JAZEE DECK BELT ROUTING
17	F-1671	4	5/16-18 x 3/4" CARRIAGE BOLT	41	P-11950	1	DECAL, DECK SIZE, 48
18	F-1672	8	3/8-16 x 1-1/4" Carraige Bolt	42	P-12496	1	DECAL, MISSING CHUTE
19	F-1823	1	Carriage Bolt, 1/4 X 3/4"	43	P-12706	1	WARNING DECAL, DISCHARGE CHUTE
20	F-1898	1	1/2 x 2-3/4" Clevis Pin	44	625-114A	1	DECK PROP ASS'Y, EDGE XLT
21	F-1935	1	CARRIAGE BOLT, 1/4 X 1-1/2"	45	-----	3	SPINDLE ASS'Y (SEE pg.4)
22	F-2030	4	1/4 x 5/8 Self Tapping Capscrew	46	-----	1	DOUBLE IDLER ASS'Y (SEE pg.5)
23	F-2063	15	Nut, 5/16-18 Nyloc, Flanged	47	-----	1	REAR IDLER ASS'Y (SEE pg.7)
24	F-2066	4	5/16-18 x 1" CARRIAGE BOLT,	48	-----	1	FRONT IDLER ASS'Y (SEE pg.7)
25	F-2120	1	FHCS, 5/16-18 x 0.75, YZ, GR5				

52" DECK ASSEMBLY {660AL-002A}



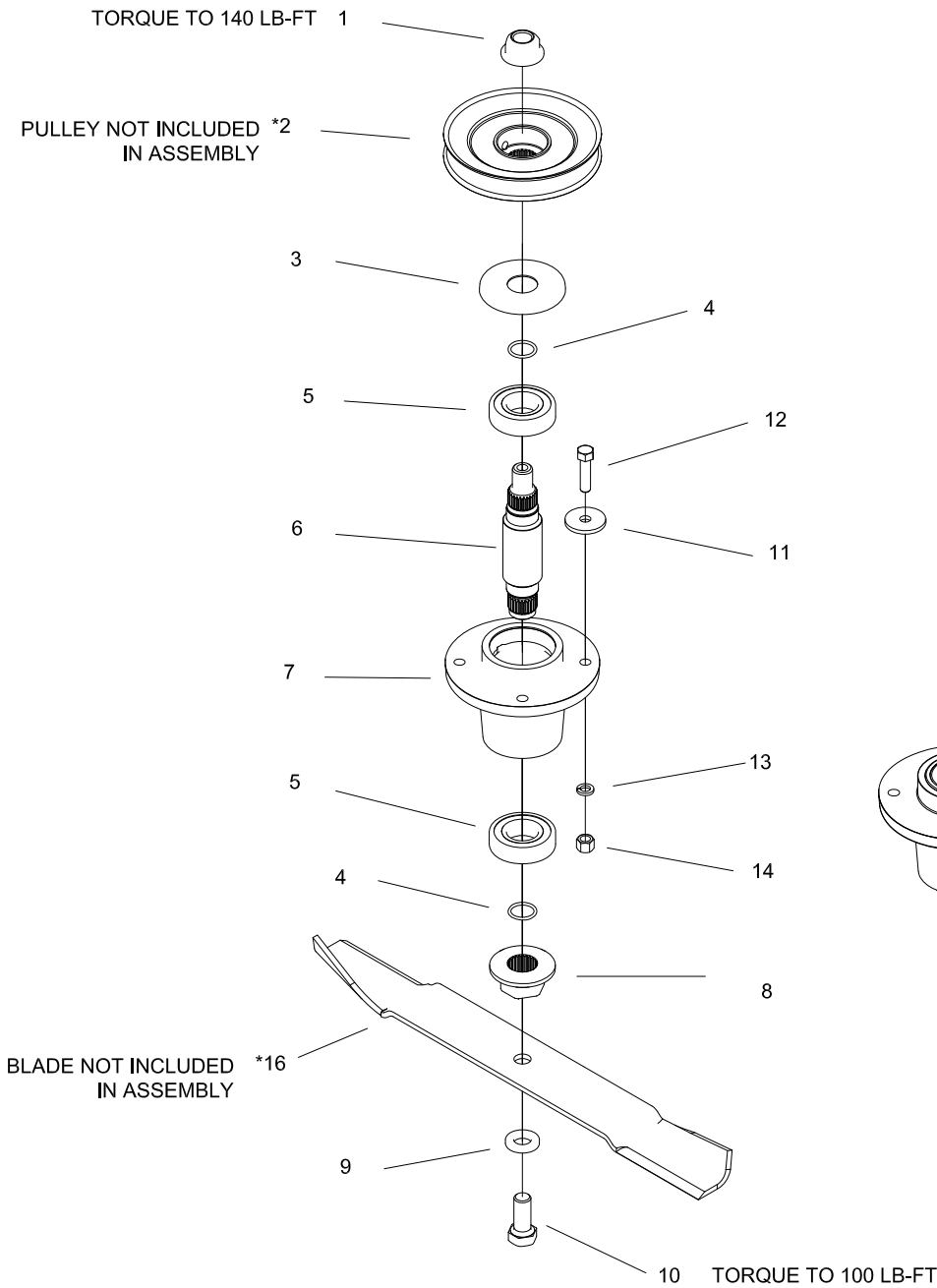
REF NO.	PART NO.	QTY.	DESCRIPTION	REF NO.	PART NO.	QTY.	DESCRIPTION
1	609-183P	5	BUSHING	20	F-2575	1	SPRING, COMP .656 X .052 X 1.97
2	643-016W	2	Hanger Weldment	21	H-1948	5	Roller, 3-3/4 DIA. x 4-13/16L
3	643-135A	1	OUTLET STIFFENER w/DECAL	22	H-2239	4	1/2" Rue Ring
4	660-146A	2	PULLEY COVER w/DECALS	23	H-2240	2	1/2" x 4-1/2" Clevis Pin
5	660-186A	1	52 LIGHT DECK w/DECALS	24	643-111A	1	Chute, Discharge, Small
6	686-080W	1	SPLITTER BAFFLE	25	P-10935	2	Decal, WARNING
7	D-3914	1	BELT, BANDO " B-180"	26	P-10941	1	DECAL "DANGER ROTATING BLADES"
8	F-1009-02	2	5/16" Flat Washer	27	P-11413	1	DECAL, HOIST POINT
9	F-1521	6	1/2" WASHER, CUSTOM	28	P-11932	1	DECAL, JAZEE DECK BELT ROUTING
10	F-1546	2	5/16-18 x 3/4" Capscrew	29	P-11951	1	DECAL, DECK SIZE, 52
11	F-1823	1	Carriage Bolt, 1/4 X 3/4"	30	P-12496	1	DECAL, MISSING CHUTE
12	F-2063	15	Nut, 5/16-18 Nyloc, Flanged	31	P-12706	1	WARNING DECAL, DISCHARGE CHUTE
13	F-2119	5	FHCS, 1/4-20 x 0.75, YZ, LOCK PATCH, GR5	42	625-114A	1	DECK PROP ASS'Y, EDGE XLT
14	F-2120	1	FHCS, 5/16-18 x 0.75, YZ, GR5	43	-----	1	SPINDLE ASS'Y (SEE pg.4)
15	F-2132	2	NUT, 1/4-20 NYLOC, FLANGED	44	-----	1	DOUBLE IDLER ASS'Y (SEE pg.5)
16	F-2148	3	FHCS, 5/16-18 x 1.00, YZ, GR5	45	-----	1	REAR IDLER ASS'Y (SEE pg.7)
17	F-2151	21	Nut, 3/8-16 Nyloc, Flanged	46	-----	1	FRONT IDLER ASS'Y (SEE pg.7)
18	F-2157	1	CARRIAGE BOLT, 1/4 X 1-1/4"	47	H-2718	1	1/2" x 5-1/2" Clevis Pin
19	F-2161	6	FHCS, 3/8-16 x 6", YZ, GR5	48	629-783W	1	WLDT, DUST BAFFLE, 52" MED

60" DECK ASSEMBLY {660AI-002A}



REF NO.	PART NO.	QTY.	DESCRIPTION	REF NO.	PART NO.	QTY.	DESCRIPTION
1	609-183P	3	BUSHING	25	F-2160	2	FHCS, 3/8-16 x 4 1/2", YZ, GR5
2	643-016W	2	Hanger Weldment	26	F-2161	4	FHCS, 3/8-16 x 6", YZ, GR5
3	643-104W	1	60" DUST BAFFLE WELDMENT	27	F-2575	1	SPRING, COMP .656 X .052 X 1.97
4	643-126P	2	BUSHING	28	H-1948	3	Roller, 3-3/4 DIA. x 4-13/16L
5	643-135A	1	OUTLET STIFFENER w/DECAL	29	H-2239	4	1/2" Rue Ring
6	660-146A	2	PULLEY COVER w/DECALS	30	H-2240	2	1/2" x 4-1/2" Clevis Pin
7	660-162P	1	GRIP, STANDUP	31	H-2718	1	1/2" x 5-1/2" Clevis Pin
8	660-187A	1	60 LIGHT DECK w/DECALS	32	H-2723	1	Chute, Discharge, Small
9	686-006W	1	SPLITTER BAFFLE	33	H-2772	2	Roller, 3-3/4 DIA. x 3 1/4"L
10	D-3914	1	BELT, BANDO " B-180"	34	P-10935	2	Decal, WARNING
11	F-1009-02	2	5/16" Flat Washer	35	P-10941	1	DECAL "DANGER ROTATING BLADES"
12	F-1015-14	1	5/16-18 x 7/8" Capscrew	36	P-11413	1	DECAL, HOIST POINT
13	F-1521	6	1/2" WASHER, CUSTOM	37	P-11952	1	DECAL, DECK SIZE, 60
14	F-1546	1	5/16-18 x 3/4" Capscrew	38	P-12496	1	DECAL, MISSING CHUTE
15	F-1823	1	Carriage Bolt, 1/4 X 3/4"	39	P-12706	1	WARNING DECAL, DISCHARGE CHUTE
16	F-1889	1	1/2 x 2-5/8" Clevis Pin	40	P-12837	1	DECAL, DECK BELT ROUTING
17	F-1935	1	CARRIAGE BOLT, 1/4 X 1-1/2"	41	625-114A	1	DECK PROP ASS'Y, EDGE XLT
18	F-2063	15	Nut, 5/16-18 Nyloc, Flanged	42	-----	1	SPINDLE ASS'Y (SEE pg.4)
19	F-2066	8	5/16-18 x 1" CARRIAGE BOLT,	43	-----	1	DOUBLE IDLER ASS'Y (SEE pg.5)
20	F-2119	4	FHCS, 1/4-20 x 0.75, YZ, LOCK PATCH, GR5	44	-----	1	REAR IDLER ASS'Y (SEE pg.7)
21	F-2125	2	FHCS, 3/8-16 x 1.25, YZ, GR5	45	-----	1	FRONT IDLER ASS'Y (SEE pg.7)
22	F-2132	2	NUT, 1/4-20 NYLOC, FLANGED				
23	F-2148	3	FHCS, 5/16-18 x 1.00, YZ, GR5				
24	F-2151	20	Nut, 3/8-16 Nyloc, Flanged				

DECK SPINDLE ASSEMBLY 629FN-001A

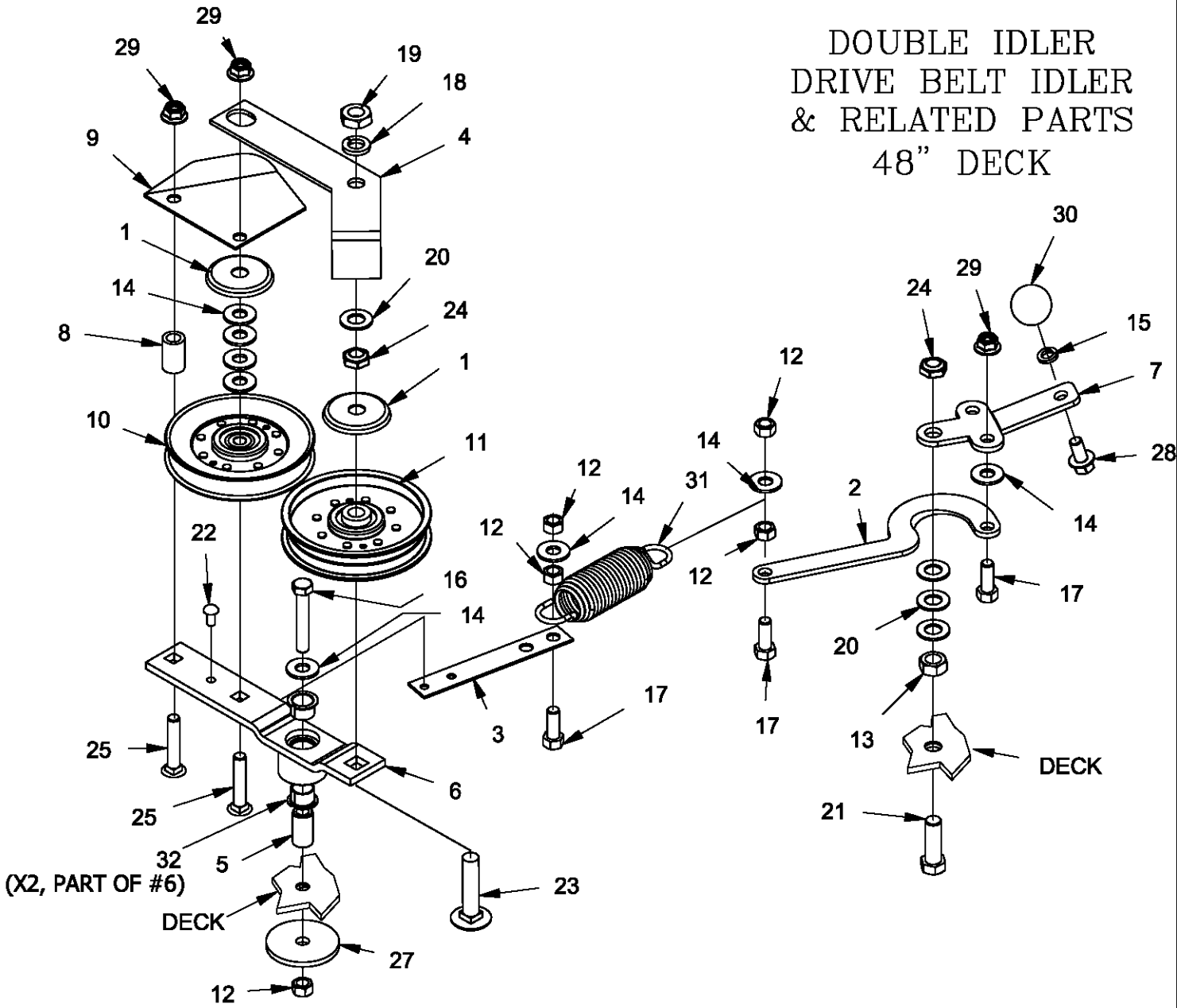


15 (APPLY THIN LAYER OF CHEVRON RYKOTAC GREASE TO THE TOP SURFACES OF THE BEARING AND HOUSING PRIOR TO INSTALLING ITEM #3 (BEARING CAP).

NEW MOWERS ARE SHIPPED WITH 3 to 4 oz OF CHEVRON SRI NLGI 2 GREASE INSIDE EACH SPINDLE HOUSING.

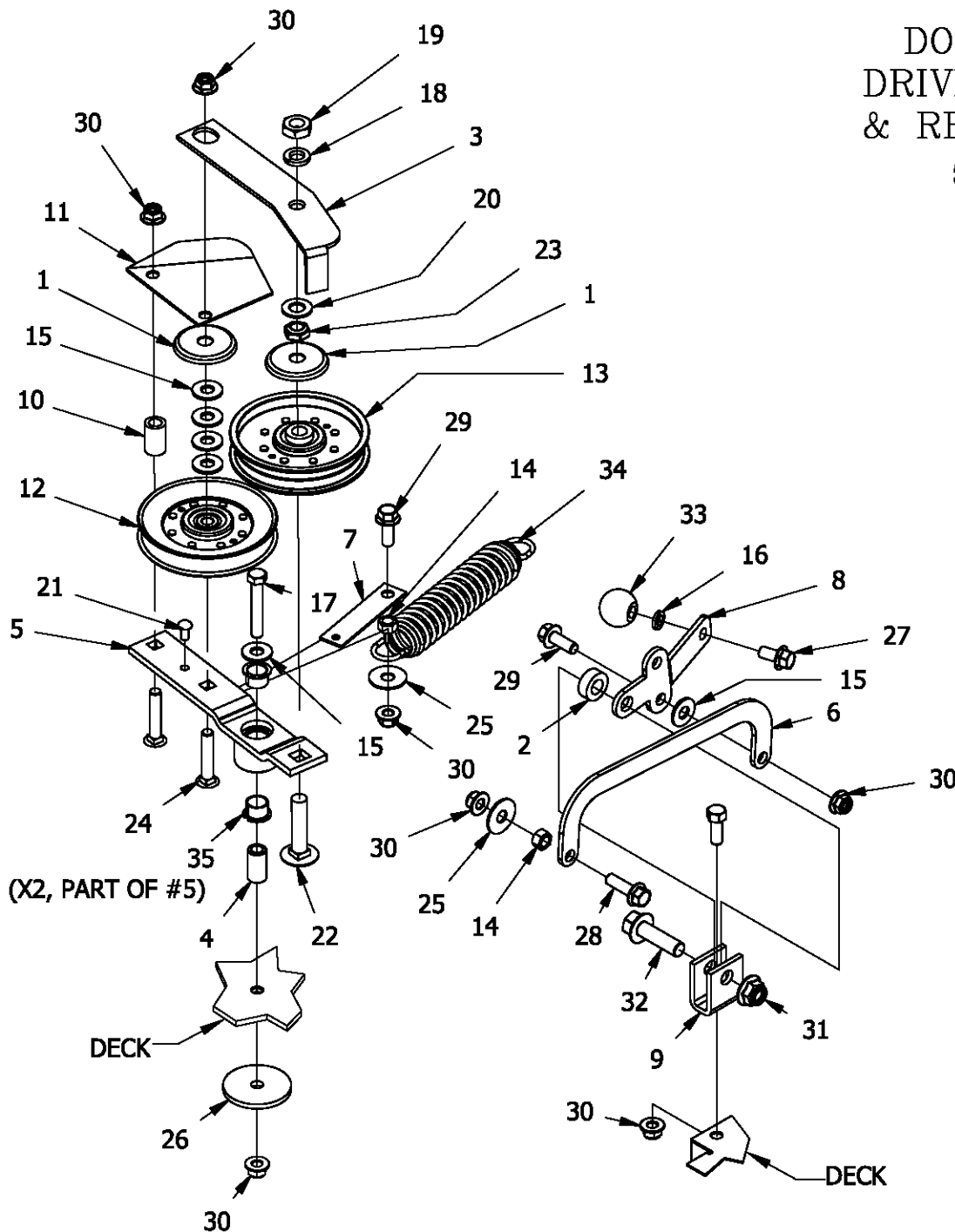
REF NO.	PART NO.	QTY.	DESCRIPTION	REF NO.	PART NO.	QTY.	DESCRIPTION
1	F-2078	1	3/4-6 TOP LOCK NUT	14	F-1573	4	3/8-24 LOCK NUT
2	668-037P	*	48" DECK PULLEY	15	H-2707	1	GREASE PACKET
*	668-038P	*	52" DECK PULLEY	16	H-2882	1	BLADE, HIGH LIFT, 17" CUT 48"
*	668-039P	*	60" DECK PULLEY	-	H-2883	-	BLADE, HIGH LIFT, 18 3/8" CUT 52"
3	609-292P	1	CAP, BEARING	-	H-2885	-	BLADE, HIGH LIFT, 21" CUT 60"
4	H-2639	2	O'RING, RUBBER	OPTIONAL BLADES			
5	D-3867	2	BEARING, #6206	-	H-2659	-	BLADE, LOW LIFT, 17" CUT 48"
6	609-289P	1	SHAFT, SPINDLE	-	H-2660	-	BLADE, LOW LIFT, 18 3/8" CUT, 52"
7	609-285P	1	HOUSING, SPINDLE	-	H-2661	-	BLADE, LOW LIFT, 21" CUT, 60"
8	609-288P	1	BLADE DRIVER	-	H-2665	-	BLADE, GATOR, 17" CUT 48"
9	660-099P	1	BLADE WASHER	-	H-2666	-	BLADE, GATOR, 18 3/8" CUT 52"
10	F-2073	1	5/8-11 X 1.5 HHCS GR. 8	-	H-2667	-	BLADE, GATOR, 21" CUT 60"
11	609-034P	4	SPINDLE SPACER, WASHER				
12	F-1572	4	3/8-24 X 1.5 CAP SCREW				
13	F-1019-03	4	3/8 LOCK WASHER				

DOUBLE IDLER DRIVE BELT IDLER & RELATED PARTS 48" DECK



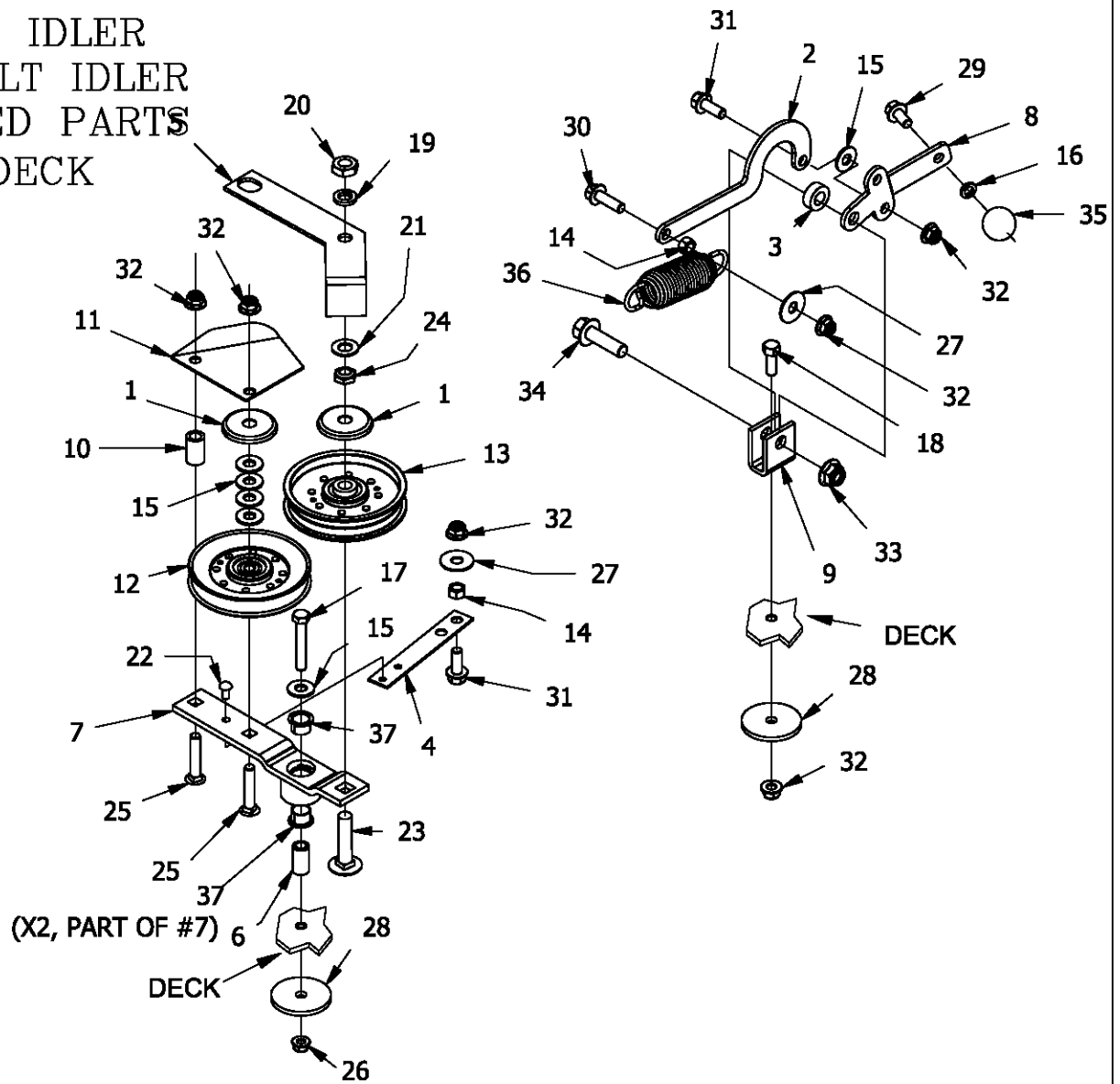
REF NO.	PART NO.	QTY.	DESCRIPTION	REF NO.	PART NO.	QTY.	DESCRIPTION
1	620-201P	4	WASHER, BEARING CAP	17	F-1394	3	3/8-16 x 1" Capscrew
2	660-031P	1	Belt Tightner Arm	18	F-1464	2	1/2" LOCKWASHER
3	660-081P	1	EXTENSION FOR SPRING	19	F-1489	2	1/2-13 Hex Jam Nut
4	660-110P	1	BELT KEEPER, B BELT	20	F-1521	9	1/2" WASHER, CUSTOM
5	660-135P	1	MOUNTING PIN	21	F-1526	1	1/2-13 x1-1/2" Capscrew
6	660-147A	1	IDLER ARM ASSEMBLY	22	F-1733	1	1/4" x 1/2" DRIVE SCREW
7	660-184P	1	HANDLE, BELT TENSIONER	23	F-1822	1	1/2-13 X 2-1/4" CARRIAGE BOLT
8	668-021P	1	SPACER, BELT GUARD	24	F-1966	3	1/2-13 THIN NYLOC NUT
9	668-029P	1	BELT GUARD	25	F-1976	2	3/8-16 x 2" Carraige Bolt
10	D-3923	1	PULLEY, V-IDLER, 4.59 OD, AB, NTN	26	F-2063	15	Nut, 5/16-18 Nyloc, Flanged
11	D-3924	1	PULLEY, FLAT IDLER, NTN, DBL INSERT	27	F-2102	1	WASHER.406ID X 2.25OD X 7GA THK
12	F-1005-03	5	3/8-16 Stover Nut	28	F-2124	1	FHCS, 3/8-16 x 0.75, YZ, GR5
13	F-1005-05	1	1/2-13 Stover Nut	29	F-2151	17	Nut,3/8-16 Nyloc, Flanged
14	F-1009-03	8	3/8" Flat Washer	30	H-2405	1	BALL, 1-1/4"
15	F-1019-03	13	3/8" LOCKWASHER	31	H-2619	1	SPRING,5 X 1-1/2,TAPERED ENDS
16	F-1268	1	3/8-16 x2-1/4" Capscrew	32	D-3730	2	FLANGED BUSHING

DOUBLE IDLER DRIVE BELT IDLER & RELATED PARTS 52" DECK



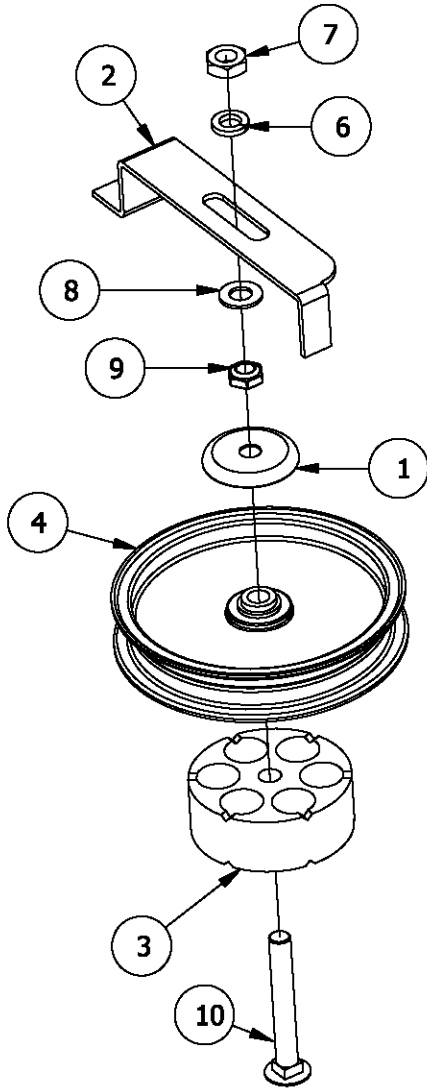
REF NO.	PART NO.	QTY.	DESCRIPTION	REF NO.	PART NO.	QTY.	DESCRIPTION
1	620-201P	4	WASHER, BEARING CAP	19	F-1489	2	1/2-13 Hex Jam Nut
2	660-038P	1	3/8" Spacer	20	F-1521	6	1/2" WASHER, CUSTOM
3	660-107P	1	BELT KEEPER	21	F-1733	1	1/4" x 1/2" DRIVE SCREW
4	660-135P	1	MOUNTING PIN	22	F-1822	1	1/2-13 X 2-1/4" CARRIAGE BOLT
5	660-147A	1	IDLER ARM ASSEMBLY	23	F-1966	2	1/2-13 THIN NYLOC NUT
6	660-172P	1	LINK, BELT TENSION	24	F-1976	2	3/8-16 x 2" Carriage Bolt
7	660-173P	1	SPRING EXTENSION	25	F-2083	2	WASHER, 3/8 FENDER
8	660-184P	1	HANDLE, BELT TENSIONER	26	F-2102	1	WASHER.406ID X 2.25OD X 7GA THK
9	661-015P	1	SHACKLE	27	F-2124	1	FHCS, 3/8-16 x 0.75, YZ, GR5
10	668-021P	1	SPACER, BELT GUARD	28	F-2125	1	FHCS, 3/8-16 x 1.25, YZ, GR5
11	668-029P	1	BELT GUARD	29	F-2141	2	FHCS, 3/8-16 x 1", YZ, GR5
12	D-3923	1	PULLEY, V-IDLER, 4.59 OD, AB, NTN	30	F-2151	21	Nut,3/8-16 Nyloc, Flanged
13	D-3924	1	PULLEY, FLAT IDLER, NTN, DBL INSERT	31	F-2152	2	Nut,1/2-13 Nyloc, Flanged
14	F-1005-03	2	3/8-16 Stover Nut	32	F-2154	1	FHCS, 1/2-13 x1-3/4", YZ, GR5
15	F-1009-03	6	3/8" Flat Washer	33	H-2405	1	BALL, 1-1/4"
16	F-1019-03	13	3/8" LOCKWASHER	34	H-2619	1	SPRING,5 X 1-1/2,TAPERED ENDS
17	F-1268	1	3/8-16 x2-1/4" Capscrew	35	D-3730	2	FLANGED BUSHING
18	F-1464	2	1/2" LOCKWASHER				

DOUBLE IDLER DRIVE BELT IDLER & RELATED PARTS 60" DECK

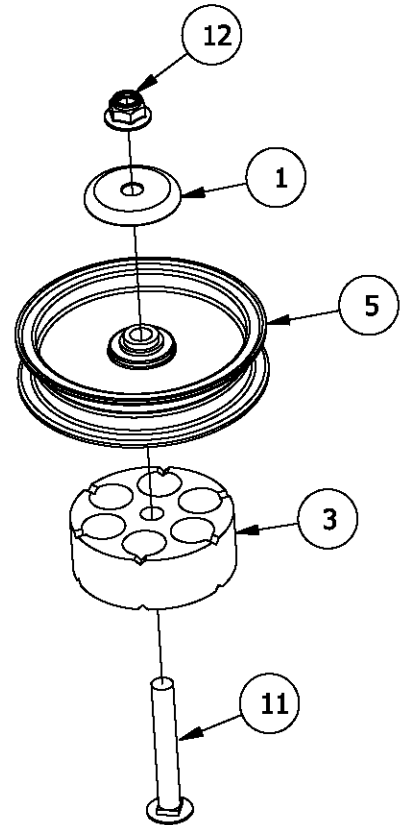


REF NO.	PART NO.	QTY.	DESCRIPTION	REF NO.	PART NO.	QTY.	DESCRIPTION
1	620-201P	4	WASHER, BEARING CAP	20	F-1489	2	1/2-13 Hex Jam Nut
2	660-031P	1	Belt Tightner Arm	21	F-1521	6	1/2" WASHER, CUSTOM
3	660-038P	1	3/8" Spacer	22	F-1733	1	1/4" x 1/2" DRIVE SCREW
4	660-081P	1	EXTENSION FOR SPRING	23	F-1822	1	1/2-13 X 2-1/4" CARRIAGE BOLT
5	660-110P	1	BELT KEEPER, B BELT	24	F-1966	2	1/2-13 THIN NYLOC NUT
6	660-135P	1	MOUNTING PIN	25	F-1976	2	3/8-16 x 2" Carriage Bolt
7	660-147A	1	IDLER ARM ASSEMBLY	26	F-2063	15	Nut, 5/16-18 Nyloc, Flanged
8	660-184P	1	HANDLE, BELT TENSIONER	27	F-2083	2	WASHER, 3/8 FENDER
9	661-015P	1	SHACKLE	28	F-2102	2	WASHER.406ID X 2.25OD X 7GA THK
10	668-021P	1	SPACER, BELT GUARD	29	F-2124	1	FHCS, 3/8-16 x 0.75, YZ, GR5
11	668-029P	1	BELT GUARD	30	F-2125	2	FHCS, 3/8-16 x 1.25, YZ, GR5
12	D-3923	1	PULLEY, V-IDLER, 4.59 OD, AB, NTN	31	F-2141	2	FHCS, 3/8-16 x 1", YZ, GR5
13	D-3924	1	PULLEY, FLAT IDLER, NTN, DBL INSERT	32	F-2151	20	Nut, 3/8-16 Nyloc, Flanged
14	F-1005-03	2	3/8-16 Stover Nut	33	F-2152	2	Nut, 1/2-13 Nyloc, Flanged
15	F-1009-03	6	3/8" Flat Washer	34	F-2154	1	FHCS, 1/2-13 x1-3/4", YZ, GR5
16	F-1019-03	13	3/8" LOCKWASHER	35	H-2405	1	BALL, 1-1/4"
17	F-1268	1	3/8-16 x2-1/4" Capscrew	36	H-2619	1	SPRING, 5 X 1-1/2, TAPERED ENDS
18	F-1394	1	3/8-16 x 1" Capscrew	37	D-3730	1	FLANGED BUSHING
19	F-1464	2	1/2" LOCKWASHER				

RIGHT REAR STATIONARY IDLER ASSEMBLY

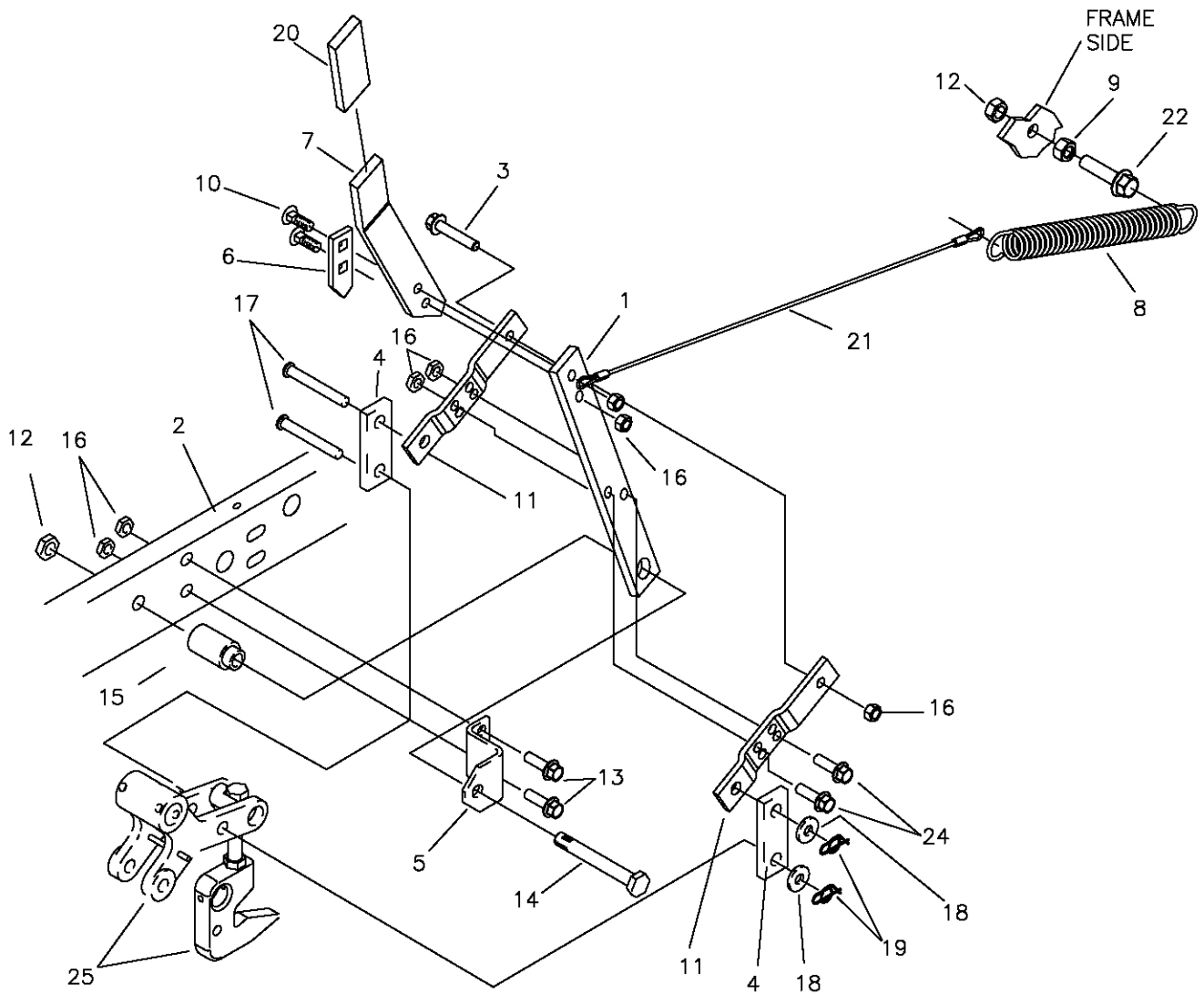


FRONT STATIONARY IDLER ASSEMBLY



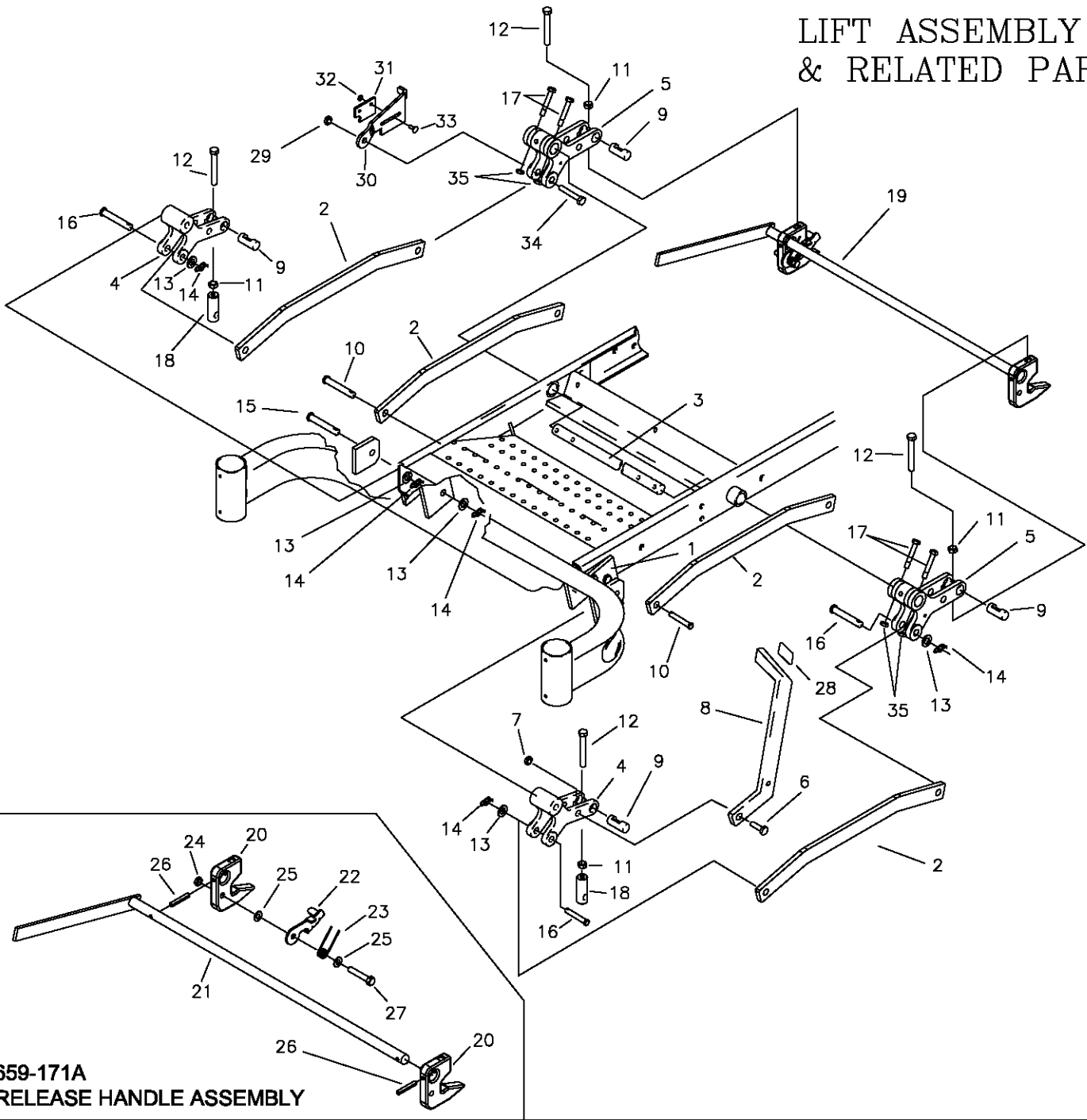
REF NO.	PART NO.	QTY.	DESCRIPTION	REF NO.	PART NO.	QTY.	DESCRIPTION
1	620-201P	4	WASHER, BEARING CAP	7	F-1489	2	1/2-13 Hex Jam Nut
2	660-112P	1	BELT KEEPER	8	F-1521	6	1/2" WASHER, CUSTOM
3	660-148P	2	SPACER, IDLER MOUNT	9	F-1966	2	1/2-13 THIN NYLOC NUT
4	D-3903	1	PULLEY, FLAT IDLER, 6"	10	F-2079	1	CARRIAGE BOLT 1/2-13 X 3-3/4"
5	D-3904	1	PULLEY, FLAT IDLER, 5"	11	F-2106	1	1/2-13 X 3-1/2" CARRIAGE BOLT
6	F-1464	2	1/2" LOCKWASHER	12	F-2152	2	Nut, 1/2-13 Nyloc, Flanged

LIFT HANDLE ASSEMBLY & RELATED PARTS



REF NO.	PART NO.	QTY.	DESCRIPTION	REF NO.	PART NO.	QTY.	DESCRIPTION
1	709-102P	1	LIFT HANDLE, LOWER	15	642-095P	1	HANDLE PIVOT PIN
2	659-022W	1	FRAME WELDMENT, LH.	16	F-1005-03	2	NUT, 3/8-16 LOCKNUT (STOVER)
3	F-2126	1	3/8-16 X 2" CAPSCREW	17	F-1889	2	CLEVIS PIN, 1/2 X 2 5/8"
4	642-061P	2	HANDLE LINK	18	F-1521	2	1/2" FLAT WASHER
5	642-041P	1	HANDLE PIVOT BRACKET	19	H-2239	2	RUE RING, 1/2"
6	642-127P	1	TOP PEG LATCH PLATE	20	H-2324	1	VINYL GRIP, 3/8 X 1 1/2"
7	659-355P	1	LIFY HANDLE, UPPER	21	H-2460	1	SPRING EXTENSION CABLE
8	H-1610	1	SPRING, 1 1/2" OD. X 8"	22	F-2128	1	FHCS 1/2-13 X 2" GR. 5
9	F-1462	1	NUT, 1/2-20 JAM	23	F-2151	5	NUT, 3/8-16, NYLOC FLANGED
10	F-1672	2	CARRIAGE BOLT, 3/8-16 X 1 1/4"	24	F-2147	2	FHCS 3/8-16 X 1-1/2", YZ GR. 5
11	642-060P	2	SPRING ANCHOR PLATE	25	-----	-	SEE PAGE 9
12	F-2152	2	NUT, 1/2-13, NYLOC FLANGED				
13	F-2125	2	1/2-13 X 1 1/4" GR. 5				
14	F-1439	1	1/2-13 X 3" GR. 5				

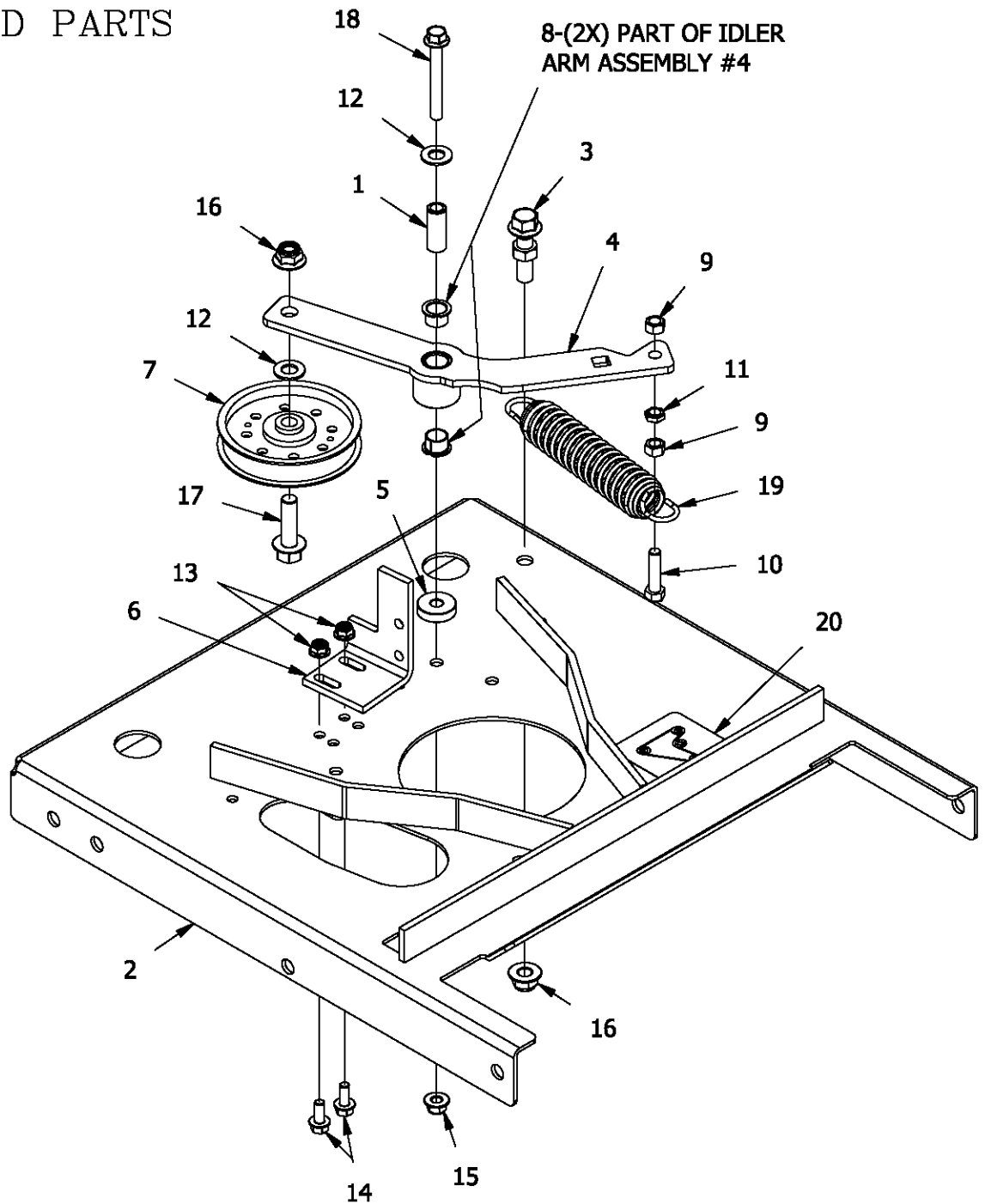
LIFT ASSEMBLY & RELATED PARTS



**659-171A
RELEASE HANDLE ASSEMBLY**

ITEM #	PART #	QTY	DESCRIPTION	ITEM #	PART #	QTY	DESCRIPTION
1	642-063P	2	DRAG BAR TAB	19	659-171A	1	RELEASE HANDLE ASSEMBLY
2	659-299P	4	DRAG LINK BAR	20	659-140P	2	DECK HOOK
3	620-051P	1	LIFT BAR	21	659-148W	1	RELEASE HANDLE WELDMENT
4	642-081P	2	LIFT SLEEVE, FRONT	22	659-145P	1	HOOK KEEPER
5	642-193P	2	LIFT SLEEVE, REAR	23	H-2547	1	SPRING, TORSION
6	F-1879	1	5/16-18 X 1 1/4" GR.5	24	F-1005-03	1	NUT, 3/8-16, STOVER
7	F-1125	1	5/16-18 STOVER NUT	25	F-1009-03	2	WASHER, FLAT, 3/8"
8	659-056P	1	DECK LIFT PEDAL	26	F-2187	2	PIN, GROOVED, 1/4X1.50", HARDENED
9	642-177P	4	HANGER PIN	27	F-1073	1	CAPSCREW, 3/8-16 X 2, GR. 5
10	F-1815	2	CLEVIS PIN, 1/2 X 1 1/4"	28	H-2401	1	TREAD PAD
11	F-1489	4	NUT, 1/2" JAM	29	F-1005-05	1	1/2" STOVER NUT
12	F-1936	4	1/2-13 X 3 1/2, 2" THREAD	30	659-146P	1	LATCH PLATE
13	F-1521	8	WASHER, 1/2 NARROW	31	659-170P	1	PLATE, CATCH
14	H-2239	8	RUE RING, 1/2"	32	F-1158	2	NUT, 1/4" STOVER
15	H-2240	2	CLEVIS PIN, 1/2 X 4 1/2"	33	F-1823	2	CARRIAGE BOLT, 1/4-20 X 3/4"
16	F-1898	3	CLEVIS PIN, 1/2 X 2 3/4"	34	F-1828	1	1/2-13 x 3-1/2" CAPSCREW
17	F-2039	4	5/16-24 x 2" HHCS	35	F-2041	4	5/16-24 JAM NUT
18	642-175P	2	ADJUSTABLE HANGER END				

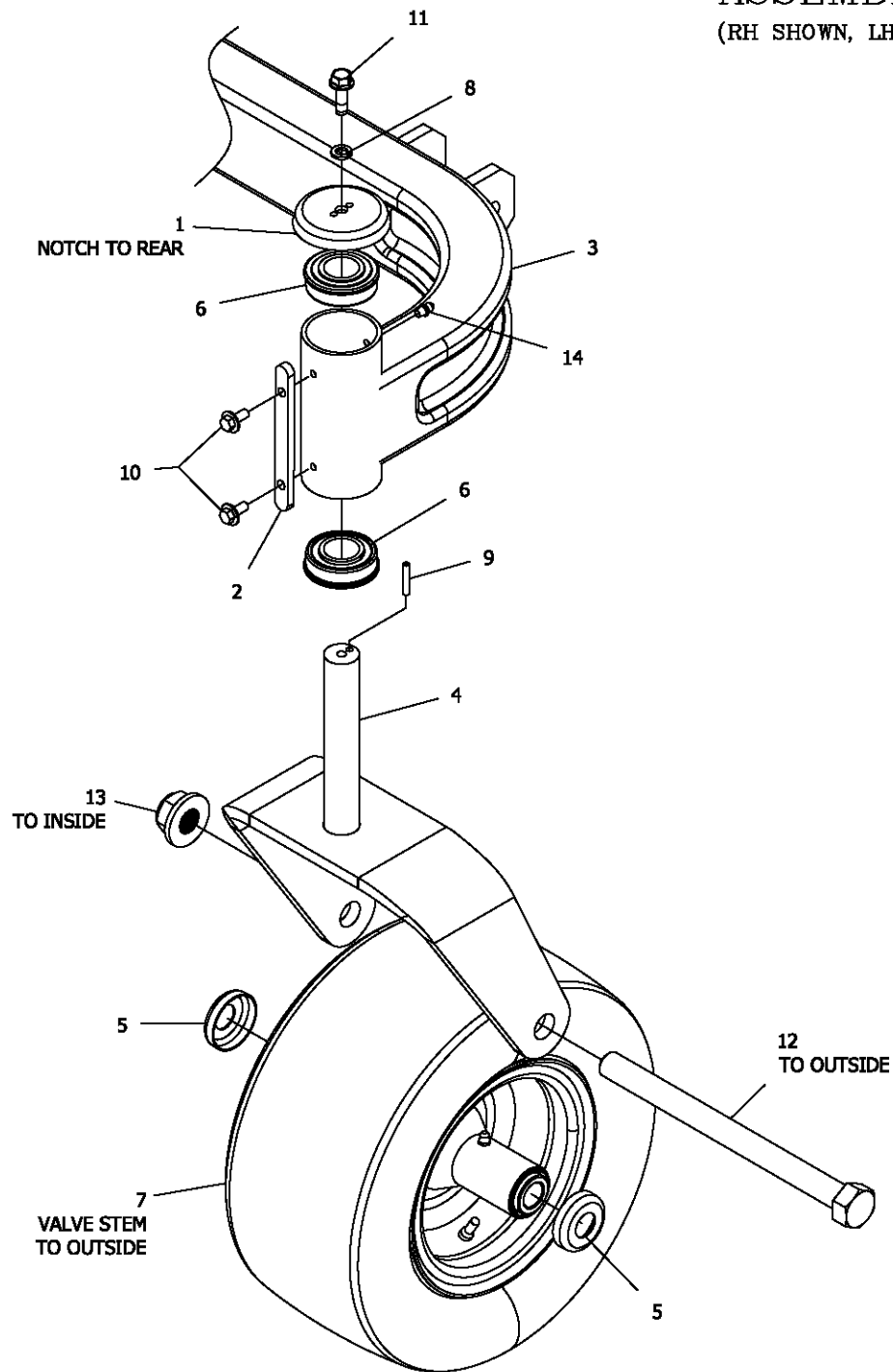
TRANSMISSION IDLERS & RELATED PARTS



ITEM #	PART #	QTY	DESCRIPTION	ITEM #	PART #	QTY	DESCRIPTION
1	659-085P	1	Mounting Pin	11	F-1486	3	3/8-16 Jam Nut
2	700-107W	1	WLDT, MOTOR MOUNT	12	F-1521	15	1/2" WASHER, CUSTOM
3	700-146A	1	SPRING ANCHOR ASS'Y	13	F-2063	52	Nut, 5/16-18 Nyloc, Flanged
4	707-012A	1	S/A, IDLER ARM	14	F-2120	28	FHCS, 5/16-18 x 0.75, YZ, GR5
5	707-022P	1	SPACER, 3/8X1-1/4, .500	15	F-2151	23	Nut, 3/8-16 Nyloc, Flanged
6	707-033P	1	CLUTCH STOP	16	F-2152	16	Nut, 1/2-13 Nyloc, Flanged
7	D-3922	1	4" Idler Pulley 1/2" Bore	17	F-2154	1	FHCS, 1/2-13 x1-3/4", YZ, GR5
8	D-3730	4	Flanged Bushing 5/8" Bore	18	F-2180	1	FHCS, 3/8-16 x 3", YZ, GR5
9	F-1005-03	2	3/8-16 Stover Nut	19	H-2619	1	SPRING, 5 X 1-1/2, TAPERED ENDS
10	F-1015-27	1	3/8-16 x 1-1/2" Capscrew	20	P-12918	1	DECAL, HYDRO BELT ROUTING

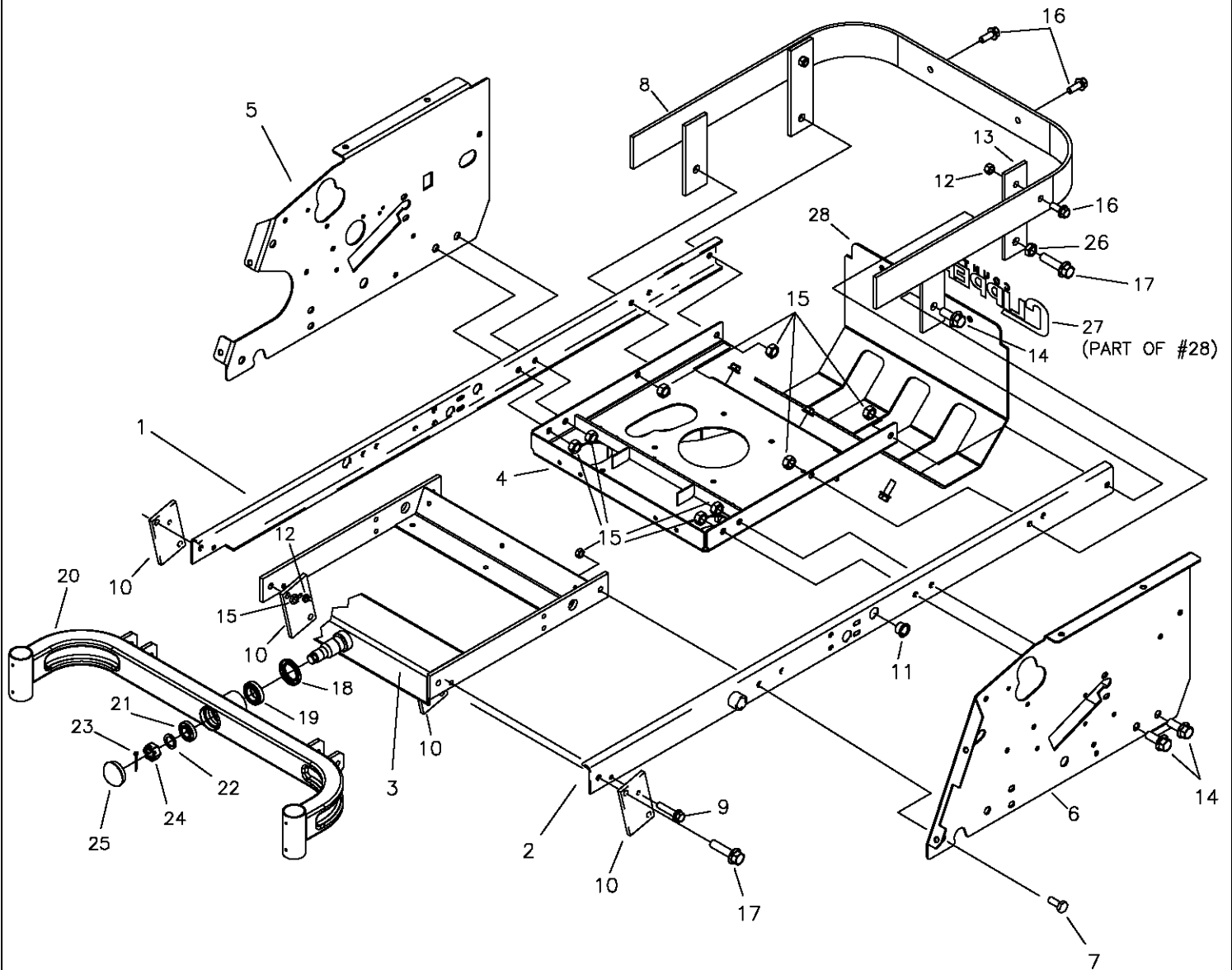
CASTER WHEEL ASSEMBLY

(RH SHOWN, LH OPPOSITE)



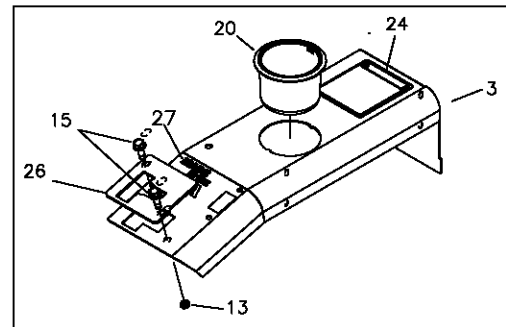
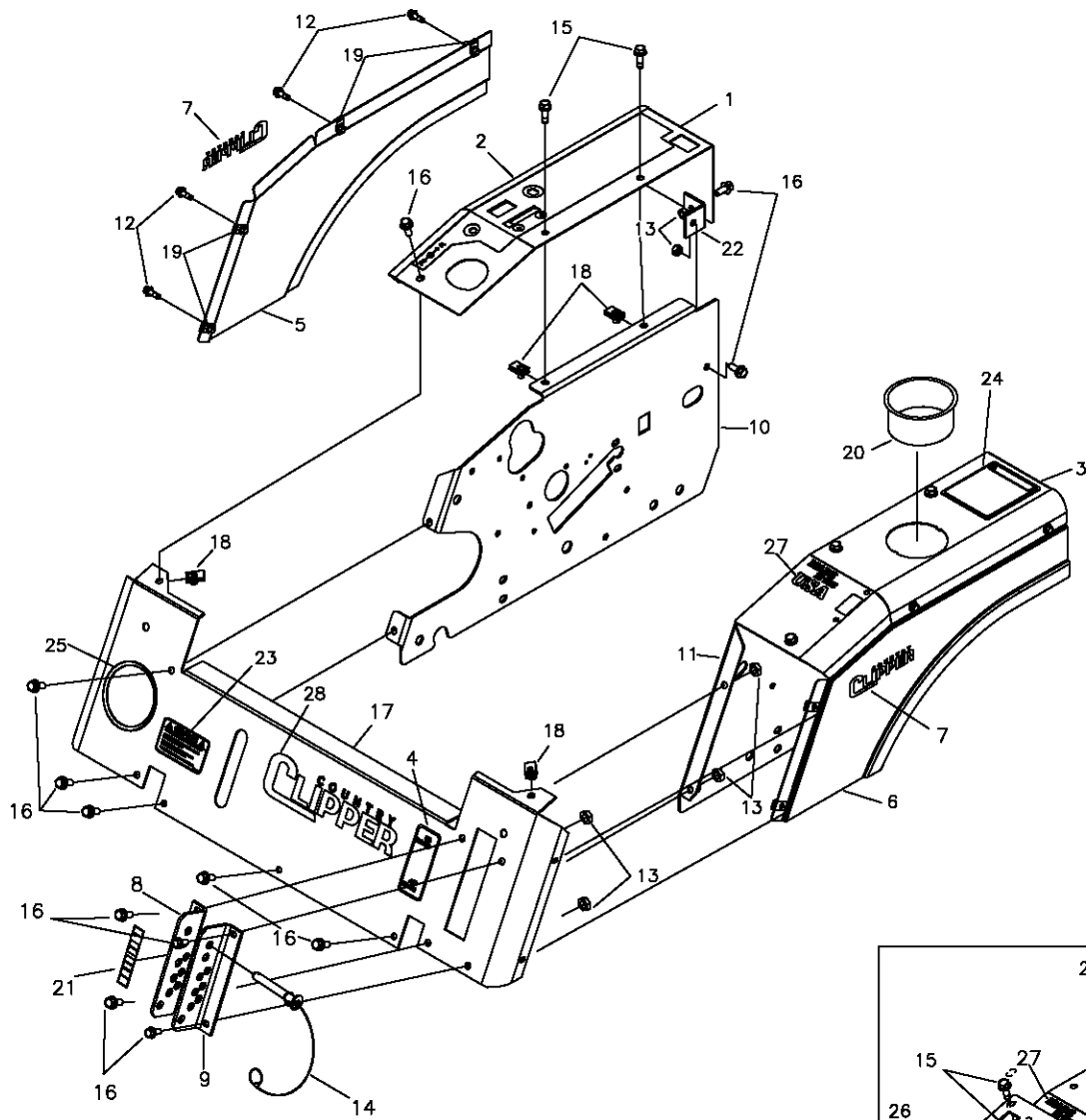
ITEM #	PART #	QTY	DESCRIPTION	ITEM #	PART #	QTY	DESCRIPTION
1	636-176P	2	Bearing Cap	8	F-1019-02	2	5/16" LockWasher
2	659-185P	2	Stop Tab	9	F-1855	2	3/16 x 1" Roll Pin (Heavy Duty)
3	659-287W	1	WLDT, AXLE, FRONT	10	F-2030	4	1/4 x 5/8 Self Tapping Capscrew
4	663-217W	2	WLD'T, CASTER YOKE	11	F-2121	8	FHCS, 5/16-18X1", LOCK PATCH
5	714-252P	4	CAP, BEARING, SMALL, 3/4"	12	F-2194	2	HHCS, 3/4-10 X 9-1/2", YZ, GR5
6	D-2008-02	4	Bearing SF-16-32	13	F-2195	2	NUT, FLANGE NYLOC, YZ
7	D-3957	2	TIRE ASS'Y, 13X6.5-6, SM BEARING	14	H-1056	2	1/4" Grease Fitting

FRAME SIDE & RELATED PARTS



ITEM #	PART #	QTY	DESCRIPTION	ITEM #	PART #	QTY	DESCRIPTION
1	659-021W	1	FRAME SIDE RH.	14	F-2127	6	FHCS, 1/2-13 X 1-1/4" GR.5
2	659-022W	1	FRAME SIDE LH.	15	F-2152	12	NUT, 1/2-13, NYLOC FLANGED
3	709-157W	1	AXLE MOUNTING WELDMENT	16	F-2141	2	FHCS, 3/8-16 X 1" GR.5
4	700-107W	1	MOTOR MOUNT WELDMENT	17	F-2128	3	FHCS, 1/2-13 X 2", GR.5
5	700-083P	1	SIDE PANEL RH. (JS)	18	H-2812	1	SEAL, SHAFT, 1.75, 2.375, 0.313
-	700-109P	1	SIDE PANEL RH. (TS)	19	D-3825	1	BRG, TAPPERED, SET
6	700-084P	1	SIDE PANEL RH. (JS)	20	659-287W	1	FRONT AXLE WLDT.
-	700-110P	1	SIDE PANEL LH. (TS)	21	D-3826	1	BRG, TAPARED, SET
7	F-1386	2	1/2-13 x 1-1/4" CAPSCREW	22	606-303P	1	1" WASHER
8	700-080W	1	WLDT, ENGINE GUARD	23	F-1728	1	3/16 X 2" COTTER PIN
9	F-2126	2	FHCS, 3/8-16 x 2" GR.5	24	F-1724	1	1-14 SLOTTED NUT
10	642-063P	4	DRAG BAR TAB	25	H-1924	1	GREASE CAP
11	D-3730	2	BUSHING, 5/8 BORE (JS ONLY)	26	F-1462	1	NUT, 1/2-13, JAM
12	F-2151	4	NUT, 3/8-16, NYLOC, FLANGED	27	P-12984	1	DECAL, NEW CC, LG, BLK
13	700-078P	1	BAR, BUMPER BRACE	28	629-899A	1	MUFFLER GUARD w/DECALS

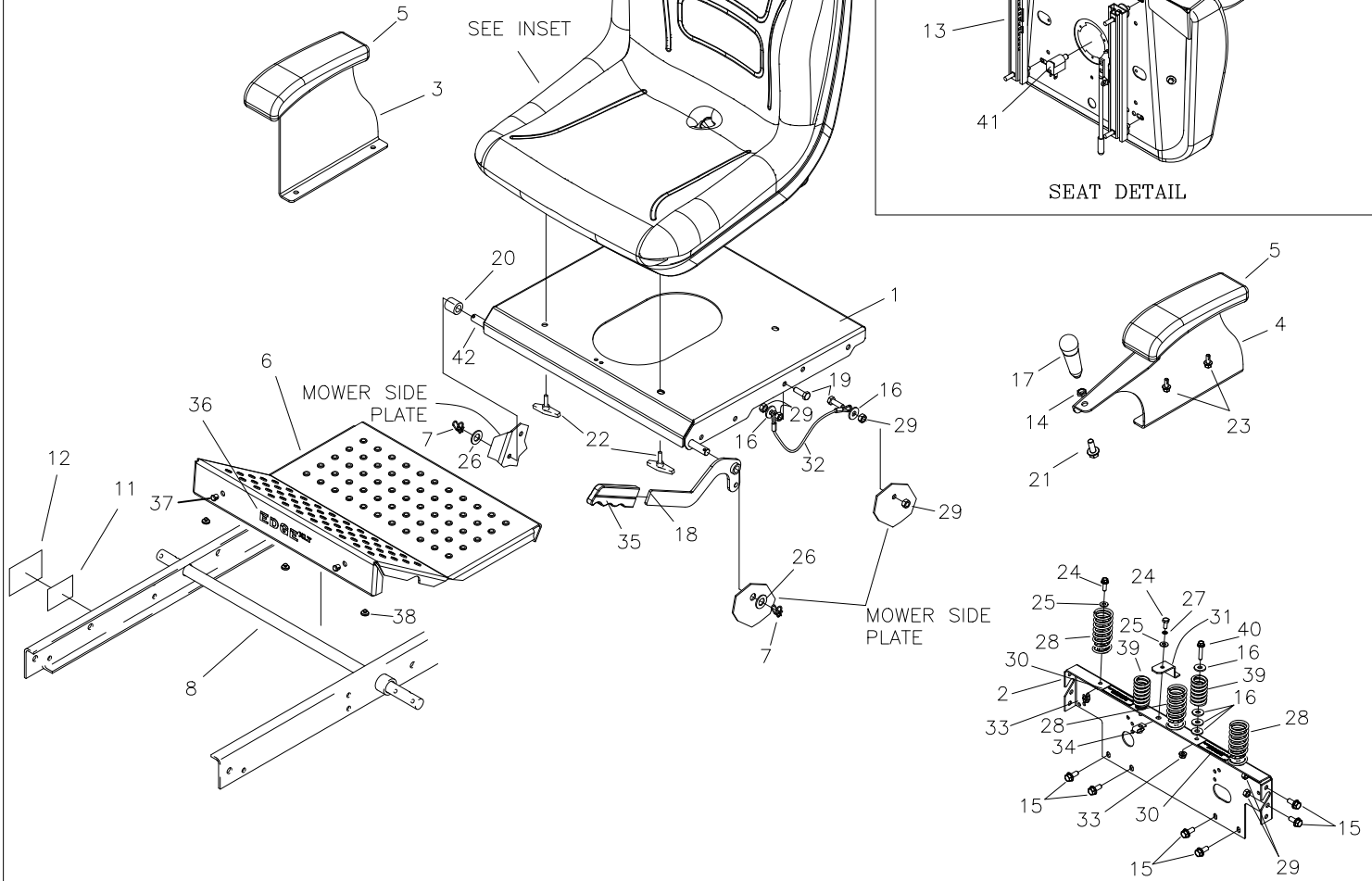
FENDER ASSEMBLY



TWINSTICK FENDER ASSY

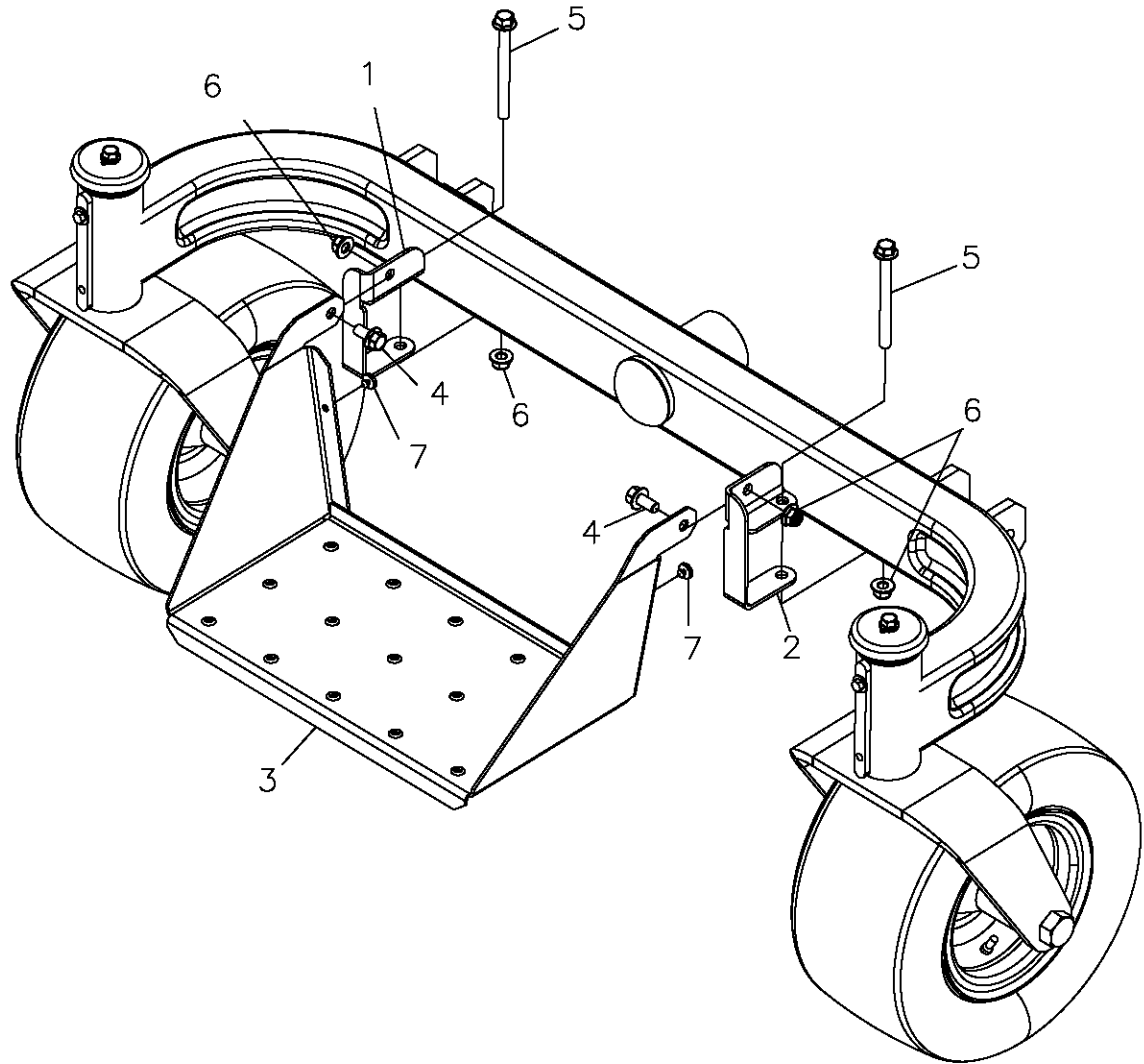
REF NO.	PART NO.	QTY.	DESCRIPTION	REF NO.	PART NO.	QTY.	DESCRIPTION
1	625-146A	1	FENDER CAP w/DECAL, EDGE/XLT, RH (JS)	14	629-854A	1	LOCK PIN, DECK HEIGHT, ASS'Y
-	625-148A	1	FENDER CAP w/DECAL, EDGE XLT, RH (TS)	15	F-2121	8	FHCS, 5/16-18x1" GR.5 w/PATCH
2	P-12925	1	DECAL, CONTROL PANEL	16	F-2120	15	FHCS, 5/16-18 X 3/4" GR.5
3	625-147A	1	FENDER CAP w/DECAL, EDGE/XLT, LH (JS)	17	629-894A	1	FRONT PANEL w/DECAL, EDGE XLT
-	625-149A	1	FENDER CAP w/DECAL, EDGE XLT, LH (TS)	18	F-1860	6	5/16-18 "U"-NUT
4	P-11382	1	DECAL, PARK BRAKE	19	F-1858	8	1/4-20 "U"-NUT
5	707-101A	1	FENDER SKIRT w/DECAL, EDGE/XLT, RH	20	H-2228	1	CUP HOLDER
6	707-102A	1	FENDER SKIRT w/DECAL, EDGE/XLT, LH	21	P-12039	1	DECAL, "CUT HEIGHT"
7	P-12985	2	DECAL, NEW CC, SM, BLK	22	707-060P	2	BRACKET, FENDER
8	659-115A	1	LATCH PLATE RH W/DECAL	23	P-12557	1	DECAL, "CAUTION"
9	642-129P	1	LATCH PLATE LH.	24	P-11370	1	DECAL, WARNING
10	-----	1	SEE PAGE 13 & 14	25	H-1626	1	U CHANNEL TRIM
11	-----	1	SEE PAGE 13 & 14	26	659-262P	1	NEUTRAL PLATE
12	F-2119	8	FHCS, 1/4-20x3/4", GR.5 w/PATCH	27	P-13000	1	DECAL, "USA"
13	F-1125	15	5/16-18 LOCK NUT	28	P-12984	1	DECAL, NEW CC, LG, BLK

SEAT, FOOTDECK & RELATED PARTS



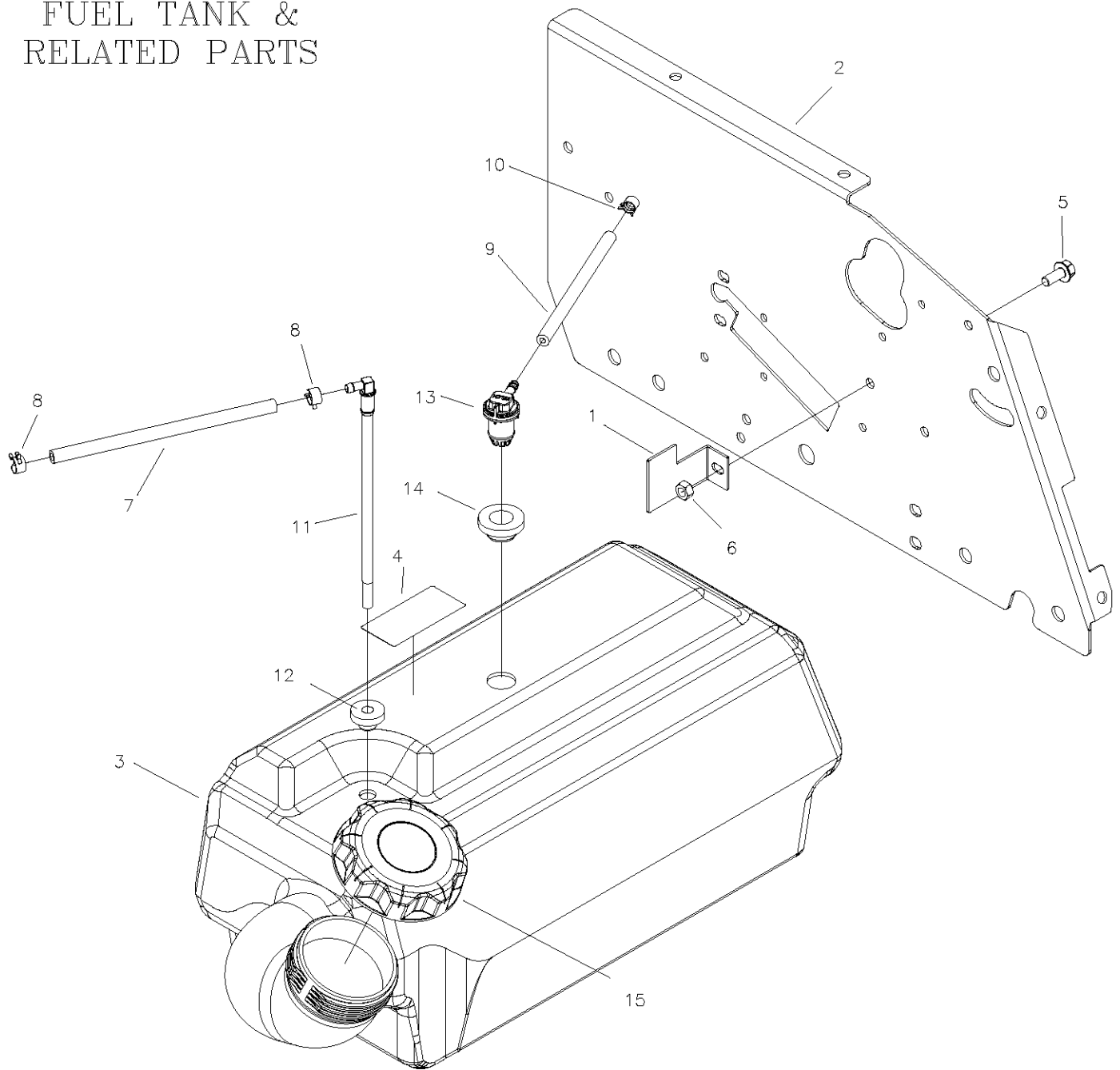
REF NO.	PART NO.	QTY.	DESCRIPTION	REF NO.	PART NO.	QTY.	DESCRIPTION
1	700-097P	1	PLATE, SEAT (EDGE)	21	F-2141	1	FHCS, 5/16-18x1" GR5
-	707-005P	1	PLATE, SEAT (EDGE XLT)	22	659-073A	4	T-HANDLE ASSEMBLY (EDGE)
2	707-039P	1	PLT, REAR SEAT FILLER	-	F-2063	4	3/8-16 NYLOC NUT, FLANGED (EDGE XLT)
3	700-153P	1	PLATE, ARM REST, RH	23	F-2134	6	HFCS 1/4-20x5/8" SELF TAPPING
4	700-152P	1	PLATE, ARM REST, LH, w/HANDLE	24	F-1538	4	1/4-20x3/4" CAPSCREW
	700-154P	1	PLATE, ARM REST, LH (TS)	25	F-1009-01	4	1/4" FLAT WASHER
5	H-2753	2	PAD, ARM REST	26	F-1521	2	1/2" WASHER
6	659-307P	1	FOOT DECK, EDGE	27	F-1019-01	1	1/4" LOCK WASHER
-	629-849A	1	FOOT DECK w/DECALS, EDGE XLT	28	H-1920	3	SPRING, ASSIST
7	H-2239	1	1/2" RUE RING	29	F-1125	9	5/16-18 STOVER NUT
8	620-051P	1	LIFT BAR	30	P-11052	2	DECAL, TRANSMISSION OIL
9	H-2604	1	SEAT	31	659-137P	1	BATTERY HOLD DOWN
11	P-13142	1	SERIAL TAG	32	H-2460	1	CABLE
12	P-12473	1	SERIAL TAG LAMINATION DECAL	33	F-1005-01	1	1/4-20 STOVER NUT
13	H-2760	1	TRACK KIT	34	F-1858	1	1/4-20 "U" NUT
14	F-1486	1	3/8-16 JAM NUT	35	H-1926	1	HANDLE, GRIP
15	F-2120	8	FHCS, 5/16-18x3/4" GR5	36	P-12974	1	DECAL, EDGE XLT
16	F-1009-02	11	5/16" FLAT WASHER	37	H-1280	2	CAP PLUG, PLASTIC (EDGE XLT)
17	H-2764	1	HANDLE, JOYSTICK	38	H-2461	3	RUBBER BUMPER
18	707-042W	1	BRAKE HANDLE	39	H-2636	2	SPRING
19	F-1015-15	2	5/16-18 x 1" CAPSCREW	40	F-2182	2	FHCS, 1/4-20x1-1/4" GR5
20	707-046P	1	SPACER, SEAT PAN	41	E-6491	1	PLUNGER, SEAT SWITCH
				42	700-091P	1	PIN, SEAT HINGE

FRONT STEP ASSEMBLY



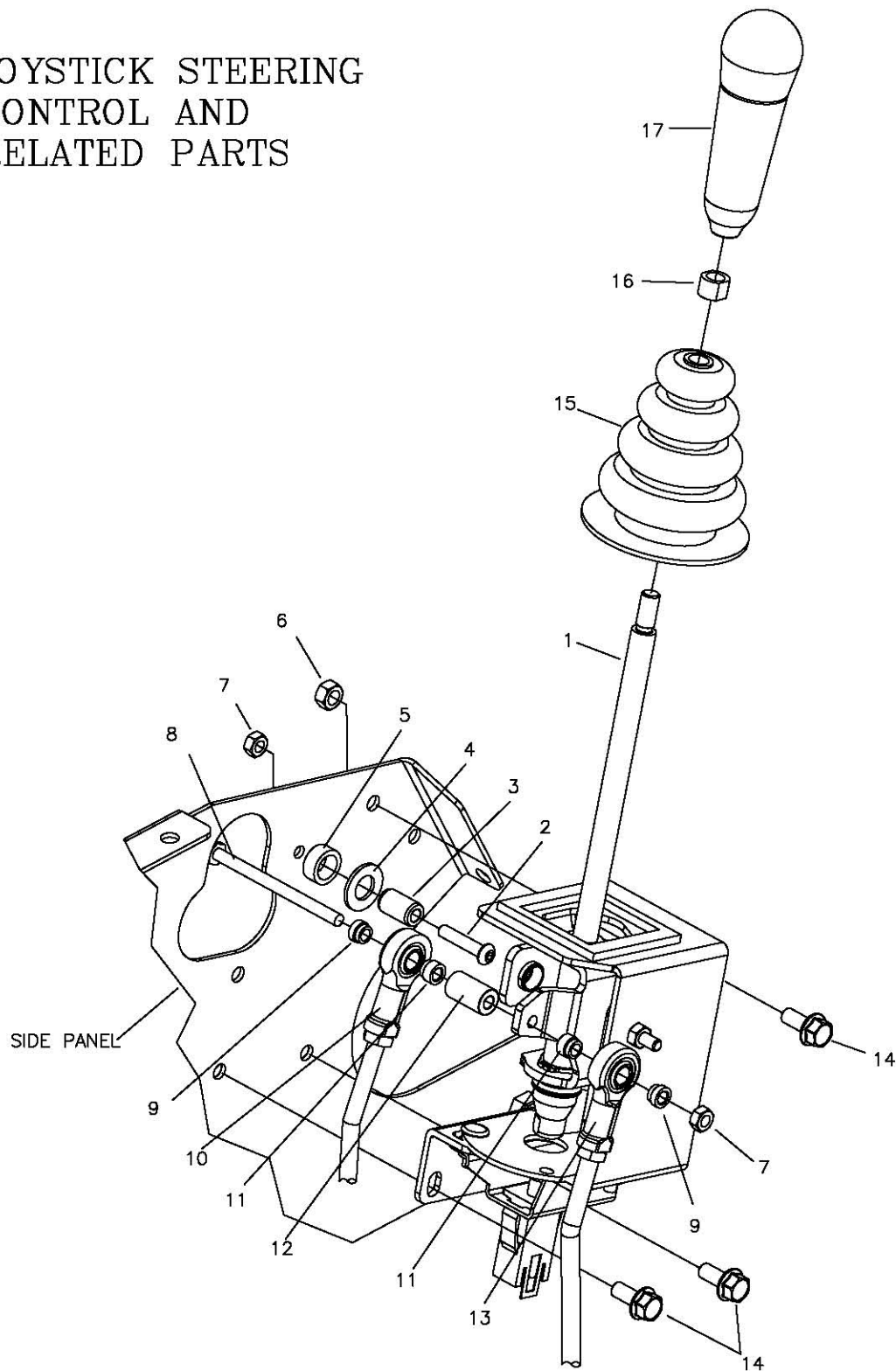
REF NO.	PART NO.	QTY.	DESCRIPTION
1	659-241P	1	Bracket, Step Mount, RH
2	659-242P	1	Bracket, Step Mount, LH
3	663-134P	1	STEP, EXTENDED
4	F-2124	2	FHCS, 3/8-16X3/4"
5	F-2142	2	FHCS, 3/8-16X4"
6	F-2151	25	Nut, 3/8-16 Nyloc, Flanged
7	H-2461	5	Rubber bumper

FUEL TANK & RELATED PARTS



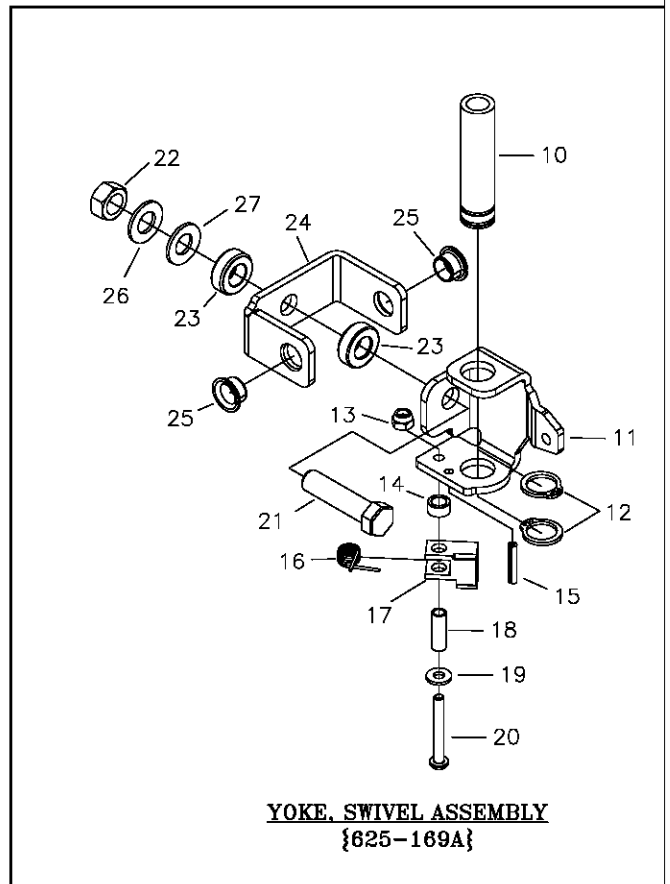
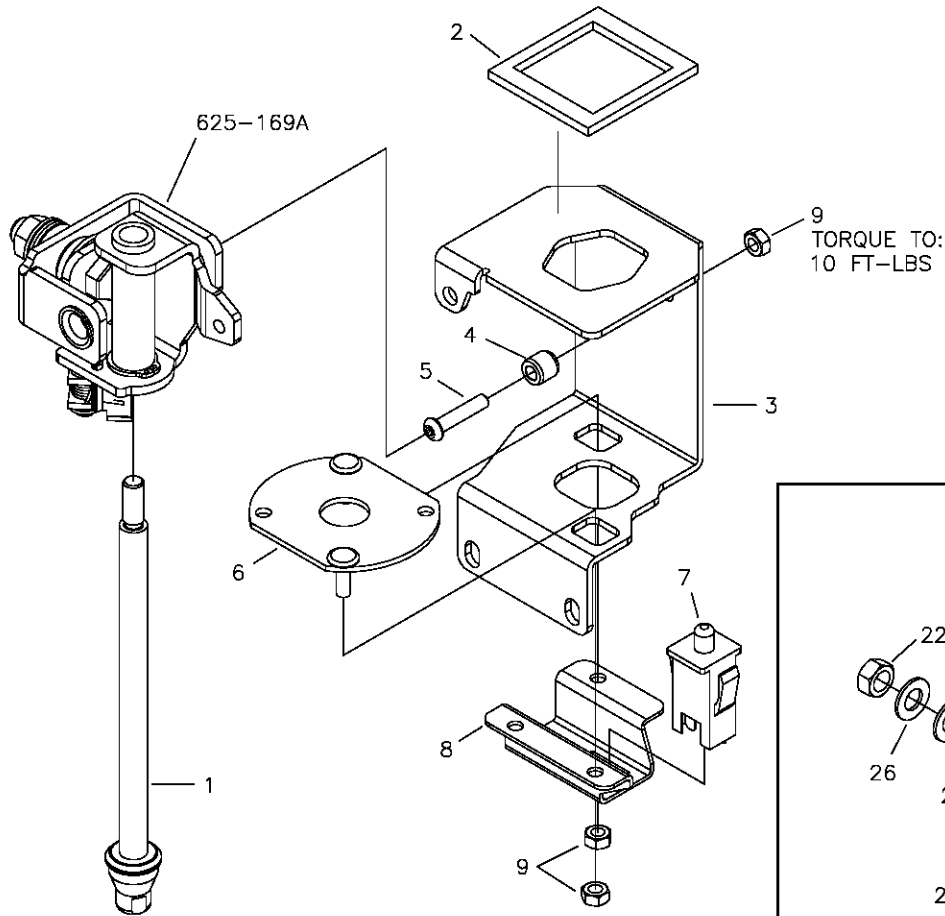
ITEM #	PART #	QTY	DESCRIPTION
1	700-108P	1	STRAP, FUEL TANK
2	-----	1	SEE PAGE 12 & 13
3	H-2724	1	FUEL TANK ASSEMBLY, SMALL
4	P-12922	1	CARB/EPA LABEL
5	F-2120	1	FHCS, 5/16-18x3/4", GR5
6	F-1125	1	5/16-18 Stover Nut
7	H-1648	4.0ft	Fuel Line
8	H-1687	2	1/2 O.D. Hose Spring Clamp
9	H-2697	4.0ft	VENT LINE
10	H-2698	1	HOSE CLAMP, .406 OD
11	H-2742	1	PICK UP TUBE
12	H-2741	1	GROMMET, PICK UP TUBE
13	H-2678	1	REMOTE VENT
14	H-2679	2	REMOTE VENT GROMMET
15	H-2743	1	GAS CAP

JOYSTICK STEERING CONTROL AND RELATED PARTS



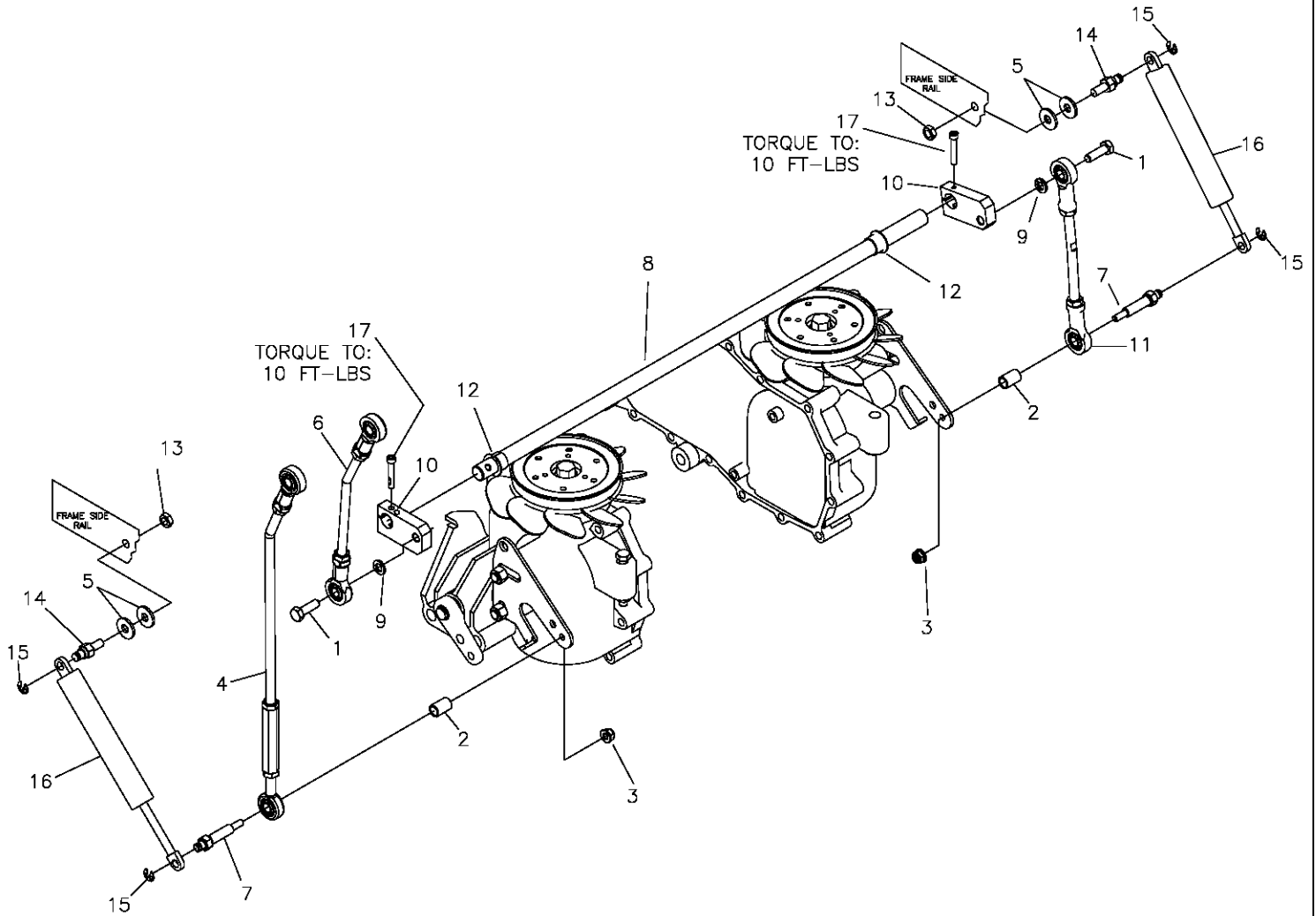
REF NO.	PART NO.	QTY.	DESCRIPTION	REF NO.	PART NO.	QTY.	DESCRIPTION
1	625-170A	1	JOYSTICK ASSEMBLY	10	707-082P	1	LINKAGE, INNER, JOYSTICK
2	F-2103	1	BUTTON SHCS, 1/4-20x1"	11	625-107P	1	BUSHING, .375 ROD END
3	625-119P	1	PIN, PIVOT, JS, LONG	12	625-100P	1	TUBE, PIVOT, JOYSTICK
4	F-1521	1	1/2" WASHER	13	707-083P	1	OUTER, LINKAGE, JOYSTICK
5	625-126P	1	SPACER, JOYSTICK PANEL	14	F-2120	3	FHCS, 5/16-18 x 3/4" GR5
6	F-1125	3	5/16-18 STOVER NUT	15	H-1991	1	BOOT
7	F-1005-01	1	1/4-20 LOCK NUT	16	H-2765	1	NUT, JOYSTICK
8	F-1020-01	1	1/4-20 x 3-1/2" CAPSCREW	17	H-2764	1	HANDLE, JOYSTICK
9	625-116P	1	BUSHING, .375 ROD END, SHORT				

JOYSTICK ASSEMBLY 625-170A



ITEM	PART #	QTY.	DESCRIPTION	ITEM	PART #	QTY.	DESCRIPTION
1	625-130A	1	ROD ASSEMBLY, SHORT	15	F-1503	1	3/16 x 1" SPIRAL PIN
2	H-1947	1	GASKET, FOAM, JOYSTICK	16	H-2710	1	SPRING, DETENT, JOYSTICK
3	625-095P	1	HOUSING, JOYSTICK	17	625-103P	1	TAB, CAM DETENT
4	625-106P	1	PIN, PIVOT, JOYSTICK	18	625-124P	1	TUBE-SPACER, DETENT CAM
5	F-2103	1	BUTTON SHCS, 1/4-20 x 1", CZ	19	F-2136	1	WASHER, FLAT, #12 PLAIN
6	625-127W	1	NEUTRAL PLATE, WLDT	20	F-2135	1	SCR, PANHD, PHLPS, #12-24x1-3/4"
7	E-6474	1	SWITCH, SNAP MOUNT	21	F-1293	1	1/2-13 x 2" CAPSCREW
8	659-285P	1	MOUNT, SWITCH	22	F-1005-05	1	1/2-13 STOVER NUT
9	F-1005-01	3	1/4-20 LOCK NUT	23	D-3931	2	THRUST BEARING
10	625-099P	1	TUBE, GUIDE, CONTROL ROD	24	625-097P	1	PIVOT, JOYSTICK (PART OF 625-128A)
11	625-096P	1	YOKE, SWIVEL, JOYSTICK	25	D-3784	2	BUSHING, FLANGED (PART OF 625-128A)
12	H-2705	2	RING, DETENT, .75 EXT.	26	F-1521	1	1/2" WASHER, CUSTOM
13	F-2137	1	NUT, #12-24, NYLOCK	27	H-2704	1	SPRING, BELLEVILLE, .50x1x.073
14	625-125P	1	SPACER, CAM DETENT				

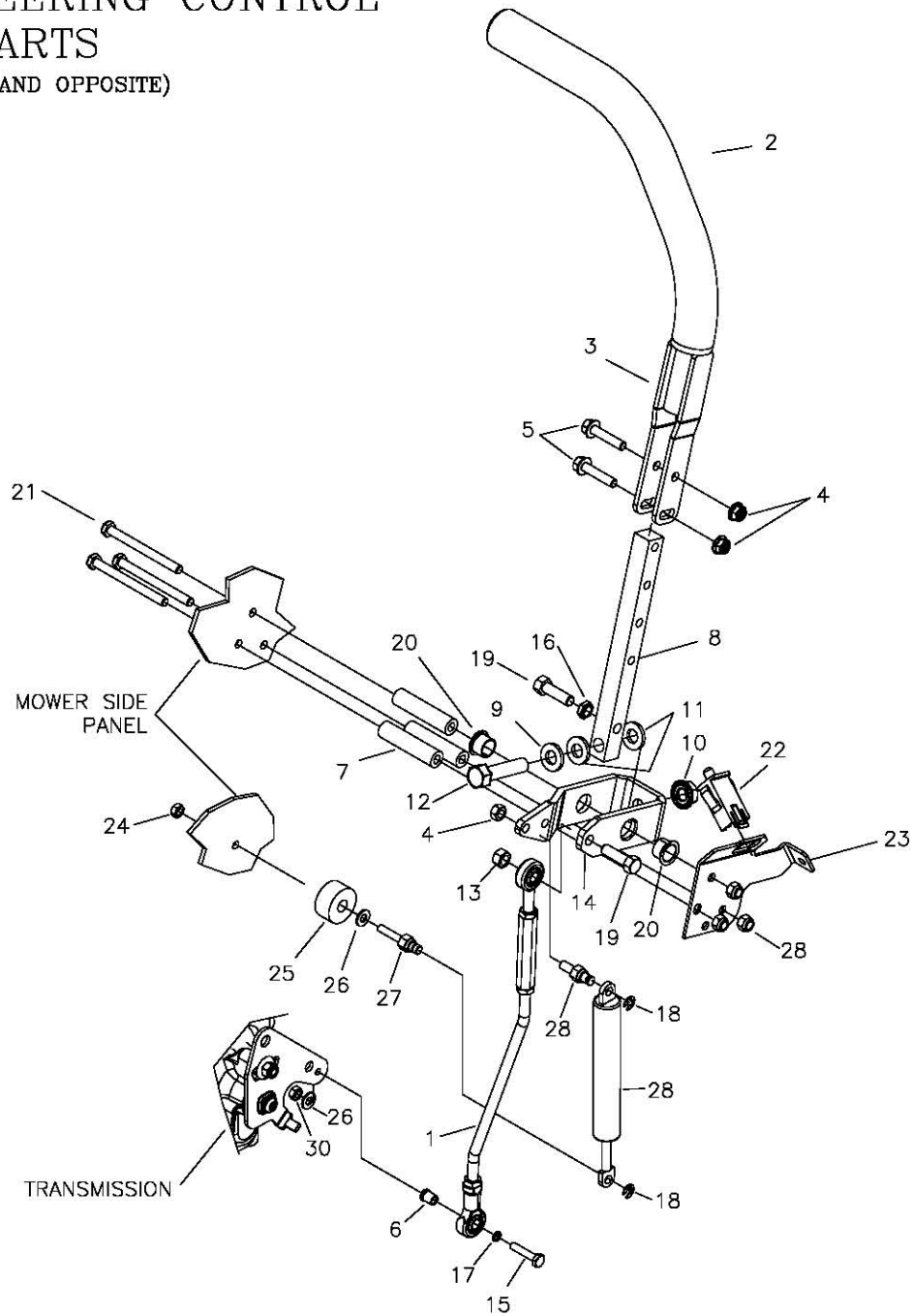
JOYSTICK STEERING CONTROL & RELATED PARTS (CON'T)



ITEM #	PART #	QTY	DESCRIPTION
1	F-2141	2	FHCS, 3/8-16 X 1", YZ, GR5
2	707-073P	2	STAND-OFF, LINKAGE MOUNT
3	F-2132	2	NUT, 1/4-20 NYLOC, FLANGED
4	707-083P	1	OUTER LINKAGE, JS
5	F-1009-02	4	5/16" FLAT WASHER
6	707-082P	1	INNER LINKAGE, JS
7	707-072P	2	STUD, LINKAGE MOUNT
8	700-150P	1	ROD, SHIFT CROSS
9	F-1019-03	2	3/8" LOCKWASHER
10	700-151P	2	SWIVEL ARM
11	H-2757	1	LINKAGE, JS
12	D-3730	2	BUSHING
13	F-2063	2	NUT, 5/16-16, NYLOC FLANGED
14	638-028P	2	DAMPER BOLT, 5/16-18 x 3/4
15	F-1610	4	E-RING FOR 1/4" SHAFT
16	H-2467	2	DUAL ACTION DAMPER
17	F-2231	2	SHCS, 12-24X1-1/4, YZ, LOCK PATCH

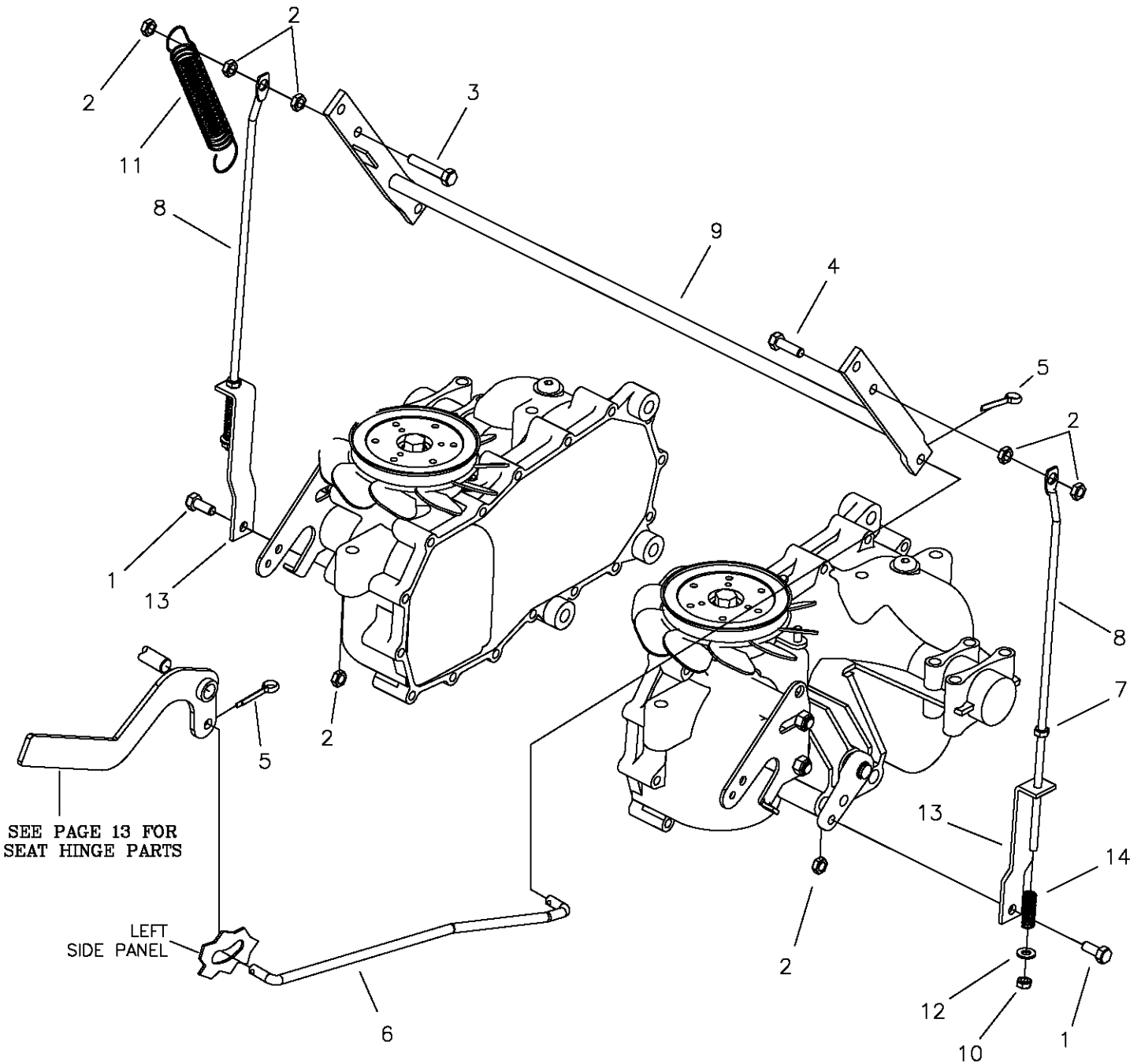
TWINSTICK STEERING CONTROL & RELATED PARTS

(RIGHTHAND SHOWN, LEFTHAND OPPOSITE)



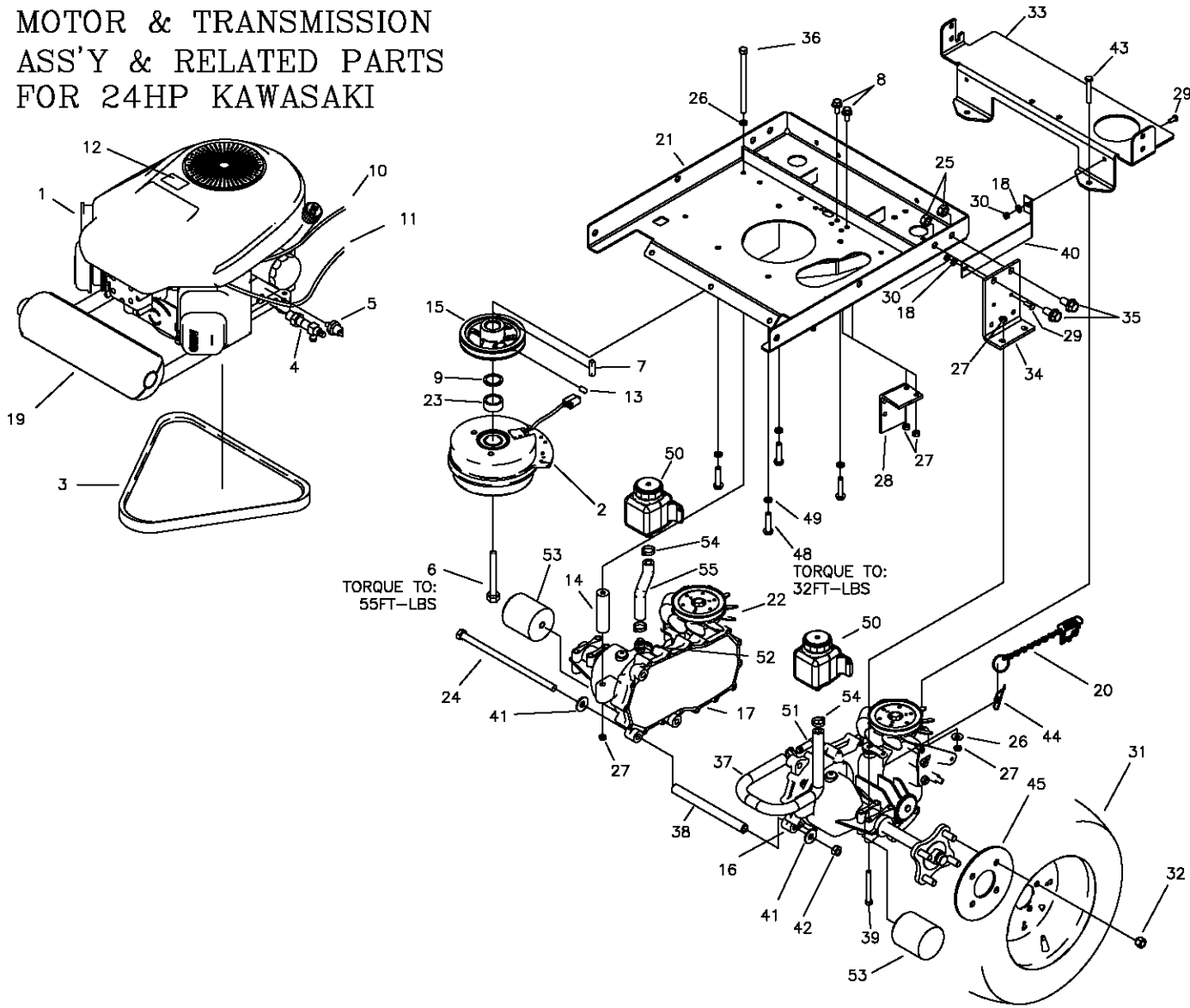
REF NO.	PART NO.	QTY.	DESCRIPTION	REF NO.	PART NO.	QTY.	DESCRIPTION
1	663-050P	1	LINK ROD ASSEMBLY	16	F-1486	1	3/8-16 JAM NUT
2	H-2739	1	GRIP, 15", CLOSED END	17	F-1019-01	4	1/4" LOCK WASHER
3	659-364W	1	DUAL LEVER CONTROL	18	F-1610	2	E-RING FOR 1/4" SHAFT
4	F-2063	8	NUT, 5/16-18, NYLOC FLANGED	19	F-1307	2	3/8-16 X 1 1/4" CAPSCREW
5	F-2129	2	FHCS, 5/16-18 X 1 1/2" w/PATCH	20	D-3730	2	FLANGED BUSHING 5/8" BORE
6	H-2465	1	ADAPTER, ROD END, LONG	21	F-2058	3	5/16-18 x 3 1/2" CAPSCREW
7	659-252P	3	TUBE SPACER	22	E-6474	1	SWITCH, SNAP MOUNT
8	659-365P	1	LOWER SHIFT BLOCK	23	647-242P	1	MOUNTING BRACKET (RH)
9	F-1521	1	WASHER	--	647-243P	1	MOUNTING BRACKET (LH)
10	F-2060	1	1/2-13 NUT, FLANGE LOCK	24	F-2132	1	NUT, 1/4-20, NYLOC FLANGED
11	606-151P	2	WASHER, NYLON 1/2 ID x 1/8"	25	F-2045	1	SPACER
12	F-1293	1	HHCS, 1/2-13 X 2", YZ GR5	26	F-1009-01	2	1/4" FLAT WASHER
13	F-2151	1	NUT, 3/8-16, NYLOC FLANGED	27	638-029P	1	DAMPER BOLT, 1/4-20
14	659-243P	1	SHIFTING YOKE	28	H-2843	1	DUAL ACTION DAMPNER, 750N
15	F-2182	1	FHCS, 1/4-20 X 1-1/4", YZ GR5	29	638-028P	1	DAMPER BOLT, 5/16-18 X 3/4"

PARKING BRAKE ASSEMBLY & RELATED PARTS



ITEM #	PART #	QTY	DESCRIPTION
1	F-1546	4	5/16-18 X 3/4" H.H.C.S.
2	F-1125	6	5/16" STOVER LOCK NUT
3	F-1015-17	1	5/16-18 X 1-1/2" H.H.C.S.
4	F-1015-15	1	5/16-18 X 1" H.H.C.S
5	F-1491	2	1" COTTER PIN
6	707-044P	1	LINK, PARK BRAKE
7	F-2132	2	NUT, 1/4-20, FLANGED NYLOC
8	H-2452	2	BRAKE LINK BAR, BENT
9	659-206W	1	BRAKE ROD WELDMENT
10	F-1748	2	1/4" NYLOC LOCK NUT
11	H-1635	1	EXTENSION SPRING 3/4 X 4"
12	F-1009-01	2	1/4" FLAT WASHER
13	659-159P	2	LOWER BRAKE LINK
14	H-1637	2	COMPRESSION SPRING

MOTOR & TRANSMISSION ASS'Y & RELATED PARTS FOR 24HP KAWASAKI

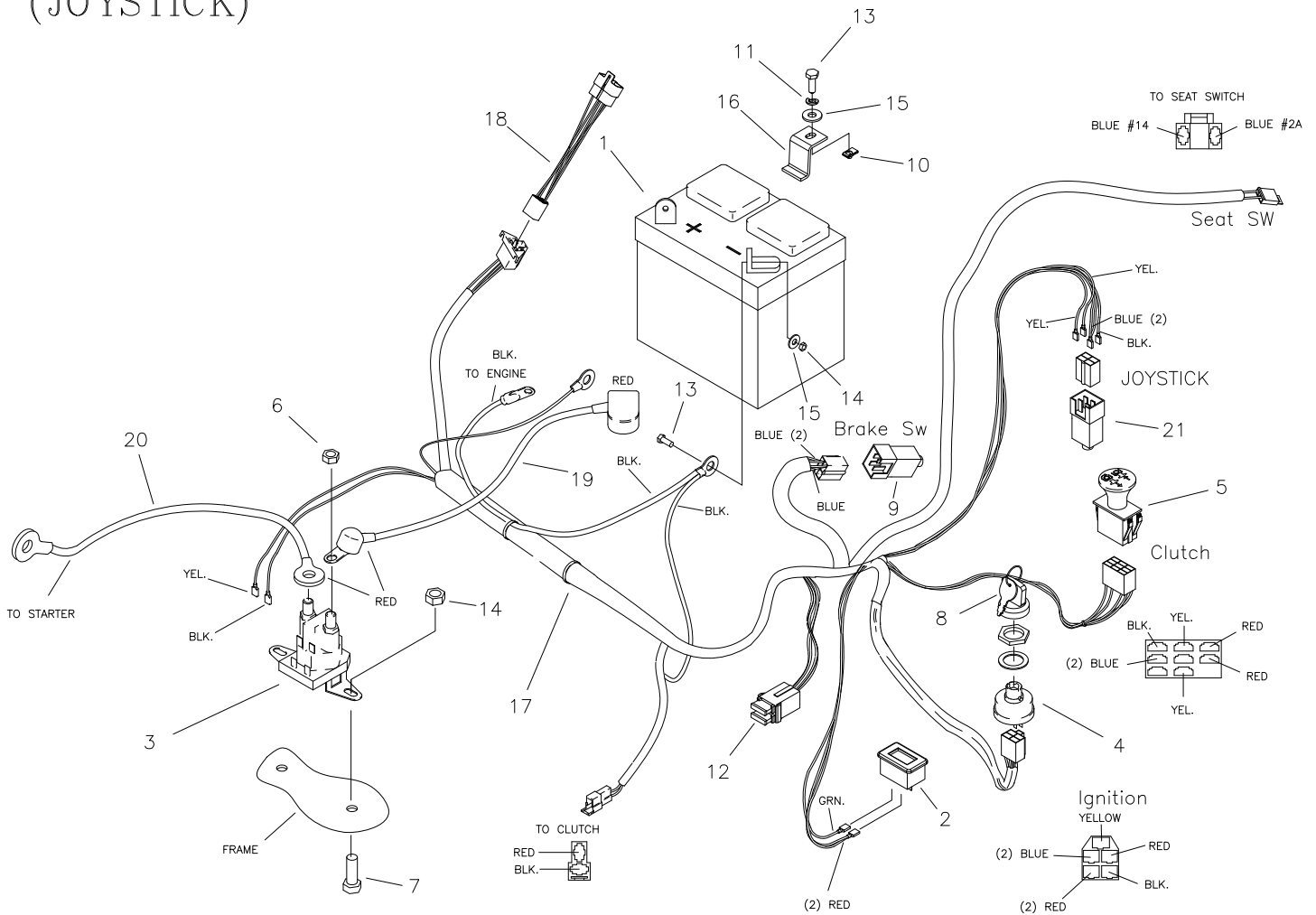


TORQUE TO:
55FT-LBS

TORQUE TO:
32FT-LBS

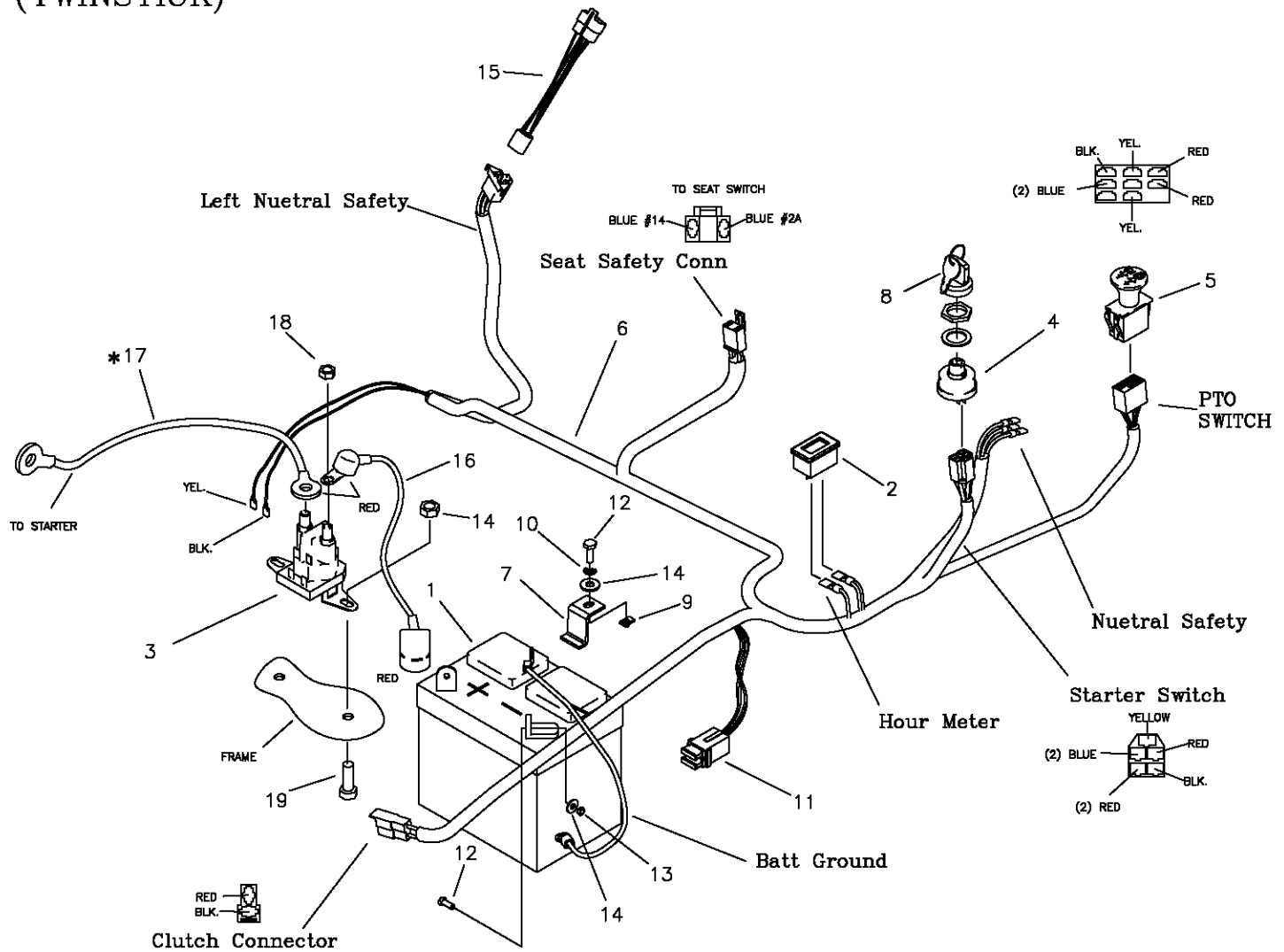
ITEM #	PART #	QTY	DESCRIPTION	ITEM #	PART #	QTY	DESCRIPTION
1	M-5394	1	ENGINE, KAW 24HP, FR730 TWIN	28	700-026P	1	CLUTCH STOP
2	E-6247	1	CLUTCH-BRAKE, 175ft/lb	29	F-2162	4	FHCS, 1/4-20 X 3/4", YZ, GR5
3	D-3891	1	V-BELT, KEVLAR CORD, A-65	30	F-2032	4	NUT, 1/4-20, NYLOC, FLG
4	H-2590	1	OIL DRAIN VALVE	31	D-3787	2	TIRE, 20x12-10, TURF
5	E-6307	1	OIL PRESSURE SWITCH	32	F-1499	8	LUG NUT, 1/2 X 20
6	F-2113	1	7/16-20x2-1/2" CAPSCREW, GR8	33	707-036P	1	BRACE, TRANSMISSION
7	621-113P	1	KEY, 1/4 SQ. X 1-1/4"	34	707-086P	1	BRACKET, HYDRO MOUNT, R
8	F-2120	4	FHCS, 5/16-18 X 3/4" BOLT GR5	-	707-087P	1	BRACKET, HYDRO MOUNT, L
9	611-143P	1	SPACER, 1-3/16" O.D. X 10GA	35	F-2127	4	FHCS, 1/2-13 X 1-1/4" GR5
10	H-2287	1	CHOKE CABLE	36	F-2145	2	5/16-18 X 6" BOLT GR8
11	H-2610	1	THROTTLE CABLE	37	H-2761	1	HOSE, 1/2" X 19"
12	P-10077-11	1	DECAL, "CLEAN"	38	659-173P	1	HYDRO BRACE
13	F-1228	1	SETSCREW, 1/4" X 1/4"	39	F-2178	4	FHCS, 5/16-18 X 3", YZ, GR5
14	659-121P	2	REAR HYDRO BRACE	40	707-061P	2	FAN SHROUD
15	659-154P	1	MOTOR PULLEY	41	F-1009-03	2	3/8" FLAT WASHER
16	D-3886-01	1	TRANSAXLE, RH, ZT-2800	42	F-2151	1	NUT, 3/8-16, NYLOC, FLG
17	D-3886-02	1	TRANSAXLE, LH, ZT-2800	43	F-2177	2	FHCS, 5/16-18 X 2-1/2", YZ, GR5
18	F-1009-01	4	1/4" FLAT WASHER	44	F-1492	2	5/16-3/8 RUE RING
19	H-2750	1	MUFFLER, KAWASAKI	45	659-092P	2	WHEEL BACKING PLATE
20	707-074P	2	FREEWHEEL CHAIN W/SPRING	48	F-2125	4	FHCS, 3/8-16 X 1-1/4", YZ, GR5
21	700-107W	1	MOTOR MOUNT	49	F-1019-03	4	3/8" LOCK WASHER
22	H-2539	2	FAN BLADE REPLACEMENT	50	D-3791	2	SMALL HYDRO TANK
23	F-2043	1	SPACER, 1.14 ID X 1.5 OD X .69	51	H-2762	1	VENT TUBE ADAPTER
24	F-2007	1	3/8-16 X 12-1/2" HEX BOLT	52	H-2517	1	VENT TUBE ADAPTER
25	F-2152	4	NUT, 1/2-13 NYLOC, FLG	53	H-2567	2	TRANSAXLE OIL FILTER
26	F-1009-02	14	5/16" FLAT WASHER	54	H-2535	4	HOSE CLAMP
27	F-2063	8	NUT, 5/16-18, NYLOSC, FLG	55	H-2549	1	HOSE 5" LONG

E-6415 WIRE HARNESS & RELATED PARTS (JOYSTICK)



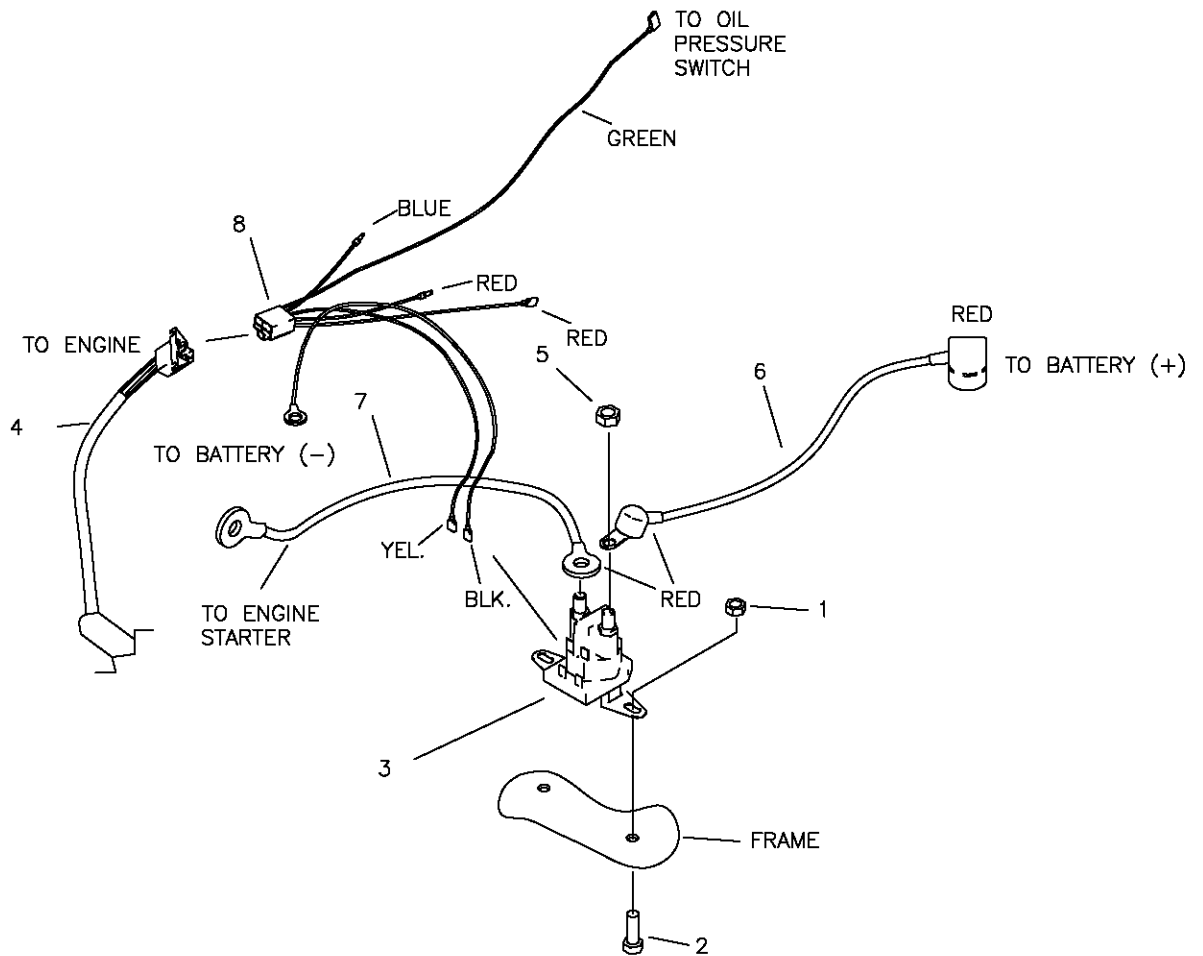
ITEM #	PART #	QTY	DESCRIPTION
1	E-6271	1	BATTERY
2	E-5878	1	HOUR METER
3	E-6054	1	SOLENOID
4	E-5873	1	START SWITCH
5	E-6403	1	CLUTCH SWITCH
6	F-1011-01	2	1/4-20 NUT
7	F-1015-02	2	1/4-20 x 5/8" CAPSCREW
8	E-6445	1	KEY, SET
9	E-6297	1	BRAKE SWITCH
10	F-1858	1	1/4-20 U-NUT
11	F-1019-01	1	1/4" LOCK WASHER
12	E-6207	2	FUSE, #ATC-30
13	F-1538	3	1/4-20 x 3/4" CAPSCREW
14	F-1158	5	1/4-20 STOVER NUT
15	F-1009-01	5	1/4" FLAT WASHER
16	659-137P	1	BATTERY HOLD DOWN
17	E-6415	1	WIRE HARNESS
18	E-6417	1	WIRE HARNESS ADAPTER (KAWASAKI)
19	E-6418	1	CABLE, BATTERY TO SOLENOID
20	E-6419	1	CABLE, SOLENOID TO ENGINE
21	E-6474	1	JOYSTICK SWITCH
-NOT SHOWN-			
	E-6580	1	SEAT SWITCH

E-6416 WIRE HARNESS & RELATED PARTS (TWINSTICK)



ITEM #	PART #	QTY	DESCRIPTION
1	E-6271	1	BATTERY
2	E-5878	1	HOUR METER
3	E-6054	1	SOLENOID
4	E-5873	1	START SWITCH
5	E-6403	1	CLUTCH SWITCH
6	E-6416	1	WIRE HARNESS
7	659-137P	1	BATTERY HOLD DOWN
8	E-6445	1	KEY, SET
9	F-1858	1	1/4-20 U-NUT
10	F-1019-01	1	1/4" LOCK WASHER
11	E-6207	2	FUSE, #ATC-30
12	F-1538	3	1/4-20 x 3/4" CAPSCREW
13	F-1158	2	1/4-20 STOVER NUT
14	F-1009-01	3	1/4" FLAT WASHER
15	E-6417	1	WIRE HARNESS ADAPTER (KAWASAKI)
16	E-6418	1	CABLE, BATTERY TO SOLENOID
17	E-6419	1	CABLE, SOLENOID TO ENGINE
18	F-1011-01	2	1/4-20 NUT
19	F-1015-02	2	1/4-20 x 5/8" CAPSCREW
-NOT SHOWN-			
	E-6580	1	SEAT SWITCH

WIRE HARNESS ADAPTER & RELATED PARTS FOR 24HP KAWASAKI



ITEM #	PART #	QTY	DESCRIPTION
1	F-1158	2	1/4-20 STOVER NUT
2	F-1015-02	2	1/4-20 x 5/8" CAPSCREW
3	E-6054	1	SOLENOID
4	E-6415	1	WIRE HARNESS (JOYSTICK)
-	E-6416	1	WIRE HARNESS (TWINSTICK)
5	F-1011-01	2	1/4-20 NUT
6	E-6418	1	CABLE, BATTERY TO SOLENOID
7	E-6419	1	CABLE, SOLENOID TO ENGINE
8	E-6417	1	KAWASAKI HARNESS ADAPTER

Repair Parts Manual



EDGE^{XLT}™

460

Country Clipper Division
Shivers Manufacturing Inc.
613 W. English St.
Corydon, IA 50060-0467
Ph. 641-872-2544
Fax. 641-872-1593

P-13222