

# Repair Parts Manual

# COUNTRY CLIPPER® ZERO TURN MOWER

**EDGE™**

410

**EDGE<sup>XLT</sup>™**

455

Congratulations for buying a **Country Clipper** product. Your **Country Clipper** Zero Turn Radius Riding Mower was designed and built to provide long and trouble free service. Keep in mind that it, like any other mechanical device, can be potentially dangerous if used improperly, and hazard control and accident prevention are dependent upon the awareness, concern, prudence, and proper training of personnel involved in the operation, transport, maintenance, and storage of the equipment. Study this manual and pay special attention to the important Safety Precautions on pages 3-5. Following these instructions will help you continue to enjoy the trouble-free performance expected of the **Country Clipper** product.



# COUNTRY CLIPPER EDGE-410 & EDGE XLT-455 ZERO TURN RADIUS MOWER

## TABLE OF CONTENTS

### SECTION 1 – MOWER DECKS AND RELATED PARTS

1. 48" DECK ASSEMBLY
2. 52" DECK ASSEMBLY
3. 60" DECK ASSEMBLY
4. DECK SPINDLE ASSEMBLY
5. DOUBLE IDLER & RELATED PARTS (48" DECK)
6. DOUBLE IDLER & RELATED PARTS (52" DECK)
7. DOUBLE IDLER & RELATED PARTS (60" DECK)
8. STATIONARY IDLERS & RELATED PARTS
9. LIFT HANDLE ASSEMBLY & RELATED PARTS
10. LIFT ASSEMBLY & RELATED PARTS
11. TRANSMISSION IDLERS & RELATED PARTS

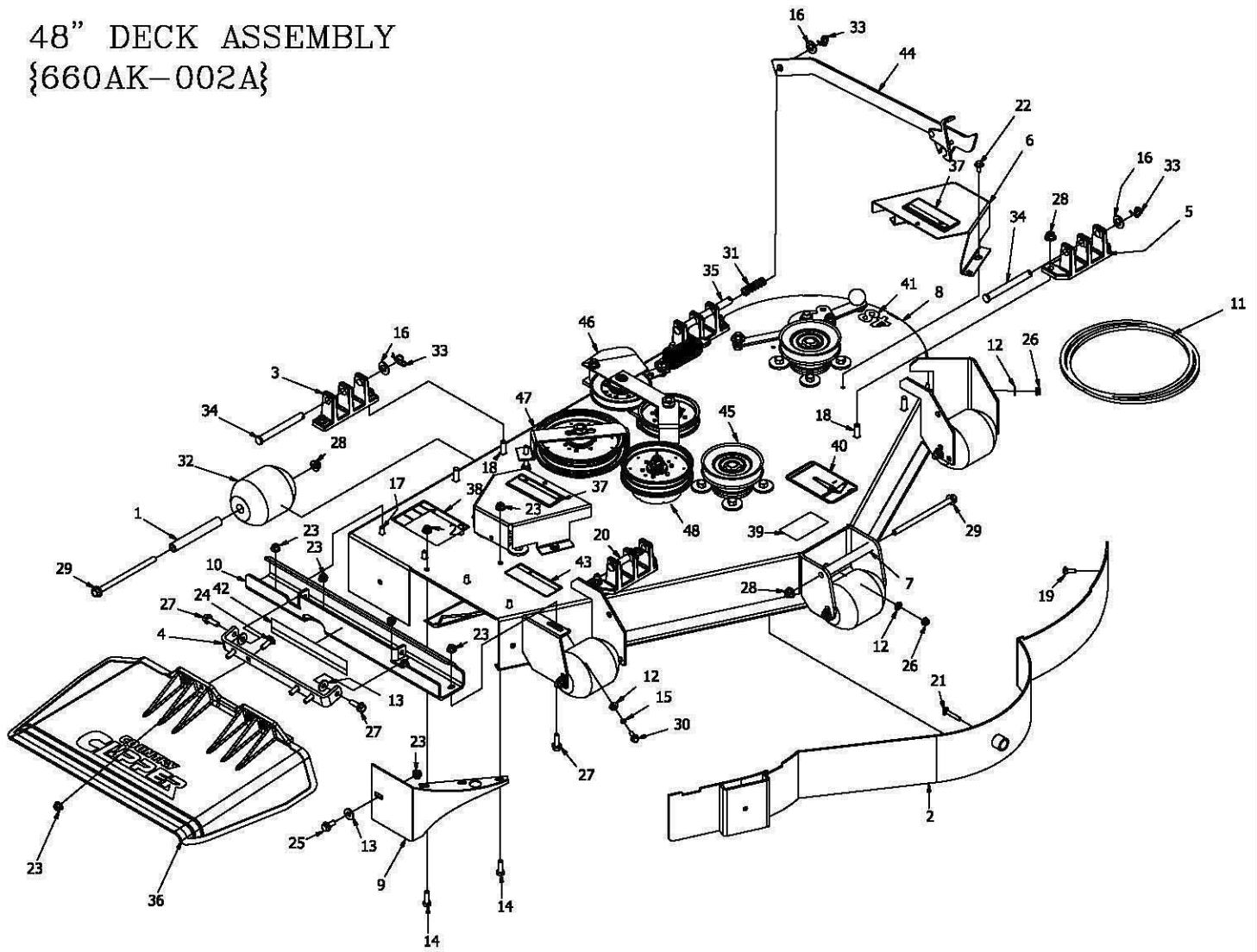
### SECTION 2 – TRACTOR FRAME AND RELATED PARTS

12. CASTER WHEEL ASSEMBLY
13. FRAME SIDES & RELATED PARTS - EDGE
14. FRAME SIDES & RELATED PARTS - EDGE XLT
15. FENDER ASSEMBLY
16. SEAT, FOOT DECK ASSEMBLY & RELATED PARTS
17. FRONT STEP ASSEMBLY - EDGE XLT

### SECTION 3 – TRACTOR DRIVE AND RELATED PARTS

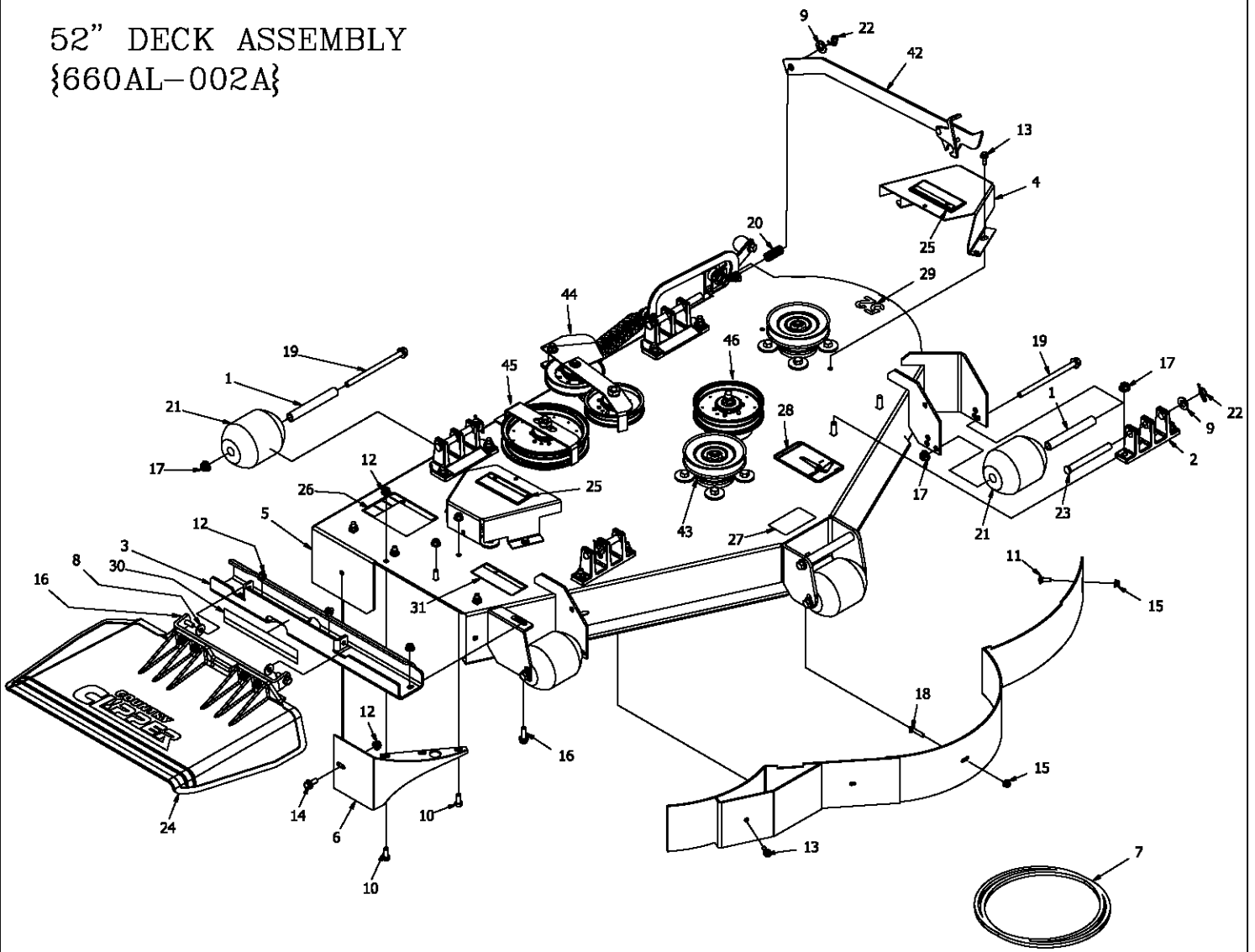
18. FUEL TANK ASSEMBLY
19. JOYSTICK STEERING CONTROL & RELATED PARTS
20. JOYSTICK ASSEMBLY (CON'T)
21. JOYSTICK STEERING CONTROL & RELATED PARTS (CON'T)
22. TWINSTICK STEERING CONTROL & RELATED PARTS
23. PARKING BRAKE ASSEMBLY & RELATED PARTS
24. MOTOR & TRANSMISSION ASS'Y & RELATED PARTS - 21.5HP KAWASAKI
25. MOTOR & TRANSMISSION ASS'Y & RELATED PARTS - 24HP KAWASAKI
26. MOTOR & TRANSMISSION ASS'Y & RELATED PARTS - 26HP KOHLER
27. E-6415 WIRE HARNESS ASS'Y & RELATED PARTS (JOYSTICK)
28. E-6416 WIRE HARNESS ASS'Y & RELATED PARTS (TWINSTICK)
29. E-6417 WIRE HARNESS ADAPTER & RELATED PARTS - KAWASAKI
30. E-6436 WIRE HARNESS ADAPTER & RELATED PARTS - KOHLER

# 48" DECK ASSEMBLY {660AK-002A}



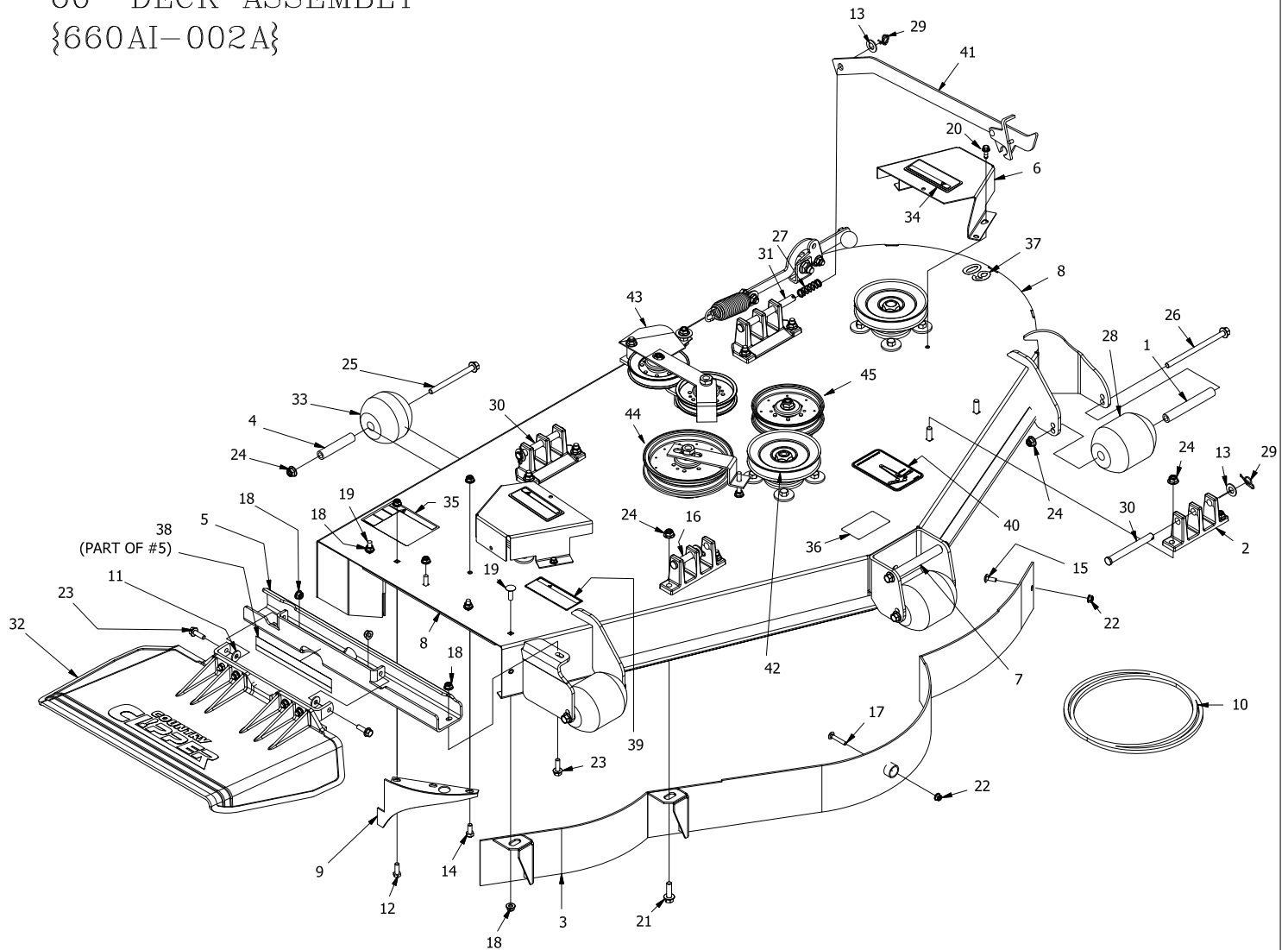
REF NO.	PART NO.	QTY.	DESCRIPTION	REF NO.	PART NO.	QTY.	DESCRIPTION
1	609-183P	5	BUSHING	26	F-2132	2	NUT, 1/4-20 NYLOC, FLANGED
2	629-241W	1	Baffle Wldt. 48"	27	F-2148	3	FHCS, 5/16-18 x 1.00, YZ, GR5
3	643-016W	2	Hanger Weldment	28	F-2151	17	Nut, 3/8-16 Nyloc, Flanged
4	643-110P	1	CHUTE HINGE	29	F-2161	6	FHCS, 3/8-16 x 6", YZ, GR5
5	651-009W	2	CASTING, HANGER, WIDE BASE	30	F-2162	1	FHCS, 1/4-20 x 3/4", GR5, YZ
6	660-146A	2	PULLEY COVER w/DECALS	31	F-2575	1	SPRING, COMP .656 X .052 X 1.97
7	660-162P	1	GRIP, STANDUP	32	H-1948	5	Roller, 3-3/4 DIA. x 4-13/16L
8	660-185A	1	48 LIGHT DECK w/DECALS	33	H-2239	4	1/2" Rue Ring
9	686-080W	1	SPLITTER BAFFLE	34	H-2240	2	1/2" x 4-1/2" Clevis Pin
10	700-076P	1	OUTLET STIFFENER	35	H-2718	1	1/2" x 5-1/2" Clevis Pin
11	D-3775-W	1	BELT, B-158	36	H-2723	1	Chute, Discharge, Small
12	F-1009-01	3	1/4" Flat Washer	-	643-111A	1	Chute, Assembly
13	F-1009-02	3	5/16" Flat Washer	37	P-10935	2	Decal, WARNING
14	F-1015-15	2	5/16-18 x 1" Capscrew	38	P-10941	1	DECAL "DANGER ROTATING BLADES"
15	F-1019-01	1	1/4" LockWasher	39	P-11413	1	DECAL, HOIST POINT
16	F-1521	9	1/2" WASHER, CUSTOM	40	P-11932	1	DECAL, JAZEE DECK BELT ROUTING
17	F-1671	4	5/16-18 x 3/4" CARRIAGE BOLT	41	P-11950	1	DECAL, DECK SIZE, 48
18	F-1672	8	3/8-16 x 1-1/4" Carraige Bolt	42	P-12496	1	DECAL, MISSING CHUTE
19	F-1823	1	Carriage Bolt, 1/4 X 3/4"	43	P-12706	1	WARNING DECAL, DISCHARGE CHUTE
20	F-1898	1	1/2 x 2-3/4" Clevis Pin	44	625-114A	1	DECK PROP ASS'Y, EDGE XLT
21	F-1935	1	CARRIAGE BOLT, 1/4 X 1-1/2"	-	625-115A	1	DECK PROP ASS'Y, EDGE
22	F-2030	4	1/4 x 5/8 Self Tapping Capscrew	45	-----	3	SPINDLE ASS'Y (SEE pg.4)
23	F-2063	15	Nut, 5/16-18 Nyloc, Flanged	46	-----	1	DOUBLE IDLER ASS'Y (SEE pg.5)
24	F-2066	4	5/16-18 x 1" CARRIAGE BOLT,	47	-----	1	REAR IDLER ASS'Y (SEE pg.7)
25	F-2120	1	FHCS, 5/16-18 x 0.75, YZ, GR5	48	-----	1	FRONT IDLER ASS'Y (SEE pg.7)

# 52" DECK ASSEMBLY {660AL-002A}



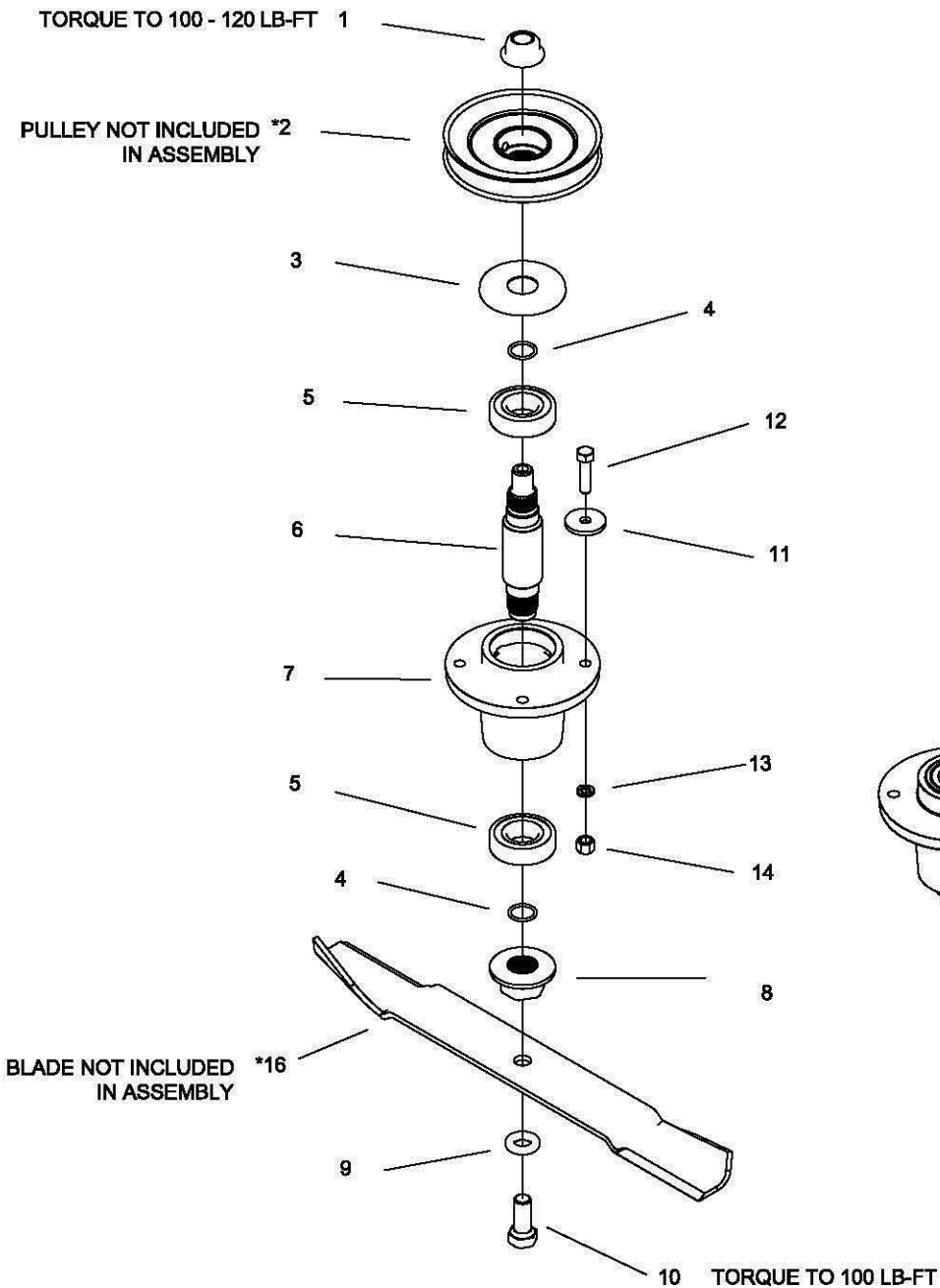
REF NO.	PART NO.	QTY.	DESCRIPTION	REF NO.	PART NO.	QTY.	DESCRIPTION
1	609-183P	5	BUSHING	20	F-2575	1	SPRING, COMP .656 X .052 X 1.97
2	643-016W	2	Hanger Weldment	21	H-1948	5	Roller, 3-3/4 DIA. x 4-13/16L
3	660-120P	1	OUTLET STIFFENER, SMALL	22	H-2239	4	1/2" Rue Ring
4	660-146A	2	PULLEY COVER w/DECALS	23	H-2240	2	1/2" x 4-1/2" Clevis Pin
5	660-186A	1	52 LIGHT DECK w/DECALS	24	643-111A	1	Chute, Discharge, Small
6	686-080W	1	SPLITTER BAFFLE	25	P-10935	2	Decal, WARNING
7	D-3914	1	BELT, BANDO " B-180"	26	P-10941	1	DECAL "DANGER ROTATING BLADES"
8	F-1009-02	2	5/16" Flat Washer	27	P-11413	1	DECAL, HOIST POINT
9	F-1521	6	1/2" WASHER, CUSTOM	28	P-11932	1	DECAL, JAZEE DECK BELT ROUTING
10	F-1546	2	5/16-18 x 3/4" Capscrew	29	P-11951	1	DECAL, DECK SIZE, 52
11	F-1823	1	Carriage Bolt, 1/4 X 3/4"	30	P-12496	1	DECAL, MISSING CHUTE
12	F-2063	15	Nut, 5/16-18 Nyloc, Flanged	31	P-12706	1	WARNING DECAL, DISCHARGE CHUTE
13	F-2119	5	FHCS, 1/4-20 x 0.75, YZ, LOCK PATCH, GR5	42	625-114A	1	DECK PROP ASS'Y, EDGE XLT
14	F-2120	1	FHCS, 5/16-18 x 0.75, YZ, GR5	-	625-115A	1	DECK PROP ASS'Y, EDGE
15	F-2132	2	NUT, 1/4-20 NYLOC, FLANGED	43	-----	1	SPINDLE ASS'Y (SEE pg.4)
16	F-2148	3	FHCS, 5/16-18 x 1.00, YZ, GR5	44	-----	1	DOUBLE IDLER ASS'Y (SEE pg.5)
17	F-2151	21	Nut, 3/8-16 Nyloc, Flanged	45	-----	1	REAR IDLER ASS'Y (SEE pg.7)
18	F-2157	1	CARRIAGE BOLT, 1/4 X 1-1/4"	46	-----	1	FRONT IDLER ASS'Y (SEE pg.7)
19	F-2161	6	FHCS, 3/8-16 x 6", YZ, GR5				

# 60" DECK ASSEMBLY {660AI-002A}



REF NO.	PART NO.	QTY.	DESCRIPTION	REF NO.	PART NO.	QTY.	DESCRIPTION
1	609-183P	3	BUSHING	25	F-2160	2	FHCS, 3/8-16 x 4 1/2", YZ, GR5
2	643-016W	2	Hanger Weldment	26	F-2161	4	FHCS, 3/8-16 x 6", YZ, GR5
3	643-104W	1	60" DUST BAFFLE WELDMENT	27	F-2575	1	SPRING, COMP .656 X .052 X 1.97
4	643-126P	2	BUSHING	28	H-1948	3	Roller, 3-3/4 DIA. x 4-13/16L
5	660-120P	1	OUTLET STIFFENER, SMALL	29	H-2239	4	1/2" Rue Ring
6	660-146P	2	PULLEY COVER w/DECALS	30	H-2240	2	1/2" x 4-1/2" Clevis Pin
7	660-162P	1	GRIP, STANDUP	31	H-2718	1	1/2" x 5-1/2" Clevis Pin
8	660-187A	1	60 LIGHT DECK w/DECALS	32	H-2723	1	Chute, Discharge, Small
9	686-006W	1	SPLITTER BAFFLE	33	H-2772	2	Roller, 3-3/4 DIA. x 3 1/4"L
10	D-3914	1	BELT, BANDO " B-180"	34	P-10935	2	Decal, WARNING
11	F-1009-02	2	5/16" Flat Washer	35	P-10941	1	DECAL "DANGER ROTATING BLADES"
12	F-1015-14	1	5/16-18 x 7/8" Capscrew	36	P-11413	1	DECAL, HOIST POINT
13	F-1521	6	1/2" WASHER, CUSTOM	37	P-11952	1	DECAL, DECK SIZE, 60
14	F-1546	1	5/16-18 x 3/4" Capscrew	38	P-12496	1	DECAL, MISSING CHUTE
15	F-1823	1	Carriage Bolt, 1/4 X 3/4"	39	P-12706	1	WARNING DECAL, DISCHARGE CHUTE
16	F-1889	1	1/2 x 2-5/8" Clevis Pin	40	P-12837	1	DECAL, DECK BELT ROUTING
17	F-1935	1	CARRIAGE BOLT, 1/4 X 1-1/2"	41	625-114A	1	DECK PROP ASS'Y, EDGE XLT
18	F-2063	15	Nut, 5/16-18 Nyloc, Flanged	--	625-115A	1	DECK PROP ASS'Y, EDGE
19	F-2066	8	5/16-18 x 1" CARRIAGE BOLT,	42	-----	1	SPINDLE ASS'Y (SEE pg.4)
20	F-2119	4	FHCS, 1/4-20 x 0.75, YZ, LOCK PATCH, GR5	43	-----	1	DOUBLE IDLER ASS'Y (SEE pg.5)
21	F-2125	2	FHCS, 3/8-16 x 1.25, YZ, GR5	44	-----	1	REAR IDLER ASS'Y (SEE pg.7)
22	F-2132	2	NUT, 1/4-20 NYLOC, FLANGED	45	-----	1	FRONT IDLER ASS'Y (SEE pg.7)
23	F-2148	3	FHCS, 5/16-18 x 1.00, YZ, GR5				
24	F-2151	20	Nut, 3/8-16 Nyloc, Flanged				

# DECK SPINDLE ASSEMBLY 629FN-001A

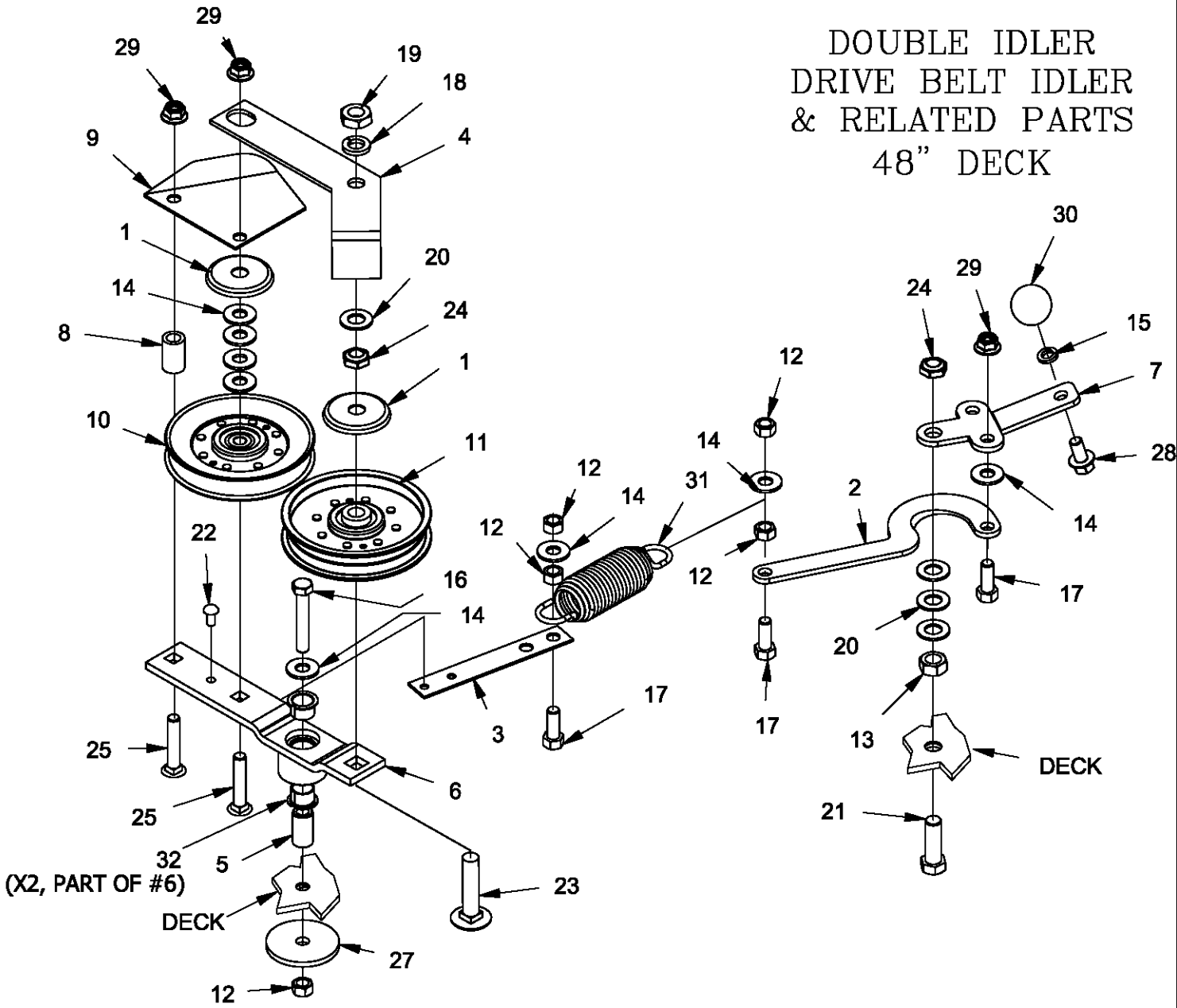


15 (APPLY THIN LAYER OF CHEVRON RYKOTAC GREASE TO THE TOP SURFACES OF THE BEARING AND HOUSING PRIOR TO INSTALLING ITEM #3 (BEARING CAP).

NEW MOWERS ARE SHIPPED WITH 3 to 4 oz OF CHEVRON SRI NLGI 2 GREASE INSIDE EACH SPINDLE HOUSING.

REF NO.	PART NO.	QTY.	DESCRIPTION	REF NO.	PART NO.	QTY.	DESCRIPTION	
1	F-2078	1	3/4-6 TOP LOCK NUT	14	F-1573	4	3/8-24 LOCK NUT	
2	668-037P	*	48" DECK PULLEY	15	H-2707	1	GREASE PACKET	
*	668-038P	*	52" DECK PULLEY	16	H-2882	1	BLADE, HIGH LIFT, 17" CUT 48"	
*	668-039P	*	60" DECK PULLEY	-	H-2883	-	BLADE, HIGH LIFT, 18 3/8" CUT 52"	
3	609-292P	1	CAP, BEARING	-	H-2655	-	BLADE, HIGH LIFT, 21" CUT 60"	
4	H-2639	2	O'RING, RUBBER	OPTIONAL BLADES			-	BLADE, LOW LIFT, 17" CUT 48"
5	D-3867	2	BEARING, #6206				-	H-2659
6	609-289P	1	SHAFT, SPINDLE	-	H-2660	-	BLADE, LOW LIFT, 21" CUT, 60"	
7	609-285P	1	HOUSING, SPINDLE	-	H-2661	-	BLADE, GATOR, 17" CUT 48"	
8	609-288P	1	BLADE DRIVER	-	H-2665	-	BLADE, GATOR, 18 3/8" CUT 52"	
9	660-099P	1	BLADE WASHER	-	H-2666	-	BLADE, GATOR, 21" CUT 60"	
10	F-2073	1	5/8-11 X 1.5 HHCS GR. 8	-	H-2667	-		
11	609-034P	4	SPINDLE SPACER, WASHER					
12	F-1572	4	3/8-24 X 1.5 CAP SCREW					
13	F-1019-03	4	3/8 LOCK WASHER					

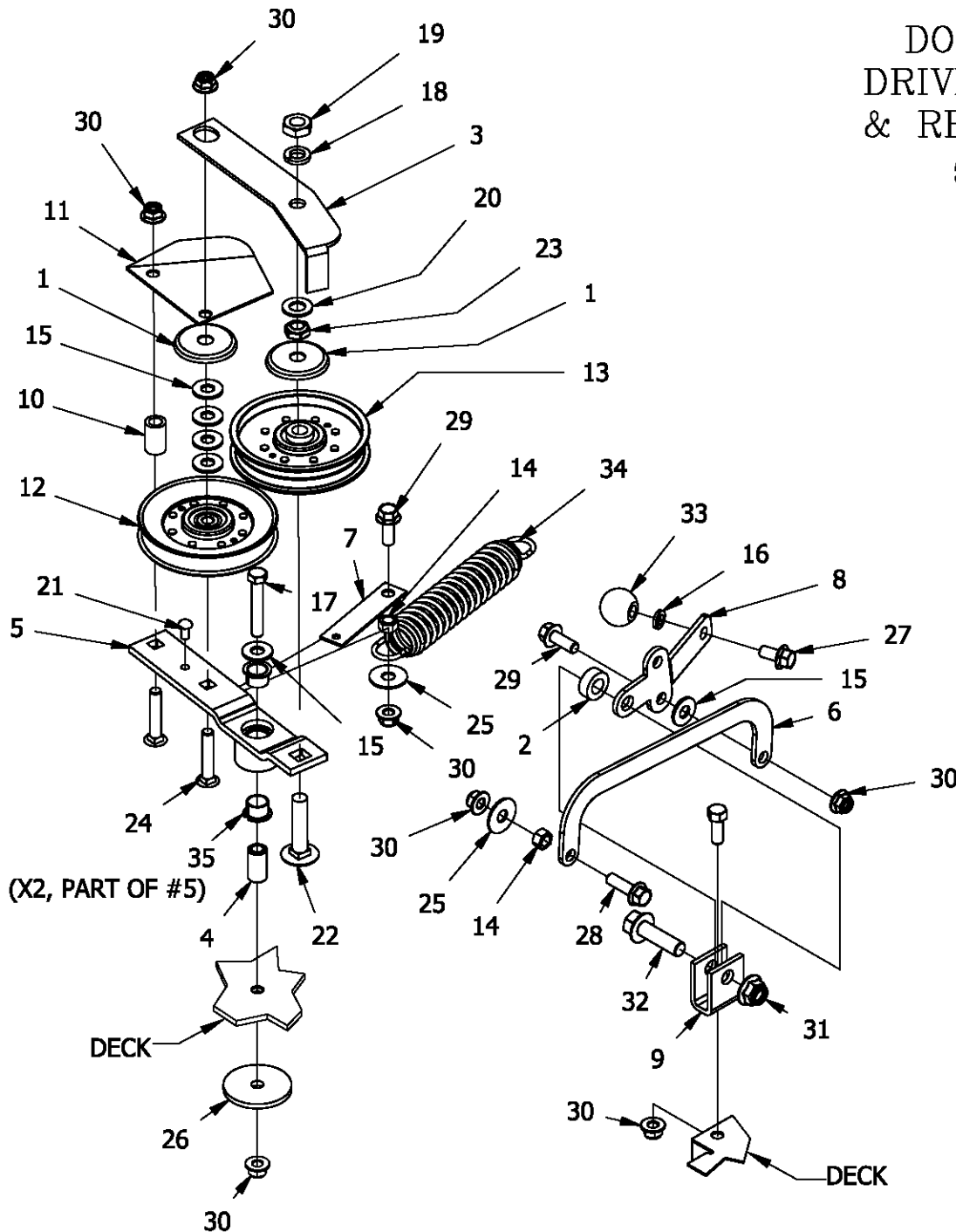
# DOUBLE IDLER DRIVE BELT IDLER & RELATED PARTS 48" DECK



REF NO.	PART NO.	QTY.	DESCRIPTION	REF NO.	PART NO.	QTY.	DESCRIPTION
1	620-201P	4	WASHER, BEARING CAP	17	F-1394	3	3/8-16 x 1" Capscrew
2	660-031P	1	Belt Tightner Arm	18	F-1464	2	1/2" LOCKWASHER
3	660-081P	1	EXTENSION FOR SPRING	19	F-1489	2	1/2-13 Hex Jam Nut
4	660-110P	1	BELT KEEPER, B BELT	20	F-1521	9	1/2" WASHER, CUSTOM
5	660-135P	1	MOUNTING PIN	21	F-1526	1	1/2-13 x1-1/2" Capscrew
6	660-147A	1	IDLER ARM ASSEMBLY	22	F-1733	1	1/4" x 1/2" DRIVE SCREW
7	660-184P	1	HANDLE, BELT TENSIONER	23	F-1822	1	1/2-13 X 2-1/4" CARRIAGE BOLT
8	668-021P	1	SPACER, BELT GUARD	24	F-1966	3	1/2-13 THIN NYLOC NUT
9	668-029P	1	BELT GUARD	25	F-1976	2	3/8-16 x 2" Carraige Bolt
10	D-3923	1	PULLEY, V-IDLER, 4.59 OD, AB, NTN	26	F-2063	15	Nut, 5/16-18 Nyloc, Flanged
11	D-3924	1	PULLEY, FLAT IDLER, NTN, DBL INSERT	27	F-2102	1	WASHER.406ID X 2.25OD X 7GA THK
12	F-1005-03	5	3/8-16 Stover Nut	28	F-2124	1	FHCS, 3/8-16 x 0.75, YZ, GR5
13	F-1005-05	1	1/2-13 Stover Nut	29	F-2151	17	Nut,3/8-16 Nyloc, Flanged
14	F-1009-03	8	3/8" Flat Washer	30	H-2405	1	BALL, 1-1/4"
15	F-1019-03	13	3/8" LOCKWASHER	31	H-2619	1	SPRING,5 X 1-1/2,TAPERED ENDS
16	F-1268	1	3/8-16 x2-1/4" Capscrew	32	D-3730	2	FLANGED BUSHING

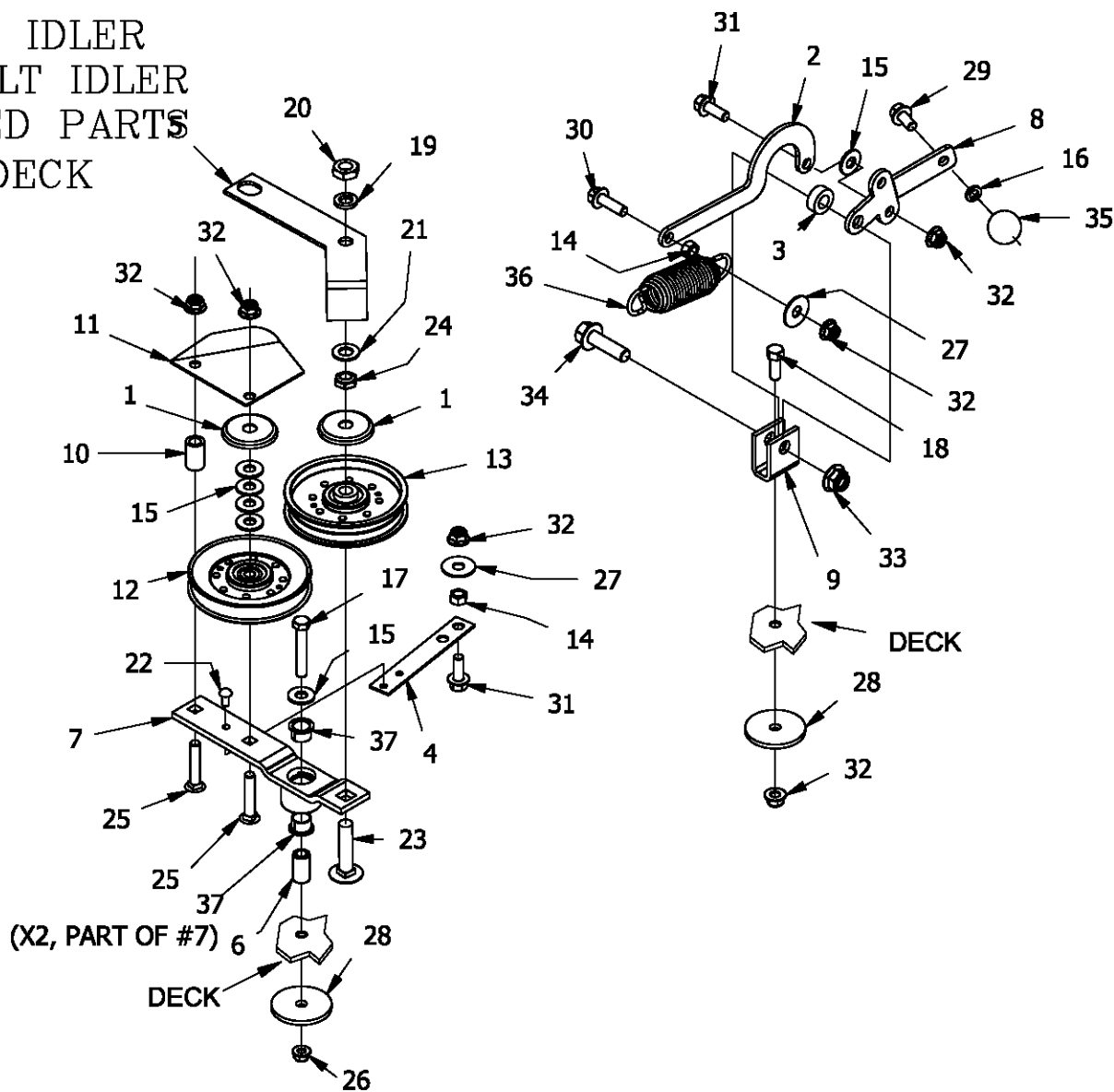


# DOUBLE IDLER DRIVE BELT IDLER & RELATED PARTS 52" DECK



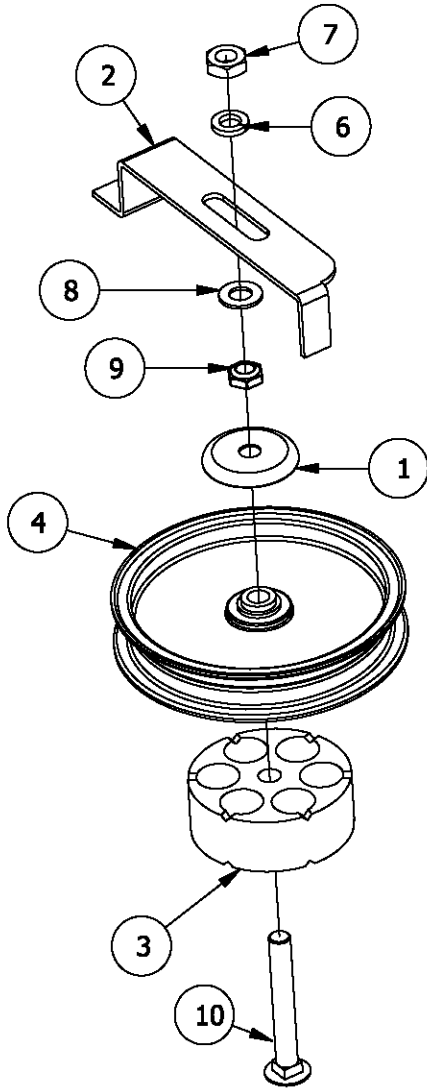
REF NO.	PART NO.	QTY.	DESCRIPTION	REF NO.	PART NO.	QTY.	DESCRIPTION
1	620-201P	4	WASHER, BEARING CAP	19	F-1489	2	1/2-13 Hex Jam Nut
2	660-038P	1	3/8" Spacer	20	F-1521	6	1/2" WASHER, CUSTOM
3	660-107P	1	BELT KEEPER	21	F-1733	1	1/4" x 1/2" DRIVE SCREW
4	660-135P	1	MOUNTING PIN	22	F-1822	1	1/2-13 X 2-1/4" CARRIAGE BOLT
5	660-147A	1	IDLER ARM ASSEMBLY	23	F-1966	2	1/2-13 THIN NYLOC NUT
6	660-172P	1	LINK, BELT TENSION	24	F-1976	2	3/8-16 x 2" Carriage Bolt
7	660-173P	1	SPRING EXTENSION	25	F-2083	2	WASHER, 3/8 FENDER
8	660-184P	1	HANDLE, BELT TENSIONER	26	F-2102	1	WASHER.406ID X 2.25OD X 7GA THK
9	661-015P	1	SHACKLE	27	F-2124	1	FHCS, 3/8-16 x 0.75, YZ, GR5
10	668-021P	1	SPACER, BELT GUARD	28	F-2125	1	FHCS, 3/8-16 x 1.25, YZ, GR5
11	668-029P	1	BELT GUARD	29	F-2141	2	FHCS, 3/8-16 x 1", YZ, GR5
12	D-3923	1	PULLEY, V-IDLER, 4.59 OD, AB, NTN	30	F-2151	21	Nut,3/8-16 Nyloc, Flanged
13	D-3924	1	PULLEY, FLAT IDLER, NTN, DBL INSERT	31	F-2152	2	Nut,1/2-13 Nyloc, Flanged
14	F-1005-03	2	3/8-16 Stover Nut	32	F-2154	1	FHCS, 1/2-13 x1-3/4", YZ, GR5
15	F-1009-03	6	3/8" Flat Washer	33	H-2405	1	BALL, 1-1/4"
16	F-1019-03	13	3/8" LOCKWASHER	34	H-2619	1	SPRING,5 X 1-1/2,TAPERED ENDS
17	F-1268	1	3/8-16 x2-1/4" Capscrew	35	D-3730	2	FLANGED BUSHING
18	F-1464	2	1/2" LOCKWASHER				

# DOUBLE IDLER DRIVE BELT IDLER & RELATED PARTS 60" DECK

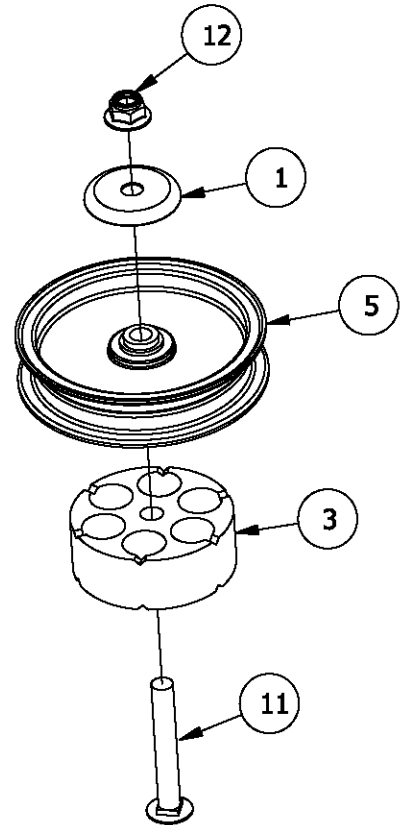


REF NO.	PART NO.	QTY.	DESCRIPTION	REF NO.	PART NO.	QTY.	DESCRIPTION
1	620-201P	4	WASHER, BEARING CAP	20	F-1489	2	1/2-13 Hex Jam Nut
2	660-031P	1	Belt Tightner Arm	21	F-1521	6	1/2" WASHER, CUSTOM
3	660-038P	1	3/8" Spacer	22	F-1733	1	1/4" x 1/2" DRIVE SCREW
4	660-081P	1	EXTENSION FOR SPRING	23	F-1822	1	1/2-13 X 2-1/4" CARRIAGE BOLT
5	660-110P	1	BELT KEEPER, B BELT	24	F-1966	2	1/2-13 THIN NYLOC NUT
6	660-135P	1	MOUNTING PIN	25	F-1976	2	3/8-16 x 2" Carraige Bolt
7	660-147A	1	IDLER ARM ASSEMBLY	26	F-2063	15	Nut, 5/16-18 Nyloc, Flanged
8	660-184P	1	HANDLE, BELT TENSIONER	27	F-2083	2	WASHER, 3/8 FENDER
9	661-015P	1	SHACKLE	28	F-2102	2	WASHER.406ID X 2.25OD X 7GA THK
10	668-021P	1	SPACER, BELT GUARD	29	F-2124	1	FHCS, 3/8-16 x 0.75, YZ, GR5
11	668-029P	1	BELT GUARD	30	F-2125	2	FHCS, 3/8-16 x 1.25, YZ, GR5
12	D-3923	1	PULLEY, V-IDLER, 4.59 OD, AB, NTN	31	F-2141	2	FHCS, 3/8-16 x 1", YZ, GR5
13	D-3924	1	PULLEY, FLAT IDLER, NTN, DBL INSERT	32	F-2151	20	Nut,3/8-16 Nyloc, Flanged
14	F-1005-03	2	3/8-16 Stover Nut	33	F-2152	2	Nut,1/2-13 Nyloc, Flanged
15	F-1009-03	6	3/8" Flat Washer	34	F-2154	1	FHCS, 1/2-13 x1-3/4", YZ, GR5
16	F-1019-03	13	3/8" LOCKWASHER	35	H-2405	1	BALL, 1-1/4"
17	F-1268	1	3/8-16 x2-1/4" Capscrew	36	H-2619	1	SPRING,5 X 1-1/2,TAPERED ENDS
18	F-1394	1	3/8-16 x 1" Capscrew	37	D-3730	1	FLANGED BUSHING
19	F-1464	2	1/2" LOCKWASHER				

## RIGHT REAR STATIONARY IDLER ASSEMBLY

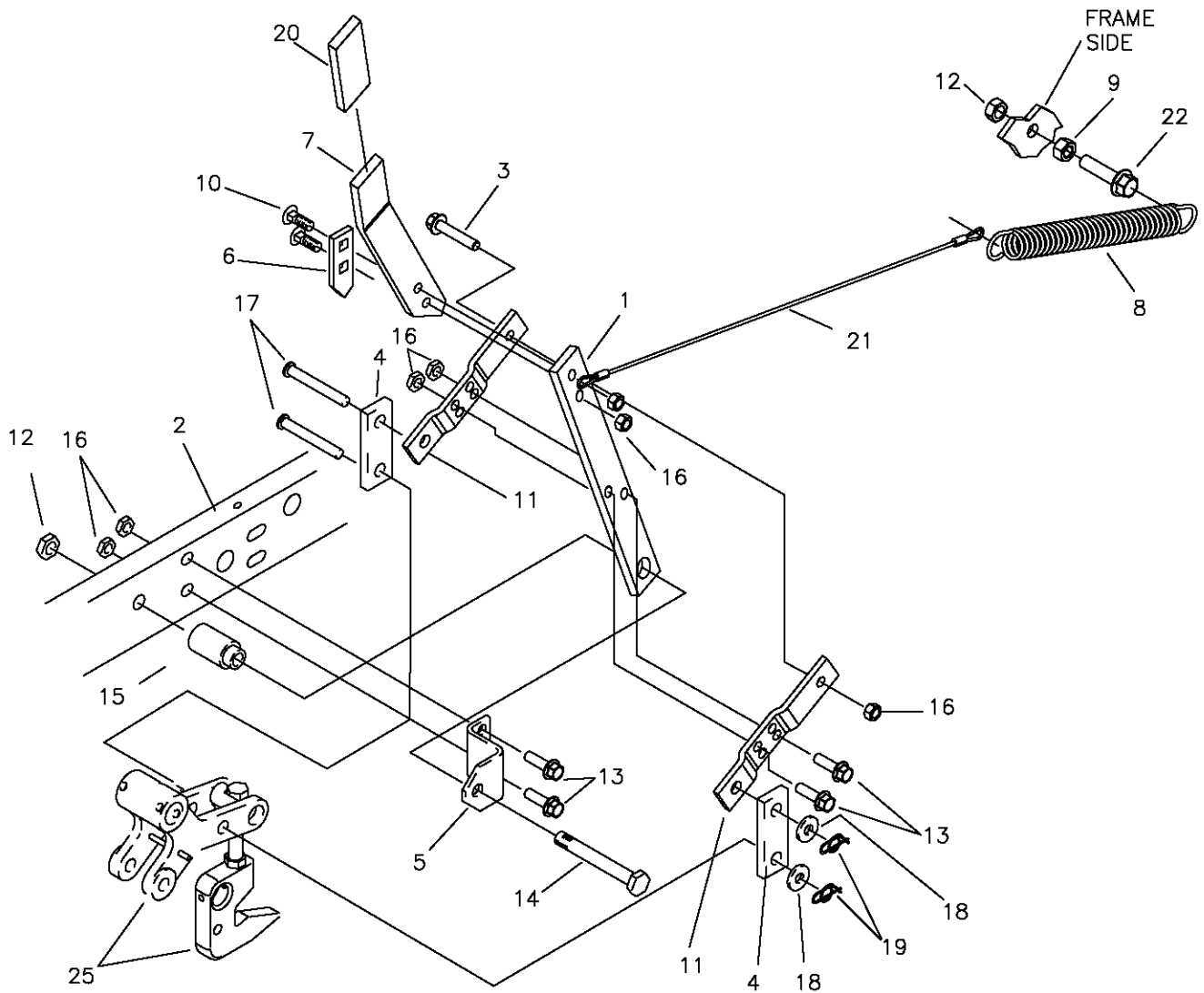


## FRONT STATIONARY IDLER ASSEMBLY



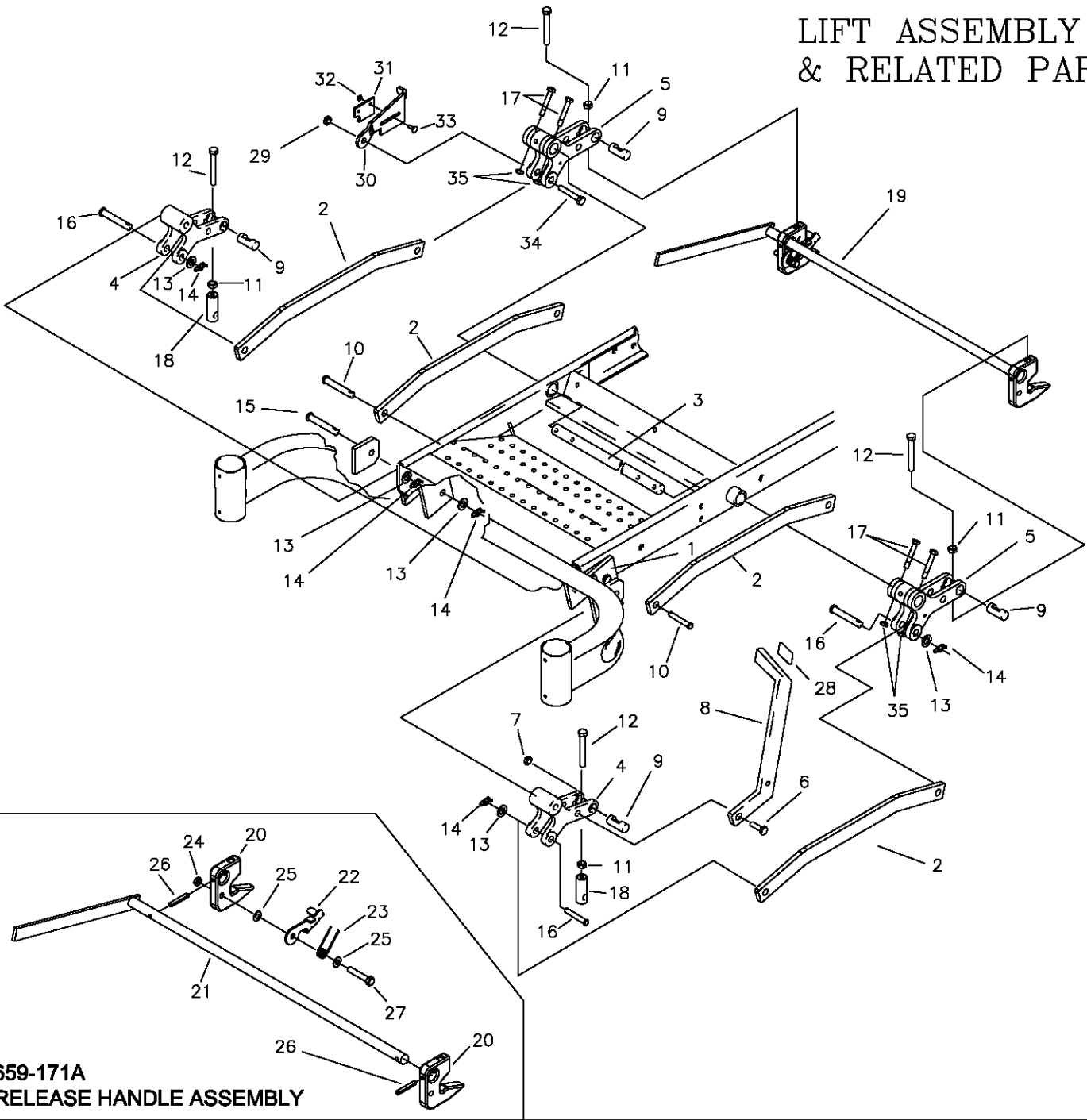
REF NO.	PART NO.	QTY.	DESCRIPTION	REF NO.	PART NO.	QTY.	DESCRIPTION
1	620-201P	4	WASHER, BEARING CAP	7	F-1489	2	1/2-13 Hex Jam Nut
2	660-112P	1	BELT KEEPER	8	F-1521	6	1/2" WASHER, CUSTOM
3	660-148P	2	SPACER, IDLER MOUNT	9	F-1966	2	1/2-13 THIN NYLOC NUT
4	D-3903	1	PULLEY, FLAT IDLER, 6"	10	F-2079	1	CARRIAGE BOLT 1/2-13 X 3-3/4"
5	D-3904	1	PULLEY, FLAT IDLER, 5"	11	F-2106	1	1/2-13 X 3-1/2" CARRIAGE BOLT
6	F-1464	2	1/2" LOCKWASHER	12	F-2152	2	Nut, 1/2-13 Nyloc, Flanged

# LIFT HANDLE ASSEMBLY & RELATED PARTS



REF NO.	PART NO.	QTY.	DESCRIPTION	REF NO.	PART NO.	QTY.	DESCRIPTION
1	709-102P	1	LIFT HANDLE, LOWER	15	642-095P	1	HANDLE PIVOT PIN
2	659-022W	1	FRAME WELDMENT, LH.	16	F-1005-03	2	NUT, 3/8-16 LOCKNUT (STOVER)
3	F-2126	1	3/8-16 X 2" CAPSCREW	17	F-1889	2	CLEVIS PIN, 1/2 X 2 5/8"
4	642-061P	2	HANDLE LINK	18	F-1521	2	1/2" FLAT WASHER
5	642-041P	1	HANDLE PIVOT BRACKET	19	H-2239	2	RUE RING, 1/2"
6	642-127P	1	TOP PEG LATCH PLATE	20	H-2324	1	VINYL GRIP, 3/8 X 1 1/2"
7	659-355P	1	LIFY HANDLE, UPPER	21	H-2460	1	SPRING EXTENSION CABLE
8	H-1610	1	SPRING, 1 1/2" OD. X 8"	22	F-2128	1	FHCS 1/2-13 X 2" GR. 5
9	F-1462	1	NUT, 1/2-20 JAM	23	F-2151	5	NUT, 3/8-16, NYLOC FLANGED
10	F-1672	2	CARRIAGE BOLT, 3/8-16 X 1 1/4"	24	F-2147	2	FHCS 3/8-16 X 1-1/2", YZ GR. 5
11	642-060P	2	SPRING ANCHOR PLATE	25	-----	-	SEE PAGE 9
12	F-2152	2	NUT, 1/2-13, NYLOC FLANGED				
13	F-2125	2	1/2-13 X 1 1/4" GR. 5				
14	F-1439	1	1/2-13 X 3" GR. 5				

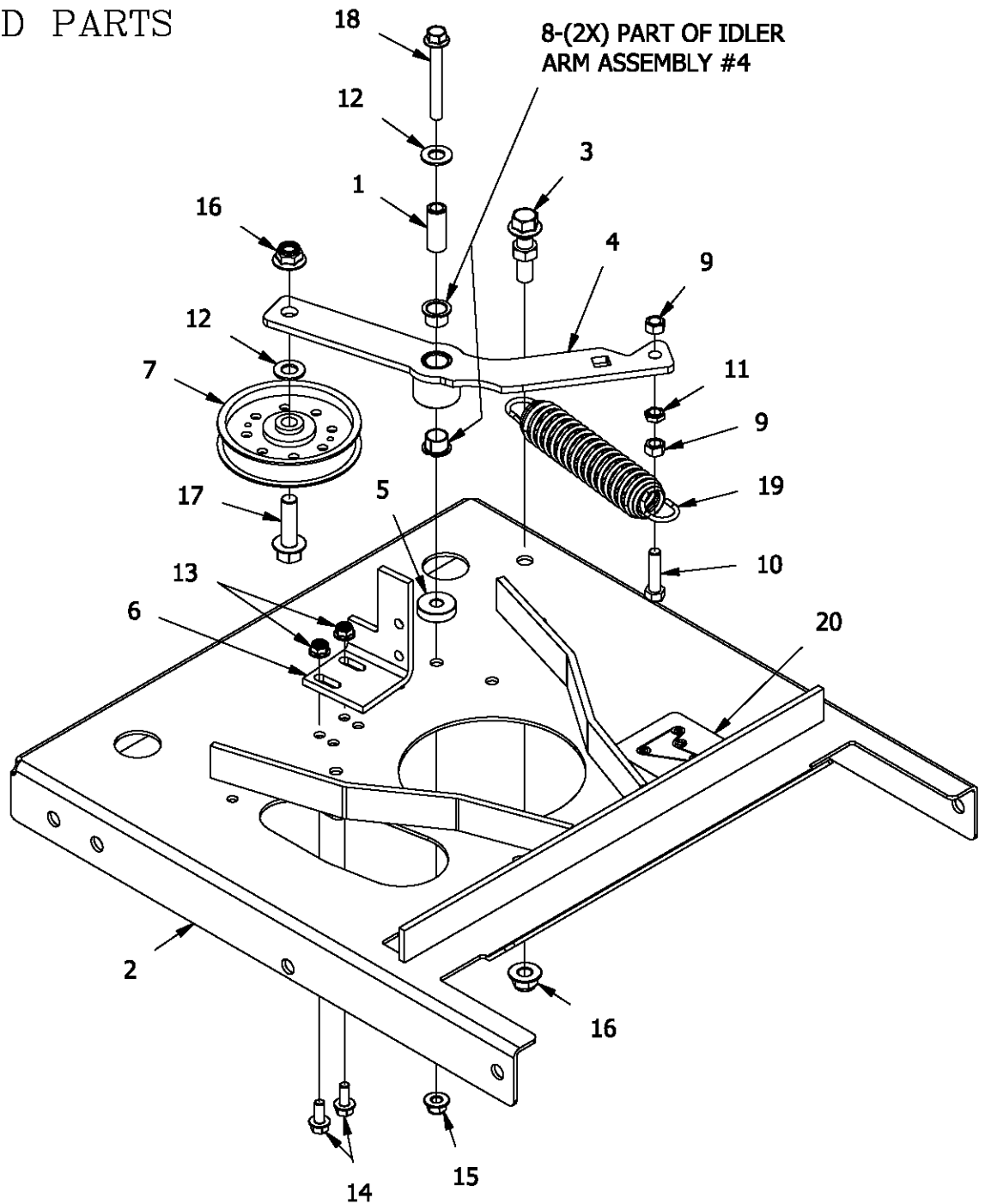
# LIFT ASSEMBLY & RELATED PARTS



**659-171A  
RELEASE HANDLE ASSEMBLY**

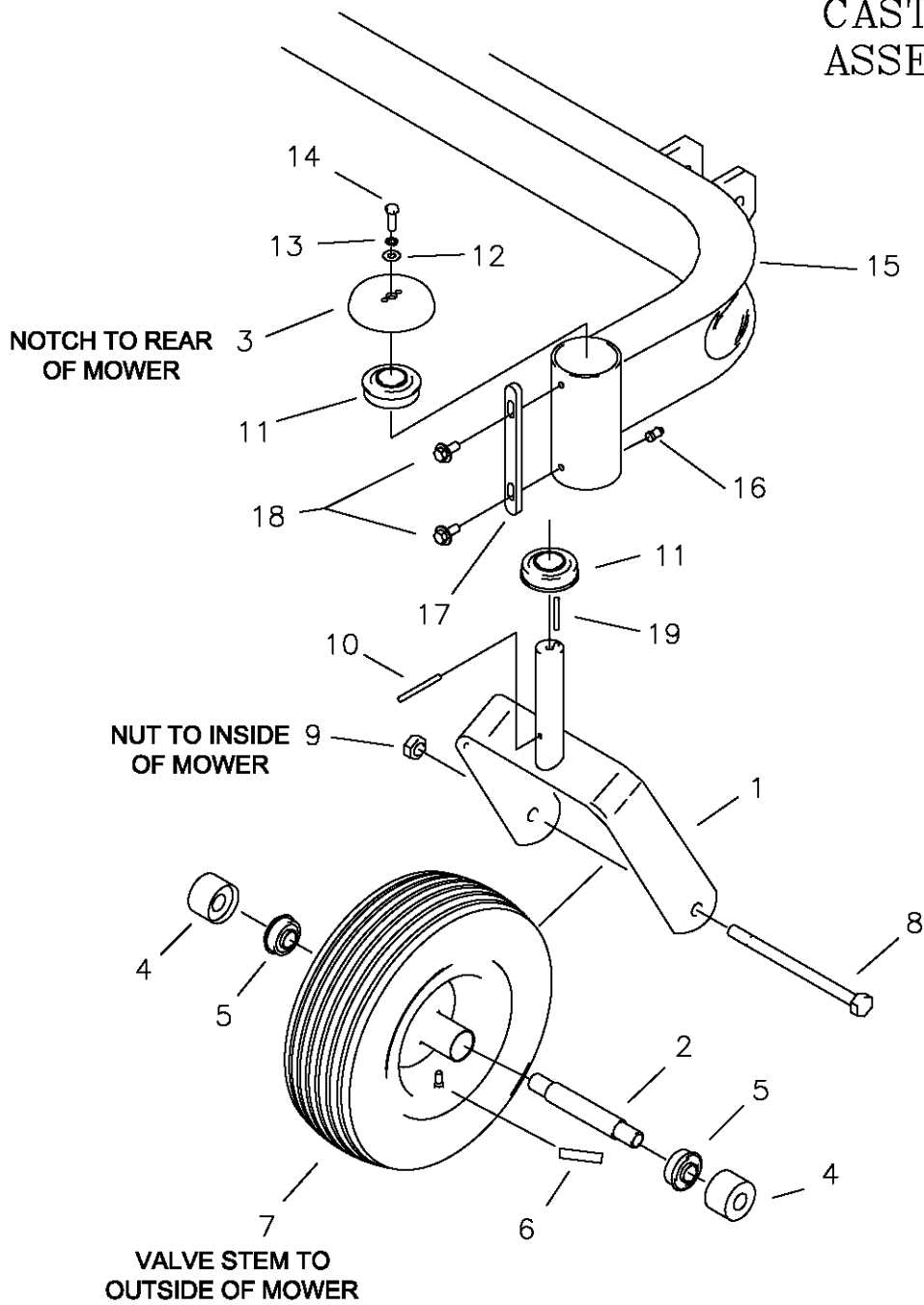
ITEM #	PART #	QTY	DESCRIPTION	ITEM #	PART #	QTY	DESCRIPTION
1	642-063P	2	DRAG BAR TAB	19	659-171A	1	RELEASE HANDLE ASSEMBLY
2	659-299P	4	DRAG LINK BAR	20	659-140P	2	DECK HOOK
3	620-051P	1	LIFT BAR	21	659-148W	1	RELEASE HANDLE WELDMENT
4	642-081P	2	LIFT SLEEVE, FRONT	22	659-145P	1	HOOK KEEPER
5	642-193P	2	LIFT SLEEVE, REAR	23	H-2547	1	SPRING, TORSION
6	F-1879	1	5/16-18 X 1 1/4" GR.5	24	F-1005-03	1	NUT, 3/8-16, STOVER
7	F-1125	1	5/16-18 STOVER NUT	25	F-1009-03	2	WASHER, FLAT, 3/8"
8	659-056P	1	DECK LIFT PEDAL	26	F-2187	2	PIN, GROOVED, 1/4X1.50", HARDENED
9	642-177P	4	HANGER PIN	27	F-1073	1	CAPSCREW, 3/8-16 X 2, GR. 5
10	F-1815	2	CLEVIS PIN, 1/2 X 1 1/4"	28	H-2401	1	TREAD PAD
11	F-1489	4	NUT, 1/2" JAM	29	F-1005-05	1	1/2" STOVER NUT
12	F-1936	4	1/2-13 X 3 1/2, 2" THREAD	30	659-146P	1	LATCH PLATE
13	F-1521	8	WASHER, 1/2 NARROW	31	659-170P	1	PLATE, CATCH
14	H-2239	8	RUE RING, 1/2"	32	F-1158	2	NUT, 1/4" STOVER
15	H-2240	2	CLEVIS PIN, 1/2 X 4 1/2"	33	F-1823	2	CARRIAGE BOLT, 1/4-20 X 3/4"
16	F-1898	3	CLEVIS PIN, 1/2 X 2 3/4"	34	F-1828	1	1/2-13 x 3-1/2" CAPSCREW
17	F-2039	4	5/16-24 x 2" HHCS	35	F-2041	4	5/16-24 JAM NUT
18	642-175P	2	ADJUSTABLE HANGER END				

# TRANSMISSION IDLERS & RELATED PARTS



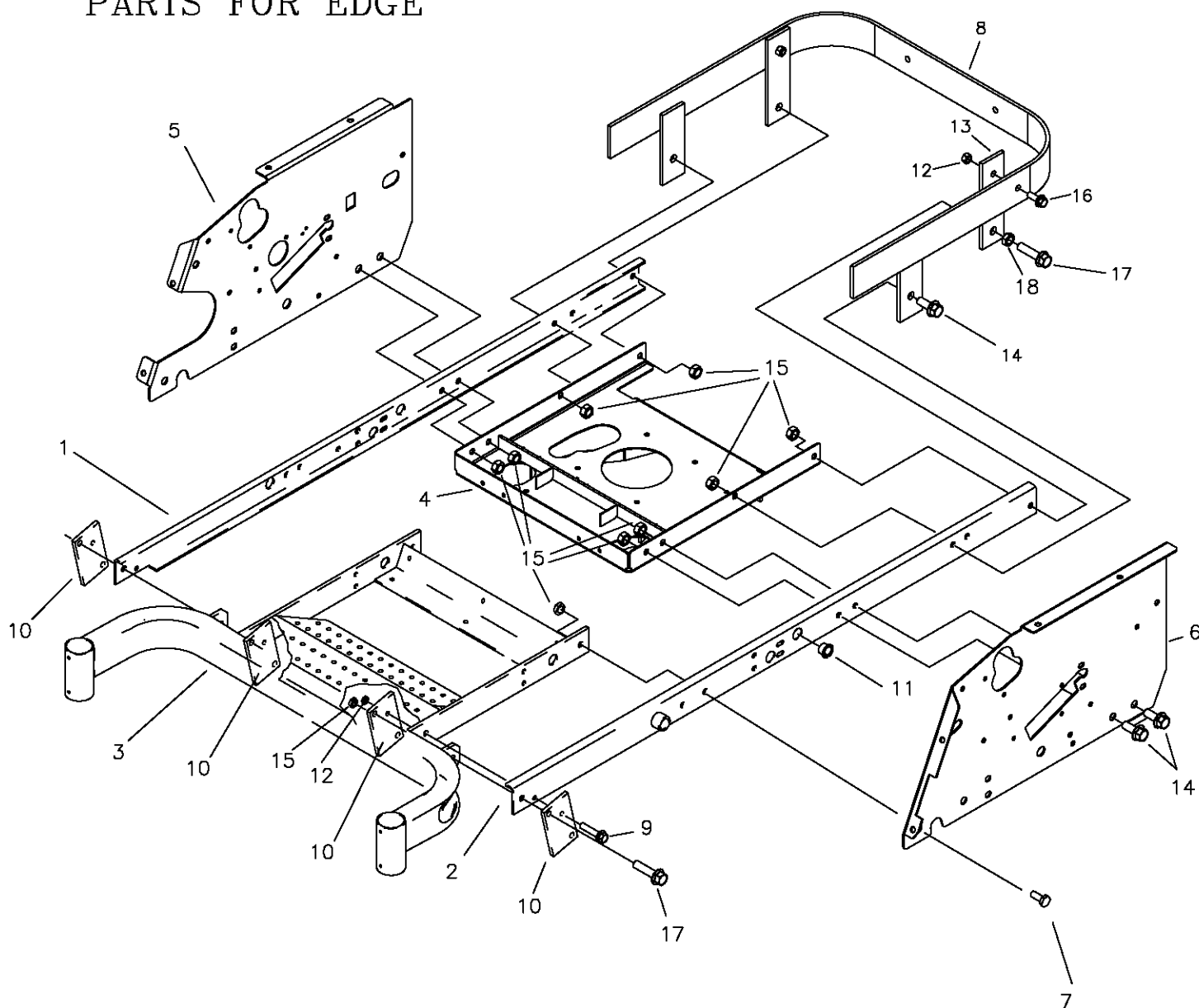
ITEM #	PART #	QTY	DESCRIPTION	ITEM #	PART #	QTY	DESCRIPTION
1	659-085P	1	Mounting Pin	11	F-1486	3	3/8-16 Jam Nut
2	700-107W	1	WLDT, MOTOR MOUNT	12	F-1521	15	1/2" WASHER, CUSTOM
3	700-146A	1	SPRING ANCHOR ASS'Y	13	F-2063	52	Nut, 5/16-18 Nyloc, Flanged
4	707-012A	1	S/A, IDLER ARM	14	F-2120	28	FHCS, 5/16-18 x 0.75, YZ, GR5
5	707-022P	1	SPACER, 3/8X1-1/4, .500	15	F-2151	23	Nut, 3/8-16 Nyloc, Flanged
6	707-033P	1	CLUTCH STOP	16	F-2152	16	Nut, 1/2-13 Nyloc, Flanged
7	D-3922	1	4" Idler Pulley 1/2" Bore	17	F-2154	1	FHCS, 1/2-13 x1-3/4", YZ, GR5
8	D-3730	4	Flanged Bushing 5/8" Bore	18	F-2180	1	FHCS, 3/8-16 x 3", YZ, GR5
9	F-1005-03	2	3/8-16 Stover Nut	19	H-2619	1	SPRING, 5 X 1-1/2, TAPERED ENDS
10	F-1015-27	1	3/8-16 x 1-1/2" Capscrew	20	P-12918	1	DECAL, HYDRO BELT ROUTING

# CASTER WHEEL ASSEMBLY



ITEM #	PART #	QTY	DESCRIPTION	ITEM #	PART #	QTY	DESCRIPTION
1	617-375W	2	CASTER YOKE WELDMENT	11	D-2008-02	4	BEARING, SPD SF-16-32
-	659-181A	1	FRONT WHEEL ASS'Y (LH)	12	F-1009-02	2	5/16" FLAT WASHER
-	659-182A	1	FRONT WHEEL ASS'Y (RH)	13	F-1019-02	2	5/16" LOCK WASHER
2	611-136P	2	BEARING SPACER	14	F-1863	2	5/16"-18 X 1" W/NYLOC PATCH
3	636-176P	2	BEARING CAP, RED	15	659-351W	1	FRONT AXLE (EDGE)
4	611-135P	4	BEARING SHIELD	-	659-287W	1	FRONT AXLE (EDGE XLT)
5	D-3432	4	BEARING, 5/8 ID X 1-3/8 OD	16	H-1056	2	GREASE ZERK
6	P-11384	2	DECAL, 12 PSI	17	659-185P	2	STOP TAB
7	D-3574	2	13" TIRE W/RIM	18	F-2030	4	1/4" X 5/8" SELF TAPPING SCREW
8	F-1129	2	1/2-13 X 8" GR. 5 BOLT	19	F-1855	2	3/16" X 1" ROLL PIN
9	F-1005-05	2	1/2-13 LOCK NUT				
10	F-1456	2	3/16" X 2" ROLL PIN				

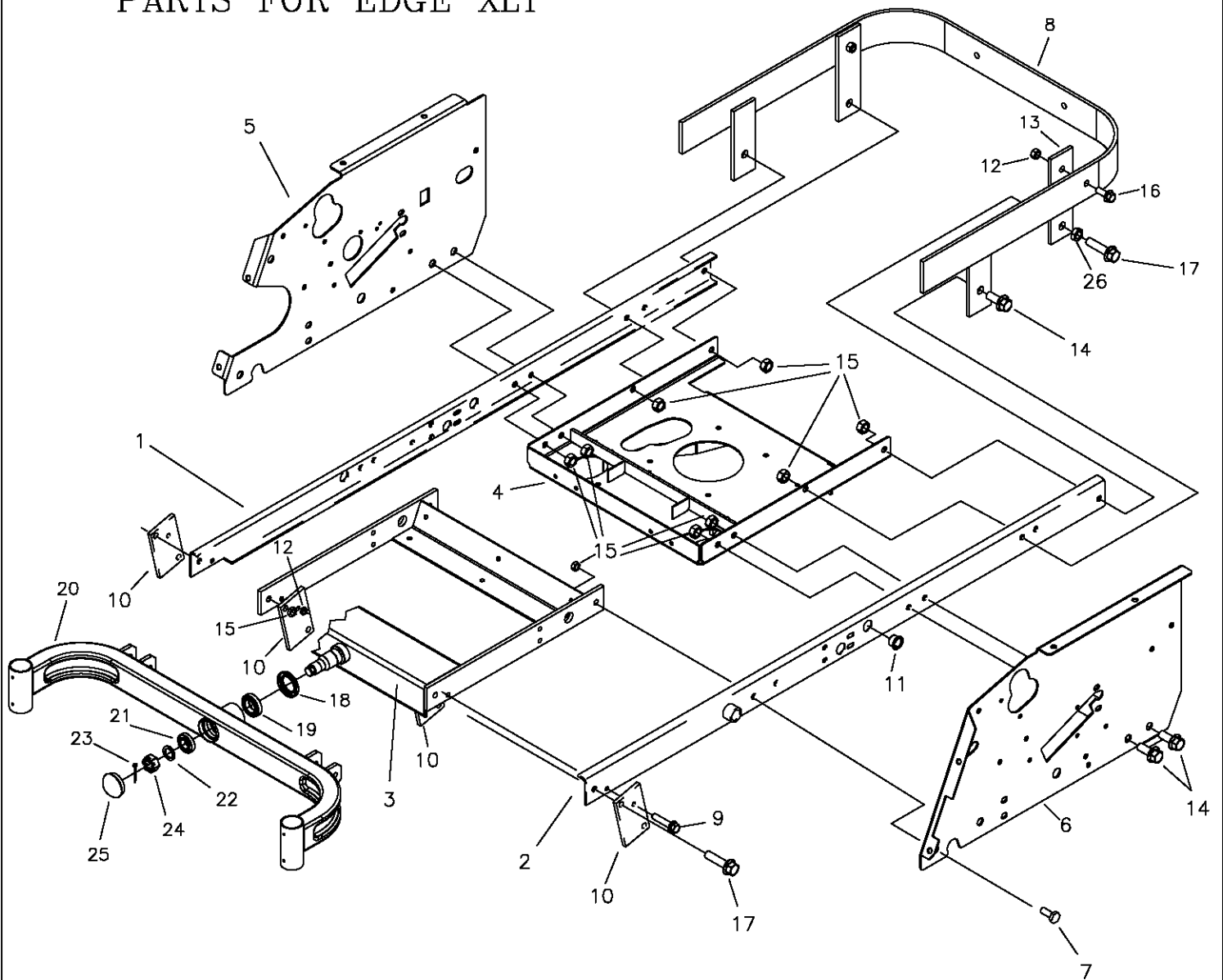
# FRAME SIDE & RELATED PARTS FOR EDGE



ITEM #	PART #	QTY	DESCRIPTION
1	659-021W	1	FRAME SIDE RH.
2	659-022W	1	FRAME SIDE LH.
3	659-351W	1	AXLE MOUNTING WELDMENT
4	700-107W	1	MOTOR MOUNT WELDMENT
5	700-083P	1	SIDE PANEL RH.
6	700-084P	1	SIDE PANEL LH.
7	F-1386	2	1/2-13 x 1-1/4" CAPSCREW
8	700-080W	1	WLDT, ENGINE GUARD
9	F-2126	2	FHCS, 3/8-16 x 2" GR.5
10	642-063P	4	DRAG BAR TAB
11	D-3730	2	BUSHING, 5/8 BORE
12	F-2151	4	NUT, 3/8-16, NYLOC FLANGED
13	700-078P	1	BAR, BUMPER BRACE
14	F-2127	6	FHCS, 1/2-13 X 1-1/4" GR.5
15	F-2152	12	NUT, 1/2-13 NYLOC FLANGED
16	F-2141	2	FHCS, 3/8-16 X 1" GR.5
17	F-2128	3	FHCS, 1/2-13 X 2", GR.5
18	F-1462	1	NUT, 1/2-13 JAM

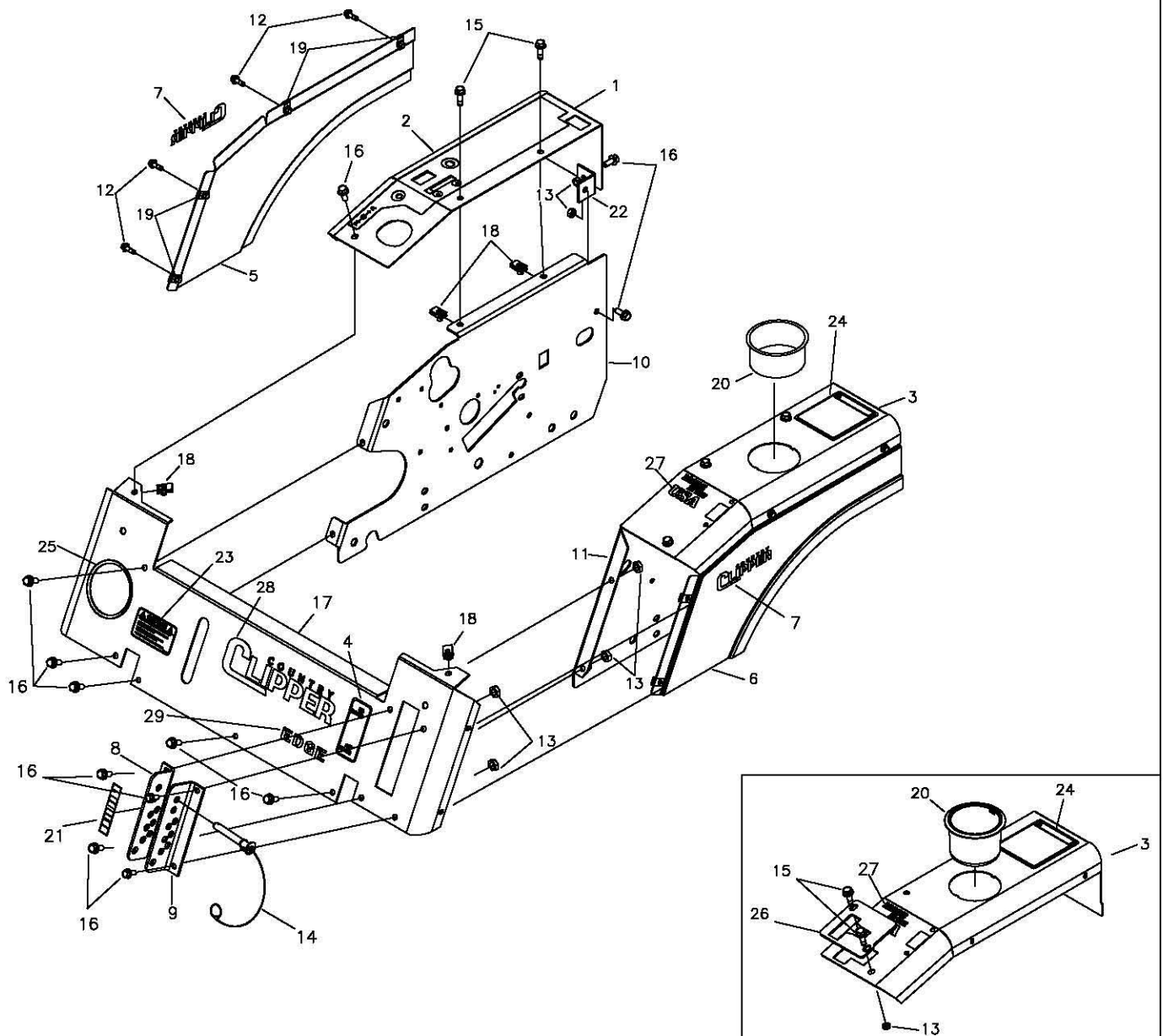


# FRAME SIDE & RELATED PARTS FOR EDGE XLT



ITEM #	PART #	QTY	DESCRIPTION	ITEM #	PART #	QTY	DESCRIPTION
1	659-021W	1	FRAME SIDE RH.	13	700-078P	1	BAR, BUMPER BRACE
2	659-022W	1	FRAME SIDE LH.	14	F-2127	6	FHCS, 1/2-13 X 1-1/4" GR.5
3	709-157W	1	AXLE MOUNTING WELDMENT	15	F-2152	12	NUT, 1/2-13, NYLOC FLANGED
4	700-107W	1	MOTOR MOUNT WELDMENT	16	F-2141	2	FHCS, 3/8-16 X 1" GR.5
5	700-083P	1	SIDE PANEL RH. (JS)	17	F-2128	3	FHCS, 1/2-13 X 2", GR.5
-	700-109P	1	SIDE PANEL RH. (TS)	18	H-2812	1	SEAL, SHAFT, 1.75, 2.375, 0.313
6	700-084P	1	SIDE PANEL RH. (JS)	19	D-3825	1	BRG, TAPERED, SET
-	700-110P	1	SIDE PANEL LH. (TS)	20	659-287W	1	FRONT AXLE WLDT.
7	F-1386	2	1/2-13 x 1-1/4" CAPSCREW	21	D-3826	1	BRG, TAPERED, SET
8	700-080W	1	WLDT, ENGINE GUARD	22	606-303P	1	1" WASHER
9	F-2126	2	FHCS, 3/8-16 x 2" GR.5	23	F-1728	1	3/16 X 2" COTTER PIN
10	642-063P	4	DRAG BAR TAB	24	F-1724	1	1-14 SLOTTED NUT
11	D-3730	2	BUSHING, 5/8 BORE (JS ONLY)	25	H-1924	1	GREASE CAP
12	F-2151	4	NUT, 3/8-16, NYLOC, FLANGED	26	F-1462	1	NUT, 1/2-13, JAM

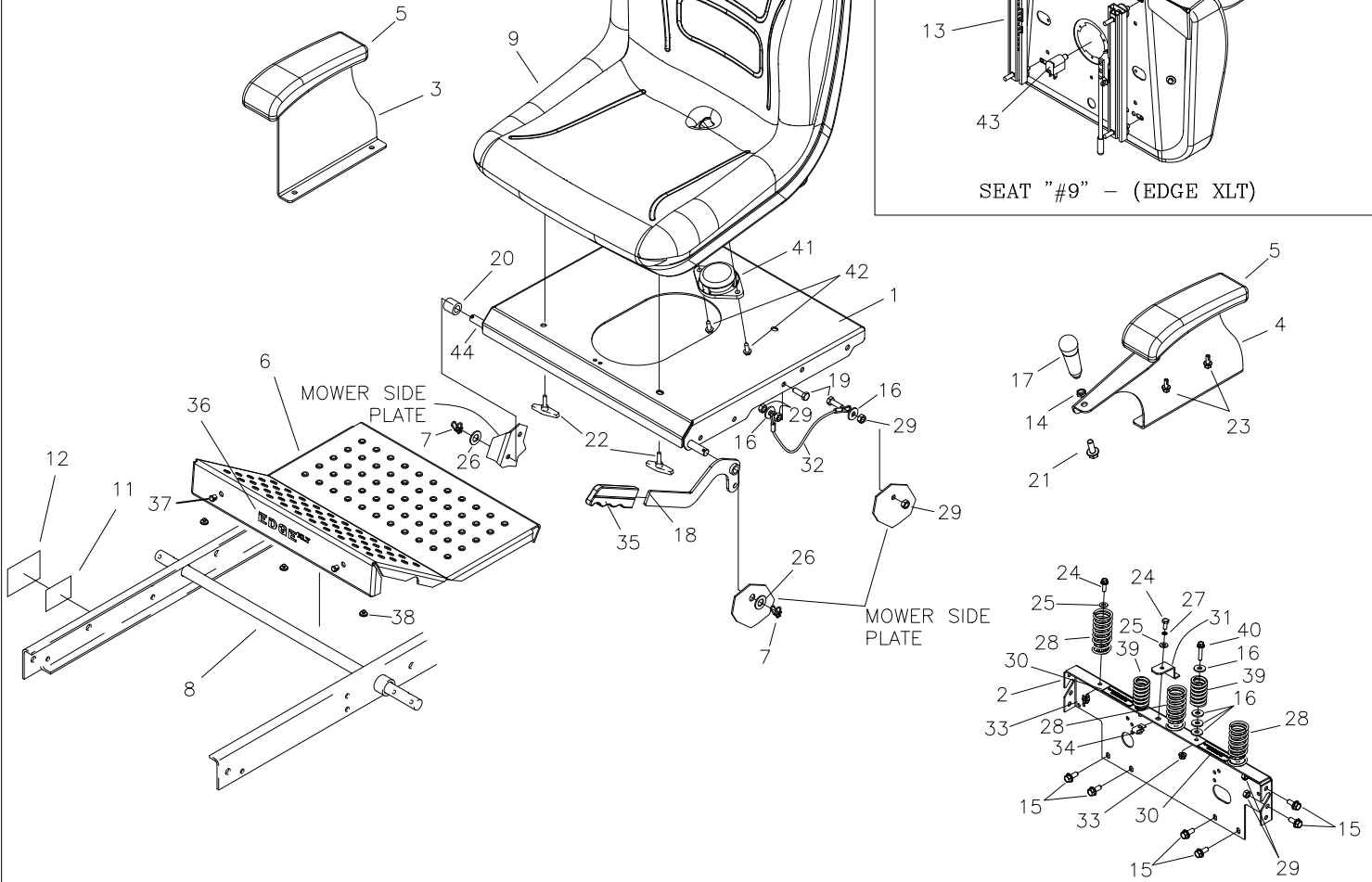
# FENDER ASSEMBLY



**TWINSTICK FENDER ASSY**

REF NO.	PART NO.	QTY.	DESCRIPTION	REF NO.	PART NO.	QTY.	DESCRIPTION
1	625-146A	1	FENDER CAP w/DECAL, EDGE/XLT, RH (JS)	15	F-2121	8	FHCS, 5/16-18x1" GR.5 w/PATCH
-	625-148A	1	FENDER CAP w/DECAL, EDGE XLT, RH (TS)	16	F-2120	15	FHCS, 5/16-18 X 3/4" GR.5
2	P-12925	1	DECAL, CONTROL PANEL	17	629-894A	1	FRONT PANEL w/DECAL, EDGE XLT
3	625-147A	1	FENDER CAP w/DECAL, EDGE/XLT, LH (JS)	-	629-889A	1	FRONT PANEL w/DECAL, EDGE
-	625-149A	1	FENDER CAP w/DECAL, EDGE XLT, LH (TS)	18	F-1860	6	5/16-18 "U"-NUT
4	P-11382	1	DECAL, PARK BRAKE	19	F-1858	8	1/4-20 "U"-NUT
5	707-101A	1	FENDER SKIRT w/DECAL, EDGE/XLT, RH	20	H-2228	1	CUP HOLDER
6	707-102A	1	FENDER SKIRT w/DECAL, EDGE/XLT, LH	21	P-12039	1	DECAL, "CUT HEIGHT"
7	P-12985	2	DECAL, NEW CC, SM, BLK	22	707-060P	2	BRACKET, FENDER
8	659-115A	1	LATCH PLATE RH W/DECAL	23	P-12557	1	DECAL, "CAUTION"
9	642-129P	1	LATCH PLATE LH.	24	P-11370	1	DECAL, WARNING
10	-----	1	SEE PAGE 13 & 14	25	H-1626	1	U CHANNEL TRIM
11	-----	1	SEE PAGE 13 & 14	26	659-262P	1	NEUTRAL PLATE
12	F-2119	8	FHCS, 1/4-20x3/4", GR.5 w/PATCH	27	P-13000	1	DECAL, "USA"
13	F-1125	15	5/16-18 LOCK NUT	28	P-12984	1	DECAL, NEW CC, LG, BLK
14	629-854A	1	LOCK PIN, DECK HEIGHT, ASS'Y	29	P-12941	1	DECAL, EDGE (EDGE ONLY)

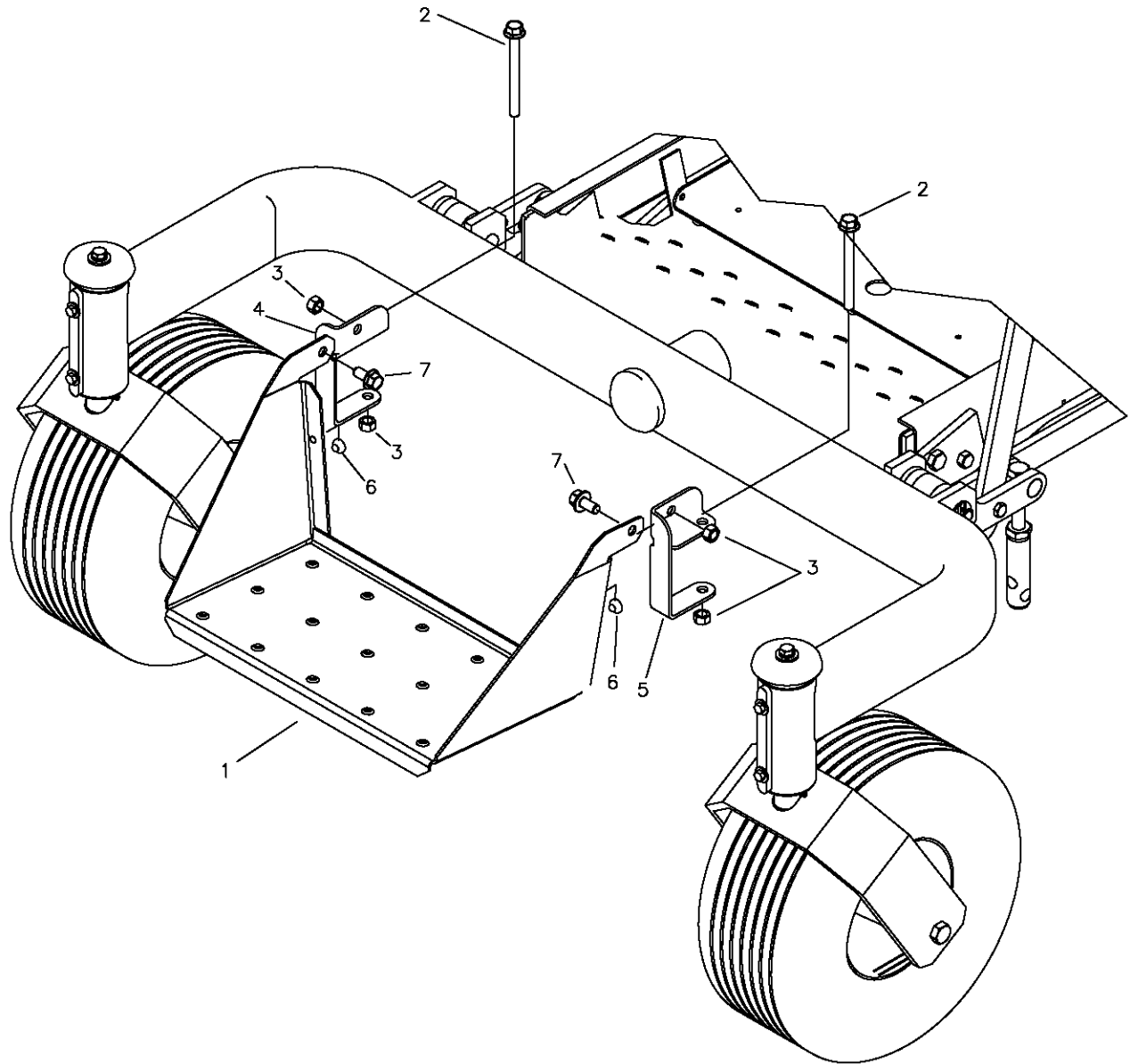
# SEAT, FOOTDECK & RELATED PARTS



SEAT "#9" - (EDGE XLT)

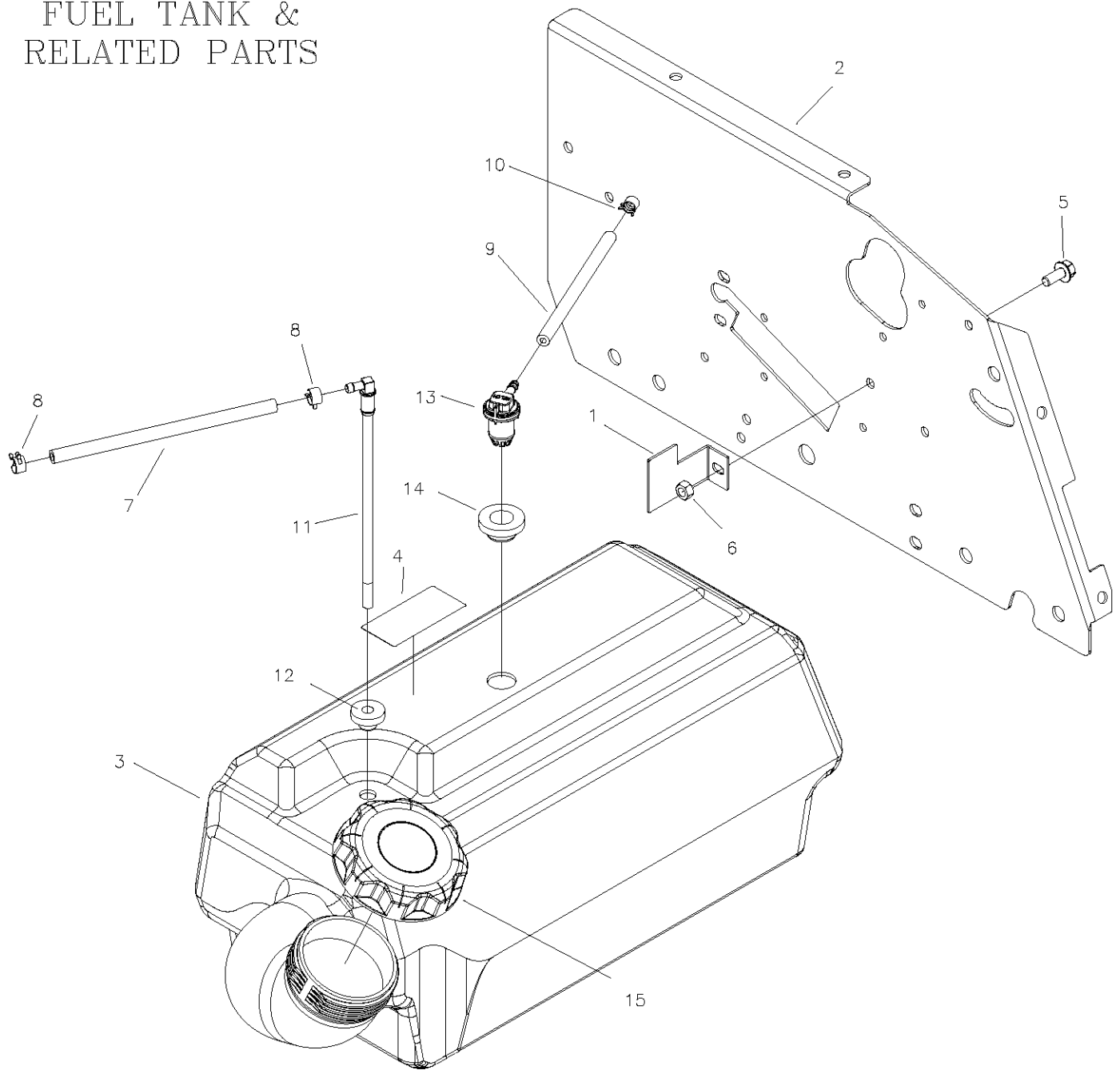
REF NO.	PART NO.	QTY.	DESCRIPTION	REF NO.	PART NO.	QTY.	DESCRIPTION
1	700-097P	1	PLATE, SEAT (EDGE)	22	659-073A	4	T-HANDLE ASSEMBLY (EDGE)
-	707-005P	1	PLATE, SEAT (EDGE XLT)	-	F-2063	4	3/8-16 NYLOC NUT, FLANGED (EDGE XLT)
2	707-039P	1	PLT, REAR SEAT FILLER	23	F-2134	6	HFCS 1/4-20x5/8" SELF TAPPING
3	700-153P	1	PLATE, ARM REST, RH	24	F-1538	4	1/4-20x3/4" CAPSCREW
4	700-152P	1	PLATE, ARM REST, LH, w/HANDLE	25	F-1009-01	4	1/4" FLAT WASHER
-	700-154P	1	PLATE, ARM REST, LH (TS)	26	F-1521	2	1/2" WASHER
5	H-2753	2	PAD, ARM REST	27	F-1019-01	1	1/4" LOCK WASHER
6	659-307P	1	FOOT DECK, EDGE	28	H-1920	3	SPRING, ASSIST
-	629-849A	1	FOOT DECK w/DECALS, EDGE XLT	29	F-1125	9	5/16-18 STOVER NUT
7	H-2239	1	1/2" RUE RING	30	P-11052	2	DECAL, TRANSMISSION OIL
8	620-051P	1	LIFT BAR	31	659-137P	1	BATTERY HOLD DOWN
9	H-2449	1	SEAT (EDGE)	32	H-2460	1	CABLE
-	H-2604	1	SEAT (EDGE XLT)	33	F-1005-01	1	1/4-20 STOVER NUT
11	P-13142	1	SERIAL TAG	34	F-1858	1	1/4-20 "U" NUT
12	P-12473	1	SERIAL TAG LAMINATION DECAL	35	H-1926	1	HANDLE, GRIP
13	H-2760	1	TRACK KIT	36	P-12974	1	DECAL, EDGE XLT
14	F-1486	1	3/8-16 JAM NUT	37	H-1280	2	CAP PLUG, PLASTIC (EDGE XLT)
15	F-2120	8	HFCS, 5/16-18x3/4" GR5	38	H-2461	3	RUBBER BUMPER
16	F-1009-02	11	5/16" FLAT WASHER	39	H-2636	2	SPRING
17	H-2764	1	HANDLE, JOYSTICK	40	F-2182	2	HFCS, 1/4-20x1-1/4" GR5
18	707-042W	1	BRAKE HANDLE	41	E-6374	1	SEAT SWITCH
19	F-1015-15	2	5/16-18 x 1" CAPSCREW	42	F-1785	2	SCREW, 14 X 3/4"
20	707-046P	1	SPACER, SEAT PAN	43	E-6491	1	PLUNGER, SEAT SWITCH
21	F-2141	1	HFCS, 5/16-18x1" GR5	44	700-091P	1	PIN, SEAT HINGE

# FRONT STEP ASSEMBLY (EDGE XLT ONLY)



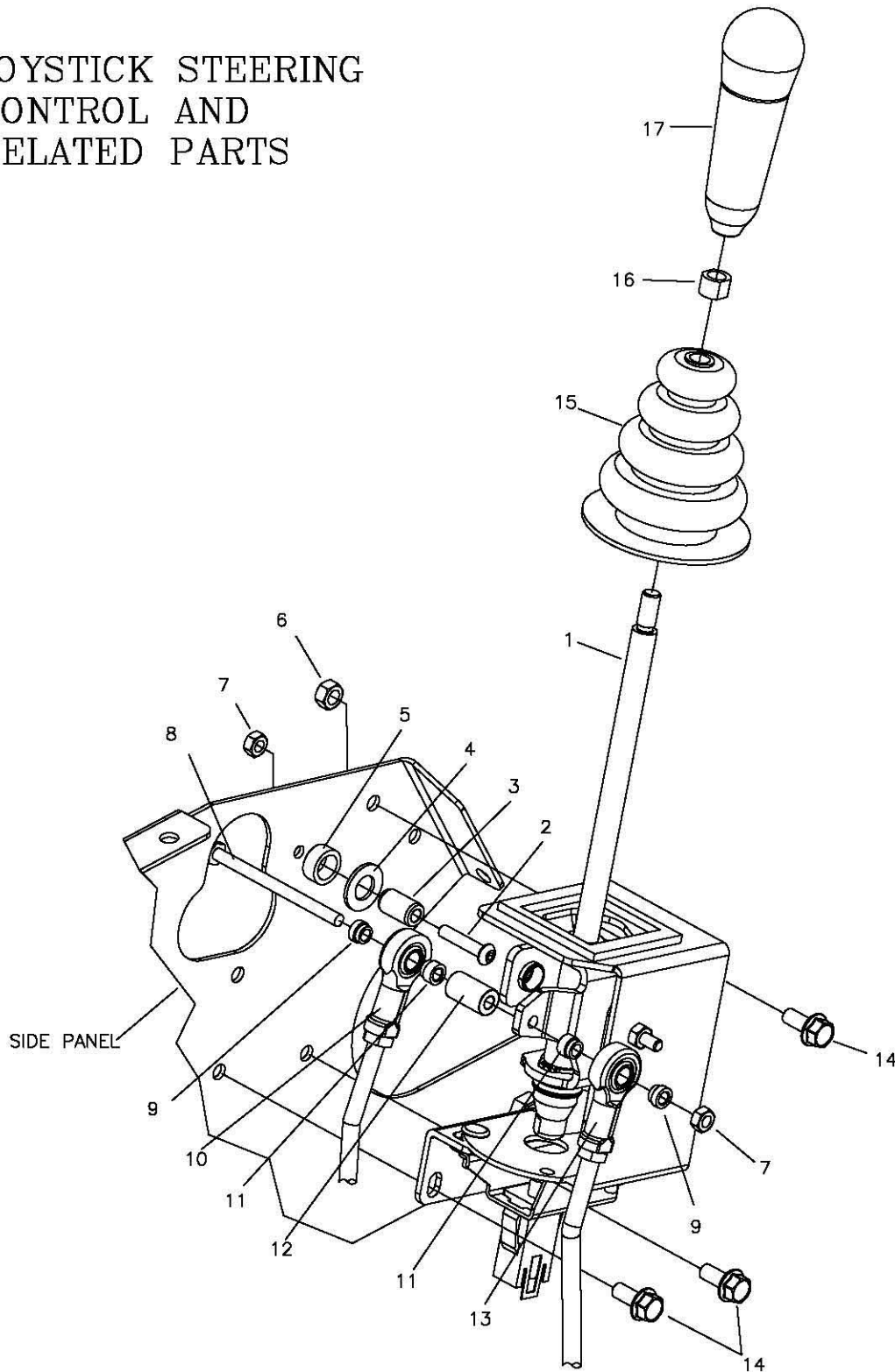
REF NO.	PART NO.	QTY.	DESCRIPTION
1	663-134P	1	FRONT STEP
2	F-2142	2	FHCS, 3/8-16 X 4" GR.5
3	F-1005-03	4	3/8-16 LOCK NUT
4	659-241P	1	BRACKET, STEP MOUNT, RH
5	659-242P	1	BRACKET, STEP MOUNT, LH
6	H-2461	2	RUBBER BUMPER BUTTON
7	F-2124	2	FHCS, 3/8-16 X 3/4" GR.5

# FUEL TANK & RELATED PARTS



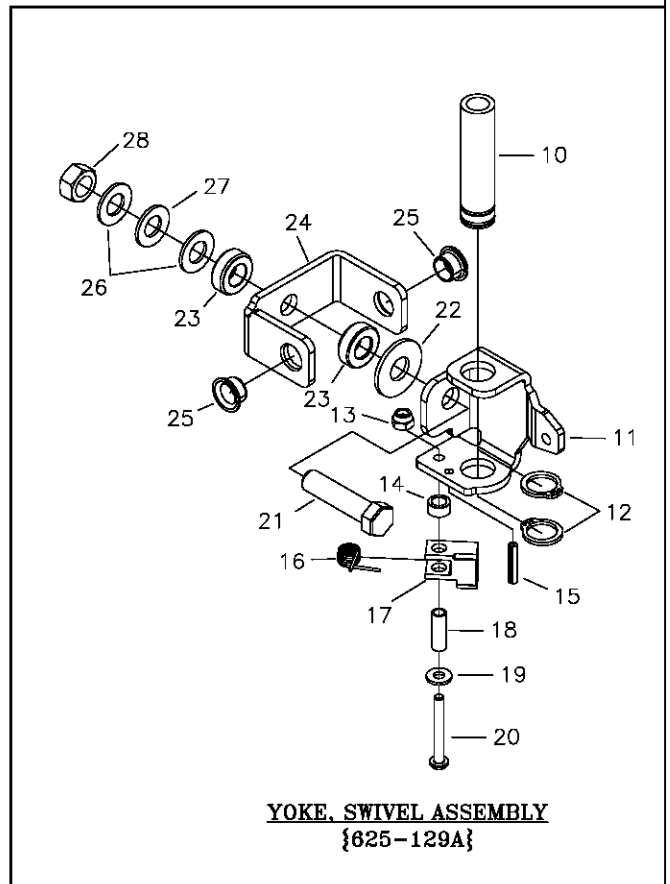
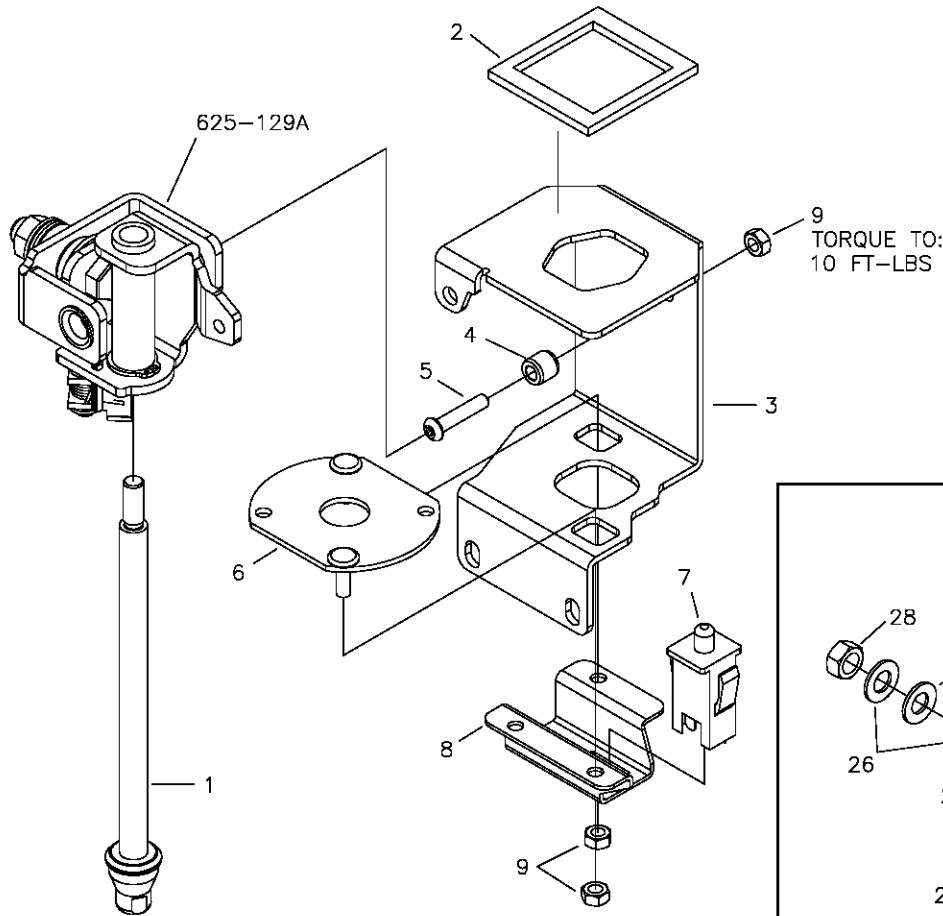
ITEM #	PART #	QTY	DESCRIPTION
1	700-108P	1	STRAP, FUEL TANK
2	-----	1	SEE PAGE 12 & 13
3	H-2724	1	FUEL TANK ASSEMBLY, SMALL
4	P-12922	1	CARB/EPA LABEL
5	F-2120	1	FHCS, 5/16-18x3/4", GR5
6	F-1125	1	5/16-18 Stover Nut
7	H-1648	4.0ft	Fuel Line
8	H-1687	2	1/2 O.D. Hose Spring Clamp
9	H-2697	4.0ft	VENT LINE
10	H-2698	1	HOSE CLAMP, .406 OD
11	H-2742	1	PICK UP TUBE
12	H-2741	1	GROMMET, PICK UP TUBE
13	H-2678	1	REMOTE VENT
14	H-2679	2	REMOTE VENT GROMMET
15	H-2743	1	GAS CAP

# JOYSTICK STEERING CONTROL AND RELATED PARTS



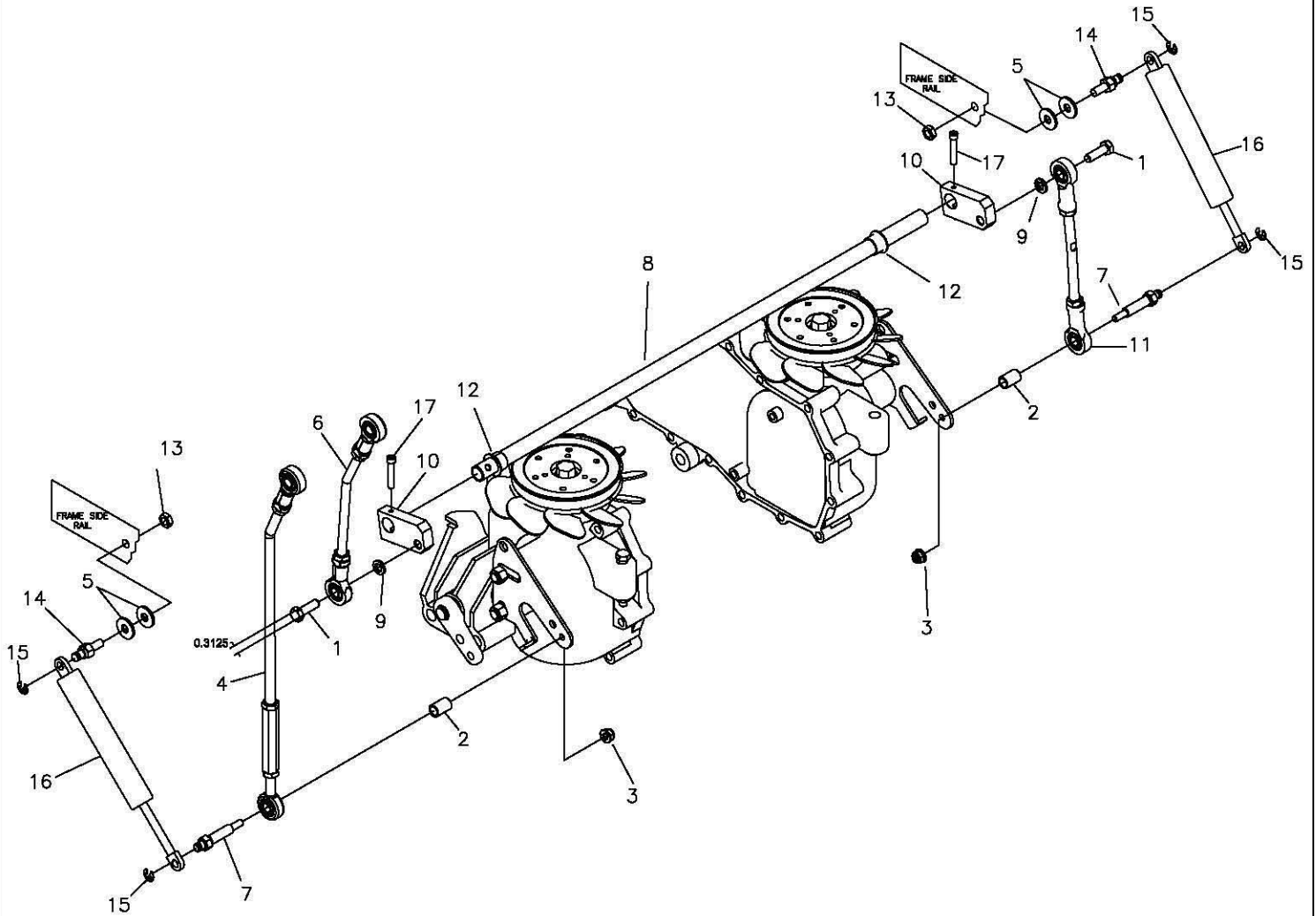
REF NO.	PART NO.	QTY.	DESCRIPTION	REF NO.	PART NO.	QTY.	DESCRIPTION
1	625-121A	1	JOYSTICK ASSEMBLY	10	707-082P	1	LINKAGE, INNER, JOYSTICK
2	F-2103	1	BUTTON SHCS, 1/4-20x1"	11	625-107P	1	BUSHING, .375 ROD END
3	625-119P	1	PIN, PIVOT, JS, LONG	12	625-100P	1	TUBE, PIVOT, JOYSTICK
4	F-1521	1	1/2" WASHER	13	707-083P	1	OUTER, LINKAGE, JOYSTICK
5	625-126P	1	SPACER, JOYSTICK PANEL	14	F-2120	3	FHCS, 5/16-18 x 3/4" GR5
6	F-1125	3	5/16-18 STOVER NUT	15	H-1991	1	BOOT
7	F-1005-01	1	1/4-20 LOCK NUT	16	H-2765	1	NUT, JOYSTICK
8	F-1020-01	1	1/4-20 x 3-1/2" CAPSCREW	17	H-2764	1	HANDLE, JOYSTICK
9	625-116P	1	BUSHING, .375 ROD END, SHORT				

# JOYSTICK ASSEMBLY 625-121A



ITEM	PART #	QTY.	DESCRIPTION	ITEM	PART #	QTY.	DESCRIPTION
1	625-130A	1	ROD ASSEMBLY, SHORT	15	F-1503	1	3/16 x 1" SPIRAL PIN
2	H-1947	1	GASKET, FOAM, JOYSTICK	16	H-2710	1	SPRING, DETENT, JOYSTICK
3	625-095P	1	HOUSING, JOYSTICK	17	625-103P	1	TAB, CAM DETENT
4	625-106P	1	PIN, PIVOT, JOYSTICK	18	625-124P	1	TUBE-SPACER, DETENT CAM
5	F-2103	1	BUTTON SHCS, 1/4-20 x 1", CZ	19	F-2136	1	WASHER, FLAT, #12 PLAIN
6	625-127W	1	NEUTRAL PLATE, WLDT	20	F-2135	1	SCR, PANHD, PHLPS, #12-24x1-3/4"
7	E-6474	1	SWITCH, SNAP MOUNT	21	F-1293	1	1/2-13 x 2" CAPSCREW
8	659-285P	1	MOUNT, SWITCH	22	F-1009-05	1	1/2" FLAT WASHER
9	F-1005-01	3	1/4-20 LOCK NUT	23	D-3857	2	THRUST BEARING
10	625-099P	1	TUBE, GUIDE, CONTROL ROD	24	625-097P	1	PIVOT, JOYSTICK (PART OF 625-128A)
11	625-096P	1	YOKE, SWIVEL, JOYSTICK	25	D-3784	2	BUSHING, FLANGED (PART OF 625-128A)
12	H-2705	2	RING, DETENT, .75 EXT.	26	F-1521	2	1/2" WASHER, CUSTOM
13	F-2137	1	NUT, #12-24, NYLOCK	27	H-2704	1	SPRING, BELLEVILLE, .50x1x.073
14	625-125P	1	SPACER, CAM DETENT	28	F-1005-05	1	1/2-13 STOVER NUT

# JOYSTICK STEERING CONTROL & RELATED PARTS (CON'T)

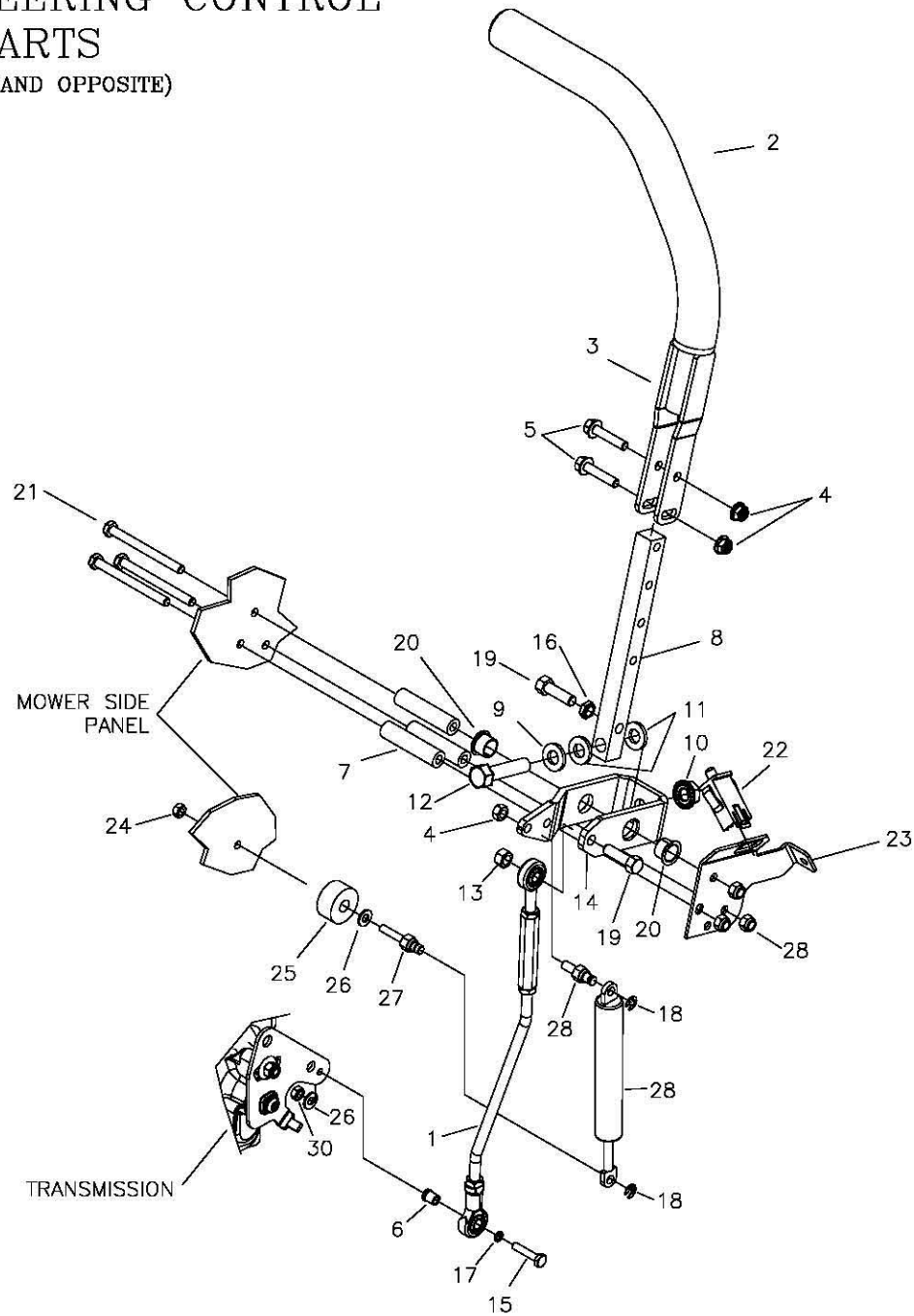


ITEM #	PART #	QTY	DESCRIPTION
1	F-2141	2	FHCS, 3/8-16x1" GR5
2	707-073P	2	STAND-OFF, LINKAGE MOUNT
3	F-2132	2	NUT, 1/4-20 NYLOC, FLANGED
4	707-083P	1	OUTER LINKAGE, JS
5	F-1009-02	4	5/16" FLAT WASHER
6	707-082P	1	INNER LINKAGE, JS
7	707-072P	2	STUD, LINKAGE MOUNT
8	700-150P	1	ROD, SHIFT CROSS
9	F-1019-03	2	3/8" LOCKWASHER
10	700-151P	2	SWIVEL ARM
11	H-2757	1	LINKAGE, JS
12	D-3730	2	BUSHING
13	F-1125	2	5/16-16 STOVER NUT
14	638-028P	2	DAMPER BOLT, 5/16-18 x 3/4
15	F-1610	4	E-RING FOR 1/4" SHAFT
16	H-2467	2	DUAL ACTION DAMPER
17	F-2206	2	SHCS, 12-24 X 1-1/4, ZINC



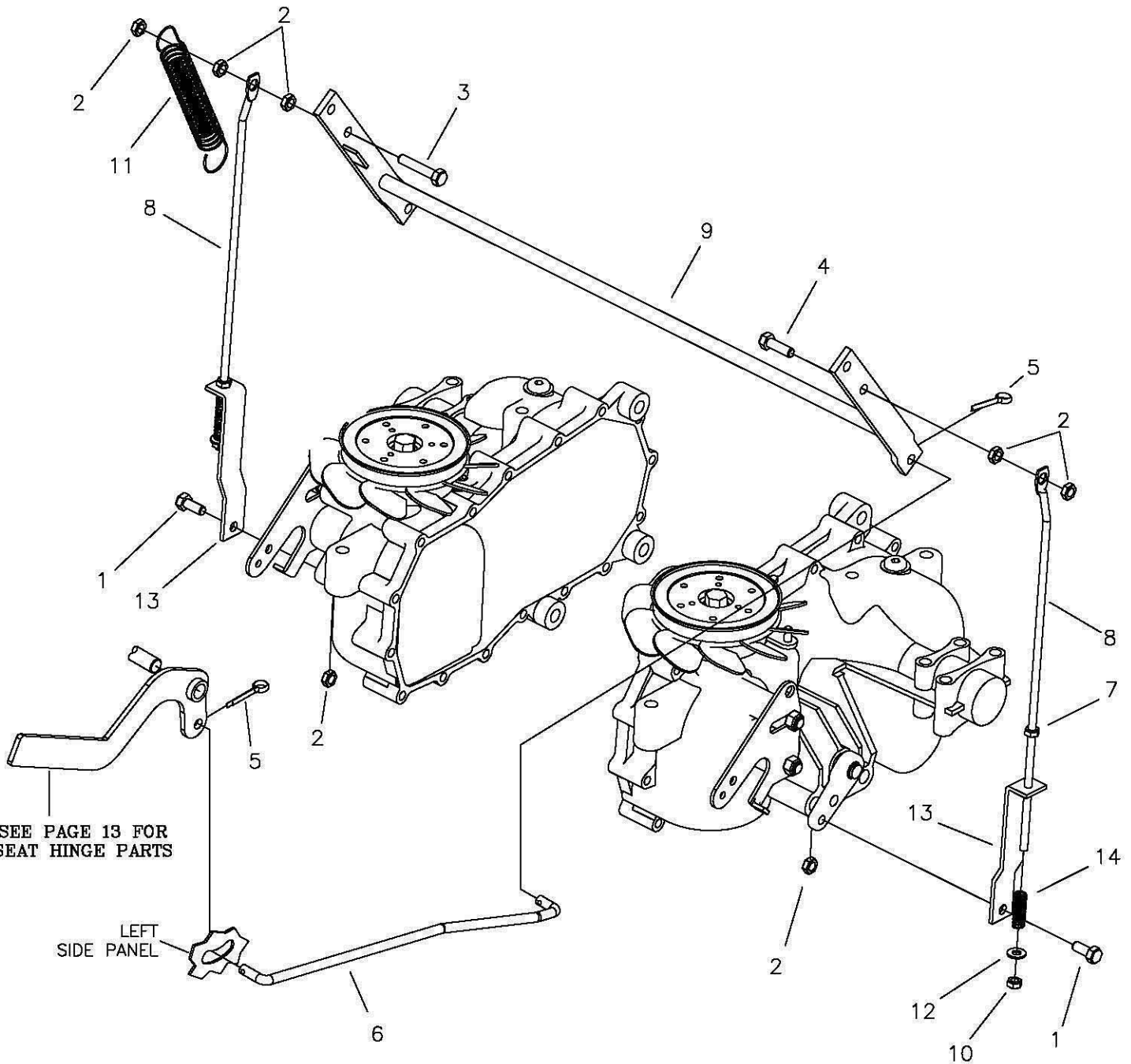
# TWINSTICK STEERING CONTROL & RELATED PARTS

(RIGHTHAND SHOWN, LEFTHAND OPPOSITE)



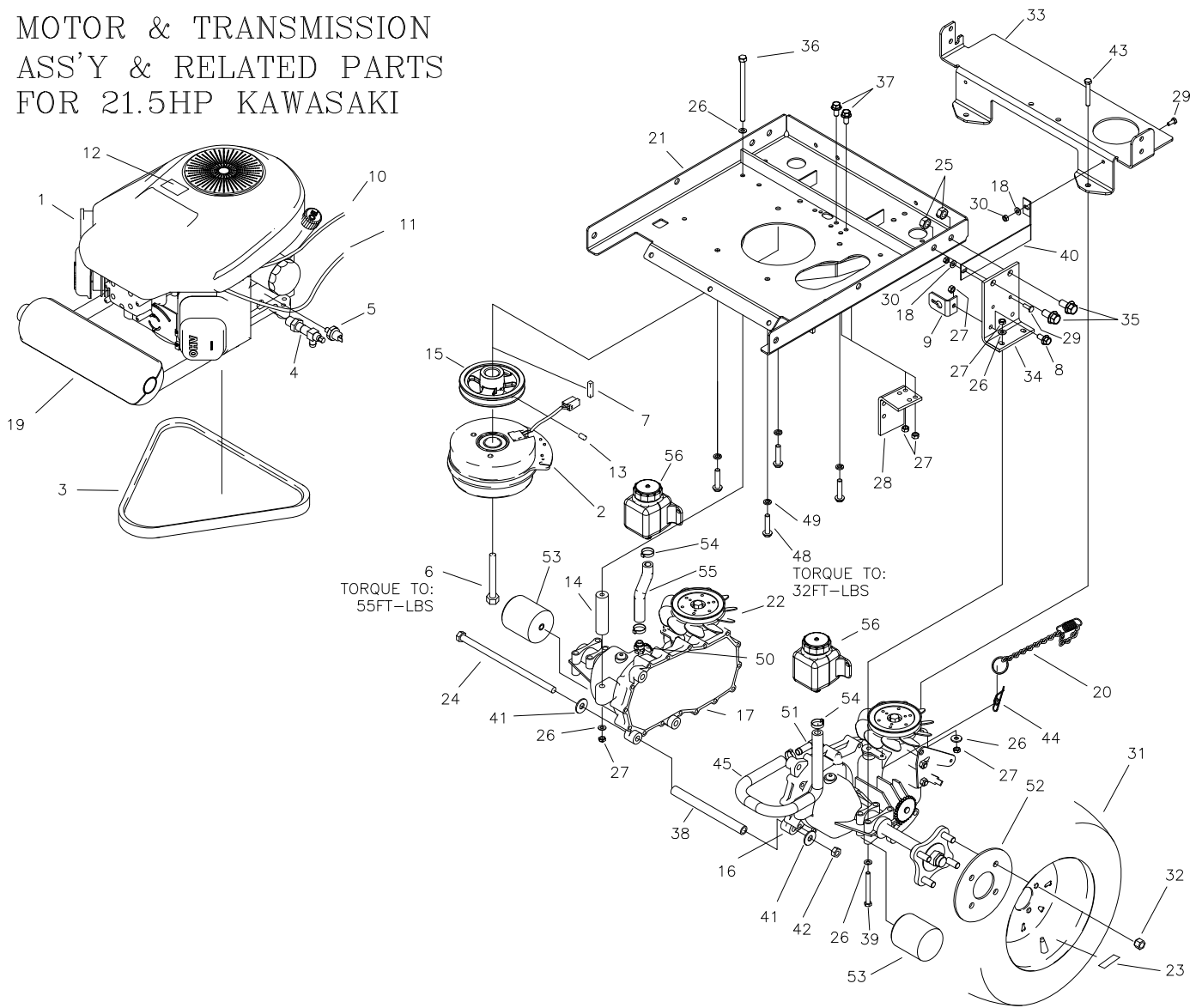
REF NO.	PART NO.	QTY.	DESCRIPTION	REF NO.	PART NO.	QTY.	DESCRIPTION
1	663-050P	1	LINK ROD ASSEMBLY	16	F-1486	1	3/8-16 JAM NUT
2	H-2739	1	GRIP, 15", CLOSED END	17	F-1019-01	4	1/4" LOCK WASHER
3	659-364W	1	DUAL LEVER CONTROL	18	F-1610	2	E-RING FOR 1/4" SHAFT
4	F-2063	8	NUT, 5/16-18, NYLOC FLANGED	19	F-1307	2	3/8-16 X 1 1/4" CAPSCREW
5	F-2129	2	FHCS, 5/16-18 X 1 1/2" w/PATCH	20	D-3730	2	FLANGED BUSHING 5/8" BORE
6	H-2465	1	ADAPTER, ROD END, LONG	21	F-2058	3	5/16-18 x 3 1/2" CAPSCREW
7	659-252P	3	TUBE SPACER	22	E-6474	1	SWITCH, SNAP MOUNT
8	659-365P	1	LOWER SHIFT BLOCK	23	647-242P	1	MOUNTING BRACKET (RH)
9	F-1521	1	WASHER	--	647-243P	1	MOUNTING BRACKET (LH)
10	F-2060	1	1/2-13 NUT, FLANGE LOCK	24	F-2132	1	NUT, 1/4-20, NYLOC FLANGED
11	606-151P	2	WASHER, NYLON 1/2 ID x 1/8"	25	F-2045	1	SPACER
12	F-1293	1	HHCS, 1/2-13 X 2", YZ GR5	26	F-1009-01	2	1/4" FLAT WASHER
13	F-2151	1	NUT, 3/8-16, NYLOC FLANGED	27	638-029P	1	DAMPER BOLT, 1/4-20
14	659-243P	1	SHIFTING YOKE	28	H-2843	1	DUAL ACTION DAMPNER, 750N
15	F-2182	1	FHCS, 1/4-20 X 1-1/4", YZ GR5	29	638-028P	1	DAMPER BOLT, 5/16-18 X 3/4"

# PARKING BRAKE ASSEMBLY & RELATED PARTS



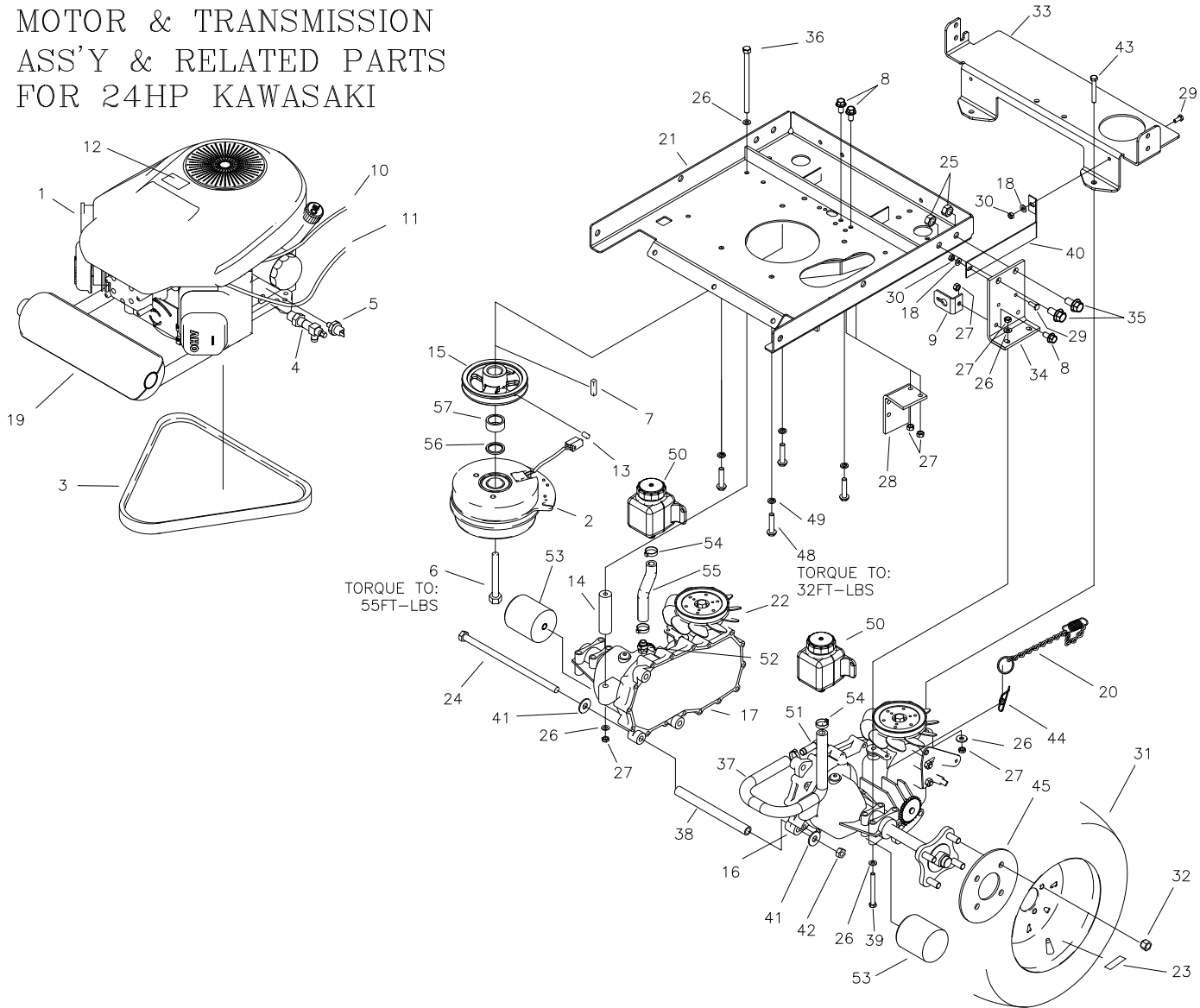
ITEM #	PART #	QTY	DESCRIPTION
1	F-1546	4	5/16-18 X 3/4" H.H.C.S.
2	F-1125	6	5/16" STOVER LOCK NUT
3	F-1015-17	1	5/16-18 X 1-1/2" H.H.C.S.
4	F-1015-15	1	5/16-18 X 1" H.H.C.S
5	F-1491	2	1" COTTER PIN
6	707-044P	1	LINK, PARK BRAKE
7	F-2132	2	NUT, 1/4-20, FLANGED NYLOC
8	H-2452	2	BRAKE LINK BAR, BENT
9	659-206W	1	BRAKE ROD WELDMENT
10	F-1748	2	1/4" NYLOC LOCK NUT
11	H-1635	1	EXTENSION SPRING 3/4 X 4"
12	F-1009-01	2	1/4" FLAT WASHER
13	659-159P	2	LOWER BRAKE LINK
14	H-1637	2	COMPRESSION SPRING

# MOTOR & TRANSMISSION ASS'Y & RELATED PARTS FOR 21.5HP KAWASAKI



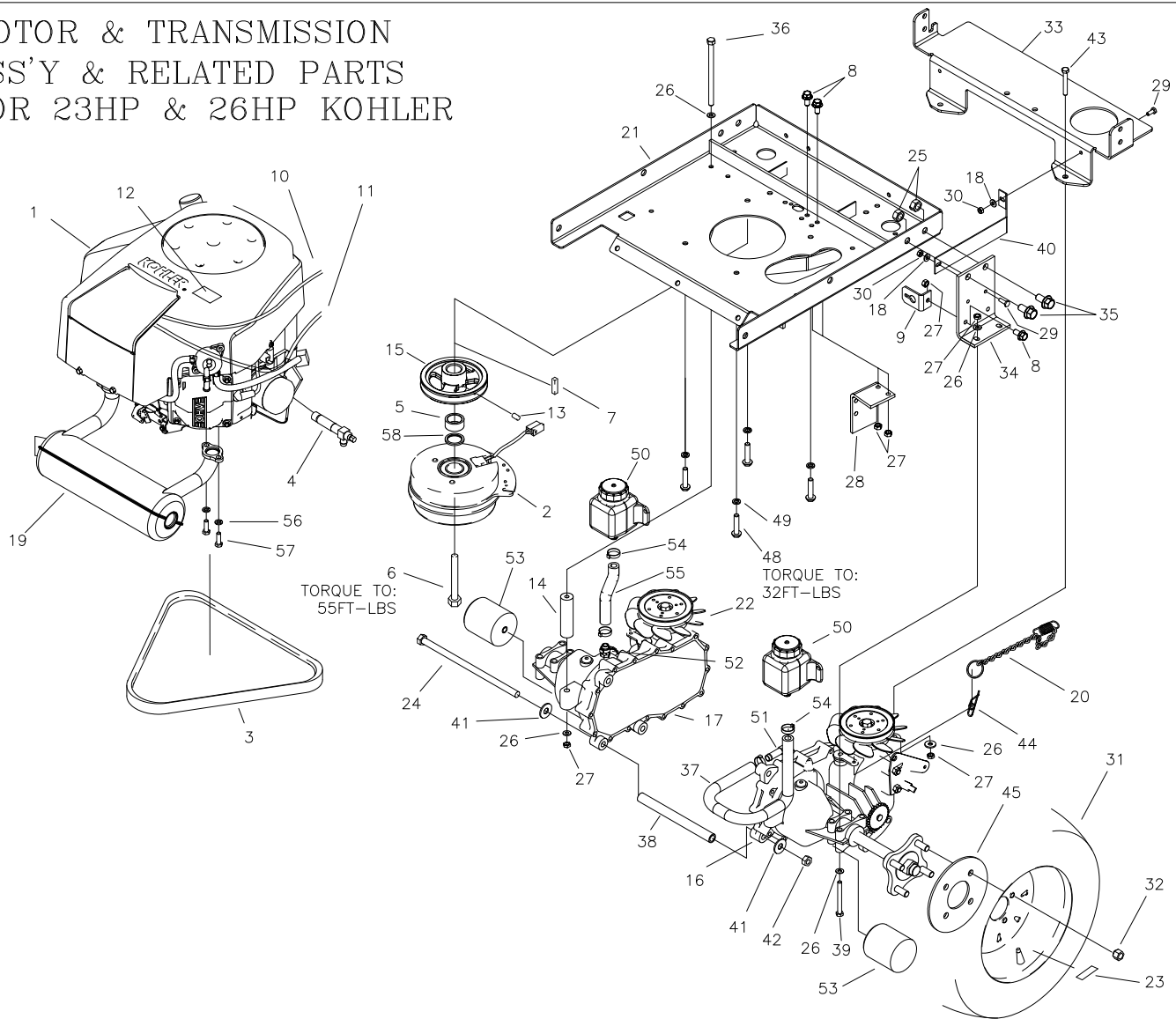
ITEM #	PART #	QTY	DESCRIPTION	ITEM #	PART #	QTY	DESCRIPTION
1	M-5393	1	ENGINE, KAW 21.5HP, FR651 TWIN	29	F-1015-02	4	1/4-20 X 5/8" GR. 5
2	E-6317	1	CLUTCH-BRAKE, 125ft/lb	30	F-1158	4	1/4-20 LOCK NUTS
3	D-3891	1	V-BELT, KEVLAR CORD, A-65	31	D-3353	2	TIRE, 20x10-10, TURF (48" DECK)
4	H-2590	1	OIL DRAIN VALVE	-	D-3787	2	TIRE, 20x12-10, TURF (52" DECK)
5	E-6307	1	OIL PRESSURE SWITCH	32	F-1499	8	LUG NUT, 1/2 X 20
6	F-2113	1	7/16-20x2-1/2" CAPSCREW, GR8	33	707-036P	1	BRACE, TRANSMISSION
7	621-113P	1	KEY, 1/4 SQ. X 1-1/4"	34	659-350P	2	HYDRO MOUNT BRACE
8	F-2124	2	FHCS, 5/16-18 X 3/4" BOLT GR5	35	F-2127	4	FHCS, 1/2-13 X 1-1/4" GR5
9	659-119P	1	FREE WHEEL ANCHOR	36	F-2145	2	5/16-18 X 6" BOLT GR8
10	H-2287	1	CHOKE CABLE	37	F-2120	1	FHCS, 1/2-13 X 1-1/4" GR5
11	H-2610	1	THROTTLE CABLE	38	659-173P	1	HYDRO BRACE
12	P-10077-11	1	DECAL, "CLEAN"	39	F-1544	4	5/16-18 X 3" BOLT
13	F-1228	1	SETSCREW, 1/4" X 1/4"	40	707-061P	2	FAN SHROUD
14	659-121P	2	REAR HYDRO BRACE	41	F-1009-03	2	3/8" FLAT WASHER
15	659-153P	1	MOTOR PULLEY	42	F-1005-03	1	3/8-16 LOCK NUT
16	D-3886-01	1	TRANSAXLE, RH, ZT-2800	43	F-1820	2	5/16-18 x 2-1/4" CAPSCREW
17	D-3886-02	1	TRANSAXLE, LH, ZT-2800	44	F-1492	2	5/16-3/8 RUE RING
18	F-1009-01	4	1/4" FLAT WASHER	45	H-2761	1	HOSE, 1/2" x 19"
19	H-2759	1	MUFFLER, KAWASAKI	48	F-1307	4	3/8-16 x 1-1/4" CAPSCREW
20	707-074P	2	FREEWHEEL CHAIN W/SPRING	49	F-1019-03	4	3/8" LOCK WASHER
21	707-009W	1	MOTOR MOUNT	50	H-2517	1	VENT TUBE ADAPTER
22	H-2539	2	FAN BLADE REPLACEMENT	51	H-2762	1	VENT TUBE ADAPTER
23	P-11384	2	DECAL, TIRE PRESSURE, 12 PSI	52	659-092P	2	WHEEL BACKING PLATE
24	F-2007	1	3/8-16 X 12-1/2" HEX BOLT	53	H-2567	2	TRANSAXLE OIL FILTER
25	F-1005-05	4	1/2-13 STOVER NUT	54	H-2535	4	HOSE CLAMP
26	F-1009-02	14	5/16" FLAT WASHER	55	H-2549	1	HOSE 5" LONG
27	F-1125	8	5/16-18 LOCK NUT	56	D-3791	2	SMALL HYDRO TANK
28	707-033P	1	CLUTCH STOP				

# MOTOR & TRANSMISSION ASS'Y & RELATED PARTS FOR 24HP KAWASAKI



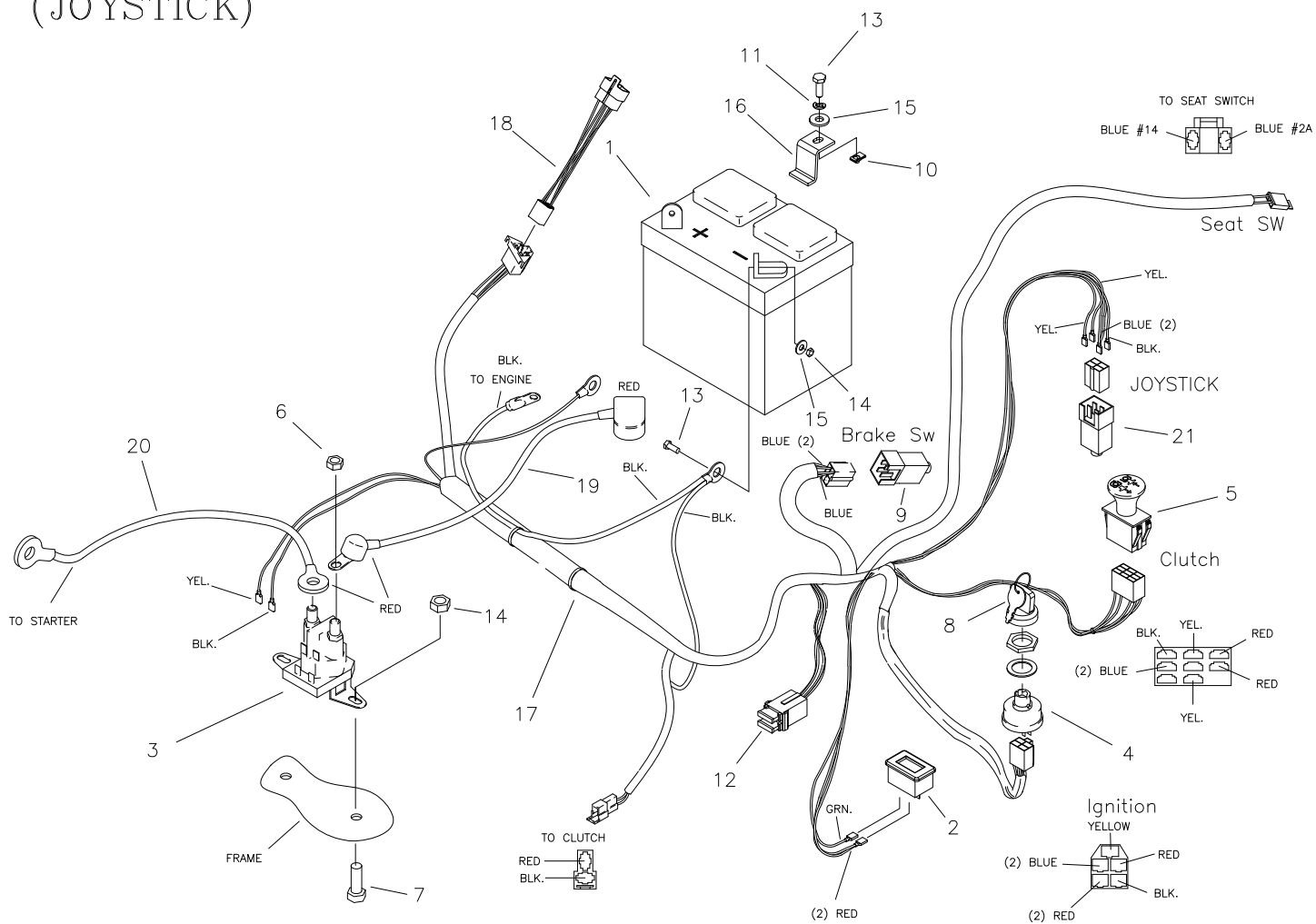
ITEM #	PART #	QTY	DESCRIPTION	ITEM #	PART #	QTY	DESCRIPTION
1	M-5394	1	ENGINE, KAW 24HP, FR730 TWIN	29	F-1015-02	4	1/4-20 X 5/8" GR. 5
2	E-6247	1	CLUTCH-BRAKE, 175ft/lb	30	F-1158	4	1/4-20 LOCK NUTS
3	D-3891	1	V-BELT, KEVLAR CORD, A-65	31	D-3787	2	TIRE, 20x12-10, TURF
4	H-2590	1	OIL DRAIN VALVE	32	F-1499	8	LUG NUT, 1/2 X 20
5	E-6307	1	OIL PRESSURE SWITCH	33	707-036P	1	BRACE, TRANSMISSION
6	F-2113	1	7/16-20x2-1/2" CAPSCREW, GR8	34	659-350P	2	HYDRO MOUNT BRACE
7	621-113P	1	KEY, 1/4 SQ. X 1-1/4"	35	F-2127	4	FHCS, 1/2-13 X 1-1/4" GR5
8	F-2120	4	FHCS, 5/16-18 X 3/4" BOLT GR5	36	F-2145	2	5/16-18 X 6" BOLT GR8
9	659-119P	2	FREE WHEEL ANCHOR	37	H-2761	1	HOSE, 1/2" x 19"
10	H-2287	1	CHOKE CABLE	38	659-173P	1	HYDRO BRACE
11	H-2610	1	THROTTLE CABLE	39	F-1544	4	5/16-18 X 3" BOLT
12	P-10077-11	1	DECAL, "CLEAN"	40	707-061P	2	FAN SHROUD
13	F-1228	1	SETSCREW, 1/4" X 1/4"	41	F-1009-03	2	3/8" FLAT WASHER
14	659-121P	2	REAR HYDRO BRACE	42	F-1005-03	1	3/8-16 LOCK NUT
15	659-154P	1	MOTOR PULLEY	43	F-1820	2	5/16-18 x 2-1/4" CAPSCREW
16	D-3886-01	1	TRANSAXLE, RH, ZT-2800	44	F-1492	2	5/16-3/8 RUE RING
17	D-3886-02	1	TRANSAXLE, LH, ZT-2800	45	659-092P	2	WHEEL BACKING PLATE
18	F-1009-01	4	1/4" FLAT WASHER	48	F-1307	4	3/8-16 x 1-1/4" CAPSCREW
19	H-2750	1	MUFFLER, KAWASAKI	49	F-1019-03	4	3/8" LOCK WASHER
20	707-074P	2	FREEWHEEL CHAIN W/SPRING	50	D-3791	2	SMALL HYDRO TANK
21	700-107W	1	MOTOR MOUNT	51	H-2762	1	VENT TUBE ADAPTER
22	H-2539	2	FAN BLADE REPLACEMENT	52	H-2517	1	VENT TUBE ADAPTER
23	P-11384	2	DECAL, TIRE PRESSURE, 12 PSI	53	H-2567	2	TRANSAXLE OIL FILTER
24	F-2007	1	3/8-16 X 12-1/2" HEX BOLT	54	H-2535	4	HOSE CLAMP
25	F-1005-05	4	1/2-13 STOVER NUT	55	H-2549	1	HOSE 5" LONG
26	F-1009-02	14	5/16" FLAT WASHER	56	611-143P	1	SPACER
27	F-1125	8	5/16-18 LOCK NUT	57	F-2043	1	SPACER, ENGINE PULLEY
28	700-026P	1	CLUTCH STOP				

MOTOR & TRANSMISSION  
ASS'Y & RELATED PARTS  
FOR 23HP & 26HP KOHLER



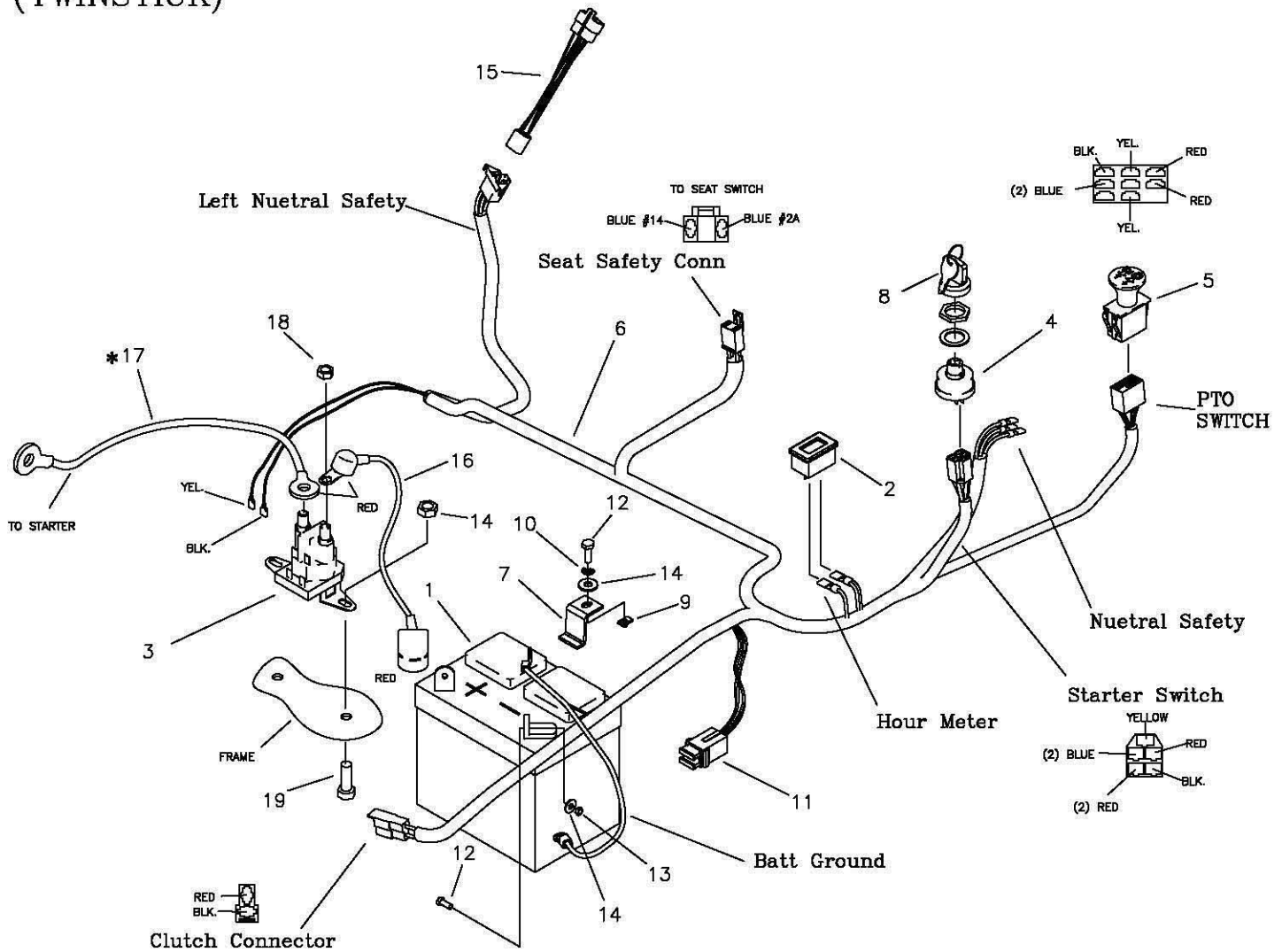
ITEM #	PART #	QTY	DESCRIPTION	ITEM #	PART #	QTY	DESCRIPTION
1	M-5403	1	ENGINE, KOHLER, 23HP KT730	28	700-026P	1	CLUTCH STOP
-	M-5399	1	ENGINE, KOHLER, 26HP KT745	29	F-1015-02	4	1/4-20 X 5/8" GR. 5
2	E-6317	1	CLUTCH-BRAKE, 125ft/lb (23HP)	30	F-1158	4	1/4-20 LOCK NUTS
-	E-6247	1	CLUTCH-BRAKE, 175ft/lb (26HP)	31	D-3787	2	TIRE, 20x12-10, TURF
3	D-3891	1	V-BELT, KEVLAR CORD, A-65	32	F-1499	8	LUG NUT, 1/2 X 20
4	H-2589	1	OIL DRAIN VALVE	33	707-036P	1	BRACE, TRANSMISSION
5	F-2043	1	SPACER	34	659-350P	2	HYDRO MOUNT BRACE
6	F-2113	1	7/16-20x2-1/2" CAPSCREW, GR8	35	F-2127	4	FHCS, 1/2-13 X 1-1/4" GR5
7	621-113P	1	KEY, 1/4 SQ. X 1-1/4"	36	F-2145	2	5/16-18 X 6" BOLT GR8
8	F-2120	4	FHCS, 5/16-18 X 3/4" BOLT GR5	37	H-2761	1	HOSE, 1/2" x 19"
9	659-119P	2	FREE WHEEL ANCHOR	38	659-173P	1	HYDRO BRACE
10	H-2404	1	CHOKE CABLE	39	F-1544	4	5/16-18 X 3" BOLT
11	H-2610	1	THROTTLE CABLE	40	707-061P	2	FAN SHROUD
12	P-10077-11	1	DECAL, "CLEAN"	41	F-1009-03	2	3/8" FLAT WASHER
13	F-1228	1	SETSCREW, 1/4" X 1/4"	42	F-1005-03	1	3/8-16 LOCK NUT
14	659-121P	2	REAR HYDRO BRACE	43	F-1820	2	5/16-18 x 2-1/4" CAPSCREW
15	659-153P	1	MOTOR PULLEY (23HP)	44	F-1492	2	5/16-3/8 RUE RING
-	659-154P	1	MOTOR PULLEY (26HP)	45	659-092P	2	WHEEL BACKING PLATE
16	D-3886-01	1	TRANSAXLE, RH, ZT-2800	48	F-2040	4	FFCS, 3/8-16X1-1/2", THRD FORM
17	D-3886-02	1	TRANSAXLE, LH, ZT-2800	49	F-1019-03	4	3/8" LOCK WASHER
18	F-1009-01	4	1/4" FLAT WASHER	50	D-3791	2	SMALL HYDRO TANK
19	H-2751	1	MUFFLER, KOH TWIN, LOW MOUNT	51	H-2762	1	VENT TUBE ADAPTER
20	707-074P	2	FREEWHEEL CHAIN W/SPRING	52	H-2517	1	VENT TUBE ADAPTER
21	700-107W	1	MOTOR MOUNT	53	H-2567	2	TRANSAXLE OIL FILTER
22	H-2539	2	FAN BLADE REPLACEMENT	54	H-2535	4	HOSE CLAMP
23	P-11384	2	DECAL, TIRE PRESSURE, 12 PSI	55	H-2549	1	HOSE 5" LONG
24	F-2007	1	3/8-16 X 12-1/2" HEX BOLT	56	F-1019-02	4	5/16" LOCK WASHER
25	F-1005-05	4	1/2-13 STOVER NUT	57	F-1015-15	4	5/16-18 X 1" CAPSCREW
26	F-1009-02	14	5/16" FLAT WASHER	57	611-143P	1	SPACER
27	F-1125	8	5/16-18 LOCK NUT				

# E-6415 WIRE HARNESS & RELATED PARTS (JOYSTICK)



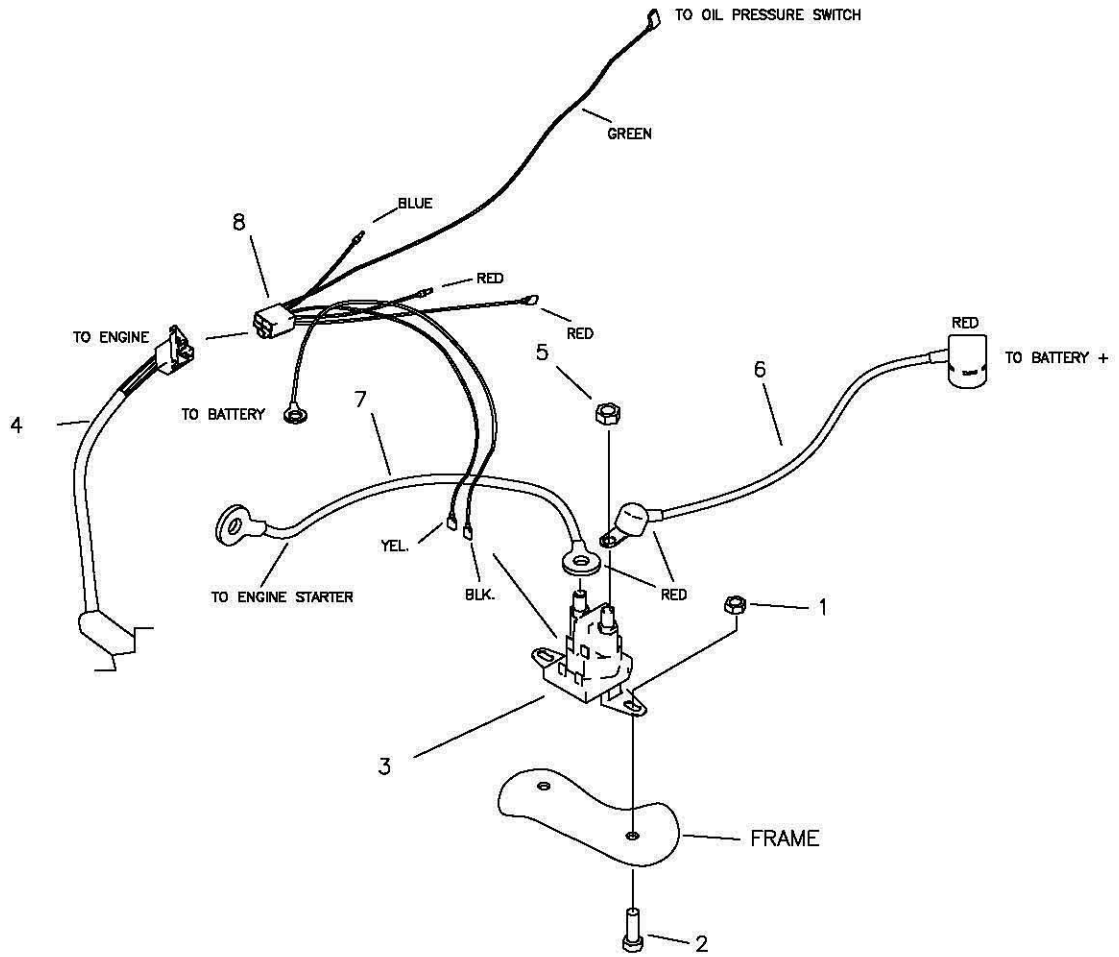
ITEM #	PART #	QTY	DESCRIPTION
1	E-6271	1	BATTERY
2	E-5878	1	HOUR METER
3	E-6054	1	SOLENOID
4	E-5873	1	START SWITCH
5	E-6403	1	CLUTCH SWITCH
6	F-1011-01	2	1/4-20 NUT
7	F-1015-02	2	1/4-20 x 5/8" CAPSCREW
8	E-6445	1	KEY, SET
9	E-6297	1	BRAKE SWITCH
10	F-1858	1	1/4-20 U-NUT
11	F-1019-01	1	1/4" LOCK WASHER
12	E-6207	2	FUSE, #ATC-30
13	F-1538	3	1/4-20 x 3/4" CAPSCREW
14	F-1158	5	1/4-20 STOVER NUT
15	F-1009-01	5	1/4" FLAT WASHER
16	659-137P	1	BATTERY HOLD DOWN
17	E-6415	1	WIRE HARNESS
18	E-6417	1	WIRE HARNESS ADAPTER (KAWASAKI)
-	E-6436	1	WIRE HARNESS ADAPTER (KOHLER)
19	E-6418	1	CABLE, BATTERY TO SOLENOID
20	E-6419	1	CABLE, SOLENOID TO ENGINE
21	E-6474	1	JOYSTICK SWITCH
-NOT SHOWN-			
	E-6374	1	SEAT SWITCH

# E-6416 WIRE HARNESS & RELATED PARTS (TWINSTICK)



ITEM #	PART #	QTY	DESCRIPTION
1	E-6271	1	BATTERY
2	E-5878	1	HOUR METER
3	E-6054	1	SOLENOID
4	E-5873	1	START SWITCH
5	E-6403	1	CLUTCH SWITCH
6	E-6416	1	WIRE HARNESS
7	659-137P	1	BATTERY HOLD DOWN
8	E-6445	1	KEY, SET
9	F-1858	1	1/4-20 U-NUT
10	F-1019-01	1	1/4" LOCK WASHER
11	E-6207	2	FUSE, #ATC-30
12	F-1538	3	1/4-20 x 3/4" CAPSCREW
13	F-1158	2	1/4-20 STOVER NUT
14	F-1009-01	3	1/4" FLAT WASHER
15	E-6417	1	WIRE HARNESS ADAPTER (KAWASAKI)
-	E-6436	1	WIRE HARNESS ADAPTER (KOHLER)
16	E-6418	1	CABLE, BATTERY TO SOLENOID
17	E-6419	1	CABLE, SOLENOID TO ENGINE
18	F-1011-01	2	1/4-20 NUT
19	F-1015-02	2	1/4-20 x 5/8" CAPSCREW
-NOT SHOWN-			
	E-6374	1	SEAT SWITCH

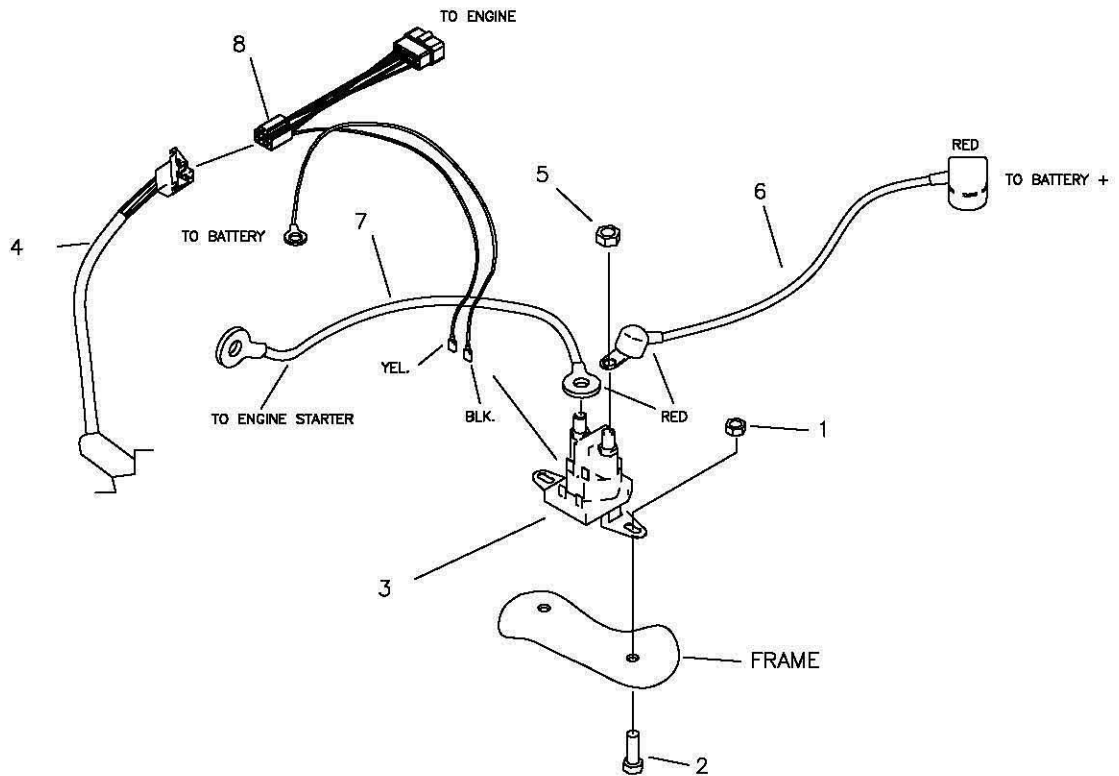
# WIRE HARNESS ADAPTER & RELATED PARTS FOR 21.5HP & 24HP KAWASAKI



ITEM #	PART #	QTY	DESCRIPTION
1	F-1158	2	1/4-20 STOVER NUT
2	F-1015-02	2	1/4-20 x 5/8" CAPSCREW
3	E-6054	1	SOLENOID
4	E-6415	1	WIRE HARNESS (JOYSTICK)
-	E-6416	1	WIRE HARNESS (TWINSTICK)
5	F-1011-01	2	1/4-20 NUT
6	E-6418	1	CABLE, BATTERY TO SOLENOID
7	E-6419	1	CABLE, SOLENOID TO ENGINE
8	E-6417	1	KAWASAKI HARNESS ADAPTER



# WIRE HARNESS ADAPTER & RELATED PARTS FOR KOHLER



ITEM #	PART #	QTY	DESCRIPTION
1	F-1158	2	NUT, FLANGED, 1/4-20, W/NYLOC, GR5
2	F-2162	2	FHCS, 1/4-20 x 3/4", YZ, GR5
3	E-6054	1	SOLENOID
4	E-6415	1	WIRE HARNESS (JOYSTICK)
-	E-6416	1	WIRE HARNESS (TWINSTICK)
5	F-1011-01	2	1/4-20 NUT
6	E-6418	1	CABLE, BATTERY TO SOLENOID
7	E-6419	1	CABLE, SOLENOID TO ENGINE
8	E-6436	1	KOHLER HARNESS ADAPTER





# Repair Parts Manual



**EDGE**™

410

**EDGE<sup>XLT</sup>**™

455

**Country Clipper Division**  
Shivers Manufacturing Inc.  
613 W. English St.  
Corydon, IA 50060-0467  
Ph. 641-872-2544  
Fax. 641-872-1593