

Repair Parts Manual

C O U N T R Y
CLIPPER®
Z E R O T U R N M O W E R

WRANGLER

140

COUNTRY CLIPPER
WRANGLER - 140

ZERO TURN MOWER

TABLE OF CONTENTS

- 1 41" MOWER DECK
- 2 48" MOWER DECK
- 3 52" MOWER DECK
- 4 SPINDLE ASSEMBLY
- 5 IDLER ASSEMBLIES
- 6 DECK LIFT ASSEMBLY

- 7 FRONT END ASSEMBLY
- 8 FRAME ASSEMBLY
- 9 FENDER ASSEMBLY

- 10 SEAT ASSEMBLY

- 11 FUEL TANK ASSEMBLY

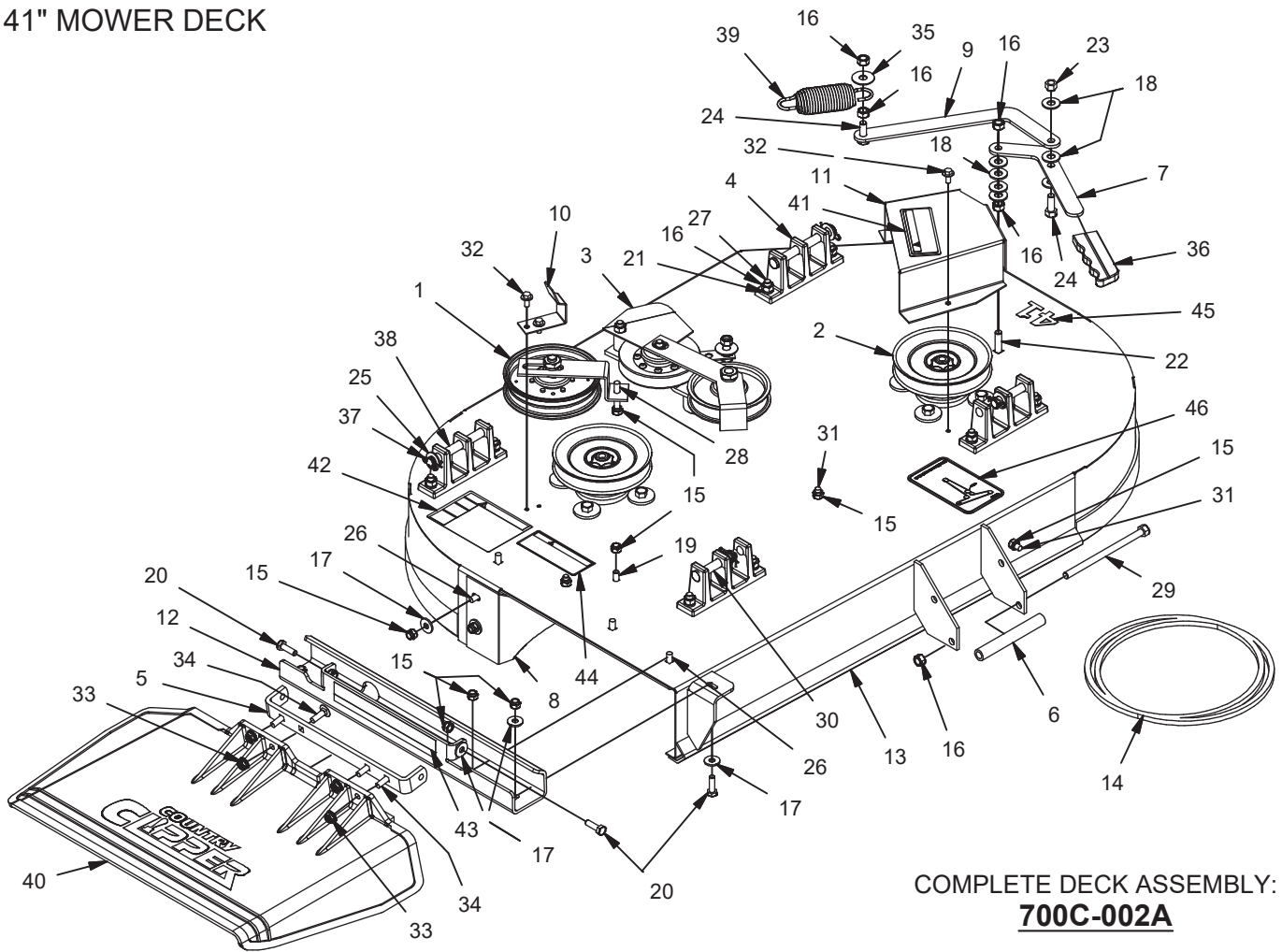
- 12 JOYSTICK ASSEMBLY
- 13 JOYSTICK STEERING ASSEMBLY
- 14 BRAKE ASSEMBLY

- 15 MOTOR MOUNT ASSEMBLY
- 16 MOTORS AND TRANSAXLE
- 17 MOTOR AND TRANSAXLE ASSEMBLY

- 18 REAR WHEEL ASSEMBLIES

- 19 WIRE HARNESS AND BATTERY FOR KOHLER 23HP ENGINE
- 20 WIRE HARNESS AND BATTERY FOR KAWASAKI 18HP AND 21.5HP ENGINE
- 21 WIRE HARNESS ADAPTER (E-6417) FOR KAWASAKI 18HP AND 21.5HP ENGINE

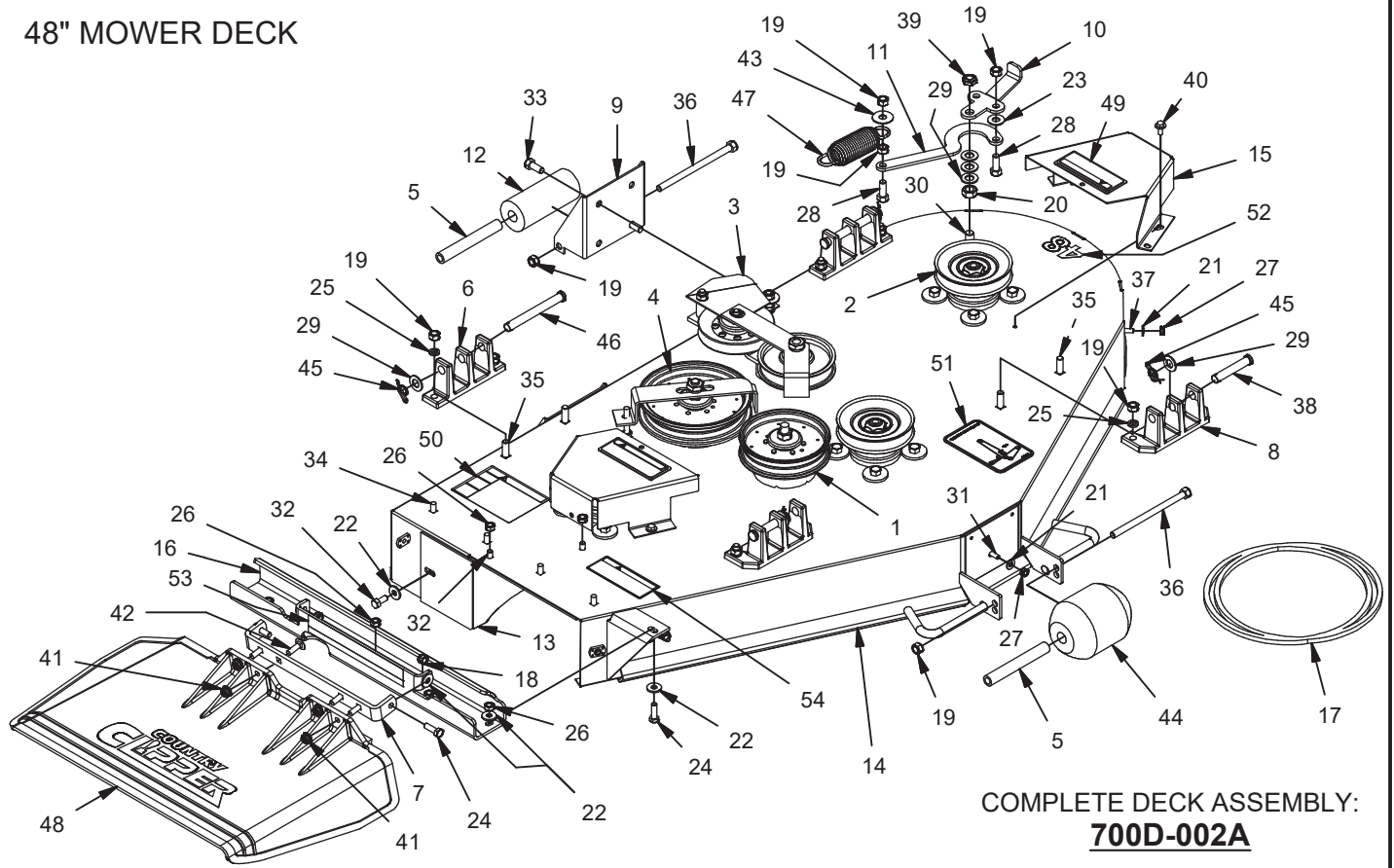
41" MOWER DECK



COMPLETE DECK ASSEMBLY:
700C-002A

Parts List			Parts List		
ITEM	PART NUMBER	DESCRIPTION	ITEM	PART NUMBER	DESCRIPTION
1	----	5" IDLER ASSEMBLY, PAGE 5	24	F-1394	3/8-16 x 1" Capscrew
2	----	SPINDLE ASSEMBLY, PAGE 4	25	F-1521	1/2" WASHER, CUSTOM
3	----	DOUBLE IDLER ASSEMBLY, PAGE 5	26	F-1671	5/16-18 x 3/4" CARRIAGE BOLT
4	643-016W	Hanger Weldment	27	F-1672	3/8-16 x 1-1/4" Carraige Bolt
5	643-110P	CHUTE HINGE	28	F-1707	5/16-18 x 2 1/4" CARRIAGE BOLT,
6	660-162P	GRIP, STANDUP	29	F-1741	3/8-16 x 6" Capscrew
7	661-045P	ARM, BELT TENSION	30	F-1889	1/2 x 2-5/8" Clevis Pin
8	686-097W	BAFFLE, DISCHARGE WLDT	31	F-1930	Carg Bolt: Short NK: 5/16-18 X 3/4" L GR5
9	700-044P	ARM, SPRING TENSION	32	F-2030	1/4 x 5/8 Self Tapping Capscrew
10	700-058P	GUIDE, BELT 41"	33	F-2063	NUT, 5/16-18 NYLOC, FLANGED
11	700-060A	COVER, PULLEY W/ DECAL	34	F-2066	5/16-18 X 1 CARRIAGE BOLT
12	700-061A	OUTLET STIFFENER W/ DECAL	35	F-2083	WASHER, 3/8 FENDER
13	700-147A	41" DECK WELDMENT W/ DECALS	36	H-1926	1/4"x1" Handle Grip
14	D-3913	BELT, BANDO, "B-124"	37	H-2239	1/2" Rue Ring
15	F-1005-02	5/16-18 Nyloc Nut	38	H-2240	1/2" x 4-1/2" Clevis Pin
16	F-1005-03	3/8-16 Stover Nut	39	H-2619	SPRING, 5 X 1-1/2, TAPERED ENDS
17	F-1009-02	5/16" Flat Washer	40	H-2723	DISCHARGE CHUTE, SMALL
18	F-1009-03	3/8" Flat Washer	41	P-10935	Decal, WARNING
19	F-1015-14	5/16-18 x 7/8" Capscrew	42	P-10941	DECAL "DANGER ROTATING BLADES"
20	F-1015-15	5/16-18 x 1" Capscrew	43	P-12496	DECAL, MISSING CHUTE
21	F-1019-03	3/8" LOCKWASHER	44	P-12706	WARNING DECAL, DISCHARGE CHUTE
22	F-1177	3/8-16 x 1-1/2" Carraige Bolt	45	P-12711	DECAL, DECK SIZE, 41
23	F-1239	3/8 LOCKNUT	46	P-12712	DECAL WRANGLER BELT ROUTING

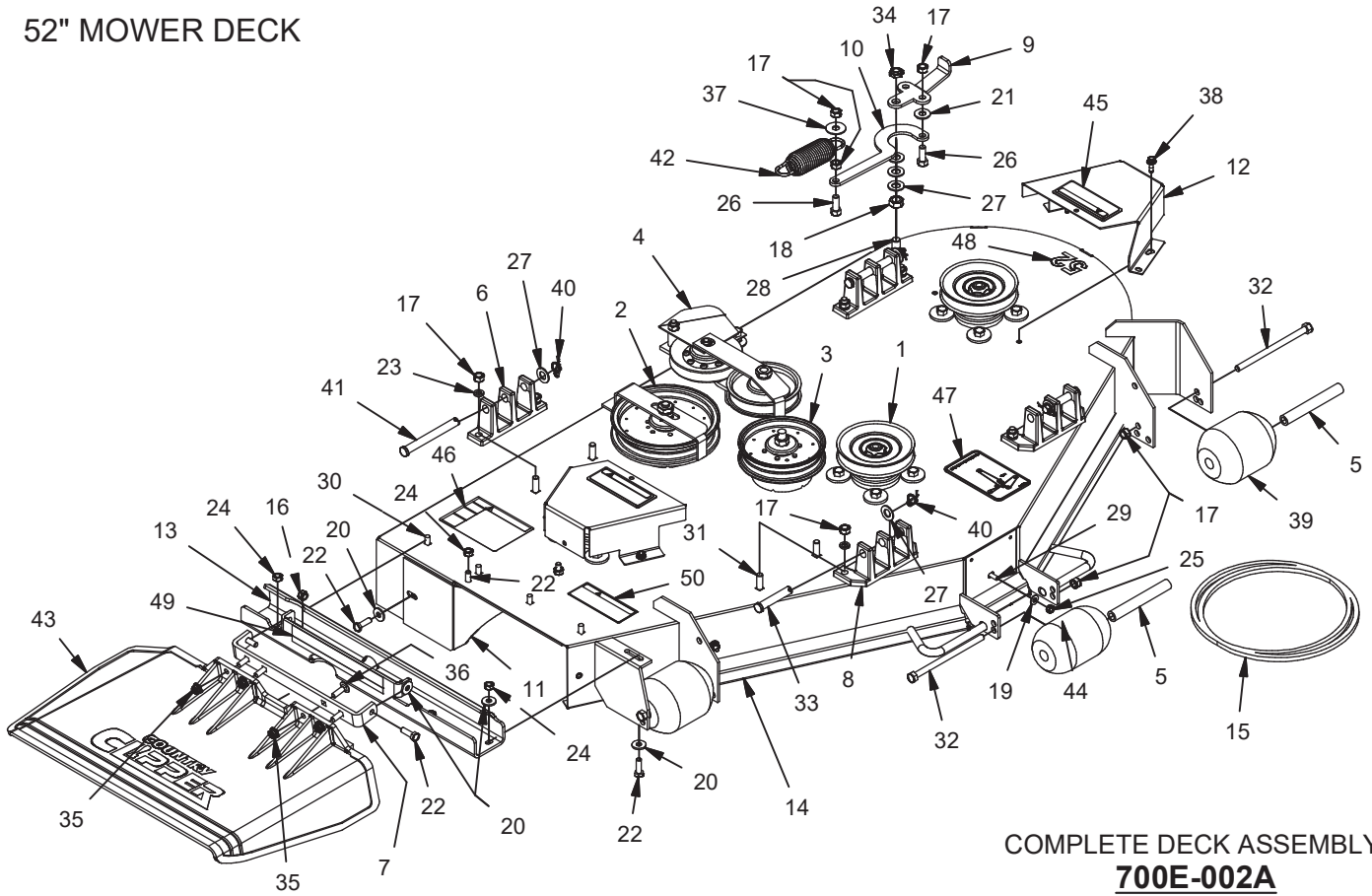
48" MOWER DECK



COMPLETE DECK ASSEMBLY:
700D-002A

Parts List			Parts List		
ITEM	PART NUMBER	DESCRIPTION	ITEM	PART NUMBER	DESCRIPTION
1	----	5" IDLER ASSEMBLY, PAGE 5	28	F-1394	3/8-16 x 1" Capscrew
2	----	SPINDLE ASSEMBLY, PAGE 4	29	F-1521	1/2" WASHER, CUSTOM
3	----	DOUBLE IDLER ASSEMBLY, PAGE 5	30	F-1526	1/2-13 x1-1/2" Capscrew
4	----	6" IDLER ASSEMBLY, PAGE 5	31	F-1538	1/4-20 x 3/4" Capscrew
5	609-183P	BUSHING	32	F-1546	5/16-18 x 3/4" Capscrew
6	643-016W	Hanger Weldment	33	F-1558	3/8-16 x 7/8" Capscrew
7	643-110P	CHUTE HINGE	34	F-1671	5/16-18 x 3/4" CARRIAGE BOLT
8	651-009W	CASTING,HANGER,WIDE BASE	35	F-1672	3/8-16 x 1-1/4" Carraige Bolt
9	659-139P	SCALPER BRACKET	36	F-1741	3/8-16 x 6" Capscrew
10	660-030P	Belt Tightner Handle	37	F-1823	Carriage Bolt, 1/4 X 3/4"
11	660-031P	Belt Tightner Arm	38	F-1898	1/2 x 2-3/4" Clevis Pin
12	660-076P	ROLLER, 2"	39	F-1966	1/2-13 THIN NYLOC NUT
13	686-080W	SPLITTER BAFFLE	40	F-2030	1/4 x 5/8 Self Tapping Capscrew
14	700-132A	48" DECK WLDT W/ DECALS	41	F-2063	NUT, 5/16-18 NYLOC, FLANGED
15	700-133A	COVER, PULLEY W/ DECAL	42	F-2066	5/16-18 X 1 CARRIAGE BOLT
16	700-136A	48" OUTLET STIFFENER W/ DECAL	43	F-2083	WASHER, 3/8 FENDER
17	D-3892	V-BELT, B, WRAP, ARAMID, 161 LENGTH	44	H-1948	Roller, 3-3/4 DIA. x 4-13/16L
18	F-1005-02	5/16-18 Nyloc Nut	45	H-2239	1/2" Rue Ring
19	F-1005-03	3/8-16 Stover Nut	46	H-2240	1/2" x 4-1/2" Clevis Pin
20	F-1005-05	1/2-13 Stover Nut	47	H-2619	SPRING,5 X 1-1/2,TAPERED ENDS
21	F-1009-01	1/4" Flat Washer	48	H-2723	DISCHARGE CHUTE, SMALL
22	F-1009-02	5/16" Flat Washer	49	P-10935	Decal, WARNING
23	F-1009-03	3/8" Flat Washer	50	P-10941	DECAL "DANGER ROTATING BLADES"
24	F-1015-15	5/16-18 x 1" Capscrew	51	P-11932	DECAL, JAZEE DECK BELT ROUTING
25	F-1019-03	3/8" LOCKWASHER	52	P-11950	DECAL, DECK SIZE, 48
26	F-1125	5/16-18 Stover Nut	53	P-12496	DECAL, MISSING CHUTE
27	F-1158	1/4-20 Stover Nut	54	P-12706	WARNING DECAL, DISCHARGE CHUTE

52" MOWER DECK



COMPLETE DECK ASSEMBLY:
700E-002A

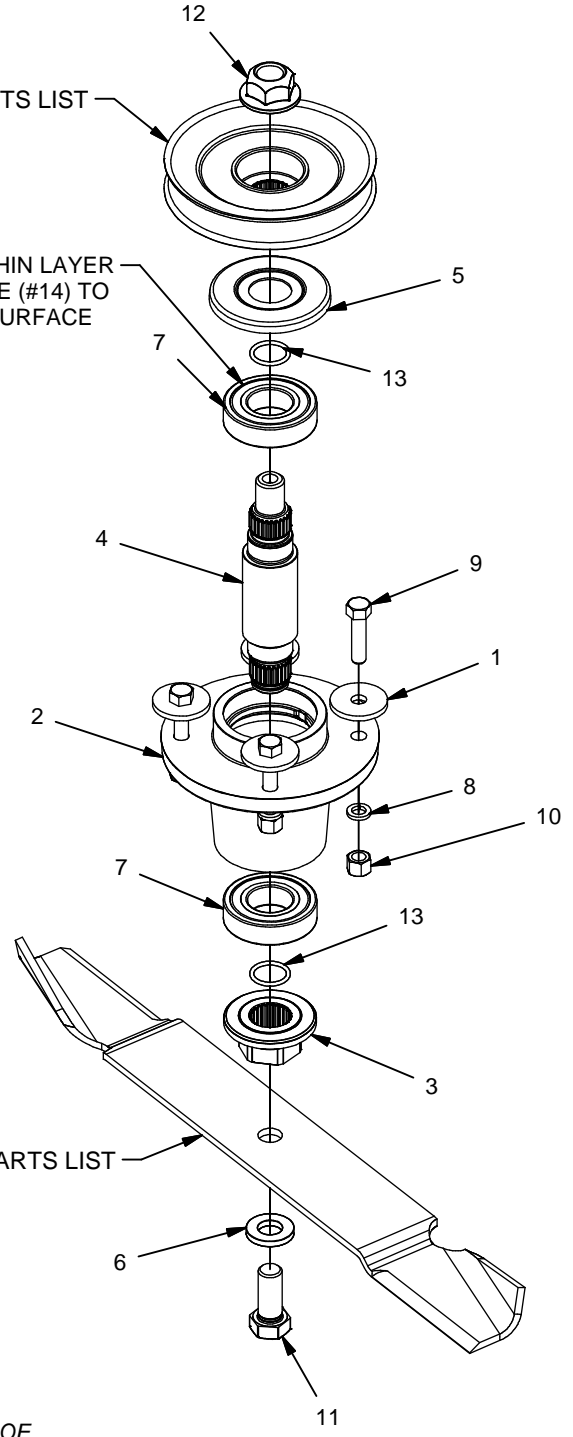
Parts List			Parts List		
ITEM	PART NUMBER	DESCRIPTION	ITEM	PART NUMBER	DESCRIPTION
1	----	SPINDLE ASSEMBLY, PAGE 4	26	F-1394	3/8-16 x 1" Capscrew
2	----	6" IDLER ASSEMBLY, PAGE 5	27	F-1521	1/2" WASHER, CUSTOM
3	----	5" IDLER ASSEMBLY, PAGE 5	28	F-1526	1/2-13 x1-1/2" Capscrew
4	----	DOUBLE IDLER ASSEMBLY, PAGE 5	29	F-1538	1/4-20 x 3/4" Capscrew
5	609-183P	BUSHING	30	F-1671	5/16-18 x 3/4" CARRIAGE BOLT
6	643-016W	Hanger Weldment	31	F-1672	3/8-16 x 1-1/4" Carraige Bolt
7	643-110P	CHUTE HINGE	32	F-1741	3/8-16 x 6" Capscrew
8	651-009W	CASTING,HANGER,WIDE BASE	33	F-1889	1/2 x 2-5/8" Clevis Pin
9	660-030P	Belt Tightner Handle	34	F-1966	1/2-13 THIN NYLOC NUT
10	660-031P	Belt Tightner Arm	35	F-2063	NUT, 5/16-18 NYLOC, FLANGED
11	686-080W	SPLITTER BAFFLE	36	F-2066	5/16-18 X 1 CARRIAGE BOLT
12	700-133A	COVER, PULLEY W/ DECAL	37	F-2083	WASHER, 3/8 FENDER
13	700-134A	OUTLET STIFFENER W/ DECAL	38	F-2119	FHCS, 1/4-20 x 0.75, LOCK PATCH, GR5
14	700-135A	52" DECK WLDT W/ DECALS	39	H-1948	Roller, 3-3/4 DIA. x 4-13/16L
15	D-3775-W	BELT, B-158	40	H-2239	1/2" Rue Ring
16	F-1005-02	5/16-18 Nyloc Nut	41	H-2240	1/2" x 4-1/2" Clevis Pin
17	F-1005-03	3/8-16 Stover Nut	42	H-2619	SPRING,5 X 1-1/2,TAPERED ENDS
18	F-1005-05	1/2-13 Stover Nut	43	H-2723	DISCHARGE CHUTE, SMALL
19	F-1009-01	1/4" Flat Washer	44	H-2798	ROLLER, 3.25OD
20	F-1009-02	5/16" Flat Washer	45	P-10935	Decal, WARNING
21	F-1009-03	3/8" Flat Washer	46	P-10941	DECAL "DANGER ROTATING BLADES"
22	F-1015-15	5/16-18 x 1" Capscrew	47	P-11932	DECAL, JAZEE DECK BELT ROUTING
23	F-1019-03	3/8" LOCKWASHER	48	P-11951	DECAL, DECK SIZE, 52
24	F-1125	5/16-18 Stover Nut	49	P-12496	DECAL, MISSING CHUTE
25	F-1158	1/4-20 Stover Nut	50	P-12706	WARNING DECAL, DISCHARGE CHUTE

SPINDLE ASSEMBLY

SEE BLADE & PULLEY PARTS LIST

TORQUE TO 140 FT-LB

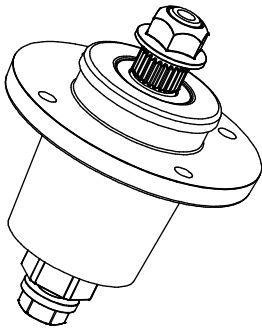
APPLY A THIN LAYER OF GREASE (#14) TO THE TOP SURFACE



SEE BLADE & PULLEY PARTS LIST

TORQUE TO 100 FT-LB

Parts List		
ITEM	PART NUMBER	DESCRIPTION
1	609-034P	Spindle Spacer Washer
2	609-285P	HSG, SPINDLE, HD
3	609-288P	DRIVER, BLADE, FRICTION, SPL
4	609-289P	SHAFT, SPINDLE, HD
5	609-292P	CAP, BEARING
6	660-099P	WASHER, BLADE, 5/8
7	D-3867	BRG, BALL, 6206, F-SEALS
8	F-1019-03	3/8" LOCKWASHER
9	F-1572	3/8-24 x 1.5" Capscrew
10	F-1573	3/8-24 LOCKNUT
11	F-2073	HHCS, 5/8-11X1.50, GR8, YZ
12	F-2078	NUT, 3/4-16, TOP LOCK, GR-GT, YZ
13	H-2639	O'RING, -117, 70 DURO
14	H-2707	GREASE, RYKOTAC .5 OZ. PKT



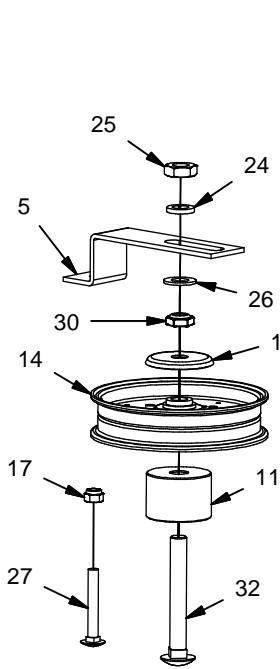
COMPLETE SPINDLE ASSEMBLY
WITHOUT BLADE, PULLEY & FASTENERS:
629FN-001A

* NOTE: NEW MOWERS ARE SHIPPED FROM THE FACTORY WITH 3 - 4 oz. OF CHEVRON SRI NLGI 2 GREASE INSIDE EACH SPINDLE HOUSING.

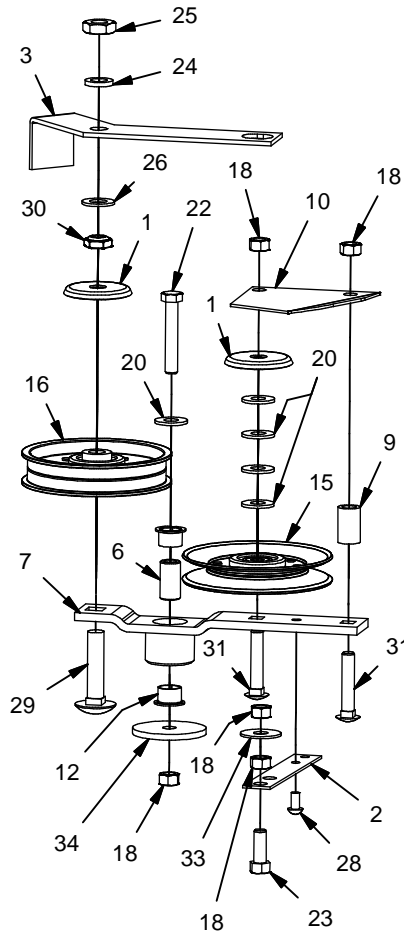
Blade & Pulley Parts List		Blade & Pulley Parts List	
PART NUMBER	DESCRIPTION	PART NUMBER	DESCRIPTION
668-037P	48" DECK SPINDLE PULLEY	H-2665	48" DECK GATOR BLADE
668-038P	52" DECK SPINDLE PULLEY	H-2666	52" DECK GATOR BLADE
668-039P	41" DECK SPINDLE PULLEY	H-2667	41" DECK GATOR BLADE
H-2659	48" DECK LOW LIFT BLADE	H-2882	48" DECK HIGH LIFT BLADE (STANDARD)
H-2660	52" DECK LOW LIFT BLADE	H-2883	52" DECK HIGH LIFT BLADE (STANDARD)
H-2661	41" DECK LOW LIFT BLADE	H-2885	41" DECK HIGH LIFT BLADE (STANDARD)

IDLER ASSEMBLIES

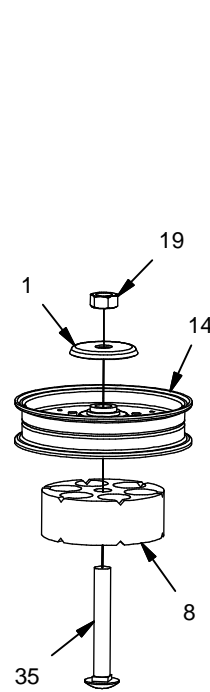
**41" DECK
5" IDLER ASSEMBLY**



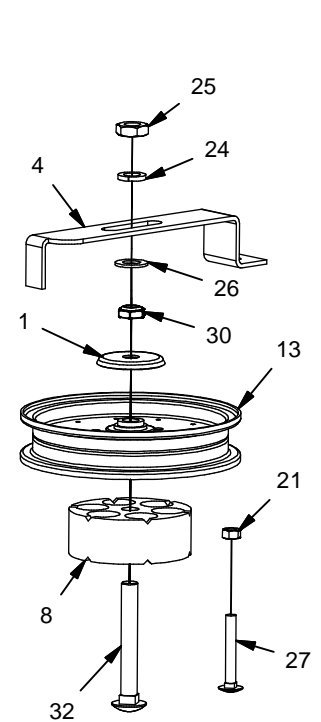
**41", 48" & 52" DECK
DOUBLE IDLER ASSEMBLY**



**48" & 52" DECK
5" IDLER ASSEMBLY**

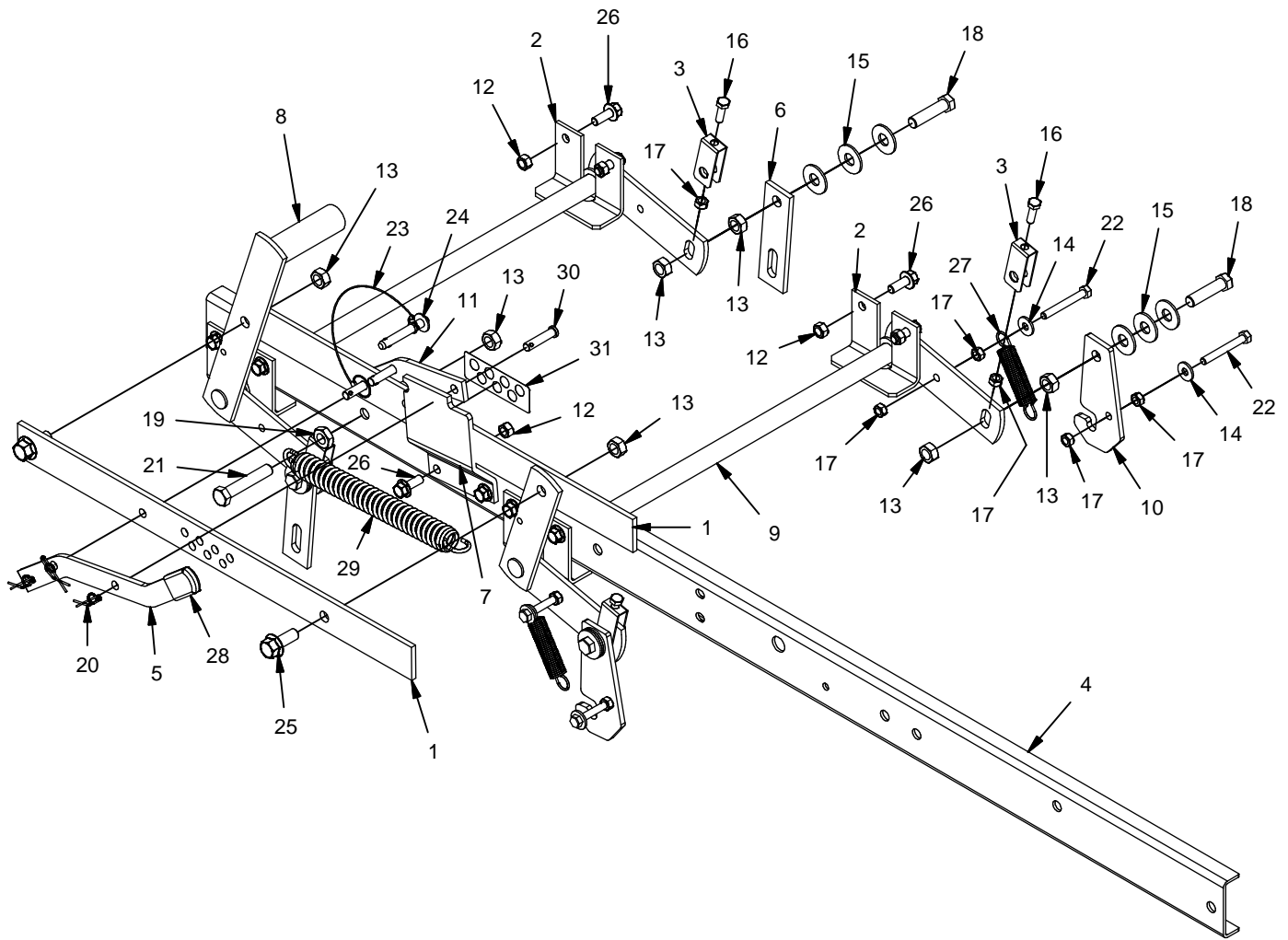


**48" & 52" DECK
6" IDLER ASSEMBLY**



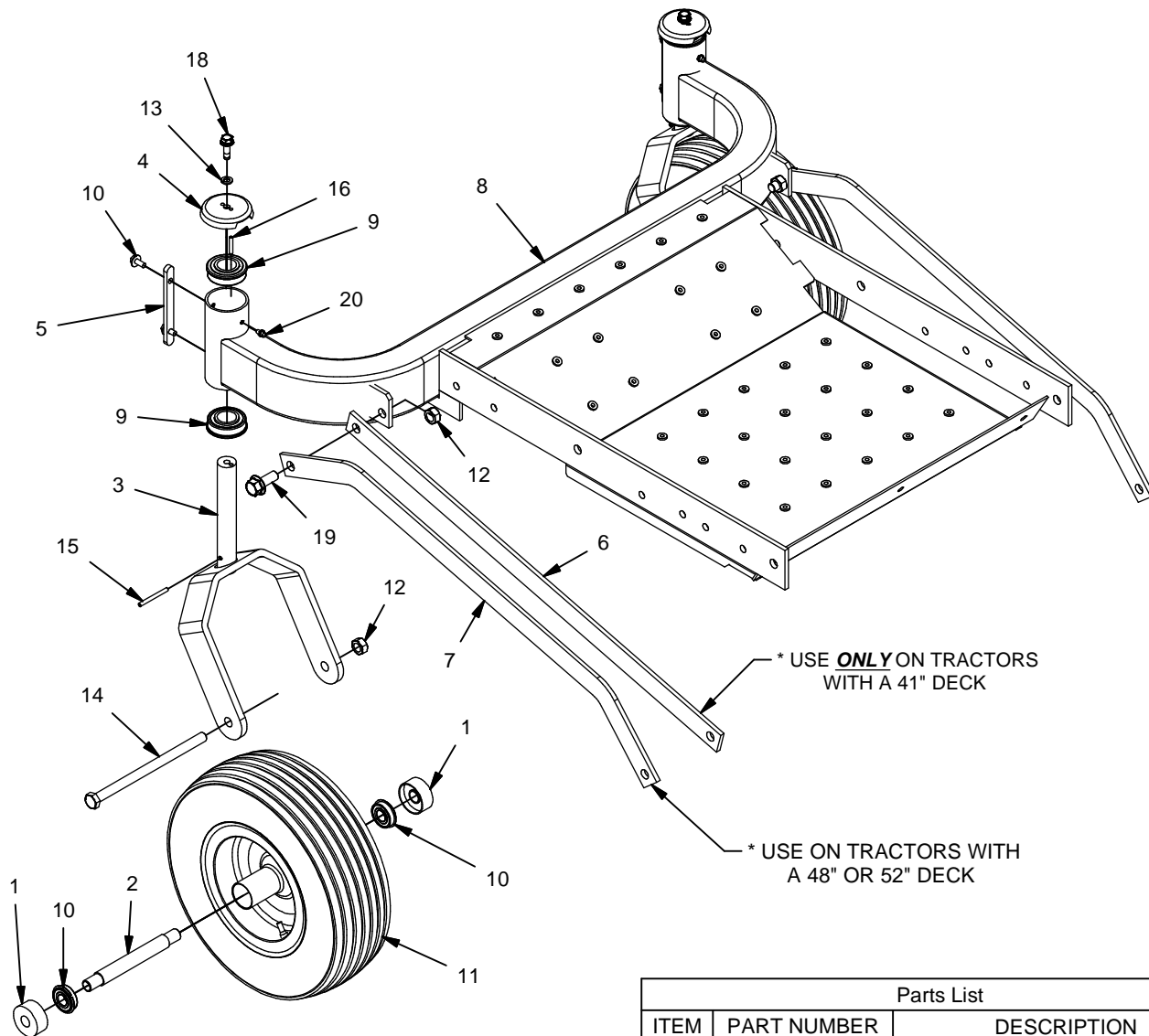
Parts List			Parts List		
ITEM	PART NUMBER	DESCRIPTION	ITEM	PART NUMBER	DESCRIPTION
1	620-201P	WASHER, BEARING CAP	19	F-1005-05	1/2-13 Stover Nut
2	660-081P	EXTENSION FOR SPRING	20	F-1009-03	3/8" Flat Washer
3	660-110P	BELT KEEPER, B BELT	21	F-1125	5/16-18 Stover Nut
4	660-112P	BELT KEEPER	22	F-1268	3/8-16 x2-1/4" Capscrew
5	660-114P	BELT KEEPER, SINGLE END	23	F-1394	3/8-16 x 1" Capscrew
6	660-135P	MOUNTING PIN	24	F-1464	1/2" LOCKWASHER
7	660-138W	IDLER ARM WLDT, 1/2" OFFSET	25	F-1489	1/2-13 Hex Jam Nut
8	660-148P	SPACER, IDLER MOUNT	26	F-1521	1/2" WASHER, CUSTOM
9	668-021P	SPACER, BELT GUARD	27	F-1707	5/16-18 x 2 1/4" CARRIAGE BOLT,
10	668-029P	BELT GUARD	28	F-1733	1/4" x 1/2" DRIVE SCREW
11	700-008P	SPACER 2.000OD X .531ID X 1.375HT	29	F-1822	1/2-13 X 2-1/4" CARRIAGE BOLT
12	D-3730	Flanged Bushing 5/8" Bore	30	F-1966	1/2-13 THIN NYLOC NUT
13	D-3903	PULLEY, FLAT IDLER, 6" (NTN)	31	F-1976	3/8-16 x 2" Carraige Bolt
14	D-3904	PULLEY, FLAT IDLER, 5" (NTN)	32	F-2079	CARRIAGE BOLT 1/2-13 X 3-3/4"
15	D-3923	PULLEY, V-IDLER, 4.59 OD, AB, NTN	33	F-2083	WASHER, 3/8 FENDER
16	D-3924	PULLEY, FLT IDLER, NTN, DBL INSRT	34	F-2102	WASHER.406ID X 2.25OD X 7GA THK
17	F-1005-02	5/16-18 Nyloc Nut	35	F-2106	1/2-13 X 3-1/2" CARRIAGE BOLT
18	F-1005-03	3/8-16 Stover Nut			

DECK LIFT ASSEMBLY

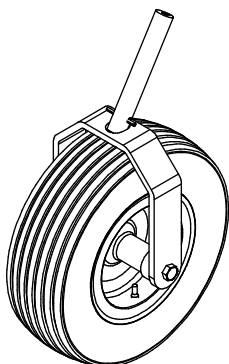


Parts List			Parts List		
ITEM	PART NUMBER	DESCRIPTION	ITEM	PART NUMBER	DESCRIPTION
1	700-030P	LIFT BAR LINK	17	F-1125	5/16-18 Stover Nut
2	700-037P	HANGER BRACKET, FLANGED	18	F-1293	1/2-13 x 2" Capscrew
3	700-038P	ADJUSTMENT SHACKLE	19	F-1489	1/2-13 Hex Jam Nut
4	700-040P	FRAME RAIL (L)	20	F-1492	5/16-3/8 Rue Ring
5	700-053P	HEIGHT ADJUSTMENT HANDLE	21	F-1668	1/2-13 x 2-3/4" Capscrew
6	700-054P	HANGER PLATE	22	F-1893	5/16-8 x 2-1/2 Capscrew
7	700-099P	PLATE, LATCH STOP	23	F-2069	PLASTIC LANYARD
8	700-100W	WLDMT, DECK LIFT, FRONT	24	F-2096	LOCK PIN, POSITIVE 3/8 X 1-1/2
9	700-101W	WLDMT, DECK LIFT, REAR	25	F-2127	FHCS, 1/2-13 x1.25, YZ, GR5
10	700-123P	HANGER, REAR	26	F-2141	FHCS, 3/8-16 x 1", YZ, GR5
11	700-130P	HANDLE, HEIGHT ADJUSTMENT, SM	27	H-1635	SPRING, EXT, 3/4"OD X 4" OAL
12	F-1005-03	3/8-16 Stover Nut	28	H-1850	GRIP, VINYL
13	F-1005-05	1/2-13 Stover Nut	29	H-2749	SPRING,COUNTER BALANCE
14	F-1009-02	5/16" Flat Washer	30	H-2802	PIN, CLEVIS, .375 X 1.625
15	F-1009-05	1/2" FLAT WASHER	31	P-12921	DECAL, WRANGLER CUT HEIGHT
16	F-1015-15	5/16-18 x 1" Capscrew			

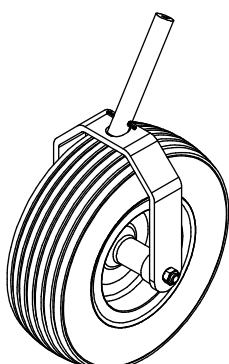
FRONT END ASSEMBLY



IN ADDITION TO SINGLE PIECE PARTS, FRONT CASTER WHEELS MAY BE PURCHASED AS ASSEMBLIES. LEFT AND RIGHT SIDE MARKED BELOW. * INDICATES ASSEMBLY PIECE PARTS.



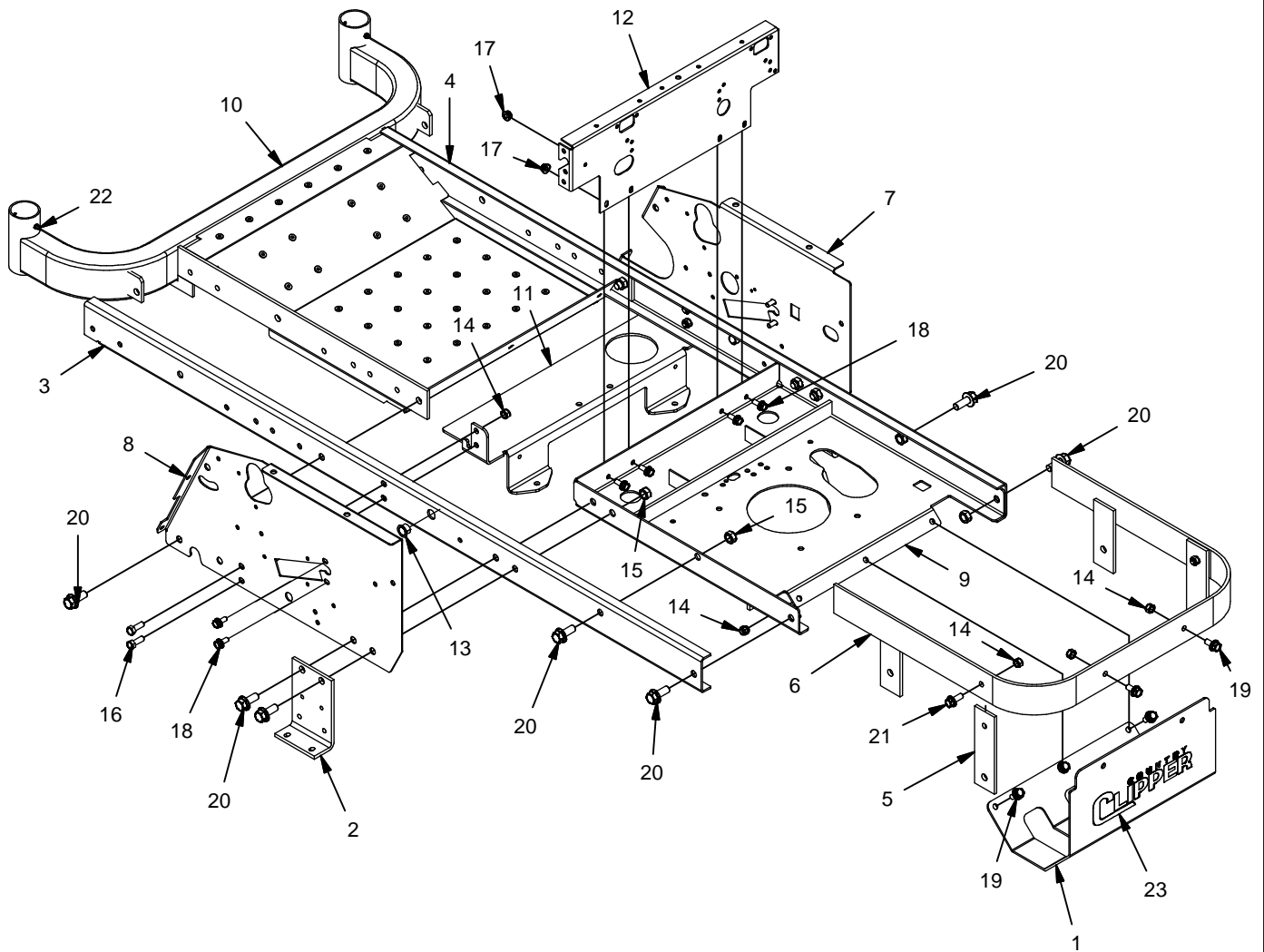
659-181A
(LEFT)



659-182A
(RIGHT)

Parts List		
ITEM	PART NUMBER	DESCRIPTION
1	611-135P	Bearing Shield
2	611-136P	Bearing Spacer
3	617-375W	Caster Yoke Weldment
4	636-176P	Bearing Cap
5	659-185P	Stop Tab
6	700-029P	DRAG BAR
7	700-071P	DRAG BAR, 48 WRANGLER
8	700-113W	WLDT, FRONT AXLE
9	D-2008-02	Bearing SF-16-32
10	D-3432	Bearing 5/8" I.D. 1-3/8" O.D.
11	D-3574	13" Tire w/Wheel, Ribbed
12	F-1005-05	1/2-13 Stover Nut
13	F-1019-02	5/16" LockWasher
14	F-1129	1/2-13 x 8" Capscrew
15	F-1456	3/16 x 2" Spiral Pin
16	F-1855	3/16 x 1" Roll Pin (Heavy Duty)
17	F-2030	1/4-20 x 5/8 Self Tapping Capscrew
18	F-2121	FHCS, 5/16-18 x 1.00, LK PATCH
19	F-2127	FHCS, 1/2-13 x 1.25, YZ, GR5
20	H-1056	1/4" Grease Fitting

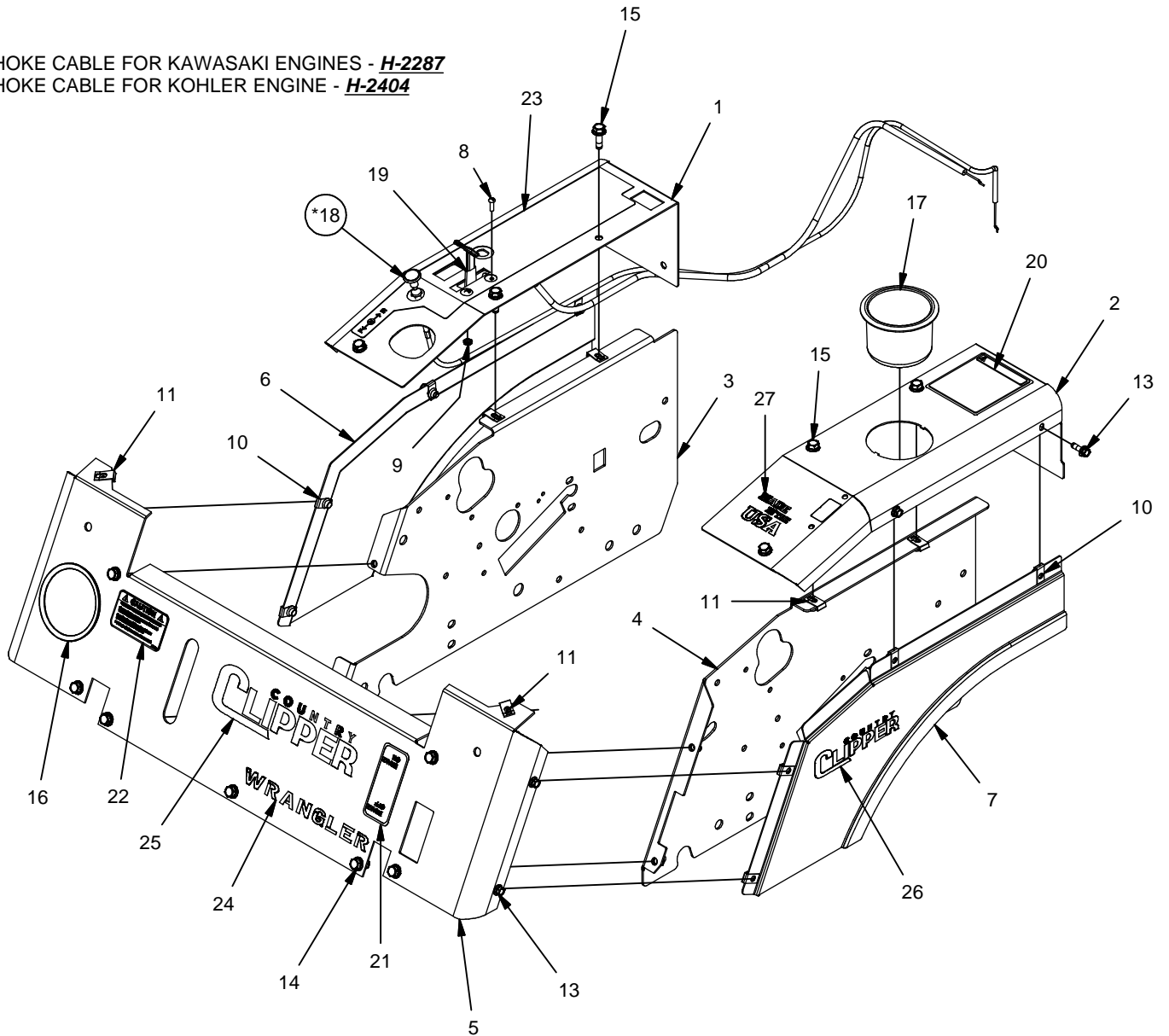
FRAME ASSEMBLY



Parts List			Parts List		
ITEM	PART NUMBER	DESCRIPTION	ITEM	PART NUMBER	DESCRIPTION
1	629-899A	MUFFLER GUARD W/ DECAL	13	D-3730	Flanged Bushing 5/8" Bore
2	659-350P	HYDRO MOUNT BRACKET	14	F-1005-03	3/8-16 Stover Nut
3	700-040P	FRAME RAIL (L)	15	F-1005-05	1/2-13 Stover Nut
4	700-041P	FRAME RAIL (R)	16	F-1394	3/8-16 x 1" Capscrew
5	700-078P	BAR, BUMPER BRACE	17	F-2063	Nut, 5/16-18 Nyloc, Flanged
6	700-080W	WLDT,ENGINE GUARD	18	F-2120	FHCS, 5/16-18 x 0.75, YZ, GR5
7	700-083P	SIDE PANEL, RH, JOYSTICK	19	F-2124	FHCS, 3/8-16 x 0.75, YZ, GR5
8	700-084P	SIDE PANEL, LH, JOYSTICK	20	F-2127	FHCS, 1/2-13 x1.25, YZ, GR5
9	700-107W	WLDT, MOTOR MOUNT	21	F-2141	FHCS, 3/8-16 x 1", YZ, GR5
10	700-113W	WLDT, FRONT AXLE	22	H-1056	1/4" Grease Fitting
11	707-036P	BRACE,TRANSMISSION	23	P-12984	DECAL, NEW CC, LG, BLK
12	707-039P	REAR SEAT SUPPORT			

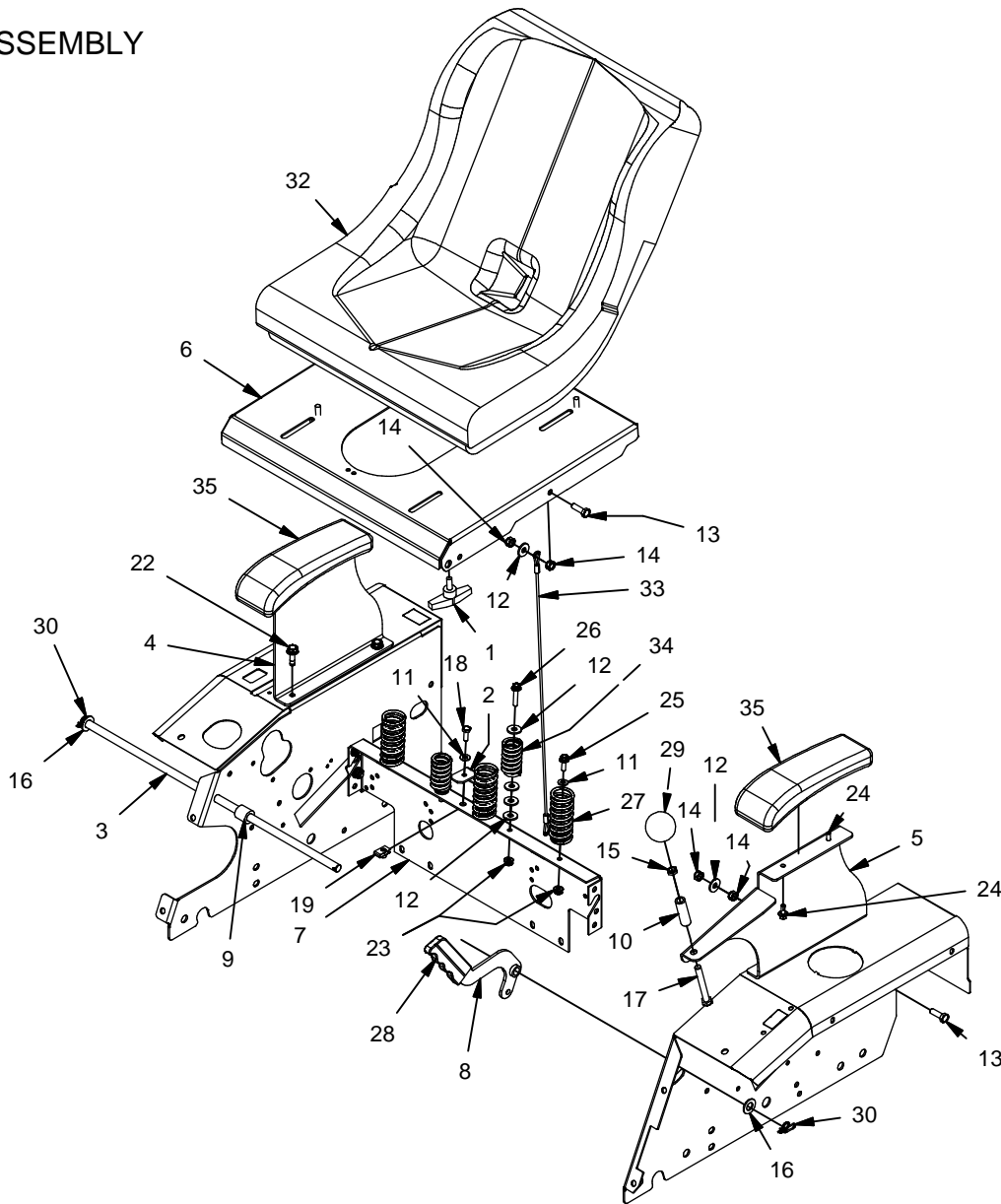
FENDER ASSEMBLY

CHOKE CABLE FOR KAWASAKI ENGINES - **H-2287**
 CHOKE CABLE FOR KOHLER ENGINE - **H-2404**



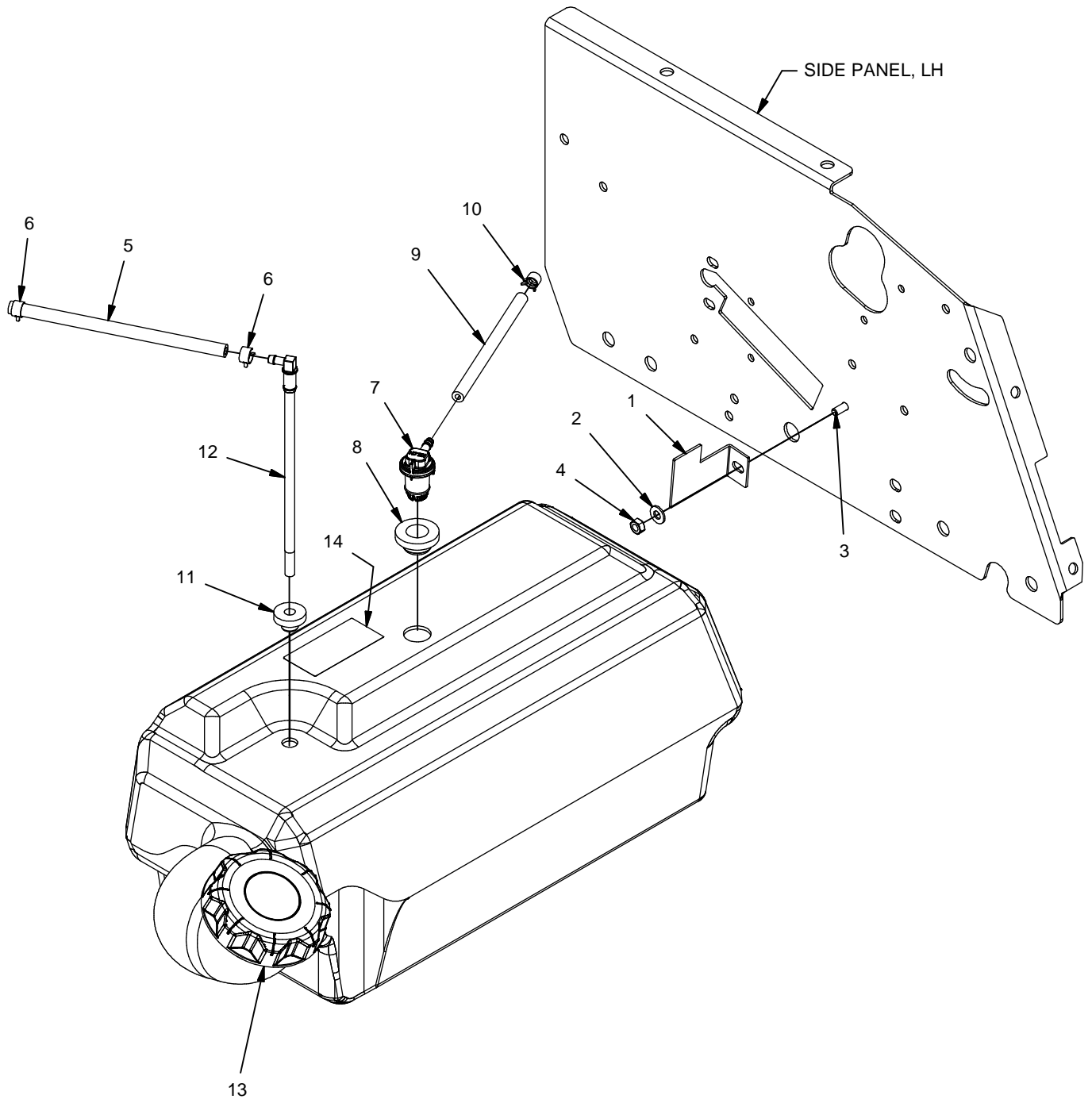
Parts List			Parts List		
ITEM	PART NUMBER	DESCRIPTION	ITEM	PART NUMBER	DESCRIPTION
1	625-146A	FENDER CAP W/ DECAL, RH, JS	15	F-2121	FHCS, 5/16-18 x 1.00, LOCK PATCH
2	625-147A	FENDER CAP W/ DECALS, LH, JS	16	H-1626	"U"-Channel Trim
3	700-083P	PANEL, SIDE, RH, JS	17	H-2228	Cup Holder
4	700-084P	PANEL, SIDE, LH, JS	*18	H-2287	Choke cable (KAWASAKI ENGINE)
5	700-149A	WRANGLER FRONT PANEL W/ DECALS	--	H-2404	Choke cable (KOHLER ENGINE)
6	707-101A	FENDER SKIRT W/ DECAL, RH	19	H-2610	Throttle cable
7	707-102A	FENDER SKIRT W/ DECAL, LH	20	P-11370	Decal, WARNING
8	F-1022-26	10-32 x 5/8" MachineScrew	21	P-11382	Brake On-Off Decal w/Lightning Bolt
9	F-1448	10-32 Nyloc Locknut	22	P-12557	Caution Fuel Decal
10	F-1858	1/4-20 "U"-Nut	23	P-12925	DECAL, CONTROL PANEL
11	F-1860	5/16-18 UNut	24	P-12978	DECAL, WRANGLER, GLOSS BLK
12	F-2063	Nut, 5/16-18 Nyloc, Flanged	25	P-12984	DECAL, NEW CC, LG, BLK
13	F-2119	FHCS, 1/4-20 x 0.75, LOCK PATCH	26	P-12985	DECAL, NEW CC, SM, BLK
14	F-2120	FHCS, 5/16-18 x 0.75, YZ, GR5	27	P-13000	DECAL, MADE IN THE USA

SEAT ASSEMBLY



Parts List			Parts List		
ITEM	PART NUMBER	DESCRIPTION	ITEM	PART NUMBER	DESCRIPTION
1	659-073A	T HANDLE KNOB ASSEMBLY	19	F-1858	1/4-20 "U"-Nut
2	659-137P	Battery Hold Down	20	F-2063	Nut, 5/16-18 Nyloc, Flanged
3	700-091P	PIN,SEAT HINGE	21	F-2120	FHCS, 5/16-18 x 0.75, YZ, GR5
4	700-092P	PLT,ARM REST,RH	22	F-2121	FHCS, 5/16-18 x 1 LOCK PATCH, GR5
5	700-093P	PLATE, ARM REST, LH W/HANDLE	23	F-2132	NUT, 1/4-20 NYLOC, FLANGED
6	700-097P	PLATE,SEAT,SLOTTED	24	F-2134	HFCS,1/4-20 X 0.625,YZ,SELF TAPPING
7	707-039P	REAR SEAT SUPPORT	25	F-2162	FHCS, 1/4-20 x 3/4", GR5, YZ
8	707-042W	WLDT,BRAKE HANDLE	26	F-2182	FHCS, 1/4-20 x 1-1/4", GR5, YZ
9	707-046P	SPACER,SEAT PAN	27	H-1920	SPRING, SEAT
10	707-068P	SPACER, HANDLE	28	H-1926	1/4"x1" Handle Grip
11	F-1009-01	1/4" Flat Washer	29	H-2130	BALL 1 7/8
12	F-1009-02	5/16" Flat Washer	30	H-2239	1/2" Rue Ring
13	F-1015-15	5/16-18 x 1" Capscrew	31	H-2449	SINGLE CYLINDER ENGINE SEAT
14	F-1125	5/16-18 Stover Nut	32	H-2449	MilSCO Seat
15	F-1486	3/8-16 Jam Nut	33	H-2460	Spring Extention Cable
16	F-1521	1/2" WASHER, CUSTOM	34	H-2636	SPRING,CMPR,SEAT,CHARGER
17	F-1537	3/8-16 x 3" Capscrew	35	H-2753	PAD,ARM REST,MOLDED
18	F-1538	1/4-20 x 3/4" Capscrew			

FUEL TANK ASSEMBLY

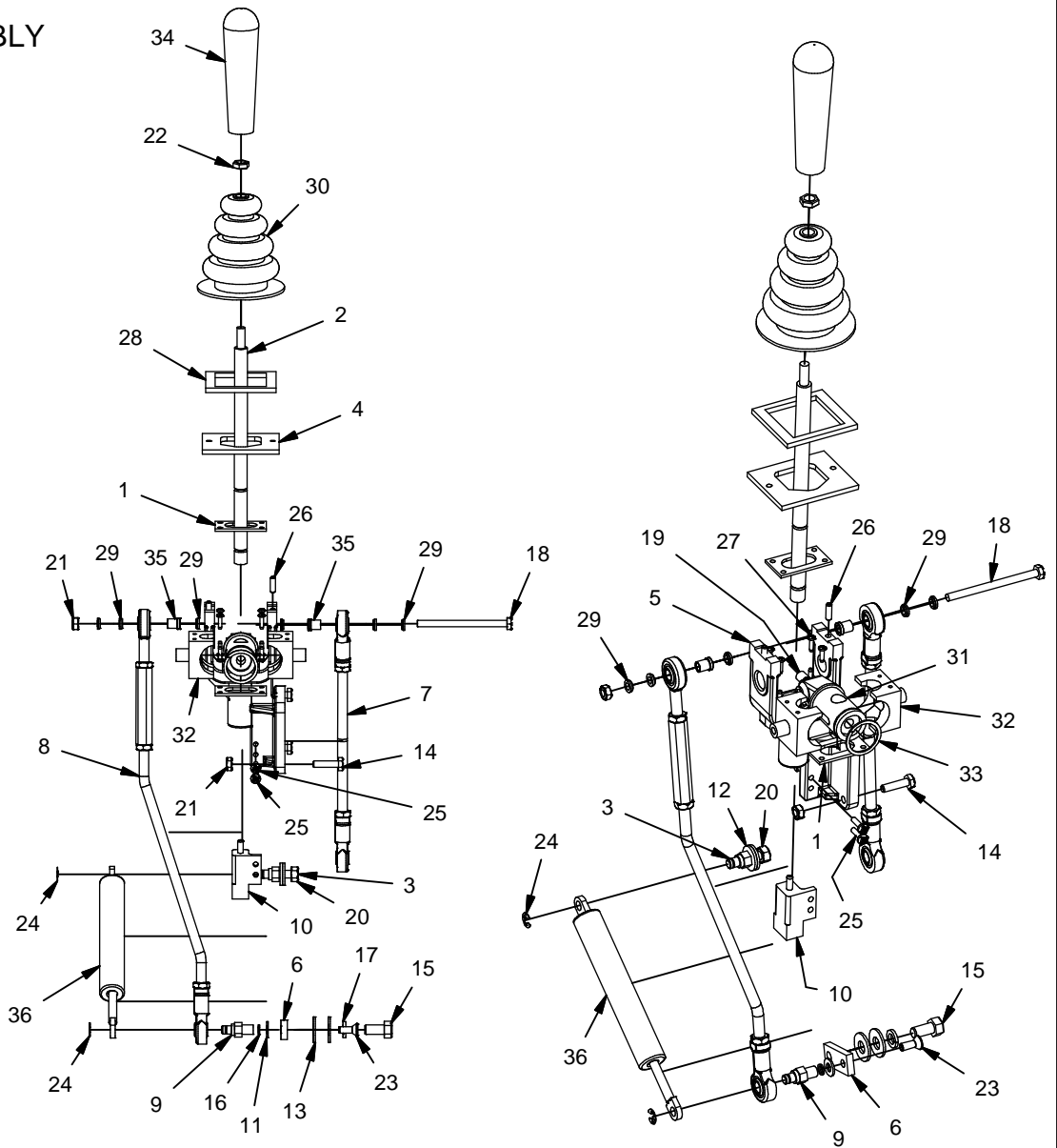


COUNTRY CLIPPER DOES **NOT** REPLACE INDIVIDUAL TANKS.
IF THE TANK IS NEEDED, THE COMPLETE ASSEMBLY MUST BE REQUESTED.

H-2724 - FUEL TANK ASSEMBLY, SMALL

Parts List			Parts List		
ITEM	PART NUMBER	DESCRIPTION	ITEM	PART NUMBER	DESCRIPTION
1	700-108P	STRAP, FUEL TANK	8	H-2679	REMOTE VENT GROMMET
2	F-1009-01	1/4" Flat Washer	9	H-2697	HOSE, VAPOR LINE
3	F-1015-02	1/4-20 x 5/8" Capscrew	10	H-2698	CLAMP, .406 OD FUEL LINE
4	F-1158	1/4-20 Stover Nut	11	H-2741	GROMMET, PICK UP TUBE
5	H-1648	HOSE, FUEL LINE	12	H-2742	PICK UP TUBE
6	H-1687	1/2 O.D. Hose Spring Clamp	13	H-2743	3.50" CARB CAP W/ TETHER
7	H-2678	REMOTE VENT	14	P-12922	CARB/EPA LABEL

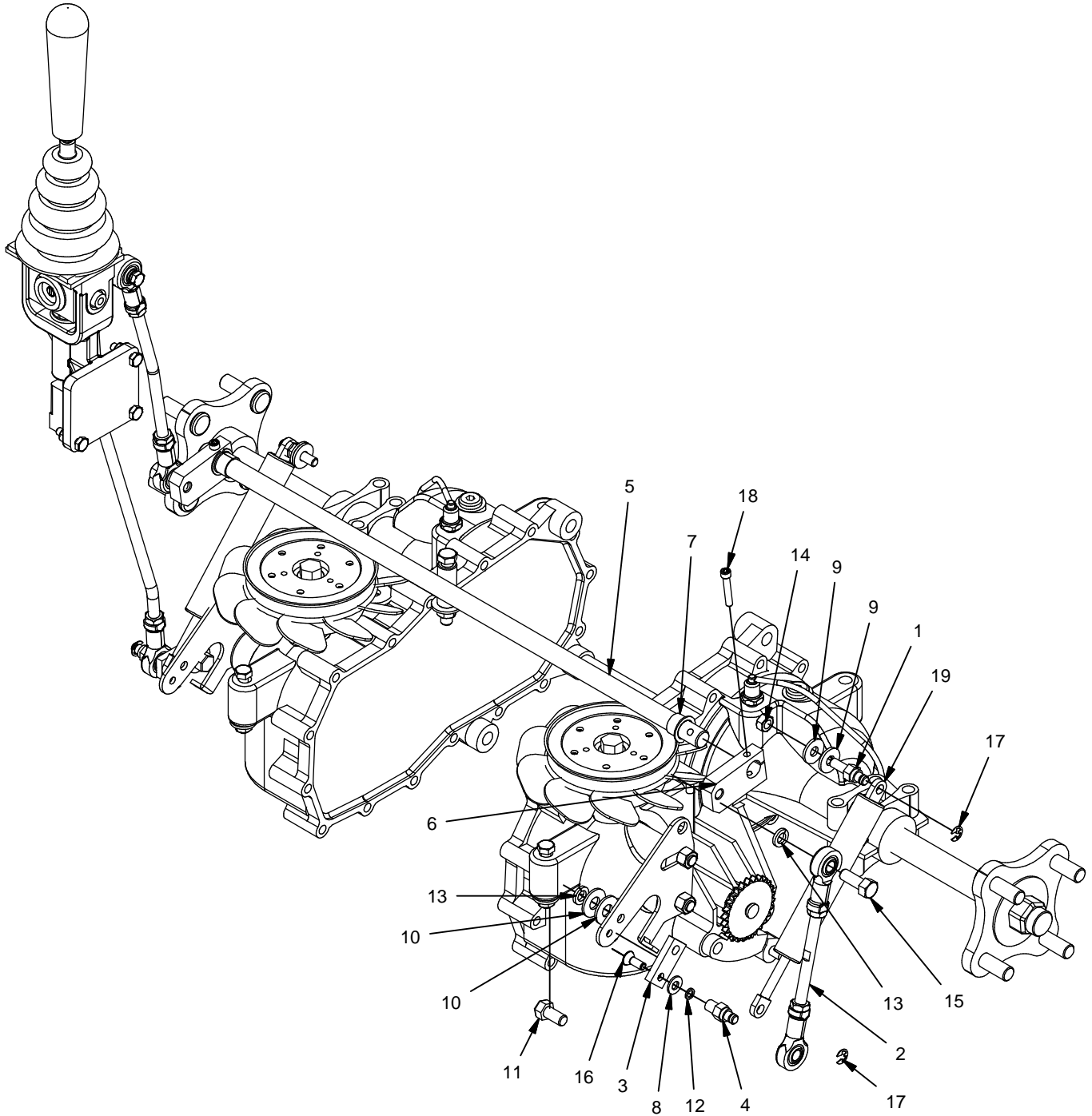
JOYSTICK ASSEMBLY



JOYSTICK ASSEMBLY:
647-122A
 JOYSTICK REPAIR KIT:
612-332A

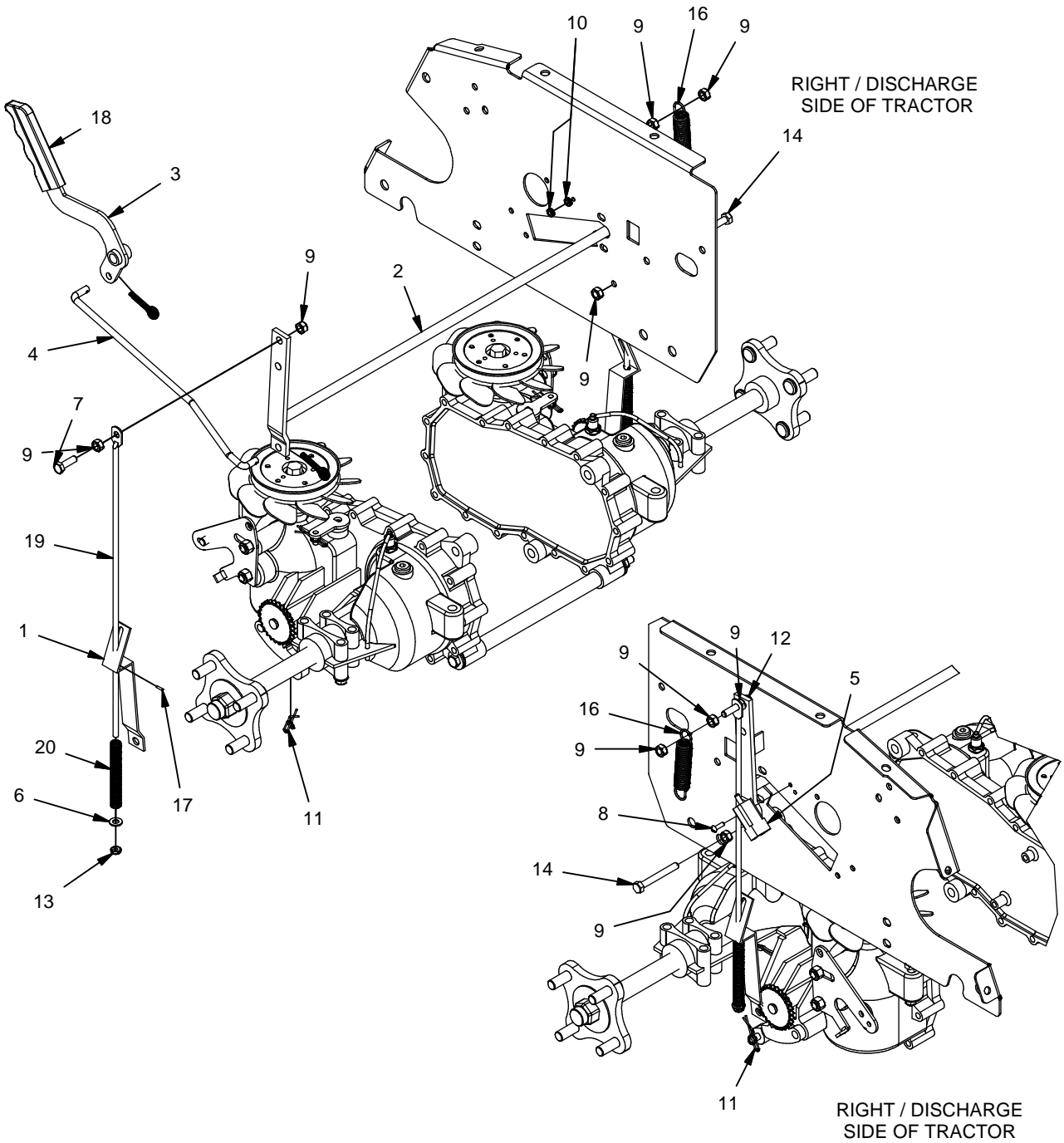
Parts List			Parts List		
ITEM	PART NUMBER	DESCRIPTION	ITEM	PART NUMBER	DESCRIPTION
1	619-306P	Pivot Block Plate	19	F-1120	Ball Plunger
2	621-140A	Joystick Shaft Assembly	20	F-1125	5/16-18 Stover Nut
3	638-028P	Damper Bolt, 5/16-18 X 3/4"	21	F-1158	1/4-20 Stover Nut
4	659-129P	Top Plate	22	F-1486	3/8-16 Jam Nut
5	659-144P	JOYSTICK LEVER CONTROL YOKE	23	F-1609	1/4-20 x 3/4" F.H.C.S.
6	659-275P	Tracking Adjustment Cam	24	F-1610	E-Ring for 1/4" Shaft
7	663-049P	STEERING LINK, SHORT	25	F-1993	#10-32 x 5/8 Phillips P.H.C.S.
8	663-050P	STEERING LINK, LONG	26	F-1999	Roll Pin 3/8"Dia x 5/8"
9	663-051P	Damper Stud (Female)	27	F-2110	SCREW,#6-20 X 0.50,THD FORMING,CZ
10	E-6297	Brake Switch	28	H-1947	GASKET,FOAM,JOYSTICK
11	F-1009-01	1/4" Flat Washer	29	H-1989	Ball Joint Bushing
12	F-1009-02	5/16" Flat Washer	30	H-1991	JoyStick Boot
13	F-1009-03	3/8" Flat Washer	31	H-1992	Pivot Shaft
14	F-1015-05	1/4-20 x 1" Capscrew	32	H-1993	Pivot Block
15	F-1015-23	3/8-16 x 3/4" Capscrew	33	H-1997	Snap Ring
16	F-1019-01	1/4" LockWasher	34	H-2317	GRIP HANDLE, TAPERED
17	F-1019-03	3/8" LOCKWASHER	35	H-2465	ADAPTER, ROD END, LONG
18	F-1020-01	1/4-20 x 3-1/2" Capscrew	36	H-2467	Dual Action Damper

JOYSTICK STEERING ASSEMBLY



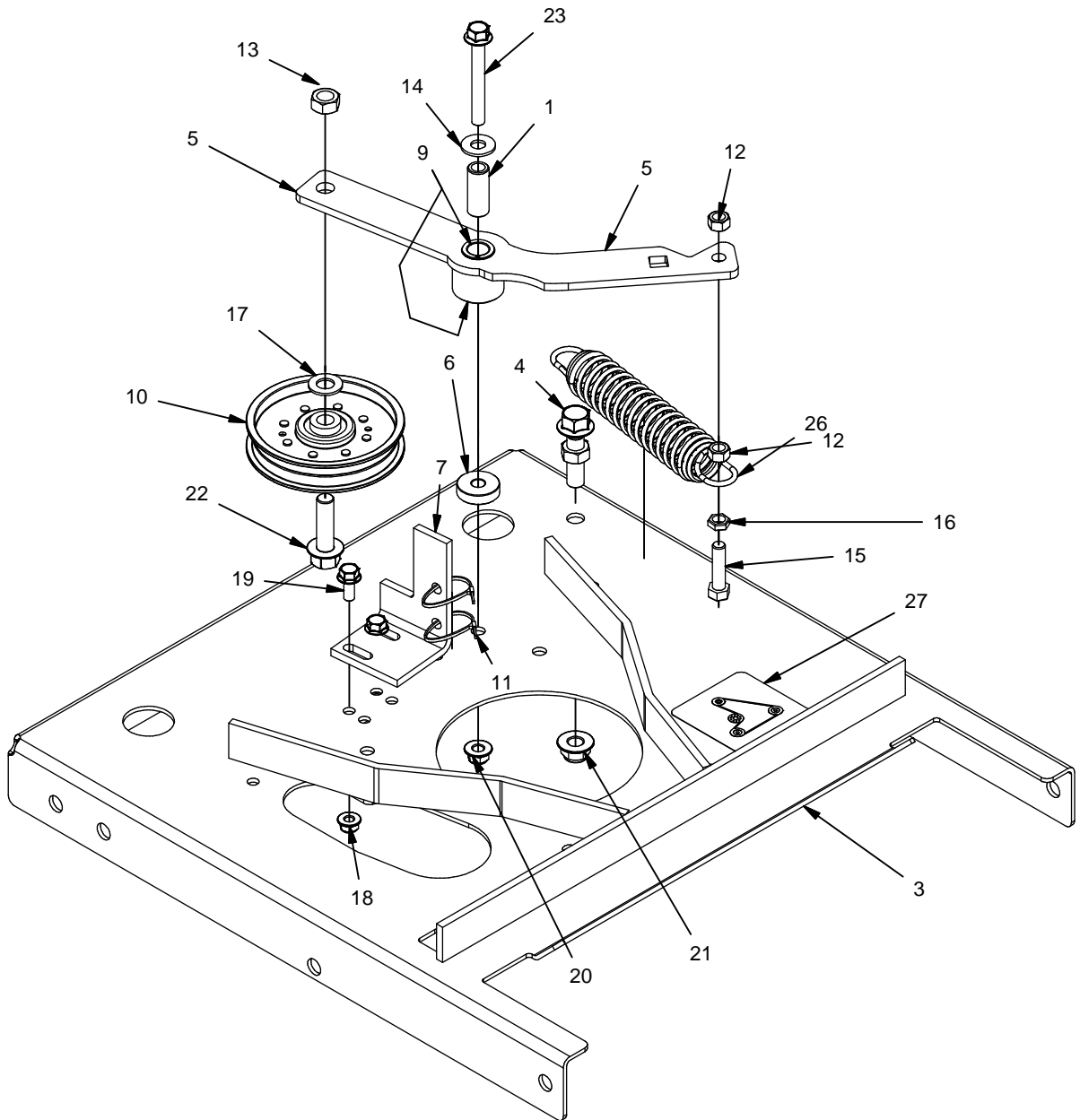
Parts List			Parts List		
ITEM	PART NUMBER	DESCRIPTION	ITEM	PART NUMBER	DESCRIPTION
1	638-028P	Damper Bolt, 5/16-18 X 3/4"	11	F-1015-23	3/8-16 x 3/4" Capscrew
2	659-127P	Linkage Rod (Short)	12	F-1019-01	1/4" LockWasher
3	659-275P	Tracking Adjustment Cam	13	F-1019-03	3/8" LOCKWASHER
4	663-051P	Damper Stud (Female)	14	F-1125	5/16-18 Stover Nut
5	700-150P	ROD, SHIFT CROSS	15	F-1394	3/8-16 x 1" Capscrew
6	700-151P	ARM, SWIVEL	16	F-1609	1/4-20 x 3/4" F.H.C.S.
7	D-3730	Flanged Bushing 5/8" Bore	17	F-1610	E-Ring for 1/4" Shaft
8	F-1009-01	1/4" Flat Washer	18	F-2206	SHCS, 12-24 X 1-1/4
9	F-1009-02	5/16" Flat Washer	19	H-2467	Dual Action Damper
10	F-1009-03	3/8" Flat Washer			

BRAKE ASSEMBLY



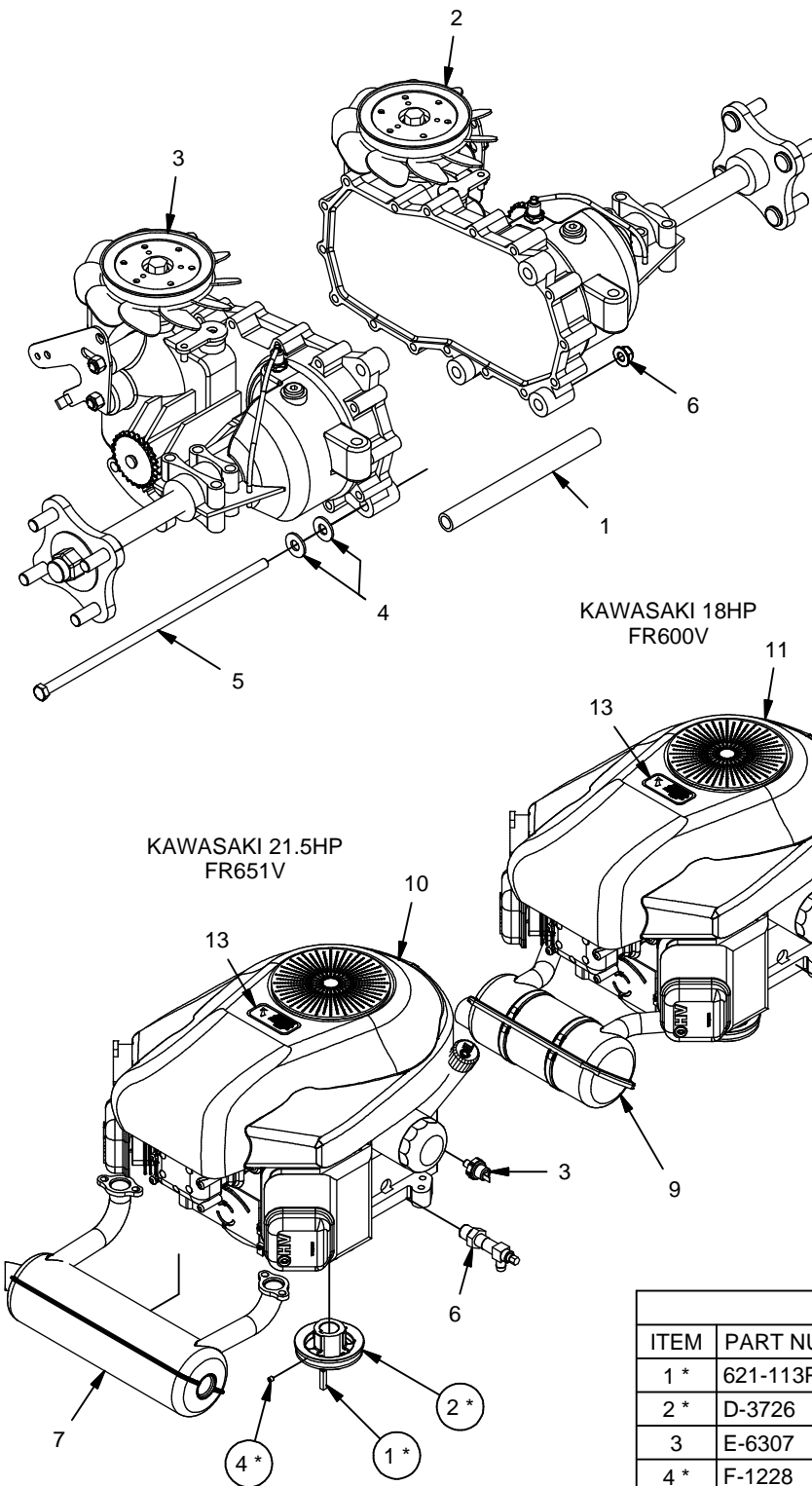
Parts List			Parts List		
ITEM	PART NUMBER	DESCRIPTION	ITEM	PART NUMBER	DESCRIPTION
1	659-013P	Lower Brake Link	11	F-1492	5/16-3/8 Rue Ring
2	659-206W	BRAKE ROD WLDT	12	F-1693	5/16-18 x 1-1/2" All Thd Capscrew
3	707-042W	WLDT,BRAKE HANDLE	13	F-1748	1/4-20 Thin Nyloc Nut
4	707-044P	LINK, PARK BRAKE	14	F-1893	5/16-8 x 2-1/2 Capscrew
5	E-6297	Brake Switch	16	H-1635	SPRING, EXT, 3/4"OD X 4" OAL
6	F-1009-01	1/4" Flat Washer	17	H-1800	3/32 x 3/8" Roll Pin
7	F-1015-15	5/16-18 x 1" Capscrew	18	H-1926	1/4"x1" Handle Grip
8	F-1022-26	10-32 x 5/8" MachineScrew	19	H-2206	Brake Link Rod
9	F-1125	5/16-18 Stover Nut	20	H-2426	.372 x 3.69 Spring
10	F-1448	10-32 Nyloc Locknut	31	F-1491	1" COTTER PIN

MOTOR MOUNT ASSEMBLY



Parts List			Parts List		
ITEM	PART NUMBER	DESCRIPTION	ITEM	PART NUMBER	DESCRIPTION
1	659-085P	Mounting Pin	15	F-1015-27	3/8-16 x 1-1/2" Capscrew
3	700-107W	WLDT, MOTOR MOUNT	16	F-1486	3/8-16 Jam Nut
4	700-145P	SPRING ANCHOR, BOLT	17	F-1521	1/2" WASHER, CUSTOM
5	707-011W	WLDT, IDLER ARM	18	F-2063	Nut, 5/16-18 Nyloc, Flanged
6	707-022P	SPACER, 3/8X1-1/4, .500	19	F-2120	FHCS, 5/16-18 x 0.75, YZ, GR5
7	707-033P	CLUTCH STOP	20	F-2151	Nut, 3/8-16 Nyloc, Flanged
9	D-3730	Flanged Bushing 5/8" Bore	21	F-2152	Nut, 1/2-13 Nyloc, Flanged
10	D-3922	PULLEY, FLT IDLER, SINGLE INSERT	22	F-2154	FHCS, 1/2-13 x 1-3/4", YZ, GR5
11	E-5842	Wire Tie	23	F-2180	FHCS, 3/8-16 x 3", YZ, GR5
12	F-1005-03	3/8-16 Stover Nut	26	H-2619	SPRING, 5 X 1-1/2, TAPERED ENDS
13	F-1005-05	1/2-13 Stover Nut	27	P-12918	DECAL, HYDRO BELT ROUTING
14	F-1009-03	3/8" Flat Washer			

MOTORS AND TRANSAXLE



Transaxle Parts List		
ITEM	PART NUMBER	DESCRIPTION
1	659-120P	Hydro Brace
2	D-3783-01	Transaxle 7" Fan RH
3	D-3783-02	Transaxle 7" Fan LH
4	F-1009-03	3/8" Flat Washer
5	F-2048	3/8-16 x 12" Hex Bolt
6	F-2151	Nut, 3/8-16 Nyloc, Flanged

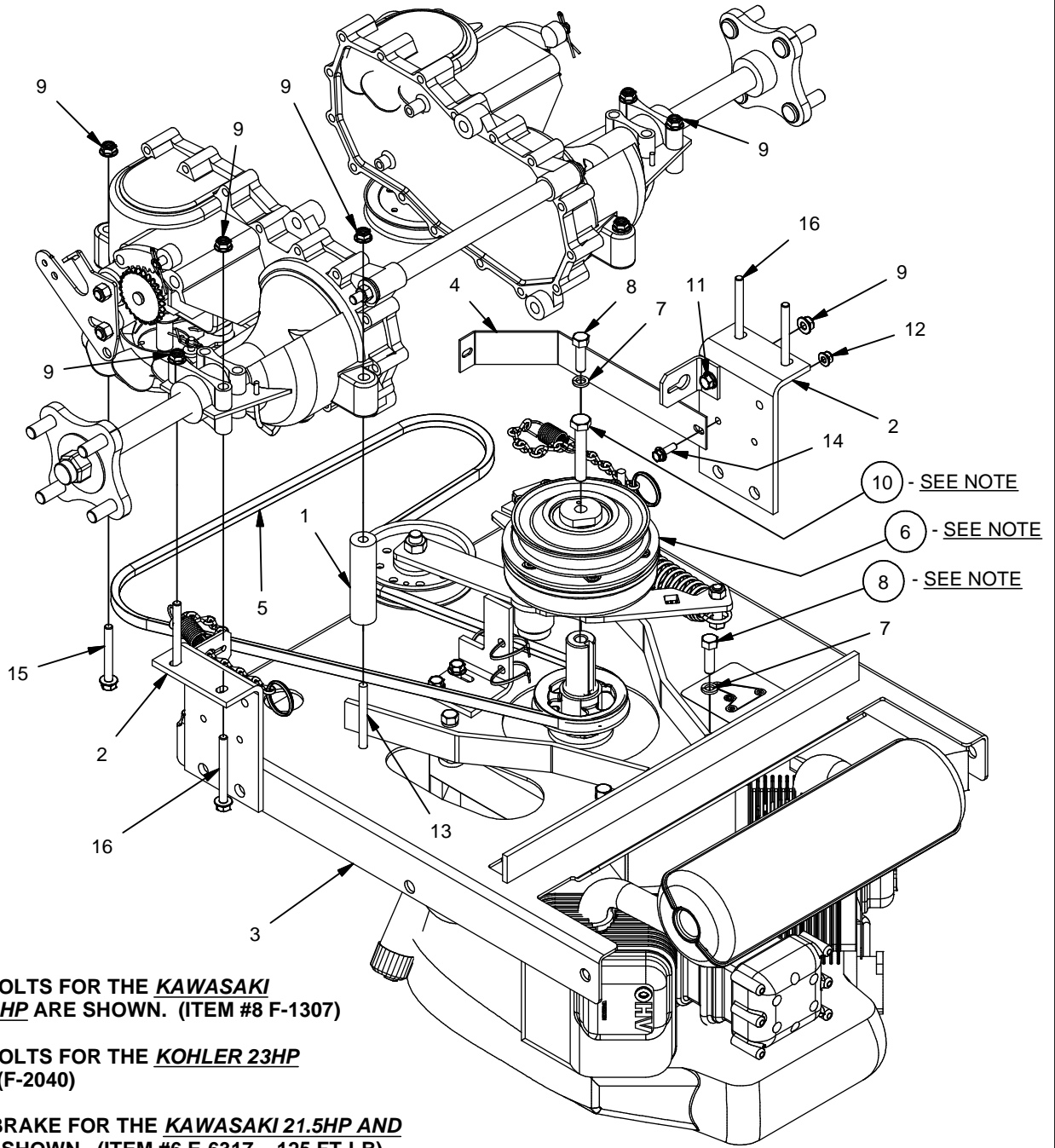
Motor Parts List		
ITEM	PART NUMBER	DESCRIPTION
1 *	621-113P	1/4"sq x 1-1/4" Key
2 *	D-3726	Engine Pulley 3.75"
3	E-6307	Oil Pressure Switch
4 *	F-1228	1/4-20 x 1/4" Set Screw W/Nylon Patch
5	H-2589	Oil Drian Valve
6	H-2590	Oil Drain Valve
7	H-2750	MUFFLER, KAW TWIN, LOW MOUNT
8	H-2751	MUFFLER, KOHLER TWIN, LOW MOUNT
9	H-2905	MUFFLER, KAW 18HP
10	M-5393	ENGINE, KAWASAKI 21.5HP, FR651V TWIN
11	M-5402	ENGINE, KAWASAKI 18HP, FR600V
12	M-5403	ENGINE, KOHLER 23HP, KT730
13	P-10077-11	"Clean Debris" decal

NOTE:

THE FOLLOWING ARE USED ON ALL 3 ENGINE TYPES:

- ITEM #1 * 621-113P - 1/4 SQ X 1-1/4 KEY
- ITEM #2 * D-3726 - ENGINE PULLEY 3.75
- ITEM #4 * F-1228 - 1/4-20 X 14 SET SCREW

MOTOR & TRANSAXLE ASSEMBLY



NOTE:

THE ENGINE BOLTS FOR THE KAWASAKI 21.5HP AND 18HP ARE SHOWN. (ITEM #8 F-1307)

THE ENGINE BOLTS FOR THE KOHLER 23HP NOT SHOWN. (F-2040)

THE CLUTCH/BRAKE FOR THE KAWASAKI 21.5HP AND KOHLER 23HP SHOWN. (ITEM #6 E-6317... 125 FT-LB)

THE CLUTCH BRAKE FOR THE KAWASAKI 18HP NOT SHOWN. (E-6543... 105 FT-LB)

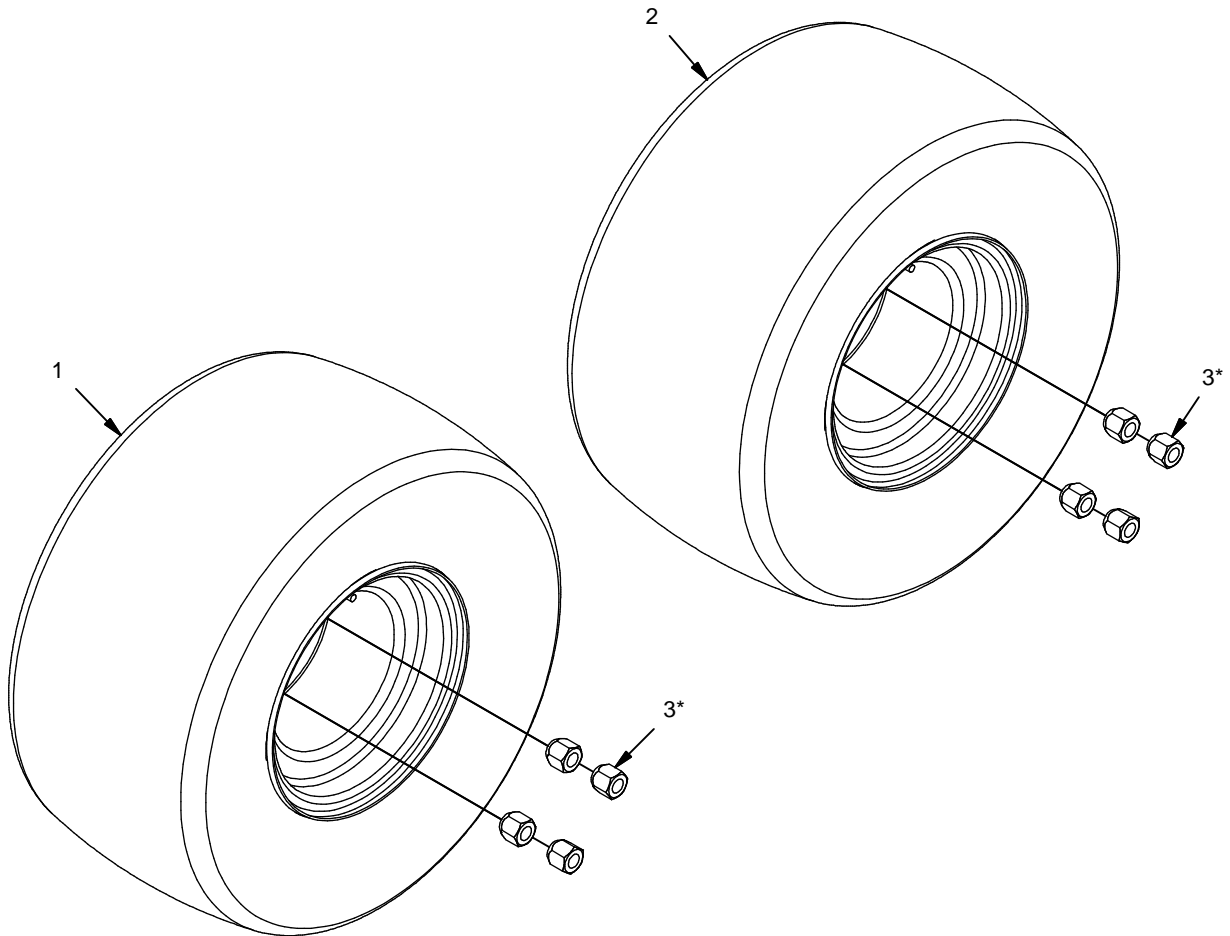
ITEM #10 NOTE:

CLUTCH BOLT TORQUE SPECIFICATION = 55 FT-LB

Parts List			Parts List		
ITEM	PART NUMBER	DESCRIPTION	ITEM	PART NUMBER	DESCRIPTION
1	659-121P	SPACER, REAR HYDRO	--	F-2040	3/8-16 X 1-1/2 THREAD FORMING
2	659-350P	HYDRO MOUNT BRACKET	9	F-2063	Nut, 5/16-18 Nyloc, Flanged
3	700-107W	WLDT, MOTOR MOUNT	10	F-2113	Capscrew, 7/16-20x2-1/2", GR8, PLATED
4	707-061P	FAN SHROUD	11	F-2120	FHCS, 5/16-18 x 0.75, YZ, GR5
5	D-3885	V-BELT, A-64, RAW EDGE	12	F-2132	NUT, 1/4-20 NYLOC, FLANGED
6	E-6317	Clutch/Brake 1" Bore 125 FT-LB	13	F-2145	HHCS, 5/16-18 x 6", YZ, GR8
--	E-6543	Clutch/Brake 1" Bore 105 FT-LB	14	F-2162	FHCS, 1/4-20 x 3/4", GR5, YZ
7	F-1019-03	3/8" LOCKWASHER	15	F-2177	FHCS, 5/16-18 x 2-1/2", YZ, GR5
8	F-1307	3/8-16 x 1-1/4" Capscrew	16	F-2178	FHCS, 5/16-18 x 3", YZ, GR5

REAR WHEEL ASSEMBLIES

USED ON TRACTORS WITH A 48" AND 52" DECK.

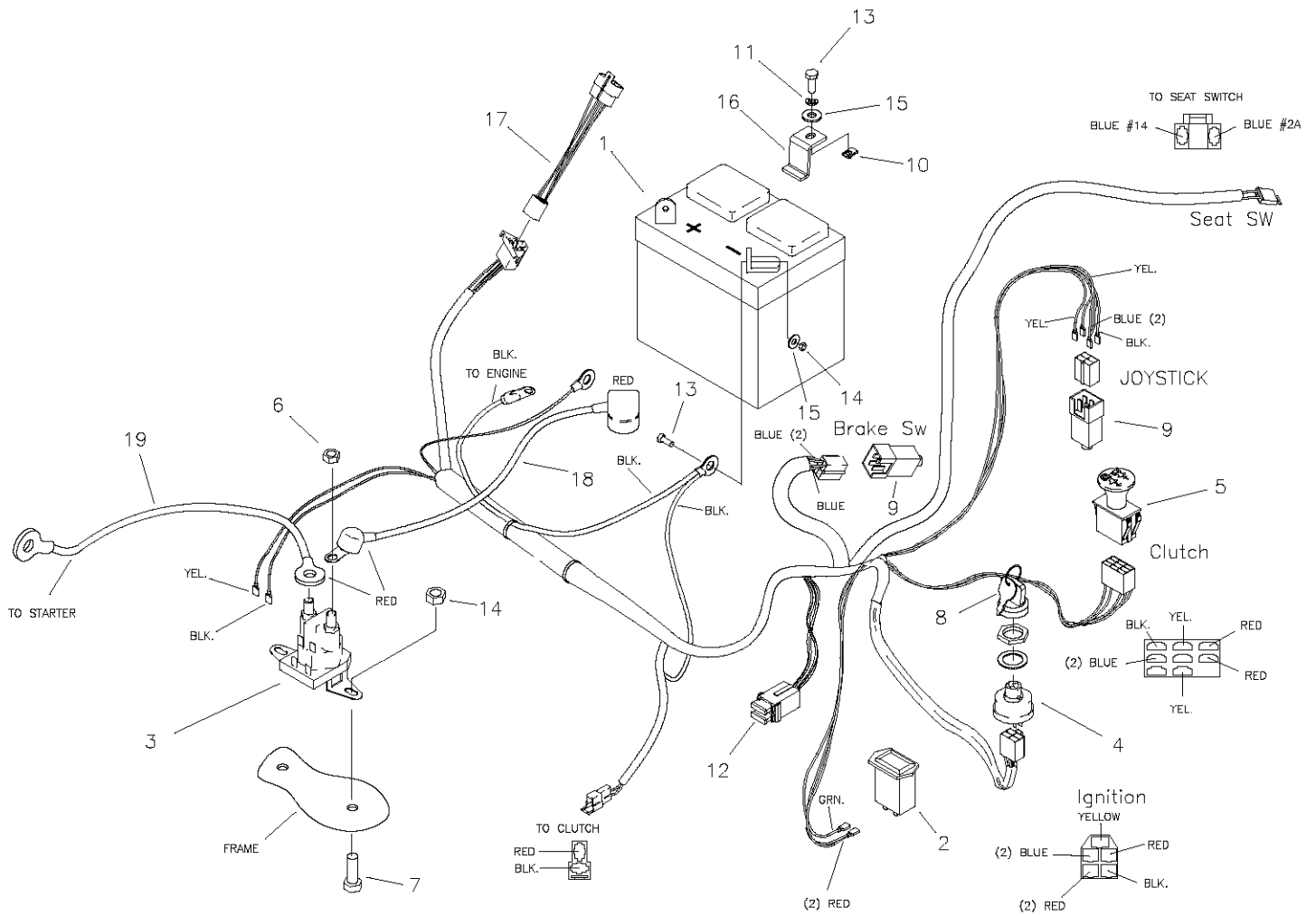


USED ONLY ON TRACTORS WITH A 41" DECK.

* ITEM #3 TORQUE SPECIFICATION = 75 FT-LB

Parts List		
ITEM	PART NUMBER	DESCRIPTION
1	D-3729	ASSY, 18 X 8.5-8 TIRE & RIM
2	D-3870	ASSY, 18 X 9.50-8, TIRE & .91 OFF-SET RIM
3*	F-1499	1/2-20 Lug Nut

WIRE HARNESS & BATTERY FOR KOHLER 23HP ENGINE



* ITEMS NOT SHOWN

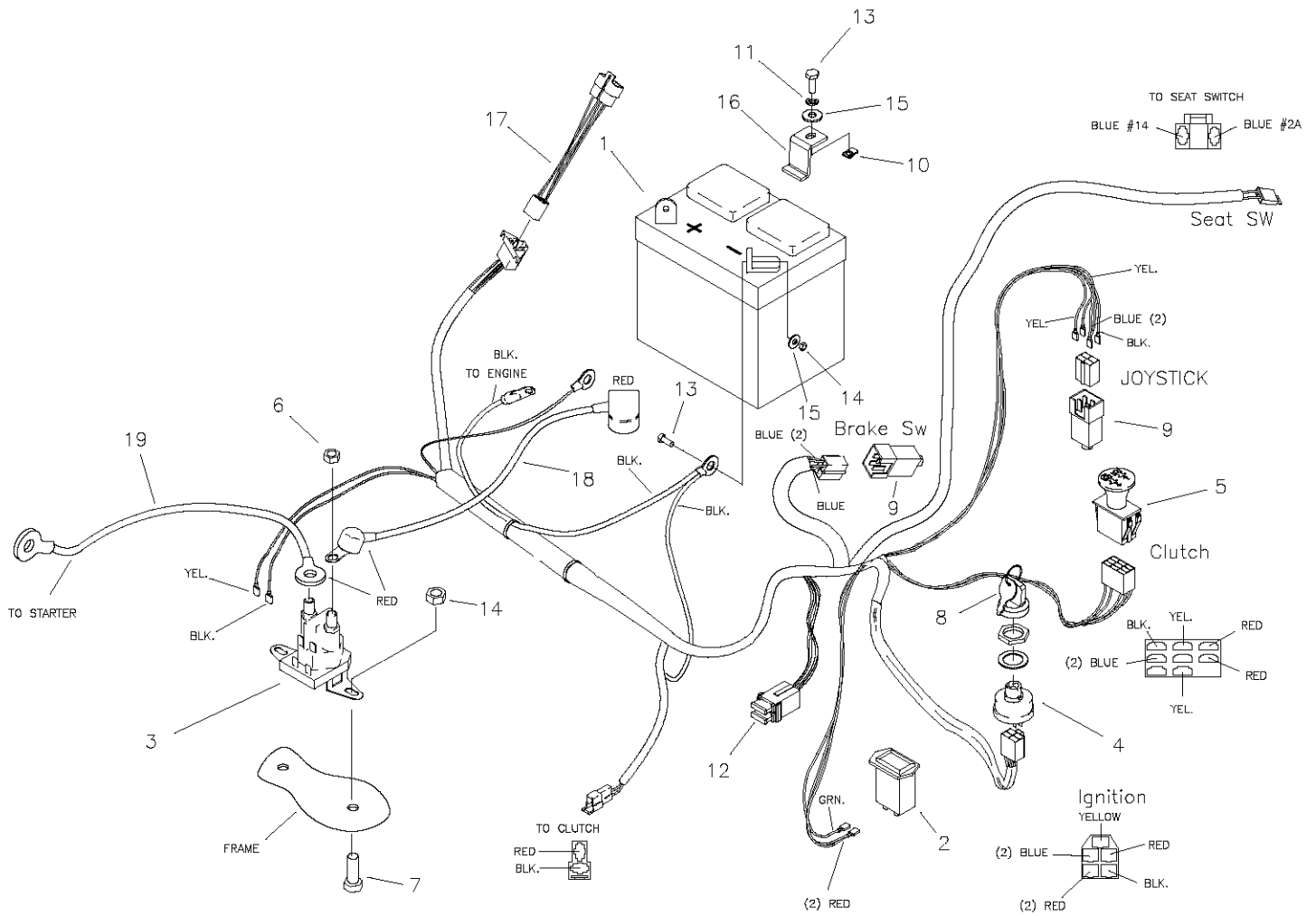
- E-6374 - SEAT SWITCH
- E-6281 - KEY SWITCH
- H-2404 - CHOKE CABLE
- H-2610 - THROTTLE CABLE

* QUICK REFERENCE

- E-6415 - WIRE HARNESS
- E-6436 - WIRE HARNESS ADAPTER
- E-6418 - CABLE, BATTERY TO SOLENOID
- E-6419 - CABLE, SOLENOID TO ENGINE

Parts List			Parts List		
ITEM	PART NUMBER	DESCRIPTION	ITEM	PART NUMBER	DESCRIPTION
1	E-5812	BATTERY	11	F-1019-01	1/4 LOCK WASHER
2	E-5878	HOUR METER	12	E-6207	FUSE, #ATC-30
3	E-6054	SOLENOID	13	F-1538	1/4-20 X 3/4 CAP SCREW
4	E-5873	START SWITCH	14	F-1158	1/4-20 LOCK NUT
5	E-6403	CLUTCH SWITCH	15	F-1009-01	1/4 FLAT WASHER
6	F-1011-01	1/4-20 NUT	16	659-137P	BATTERY HOLD DOWN
7	F-1015-02	1/4-20 X 5/8 CAP SCREW	17	E-6436	WIRE HARNESS ADAPTER
8	E-6445	KEY, SET	18	E-6418	CABLE, BATTERY TO SOLENOID
9	E-6297	BRAKE SWITCH	19	E-6419	CABLE, SOLENOID TO ENGINE
10	F-1858	1/4-20 U-NUT			

WIRE HARNESS & BATTERY FOR KAWASAKI 18HP AND 21.5 ENGINE



* ITEMS NOT SHOWN

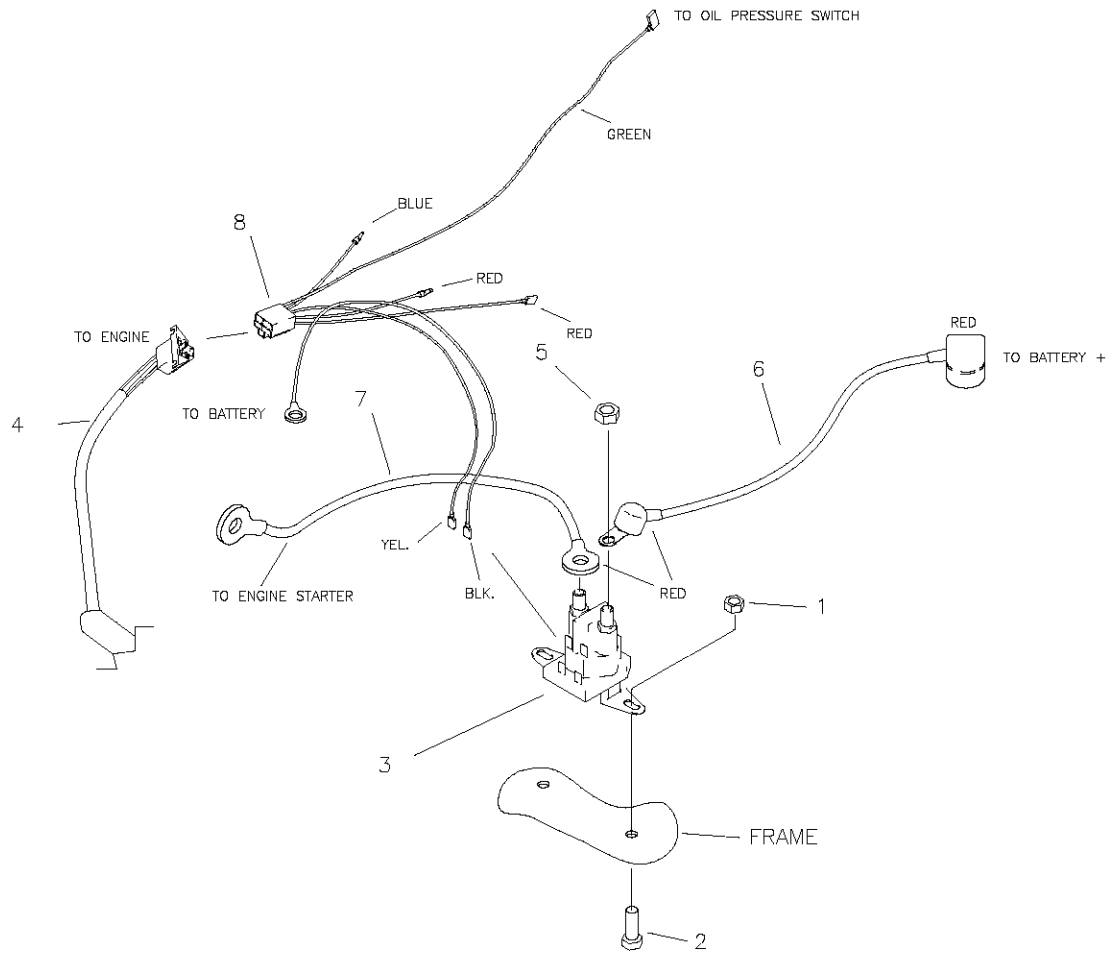
E-6374 - SEAT SWITCH
 E-6281 - KEY SWITCH
 H-2287 - CHOKE CABLE
 H-2610 - THROTTLE CABLE

* QUICK REFERENCE

E-6415 - WIRE HARNESS
 E-6417 - WIRE HARNESS ADAPTER
 E-6418 - CABLE, BATTERY TO SOLENOID
 E-6419 - CABLE, SOLENOID TO ENGINE

Parts List			Parts List		
ITEM	PART NUMBER	DESCRIPTION	ITEM	PART NUMBER	DESCRIPTION
1	E-5812	BATTERY	11	F-1019-01	1/4 LOCK WASHER
2	E-5878	HOUR METER	12	E-6207	FUSE, #ATC-30
3	E-6054	SOLENOID	13	F-1538	1/4-20 X 3/4 CAP SCREW
4	E-5873	START SWITCH	14	F-1158	1/4-20 LOCK NUT
5	E-6403	CLUTCH SWITCH	15	F-1009-01	1/4 FLAT WASHER
6	F-1011-01	1/4-20 NUT	16	659-137P	BATTERY HOLD DOWN
7	F-1015-02	1/4-20 X 5/8 CAP SCREW	17	E-6417	WIRE HARNESS ADAPTER
8	E-6445	KEY, SET	18	E-6418	CABLE, BATTERY TO SOLENOID
9	E-6297	BRAKE SWITCH	19	E-6419	CABLE, SOLENOID TO ENGINE
10	F-1858	1/4-20 U-NUT			

WIRE HARNESS ADAPTER (E-6417) FOR KAWASAKI 18HP AND 21.5HP ENGINE



Parts List

ITEM	PART NUMBER	DESCRIPTION
1	F-1158	1/4-20 LOCK NUT
2	F-1015-02	1/4-20 X 5/8 CAP SCREW
3	E-6054	SOLENOID
4	E-6415	WIRE HARNESS - JOYSTICK
5	F-1011-01	1/4-20 NUT
6	E-6418	CABLE, BATTERY TO SOLENOID
7	E-6419	CABLE, SOLENOID TO ENGINE
8	E-6417	KAWASAKI HARNESS ADAPTER

Repair Parts Manual



WRANGLER

140