

Repair Parts Manual



Zero Turn Radius Mower

EDGE[™]

405

EDGE[™] XLT[™]

450

Congratulations for buying a **Country Clipper** product. Your **Country Clipper** Zero Turn Radius Riding Mower was designed and built to provide long and trouble free service. Keep in mind that it, like any other mechanical device, can be potentially dangerous if used improperly, and hazard control and accident prevention are dependent upon the awareness, concern, prudence, and proper training of personnel involved in the operation, transport, maintenance, and storage of the equipment. Study this manual and pay special attention to the important Safety Precautions on pages 3-5. Following these instructions will help you continue to enjoy the trouble-free performance expected of the **Country Clipper** product.

COUNTRY CLIPPER EDGE-405 & EDGE XLT-450 ZERO TURN RADIUS MOWER

TABLE OF CONTENTS

SECTION 1 – MOWER DECKS AND RELATED PARTS

1. 48" DECK ASSEMBLY
2. 52" DECK ASSEMBLY
3. 60" DECK ASSEMBLY
4. DECK SPINDLE ASSEMBLY
5. DOUBLE IDLER & RELATED PARTS (48" & 60" DECKS)
6. DOUBLE IDLER & RELATED PARTS (52" DECK)
7. STATIONARY IDLERS & RELATED PARTS
8. LIFT HANDLE ASSEMBLY & RELATED PARTS
9. LIFT ASSEMBLY & RELATED PARTS
10. TRANSMISSION IDLERS & RELATED PARTS

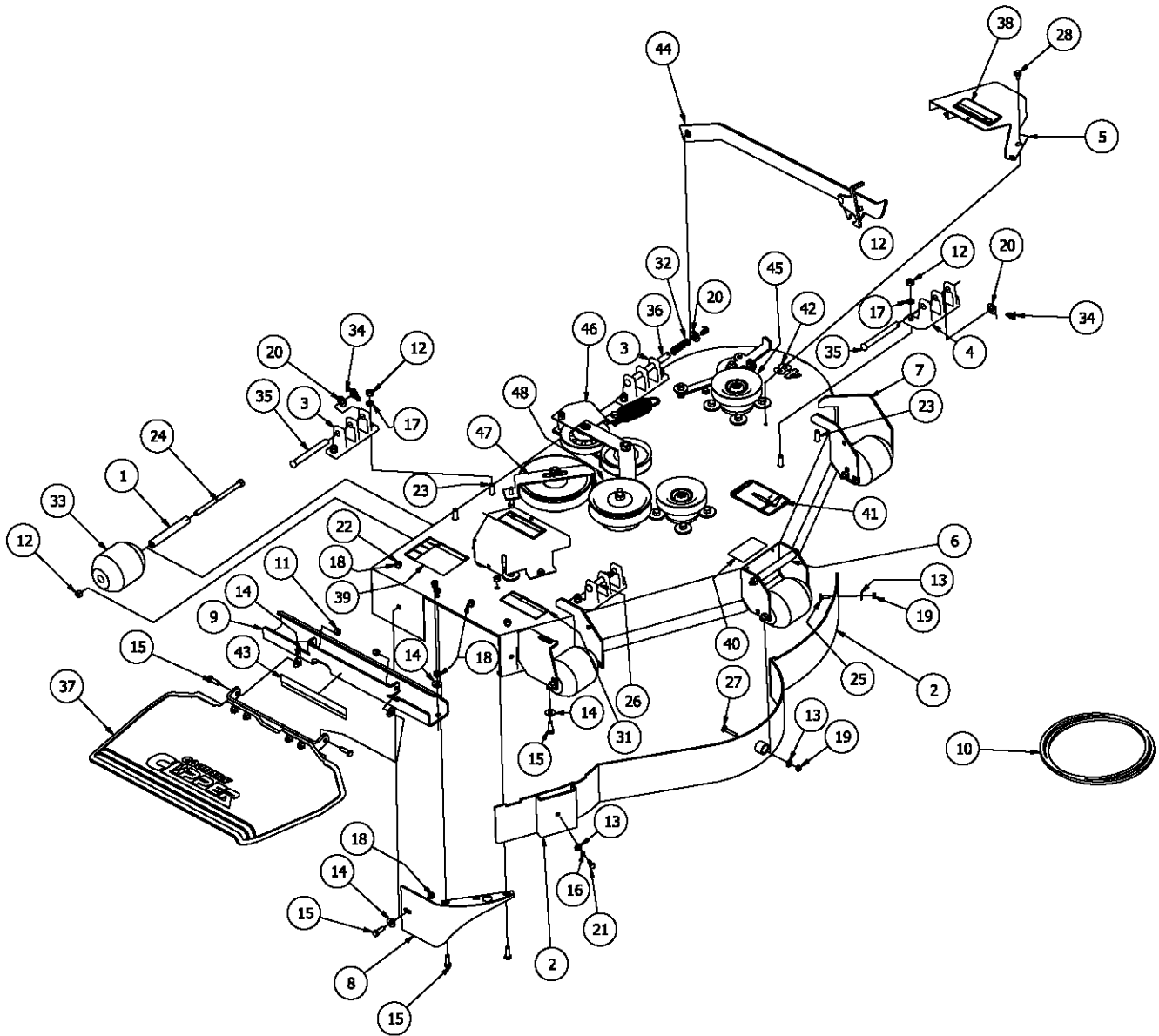
SECTION 2 – TRACTOR FRAME AND RELATED PARTS

11. CASTER WHEEL ASSEMBLY
12. FRAME SIDES & RELATED PARTS - EDGE
13. FRAME SIDES & RELATED PARTS - EDGE XLT
14. FENDER ASSEMBLY
15. SEAT, FOOT DECK ASSEMBLY & RELATED PARTS
16. FRONT STEP ASSEMBLY - EDGE XLT

SECTION 3 – TRACTOR DRIVE AND RELATED PARTS

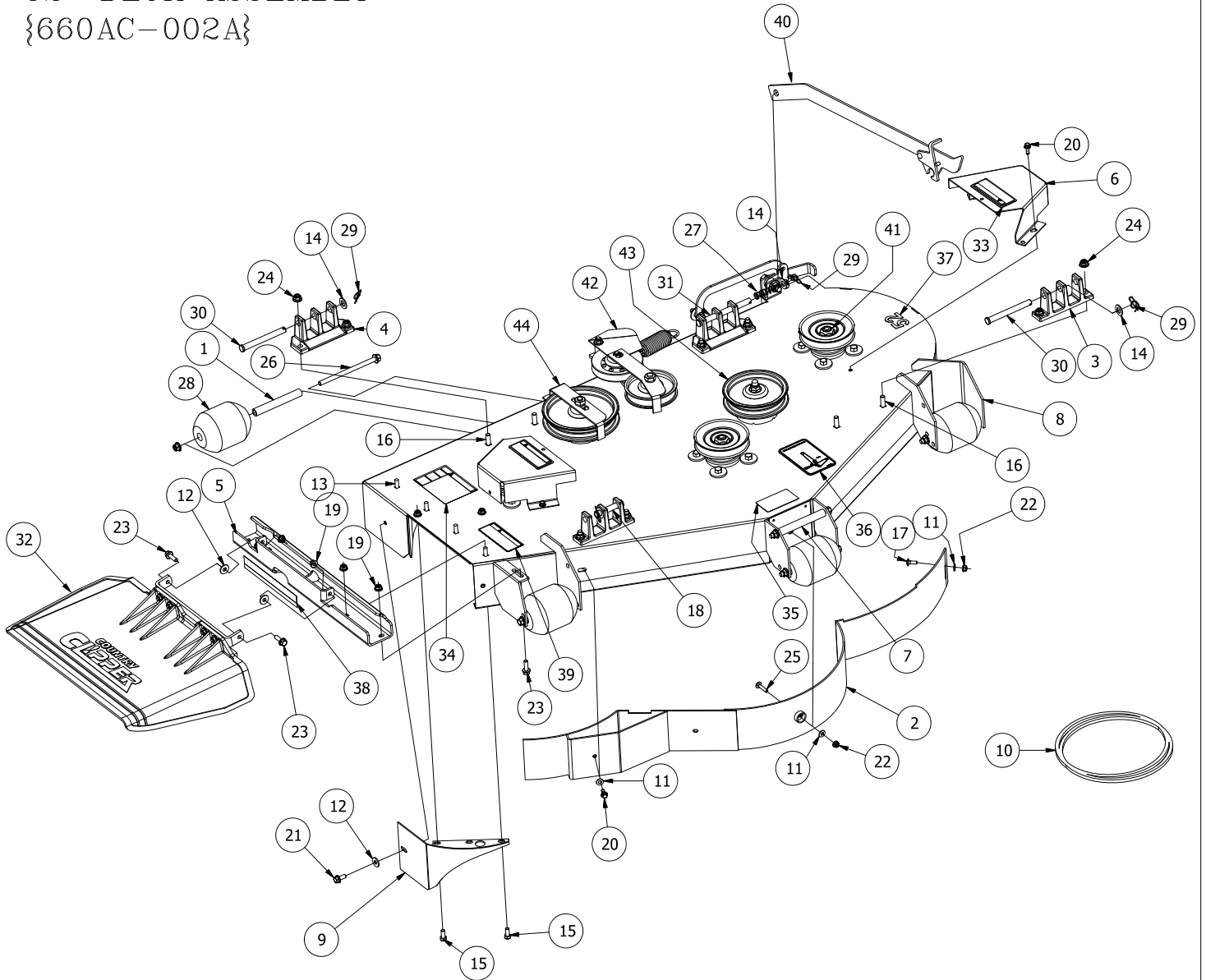
17. FUEL TANK ASSEMBLY
18. JOYSTICK STEERING CONTROL & RELATED PARTS
19. JOYSTICK ASSEMBLY (CON'T)
20. JOYSTICK STEERING CONTROL & RELATED PARTS (CON'T)
21. TWIN STICK STEERING CONTROL & RELATED PART
22. PARKING BRAKE ASSEMBLY & RELATED PARTS
23. MOTOR & TRANSMISSION ASS'Y & RELATED PARTS - 21.5HP KAWASAKI
24. MOTOR & TRANSMISSION ASS'Y & RELATED PARTS - 24HP KAWASAKI
25. E-6415 WIRE HARNESS ASS'Y & RELATED PARTS - KAWASAKI ENGINES (JOYSTICK)
26. E-6416 WIRE HARNESS ASS'Y & RELATED PARTS - KAWASAKI ENGINES (TWINSTICK)
27. E-6417 WIRE HARNESS ADAPTER & RELATED PARTS - KAWASAKI

48" DECK ASSEMBLY {660AB-002A}



REF NO.	PART NO.	QTY.	DESCRIPTION	REF NO.	PART NO.	QTY.	DESCRIPTION
1	609-183P	5	BUSHING	26	F-1898	1	1/2 x 2-3/4" Clevis Pin
2	629-241W	1	Baffle Wldt. 48"	27	F-1935	1	CARRIAGE BOLT, 1/4 X 1-1/2"
3	643-016W	2	Hanger Weldment	28	F-2030	4	1/4 x 5/8 Self Tapping Capscrew
4	651-009W	2	CASTING,HANGER,WIDE BASE	29	F-2063	4	Nut, 5/16-18 Nyloc, Flanged
5	660-146A	2	PULLEY COVER w/DECALS	30	F-2066	4	5/16-18 x 1" CARRIAGE BOLT,
6	660-162P	1	GRIP, STANDUP	31	P-12706	1	WARNING DECAL, DISCHARGE CHUTE
7	660-175A	1	48" LIGHT DECK w/DECALS	32	F-2575	1	SPRING, COMP .656 X .052 X 1.97
8	686-080W	1	SPLITTER BAFFLE	33	H-1948	5	Roller, 3-3/4 DIA. x 4-13/16L
9	700-076P	1	OUTLET STIFFENER	34	H-2239	4	1/2" Rue Ring
10	D-3775-W	1	BELT, B-158	35	H-2240	2	1/2" x 4-1/2" Clevis Pin
11	F-1005-02	2	5/16-18 Nyloc Nut	36	H-2718	1	1/2" x 5-1/2" Clevis Pin
12	F-1005-03	22	3/8-16 Stover Nut	37	643-111A	1	Chute, Discharge, Small
13	F-1009-01	3	1/4" Flat Washer	38	P-10935	2	Decal, WARNING
14	F-1009-02	5	5/16" Flat Washer	39	P-10941	1	DECAL "DANGER ROTATING BLADES"
15	F-1015-15	6	5/16-18 x 1" Capscrew	40	P-11413	1	DECAL, HOIST POINT
16	F-1019-01	1	1/4" LockWasher	41	P-11932	1	DECAL, JAZEE DECK BELT ROUTING
17	F-1019-03	20	3/8" LOCKWASHER	42	P-11950	1	DECAL, DECK SIZE, 48
18	F-1125	9	5/16-18 Stover Nut	43	P-12496	1	DECAL, MISSING CHUTE
19	F-1158	2	1/4-20 Stover Nut	44	625-114A	1	DECK PROP ASS'Y, EDGE XLT
20	F-1521	9	1/2" WASHER, CUSTOM	44	625-115A	1	DECK PROP ASS'Y, EDGE
21	F-1538	1	1/4-20 x 3/4" Capscrew	45	-----	3	SPINDLE ASS'Y (SEE pg.4)
22	F-1671	4	5/16-18 x 3/4" CARRIAGE BOLT	46	-----	1	DOUBLE IDLER ASS'Y (SEE pg.5)
23	F-1672	8	3/8-16 x 1-1/4" Carraige Bolt	47	-----	1	REAR IDLER ASS'Y (SEE pg.7)
24	F-1741	6	3/8-16 x 6" Capscrew	48	-----	1	FRONT IDLER ASS'Y (SEE pg.7)
25	F-1823	1	Carriage Bolt, 1/4 X 3/4"				

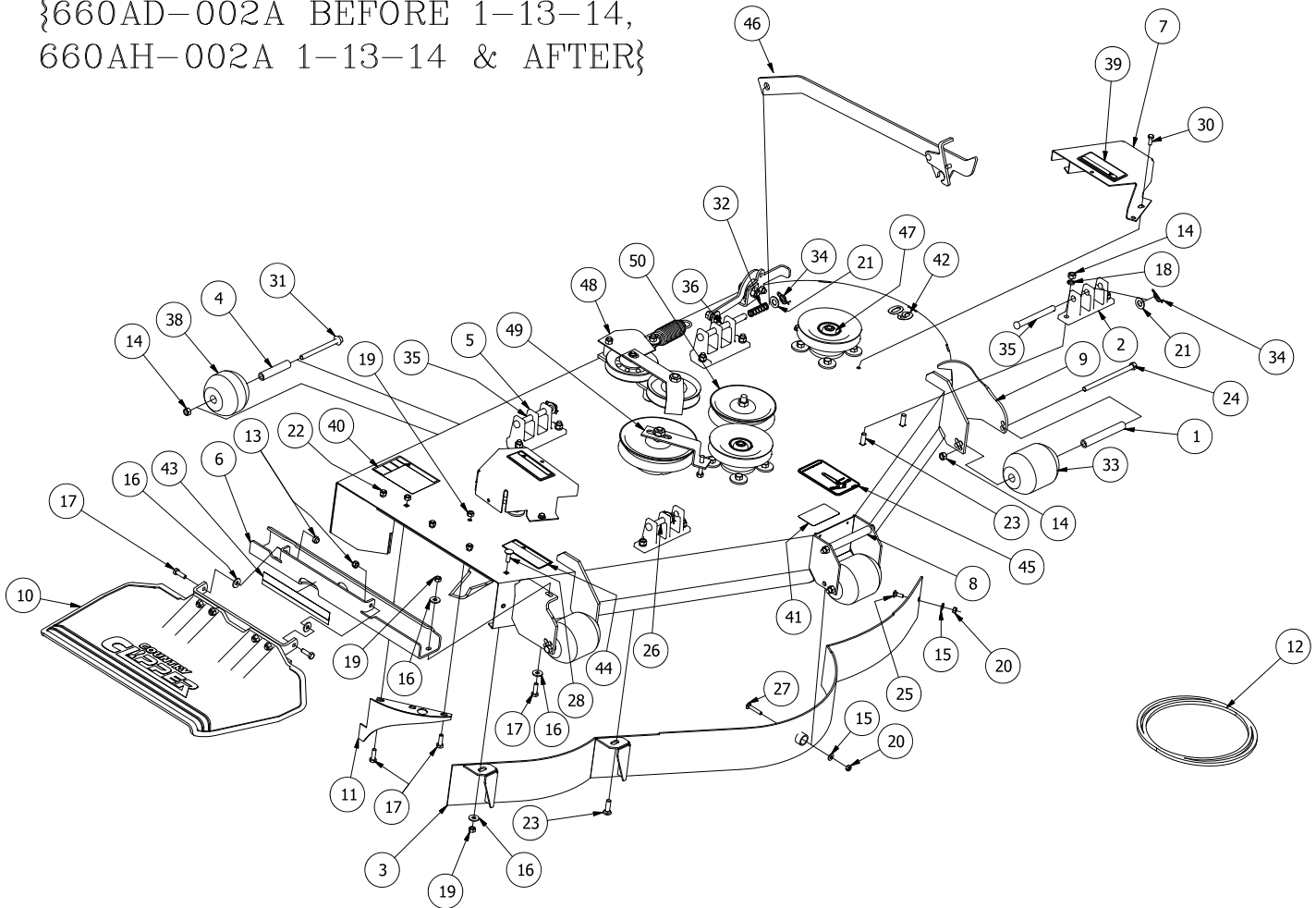
52" DECK ASSEMBLY {660AC-002A}



REF NO.	PART NO.	QTY.	DESCRIPTION	REF NO.	PART NO.	QTY.	DESCRIPTION
1	609-183P	5	BUSHING	24	F-2151	21	Nut, 3/8-16 Nyloc, Flanged
2	629-783W	1	WLDT,DUST BAFFLE,52",MEDIUM	25	F-2157	1	CARRIAGE BOLT, 1/4 X 1-1/4"
3	643-016W	2	Hanger Weldment	26	F-2161	6	FHCS, 3/8-16 x 6", YZ, GR5
4	651-009W	2	CASTING,HANGER,WIDE BASE	27	F-2575	1	SPRING, COMP .656 X .052 X 1.97
5	660-120P	1	OUTLET STIFFENER, SMALL	28	H-1948	5	Roller, 3-3/4 DIA. x 4-13/16L
6	660-146A	2	PULLEY COVER w/DECALS	29	H-2239	4	1/2" Rue Ring
7	660-162P	1	GRIP, STANDUP	30	H-2240	2	1/2" x 4-1/2" Clevis Pin
8	660-176A	1	52" LIGHT DECK w/DECALS	31	H-2718	1	1/2" x 5-1/2" Clevis Pin
9	686-080W	1	SPLITTER BAFFLE	32	643-111A	1	CHUTE ASS'Y
10	D-3776-W	1	BELT, B-180	33	P-10935	2	Decal, WARNING
11	F-1009-01	3	1/4" Flat Washer	34	P-10941	1	DECAL "DANGER ROTATING BLADES"
12	F-1009-02	3	5/16" Flat Washer	35	P-11413	1	DECAL, HOIST POINT
13	F-1269	4	5/16-18 x 1"CARRIAGE BOLT	36	P-11932	1	DECAL, JAZEE DECK BELT ROUTING
14	F-1521	6	1/2" WASHER, CUSTOM	37	P-11951	1	DECAL, DECK SIZE, 52
15	F-1546	2	5/16-18 x 3/4" Capscrew	38	P-12496	1	DECAL, MISSING CHUTE
16	F-1672	8	3/8-16 x 1-1/4" Carriage Bolt	39	P-12706	1	WARNING DECAL, DISCHARGE CHUTE
17	F-1823	1	Carriage Bolt, 1/4 X 3/4"	40	625-114A	1	DECK PROP ASS'Y EDGE XLT
18	F-1889	1	1/2 x 2-5/8" Clevis Pin	--	625-115A	1	DECK PROP ASS'Y EDGE
19	F-2063	15	Nut, 5/16-18 Nyloc, Flanged	41	-----	3	SPINDLE ASS'Y (SEE pg. 4)
20	F-2119	5	FHCS, 1/4-20 x 0.75, YZ, LOCK PATCH, GR5	42	-----	1	DOUBLE IDLER ASS'Y (SEE pg.6)
21	F-2120	1	FHCS, 5/16-18 x 0.75, YZ, GR5	43	-----	1	FRONT IDLER ASS'Y (SEE pg.7)
22	F-2132	2	NUT, 1/4-20 NYLOC, FLANGED	44	-----	1	REAR IDLER ASS'Y (SEE pg.7)
23	F-2148	3	FHCS, 5/16-18 x 1.00, YZ, GR5				

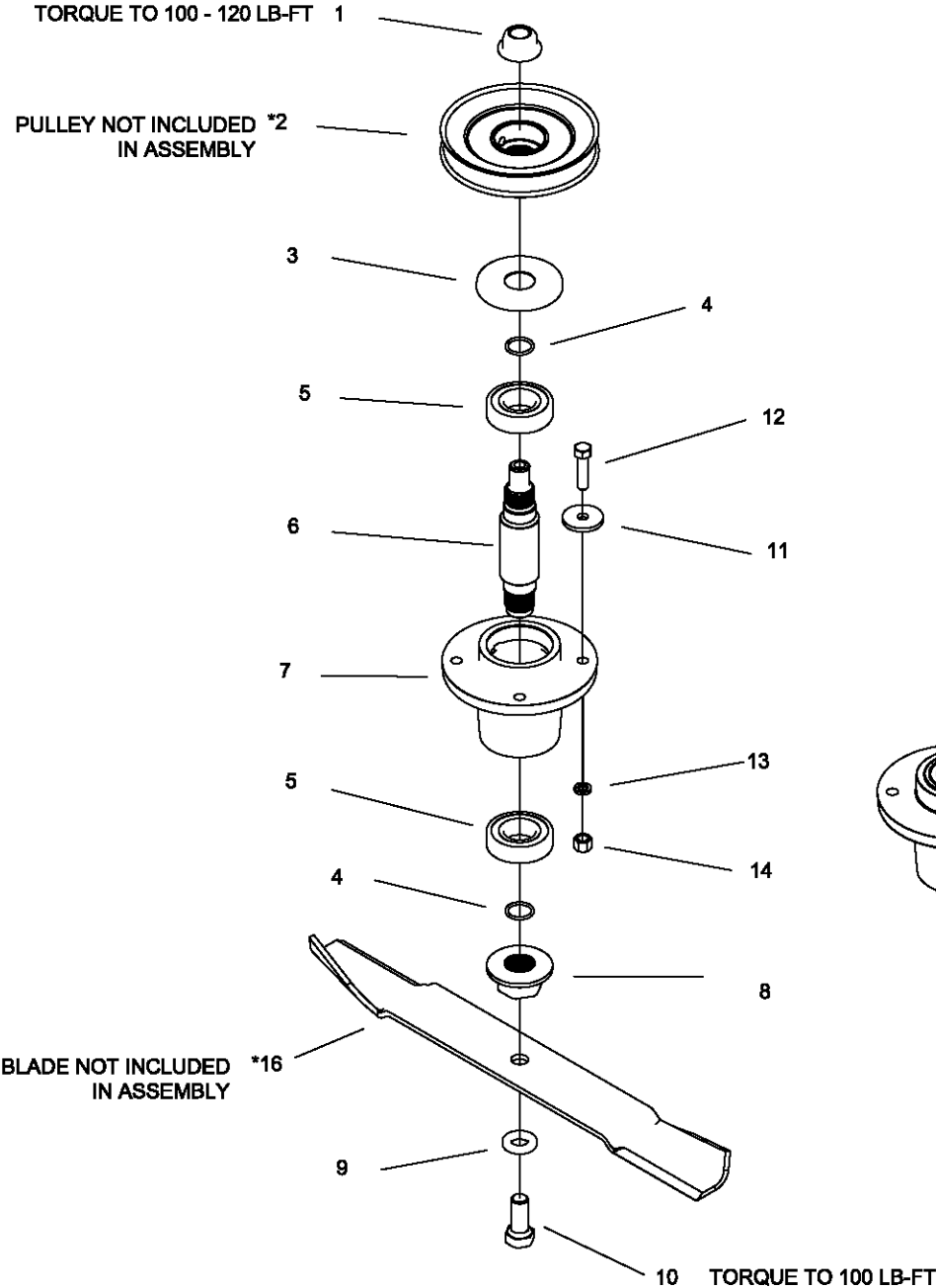
60" DECK ASSEMBLY

{660AD-002A BEFORE 1-13-14,
660AH-002A 1-13-14 & AFTER}



REF NO.	PART NO.	QTY.	DESCRIPTION	REF NO.	PART NO.	QTY.	DESCRIPTION
1	609-183P	3	BUSHING	26	F-1889	1	1/2 x 2-5/8" Clevis Pin
2	643-016W	2	Hanger Weldment	27	F-1935	1	CARRIAGE BOLT, 1/4 X 1-1/2"
3	643-104W	1	60" DUST BAFFLE WELDMENT	28	F-2066	5	5/16-18 x 1" CARRIAGE BOLT,
4	643-126P	2	BUSHING	29	F-2106	1	1/2-13 X 3-1/2" CARRIAGE BOLT
5	651-009W	2	CASTING,HANGER,WIDE BASE	30	F-2119	4	FHCS, 1/4-20x0.75, YZ, GR5 LOCK PATCH
6	660-120P	1	OUTLET STIFFENER, SMALL	31	F-2160	2	FHCS, 3/8-16 x 4 1/2", YZ, GR5
7	660-146A	2	PULLEY COVER w/DECALS	32	F-2575	1	SPRING, COMP .656 X .052 X 1.97
8	660-162P	1	GRIP, STANDUP	33	H-1948	3	Roller, 3-3/4 DIA. x 4-13/16L
9	660-177A	1	60" LIGHT DECK w/DECALS (BEFORE 1-13-14)	34	H-2239	4	1/2" Rue Ring
-	660-190A	1	60" LIGHT DECK w/DECALS (1-13-14 & AFTER)	35	H-2240	2	1/2" x 4-1/2" Clevis Pin
10	643-111A	1	CHUTE ASS'Y	36	H-2718	1	1/2" x 5-1/2" Clevis Pin
11	686-006W	1	SPLITTER BAFFLE	37	H-2723	1	Chute, Discharge, Small
12	D-3776-W	1	BELT, B-180	38	H-2772	2	Roller, 3-3/4 DIA. x 3 1/4"L
13	F-1005-02	2	5/16-18 Nyloc Nut	39	P-10935	2	Decal, WARNING
14	F-1005-03	23	3/8-16 Stover Nut	40	P-10941	1	DECAL "DANGER ROTATING BLADES"
15	F-1009-01	6	1/4" Flat Washer	41	P-11413	1	DECAL, HOIST POINT
16	F-1009-02	5	5/16" Flat Washer	42	P-11952	1	DECAL, DECK SIZE, 60
17	F-1015-15	5	5/16-18 x 1" Capscrew	43	P-12496	1	DECAL, MISSING CHUTE
18	F-1019-03	20	3/8" LOCKWASHER	44	P-12706	1	WARNING DECAL, DISCHARGE CHUTE
19	F-1125	8	5/16-18 Stover Nut	45	P-12837	1	DECAL, DECK BELT ROUTING
20	F-1158	2	1/4-20 Stover Nut	46	G25-114A	1	DECK PROP ASS'Y, EDGE XLT
21	F-1521	6	1/2" WASHER, CUSTOM	--	G25-115A	1	DECK PROP ASS'Y, EDGE
22	F-1671	3	5/16-18 x 3/4" CARRIAGE BOLT	47	-----	3	SPINDLE ASS'Y (SEE pg.4)
23	F-1672	8	3/8-16 x 1-1/4" Carriage Bolt	48	-----	1	DOUBLE IDLER ASS'Y (SEE pg.5)
24	F-2161	4	FHCS, 3/8-16 x 6", YZ, GR5	49	-----	1	REAR IDLER ASS'Y (SEE pg.7)
25	F-1823	1	Carriage Bolt, 1/4 X 3/4"	50	-----	1	FRONT IDLER ASS'Y (SEE pg.7)

DECK SPINDLE ASSEMBLY 629FN-001A

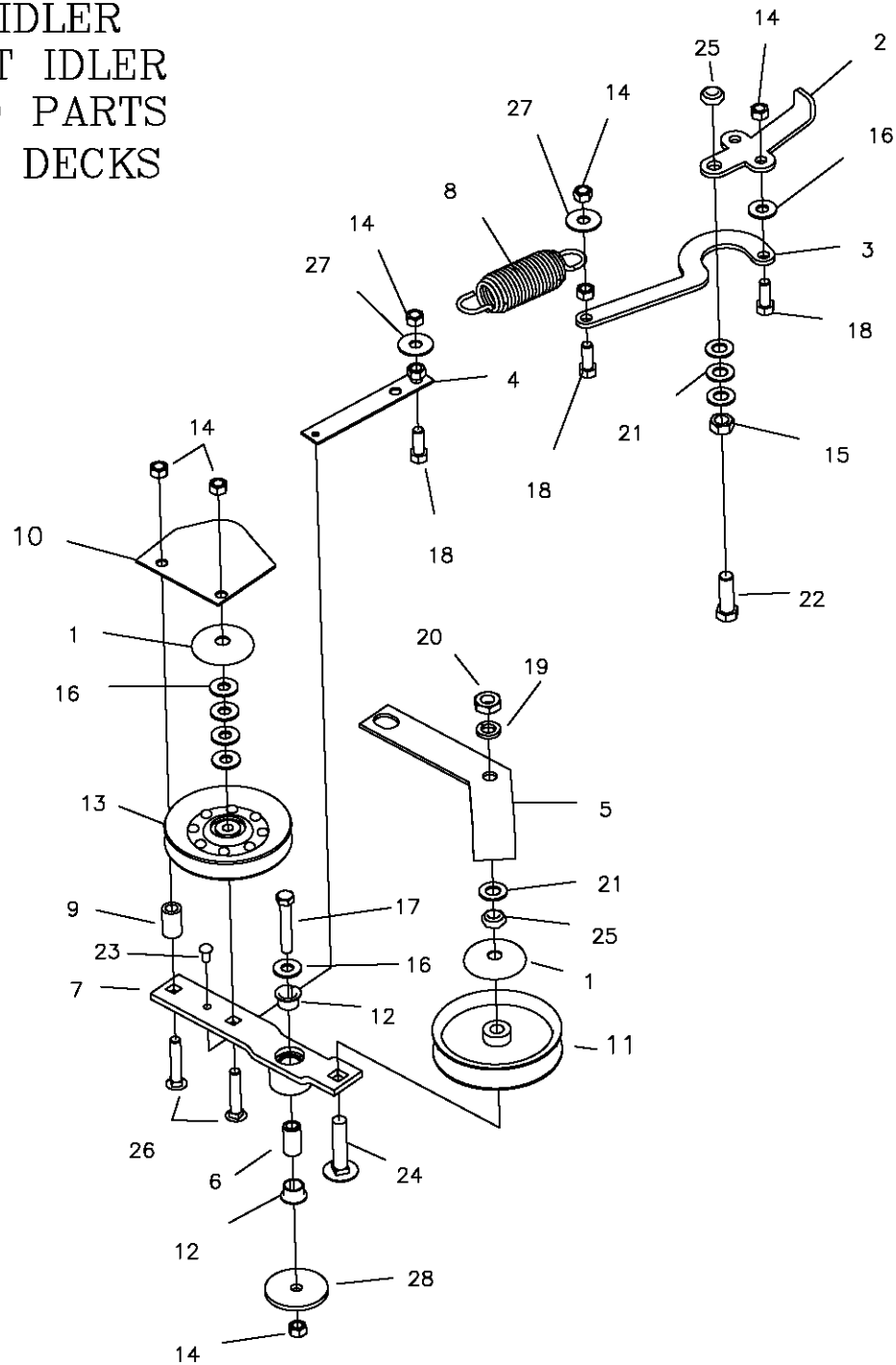


15 (APPLY THIN LAYER OF CHEVRON RYKOTAC GREASE TO THE TOP SURFACES OF THE BEARING AND HOUSING PRIOR TO INSTALLING ITEM #3 (BEARING CAP)).

NEW MOWERS ARE SHIPPED WITH 3 to 4 oz OF CHEVRON SRI NLGI 2 GREASE INSIDE EACH SPINDLE HOUSING.

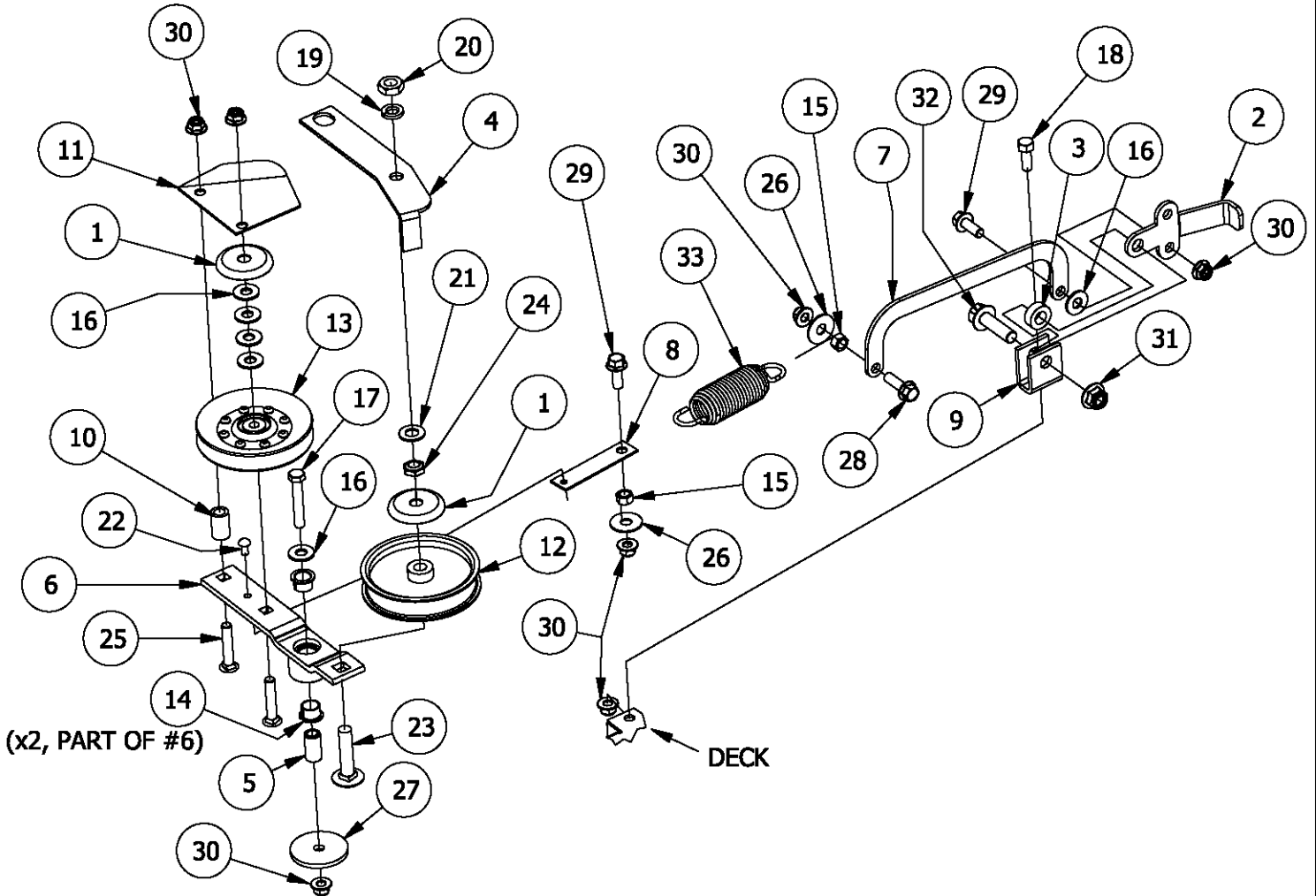
REF NO.	PART NO.	QTY.	DESCRIPTION	REF NO.	PART NO.	QTY.	DESCRIPTION
1	F-2078	1	3/4-6 TOP LOCK NUT	14	F-1573	4	3/8-24 LOCK NUT
2	668-037P	*	48" DECK PULLEY	15	H-2707	1	GREASE PACKET
*	668-038P	*	52" DECK PULLEY	16	H-2653	1	BLADE, HIGH L, 17" CUT 48"
*	668-039P	*	60" DECK PULLEY	-	H-2654	-	BLADE, HIGH L, 18 3/8" CUT 52"
3	609-292P	1	CAP, BEARING	-	H-2655	-	BLADE, HIGH L, 21" CUT 60"
4	H-2639	2	O'RING, RUBBER	OPTIONAL BLADES			
5	D-3867	2	BEARING, #6206	-	H-2659	-	BLADE, LOW L, 17" CUT 48"
6	609-289P	1	SHAFT, SPINDLE	-	H-2660	-	BLADE, LOW L, 18 3/8" CUT, 52"
7	609-285P	1	HOUSING, SPINDLE	-	H-2661	-	BLADE, LOW L, 21" CUT, 60"
8	609-288P	1	BLADE DRIVER	-	H-2665	-	BLADE, GATOR, 17" CUT 48"
9	660-099P	1	BLADE WASHER	-	H-2666	-	BLADE, GATOR, 18 3/8" CUT 52"
10	F-2073	1	5/8-11 X 1.5 HHCS GR. 8	-	H-2667	-	BLADE, GATOR, 21" CUT 60"
11	609-034P	4	SPINDLE SPACER, WASHER				
12	F-1572	4	3/8-24 X 1.5 CAP SCREW				
13	F-1019-03	4	3/8 LOCK WASHER				

DOUBLE IDLER DRIVE BELT IDLER & RELATED PARTS 48" & 60" DECKS



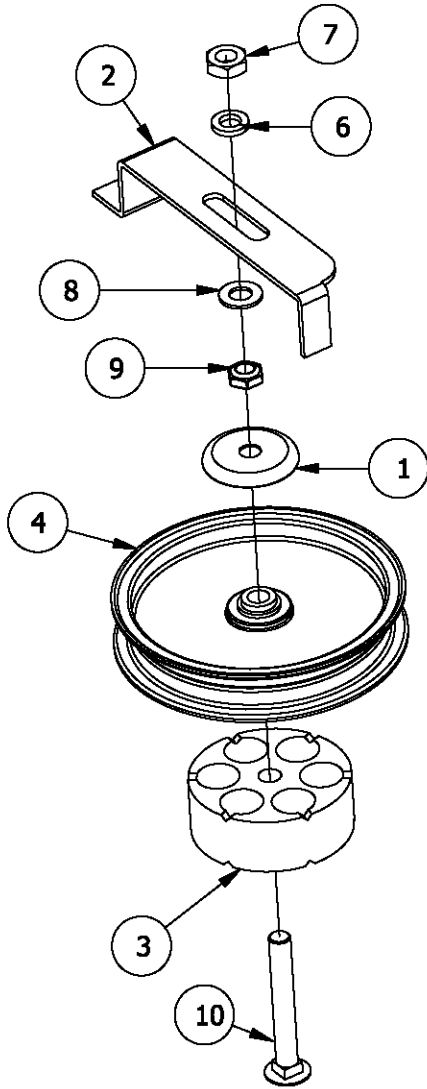
REF NO.	PART NO.	QTY.	DESCRIPTION	REF NO.	PART NO.	QTY.	DESCRIPTION
1	620-201P	4	WASHER, BEARING CAP	15	F-1005-05	2	1/2-13 Stover Nut
2	660-030P	1	Belt Tightner Handle	16	F-1009-03	6	3/8" Flat Washer
3	660-031P	1	Belt Tightner Arm	17	F-1268	1	3/8-16 x2-1/4" Capscrew
4	660-081P	1	EXTENSION FOR SPRING	18	F-1394	3	3/8-16 x 1" Capscrew
5	660-110P	1	BELT KEEPER, B BELT	19	F-1464	2	1/2" LOCKWASHER
6	660-135P	1	MOUNTING PIN	20	F-1489	2	1/2-13 Hex Jam Nut
7	660-138W	1	IDLER ARM WLDT, 1/2" OFFSET	21	F-1521	9	1/2" WASHER, CUSTOM
8	H-2619	1	SPRING, 5 X 1-1/2, TAPERED ENDS	22	F-1526	1	1/2-13 x1-1/2" Capscrew
9	668-021P	1	SPACER, BELT GUARD	23	F-1733	1	1/4" x 1/2" DRIVE SCREW
10	668-029P	1	BELT GUARD	24	F-1822	1	1/2-13 X 2-1/4" CARRIAGE BOLT
11	D-3338	1	Pulley flat idler 1/2" Bore 4"	25	F-1966	3	1/2-13 THIN NYLOC NUT
12	D-3730	2	Flanged Bushing 5/8" Bore	26	F-1976	2	3/8-16 x 2" Carraige Bolt
13	D-3758	1	PULLEY V-IDLER 4.48 O.D. 3/8 HOLE	27	F-2083	2	WASHER, 3/8 FENDER
14	F-1005-03	22	3/8-16 Stover Nut	28	F-2102	1	WASHER, 406ID X 2.250D X 7GA THK

DOUBLE IDLER DRIVE BELT IDLER & RELATED PARTS 52" DECK

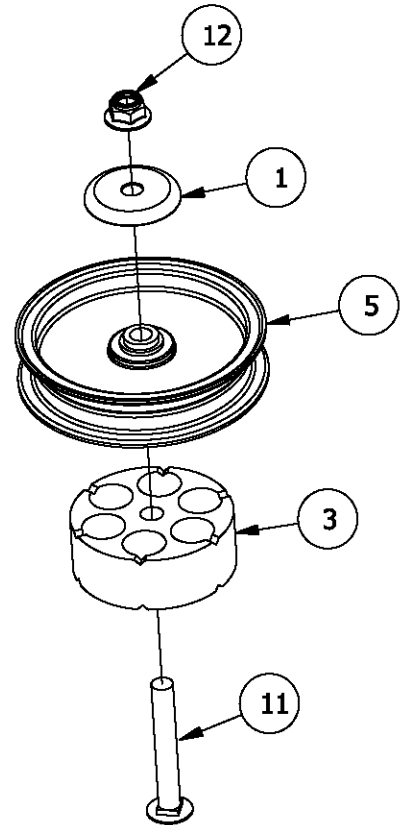


REF NO.	PART NO.	QTY.	DESCRIPTION	REF NO.	PART NO.	QTY.	DESCRIPTION
1	620-201P	4	WASHER, BEARING CAP	18	F-1394	1	3/8-16 x 1" Capscrew
2	660-030P	1	Belt Tightner Handle	19	F-1464	2	1/2" LOCKWASHER
3	660-038P	1	3/8" Spacer	20	F-1489	2	1/2-13 Hex Jam Nut
4	660-107P	1	BELT KEEPER	21	F-1521	1	1/4" x 1/2" DRIVE SCREW
5	660-135P	1	MOUNTING PIN	22	F-1733	1	1/2-13 X 2-1/4" CARRIAGE BOLT
6	660-147A	1	IDLER ARM ASSEMBLY	23	F-1822	2	1/2-13 THIN NYLOC NUT
7	660-172P	1	LINK, BELT TENSION	24	F-1966	2	3/8-16 x 2" Carriage Bolt
8	660-173P	1	SPRING EXTENSION	25	F-1976	2	WASHER, 3/8 FENDER
9	661-015P	1	SHACKLE	26	F-2083	1	WASHER.406ID X 2.25OD X 7GA THK
10	668-021P	1	SPACER, BELT GUARD	27	F-2102	1	FHCS, 3/8-16 x 1.25, YZ, GR5
11	668-029P	1	BELT GUARD	28	F-2125	2	FHCS, 3/8-16 x 1", YZ, GR5
12	D-3338	1	Pulley flat idler 1/2" Bore 4"	29	F-2141	2	Nut,3/8-16 Nyloc, Flanged
13	D-3758	1	PULLEY V-IDLER 4.48 O.D. 3/8 HOLE	30	F-2151	2	Nut,1/2-13 Nyloc, Flanged
14	D-3730	2	FLANGED BUSHING	31	F-2152	1	FHCS, 1/2-13 x1-3/4", YZ, GR5
15	F-1005-03	2	3/8-16 Stover Nut	32	F-2154	1	SPRING,5 X 1-1/2,TAPERED ENDS
16	F-1009-03	6	3/8" Flat Washer	33	H-2619	1	
17	F-1268	1	3/8-16 x2-1/4" Capscrew				

RIGHT REAR STATIONARY IDLER ASSEMBLY

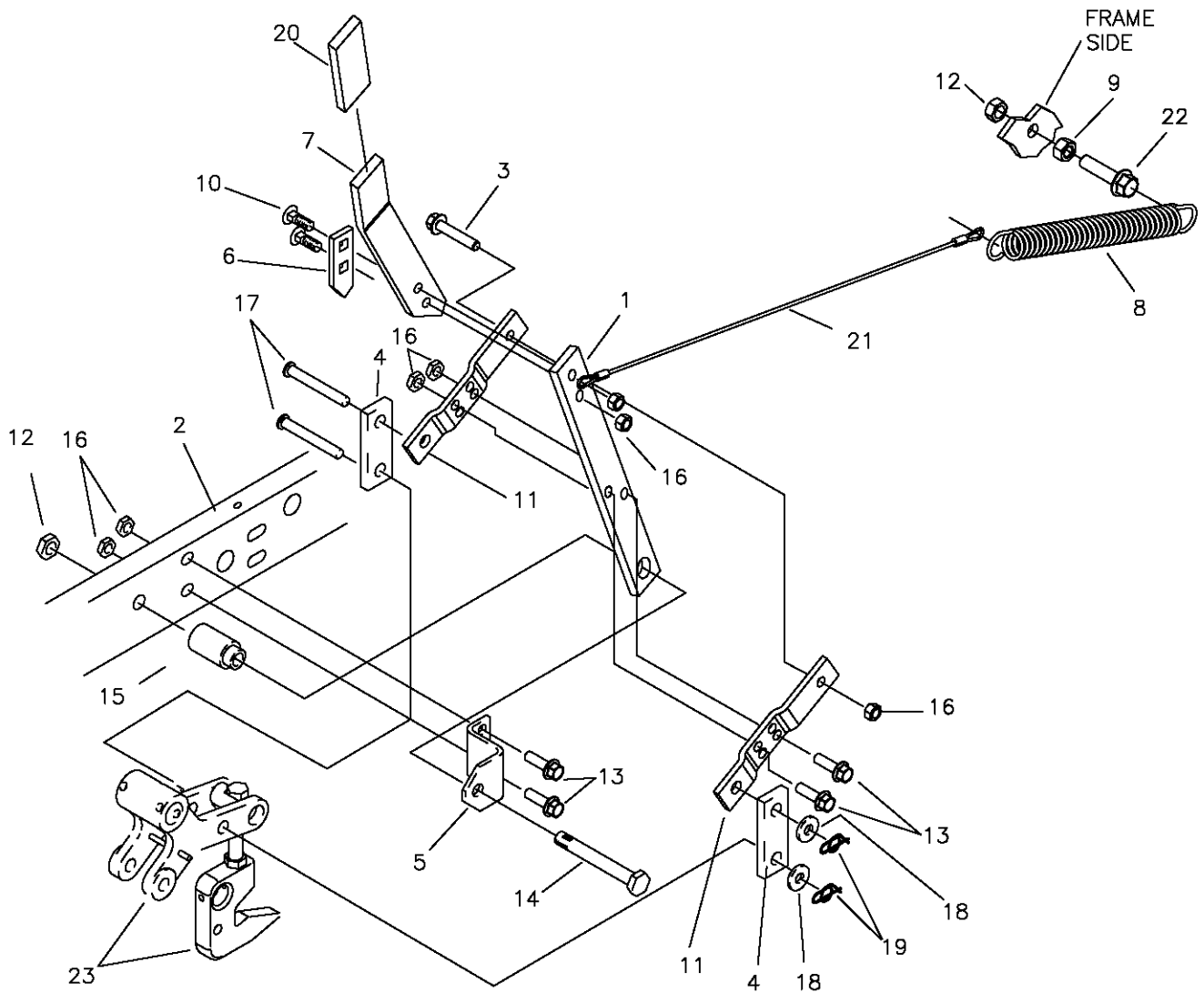


FRONT STATIONARY IDLER ASSEMBLY



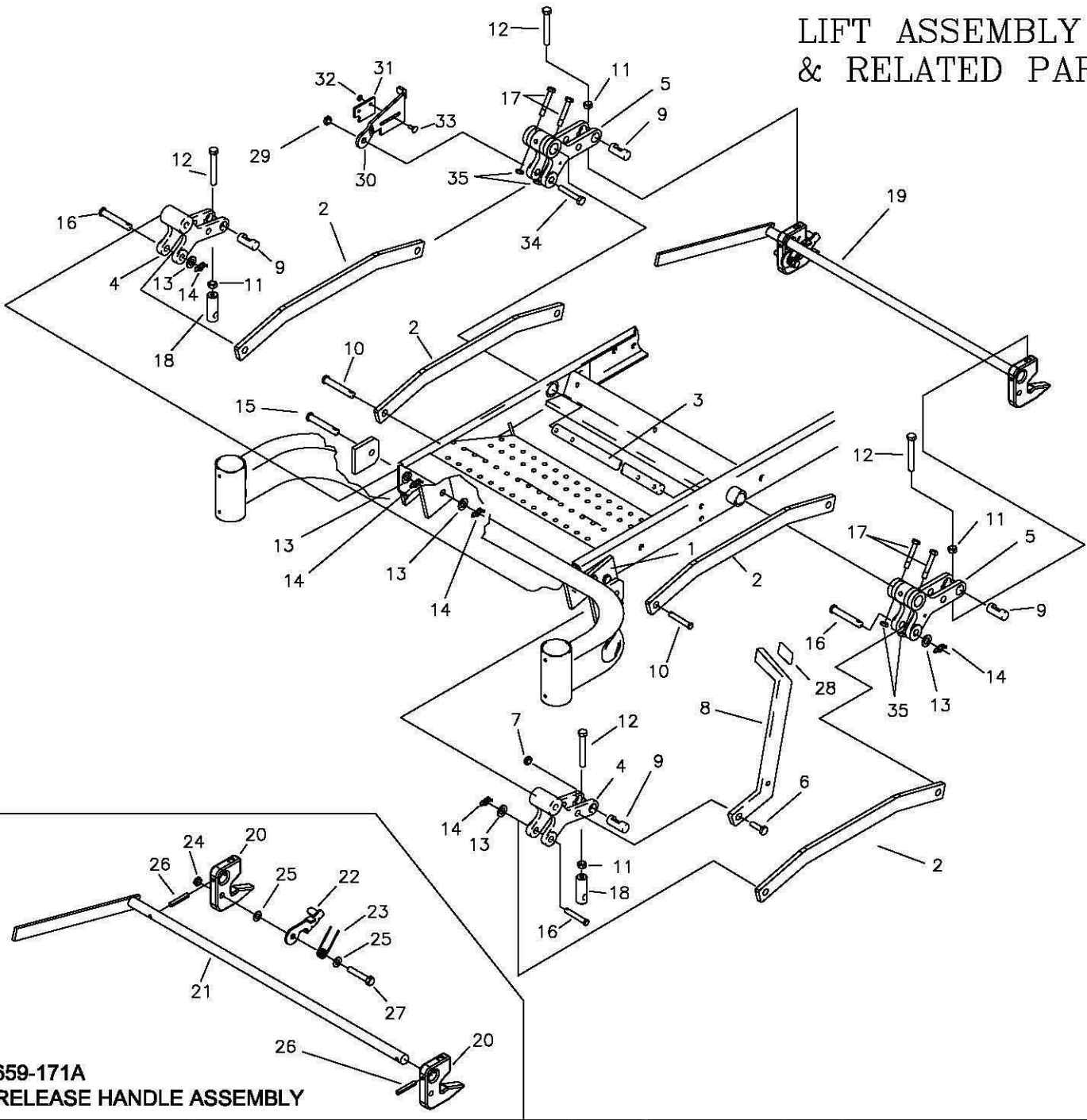
REF NO.	PART NO.	QTY.	DESCRIPTION	REF NO.	PART NO.	QTY.	DESCRIPTION
1	620-201P	4	WASHER, BEARING CAP	7	F-1489	2	1/2-13 Hex Jam Nut
2	660-112P	1	BELT KEEPER	8	F-1521	6	1/2" WASHER, CUSTOM
3	660-148P	2	SPACER, IDLER MOUNT	9	F-1966	2	1/2-13 THIN NYLOC NUT
4	D-3903	1	PULLEY, FLAT IDLER, 6"	10	F-2079	1	CARRIAGE BOLT 1/2-13 X 3-3/4"
5	D-3904	1	PULLEY, FLAT IDLER, 5"	11	F-2106	1	1/2-13 X 3-1/2" CARRIAGE BOLT
6	F-1464	2	1/2" LOCKWASHER	12	F-2152	2	Nut, 1/2-13 Nyloc, Flanged

LIFT HANDLE ASSEMBLY & RELATED PARTS



REF NO.	PART NO.	QTY.	DESCRIPTION	REF NO.	PART NO.	QTY.	DESCRIPTION
1	709-102P	1	LIFT HANDLE, LOWER	15	642-095P	1	HANDLE PIVOT PIN
2	659-022W	1	FRAME WELDMENT, LH.	16	F-1005-03	7	NUT, 3/8-16 LOCKNUT (STOVER)
3	F-2126	1	3/8-16 X 2" CAPSCREW	17	F-1889	2	CLEVIS PIN, 1/2 X 2 5/8"
4	642-061P	2	HANDLE LINK	18	F-1521	2	1/2" FLAT WASHER
5	642-041P	1	HANDLE PIVOT BRACKET	19	H-2239	2	RUE RING, 1/2"
6	642-127P	1	TOP PEG LATCH PLATE	20	H-2324	1	VINYL GRIP, 3/8 X 1 1/2"
7	659-355P	1	LIFY HANDLE, UPPER	21	H-2460	1	SPRING EXTENSION CABLE
8	H-1610	1	SPRING, 1 1/2" OD. X 8"	22	F-2128	1	FHCS 1/2-13 X 2" GR. 5
9	F-1462	1	NUT, 1/2-20 JAM	23	-----	-	SEE PAGE 7
10	F-1672	2	CARRIAGE BOLT, 3/8-16 X 1 1/4"				
11	642-060P	2	SPRING ANCHOR PLATE				
12	F-1005-05	2	NUT, 1/2-13 LOCKNUT				
13	F-2125	4	1/2-13 X 1 1/4" GR. 5				
14	F-1439	1	1/2-13 X 3" GR. 5				

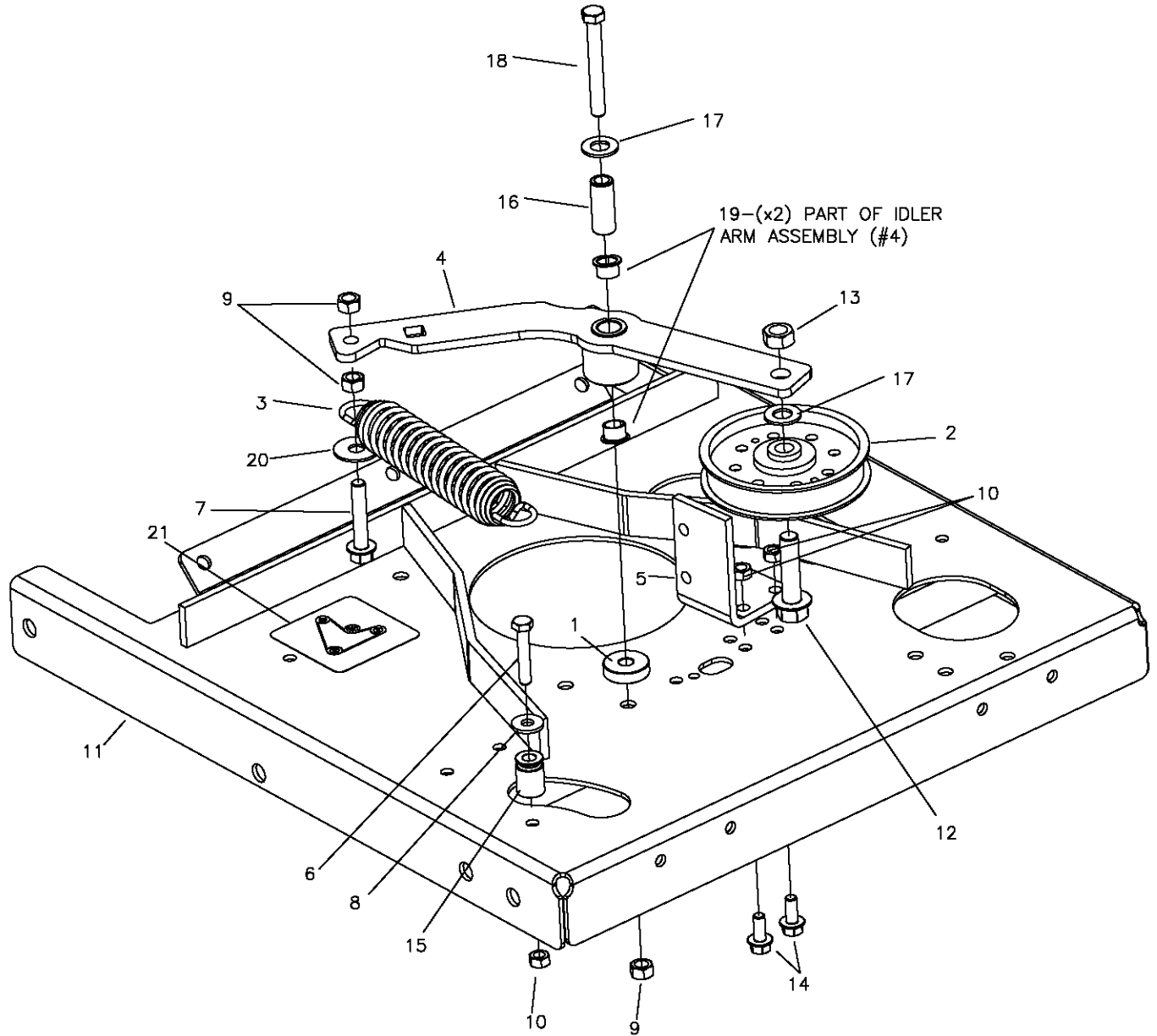
LIFT ASSEMBLY & RELATED PARTS



**659-171A
RELEASE HANDLE ASSEMBLY**

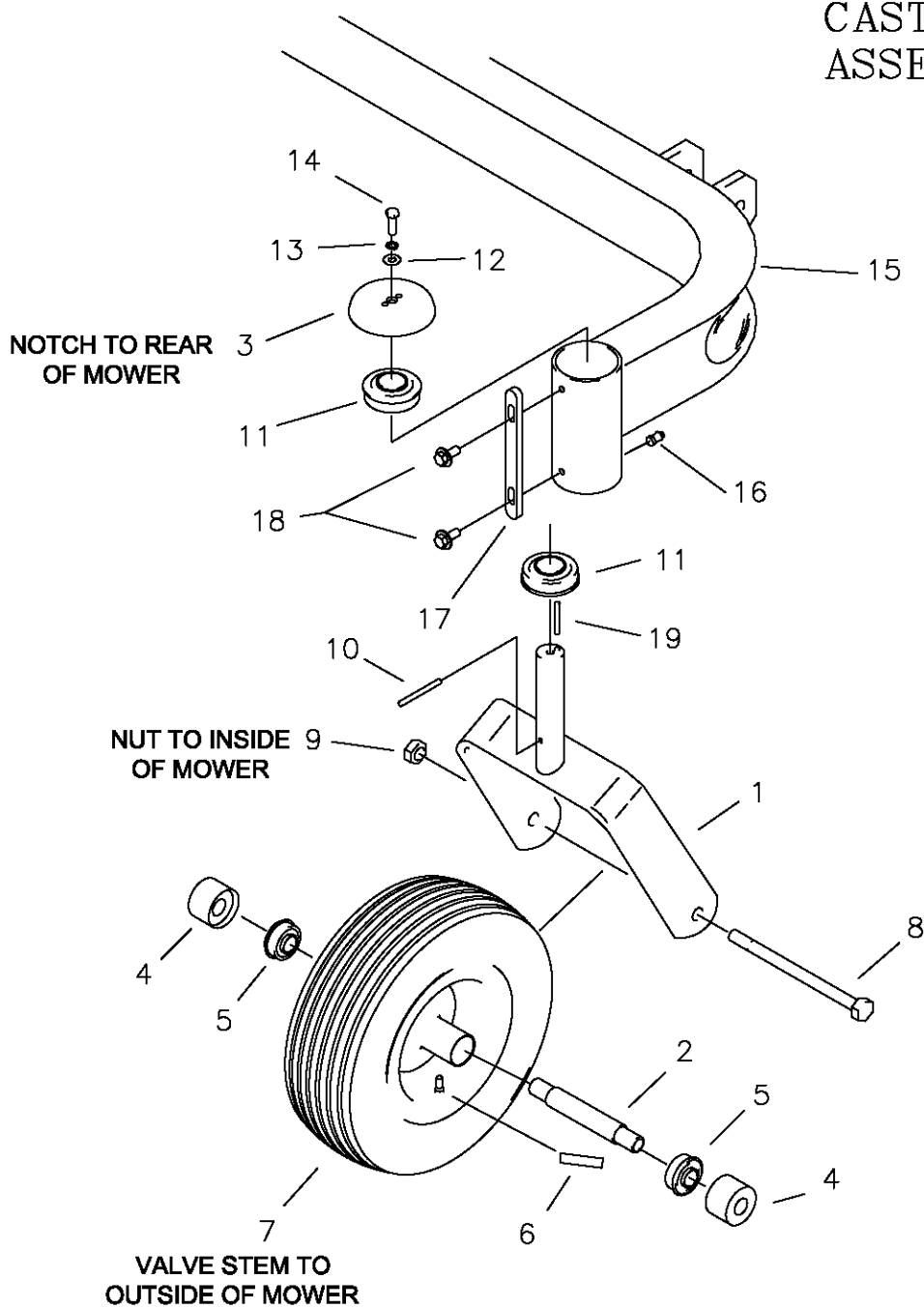
ITEM #	PART #	QTY	DESCRIPTION	ITEM #	PART #	QTY	DESCRIPTION
1	642-063P	2	DRAG BAR TAB	19	659-171A	1	RELEASE HANDLE ASSEMBLY
2	659-299P	4	DRAG LINK BAR	20	659-140P	2	DECK HOOK
3	620-051P	1	LIFT BAR	21	659-148W	1	RELEASE HANDLE WELDMENT
4	642-081P	2	LIFT SLEEVE, FRONT	22	659-145P	1	HOOK KEEPER
5	642-193P	2	LIFT SLEEVE, REAR	23	H-2547	1	SPRING, TORSION
6	F-1879	1	5/16-18 X 1 1/4" GR.5	24	F-1005-03	1	NUT, 3/8-16, STOVER
7	F-1125	1	5/16-18 STOVER NUT	25	F-1009-03	2	WASHER, FLAT, 3/8"
8	659-056P	1	DECK LIFT PEDAL	26	F-2009	2	SPIROL ROLL PIN 1/4 X 1-1/2
9	642-177P	4	HANGER PIN	27	F-1073	1	CAPSCREW, 3/8-16 X 2, GR. 5
10	F-1815	2	CLEVIS PIN, 1/2 X 1 1/4"	28	H-2401	1	TREAD PAD
11	F-1489	4	NUT, 1/2" JAM	29	F-1005-05	1	1/2" STOVER NUT
12	F-1936	4	1/2-13 X 3 1/2, 2" THREAD	30	659-146P	1	LATCH PLATE
13	F-1521	8	WASHER, 1/2 NARROW	31	659-170P	1	PLATE, CATCH
14	H-2239	8	RUE RING, 1/2"	32	F-1158	2	NUT, 1/4" STOVER
15	H-2240	2	CLEVIS PIN, 1/2 X 4 1/2"	33	F-1823	2	CARRIAGE BOLT, 1/4-20 X 3/4"
16	F-1898	3	CLEVIS PIN, 1/2 X 2 3/4"	34	F-1828	1	1/2-13 x 3-1/2" CAPSCREW
17	F-2039	4	5/16-24 x 2" HHCS	35	F-2041	4	5/16-24 JAM NUT
18	642-175P	2	ADJUSTABLE HANGER END				

TRANSMISSION IDLERS & RELATED PARTS



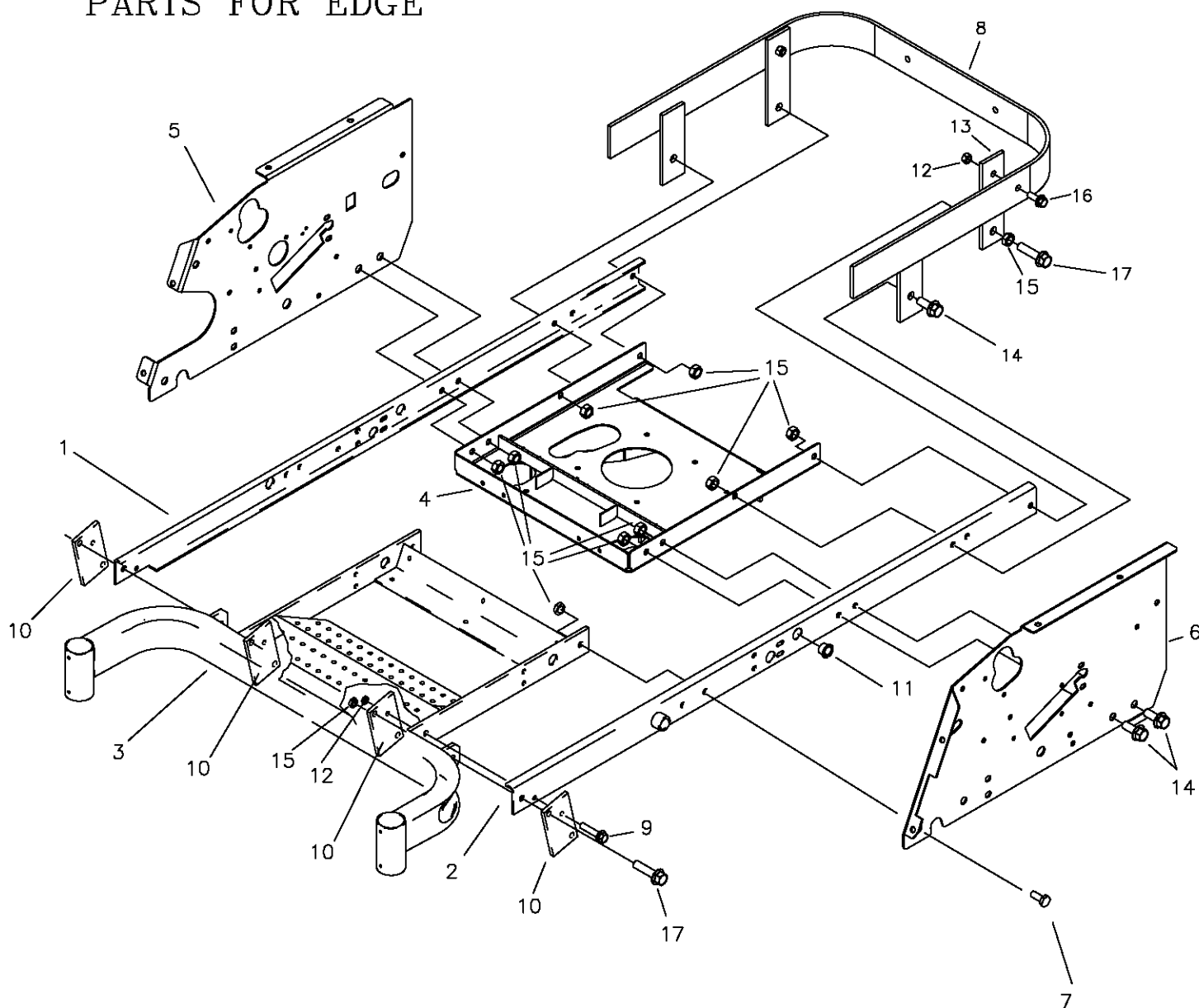
ITEM #	PART #	QTY	DESCRIPTION	ITEM #	PART #	QTY	DESCRIPTION
1	707-022P	1	SPACER	15	707-084P	1	TUBE, SPRING MOUNT
2	D-3617	1	PULLEY, FLAT IDLER, 1/2" BORE, 4"	16	659-085P	1	MOUNTING PIN
3	H-2619	1	SPRING, 5x1-1/2, TAPERED ENDS	17	F-1521	2	1/2" FLAT WASHER
4	707-012A	1	IDLER ARM ASSEMBLY	18	F-1537	1	3/8-16 x 3" CAPSCREW
5	700-026P	1	CLUTCH STOP	19	D-3730	2	FLANGED BUSHING
6	F-1015-18	1	5/16-18 x 1-3/4" CAPSCREW	20	F-2083	1	WASHER, 3/8 FENDER
7	F-1015-27	1	3/8-16 X 1-1/2" GR. 5	21	P-12918	1	DECAL, HYDRO BELT ROUTING
8	F-1009-02	1	5/16" FLAT WASHER				
9	F-1005-03	6	3/8-16 STOVER LOCK NUT				
10	F-1125	3	5/16" LOCK NUT				
11	700-107W	1	MOTOR MOUNT WELDMENT				
12	F-2128	1	FHCS, 1/2-13 x 2" GR.5				
13	F-1005-05	1	1/2-13 STOVER NUT				
14	F-2120	2	FHCS, 5/16-16 x 3/4" GR.5				

CASTER WHEEL ASSEMBLY



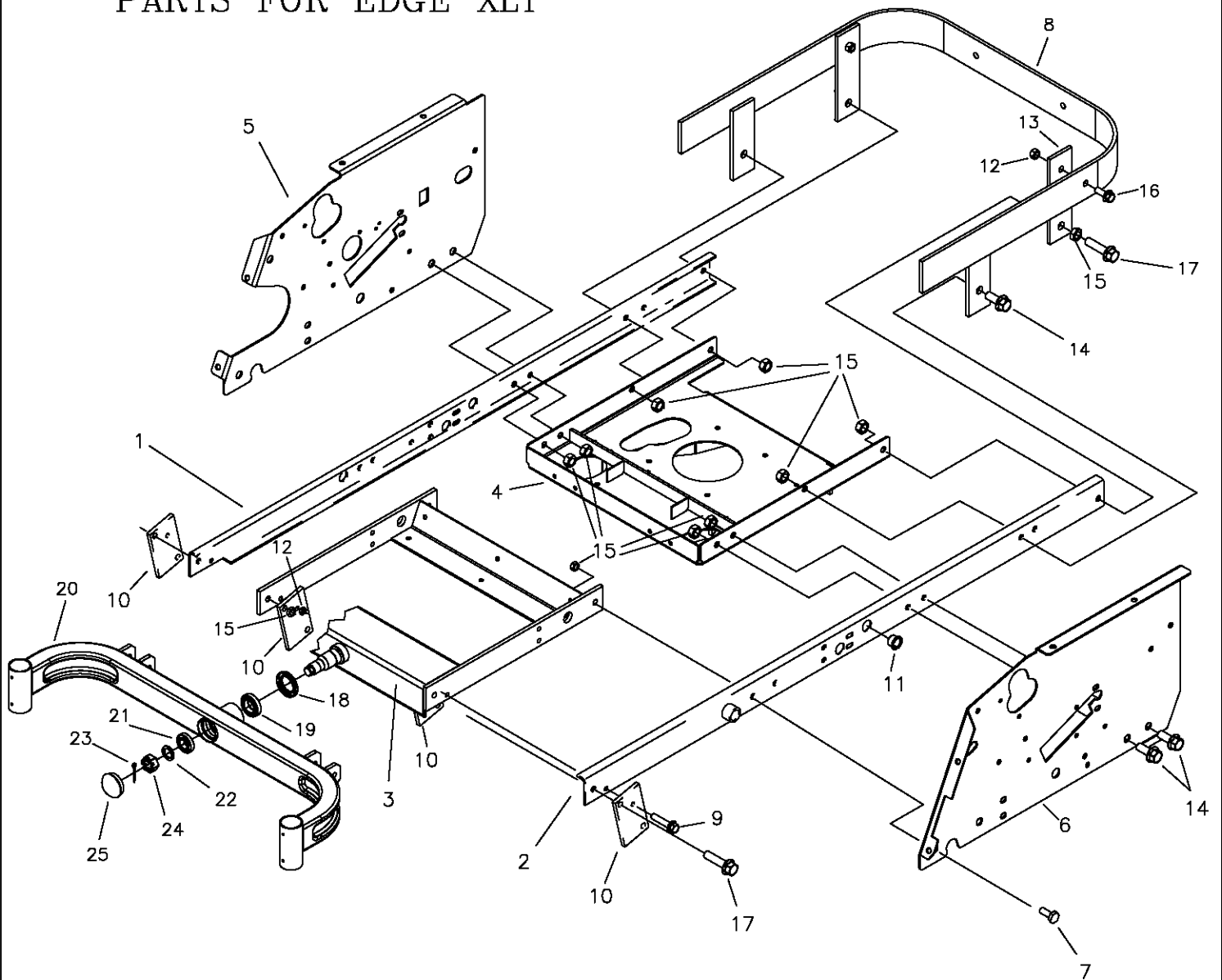
ITEM #	PART #	QTY	DESCRIPTION	ITEM #	PART #	QTY	DESCRIPTION
1	617-375W	2	CASTER YOKE WELDMENT	11	D-2008-02	4	BEARING, SPD SF-16-32
-	659-181A	1	FRONT WHEEL ASS'Y (LH)	12	F-1009-02	2	5/16" FLAT WASHER
-	659-182A	1	FRONT WHEEL ASS'Y (RH)	13	F-1019-02	2	5/16" LOCK WASHER
2	611-136P	2	BEARING SPACER	14	F-1863	2	5/16"-18 X 1" W/NYLOC PATCH
3	636-176P	2	BEARING CAP, RED	15	659-351W	1	FRONT AXLE (EDGE)
4	611-135P	4	BEARING SHIELD	-	659-287W	1	FRONT AXLE (EDGE XLT)
5	D-3432	4	BEARING, 5/8 ID X 1-3/8 OD	16	H-1056	2	GREASE ZERK
6	P-11384	2	DECAL, 12 PSI	17	659-185P	2	STOP TAB
7	D-3574	2	13" TIRE W/RIM	18	F-2030	4	1/4" X 5/8" SELF TAPPING SCREW
8	F-1129	2	1/2-13 X 8" GR. 5 BOLT	19	F-1855	2	3/16" X 1" ROLL PIN
9	F-1005-05	2	1/2-13 LOCK NUT				
10	F-1456	2	3/16" X 2" ROLL PIN				

FRAME SIDE & RELATED PARTS FOR EDGE



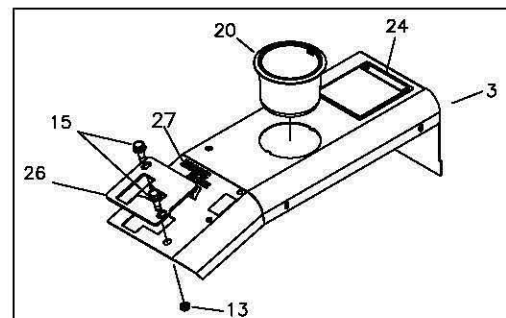
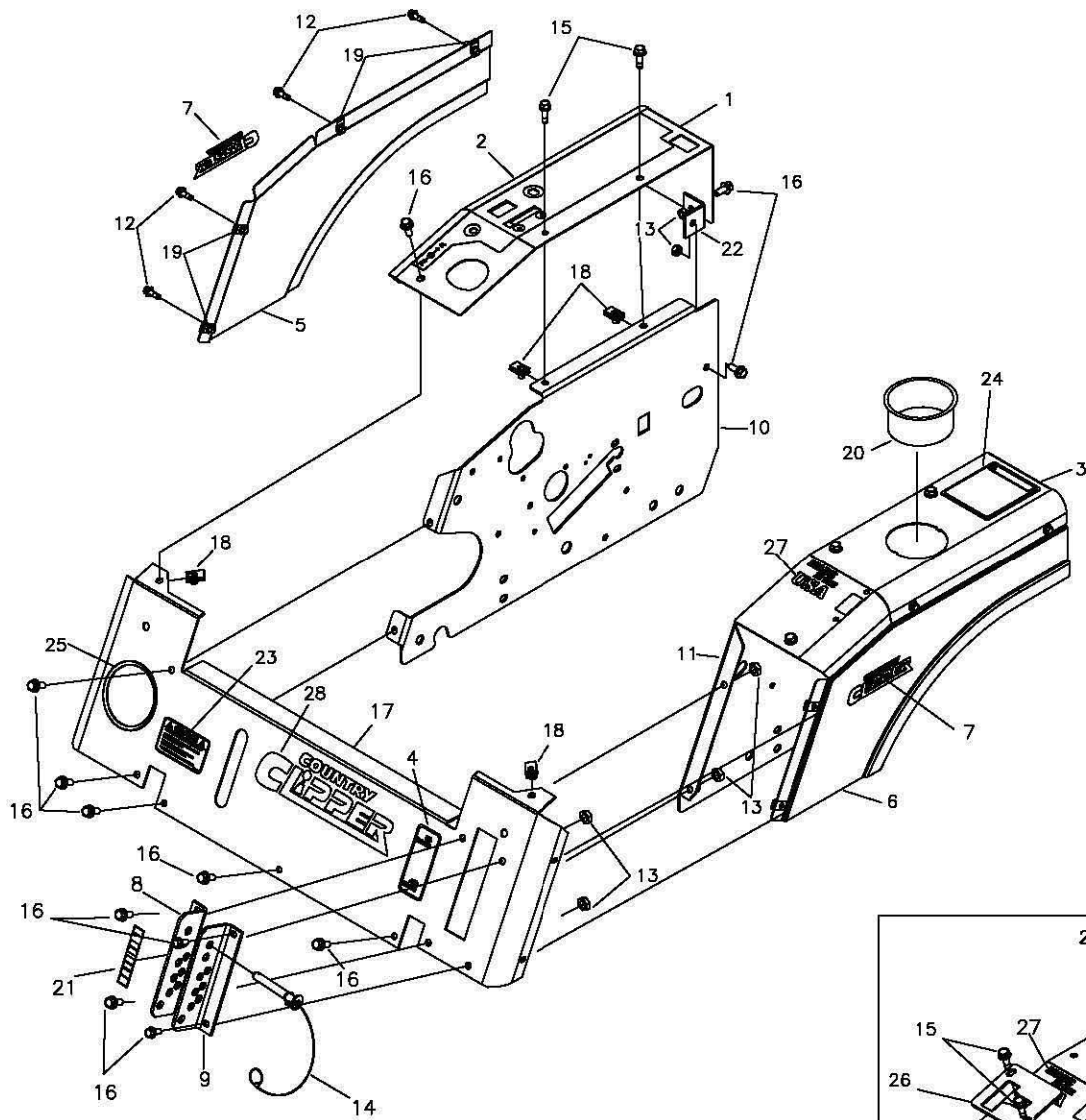
ITEM #	PART #	QTY	DESCRIPTION
1	659-021W	1	FRAME SIDE RH.
2	659-022W	1	FRAME SIDE LH.
3	659-351W	1	AXLE MOUNTING WELDMENT
4	700-107W	1	MOTOR MOUNT WELDMENT
5	700-083P	1	SIDE PANEL RH. (JS)
-	700-109P	1	SIDE PANEL RH. (TS)
6	700-084P	1	SIDE PANEL RH. (JS)
-	700-110P	1	SIDE PANEL LH. (TS)
7	F-1386	2	1/2-13 x 1-1/4" CAPSCREW
8	700-080W	1	WLDT, ENGINE GUARD
9	F-2126	2	FHCS, 3/8-16 x 2" GR.5
10	642-063P	4	DRAG BAR TAB
11	D-3730	2	BUSHING, 5/8 BORE (JS ONLY)
12	F-1005-03	4	3/8-16 STOVER NUT
13	700-078P	1	BAR, BUMPER BRACE
14	F-2127	6	FHCS, 1/2-13 X 1-1/4" GR.5
15	F-1005-05	13	1/2-13 LOCK NUT
16	F-2141	2	FHCS, 3/8-16 X 1" GR.5
17	F-2128	3	FHCS, 1/2-13 X 2", GR.5

FRAME SIDE & RELATED PARTS FOR EDGE XLT



ITEM #	PART #	QTY	DESCRIPTION	ITEM #	PART #	QTY	DESCRIPTION
1	659-021W	1	FRAME SIDE RH.	13	700-078P	1	BAR, BUMPER BRACE
2	659-022W	1	FRAME SIDE LH.	14	F-2127	6	FHCS, 1/2-13 X 1-1/4" GR.5
3	709-157W	1	AXLE MOUNTING WELDMENT	15	F-1005-05	13	1/2-13 LOCK NUT
4	700-107W	1	MOTOR MOUNT WELDMENT	16	F-2141	2	FHCS, 3/8-16 X 1" GR.5
5	700-083P	1	SIDE PANEL RH. (JS)	17	F-2128	3	FHCS, 1/2-13 X 2", GR.5
-	700-109P	1	SIDE PANEL RH. (TS)	18	H-2812	1	SEAL, SHAFT, 1.75, 2.375, 0.313
6	700-084P	1	SIDE PANEL RH. (JS)	19	D-3825	1	BRG, TAPERED, SET
-	700-110P	1	SIDE PANEL LH. (TS)	20	659-287W	1	FRONT AXLE WLDT.
7	F-1386	2	1/2-13 x 1-1/4" CAPSCREW	21	D-3826	1	BRG, TAPERED, SET
8	700-080W	1	WLDT, ENGINE GUARD	22	606-303P	1	1" WASHER
9	F-2126	2	FHCS, 3/8-16 x 2" GR.5	23	F-1728	1	3/16 X 2" COTTER PIN
10	642-063P	4	DRAG BAR TAB	24	F-1724	1	1-14 SLOTTED NUT
11	D-3730	2	BUSHING, 5/8 BORE (JS ONLY)	25	H-1924	1	GREASE CAP
12	F-1005-03	4	3/8-16 STOVER NUT				

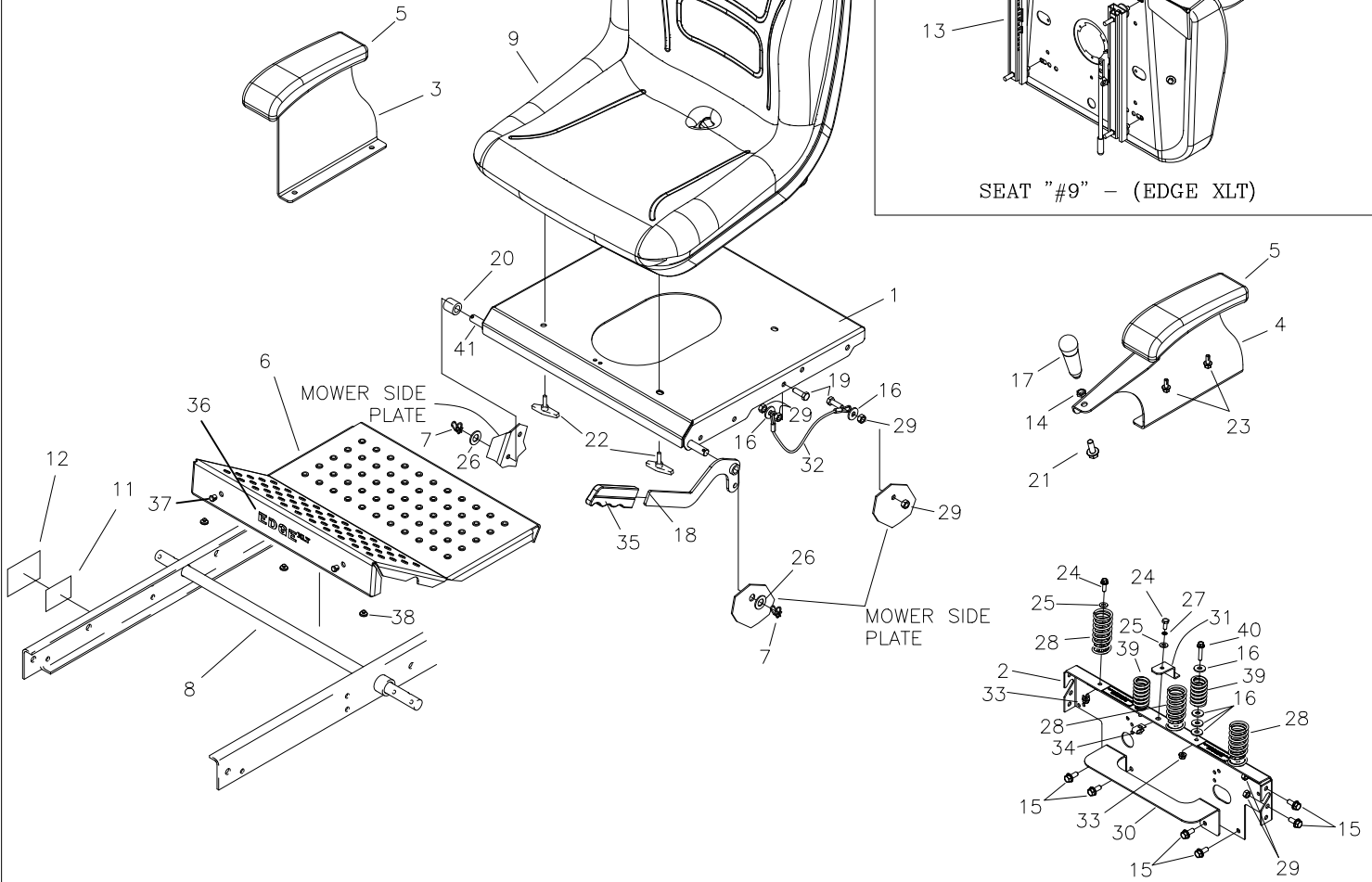
FENDER ASSEMBLY



TWINSTICK FENDER ASSY

REF NO.	PART NO.	QTY.	DESCRIPTION	REF NO.	PART NO.	QTY.	DESCRIPTION
1	625-146A	1	FENDER CAP w/DECAL, EDGE, RH (JS)	15	F-2121	8	FHCS, 5/16-18x1" GR.5 w/PATCH
-	625-148A	1	FENDER CAP w/DECAL, EDGE, RH (TS)	16	F-2120	15	FHCS, 5/16-18 X 3/4" GR.5
2	P-12925	1	DECAL, CONTROL PANEL	17	629-847A	1	FRONT PANEL w/DECAL, EDGE XLT
3	625-147A	1	FENDER CAP w/DECAL, EDGE, LH (JS)	-	625-144A	1	FRONT PANEL w/DECAL, EDGE
-	625-149A	1	FENDER CAP w/DECAL, EDGE, LH (TS)	18	F-1860	6	5/16-18 "U"-NUT
4	P-11382	1	DECAL, PARK BRAKE	19	F-1858	8	1/4-20 "U"-NUT
5	625-150A	1	FENDER SKIRT w/DECAL, EDGE, RH	20	H-2228	1	CUP HOLDER
6	625-151A	1	FENDER SKIRT w/DECAL, EDGE, LH	21	P-12039	1	DECAL, "CUT HEIGHT"
7	P-12098	2	DECAL, CC, SM	22	707-060P	2	BRACKET, FENDER
8	659-115A	1	LATCH PLATE RH W/DECAL	23	P-12557	1	DECAL, "CAUTION"
9	642-129P	1	LATCH PLATE LH.	24	P-11370	1	DECAL, WARNING
10	-----	1	SEE PAGE 10 & 11	25	H-1626	1	U CHANNEL TRIM
11	-----	1	SEE PAGE 10 & 11	26	659-262P	1	NEUTRAL PLATE
12	F-2119	8	FHCS, 1/4-20x3/4", GR.5 w/PATCH	27	P-13000	1	DECAL, "USA"
13	F-1125	15	5/16-18 LOCK NUT	28	P-12097	1	DECAL, COLORED, CC
14	629-854A	1	LOCK PIN, DECK HEIGHT, ASS'Y				

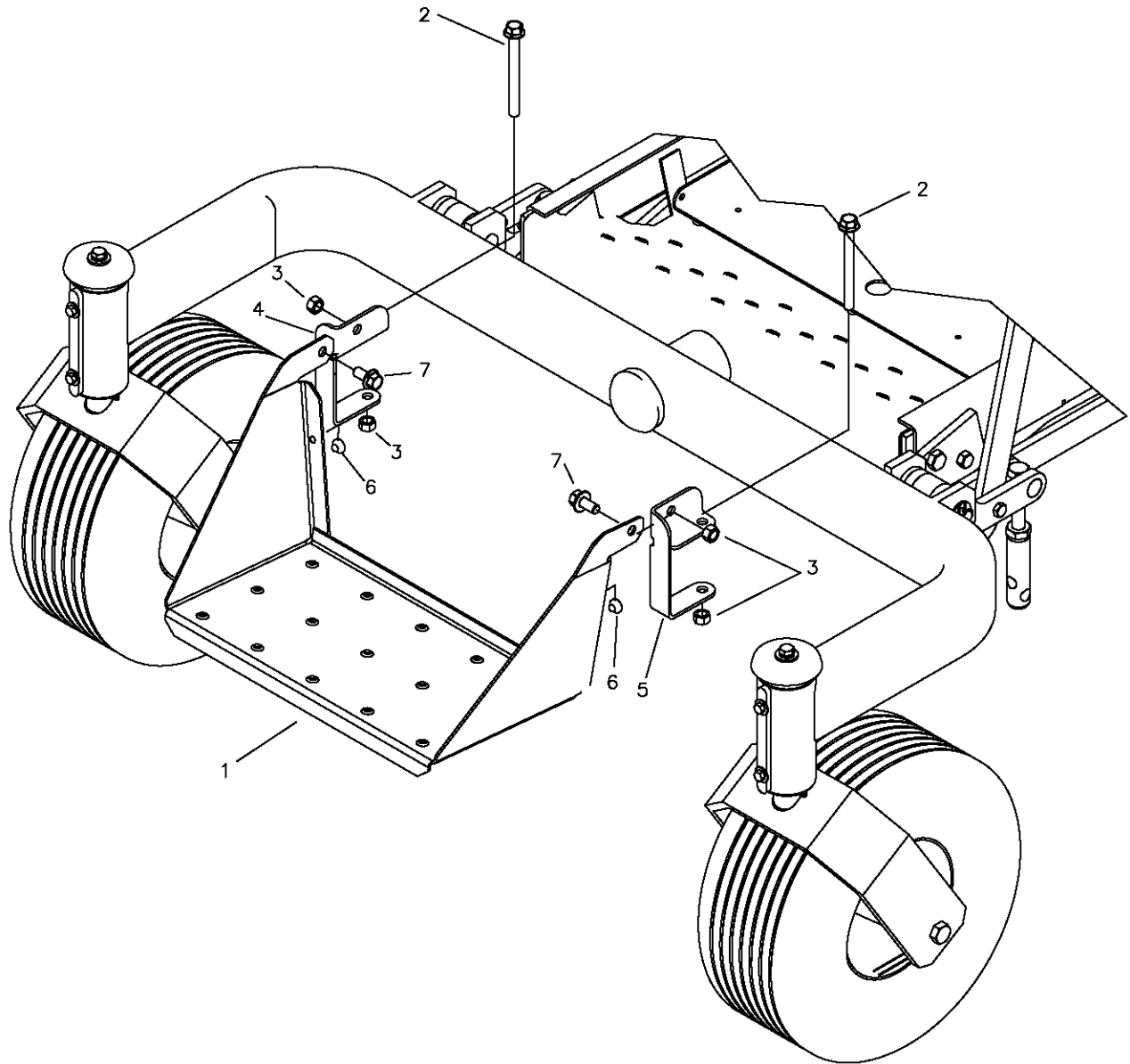
SEAT, FOOTDECK & RELATED PARTS



SEAT "#9" - (EDGE XLT)

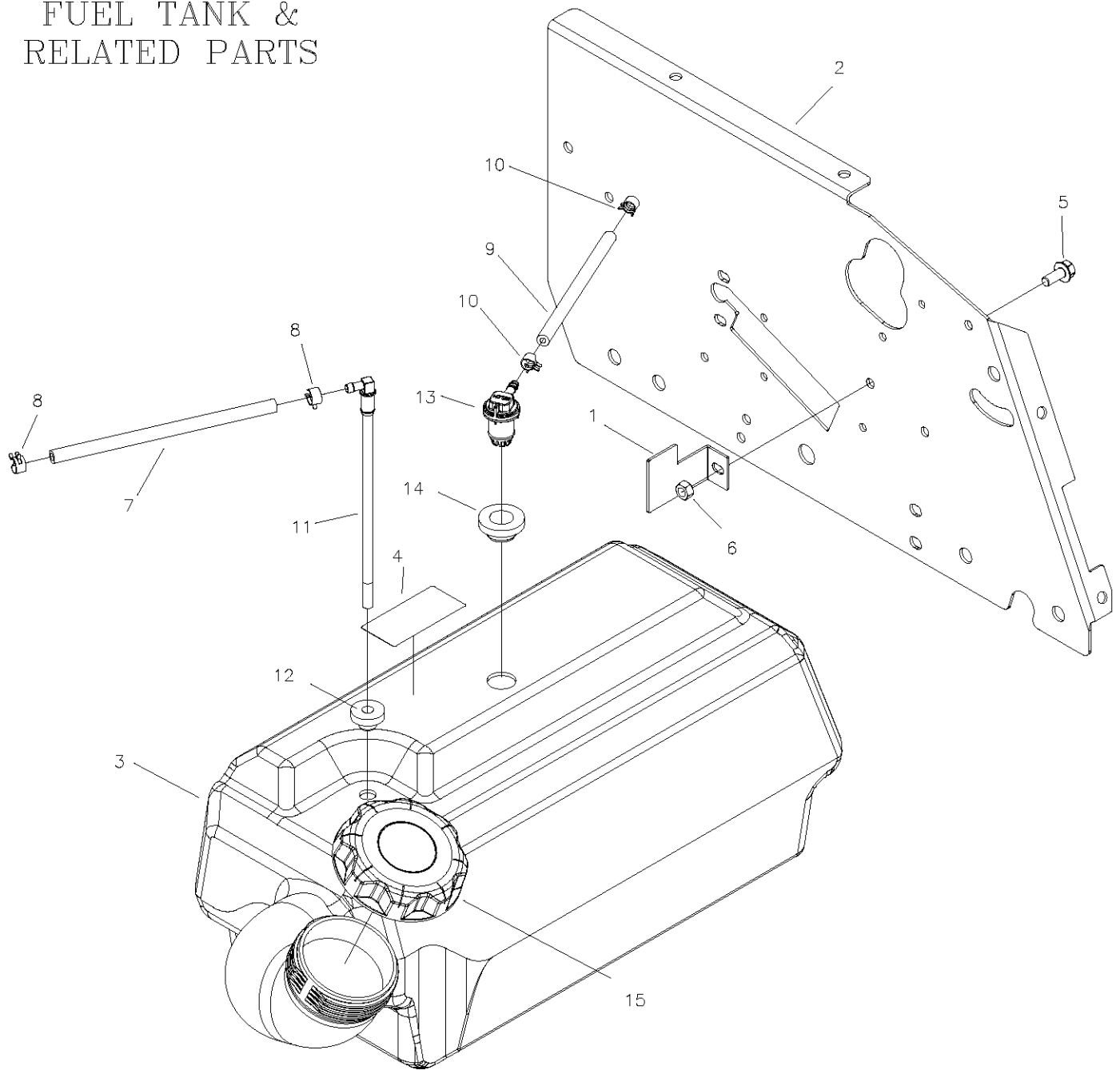
REF NO.	PART NO.	QTY.	DESCRIPTION	REF NO.	PART NO.	QTY.	DESCRIPTION
1	700-097P	1	PLATE, SEAT (EDGE)	19	F-1015-15	2	5/16-18 x 1" CAPSCREW
-	707-005P	1	PLATE, SEAT (EDGE XLT)	20	707-046P	1	SPACER, SEAT PAN
2	707-039P	1	PLT, REAR SEAT FILLER	21	F-2141	1	FHCS, 5/16-18x1" GR5
3	700-092P	1	PLATE, ARM REST, EDGE, RH	22	659-073A	4	T-HANDLE ASSEMBLY (EDGE)
-	700-129P	1	PLATE, ARM REST, EDGE XLT, RH	-	F-2063	4	3/8-16 NYLOC NUT, FLANGED (EDGE XLT)
4	700-093P	1	PLATE, ARM REST EDGE, LH (JS)	23	F-2134	6	HFCS 1/4-20x5/8" SELF TAPPING
-	700-095P	1	PLATE, ARM REST EDGE, LH (TS)	24	F-1538	4	1/4-20x3/4" CAPSCREW
-	700-127P	1	PLATE, ARM REST EDGE XLT, LH (JS)	25	F-1009-01	4	1/4" FLAT WASHER
-	700-128P	1	PLATE, ARM REST EDGE XLT, LH (TS)	26	F-1521	2	1/2" WASHER
5	H-2753	2	PAD, ARM REST	27	F-1019-01	1	1/4" LOCK WASHER
6	659-307P	1	FOOT DECK, EDGE	28	H-1920	3	SPRING, ASSIST
-	629-849A	1	FOOT DECK w/DECALS, EDGE XLT	29	F-1125	9	5/16-18 STOVER NUT
7	H-2239	1	1/2" RUE RING	30	707-066P	1	SHELF, REAR, FUEL TANK
8	620-051P	1	LIFT BAR	31	659-137P	1	BATTERY HOLD DOWN
9	H-2746	1	SEAT (EDGE)	32	H-2460	1	CABLE
-	H-2604	1	SEAT (EDGE XLT)	33	F-1005-01	1	1/4-20 STOVER NUT
11	P-13044	1	SERIAL TAG	34	F-1858	1	1/4-20 "U" NUT
12	P-12473	1	SERIAL TAG LAMINATION DECAL	35	H-1926	1	HANDLE, GRIP
13	H-2760	1	TRACK KIT	36	P-12941	1	DECAL, EDGE
14	F-1486	1	3/8-16 JAM NUT	-	P-12974	1	DECAL, EDGE XLT
15	F-2120	8	FHCS, 5/16-18x3/4" GR5	37	H-1280	2	CAP PLUG, PLASTIC (EDGE XLT)
16	F-1009-02	11	5/16" FLAT WASHER	38	H-2461	3	RUBBER BUMPER
17	H-2764	1	HANDLE, JOYSTICK	39	H-2636	2	SPRING
18	707-042W	1	BRAKE HANDLE	40	F-2182	2	FHCS, 1/4-20x1-1/4" GR5
				41	700-091P	1	PIN, SEAT HINGE

FRONT STEP ASSEMBLY (EDGE XLT ONLY)



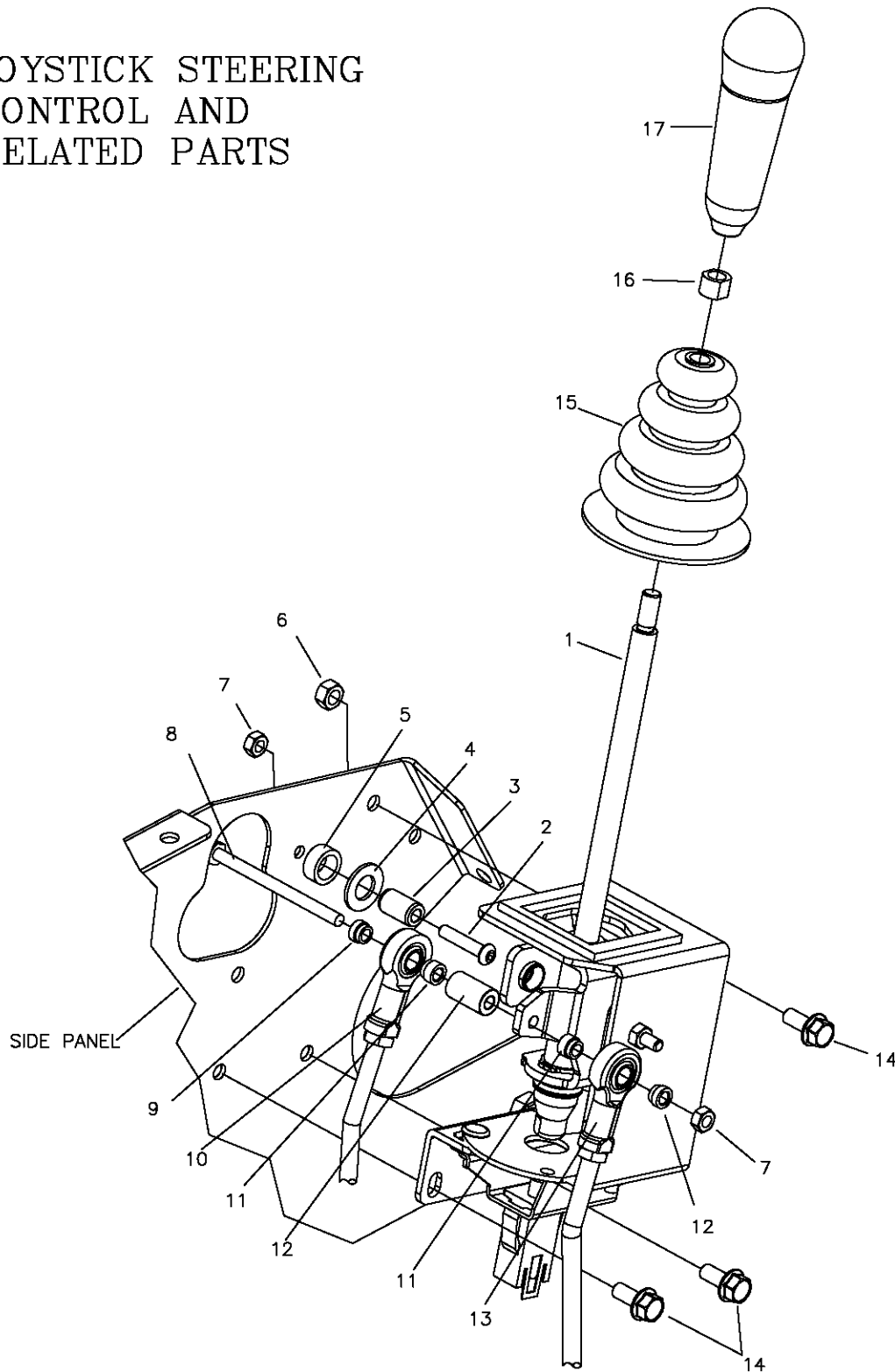
REF NO.	PART NO.	QTY.	DESCRIPTION
1	663-134P	1	FRONT STEP
2	F-2142	2	FHCS, 3/8-16 X 4" GR.5
3	F-1005-03	4	3/8-16 LOCK NUT
4	659-241P	1	BRACKET, STEP MOUNT, RH
5	659-242P	1	BRACKET, STEP MOUNT, LH
6	H-2461	2	RUBBER BUMPER BUTTON
7	F-2124	2	FHCS, 3/8-16 X 3/4" GR.5

FUEL TANK & RELATED PARTS



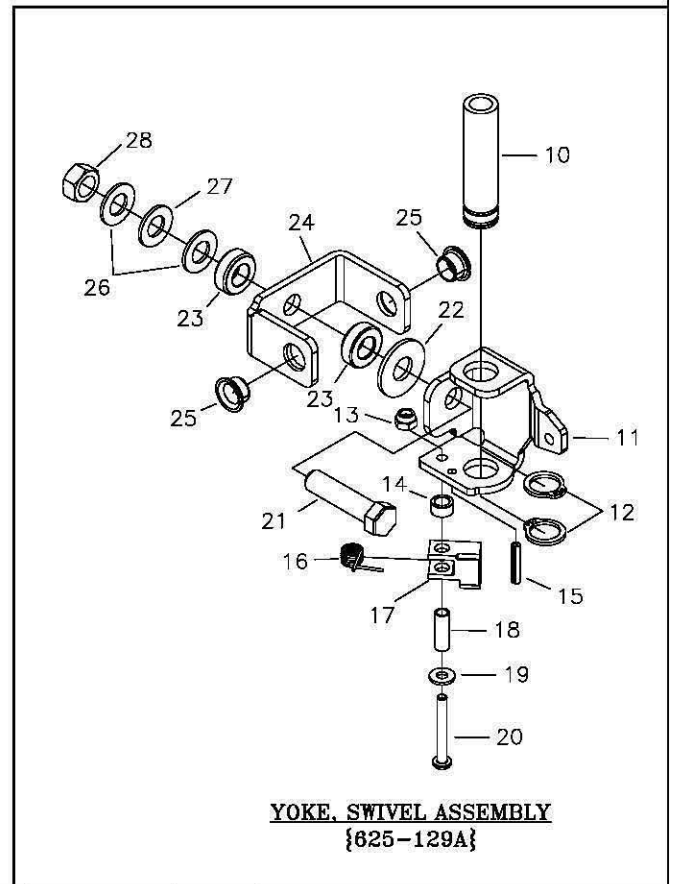
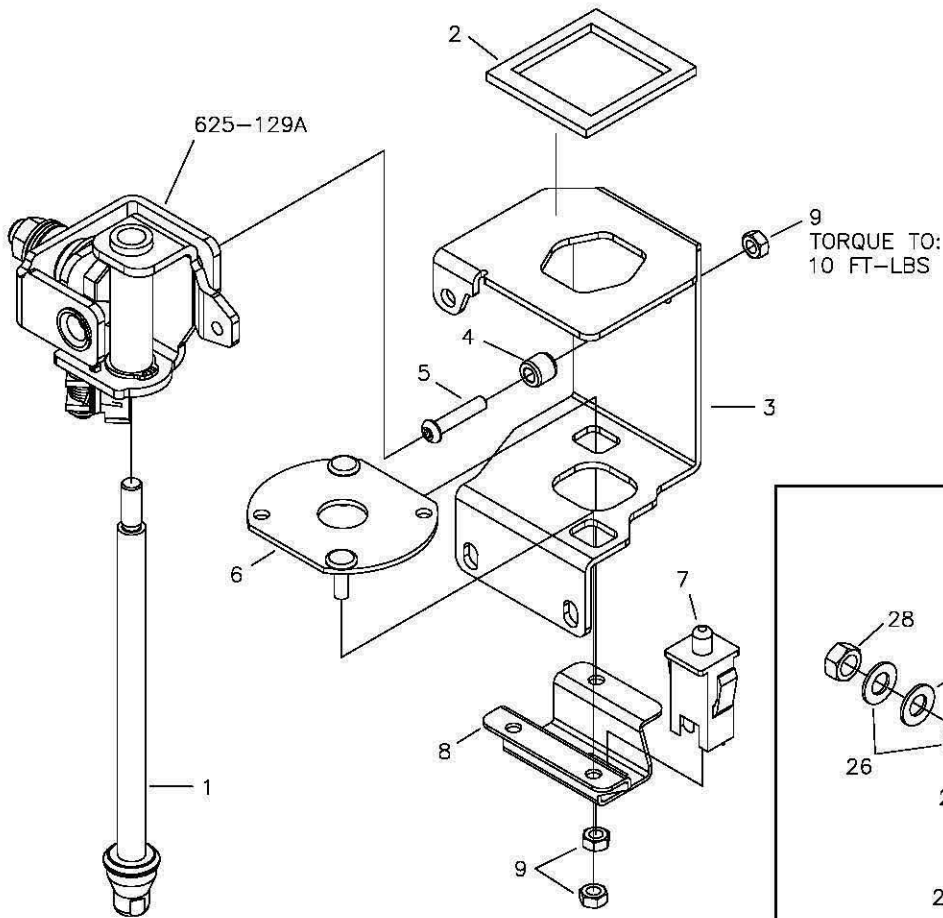
ITEM #	PART #	QTY	DESCRIPTION
1	700-108P	1	STRAP, FUEL TANK
2	-----	1	SEE PAGE #10
3	H-2724	1	FUEL TANK ASSEMBLY, SMALL
4	P-12922	1	CARB/EPA LABEL
5	F-2120	1	FHCS, 5/16-18x3/4", GR5
6	F-1125	1	5/16-18 Stover Nut
7	H-1648	4.0ft	Fuel Line
8	H-1687	2	1/2 O.D. Hose Spring Clamp
9	H-2697	4.0ft	VENT LINE
10	H-2698	2	HOSE CLAMP, .406 OD
11	H-2742	1	PICK UP TUBE
12	H-2741	1	GROMMET, PICK UP TUBE
13	H-2678	1	REMOTE VENT
14	H-2679	2	REMOTE VENT GROMMET
15	H-2743	1	GAS CAP

JOYSTICK STEERING CONTROL AND RELATED PARTS



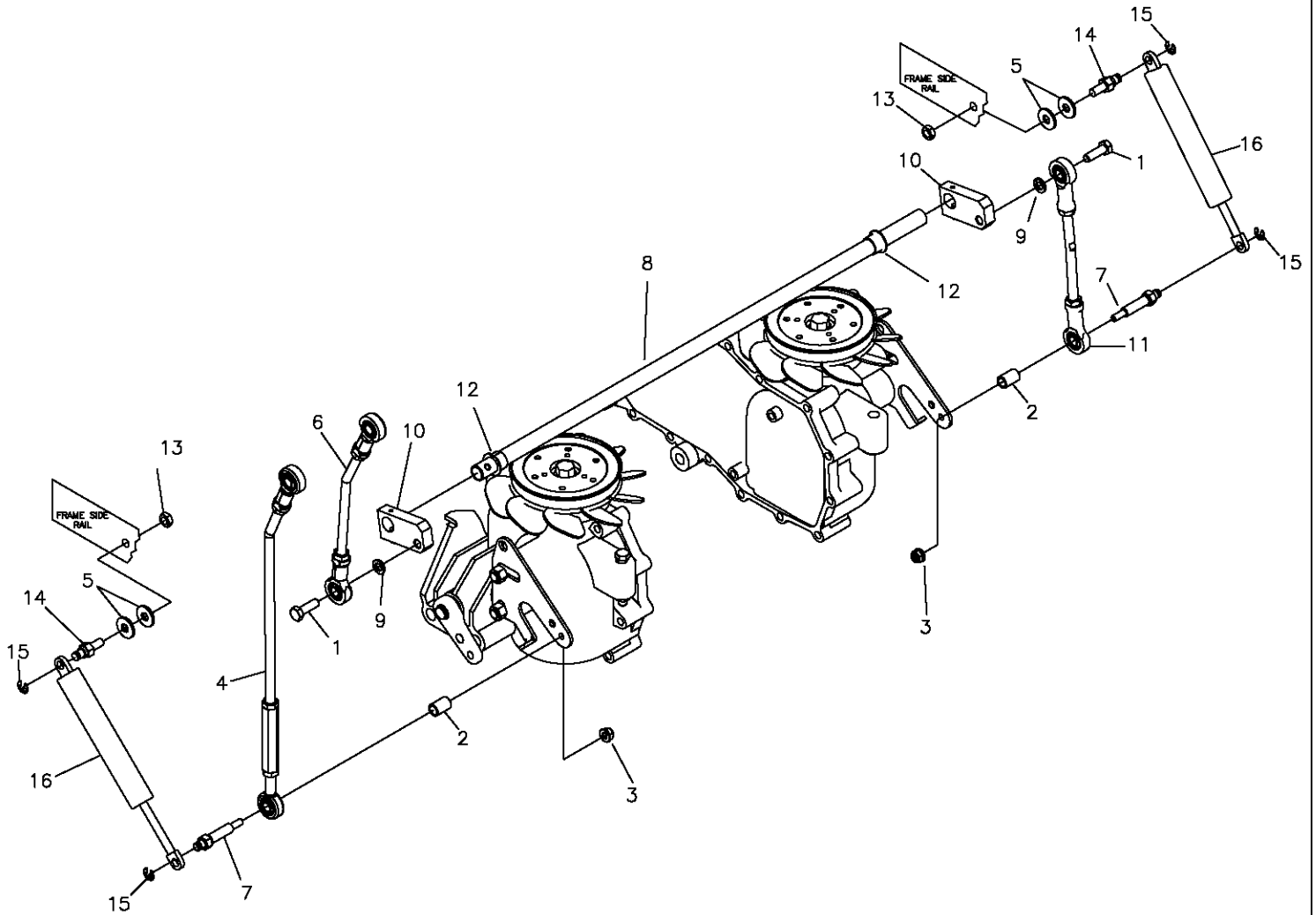
REF NO.	PART NO.	QTY.	DESCRIPTION	REF NO.	PART NO.	QTY.	DESCRIPTION
1	625-121A	1	JOYSTICK ASSEMBLY	10	707-082P	1	LINKAGE, INNER, JOYSTICK
2	F-2103	1	BUTTON SHCS, 1/4-20x1"	11	625-107P	1	BUSHING, .375 ROD END
3	625-119P	1	PIN, PIVOT, JS, LONG	12	625-100P	1	TUBE, PIVOT, JOYSTICK
4	F-1521	1	1/2" WASHER	13	707-083P	1	OUTER, LINKAGE, JOYSTICK
5	625-126P	1	SPACER, JOYSTICK PANEL	14	F-2120	3	FHCS, 5/16-18 x 3/4" GR5
6	F-1125	3	5/16-18 STOVER NUT	15	H-1991	1	BOOT
7	F-1005-01	1	1/4-20 LOCK NUT	16	H-2765	1	NUT, JOYSTICK
8	F-1020-01	1	1/4-20 x 3-1/2" CAPSCREW	17	H-2764	1	HANDLE, JOYSTICK
9	625-116P	1	BUSHING, .375 ROD END, SHORT				

JOYSTICK ASSEMBLY 625-121A



ITEM	PART #	QTY.	DESCRIPTION	ITEM	PART #	QTY.	DESCRIPTION
1	625-130A	1	ROD ASSEMBLY, SHORT	15	F-1503	1	3/16 x 1" SPIRAL PIN
2	H-1947	1	GASKET, FOAM, JOYSTICK	16	H-2710	1	SPRING, DETENT, JOYSTICK
3	625-095P	1	HOUSING, JOYSTICK	17	625-103P	1	TAB, CAM DETENT
4	625-106P	1	PIN, PIVOT, JOYSTICK	18	625-124P	1	TUBE-SPACER, DETENT CAM
5	F-2103	1	BUTTON SHCS, 1/4-20 x 1", CZ	19	F-2136	1	WASHER, FLAT, #12 PLAIN
6	625-127W	1	NEUTRAL PLATE, WLDT	20	F-2135	1	SCR, PANHD, PHLPS, #12-24x1-3/4"
7	E-6474	1	SWITCH, SNAP MOUNT	21	F-1293	1	1/2-13 x 2" CAPSCREW
8	659-285P	1	MOUNT, SWITCH	22	F-1009-05	1	1/2" FLAT WASHER
9	F-1005-01	3	1/4-20 LOCK NUT	23	D-3857	2	THRUST BEARING
10	625-099P	1	TUBE, GUIDE, CONTROL ROD	24	625-097P	1	PIVOT, JOYSTICK (PART OF 625-128A)
11	625-096P	1	YOKE, SWIVEL, JOYSTICK	25	D-3784	2	BUSHING, FLANGED (PART OF 625-128A)
12	H-2705	2	RING, DETENT, .75 EXT.	26	F-1521	2	1/2" WASHER, CUSTOM
13	F-2137	1	NUT, #12-24, NYLOCK	27	H-2704	1	SPRING, BELLEVILLE, .50x1x.073
14	625-125P	1	SPACER, CAM DETENT	28	F-1005-05	1	1/2-13 STOVER NUT

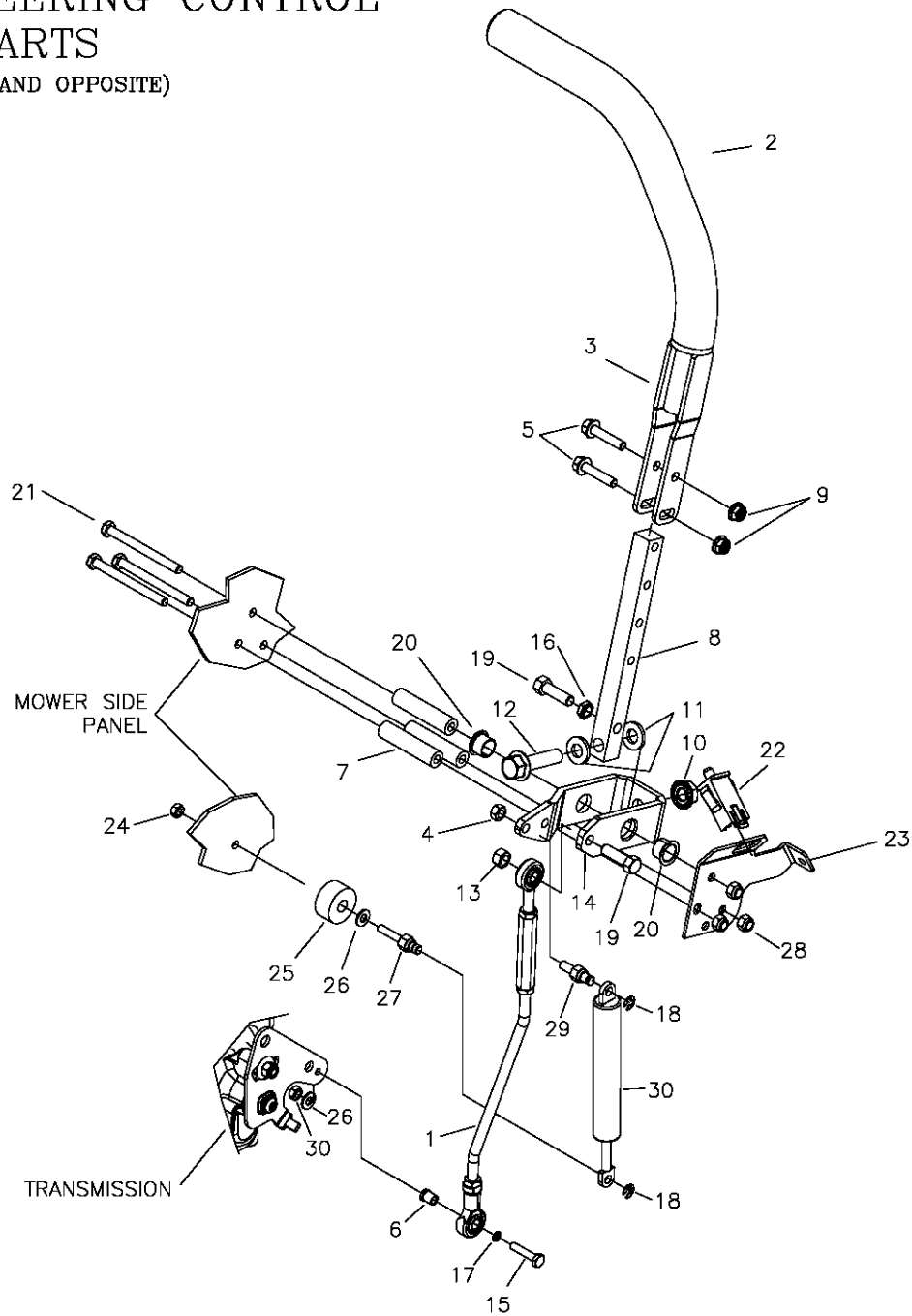
JOYSTICK STEERING CONTROL & RELATED PARTS (CON'T)



ITEM #	PART #	QTY	DESCRIPTION
1	F-2141	2	FHCS, 3/8-16x1" GR5
2	707-073P	2	STAND-OFF, LINKAGE MOUNT
3	F-2132	2	NUT, 1/4-20 NYLOC, FLANGED
4	707-083P	1	OUTER LINKAGE, JS
5	F-1009-02	4	5/16" FLAT WASHER
6	707-082P	1	INNER LINKAGE, JS
7	707-072P	2	STUD, LINKAGE MOUNT
8	700-055P	1	ROD, SHIFT CROSS
9	F-1019-03	2	3/8" LOCKWASHER
10	625-122A	2	SWIVEL ARM
11	H-2757	1	LINKAGE, JS
12	D-3730	2	BUSHING
13	F-1125	2	5/16-16 STOVER NUT
14	638-028P	2	DAMPER BOLT, 5/16-18 x 3/4
15	F-1610	4	E-RING FOR 1/4" SHAFT
16	H-2467	2	DUAL ACTION DAMPER

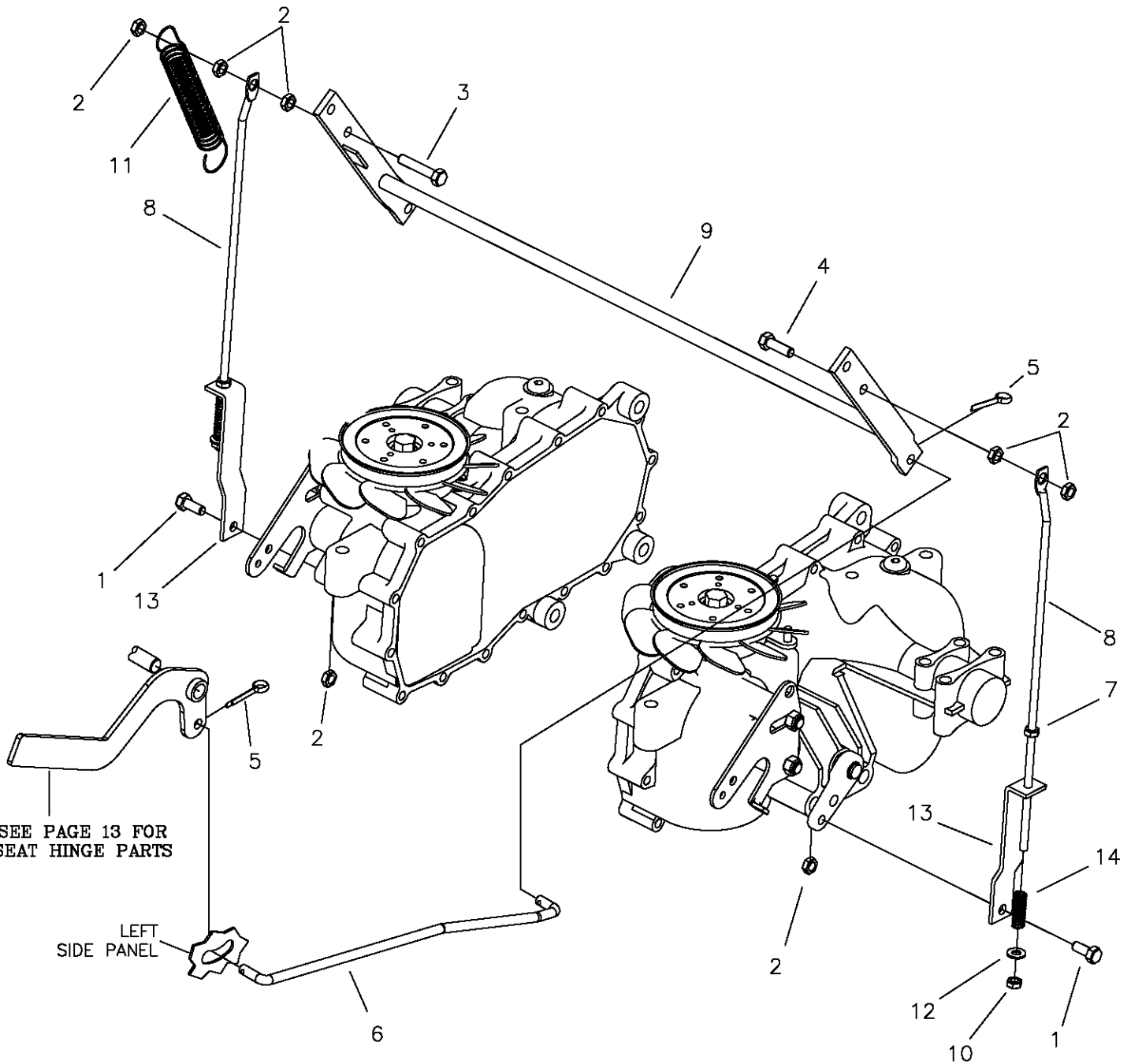
TWINSTICK STEERING CONTROL & RELATED PARTS

(RIGHTHAND SHOWN, LEFTHAND OPPOSITE)



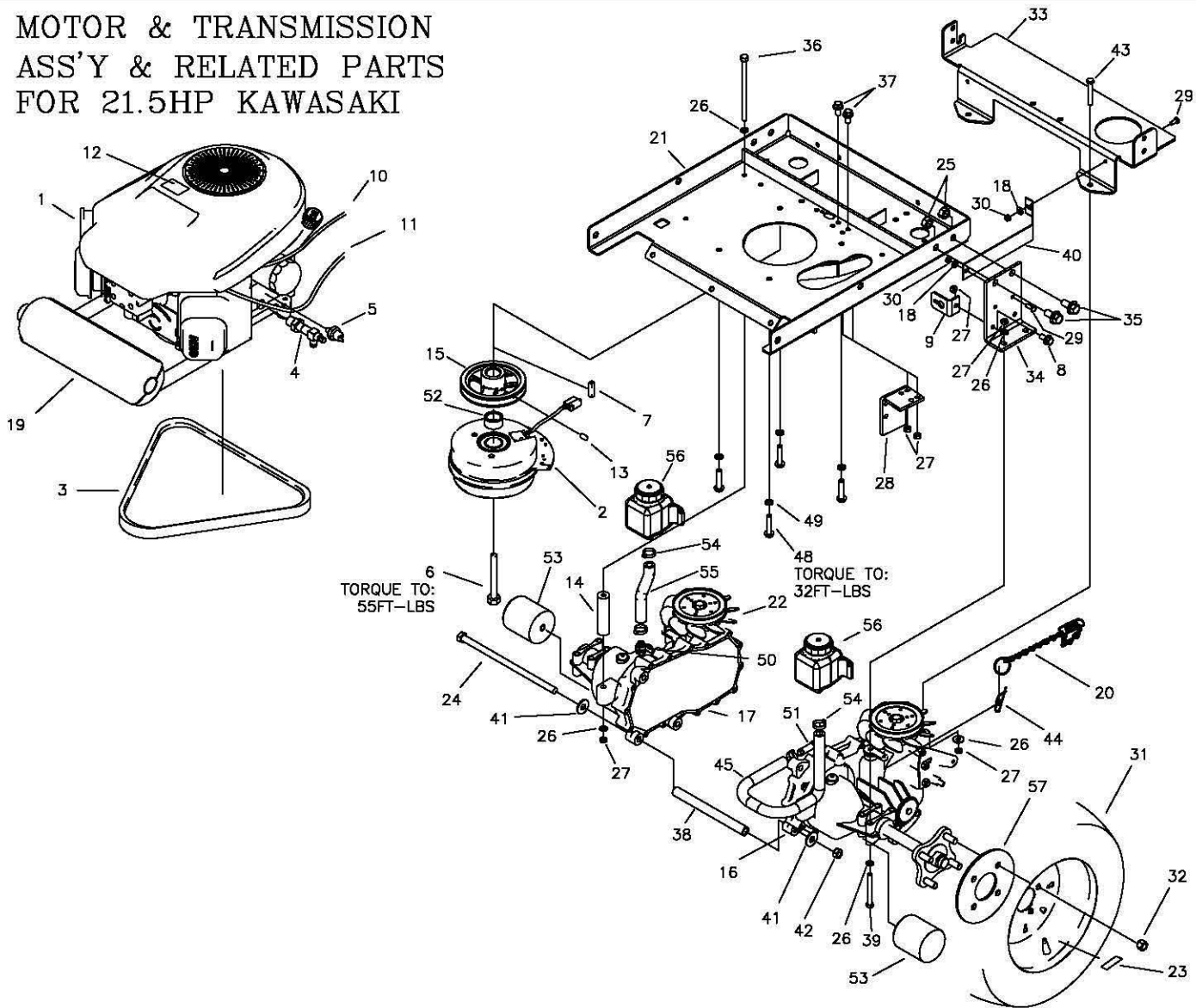
REF NO.	PART NO.	QTY.	DESCRIPTION	REF NO.	PART NO.	QTY.	DESCRIPTION
1	663-050P	1	LINK ROD ASSEMBLY	17	F-1019-01	4	1/4" LOCK WASHER
2	H-2739	1	GRIP, 15", CLOSED END	18	F-1610	2	E-RING FOR 1/4" SHAFT
3	659-364W	1	DUAL LEVER CONTROL	19	F-1307	2	3/8-16 X 1 1/4" CAPSCREW
4	F-1125	1	5/16 LOCK NUT	20	D-3730	2	FLANGED BUSHING 5/8" BORE
5	F-2129	2	FHCS, 5/16-18 X 1 1/2" w/PATCH	21	F-2058	3	5/16-18 x 3 1/2" CAPSCREW
6	H-2465	1	ADAPTER, ROD END, LONG	22	E-6474	1	SWITCH, SNAP MOUNT
7	659-252P	3	TUBE SPACER	23	647-242P	1	MOUNTING BRACKET (RH)
8	659-365P	1	LOWER SHIFT BLOCK	--	647-243P	1	MOUNTING BRACKET (LH)
9	F-2063	1	5/16-18 NYLOC NUT	24	F-1158	1	1/4-20 STOVER NUT
10	F-2060	2	1/2-13 NUT, FLANGE LOCK	25	F-2045	1	SPACER
11	606-151P	2	WASHER, NYLON 1/2 ID x 1/8"	26	F-1009-01	2	1/4" FLAT WASHER
12	F-2128	1	FHCS, 1/2-13 x 2" GR5	27	638-029P	1	DAMPER BOLT, 1/4-20
13	F-1005-03	1	3/8-16 STOVER NUT	28	F-1005-02	3	1/4-20 NYLOC NUT
14	659-243P	1	SHIFTING YOKE	29	638-028P	1	DAMPER BOLT, 5/16-18 X 3/4"
15	F-1539	1	1-4-20 x 1-1/4" CAPSCREW	30	H-2843	1	DUAL ACTION DAMPNER, 750N
16	F-1486	2	3/8-16 JAM NUT				

PARKING BRAKE ASSEMBLY & RELATED PARTS



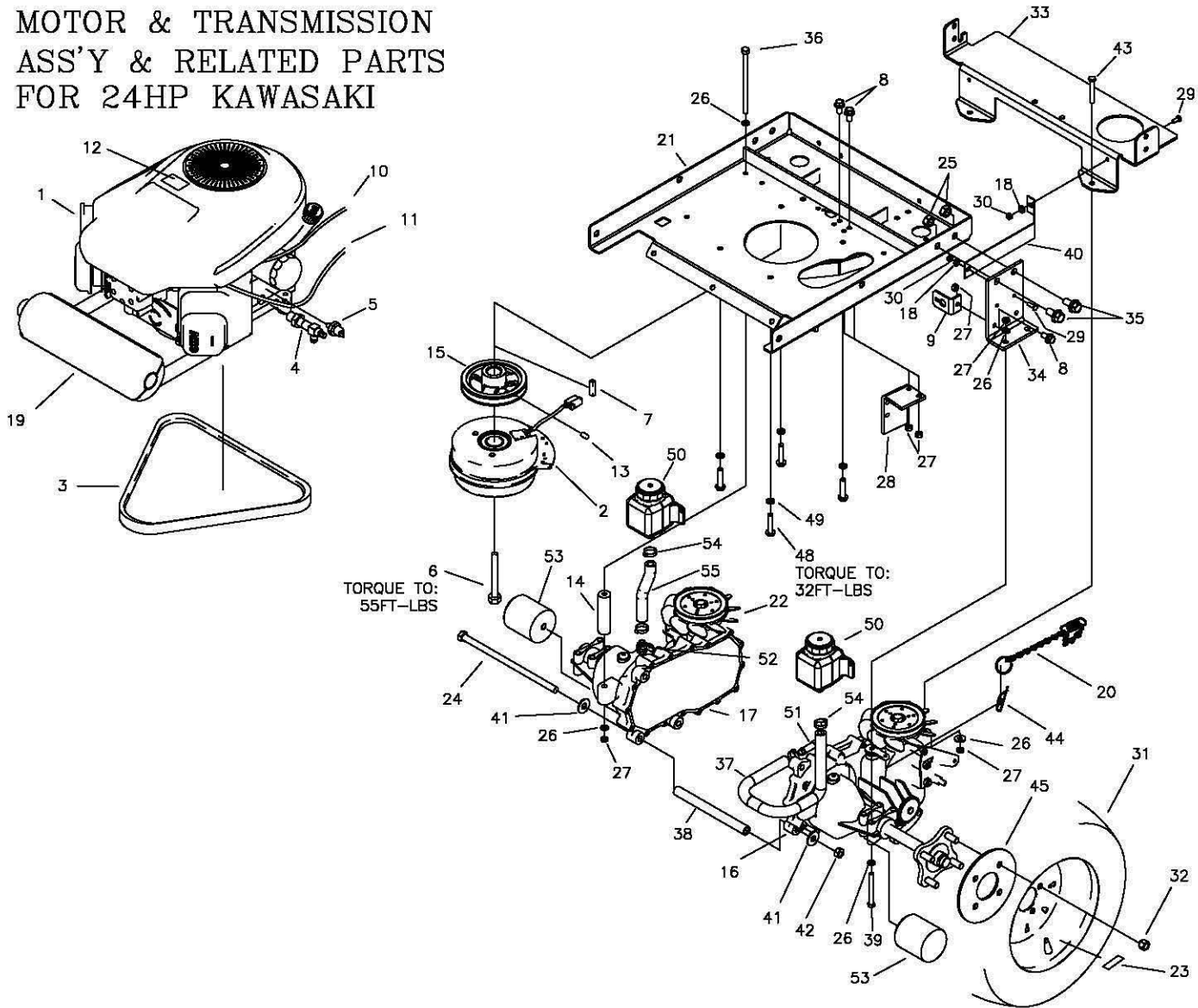
ITEM #	PART #	QTY	DESCRIPTION
1	F-1546	4	5/16-18 X 3/4" H.H.C.S.
2	F-1125	6	5/16" STOVER LOCK NUT
3	F-1015-17	1	5/16-18 X 1-1/2" H.H.C.S.
4	F-1015-15	1	5/16-18 X 1" H.H.C.S
5	F-1491	2	1" COTTER PIN
6	707-044P	1	LINK, PARK BRAKE
7	F-2132	2	NUT, 1/4-20, FLANGED NYLOC
8	H-2452	2	BRAKE LINK BAR, BENT
9	659-206W	1	BRAKE ROD WELDMENT
10	F-1748	2	1/4" NYLOC LOCK NUT
11	H-1635	1	EXTENSION SPRING 3/4 X 4"
12	F-1009-01	2	1/4" FLAT WASHER
13	659-159P	2	LOWER BRAKE LINK
14	H-1637	2	COMPRESSION SPRING

**MOTOR & TRANSMISSION
ASS'Y & RELATED PARTS
FOR 21.5HP KAWASAKI**



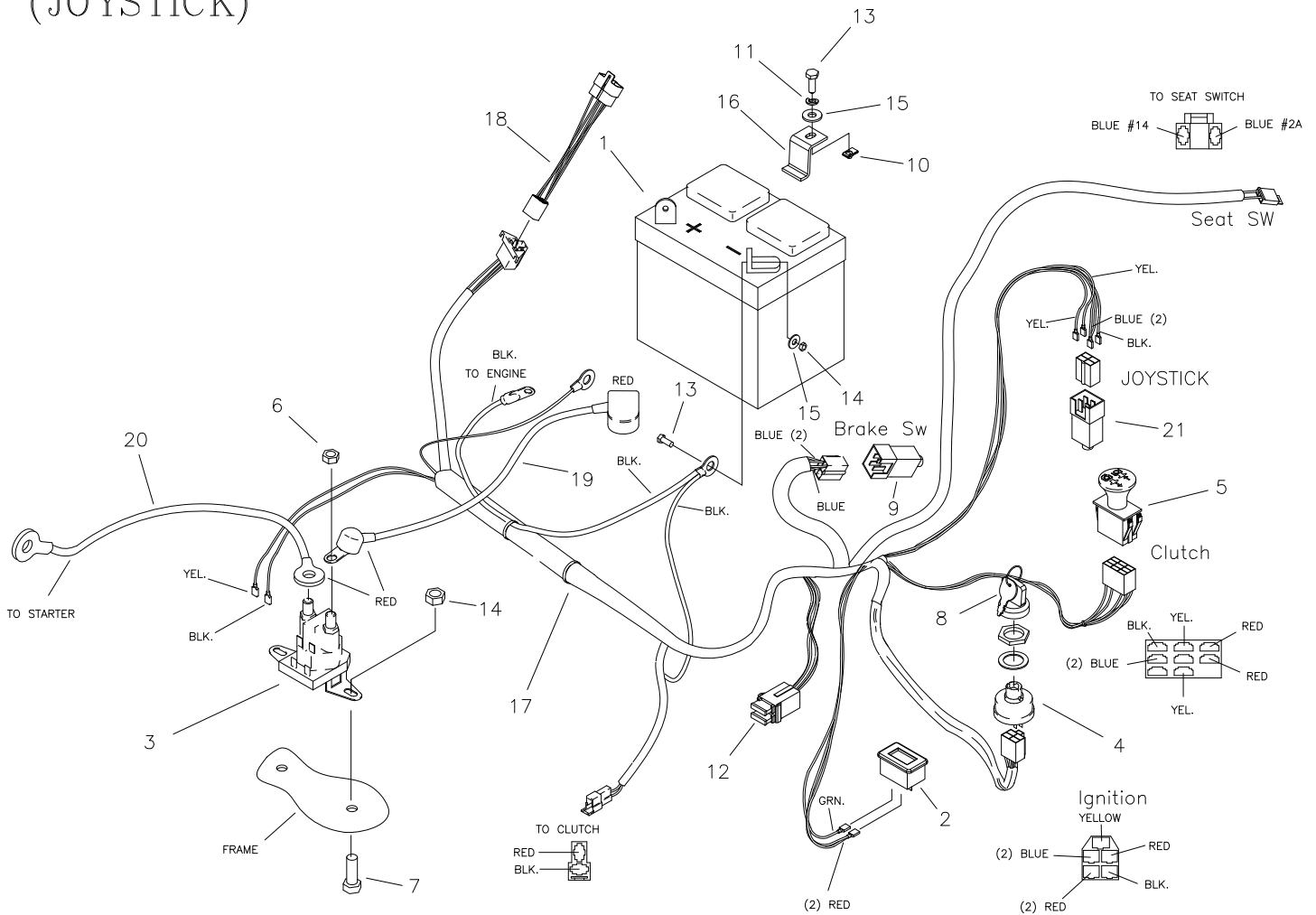
ITEM #	PART #	QTY	DESCRIPTION	ITEM #	PART #	QTY	DESCRIPTION
1	M-5393	1	ENGINE, KAW 21.5HP, FR651 TWIN	29	F-1015-02	4	1/4-20 X 5/8" GR. 5
2	E-6317	1	CLUTCH-BRAKE, 125ft/lb	30	F-1158	4	1/4-20 LOCK NUTS
3	D-3891	1	V-BELT, KEVLAR CORD, A-65	31	D-3353	2	TIRE, 20x10-10, TURF (48" DECK)
4	H-2590	1	OIL DRAIN VALVE	-	D-3787	2	TIRE, 20x12-10, TURF (52" DECK)
5	E-6307	1	OIL PRESSURE SWITCH	32	F-1499	8	LUG NUT, 1/2 X 20
6	F-2113	1	7/16-20x2-1/2" CAPSCREW, GR8	33	707-036P	1	BRACE, TRANSMISSION
7	621-113P	1	KEY, 1/4 SQ. X 1-1/4"	34	659-350P	2	HYDRO MOUNT BRACE
8	F-2124	2	FHCS, 5/16-18 X 3/4" BOLT GR5	35	F-2127	4	FHCS, 1/2-13 X 1-1/4" GR5
9	659-119P	1	FREE WHEEL ANCHOR	36	F-2145	2	5/16-18 X 6" BOLT GR8
10	H-2287	1	CHOKE CABLE	37	F-2120	1	FHCS, 1/2-13 X 1-1/4" GR5
11	H-2610	1	THROTTLE CABLE	38	659-173P	1	HYDRO BRACE
12	P-10077-11	1	DECAL, "CLEAN"	39	F-1544	4	5/16-18 X 3" BOLT
13	F-1228	1	SETSCREW, 1/4" X 1/4"	40	707-061P	2	FAN SHROUD
14	659-121P	2	REAR HYDRO BRACE	41	F-1009-03	2	3/8" FLAT WASHER
15	659-153P	1	MOTOR PULLEY	42	F-1005-03	1	3/8-16 LOCK NUT
16	D-3886-01	1	TRANSAXLE, RH, ZT-2800	43	F-1820	2	5/16-18 x 2-1/4" CAPSCREW
17	D-3886-02	1	TRANSAXLE, LH, ZT-2800	44	F-1492	2	5/16-3/8 RUE RING
18	F-1009-01	4	1/4" FLAT WASHER	45	H-2761	1	HOSE, 1/2" x 19"
19	H-2759	1	MUFFLER, KAWASAKI	48	F-1307	4	3/8-16 x 1-1/4" CAPSCREW
20	707-074P	2	FREEWHEEL CHAIN W/SPRING	49	F-1019-03	4	3/8" LOCK WASHER
21	707-009W	1	MOTOR MOUNT	50	H-2517	1	VENT TUBE ADAPTER
22	H-2539	2	FAN BLADE REPLACEMENT	51	H-2762	1	VENT TUBE ADAPTER
23	P-11384	2	DECAL, TIRE PRESSURE, 12 PSI	52	F-2043	1	SPACER
24	F-2007	1	3/8-16 X 12-1/2" HEX BOLT	53	H-2567	2	TRANSAXLE OIL FILTER
25	F-1005-05	4	1/2-13 STOVER NUT	54	H-2535	4	HOSE CLAMP
26	F-1009-02	14	5/16" FLAT WASHER	55	H-2549	1	HOSE 5" LONG
27	F-1125	8	5/16-18 LOCK NUT	56	D-3791	2	SMALL HYDRO TANK
28	707-033P	1	CLUTCH STOP	57	659-092P	2	WHEEL BACKING PLATE

MOTOR & TRANSMISSION ASS'Y & RELATED PARTS FOR 24HP KAWASAKI



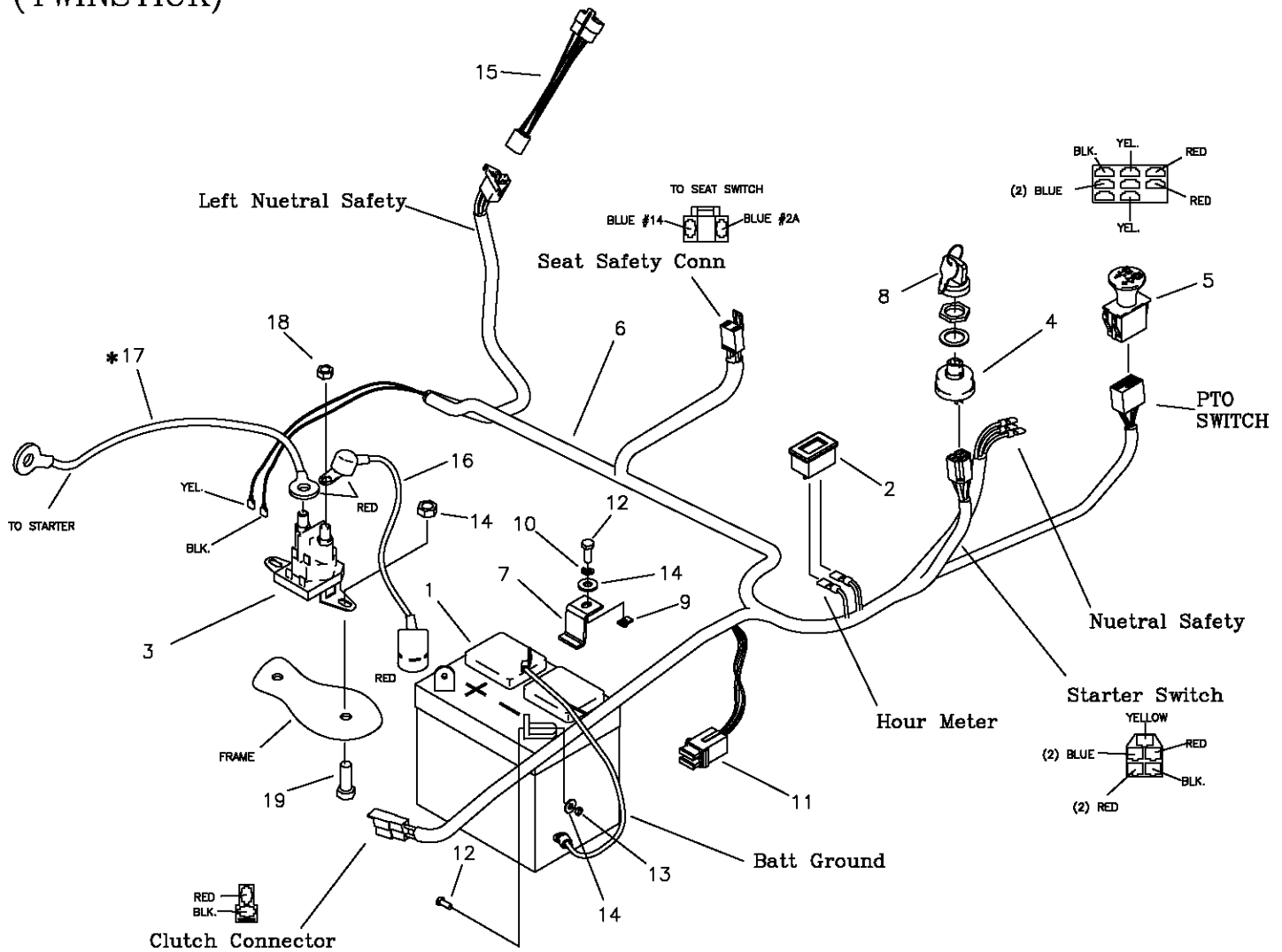
ITEM #	PART #	QTY	DESCRIPTION	ITEM #	PART #	QTY	DESCRIPTION
1	M-5394	1	ENGINE, KAW 24HP, FR730 TWIN	28	700-026P	1	CLUTCH STOP
2	E-6247	1	CLUTCH-BRAKE, 175ft/lb	29	F-1015-02	4	1/4-20 X 5/8" GR. 5
3	D-3891	1	V-BELT, KEVLAR CORD, A-65	30	F-1158	4	1/4-20 LOCK NUTS
4	H-2590	1	OIL DRAIN VALVE	31	D-3787	2	TIRE, 20x12-10, TURF
5	E-6307	1	OIL PRESSURE SWITCH	32	F-1499	8	LUG NUT, 1/2 X 20
6	F-2113	1	7/16-20x2-1/2" CAPSCREW, GR8	33	707-036P	1	BRACE, TRANSMISSION
7	621-113P	1	KEY, 1/4 SQ. X 1-1/4"	34	659-350P	2	HYDRO MOUNT BRACE
8	F-2120	4	FHCS, 5/16-18 X 3/4" BOLT GR5	35	F-2127	4	FHCS, 1/2-13 X 1-1/4" GR5
9	659-119P	2	FREE WHEEL ANCHOR	36	F-2145	2	5/16-18 X 6" BOLT GR8
10	H-2287	1	CHOKE CABLE	37	H-2761	1	HOSE, 1/2" x 19"
11	H-2610	1	THROTTLE CABLE	38	659-173P	1	HYDRO BRACE
12	P-10077-11	1	DECAL, "CLEAN"	39	F-1544	4	5/16-18 X 3" BOLT
13	F-1228	1	SETSCREW, 1/4" X 1/4"	40	707-061P	2	FAN SHROUD
14	659-121P	2	REAR HYDRO BRACE	41	F-1009-03	2	3/8" FLAT WASHER
15	659-154P	1	MOTOR PULLEY	42	F-1005-03	1	3/8-16 LOCK NUT
16	D-3886-01	1	TRANSAXLE, RH, ZT-2800	43	F-1820	2	5/16-18 x 2-1/4" CAPSCREW
17	D-3886-02	1	TRANSAXLE, LH, ZT-2800	44	F-1492	2	5/16-3/8 RUE RING
18	F-1009-01	4	1/4" FLAT WASHER	45	659-092P	2	WHEEL BACKING PLATE
19	H-2750	1	MUFFLER, KAWASAKI	48	F-1307	4	3/8-16 x 1-1/4" CAPSCREW
20	707-074P	2	FREEWHEEL CHAIN W/SPRING	49	F-1019-03	4	3/8" LOCK WASHER
21	700-107W	1	MOTOR MOUNT	50	D-3791	2	SMALL HYDRO TANK
22	H-2539	2	FAN BLADE REPLACEMENT	51	H-2762	1	VENT TUBE ADAPTER
23	P-11384	2	DECAL, TIRE PRESSURE, 12 PSI	52	H-2517	1	VENT TUBE ADAPTER
24	F-2007	1	3/8-16 X 12-1/2" HEX BOLT	53	H-2567	2	TRANSAXLE OIL FILTER
25	F-1005-05	4	1/2-13 STOVER NUT	54	H-2535	4	HOSE CLAMP
26	F-1009-02	14	5/16" FLAT WASHER	55	H-2549	1	HOSE 5" LONG
27	F-1125	8	5/16-18 LOCK NUT				

E-6415 WIRE HARNESS & RELATED PARTS (JOYSTICK)



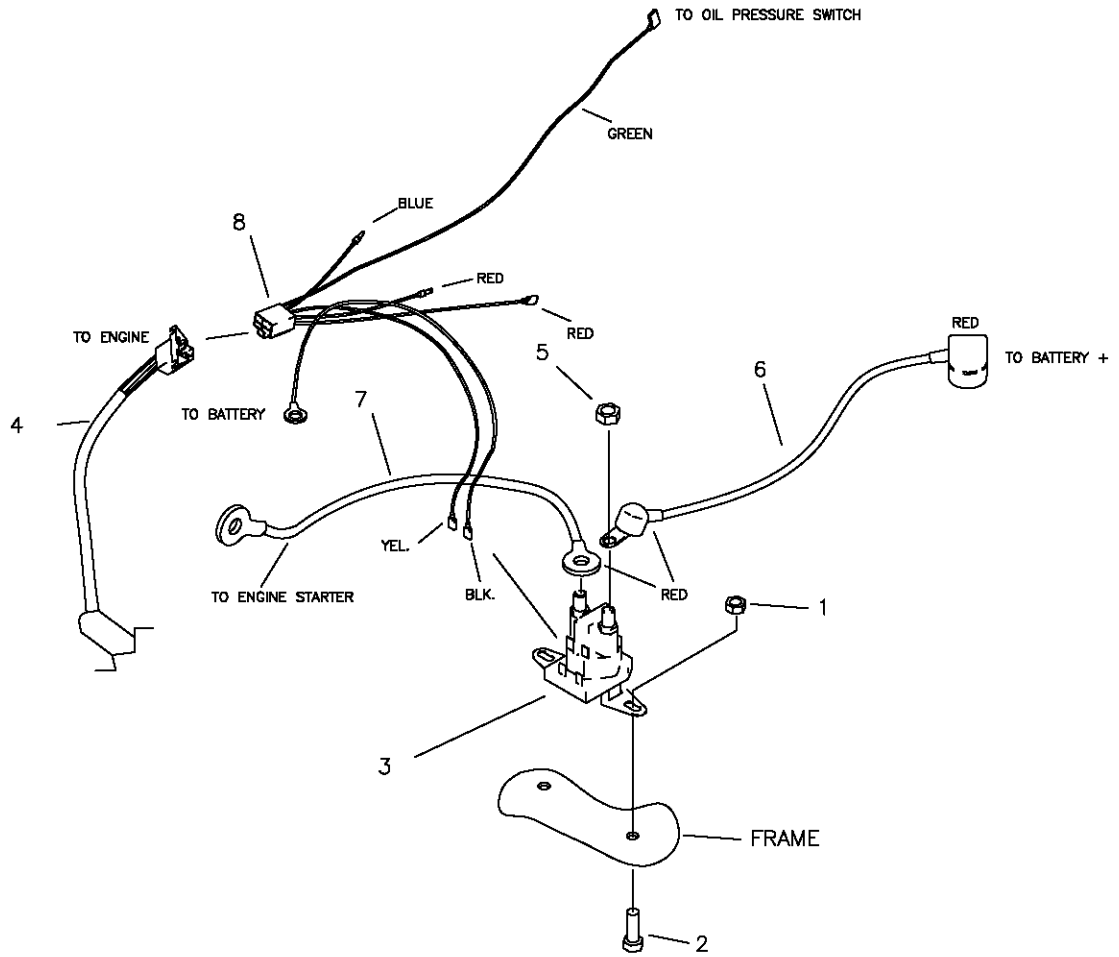
ITEM #	PART #	QTY	DESCRIPTION
1	E-6271	1	BATTERY
2	E-5878	1	HOUR METER
3	E-6054	1	SOLENOID
4	E-5873	1	START SWITCH
5	E-6403	1	CLUTCH SWITCH
6	F-1011-01	2	1/4-20 NUT
7	F-1015-02	2	1/4-20 x 5/8" CAPSCREW
8	E-6445	1	KEY, SET
9	E-6297	1	BRAKE SWITCH
10	F-1858	1	1/4-20 U-NUT
11	F-1019-01	1	1/4" LOCK WASHER
12	E-6207	2	FUSE, #ATC-30
13	F-1538	3	1/4-20 x 3/4" CAPSCREW
14	F-1158	5	1/4-20 STOVER NUT
15	F-1009-01	5	1/4" FLAT WASHER
16	659-137P	1	BATTERY HOLD DOWN
17	E-6415	1	WIRE HARNESS
18	E-6417	1	WIRE HARNESS ADAPTER (KAWASAKI)
19	E-6418	1	CABLE, BATTERY TO SOLENOID
20	E-6419	1	CABLE, SOLENOID TO ENGINE
21	E-6474	1	JOYSTICK SWITCH
-NOT SHOWN-			
	E-6374	1	SEAT SWITCH

E-6416 WIRE HARNESS & RELATED PARTS (TWINSTICK)



ITEM #	PART #	QTY	DESCRIPTION
1	E-6271	1	BATTERY
2	E-5878	1	HOUR METER
3	E-6054	1	SOLENOID
4	E-5873	1	START SWITCH
5	E-6403	1	CLUTCH SWITCH
6	E-6416	1	WIRE HARNESS
7	659-137P	1	BATTERY HOLD DOWN
8	E-6445	1	KEY, SET
9	F-1858	1	1/4-20 U-NUT
10	F-1019-01	1	1/4" LOCK WASHER
11	E-6207	2	FUSE, #ATC-30
12	F-1538	3	1/4-20 x 3/4" CAPSCREW
13	F-1158	2	1/4-20 STOVER NUT
14	F-1009-01	3	1/4" FLAT WASHER
15	E-6417	1	WIRE HARNESS ADAPTER (KAWASAKI)
16	E-6418	1	CABLE, BATTERY TO SOLENOID
17	E-6419	1	CABLE, SOLENOID TO ENGINE
18	F-1011-01	2	1/4-20 NUT
19	F-1015-02	2	1/4-20 x 5/8" CAPSCREW
-NOT SHOWN-			
	E-6374	1	SEAT SWITCH

WIRE HARNESS ADAPTER & RELATED PARTS FOR 21.5HP & 24HP KAWASAKI



ITEM #	PART #	QTY	DESCRIPTION
1	F-1158	2	1/4-20 STOVER NUT
2	F-1015-02	2	1/4-20 x 5/8" CAPSCREW
3	E-6054	1	SOLENOID
4	E-6415	1	WIRE HARNESS (JOYSTICK)
-	E-6416	1	WIRE HARNESS (TWINSTICK)
5	F-1011-01	2	1/4-20 NUT
6	E-6418	1	CABLE, BATTERY TO SOLENOID
7	E-6419	1	CABLE, SOLENOID TO ENGINE
8	E-6417	1	KAWASAKI HARNESS ADAPTER

