

Repair Parts Manual



Zero Turn Radius Mower

CHALLENGER™

505

Congratulations for buying a **Country Clipper** product. Your **Country Clipper** Zero Turn Radius Riding Mower was designed and built to provide long and trouble free service. Keep in mind that it, like any other mechanical device, can be potentially dangerous if used improperly, and hazard control and accident prevention are dependent upon the awareness, concern, prudence, and proper training of personnel involved in the operation, transport, maintenance, and storage of the equipment. Study this manual and pay special attention to the important Safety Precautions on pages 3-5. Following these instructions will help you continue to enjoy the trouble-free performance expected of the **Country Clipper** product.

COUNTRY CLIPPER

CHALLENGER

505

ZERO TURN RADIUS MOWER

TABLE OF CONTENTS

SECTION 1 – MOWER DECKS AND RELATED PARTS

1. 52" MEDIUM DECK ASSEMBLY
2. 60" MEDIUM DECK ASSEMBLY
3. DECK SPINDLE ASSEMBLY
4. DOUBLE IDLER & RELATED PARTS 52" DECK
5. DOUBLE IDLER & RELATED PARTS 60" DECK
6. STATIONARY IDLERS & RELATED PARTS
7. MOLDED CHUTE ASSEMBLY
8. LIFT HANDLE ASSEMBLY & RELATED PARTS
9. LIFT ASSEMBLY & RELATED PARTS
10. TRANSMISSION IDLERS & RELATED PARTS

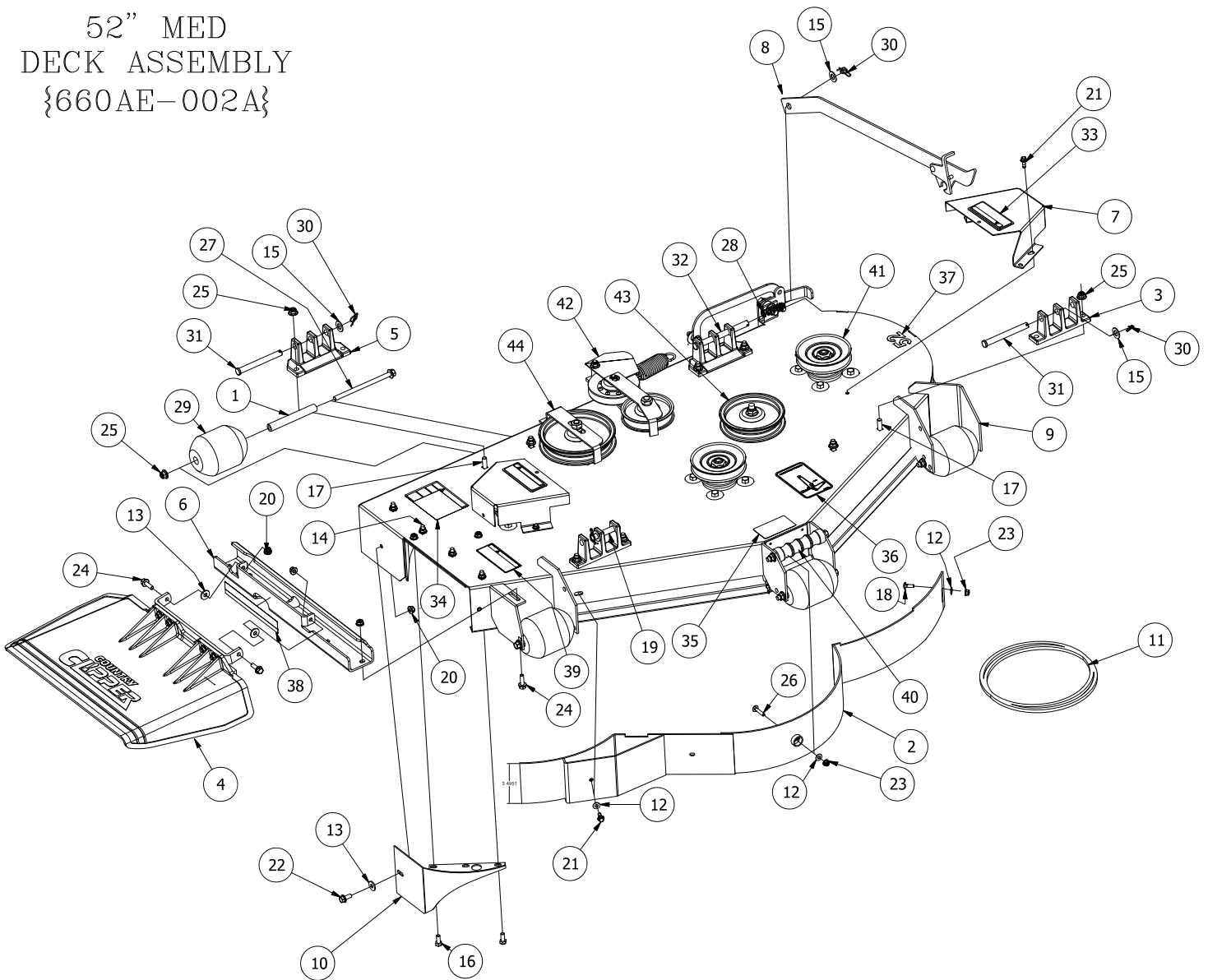
SECTION 2 – TRACTOR FRAME AND RELATED PARTS

11. CASTER WHEEL ASSEMBLY
12. FRAME SIDES & RELATED PARTS
13. FENDER ASSEMBLY
14. SEAT, FOOT DECK ASSEMBLY & RELATED PARTS
15. SEAT, FOOT DECK ASSEMBLY & RELATED PARTS (CON'T)
16. FRONT STEP ASSEMBLY

SECTION 3 – TRACTOR DRIVE AND RELATED PARTS

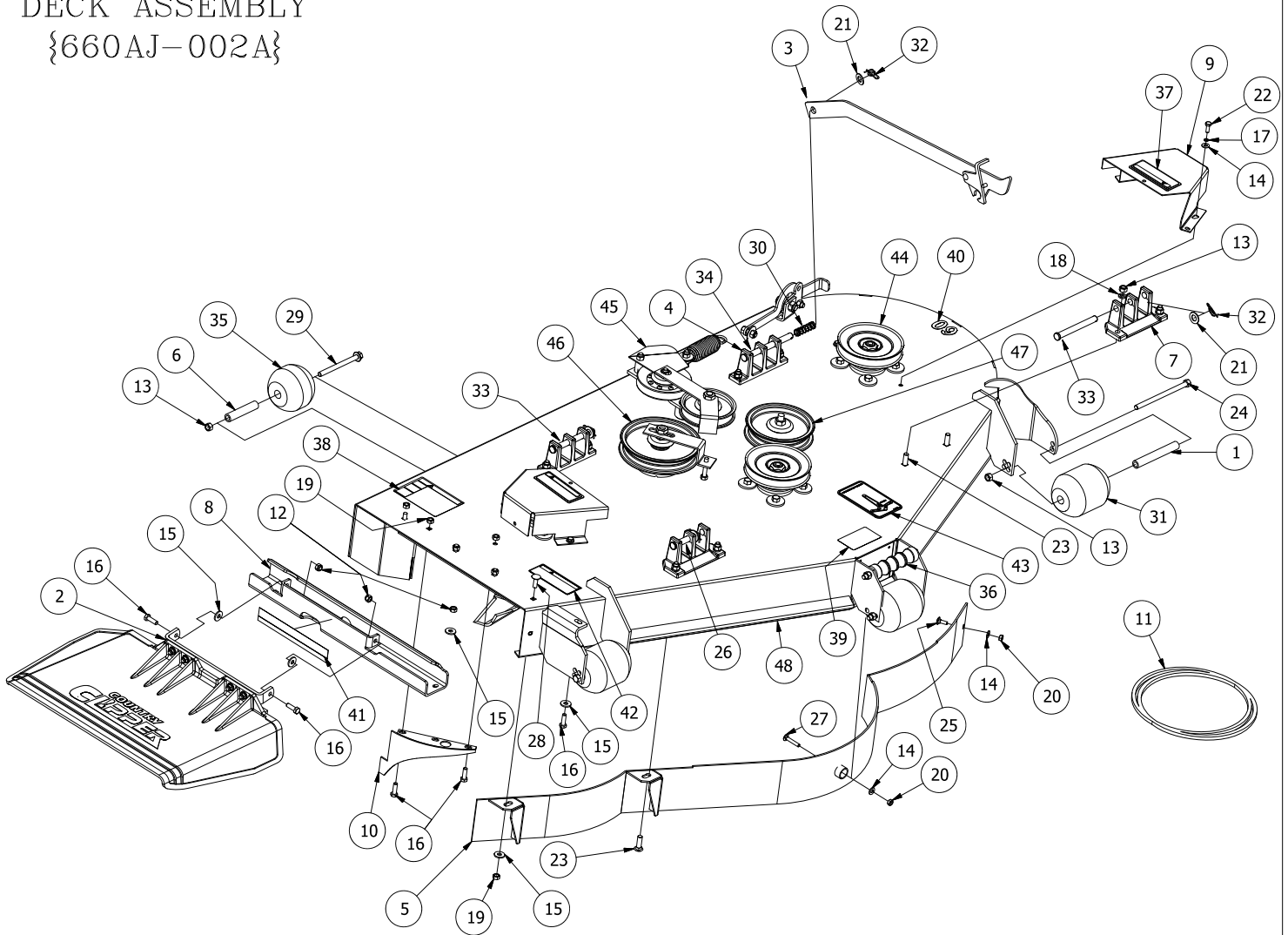
17. FUEL TANK ASSEMBLY
18. JOYSTICK STEERING CONTROL & RELATED PARTS
19. JOYSTICK ASSEMBLY
20. JOYSTICK STEERING CONTROL & RELATED PARTS (CON'T)
21. TWIN STICK STEERING CONTROL & RELATED PART
22. PARKING BRAKE ASSEMBLY & RELATED PARTS
23. MOTOR ASSEMBLY & RELATED PARTS - 24HP KAWASAKI
24. MOTOR ASSEMBLY & RELATED PARTS - 27HP KOHLER
25. MOTOR ASSEMBLY & RELATED PARTS - 30HP BRIGGS & STRATTON
26. E-6415 WIRE HARNESS ASSEMBLY & RELATED PARTS - JOYSTICK
27. E-6416 WIRE HARNESS ASSEMBLY & RELATED PARTS - TWINSTICK
28. E-6417 WIRE HARNESS ASSEMBLY & RELATED PARTS - KAWASAKI
29. E-6436 WIRE HARNESS ADAPTER & RELATED PARTS - BRIGGS

52" MED
DECK ASSEMBLY
{660AE-002A}



REF NO.	PART NO.	QTY.	DESCRIPTION	REF NO.	PART NO.	QTY.	DESCRIPTION
1	609-183P	5	BUSHING	23	F-2132	2	NUT, 1/4-20 NYLOC, FLANGED
2	629-783W	1	WLDT,DUST BAFFLE,52",MEDIUM	24	F-2148	3	FHCS, 5/16-18 x 1.00, YZ, GR5
3	643-016W	2	Hanger Weldment	25	F-2151	21	Nut,3/8-16 Nyloc, Flanged
4	643-111A	1	CHUTE ASS'Y	26	F-2157	1	CARRIAGE BOLT, 1/4 X 1-1/4"
5	651-009W	2	CASTING,HANGER,WIDE BASE	27	F-2161	6	FHCS, 3/8-16 x 6", YZ, GR5
6	660-120P	1	OUTLET STIFFENER, SMALL	28	F-2575	1	SPRING, COMP .656 X .052 X 1.97
7	660-146A	2	PULLEY COVER w/DECALS	29	H-1948	5	Roller, 3-3/4 DIA. x 4-13/16L
8	625-114A	1	DECK PROP ASS'Y	30	H-2239	4	1/2" Rue Ring
9	660-178A	1	52" MEDIUM DECK w/DECALS	31	H-2240	2	1/2" x 4-1/2" Clevis Pin
10	686-080W	1	SPLITTER BAFFLE	32	H-2718	1	1/2" x 5-1/2" Clevis Pin
11	D-3872	1	BELT, B-184	33	P-10935	2	Decal, WARNING
12	F-1009-01	3	1/4" Flat Washer	34	P-10941	1	DECAL "DANGER ROTATING BLADES"
13	F-1009-02	3	5/16" Flat Washer	35	P-11413	1	DECAL, HOIST POINT
14	F-1269	4	5/16-18 x 1"CARRIAGE BOLT	36	P-11932	1	DECAL, JAZEE DECK BELT ROUTING
15	F-1521	6	1/2" WASHER, CUSTOM	37	P-11951	1	DECAL, DECK SIZE, 52
16	F-1546	2	5/16-18 x 3/4" Capscrew	38	P-12496	1	DECAL, MISSING CHUTE
17	F-1672	8	3/8-16 x 1-1/4" Carriage Bolt	39	P-12706	1	WARNING DECAL, DISCHARGE CHUTE
18	F-1823	1	Carriage Bolt, 1/4 X 3/4"	40	H-2787	1	GRIP, DECK HANDLE
19	F-1889	1	1/2 x 2-5/8" Clevis Pin	41	-----	3	PULLESPINDLE ASS'Y (SEE pg.3)
20	F-2063	15	Nut, 5/16-18 Nyloc, Flanged	42	-----	1	DOUBLE IDLER ASS'Y (SEE pg.4)
21	F-2119	5	FHCS, 1/4-20 x 0.75, YZ, LOCK PATCH, GR5	43	-----	1	FRONT IDLER ASS'Y (SEE pg.4)
22	F-2120	1	FHCS, 5/16-18 x 0.75, YZ, GR5	44	-----	1	REAR IDLER ASS'Y (SEE pg.4)

60" MED
DECK ASSEMBLY
{660AJ-002A}

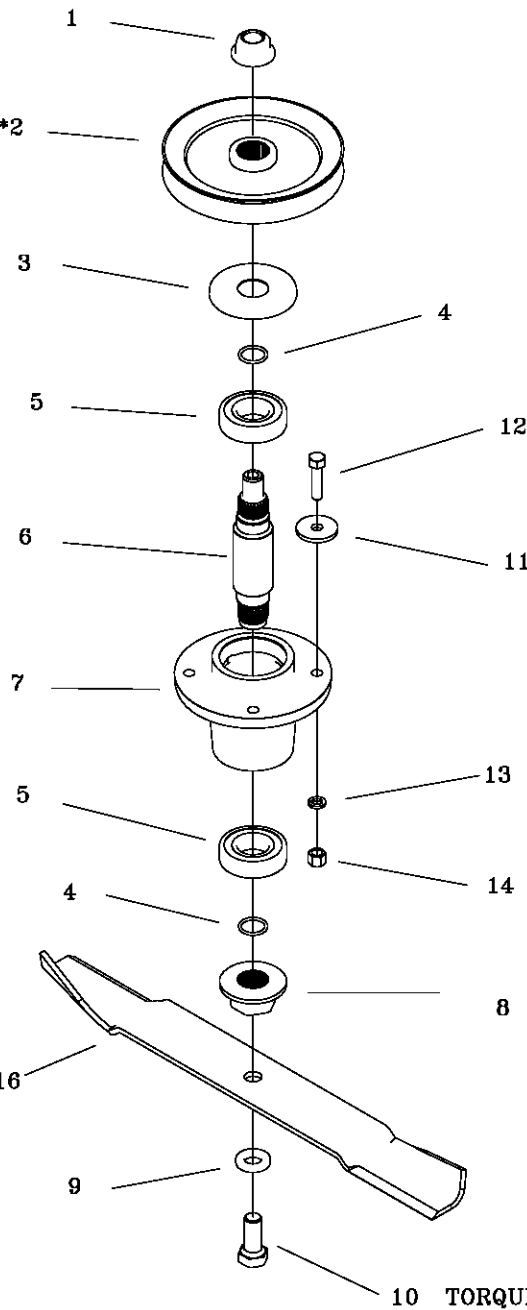


REF NO.	PART NO.	QTY.	DESCRIPTION	REF NO.	PART NO.	QTY.	DESCRIPTION
1	609-183P	3	BUSHING	25	F-1823	1	Carriage Bolt, 1/4 X 3/4"
2	643-111A	1	CHUTE ASS'Y	26	F-1889	1	1/2 x 2-5/8" Clevis Pin
3	625-114A	1	DECK PROP ASS'Y	27	F-1935	1	CARRIAGE BOLT, 1/4 X 1-1/2"
4	643-016W	2	Hanger Weldment	28	F-2066	5	5/16-18 x 1" CARRIAGE BOLT,
5	643-104W	1	60" DUST BAFFLE WELDMENT	29	F-2160	2	FHCS, 3/8-16 x 4 1/2", YZ, GR5
6	643-126P	2	BUSHING	30	F-2575	1	SPRING, COMP .656 X .052 X 1.97
7	651-009W	2	CASTING, HANGER, WIDE BASE	31	H-1948	3	Roller, 3-3/4 DIA. x 4-13/16L
8	660-120P	1	OUTLET STIFFENER, SMALL	32	H-2239	4	1/2" Rue Ring
9	660-139P	2	COVER, PULLEY, SPLD SPIND	33	H-2240	2	1/2" x 4-1/2" Clevis Pin
10	686-006W	1	SPLITTER BAFFLE	34	H-2718	1	1/2" x 5-1/2" Clevis Pin
11	D-3776-W	1	BELT, B-180	35	H-2772	2	Roller, 3-3/4 DIA. x 3 1/4"L
12	F-1005-02	2	5/16-18 Nyloc Nut	36	H-2787	1	GRIP, DECK HANDLE
13	F-1005-03	23	3/8-16 Stover Nut	37	P-10935	2	Decal, WARNING
14	F-1009-01	6	1/4" Flat Washer	38	P-10941	1	DECAL "DANGER ROTATING BLADES"
15	F-1009-02	5	5/16" Flat Washer	39	P-11413	1	DECAL, HOIST POINT
16	F-1015-15	5	1/4-20 Stover Nut	40	P-11952	1	DECAL, DECK SIZE, 60
17	F-1019-01	4	1/4" LockWasher	41	P-12496	1	DECAL, MISSING CHUTE
18	F-1019-03	20	3/8" LOCKWASHER	42	P-12706	1	WARNING DECAL, DISCHARGE CHUTE
19	F-1125	8	5/16-18 Stover Nut	43	P-12837	1	DECAL, DECK BELT ROUTING
20	F-1158	2	1/4-20 Stover Nut	44	-----	3	SPINDLE ASS'Y (SEE pg.3)
21	F-1521	6	1/2" WASHER, CUSTOM	45	-----	1	DOUBLE IDLER ASS'Y (SEE pg.4)
22	F-1538	4	1/4-20 x 3/4" Capscrew	46	-----	1	REAR IDLER ASS'Y (SEE pg.4)
23	F-1672	8	3/8-16 x 1-1/4" Carriage Bolt	47	-----	1	FRONT IDLER ASS'Y (SEE pg.4)
24	F-2161	4	FHCS, 3/8-16 x 6", YZ, GR5	48	660-189A	1	60" MEDIUM DECK w/ DECALS

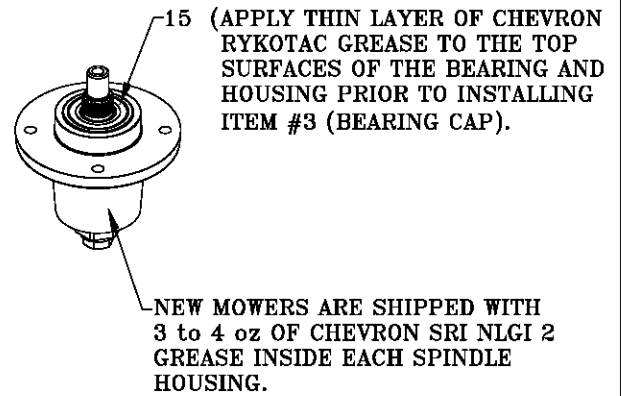
TORQUE TO 140 ft-lb

DECK SPINDLE ASSEMBLY 629FN-001A

PULLEY NOT INCLUDED *2
IN ASSEMBLY



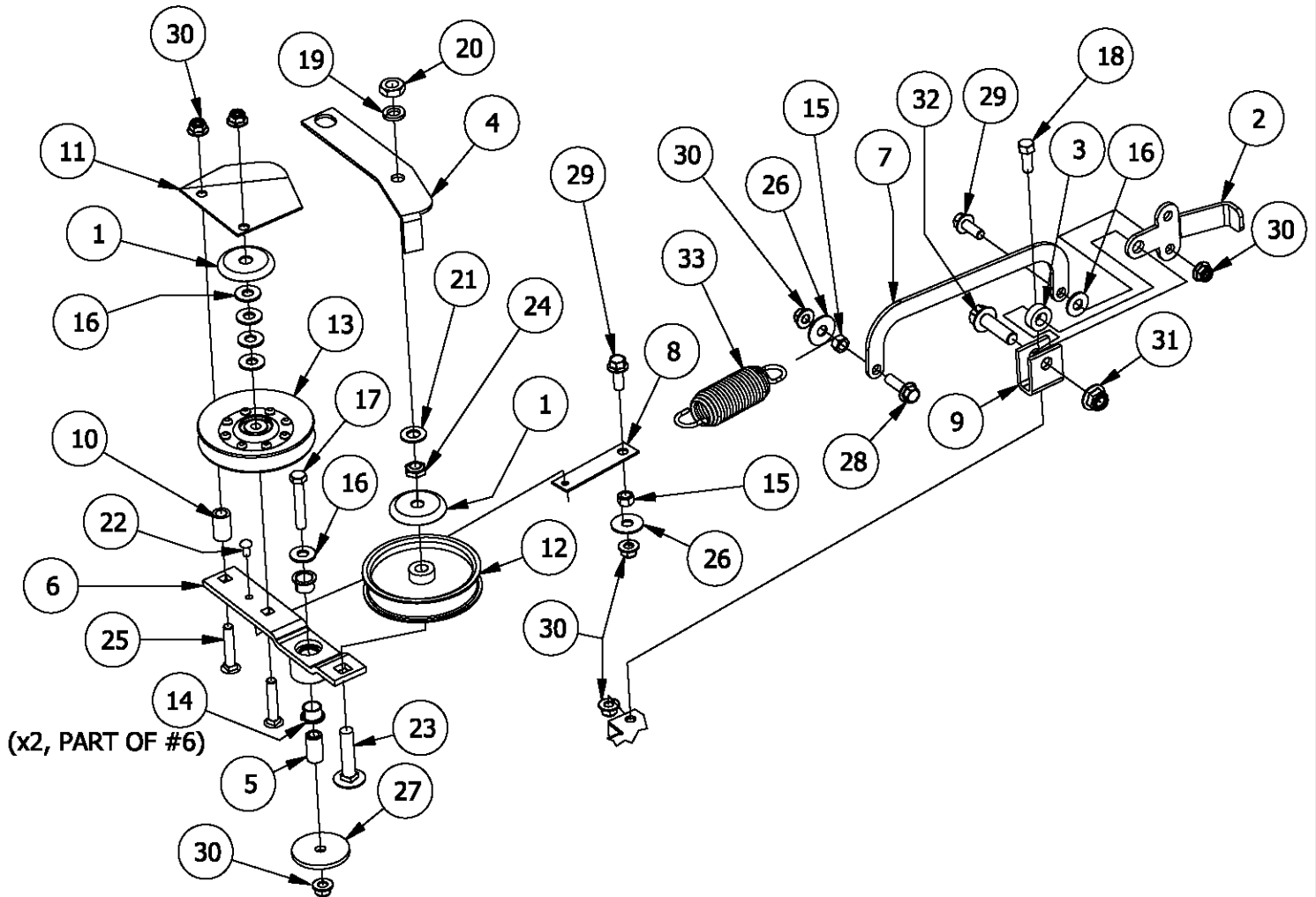
BLADE NOT INCLUDED *16
IN ASSEMBLY



10 TORQUE TO 100 ft-lb

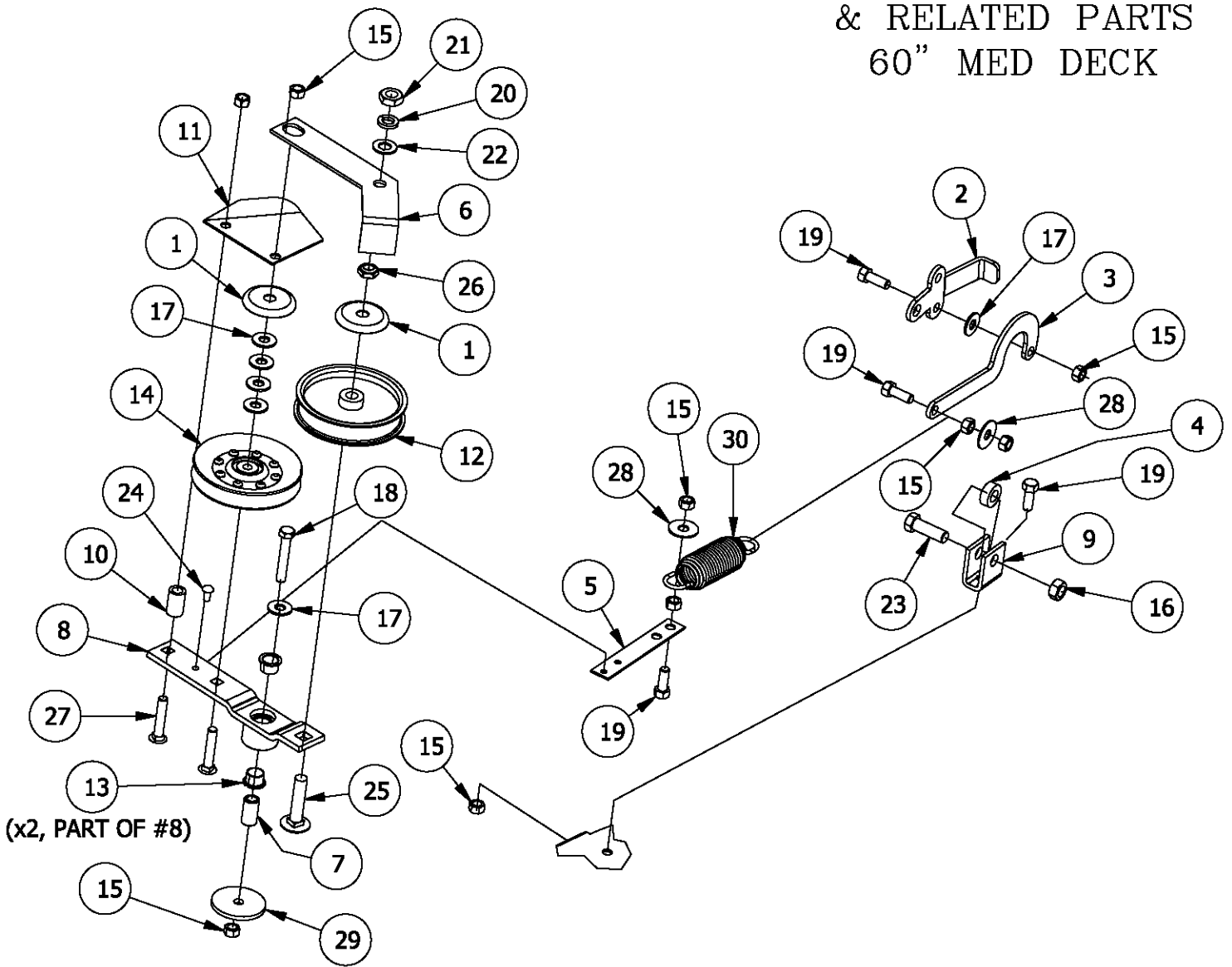
REF NO.	PART NO.	QTY.	DESCRIPTION	REF NO.	PART NO.	QTY.	DESCRIPTION
1	F-2078	1	3/4-6 TOP LOCK NUT	15	H-2707	1	GREASE PACKET
2	668-038P	*	52" DECK CENTER PULLEY	16	H-2654	-	BLADE, HIGH L, 18 3/8" CUT 52"
*	668-039P	*	60" DECK CENTER PULLEY		H-2655	-	BLADE, HIGH L, 21" CUT 60"
3	609-292P	1	CAP, BEARING	OPTIONAL BLADES			
4	H-2639	2	O'RING, RUBBER				
5	D-3867	2	BEARING, #6206				
6	609-289P	1	SHAFT, SPINDLE				
7	609-285P	1	HOUSING, SPINDLE				
8	609-288P	1	BLADE DRIVER				
9	660-099P	1	BLADE WASHER				
10	F-2073	1	5/8-11 X 1.5 HHCS GR. 8				
11	609-034P	4	SPINDLE SPACER, WASHER		H-2660	-	BLADE, LOW L, 18 3/8" CUT, 52"
12	F-1572	4	3/8-24 X 1.5 CAP SCREW		H-2661	-	BLADE, LOW L, 21" CUT, 60"
13	F-1019-03	4	3/8 LOCK WASHER		H-2666	-	BLADE, GATOR, 18 3/8" CUT 52"
14	F-1573	4	3/8-24 LOCK NUT		H-2667	-	BLADE, GATOR, 21" CUT 60"

DOUBLE IDLER DRIVE BELT IDLER & RELATED PARTS 52" MED DECK



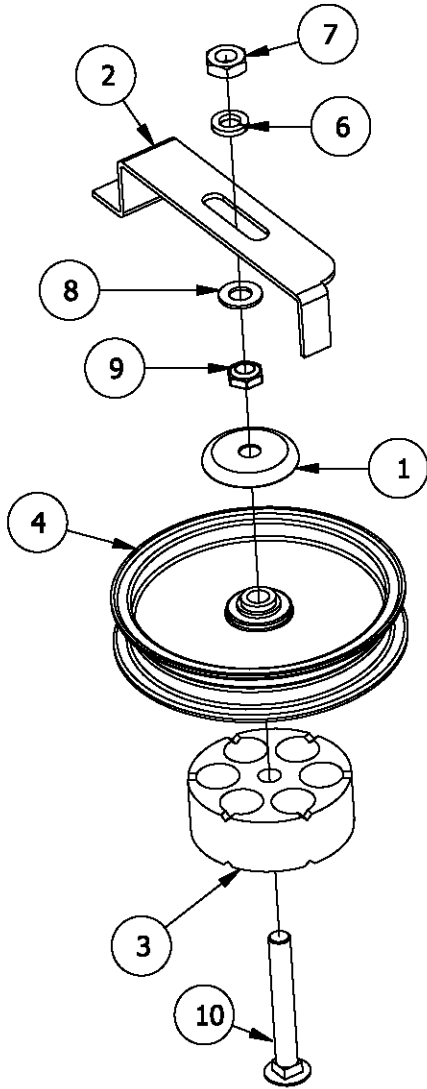
REF NO.	PART NO.	QTY.	DESCRIPTION	REF NO.	PART NO.	QTY.	DESCRIPTION
1	620-201P	4	WASHER, BEARING CAP	18	F-1394	1	3/8-16 x 1" Capscrew
2	660-030P	1	Belt Tightner Handle	19	F-1464	2	1/2" LOCKWASHER
3	660-038P	1	3/8" Spacer	20	F-1489	2	1/2-13 Hex Jam Nut
4	660-107P	1	BELT KEEPER	21	F-1521	6	1/2" WASHER, CUSTOM
5	660-135P	1	MOUNTING PIN	22	F-1733	1	1/4" x 1/2" DRIVE SCREW
6	660-147A	1	IDLER ARM ASSEMBLY	23	F-1822	1	1/2-13 X 2-1/4" CARRIAGE BOLT
7	660-172P	1	LINK, BELT TENSION	24	F-1966	2	1/2-13 THIN NYLOC NUT
8	660-173P	1	SPRING EXTENSION	25	F-1976	2	3/8-16 x 2" Carriage Bolt
9	661-015P	1	SHACKLE	26	F-2083	2	WASHER, 3/8 FENDER
10	668-021P	1	SPACER, BELT GUARD	27	F-2102	1	WASHER.406ID X 2.25OD X 7GA THK
11	668-029P	1	BELT GUARD	28	F-2125	1	FHCS, 3/8-16 x 1.25, YZ, GR5
12	D-3338	1	Pulley flat idler 1/2" Bore 4"	29	F-2141	2	FHCS, 3/8-16 x 1", YZ, GR5
13	D-3758	1	PULLEY V-IDLER 4.48 O.D. 3/8 HOLE	30	F-2151	21	Nut,3/8-16 Nyloc, Flanged
14	D-3730	2	FLANGED BUSHING	31	F-2152	2	Nut,1/2-13 Nyloc, Flanged
15	F-1005-03	2	3/8-16 Stover Nut	32	F-2154	1	FHCS, 1/2-13 x1-3/4", YZ, GR5
16	F-1009-03	6	3/8" Flat Washer	33	H-2619	1	SPRING,5 X 1-1/2,TAPERED ENDS
17	F-1268	1	3/8-16 x2-1/4" Capscrew				

DOUBLE IDLER DRIVE BELT IDLER & RELATED PARTS 60" MED DECK

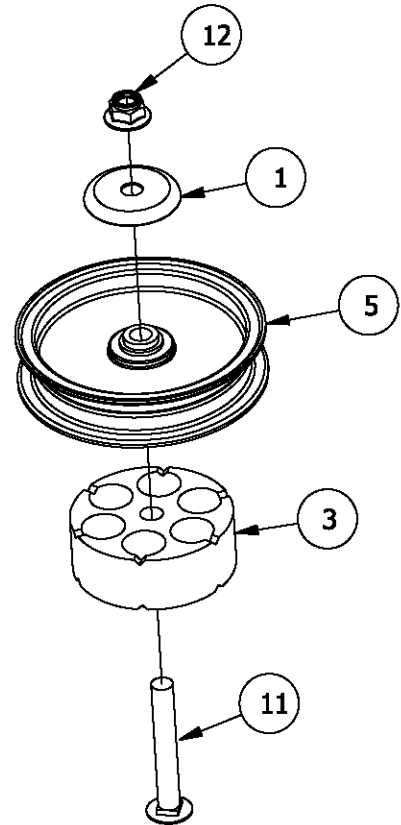


REF NO.	PART NO.	QTY.	DESCRIPTION	REF NO.	PART NO.	QTY.	DESCRIPTION
1	620-201P	4	WASHER, BEARING CAP	16	F-1005-05	2	1/2-13 Stover Nut
2	660-030P	1	Belt Tightner Handle	17	F-1009-03	6	3/8" Flat Washer
3	660-031P	1	Belt Tightner Arm	18	F-1268	1	3/8-16 x2-1/4" Capscrew
4	660-038P	1	3/8" Spacer	19	F-1394	4	3/8-16 x 1" Capscrew
5	660-081P	1	EXTENSION FOR SPRING	20	F-1464	2	1/2" LOCKWASHER
6	660-110P	1	BELT KEEPER, B BELT	21	F-1489	2	1/2-13 Hex Jam Nut
7	660-135P	1	MOUNTING PIN	22	F-1521	6	1/2" WASHER, CUSTOM
8	660-147A	1	IDLER ARM ASSEMBLY	23	F-1526	1	1/2-13 x1-1/2" Capscrew
9	661-015P	1	SHACKLE	24	F-1733	1	1/4" x 1/2" DRIVE SCREW
10	668-021P	1	SPACER, BELT GUARD	25	F-1822	1	1/2-13 X 2-1/4" CARRIAGE BOLT
11	668-029P	1	BELT GUARD	26	F-1966	2	1/2-13 THIN NYLOC NUT
12	D-3338	1	Pulley flat idler 1/2" Bore 4"	27	F-1976	2	3/8-16 x 2" Carraige Bolt
13	D-3730	1	1/2" x 5-1/2" Clevis Pin	28	F-2083	2	WASHER, 3/8 FENDER
14	D-3758	1	PULLEY V-IDLER 4.48 O.D. 3/8 HOLE	29	F-2102	2	WASHER.406ID X 2.25OD X 7GA THK
15	F-1005-03	23	3/8-16 Stover Nut	30	H-2619	1	SPRING,5 X 1-1/2,TAPERED ENDS

RIGHT REAR STATIONARY IDLER ASSEMBLY

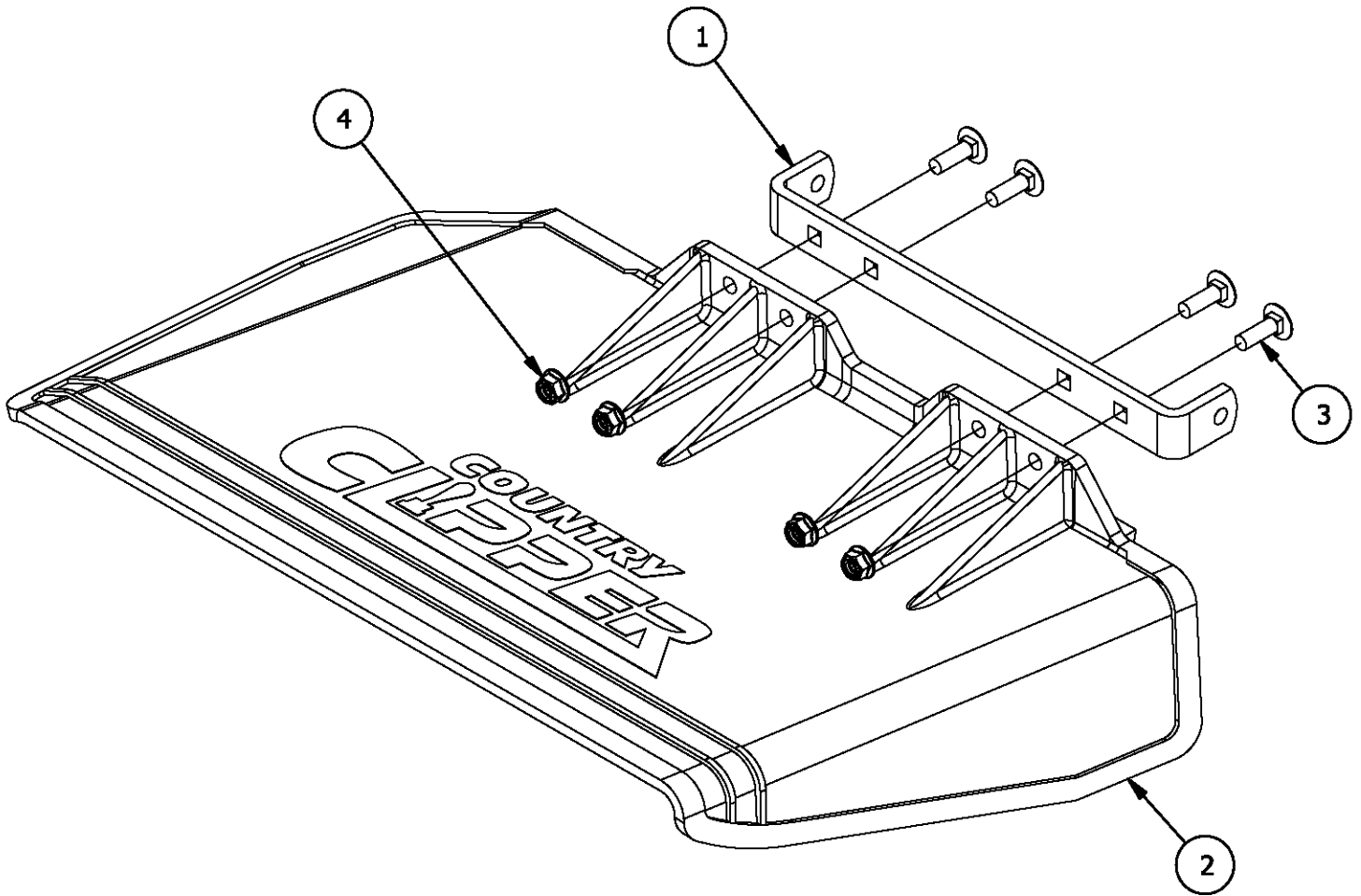


FRONT STATIONARY IDLER ASSEMBLY



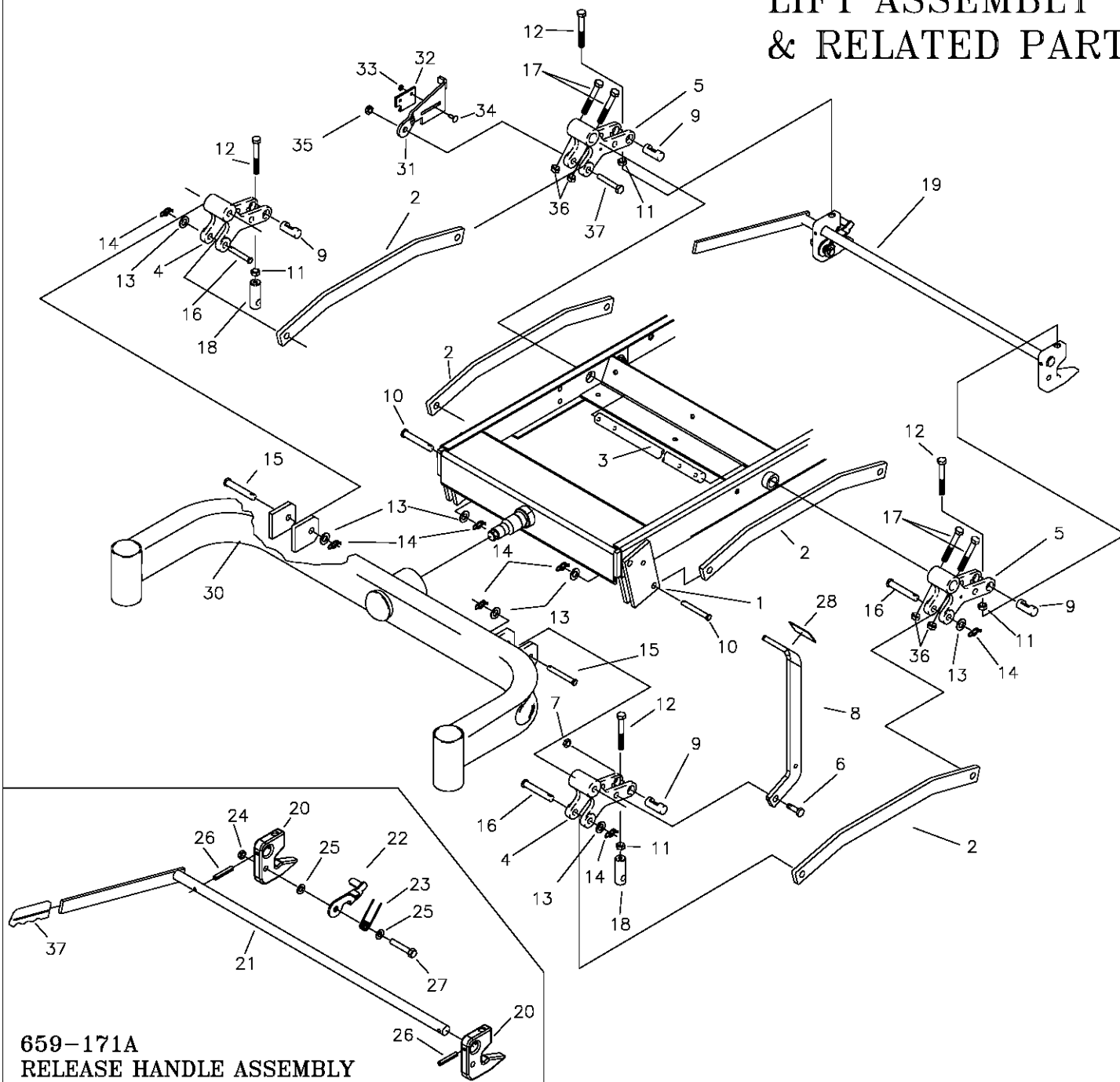
REF NO.	PART NO.	QTY.	DESCRIPTION	REF NO.	PART NO.	QTY.	DESCRIPTION
1	620-201P	4	WASHER, BEARING CAP	7	F-1489	2	1/2-13 Hex Jam Nut
2	660-112P	1	BELT KEEPER	8	F-1521	6	1/2" WASHER, CUSTOM
3	660-148P	2	SPACER, IDLER MOUNT	9	F-1966	2	1/2-13 THIN NYLOC NUT
4	D-3903	1	PULLEY, FLAT IDLER, 6"	10	F-2079	1	CARRIAGE BOLT 1/2-13 X 3-3/4"
5	D-3904	1	PULLEY, FLAT IDLER, 5"	11	F-2106	1	1/2-13 X 3-1/2" CARRIAGE BOLT
6	F-1464	2	1/2" LOCKWASHER	12	F-2152	2	Nut, 1/2-13 Nyloc, Flanged

MOLDED CHUTE ASSEMBLY
 {643-111A}



REF NO.	PART NO.	QTY.	DESCRIPTION
1	643-110P	1	CHUTE HINGE
2	H-2723	1	Chute, Discharge, Small
3	F-2066	4	5/16-18 x 1" CARRIAGE BOLT,
4	F-2063	4	Nut, 5/16-18 Nyloc, Flanged

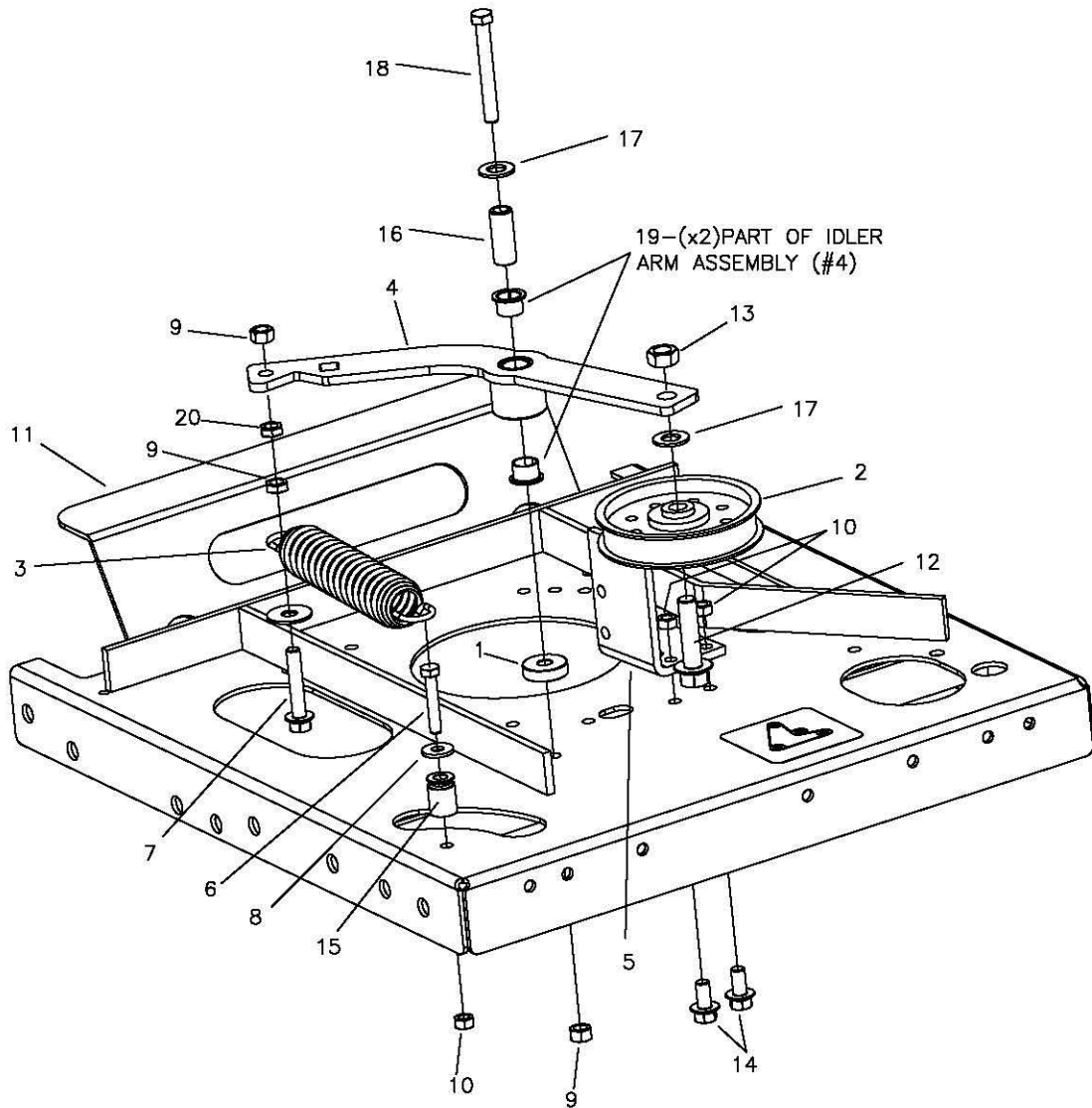
LIFT ASSEMBLY & RELATED PARTS



**659-171A
RELEASE HANDLE ASSEMBLY**

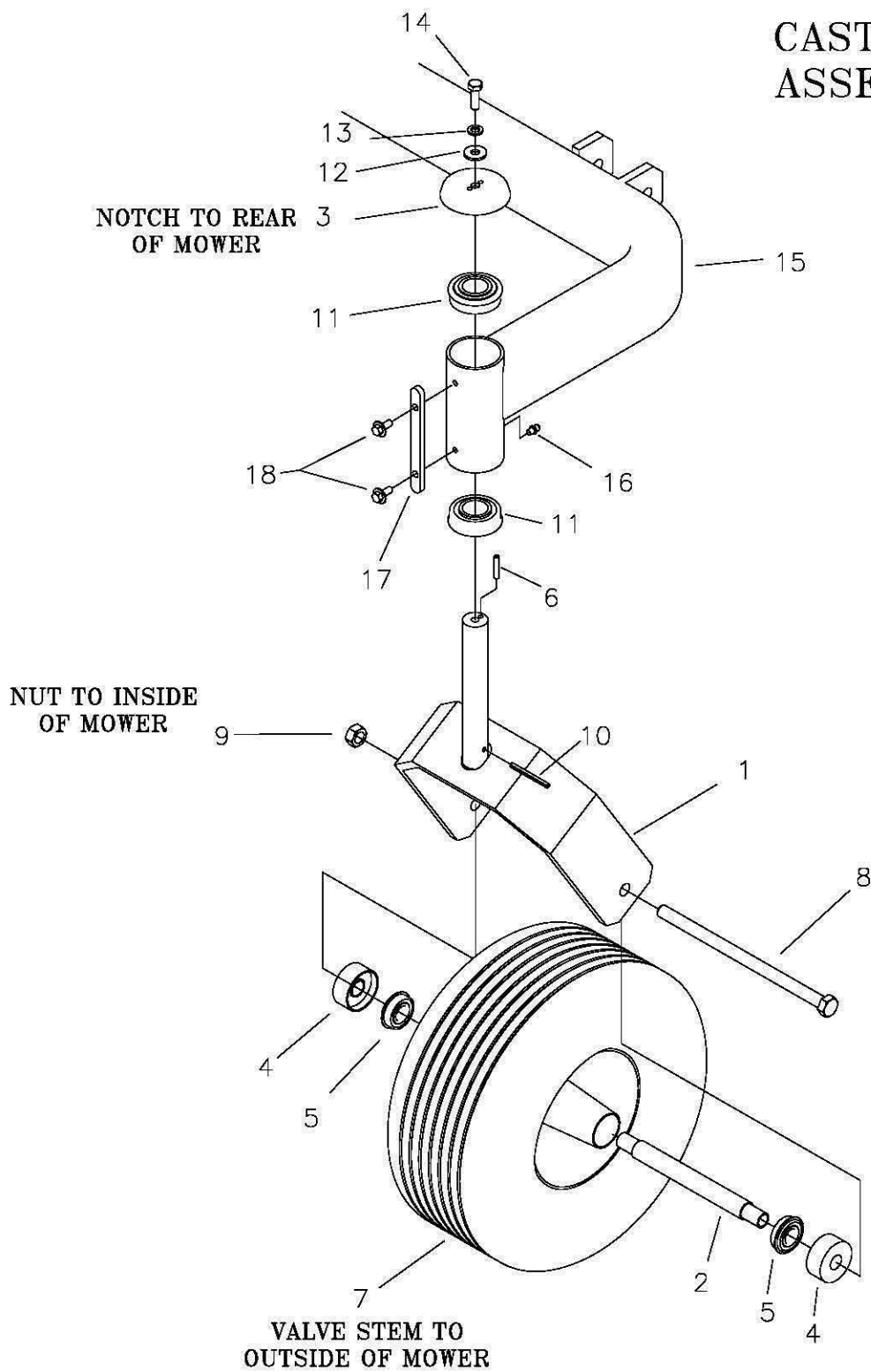
REF NO.	PART NO.	QTY.	DESCRIPTION	REF NO.	PART NO.	QTY.	DESCRIPTION
1	642-063P	4	DRAG BAR TAB	20	659-140P	2	DECK HOOK
2	659-299P	4	DRAG LINK BAR	21	659-148W	1	RELEASE HANDLE WELDMENT
3	620-051P	1	LIFT BAR	22	659-145P	1	HOOK KEEPER
4	642-081P	2	LIFT SLEEVE, FRONT	23	H-2547	1	SPRING, TORSION
5	642-193P	2	LIFT SLEEVE, REAR	24	F-1005-03	1	NUT, 3/8-16, STOVER
6	F-1879	1	5/16-18 X 1 1/4" GR.5	25	F-1009-03	2	WASHER, FLAT, 3/8"
7	F-1125	1	5/16-18 STOVER NUT	26	F-2009	2	SPIROL ROLL PIN 1/4 X 1-1/2
8	659-056P	1	DECK LIFT PEDAL	27	F-1073	1	CAPSCREW, 3/8-16 X 2, GR. 5
9	642-177P	4	HANGER PIN	28	H-2401	1	TREAD PAD
10	F-1815	2	CLEVIS PIN, 1/2 X 1 1/2"	29	H-1926	1	1/4"x1" HANDLE GRIP
11	F-1489	4	NUT. 1/2" JAM	30	659-287W	1	FRONT AXLE WELDMENT
12	F-1936	4	1/2-13 X 3 1/2, 2" THREAD	31	663-089P	1	LATCH PLATE
13	F-1521	7	WASHER, 1/2 NARROW	32	659-170P	1	PLATE, CATCH
14	H-2239	7	RUE RING, 1/2"	33	F-1158	2	NUT, 1/4" STOVER
15	F-1890	2	CLEVIS PIN, 1/2 X 3 1/2"	34	F-1823	2	CARRIAGE BOLT, 1/4-20 X 3/4"
16	F-1898	3	CLEVIS PIN, 1/2 X 2 3/4"	35	F-1005-05	1	1/2" STOVER NUT
17	F-2039	4	5/16-24 x 2" HHCS	36	F-2041	4	5/16-24 JAM NUT
18	642-175P	2	ADJUSTABLE HANGER END	37	F-1828	1	1/2-13 x 3-1/2" CAPSCREW
19	659-171A	1	RELEASE HANDLE ASSEMBLY				

TRANSMISSION IDLERS & RELATED PARTS



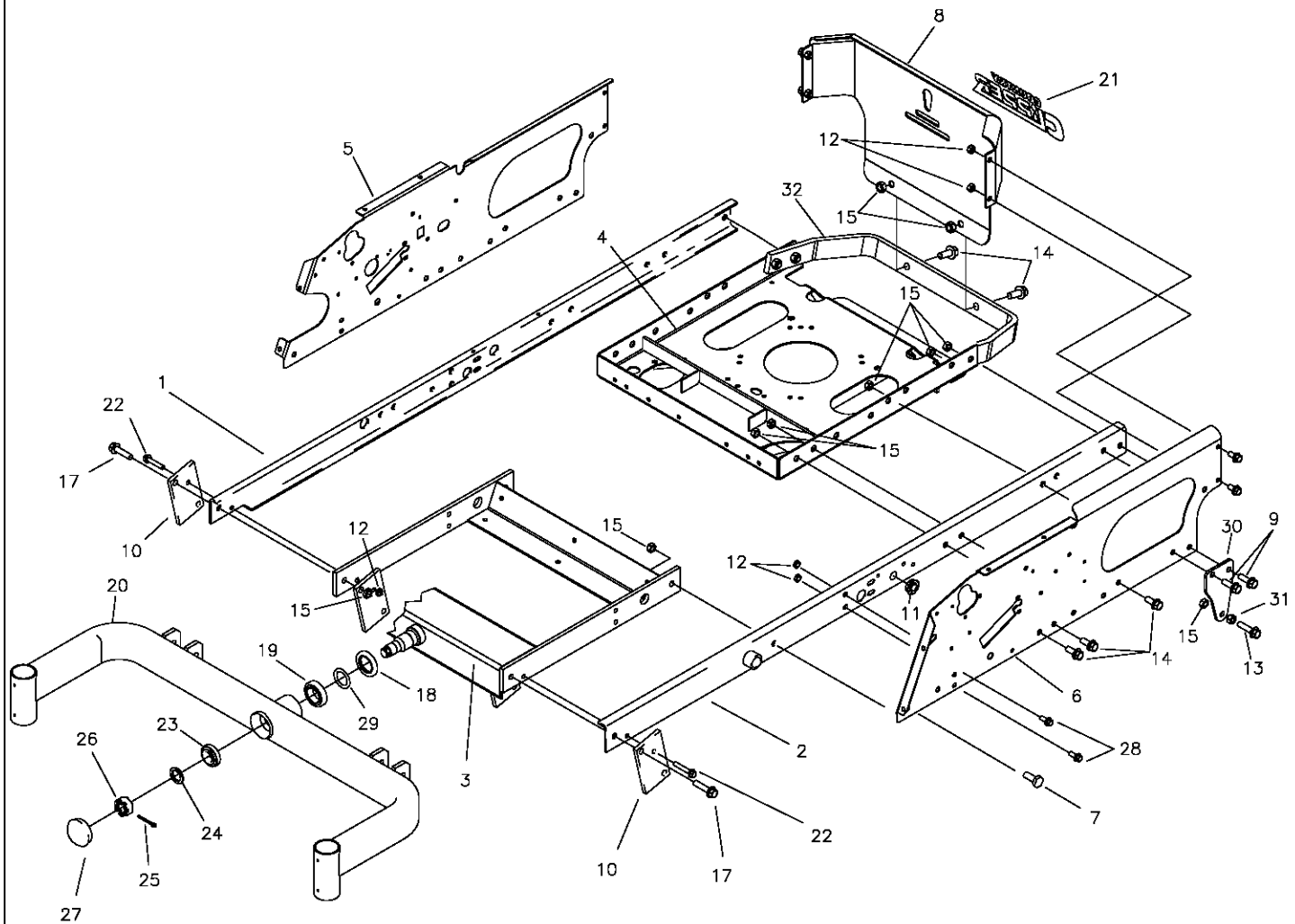
ITEM #	PART #	QTY	DESCRIPTION	ITEM #	PART #	QTY	DESCRIPTION
1	707-022P	1	SPACER	11	707-009W	1	MOTOR MOUNT WELDMENT
2	D-3922	1	PULLEY, FLAT IDLER, 1/2" BORE, 4"	12	F-2128	1	FHCS, 1/2-13 x 2" GR.5
3	H-2907	1	SPRING, 5.43 X 1-1/2, TAPERED ENDS	13	F-1005-05	1	1/2-13 STOVER NUT
4	707-012A	1	IDLER ARM ASSEMBLY	14	F-2120	2	FHCS, 5/16-16 x 3/4" GR.5
5	707-033P	1	CLUTCH STOP	15	707-084P	1	TUBE, SPRING MOUNT
6	F-1015-18	1	5/16-18 x 1-3/4" CAPSCREW	16	659-085P	1	MOUNTING PIN
7	F-1015-27	1	3/8-16 X 1-1/2" GR. 5	17	F-1521	2	1/2" FLAT WASHER
8	F-1009-02	1	5/16" FLAT WASHER	18	F-1537	1	3/8-16 x 3" CAPSCREW
9	F-1005-03	6	3/8-16 STOVER LOCK NUT	19	D-3730	2	FLANGED BUSHING
10	F-1125	3	5/16" LOCK NUT	20	F-1486	1	JAM NUT, 3/8-16

CASTER WHEEL ASSEMBLY



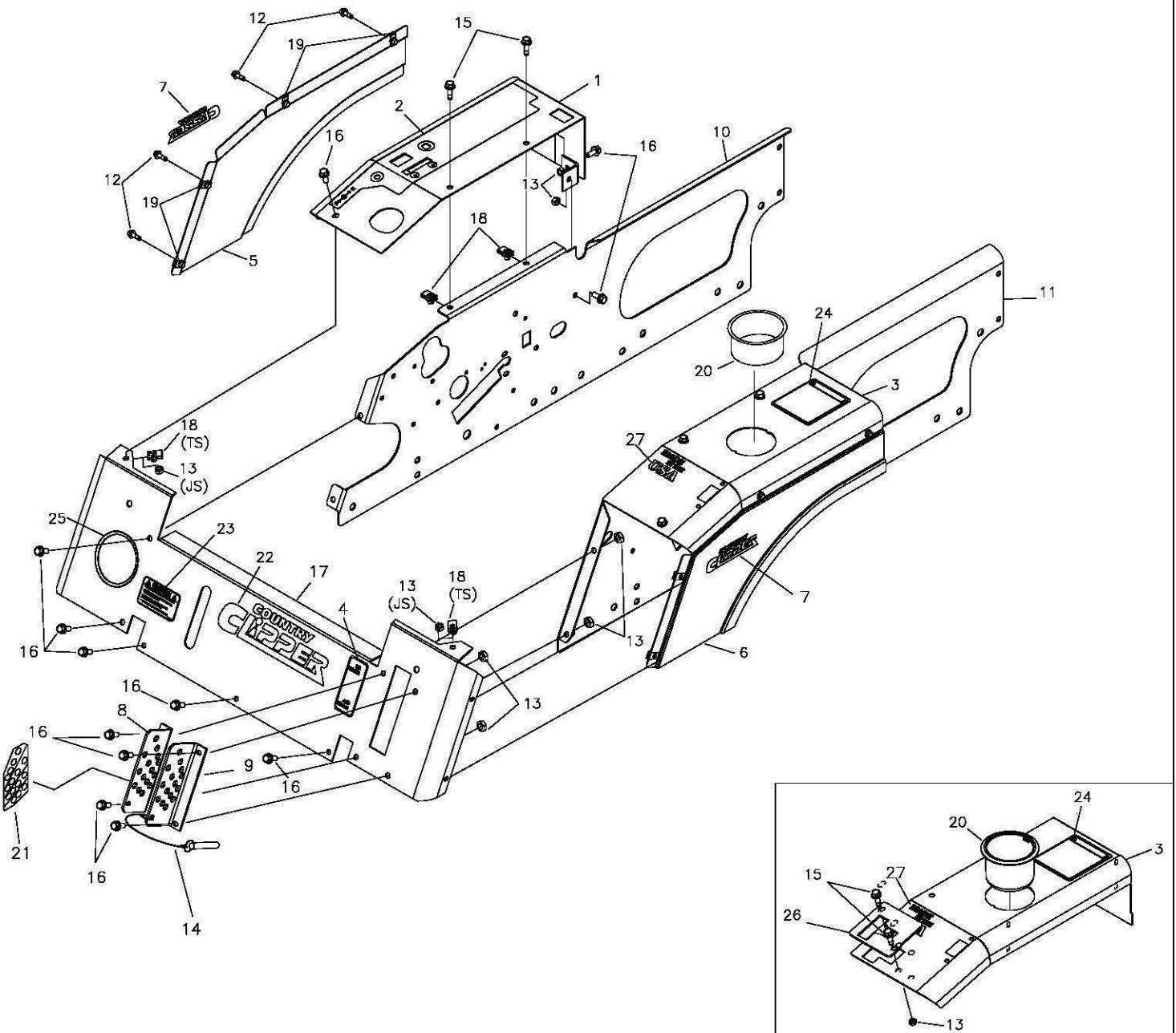
REF NO.	PART NO.	QTY.	DESCRIPTION	REF NO.	PART NO.	QTY.	DESCRIPTION
1	647-192W	2	CASTER WELDMENT	10	F-1456	2	3/16 ROLL PIN
2	647-038P	2	BEARING SPACER	11	D-2008-02	4	BEARING, SPD SF-16-32
3	636-176P	2	BEARING CAP	12	F-1009-02	2	5/16" FLAT WASHER
4	611-135P	4	BEARING SHIELD	13	F-1019-02	2	5/16" LOCK WASHER
5	D-3432	4	BEARING, 5/8 ID X 1 3/8 OD	14	F-1863	2	5/16-18 x 1" W/NYLON PATCH
6	F-1855	2	3/16" X 1" ROLL PIN	15	659-287W	1	FRONT AXLE WELDMENT
7	D-3670	2	FRONT TIRE/WHEEL	16	H-1056	2	GREASE ZERK
8	F-1908	2	1/2-13 X 6 1/2" GR. 5 BOLT	17	659-185P	2	STOP TAB
9	F-1005-05	2	1/2-13 LOCK NUT	18	F-2030	4	1/4" X 5/8" SELF TAPPING SCREW

FRAME SIDES & RELATED PARTS



REF NO.	PART NO.	QTY.	DESCRIPTION	REF NO.	PART NO.	QTY.	DESCRIPTION
1	659-021W	1	FRAME SIDE RH.	17	F-2128	2	FHCS, 1/2-13 X 2", GR.5
2	659-022W	1	FRAME SIDE LH.	18	H-2600	1	SEAL SHAFT
3	709-157W	1	AXLE MOUNTING WLDT.	19	D-3825	1	BEARING, TAPARED SET
4	707-009W	1	MOTOR MOUNT WLDT.	20	659-287W	1	FRONT AXLE WELDMENT
5	663-188P	1	SIDE PANEL RH. (JOYSTICK)	21	P-12980	1	DECAL, CC, CHROME, LG
-	663-195P	1	SIDE PANEL RH. (TWINSTICK)	22	F-2126	2	FHCS, 3/8-16 x 2" GR.5
6	663-189P	1	SIDE PANEL LH. (JOYSTICK)	23	D-3826	1	BEARING, TAPARED SET
-	663-196P	1	SIDE PANEL LH. (TWINSTICK)	24	606-303P	1	1" WASHER
7	F-1386	2	1/2-13 X 1-1/4" GR.5	25	F-1728	1	3/16 X 2" COTTER PIN
8	625-131A	1	ENGINE GUARD w/DECAL	26	F-1724	1	1-14 SLOTTED NUT
9	F-2140	4	FHCS, 1/2-13 x 1-1/2" GR.5	27	H-1924	1	GREASE CAP
10	642-063P	2	DRAG BAR TAB	28	F-2125	4	FHCS, 3/8-16 x 1-1/4"
11	H-2773	2	BEARING, FLG-SPHERICAL, IGUS	29	663-074P	1	RING, BACK-UP, STEEL
12	F-1005-03	10	3/8-16 STOVER NUT	30	663-120P	1	PLATE, SPRING MOUNT
13	F-2128	1	FHCS, 1/2-13 x 2 GR.5	31	F-1011-05	1	HEX NUT, 1/2-13
14	F-2127	15	FHCS, 1/2-13 X 1-1/4" GR.5	32	707-003P	1	GUARD, BUMPER
15	F-1005-05	18	1/2-13 LOCK NUT				
16	F-2124	4	FHCS, 3/8-16 X 3/4" GR.5				

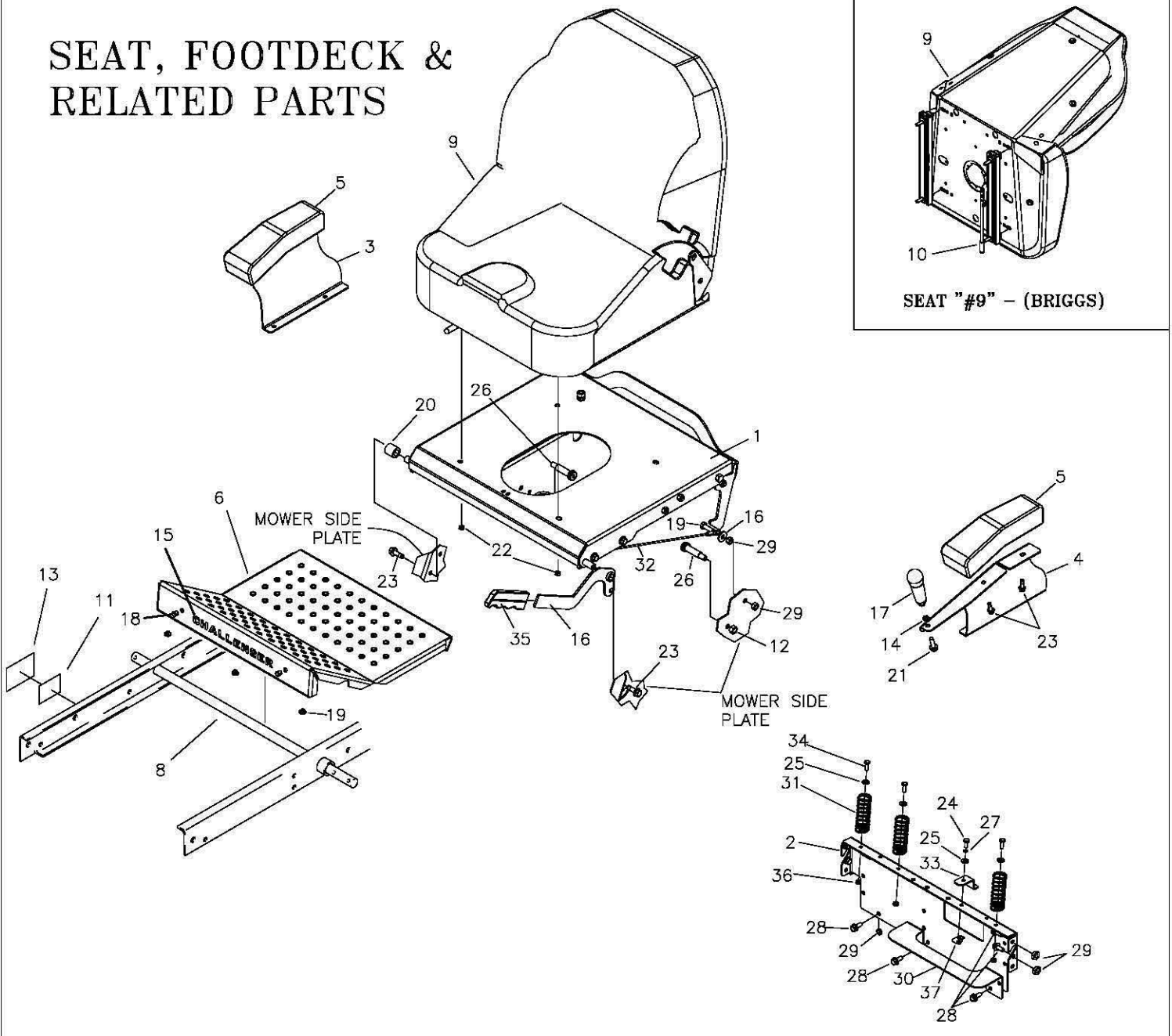
FENDER ASSEMBLY



TWINSTICK FENDER ASSY

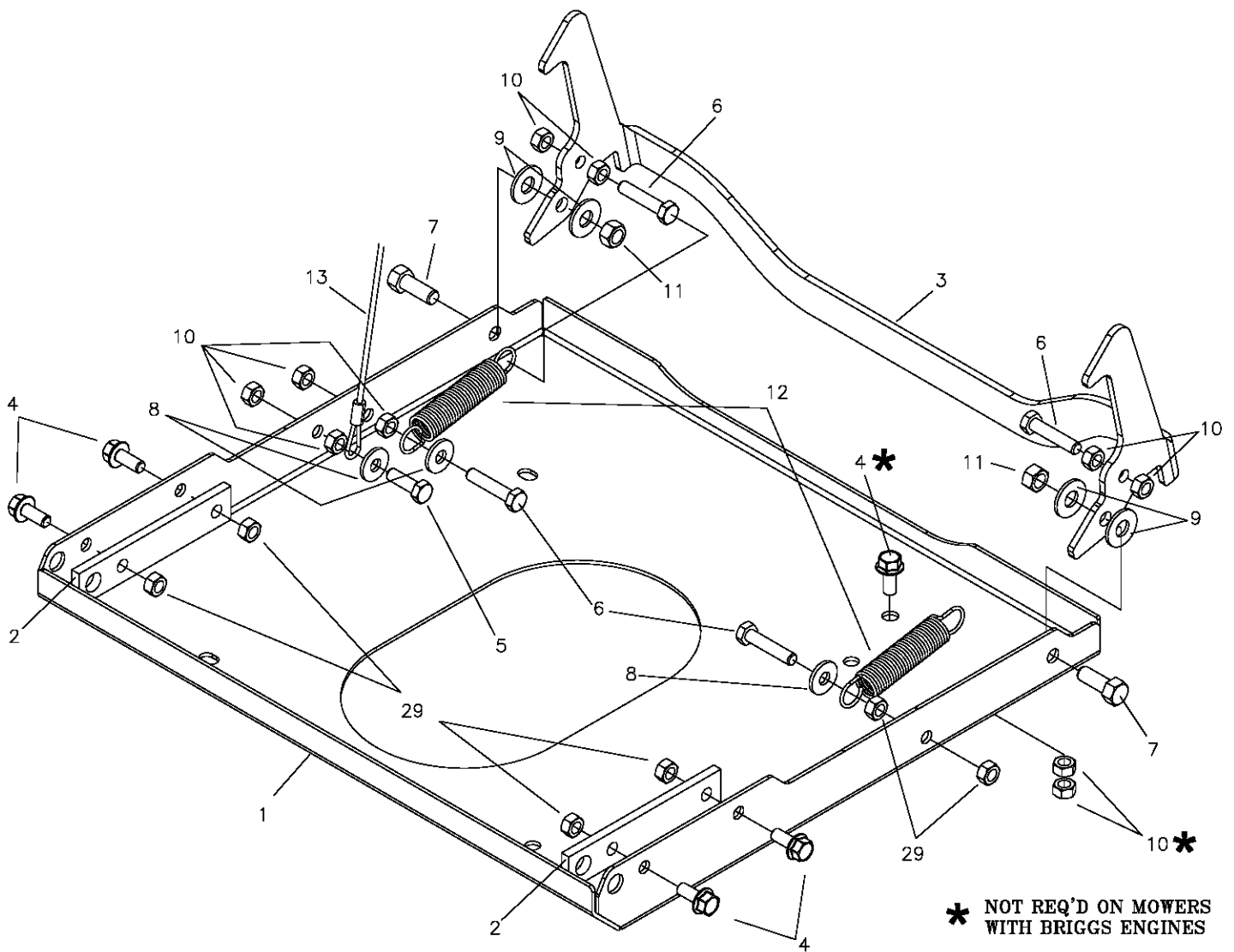
REF NO.	PART NO.	QTY.	DESCRIPTION	REF NO.	PART NO.	QTY.	DESCRIPTION
1	625-133A	1	FENDER CAP w/DECAL, RH, (JOYSTICK)	15	F-2121	8	FHCS, 5/16-18x1" GR.5 w/PATCH
-	625-135A	1	FENDER CAP w/DECAL, RH, (TWINSTICK)	16	F-2120	15	FHCS, 5/16-18 X 3/4" GR.5
2	P-12925	1	DECAL, CONTROL PANEL	17	629-831A	1	FRONT PANEL w/DECALS (BRIGGS)
3	625-134A	1	FENDER CAP w/DECAL, LH (JOYSTICK)	--	629-832A	1	FRONT PANEL w/DECALS (KAW & KOH)
-	625-136A	1	FENDER CAP w/DECAL, LH (TWINSTICK)	18	F-1860	6	5/16-18 "U"-NUT
4	P-11382	1	DECAL, PARK BRAKE	19	F-1858	8	1/4-20 "U"-NUT
5	625-141A	1	FENDER SKIRT w/DECAL, RH	20	H-2228	1	CUP HOLDER
6	625-142A	1	FENDER SKIRT w/DECAL, LH	21	P-12034	1	DECAL, "CUT HEIGHT"
7	P-12979	2	DECAL, CC, CHROME, SM	22	P-12980	1	DECAL, CC CHROME (KAW & KOH)
8	647-097A	1	LATCH PLATE RH W/DECAL	--	P-12097	1	DECAL, CC (BRIGGS)
9	647-095P	1	LATCH PLATE LH.	23	P-12557	1	DECAL, "CAUTION"
10	-----	1	SEE PAGE 12	24	P-11370	1	DECAL, WARNING
11	-----	1	SEE PAGE 12	25	H-1626	1	U CHANNEL TRIM
12	F-2119	8	FHCS, 1/4-20x3/4", GR.5 w/PATCH	26	659-262P	1	NEUTRAL PLATE
13	F-1125	13	5/16-18 LOCK NUT	27	P-13000	1	DECAL, "USA"
14	629-854A	1	LOCK PIN, DECK HEIGHT, ASS'Y				

SEAT, FOOTDECK & RELATED PARTS



REF NO.	PART NO.	QTY.	DESCRIPTION	REF NO.	PART NO.	QTY.	DESCRIPTION
1	707-005P	1	PLATE, SEAT	18	H-1280	2	CAP PLUG, PLASTIC
2	707-039P	1	PLT, REAR SEAT FILLER	19	H-2461	3	RUBBER BUMPER
3	707-047P	1	PLATE, ARM REST RH	20	707-046P	1	SPACER, SEAT PAN
4	707-070P	1	PLATE, ARM REST LH (JOYSTICK)	21	F-2125	1	FHCS, 5/16-18x1-1/4" GR5
-	707-048P	1	PLATE, ARM REST LH (TWINSTICK)	22	F-2063	4	3/8-16 NYLOC NUT, FLANGED
5	H-2763	2	PAD, ARM REST	23	F-2121	6	FHCS 5/16-18x1" w/PATCH
6	629-833A	1	FOOT DECK w/DECALS (BRIGGS)	24	F-1015-02	1	1/4-20 X 5/8", GR.5
-	629-834A	1	FOOT DECK w/DECALS (KAW & KOH)	25	F-1009-01	5	1/4" FLAT WASHER
7	707-043P	1	PIN, SEAT HINGE	26	F-1783	2	1/2"x1-1/2" SHOULDER BOLT, SOCKET
8	620-051P	1	LIFT BAR	27	F-1019-01	1	1/4" LOCK WASHER
9	H-2754	1	SEAT (KAWASAKI & KOHLER)	28	F-2120	8	FHCS, 5/16-18x3/4" GR5
-	H-2604	1	SEAT (BRIGGS)	29	F-1125	18	5/16-18 STOVER NUT
10	H-2760	1	TRACK KIT	30	707-066P	1	SHELF, REAR, FUEL TANK
11	P-12940	1	SERIAL TAG	31	H-1920	3	SPRING, ASSIST
12	F-1005-03	2	3/8-16 LOCK NUT	32	H-2460	1	CABLE
13	P-12473	1	SERIAL TAG LAMINATION DECAL	33	659-137P	1	BATTERY HOLD DOWN
14	F-1486	1	3/8-16 JAM NUT	34	F-1538	3	1/4-20x3/4" CAPSCREW
15	P-12942	1	DECAL, CHALLENGER (BRIGGS)	35	H-1926	1	HANDLE, GRIP
-	P-12981	1	DECAL, CHALLENGER (KAW & KOH)	36	F-1005-01	1	1/4-20 STOVER NUT
16	707-042W	1	BRAKE HANDLE	37	F-1858	1	1/4-20 "U" NUT
17	H-2764	1	HANDLE, JOYSTICK				

SEAT, FOOTDECK & RELATED PARTS (CON'T)

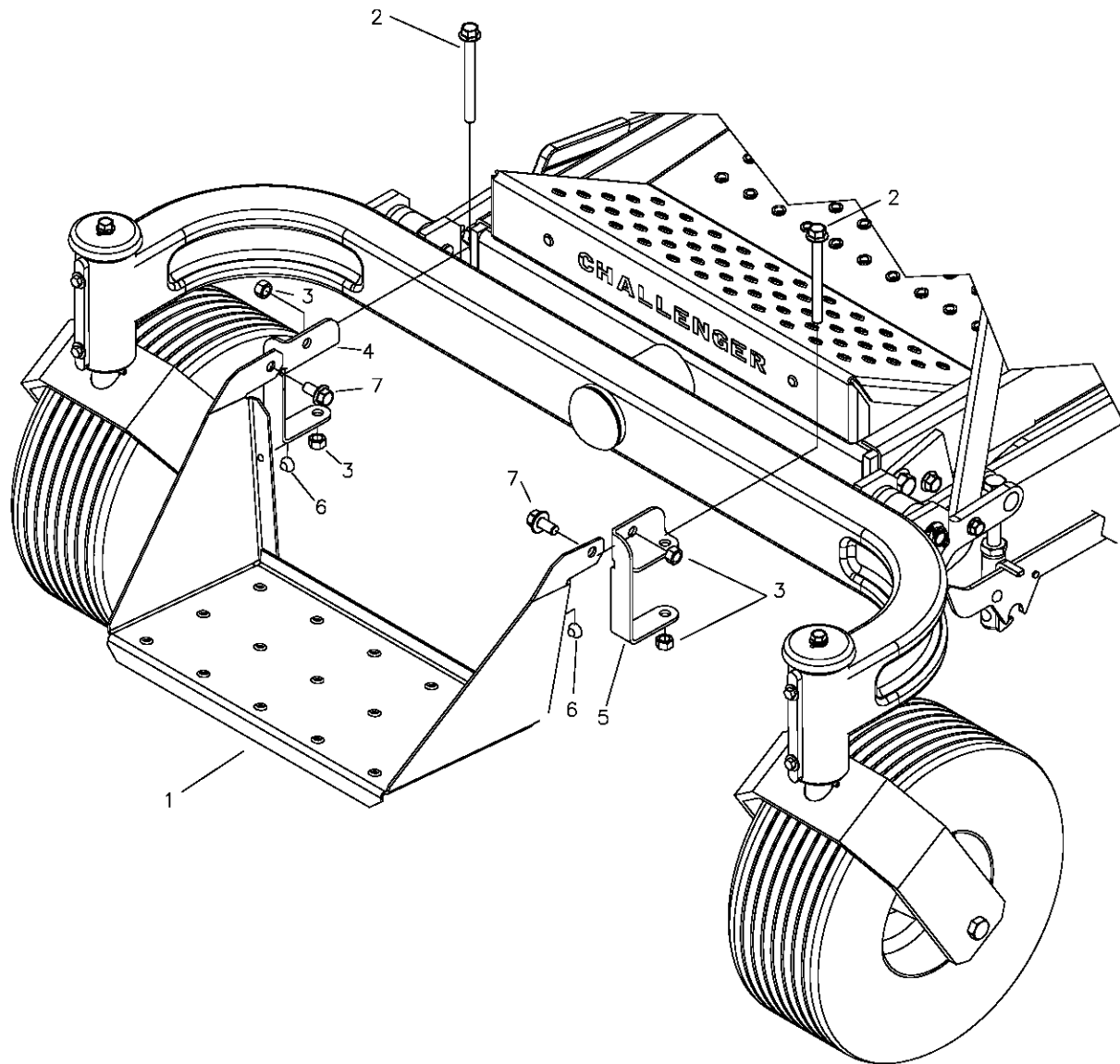


* NOT REQ'D ON MOWERS
WITH BRIGGS ENGINES

UNDERSIDE OF SEAT MOUNTING BASE "#1" - LATCH PARTS

REF NO.	PART NO.	QTY.	DESCRIPTION	REF NO.	PART NO.	QTY.	DESCRIPTION
1	707-005P	1	PLATE, SEAT	8	F-1009-02	3	5/16 FLAT WASHER
2	707-045P	2	BAR, REINFORCEMENT, SEAT	9	F-1521	4	1/2" WASHER, SPECIAL
3	707-080P	1	LATCH SEAT	10	F-1125	16	5/16-18 NUT, STOVER
4	F-2120	5	FHCS, 5/16-18x3/4" GR5	11	F-1005-03	2	3/8" FLAT WASHER
5	F-1015-15	1	5/16-18 x 1" CAPSCREW	12	H-1635	2	3/4 x 4" EXTENSION SPRING
6	F-1015-27	4	5/16-18 x 1-1/2", CAPSCREW	13	H-2460	1	CABLE, SEAT
7	F-1394	2	3/8-16 x 1" CAPSCREW				

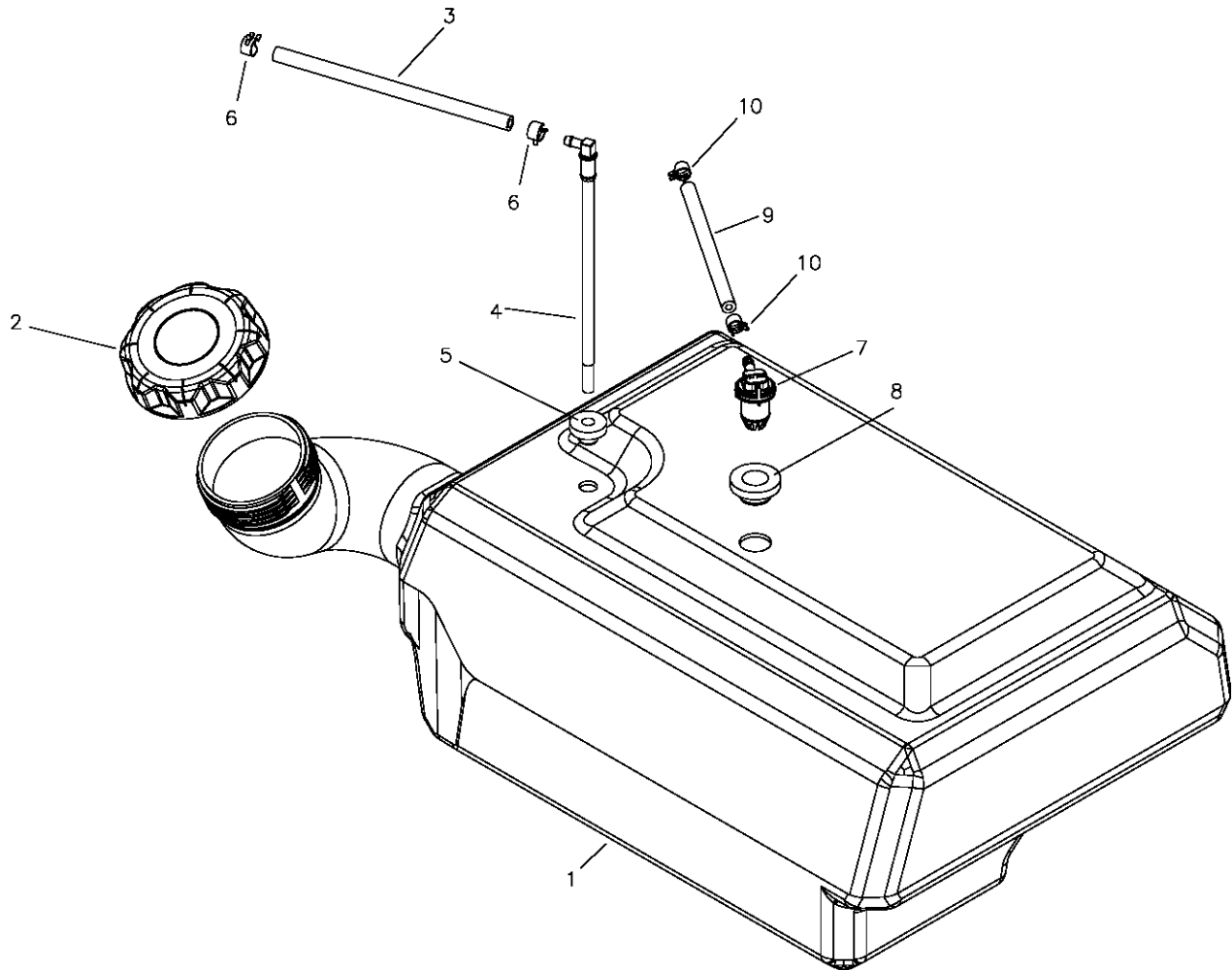
FRONT STEP ASSEMBLY



REF NO.	PART NO.	QTY.	DESCRIPTION
1	663-134P	1	FRONT STEP
2	F-2142	2	FHCS, 3/8-16 X 4" GR.5
3	F-1005-03	4	3/8-16 LOCK NUT
4	659-241P	1	BRACKET, STEP MOUNT, RH
5	659-242P	1	BRACKET, STEP MOUNT, LH
6	H-2461	2	RUBBER BUMPER BUTTON
7	F-2124	2	FHCS, 3/8-16 X 3/4" GR.5

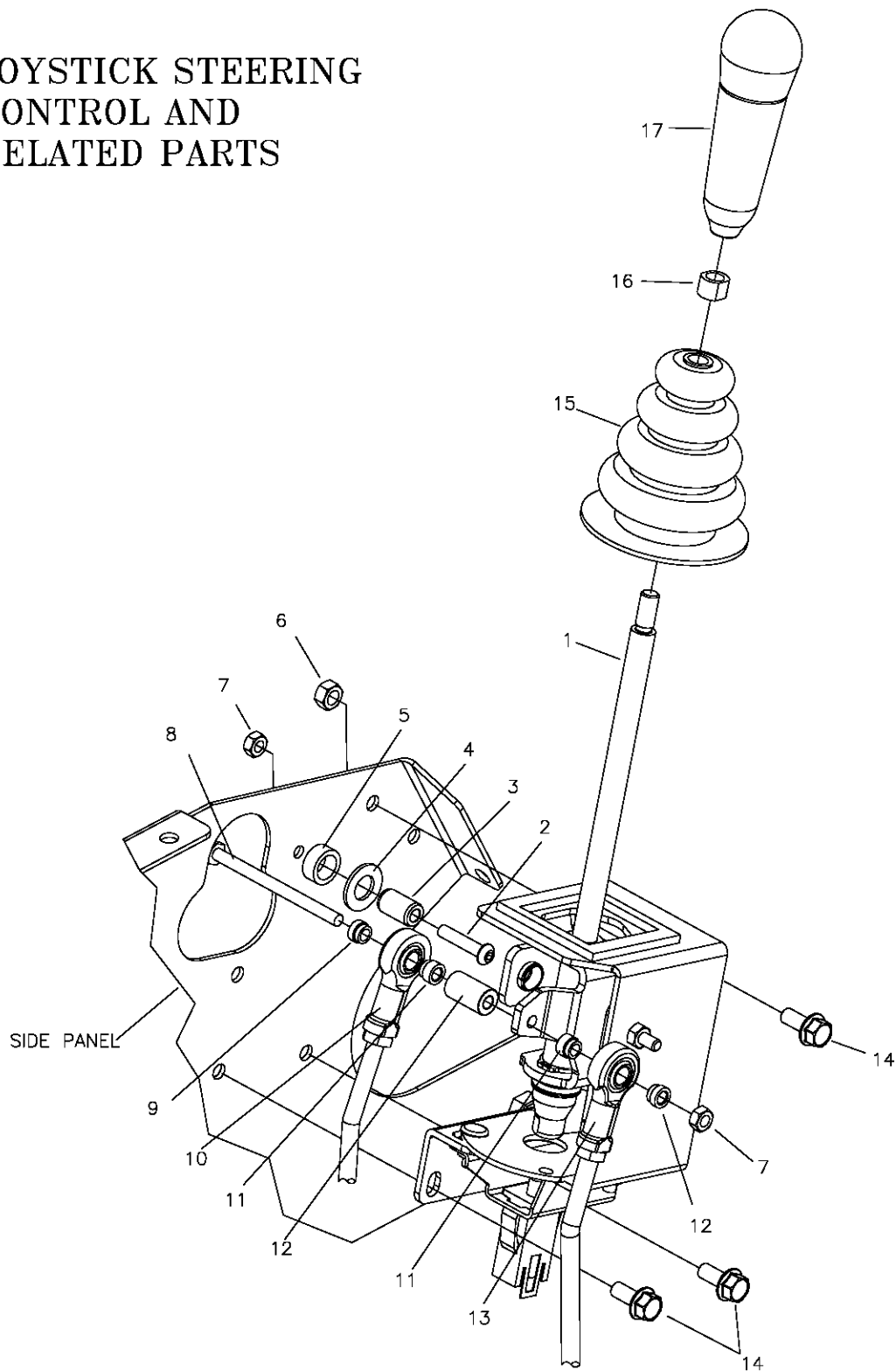
FUEL TANK ASSEMBLY H-2725

(INCLUDES ALL PARTS EXCEPT #2)



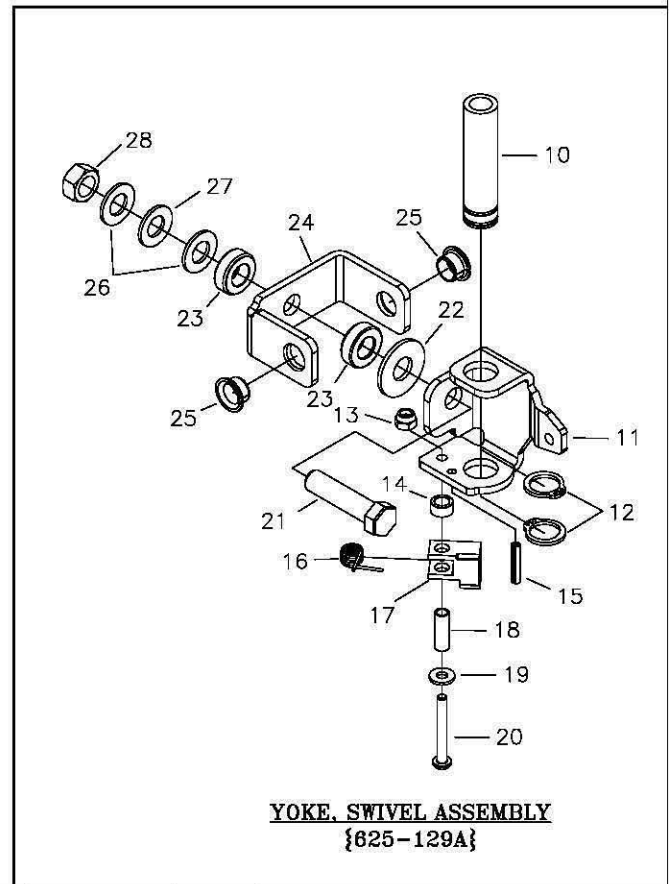
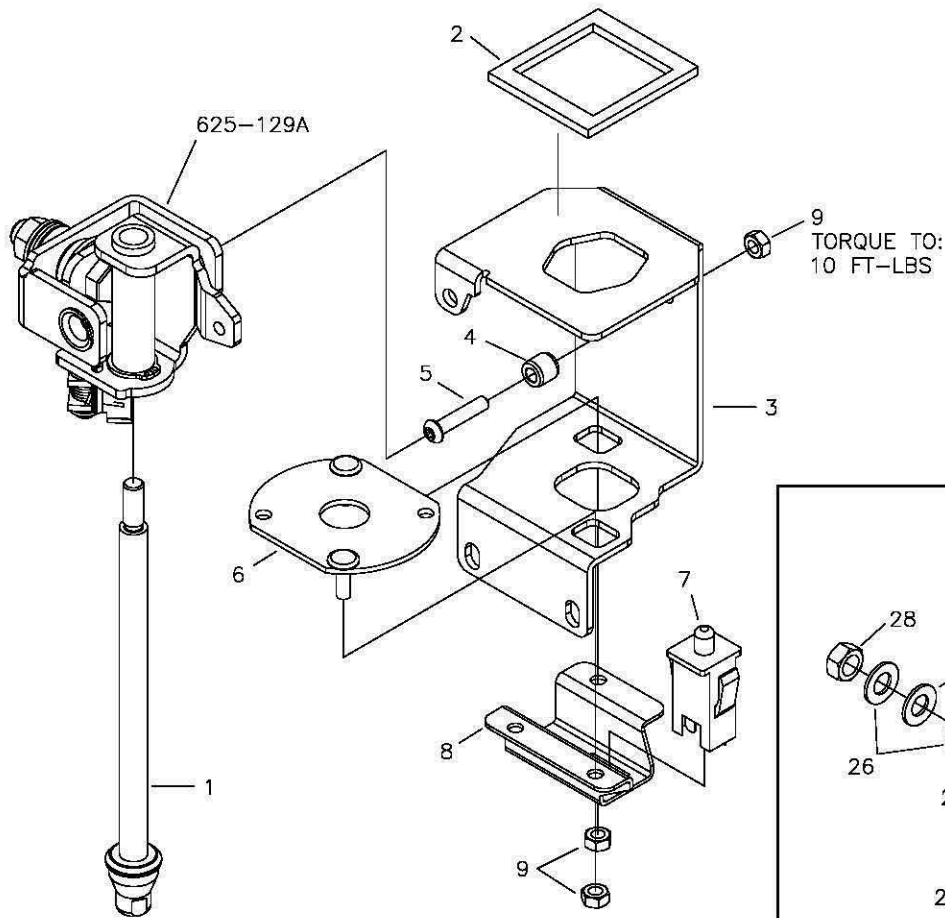
REF NO.	PART NO.	QTY.	DESCRIPTION
1	-----	-	8 GALLON TANK, VENTED
2	H-2743	1	GAS CAP, RATCHET
3	H-1648	4.0ft	FUEL LINE
4	H-2742	1	PICK UP TUBE
5	H-2741	1	GROMMET, PICK UP TUBE
6	H-1687	2	HOSE CLAMP, 1/2"
7	H-2678	1	REMOTE VENT
8	H-2679	1	REMOTE VENT GROMMET
9	H-2697	4.0ft	VENT LINE
10	H-2698	2	VENT LINE CLAMP

JOYSTICK STEERING CONTROL AND RELATED PARTS



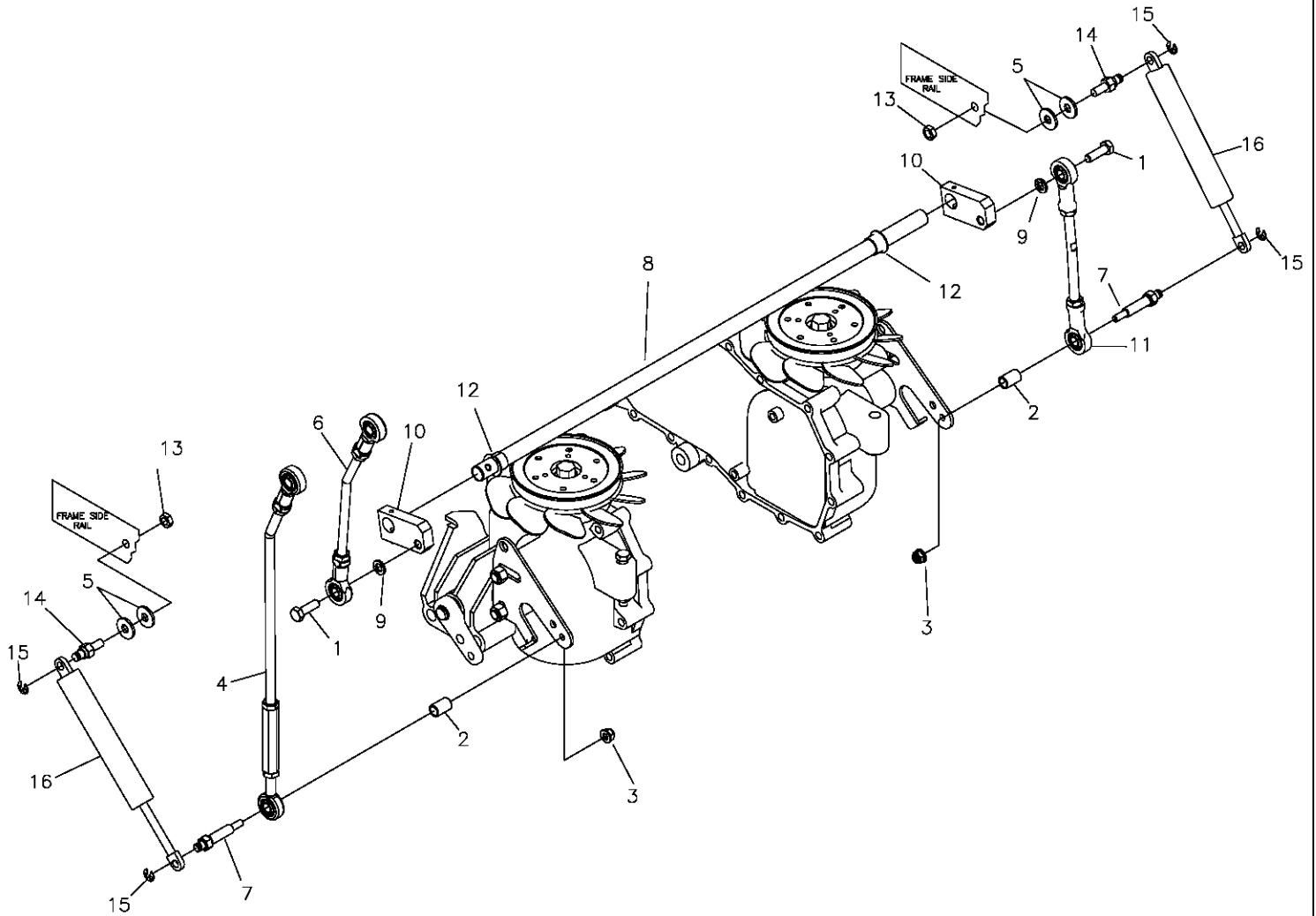
REF NO.	PART NO.	QTY.	DESCRIPTION	REF NO.	PART NO.	QTY.	DESCRIPTION
1	625-121A	1	JOYSTICK ASSEMBLY	10	707-082P	1	LINKAGE, INNER, JOYSTICK
2	F-2103	1	BUTTON SHCS, 1/4-20x1"	11	625-107P	1	BUSHING, .375 ROD END
3	625-119P	1	PIN, PIVOT, JS, LONG	12	625-100P	1	TUBE, PIVOT, JOYSTICK
4	F-1521	1	1/2" WASHER	13	707-083P	1	OUTER, LINKAGE, JOYSTICK
5	625-126P	1	SPACER, JOYSTICK PANEL	14	F-2120	3	FHCS, 5/16-18 x 3/4" GR5
6	F-1125	3	5/16-18 STOVER NUT	15	H-1991	1	BOOT
7	F-1005-01	1	1/4-20 LOCK NUT	16	H-2765	1	NUT, JOYSTICK
8	F-1020-01	1	1/4-20 x 3-1/2" CAPSCREW	17	H-2764	1	HANDLE, JOYSTICK
9	625-116P	1	BUSHING, .375 ROD END, SHORT				

JOYSTICK ASSEMBLY 625-121A



ITEM	PART #	QTY.	DESCRIPTION	ITEM	PART #	QTY.	DESCRIPTION
1	625-130A	1	ROD ASSEMBLY, SHORT	15	F-1503	1	3/16 x 1" SPIRAL PIN
2	H-1947	1	GASKET, FOAM, JOYSTICK	16	H-2710	1	SPRING, DETENT, JOYSTICK
3	625-095P	1	HOUSING, JOYSTICK	17	625-103P	1	TAB, CAM DETENT
4	625-106P	1	PIN, PIVOT, JOYSTICK	18	625-124P	1	TUBE-SPACER, DETENT CAM
5	F-2103	1	BUTTON SHCS, 1/4-20 x 1", CZ	19	F-2136	1	WASHER, FLAT, #12 PLAIN
6	625-127W	1	NEUTRAL PLATE, WLDT	20	F-2135	1	SCR, PANHD, PHLPS, #12-24x1-3/4"
7	E-6474	1	SWITCH, SNAP MOUNT	21	F-1293	1	1/2-13 x 2" CAPSCREW
8	659-285P	1	MOUNT, SWITCH	22	F-1009-05	1	1/2" FLAT WASHER
9	F-1005-01	3	1/4-20 LOCK NUT	23	D-3857	2	THRUST BEARING
10	625-099P	1	TUBE, GUIDE, CONTROL ROD	24	625-097P	1	PIVOT, JOYSTICK (PART OF 625-128A)
11	625-096P	1	YOKE, SWIVEL, JOYSTICK	25	D-3784	2	BUSHING, FLANGED (PART OF 625-128A)
12	H-2705	2	RING, DETENT, .75 EXT.	26	F-1521	2	1/2" WASHER, CUSTOM
13	F-2137	1	NUT, #12-24, NYLOCK	27	H-2704	1	SPRING, BELLEVILLE, .50x1x.073
14	625-125P	1	SPACER, CAM DETENT	28	F-1005-05	1	1/2-13 STOVER NUT

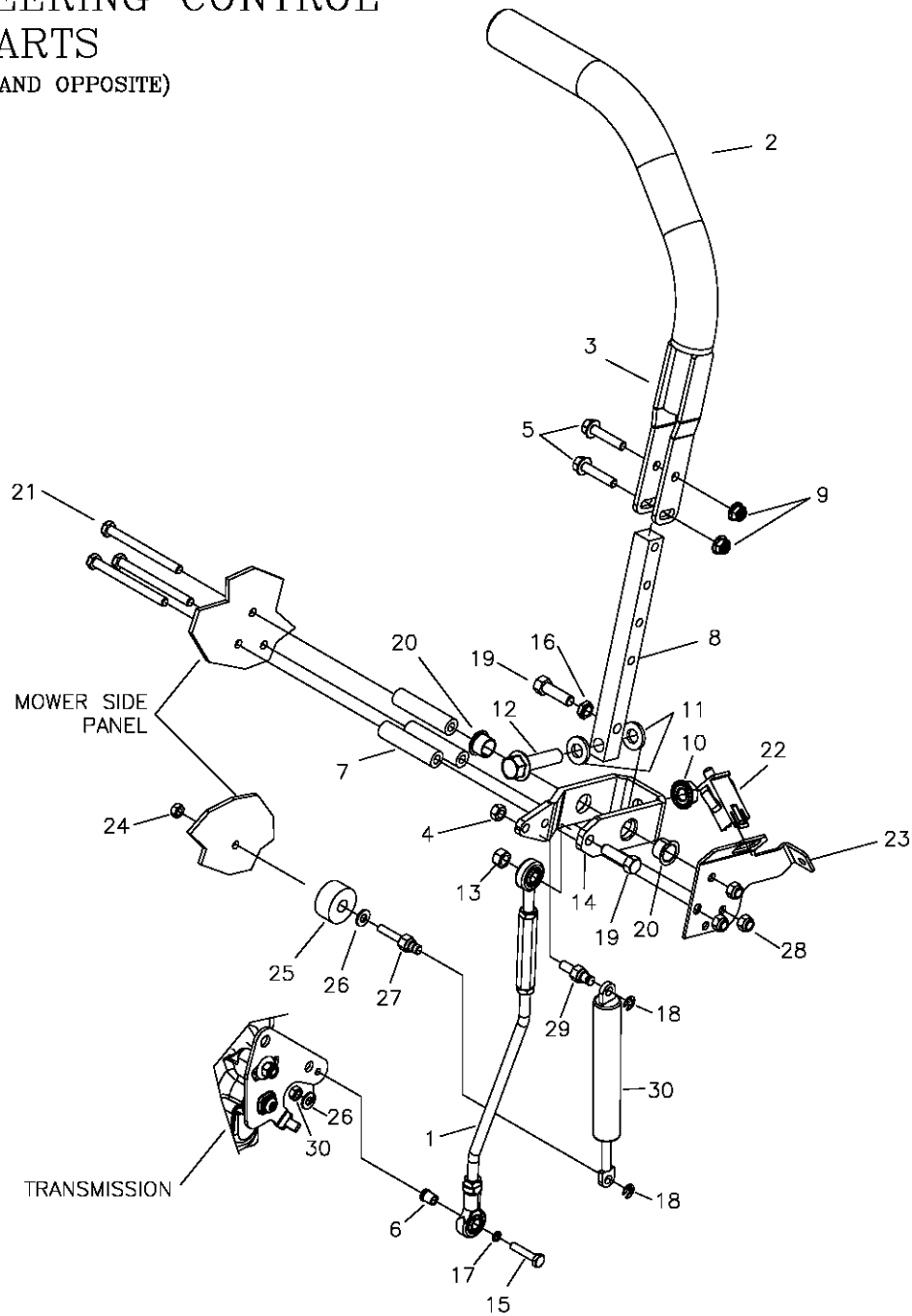
JOYSTICK STEERING CONTROL & RELATED PARTS



ITEM #	PART #	QTY	DESCRIPTION
1	F-1394	2	3/8-16 x 1" CAPSCREW
2	707-073P	2	STAND-OFF, LINKAGE MOUNT
3	F-2132	2	NUT, 1/4-20 NYLOC, FLANGED
4	707-083P	1	OUTER LINKAGE, JS
5	F-1009-02	4	5/16" FLAT WASHER
6	707-082P	1	INNER LINKAGE, JS
7	707-072P	2	STUD, LINKAGE MOUNT
8	700-055P	1	ROD, SHIFT CROSS
9	F-1019-03	2	3/8" LOCKWASHER
10	625-122A	2	SWIVEL ARM
11	H-2757	1	LINKAGE, JS
12	D-3730	2	BUSHING
13	F-1125	2	5/16-16 STOVER NUT
14	638-028P	2	DAMPER BOLT, 5/16-18 x 3/4
15	F-1610	4	E-RING FOR 1/4" SHAFT
16	H-2467	2	DUAL ACTION DAMPER

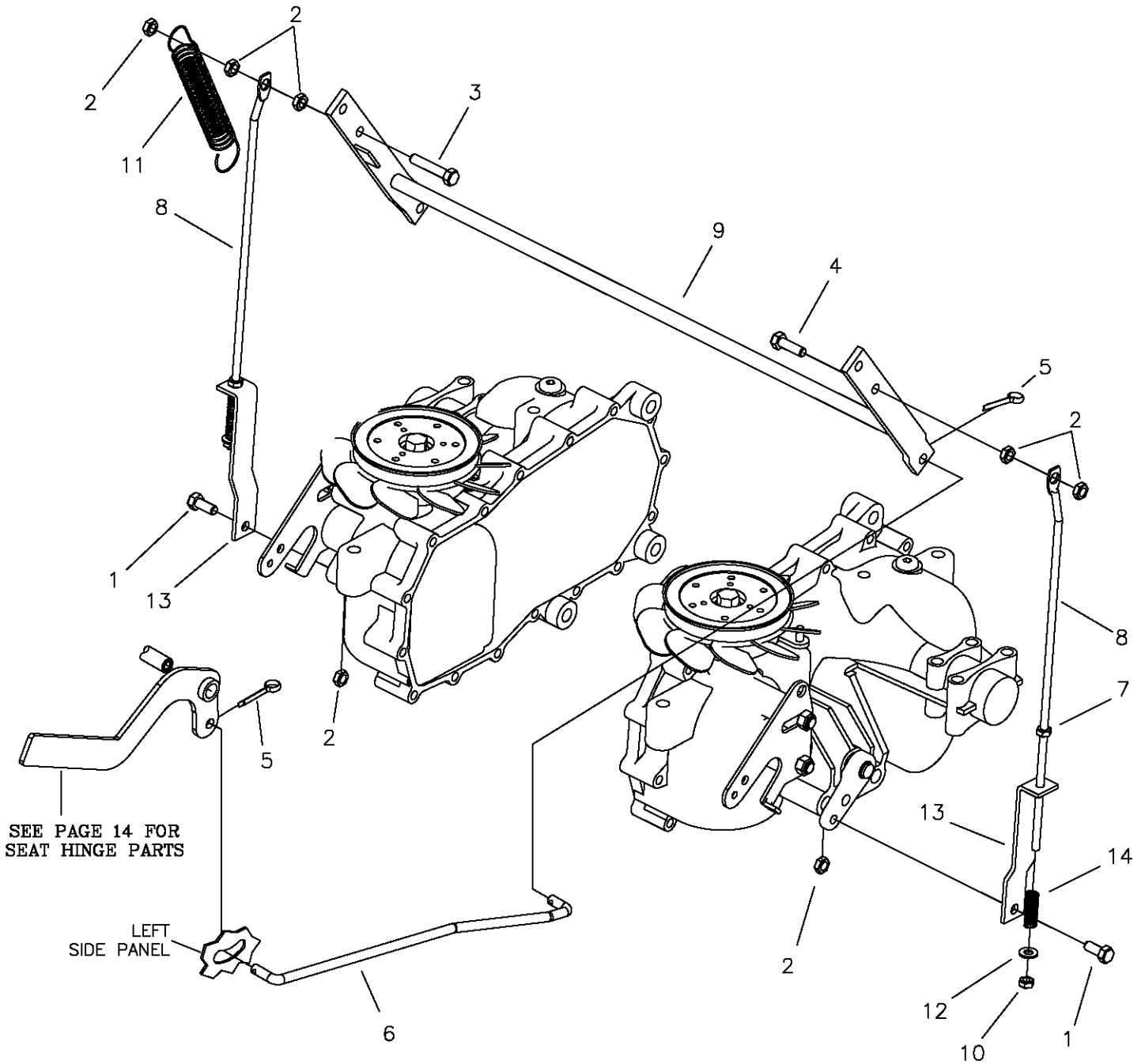
TWINSTICK STEERING CONTROL & RELATED PARTS

(RIGHTHAND SHOWN, LEFTHAND OPPOSITE)



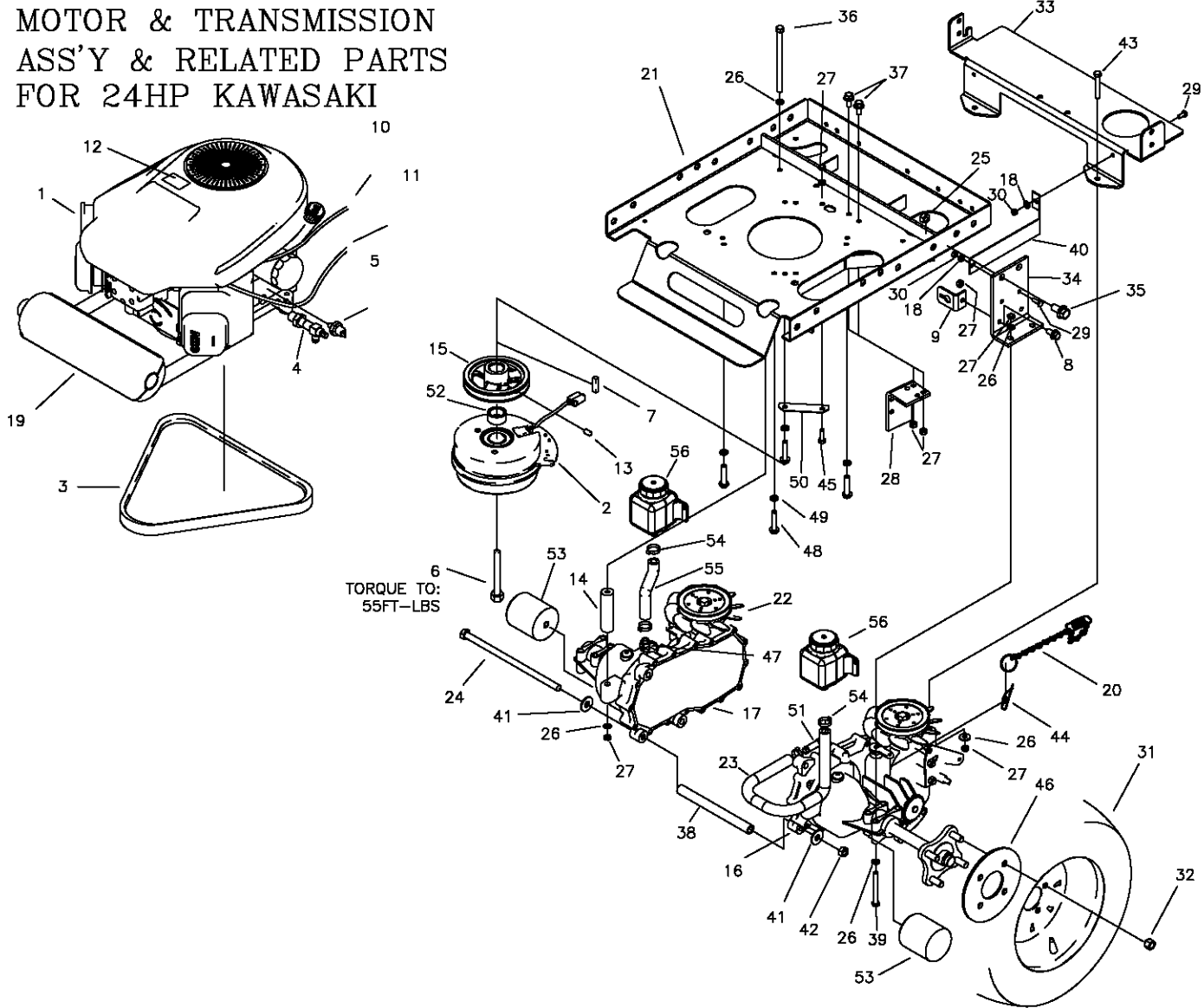
REF NO.	PART NO.	QTY.	DESCRIPTION	REF NO.	PART NO.	QTY.	DESCRIPTION
1	663-050P	1	LINK ROD ASSEMBLY	17	F-1019-01	4	1/4" LOCK WASHER
2	H-2739	1	GRIP, 15", CLOSED END	18	F-1610	2	E-RING FOR 1/4" SHAFT
3	659-364W	1	DUAL LEVER CONTROL	19	F-1307	2	3/8-16 X 1 1/4" CAPSCREW
4	F-1125	1	5/16 LOCK NUT	20	D-3730	2	FLANGED BUSHING 5/8" BORE
5	F-2129	2	FHCS, 5/16-18 X 1 1/2" w/PATCH	21	F-2058	3	5/16-18 x 3 1/2" CAPSCREW
6	H-2465	1	ADAPTER, ROD END, LONG	22	E-6474	1	SWITCH, SNAP MOUNT
7	659-252P	3	TUBE SPACER	23	647-242P	1	MOUNTING BRACKET (RH)
8	659-365P	1	LOWER SHIFT BLOCK	--	647-243P	1	MOUNTING BRACKET (LH)
9	F-2063	1	5/16-18 NYLOC NUT	24	F-1158	1	1/4-20 STOVER NUT
10	F-2060	2	1/2-13 NUT, FLANGE LOCK	25	F-2045	1	SPACER
11	606-151P	2	WASHER, NYLON 1/2 ID x 1/8"	26	F-1009-01	2	1/4" FLAT WASHER
12	F-2128	1	FHCS, 1/2-13 x 2" GR5	27	638-029P	1	DAMPER BOLT, 1/4-20
13	F-1005-03	1	3/8-16 STOVER NUT	28	F-1005-02	3	1/4-20 NYLOC NUT
14	659-243P	1	SHIFTING YOKE	29	638-028P	1	DAMPER BOLT, 5/16-18 X 3/4"
15	F-1539	1	1-4-20 x 1-1/4" CAPSCREW	30	H-2843	1	DUAL ACTION DAMPNER, 750N
16	F-1486	2	3/8-16 JAM NUT				

PARKING BRAKE ASSEMBLY & RELATED PARTS



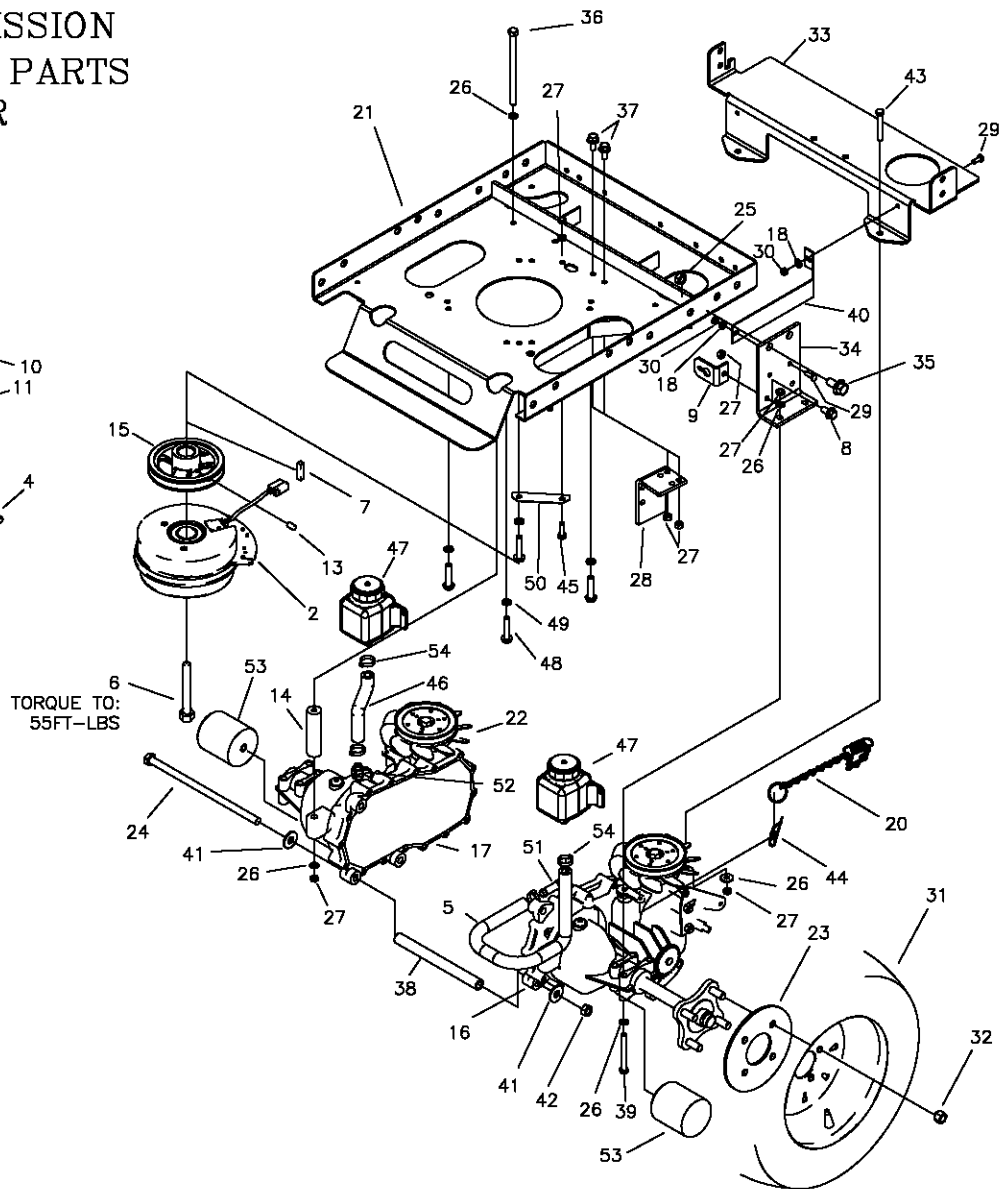
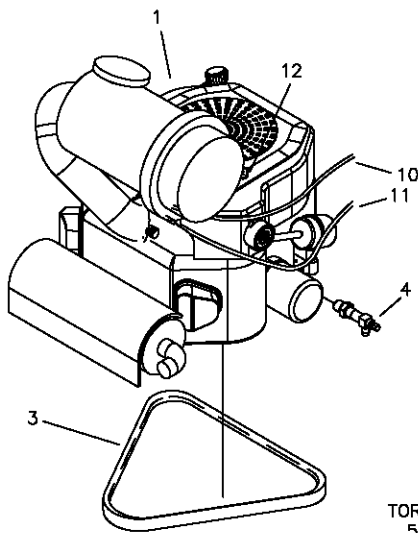
ITEM #	PART #	QTY	DESCRIPTION
1	F-1546	4	5/16-18 X 3/4" H.H.C.S.
2	F-1125	6	5/16" STOVER LOCK NUT
3	F-1015-17	1	5/16-18 X 1-1/2" H.H.C.S.
4	F-1015-15	1	5/16-18 X 1" H.H.C.S
5	F-1491	2	1" COTTER PIN
6	707-044P	1	LINK, PARK BRAKE
7	F-1158	2	1/4" STOVER LOCK NUT
8	H-2452	2	BRAKE LINK BAR, BENT
9	659-206W	1	BRAKE ROD WELDMENT
10	F-1748	2	1/4" NYLOC LOCK NUT
11	H-1635	1	EXTENSION SPRING 3/4 X 4"
12	F-1009-01	2	1/4" FLAT WASHER
13	659-159P	2	LOWER BRAKE LINK
14	H-1637	2	COMPRESSION SPRING

MOTOR & TRANSMISSION ASS'Y & RELATED PARTS FOR 24HP KAWASAKI



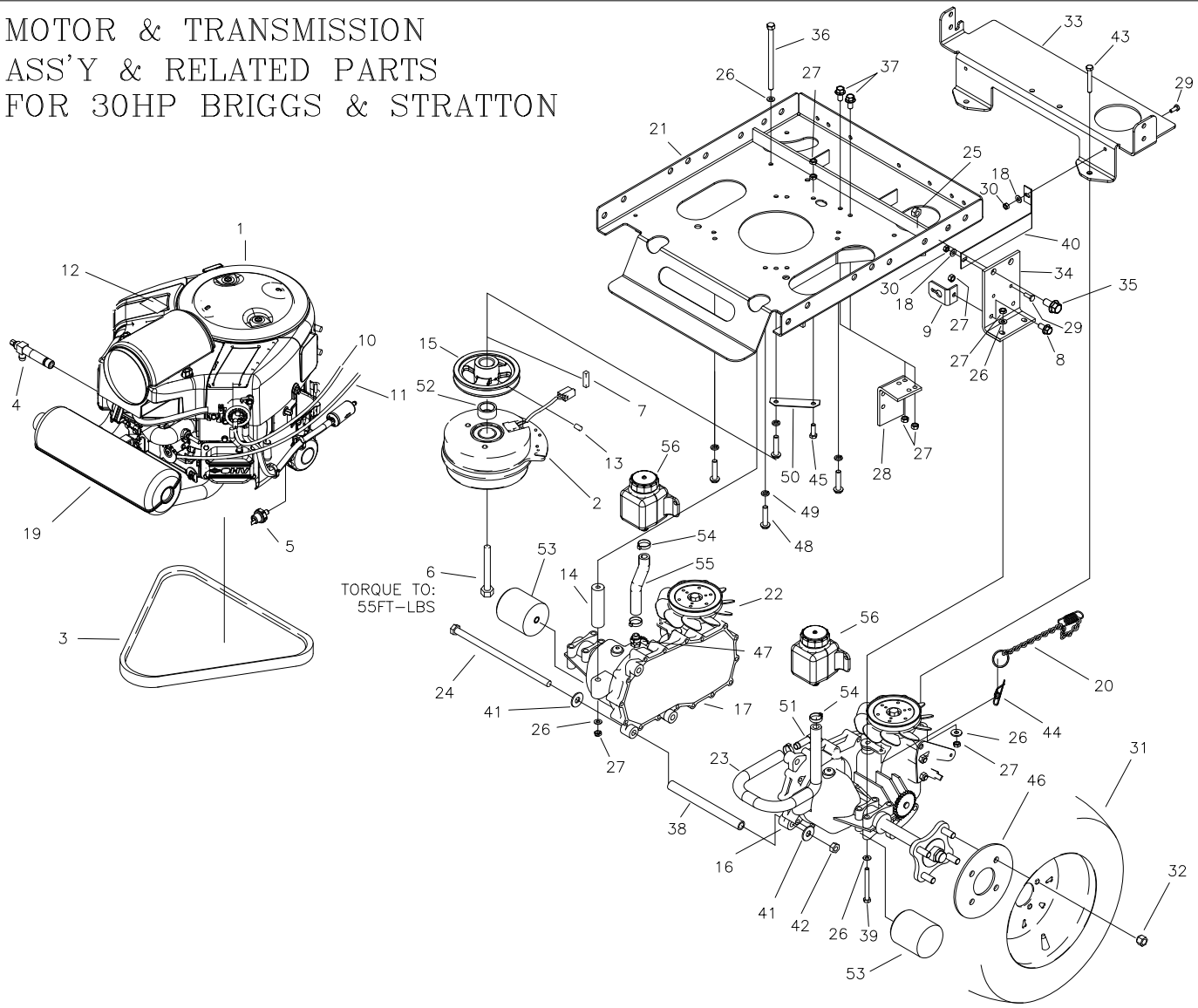
ITEM #	PART #	QTY	DESCRIPTION	ITEM #	PART #	QTY	DESCRIPTION
1	M-5395	1	ENGINE, KAW 24HP, FS730V TWIN	29	F-1015-02	4	1/4-20 X 5/8" GR. 5
2	E-6532	1	CLUTCH-BRAKE, CMS 200ft/lb	30	F-1158	4	1/4-20 LOCK NUTS
3	D-3905	1	V-BELT, KEVLAR CORD, A-69	31	D-3881	2	TIRE, 22x11-10, TURF
4	H-2590	1	OIL DRAIN VALVE	32	F-1499	8	LUG NUT, 1/2 X 20
5	E-6307	1	OIL PRESSURE SWITCH	33	707-036P	1	BRACE, TRANSMISSION
6	F-2113	1	7/16-20x2-1/2" CAPSCREW, GR8	34	659-350P	2	HYDRO MOUNT BRACE
7	621-113P	1	KEY, 1/4 SQ. X 1-1/4"	35	F-2127	4	FHCS, 1/2-13 X 1-1/4" GR5
8	F-2124	2	FHCS, 5/16-18 X 3/4" BOLT GR5	36	F-2145	2	5/16-18 X 6" BOLT GR8
9	659-119P	1	FREE WHEEL ANCHOR	37	F-2120	1	FHCS, 1/2-13 X 1-1/4" GR5
10	H-2287	1	CHOKE CABLE	38	659-173P	1	HYDRO BRACE
11	H-2610	1	THROTTLE CABLE	39	F-1544	4	5/16-18 X 3" BOLT
12	P-10077-11	1	DECAL, "CLEAN"	40	707-061P	2	FAN SHROUD
13	F-1228	1	SETSCREW, 1/4" X 1/4"	41	F-1009-03	2	3/8" FLAT WASHER
14	659-121P	2	REAR HYDRO BRACE	42	F-1005-03	1	3/8-16 LOCK NUT
15	707-085P	1	MOTOR PULLEY	43	F-1820	2	5/16-18 x 2-1/4" CAPSCREW
16	D-3882-01	1	TRANSAXLE, RH, ZT-3400	44	F-1492	2	5/16-3/8 RUE RING
17	D-3882-02	1	TRANSAXLE, LH, ZT-3400	45	F-1015-15	1	5/16-18 x 1" CAPSCREW
18	F-1009-01	4	1/4" FLAT WASHER	46	659-092P	2	WHEEL BACKING PLATE
19	H-2759	1	MUFFLER, KAWASAKI	47	H-2517	1	VENT TUBE ADAPTER
20	707-074P	2	FREEWHEEL CHAIN W/SPRING	48	F-1307	4	3/8-16 x 1-1/4" CAPSCREW
21	707-009W	1	MOTOR MOUNT	49	F-1019-03	4	3/8" LOCK WASHER
22	H-2539	2	FAN BLADE REPLACEMENT	50	647-085P	1	GROUND STRAP
23	H-2761	1	HOSE, 1/2" x 19"	51	H-2762	1	VENT TUBE ADAPTER
24	F-2007	1	3/8-16 X 12-1/2" HEX BOLT	52	F-2043	1	SPACER
25	F-1005-05	4	1/2-13 STOVER NUT	53	H-2567	2	TRANSAXLE OIL FILTER
26	F-1009-02	14	5/16" FLAT WASHER	54	H-2535	4	HOSE CLAMP
27	F-1125	10	5/16-18 LOCK NUT	55	H-2549	1	HOSE 5" LONG
28	707-033P	1	CLUTCH STOP	56	D-3791	2	SMALL HYDRO TANK

MOTOR & TRANSMISSION ASS'Y & RELATED PARTS FOR 27HP KOHLER



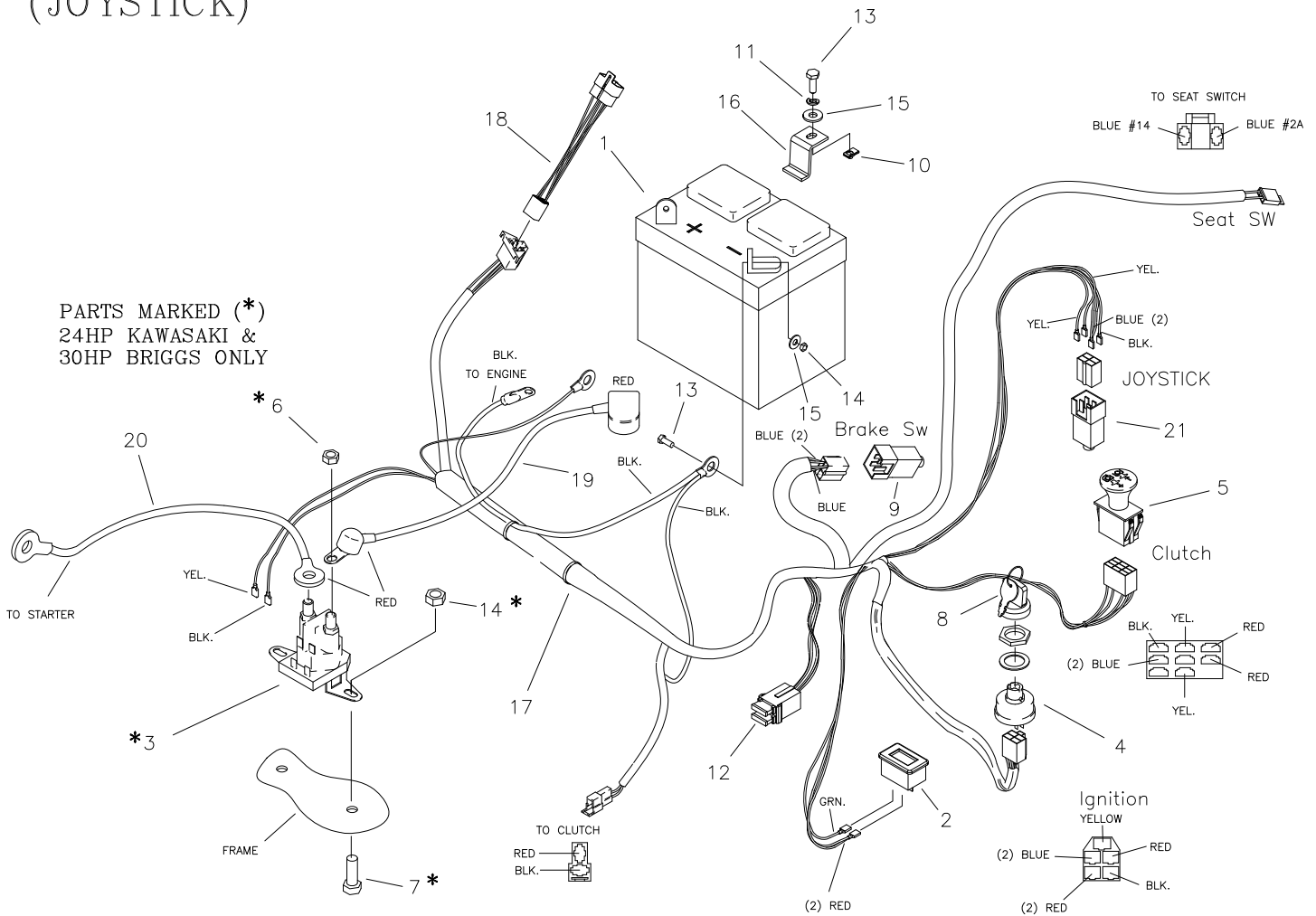
ITEM #	PART #	QTY	DESCRIPTION	ITEM #	PART #	QTY	DESCRIPTION
1	M-5335	1	ENGINE, 27HP, KOHLER COMMAND	28	707-033P	1	CLUTCH STOP
2	E-6532	1	CLUTCH-BRAKE, CMS 200ft/lb	29	F-1015-02	4	1/4-20 X 5/8" GR. 5
3	D-3905	1	V-BELT, KEVLAR CORD, A-69	30	F-1158	4	1/4-20 LOCK NUTS
4	H-2589	1	OIL DRAIN VALVE	31	D-3881	2	TIRE, 22x11-10, TURF
5	H-2761	1	HOSE, 1/2" x 19"	32	F-1499	8	LUG NUT, 1/2 X 20
6	F-2113	1	7/16-20x2-1/2" CAPSCREW, GR8	33	707-036P	1	BRACE, TRANSMISSION
7	621-113P	1	KEY, 1/4 SQ. X 1-1/4"	34	659-350P	2	HYDRO MOUNT BRACE
8	F-2124	2	FHCS, 5/16-18 X 3/4" BOLT GR5	35	F-2127	4	FHCS, 1/2-13 X 1-1/4" GR5
9	659-119P	1	FREE WHEEL ANCHOR	36	F-2145	2	5/16-18 X 6" BOLT GR8
10	H-2404	1	CHOKE CABLE	37	F-2120	1	FHCS, 1/2-13 X 1-1/4" GR5
11	H-2610	1	THROTTLE CABLE	38	659-173P	1	HYDRO BRACE
12	P-10077-11	1	DECAL, "CLEAN"	39	F-1544	4	5/16-18 X 3" BOLT
13	F-1228	1	SETSCREW, 1/4" X 1/4"	40	707-061P	2	FAN SHROUD
14	659-121P	2	REAR HYDRO BRACE	41	F-1009-03	2	3/8" FLAT WASHER
15	707-085P	1	MOTOR PULLEY	42	F-1005-03	1	3/8-16 LOCK NUT
16	D-3882-01	1	TRANSAXLE, RH, ZT-3400	43	F-1820	2	5/16-18 x 2-1/4" CAPSCREW
17	D-3882-02	1	TRANSAXLE, LH, ZT-3400	44	F-1492	2	5/16-3/8 RUE RING
18	F-1009-01	4	1/4" FLAT WASHER	45	F-1015-15	1	5/16-18 x 1" CAPSCREW
19	H-2759	1	MUFFLER, KAWASAKI	46	H-2549	1	HOSE 5" LONG
20	707-074P	2	FREEWHEEL CHAIN W/SPRING	47	D-3791	2	SMALL HYDRO TANK
21	707-009W	1	MOTOR MOUNT	48	F-1307	4	3/8-16 x 1-1/4" CAPSCREW
22	H-2539	2	FAN BLADE REPLACEMENT	49	F-1019-03	4	3/8" LOCK WASHER
23	659-092P	2	WHEEL BACKING PLATE	50	647-085P	1	GROUND STRAP
24	F-2007	1	3/8-16 X 12-1/2" HEX BOLT	51	H-2762	1	VENT TUBE ADAPTER
25	F-1005-05	4	1/2-13 STOVER NUT	52	H-2517	1	VENT TUBE ADAPTER
26	F-1009-02	14	5/16" FLAT WASHER	53	H-2567	2	TRANSAXLE OIL FILTER
27	F-1125	10	5/16-18 LOCK NUT	54	H-2535	4	HOSE CLAMP

MOTOR & TRANSMISSION ASS'Y & RELATED PARTS FOR 30HP BRIGGS & STRATTON



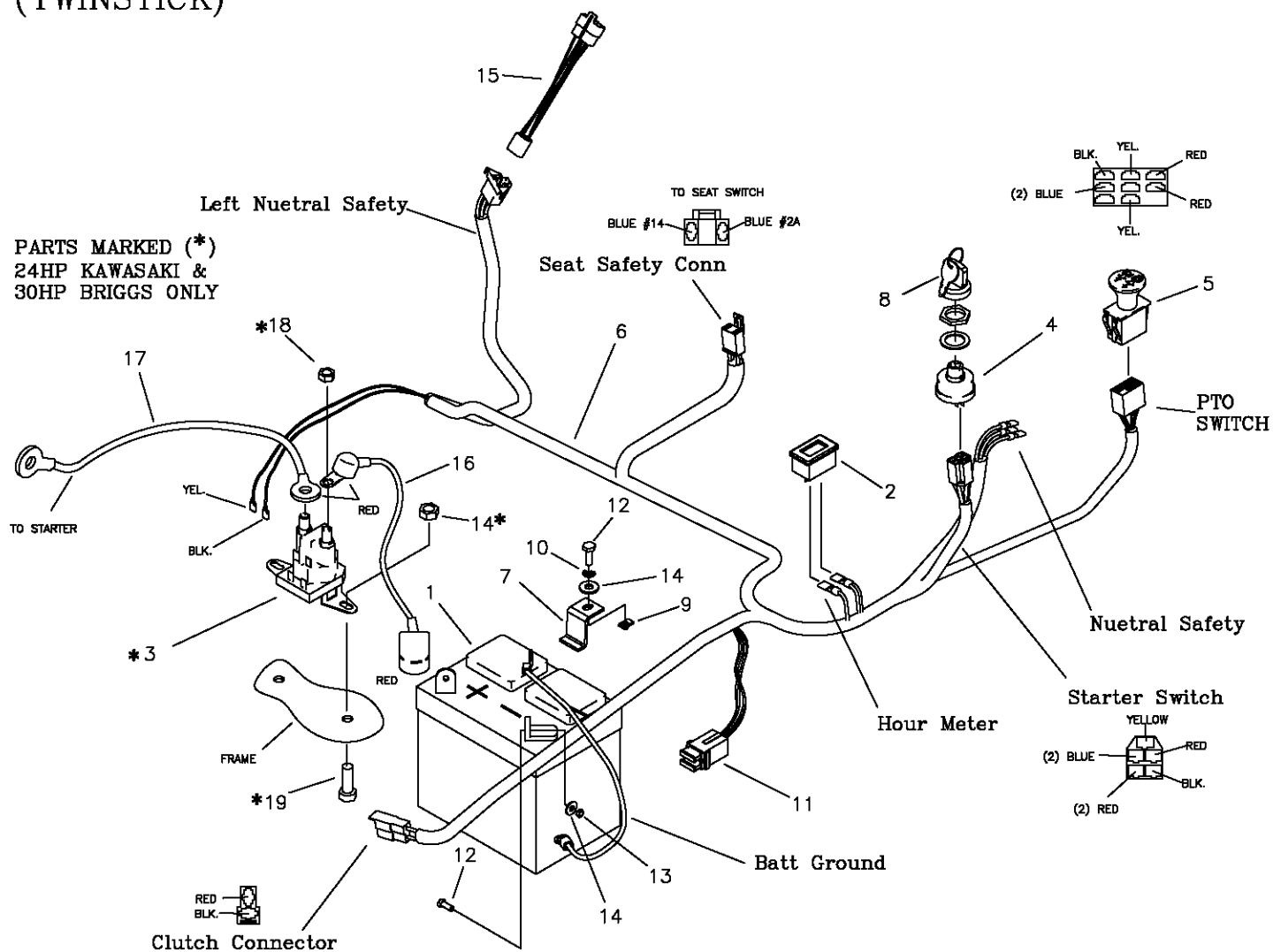
ITEM #	PART #	QTY	DESCRIPTION	ITEM #	PART #	QTY	DESCRIPTION
1	M-5388	1	ENGINE, 30HP, BRIGGS & STRATTON	29	F-1015-02	4	1/4-20 X 5/8" GR. 5
2	E-6532	1	CLUTCH-BRAKE, CMS 200ft/lb	30	F-1158	4	1/4-20 LOCK NUTS
3	D-3905	1	V-BELT, KEVLAR CORD, A-69	31	D-3881	2	TIRE, 22x11-10, TURF
4	H-2589	1	OIL DRAIN VALVE	32	F-1499	8	LUG NUT, 1/2 X 20
5	E-6307	1	OIL PRESSURE SWITCH	33	707-036P	1	BRACE, TRANSMISSION
6	F-2113	1	7/16-20x2-1/2" CAPSCREW, GR8	34	659-350P	2	HYDRO MOUNT BRACE
7	621-113P	1	KEY, 1/4 SQ. X 1-1/4"	35	F-2127	4	FHCS, 1/2-13 X 1-1/4" GR5
8	F-2124	2	FHCS, 5/16-18 X 3/4" BOLT GR5	36	F-2145	2	5/16-18 X 6" BOLT GR8
9	659-119P	1	FREE WHEEL ANCHOR	37	F-2120	1	FHCS, 1/2-13 X 1-1/4" GR5
10	H-2404	1	CHOKE CABLE	38	659-173P	1	HYDRO BRACE
11	H-2612	1	THROTTLE CABLE	39	F-1544	4	5/16-18 X 3" BOLT
12	P-10077-11	1	DECAL, "CLEAN"	40	707-061P	2	FAN SHROUD
13	F-1228	1	SETSCREW, 1/4" X 1/4"	41	F-1009-03	2	3/8" FLAT WASHER
14	659-121P	2	REAR HYDRO BRACE	42	F-1005-03	1	3/8-16 LOCK NUT
15	707-085P	1	MOTOR PULLEY	43	F-1820	2	5/16-18 x 2-1/4" CAPSCREW
16	D-3882-01	1	TRANSAXLE, RH, ZT-3400	44	F-1492	2	5/16-3/8 RUE RING
17	D-3882-02	1	TRANSAXLE, LH, ZT-3400	45	F-1015-15	1	5/16-18 x 1" CAPSCREW
18	F-1009-01	4	1/4" FLAT WASHER	46	659-092P	2	WHEEL BACKING PLATE
19	H-2744	1	MUFFLER, BRIGGS	47	H-2517	1	VENT TUBE ADAPTER
20	707-074P	2	FREEWHEEL CHAIN W/SPRING	48	F-1307	4	3/8-16 x 1-1/4" CAPSCREW
21	707-009W	1	MOTOR MOUNT	49	F-1019-03	4	3/8" LOCK WASHER
22	H-2539	2	FAN BLADE REPLACEMENT	50	647-085P	1	GROUND STRAP
23	H-2761	1	HOSE, 1/2" x 19"	51	H-2762	1	VENT TUBE ADAPTER
24	F-2007	1	3/8-16 X 12-1/2" HEX BOLT	52	F-2043	1	SPACER
25	F-1005-05	4	1/2-13 STOVER NUT	53	H-2567	2	TRANSAXLE OIL FILTER
26	F-1009-02	14	5/16" FLAT WASHER	54	H-2535	4	HOSE CLAMP
27	F-1125	10	5/16-18 LOCK NUT	55	H-2549	1	HOSE 5" LONG
28	707-033P	1	CLUTCH STOP	56	D-3791	2	SMALL HYDRO TANK

E-6415 WIRE HARNESS & RELATED PARTS (JOYSTICK)



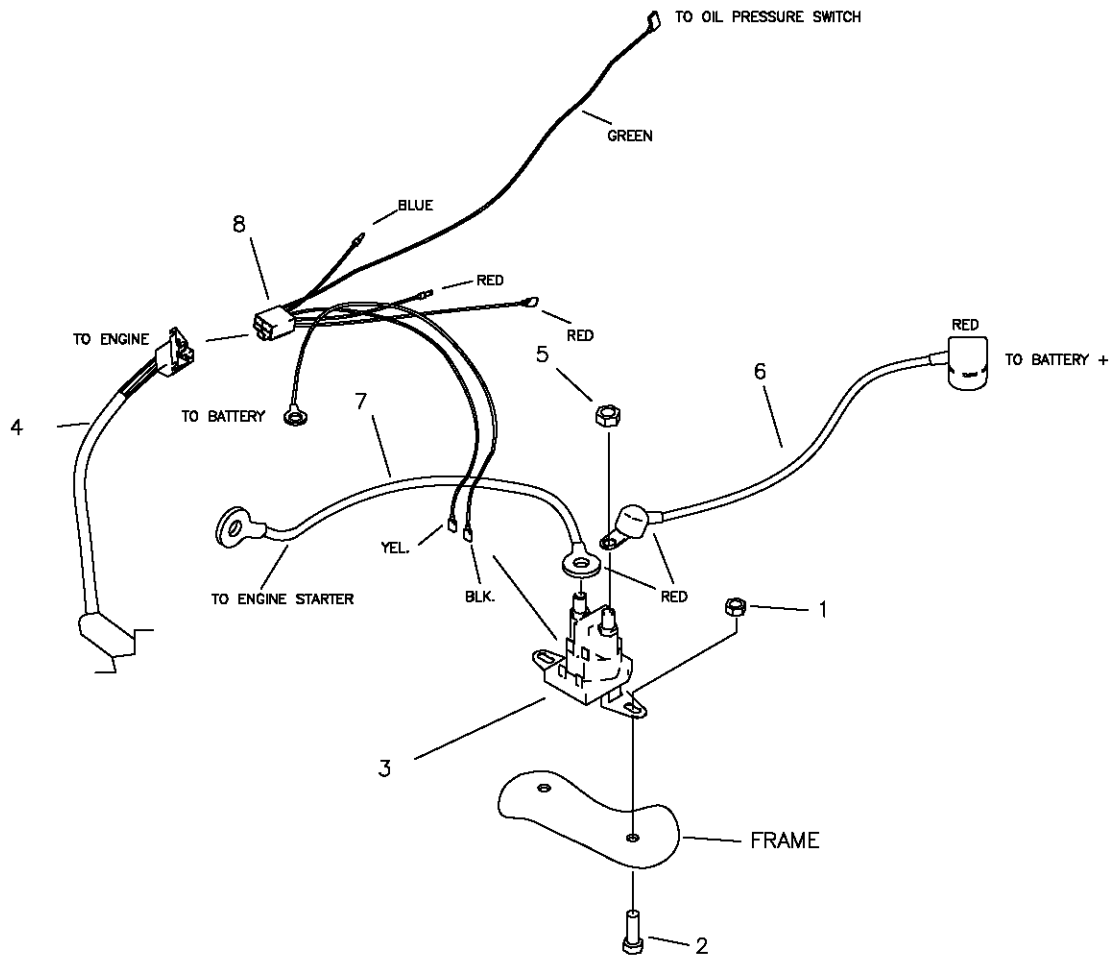
ITEM #	PART #	QTY	DESCRIPTION
1	E-6271	1	BATTERY
2	E-5878	1	HOUR METER
3	E-6054	1	SOLENOID
4	E-5873	1	START SWITCH
5	E-6403	1	CLUTCH SWITCH
6	F-1011-01	2	1/4-20 NUT
7	F-1015-02	2	1/4-20 x 5/8" CAPSCREW
8	E-6445	1	KEY, SET
9	E-6297	1	BRAKE SWITCH
10	F-1858	1	1/4-20 U-NUT
11	F-1019-01	1	1/4" LOCK WASHER
12	E-6207	2	FUSE, #ATC-30
13	F-1538	3	1/4-20 x 3/4" CAPSCREW
14	F-1158	5	1/4-20 STOVER NUT
15	F-1009-01	5	1/4" FLAT WASHER
16	659-137P	1	BATTERY HOLD DOWN
17	E-6415	1	WIRE HARNESS
18	E-6417	1	WIRE HARNESS ADAPTER (KAWASAKI)
-	E-6436	1	WIRE HARNESS ADAPTER (BRIGGS)
19	E-6418	1	CABLE, BATTERY TO SOLENOID
20	E-6419	1	CABLE, SOLENOID TO ENGINE
21	E-6474	1	JOYSTICK SWITCH
-NOT SHOWN-			
	E-6374	1	SEAT SWITCH FOR BRIGGS ENGINE
	E-6580	1	SEAT SWITCH FOR KAW & KOHLER

E-6416 WIRE HARNESS & RELATED PARTS (TWINSTICK)



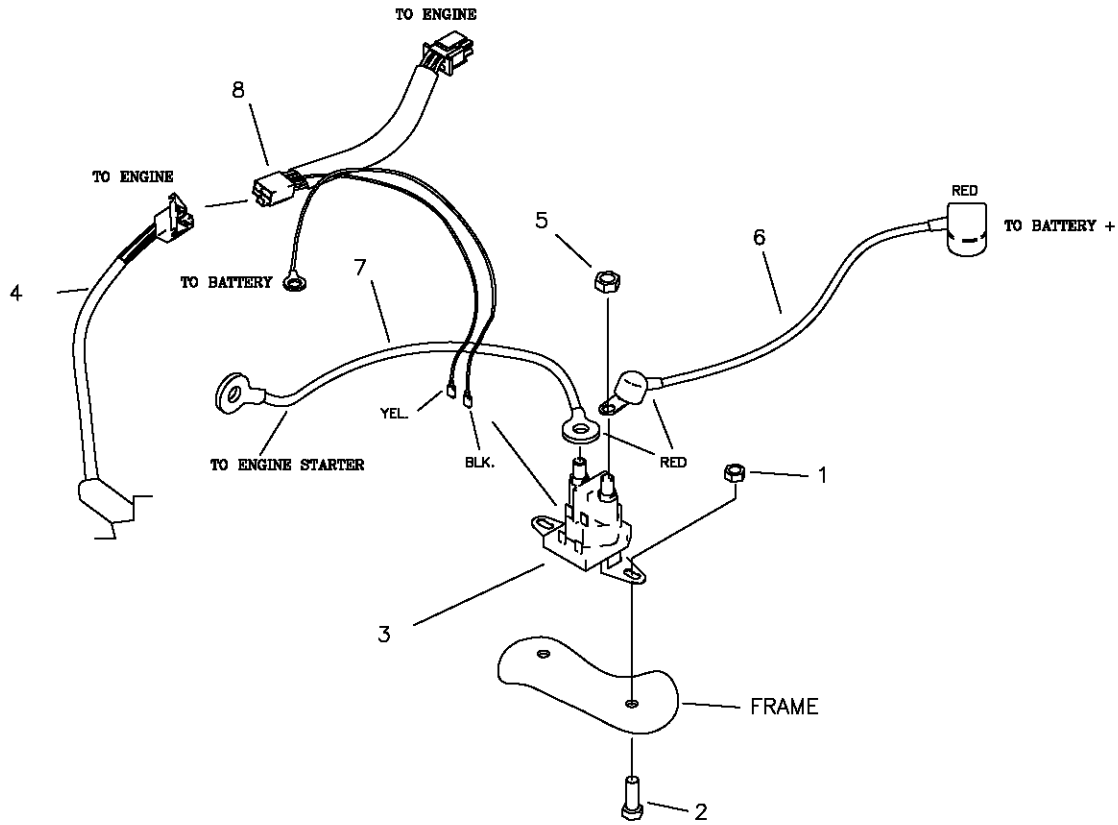
ITEM #	PART #	QTY	DESCRIPTION
1	E-6271	1	BATTERY
2	E-5878	1	HOUR METER
3	E-6054	1	SOLENOID
4	E-5873	1	START SWITCH
5	E-6403	1	CLUTCH SWITCH
6	E-6416	1	WIRE HARNESS
7	659-137P	1	BATTERY HOLD DOWN
8	E-6445	1	KEY, SET
9	F-1858	1	1/4-20 U-NUT
10	F-1019-01	1	1/4" LOCK WASHER
11	E-6207	2	FUSE, #ATC-30
12	F-1538	3	1/4-20 x 3/4" CAPSCREW
13	F-1158	2	1/4-20 STOVER NUT
14	F-1009-01	3	1/4" FLAT WASHER
15	E-6417	1	WIRE HARNESS ADAPTER (KAWASAKI)
-	E-6436	1	WIRE HARNESS ADAPTER (BRIGGS)
16	E-6418	1	CABLE, BATTERY TO SOLENOID
17	E-6419	1	CABLE, SOLENOID TO ENGINE
18	F-1011-01	2	1/4-20 NUT
19	F-1015-02	2	1/4-20 x 5/8" CAPSCREW
-NOT SHOWN-			
	E-6374	1	SEAT SWITCH

WIRE HARNESS ADAPTER & RELATED PARTS FOR 24HP KAWASAKI



ITEM #	PART #	QTY	DESCRIPTION
1	F-1158	2	1/4-20 STOVER NUT
2	F-1015-02	2	1/4-20 x 5/8" CAPSCREW
3	E-6054	1	SOLENOID
4	E-6415	1	WIRE HARNESS (JOYSTICK)
-	E-6416	1	WIRE HARNESS (TWINSTICK)
5	F-1011-01	2	1/4-20 NUT
6	E-6418	1	CABLE, BATTERY TO SOLENOID
7	E-6419	1	CABLE, SOLENOID TO ENGINE
8	E-6417	1	KAWASAKI HARNESS ADAPTER

E-6436 WIRE HARNESS
 ADAPTER & RELATED
 PARTS FOR 30HP BRIGGS



ITEM #	PART #	QTY	DESCRIPTION
1	F-1158	2	1/4-20 STOVER NUT
2	F-1015-02	2	1/4-20 x 5/8" CAPSCREW
3	E-6054	1	SOLENOID
4	E-6416	1	WIRE HARNESS (TWINSTICK)
5	F-1011-01	2	1/4-20 NUT
6	E-6418	1	CABLE, BATTERY TO SOLENOID
7	E-6419	1	CABLE, SOLENOID TO ENGINE
8	E-6436	1	ENGINE ADAPTER

