

REPAIR PARTS MANUAL

COUNTRY
CLIPPER[®]

CHARGER[™]

1035

COUNTRY CLIPPER CHARGER

1035 ZERO TURN RADIUS MOWER

TABLE OF CONTENTS

SECTION 1 – MOWER DECKS AND RELATED PARTS

1. 52" DECK ASSEMBLY
2. 52" TRI-PORT DECK ASSEMBLY
3. 60" DECK ASSEMBLY
4. DECK SPINDLE ASSEMBLY
5. DOUBLE IDLER & RELATED PARTS
6. DOUBLE IDLER & RELATED PARTS - TRI-PORT DECK
7. LIFT HANDLE ASSEMBLY & RELATED PARTS
8. LIFT ASSEMBLY & RELATED PARTS
9. TRANSMISSION IDLERS & RELATED PARTS

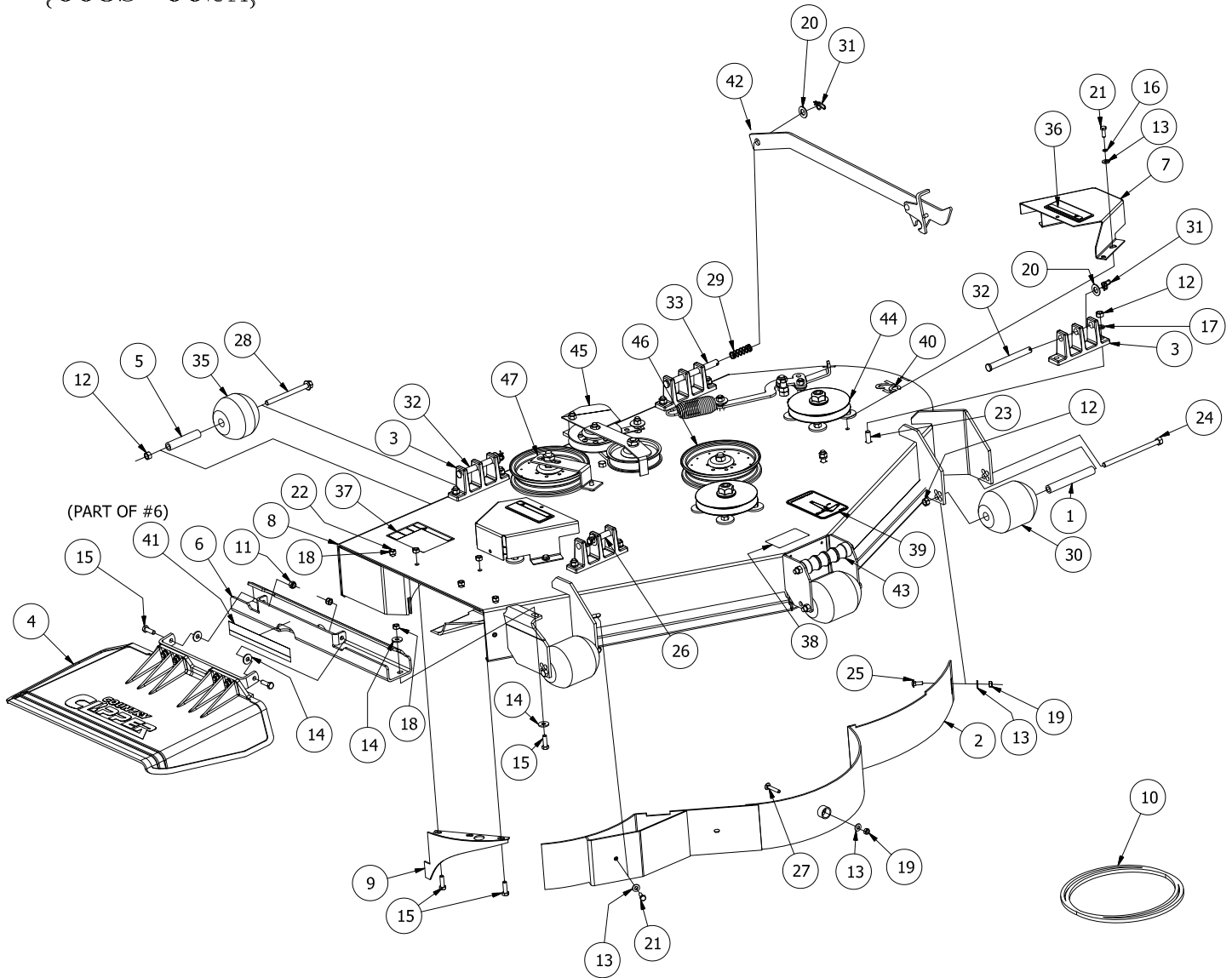
SECTION 2 – TRACTOR FRAME AND RELATED PARTS

10. CASTER WHEEL ASSEMBLY
11. FRAME SIDES & RELATED PARTS
12. FENDER ASSEMBLY
13. SEAT, FOOT DECK ASSEMBLY & RELATED PARTS
14. FRONT STEP ASSEMBLY
15. R.O.P.S. ASSEMBLY (ROLL OVER PROTECTION SYSTEM) & RELATED PARTS

SECTION 3 – TRACTOR DRIVE AND RELATED PARTS

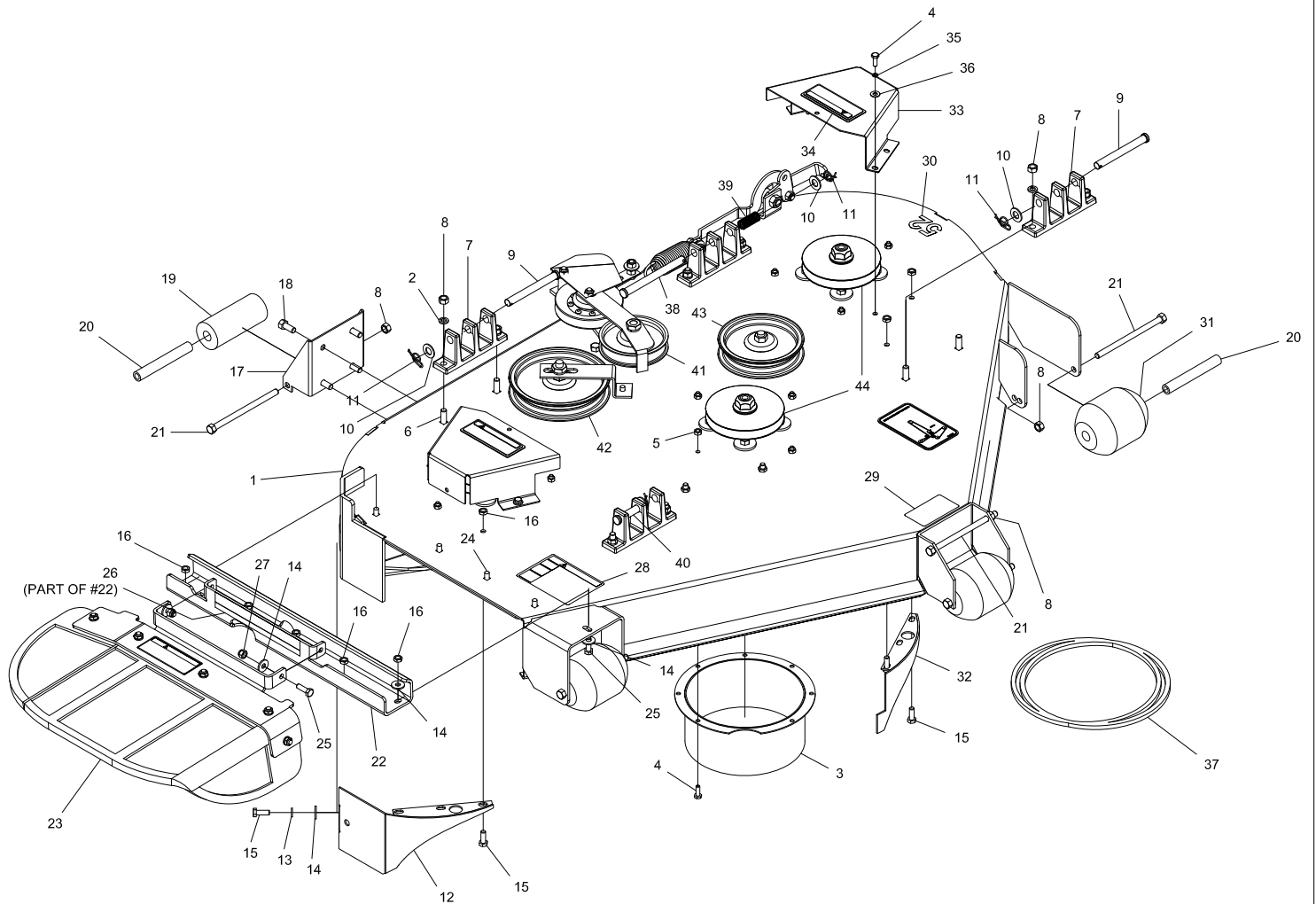
16. FUEL TANK ASSEMBLY
17. JOYSTICK STEERING CONTROL & RELATED PARTS
18. JOYSTICK STEERING CONTROL & RELATED PARTS (CON'T)
19. TWIN STICK STEERING CONTROL & RELATED PART
20. PARKING BRAKE ASSEMBLY & RELATED PARTS
21. GEAR MOTOR WHEEL ASSEMBLY
22. MOTOR ASSEMBLY & RELATED PARTS
23. HIGH PRESSURE LINES & FITTINGS
24. OIL RETURN LINES & COOLER ASSEMBLY
25. E-6415 WIRE HARNESS ASSEMBLY & RELATED PARTS
26. E-6416 WIRE HARNESS ASSEMBLY & RELATED PARTS
27. E-6417 WIRE HARNESS ASSEMBLY & RELATED PARTS

52" HEAVY
DECK ASSEMBLY
{668S-002A}



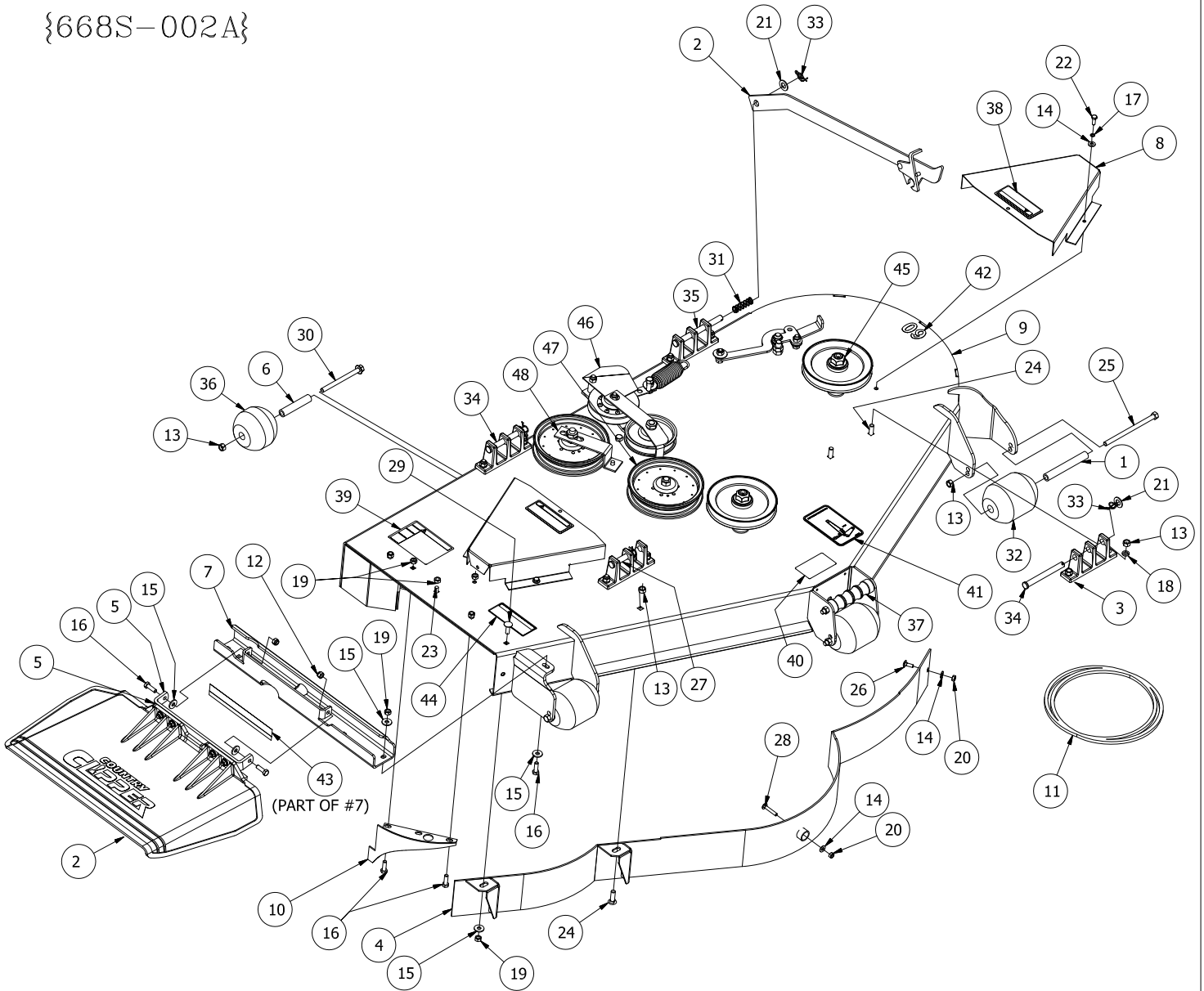
REF NO.	PART NO.	QTY.	DESCRIPTION	REF NO.	PART NO.	QTY.	DESCRIPTION
1	609-183P	3	BUSHING	25	F-1823	1	Carriage Bolt, 1/4 X 3/4"
2	629-229W	1	DUST BAFFLE, 52"	26	F-1889	1	1/2 x 2-5/8" Clevis Pin
3	643-016W	4	Hanger Weldment	27	F-1935	1	CARRIAGE BOLT, 1/4 X 1-1/2"
4	643-111A	1	CHUTE ASS'Y	28	F-2160	2	FHCS, 3/8-16 x 4 1/2", YZ, GR5
5	643-126P	2	BUSHING	29	F-2575	1	SPRING, COMP .656 X .052 X 1.97
6	643-135A	1	OUTLET STIFFENER w/DECAL	30	H-1948	3	Roller, 3-3/4 DIA. x 4-13/16L
7	660-139P	2	COVER, PULLEY, SPLD SPIND	31	H-2239	4	1/2" Rue Ring
8	668-071A	1	52" HVY DECK w/DECALS	32	H-2240	2	1/2" x 4-1/2" Clevis Pin
9	686-006W	1	SPLITTER BAFFLE	33	H-2718	1	1/2" x 5-1/2" Clevis Pin
10	D-3872	1	BELT, B-184	34	H-2723	1	Chute, Discharge, Small
11	F-1005-02	2	5/16-18 Nyloc Nut	35	H-2772	2	Roller, 3-3/4 DIA. x 3 1/4"L
12	F-1005-03	24	3/8-16 Stover Nut	36	P-10935	2	Decal, WARNING
13	F-1009-01	7	1/4" Flat Washer	37	P-10941	1	DECAL "DANGER ROTATING BLADES"
14	F-1009-02	4	5/16" Flat Washer	38	P-11413	1	DECAL, HOIST POINT
15	F-1015-15	5	5/16-18 x 1" Capscrew	39	P-11932	1	DECAL, JAZEE DECK BELT ROUTING
16	F-1019-01	4	1/4" LockWasher	40	P-11951	1	DECAL, DECK SIZE, 52
17	F-1019-03	20	3/8" LOCKWASHER	41	P-12496	1	DECAL, MISSING CHUTE
18	F-1125	7	5/16-18 Stover Nut	42	625-114A	1	DECK PROP ASS'Y
19	F-1158	2	1/4-20 Stover Nut	43	H-2787	1	GRIP DECK HANDLE
20	F-1521	8	1/2" WASHER, CUSTOM	44	-----	3	SPINDEL ASS'Y (SEE pg.4)
21	F-1538	5	1/4-20 x 3/4" Capscrew	45	-----	1	DOUBLE IDLER ASS'Y (SEE pg.5)
22	F-1671	3	5/16-18 x 3/4" CARRIAGE BOLT	46	-----	1	FRONT IDLER ASS'Y (SEE pg.5)
23	F-1672	8	3/8-16 x 1-1/4" Carraige Bolt	47	-----	1	REAR IDLER ASS'Y (SEE pg.5)
24	F-1741	4	3/8-16 x 6" Capscrew				

52" TRI-PORT DECK ASSEMBLY



REF NO.	PART NO.	QTY.	DESCRIPTION	REF NO.	PART NO.	QTY.	DESCRIPTION
1	686-100A	1	52" TRIPORT DECK w/DECALS	23	660-122A	1	RUBBER CHUTE ASS'Y, SM.
2	F-1019-03	20	3/8" LOCKWASHER	24	F-1671	4	5/16-18 x 3/4" CARRIAGE BOLT
3	686-059W	3	8" TUBE WLDT.	25	F-1015-15	3	5/16-18 x 1" Capscrew
4	F-1538	14	1/4-20 x 3/4" Capscrew	26	P-12496	1	DECAL, MISSING CHUTE
5	F-1158	10	1/4-20 Stover Nut	27	F-1005-02	2	5/16-18 Nyloc Nut
6	F-1672	8	3/8-16 x 1-1/4" Carriage Bolt	28	P-10941	1	DECAL "DANGER ROTATING BLADES"
7	643-016W	4	Hanger Weldment	29	P-11413	1	DECAL, HOIST POINT
8	F-1005-03	33	3/8-16 Stover Nut	30	P-11951	1	DECAL, DECK SIZE, 52
9	H-2240	2	1/2" x 4-1/2" Clevis Pin	31	H-1948	3	Roller, 3-3/4 DIA. x 4-13/16L
10	F-1521	6	1/2" WASHER, CUSTOM	32	686-006W	2	SPLITTER BAFFLE
11	H-2239	4	1/2" Rue Ring	33	660-146A	2	PULLEY COVER w/DECALS
12	686-018W	1	BAFFLE, DISCHARGE WLDT	34	P-10935	2	Decal, WARNING
13	F-1019-02	1	5/16" LockWasher	35	F-1019-01	4	1/4" LockWasher
14	F-1009-02	5	5/16" Flat Washer	36	F-1009-01	4	1/4" Flat Washer
15	F-1015-14	6	5/16-18 x 7/8" Capscrew	37	D-3872	1	BELT, B-184
16	F-1125	11	5/16-18 Stover Nut	38	H-2718	1	1/2" x 5-1/2" Clevis Pin
17	659-139P	2	SCALPER BRACKET	39	F-2575	1	SPRING, COMP .656 X .052 X 1.97
18	F-1558	8	3/8-16 x 7/8" Capscrew	40	F-1889	1	1/2 x 2-5/8" Clevis Pin
19	660-076P	2	ROLLER	41	-----	1	DOUBLE IDLER ASS'Y - SEE PAGE 6
20	609-183P	5	BUSHING	42	-----	1	RIGHT REAR IDLER ASS'Y - SEE PAGE 6
21	F-1741	6	3/8-16 x 6" Capscrew	43	-----	1	FRONT IDLER ASS'Y - SEE PAGE 6
22	643-135A	1	OUTLET STIFFENER w/DECAL	44	-----	3	SPINDEL ASS'Y - SEE PAGE 4

60" HEAVY
DECK ASSEMBLY
{668S-002A}

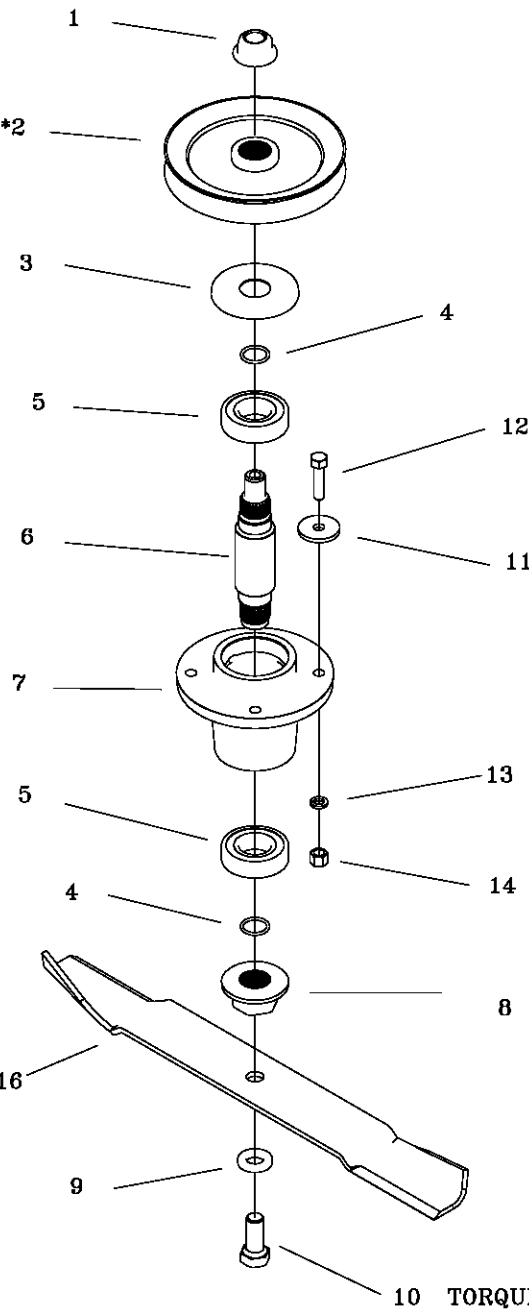


REF NO.	PART NO.	QTY.	DESCRIPTION	REF NO.	PART NO.	QTY.	DESCRIPTION
1	609-183P	3	BUSHING	25	F-1741	4	3/8-16 x 6" Capscrew
2	643-111A	1	CHUTE ASS'Y	26	F-1823	1	Carriage Bolt, 1/4 X 3/4"
3	643-016W	4	Hanger Weldment	27	F-1889	1	1/2 x 2-5/8" Clevis Pin
4	643-104W	1	60" DUST BAFFLE WELDMENT	28	F-1935	1	CARRIAGE BOLT, 1/4 X 1-1/2"
5	643-110P	1	CHUTE HINGE	29	F-2066	6	5/16-18 x 1" CARRIAGE BOLT,
6	643-126P	2	BUSHING	30	F-2160	2	FHCS, 3/8-16 x 4 1/2", YZ, GR5
7	643-135A	1	OUTLET STIFFENER w/DECAL	31	F-2575	1	SPRING, COMP .656 X .052 X 1.97
8	668-055P	2	COVER,PULLEY 60"	32	H-1948	3	Roller, 3-3/4 DIA. x 4-13/16L
9	668-072A	1	60" HVY DECK w/DECALS	33	H-2239	4	1/2" Rue Ring
10	686-006W	1	SPLITTER BAFFLE	34	H-2240	2	1/2" x 4-1/2" Clevis Pin
11	D-3872	1	BELT, B-184	35	H-2718	1	1/2" x 5-1/2" Clevis Pin
12	F-1005-02	2	5/16-18 Nyloc Nut	36	H-2772	2	Roller, 3-3/4 DIA. x 3 1/4"L
13	F-1005-03	24	3/8-16 Stover Nut	37	H-2787	1	GRIP, DECK HANDLE
14	F-1009-01	6	1/4" Flat Washer	38	P-10935	2	Decal, WARNING
15	F-1009-02	5	5/16" Flat Washer	39	P-10941	1	DECAL "DANGER ROTATING BLADES"
16	F-1015-15	5	5/16-18 x 1" Capscrew	40	P-11413	1	DECAL, HOIST POINT
17	F-1019-01	4	1/4" LockWasher	41	P-11932	1	DECAL, JAZEE DECK BELT ROUTING
18	F-1019-03	20	3/8" LOCKWASHER	42	P-11952	1	DECAL, DECK SIZE, 60
19	F-1125	9	5/16-18 Stover Nut	43	P-12496	1	DECAL, MISSING CHUTE
20	F-1158	2	1/4-20 Stover Nut	44	P-12706	1	WARNING DECAL, DISCHARGE CHUTE
21	F-1521	9	1/2" WASHER, CUSTOM	45	-----	3	SPINDLE ASS'Y (SEE pg4.)
22	F-1538	4	1/4-20 x 3/4" Capscrew	46	-----	1	DOUBLE IDLER ASS'Y (SEE pg.5)
23	F-1671	3	5/16-18 x 3/4" CARRIAGE BOLT	47	-----	1	FRONT IDLER ASS'Y (SEE pg.5)
24	F-1672	9	3/8-16 x 1-1/4" Carriage Bolt	48	-----	1	REAR IDLER ASS'Y (SEE pg.5)

TORQUE TO 140 ft-lb

DECK SPINDLE ASSEMBLY 629FN-001A

PULLEY NOT INCLUDED *2
IN ASSEMBLY



BLADE NOT INCLUDED *16
IN ASSEMBLY

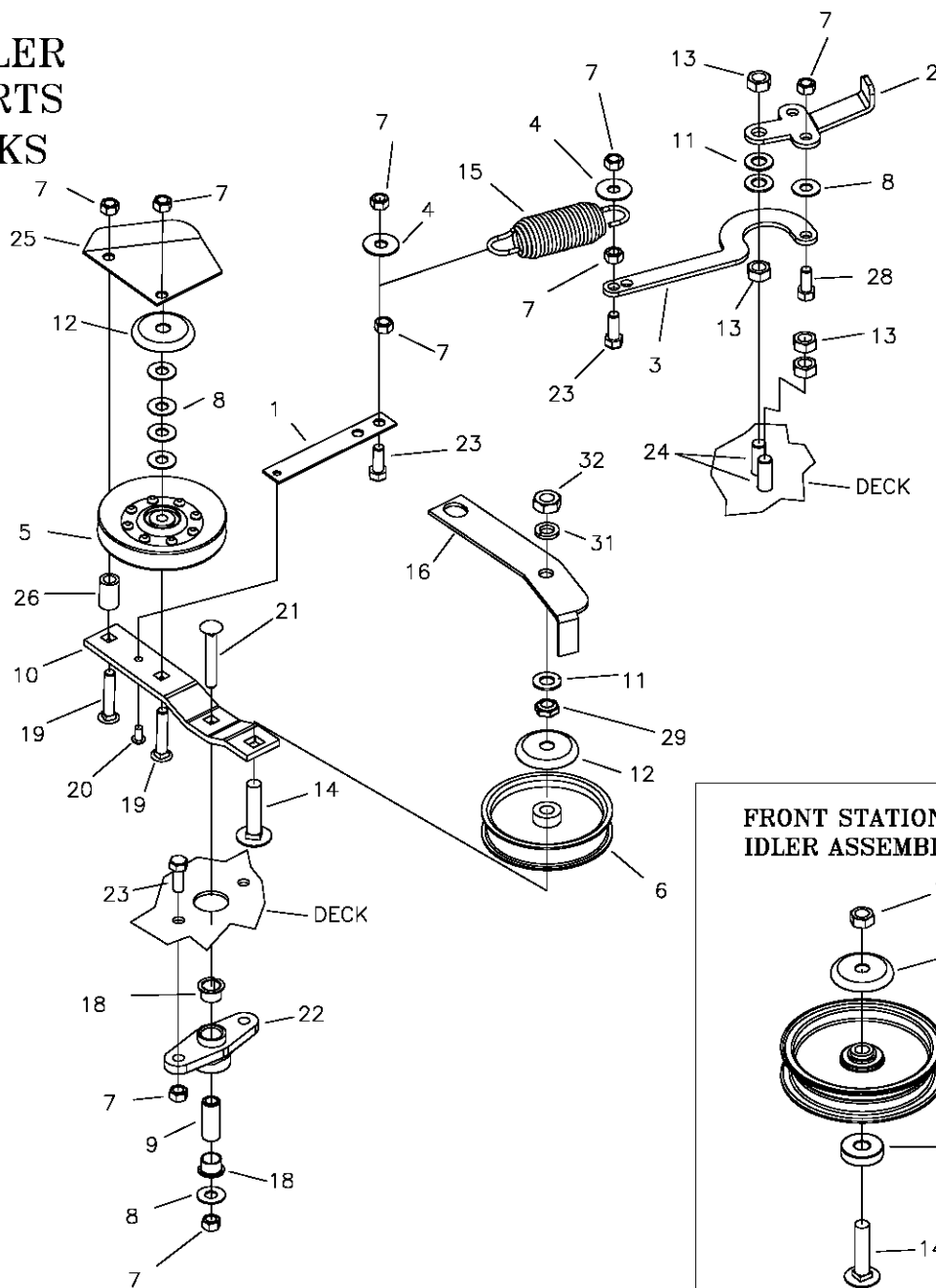
15 (APPLY THIN LAYER OF CHEVRON RYKOTAC GREASE TO THE TOP SURFACES OF THE BEARING AND HOUSING PRIOR TO INSTALLING ITEM #3 (BEARING CAP).

NEW MOWERS ARE SHIPPED WITH 3 to 4 oz OF CHEVRON SRI NLGI 2 GREASE INSIDE EACH SPINDLE HOUSING.

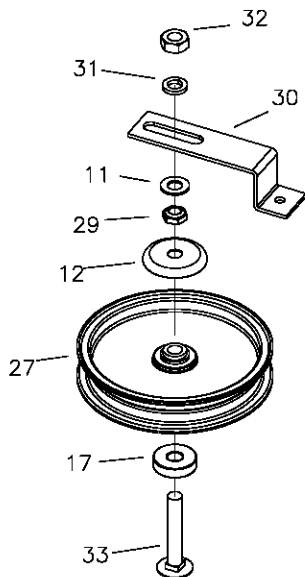
10 TORQUE TO 100 ft-lb

REF NO.	PART NO.	QTY.	DESCRIPTION	REF NO.	PART NO.	QTY.	DESCRIPTION
1	F-2078	1	3/4-6 TOP LOCK NUT	15	H-2707	1	GREASE PACKET
	668-050P	*	52" DECK CENTER PULLEY	16	H-2648	-	BLADE, HIGH L, 18 3/8" CUT 52"
*	668-042P	*	60" DECK CENTER PULLEY		H-2649	-	BLADE, HIGH L, 21" CUT 60"
3	609-292P	1	CAP, BEARING	OPTIONAL BLADES			
4	H-2639	2	O'RING, RUBBER				
5	D-3867	2	BEARING, #6206				
6	609-289P	1	SHAFT, SPINDLE				
7	609-285P	1	HOUSING, SPINDLE				
8	609-288P	1	BLADE DRIVER				
9	660-099P	1	BLADE WASHER				
10	F-2073	1	5/8-11 X 1.5 HHCS GR. 8				
11	609-034P	4	SPINDLE SPACER, WASHER		H-2660	-	BLADE, LOW L, 18 3/8" CUT, 52"
12	F-1572	4	3/8-24 X 1.5 CAP SCREW		H-2661	-	BLADE, LOW L, 21" CUT, 60"
13	F-1019-03	4	3/8 LOCK WASHER		H-2666	-	BLADE, GATOR, 18 3/8" CUT 52"
14	F-1573	4	3/8-24 LOCK NUT		H-2667	-	BLADE, GATOR, 21" CUT 60"

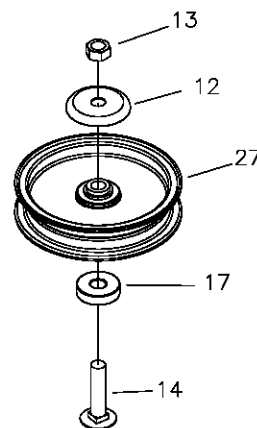
DOUBLE IDLER DRIVE BELT IDLER & RELATED PARTS 52" & 60" DECKS



RIGHT REAR STATIONARY IDLER ASSEMBLY

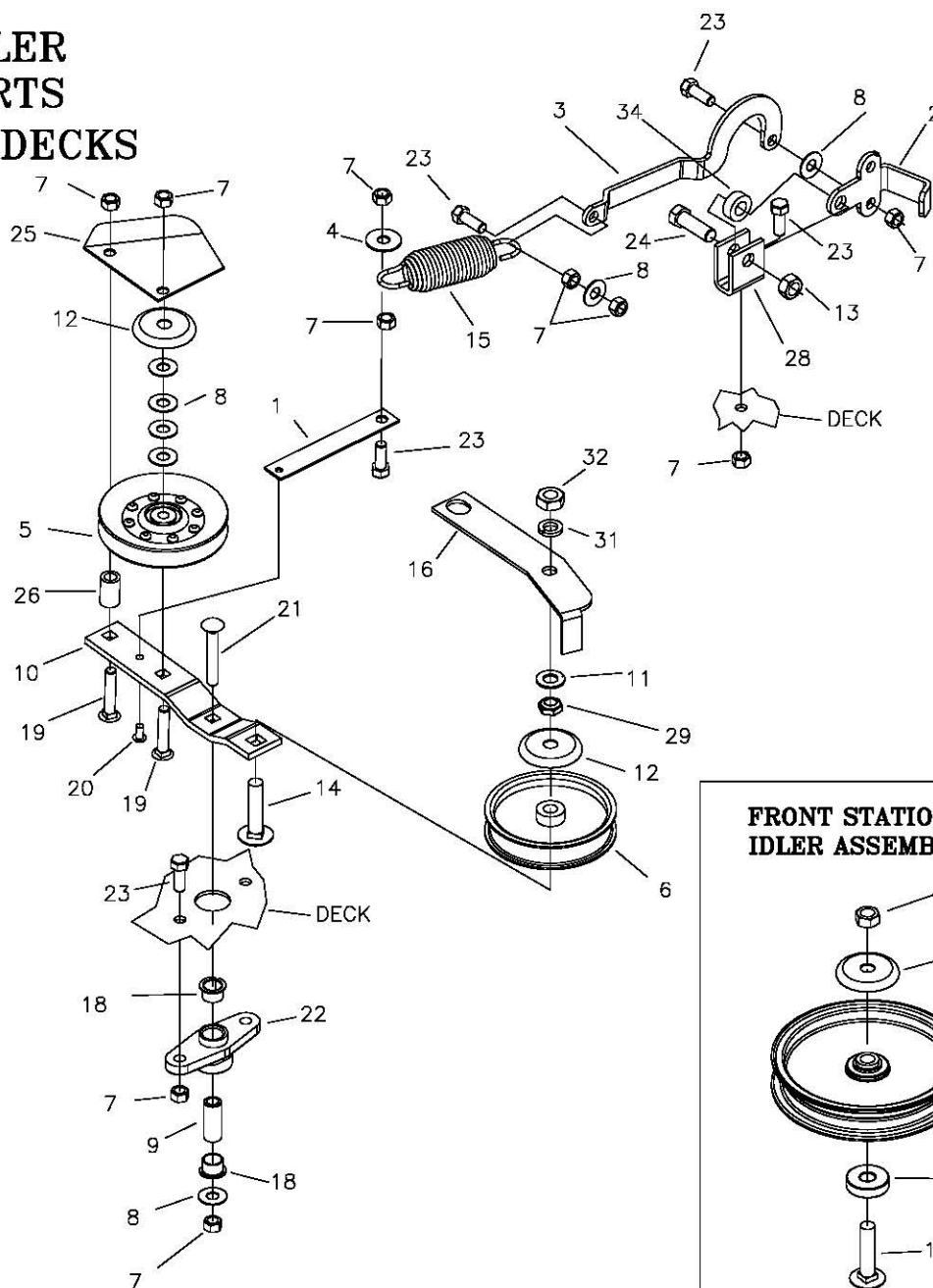


FRONT STATIONARY IDLER ASSEMBLY

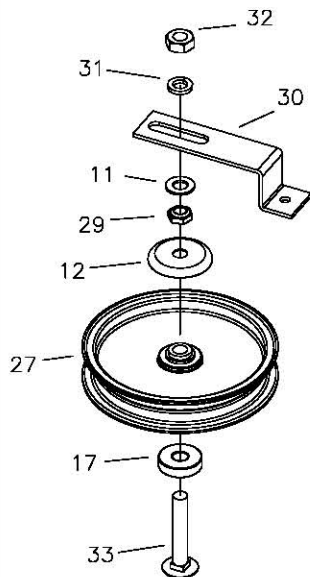


REF NO.	PART NO.	QTY.	DESCRIPTION	REF NO.	PART NO.	QTY.	DESCRIPTION
1	660-081P	1	EXTENSION FOR SPRING	22	660-039P	1	MOUNT, DOUBLE IDLER
2	660-030P	1	HANDLE, BELT TIGHTENER	23	F-1394	4	3/8-16 X 1" GR. 5
3	660-031P	1	ARM, BELT TIGHTENER	24	F-1526	2	1/2-13 X 1-1/2" GR. 5
4	F-2083	2	WASHER, 3/8 FENDER	25	668-029P	1	BELT GUARD
5	D-3758	1	"V" IDLER PULLEY	26	668-021P	1	SPACER, BELT GUARD
6	D-3338	1	IDLER PULLEY	27	D-3903	2	6" IDLER PULLEY
7	F-1005-03	10	3/8 LOCK NUT	28	F-1558	1	3/8-16 X 7/8 GR. 5
8	F-1009-03	6	3/8 FLAT WASHER	29	F-1966	2	1/2" THIN NYLOC NUT
9	659-085P	1	MOUNTING PIN	30	660-114P	1	BELT KEEPER, SINGLE END
10	660-036P	1	IDLER ARM	31	F-1464	2	1/2" LOCK WASHER
11	F-1521	4	1/2" FLAT WASHER	32	F-1489	2	1/2" THIN NUT
12	620-201P	4	BEARING CAP	33	F-2047	1	1/2"-13 X 3" CARRIAGE BOLT
13	F-1005-05	5	1/2" LOCK NUT				
14	F-1822	2	1/2-13 X 2-1/4" GR. 5				
15	H-2619	1	SPRING, 5x1-1/2, TAPERED ENDS				
16	660-107P	1	BELT KEEPER				
17	660-082P	2	SPACER				
18	D-3730	2	BUSHING, TEFLON COATED				
19	F-1976	2	3/8-16 X 1-3/4" CARRIAGE BOLT				
20	F-1733	1	1/4" DRIVE STUD				
21	F-1865	1	3/8-16 X 2-1/2" CARRIAGE BOLT				

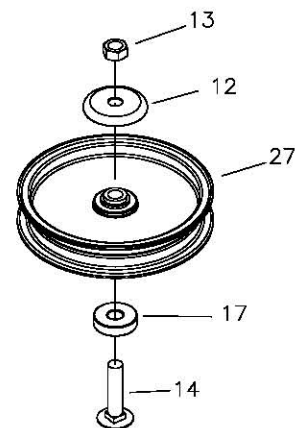
DOUBLE IDLER DRIVE BELT IDLER & RELATED PARTS 52" TRI-PORT DECKS



RIGHT REAR STATIONARY IDLER ASSEMBLY

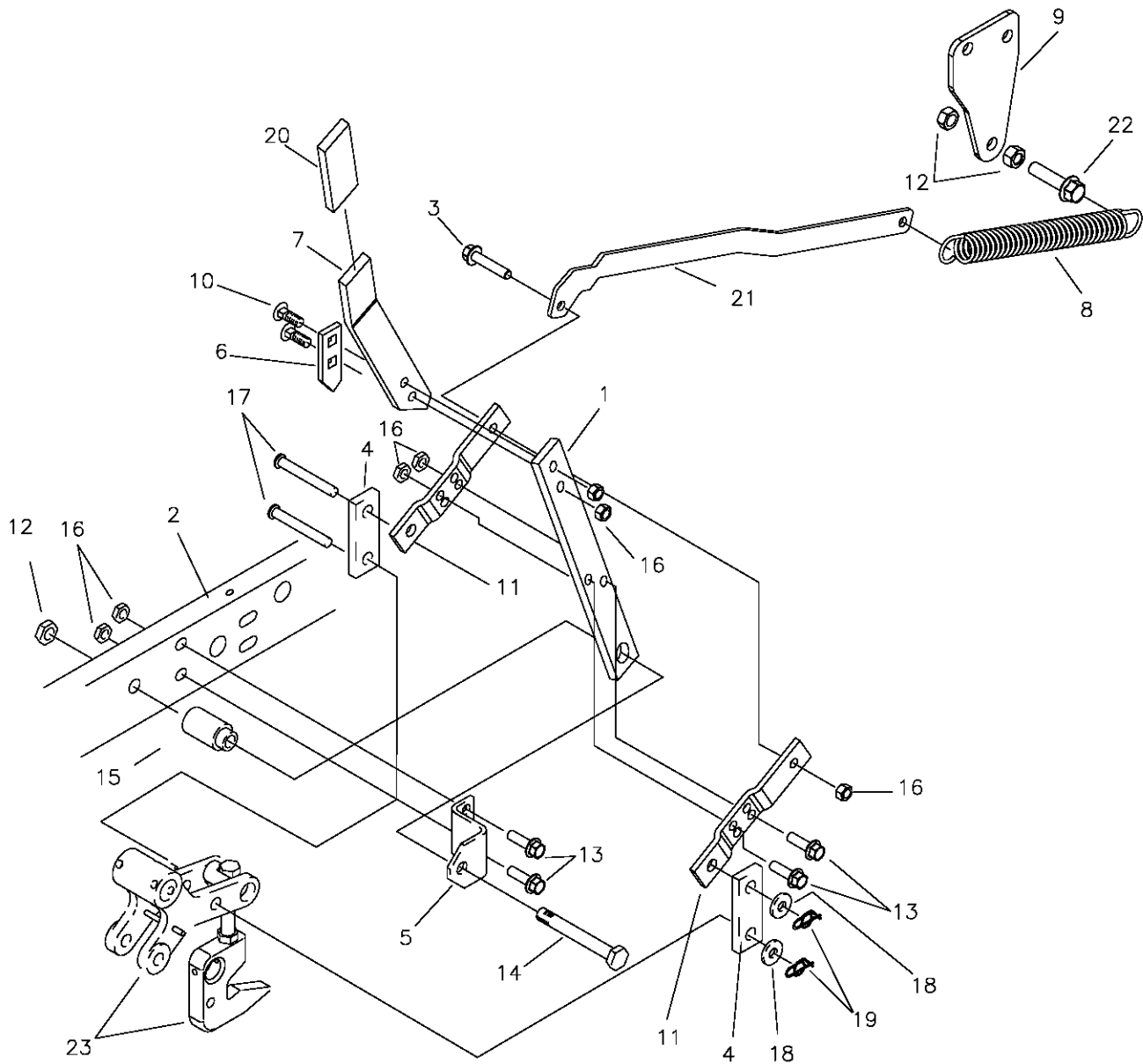


FRONT STATIONARY IDLER ASSEMBLY



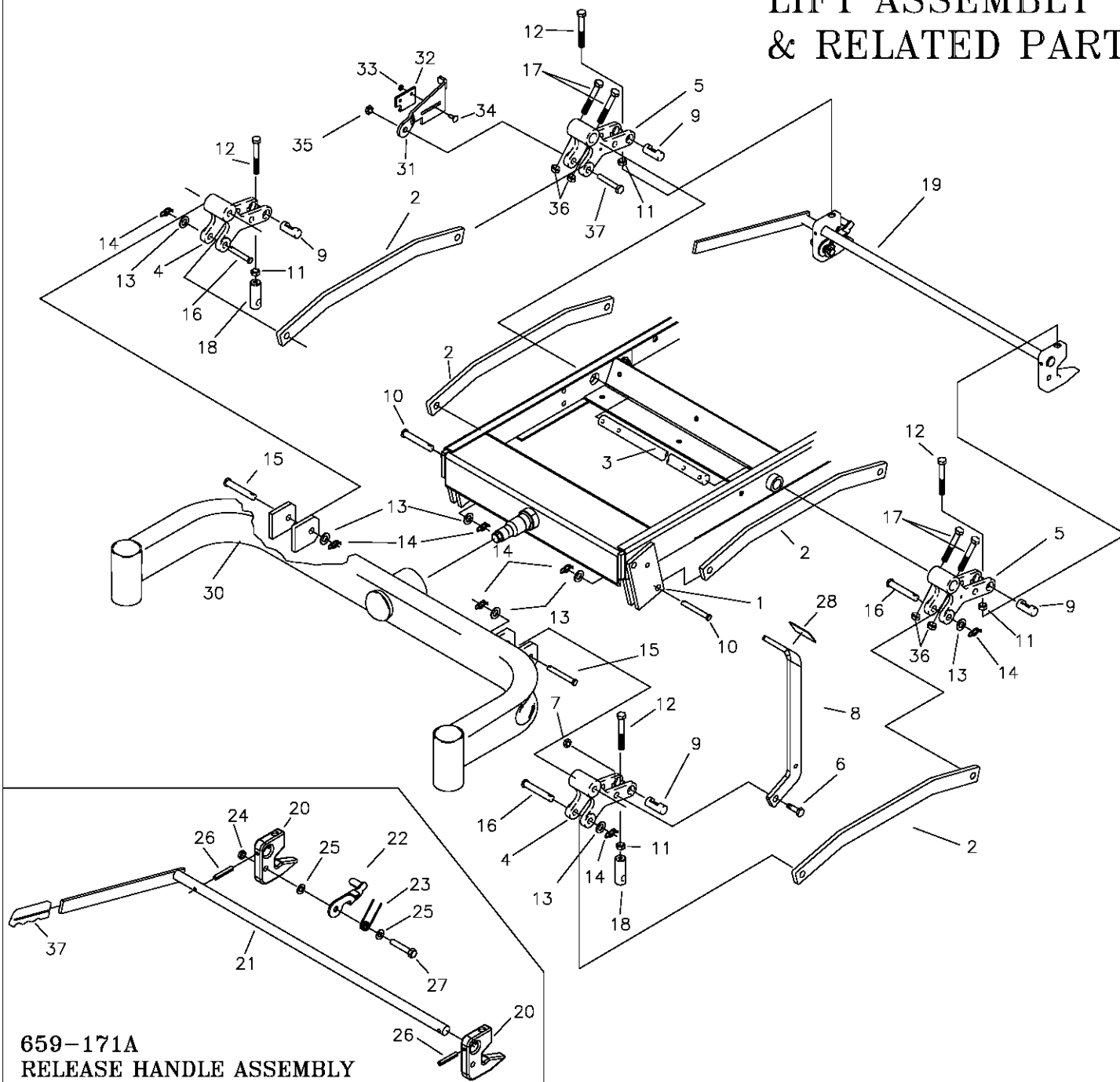
REF NO.	PART NO.	QTY.	DESCRIPTION	REF NO.	PART NO.	QTY.	DESCRIPTION
1	660-035P	1	EXTENSION FOR SPRING	22	660-039P	1	MOUNT, DOUBLE IDLER
2	686-101P	1	HANDLE, BELT TIGHTENER	23	F-1394	6	3/8-16 X 1" GR. 5
3	686-081P	1	BELT TENSIONER	24	F-1526	1	1/2-13 X 1-1/2" GR. 5
4	F-2083	1	WASHER, 3/8 FENDER	25	668-029P	1	BELT GUARD
5	D-3758	1	"V" IDLER PULLEY	26	668-021P	1	SPACER, BELT GUARD
6	D-3338	1	IDLER PULLEY	27	D-3903	2	6" IDLER PULLEY
7	F-1005-03	10	3/8 LOCK NUT	28	661-015P	1	SHACKLE
8	F-1009-03	7	3/8 FLAT WASHER	29	F-1966	4	1/2" THIN NYLOC NUT
9	659-085P	1	MOUNTING PIN	30	660-114P	1	BELT KEEPER, SINGLE END
10	660-036P	1	IDLER ARM	31	F-1464	2	1/2" LOCK WASHER
11	F-1521	4	1/2" FLAT WASHER	32	F-1489	2	1/2" THIN NUT
12	620-201P	4	BEARING CAP	33	F-2047	1	1/2"-13 X 3" CARRIAGE BOLT
13	F-1005-05	2	1/2" LOCK NUT	34	660-038P	1	3/8" SPACER
14	F-1822	2	1/2-13 X 2-1/4" GR. 5				
15	H-2619	1	SPRING, 5x1-1/2, TAPERED ENDS				
16	660-107P	1	BELT KEEPER				
17	660-082P	2	SPACER				
18	D-3730	2	BUSHING, TEFLON COATED				
19	F-1976	2	3/8-16 X 1-3/4" CARRIAGE BOLT				
20	F-1733	1	1/4" DRIVE STUD				
21	F-1865	1	3/8-16 X 2-1/2" CARRIAGE BOLT				

LIFT HANDLE ASSEMBLY & RELATED PARTS



REF NO.	PART NO.	QTY.	DESCRIPTION	REF NO.	PART NO.	QTY.	DESCRIPTION
1	709-102P	1	LIFT HANDLE, LOWER	15	642-095P	1	HANDLE PIVOT PIN
2	659-022W	1	FRAME WELDMENT, LH.	16	F-1005-03	7	NUT, 3/8-16 LOCKNUT (STOVER)
3	F-2126	1	3/8-16 X 2" CAPSCREW	17	F-1889	2	CLEVIS PIN, 1/2 X 2 5/8"
4	642-061P	2	HANDLE LINK	18	F-1521	2	1/2" FLAT WASHER
5	642-041P	1	HANDLE PIVOT BRACKET	19	H-2239	2	RUE RING, 1/2"
6	642-127P	1	TOP PEG LATCH PLATE	20	H-2324	1	VINYL GRIP, 3/8 X 1 1/2"
7	659-355P	1	LIFY HANDLE, UPPER	21	663-080P	1	BAR, SPRING EXT.
8	H-1610	1	SPRING, 1 1/2" OD. X 8"	22	F-1293	1	1/2-13 X 2" GR. 5
9	663-120P	1	PLT, SPRING MOUNT	23	-----	-	SEE PAGE 8
10	F-1672	2	CARRIAGE BOLT, 3/8-16 X 1 1/4"				
11	642-060P	2	SPRING ANCHOR PLATE				
12	F-1005-05	3	NUT, 1/2-13 LOCKNUT				
13	F-2125	4	1/2-13 X 1 1/4" GR. 5				
14	F-1439	1	1/2-13 X 3" GR. 5				

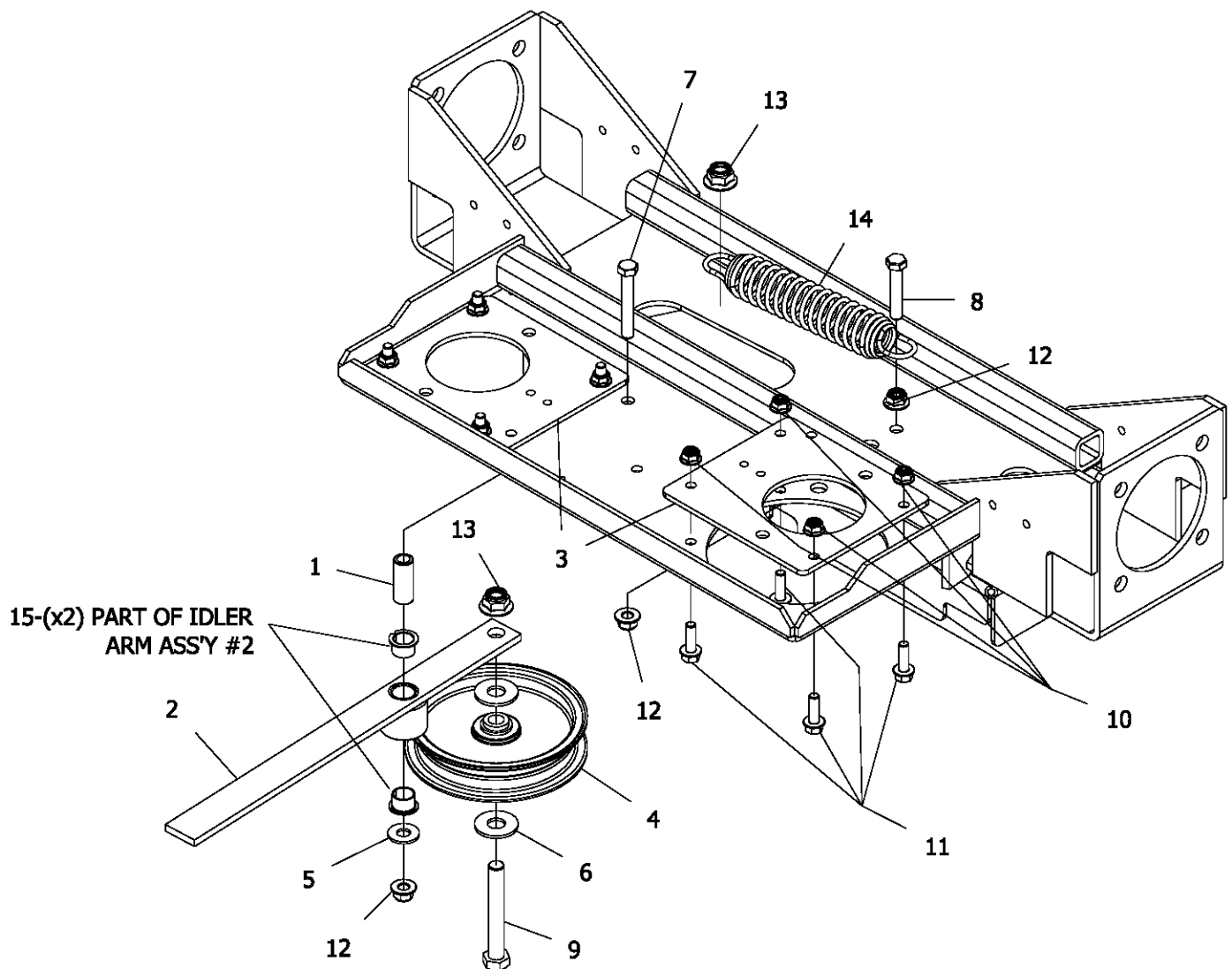
LIFT ASSEMBLY & RELATED PARTS



**659-171A
RELEASE HANDLE ASSEMBLY**

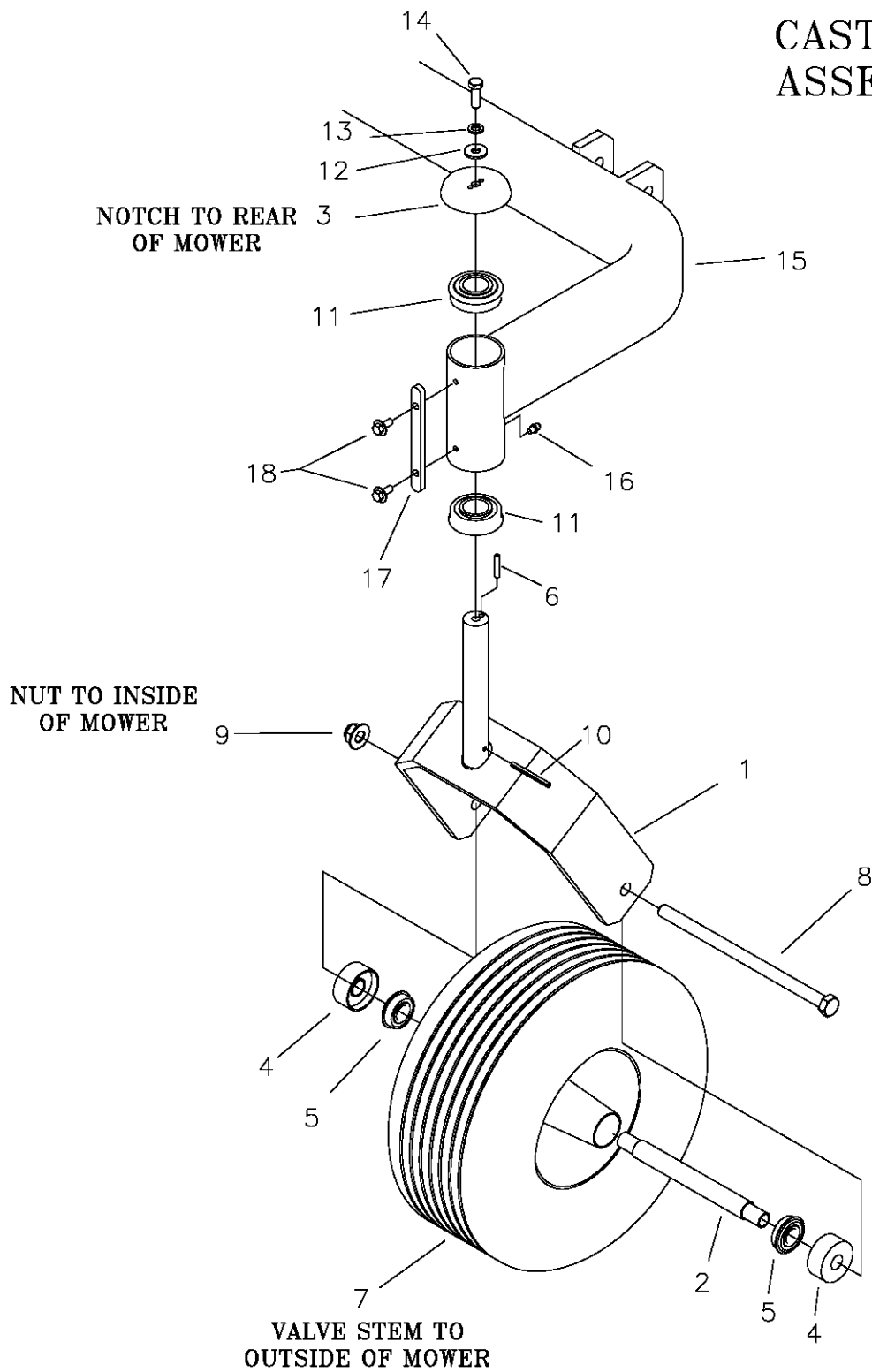
REF NO.	PART NO.	QTY.	DESCRIPTION	REF NO.	PART NO.	QTY.	DESCRIPTION
1	642-063P	2	DRAG BAR TAB	20	659-140P	2	DECK HOOK
2	659-299P	4	DRAG LINK BAR	21	659-148W	1	RELEASE HANDLE WELDMENT
3	620-051P	1	LIFT BAR	22	659-145P	1	HOOK KEEPER
4	642-081P	2	LIFT SLEEVE, FRONT	23	H-2547	1	SPRING, TORSION
5	642-193P	2	LIFT SLEEVE, REAR	24	F-1005-03	1	NUT, 3/8-16, STOVER
6	F-1879	1	5/16-18 X 1 1/4" GR.5	25	F-1009-03	2	WASHER, FLAT, 3/8"
7	F-1125	1	5/16-18 STOVER NUT	26	F-2009	2	SPIROL ROLL PIN 1/4 X 1-1/2
8	659-056P	1	DECK LIFT PEDAL	27	F-1073	1	CAPSCREW, 3/8-16 X 2, GR. 5
9	642-177P	4	HANGER PIN	28	H-2401	1	TREAD PAD
10	F-1815	2	CLEVIS PIN, 1/2 X 1 1/2"	29	H-1926	1	1/4"x1" HANDLE GRIP
11	F-1489	4	NUT, 1/2" JAM	30	SEE PAGE 2-7	1	FRONT AXLE WELDMENT
12	F-1936	4	1/2-13 X 3 1/2, 2" THREAD	31	663-089P	1	LATCH PLATE
13	F-1521	7	WASHER, 1/2 NARROW	32	659-170P	1	PLATE, CATCH
14	H-2239	7	RUE RING, 1/2"	33	F-1158	2	NUT, 1/4" STOVER
15	F-1890	2	CLEVIS PIN, 1/2 X 3 1/2"	34	F-1823	2	CARRIAGE BOLT, 1/4-20 X 3/4"
16	F-1898	3	CLEVIS PIN, 1/2 X 2 3/4"	35	F-1005-05	1	1/2" STOVER NUT
17	F-2039	4	5/16-24 x 2" HHCS	36	F-2041	4	5/16-24 JAM NUT
18	642-175P	2	ADJUSTABLE HANGER END	37	F-1828	1	1/2-13 x 3-1/2" CAPSCREW
19	659-171A	1	RELEASE HANDLE ASSEMBLY				

TRANSMISSION IDLERS & RELATED PARTS



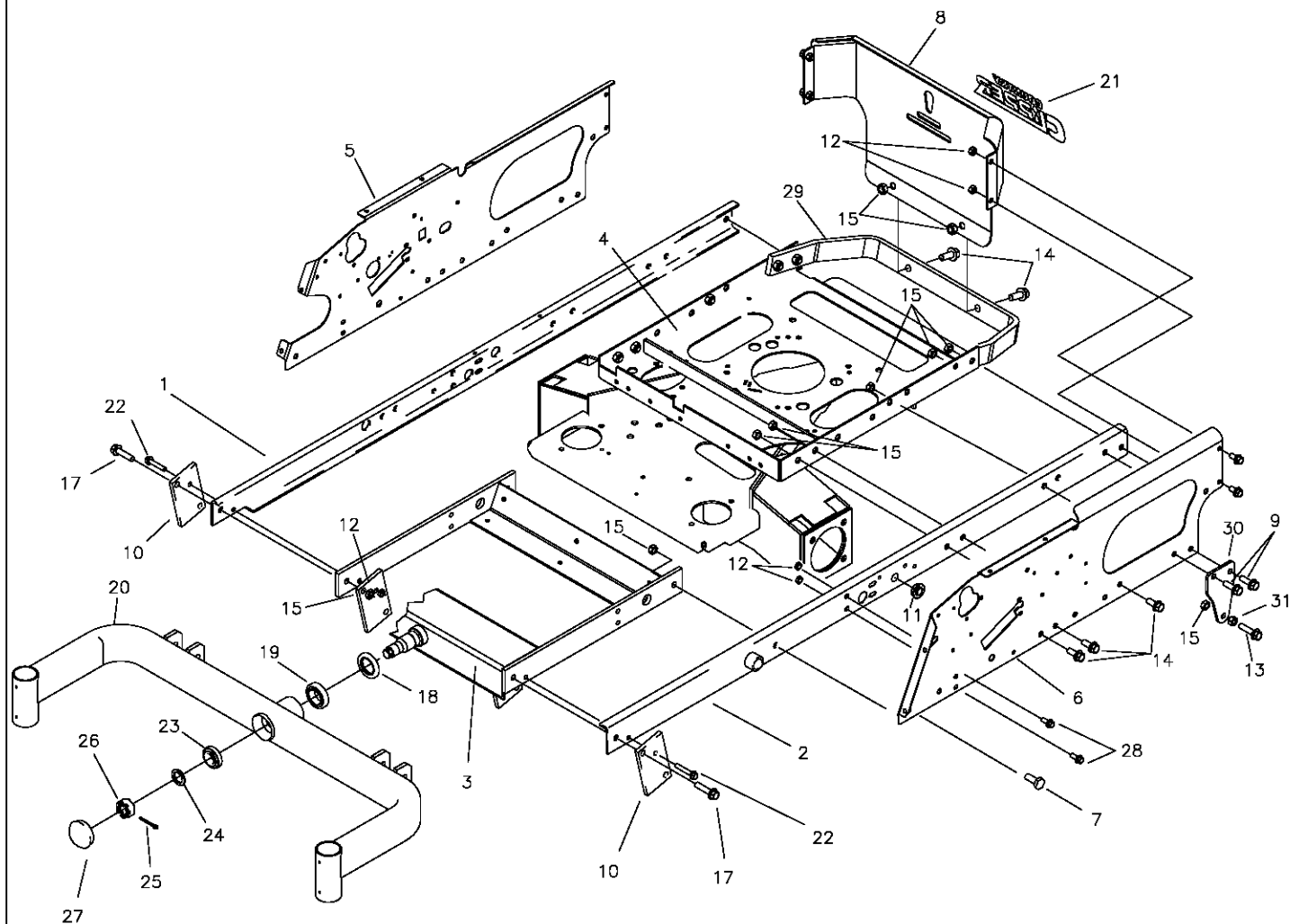
REF NO.	PART NO.	QTY.	DESCRIPTION	REF NO.	PART NO.	QTY.	DESCRIPTION
1	659-085P	1	Mounting Pin	9	F-1936	5	1/2-13 x 3-1/2" Capscrew
2	663-057A	1	Hydro Idler Arm Assembly	10	F-2063	66	Nut, 5/16-18 Nyloc, Flanged
3	663-146P	2	PLATE, PUMP ADAPTER	11	F-2148	10	FHCS, 5/16-18 x 1.00, YZ, GR5
4	D-3904	1	PULLEY, FLAT IDLER, 5"	12	F-2151	25	Nut, 3/8-16 Nyloc, Flanged
5	F-1009-03	2	3/8" Flat Washer	13	F-2152	31	Nut, 1/2-13 Nyloc, Flanged
6	F-1009-05	2	1/2" FLAT WASHER	14	H-2619	1	SPRING, 5 X 1-1/2, TAPERED ENDS
7	F-1015-30	1	3/8-16 x 2-1/2" Capscrew	15	D-3730	2	FLANGED BUSHING
8	F-1073	1	3/8-16 x 2" Capscrew				

CASTER WHEEL ASSEMBLY



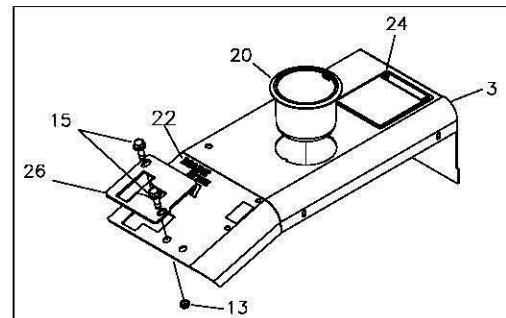
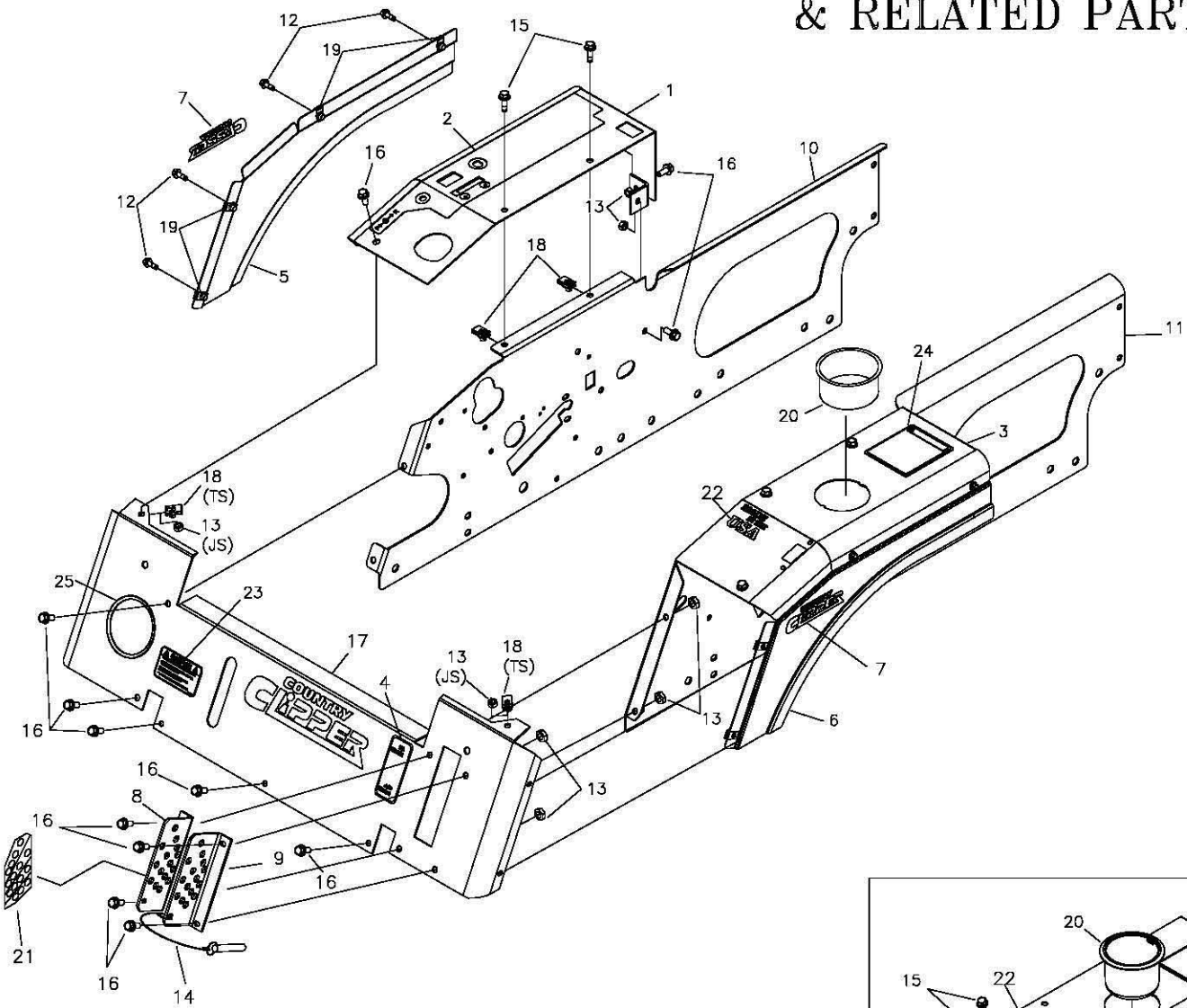
REF NO.	PART NO.	QTY.	DESCRIPTION	REF NO.	PART NO.	QTY.	DESCRIPTION
1	647-192W	2	CASTER WELDMENT	10	F-1456	2	3/16 ROLL PIN
2	647-038P	2	BEARING SPACER	11	D-2008-02	4	BEARING, SPD SF-16-32
3	636-177P	2	BEARING CAP	12	F-1009-02	2	5/16" FLAT WASHER
4	611-135P	4	BEARING SHIELD	13	F-1019-02	2	5/16" LOCK WASHER
5	D-3432	4	BEARING, 5/8 ID X 1 3/8 OD	14	F-1863	2	5/16-18 x 1" W/NYLON PATCH
6	F-1855	2	3/16" X 1" ROLL PIN	15	642-189W	1	FRONT AXLE WELDMENT
7	D-3670	2	FRONT TIRE/WHEEL	16	H-1056	2	GREASE ZERK
8	F-2159	2	HHCS 1/2-13x9 1/2" GR. 5 BOLT	17	659-187P	2	STOP TAB
9	F-2152	2	NUT, 1/2-13 NYLOC FLANGED	18	F-2030	4	1/4" X 5/8" SELF TAPPING SCREW

FRAME SIDES & RELATED PARTS



REF NO.	PART NO.	QTY.	DESCRIPTION	REF NO.	PART NO.	QTY.	DESCRIPTION
1	663-185W	1	FRAME SIDE RH.	16	F-2124	4	FHCS, 3/8-16 X 3/4" GR.5
2	663-187W	1	FRAME SIDE LH.	17	F-2128	2	FHCS, 1/2-13 X 2", GR.5
3	709-157W	1	AXLE MOUNTING WLDT.	18	H-2812	1	SEAL SHAFT
4	663-176W	1	MOTOR MOUNT WLDT.	19	D-3825	1	BEARING, TAPARED SET
5	663-188P	1	SIDE PANEL RH. (JOYSTICK)	20	642-189W	1	FRONT AXLE WELDMENT
-	663-195P	1	SIDE PANEL RH. (TWINSTICK)	21	P-12980	1	DECAL, CC, CHROME, LG
6	663-189P	1	SIDE PANEL LH. (JOYSTICK)	22	F-2126	2	FHCS, 3/8-16 X 2" GR.5
-	663-196P	1	SIDE PANEL LH. (TWINSTICK)	23	D-3826	1	BEARING, TAPARED SET
7	F-1386	2	1/2-13 X 1-1/4" GR.5	24	606-303P	1	1" WASHER
8	625-131A	1	ENGINE GUARD w/DECAL	25	F-1728	1	3/16 X 2" COTTER PIN
9	F-2140	4	FHCS, 1/2-13 X 1-1/2" GR.5	26	F-1724	1	1-14 SLOTTED NUT
10	642-063P	2	DRAG BAR TAB	27	H-1924	1	GREASE CAP
11	H-2773	2	BEARING, FLG-SPHERICAL, IGUS	28	F-2125	4	FHCS, 3/8-16 X 1-1/4"
12	F-1005-03	10	3/8-16 STOVER NUT	29	707-003P	1	GUARD, BUMPER
13	F-2128	1	FHCS, 1/2-13 X 2 GR.5	30	663-120P	1	PLATE, SPRING MOUNT
14	F-2127	15	FHCS, 1/2-13 X 1-1/4" GR.5	31	F-1011-05	1	HEX NUT, 1/2-13
15	F-1005-05	18	1/2-13 LOCK NUT				

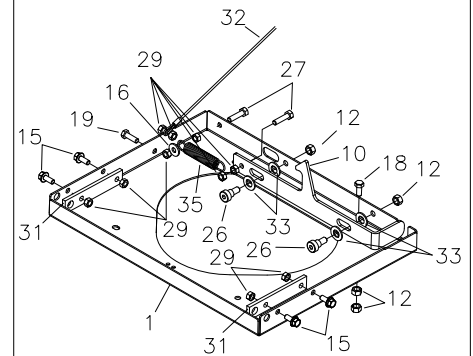
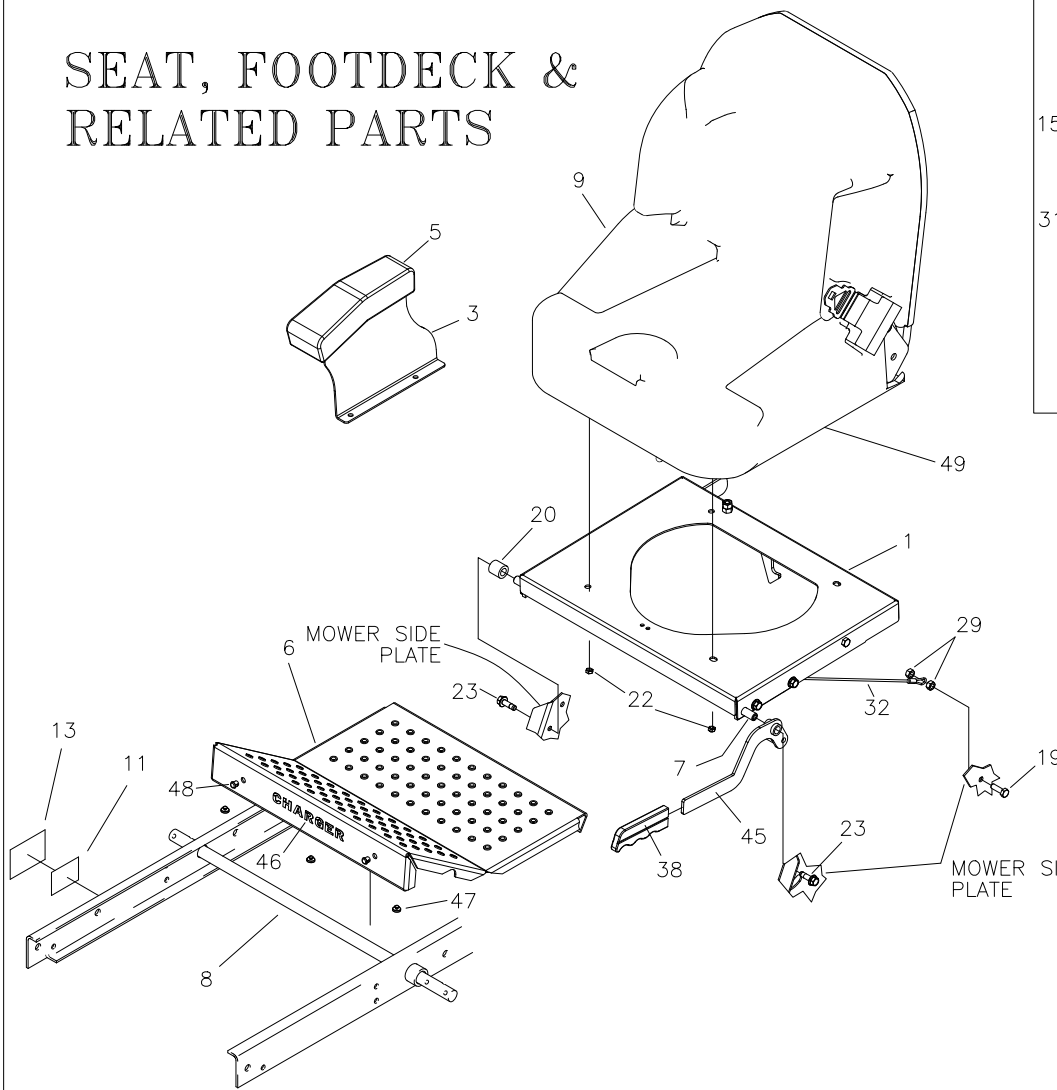
FENDER ASSEMBLY & RELATED PARTS



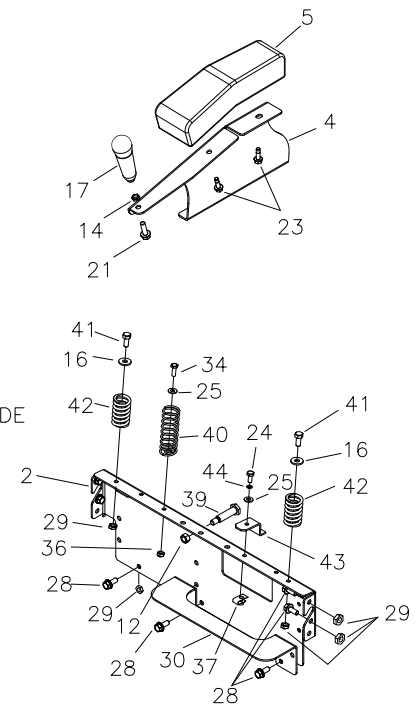
TWINSTICK FENDER ASSY

REF NO.	PART NO.	QTY.	DESCRIPTION	REF NO.	PART NO.	QTY.	DESCRIPTION
1	629-840A	1	FENDER CAP w/DECAL, RH, (JOYSTICK)	14	629-854A	1	LOCK PIN, DECK HEIGHT, ASS'Y
-	629-842A	1	FENDER CAP w/DECAL, RH, (TWINSTICK)	15	F-2121	8	FHCS, 5/16-18x1" GR.5 w/PATCH
2	P-12925	1	DECAL, CONTROL PANEL	16	F-2120	15	FHCS, 5/16-18 X 3/4" GR.5
3	629-841A	1	FENDER CAP w/DECAL, LH (JOYSTICK)	17	629-832A	1	FRONT PANEL w/DECALS
-	629-843A	1	FENDER CAP w/DECAL, LH (TWINSTICK)	18	F-1860	6	5/16-18 "U"-NUT
4	P-11382	1	DECAL, PARK BRAKE	19	F-1858	8	1/4-20 "U"-NUT
5	629-844A	1	FENDER SKIRT w/DECAL, RH	20	H-2228	1	CUP HOLDER
6	629-845A	1	FENDER SKIRT w/DECAL, LH	21	P-12034	1	DECAL, "CUT HEIGHT"
7	P-12979	2	DECAL, CC, CHROME, SM	22	P-13000	1	DECAL, "USA"
8	647-097A	1	LATCH PLATE RH W/DECAL	23	P-12557	1	DECAL, "CAUTION"
9	647-095P	1	LATCH PLATE LH.	24	P-11370	1	DECAL, WARNING
10	-----	1	SEE PAGE 11	25	H-1626	1	U CHANNEL TRIM
11	-----	1	SEE PAGE 11	26	659-262P	1	NEUTRAL PLATE
12	F-2119	8	FHCS, 1/4-20x3/4", GR.5 w/PATCH				
13	F-1125	13	5/16-18 LOCK NUT				

SEAT, FOOTDECK & RELATED PARTS



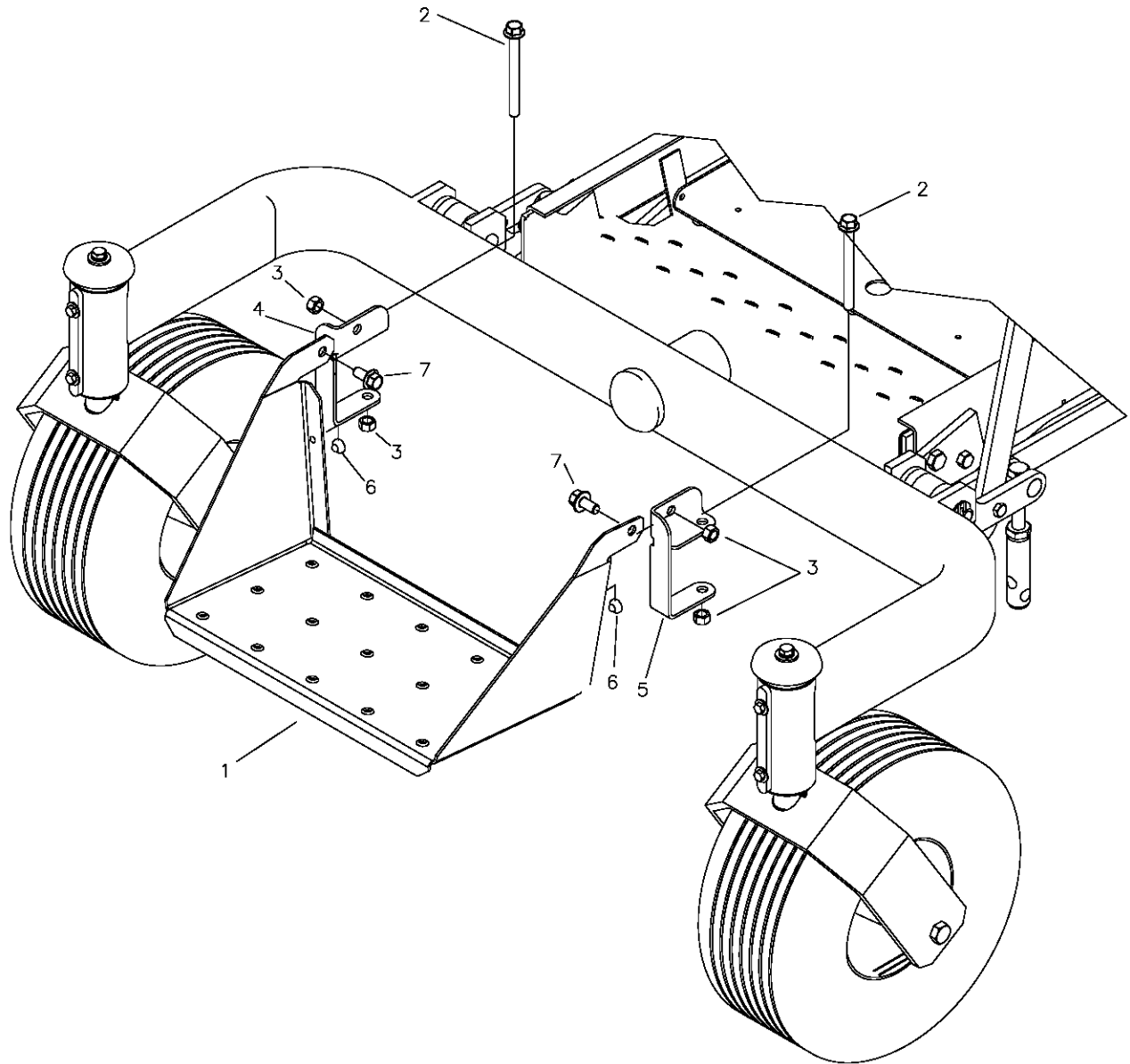
UNDERSIDE OF SEAT MOUNTING
BASE "#1" - LATCH PARTS



SEAT SWITCH NOT SHOWN
SEAT SWITCH P/N: E-6580

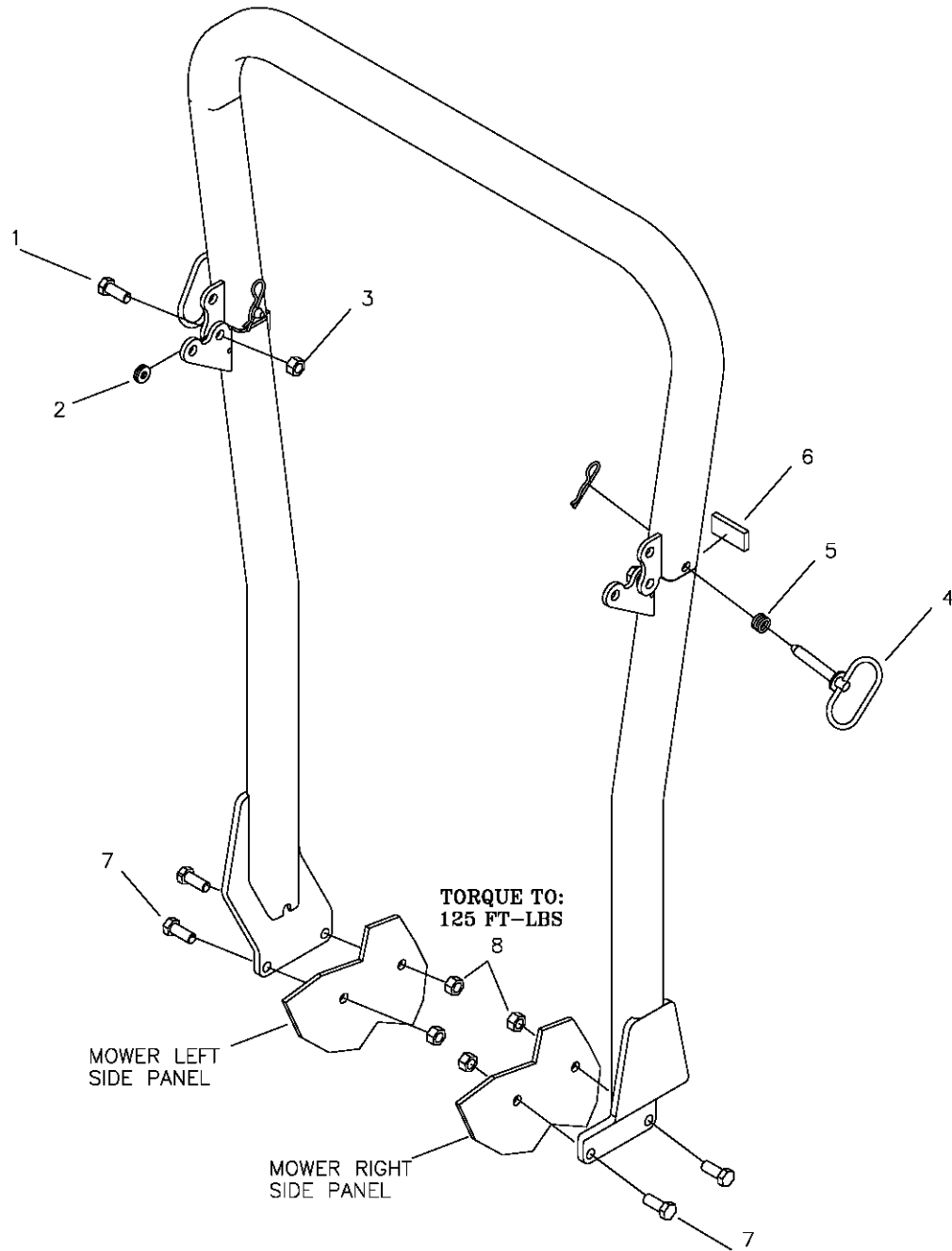
REF NO.	PART NO.	QTY.	DESCRIPTION	REF NO.	PART NO.	QTY.	DESCRIPTION
1	663-194P	1	PLATE, SEAT	25	F-1009-01	2	1/4" FLAT WASHER
2	663-197P	1	PLT, REAR SEAT FILLER	26	F-2062	2	1/2"x3/8 SHOULDER BOLT, SOCKET
3	707-047P	1	PLATE, ARM REST RH	27	F-1175	2	5/16-18 X 1 1/4", GR.5
4	707-070P	1	PLATE, ARM REST LH (JOYSTICK)	28	F-2120	8	FHCS, 5/16-18x3/4" GR5
-	707-048P	1	PLATE, ARM REST LH (TWINSTICK)	29	F-1125	20	5/16-18 STOVER NUT
5	H-2763	2	PAD, ARM REST	30	707-066P	1	SHELF, REAR, FUEL TANK
6	629-846A	1	FOOT DECK w/DECAL, CHARGER	31	707-045P	2	BAR, REINFORCEMENT, SEAT
7	707-043P	1	PIN, SEAT HINGE	32	H-2460	1	CABLE
8	620-051P	1	LIFT BAR	33	F-1521	4	1/2" WASHER
9	H-2755	1	SEAT	34	F-1538	1	1/4-20x3/4" CAPSCREW
10	663-081P	1	PLATE, LATCH SLIDE LONG	35	H-1635	1	3/4x4" EXTENSION SPRING
11	P-13044	1	SERIAL TAG	36	F-1005-01	1	1/4-20 STOVER NUT
12	F-1005-03	7	3/8-16 LOCK NUT	37	F-1858	1	1/4-20 "U" NUT
13	P-12473	1	SERIAL TAG LAMINATION DECAL	38	H-1926	1	HANDLE, GRIP
14	F-1486	1	3/8-16 JAM NUT	39	F-2061	1	1/2"x1 1/2" SHOULDER BOLT
15	F-2120	4	FHCS, 5/16-18x3/4" GR5	40	H2608	1	SPRING, ASSIST
16	F-1009-02	3	5/16 FLAT WASHER	41	F-1546	2	5/16-18x3/4" CAPSCREW
17	H-2764	1	HANDLE, JOYSTICK	42	H-2636	2	SPRING, CMPR, SEAT CHARGER
18	F-1394	1	3/8-16 X " GR. 5	43	659-137P	1	BATTERY HOLD DOWN
19	F-1015-15	2	5/16-18 x 1" CAPSCREW	44	F-1019-01	1	1/4" LOCK WASHER
20	707-046P	1	SPACER, SEAT PAN	45	663-205W	1	WLDT, BRAKE HANDLE
21	F-2125	1	FHCS, 3/8-16x1-1/4" GR5	46	P-12982	1	DECAL, CHARGER, CHROME
22	F-2063	4	5/16-18 NYLOC NUT, FLANGED	47	H-2461	3	RUBBER BUMPER
23	F-2121	6	FHCS 5/16-18x1" w/PATCH	48	H-1280	2	PLASTIC PLUG
24	F-1015-02	1	1/4-20 X 5/8", GR.5	*49	E-6580	1	SEAT SWITCH (NOT SHOWN)

FRONT STEP ASSEMBLY



REF NO.	PART NO.	QTY.	DESCRIPTION
1	663-134P	1	FRONT STEP
2	F-2142	2	FHCS, 3/8-16 X 4" GR.5
3	F-1005-03	4	3/8-16 LOCK NUT
4	659-241P	1	BRACKET, STEP MOUNT, RH
5	659-242P	1	BRACKET, STEP MOUNT, LH
6	H-2461	2	RUBBER BUMPER BUTTON
7	F-2124	2	FHCS, 3/8-16 X 3/4" GR.5

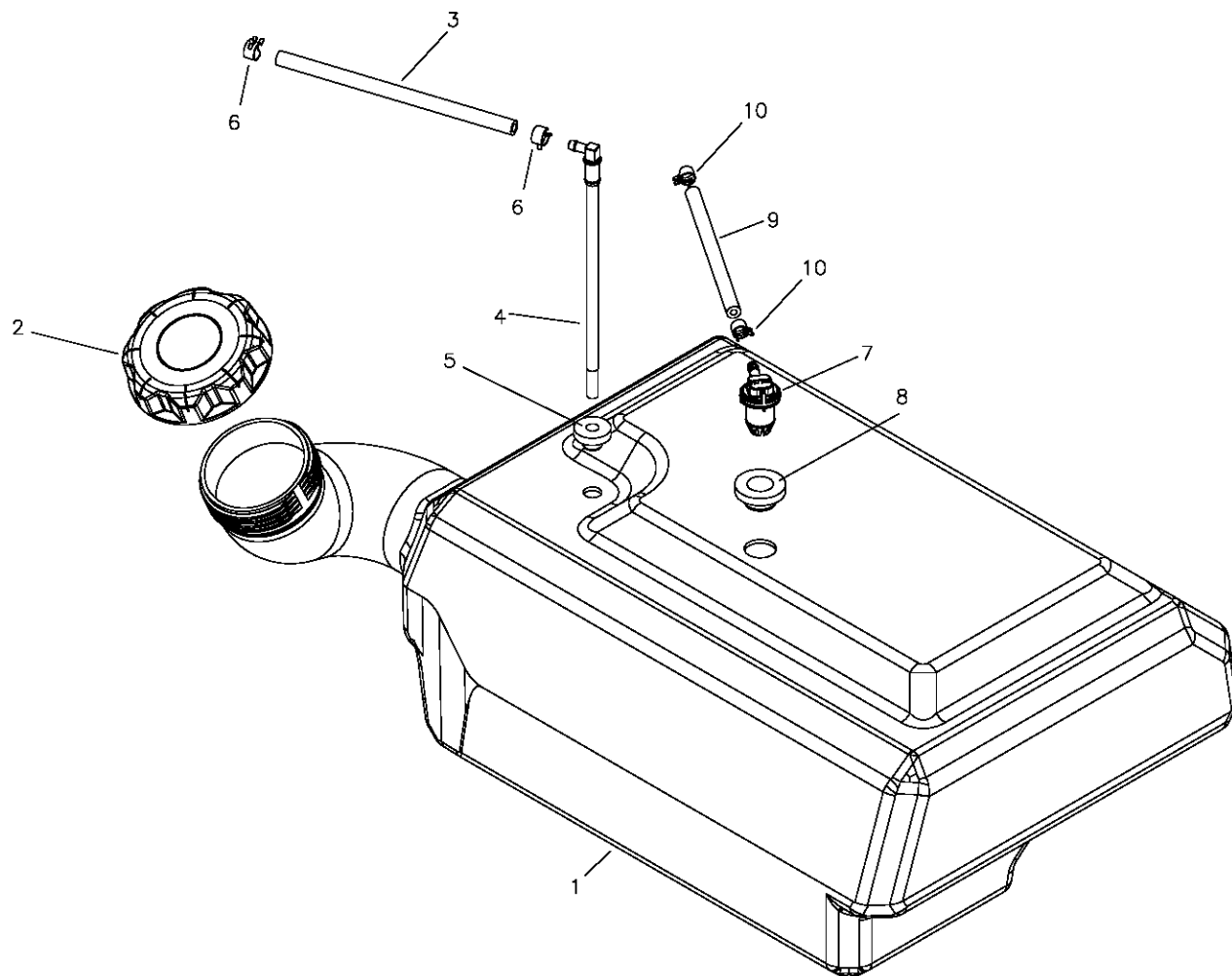
ROPS ASSEMBLY (H-2682) AND RELATED PARTS



REF NO.	PART NO.	QTY.	DESCRIPTION
1	F-2088	2	HHCS 1/2-13 x 1 1/4"
2	F-2089	2	FLAT WASHER 1/2"φ
3	F-2090	2	TOP LOCK NUT 1/2"φ
4	F-2093	2	PULL PIN-1/2 W/COTTER KEY
5	H-2701	2	SPRING
6	H-2700	2	POLYURETHANE CHANNEL
7	F-2091	4	HHCS 1/2-13 x 1 1/2"
8	F-2092	4	NLN 1/2-13 GR 8

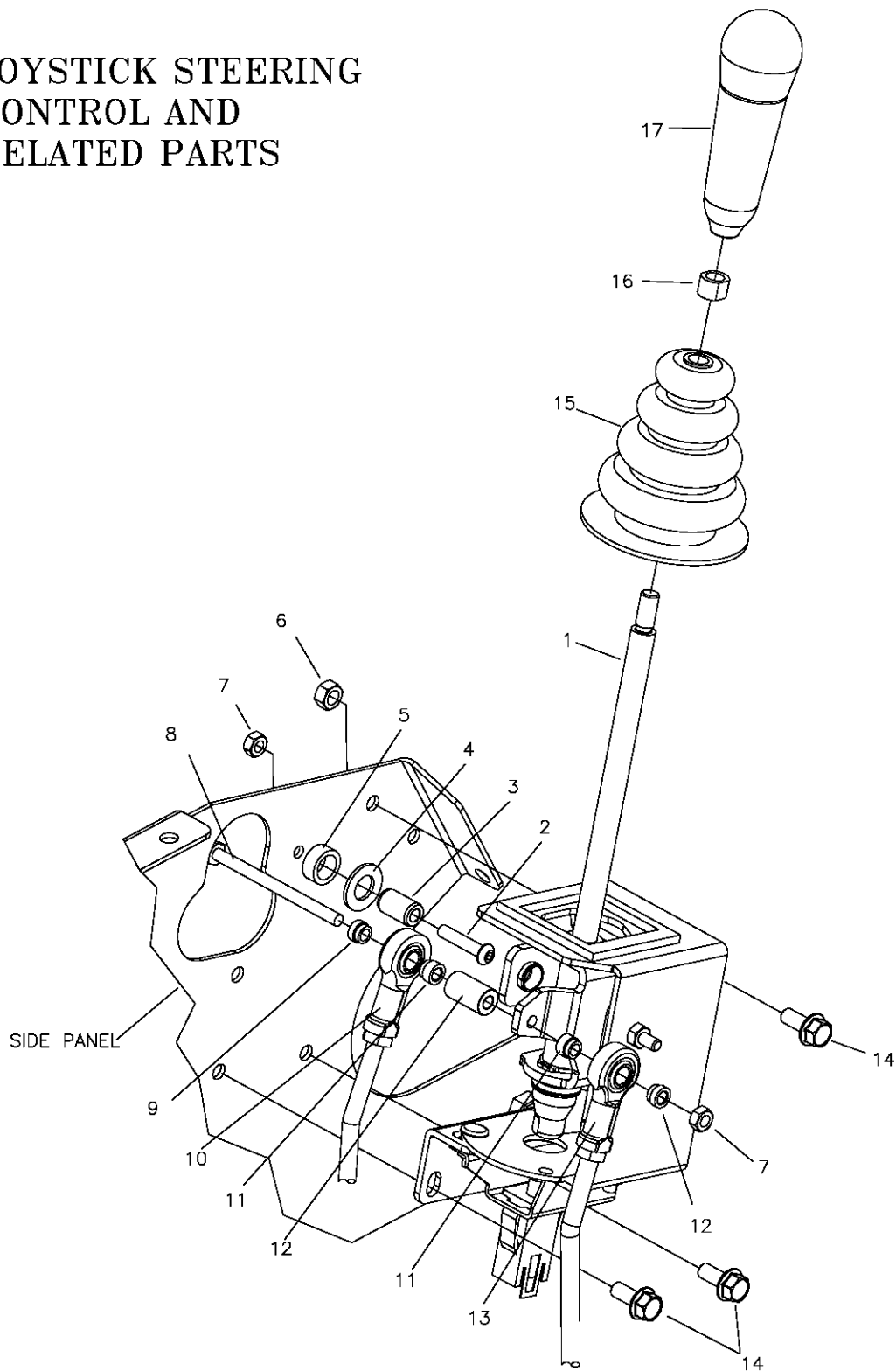
FUEL TANK ASSEMBLY H-2725

(INCLUDES ALL PARTS EXCEPT #2)



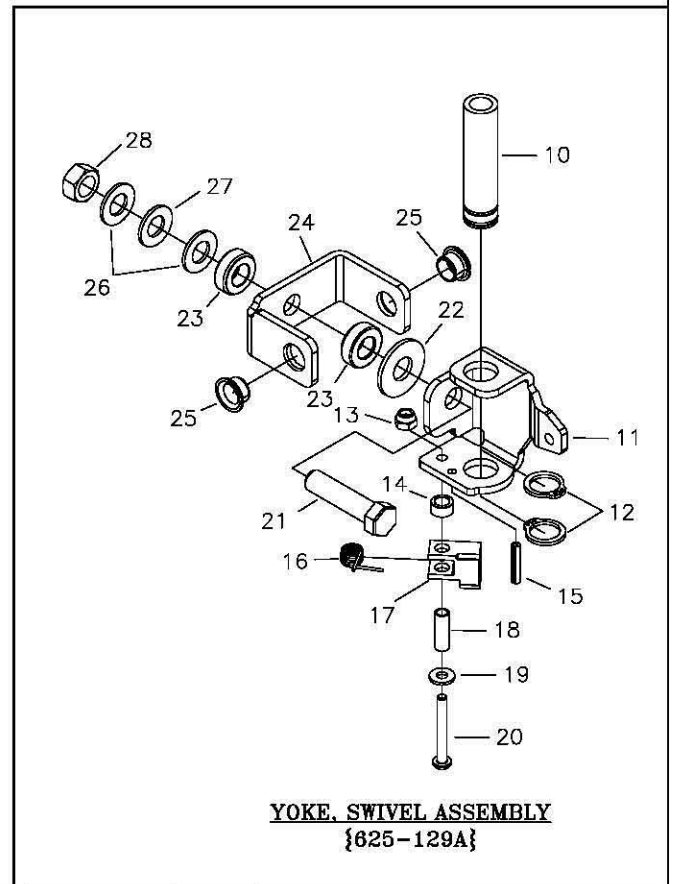
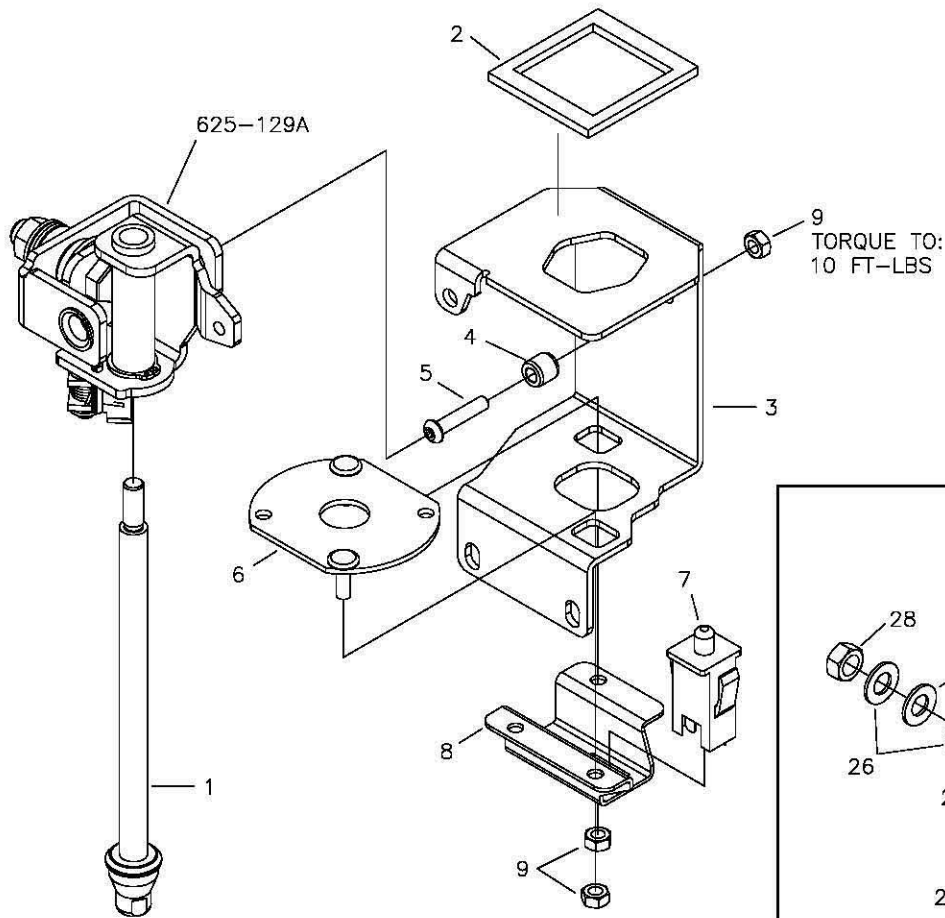
REF NO.	PART NO.	QTY.	DESCRIPTION
1	-----	-	8 GALLON TANK, VENTED
2	H-2743	1	GAS CAP, RATCHET
3	H-1648	4.0ft	FUEL LINE
4	H-2742	1	PICK UP TUBE
5	H-2741	1	GROMMET, PICK UP TUBE
6	H-1687	2	HOSE CLAMP, 1/2"
7	H-2678	1	REMOTE VENT
8	H-2679	1	REMOTE VENT GROMMET
9	H-2697	4.0ft	VENT LINE
10	H-2698	2	VENT LINE CLAMP

JOYSTICK STEERING CONTROL AND RELATED PARTS



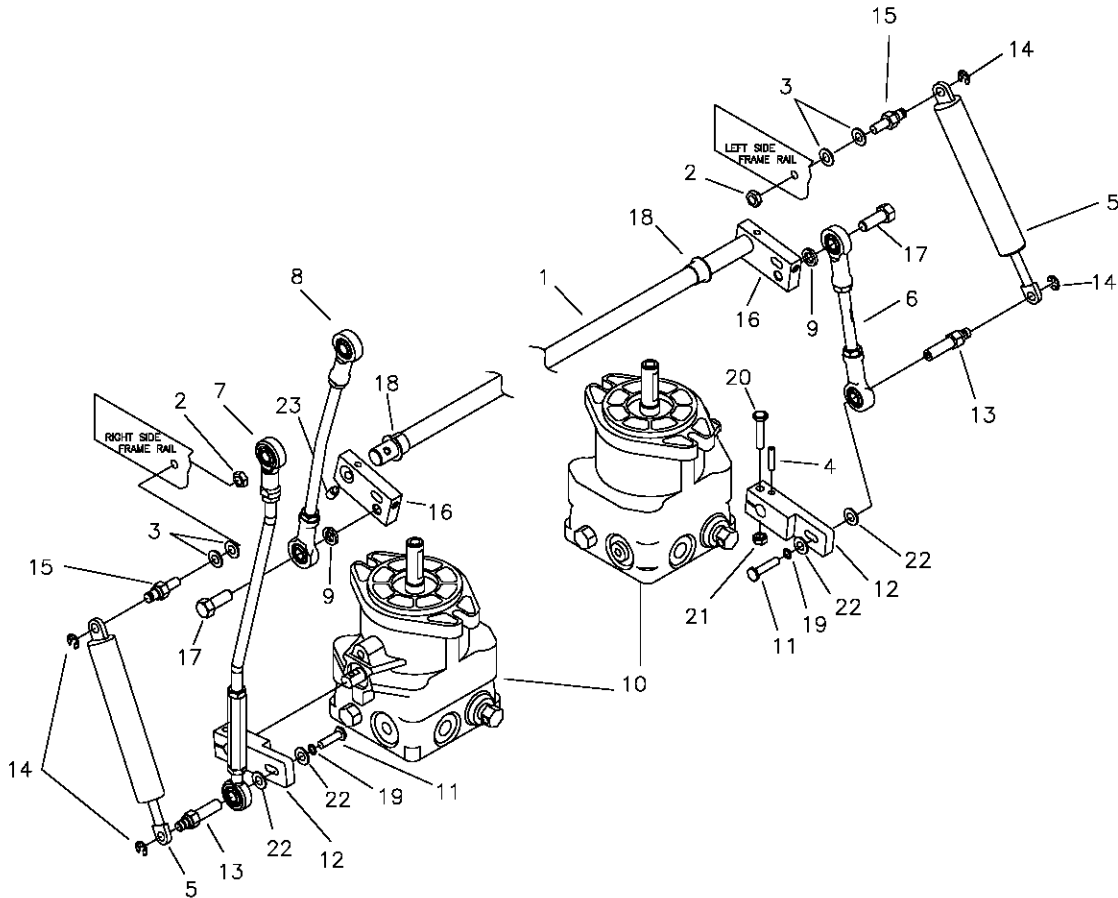
REF NO.	PART NO.	QTY.	DESCRIPTION	REF NO.	PART NO.	QTY.	DESCRIPTION
1	625-121A	1	JOYSTICK ASSEMBLY	10	707-082P	1	LINKAGE, INNER, JOYSTICK
2	F-2103	1	BUTTON SHCS, 1/4-20x1"	11	625-107P	1	BUSHING, .375 ROD END
3	625-119P	1	PIN, PIVOT, JS, LONG	12	625-100P	1	TUBE, PIVOT, JOYSTICK
4	F-1521	1	1/2" WASHER	13	707-083P	1	OUTER, LINKAGE, JOYSTICK
5	625-126P	1	SPACER, JOYSTICK PANEL	14	F-2120	3	FHCS, 5/16-18 x 3/4" GR5
6	F-1125	3	5/16-18 STOVER NUT	15	H-1991	1	BOOT
7	F-1005-01	1	1/4-20 LOCK NUT	16	H-2765	1	NUT, JOYSTICK
8	F-1020-01	1	1/4-20 x 3-1/2" CAPSCREW	17	H-2764	1	HANDLE, JOYSTICK
9	625-116P	1	BUSHING, .375 ROD END, SHORT				

JOYSTICK ASSEMBLY 625-121A



ITEM	PART #	QTY.	DESCRIPTION	ITEM	PART #	QTY.	DESCRIPTION
1	625-130A	1	ROD ASSEMBLY, SHORT	15	F-1503	1	3/16 x 1" SPIRAL PIN
2	H-1947	1	GASKET, FOAM, JOYSTICK	16	H-2710	1	SPRING, DETENT, JOYSTICK
3	625-095P	1	HOUSING, JOYSTICK	17	625-103P	1	TAB, CAM DETENT
4	625-106P	1	PIN, PIVOT, JOYSTICK	18	625-124P	1	TUBE-SPACER, DETENT CAM
5	F-2103	1	BUTTON SHCS, 1/4-20 x 1", CZ	19	F-2136	1	WASHER, FLAT, #12 PLAIN
6	625-127W	1	NEUTRAL PLATE, WLDT	20	F-2135	1	SCR, PANHD, PHLPS, #12-24x1-3/4"
7	E-6474	1	SWITCH, SNAP MOUNT	21	F-1293	1	1/2-13 x 2" CAPSCREW
8	659-285P	1	MOUNT, SWITCH	22	F-1009-05	1	1/2" FLAT WASHER
9	F-1005-01	3	1/4-20 LOCK NUT	23	D-3857	2	THRUST BEARING
10	625-099P	1	TUBE, GUIDE, CONTROL ROD	24	625-097P	1	PIVOT, JOYSTICK (PART OF 625-128A)
11	625-096P	1	YOKE, SWIVEL, JOYSTICK	25	D-3784	2	BUSHING, FLANGED (PART OF 625-128A)
12	H-2705	2	RING, DETENT, .75 EXT.	26	F-1521	2	1/2" WASHER, CUSTOM
13	F-2137	1	NUT, #12-24, NYLOCK	27	H-2704	1	SPRING, BELLEVILLE, .50x1x.073
14	625-125P	1	SPACER, CAM DETENT	28	F-1005-05	1	1/2-13 STOVER NUT

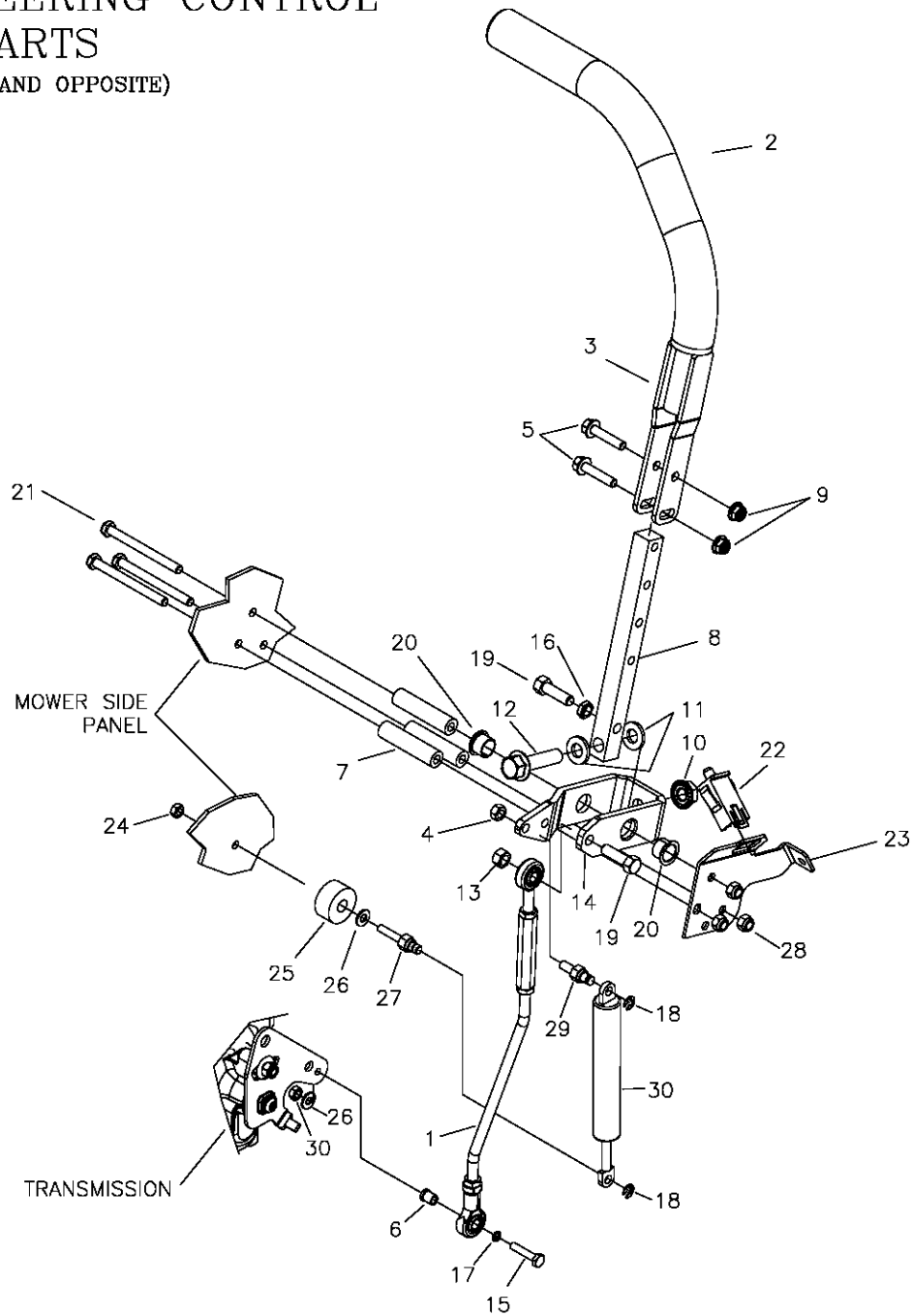
JOYSTICK STEERING CONTROL AND RELATED PARTS (CON'T)



REF NO.	PART NO.	QTY.	DESCRIPTION
1	700-055P	1	HYDRO SHIFT ROD
2	F-1125	2	5/16" STOVER NUT
3	F-1009-02	4	5/16" FLAT WASHER
4	F-1725	2	5MM x 26MM ROLL PIN
5	H-2467	2	DUAL ACTION DAMPER, LITE DUTY
6	H-2468	1	LINKAGE, JOYSTICK
7	707-083P	1	OUTER, LINKAGE, JS
8	707-082P	1	LINKAGE, INNER, JS
9	F-1019-03	2	3/8" LOCK WASHER
10	----	-	SEE PAGE 23
11	F-1015-05	2	1/4-20 X 1" BOLT GR 5
12	663-135P	2	LEVER, CONTROL
13	663-051P	2	DAMPNER BOLT, FEMALE
14	F-1610	4	E-RING
15	638-028P	4	5/16-18 X 3/4" DAMPNER BOLT
16	625-122A	2	SWIVEL ARM
17	F-1394	2	3/8-16 X 1" CAPSCREW
18	D-3730	2	BUSHING
19	F-1019-01	2	1/4" LOCK WASHER
20	F-1539	2	1/4-20 X 1 1/4" CAPSCREW
21	F-1158	2	1/4-20 STOVER NUT
22	F-1009-01	4	1/4" FLAT WASHER
23	F-2080	2	5/16-18 SETSCREW (EXT POINT)

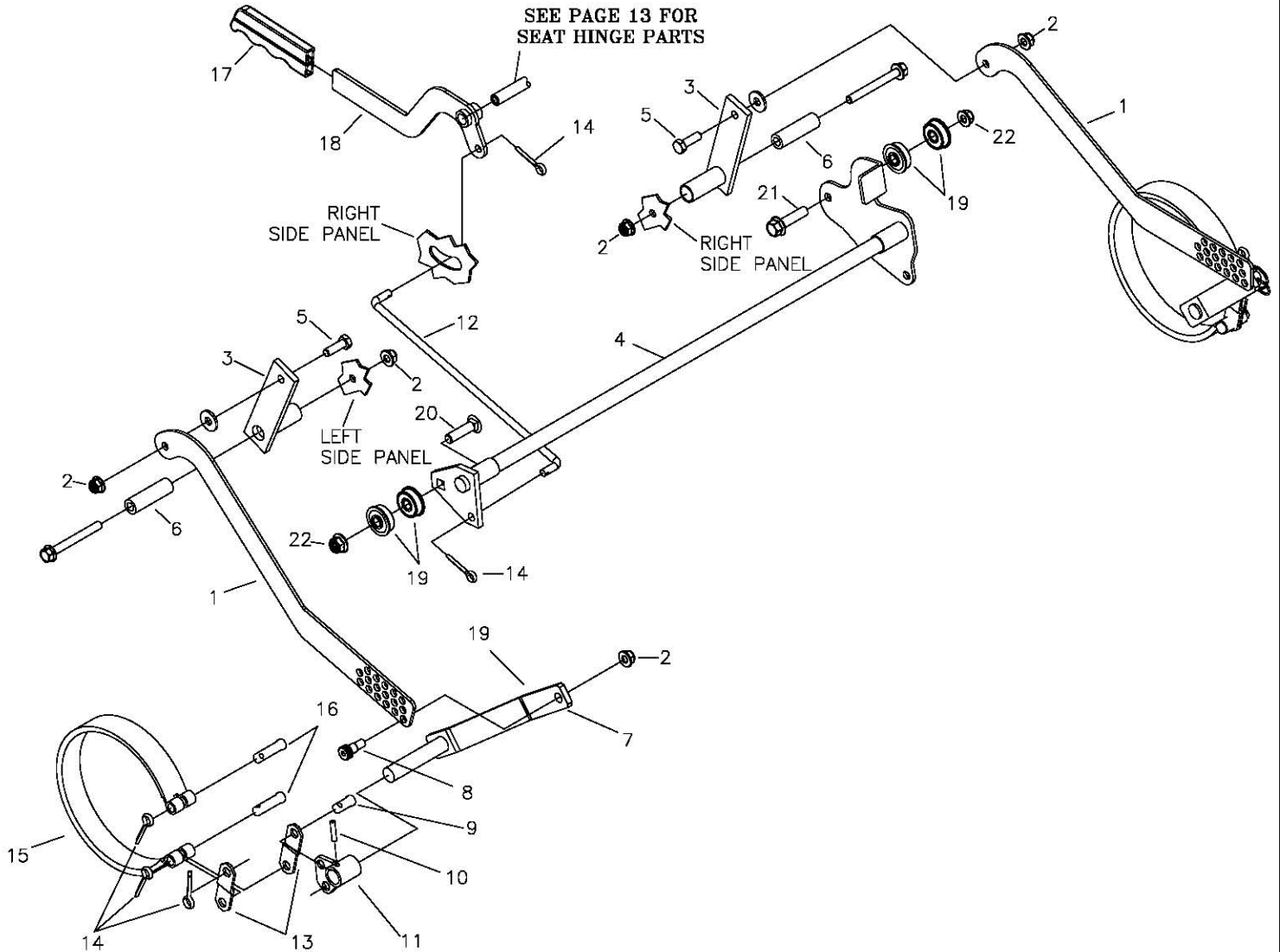
TWINSTICK STEERING CONTROL & RELATED PARTS

(RIGHTHAND SHOWN, LEFTHAND OPPOSITE)



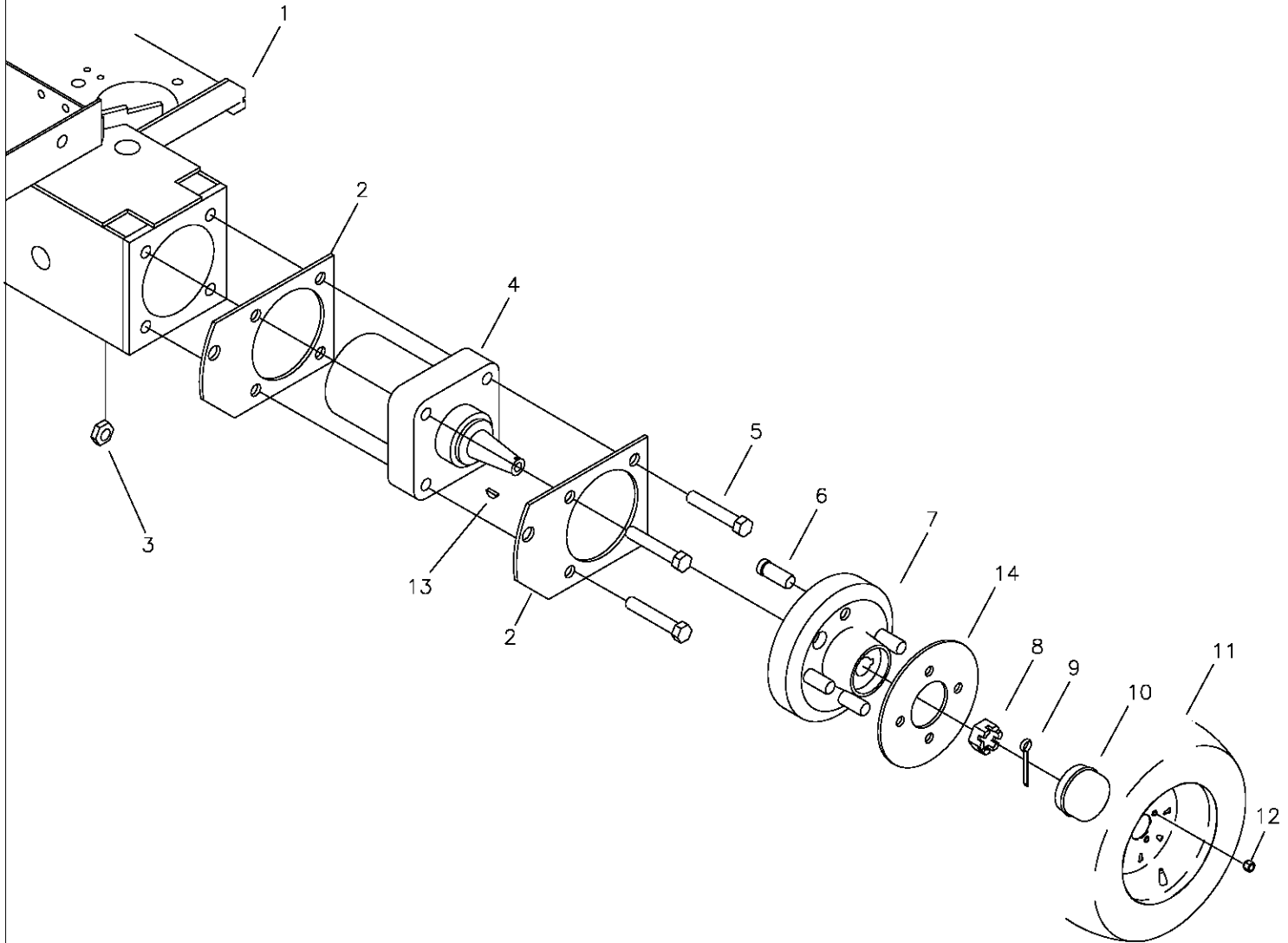
REF NO.	PART NO.	QTY.	DESCRIPTION	REF NO.	PART NO.	QTY.	DESCRIPTION
1	663-050P	1	LINK ROD ASSEMBLY	17	F-1019-01	4	1/4" LOCK WASHER
2	H-2739	1	GRIP, 15", CLOSED END	18	F-1610	2	E-RING FOR 1/4" SHAFT
3	659-364W	1	DUAL LEVER CONTROL	19	F-1307	2	3/8-16 X 1 1/4" CAPSCREW
4	F-1125	1	5/16 LOCK NUT	20	D-3730	2	FLANGED BUSHING 5/8" BORE
5	F-2129	2	FHCS, 5/16-18 X 1 1/2" w/PATCH	21	F-2058	3	5/16-18 x 3 1/2" CAPSCREW
6	H-2465	1	ADAPTER, ROD END, LONG	22	E-6474	1	SWITCH, SNAP MOUNT
7	659-252P	3	TUBE SPACER	23	647-242P	1	MOUNTING BRACKET (RH)
8	659-365P	1	LOWER SHIFT BLOCK	--	647-243P	1	MOUNTING BRACKET (LH)
9	F-2063	1	5/16-18 NYLOC NUT	24	F-1158	1	1/4-20 STOVER NUT
10	F-2060	2	1/2-13 NUT, FLANGE LOCK	25	F-2045	1	SPACER
11	606-151P	2	WASHER, NYLON 1/2 ID x 1/8"	26	F-1009-01	2	1/4" FLAT WASHER
12	F-2128	1	FHCS, 1/2-13 x 2" GR5	27	638-029P	1	DAMPER BOLT, 1/4-20
13	F-1005-03	1	3/8-16 STOVER NUT	28	F-1005-02	3	1/4-20 NYLOC NUT
14	659-243P	1	SHIFTING YOKE	29	638-028P	1	DAMPER BOLT, 5/16-18 X 3/4"
15	F-1539	1	1-4-20 x 1-1/4" CAPSCREW	30	H-2843	1	DUAL ACTION DAMPNER, 750N
16	F-1486	2	3/8-16 JAM NUT				

PARKING BRAKE ASSEMBLY & RELATED PARTS



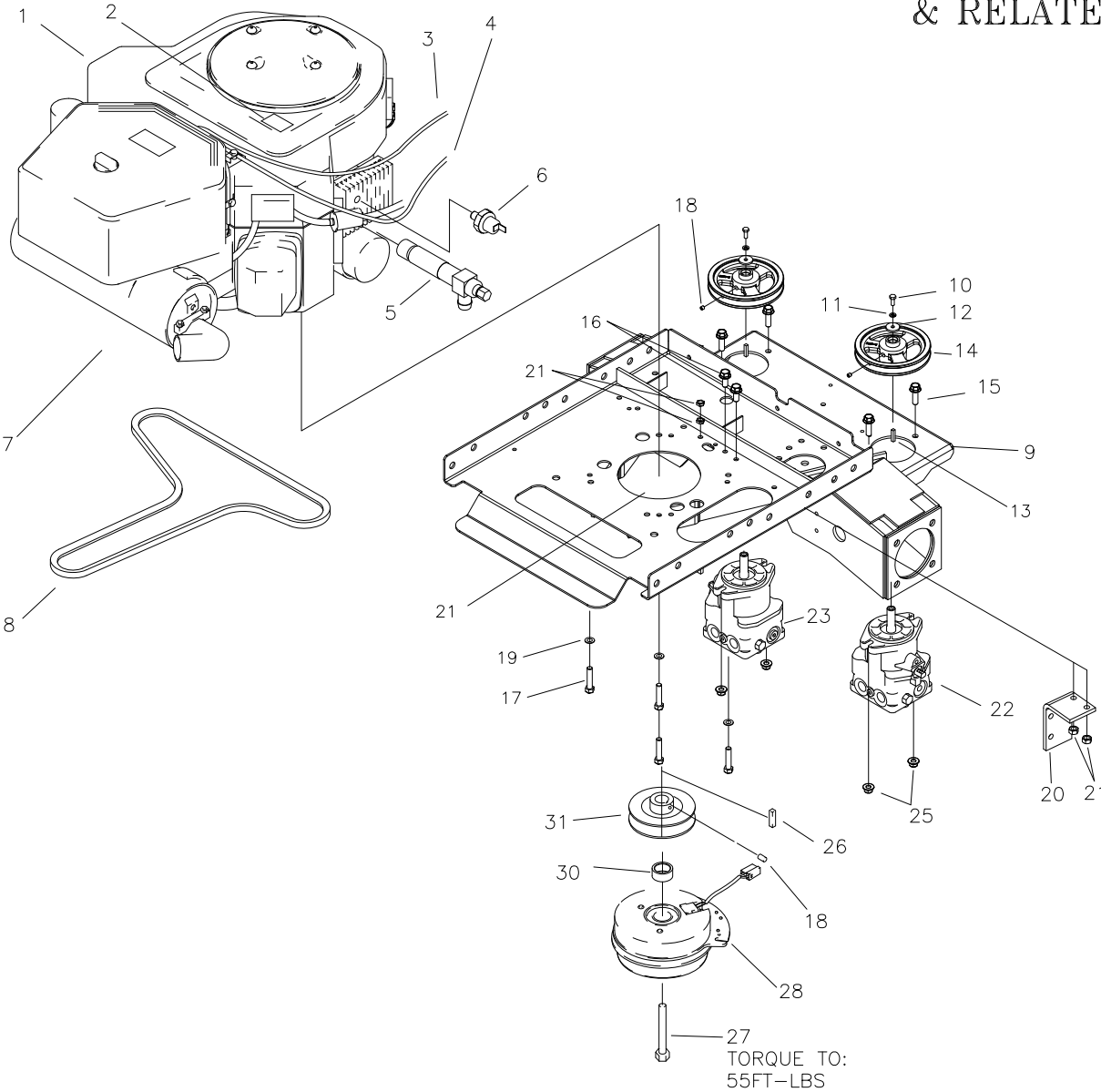
REF NO.	PART NO.	QTY.	DESCRIPTION	REF NO.	PART NO.	QTY.	DESCRIPTION
1	663-165P	2	LINK, ADJUSTABLE, BRAKE	12	663-122P	1	ROD, BRAKE LINK
2	F-2063	6	NUT, 1/2" FLANGED, NYLOC	13	647-010P	4	BRAKE ANCHOR LINK
3	663-166W	2	WLDT, CAM LEVER	14	F-1491	8	1/8 X 1" COTTER PIN
4	663-169W	1	BRAKE ROD WLDT	15	D-3668	2	BRAKE BAND 6" X 1" WIDE
5	F-1015-15	2	5/16-18 X 1" CAPSCREW	16	F-1444	4	3/8 X 1 5/16" CLEVIS PIN
6	663-172P	2	PIN, PIVOT	17	H-1926	1	GRIP HANDLE
7	663-150W	2	BRAKE ARM WLDT	18	663-205W	1	WLDT, BRAKE HANDLE
8	F-2173	2	SHOULDER BOLT, .37x.37, SOCKET	19	D-3911	4	3/8x1-1/8, FLG BALL BEARING
9	F-1438	2	3/8 X 3/4" CLEVIS PIN	20	F-1177	1	3/8-16 X 1-1/2" CARRIAGE BOLT
10	F-1855	2	ROLL PIN, 3/16 X 1" HVY. DUTY	21	F-2147	1	FHCS, 3/8-16 X 1-1/2", YZ, GR5
11	647-029W	1	SHORT BRAKE ARM (LH)	22	F-2151	2	NUT, 3/8", FLANGED, NYLOC
--	647-028W	1	SHORT BRAKE ARM (RH)				

GEAR MOTOR, WHEEL ASSEMBLY



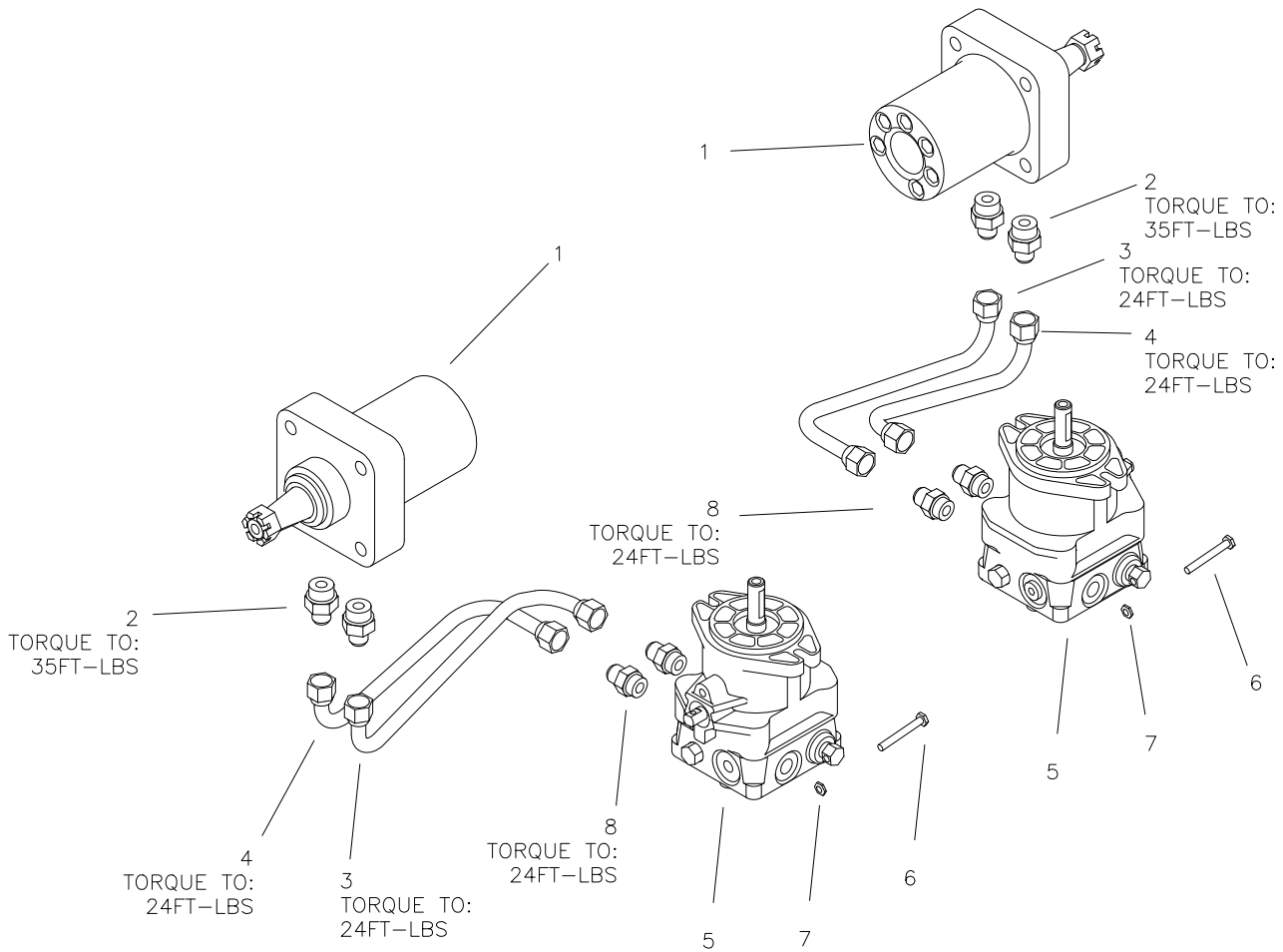
REF NO.	PART NO.	QTY.	DESCRIPTION
1	663-176W	1	MOTOR MOUNT
2	647-017P	4	BRAKE MOUNT
3	F-1005-05	8	1/2-13 STOVER NUT
4	D-3908	2	15.9 CIR PARKER WHEEL MOTOR
5	F-1668	8	1/2-13 X 2 3/4" BOLT GR. 5
6	F-1654	8	WHEEL STUD (REPLACEMENT)
7	663-207A	2	WHEEL HUB
8	F-1909	2	3/4-16 CASTLE NUT
9	F-1396	2	1/8 X 1 1/2" COTTER PIN
10	H-1798	1	GREASE CAP
11	D-3669	2	TIRE/WHEEL ASSEMBLY
12	F-1499	8	LUG NUT 1/2-20 X 60 DEG.
13	D-1004-01	2	1/4 X 1" WOODRUFF KEY
14	659-092P	2	WHEEL BACKING PLATE

MOTOR ASSEMBLY & RELATED PARTS



REF NO.	PART NO.	QTY.	DESCRIPTION	REF NO.	PART NO.	QTY.	DESCRIPTION
1	M-5384	1	25.5 HP. KAWASAKI ENGINE	16	F-2120	2	FHCS, 5/16-18 X 3/4" GR5
-	M-5335	1	27 HP. KOHLER ENGINE	17	F-2125	4	FHCS, 3/8-16x1-1/4", YZ, GR5 (KAWASAKI)
2	P-10077	1	DECAL, "CLEAN"	-	F-2040	4	HFCS, 3/8-16x1-1/2", THRD FORM (KOHLER)
3	H-2287	1	CHOKE CABLE (KAWASAKI)	18	F-1228	3	1/4-20 NYLOC SETSCREW
-	H-2404	1	CHOKE CABLE (KOHLER)	19	F-1019-03	4	3/8" LOCK WASHER
4	H-2610	1	THROTTLE CABLE	20	700-026P	1	CLUTCH STOP
5	H-2589	1	OIL DRAIN (KOHLER)	21	F-1125	4	5/16-18 LOCK NUT
-	H-2590	1	OIL DRAIN (KAWASAKI)	22	D-3907-01	1	PUMP, 12CC, RH
6	E-6307	1	OIL PRESSURE SWITCH (KAWASAKI)	23	D-3907-02	1	PUMP, 12CC LH
7	H-2578	1	MUFFLER ASSEMBLY (KAWASAKI)	24	F-1009-03	8	3/8" FLAT WASHER
8	D-3524	1	V-BELT A-71 KEVLAR	25	F-1005-03	4	3/8-16 STOVER NUT
9	663-176W	1	MOTOR MOUNT	26	621-113P	1	KEY, 1/4" SQ. X 1 1/4"
10	F-1737	2	6mm X 16mm BOLT GR. 5	27	F-2113	1	7/16-20x2-1/2" CAPSCREW, GR8
11	F-1738	2	6mm SPRING WASHER	28	E-6532	1	1 1/8" CLUTCH BRAKE
12	F-1736	2	WASHER, .840 X .246 X .125	29	647-085P	1	GROUND STRAP (KAWASAKI)
13	D-3541	2	KEY - 5mm x 20mm	30	F-2043	1	SPACER (KAWASAKI)
14	647-147P	2	HYDRO PUMP PULLEY	31	647-148P	1	MOTOR PULLEY
15	F-2125	4	FHCS, 3/8-16 X 1 1/4" GR5				

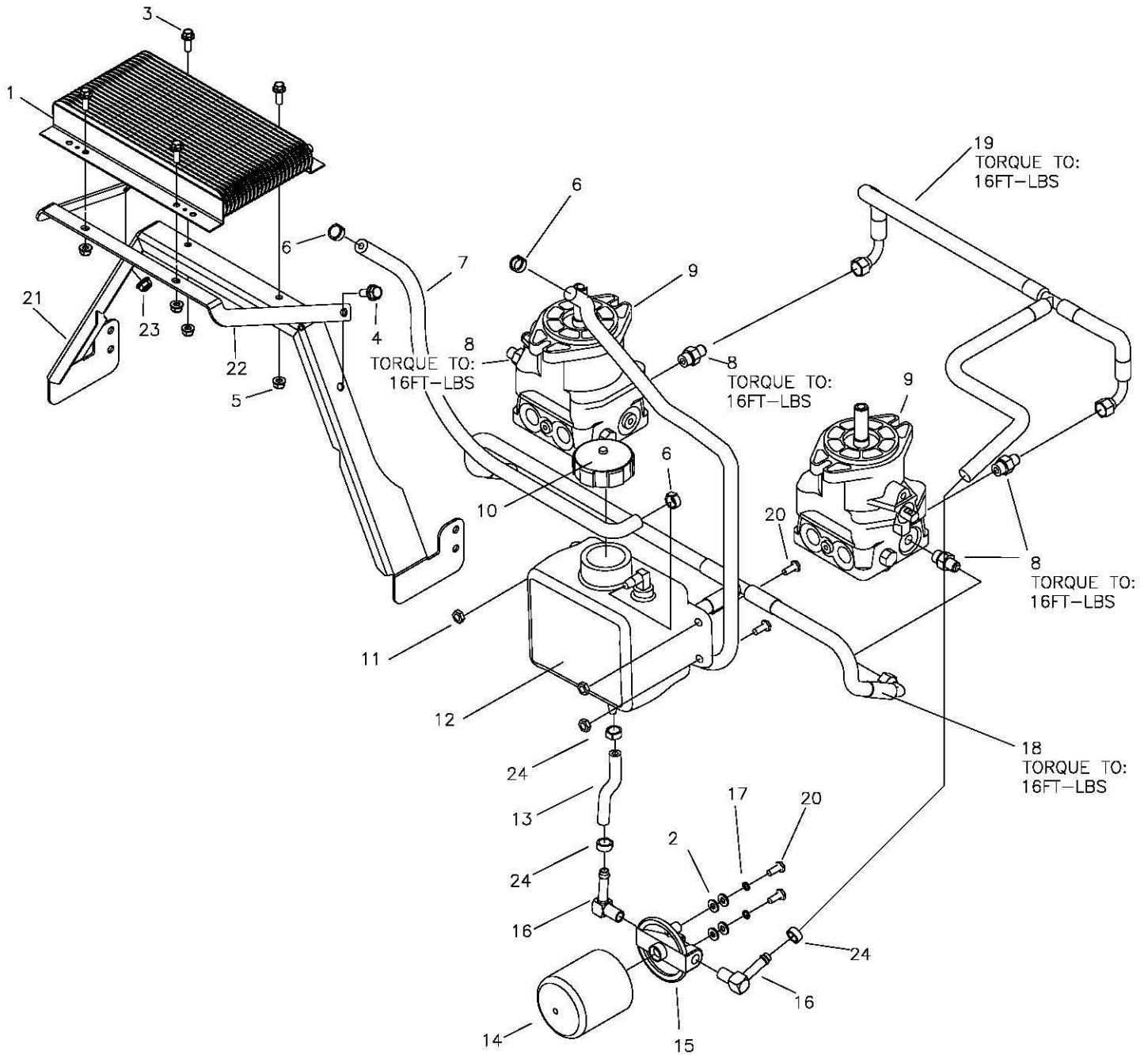
HIGH PRESSURE LINES & FITTINGS



VIEWED FROM FRONT RIGHT

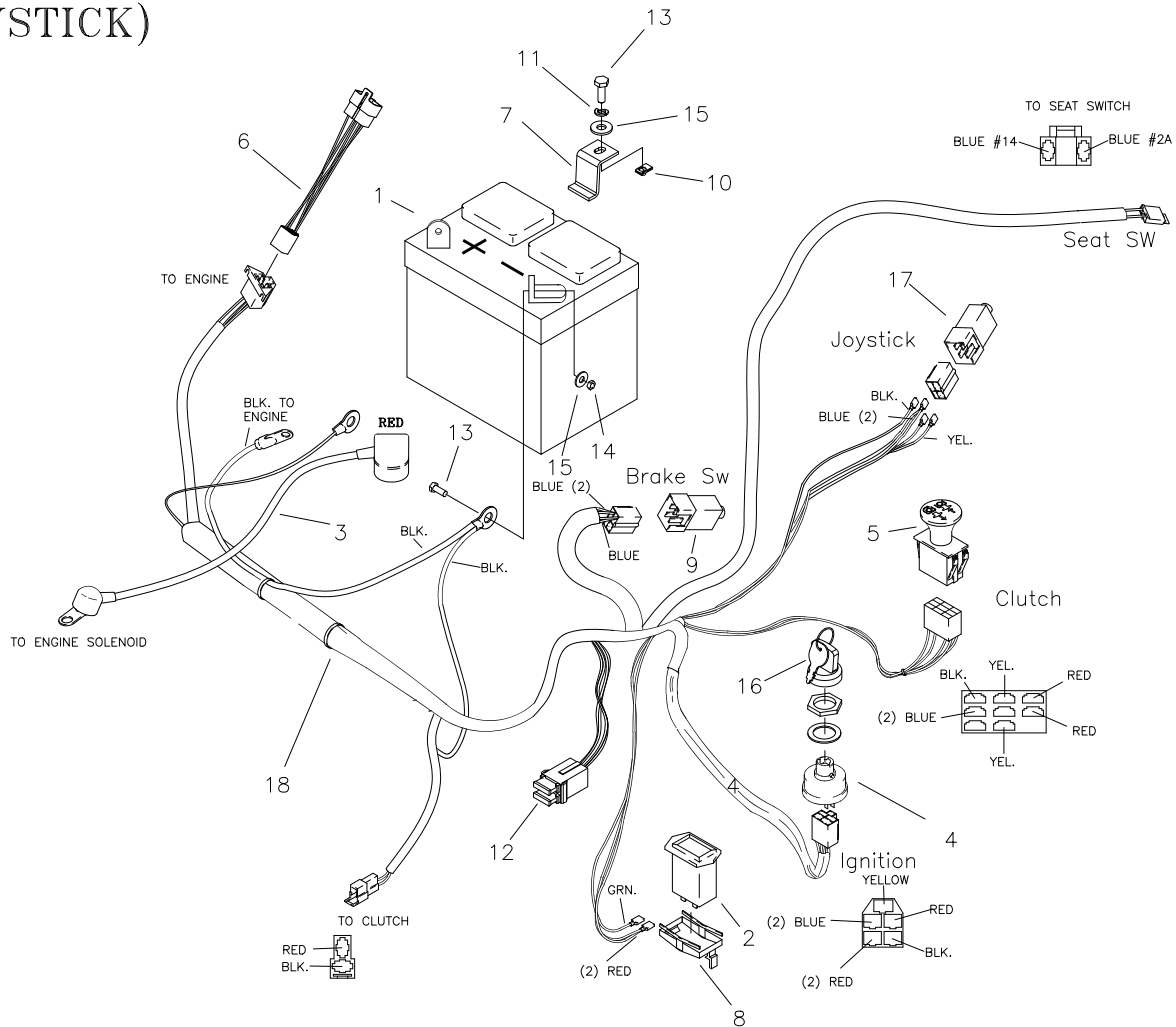
REF NO.	PART NO.	QTY.	DESCRIPTION
-	H-2846	1	CHARGER PLUMBING KIT (ASS'Y)
1	D-3908	2	WHEEL MOTOR PARKER "TE" SERIES
2	H-2319	4	FITTING, STRIGHT, 7/8-14
3	H-2491	2	TUBE ASS'Y, LH. FORWARD
4	H-2492	2	TUBE ASS'Y, LH. REVERSE
5	-----	-	SEE PAGE 23
6	F-1015-09	2	1/4-20 X 2" BOLT GR. 5
7	F-1158	2	1/4-20 STOVER NUT
8	H-2436	4	FITTING, STRAIGHT, 3/4" X 1/2"

OIL RETURN LINES & COOLER ASSEMBLY



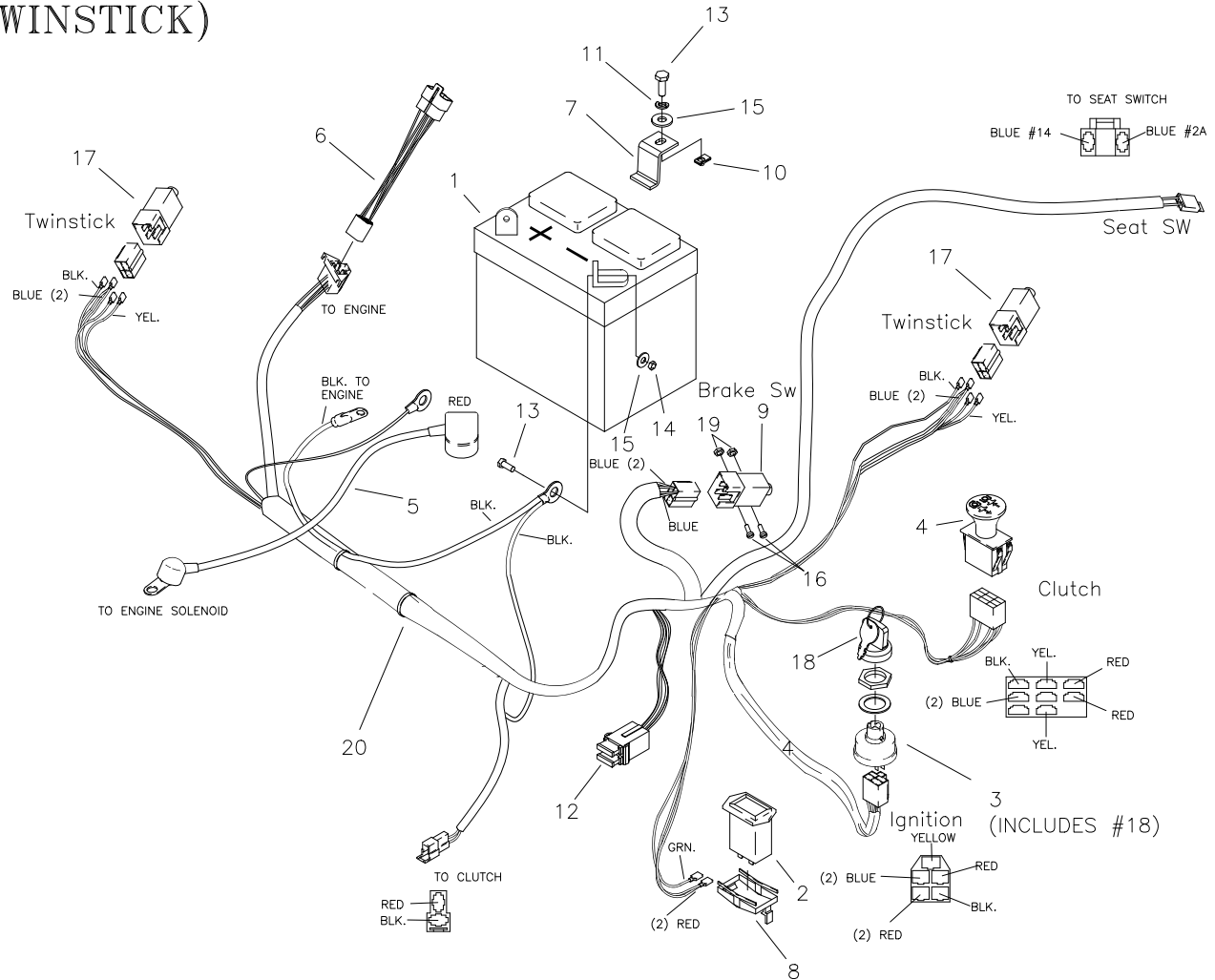
REF NO.	PART NO.	QTY.	DESCRIPTION	REF NO.	PART NO.	QTY.	DESCRIPTION
1	H-2853	1	OIL COOLER	13	H-2847	1	20" HOSE, 3/8 id. HI TEMP.
2	F-1009-01	8	1/4" WASHER	14	H-2859	1	OIL FILTER
3	F-2162	6	FHCS, 1/4-20x3/4", YZ, GR5	15	H-2858	1	FILTER BASE
4	F-2120	2	FHCS, 5/16-18x3/4", YZ, GR5	16	H-2860	1	HOSE BARB 90 DEG. ELBOW
5	F-2132	4	NUT, 1/4-20, FLANGED NYLOC	17	F-1019-01	2	1/4" LOCK WASHER
6	H-2282	3	HOSE CLAMP	18	H-2849	1	RETURN HOSE TEE ASSEMBLY
7	H-2438	1	24" HOSE, 3/8" ID. HI TEMP.	19	H-2848	1	SUCTION HOSE TEE ASSEMBLY
8	H-2330	4	9/16" ADAPTER	20	F-1015-15	4	5/16-18 x 1" CAPSCREW
9	-----	-	SEE PAGE 23	21	663-202P	1	BRACKET, COOLER
10	H-2120	1	VENT CAP	22	663-203P	1	BRACE, COOLER
11	F-1125	2	5/16-18 STOVER NUT	23	F-2063	2	NUT, 5/16-18, FLANGED NYLOC
12	H-2805	1	OIL TANK	24	H-2535	3	7/8" CLAMP

E-6415 WIRE HARNESS & RELATED PARTS (JOYSTICK)



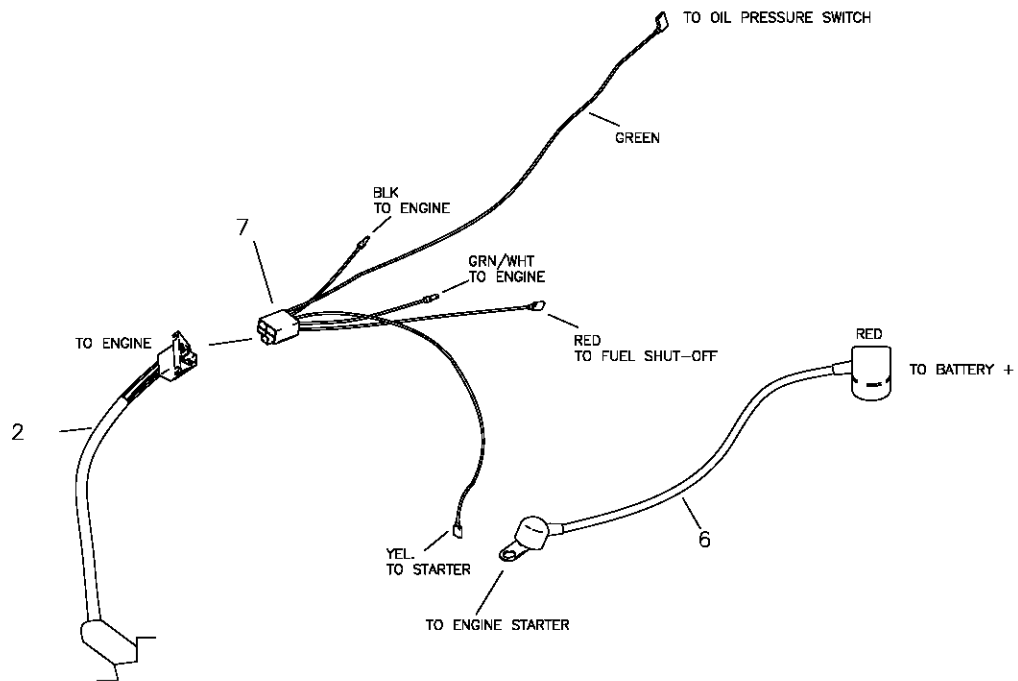
REF NO.	PART NO.	QTY.	DESCRIPTION
-	-----	1	WIRE HARNESS (JOYSTICK)
1	E-6271	1	BATTERY
2	E-5878	1	HOUR METER
3	E-6418	1	CABLE, BATTERY TO SOLENOID
4	E-5873	1	START SWITCH
5	E-6403	1	CLUTCH SWITCH
6	E-6417	1	WIRE HARNESS ADAPTER, KAWASAKI
7	659-137P	1	BATTERY HOLD DOWN
8	E-6369	1	RETAINER CLIP
9	E-6297	2	BRAKE SWITCH
10	F-1858	1	1/4-20 U-NUT
11	F-1019-01	1	1/4" LOCK WASHER
12	E-6207	2	FUSE, #ATC-30
13	F-1538	3	1/4-20 X 3/4" GR. 5
14	F-1158	2	1/4-20 LOCK NUT
15	F-1009-01	5	1/4" FLAT WASHER
16	E-6445	1	KEY, SET
17	E-6474	1	JOYSTICK SWITCH
18	E-6415	1	WIRE HARNESS
*	E-6580	1	SEAT SWITCH (NOT SHOWN)

E-6416 WIRE HARNESS & RELATED PARTS (TWINSTICK)



REF NO.	PART NO.	QTY.	DESCRIPTION
1	E-6271	1	BATTERY
2	E-5878	1	HOUR METER
3	E-5873	1	START SWITCH
4	E-6403	1	CLUTCH SWITCH
5	E-6418	1	CABLE, BATTERY TO SOLENOID
6	E-6417	1	WIRE HARNESS ADAPTER (KAWASAKI)
7	659-137P	1	BATTERY HOLD DOWN
8	E-6369	1	RETAINER CLIP
9	E-6297	1	BRAKE SWITCH
10	F-1858	1	1/4-20 U-NUT
11	F-1019-01	1	1/4" LOCK WASHER
12	E-6207	2	FUSE, #ATC-30
13	F-1538	3	1/4-20 X 3/4" GR. 5
14	F-1158	2	1/4-20 LOCK NUT
15	F-1009-01	5	1/4" FLAT WASHER
16	F-1022-26	2	SCREW, PHILLIPS, 10-32 X 5/8
17	E-6474	2	SWITCH, SNAP MOUNT
18	E-6445	1	KEY, SET
19	F-1448	2	LOCKNUT, 10-32 NYLOC
20	E-6416	1	WIRE HARNESS

E-6417 KAWASAKI ADAPTER HARNESS & RELATED PARTS



REF NO.	PART NO.	QTY.	DESCRIPTION
1	-----	1	KAWASAKI HARNESS ADAPTER
2	E-6415	1	WIRE HARNESS (JOYSTICK)
-	E-6416	1	WIRE HARNESS (TWINSTICK)
6	E-6418	1	CABLE, BATTERY TO SOLENOID

