

REPAIR PARTS MANUAL

**COUNTRY**  
**CLIPPER**®

**EDGE**

**EDGE<sup>XLT</sup>**

**SR400**

# COUNTRY CLIPPER

# EDGE & EDGE XLT

## ZERO TURN RADIUS MOWER

### TABLE OF CONTENTS

#### SECTION 1 – MOWER DECKS AND RELATED PARTS

1. 48" DECK ASSEMBLY
2. 52" DECK ASSEMBLY
3. 60" DECK ASSEMBLY
4. DECK SPINDLE ASSEMBLY
5. DOUBLE IDLER & RELATED PARTS
6. LIFT HANDLE ASSEMBLY & RELATED PARTS
7. LIFT ASSEMBLY & RELATED PARTS
8. TRANSMISSION IDLERS & RELATED PARTS

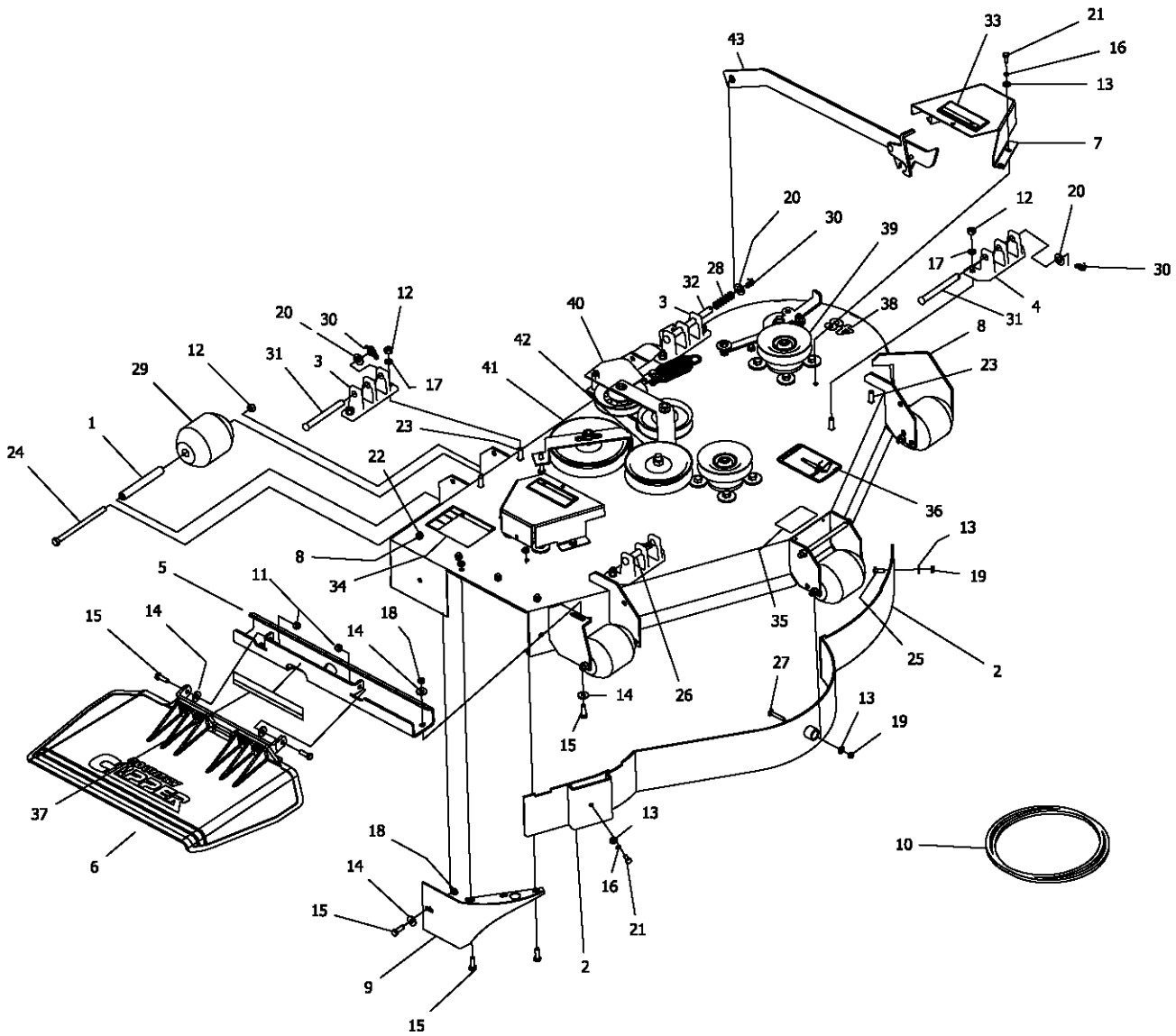
#### SECTION 2 – TRACTOR FRAME AND RELATED PARTS

9. CASTER WHEEL ASSEMBLY
10. FRAME SIDES & RELATED PARTS - EDGE
11. FRAME SIDES & RELATED PARTS - EDGE XLT
12. FENDER ASSEMBLY
13. SEAT, FOOT DECK ASSEMBLY & RELATED PARTS
14. FRONT STEP ASSEMBLY - EDGE XLT

#### SECTION 3 – TRACTOR DRIVE AND RELATED PARTS

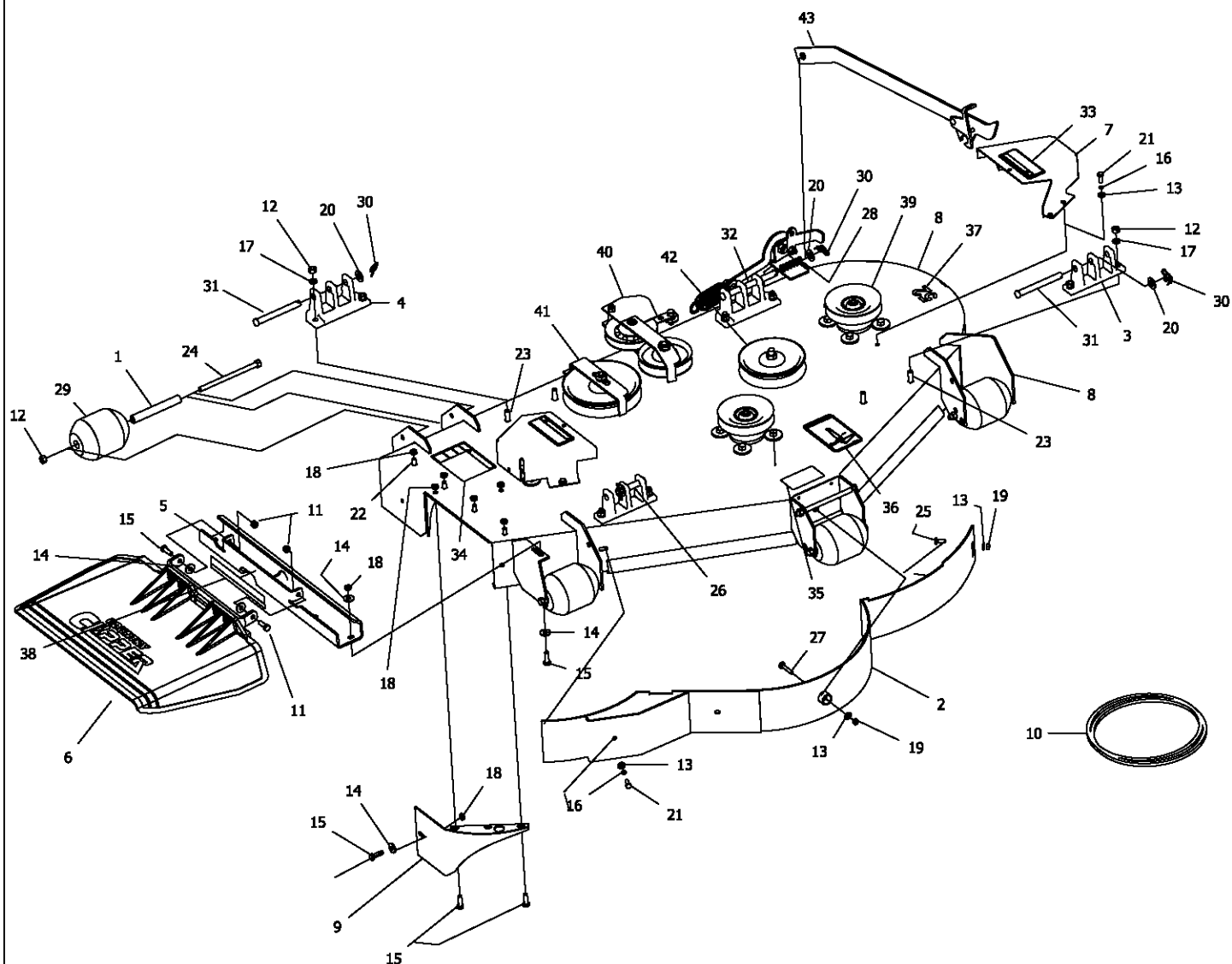
15. FUEL TANK ASSEMBLY
16. JOYSTICK STEERING CONTROL & RELATED PARTS
17. JOYSTICK STEERING CONTROL & RELATED PARTS (CONT)
18. TWIN STICK STEERING CONTROL & RELATED PART
19. PARKING BRAKE ASSEMBLY & RELATED PARTS
20. MOTOR & TRANSMISSION ASS'Y & RELATED PARTS - 21.5HP KAWASAKI
21. MOTOR & TRANSMISSION ASS'Y & RELATED PARTS - 24HP KAWASAKI
22. MOTOR & TRANSMISSION ASS'Y & RELATED PARTS - 27HP KOHLER
23. E-6405 WIRE HARNESS ASS'Y & RELATED PARTS - KOHLER ENGINE (JOYSTICK)
24. E-6415 WIRE HARNESS ASS'Y & RELATED PARTS - KAWASAKI ENGINES (JOYSTICK)
25. E-6416 WIRE HARNESS ASS'Y & RELATED PARTS - KOHLER & KAWASAKI ENGINES (TWINSTICK)
26. E-6417 WIRE HARNESS ADAPTER & RELATED PARTS - KAWASAKI

# 48" DECK ASSEMBLY



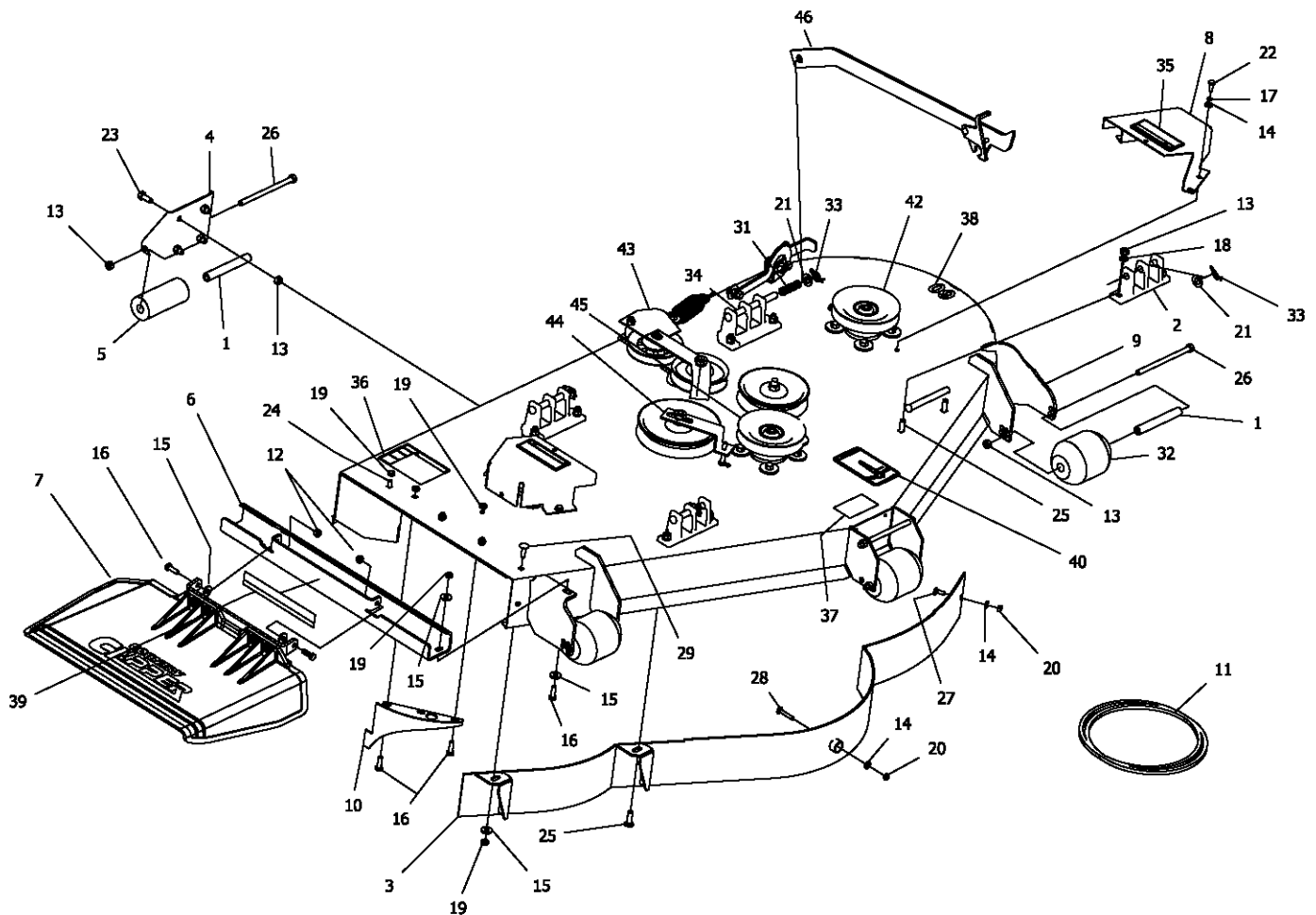
REF NO.	PART NO.	QTY.	DESCRIPTION	REF NO.	PART NO.	QTY.	DESCRIPTION
1	609-183P	5	BUSHING	23	F-1672	8	3/8-16 x 1-1/4" Carriage Bolt
2	629-241W	1	Baffle Wldt. 48"	24	F-1741	6	3/8-16 x 6" Capscrew
3	643-016W	2	Hanger Weldment	25	F-1823	1	Carriage Bolt, 1/4 X 3/4"
4	651-009W	2	CASTING, HANGER, WIDE BASE	26	F-1898	1	1/2 x 2-3/4" Clevis Pin
5	660-120P	1	OUTLET STIFFENER, SMALL	27	F-1935	1	CARRIAGE BOLT, 1/4 X 1-1/2"
6	643-111A	1	CHUTE ASS'Y, SM.	28	F-2575	1	SPRING, COMP .656 X .052 X 1.97
7	660-146A	2	PULLEY COVER w/DECALS	29	H-1948	5	Roller, 3-3/4 DIA. x 4-13/16L
8	660-143A	1	48" DECK w/DECALS	30	H-2239	4	1/2" Rue Ring
9	686-080W	1	SPLITTER BAFFLE	31	H-2240	2	1/2" x 4-1/2" Clevis Pin
10	D-3775-W	1	BELT, B-158	32	H-2718	1	1/2" x 5-1/2" Clevis Pin
11	F-1005-02	2	5/16-18 Nyloc Nut	33	P-10935	2	Decal, WARNING
12	F-1005-03	22	3/8-16 Stover Nut	34	P-10941	1	DECAL "DANGER ROTATING BLADES"
13	F-1009-01	7	1/4" Flat Washer	35	P-11413	1	DECAL, HOIST POINT
14	F-1009-02	5	5/16" Flat Washer	36	P-11932	1	DECAL, JAZEE DECK BELT ROUTING
15	F-1015-15	6	5/16-18 x 1" Capscrew	37	P-12496	1	DECAL, MISSING CHUTE
16	F-1019-01	5	1/4" LockWasher	38	P-12496	1	DECAL, DECK SIZE 48"
17	F-1019-03	20	3/8" LOCKWASHER	39	-----	3	SPINDEL ASS'Y - SEE PAGE 4
18	F-1125	9	5/16-18 Stover Nut	40	-----	1	DOUBLE IDLER ASS'Y - SEE PAGE 5
19	F-1158	2	1/4-20 Stover Nut	41	-----	1	FRONT IDLER ASS'Y - SEE PAGE 5
20	F-1521	9	1/2" WASHER, CUSTOM	42	-----	1	REAR IDLER ASS'Y - SEE PAGE 5
21	F-1538	5	1/4-20 x 3/4" Capscrew	43	625-114A	1	DECK PROP ASS'Y, PIVOT FRONT (EDGE XLT)
22	F-1671	4	5/16-18 x 3/4" CARRIAGE BOLT	43	625-115A	1	DECK PROP ASS'Y, FIXED FRONT (EDGE)

# 52" DECK ASSEMBLY



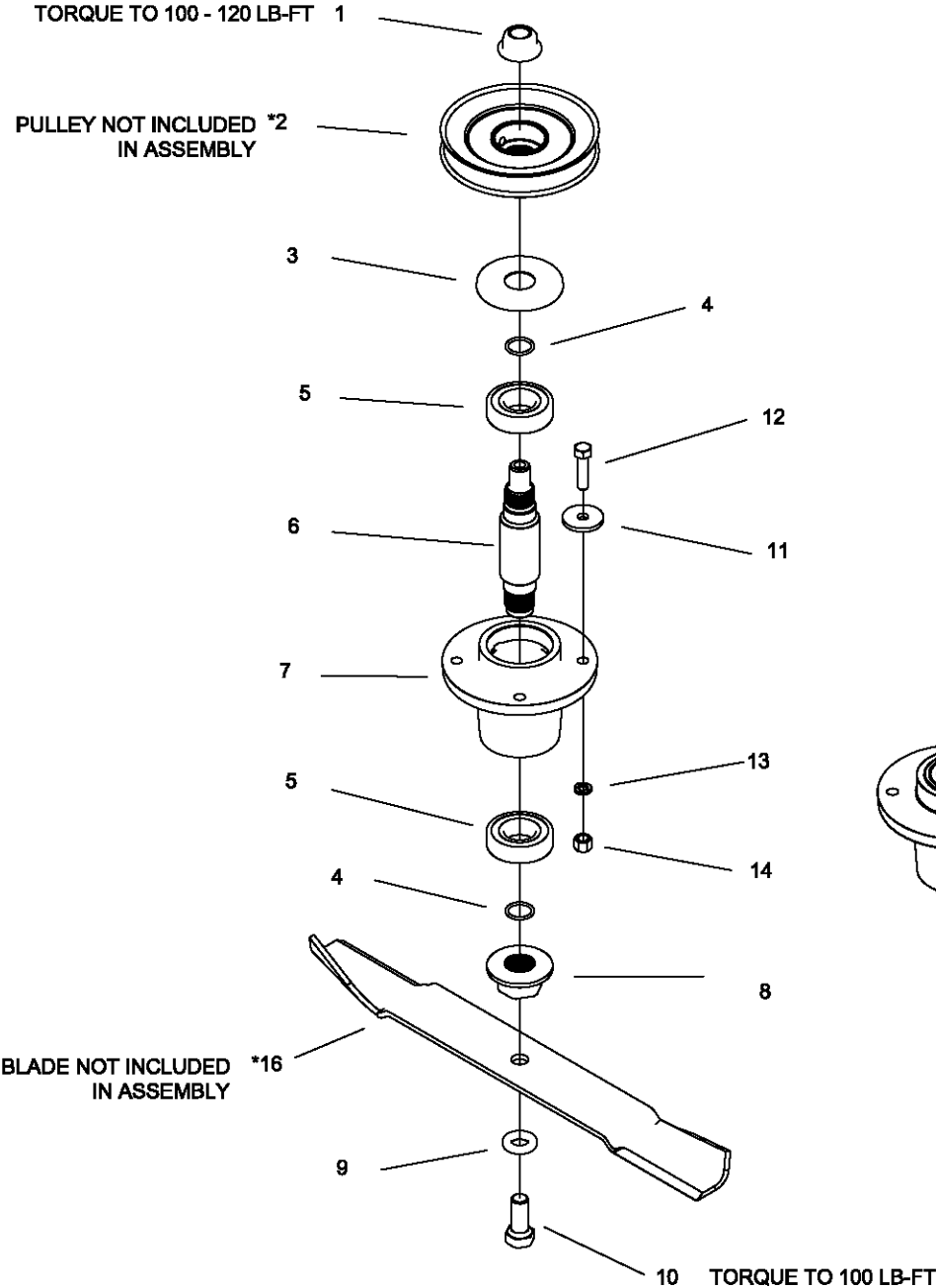
REF NO.	PART NO.	QTY.	DESCRIPTION	REF NO.	PART NO.	QTY.	DESCRIPTION
1	609-183P	5	BUSHING	23	F-1672	8	3/8-16 x 1-1/4" Carriage Bolt
2	629-229W	1	DUST BAFFLE, 52"	24	F-1741	6	3/8-16 x 6" Capscrew
3	643-016W	2	Hanger Weldment	25	F-1823	1	Carriage Bolt, 1/4 X 3/4"
4	651-009W	2	CASTING, HANGER, WIDE BASE	26	F-1889	1	1/2 x 2-5/8" Clevis Pin
5	660-120P	1	OUTLET STIFFENER, SMALL	27	F-1935	1	CARRIAGE BOLT, 1/4 X 1-1/2"
6	643-111A	1	CHUTE ASS'Y, SM.	28	F-2575	1	SPRING, COMP .656 X .052 X 1.97
7	660-146A	2	PULLEY COVER w/DECALS	29	H-1948	5	Roller, 3-3/4 DIA. x 4-13/16L
8	660-144A	1	52" DECK W/DECALS	30	H-2239	4	1/2" Rue Ring
9	686-080W	1	SPLITTER BAFFLE	31	H-2240	2	1/2" x 4-1/2" Clevis Pin
10	D-3776-W	1	BELT, B-180	32	H-2718	1	1/2" x 5-1/2" Clevis Pin
11	F-1005-02	2	5/16-18 Nyloc Nut	33	P-10935	2	Decal, WARNING
12	F-1005-03	23	3/8-16 Stover Nut	34	P-10941	1	DECAL "DANGER ROTATING BLADES"
13	F-1009-01	7	1/4" Flat Washer	35	P-11413	1	DECAL, HOIST POINT
14	F-1009-02	5	5/16" Flat Washer	36	P-11932	1	DECAL, JAZEE DECK BELT ROUTING
15	F-1015-15	6	5/16-18 x 1" Capscrew	37	P-11951	1	DECAL, DECK SIZE, 52
16	F-1019-01	5	1/4" LockWasher	38	P-12496	1	DECAL, MISSING CHUTE
17	F-1019-03	20	3/8" LOCKWASHER	39	-----	3	SPINDEL ASS'Y - SEE PAGE 4
18	F-1125	8	5/16-18 Stover Nut	40	-----	1	DOUBLE IDLER ASS'Y - SEE PAGE 5
19	F-1158	3	1/4-20 Stover Nut	41	-----	1	FRONT IDLER ASS'Y - SEE PAGE 5
20	F-1521	6	1/2" WASHER, CUSTOM	42	-----	1	REAR IDLER ASS'Y - SEE PAGE 5
21	F-1538	5	1/4-20 x 3/4" Capscrew	43	625-114A	1	DECK PROP ASS'Y, PIVOT FRONT (JAZEE PRO SR375)
22	F-1671	4	5/16-18 x 3/4" CARRIAGE BOLT	-----	625-115A	1	DECK PROP ASS'Y, FIXED FRONT (JAZEE SR225)

# 60" DECK ASSEMBLY



REF NO.	PART NO.	QTY.	DESCRIPTION	REF NO.	PART NO.	QTY.	DESCRIPTION
1	609-183P	5	BUSHING	24	F-1671	3	5/16-18 x 3/4" CARRIAGE BOLT
2	643-016W	2	Hanger Weldment	25	F-1672	8	3/8-16 x 1-1/4" Carriage Bolt
3	643-104W	1	60" DUST BAFFLE	26	F-1741	6	3/8-16 x 6" Capscrew
4	659-139P	2	SCALPER BRACKET	27	F-1823	1	Carriage Bolt, 1/4 X 3/4"
5	660-076P	2	ROLLER	28	F-1935	1	CARRIAGE BOLT, 1/4 X 1-1/2"
6	660-123P	1	OUTLET STIFFENER, LARGE	29	F-2066	1	5/16-18 x 1" CARRIAGE BOLT,
7	643-111A	1	CHUTE ASSEMBLY, SM	30	F-2106	1	1/2-13 X 3-1/2" CARRIAGE BOLT
8	660-146A	2	PULLEY COVER w/DECALS	31	F-2575	1	SPRING, COMP .656 X .052 X 1.97
9	660-145A	1	60" LITE DECK WELDMENT	32	H-1948	3	Roller, 3-3/4 DIA. x 4-13/16L
10	686-006W	1	SPLITTER BAFFLE	33	H-2239	4	1/2" Rue Ring
11	D-3776-W	1	BELT, B-180	34	H-2718	1	1/2" x 5-1/2" Clevis Pin
12	F-1005-02	2	5/16-18 Nyloc Nut	35	P-10935	2	Decal, WARNING
13	F-1005-03	31	3/8-16 Stover Nut	36	P-10941	1	DECAL "DANGER ROTATING BLADES"
14	F-1009-01	6	1/4" Flat Washer	37	P-11413	1	DECAL, HOIST POINT
15	F-1009-02	5	5/16" Flat Washer	38	P-11952	1	DECAL, DECK SIZE, 60
16	F-1015-15	5	5/16-18 x 1" Capscrew	39	P-12496	1	DECAL, MISSING CHUTE
17	F-1019-01	4	1/4" LockWasher	40	P-12837	1	DECAL, DECK BELT ROUTING
18	F-1019-03	20	3/8" LOCKWASHER	42	-----	3	SPINDEL ASS'Y - SEE PAGE 4
19	F-1125	8	5/16-18 Stover Nut	43	-----	1	DOUBLE IDLER ASS'Y - SEE PAGE 5
20	F-1158	2	1/4-20 Stover Nut	44	-----	1	FRONT IDLER ASS'Y - SEE PAGE 5
21	F-1521	6	1/2" WASHER, CUSTOM	45	-----	1	REAR IDLER ASS'Y - SEE PAGE 5
22	F-1538	4	1/4-20 x 3/4" Capscrew	46	625-114A	1	DECK PROP ASS'Y, PIVOT FRONT (JAZEE PRO SR375)
23	F-1558	8	3/8-16 x 7/8" Capscrew	46	625-115A	1	DECK PROP ASS'Y, FIXED FRONT (JAZEE SR225)

# DECK SPINDLE ASSEMBLY 629FN-001A

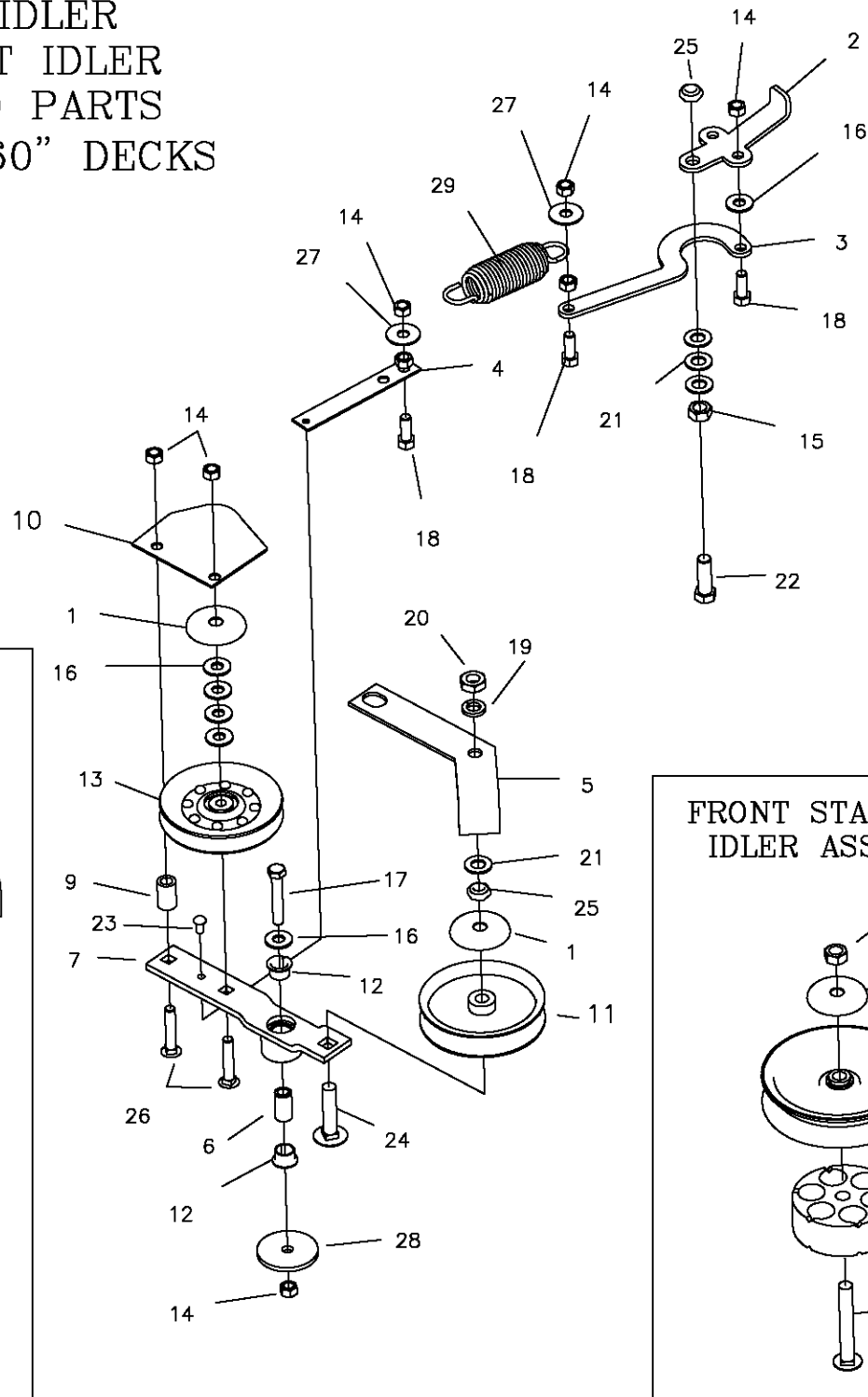


15 (APPLY THIN LAYER OF CHEVRON RYKOTAC GREASE TO THE TOP SURFACES OF THE BEARING AND HOUSING PRIOR TO INSTALLING ITEM #3 (BEARING CAP).)

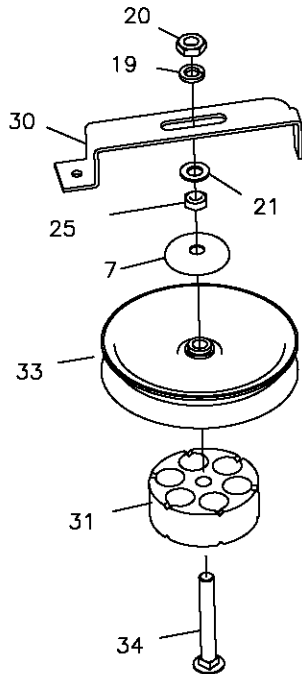
NEW MOWERS ARE SHIPPED WITH 3 to 4 oz OF CHEVRON SRI NLGI 2 GREASE INSIDE EACH SPINDLE HOUSING.

REF NO.	PART NO.	QTY.	DESCRIPTION	REF NO.	PART NO.	QTY.	DESCRIPTION
1	F-2078	1	3/4-6 TOP LOCK NUT	14	F-1573	4	3/8-24 LOCK NUT
2	668-037P	*	48" DECK PULLEY	15	H-2707	1	GREASE PACKET
*	668-038P	*	52" DECK PULLEY	16	H-2653	1	BLADE, HIGH L, 17" CUT 48"
*	668-039P	*	60" DECK PULLEY	-	H-2654	-	BLADE, HIGH L, 18 3/8" CUT 52"
3	609-292P	1	CAP, BEARING	-	H-2655	-	BLADE, HIGH L, 21" CUT 60"
4	H-2639	2	O'RING, RUBBER	OPTIONAL BLADES			
5	D-3867	2	BEARING, #6206	-	H-2659	-	BLADE, LOW L, 17" CUT 48"
6	609-289P	1	SHAFT, SPINDLE	-	H-2660	-	BLADE, LOW L, 18 3/8" CUT, 52"
7	609-285P	1	HOUSING, SPINDLE	-	H-2661	-	BLADE, LOW L, 21" CUT, 60"
8	609-288P	1	BLADE DRIVER	-	H-2665	-	BLADE, GATOR, 17" CUT 48"
9	660-099P	1	BLADE WASHER	-	H-2666	-	BLADE, GATOR, 18 3/8" CUT 52"
10	F-2073	1	5/8-11 X 1.5 HHCS GR. 8	-	H-2667	-	BLADE, GATOR, 21" CUT 60"
11	609-034P	4	SPINDLE SPACER, WASHER				
12	F-1572	4	3/8-24 X 1.5 CAP SCREW				
13	F-1019-03	4	3/8 LOCK WASHER				

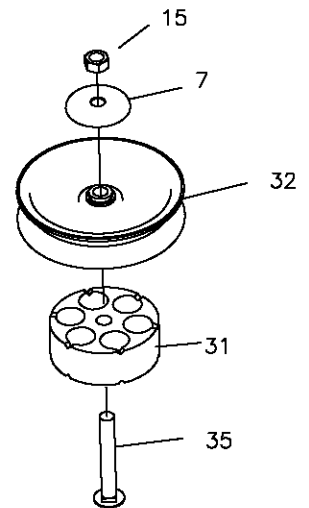
# DOUBLE IDLER DRIVE BELT IDLER & RELATED PARTS 48", 52", & 60" DECKS



### RIGHT REAR STATIONARY IDLER ASSEMBLY

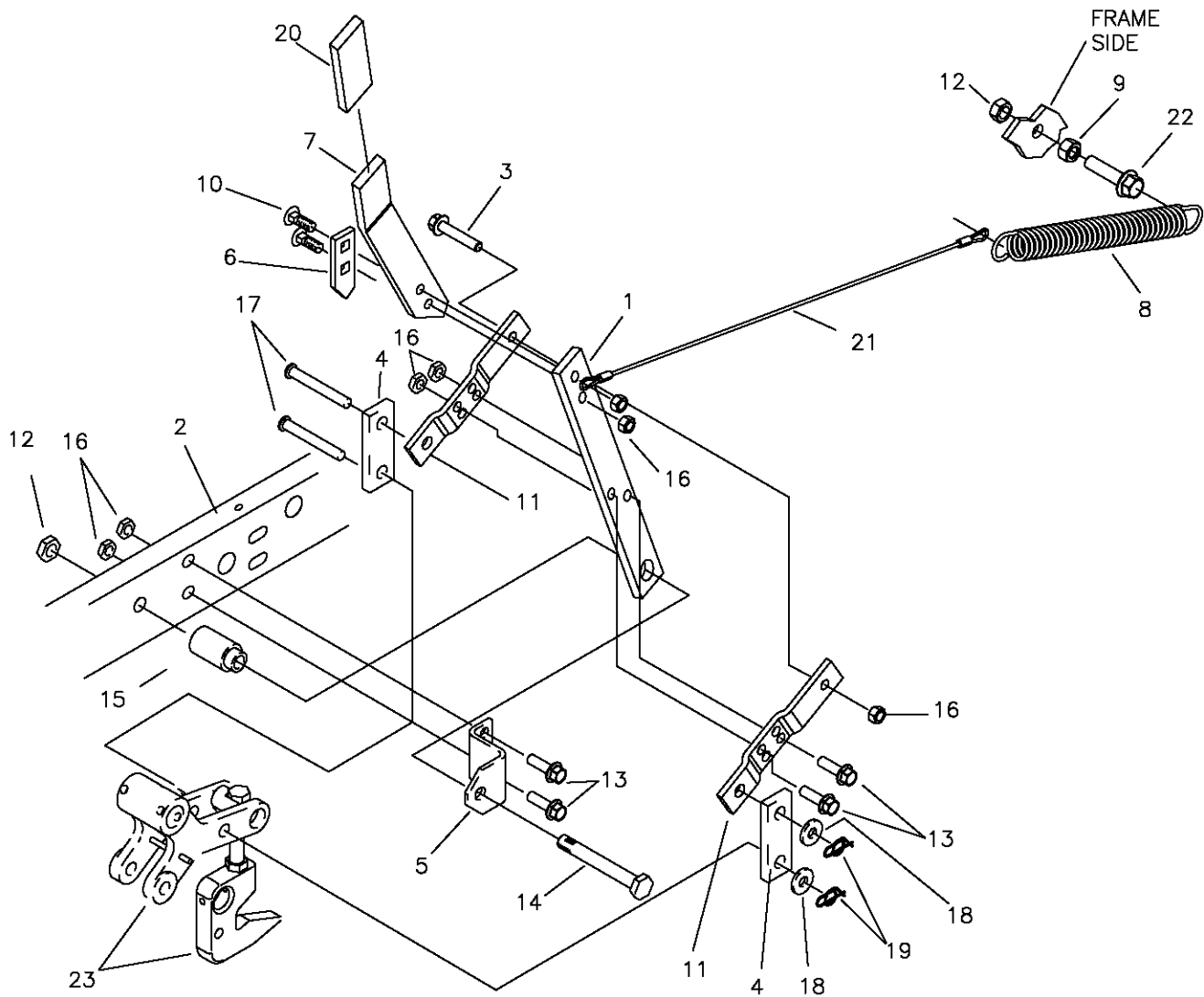


### FRONT STATIONARY IDLER ASSEMBLY



REF NO.	PART NO.	QTY.	DESCRIPTION	REF NO.	PART NO.	QTY.	DESCRIPTION
1	620-201P	4	WASHER, BEARING CAP	19	F-1464	2	1/2" LOCKWASHER
2	660-030P	1	Belt Tightner Handle	20	F-1489	2	1/2-13 Hex Jam Nut
3	660-031P	1	Belt Tightner Arm	21	F-1521	9	1/2" WASHER, CUSTOM
4	660-081P	1	EXTENSION FOR SPRING	22	F-1526	1	1/2-13 x 1-1/2" Capscrew
5	660-110P	1	BELT KEEPER, B BELT	23	F-1733	1	1/4" x 1/2" DRIVE SCREW
6	660-135P	1	MOUNTING PIN	24	F-1822	1	1/2-13 X 2-1/4" CARRIAGE BOLT
7	660-138W	1	IDLER ARM WLDT, 1/2" OFFSET	25	F-1966	3	1/2-13 THIN NYLOC NUT
8	660W-003W	1	WLDT, DECK 48"	26	F-1976	2	3/8-16 x 2" Carriage Bolt
9	668-021P	1	SPACER, BELT GUARD	27	F-2083	2	WASHER, 3/8 FENDER
10	668-029P	1	BELT GUARD	28	F-2102	1	WASHER, 406ID X 2.250D X 7GA THK
11	D-3338	1	Pulley flat idler 1/2" Bore 4"	29	H-2619	1	SPRING, 5 X 1-1/2, TAPERED ENDS
12	D-3730	2	Flanged Bushing 5/8" Bore	30	660-112P	1	BELT KEEPER
13	D-3758	1	PULLEY V-IDLER 4.48 O.D. 3/8 HOLE	31	660-148P	2	SPACER IDLER MOUNT
14	F-1005-03	22	3/8-16 Stover Nut	32	D-3904	1	PULLEY, FLAT IDLER, 5"
15	F-1005-05	2	1/2-13 Stover Nut	33	D-3903	1	PULLEY, FLAT IDLER, 6"
16	F-1009-03	6	3/8" Flat Washer	34	F-2079	1	CARRIAGE BOLT 1/2-13 X 3-3/4"
17	F-1268	1	3/8-16 x 2-1/4" Capscrew	35	F-2106	1	1/2-13 X 3-1/2" CARRIAGE BOLT
18	F-1394	3	3/8-16 x 1" Capscrew				

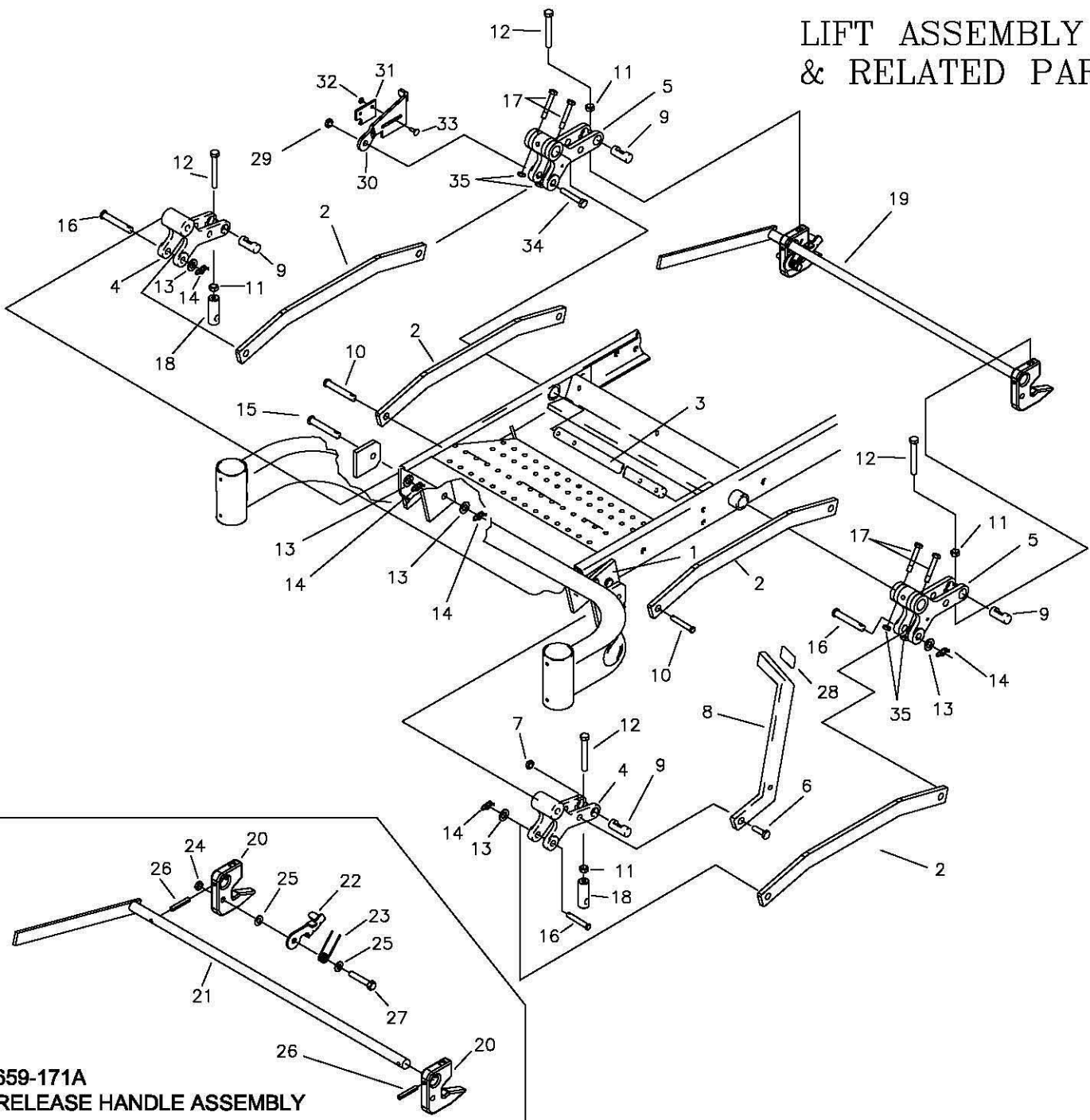
# LIFT HANDLE ASSEMBLY & RELATED PARTS



REF NO.	PART NO.	QTY.	DESCRIPTION	REF NO.	PART NO.	QTY.	DESCRIPTION
1	709-102P	1	LIFT HANDLE, LOWER	15	642-095P	1	HANDLE PIVOT PIN
2	659-022W	1	FRAME WELDMENT, LH.	16	F-1005-03	7	NUT, 3/8-16 LOCKNUT (STOVER)
3	F-2126	1	3/8-16 X 2" CAPSCREW	17	F-1889	2	CLEVIS PIN, 1/2 X 2 5/8"
4	642-061P	2	HANDLE LINK	18	F-1521	2	1/2" FLAT WASHER
5	642-041P	1	HANDLE PIVOT BRACKET	19	H-2239	2	RUE RING, 1/2"
6	642-127P	1	TOP PEG LATCH PLATE	20	H-2324	1	VINYL GRIP, 3/8 X 1 1/2"
7	659-355P	1	LIFY HANDLE, UPPER	21	H-2460	1	SPRING EXTENSION CABLE
8	H-1610	1	SPRING, 1 1/2" OD. X 8"	22	F-2128	1	FHCS 1/2-13 X 2" GR. 5
9	F-1462	1	NUT, 1/2-20 JAM	23	-----	-	SEE PAGE 7
10	F-1672	2	CARRIAGE BOLT, 3/8-16 X 1 1/4"				
11	642-060P	2	SPRING ANCHOR PLATE				
12	F-1005-05	2	NUT, 1/2-13 LOCKNUT				
13	F-2125	4	1/2-13 X 1 1/4" GR. 5				
14	F-1439	1	1/2-13 X 3" GR. 5				



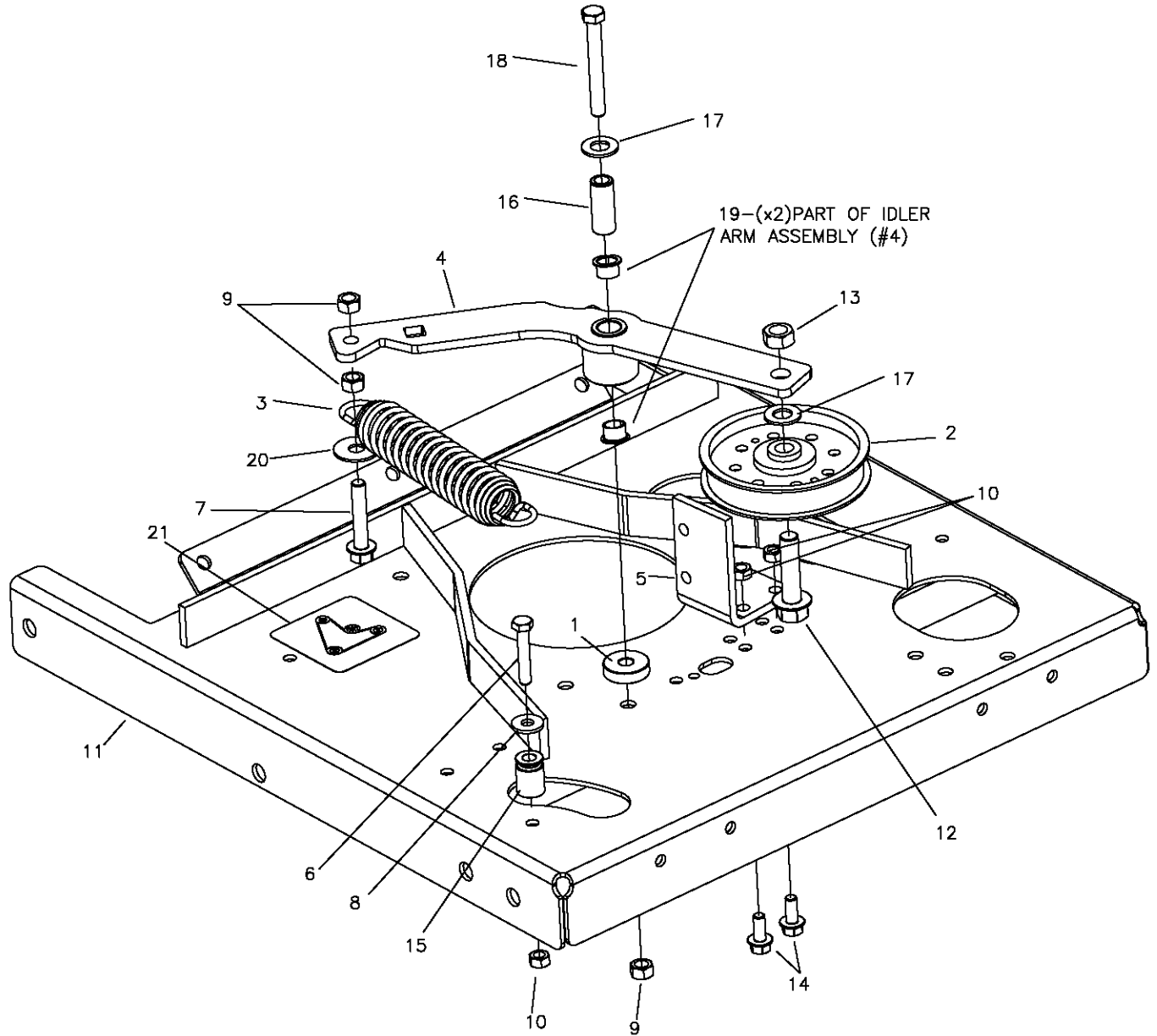
# LIFT ASSEMBLY & RELATED PARTS



**659-171A  
RELEASE HANDLE ASSEMBLY**

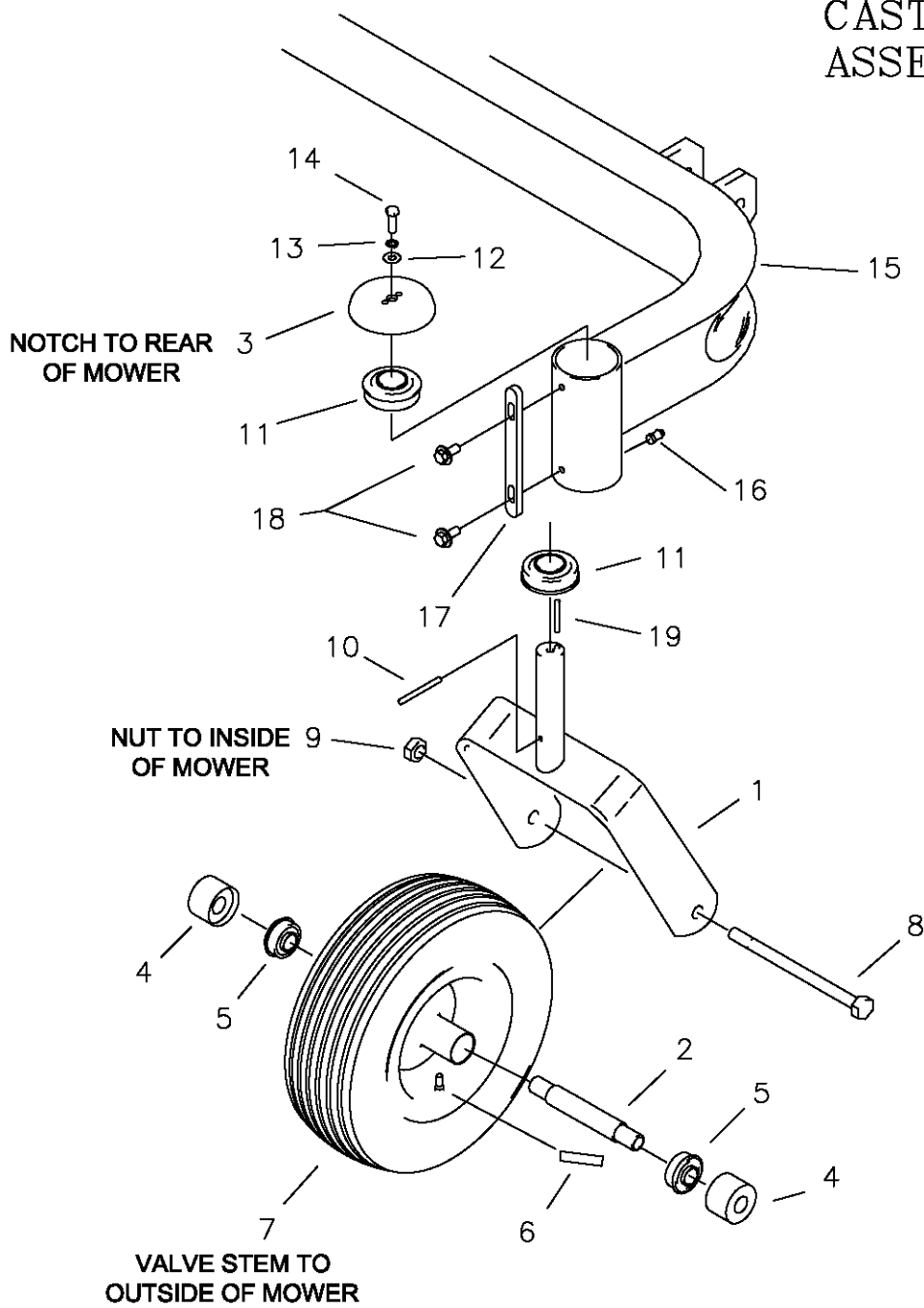
ITEM #	PART #	QTY	DESCRIPTION	ITEM #	PART #	QTY	DESCRIPTION
1	642-063P	2	DRAG BAR TAB	19	659-171A	1	RELEASE HANDLE ASSEMBLY
2	659-399P	4	DRAG LINK BAR	20	659-140P	2	DECK HOOK
3	620-051P	1	LIFT BAR	21	659-148W	1	RELEASE HANDLE WELDMENT
4	642-081P	2	LIFT SLEEVE, FRONT	22	659-145P	1	HOOK KEEPER
5	642-193P	2	LIFT SLEEVE, REAR	23	H-2547	1	SPRING, TORSION
6	F-1879	1	5/16-18 X 1 1/4" GR.5	24	F-1005-03	1	NUT, 3/8-16, STOVER
7	F-1125	1	5/16-18 STOVER NUT	25	F-1009-03	2	WASHER, FLAT, 3/8"
8	659-056P	1	DECK LIFT PEDAL	26	F-2009	2	SPIROL ROLL PIN 1/4 X 1-1/2
9	642-177P	4	HANGER PIN	27	F-1073	1	CAPSCREW, 3/8-16 X 2, GR. 5
10	F-1815	2	CLEVIS PIN, 1/2 X 1 1/4"	28	H-2401	1	TREAD PAD
11	F-1489	4	NUT, 1/2" JAM	29	F-1005-05	1	1/2" STOVER NUT
12	F-1936	4	1/2-13 X 3 1/2, 2" THREAD	30	659-146P	1	LATCH PLATE
13	F-1521	8	WASHER, 1/2 NARROW	31	659-170P	1	PLATE, CATCH
14	H-2239	8	RUE RING, 1/2"	32	F-1158	2	NUT, 1/4" STOVER
15	H-2240	2	CLEVIS PIN, 1/2 X 4 1/2"	33	F-1823	2	CARRIAGE BOLT, 1/4-20 X 3/4"
16	F-1898	3	CLEVIS PIN, 1/2 X 2 3/4"	34	F-1828	1	1/2-13 x 3-1/2" CAPSCREW
17	F-2039	4	5/16-24 x 2" HHCS	35	F-2041	4	5/16-24 JAM NUT
18	642-175P	2	ADJUSTABLE HANGER END				

# TRANSMISSION IDLERS & RELATED PARTS



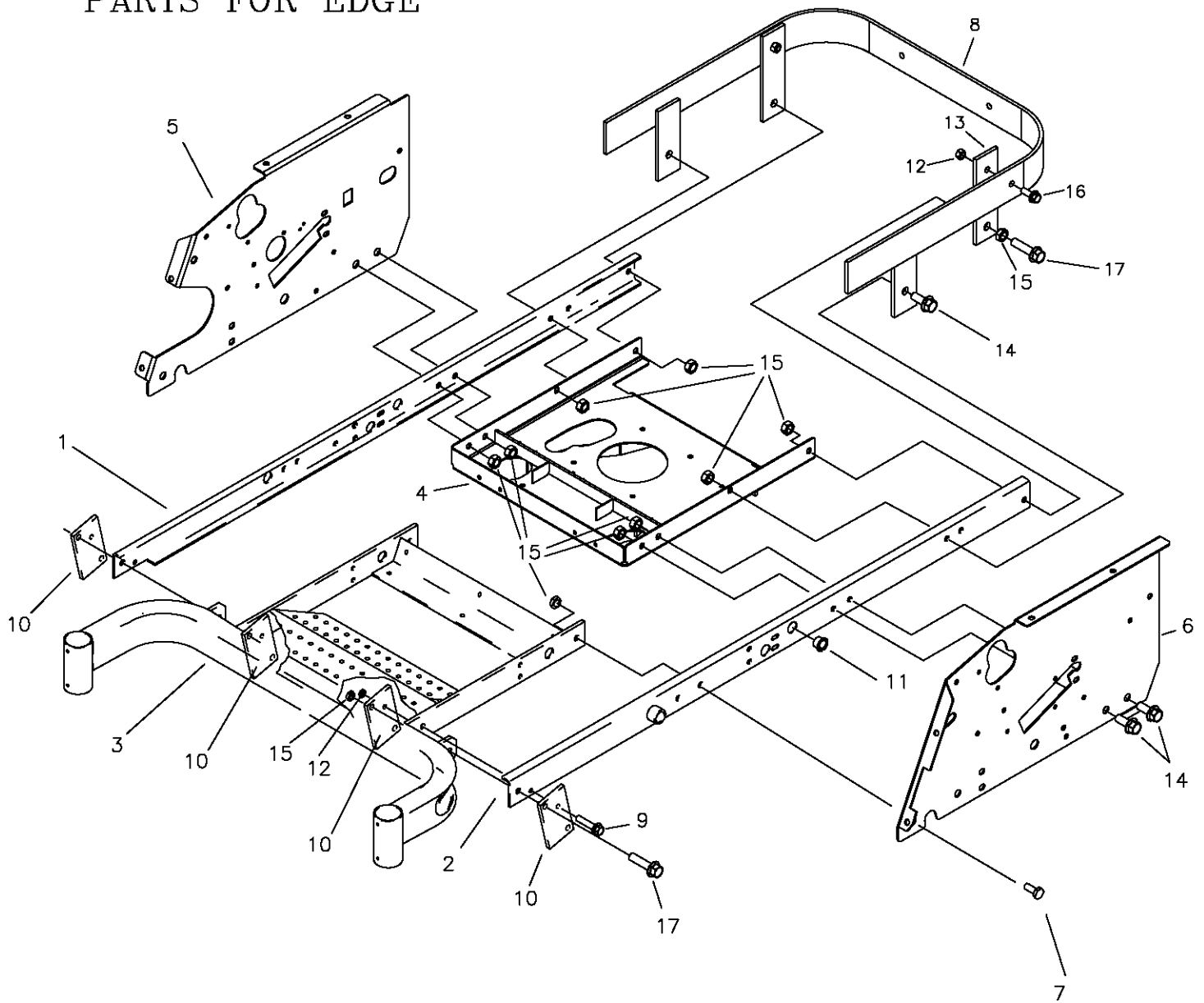
ITEM #	PART #	QTY	DESCRIPTION	ITEM #	PART #	QTY	DESCRIPTION
1	707-022P	1	SPACER	15	707-084P	1	TUBE, SPRING MOUNT
2	D-3617	1	PULLEY, FLAT IDLER, 1/2" BORE, 4"	16	659-085P	1	MOUNTING PIN
3	H-2619	1	SPRING, 5x1-1/2, TAPERED ENDS	17	F-1521	2	1/2" FLAT WASHER
4	707-012A	1	IDLER ARM ASSEMBLY	18	F-1537	1	3/8-16 x 3" CAPSCREW
5	700-026P	1	CLUTCH STOP	19	D-3730	2	FLANGED BUSHING
6	F-1015-18	1	5/16-18 x 1-3/4" CAPSCREW	20	F-2083	1	WASHER, 3/8 FENDER
7	F-1015-27	1	3/8-16 X 1-1/2" GR. 5	21	P-12918	1	DECAL, HYDRO BELT ROUTING
8	F-1009-02	1	5/16" FLAT WASHER				
9	F-1005-03	6	3/8-16 STOVER LOCK NUT				
10	F-1125	3	5/16" LOCK NUT				
11	700-107W	1	MOTOR MOUNT WELDMENT				
12	F-2128	1	FHCS, 1/2-13 x 2" GR.5				
13	F-1005-05	1	1/2-13 STOVER NUT				
14	F-2120	2	FHCS, 5/16-16 x 3/4" GR.5				

# CASTER WHEEL ASSEMBLY



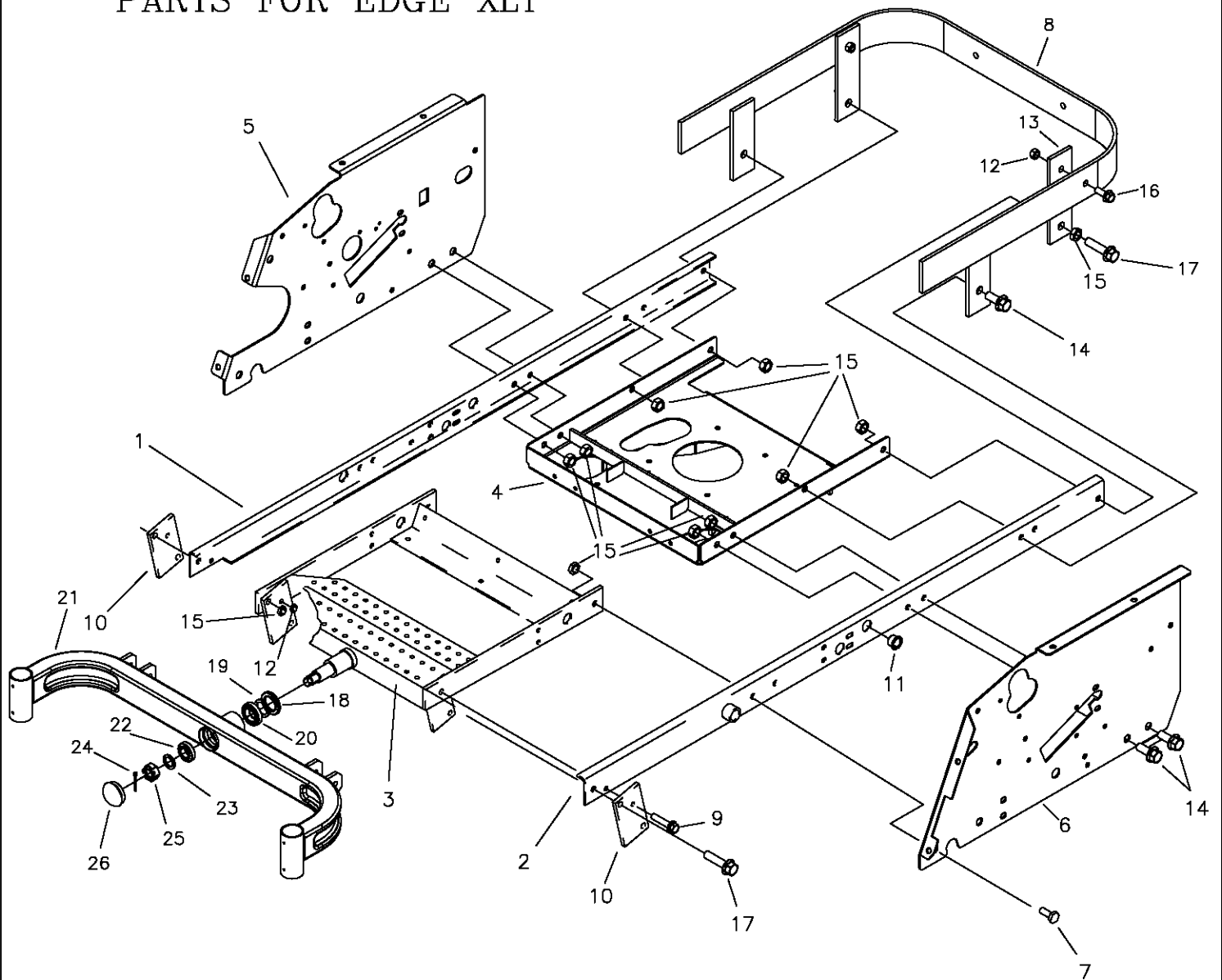
ITEM #	PART #	QTY	DESCRIPTION	ITEM #	PART #	QTY	DESCRIPTION
1	617-375W	2	CASTER YOKE WELDMENT	11	D-2008-02	4	BEARING, SPD SF-16-32
-	659-181A	1	FRONT WHEEL ASS'Y (LH)	12	F-1009-02	2	5/16" FLAT WASHER
-	659-182A	1	FRONT WHEEL ASS'Y (RH)	13	F-1019-02	2	5/16" LOCK WASHER
2	611-136P	2	BEARING SPACER	14	F-1863	2	5/16"-18 X 1" W/NYLOC PATCH
3	636-176P	2	BEARING CAP, RED	15	659-351W	1	FRONT AXLE (EDGE)
4	611-135P	4	BEARING SHIELD	-	659-287W	1	FRONT AXLE (EDGE XLT)
5	D-3432	4	BEARING, 5/8 ID X 1-3/8 OD	16	H-1056	2	GREASE ZERK
6	P-11384	2	DECAL, 12 PSI	17	659-185P	2	STOP TAB
7	D-3574	2	13" TIRE W/RIM	18	F-2030	4	1/4" X 5/8" SELF TAPPING SCREW
8	F-1129	2	1/2-13 X 8" GR. 5 BOLT	19	F-1855	2	3/16" X 1" ROLL PIN
9	F-1005-05	2	1/2-13 LOCK NUT				
10	F-1456	2	3/16" X 2" ROLL PIN				

# FRAME SIDE & RELATED PARTS FOR EDGE



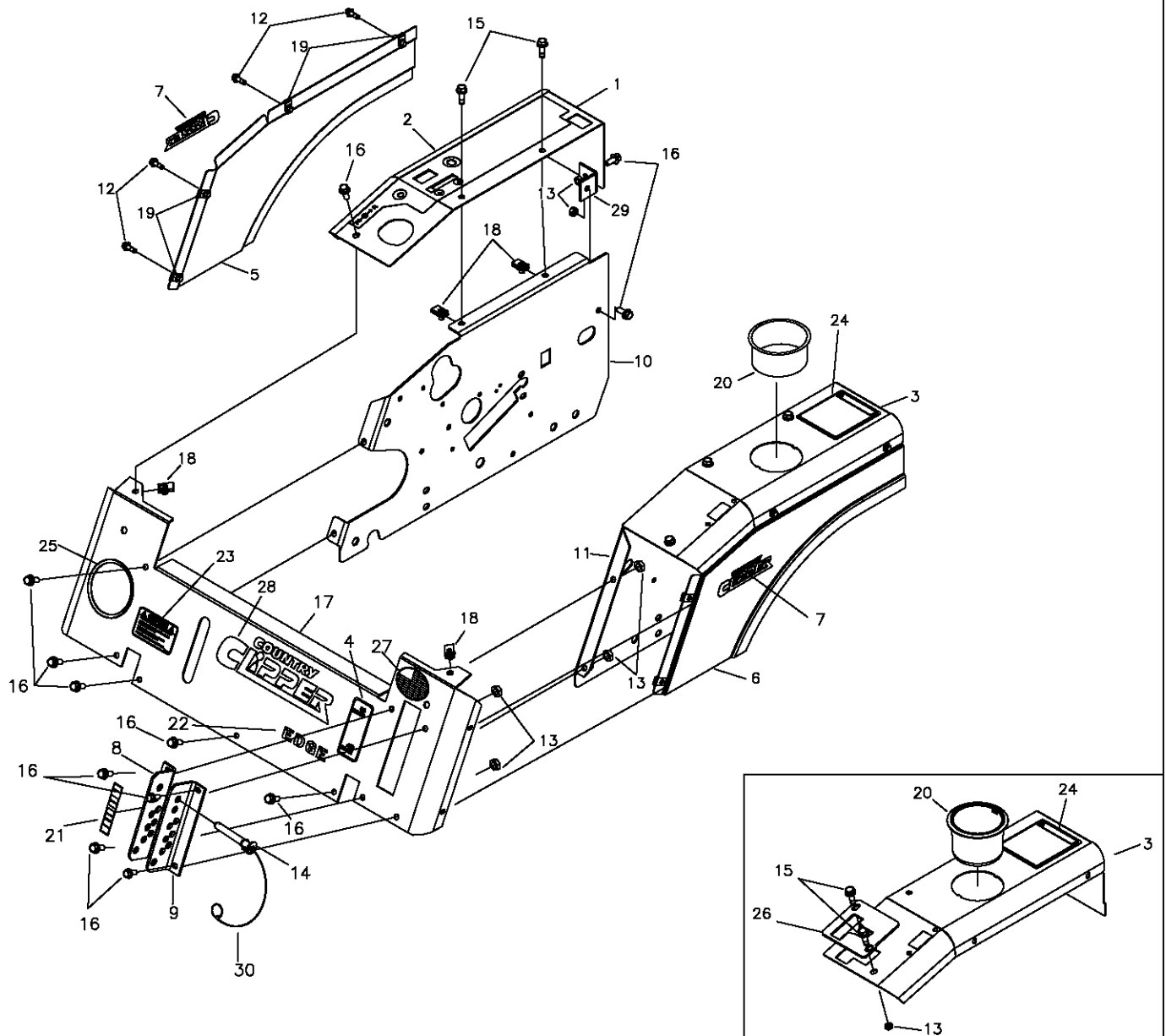
ITEM #	PART #	QTY	DESCRIPTION
1	659-021W	1	FRAME SIDE RH.
2	659-022W	1	FRAME SIDE LH.
3	659-351W	1	AXLE MOUNTING WELDMENT
4	700-107W	1	MOTOR MOUNT WELDMENT
5	700-083P	1	SIDE PANEL RH. (JS)
-	700-109P	1	SIDE PANEL RH. (TS)
6	700-084P	1	SIDE PANEL RH. (JS)
-	700-110P	1	SIDE PANEL LH. (TS)
7	F-1386	2	1/2-13 x 1-1/4" CAPSCREW
8	700-080W	1	WLDT, ENGINE GUARD
9	F-2126	2	FHCS, 3/8-16 x 2" GR.5
10	642-063P	4	DRAG BAR TAB
11	D-3730	2	BUSHING, 5/8 BORE (JS ONLY)
12	F-1005-03	4	3/8-16 STOVER NUT
13	700-078P	1	BAR, BUMPER BRACE
14	F-2127	6	FHCS, 1/2-13 X 1-1/4" GR.5
15	F-1005-05	13	1/2-13 LOCK NUT
16	F-2141	2	FHCS, 3/8-16 X 1" GR.5
17	F-2128	3	FHCS, 1/2-13 X 2", GR.5

# FRAME SIDE & RELATED PARTS FOR EDGE XLT



ITEM #	PART #	QTY	DESCRIPTION	ITEM #	PART #	QTY	DESCRIPTION
1	659-021W	1	FRAME SIDE RH.	15	F-1005-05	13	1/2-13 LOCK NUT
2	659-022W	1	FRAME SIDE LH.	16	F-2141	2	FHCS, 3/8-16 X 1" GR.5
3	663-094W	1	AXLE MOUNTING WELDMENT	17	F-2128	3	FHCS, 1/2-13 X 2", GR.5
4	700-107W	1	MOTOR MOUNT WELDMENT	18	H-2600	1	SEAL, SHAFT, 1.50, 2.38, 0.313
5	700-083P	1	SIDE PANEL RH. (JS)	19	663-074P	1	RING, BACKUP, STEEL
-	700-109P	1	SIDE PANEL RH. (TS)	20	D-3825	1	BRG, TAPPERED, SET
6	700-084P	1	SIDE PANEL RH. (JS)	21	659-287W	1	FRONT AXLE WLDT.
-	700-110P	1	SIDE PANEL LH. (TS)	22	D-3826	1	BRG, TAPARED, SET
7	F-1386	2	1/2-13 x 1-1/4" CAPSCREW	23	606-303P	1	1" WASHER
8	700-080W	1	WLDT, ENGINE GUARD	24	F-1728	1	3/16 X 2" COTTER PIN
9	F-2126	2	FHCS, 3/8-16 x 2" GR.5	25	F-1724	1	1-14 SLOTTED NUT
10	642-063P	2	DRAG BAR TAB	26	H-1924	1	GREASE CAP
11	D-3730	2	BUSHING, 5/8 BORE (JS ONLY)				
12	F-1005-03	4	3/8-16 STOVER NUT				
13	700-078P	1	BAR, BUMPER BRACE				
14	F-2127	6	FHCS, 1/2-13 X 1-1/4" GR.5				

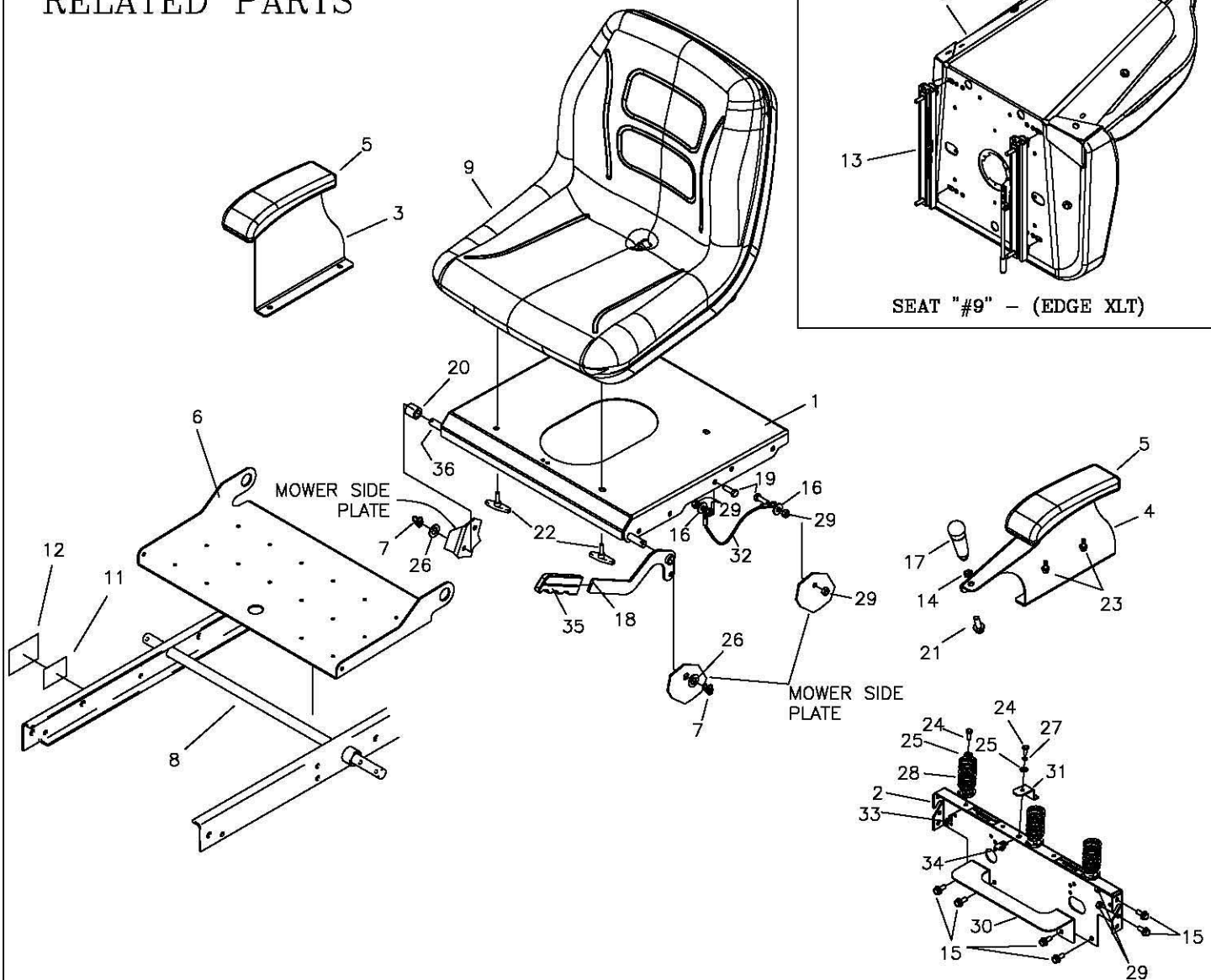
# FENDER ASSEMBLY



**TWINSTICK FENDER ASSY**

REF NO.	PART NO.	QTY.	DESCRIPTION	REF NO.	PART NO.	QTY.	DESCRIPTION
1	625-146A	1	FENDER CAP w/DECAL, EDGE, RH (JS)	17	625-144A	1	FRONT PANEL w/DECAL, EDGE
-	625-148A	1	FENDER CAP w/DECAL, EDGE, RH (TS)	-	625-145A	1	FRONT PANEL w/DECAL, EDGE XLT
2	P-12925	1	DECAL, CONTROL PANEL	18	F-1860	6	5/16-18 "U"-NUT
3	625-147A	1	FENDER CAP w/DECAL, EDGE, LH (JS)	19	F-1858	8	1/4-20 "U"-NUT
-	625-149A	1	FENDER CAP w/DECAL, EDGE, LH (TS)	20	H-2228	1	CUP HOLDER
4	P-11382	1	DECAL, PARK BRAKE	21	P-12039	1	DECAL, "CUT HEIGHT"
5	625-150A	1	FENDER SKIRT w/DECAL, EDGE, RH	22	P-12941	1	DECAL, EDGE, GLOSS BLK
6	625-151A	1	FENDER SKIRT w/DECAL, EDGE, LH	---	P-12974	1	DECAL, EDGE XLT, GLOSS BLK
7	P-12098	2	DECAL, CC, SM	23	P-12557	1	DECAL, "CAUTION"
8	659-115A	1	LATCH PLATE RH W/DECAL	24	P-11370	1	DECAL, WARNING
9	642-129P	1	LATCH PLATE LH.	25	H-1626	1	U CHANNEL TRIM
10	-----	1	SEE PAGE 10	26	659-262P	1	NEUTRAL PLATE
11	-----	1	SEE PAGE 10	27	P-12253	1	DECAL, "USA"
12	F-2119	8	FHCS, 1/4-20x3/4", GR.5 w/PATCH	28	P-12097	1	DECAL, COLORED, CC
13	F-1125	15	5/16-18 LOCK NUT	29	707-060P	2	BRACKET, FENDER
14	F-2116	1	LOCK PIN, POSITIVE 1/2" x 2-1/2"	30	F-2069	1	LANYARD
15	F-2121	8	FHCS, 5/16-18x1" GR.5 w/PATCH				
16	F-2120	15	FHCS, 5/16-18 X 3/4" GR.5				

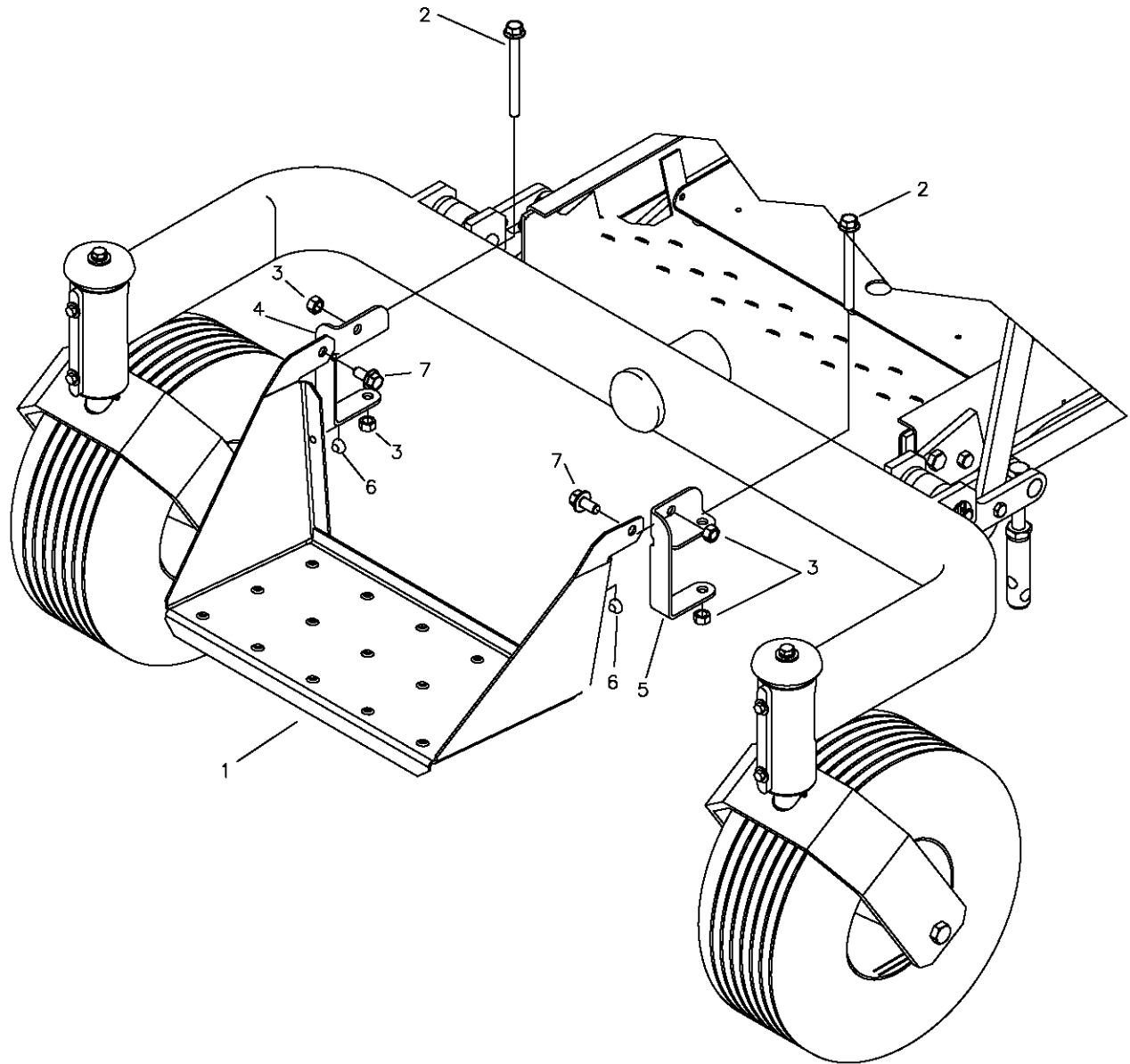
# SEAT, FOOTDECK & RELATED PARTS



SEAT "#9" - (EDGE XLT)

REF NO.	PART NO.	QTY.	DESCRIPTION	REF NO.	PART NO.	QTY.	DESCRIPTION
1	700-097P	1	PLATE, SEAT (EDGE)	19	F-1015-15	2	5/16-18 x 1" CAPSCREW
-	707-005P	1	PLATE, SEAT (EDGE XLT)	20	707-046P	1	SPACER, SEAT PAN
2	707-039P	1	PLT, REAR SEAT FILLER	21	F-2141	1	FHCS, 5/16-18x1" GR5
3	700-092P	1	PLATE, ARM REST RH	22	659-073A	4	T-HANDLE ASSEMBLY (EDGE)
4	700-093P	1	PLATE, ARM REST LH (JS)	-	F-2063	4	3/8-16 NYLOC NUT, FLANGED (EDGE XLT)
-	700-095P	1	PLATE, ARM REST LH (TS)	23	F-2134	6	HFCS 1/4-20x5/8" SELF TAPPING
5	H-2753	2	PAD, ARM REST	24	F-1538	4	1/4-20x3/4" CAPSCREW
6	659-307P	1	FOOT DECK	25	F-1009-01	4	1/4" FLAT WASHER
7	H-2239	1	1/2" RUE RING	26	F-1521	2	1/2" WASHER
8	620-051P	1	LIFT BAR	27	F-1019-01	1	1/4" LOCK WASHER
9	H-2746	1	SEAT (EDGE)	28	H-1920	3	SPRING, ASSIST
-	H-2604	1	SEAT (EDGE XLT)	29	F-1125	9	5/16-18 STOVER NUT
11	P-12689	1	SERIAL TAG	30	707-066P	1	SHELF, REAR, FUEL TANK
12	P-12473	1	SERIAL TAG LAMINATION DECAL	31	659-137P	1	BATTERY HOLD DOWN
13	H-2760	1	TRACK KIT	32	H-2460	1	CABLE
14	F-1486	1	3/8-16 JAM NUT	33	F-1005-01	1	1/4-20 STOVER NUT
15	F-2120	8	FHCS, 5/16-18x3/4" GR5	34	F-1858	1	1/4-20 "U" NUT
16	F-1009-02	3	5/16" FLAT WASHER	35	H-1926	1	HANDLE, GRIP
17	H-2764	1	HANDLE, JOYSTICK	36	700-091P	1	PIN, SEAT HINGE
18	707-042W	1	BRAKE HANDLE				

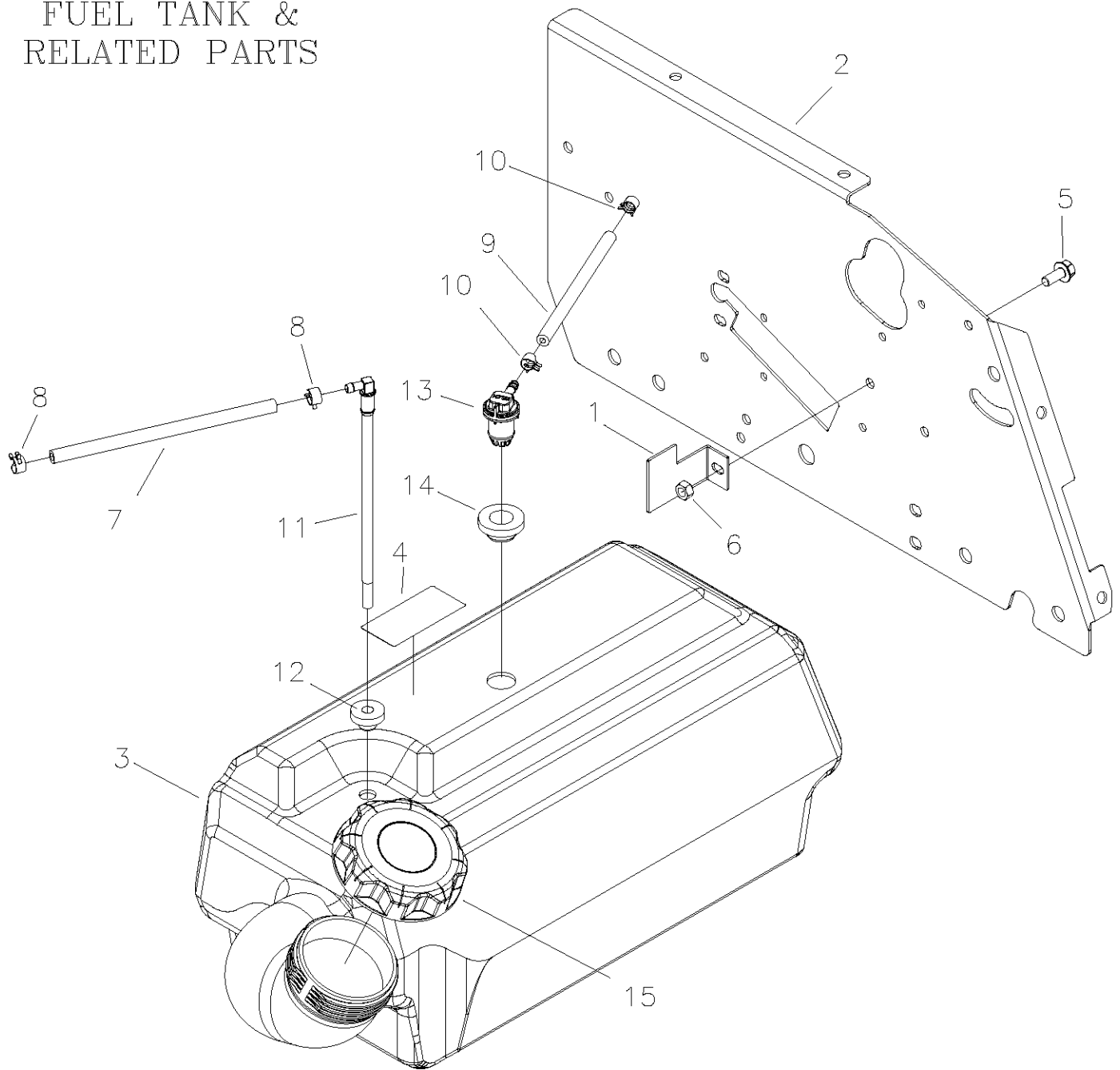
# FRONT STEP ASSEMBLY (EDGE XLT ONLY)



REF NO.	PART NO.	QTY.	DESCRIPTION
1	663-134P	1	FRONT STEP
2	F-2142	2	FHCS, 3/8-16 X 4" GR.5
3	F-1005-03	4	3/8-16 LOCK NUT
4	659-241P	1	BRACKET, STEP MOUNT, RH
5	659-242P	1	BRACKET, STEP MOUNT, LH
6	H-2461	2	RUBBER BUMPER BUTTON
7	F-2124	2	FHCS, 3/8-16 X 3/4" GR.5

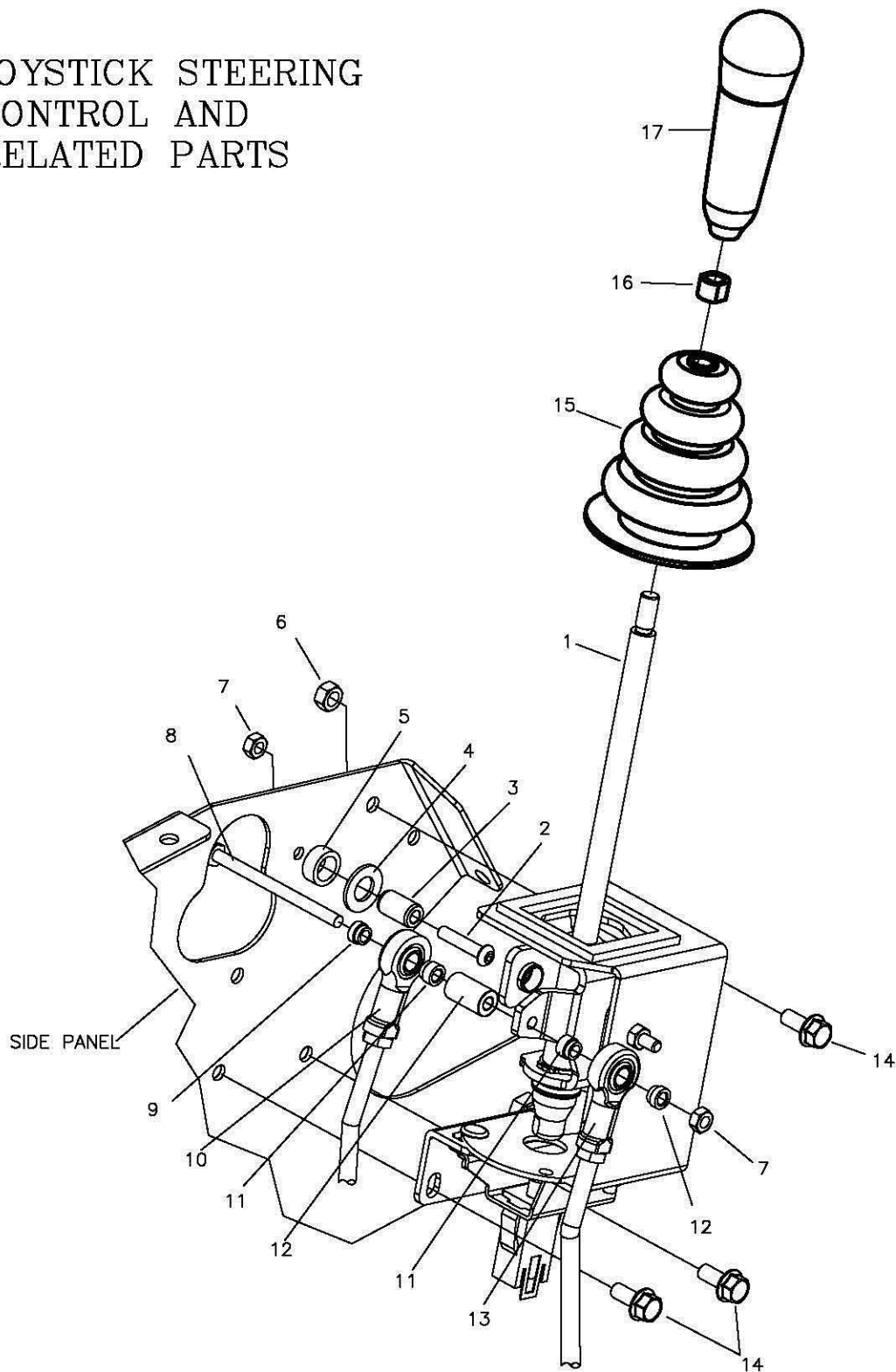


# FUEL TANK & RELATED PARTS



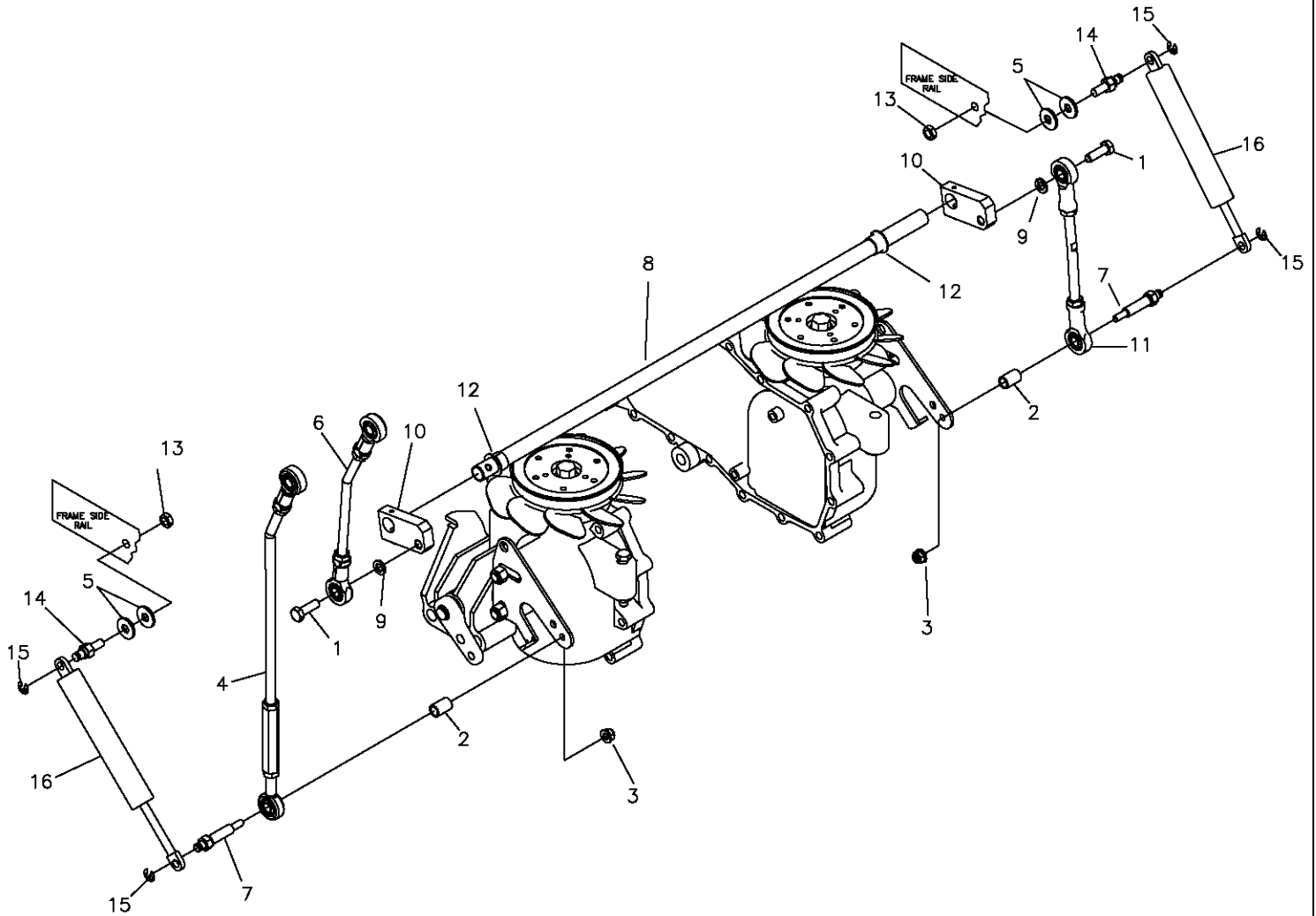
ITEM #	PART #	QTY	DESCRIPTION
1	700-108P	1	STRAP, FUEL TANK
2	-----	1	SEE PAGE #10
3	H-2724	1	FUEL TANK ASSEMBLY, SMALL
4	P-12922	1	CARB/EPA LABEL
5	F-2120	1	FHCS, 5/16-18x3/4", GR5
6	F-1125	1	5/16-18 Stover Nut
7	H-1648	4.0ft	Fuel Line
8	H-1687	2	1/2 O.D. Hose Spring Clamp
9	H-2697	4.0ft	VENT LINE
10	H-2698	2	HOSE CLAMP, .406 OD
11	H-2742	1	PICK UP TUBE
12	H-2741	1	GROMMET, PICK UP TUBE
13	H-2678	1	REMOTE VENT
14	H-2679	2	REMOTE VENT GROMMET
15	H-2743	1	GAS CAP

# JOYSTICK STEERING CONTROL AND RELATED PARTS



REF NO.	PART NO.	QTY.	DESCRIPTION	REF NO.	PART NO.	QTY.	DESCRIPTION
1	625-121A	1	JOYSTICK ASSEMBLY	10	707-082P	1	LINKAGE, INNER, JOYSTICK
2	F-2103	1	BUTTON SHCS, 1/4-20x1"	11	625-107P	1	BUSHING, .375 ROD END
3	625-119P	1	PIN, PIVOT, JS, LONG	12	625-100P	1	TUBE, PIVOT, JOYSTICK
4	F-1521	1	1/2" WASHER	13	707-083P	1	OUTER, LINKAGE, JOYSTICK
5	625-126P	1	SPACER, JOYSTICK PANEL	14	F-2120	3	FHCS, 5/16-18 x 3/4" GR5
6	F-1125	3	5/16-18 STOVER NUT	15	H-1991	1	BOOT
7	F-1005-01	1	1/4-20 LOCK NUT	16	H-2765	1	NUT, JOYSTICK
8	F-1020-01	1	1/4-20 x 3-1/2" CAPSCREW	17	H-2764	1	HANDLE, JOYSTICK
9	625-116P	1	BUSHING, .375 ROD END, SHORT				

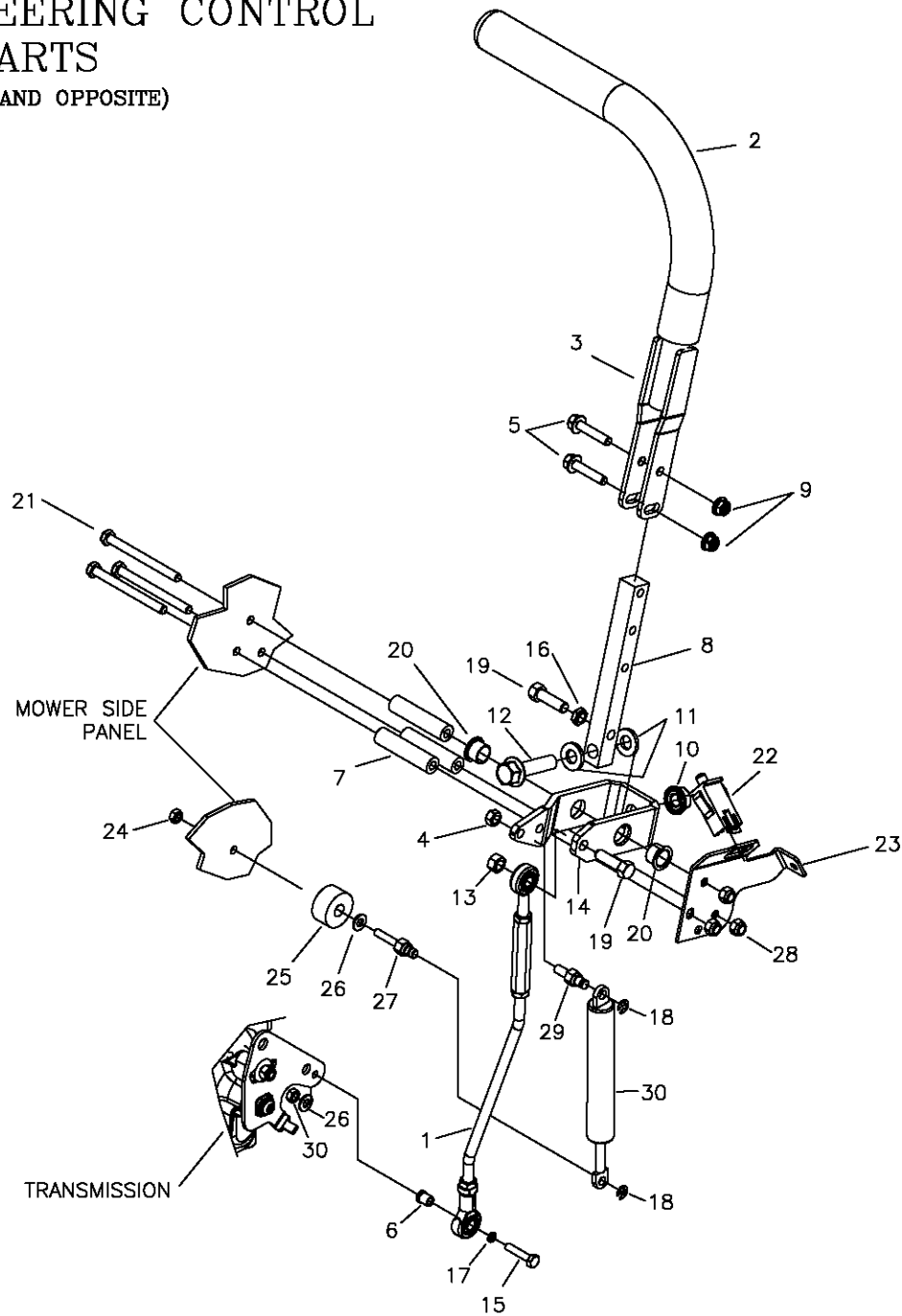
# JOYSTICK STEERING CONTROL & RELATED PARTS (CON'T)



ITEM #	PART #	QTY	DESCRIPTION
1	F-1394	2	3/8-16 x 1" CAPSCREW
2	707-073P	2	STAND-OFF, LINKAGE MOUNT
3	F-2132	2	NUT, 1/4-20 NYLOC, FLANGED
4	707-083P	1	OUTER LINKAGE, JS
5	F-1009-02	4	5/16" FLAT WASHER
6	707-082P	1	INNER LINKAGE, JS
7	707-072P	2	STUD, LINKAGE MOUNT
8	700-055P	1	ROD, SHIFT CROSS
9	F-1019-03	2	3/8" LOCKWASHER
10	625-122A	2	SWIVEL ARM
11	H-2757	1	LINKAGE, JS
12	D-3730	2	BUSHING
13	F-1125	2	5/16-16 STOVER NUT
14	638-028P	2	DAMPER BOLT, 5/16-18 x 3/4
15	F-1610	4	E-RING FOR 1/4" SHAFT
16	H-2467	2	DUAL ACTION DAMPER

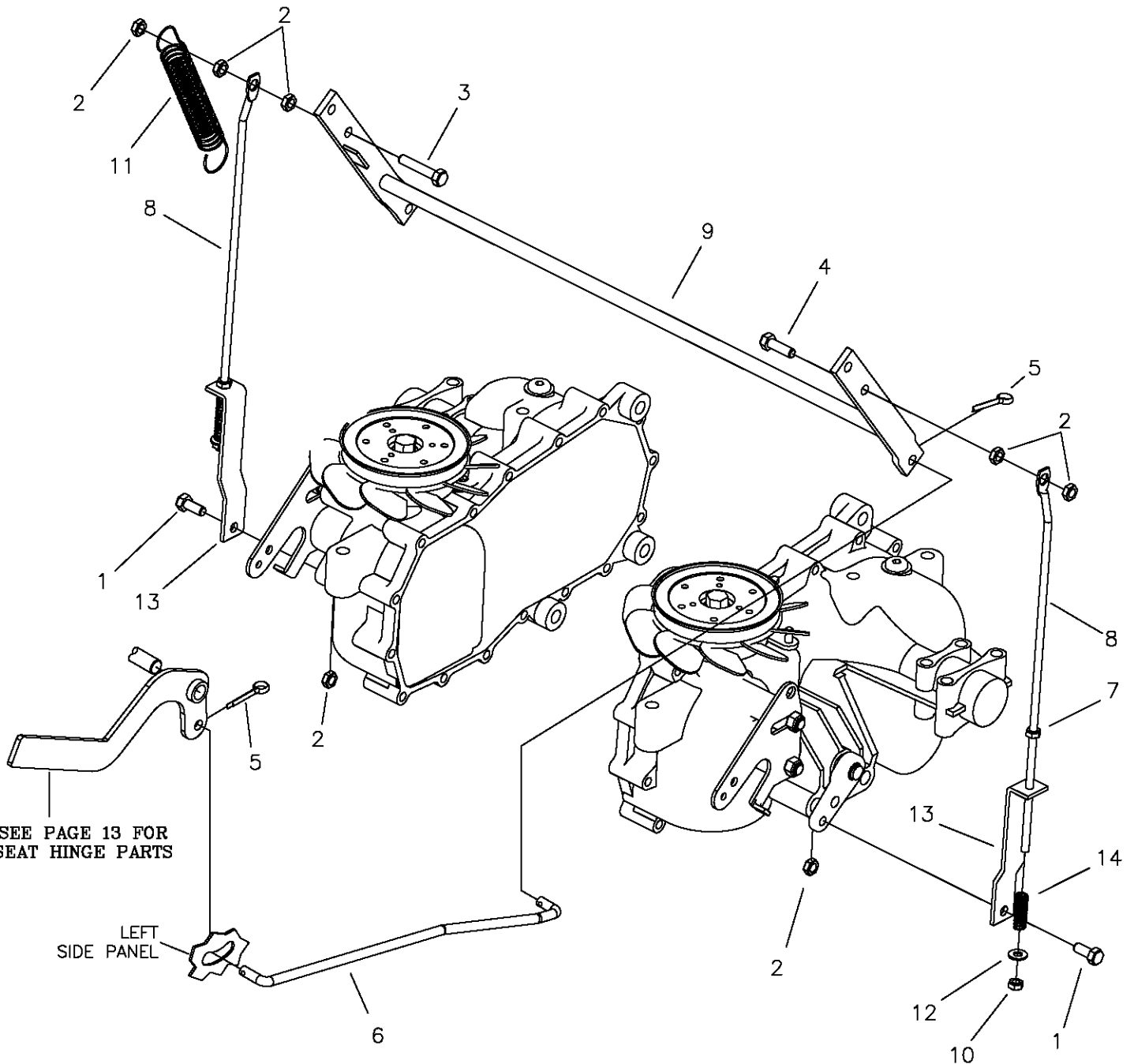
# TWINSTICK STEERING CONTROL & RELATED PARTS

(RIGHTHAND SHOWN, LEFTHAND OPPOSITE)



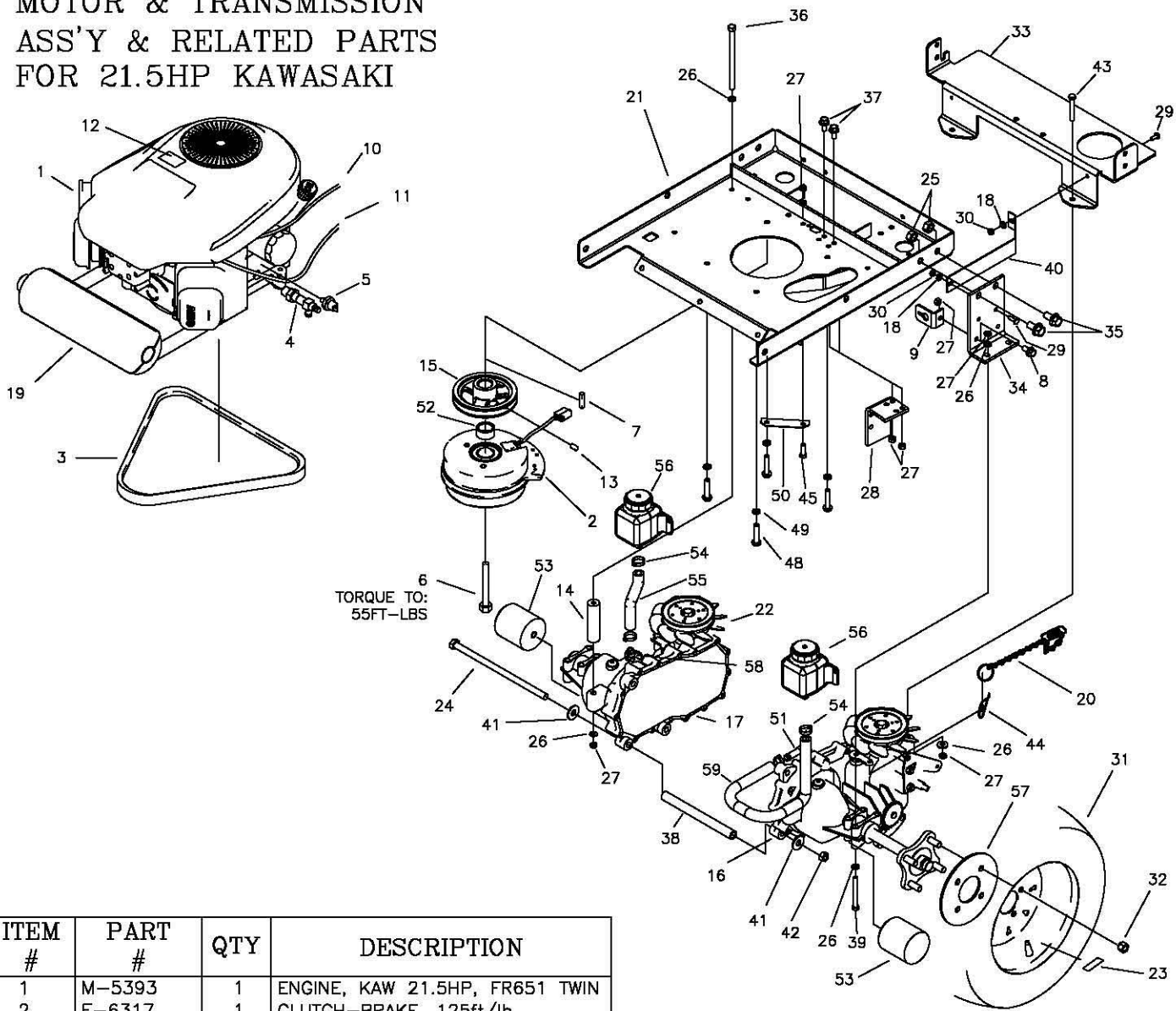
REF NO.	PART NO.	QTY.	DESCRIPTION	REF NO.	PART NO.	QTY.	DESCRIPTION
1	663-050P	1	LINK ROD ASSEMBLY	19	F-1307	2	3/8-16 X 1 1/4" CAPSCREW
2	H-2739	1	GRIP, 15", CLOSED END	20	D-3730	2	FLANGED BUSHING 5/8" BORE
3	659-249W	1	DUAL LEVER CONTROL	21	F-2058	3	5/16-18 x 3 1/2" CAPSCREW
4	F-1125	1	5/16 LOCK NUT	22	E-6474	1	SWITCH, SNAP MOUNT
5	F-2129	2	FHCS, 5/16-18 X 1 1/2" w/PATCH	23	647-242P	1	MOUNTING BRACKET (RH)
6	H-2465	1	ADAPTER, ROD END, LONG	--	647-243P	1	MOUNTING BRACKET (LH)
7	659-252P	3	TUBE SPACER	24	F-1158	1	1/4-20 STOVER NUT
8	659-247P	1	LOWER SHIFT BLOCK	25	F-2045	1	SPACER
9	F-2063	1	5/16-18 NYLOC NUT	26	F-1009-01	2	1/4" FLAT WASHER
10	F-2060	2	1/2-13 NUT, FLANGE LOCK	27	638-029P	1	DAMPER BOLT, 1/4-20
11	606-151P	2	WASHER, NYLON 1/2 ID x 1/8"	28	F-1005-02	3	1/4-20 NYLOC NUT
12	F-2128	1	FHCS, 1/2-13 x 2" GR5	29	638-028P	1	DAMPER BOLT, 5/16-18 X 3/4"
13	F-1005-03	1	3/8-16 STOVER NUT	30	H-2467	1	DUAL ACTION DAMPNER
14	659-243P	1	SHIFTING YOKE				
15	F-1539	1	1-4-20 x 1-1/4" CAPSCREW				
16	F-1486	2	3/8-16 JAM NUT				
17	F-1019-01	4	1/4" LOCK WASHER				
18	F-1610	2	E-RING FOR 1/4" SHAFT				

# PARKING BRAKE ASSEMBLY & RELATED PARTS



ITEM #	PART #	QTY	DESCRIPTION
1	F-1546	4	5/16-18 X 3/4" H.H.C.S.
2	F-1125	6	5/16" STOVER LOCK NUT
3	F-1015-17	1	5/16-18 X 1-1/2" H.H.C.S.
4	F-1015-15	1	5/16-18 X 1" H.H.C.S
5	F-1491	2	1" COTTER PIN
6	707-044P	1	LINK, PARK BRAKE
7	F-1158	2	1/4" STOVER LOCK NUT
8	H-2452	2	BRAKE LINK BAR, BENT
9	659-206W	1	BRAKE ROD WELDMENT
10	F-1748	2	1/4" NYLOC LOCK NUT
11	H-1635	1	EXTENSION SPRING 3/4 X 4"
12	F-1009-01	2	1/4" FLAT WASHER
13	659-159P	2	LOWER BRAKE LINK
14	H-1637	2	COMPRESSION SPRING

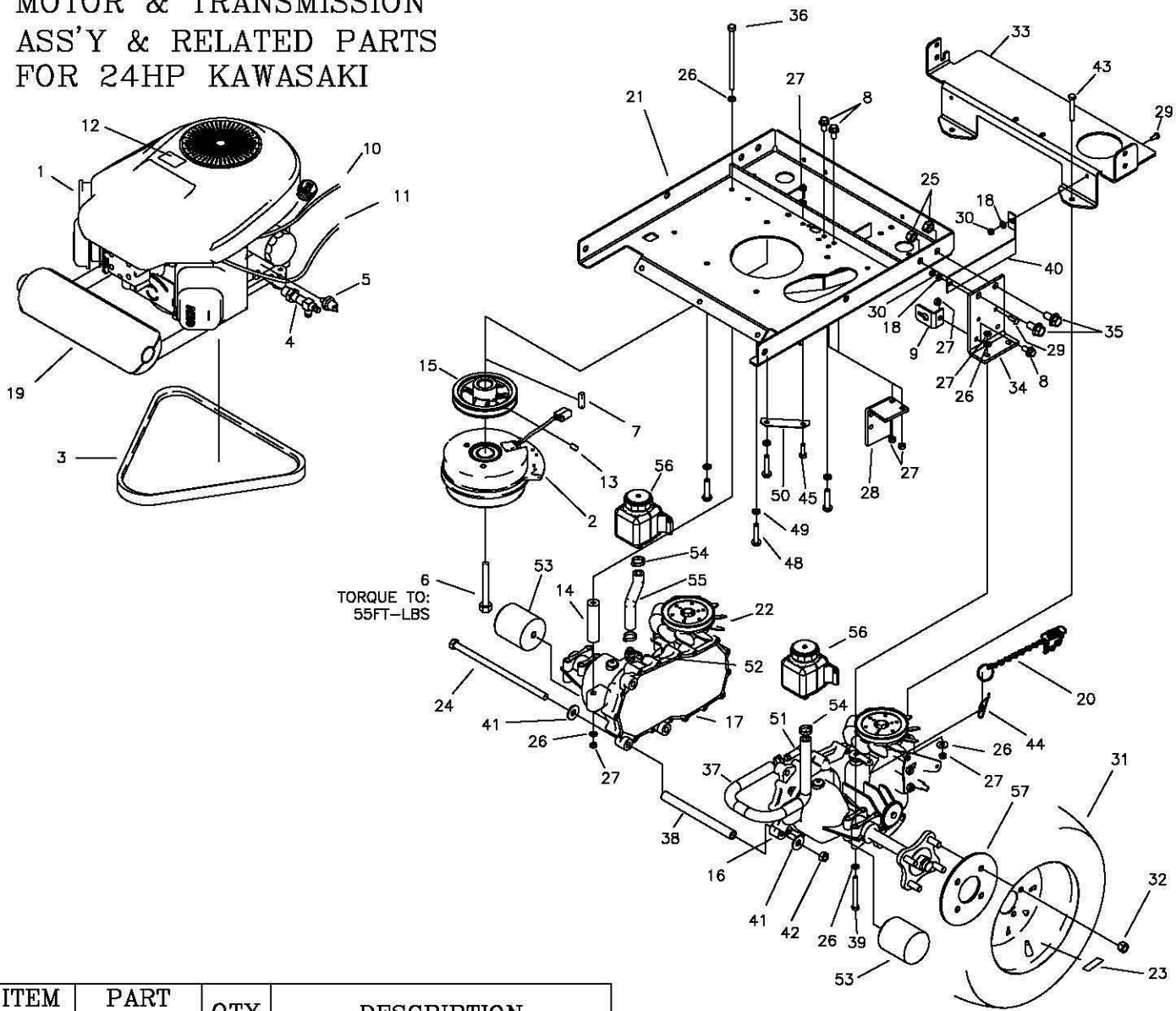
# MOTOR & TRANSMISSION ASS'Y & RELATED PARTS FOR 21.5HP KAWASAKI



ITEM #	PART #	QTY	DESCRIPTION
1	M-5393	1	ENGINE, KAW 21.5HP, FR651 TWIN
2	E-6317	1	CLUTCH-BRAKE, 125ft/lb
3	D-3891	1	V-BELT, KEVLAR CORD, A-65
4	H-2590	1	OIL DRAIN VALVE
5	E-6307	1	OIL PRESSURE SWITCH
6	F-2113	1	7/16-20x2-1/2" CAPSCREW, GR8
7	621-113P	1	KEY, 1/4 SQ. X 1-1/4"
8	F-2124	2	FHCS, 5/16-18 X 3/4" BOLT GR5
9	659-119P	1	FREE WHEEL ANCHOR
10	H-2287	1	CHOKE CABLE
11	H-2610	1	THROTTLE CABLE
12	P-10077-11	1	DECAL, "CLEAN"
13	F-1228	1	SETSCREW, 1/4" X 1/4"
14	659-121P	2	REAR HYDRO BRACE
15	659-153P	1	MOTOR PULLEY
16	D-3886-01	1	TRANSAXLE, RH, ZT-2800
17	D-3886-02	1	TRANSAXLE, LH, ZT-2800
18	F-1009-01	4	1/4" FLAT WASHER
19	H-2759	1	MUFFLER, KAWASAKI
20	707-074P	2	FREEWHEEL CHAIN W/SPRING
21	707-009W	1	MOTOR MOUNT
22	H-2539	2	FAN BLADE REPLACEMENT
23	P-11384	2	DECAL, TIRE PRESSURE, 12 PSI
24	F-2007	1	3/8-16 X 12-1/2" HEX BOLT
25	F-1005-05	4	1/2-13 STOVER NUT
26	F-1009-02	14	5/16" FLAT WASHER
27	F-1125	10	5/16-18 LOCK NUT
28	707-033P	1	CLUTCH STOP
29	F-1015-02	4	1/4-20 X 5/8" GR. 5
30	F-1158	4	1/4-20 LOCK NUTS
31	D-3353	2	TIRE, 20x10-10, TURF (48" DECK)
-	D-3787	2	TIRE, 20x12-10, TURF (52" DECK)

ITEM #	PART #	QTY	DESCRIPTION
32	F-1499	8	LUG NUT, 1/2 X 20
33	707-036P	1	BRACE, TRANSMISSION
34	659-350P	2	HYDRO MOUNT BRACE
35	F-2127	4	FHCS, 1/2-13 X 1-1/4" GR5
36	F-2145	2	5/16-18 X 6" BOLT GR8
37	F-2120	1	FHCS, 1/2-13 X 1-1/4" GR5
38	659-173P	1	HYDRO BRACE
39	F-1544	4	5/16-18 X 3" BOLT
40	707-061P	2	FAN SHROUD
41	F-1009-03	2	3/8" FLAT WASHER
42	F-1005-03	1	3/8-16 LOCK NUT
43	F-1820	2	5/16-18 x 2-1/4" CAPSCREW
44	F-1492	2	5/16-3/8 RUE RING
45	F-1015-15	1	5/16-18 x 1" CAPSCREW
48	F-1307	4	3/8-16 x 1-1/4" CAPSCREW
49	F-1019-03	4	3/8" LOCK WASHER
50	647-085P	1	GROUND STRAP
51	H-2762	1	VENT TUBE ADAPTER
52	F-2043	1	SPACER
53	H-2567	2	TRANSAXLE OIL FILTER
54	H-2535	4	HOSE CLAMP
55	H-2549	1	HOSE 5" LONG
56	D-3791	2	SMALL HYDRO TANK
57	659-092P	2	WHEEL BACKING PLATE
58	H-2517	1	VENT TUBE ADAPTER
59	H-2761	1	HOSE, 1/2" x 19"

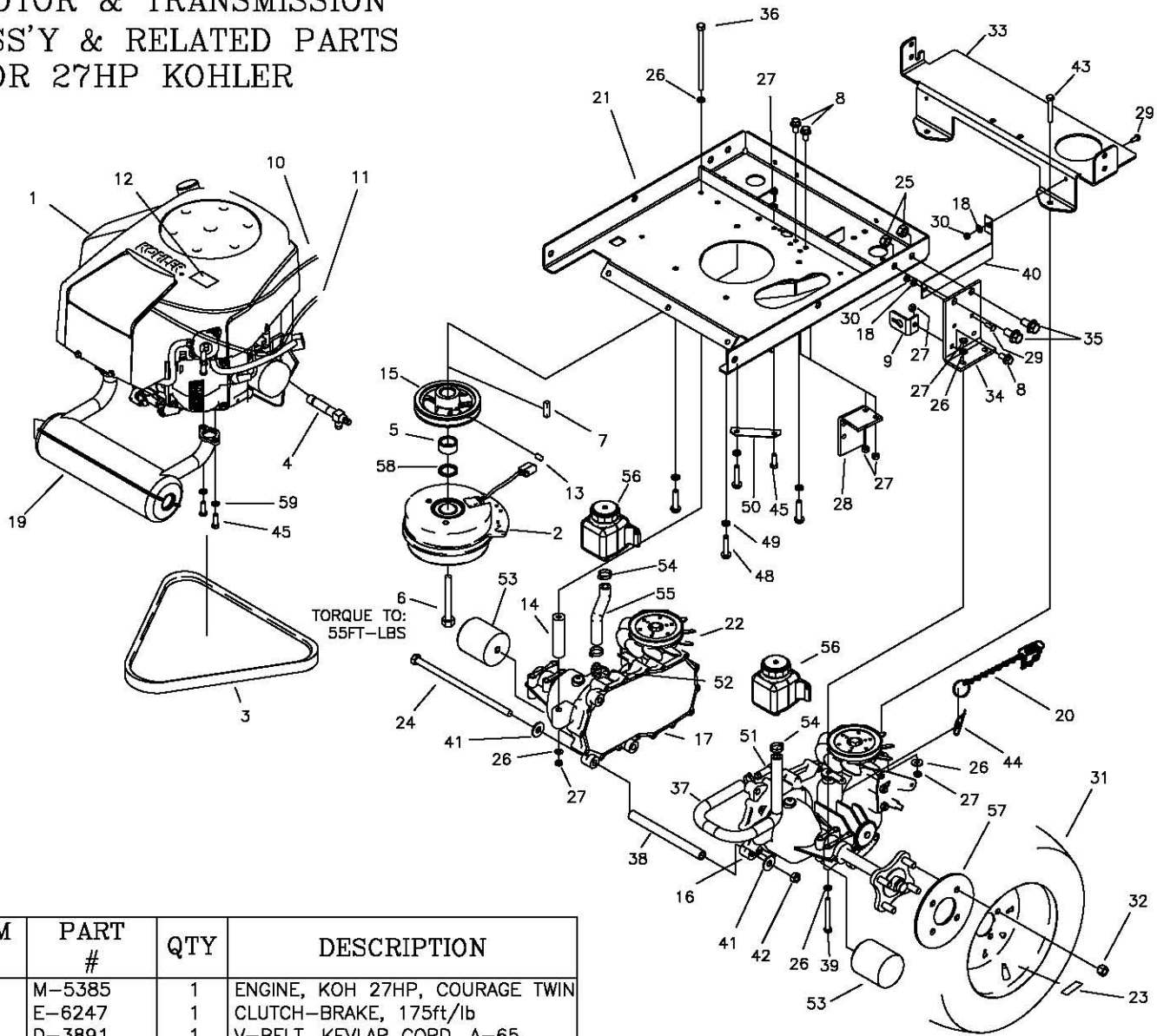
# MOTOR & TRANSMISSION ASS'Y & RELATED PARTS FOR 24HP KAWASAKI



ITEM #	PART #	QTY	DESCRIPTION
1	M-5394	1	ENGINE, KAW 24HP, FR730 TWIN
2	E-6247	1	CLUTCH-BRAKE, 175ft/lb
3	D-3891	1	V-BELT, KEVLAR CORD, A-65
4	H-2590	1	OIL DRAIN VALVE
5	E-6307	1	OIL PRESSURE SWITCH
6	F-2113	1	7/16-20x2-1/2" CAPSCREW, GR8
7	621-113P	1	KEY, 1/4 SQ. X 1-1/4"
8	F-2120	4	FHCS, 5/16-18 X 3/4" BOLT GR5
9	659-119P	2	FREE WHEEL ANCHOR
10	H-2287	1	CHOKE CABLE
11	H-2610	1	THROTTLE CABLE
12	P-10077-11	1	DECAL, "CLEAN"
13	F-1228	1	SETSCREW, 1/4" X 1/4"
14	659-121P	2	REAR HYDRO BRACE
15	659-154P	1	MOTOR PULLEY
16	D-3886-01	1	TRANSAXLE, RH, ZT-2800
17	D-3886-02	1	TRANSAXLE, LH, ZT-2800
18	F-1009-01	4	1/4" FLAT WASHER
19	H-2750	1	MUFFLER, KAWASAKI
20	707-074P	2	FREEWHEEL CHAIN W/SPRING
21	700-107W	1	MOTOR MOUNT
22	H-2539	2	FAN BLADE REPLACEMENT
23	P-11384	2	DECAL, TIRE PRESSURE, 12 PSI
24	F-2007	1	3/8-16 X 12-1/2" HEX BOLT
25	F-1005-05	4	1/2-13 STOVER NUT
26	F-1009-02	14	5/16" FLAT WASHER
27	F-1125	10	5/16-18 LOCK NUT
28	700-026P	1	CLUTCH STOP
29	F-1015-02	4	1/4-20 X 5/8" GR. 5

ITEM #	PART #	QTY	DESCRIPTION
30	F-1158	4	1/4-20 LOCK NUTS
31	D-3787	2	TIRE, 20x12-10, TURF
32	F-1499	8	LUG NUT, 1/2 X 20
33	707-036P	1	BRACE, TRANSMISSION
34	659-350P	2	HYDRO MOUNT BRACE
35	F-2127	4	FHCS, 1/2-13 X 1-1/4" GR5
36	F-2145	2	5/16-18 X 6" BOLT GR8
37	H-2761	1	HOSE, 1/2" X 19"
38	659-173P	1	HYDRO BRACE
39	F-1544	4	5/16-18 X 3" BOLT
40	707-061P	2	FAN SHROUD
41	F-1009-03	2	3/8" FLAT WASHER
42	F-1005-03	1	3/8-16 LOCK NUT
43	F-1820	2	5/16-18 X 2-1/4" CAPSCREW
44	F-1492	2	5/16-3/8 RUE RING
45	F-1015-15	1	5/16-18 X 1" CAPSCREW
48	F-1307	4	3/8-16 X 1-1/4" CAPSCREW
49	F-1019-03	4	3/8" LOCK WASHER
50	647-085P	1	GROUND STRAP
51	H-2762	1	VENT TUBE ADAPTER
52	H-2517	1	VENT TUBE ADAPTER
53	H-2567	2	TRANSAXLE OIL FILTER
54	H-2535	4	HOSE CLAMP
55	H-2549	1	HOSE 5" LONG
56	D-3791	2	SMALL HYDRO TANK
57	659-092P	2	WHEEL BACKING PLATE

# MOTOR & TRANSMISSION ASS'Y & RELATED PARTS FOR 27HP KOHLER



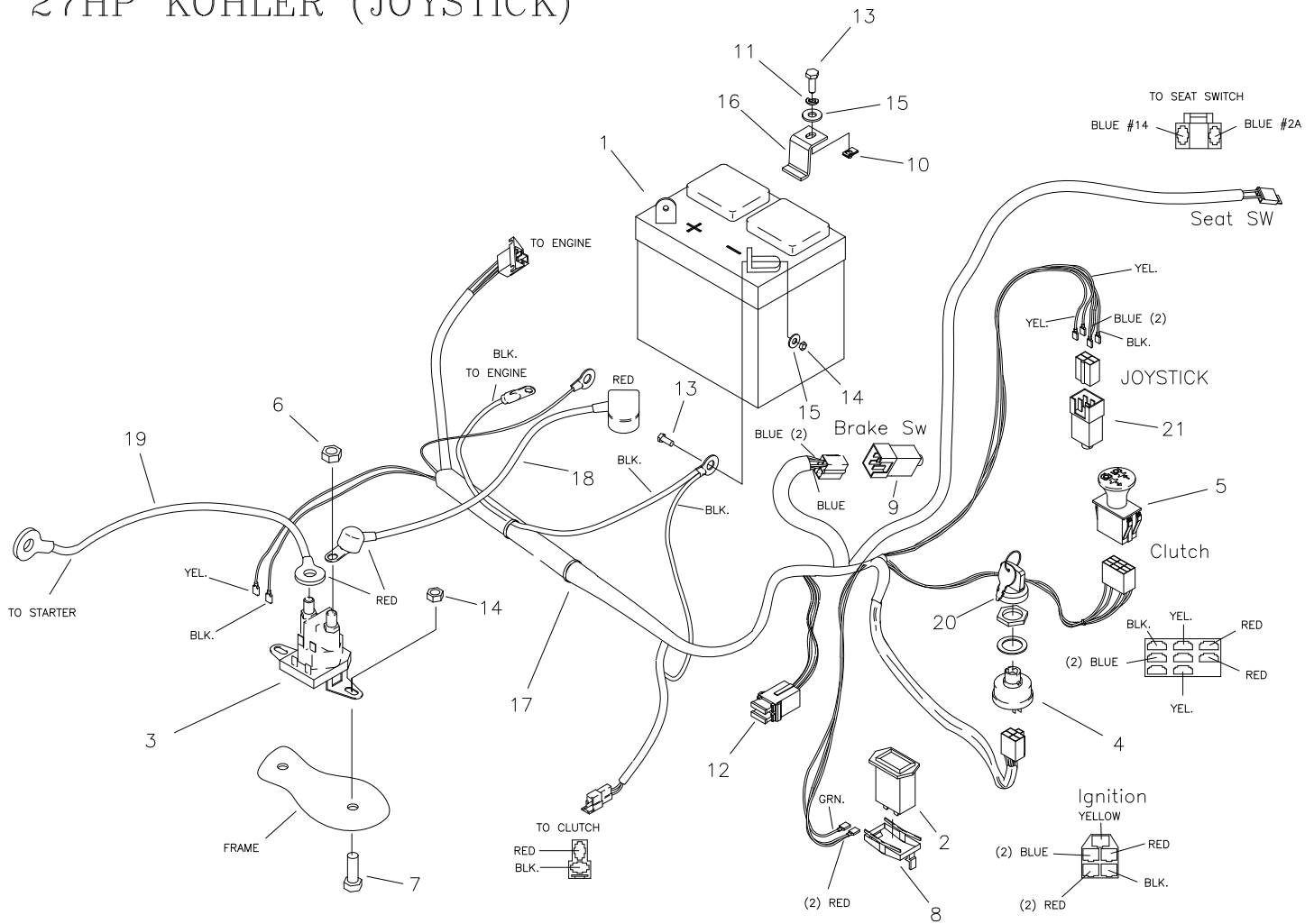
TORQUE TO:  
55FT-LBS

ITEM #	PART #	QTY	DESCRIPTION
1	M-5385	1	ENGINE, KOH 27HP, COURAGE TWIN
2	E-6247	1	CLUTCH-BRAKE, 175ft/lb
3	D-3891	1	V-BELT, KEVLAR CORD, A-65
4	H-2589	1	OIL DRAIN VALVE
5	F-2043	1	SPACER, ENGINE PULLEY
6	F-2113	1	7/16-20x2-1/2" CAPSCREW, GR8
7	621-113P	1	KEY, 1/4 SQ. X 1-1/4"
8	F-2120	4	FHCS, 5/16-18 X 3/4" BOLT GR5
9	659-119P	2	FREE WHEEL ANCHOR
10	H-2404	1	CHOKE CABLE
11	H-2610	1	THROTTLE CABLE
12	P-10077-11	1	DECAL, "CLEAN"
13	F-1228	1	SETSCREW, 1/4" X 1/4"
14	659-121P	2	REAR HYDRO BRACE
15	659-154P	1	MOTOR PULLEY
16	D-3886-01	1	TRANSAXLE, RH, ZT-2800
17	D-3886-02	1	TRANSAXLE, LH, ZT-2800
18	F-1009-01	4	1/4" FLAT WASHER
19	H-2751	1	MUFFLER, KOH TWIN, LOW MOUNT
20	707-074P	2	FREEWHEEL CHAIN W/SPRING
21	700-107W	1	MOTOR MOUNT
22	H-2539	2	FAN BLADE REPLACEMENT
23	P-11384	2	DECAL, TIRE PRESSURE, 12 PSI
24	F-2007	1	3/8-16 X 12-1/2" HEX BOLT
25	F-1005-05	4	1/2-13 STOVER NUT
26	F-1009-02	14	5/16" FLAT WASHER
27	F-1125	10	5/16-18 LOCK NUT
28	700-026P	1	CLUTCH STOP
29	F-1015-02	4	1/4-20 X 5/8" GR. 5
30	F-1158	4	1/4-20 LOCK NUTS
31	D-3787	2	TIRE, 20x12-10, TURF
32	F-1499	8	LUG NUT, 1/2 X 20
33	707-036P	1	BRACE, TRANSMISSION

ITEM #	PART #	QTY	DESCRIPTION
34	659-350P	2	HYDRO MOUNT BRACE
35	F-2127	4	FHCS, 1/2-13 X 1-1/4" GR5
36	F-2145	2	5/16-18 X 6" BOLT GR8
37	H-2761	1	HOSE, 1/2" x 19"
38	659-173P	1	HYDRO BRACE
39	F-1544	4	5/16-18 X 3" BOLT
40	707-061P	2	FAN SHROUD
41	F-1009-03	2	3/8" FLAT WASHER
42	F-1005-03	1	3/8-16 LOCK NUT
43	F-1820	2	5/16-18 x 2-1/4" CAPSCREW
44	F-1492	2	5/16-3/8 RUE RING
45	F-1015-15	5	5/16-18 x 1" CAPSCREW
48	F-1307	4	3/8-16 x 1-1/4" CAPSCREW
49	F-1019-03	4	3/8" LOCK WASHER
50	647-085P	1	GROUND STRAP
51	H-2762	1	VENT TUBE ADAPTER
52	H-2517	1	VENT TUBE ADAPTER
53	H-2567	2	TRANSAXLE OIL FILTER
54	H-2535	4	HOSE CLAMP
55	H-2549	1	HOSE 5" LONG
56	D-3791	2	SMALL HYDRO TANK
57	659-092P	2	WHEEL BACKING PLATE
58	611-143P	1	10GA WASHER
59	F-1019-02	4	5/16" LOCK WASHER

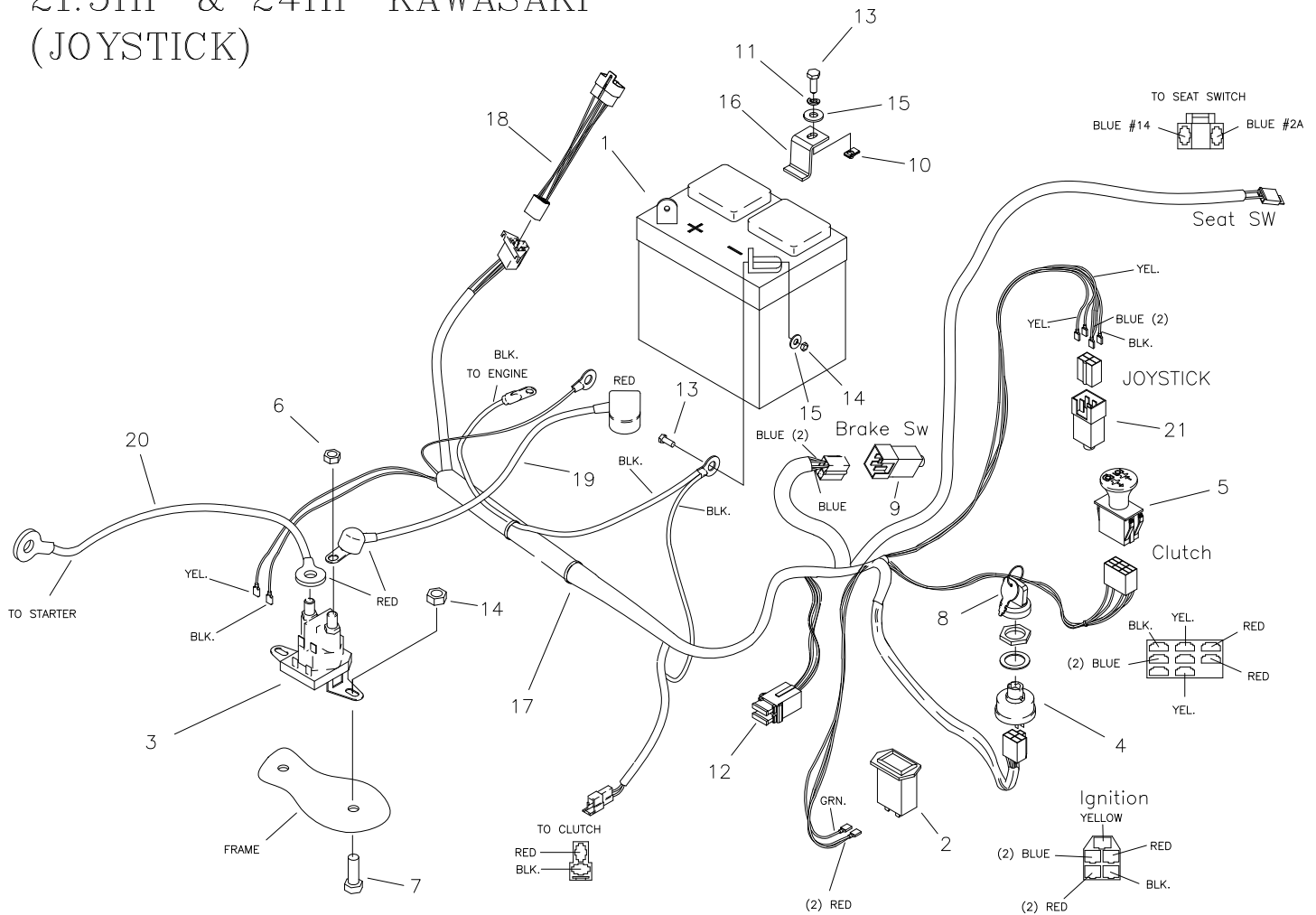


# E-6405 WIRE HARNESS & RELATED PARTS FOR 27HP KOHLER (JOYSTICK)



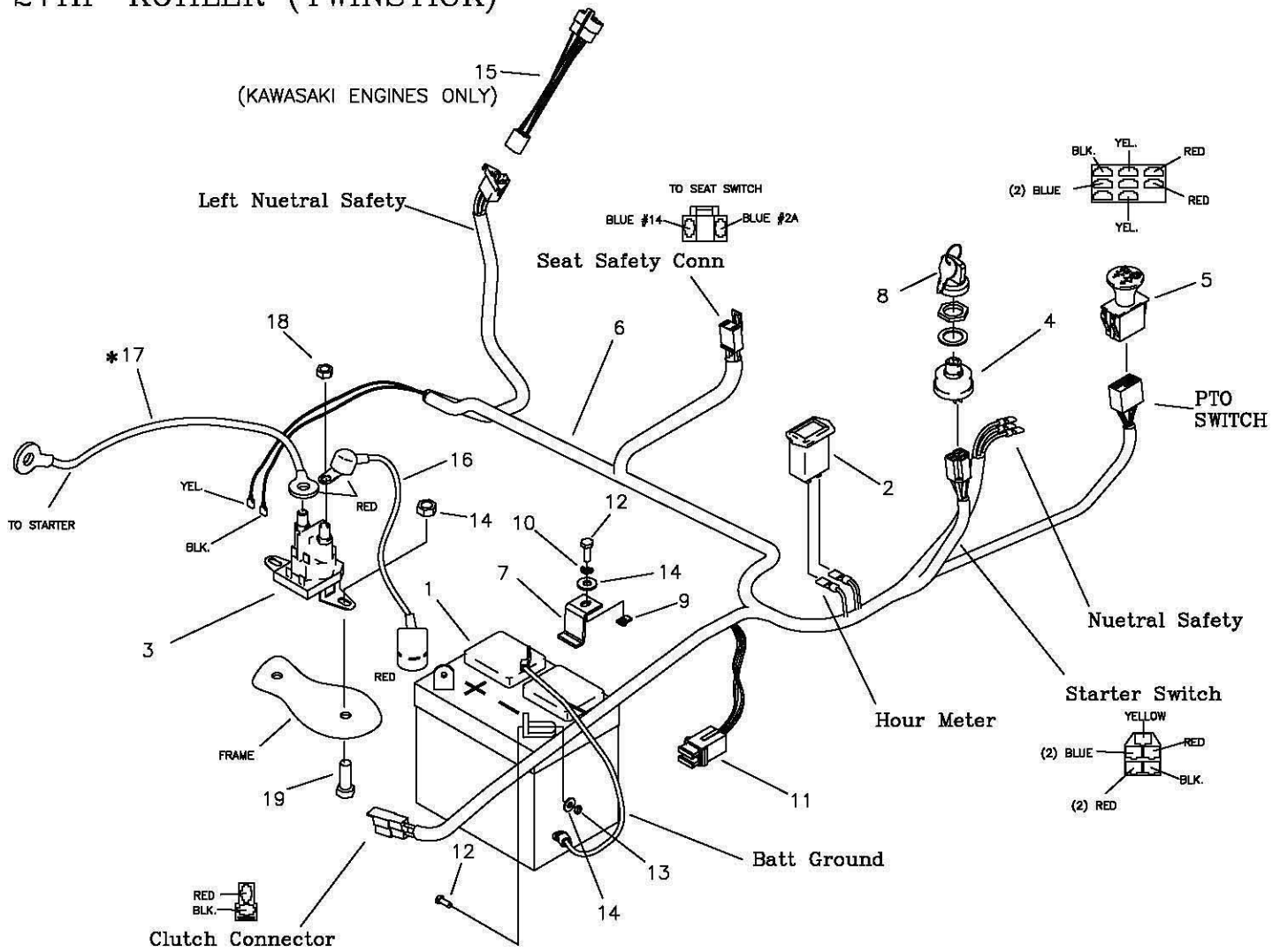
ITEM #	PART #	QTY	DESCRIPTION
1	E-6271	1	BATTERY
2	E-5878	1	HOUR METER
3	E-6054	1	SOLENOID
4	E-5873	1	START SWITCH
5	E-6403	1	CLUTCH SWITCH
6	F-1011-01	2	1/4-20 NUT
7	F-1015-02	2	1/4-20 x 5/8" CAPSCREW
8	E-6369	1	RETAINER CLIP
9	E-6297	1	BRAKE SWITCH
10	F-1858	1	1/4-20 U-NUT
11	F-1019-01	1	1/4" LOCK WASHER
12	E-6207	2	FUSE, #ATC-30
13	F-1538	3	1/4-20 x 3/4" CAPSCREW
14	F-1158	5	1/4-20 STOVER NUT
15	F-1009-01	5	1/4" FLAT WASHER
16	659-137P	1	BATTERY HOLD DOWN
17	E-6405	1	WIRE HARNESS
18	E-6418	1	CABLE, BATTERY TO SOLENOID
19	E-6419	1	CABLE, SOLENOID TO ENGINE
20	E-6445	1	KEY, SET
21	E-6474	1	JOYSTICK SWITCH
-NOT SHOWN-			
	E-6374	1	SEAT SWITCH

# E-6415 WIRE HARNESS & RELATED PARTS FOR 21.5HP & 24HP KAWASAKI (JOYSTICK)



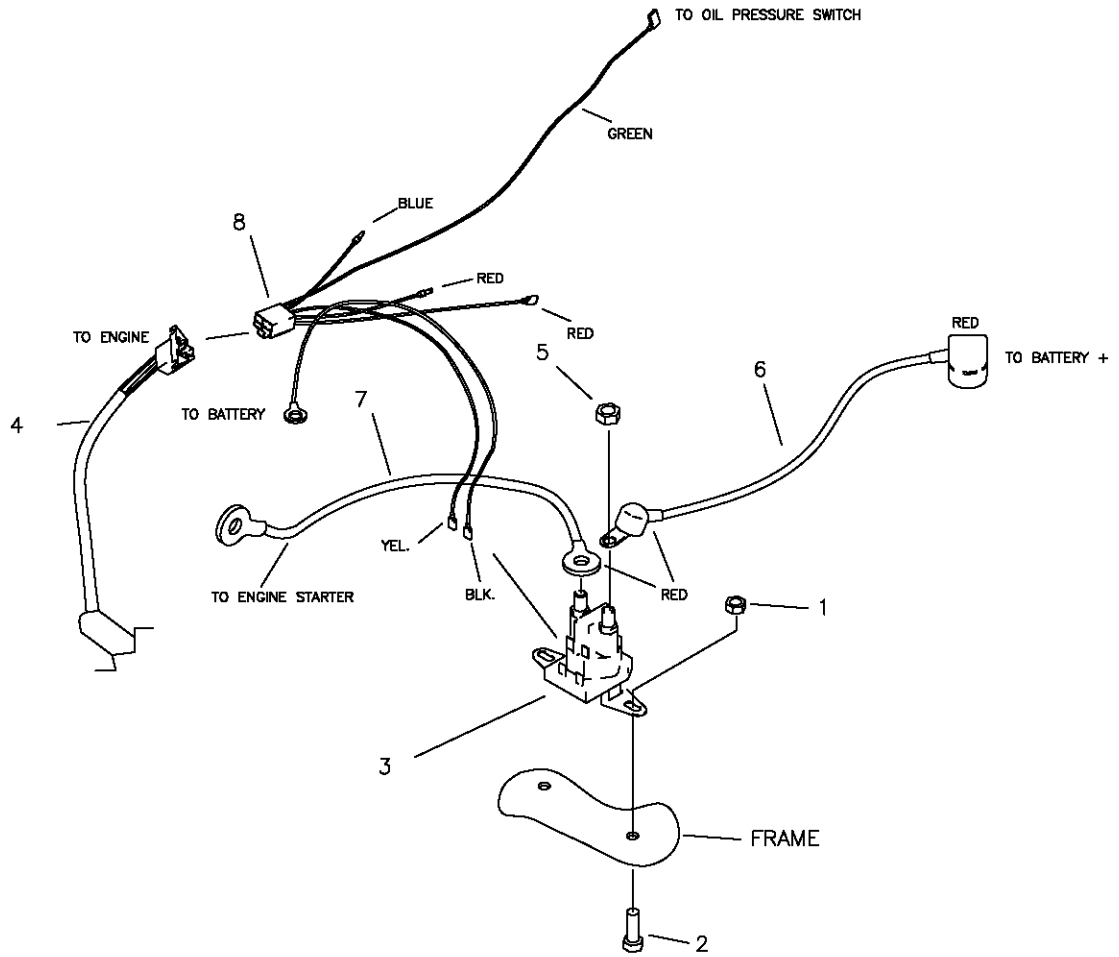
ITEM #	PART #	QTY	DESCRIPTION
1	E-6271	1	BATTERY
2	E-5878	1	HOUR METER
3	E-6054	1	SOLENOID
4	E-5873	1	START SWITCH
5	E-6403	1	CLUTCH SWITCH
6	F-1011-01	2	1/4-20 NUT
7	F-1015-02	2	1/4-20 x 5/8" CAPSCREW
8	E-6445	1	KEY, SET
9	E-6297	1	BRAKE SWITCH
10	F-1858	1	1/4-20 U-NUT
11	F-1019-01	1	1/4" LOCK WASHER
12	E-6207	2	FUSE, #ATC-30
13	F-1538	3	1/4-20 x 3/4" CAPSCREW
14	F-1158	5	1/4-20 STOVER NUT
15	F-1009-01	5	1/4" FLAT WASHER
16	659-137P	1	BATTERY HOLD DOWN
17	E-6415	1	WIRE HARNESS
18	E-6417	1	WIRE HARNESS ADAPTER
19	E-6418	1	CABLE, BATTERY TO SOLENOID
20	E-6419	1	CABLE, SOLENOID TO ENGINE
21	E-6474	1	JOYSTICK SWITCH
-NOT SHOWN-			
	E-6374	1	SEAT SWITCH

# E-6416 WIRE HARNESS & RELATED PARTS FOR 21.5HP & 24HP KAWASAKI, 27HP KOHLER (TWINSTICK)



ITEM #	PART #	QTY	DESCRIPTION
1	E-6271	1	BATTERY
2	E-5878	1	HOUR METER
3	E-6054	1	SOLENOID
4	E-5873	1	START SWITCH
5	E-6403	1	CLUTCH SWITCH
6	E-6416	1	WIRE HARNESS
7	659-137P	1	BATTERY HOLD DOWN
8	E-6445	1	KEY, SET
9	F-1858	1	1/4-20 U-NUT
10	F-1019-01	1	1/4" LOCK WASHER
11	E-6207	2	FUSE, #ATC-30
12	F-1538	3	1/4-20 x 3/4" CAPSCREW
13	F-1158	2	1/4-20 STOVER NUT
14	F-1009-01	3	1/4" FLAT WASHER
15	E-6417	1	KAWASAKI HARNESS ADAPTER
16	E-6418	1	CABLE, BATTERY TO SOLENOID
17	E-6419	1	CABLE, SOLENOID TO ENGINE
18	F-1011-01	2	1/4-20 NUT
19	F-1015-02	2	1/4-20 x 5/8" CAPSCREW
-NOT SHOWN-			
	E-6374	1	SEAT SWITCH

E-6417 WIRE HARNESS ADAPTER  
 & RELATED PARTS FOR  
 21.5HP & 24HP KAWASAKI



ITEM #	PART #	QTY	DESCRIPTION
1	F-1158	2	1/4-20 STOVER NUT
2	F-1015-02	2	1/4-20 x 5/8" CAPSCREW
3	E-6054	1	SOLENOID
4	E-6415	1	WIRE HARNESS (JOYSTICK)
-	E-6416	1	WIRE HARNESS (TWINSTICK)
5	F-1011-01	2	1/4-20 NUT
6	E-6418	1	CABLE, BATTERY TO SOLENOID
7	E-6419	1	CABLE, SOLENOID TO ENGINE
8	E-6417	1	KAWASAKI HARNESS ADAPTER