

REPAIR PARTS MANUAL
FOR

COUNTRY
CLIPPER

DEFENDER

SR-1500

COUNTRY CLIPPER

DEFENDER

SR-1500

ZERO TURN RADIUS MOWER

TABLE OF CONTENTS

SECTION 1 – MOWER DECKS AND RELATED PARTS

1. 60" DECK ASSEMBLY
2. 72" DECK ASSEMBLY
3. DECK SPINDLE ASSEMBLY
4. CHUTE ASSEMBLY
5. LIFT HANDLE ASSEMBLY & RELATED PARTS
6. QUICK RELEASE SYSTEM (QRS) PARTS - 60" & 72" DECKS

SECTION 2 – TRACTOR FRAME AND RELATED PARTS

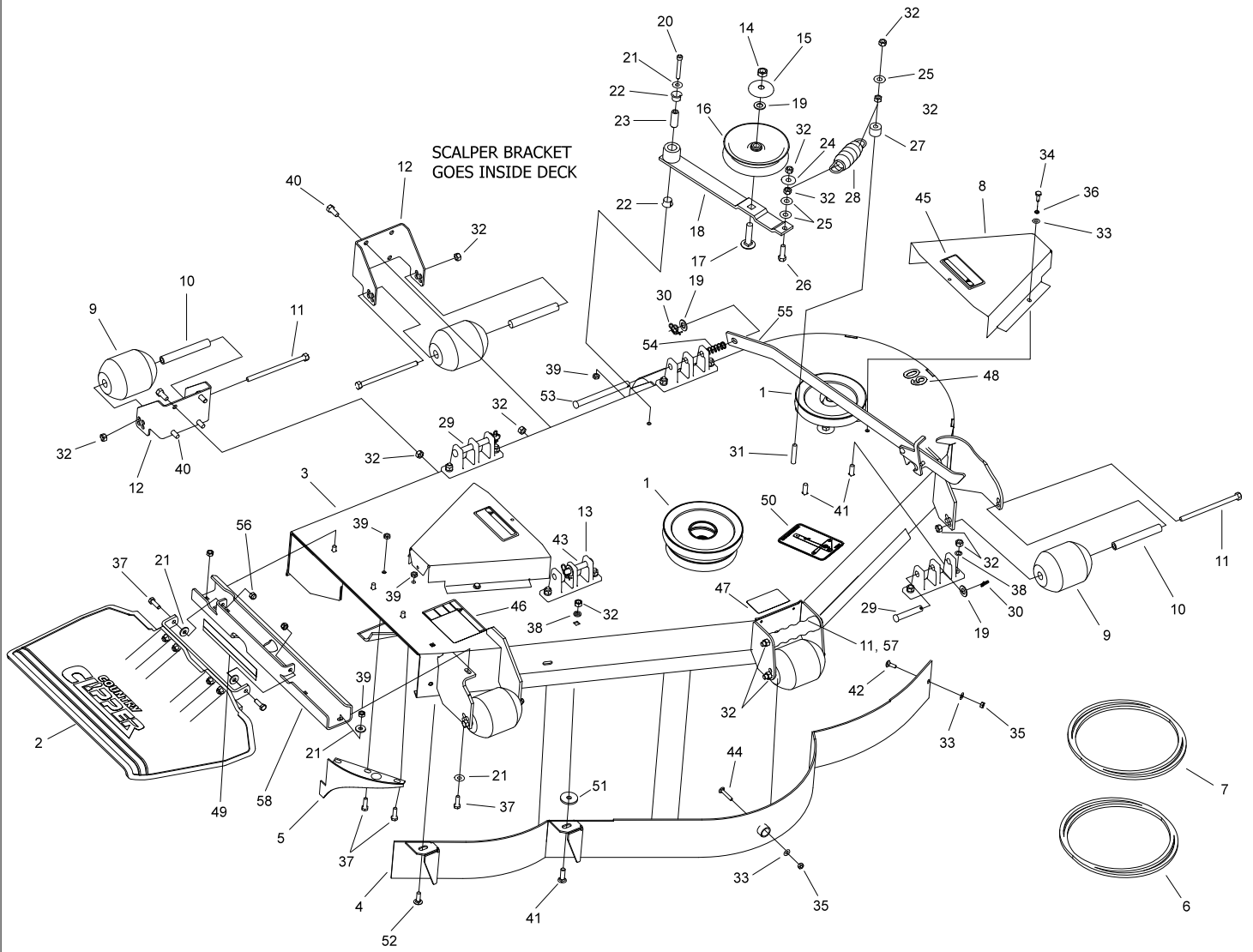
7. LIFT ASSEMBLY & RELATED PARTS - 60" DECK
8. LIFT ASSEMBLY & RELATED PARTS - 72" DECK
9. STEP & RELATED PARTS
10. DOUBLE IDLER & RELATED PARTS
11. ANTI-ROTATING CASTER WHEEL & RELATED PARTS
12. FRAME SIDES & RELATED PARTS
13. FRAME SIDES & RELATED PARTS (CONT)
14. FRAME SIDES & RELATED PARTS (CONT)
15. FENDER ASSEMBLY
16. SEAT FRAMING & RELATED PARTS
17. SEAT FRAMING & RELATED PARTS (CON'T)
18. R.O.P.S. ASSEMBLY (ROLL OVER PROTECTION SYSTEM) & RELATED PARTS

SECTION 3 – TRACTOR DRIVE AND RELATED PARTS

19. FUEL TANK ASSEMBLY
20. JOYSTICK & RELATED PARTS (RIGHT SIDE)
21. JOYSTICK & RELATED PARTS (LEFT SIDE)
22. JOYSTICK ASSEMBLY
23. TWIN STICK STEERING CONTROL & RELATED PART
24. PARKING BRAKE & RELATED PARTS
25. TRANSMISSION & RELATED PARTS
26. HYDRO IDLER & RELATED PARTS
27. ENGINE & RELATED PARTS
28. WIRE HARNESS & RELATED PARTS (JOYSTICK)
29. WIRE HARNESS & RELATED PARTS (TWINSTICK)
30. JACK ASSEMBLY

60" DECK ASSEMBLY

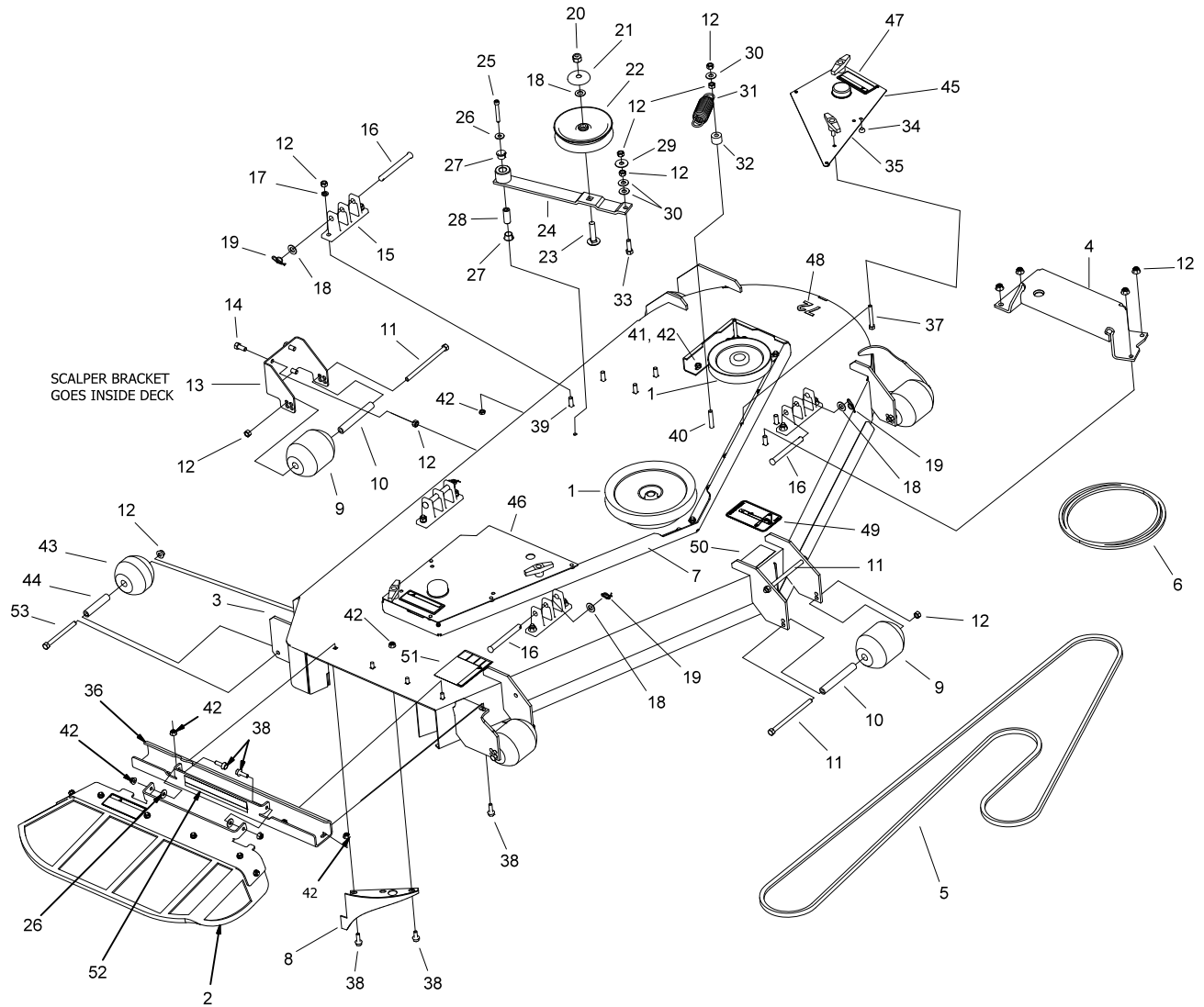
643X-002A



ITEM	PART #	QTY.	DESCRIPTION	ITEM	PART #	QTY.	DESCRIPTION
1	XXX-XXXX	3	SPINDLE ASSEMBLY - SEE PAGE 3	30	H-2239	4	1/2 RUE RING
2	643-111A	1	CHUTE ASSEMBLY, SMALL	31	F-1268	1	3/8-16 X 2-1/4 CAPSCREW
3	643-130A	1	60" DECK w/DECALS	32	F-1005-03	32	3/8-16 LOCKNUT
4	643-104W	1	60" DUST BAFFLE	33	F-1009-01	6	1/4 FLAT WASHER
5	686-006W	1	SPLITTER BAFFLE	34	F-1538	4	1/4-20 X 3/4 CAPSCREW
6	D-3796	1	60" DECK BELT - B124	35	F-1158	2	1/4-20 LOCKNUT
7	D-3901	1	60" ENGINE TO DECK BELT - B112	36	F-1019-01	4	1/4 LOCKWASHER
8	668-061A	2	PULLEY COVER w/DECALS	37	F-1015-15	3	5/16-18 X 1 CAPSCREW
9	H-1948	6	ROLLER, 3-3/4 DIA. X 4-13/16 L	38	F-1019-03	8	3/8 LOCKWASHER
10	609-183P	6	BUSHING	39	F-1125	4	5/16-18 LOCKNUT
11	F-2161	7	FHCS, 3/8-16 x 6", YZ, GR5	40	F-1558	12	3/8-16 X 7/8 CAPSCREW
12	637-006P	3	SCALPER BRACKET	41	F-1672	9	3/8-16 X 1-1/4" CARRIAGE BOLT
13	643-016W	4	HANGER WELDMENT	42	F-1823	1	1/4 X 3/4" CARRIAGE BOLT
14	F-1378	1	1/2-13 NYLOC NUT	43	F-1889	1	1/2 X 2-5/8 CLEVIS PIN
15	620-201P	1	WASHER, BEARING CAP	44	F-1935	1	1/4 X 1-1/2 CARRIAGE BOLT
16	D-3904	1	IDLER PULLEY, 5"	45	P-10935	2	DECAL, WARNING
17	F-1822	1	1/2-13 X 2-1/4 CARRIAGE BOLT	46	P-10941	1	DECAL, "DANGER ROTATING BLADES"
18	643-079A	1	SINGLE IDLER, ASS'Y	47	P-11413	1	DECAL, HOIST POINT
19	F-1521	5	1/2 WASHER, CUSTOM	48	P-11952	1	DECAL, DECK SIZE 60
20	F-1800	1	5/16-18 SHSC 2-1/4	49	P-12496	1	DECAL, MISSING CHUTE
21	F-1009-02	3	5/16 FLAT WASHER	50	P-11935	1	DECAL, BELT ROUTING
22	D-3730	2	BUSHING, TEFLON COATED (PART OF 643-079A)	51	609-034P	1	SPINDLE SPACER WASHER
23	621-103P	1	PIN (PART OF 643-079A)	52	F-1269	1	5/16-18x1" CARRIAGE BOLT
24	F-2083	1	WASHER, 3/8 FENDER	53	H-2718	1	1/2"x5-1/2" CLEVIS PIN
25	F-1009-03	3	3/8 FLAT WASHER	54	F-2575	1	SPRING
26	F-1015-27	1	3/8-16 X 1-1/2 CAPSCREW	55	625-114A	1	DECK PROP ASS'Y, PIVOT FRONT END
27	668-045P	1	SPACER, SPRING MTG	56	F-1005-02	2	3/8-18 NYLOC NUT
28	H-2619	1	SPRING, 5 X 1-1/2, TAPERED ENDS	57	H-2787	1	GRIP, DECK HANDLE
29	H-2240	2	1/2 X 4-1/2 CLEVIS PIN	58	643-135A	1	OUTLET STIFFENER w/DECALS, SMALL

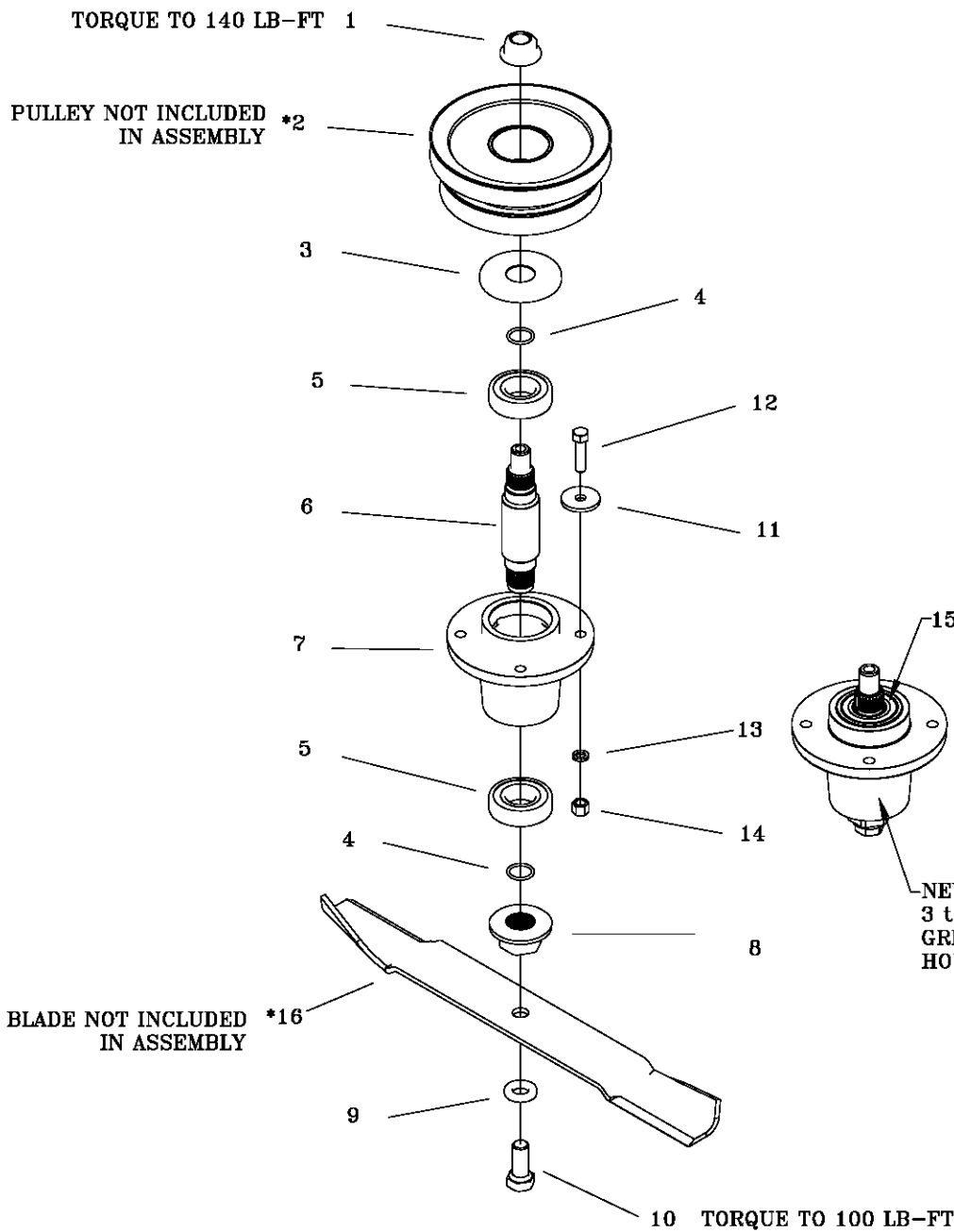
72" DECK ASSEMBLY

643Z-002A



ITEM	PART #	QTY.	DESCRIPTION	ITEM	PART #	QTY.	DESCRIPTION
1	XXX-XXXX	3	SPINDLE ASSEMBLY - SEE PAGE 3	28	621-103P	1	PIN (PART OF 643-079A)
2	660-125A	1	RUBBER CHUTE ASSEMBLY	29	F-2083	1	3/8 FENDER WASHER
3	643-131A	1	72" DECK w/DECALS	30	F-1009-03	3	3/8 FLAT WASHER
4	629-781W	1	JACK BASE WELDMENT	31	H-2619	1	SPRING, 5 X 1-1/2 TAPERED ENDS
5	D-3797	1	72" DECK BELT - B142	32	668-045P	1	SPACER, SPRING MTG
6	D-3902	1	72" ENGINE TO DECK BELT - B116	33	F-1015-27	1	3/8-16 X 1-1/2 CAPSCREW
7	643-068P	1	72" DECK TOP STIFFENER	34	H-2461	8	RUBBER BUMPER
8	686-006W	1	SPLITTER BAFFLE	35	F-1921	4	T HANDLE KNOB
9	H-1948	4	ROLLER, 3-3/4 DIA X 4-13/16 L	36	643-133A	1	OUTLET SIFFENER w/DECALS, LARGE
10	609-183P	4	BUSHING	37	F-1518	4	5/16-18 X 2-1/2 CAPSCREW
11	F-2161	5	FHCS, 3/8-16 X 6, YZ, GR5	38	F-2148	4	FHCS, 5/16-18 X 1
12	F-2152	27	NUT, 3/8-16 NYLOC, FLANGED	39	F-1872	8	3/8-16 X 1-1/4 CARRIAGE BOLT
13	637-006P	1	SCALPER BRACKET	40	F-2166	1	FHCS, 3/8-16 X 2
14	F-2124	4	FHCS, 3/8-16 X 3/4	41	F-1671	18	5/16-18 X 3/4 CARRIAGE BOLT
15	643-016W	4	HANGER WELDMENT	42	F-2063	26	NUT, 5/16-18 NYLOCK
16	H-2240	4	1/2 X 4-1/2 CLEVIS PIN	43	H-2772	2	ROLLER, 3-3/4 DIA X 3-1/4" LG
17	F-1019-03	8	3/8 LOCK WASHER	44	643-126P	2	BUSHING
18	F-1521	5	1/2 WASHER, CUSTOM	45	643-132A	1	72" PULLEY COVER ASSEMBLY, LEFT
19	H-2239	4	1/2 RUE RING	46	643-095A	1	72" PULLEY COVER ASSEMBLY, RIGHT
20	F-2152	1	NUT, 1/2-13, NYLOC FLANGED	47	P-10935	2	DECAL, WARNING
21	620-201P	1	WASHER, BEARING CAP	48	P-11953	1	DECAL, DECK SIZE 72
22	D-3904	1	5" IDLER PULLEY	49	P-11935	1	DECAL, BELT ROUTING
23	F-1822	1	1/2-13 X 2-1/4 CARRIAGE BOLT	50	P-11413	1	DECAL, HOIST POINT
24	643-079A	1	SINGLE IDLER ASS'Y	51	P-10941	1	DECAL, "DANGER ROTATING BLADES"
25	F-1800	1	5/16-18 SHSC 2-1/4	52	P-12496	1	DECAL, MISSING CHUTE
26	F-1009-02	3	5/16 FLAT WASHER	53	F-2160	2	FHCS, 3/8-16 x 4-1/2", YZ, GR5
27	D-3730	2	BUSHING, TEFLON COATED (PART OF 643-079A)				

DECK SPINDLE ASSEMBLY 629FN-001A

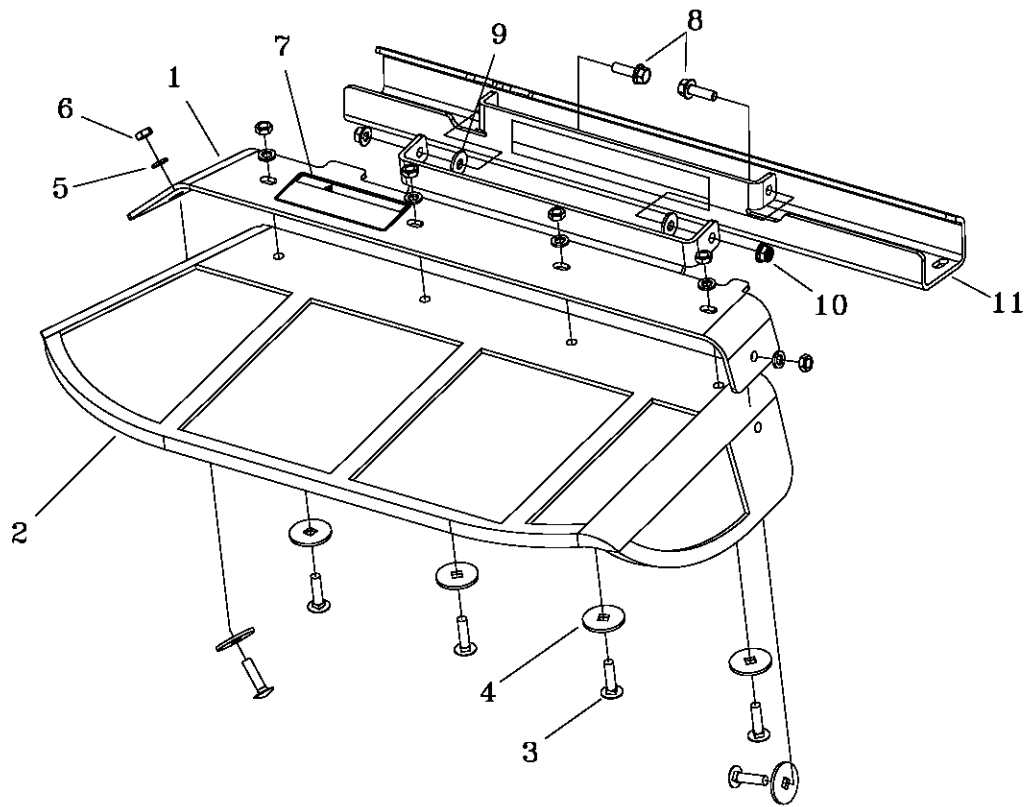


15 (APPLY THIN LAYER OF CHEVRON RYKOTAC GREASE TO THE TOP SURFACES OF THE BEARING AND HOUSING PRIOR TO INSTALLING ITEM #3 (BEARING CAP).

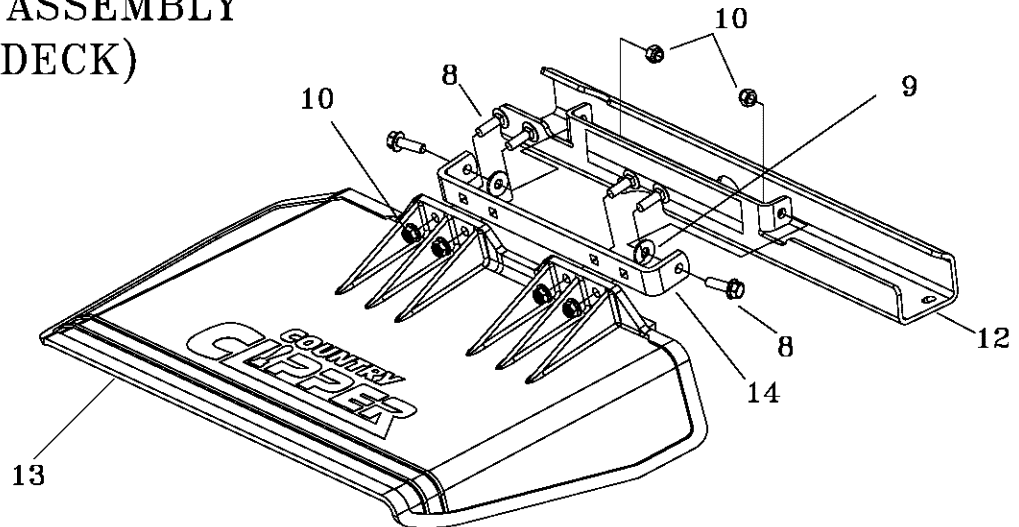
NEW MOWERS ARE SHIPPED WITH 3 to 4 oz OF CHEVRON SRI NLGI 2 GREASE INSIDE EACH SPINDLE HOUSING.

ITEM	PART #	QTY.	DESCRIPTION	ITEM	PART #	QTY.	DESCRIPTION
1	F-2078	1	3/4-6 TOP LOCK NUT	15	H-2707	1	GREASE PACKET
2	668-043P	*	60" DECK CENTER PULLEY (SHOWN)	16	H-2649	*	FUSION, HL 60" DECK (SHOWN)
*	668-044P	*	72" DECK CENTER PULLEY	*	H-2655	*	BLADE, HL 60" DECK
*	668-042P	*	60" & 72" DECK OUTSIDE PULLEY	*	H-2661	*	BLADE, LL 60" DECK
3	609-292P	1	CAP, BEARING	*	H-2667	*	BLADE, GATOR 60" DECK
4	H-2639	2	O'RING, RUBBER	*	H-2650	*	FUSION, HL 72" DECK
5	D-3867	2	BEARING, #6206	*	H-2656	*	BLADE, HL 72" DECK
6	609-289P	1	SHAFT, SPINDLE	*	H-2662	*	BLADE, LL 72" DECK
7	609-285P	1	HOUSING, SPINDLE				
8	609-288P	1	BLADE DRIVER				HL = HIGH LIFT
9	660-099P	1	BLADE WASHER				LL = LOW LIFT
10	F-2073	1	5/8-11 X 1.5 HHCS GR. 8				
11	609-034P	4	SPINDLE SPACER, WASHER				
12	F-1572	4	3/8-24 X 1.5 CAP SCREW				
13	F-1019-03	4	3/8 LOCK WASHER				
14	F-1573	4	3/8-24 LOCK NUT				

RUBBER CHUTE ASSEMBLY 660-125A (72" DECK)

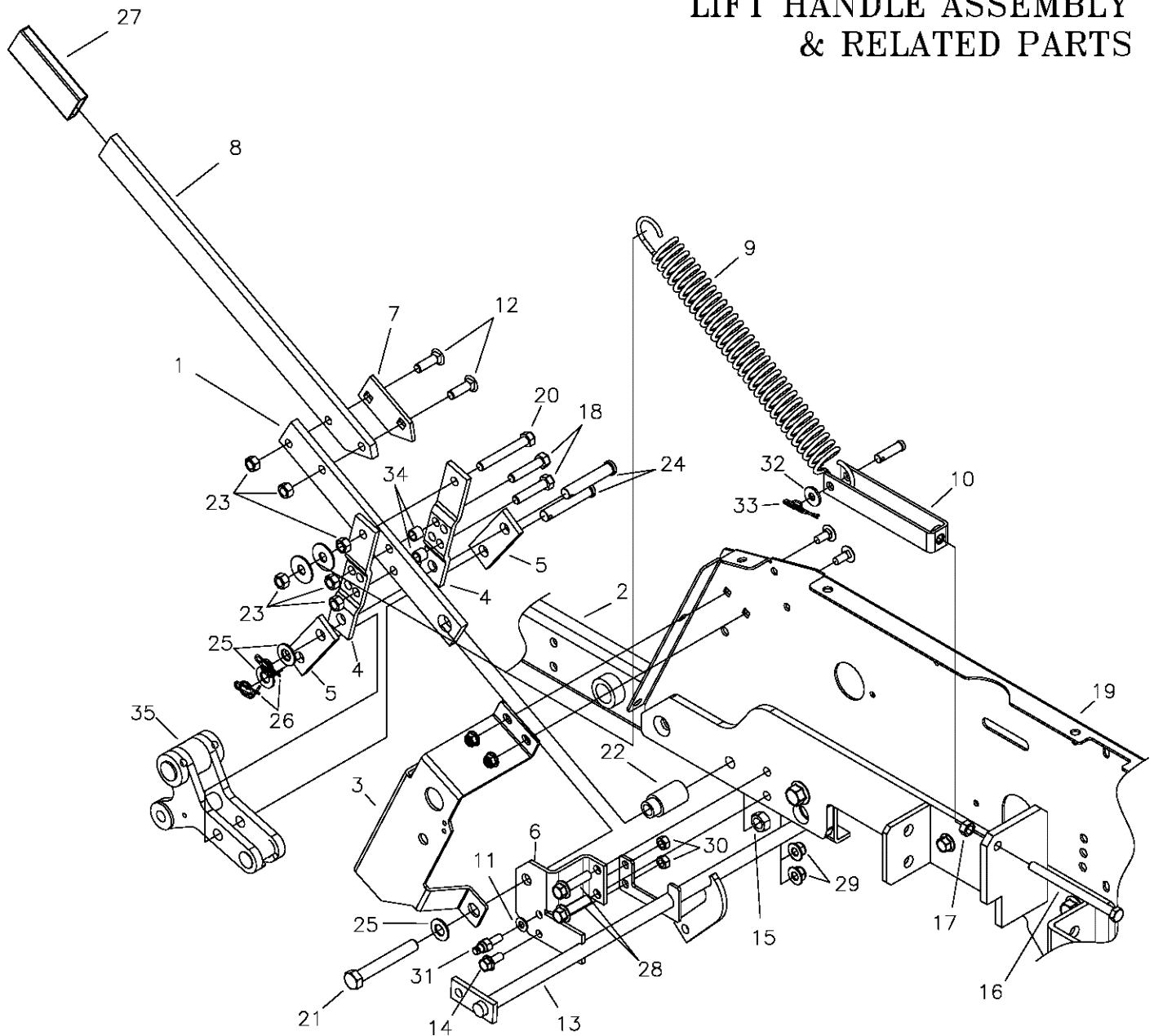


MOLDED CHUTE ASSEMBLY 643-111A (60" DECK)



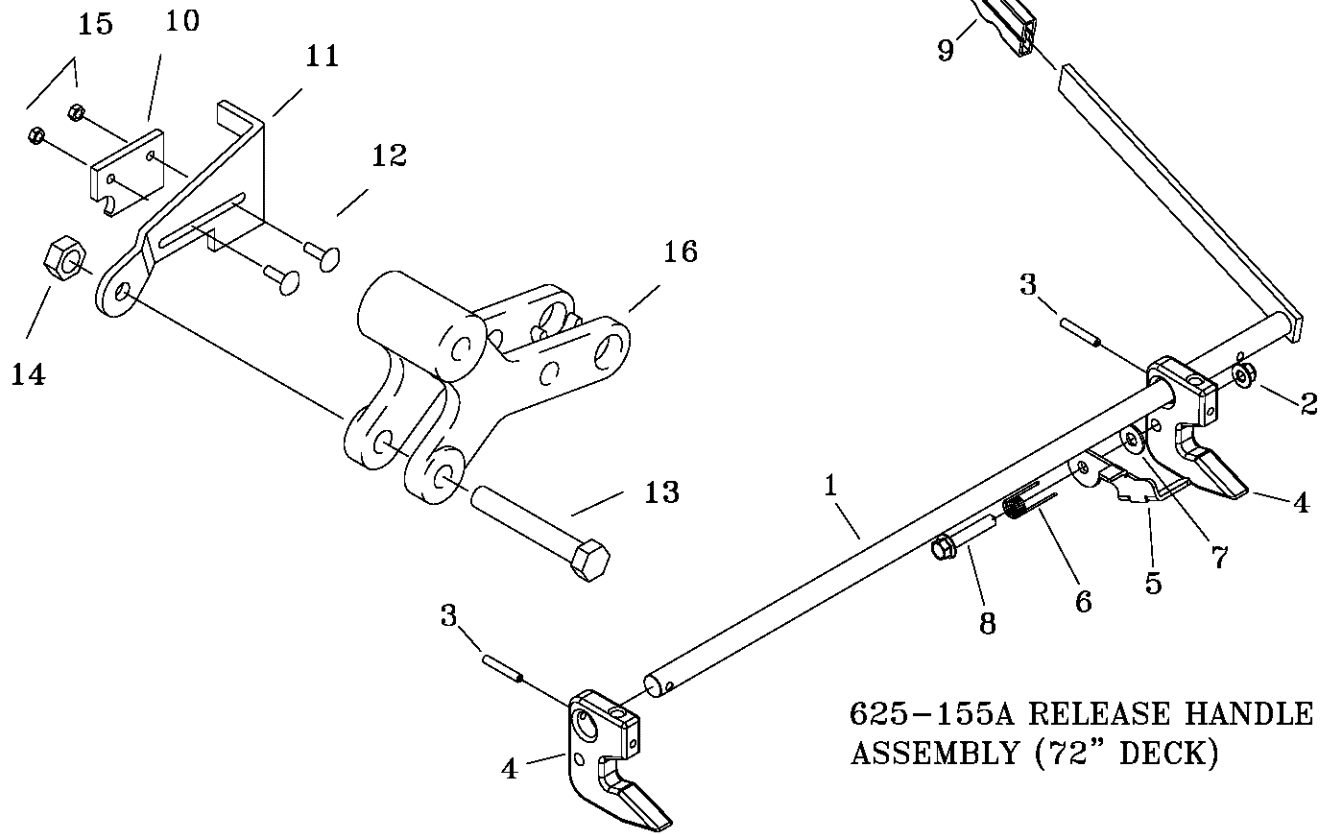
ITEM	PART #	QTY.	DESCRIPTION
1	643-134A	1	CHUTE FRAME w/DECALS, LG.
2	H-2683	1	RUBBER CHUTE, LG.
3	F-1106	6	5/16-18 X 1-1/4 CARRIAGE BOLT
4	660-130P	6	RUBBER CHUTE WASHER
5	F-1019-02	6	5/16 LOCK WASHER
6	F-1011-02	6	5/16-18 NUT
7	P-12706	1	WARNING DECAL, DISCHARGE CHUTE
8	F-2148	2	FHCS, 5/16-18 X 1 YZ, GR5
9	F-1009-02	2	5/16 FLAT WASHER
10	F-2063	2	NUT, 5/16-18 NYLOC FLANGED
11	643-133A	1	OUTLET STIFFENER w/DECAL, LARGE (SEE pg.2)
12	643-135A	1	OUTLET STIFFENER w/DECAL, SMALL (SEE pg.1)
13	H-2723	1	CHUTE, DISCHARGE, SMALL
14	643-110P	1	CHUTE HINGE

LIFT HANDLE ASSEMBLY & RELATED PARTS

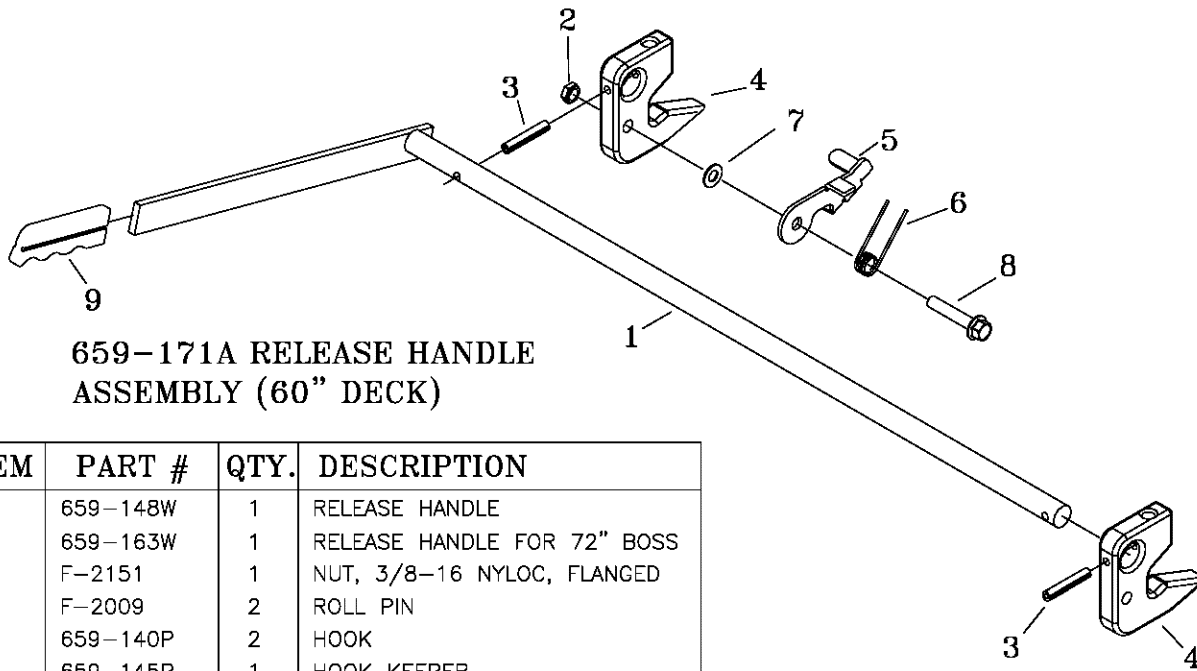


ITEM	PART #	QTY.	DESCRIPTION	ITEM	PART #	QTY.	DESCRIPTION
1	709-139P	1	BAR, LIFT HANDLE, LOWER	18	F-1015-28	2	CAPSCREW, 3/8-16x1-3/4" GR5
2	709-054W	1	FRAME SIDE WELDMENT, LH.	19	709-016P	1	SIDE PANEL, LH
3	709-108P	1	BRACKET, INNER BRAKE MNT	20	F-1542	1	CAPSCREW, 3/8-16x2 3/4" GR5
4	642-060P	2	SPRING ANCHOR PLATE	21	F-1828	1	1/2-13 X 3-1/2" GR. 5
5	642-061P	2	HANDLE LINK	22	642-095P	1	HANDLE PIVOT PIN
6	709-075P	1	BRACKET, HANDLE PIVOT	23	F-1005-03	6	NUT, 3/8-16 LOCKNUT (STOVER)
7	709-140P	1	PLATE, TOP PEG CATCH	24	F-1889	2	CLEVIS PIN, 1/2 X 2-5/8"
8	709-101P	1	BAR, LIFT HANDLE, UPPER	25	F-1521	3	1/2" FLAT WASHER
9	H-1610	1	SPRING, 1-1/2" OD. X 8"	26	H-2239	2	RUE RING, 1/2"
	H-1868	1	SPRING, HEAVY 8" (72" DECK)	27	H-2324	1	VINYL GRIP, 3/8 X 1-1/2"
10	709-062W	1	YOKE, SPRING WLDT	28	F-2147	2	FHCS, 3/8-16x1-1/2", YZ, GR5
11	F-1009-01	1	FLAT WASHER, 1/4"	29	F-2151	2	NUT, 3/8-16, NYLOC, FLANGED
12	F-1672	2	3/8-16 X 1-1/4" CARRIAGE BOLT	30	F-1125	2	5/16-18, STOVER NUT
13	709-116W	1	BRAKE ROD WLDT	31	638-028P	1	DAMPER BOLT, 5/16-18x3/4"
14	F-2120	1	FHCS, 5/16-18x3/4", YZ, GR5	32	F-1009-02	1	FLAT WASHER, 5/16"
15	F-1005-05	2	NUT, 1/2-13 LOCKNUT	33	F-1492	1	5/16-3/8 RUE RING
16	F-1646	1	3/8-16 X 5" FULL THREAD	34	629-532P	2	SPACER
17	F-1011-03	1	HEX NUT, 3/8-16 UNC-2B	35	642-193P	1	REAR LIFT SLEEVE

QRS SYSTEM PARTS



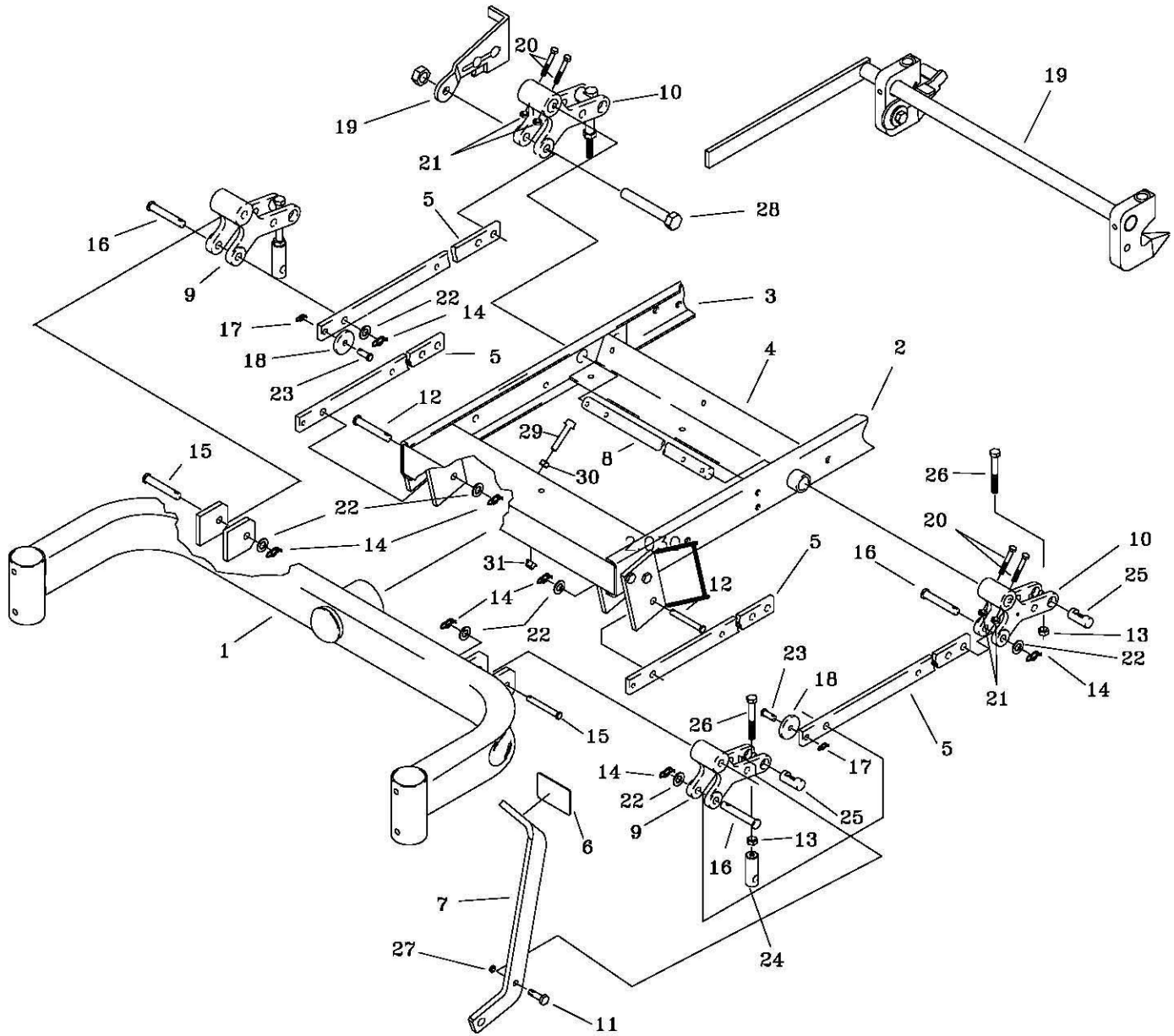
625-155A RELEASE HANDLE ASSEMBLY (72" DECK)



659-171A RELEASE HANDLE ASSEMBLY (60" DECK)

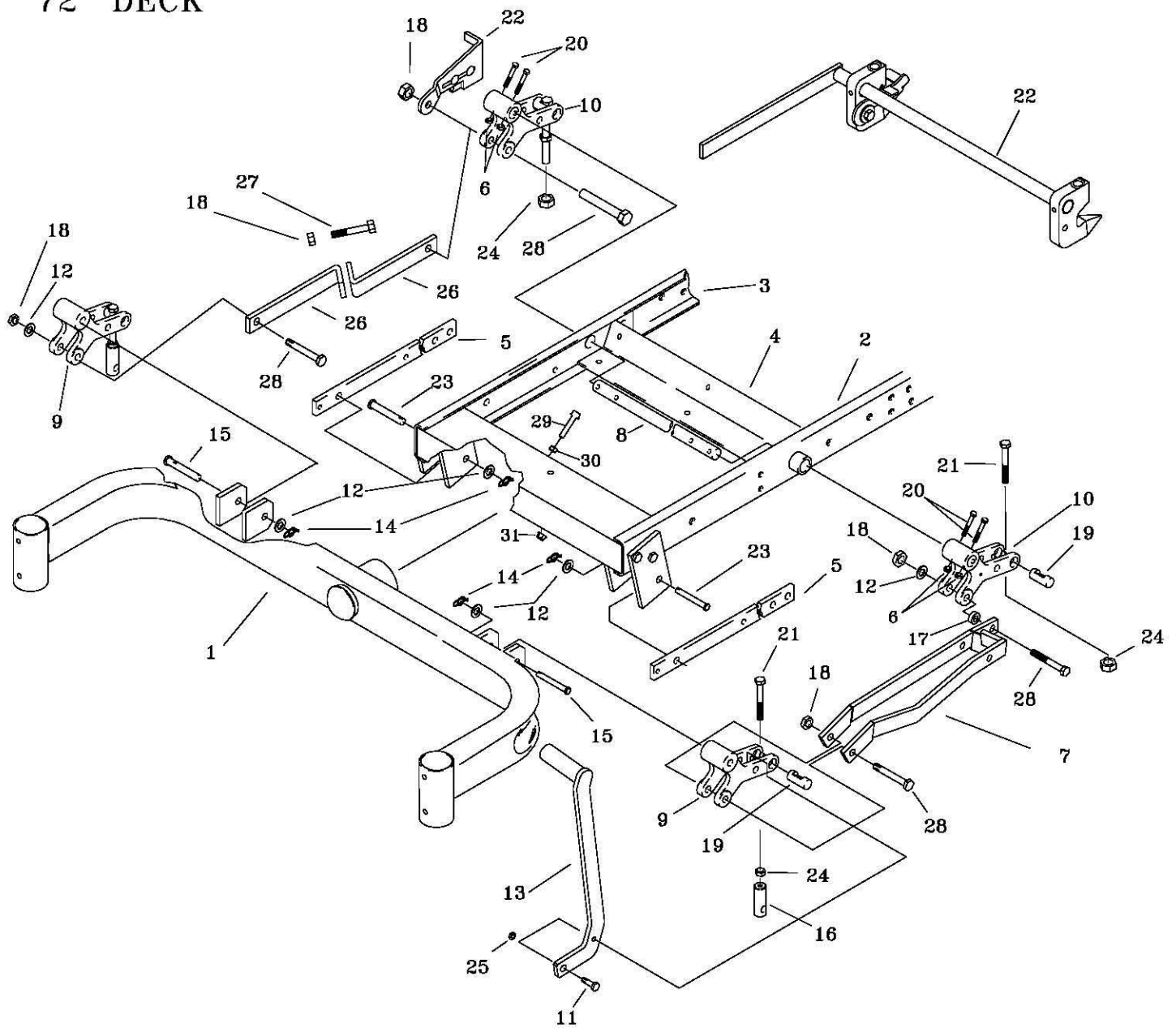
ITEM	PART #	QTY.	DESCRIPTION
1	659-148W	1	RELEASE HANDLE
-	659-163W	1	RELEASE HANDLE FOR 72" BOSS
2	F-2151	1	NUT, 3/8-16 NYLOC, FLANGED
3	F-2009	2	ROLL PIN
4	659-140P	2	HOOK
5	659-145P	1	HOOK KEEPER
6	H-2547	1	SPRING
7	F-1009-03	1	3/8" FLAT WASHER
8	F-2126	1	FHCS, 3/8-16x2", YZ, GR5
9	H-1926	1	1/4x1 HANDLE GRIP
10	659-170P	1	CATCH
11	659-146P	1	LATCH PLATE
12	F-1823	2	1/4 X 3/4" CARRIAGE BOLT
13	F-2163	1	FHCS, 1/2-13x3-1/2", YZ GR5
14	F-2152	1	NUT, 1/2-13 NYLOC, FLANGED
15	F-1158	1	1/4-20 STOVER NUT
16	642-193P	1	REAR LIFT SLEEVE

LIFT ASSEMBLY & RELATED PARTS 60" DECK



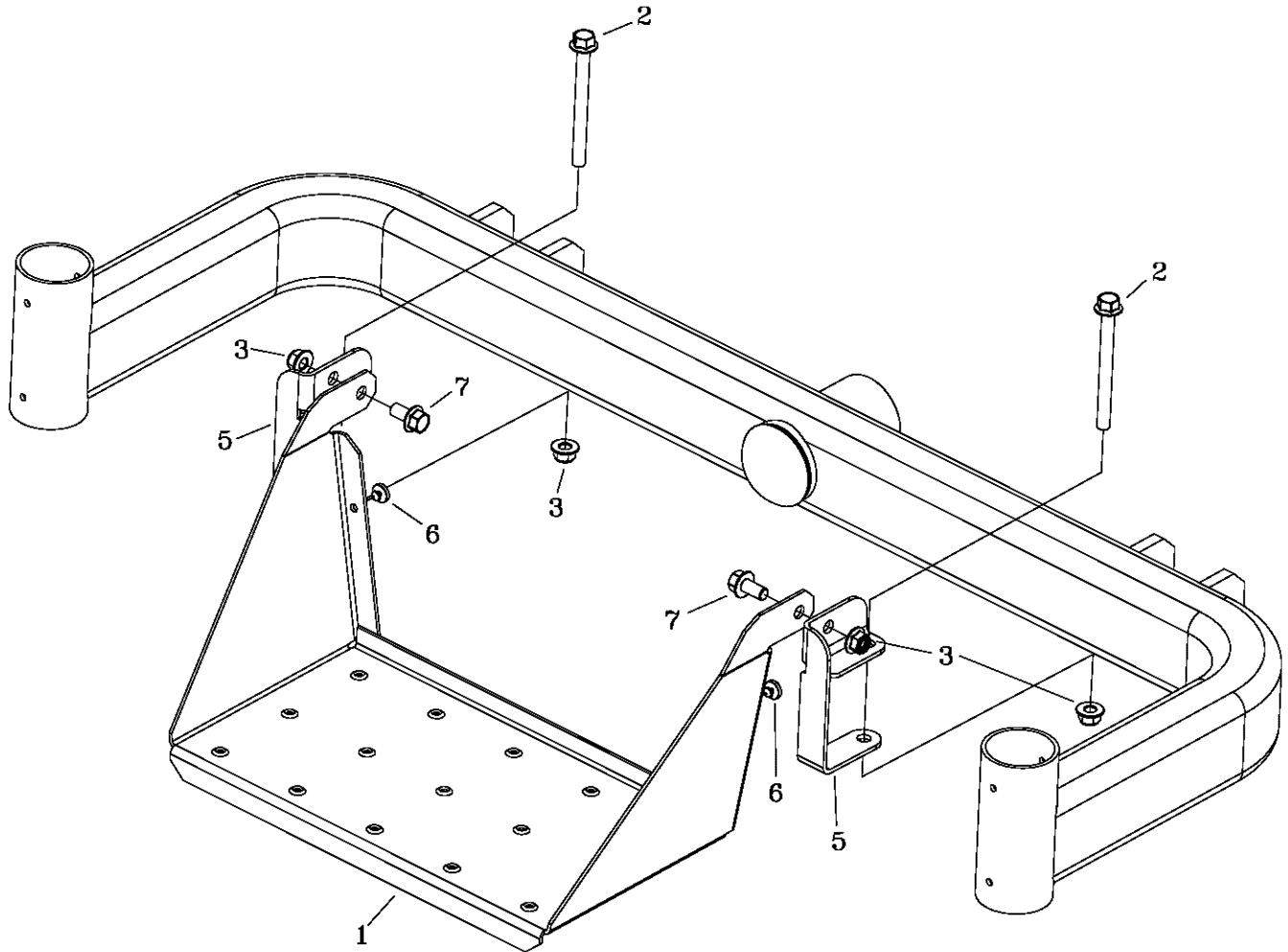
ITEM	PART #	QTY.	DESCRIPTION	ITEM	PART #	QTY.	DESCRIPTION
1	642-189W	1	FRONT AXLE WELDMENT	17	F-1492	2	RUE RING, 5/16-3/8 PIN
2	709-054W	1	FRAME SIDE WLDT, LH	18	642-105P	2	ROLLER
3	709-055W	1	FRAME SIDE WLDT, RH	19	-----	1	QRS SYSTEM, SEE PAGE #6
4	709-157W	1	FRONT PIVOT CHANNEL	20	F-2039	4	5/16-24 x 2" HHCS
5	642-059P	4	LINK BAR	21	F-2041	4	5/16-24 LOCK NUT
6	H-2401	1	1-1/2"x2-1/2" SAFETY TREAD	22	F-1521	8	WASHER, 1/2 NARROW
7	659-056P	1	DECK LIFT PEDAL	23	F-1691	2	CLEVIS PIN, 3/8 X 1"
8	620-051P	1	LIFT BAR	24	642-175P	2	ADJUSTABLE HANGER END
9	642-081P	2	LIFT SLEEVE, FRONT	25	642-177P	4	HANGER PIN
10	642-193P	2	LIFT SLEEVE, REAR	26	F-1936	4	1/2-13 X 3-1/2, 2" THREAD
11	F-1879	1	5/16-18 X 1 1/4", GR.5	27	F-1125	1	5/16 LOCKNUT
12	F-1896	2	CLEVIS PIN, 1/2 X 1-3/4"	28	F-2163	1	FHCS, 1/2-13x3-1/2", YZ, GR5
13	F-1489	4	NUT, 1/2" JAM	29	F-2126	1	FHCS, 3/8-16 x 2", YZ, GR5
14	H-2239	8	RUE RING, 1/2"	30	F-1011-03	1	NUT, 3/8-16
15	F-1890	2	CLEVIS PIN, 1/2 X 3-1/2"	31	F-2151	1	NUT, 3/8-16 NYLOC, FLANGED
16	F-1898	3	CLEVIS PIN, 1/2 X 2-3/4"				

LIFT ASSEMBLY & RELATED PARTS 72" DECK



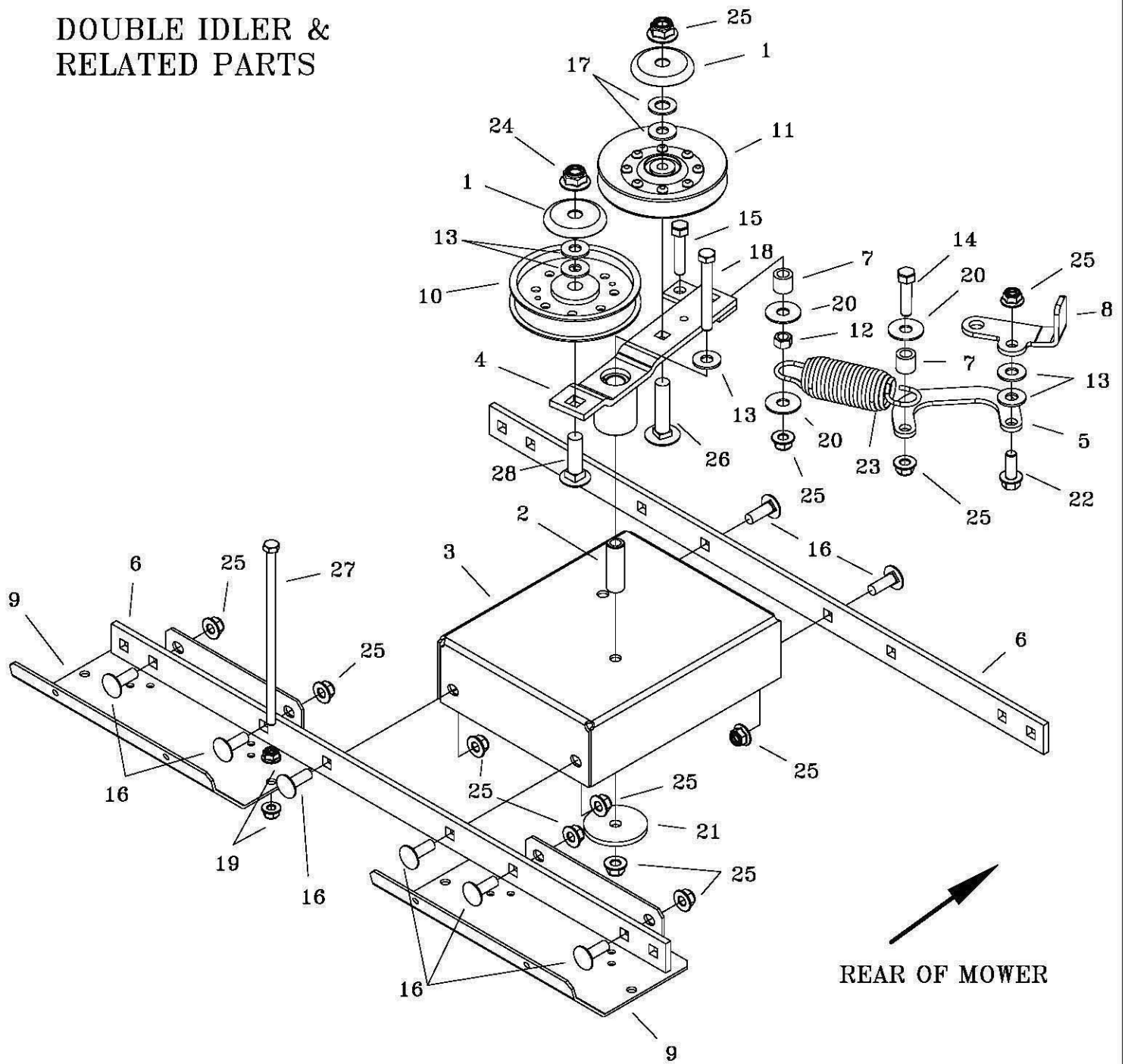
ITEM	PART #	QTY.	DESCRIPTION	ITEM	PART #	QTY.	DESCRIPTION
1	642-190W	1	WIDE FRONT AXLE WELDMENT	17	660-038P	1	3/8" SPACER
2	709-254W	1	FRAME SIDE WLDT, LH	18	F-2152	5	NUT, 1/2-13, NYLOC, FLANGED
3	709-255W	1	FRAME SIDE WLDT, RH	19	642-177P	2	HANGER PIN
4	709-157W	1	FRONT PIVOT CHANNEL	20	F-2039	4	5/16-24 x 2" HHCS BOLT
5	642-059P	2	LINK BAR	21	F-1936	4	1/2-13 X 3-1/2, 2" THREAD
6	F-2041	4	5/16-24 LOCKNUT	22	----	1	QRS SYSTEM, SEE PAGE #6
7	629-735W	1	UPPER JACK MNT.	23	F-1896	2	CLEVIS PIN, 1/2 X 1-3/4"
8	620-051P	1	LIFT BAR	24	F-1489	4	NUT, 1/2" JAM
9	642-081P	2	LIFT SLEEVE, FRONT	25	F-1125	1	5/16" LOCKNUT
10	642-193P	2	LIFT SLEEVE, REAR	26	647-144P	2	OFFSET LINK BAR ADJUSTABLE
11	F-1879	1	5/16-18 X 1-1/4" BOLT	27	F-2128	1	FHCS, 1/2-13 x 2", YZ, GR5
12	F-1521	6	WASHER, 1/2 NARROW	28	F-2163	4	FHCS, 1/2-13x3-1/2", YZ, GR5
13	629-249W	1	OFFSET DECK LIFT PEDAL	29	F-2126	1	FHCS, 3/8-16 x 2", YZ, GR5
14	H-2239	4	RUE RING, 1/2"	30	F-1011-03	1	NUT, 3/8-16
15	F-1890	2	CLEVIS PIN, 1/2 X 3-1/2"	31	F-2151	1	NUT, 3/8-16 NYLOC, FLANGED
16	642-175P	2	ADJUSTABLE HANGER END				

STEP & RELATED PARTS



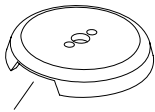
ITEM #	PART #	QTY	DESCRIPTION
1	663-134P	1	STEP, EXTENDED
2	F-2142	2	FHCS, 3/8-16x4", YZ, GR5
3	F-2151	4	NUT, 3/8-16 NYLOC, FLANGED
4	659-241P	1	STEP MOUNT BRACKET, RH
5	659-242P	1	STEP MOUNT BRACKET, LH
6	H-2461	2	RUBBER BUMPER BUTTON
7	F-2124	2	FHCS, 3/8-16x3/4", YZ, GR5

DOUBLE IDLER & RELATED PARTS

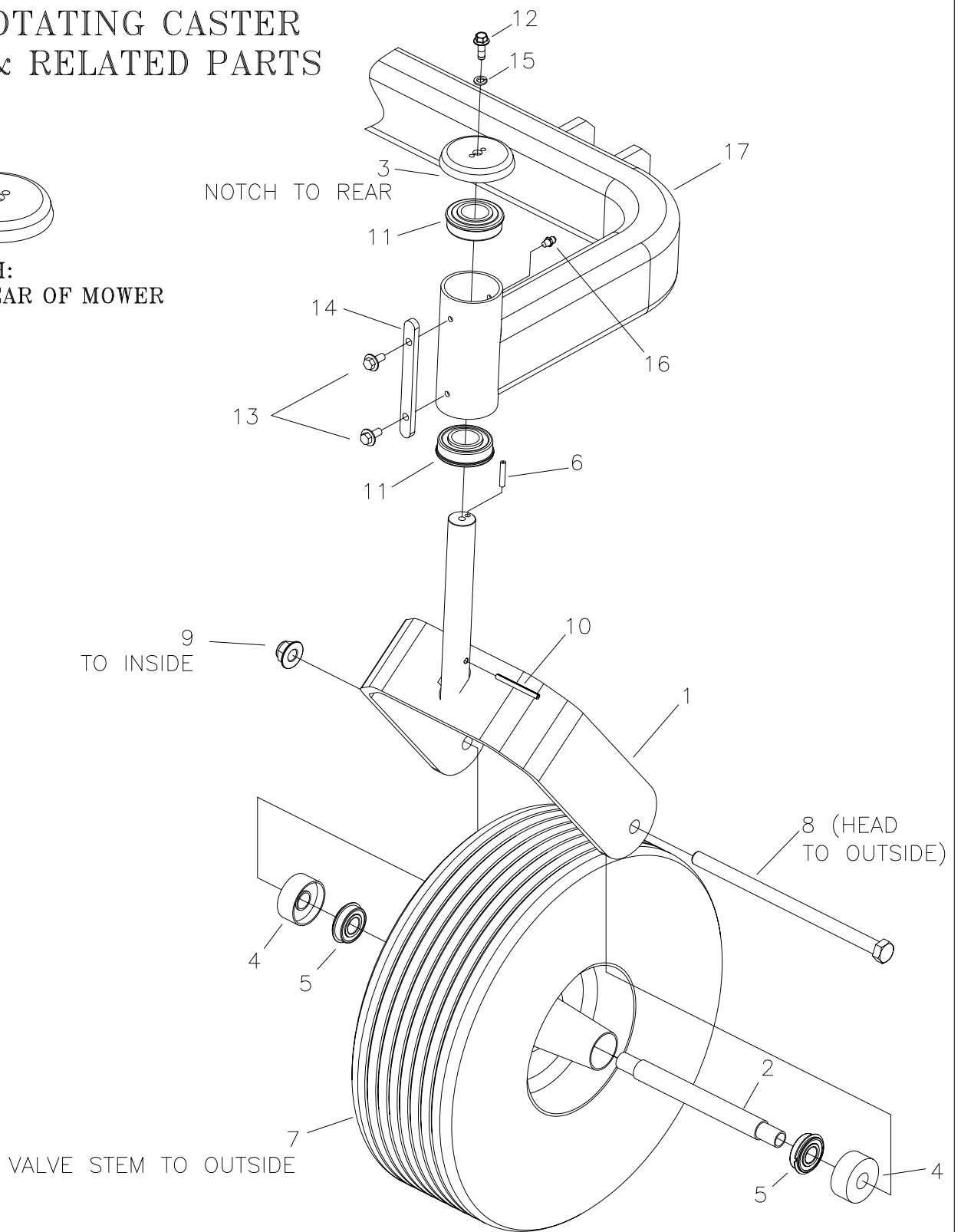


ITEM	PART #	QTY.	DESCRIPTION	ITEM	PART #	QTY.	DESCRIPTION
1	620-201P	2	WASHER, BEARING CAP	15	F-1015-28	1	3/8-16 x 1-3/4" CAPSCREW
2	709-077P	1	MOUNTING PIN	16	F-1274	8	3/8-16 x 1" CARRIAGE BOLT
3	709-085P	1	DECK DRIVE IDLER MOUNT	17	F-1521	2	1/2" WASHER, CUSTOM
4	709-087A	1	IDLER ARM ASSEMBLY	18	F-1537	1	3/8-16 x 3" CAPSCREW
5	709-088P	1	LINK, BELT TIGHTENING	19	F-2063	2	NUT, 5/16-18 NYLOC, FLANGED
6	709-091P	2	CROSS BRACE	20	F-2083	3	WASHER, 3/8 FENDER
7	709-123P	2	SPACER, BELT TENSION	21	F-2102	1	WASHER, .406ID x 2.25OD x 7GA
8	709-124P	1	HANDLE, BELT TIGHTENER	22	F-2141	1	FHCS, 3/8-16 x 1", YZ, GR5
9	709-126P	2	AIR DAM	23	H-2619	1	SPRING, 5 x 1-1/2", TAPERED ENDS
10	D-3617	1	4" IDLER PULLEY 1/2" BORE	24	F-2152	1	NUT, 1/2-13 NYLOC, FLANGED
11	D-3758	1	PULLEY V-IDLER, 4.48 O.D., 3/8" HOLE	25	F-2151	12	NUT, 3/8-16 NYLOC, FLANGED
12	F-1005-03	1	3/8-16 STOVER NUT	26	F-1976	1	3/8-16 x 2" CARRIAGE BOLT
13	F-1009-03	5	3/8 FLAT WASHER	27	F-2156	1	5/16-18 x 8-1/2" CAPSCREW
14	F-1015-27	1	3/8-16 x -1/2" CAPSCREW	28	F-1964	1	1/2-13 x 1-3/4" CARRIAGE BOLT

ANTI-ROTATING CASTER WHEEL & RELATED PARTS

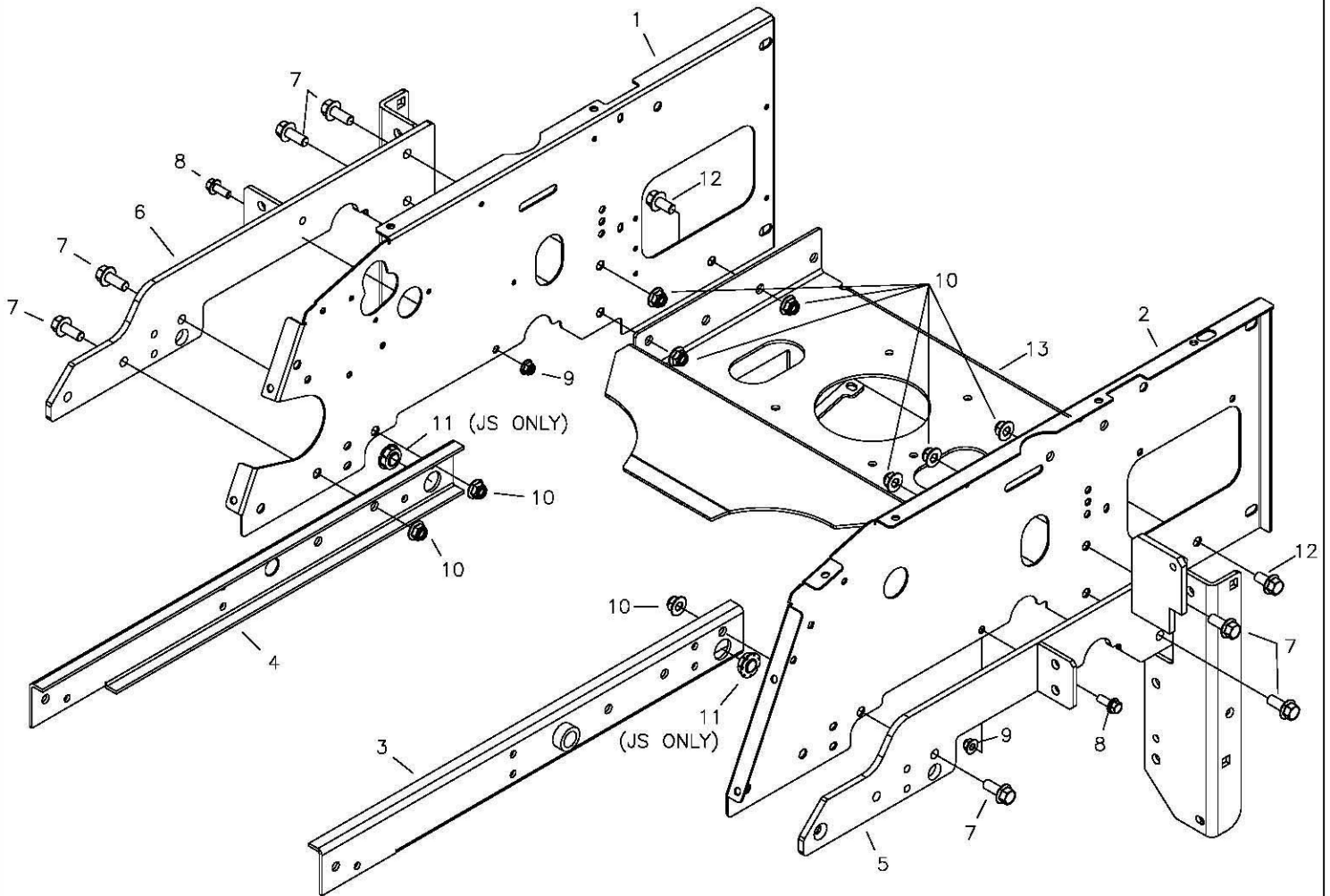


NOTE NOTCH:
TOWARDS REAR OF MOWER



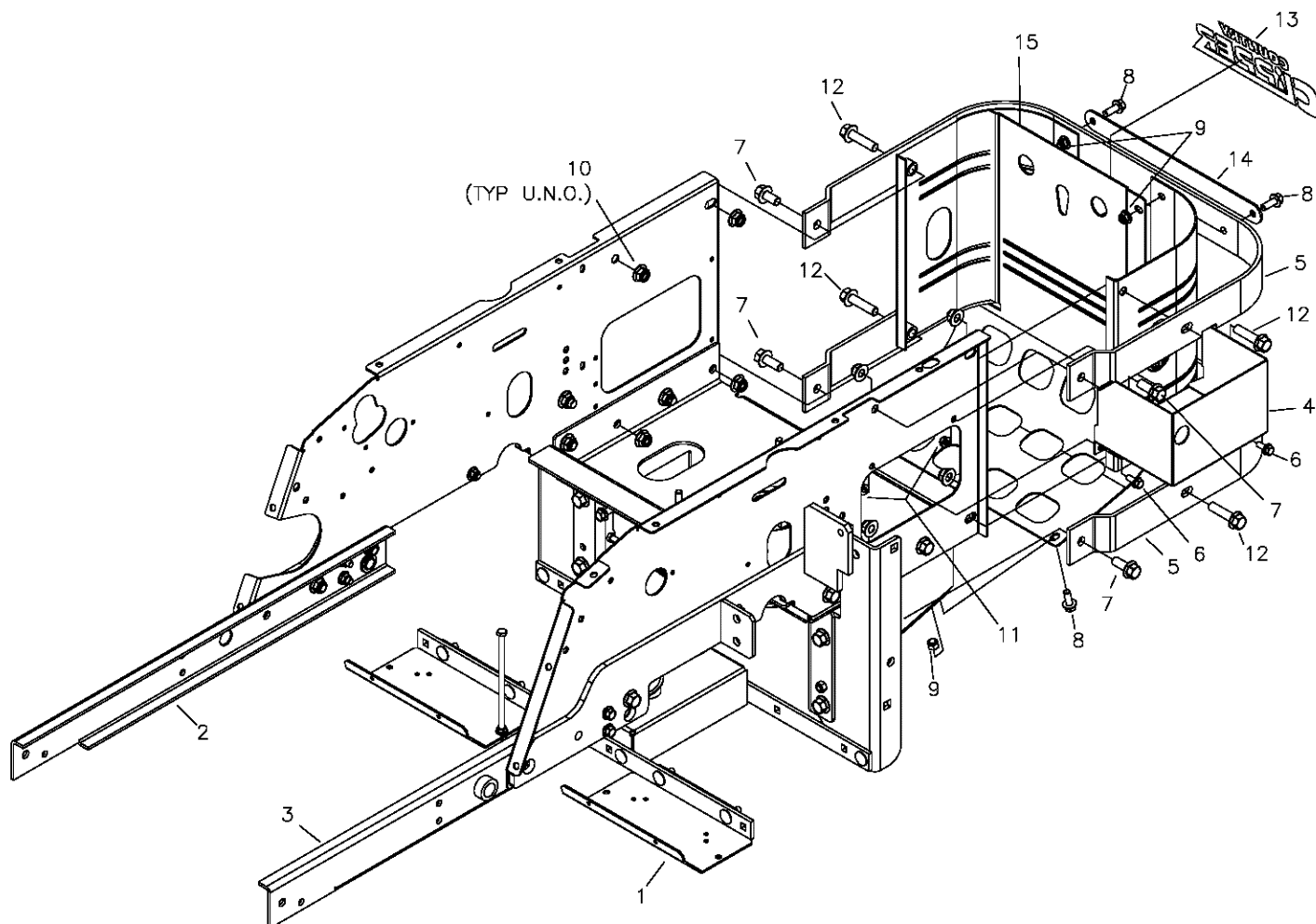
ITEM	PART #	QTY.	DESCRIPTION	ITEM	PART #	QTY.	DESCRIPTION
1	709-043W	1	CASTER WLDT	10	F-1456	1	3/16 x 2" SPIRAL PIN
2	647-038P	1	BEARING SPACER	11	D-2008-02	2	BEARING, SPD SF-16-32
3	636-177P	1	BEARING CAP	12	F-2121	1	FHCS, 5/16-18X3/4", LOCK PATCH
4	611-135P	2	BEARING SHIELD	13	F-2030	2	1/4" x 5/8" SELF TAPPING SCREW
5	D-3432	2	BEARING, 5/8 ID X 1-3/8 OD	14	659-187P	1	STOP TAB
6	F-1855	1	3/16 x 1" ROLL PIN	15	F-1019-02	1	LOCK WASHER, 5/16
7	D-3893	1	TIRE, 15 X 6.00-6 (RIBBED)	16	H-1056	1	GREASE ZERK
8	F-2159	1	1/2-13 X 9-1/2" GR5	17	-----	1	FRONT AXLE WELDMENT (SEE pg.7 OR 8)
9	F-2152	1	NUT, 1/2-13 NYLOCK, GR5				

FRAME SIDES & RELATED PARTS



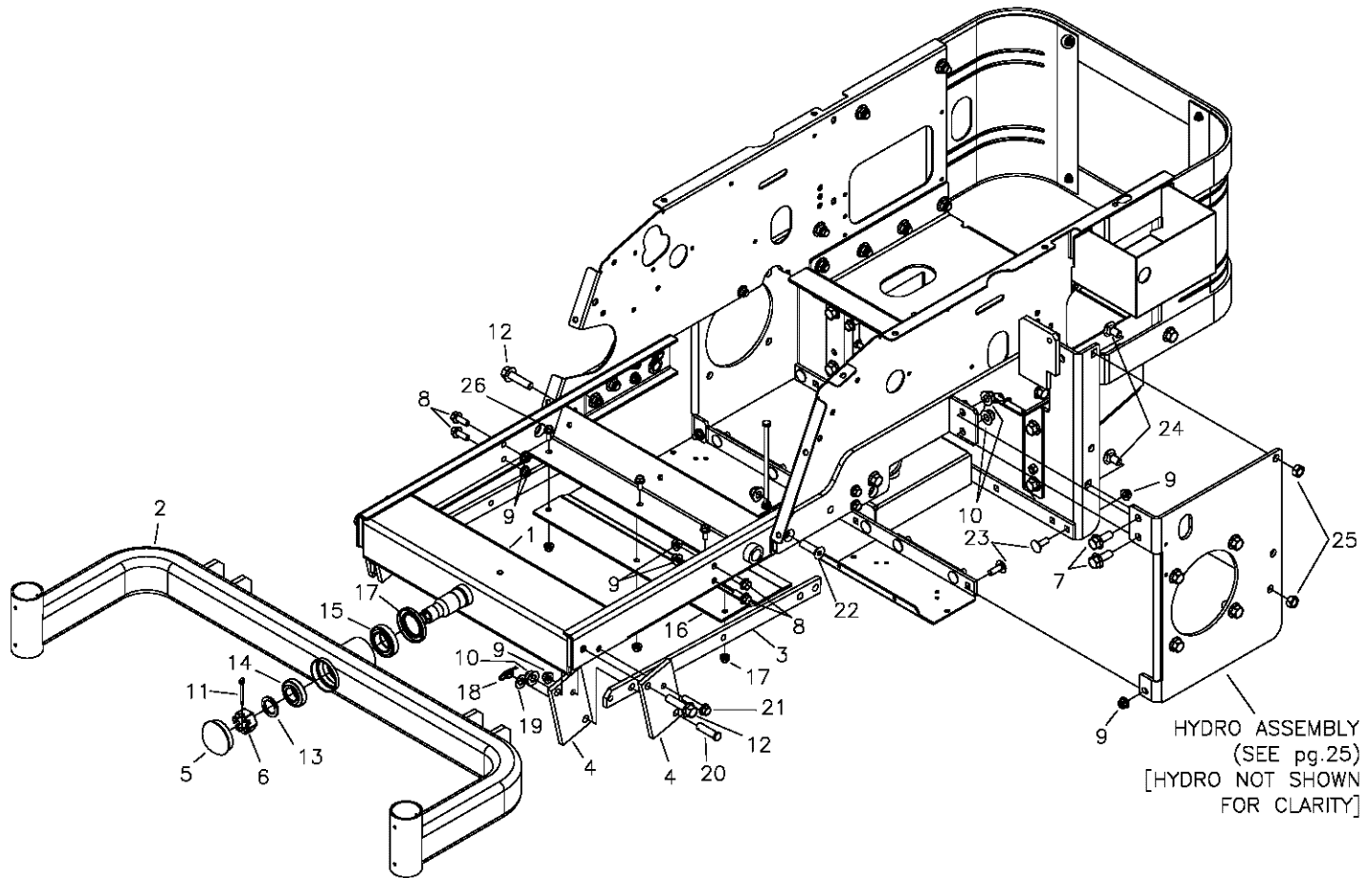
ITEM	PART #	QTY.	DESCRIPTION	ITEM	PART #	QTY.	DESCRIPTION
1	709-016P	1	SIDE PANEL, JS, RH	7	F-2127	5	FHCS, 1/2-13x1-1/4", YZ, GR5
-	709-056P	1	SIDE PANEL, TS, RH	8	F-2141	2	FHCS, 3/8-16 x 1", YZ, GR5
2	709-017P	1	SIDE PANEL, JS, LH	9	F-2151	2	NUT, 3/8-16 NYLOC, FLANGED
-	709-076P	1	SIDE PANEL, TS, LH	10	F-2152	9	NUT, 1/2-13 NYLOC, FLANGED
3	709-054W	1	FRAME SIDE WLDT LH	11	H-2773	2	BEARING, FLANGED-SPHERICAL, IGUS
4	709-055W	1	FRAME SIDE WLDT RH	12	F-2143	2	FHCS, 1/2-13x1", YZ, GR5
5	709-080W	1	SIDE PLATE WLDT LH	13	709-009W	1	MOTOR MOUNT WLDT
6	709-081W	1	SIDE PLATE WLDT RH				

FRAME SIDES & RELATED PARTS (CON'T)



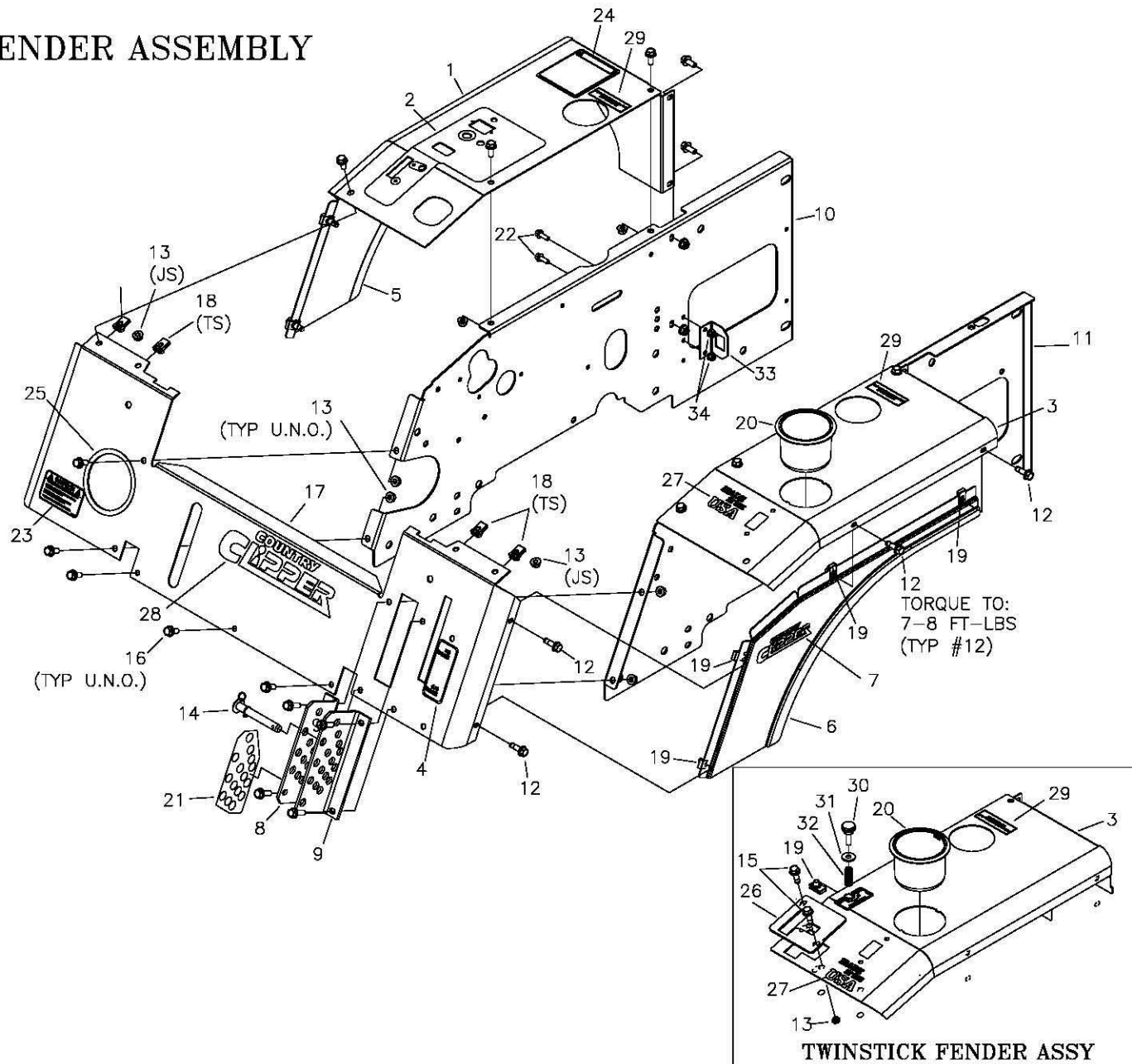
ITEM	PART #	QTY.	DESCRIPTION	ITEM	PART #	QTY.	DESCRIPTION
1	-----	1	DOUBLE IDLER (SEE PG.10)	9	F-2151	6	NUT, 3/8-16 NYLOC, FLANGED
2	-----	1	FRAME SIDE (SEE PG.12)	10	F-2152	8	NUT, 1/2-13 NYLOC, FLANGED
3	-----	1	FRAME SIDE (SEE PG.12)	11	F-2063	2	NUT, 5/16-18, NYLOC, FLANGED
4	709-022P	1	BATTERY MOUNT BOX	12	F-2128	2	FHCS, 1/2-13x2", YZ, GR5
5	709-098P	2	BAR, REAR ENGINE GUARD	13	P-12980	1	DECAL, CC, CHROME, LG
6	F-2120	2	FHCS, 5/16-18x3/4", YZ, GR5	14	H-2803	1	PLACARD
7	F-2127	4	FHCS, 1/2-13x1-1/4", YZ, GR5	15	625-156A	1	REAR ENGINE GUARD, w/DECAL
8	F-2141	6	FHCS, 3/8-16 x 1", YZ, GR5				

FRAME SIDES & RELATED PARTS (CON'T)



ITEM	PART #	QTY.	DESCRIPTION	ITEM	PART #	QTY.	DESCRIPTION
1	642-191W	1	FRONT PIVOT CHANNEL WLDT	15	D-3825	1	BRG, TAPERED, SET, L68149-L68110
2	642-189W	1	FRONT AXLE WLDT (60" DECK)	16	709-100P	1	FUEL TANK SUPPORT
-	642-190W	1	FRONT AXLE WLDT (72" DECK)	17	H-2812	1	SEAL, SHAFT, 1.75x2.375x0.313
3	642-059P	2	LINK BAR	18	H-2239	2	1/2" RUE RING
4	642-063P	4	DRAG BAR MOUNT TAB	19	F-1521	2	1/2" WASHER, CUSTOM
5	H-1924	1	GREASE CAP	20	F-1896	2	1/2" x 1-3/4", CLEVIS PIN
6	F-1724	1	SLOTTED HEX NUT, 1"-14	21	F-2126	2	FHCS, 3/8-16 x 2", YZ, GR5
7	F-2127	2	FHCS, 1/2-13x1-1/4", YZ, GR5	22	F-2149	1	HEX SCK FLT HD CAP, 1/2-13x1-3/4"
8	F-2141	4	FHCS, 3/8-16 x 1", YZ, GR5	23	F-1274	2	CARRIAGE BOLT, 3/8-16 x 1"
9	F-2151	7	NUT, 3/8-16 NYLOC, FLANGED	24	F-2146	2	CARRIAGE BOLT, 1/2-13 x 1"
10	F-2152	4	NUT, 1/2-13 NYLOC, FLANGED	25	F-1005-05	2	1/2-13 STOVER NUT
11	F-1728	1	3/16" x 2" COTTER PIN	26	F-2120	3	FHCS, 5/16-18 x 3/4", YZ, GR5
12	F-2128	2	FHCS, 1/2-13x2", YZ, GR5	27	F-2063	3	NUT, 5/16-18 NYLOC, FLANGED
13	606-303P	1	1" WASHER				
14	D-3826	1	BRG, TAPERED, SET, L44643-L44610				

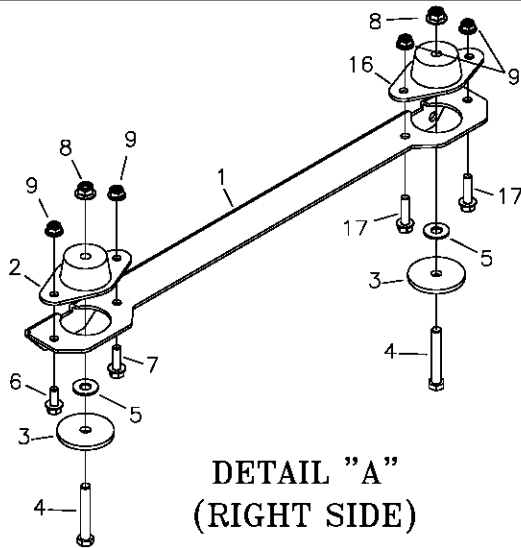
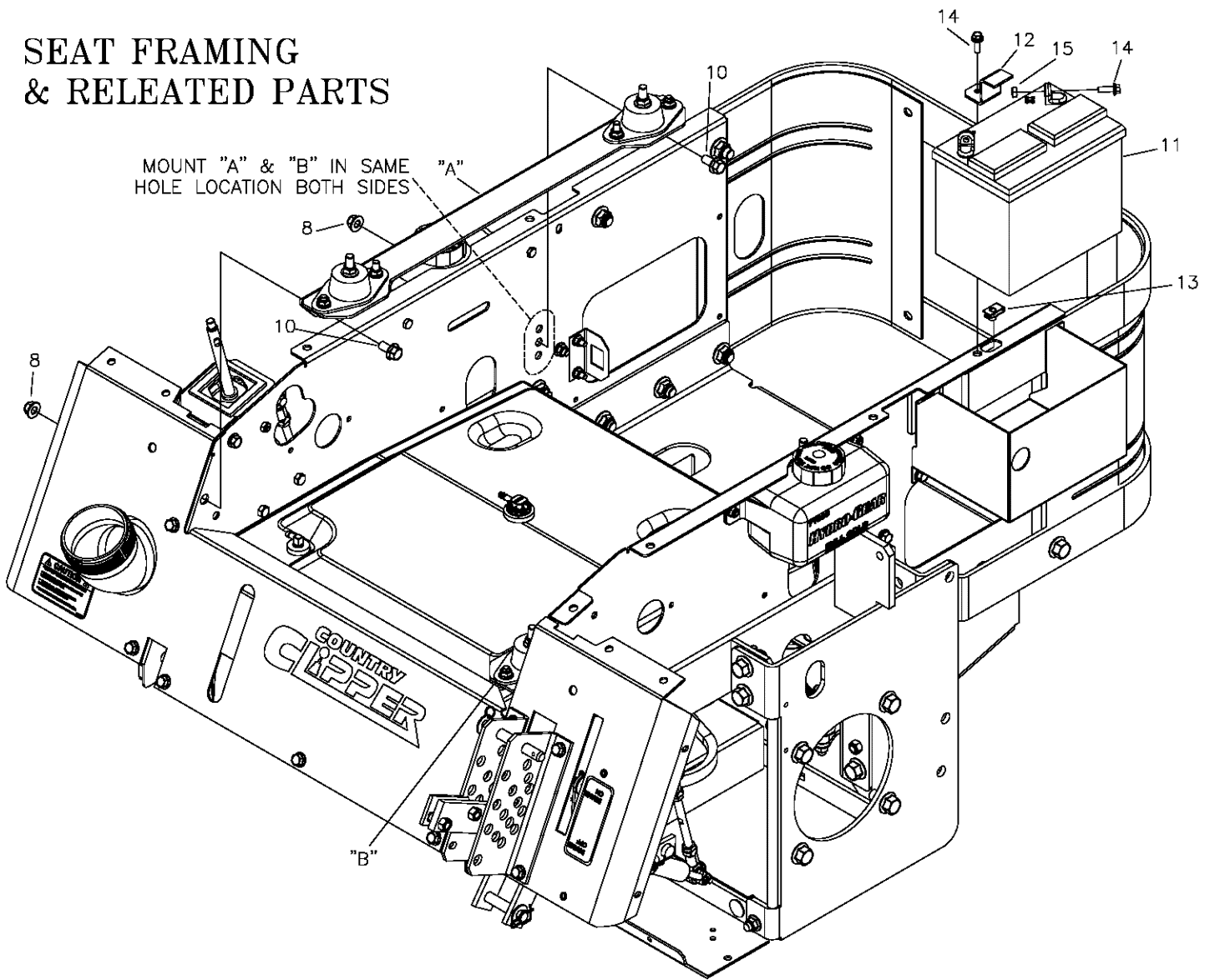
FENDER ASSEMBLY



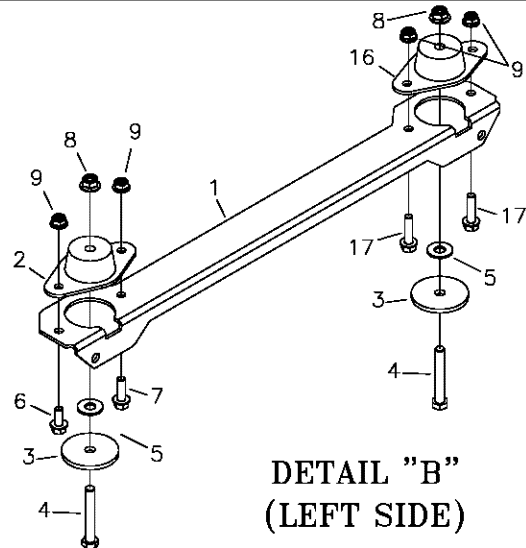
TWINSTICK FENDER ASSY

ITEM	PART #	QTY.	DESCRIPTION	ITEM	PART #	QTY.	DESCRIPTION
1	625-157A	1	FENDER CAP w/DECAL, RH, (JS)	15	F-2121	4	FHCS, 5/16-18x1" GR.5 w/PATCH
-	625-159A	1	FENDER CAP w/DECAL, RH, (TS)	16	F-2120	17	FHCS, 5/16-18 X 3/4" GR.5
-	625-164A	1	FENDER CAP, EFI w/DECAL, RH, (JS)	17	625-163A	1	FRONT PANEL w/DECALS
-	625-165A	1	FENDER CAP, EFI w/DECAL, RH, (TS)	18	F-1860	4	5/16-18 "U"-NUT
2	P-11369	1	DECAL, CONTROL PANEL (JS)	19	F-1858	8	1/4-20 "U"-NUT
-	P-11533	1	DECAL, CONTROL PANEL (JS, E.F.I.)	20	H-2228	1	CUP HOLDER
-	P-12682	1	DECAL, CONTROL PANEL (TS)	21	P-12034	1	DECAL, "CUT HEIGHT"
-	P-12686	1	DECAL, CONTROL PANEL (TS, E.F.I.)	22	F-2162	2	FHCS, 1/4-20 x 3/4", YZ, GR.5
3	625-158A	1	FENDER CAP w/DECAL, LH (JS)	23	P-12557	1	DECAL, "CAUTION"
-	625-160A	1	FENDER CAP w/DECAL, LH (TS)	24	P-11370	1	DECAL, WARNING
4	P-11382	1	DECAL, PARK BRAKE	25	H-1626	1	U CHANNEL TRIM
5	625-161A	1	FENDER SKIRT w/DECAL, RH	26	659-262P	2	NEUTRAL PLATE
6	625-162A	1	FENDER SKIRT w/DECAL, LH	27	P-13000	1	DECAL, "USA"
7	P-12979	2	DECAL, CC, CHROME, SM	28	P-12980	1	DECAL, CC, CHROME, LG
8	647-097A	1	LATCH PLATE RH W/DECAL	29	P-11052	2	HYDRO FLUID DECAL
9	647-095P	1	LATCH PLATE LH.	30	F-2081	2	KNOB, 5/16-18x1", 7/8" DIA HEAD
10	-----	1	SEE PAGE 12	31	F-1009-02	2	5/16" FLAT WASHER
11	-----	1	SEE PAGE 12	32	H-1776	2	SPRING, COMP .48 x .0445 x 1.25
12	F-2119	8	FHCS, 1/4-20x3/4", GR.5 w/PATCH	33	647-146P	1	FUSE HOLDER
13	F-2063	20	FLANGED NUT, 5-16-18, NYLOC	34	F-2132	2	NUT, 1/4-20 NYLOC, FLANGED
14	F-2028	1	LOCK PIN, POSITIVE 1/2" x 2-1/2"				

SEAT FRAMING & RELATED PARTS



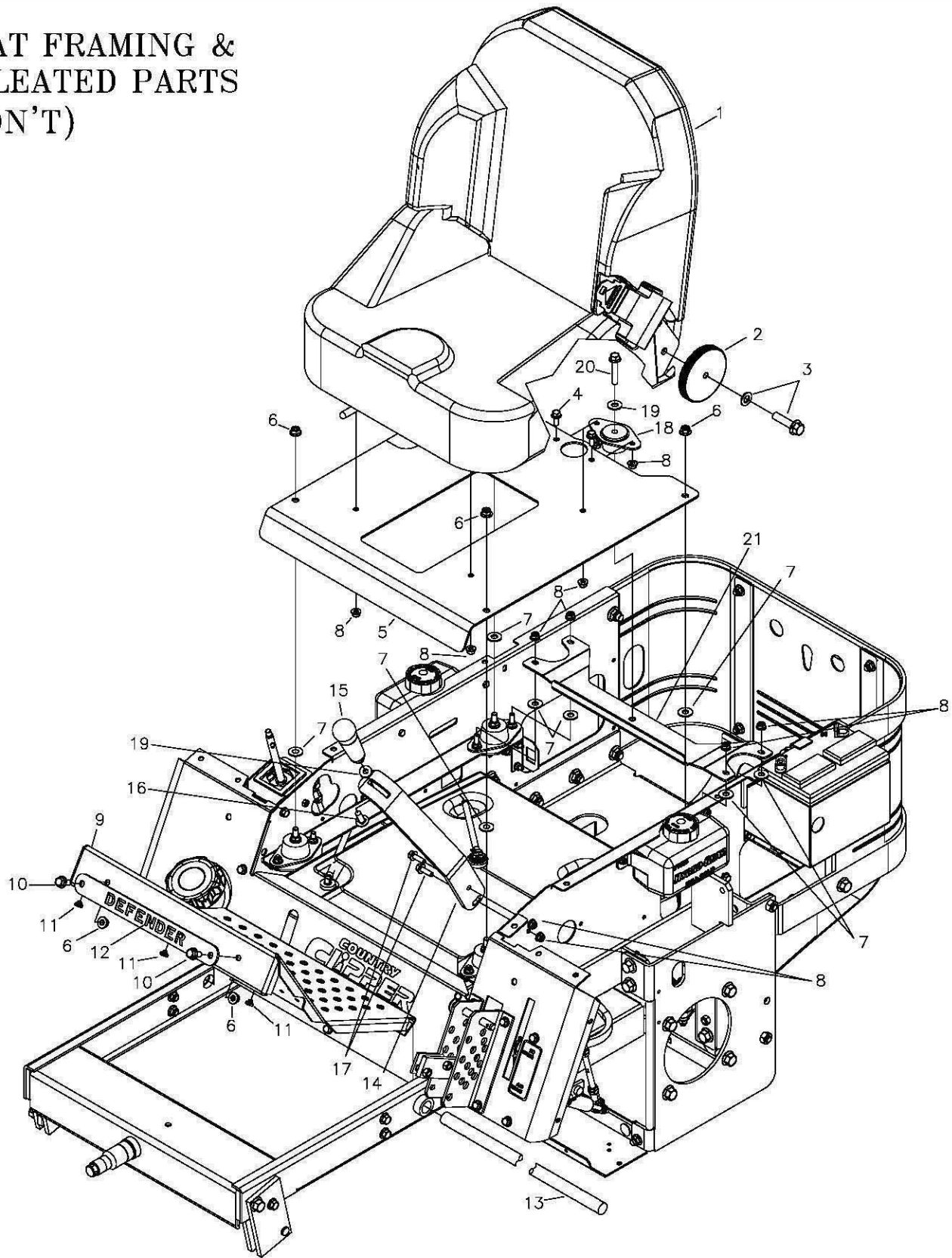
**DETAIL "A"
(RIGHT SIDE)**



**DETAIL "B"
(LEFT SIDE)**

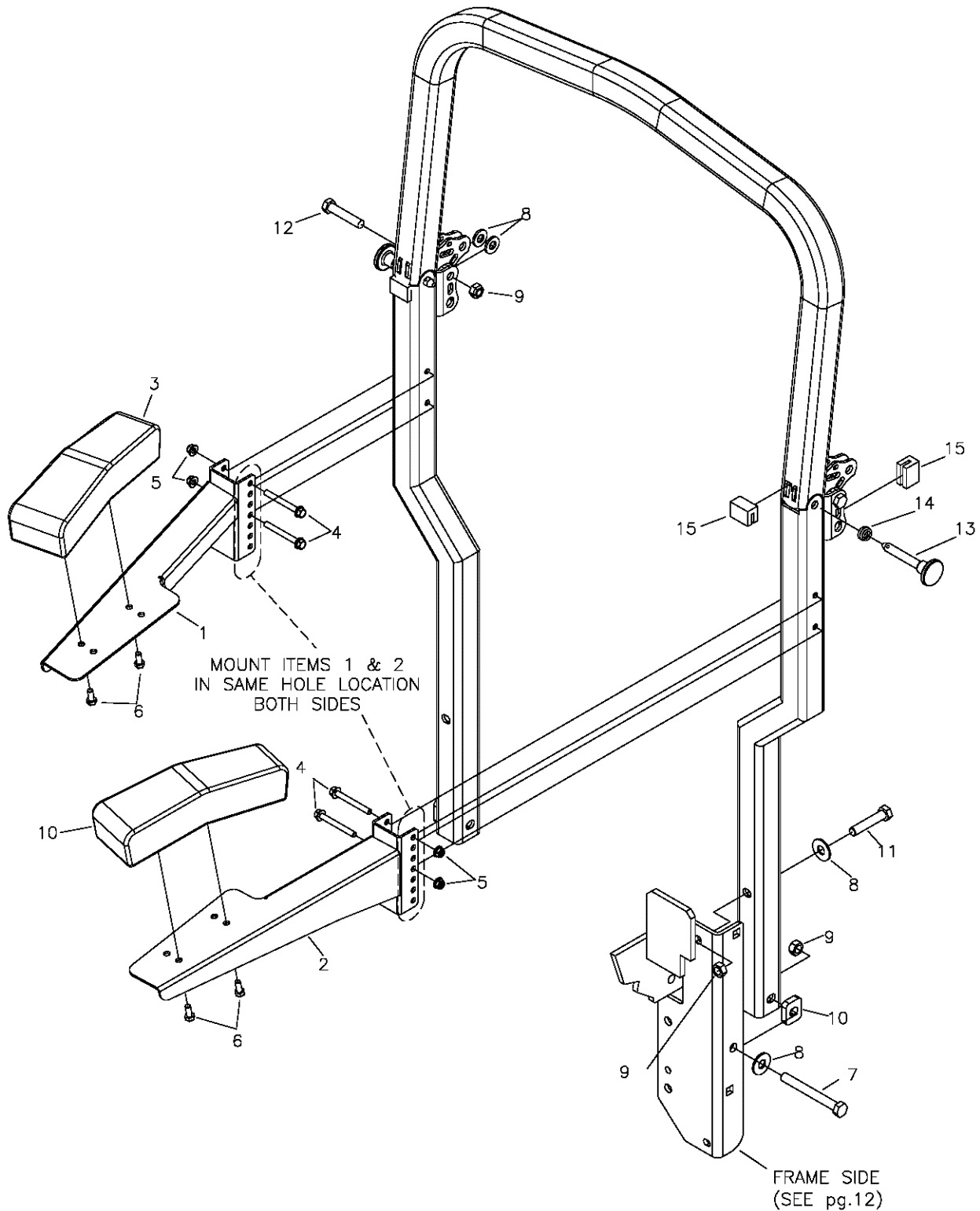
ITEM	PART #	QTY.	DESCRIPTION	ITEM	PART #	QTY.	DESCRIPTION
1	709-020P	2	SEAT MOUNT ANGLE	10	F-2124	4	FHCS, 3/8-16 x 3/4", YZ, GR5
2	H-2734	2	ISOLATOR, VIBRATION	11	E-6271	1	12 VOLT BATTERY, YSP 40 AMP
3	F-2102	4	WASHER .406 I.D.x2.25 O.D.x7GA	12	709-097P	1	BATTERY HOLD DOWN
4	F-1015-30	4	3/8-16 x 2-1/2", CAPSCREW	13	F-1858	1	1/4-20 "U"-NUT
5	F-1009-03	4	3/8" FLAT WASHER	14	F-2162	3	FHCS, 1/4-20 x 3/4", YZ, GR5
6	F-2120	2	FHCS, 5/16-18 x 3/4", YZ, GR5	15	F-1158	2	1/4-20 STOVER NUT
7	F-2148	6	FHCS, 5/16-18 x 1", YZ, GR5	16	H-2830	2	ISOLATOR, VIBRATION
8	F-2151	4	NUT, 3/8-16 NYLOC, FLANGED	17	F-2122	4	FHCS, 5/16-18x1-1/4", YZ, GR5
9	F-2063	8	NUT, 5/16-18 NYLOC, FLANGED				

SEAT FRAMING & RELEATED PARTS (CON'T)



ITEM	PART #	QTY.	DESCRIPTION	ITEM	PART #	QTY.	DESCRIPTION
1	H-2788	1	SEAT	12	H-2803	1	PLACARD
2	709-147P	1	SEAT RECLINE KNOB	13	620-051P	1	LIFT BAR
3	H-2827	1	RECLINER HARDWARE KIT	14	709-107P	1	BAR, SECURITY HANDLE MOUNT
4	F-2120	1	FHCS, 5/16-18 x 3/4", YZ, GR5	15	H-2764	1	HANDLE, JOYSTICK
5	709-021P	1	SEAT PAN	16	F-1274	1	CARRIAGE BOLT, 3/8-16 x 1"
6	F-2151	6	NUT, 3/8-16 NYLOC, FLANGED	17	F-2148	1	FHCS, 5/16-18 x 1", YZ, GR5
7	F-1009-02	8	5/16" FLAT WASHER	18	H-2734	1	ISOLATOR, VIBRATION
8	F-2063	12	NUT, 5/16-18 NYLOC, FLANGED	19	F-1009-03	1	3/8" FLAT WASHER
9	642-044P	1	FOOT DECK	20	F-2126	1	FHCS, 3/8-16 x 2", YZ, GR5
10	F-2124	2	FHCS, 3/8-16 x 3/4", YZ, GR5	21	709-160P	1	CHANNEL, REAR SEAT PAN
11	H-2461	3	RUBBER BUMPER				

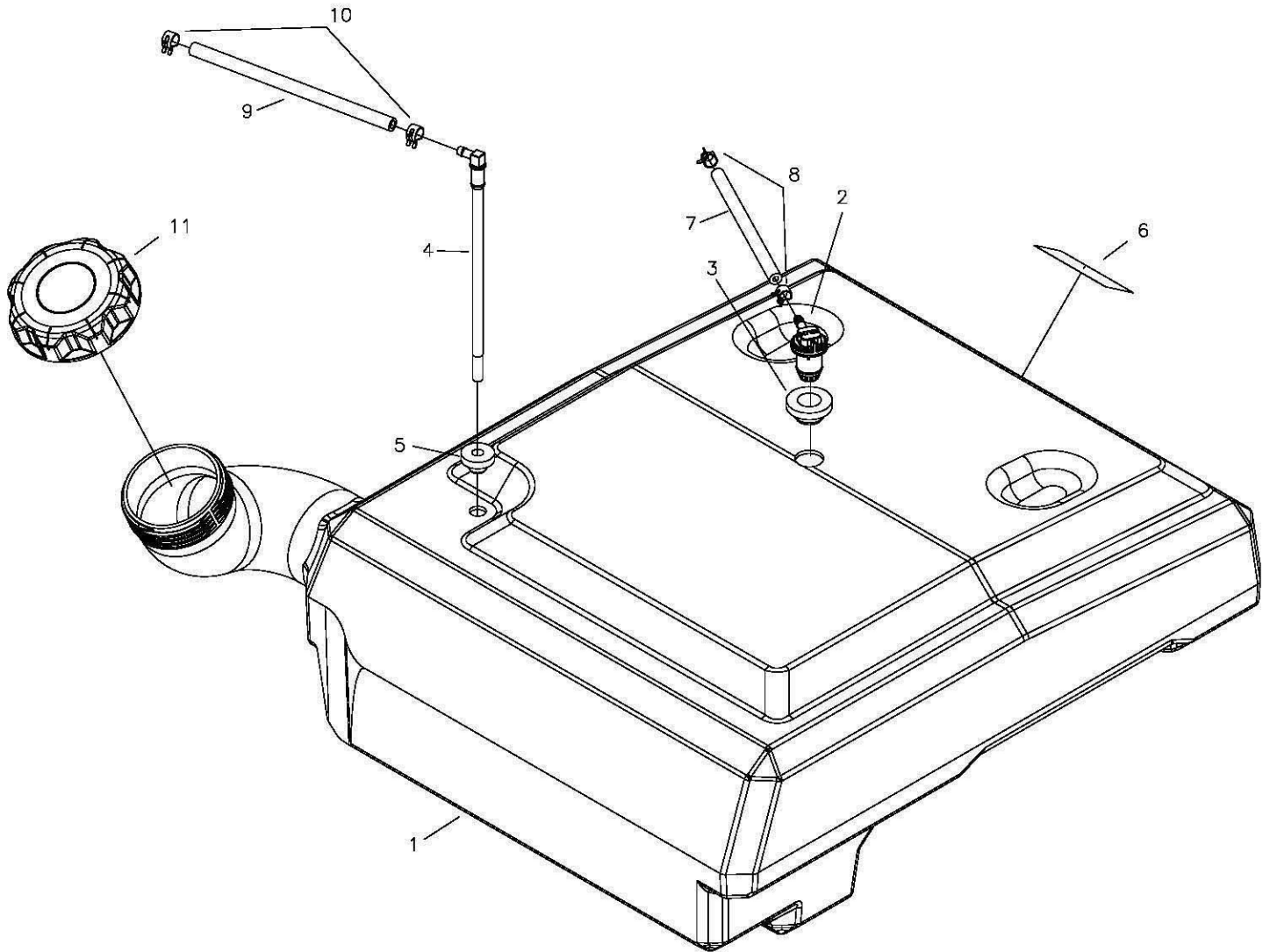
R.O.P.S. ASSEMBLY (H-2778) & RELATED PARTS



ITEM	PART #	QTY.	DESCRIPTION	ITEM	PART #	QTY.	DESCRIPTION
1	709-144W	1	ARM REST WLDT, RH	9	F-2090	6	TOP LOCK NUT, 1/2-13 GR.C
2	709-145W	1	ARM REST WLDT, LH	10	H-2826	2	PLATE, LOWER SPACER
3	H-2799	2	PAD, ARM REST	11	F-2168	2	HHCS, 1/2-13 x 3", GR.5
4	F-2153	4	FHCS, 5/16-18x2-3/4", YZ, GR.5	12	F-2169	2	HHCS, 1/2-13 x 2-1/2", GR.5
5	F-2063	4	NUT, 5/16-18 NYLOC, FLANGED	13	F-2093	2	PULL PIN, 1/2" w/PLASTIC KNOB
6	F-2120	4	FHCS, 5/16-18 x 3/4", YZ, GR.5	14	H-2701	2	SPRING
7	F-2167	2	HHCS, 1/2-13 x 3-1/2", GR.5	15	H-2700	4	POLYURETHANE CHANNEL
8	F-2170	8	FW, 1/2Ø				

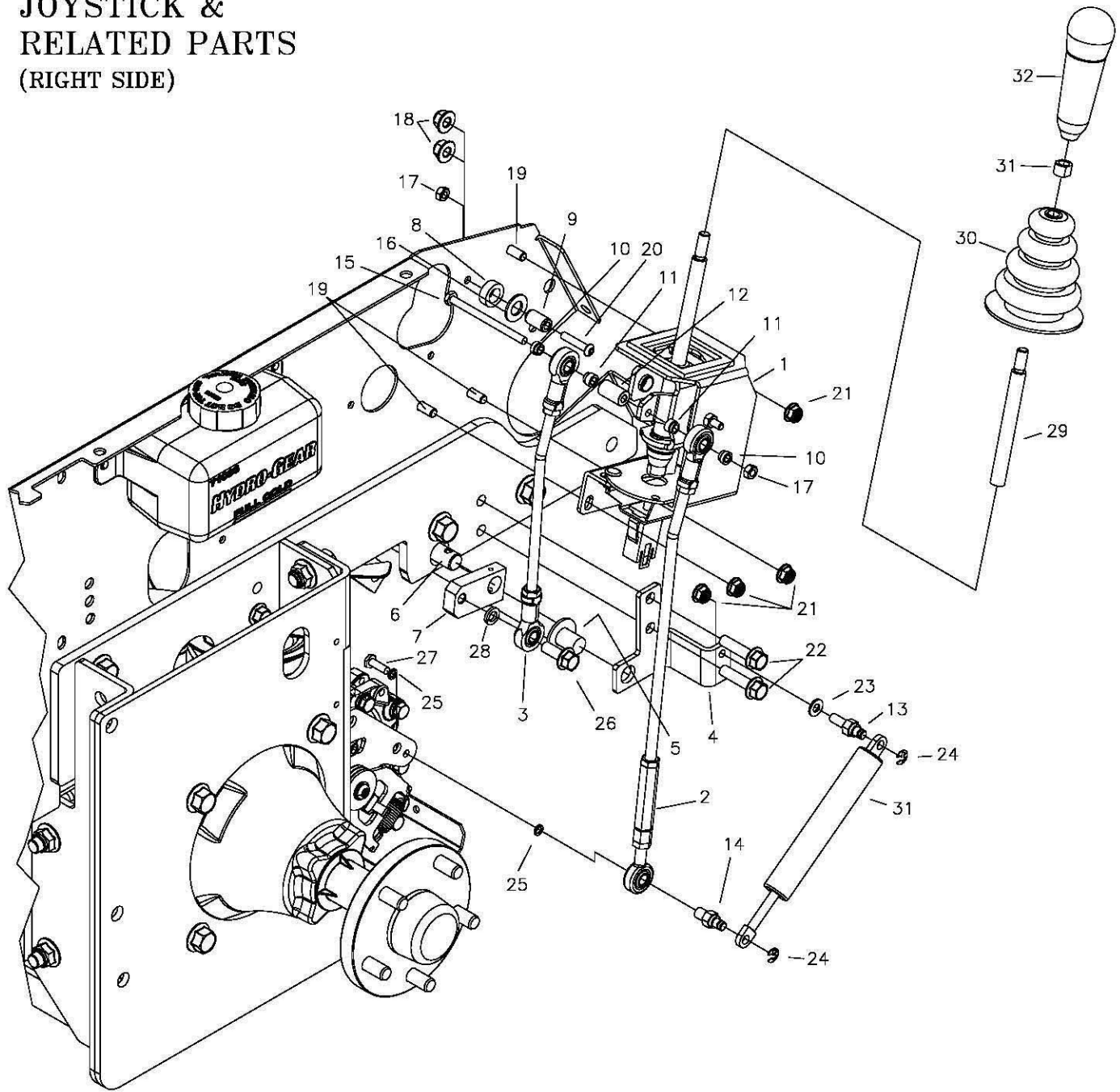
FUEL TANK ASSEMBLY H-2726

(ALL PARTS EXCEPT #11)



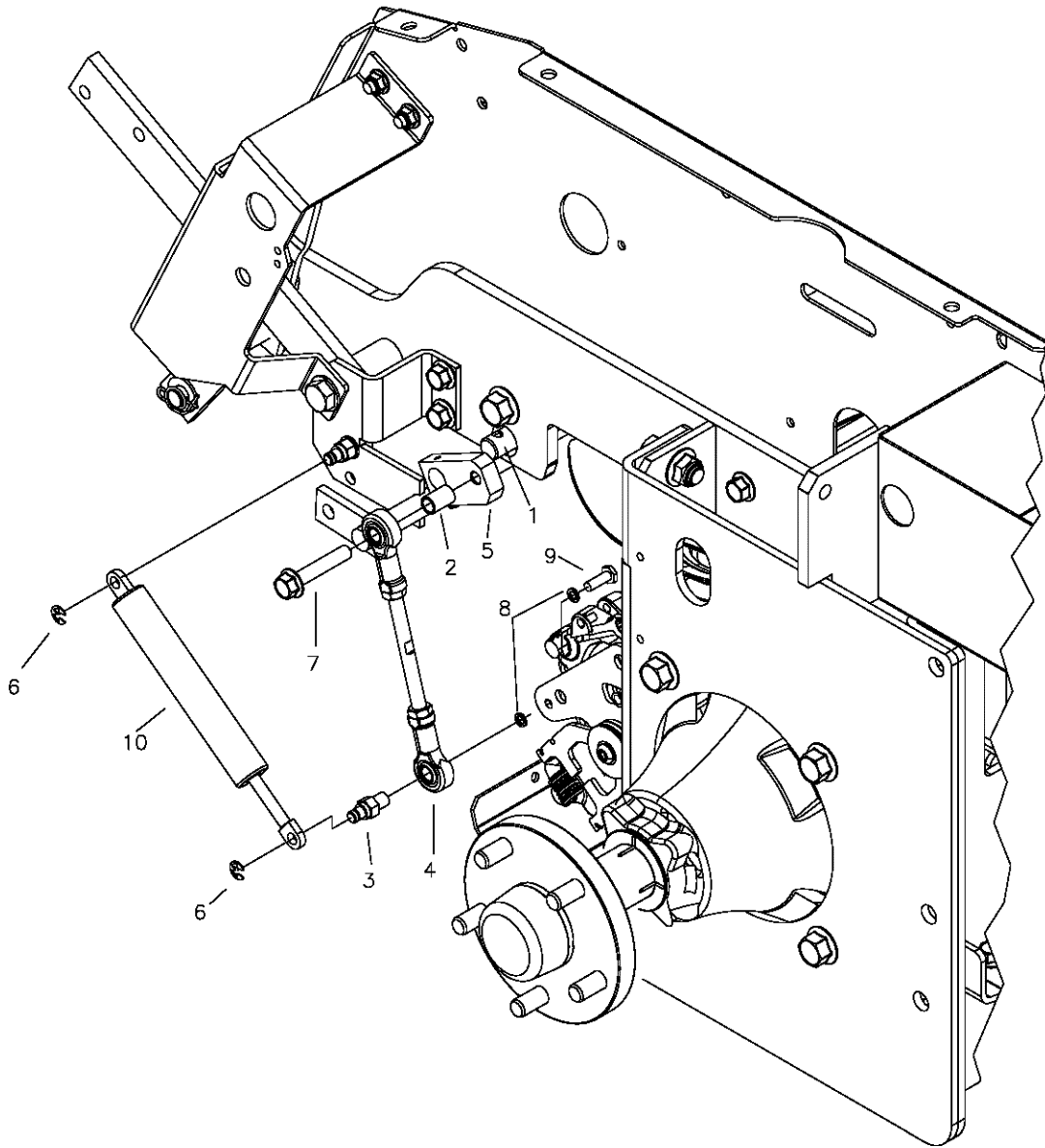
ITEM	PART #	QTY.	DESCRIPTION	ITEM	PART #	QTY.	DESCRIPTION
1	-----	1	FUEL TANK, ASS'Y	7	H-2697	4.0ft	HOSE, FUEL, .188" I.D.x.406" O.D.
2	H-2831	1	KELCH REMOTE VENT	8	H-2698	2	CLAMP, .406" O.D. FUEL LINE
3	H-2679	1	KELCH REMOTE VENT GROMMET	9	H-1648	4.0ft	HOSE, FUEL, 1/4" I.D.x1/2" O.D.
4	H-2741	1	GROMMET, PICK UP TUBE	10	H-1687	2	CLAMP, 1/2" O.D. FUEL LINE
5	H-2742	1	PICK UP TUBE	11	H-2743	1	RATCHET CAP w/TETHER, 3.5 DIA
6	P-12922	1	CARB/EPA LABEL				

JOYSTICK & RELATED PARTS (RIGHT SIDE)



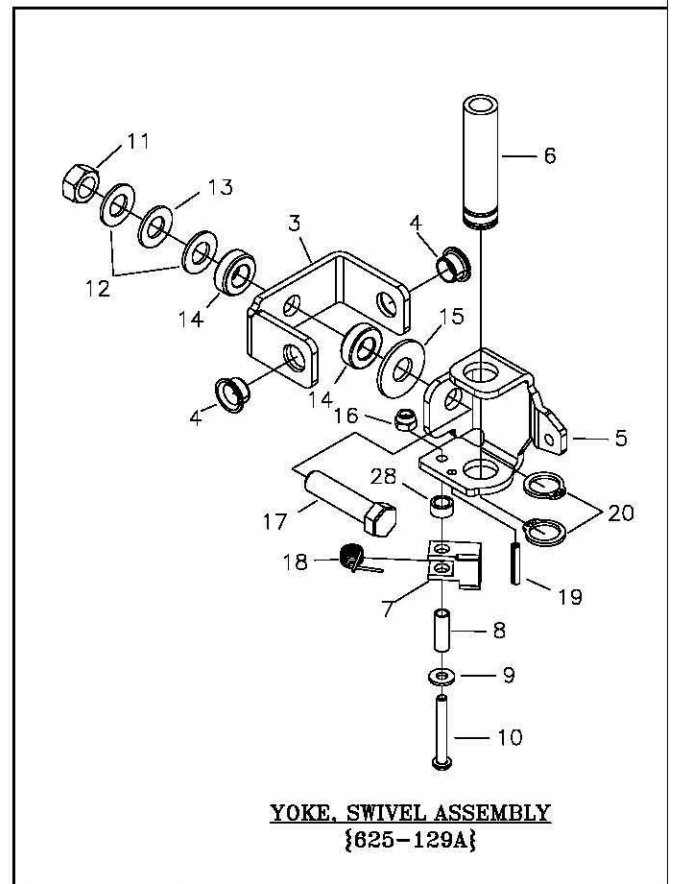
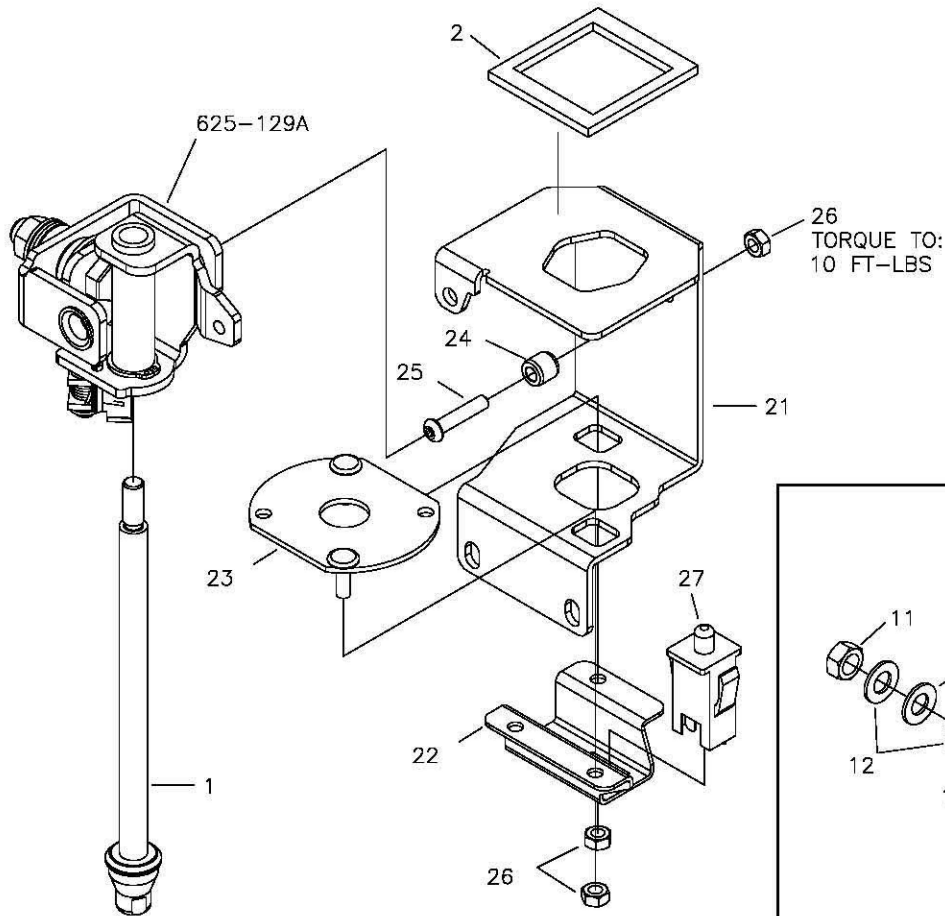
ITEM	PART #	QTY.	DESCRIPTION	ITEM	PART #	QTY.	DESCRIPTION
1	325-152A	1	JOYSTICK ASSEMBLY	18	F-2151	2	NUT, 3/8-16 NYLOC, FLANGED
2	709-131P	1	LINKAGE, OUTER, JS	19	F-2120	3	FHCS, 5/16-18 x 3/4", YZ, GR5
3	709-132P	1	LINKAGE, INNER, JS	20	F-2103	1	BUTTON SHCS, 1/4-20 x 1", CZ
4	709-083P	1	BRACKET-ANCHOR, DAMPER	21	F-2063	4	NUT, 5/16-18 NYLOC, FLANGED
5	709-116W	1	BRAKE ROD WLDT	22	F-2147	2	FHCS, 3/8-16x1-1/2", YZ, GR5
6	709-084P	1	HYDRO SHIFT ROD	23	F-1009-01	1	1/4" FLAT WASHER
7	625-122A	1	ARM, SWIVEL, S/A	24	F-1610	2	E-RING FOR 1/4" SHAFT
8	625-126P	1	SPACER JOYSTICK, PANEL	25	F-1019-01	2	1/4" LOCKWASHER
9	625-119P	1	PIN, PIVOT, JS, LONG	26	F-2141	1	FHCS, 3/8-16 x 1", YZ, GR5
10	625-116P	2	BUSHING, .375 ROD END, SHORT	27	F-1015-03	1	1/4-20 x 3/4", CAPSCREW
11	625-107P	2	BUSHING, .375 ROD END, LONG	28	F-1019-03	1	3/8" LOCKWASHER
12	625-100P	1	TUBE, PIVOT, JOYSTICK	29	625-143P	1	EXTENSION, JOYSTICK
13	638-028P	1	DAMPER BOLT	30	H-1991	1	BOOT
14	663-051P	1	DAMPER STUD	31	H-2765	1	NUT, JOYSTICK
15	F-1020-01	1	1/4-20 x 3-1/2" CAPSCREW	32	H-2764	1	HANDLE, JOYSTICK
16	F-1521	1	1/2" WASHER, CUSTOM				
17	F-1005-01	2	1/4-20 LOCK NUT				

**JOYSTICK &
RELATED PARTS
(LEFT SIDE)**



ITEM	PART #	QTY.	DESCRIPTION	ITEM	PART #	QTY.	DESCRIPTION
1	709-084P	1	HYDRO SHIFT ROD	7	F-2126	1	FHCS, 3/8-16 x 2", YZ, GR5
2	707-073P	1	STAND-OFF, LINKAGE MOUNT	8	F-1019-01	2	1/4" LOCKWASHER
3	663-051P	1	DAMPER STUD	9	F-1015-03	1	1/4-20 x 3/4" CAPSCREW
4	659-127P	1	LINKAGE ROD	10	H-2467	1	DUAL ACTION DAMPER
5	625-122A	1	ARM, SWIVEL, S/A				
6	F-1610	2	E-RING FOR 1/4" SHAFT				

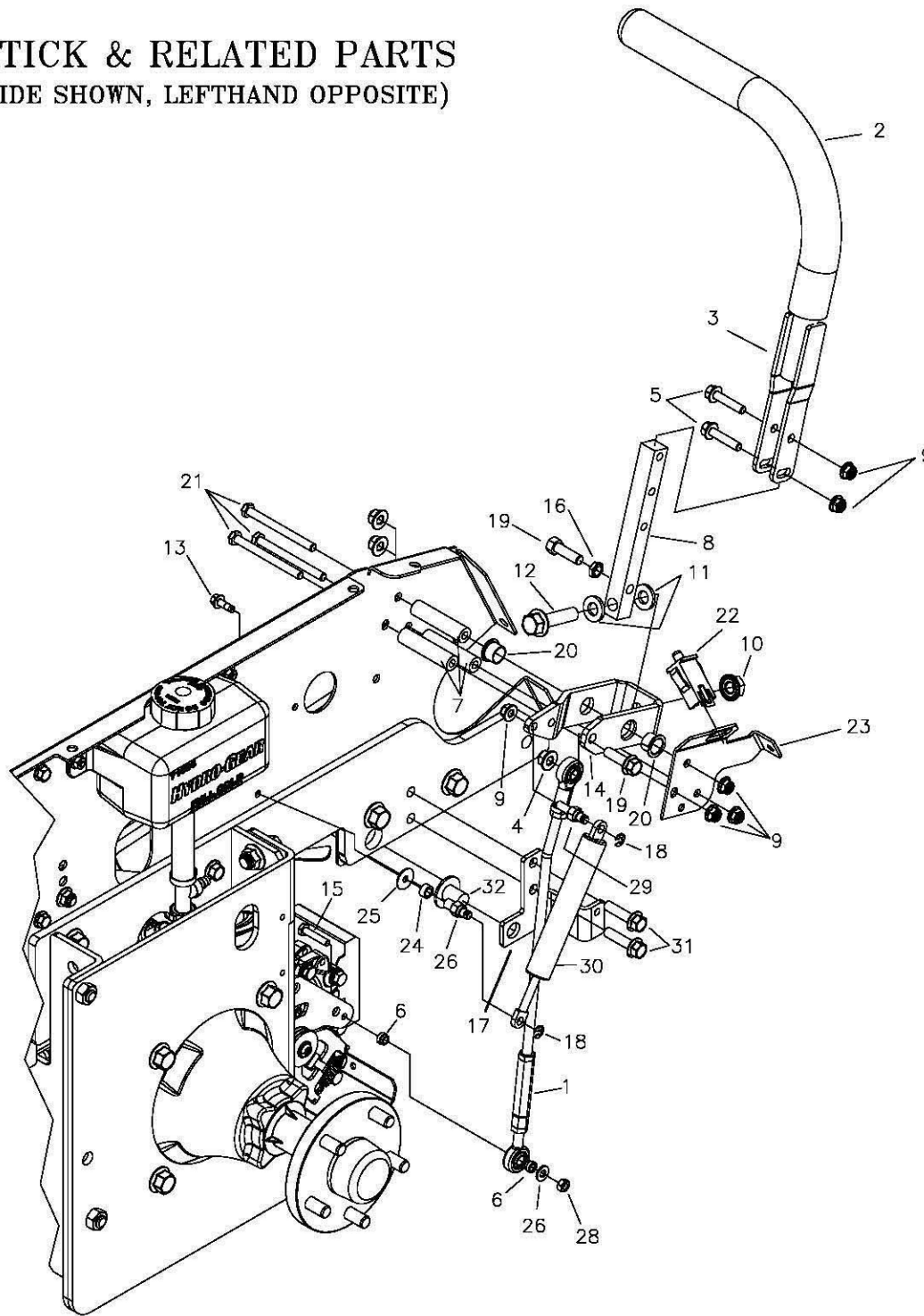
JOYSTICK ASSEMBLY 625-152A



ITEM	PART #	QTY.	DESCRIPTION	ITEM	PART #	QTY.	DESCRIPTION
1	709-150A	1	ROD ASSEMBLY	15	F-1009-05	1	1/2" FLAT WASHER
2	H-1947	1	GASKET, FOAM, JOYSTICK	16	F-2137	1	NUT, #12-24, NYLOCK
3	625-097P	1	PIVOT, JOYSTICK (PART OF 625-128A)	17	F-1293	1	1/2-13 x 2" CAPSCREW
4	D-3784	2	BUSHING, FLANGED (PART OF 625-128A)	18	H-2710	1	SPRING, DETENT, JOYSTICK
5	625-096P	1	YOKE, SWIVEL, JOYSTICK	19	F-1503	1	3/16 x 1" SPIRAL PIN
6	625-099P	1	TUBE, GUIDE, CONTROL ROD	20	H-2705	2	RING, DETENT, .75 EXT.
7	625-103P	1	TAB, CAM DETENT	21	625-095P	1	HOUSING, JOYSTICK
8	625-124P	1	TUBE-SPACER, DETENT CAM	22	259-285P	1	MOUNT, SWITCH
9	F-2136	1	WASHER, FLAT, #12 PLAIN	23	625-127W	1	NEUTRAL PLATE, WLDT
10	F-2135	1	SCR, PANHD, PHILPS, #12-24x1-3/4"	24	625-106P	1	PIN, PIVOT, JOYSTICK
11	F-1005-05	1	1/2-13 STOVER NUT	25	F-2103	1	BUTTON SHCS, 1/4-20 x 1", CZ
12	F-1521	2	1/2" WASHER, CUSTOM	26	F-1005-01	3	1/4-20 LOCK NUT
13	H-2704	1	SPRING, BELLEVILLE, .50x1x.073	27	E-6474	1	SWITCH, SNAP MOUNT
14	D-3857	2	THRUST BEARING	28	625-125P	1	SPACER, CAM DETENT

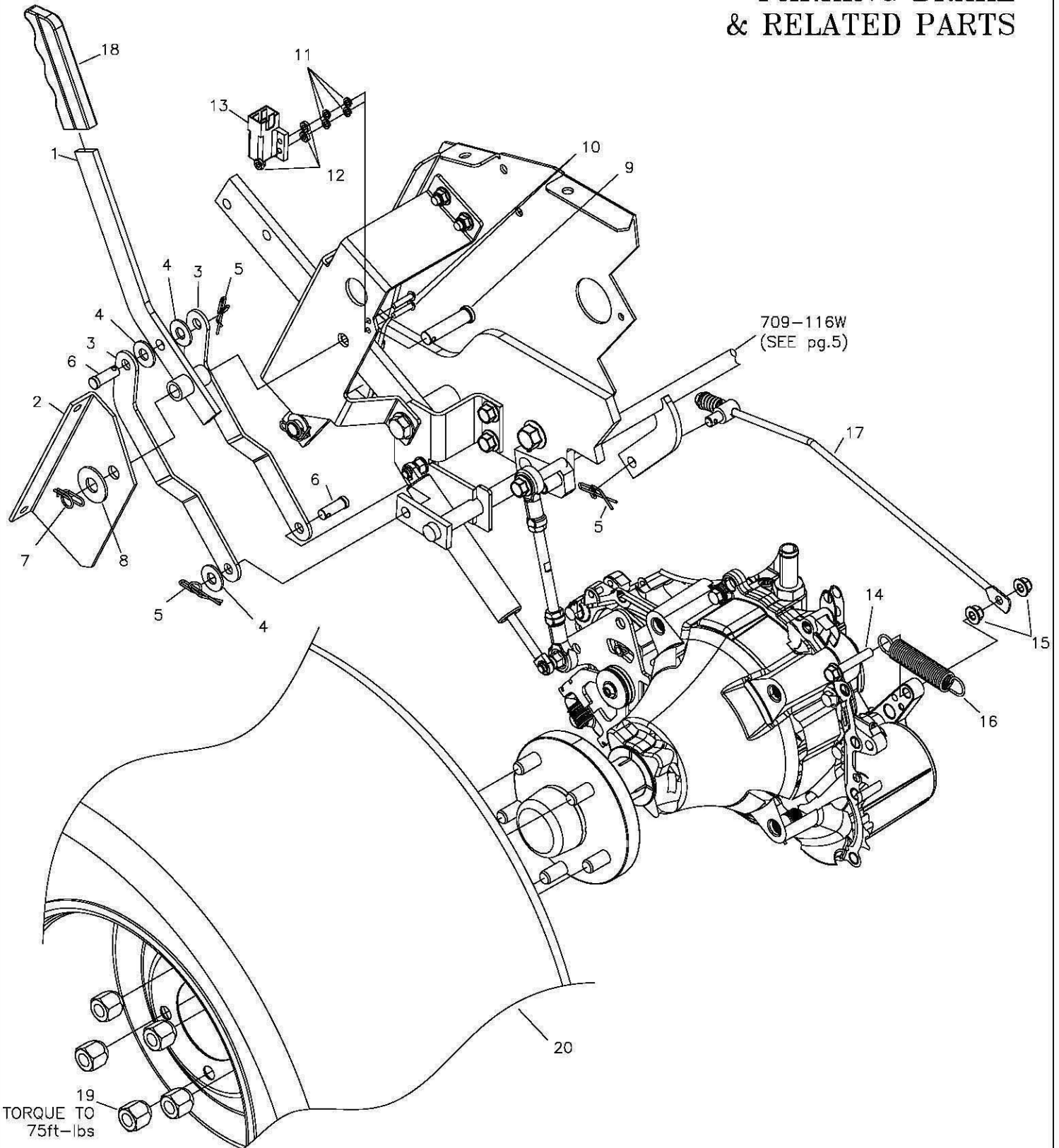
TWINSTICK & RELATED PARTS

(RIGHT SIDE SHOWN, LEFTHAND OPPOSITE)



ITEM	PART #	QTY.	DESCRIPTION	ITEM	PART #	QTY.	DESCRIPTION
1	H-2794	1	LINKAGE, OUTER	18	F-1610	2	E-RING FOR 1/4" SHAFT
2	H-2739	1	GRIP, 15", CLOSED END	19	F-1307	2	3/8-16 X 1 1/4" CAPSCREW
3	659-249W	1	DUAL LEVER CONTROL	20	D-3730	2	FLANGED BUSHING 5/8" BORE
4	F-2151	1	NUT, 3/8-16 NYLOC, FLANGED	21	F-2058	3	5/16-18 x 3 1/2" CAPSCREW
5	F-2129	2	FHCS, 5/16-18x1-1/2" w/PATCH	22	E-6474	1	SWITCH, SNAP MOUNT
6	625-116P	2	BUSHING, .375 ROD END, SHORT	23	647-242P	1	MOUNTING BRACKET (RH)
7	659-252P	3	TUBE SPACER	—	647-243P	1	MOUNTING BRACKET (LH)
8	659-247P	1	LOWER SHIFT BLOCK	24	625-125P	1	SPACER, CAM DETENT
9	F-2063	6	5/16-18 NYLOC NUT	25	F-2097	1	1/4" FENDER WASHER
10	F-2060	2	1/2-13 NUT, FLANGE LOCK	26	663-051P	1	DAMPER STUD, FEMALE
11	606-151P	2	WASHER, NYLON 1/2 ID x 1/8"	27	638-029P	1	DAMPER BOLT, 1/4-20
12	F-2128	1	FHCS, 1/2-13 x 2" GR5	28	F-1005-01	1	1/4-20, LOCK NUT
13	F-2119	1	FHCS, 1/4-20x3/4", YZ, GR5	29	638-028P	1	DAMPER BOLT, 5/16-18 x 3/4"
14	659-243P	1	SHIFTING YOKE	30	H-2467	1	DUAL ACTION DAMPER
15	F-1539	1	1-4-20 x 1-1/4" CAPSCREW	31	F-2147	2	FHCS, 3/8-16x1-1/2", YZ, GR5
16	F-1486	2	3/8-16 JAM NUT	32	709-116W	1	BRAKE ROD, WLDT
17	709-083P	1	BRACKET-ANCHOR, DAMPER				

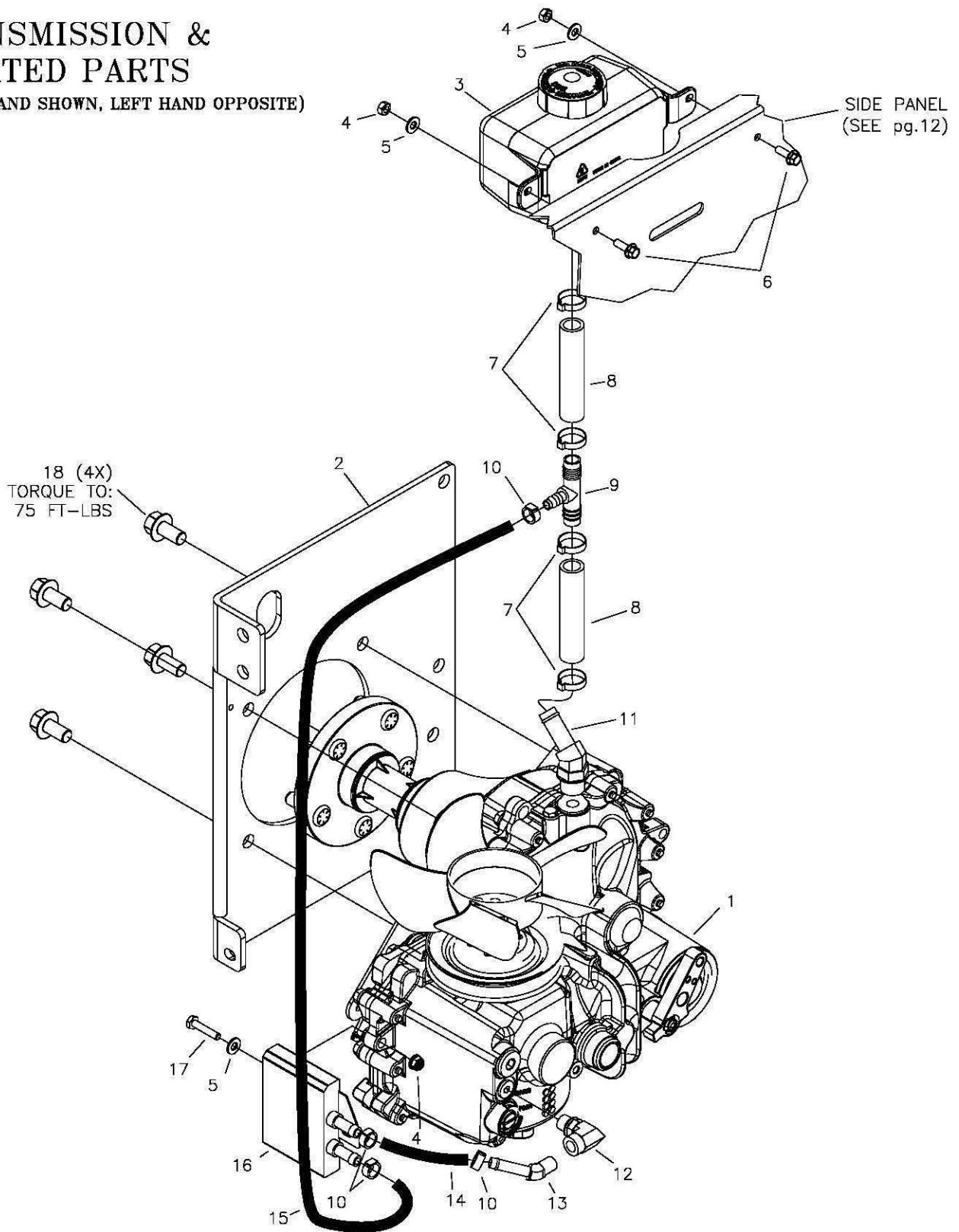
PARKING BRAKE & RELATED PARTS



ITEM	PART #	QTY.	DESCRIPTION	ITEM	PART #	QTY.	DESCRIPTION
1	709-118W	1	BRAKE HANDLE WLDT	11	F-1112	4	LOCKWASHER, #10 SPRING
2	709-109P	1	BRAKE LEVER MOUNTING ANGLE	12	F-1448	3	10-32 NYLOC, NUT
3	709-114P	2	LINK, BRAKE	13	E-6297	1	BRAKE SWITCH
4	F-1009-02	3	5/16" FLAT WASHER	14	F-2123	2	FHCS, 5/16-18x1-3/4", YZ, GR5
5	F-1492	3	5/16-3/8 RUE RING	15	F-2063	4	NUT, 5/16-18 NYLOC, FLANGED
6	F-1691	2	3/8" x 1" CLEVIS PIN	16	H-1635	2	SPRING, EXT, 3/4"ODx4"OAL
7	H-2239	1	1/2" RUE RING	17	709-135P	2	BRAKE LINK ROD ASEMBLY
8	F-1521	1	1/2" WASHER, CUSTOM	18	H-1926	1	GRIP
9	F-1897	1	1/2" x 2-1/4" CLEVIS PIN	19	F-1499	5	1/2-20 LUG NUT
10	F-1022-28	2	10-32 x 7/8" MACHINE SCREW	20	D-3894	1	TIRE, 26x14.00-12

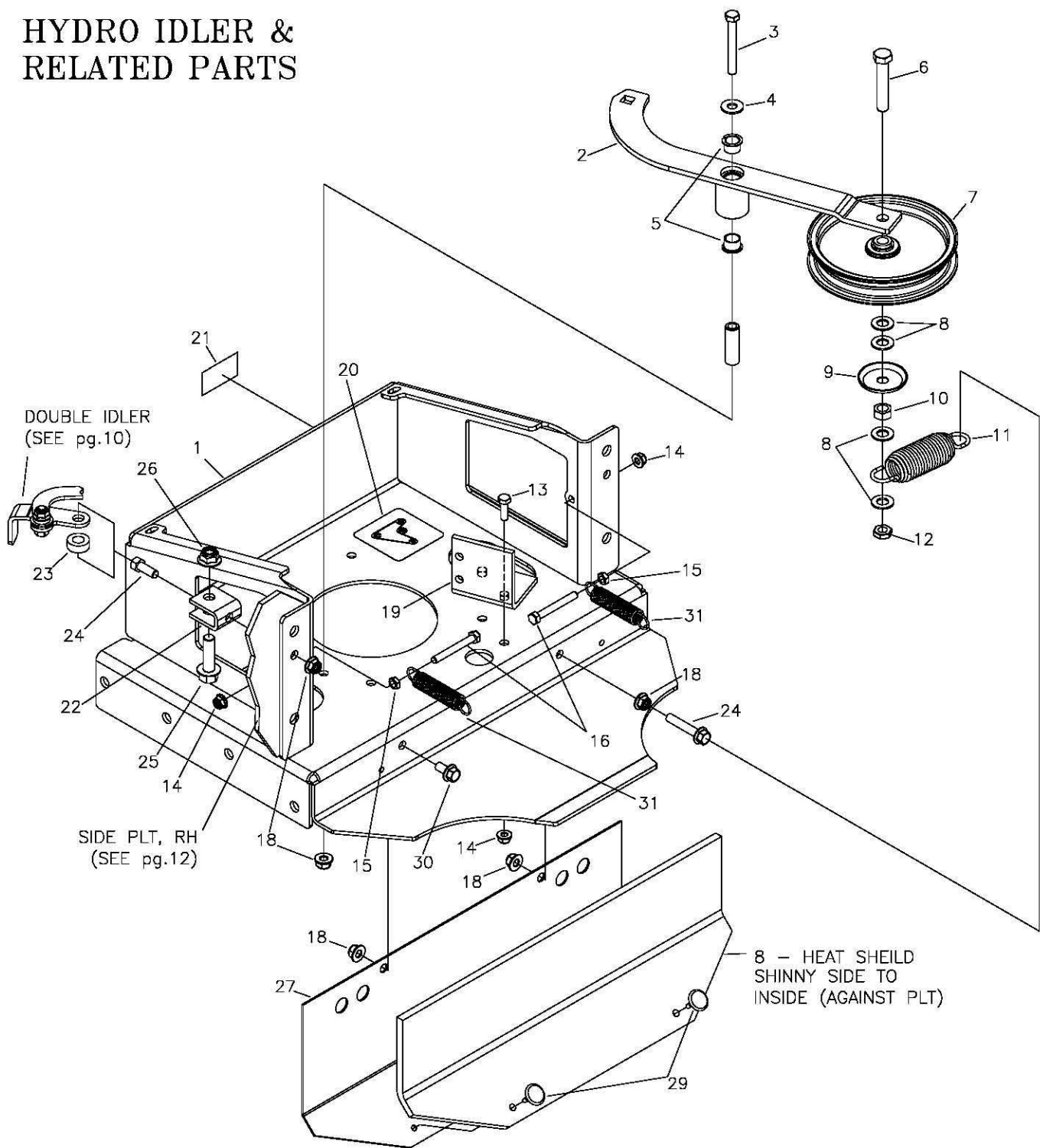
TRANSMISSION & RELATED PARTS

(RIGHT HAND SHOWN, LEFT HAND OPPOSITE)



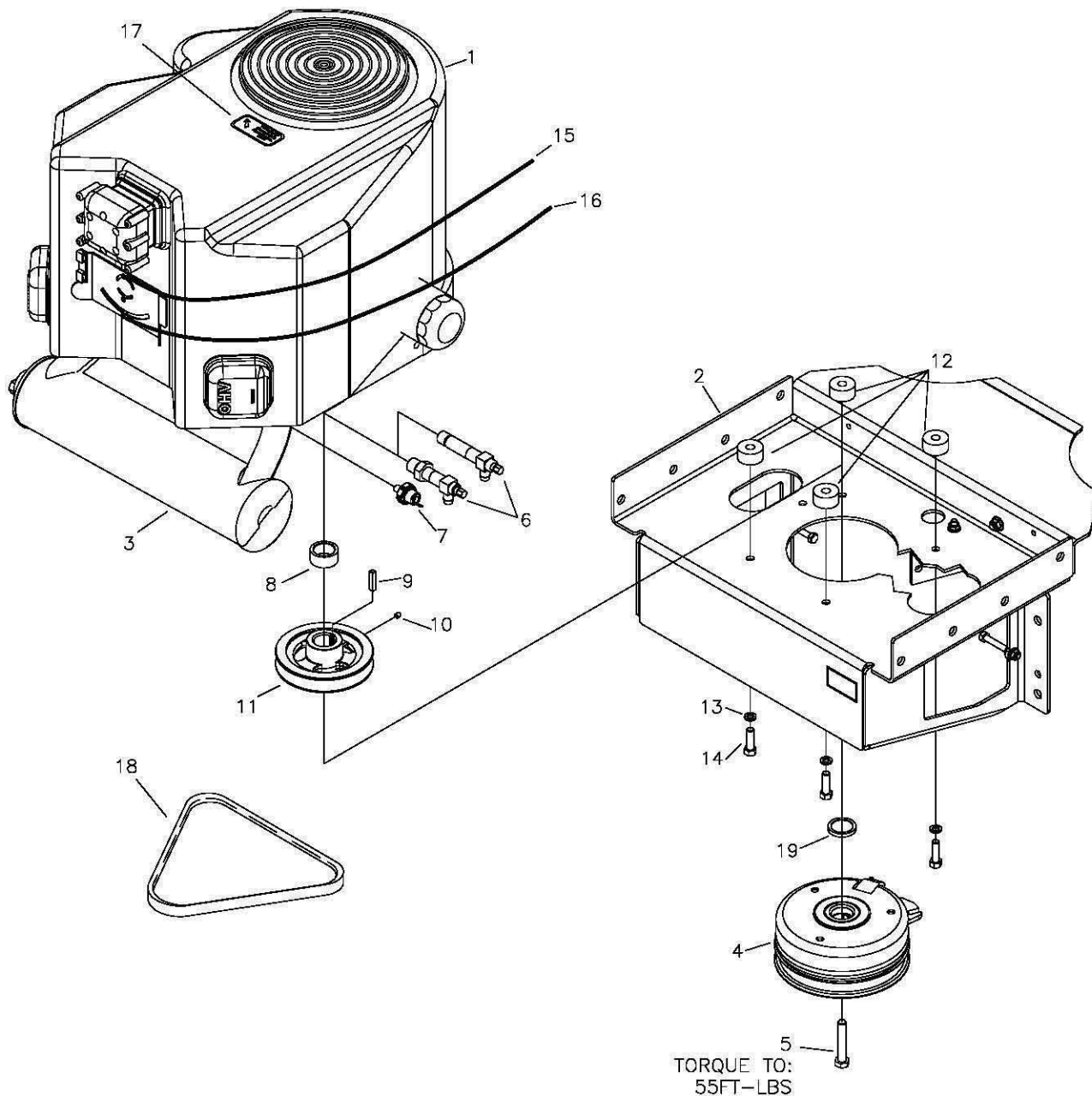
ITEM	PART #	QTY.	DESCRIPTION	ITEM	PART #	QTY.	DESCRIPTION
1	D-3875-01	1	TRANSMISSION, ZT5400, LH	10	H-2840	8	HOSE CLAMP, 11/16"
-	D-3875-02	1	TRANSMISSION, ZT5400, RH	11	H-2779	2	FITTING, 45 DEG., HOSE BARB
2	709-095W	1	HYDRO MOUNT WLDT, LH	12	H-2782	2	90 DEG., STRT THD-FEMALE PIPE EL
-	709-096W	1	HYDRO MOUNT WLDT, RH	13	H-2781	2	45 DEG., MALE PIPE, HOSE FITTING
3	H-2735	2	TANK, HYDRO EXP., HYDROGEAR	14	709-163P	2	HOSE, OIL COOLER, 3-3/8" LG
4	F-2132	6	NUT, 1/4-20 NYLOC, FLANGED	15	709-162P	2	HOSE, OIL COOLER, 32" LG
5	F-1009-01	6	1/4" FLAT WASHER	16	H-2780	2	COOLER, OIL, STACKED PLT, 3"x4"
6	F-2162	4	FHCS, 1/4-20 x 3/4", YZ, GR5	17	F-1539	2	1/4-20 x 1-1/4", CAPSCREW
7	H-2841	8	HOSE CLAMP, 7/8"	18	F-2140	8	FHCS, 1/2-13x1-1/2", YZ, GR5
8	709-164P	4	HOSE, OIL COOLER, 4" LG				
9	H-2033	2	TEE, 5/8x5/8x3/8, HOSE, NYLON				

HYDRO IDLER & RELATED PARTS



ITEM	PART #	QTY.	DESCRIPTION	ITEM	PART #	QTY.	DESCRIPTION
1	709-009W	1	MOTER MOUNT WLDT	17	F-2124	1	FHCS, 3/8-16 x 3/4", YZ, GR5
2	709-048A	1	IDLER ARM ASSEMBLY	18	F-2151	5	NUT, 3/8-16 NYLOC, FLANGED
3	F-1537	1	3/8-16 x 3" CAPSCREW	19	709-106P	1	CLUTCH STOP
4	F-1009-03	1	3/8" FLAT WASHER	20	P-12918	1	DECAL, HYDRO BELT ROUTING
5	D-3730	2	BUSHING, FLANGED (PART OF 709-048A)	21	P-10777	1	PATENT NUMBER DECAL
6	F-1668	1	1/2-13 x 2-3/4", CAPSCREW	22	661-015P	1	SHACKLE
7	D-3903	1	PULLEY, FLAT IDLER, 6"	23	660-038P	1	3/8" SPACER
8	F-1521	3	1/2" WASHER, CUSTOM	24	F-1307	2	3/8-16 x 1-1/4", CAPSCREW
9	620-201P	1	WASHER, BEARING CAP	25	F-2154	1	FHCS, 1/2-13x1-3/4", YZ, GR5
10	F-1005-05	1	1/2-13 STOVER NUT	26	F-2152	1	NUT, 1/2-13 NYLOC, FLANGED
11	H-2619	1	SPRING, 5"x1-1/2", TAPERED ENDS	27	709-154P	1	PLATE, FILLER, REAR
12	F-1966	1	1/2-13 THIN NYLOC NUT	28	709-159P	1	HEAT SHIELD
13	F-1015-15	1	5/16-18 x 1" CAPSCREW	29	F-2165	2	FASTENER, PUSH IN FIR TREE .25x1x1
14	F-2063	3	NUT, 5/16-18 NYLOC, FLANGED	30	H-1635	2	SPRING (SEE pg.24)
15	F-1125	2	5/16-18 NUT				
16	F-1893	2	5/16-18 x 2-1/2", CAPSCREW				

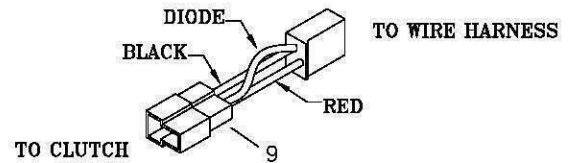
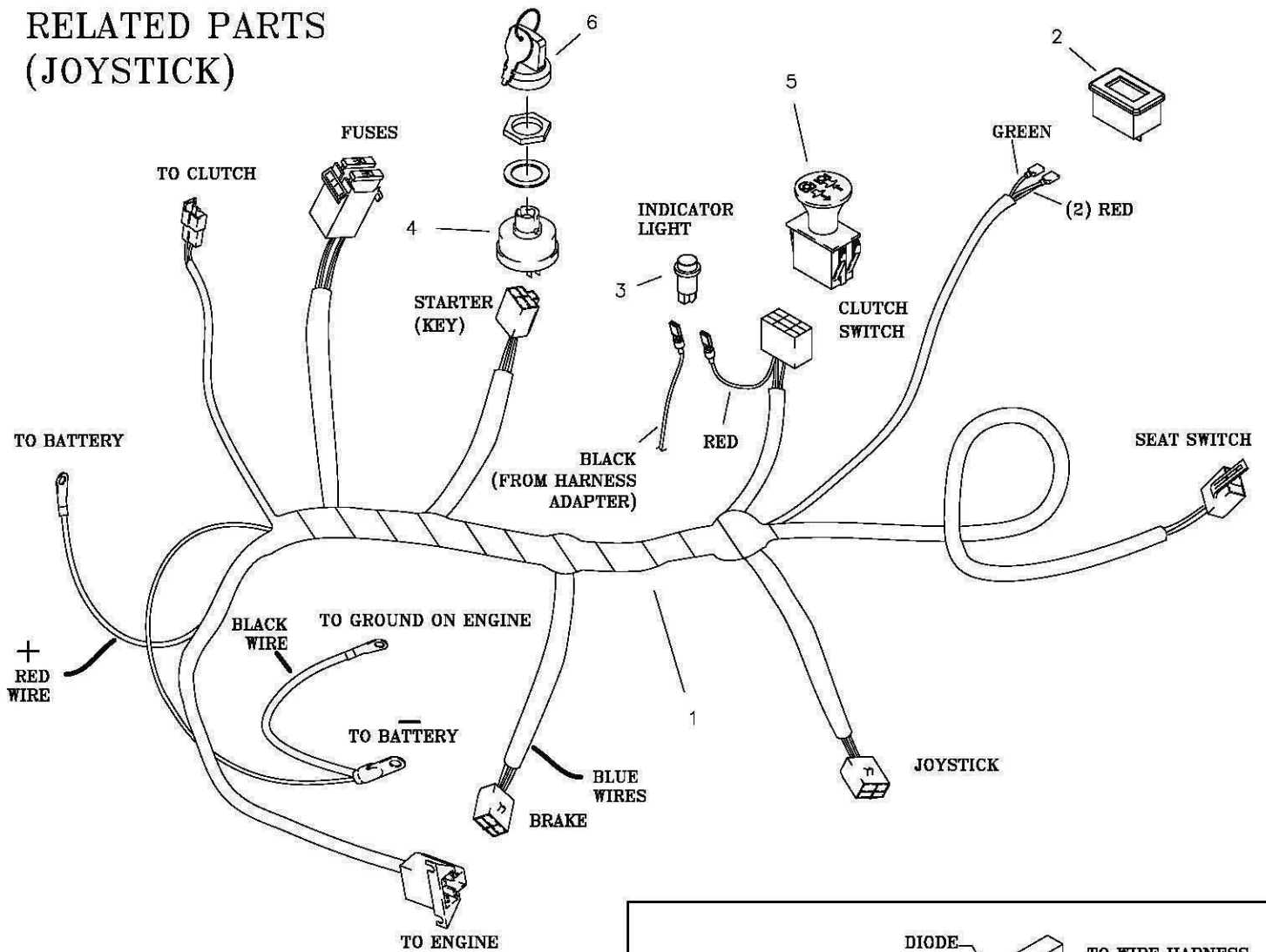
ENGINE & RELATED PARTS



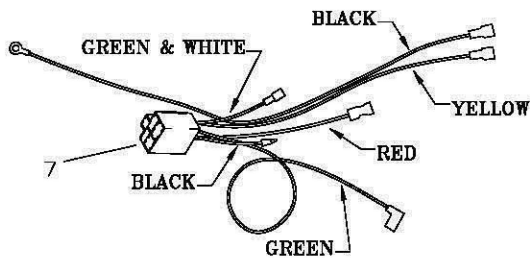
TORQUE TO:
55FT-LBS

ITEM	PART #	QTY.	DESCRIPTION	ITEM	PART #	QTY.	DESCRIPTION
1	M-5384	1	ENGINE, 25.5HP KAWASAKI	6	H-2589	1	OIL DRAIN (KOHLER ONLY)
-	M-5360	1	ENGINE, 35HP KAWASAKI	-	H-2590	1	OIL DRAIN (KAWASAKI ONLY)
-	M-5335	1	ENGINE, 27HP COMMAND KOHLER	7	E-6307	1	OIL PRESSURE SWITCH (KAW ONLY)
-	M-5396	1	ENGINE, 29HP E.F.I. KOHLER	8	F-2043	1	SPACER (25.5HP KAWASAKI ONLY)
2	709-009W	1	MOTOR MOUNT WLDT	9	621-113P	1	1/4"SQ x 1-1/4" KEY
3	H-2775	1	MUFFLER, 25.5HP KAWASAKI	10	F-1228	1	1/4-20x1/4" SET SCREW NYLOC
-	H-2777	1	MUFFLER, 35HP KAWASAKI	11	709-134P	1	PULLEY, MOTOR, 5.245 DIA
-	H-2774	1	MUFFLER, 27HP KOHLER	12	F-2045	4	SPACER (25.5HP KAWASAKI ONLY)
-	H-2776	1	MUFFLER, 29HP KOHLER E.F.I.	13	F-1019-03	4	3/8" LOCKWASHER
4	E-6444	1	CLUTCH, 200ft/lb	14	F-2125	4	HCS, 3/8-16 x 1-1/4"
-	E-6425	1	CLUTCH, 250ft/lb (35HP KAW)	-	F-1015-28	4	HCS, 3/8-16x1-3/4"(25.5HP KAW ONLY)
5	F-2113	1	CAPSCREW, 7/16-20x2-1/2", GR8	15	H-2612	1	THROTTLE CABLE
-	F-1545	1	CAPSCREW, 7/16-20x3", GR5	16	H-2404	1	CHOKE CABLE (NOT REQ'D ON E.F.I.)
			(29HP E.F.I. KOHLER)	17	P-10077-11	1	DECAL "CLEAN DEBRIS"
				18	D-3900	1	HYDRO DRIVE BELT, B-71
				19	709-161P	1	SPACER, ENGINE PULLEY
							(25.5HP KAW, 27HP KOH & 29HP E.F.I. KOH)

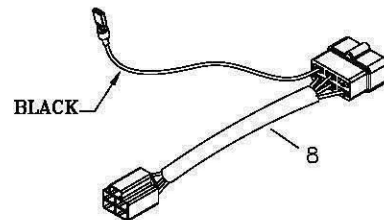
WIRE HARNESS & RELATED PARTS (JOYSTICK)



CLUTCH SPIKE SUPPRESSOR
 {ONLY REQ'D ON 29HP KOHLER E.F.I. ENGINE}



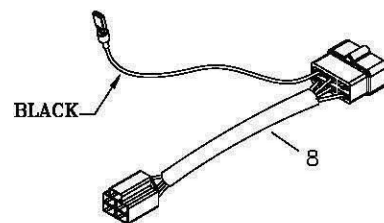
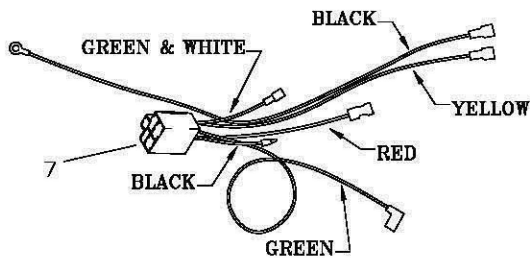
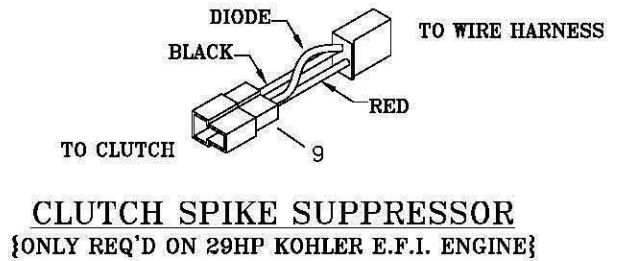
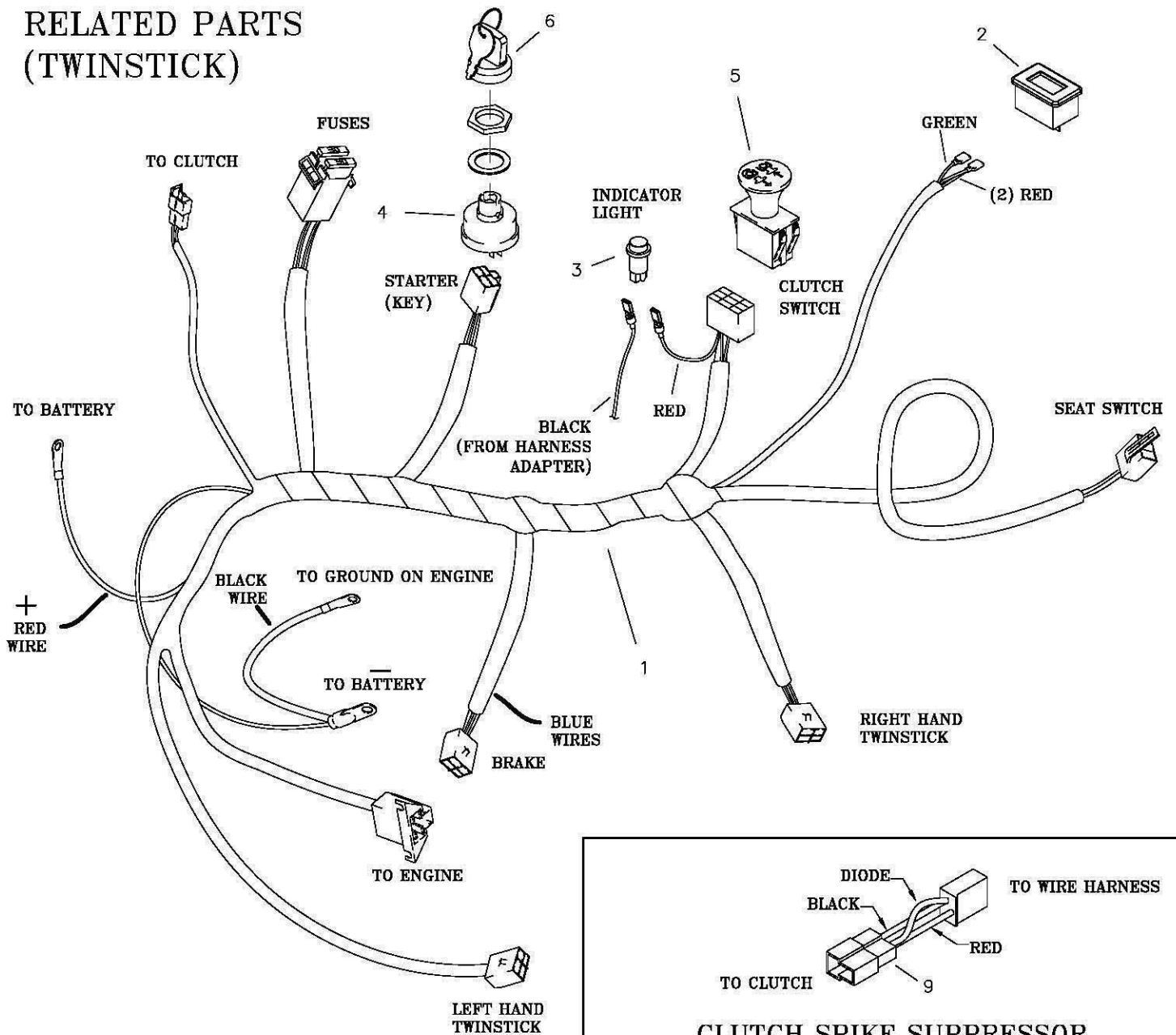
HARNESS ADAPTER
 {ONLY REQ'D ON KAWASAKI ENGINES}



HARNESS ADAPTER
 {ONLY REQ'D ON 29HP KOHLER E.F.I. ENGINE}

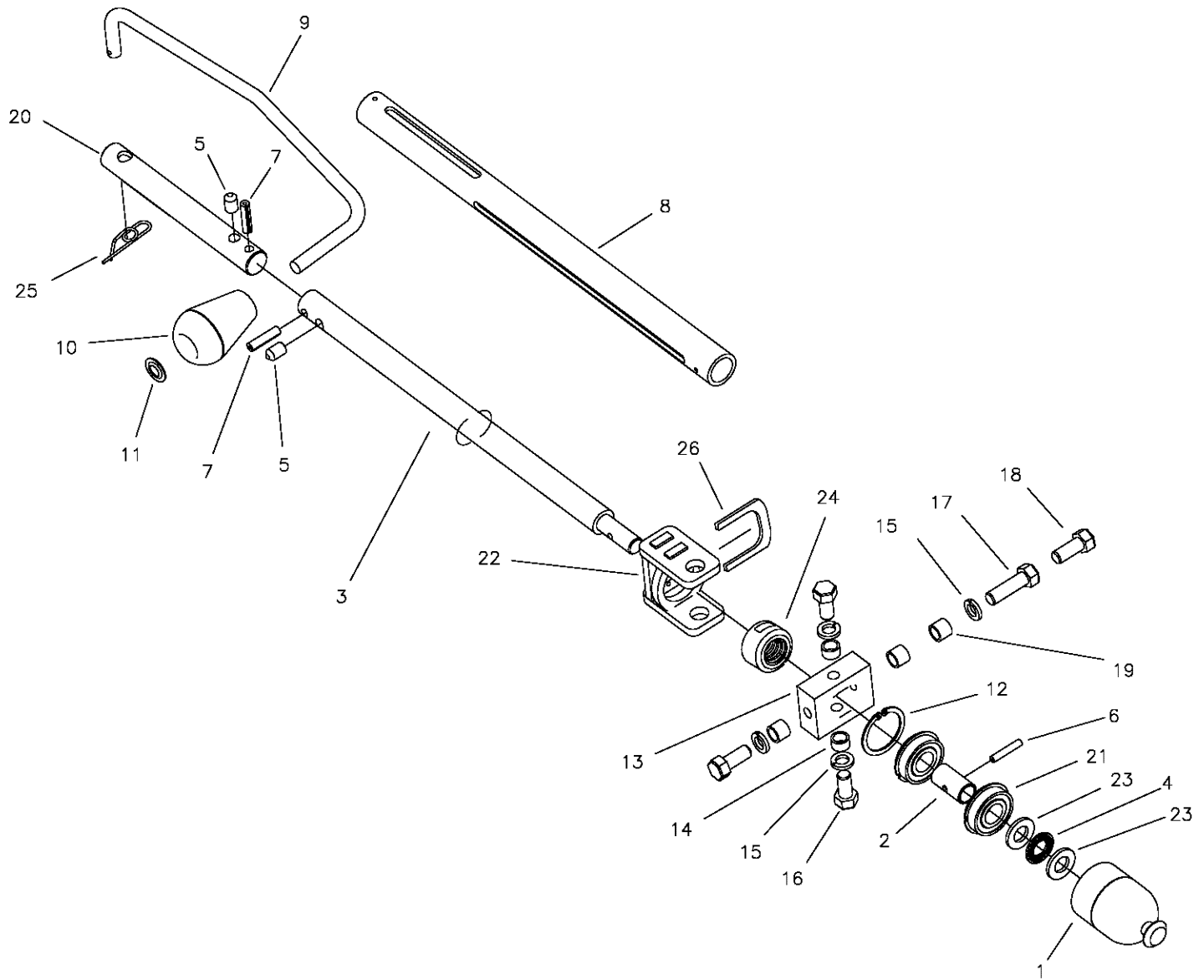
ITEM	PART #	QTY.	DESCRIPTION	ITEM	PART #	QTY.	DESCRIPTION
1	E-6548	1	WIRE HARNESS, JS	6	E-6445	1	KEY, SET
2	E-5878	1	HOUR METER	7	E-6417	1	KAWASAKI HARNESS ADAPTER
3	E-6314	1	INDICATOR LIGHT (E.F.I. ONLY)	8	E-6547	1	KOHLER E.F.I. HARNESS ADAPTER
4	E-5873	1	3 POSITION KEY SWITCH	9	E-6461	1	CLUTCH SPIKE SUPPRESSOR
5	E-6403	1	PTO SWITCH				

WIRE HARNESS & RELATED PARTS (TWINSTICK)



ITEM	PART #	QTY.	DESCRIPTION	ITEM	PART #	QTY.	DESCRIPTION
1	E-6549	1	WIRE HARNESS, TS	6	E-6445	1	KEY, SET
2	E-5878	1	HOUR METER	7	E-6417	1	KAWASAKI HARNESS ADAPTER
3	E-6314	1	INDICATOR LIGHT (E.F.I. ONLY)	8	E-6547	1	KOHLER E.F.I. HARNESS ADAPTER
4	E-5873	1	3 POSITION KEY SWITCH	9	E-6461	1	CLUTCH SPIKE SUPPRESSOR
5	E-6403	1	PTO SWITCH				

JACK ASSEMBLY 629-653A



ITEM	PART #	QTY.	DESCRIPTION	ITEM	PART #	QTY.	DESCRIPTION
1	629-620P	1	JACK END	14	629-549P	2	SPACER
2	629-527P	1	THRUST TUBE	15	F-1019-03	4	3/8" LOCKWASHER
3	629-528P	1	SHAFT, JACK	16	F-1015-23	2	3/8-16 x 3/4" CAPSCREW
4	D-3675	1	THRUST BEARING 1/2 INCH ID	17	F-1307	1	3/8-16 x 1-1/4" CAPSCREW
5	F-1120	2	BALL PLUNGER	18	F-1558	2	3/8-16 x 7/8" CAPSCREW
6	F-1855	1	ROLL PIN, 3/16 X 1	19	629-532P	3	SPACER
7	F-1831	2	3/16 x 1" SPIROL PIN	20	629-564P	1	UPPER HANDLE EXTENSION
8	629-529P	1	EXTENSION TUBE, JACK	21	D-3432	2	BEARING 5/8" I.D. 1-3/8" O.D.
9	629-529P	1	CRANK HANDLE	22	629-621W	1	YOKE WELDMENT
10	H-2343	1	KNOB	23	D-3814	2	BEARING THRUST WASHER .50 ID
11	F-1913	1	PUSH RETAINER 3/8 INCH	24	629-648P	1	3/4-6 ACME NUT (NICKEL)
12	F-2015	1	SNAP RING 1 3/8 INTERNAL	25	F-1492	1	5/16-3/8 RUE RING
13	629-531P	1	JACK BASE PLATE, TIPPED	26	629-647P	1	KEEPER

