

REPAIR PARTS MANUAL

for

COUNTRY
CLIPPER®

JAZZEE

TM

SR225

JAZZEE
PRO

TM

SR375

JAZZEE
PRO
DLX

TM

SR375

COUNTRY CLIPPER

"JAZEE", "JAZEE PRO", AND "PRO DLX"

ZERO TURN RADIUS MOWER

TABLE OF CONTENTS

SECTION 1 – MOWER DECKS AND RELATED PARTS

1. 48" DECK ASSEMBLY
2. 52" DECK ASSEMBLY
3. 60" DECK ASSEMBLY
4. DECK SPINDLE ASSEMBLY
5. DOUBLE IDLER & RELATED PARTS
6. LIFT HANDLE ASSEMBLY & RELATED PARTS
7. LIFT ASSEMBLY & RELATED PARTS
8. TRANSMISSION IDLERS & RELATED PARTS

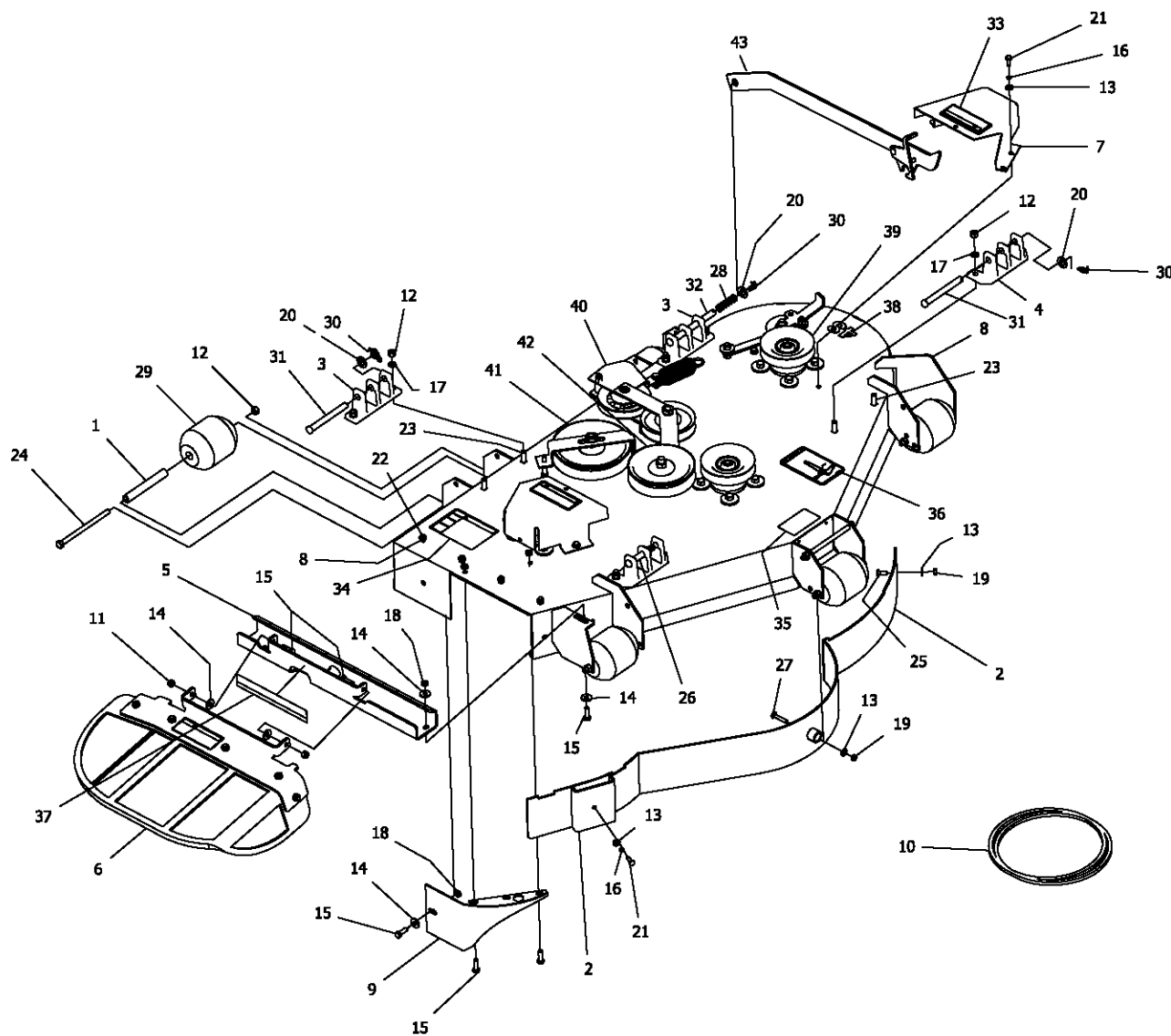
SECTION 2 – TRACTOR FRAME AND RELATED PARTS

9. CASTER WHEEL ASSEMBLY
10. FRAME SIDES & RELATED PARTS - JAZEE SR225
11. FRAME SIDES & RELATED PARTS - JAZEE PRO & PRO DLX SR375
12. FENDER ASSEMBLY
13. SEAT, FOOT DECK ASSEMBLY & RELATED PARTS
14. FRONT STEP ASSEMBLY - JAZEE PRO & PRO DLX SR375

SECTION 3 – TRACTOR DRIVE AND RELATED PARTS

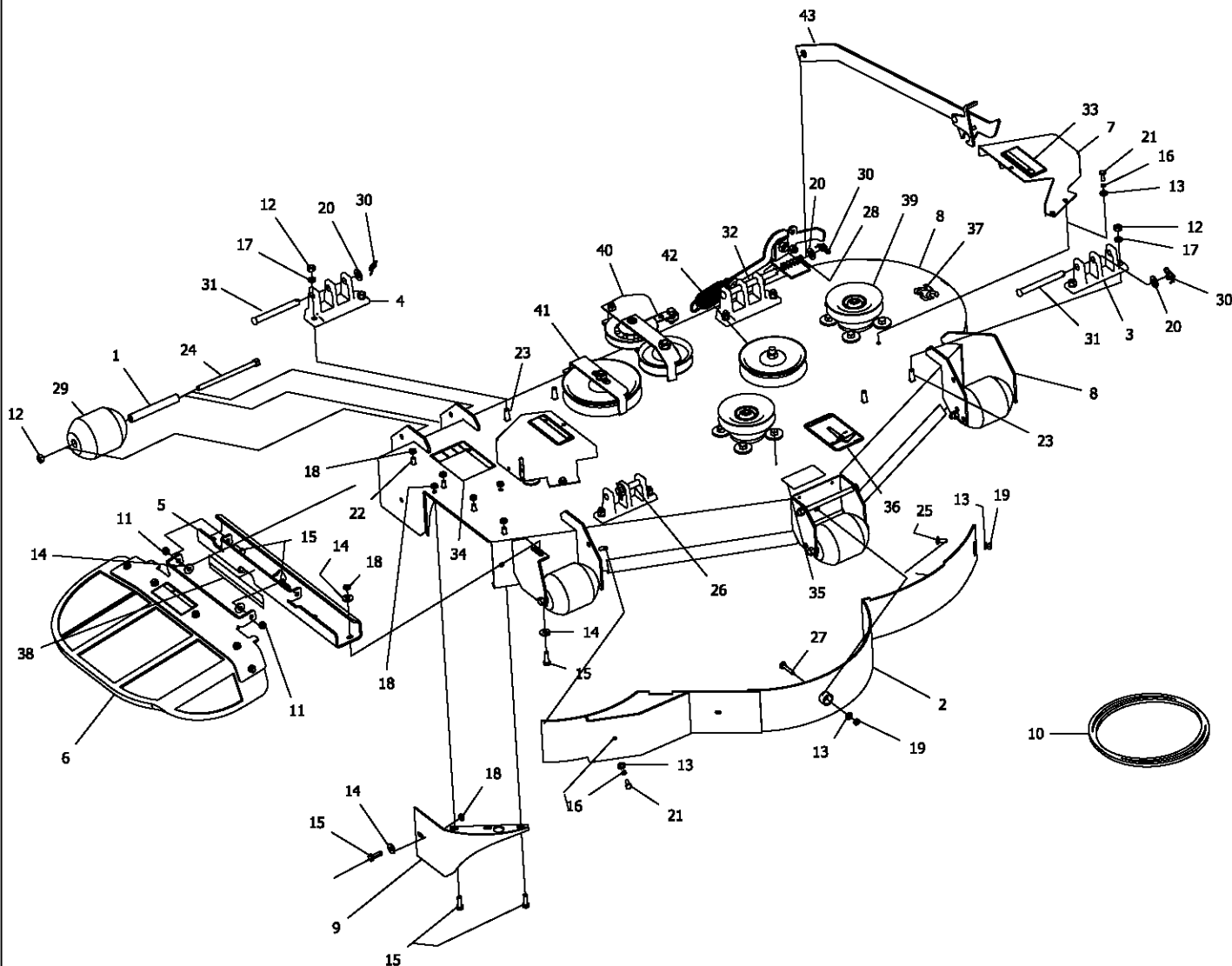
15. FUEL TANK ASSEMBLY
16. JOYSTICK STEERING CONTROL & RELATED PARTS
17. JOYSTICK STEERING CONTROL & RELATED PARTS (CONT)
18. TWIN STICK STEERING CONTROL & RELATED PART
19. PARKING BRAKE ASSEMBLY & RELATED PARTS - JAZEE SR225
20. PARKING BRAKE ASSEMBLY & RELATED PARTS - JAZEE PRO & PRO DLX SR375
21. MOTOR & TRANSMISSION ASS'Y & RELATED PARTS - 22HP KOHLER JAZEE SR225
22. MOTOR & TRANSMISSION ASS'Y & RELATED PARTS - 27HP KOH COURAGE SR225 & SR375
23. MOTOR & TRANSMISSION ASS'Y & RELATED PARTS - 22HP KAWASAKI JAZEE PRO SR375
24. MOTOR & TRANSMISSION ASS'Y & RELATED PARTS - 27HP KOHLER COMMAND PRO DLX SR375
25. E-6405 WIRE HARNESS ASS'Y & RELATED PARTS - KOHLER ENGINES (JOYSTICK)
26. E-6415 WIRE HARNESS ASS'Y & RELATED PARTS - KAWASAKI ENGINES (JOYSTICK)
27. E-6416 WIRE HARNESS ASS'Y & RELATED PARTS - KOHLER & KAWASAKI ENGINES (TWINSTICK)
28. E-6417 WIRE HARNESS ADAPTER & RELATED PARTS - KAWASAKI
29. E-6436 WIRE HARNESS ADAPTER & RELATED PARTS - 22HP & 27HP COURAGE KOHLER (TWINSTICK)

48" DECK ASSEMBLY



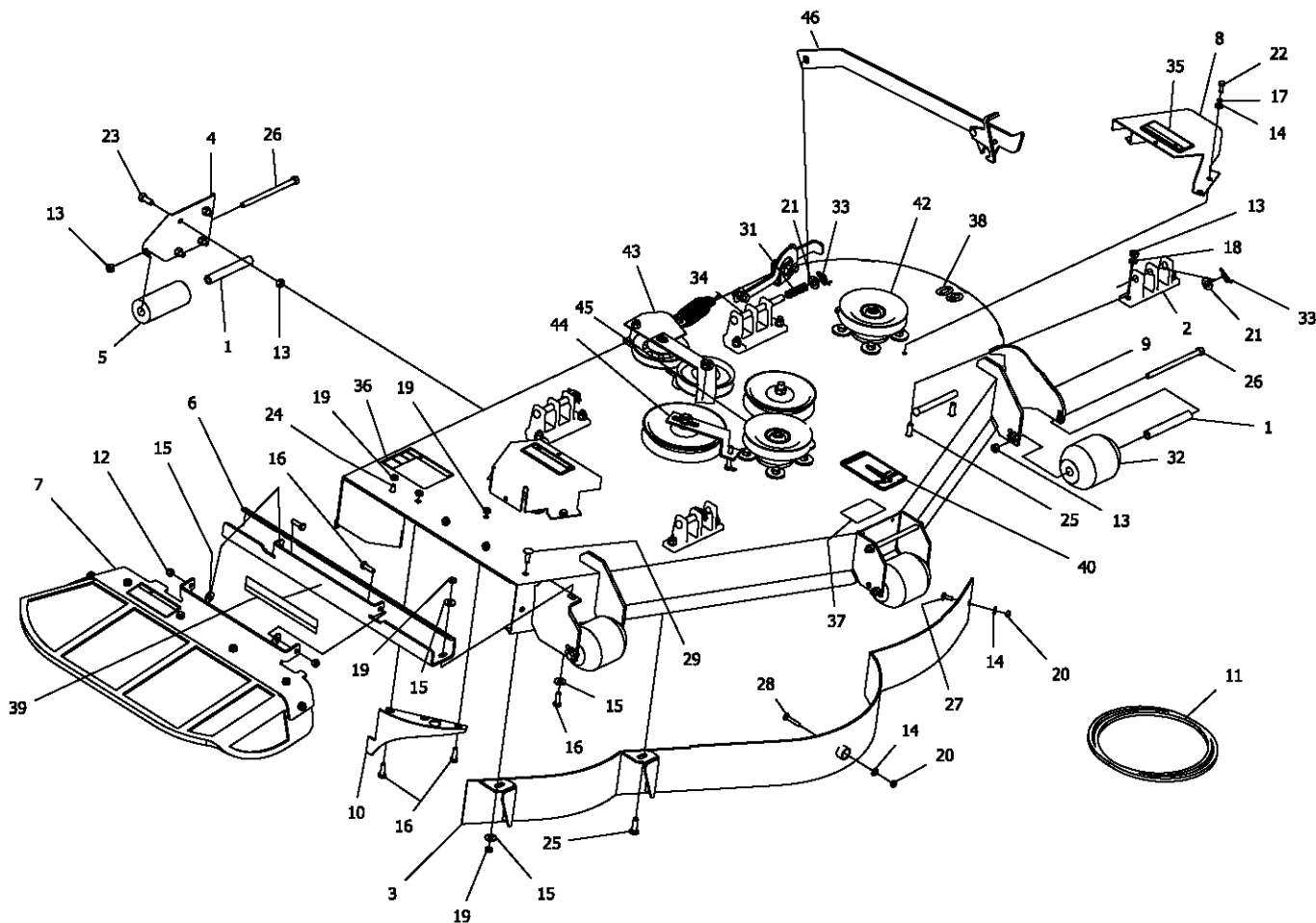
REF NO.	PART NO.	QTY.	DESCRIPTION	REF NO.	PART NO.	QTY.	DESCRIPTION
1	609-183P	5	BUSHING	23	F-1672	8	3/8-16 x 1-1/4" Carriage Bolt
2	629-241W	1	Baffle Wldt. 48"	24	F-1741	6	3/8-16 x 6" Capscrew
3	643-016W	2	Hanger Weldment	25	F-1823	1	Carriage Bolt, 1/4 X 3/4"
4	651-009W	2	CASTING, HANGER, WIDE BASE	26	F-1898	1	1/2 x 2-3/4" Clevis Pin
5	660-120P	1	OUTLET STIFFENER, SMALL	27	F-1935	1	CARRIAGE BOLT, 1/4 X 1-1/2"
6	660-122A	1	RUBBER CHUTE ASS'Y, SM.	28	F-2575	1	SPRING, COMP .656 X .052 X 1.97
7	660-146A	2	PULLEY COVER w/DECALS	29	H-1948	5	Roller, 3-3/4 DIA. x 4-13/16L
8	660-143A	1	48" DECK w/DECALS	30	H-2239	4	1/2" Rue Ring
9	686-080W	1	SPLITTER BAFFLE	31	H-2240	2	1/2" x 4-1/2" Clevis Pin
10	D-3775-W	1	BELT, B-158	32	H-2718	1	1/2" x 5-1/2" Clevis Pin
11	F-1005-02	2	5/16-18 Nylac Nut	33	P-10935	2	Decal, WARNING
12	F-1005-03	22	3/8-16 Stover Nut	34	P-10941	1	DECAL "DANGER ROTATING BLADES"
13	F-1009-01	7	1/4" Flat Washer	35	P-11413	1	DECAL, HOIST POINT
14	F-1009-02	5	5/16" Flat Washer	36	P-11932	1	DECAL, JAZEE DECK BELT ROUTING
15	F-1015-15	6	5/16-18 x 1" Capscrew	37	P-12496	1	DECAL, MISSING CHUTE
16	F-1019-01	5	1/4" LockWasher	38	P-12496	1	DECAL, DECK SIZE 48"
17	F-1019-03	20	3/8" LOCKWASHER	39	-----	3	SPINDEL ASS'Y - SEE PAGE 4
18	F-1125	9	5/16-18 Stover Nut	40	-----	1	DOUBLE IDLER ASS'Y - SEE PAGE 5
19	F-1158	2	1/4-20 Stover Nut	41	-----	1	FRONT IDLER ASS'Y - SEE PAGE 5
20	F-1521	9	1/2" WASHER, CUSTOM	42	-----	1	REAR IDLER ASS'Y - SEE PAGE 5
21	F-1538	5	1/4-20 x 3/4" Capscrew	43	625-114A	1	DECK PROP ASS'Y, PIVOT FRONT (JAZEE PRO SR375)
22	F-1671	4	5/16-18 x 3/4" CARRIAGE BOLT		625-115A	1	DECK PROP ASS'Y, FIXED FRONT (JAZEE SR225)

52" DECK ASSEMBLY



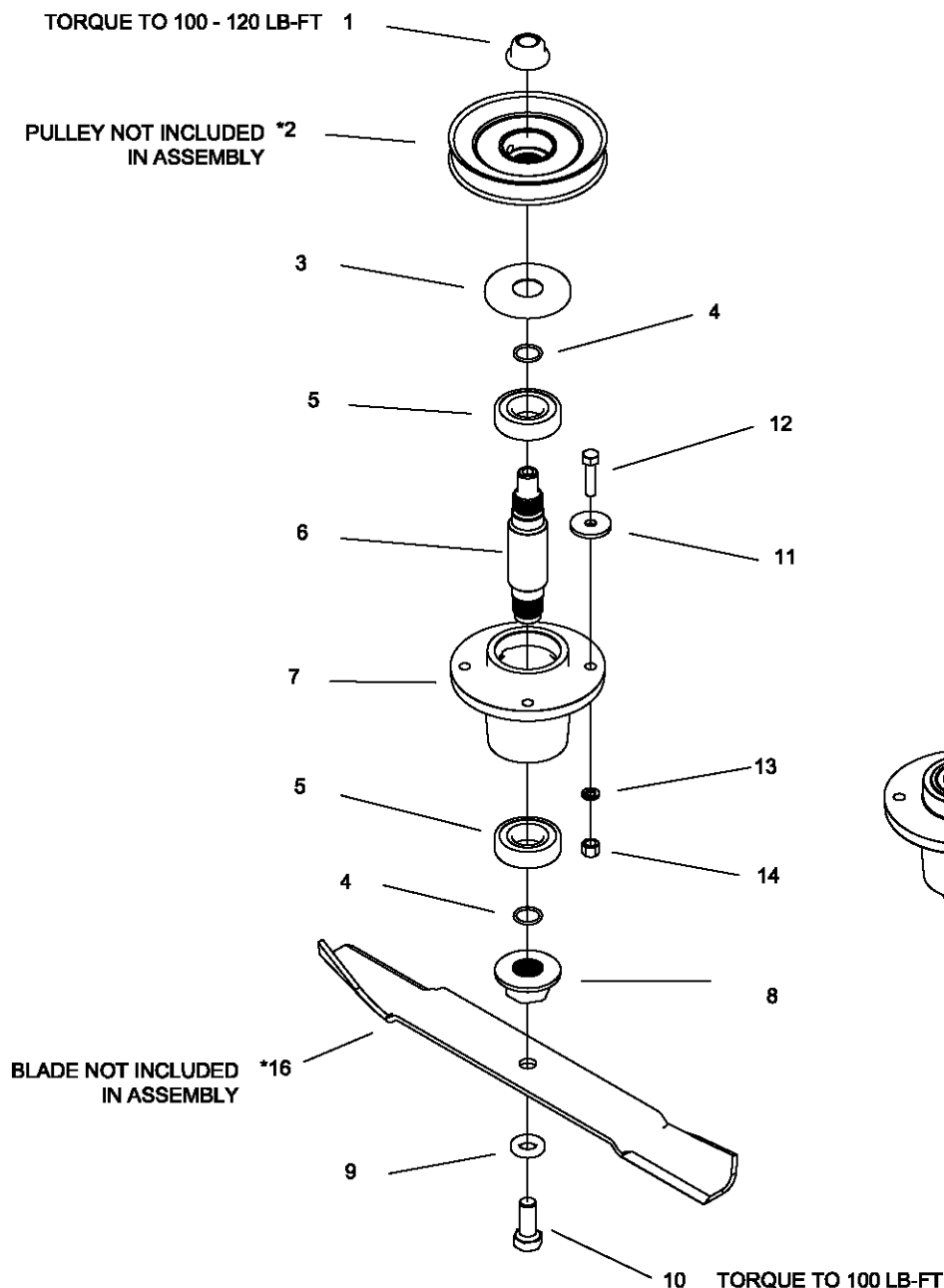
REF NO.	PART NO.	QTY.	DESCRIPTION	REF NO.	PART NO.	QTY.	DESCRIPTION
1	609-183P	5	BUSHING	23	F-1672	8	3/8-16 x 1-1/4" Carriage Bolt
2	629-229W	1	DUST BAFFLE, 52"	24	F-1741	6	3/8-16 x 6" Capscrew
3	643-016W	2	Hanger Weldment	25	F-1823	1	Carriage Bolt, 1/4 X 3/4"
4	651-009W	2	CASTING, HANGER, WIDE BASE	26	F-1889	1	1/2 x 2-5/8" Clevis Pin
5	660-120P	1	OUTLET STIFFENER, SMALL	27	F-1935	1	CARRIAGE BOLT, 1/4 X 1-1/2"
6	660-122A	1	RUBBER CHUTE ASS'Y, SM.	28	F-2575	1	SPRING, COMP .656 X .052 X 1.97
7	660-146A	2	PULLEY COVER w/DECALS	29	H-1948	5	Roller, 3-3/4 DIA. x 4-13/16L
8	660-144A	1	52" DECK W/DECALS	30	H-2239	4	1/2" Rue Ring
9	686-080W	1	SPLITTER BAFFLE	31	H-2240	2	1/2" x 4-1/2" Clevis Pin
10	D-3776-W	1	BELT, B-180	32	H-2718	1	1/2" x 5-1/2" Clevis Pin
11	F-1005-02	2	5/16-18 Nylac Nut	33	P-10935	2	Decal, WARNING
12	F-1005-03	23	3/8-16 Stover Nut	34	P-10941	1	DECAL "DANGER ROTATING BLADES"
13	F-1009-01	7	1/4" Flat Washer	35	P-11413	1	DECAL, HOIST POINT
14	F-1009-02	5	5/16" Flat Washer	36	P-11932	1	DECAL, JAZEE DECK BELT ROUTING
15	F-1015-15	6	5/16-18 x 1" Capscrew	37	P-11951	1	DECAL, DECK SIZE, 52
16	F-1019-01	5	1/4" LockWasher	38	P-12496	1	DECAL, MISSING CHUTE
17	F-1019-03	20	3/8" LOCKWASHER	39	-----	3	SPINDEL ASS'Y - SEE PAGE 4
18	F-1125	8	5/16-18 Stover Nut	40	-----	1	DOUBLE IDLER ASS'Y - SEE PAGE 5
19	F-1158	3	1/4-20 Stover Nut	41	-----	1	FRONT IDLER ASS'Y - SEE PAGE 5
20	F-1521	6	1/2" WASHER, CUSTOM	42	-----	1	REAR IDLER ASS'Y - SEE PAGE 5
21	F-1538	5	1/4-20 x 3/4" Capscrew	43	625-114A	1	DECK PROP ASS'Y, PIVOT FRONT (JAZEE PRO SR375)
22	F-1671	4	5/16-18 x 3/4" CARRIAGE BOLT		625-115A	1	DECK PROP ASS'Y, FIXED FRONT (JAZEE SR225)

60" DECK ASSEMBLY



REF NO.	PART NO.	QTY.	DESCRIPTION	REF NO.	PART NO.	QTY.	DESCRIPTION
1	609-183P	5	BUSHING	24	F-1671	3	5/16-18 x 3/4" CARRIAGE BOLT
2	643-016W	2	Hanger Weldment	25	F-1672	8	3/8-16 x 1-1/4" Carriage Bolt
3	643-104W	1	60" DUST BAFFLE	26	F-1741	6	3/8-16 x 6" Capscrew
4	659-139P	2	SCALPER BRACKET	27	F-1823	1	Carriage Bolt, 1/4 X 3/4"
5	660-076P	2	ROLLER	28	F-1935	1	CARRIAGE BOLT, 1/4 X 1-1/2"
6	660-123P	1	OUTLET STIFFENER, LARGE	29	F-2066	1	5/16-18 x 1" CARRIAGE BOLT
7	660-125A	1	RUBBER CHUTE ASSEMBLY, LARGE	30	F-2106	1	1/2-13 X 3-1/2" CARRIAGE BOLT
8	660-146A	2	PULLEY COVER w/DECALS	31	F-2575	1	SPRING, COMP .656 X .052 X 1.97
9	660-145A	1	60" LITE DECK WELDMENT	32	H-1948	3	Roller, 3-3/4 DIA. x 4-13/16L
10	686-006W	1	SPLITTER BAFFLE	33	H-2239	4	1/2" Rue Ring
11	D-3776-W	1	BELT, B-180	34	H-2718	1	1/2" x 5-1/2" Clevis Pin
12	F-1005-02	2	5/16-18 Nyloc Nut	35	P-10935	2	Decal, WARNING
13	F-1005-03	31	3/8-16 Stover Nut	36	P-10941	1	DECAL "DANGER ROTATING BLADES"
14	F-1009-01	6	1/4" Flat Washer	37	P-11413	1	DECAL, HOIST POINT
15	F-1009-02	5	5/16" Flat Washer	38	P-11952	1	DECAL, DECK SIZE, 60
16	F-1015-15	5	5/16-18 x 1" Capscrew	39	P-12496	1	DECAL, MISSING CHUTE
17	F-1019-01	4	1/4" LockWasher	40	P-12837	1	DECAL, DECK BELT ROUTING
18	F-1019-03	20	3/8" LOCKWASHER	42	-----	3	SPINDEL ASS'Y - SEE PAGE 4
19	F-1125	8	5/16-18 Stover Nut	43	-----	1	DOUBLE IDLER ASS'Y - SEE PAGE 5
20	F-1158	2	1/4-20 Stover Nut	44	-----	1	FRONT IDLER ASS'Y - SEE PAGE 5
21	F-1521	6	1/2" WASHER, CUSTOM	45	-----	1	REAR IDLER ASS'Y - SEE PAGE 5
22	F-1538	4	1/4-20 x 3/4" Capscrew	46	625-114A	1	DECK PROP ASS'Y, PIVOT FRONT (JAZEE PRO SR375)
23	F-1558	8	3/8-16 x 7/8" Capscrew		625-115A	1	DECK PROP ASS'Y, FIXED FRONT (JAZEE SR225)

DECK SPINDLE ASSEMBLY 629FN-001A

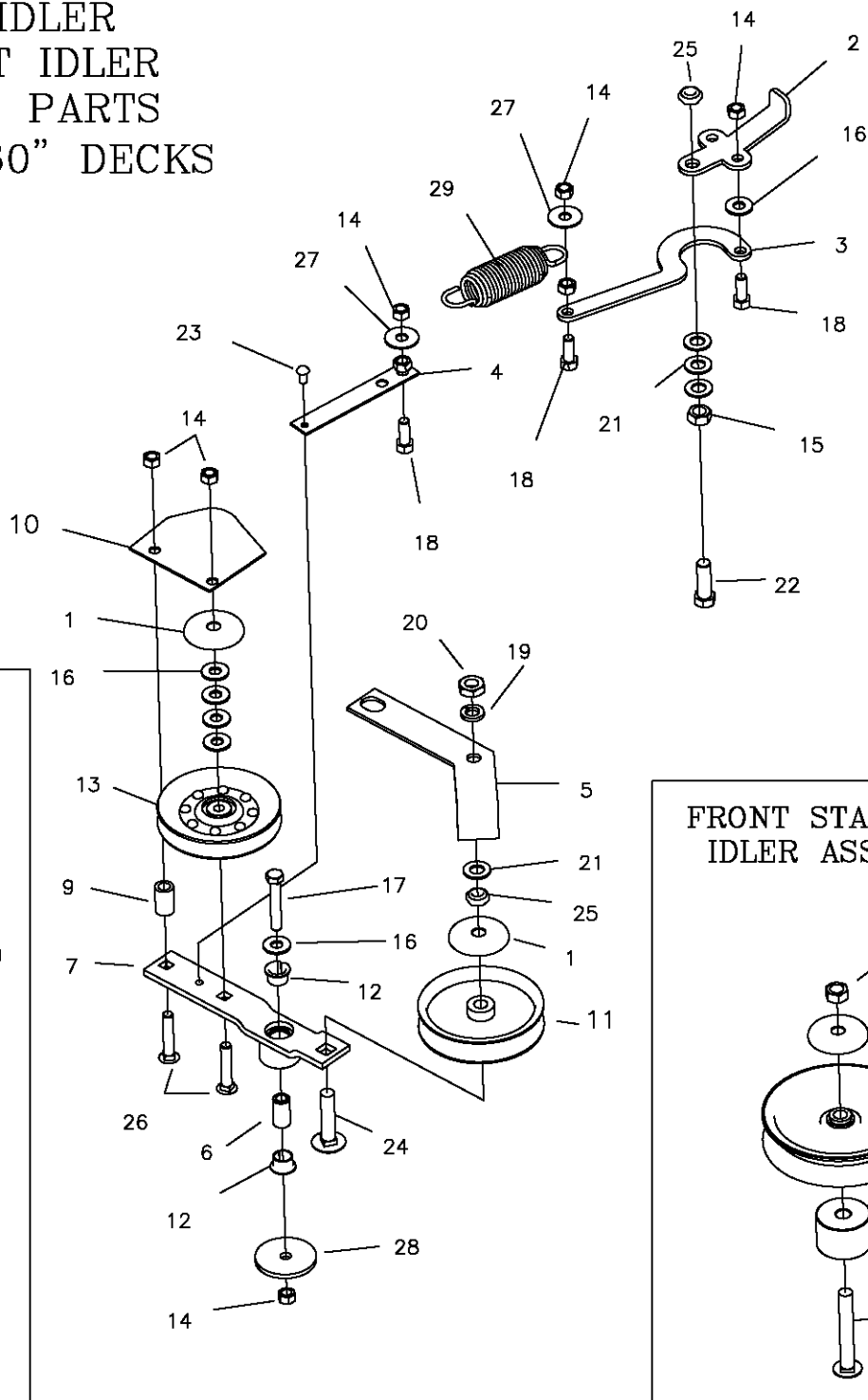


15 (APPLY THIN LAYER OF CHEVRON RYKOTAC GREASE TO THE TOP SURFACES OF THE BEARING AND HOUSING PRIOR TO INSTALLING ITEM #3 (BEARING CAP).

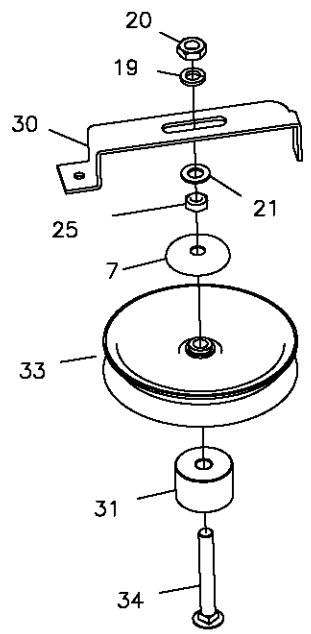
NEW MOWERS ARE SHIPPED WITH 3 to 4 oz OF CHEVRON SRI NLGI 2 GREASE INSIDE EACH SPINDLE HOUSING.

REF NO.	PART NO.	QTY.	DESCRIPTION	REF NO.	PART NO.	QTY.	DESCRIPTION
1	F-2078	1	3/4-6 TOP LOCK NUT	14	F-1573	4	3/8-24 LOCK NUT
2	668-037P	*	48" DECK PULLEY	15	H-2707	1	GREASE PACKET
*	668-038P	*	52" DECK PULLEY	16	H-2653	1	BLADE, HIGH L, 17" CUT 48"
*	668-039P	*	60" DECK PULLEY	-	H-2654	-	BLADE, HIGH L, 18 3/8" CUT 52"
3	609-292P	1	CAP, BEARING	-	H-2655	-	BLADE, HIGH L, 21" CUT 60"
4	H-2639	2	O'RING, RUBBER	OPTIONAL BLADES			
5	D-3867	2	BEARING, #6206	-	H-2659	-	BLADE, LOW L, 17" CUT 48"
6	609-289P	1	SHAFT, SPINDLE	-	H-2660	-	BLADE, LOW L, 18 3/8" CUT, 52"
7	609-285P	1	HOUSING, SPINDLE	-	H-2661	-	BLADE, LOW L, 21" CUT, 60"
8	609-288P	1	BLADE DRIVER	-	H-2665	-	BLADE, GATOR, 17" CUT 48"
9	660-099P	1	BLADE WASHER	-	H-2666	-	BLADE, GATOR, 18 3/8" CUT 52"
10	F-2073	1	5/8-11 X 1.5 HHCS GR. 8	-	H-2667	-	BLADE, GATOR, 21" CUT 60"
11	609-034P	4	SPINDLE SPACER, WASHER				
12	F-1572	4	3/8-24 X 1.5 CAP SCREW				
13	F-1019-03	4	3/8 LOCK WASHER				

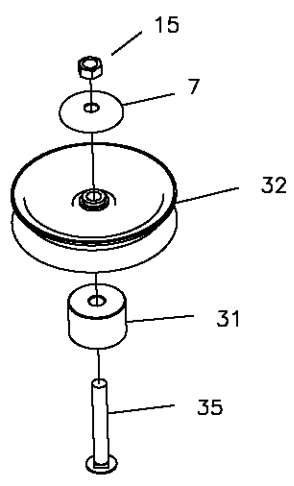
DOUBLE IDLER DRIVE BELT IDLER & RELATED PARTS 48", 52", & 60" DECKS



**RIGHT REAR
STATIONARY
IDLER ASSEMBLY**

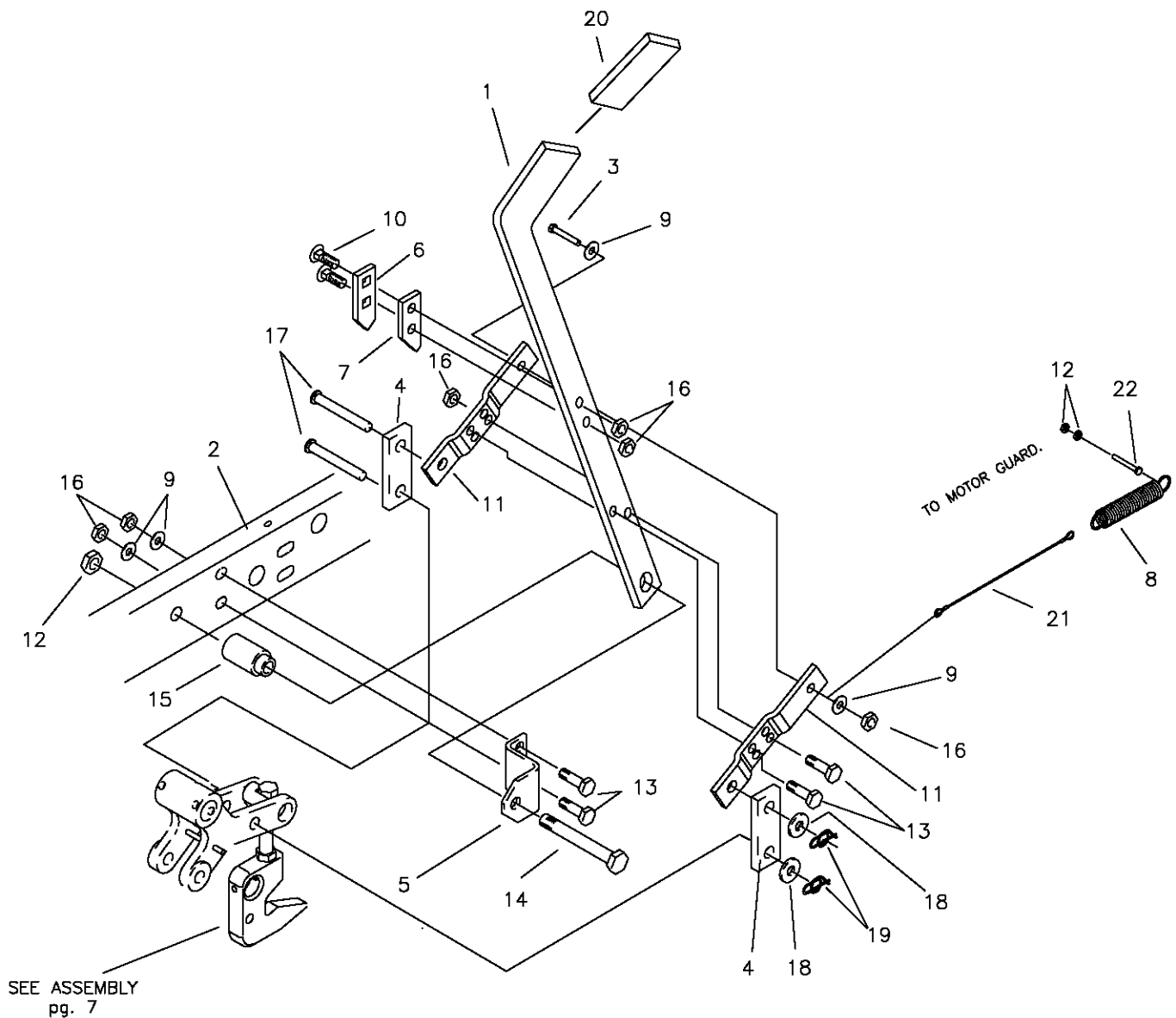


**FRONT STATIONARY
IDLER ASSEMBLY**



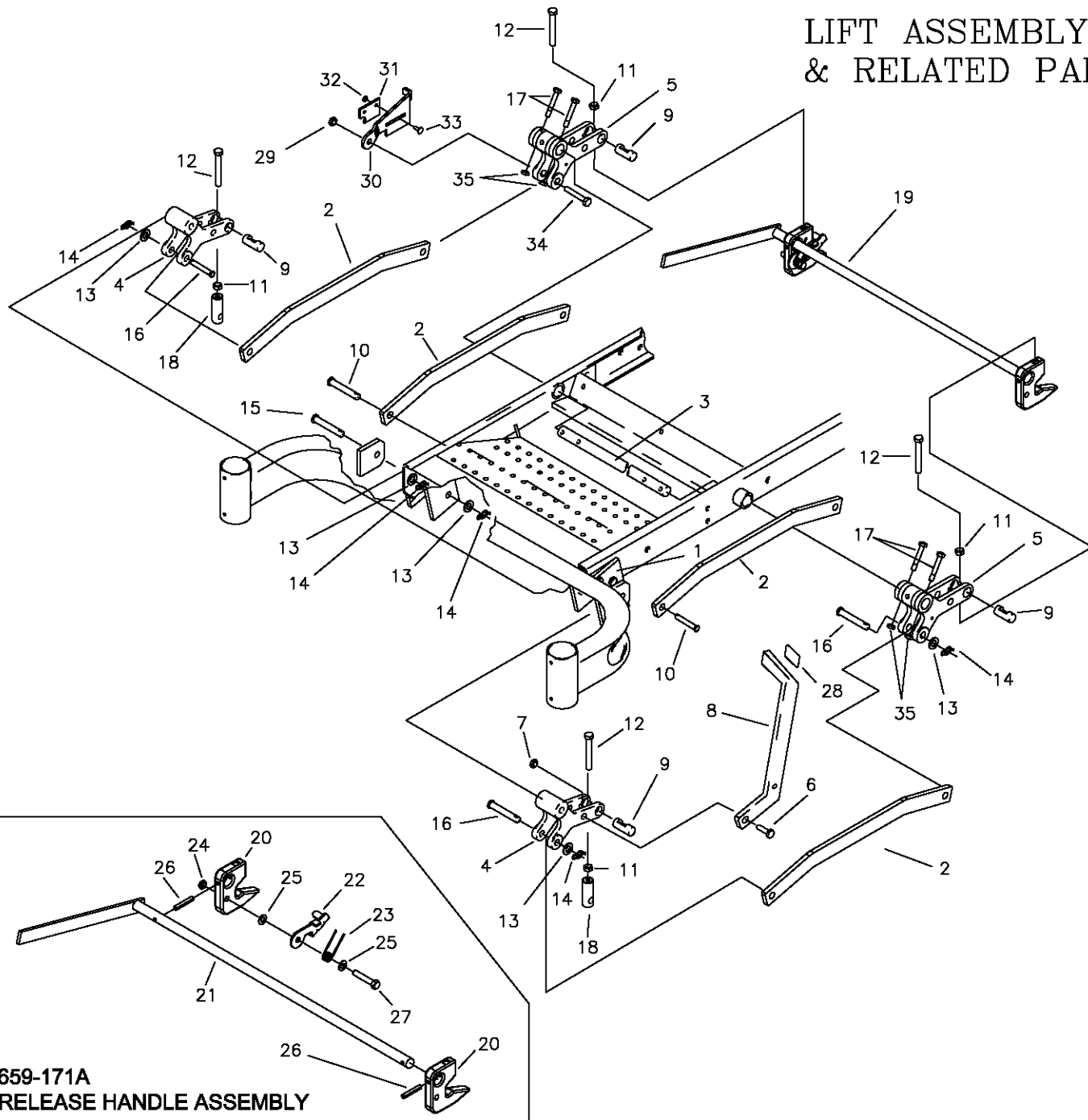
REF NO.	PART NO.	QTY.	DESCRIPTION	REF NO.	PART NO.	QTY.	DESCRIPTION
1	620-201P	4	WASHER, BEARING CAP	19	F-1464	2	1/2" LOCKWASHER
2	660-030P	1	Belt Tightner Handle	20	F-1489	2	1/2-13 Hex Jam Nut
3	660-031P	1	Belt Tightner Arm	21	F-1521	9	1/2" WASHER, CUSTOM
4	660-081P	1	EXTENSION FOR SPRING	22	F-1526	1	1/2-13 x1-1/2" Capscrew
5	660-110P	1	BELT KEEPER, B BELT	23	F-1733	1	1/4" x 1/2" DRIVE SCREW
6	660-135P	1	MOUNTING PIN	24	F-1822	1	1/2-13 X 2-1/4" CARRIAGE BOLT
7	660-138W	1	IDLER ARM WLDT, 1/2" OFFSET	25	F-1966	3	1/2-13 THIN NYLOC NUT
8	660W-003W	1	WLDT, DECK 48"	26	F-1976	2	3/8-16 x 2" Carriage Bolt
9	668-021P	1	SPACER, BELT GUARD	27	F-2083	2	WASHER, 3/8 FENDER
10	668-029P	1	BELT GUARD	28	F-2102	1	WASHER, 406ID X 2.25OD X 7GA THK
11	D-3338	1	Pulley flat idler 1/2" Bore 4"	29	H-2619	1	SPRING, 5 X 1-1/2, TAPERED ENDS
12	D-3730	2	Flanged Bushing 5/8" Bore	30	660-112P	1	BELT KEEPER
13	D-3758	1	PULLEY V-IDLER 4.48 O.D. 3/8 HOLE	31	700-008P	2	SPACER 2.0000D X .531ID X 1.375HT
14	F-1005-03	22	3/8-16 Stover Nut	32	D-3774	1	IDLER PULLEY 5"
15	F-1005-05	2	1/2-13 Stover Nut	33	D-3815	1	IDLER PULLEY 6"
16	F-1009-03	6	3/8" Flat Washer	34	F-2079	1	CARRIAGE BOLT 1/2-13 X 3-3/4"
17	F-1268	1	3/8-16 x2-1/4" Capscrew	35	F-2106	1	1/2-13 X 3-1/2" CARRIAGE BOLT
18	F-1394	3	3/8-16 x 1" Capscrew				

LIFT HANDLE ASSEMBLY & RELATED PARTS



ITEM #	PART #	QTY	DESCRIPTION	ITEM #	PART #	QTY	DESCRIPTION
1	659-060P	1	LIFT HANDLE	15	642-095P	1	HANDLE PIVOT PIN
2	659-022W	1	FRAME WELDMENT, LH.	16	F-1005-03	6	NUT, 3/8-16 LOCKNUT (STOVER)
3	F-1073	1	3/8-18 X 2" GR 5	17	F-1889	2	CLEVIS PIN, 1/2 X 2 5/8"
4	642-061P	2	HANDLE LINK	18	F-1521	2	1/2" FLAT WASHER
5	642-041P	1	HANDLE PIVOT BRACKET	19	H-2239	2	RUE RING, 1/2"
6	642-127P	1	TOP PEG LATCH PLATE	20	H-2324	1	VINYL GRIP, 3/8 X 1 1/2"
7	642-126P	1	TOP PEG SPACER PLATE	21	H-2460	1	CABLE
8	H-1610	1	SPRING, 1 1/2" OD. X 8"	22	F-1293	2	1/2-13 X 1 1/2" GR. 5
9	F-1009-03	3	FLAT WASHER, 3/8"				
10	F-1672	2	CARRIAGE BOLT, 3/8-16 X 1 1/4"				
11	642-060P	2	SPRING ANCHOR PLATE				
12	F-1005-05	3	NUT, 1/2-13 LOCKNUT				
13	F-1307	2	3/8-16 X 1 1/4" GR. 5				
14	F-1439	1	1/2-13 X 3" GR. 5				

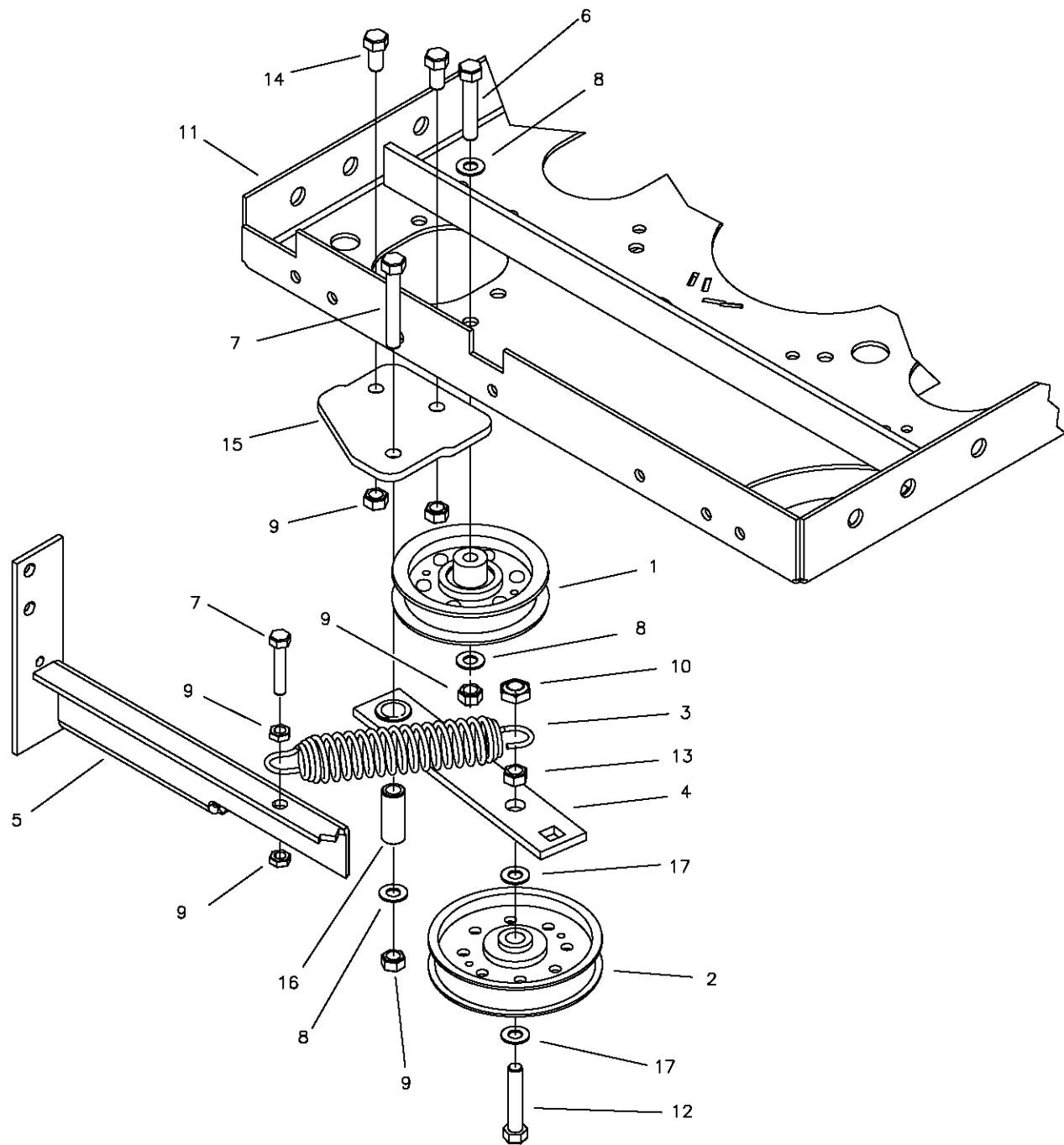
LIFT ASSEMBLY & RELATED PARTS



**659-171A
RELEASE HANDLE ASSEMBLY**

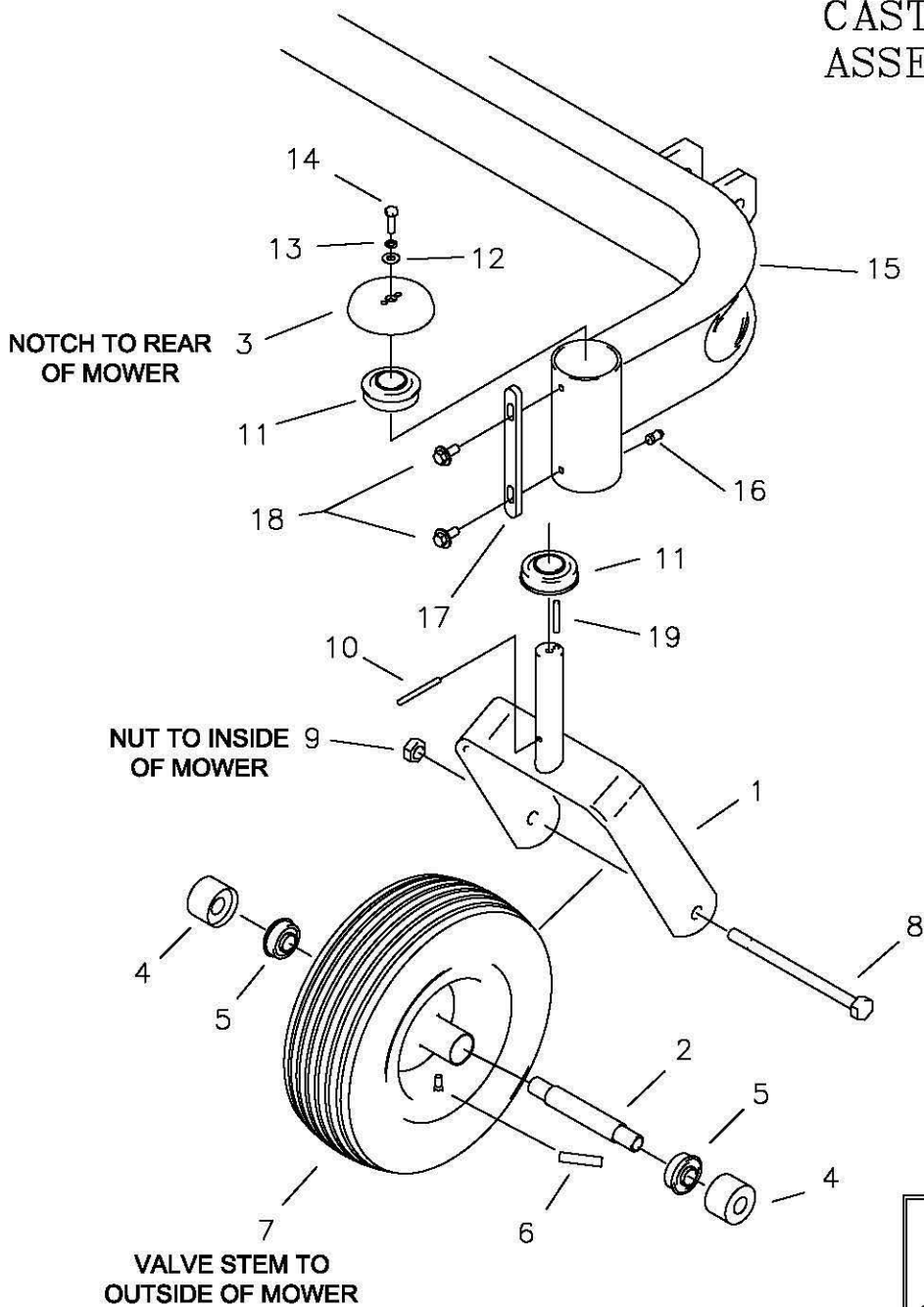
ITEM #	PART #	QTY	DESCRIPTION	ITEM #	PART #	QTY	DESCRIPTION
1	642-063P	2	DRAG BAR TAB	19	659-171A	1	RELEASE HANDLE ASSEMBLY
2	659-399P	4	DRAG LINK BAR	20	659-140P	2	DECK HOOK
3	620-051P	1	LIFT BAR	21	659-148W	1	RELEASE HANDLE WELDMENT
4	642-081P	2	LIFT SLEEVE, FRONT	22	659-145P	1	HOOK KEEPER
5	642-082P	2	LIFT SLEEVE, REAR	23	H-2547	1	SPRING, TORSION
6	F-1879	1	5/16-18 X 1 1/4" GR.5	24	F-1005-03	1	NUT, 3/8-16, STOVER
7	F-1125	1	5/16-18 STOVER NUT	25	F-1009-03	2	WASHER, FLAT, 3/8"
8	659-056P	1	DECK LIFT PEDAL	26	F-2009	2	SPIROL ROLL PIN 1/4 X 1-1/2
9	642-177P	4	HANGER PIN	27	F-1073	1	CAPSCREW, 3/8-16 X 2, GR. 5
10	F-1815	2	CLEVIS PIN, 1/2 X 1 1/4"	28	H-2401	1	TREAD PAD
11	F-1489	4	NUT, 1/2" JAM	29	F-1005-05	1	1/2" STOVER NUT
12	F-1936	4	1/2-13 X 3 1/2, 2" THREAD	30	659-146P	1	LATCH PLATE
13	F-1521	8	WASHER, 1/2 NARROW	31	659-170P	1	PLATE, CATCH
14	H-2239	8	RUE RING, 1/2"	32	F-1158	2	NUT, 1/4" STOVER
15	H-2240	2	CLEVIS PIN, 1/2 X 4 1/2"	33	F-1823	2	CARRIAGE BOLT, 1/4-20 X 3/4"
16	F-1898	3	CLEVIS PIN, 1/2 X 2 3/4"	34	F-1828	1	1/2-13 X 3-1/2" CAPSCREW
17	F-2039	4	5/16-24 x 2" HHCS	35	F-2041	4	5/16-24 JAM NUT
18	642-175P	2	ADJUSTABLE HANGER END				

TRANSMISSION IDLERS & RELATED PARTS



ITEM #	PART #	QTY	DESCRIPTION	ITEM #	PART #	QTY	DESCRIPTION
1	D-3768	1	PULLEY, 3-1/2" X 1"	15	659-239P	1	BOLT ON IDLER MOUNT TAB
2	D-3617	1	PULLEY, FLAT IDLER, 1/2" BORE, 4"	16	659-085P	1	MOUNTING PIN
3	H-2619	1	SPRING, 5x1-1/2, TAPERED ENDS	17	F-1521	2	1/2" FLAT WASHER
4	661-090A	1	IDLER ARM ASSEMBLY				
5	659-296W	1	BRACE WELDMENT				
6	F-1073	1	3/8-16 x 2" CAPSCREW				
7	F-1015-30	2	3/8-16 X 2-1/2" GR. 5				
8	F-1009-03	2	3/8" FLAT WASHER				
9	F-1005-03	6	3/8-16 STOVER LOCK NUT				
10	F-1966	1	1/2" THIN NYLOC NUT				
11	659-174W	1	MOTOR MOUNT WELDMENT				
12	F-1664	1	1/2-13 x 2-1/4" CAPSCREW				
13	F-1005-05	1	1/2-13 STOVER NUT				
14	F-1015-23	2	3/8-16 x 3/4" CAPSCREW				

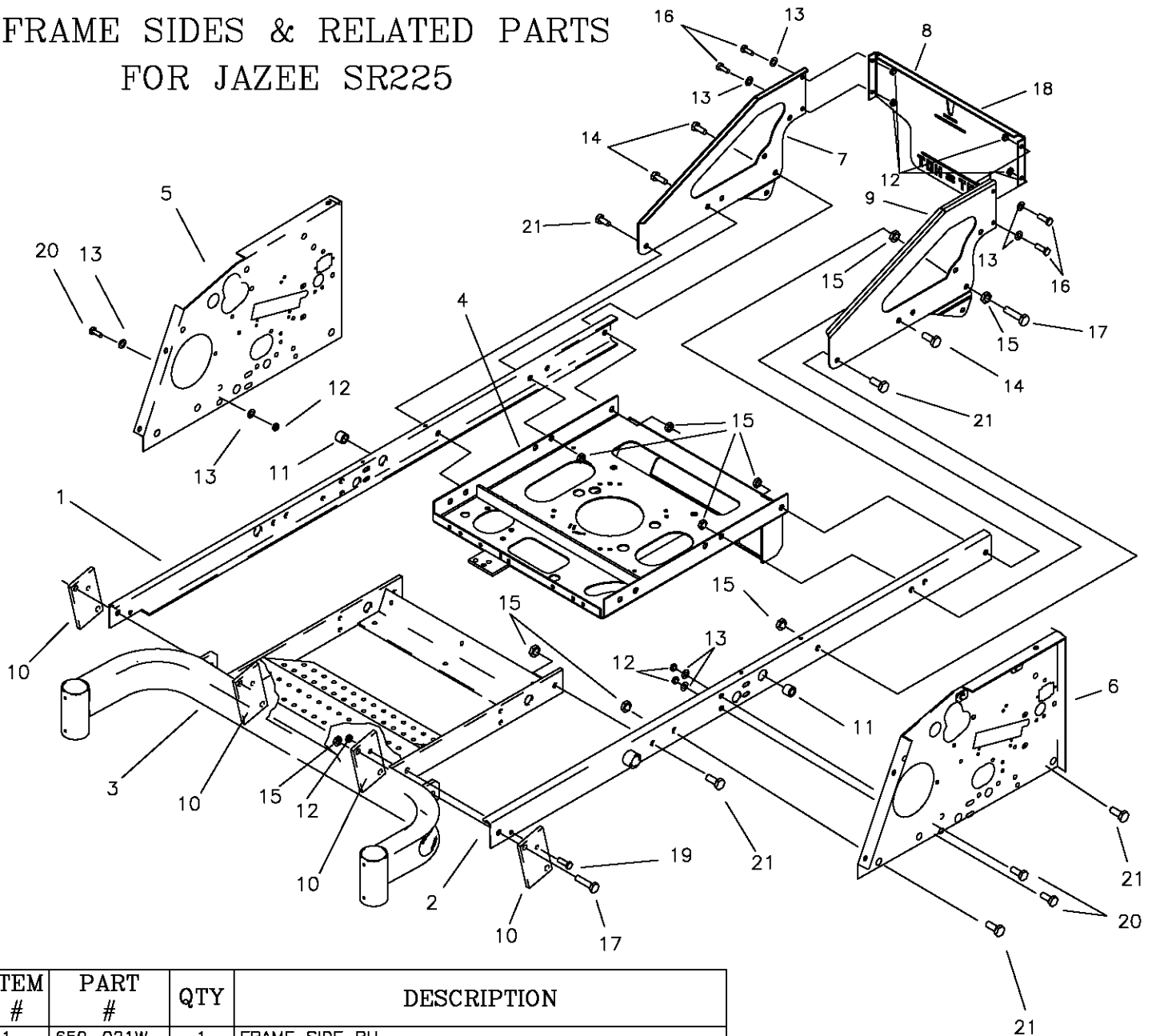
CASTER WHEEL ASSEMBLY



**JAZEE PRO-SR375
USE ASSEMBLIES
659-181A LEFT SIDE
659-182A RIGHT SIDE**

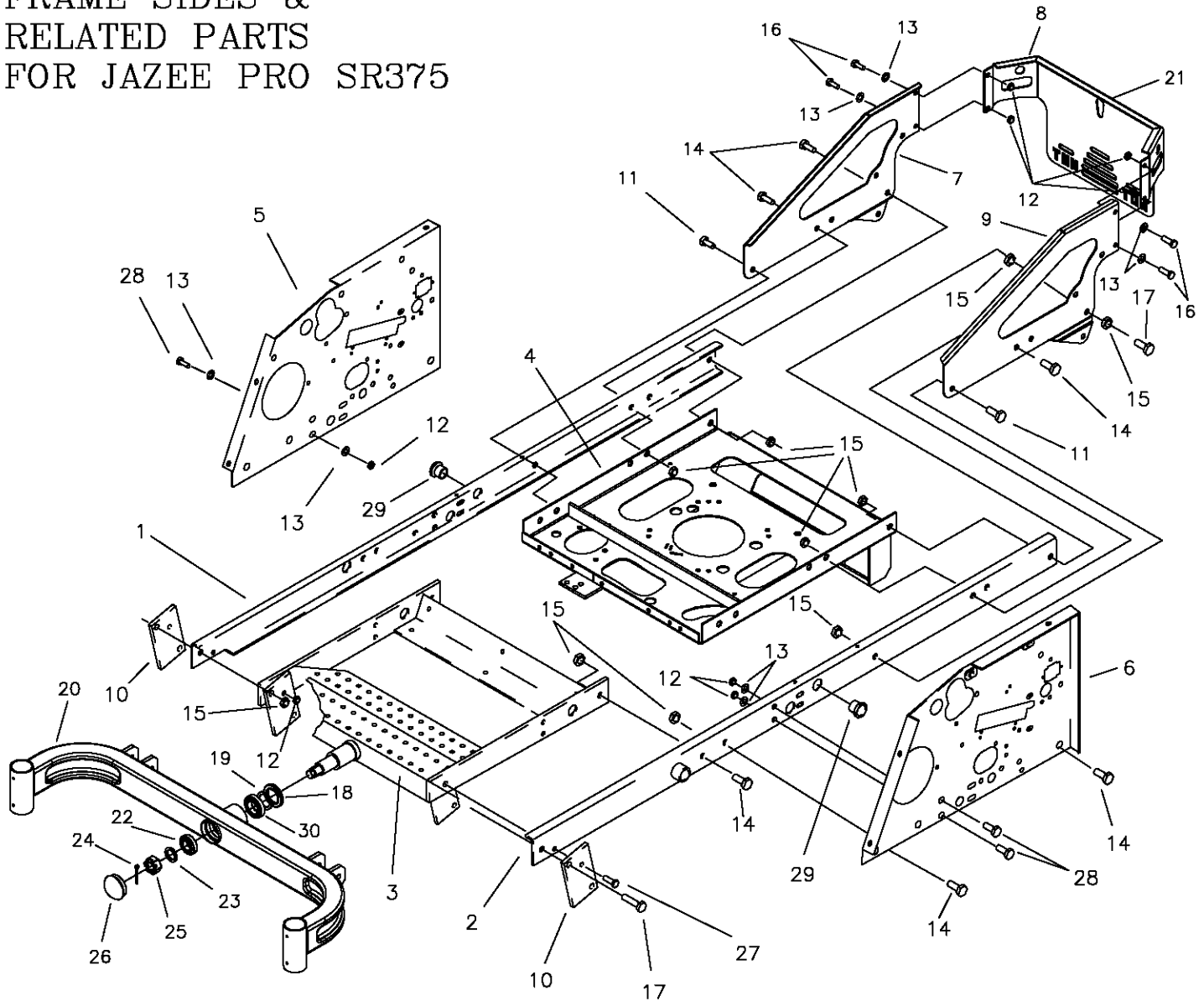
ITEM #	PART #	QTY	DESCRIPTION	ITEM #	PART #	QTY	DESCRIPTION
1	659-184W	2	CASTER WELDMENT (JAZEE-SR225)	9	F-1005-05	2	1/2-13 LOCK NUT
-	617-375W	2	CASTER WELDMENT (JAZEE PRO-SR375)	10	F-1456	2	3/16" X 2" ROLL PIN
-	647-038W	2	CASTER WELDMENT (PRO DLX-SR375)	11	D-2008-02	4	BEARING, SPD SF-16-32
2	622-121P	2	BEARING SPACER (JAZEE-SR225)	12	F-1009-02	2	5/16" FLAT WASHER
-	611-136P	2	BEARING SPACER (JAZEE PRO-SR375)	13	F-1019-02	2	5/16" LOCK WASHER
-	647-038P	2	BEARING SPACER (PRO DLX-SR375)	14	F-1863	2	5/16"-18 X 1" W/NYLOC PATCH
3	636-176P	2	BEARING CAP, RED	15	659-298W	1	FRONT AXLE (JAZEE-SR225)
4	659-004P	4	BEARING SHIELD (JAZEE-SR225)	-	659-287W	1	FRONT AXLE (JAZEE PRO & PRO DLX-SR375)
-	611-135P	4	BEARING SHIELD (JAZEE PRO & DLX-SR375)	16	H-1056	2	GREASE ZERK
5	D-3432	4	BEARING, 5/8 ID X 1-3/8 OD	17	659-185P	2	STOP TAB
6	P-11384	2	DECAL, 12 PSI	18	F-2030	4	1/4" X 5/8" SELF TAPPING SCREW
7	D-3605	2	10" TIRE W/RIM (JAZEE-SR225)	19	F-1855	2	3/16" X 1" ROLL PIN
-	D-3574	2	13" TIRE W/RIM (JAZEE PRO-SR375)				
-	D-3670	2	13-650 TIRE W/RIM (PRO DLX-SR375)				
8	F-1129	2	1/2-13 X 8" GR. 5 BOLT (JAZEE-SR225)				
-	F-1942	2	1/2-13 X 6-1/2" GR. 5 BOLT (JAZEE PRO-SR375)				
-	F-1908	2	1/2-13 X 9" GR. 5 BOLT (PRO DLX-SR375)				

FRAME SIDES & RELATED PARTS FOR JAZEE SR225



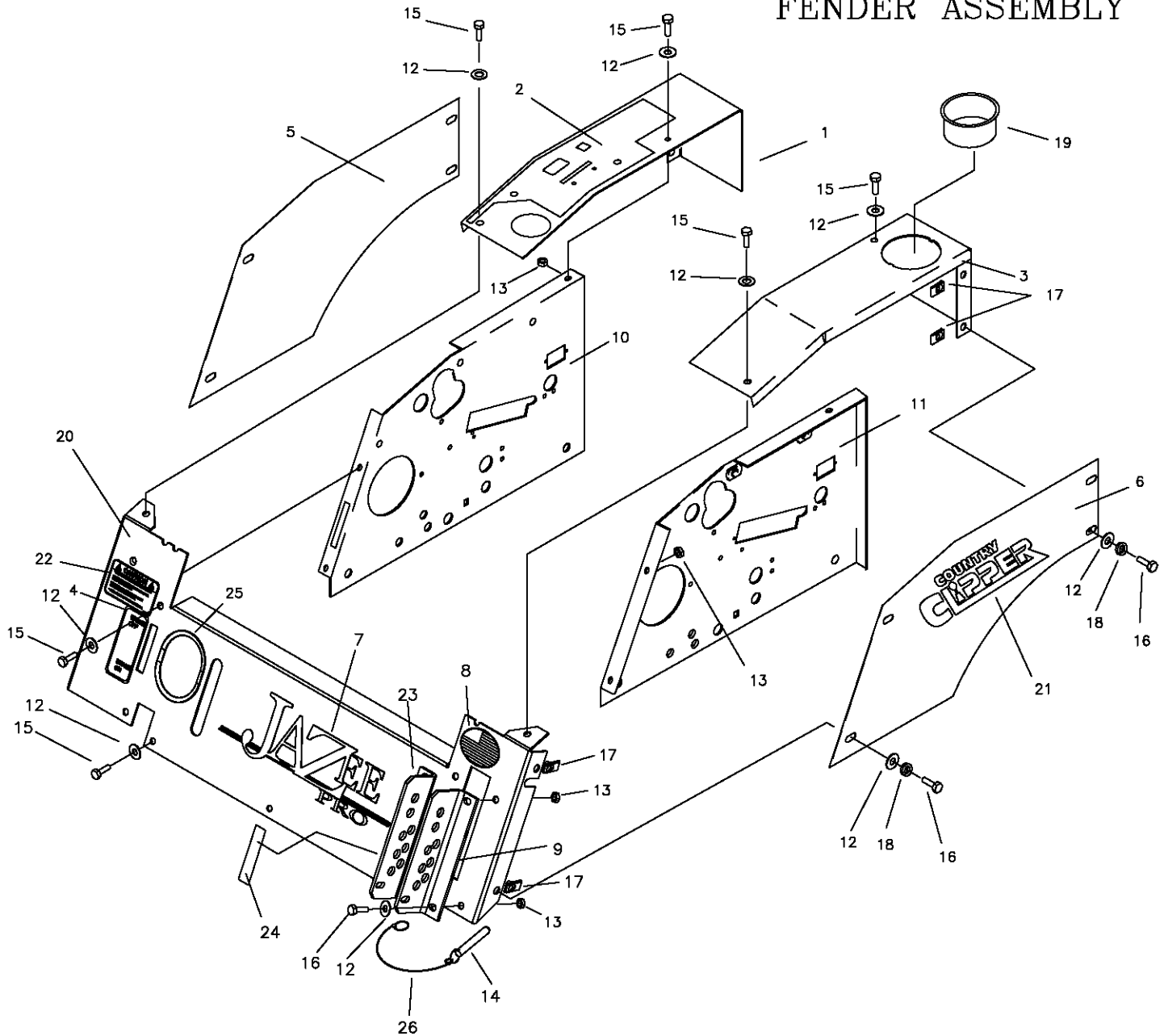
ITEM #	PART #	QTY	DESCRIPTION
1	659-021W	1	FRAME SIDE RH.
2	659-022W	1	FRAME SIDE LH.
3	659-298W	1	AXLE MOUNTING WELDMENT
4	700-024W	1	MOTOR MOUNT WELDMENT
5	659-209W	1	SIDE PANEL RH. (JOYSTICK)
-	659-253W	1	SIDE PANEL LH. (TWINSTICK)
6	659-202P	1	SIDE PANEL RH. (JOYSTICK)
-	659-255P	1	SIDE PANEL LH. (TWINSTICK)
7	659-133P	1	ENGINE GUARD RH SIDE PANEL
8	659-164A	1	REAR PANEL-W/DECAL (22HP JAZEE)
-	629-753A	1	REAR PANEL-W/DECAL (27HP JAZEE)
9	659-134P	1	ENGINE GUARD LH SIDE PANEL
10	642-063P	4	DRAG BAR TAB
11	D-3730	2	BUSHING, 5/8 BORE (JOYSTICK ONLY)
12	F-1005-03	10	3/8-16 STOVER NUT
13	F-1009-03	10	3/8 FLAT WASHER
14	F-1759	3	1/2-13 X 1" GR.5
15	F-1005-05	17	1/2-13 LOCK NUT
16	F-1558	4	3/8-16 X 7/8" GR.5
17	F-1293	3	1/2-13 X 2", GR.5
18	P-12097	1	COLORED DECAL, "COUNTRY CLIPPER"
19	F-1073	2	3/8-16 x 2" CAPSCREW
20	F-1394	4	3/8-16 x 1" CAPSCREW
21	F-1386	6	1/2-13 x 1-1/4" CAPSCREW

FRAME SIDES & RELATED PARTS FOR JAZEE PRO SR375



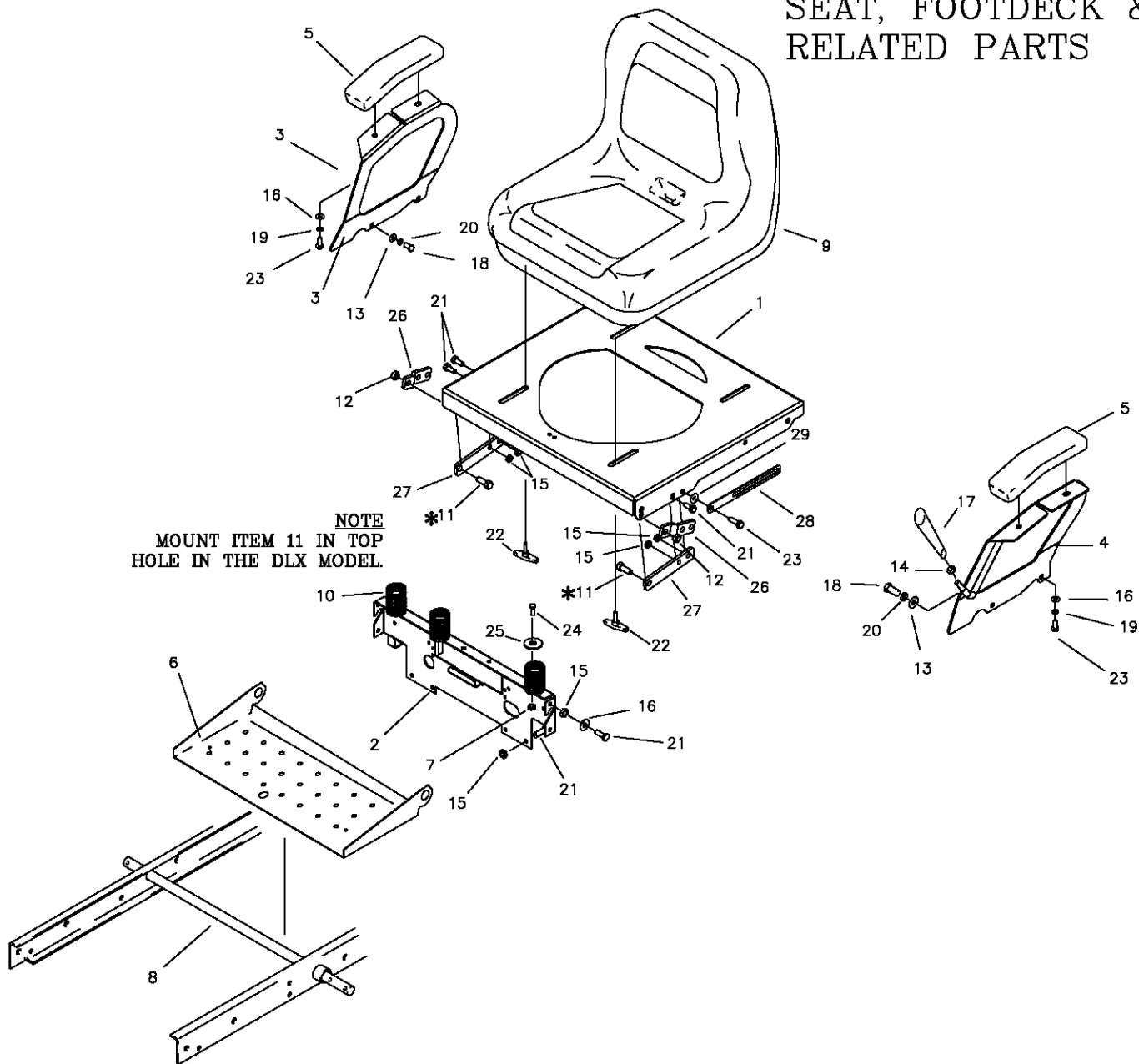
ITEM #	PART #	QTY	DESCRIPTION	ITEM #	PART #	QTY	DESCRIPTION
1	659-021W	1	FRAME SIDE RH.	18	H-2600	1	SEAL, SHAFT, 1.50, 2.38, 0.313
2	659-022W	1	FRAME SIDE LH.	19	663-074P	1	RING, BACKUP, STEEL
3	663-094W	1	AXLE MOUNTING WLDT.	20	659-287W	1	FRONT AXLE WLDT.
4	659-174W	1	MOTOR MOUNT WLDT.	21	P-12097	1	COLORLED DECAL, "COUNTRY CLIPPER"
5	659-209W	1	SIDE PANEL RH. (JOYSTICK)	22	D-3826	1	BRG, TAPARED, SET
-	659-253W	1	SIDE PANEL RH. (TWINSTICK)	23	606-303P	1	1" WASHER
6	659-202P	1	SIDE PANEL LH. (JOYSTICK)	24	F-1728	1	3/16 X 2" COTTER PIN
-	659-255P	1	SIDE PANEL LH. (TWINSTICK)	25	F-1724	1	1-14 SLOTTED NUT
7	659-133P	1	ENGINE GUARD RH SIDE PANEL	26	H-1924	1	GREASE CAP
8	629-753A	1	REAR PANEL-W/DECAL	27	F-1073	2	3/8-16 x 2" CAPSCREW
9	659-134P	1	ENGINE GUARD LH SIDE PANEL	28	F-1394	4	3/8-16 x 1" CAPSCREW
10	642-063P	2	DRAG BAR TAB	29	D-3730	2	BUSHING 5/8 BORE (JOYSTICK ONLY)
11	F-1386	2	1/2-13 x 1-1/4" CAPSCREW	30	D-3825	1	BRG, TAPPERED, SET
12	F-1005-03	10	3/8-16 STOVER NUT				
13	F-1009-03	10	3/8 FLAT WASHER				
14	F-1759	12	1/2-13 X 1" GR.5				
15	F-1005-05	12	1/2-13 LOCK NUT				
16	F-1558	4	3/8-16 X 7/8" GR.5				
17	F-1293	3	1/2-13 X 2", GR.5				

FENDER ASSEMBLY



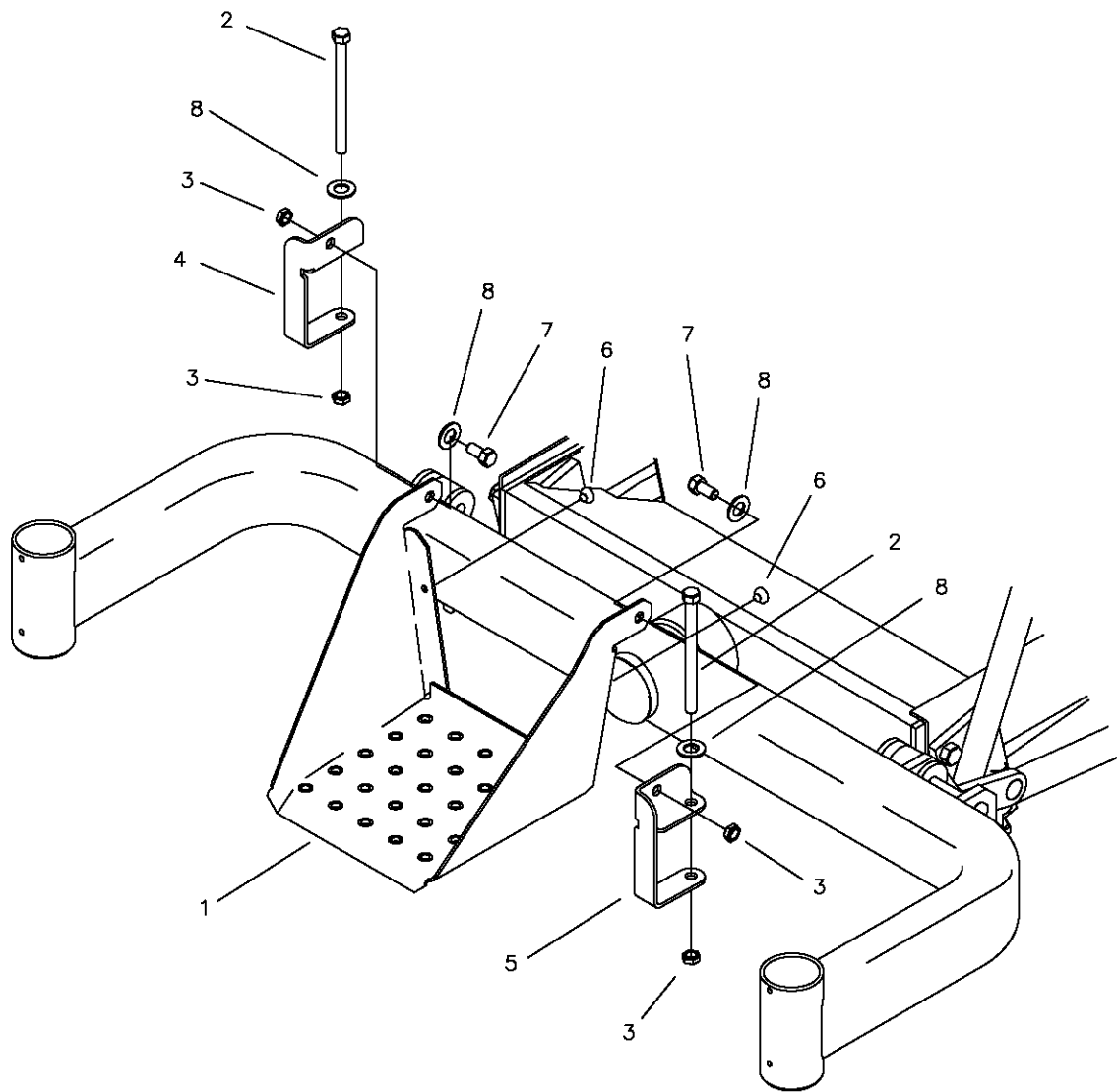
ITEM #	PART #	QTY	DESCRIPTION	ITEM #	PART #	QTY	DESCRIPTION
1	659-312A	1	FENDER, RH (JOYSTICK)-W/DECAL	12	F-1009-02	22	5/16 FLAT WASHER
-	659-313A	1	FENDER, RH (TWINSTICK)-W/DECAL	13	F-1125	16	5/16-18 LOCK NUT
-	700-065A	1	FENDER, RH (JOYSTICK)-W/DECAL (22HP JAZEE)	14	F-2028	1	1/2" X 3" CLEVIS PIN
2	P-11626	1	DECAL, "CONTROL PANEL"	15	F-1546	4	5/16-18 X 3/4" GR. 5
-	P-12713	1	DECAL, "CONTROL PANEL" (22HP JAZEE)	16	F-1015-15	18	5/16-18 X 1" GR.5
3	659-263P	1	FENDER CAP LH. (JOYSTICK)	17	F-1860	8	5/16 U-NUT
-	659-257P	1	FENDER CAP LH. (TWINSTICK)	18	F-1019-02	8	5/16 LOCK WASHER
4	P-11382	1	DECAL, PARK BRAKE	19	H-2228	1	CUP HOLDER
5	659-188A	1	FENDER SKIRT RH-W/DECAL	20	659-310A	1	JAZEE PANEL-W/DECAL
6	659-189A	1	FENDER SKIRT LH-W/DECAL	-	659-311A	1	JAZEE PRO PANEL-W/DECAL
7	P-11624	1	DECAL, JAZEE	-	659-325A	1	PRO DLX PANEL-W/DECAL
-	P-12063	1	DECAL, JAZEE PRO	21	P-12097	2	DECAL, "COUNTRY CLIPPER"
-	P-12828	1	DECAL, PRO DLX	22	P-12557	1	DECAL, "CAUTION"
8	P-12253	1	MADE IN THE USA DECAL	23	642-128P	1	LATCH PLATE
9	642-129P	1	LATCH PLATE LH.	24	P-12257	1	DECAL, "CUT HEIGHT" (JAZEE-SR225)
10	659-209W	1	SIDE PANEL RH. (JOYSTICK)	-	P-12039	1	DECAL "CUT HEIGHT" (JAZEE PRO & DLX-SR375)
-	659-253W	1	SIDE PANEL RH. (TWINSTICK)	25	H-1626	1	"U"-CHANNEL TRIM
11	659-202P	1	SIDE PANEL LH. (JOYSTICK)	26	F-2069	1	PLASTIC LANYARD
-	659-255P	1	SIDE PANEL LH. (TWINSTICK)				

SEAT, FOOTDECK & RELATED PARTS



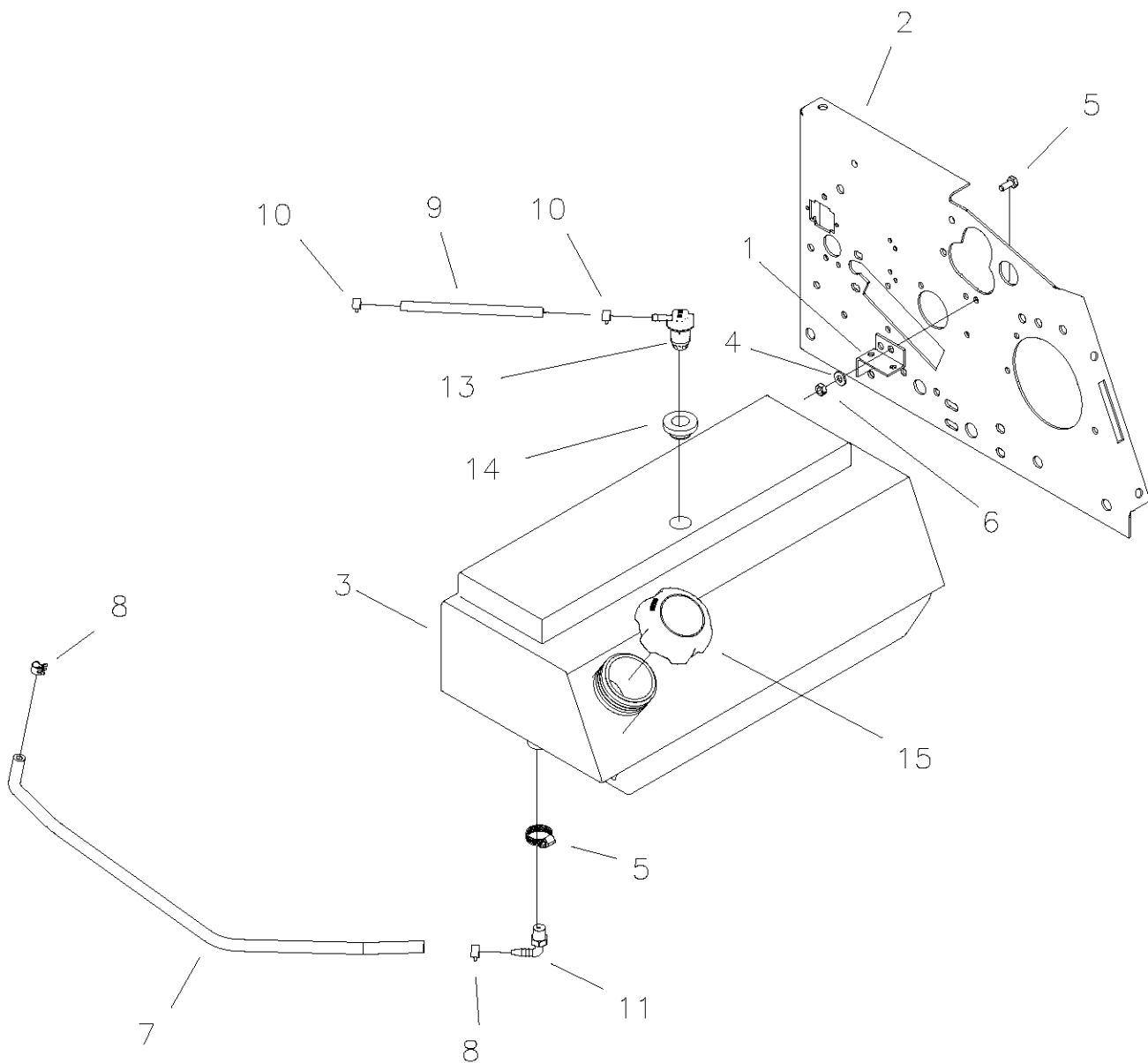
ITEM #	PART #	QTY	DESCRIPTION	ITEM #	PART #	QTY	DESCRIPTION
1	659-005P	1	SEAT MOUNTING BASE (22HP JAZEE ONLY)	12	F-1005-03	2	3/8-16 LOCK NUT
-	659-265P	1	SEAT MOUNTING BASE	13	F-1009-03	4	3/8 FLAT WASHER
2	659-136P	1	REAR SEAT BRACE	14	F-1486	1	3/8-16 JAM NUT
3	659-051P	1	ARM REST RH. (22HP JAZEE-SR225)	15	F-1125	13	5/16-18 LOCK NUT
-	659-266P	1	ARM REST RH. (JAZEE PRO & DLX-SR375)	16	F-1009-02	8	5/16 FLAT WASHER
4	659-055W	1	ARM REST LH. (22HP JAZEE-SR225 JS)	17	H-2317	1	TAPERED HANDLE
-	659-052P	1	ARM REST LH. (22HP JAZEE-SR225 TS)	18	F-1015-23	4	3/8-16 X 3/4" GR. 5
-	659-267P	1	ARM REST LH. (JAZEE PRO & DLX-SR375 TS)	19	F-1019-02	4	5/16 LOCK WASHER
-	659-268W	1	ARM REST LH. (JAZEE PRO & DLX-SR375 JS)	20	F-1019-03	4	3/8 LOCK WASHER
5	621-143A	2	ARM REST PAD (22HP JAZEE)	21	F-1546	12	5/16-18 X 3/4" GR. 5
-	H-2615	2	ARM REST PAD	22	659-073A	4	T-HANDLE ASSEMBLY
6	659-006P	1	FOOT PANEL	23	F-1015-15	5	5/16-18 X 1" GR. 5
7	F-1158	3	1/4" STOVER NUT	24	F-1538	3	1/4-20 X 3/4", GR.5
8	620-051P	1	LIFT BAR	25	620-050P	3	1" HEAVY WASHER
9	H-2449	1	SEAT ASS'Y (22HP JAZEE)	26	647-086P	2	FLIP SEAT MATING TAB
-	H-2604	1	SEAT ASS'Y (27HP JAZEE & JAZEE PRO)	27	659-175P	2	SEAT HINGE TAB
-	H-2716	1	SEAT ASS'Y (PRO DLX)	28	659-272P	1	BAR, SEAT STOP
10	H-1920	3	SEAT SPRING	29	659-274P	1	PIVOT WASHER
11	F-1394	2	3/8-16 X 1 1/4" GR. 5				

FRONT STEP ASSEMBLY FOR JAZEE PRO SR375



ITEM #	PART #	QTY	DESCRIPTION
1	647-133P	1	FRONT STEP
2	F-1066	2	3/8-16 X 4" BOLT
3	F-1005-03	4	3/8-16 LOCK NUT
4	659-241P	1	STEP MOUNT BRACKET, RH
5	659-242P	1	STEP MOUNT BRACKET, LH
6	H-2461	2	RUBBER BUMPER BUTTON
7	F-1015-23	2	3/8-16 X 3/4" BOLT
8	F-1009-03	4	3/8 FLAT WASHER

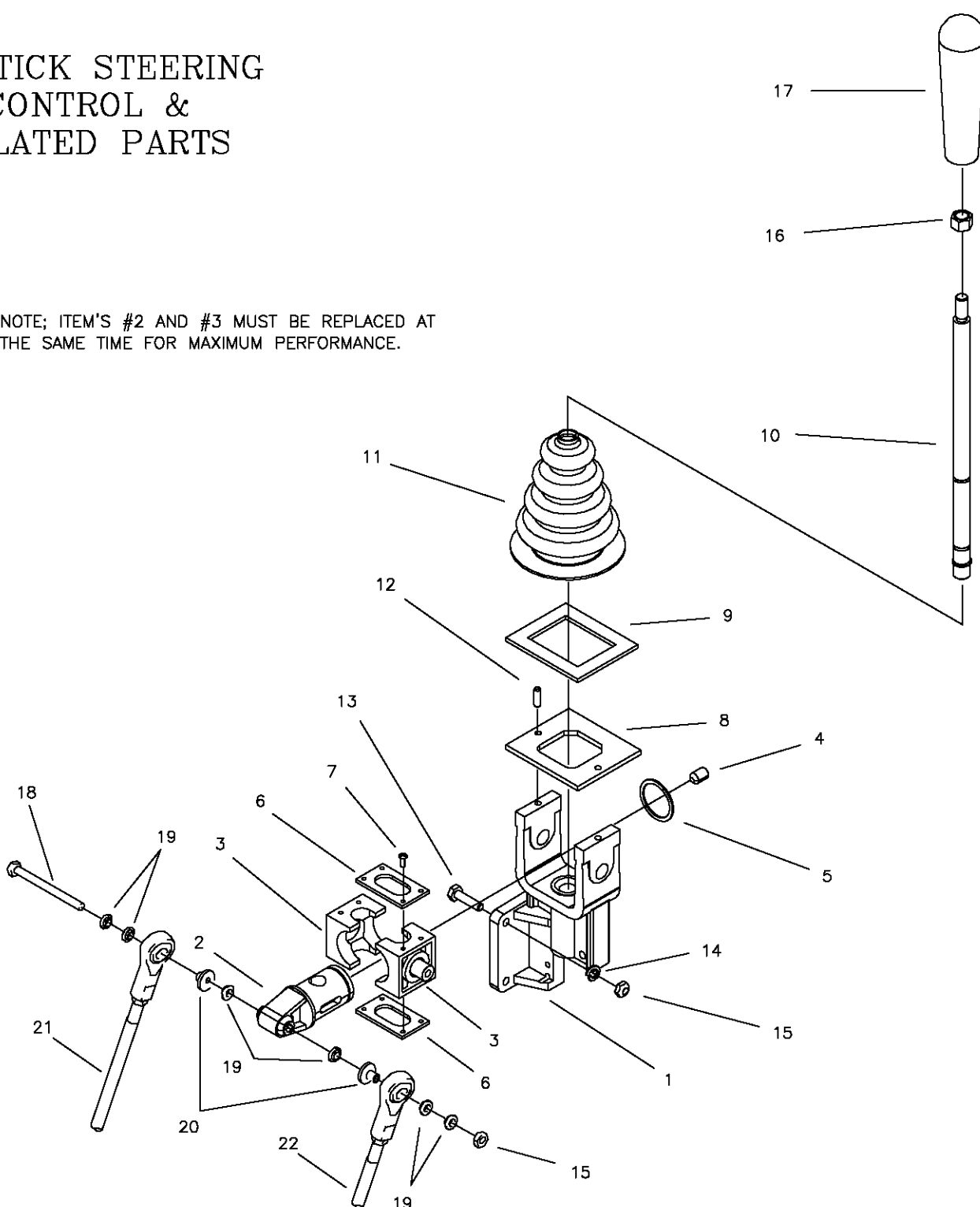
FUEL TANK & RELATED PARTS



ITEM #	PART #	QTY	DESCRIPTION
1	659-066P	1	Tank Mount Clamp
2	659-202P	1	SIDE PANEL LH
3	H-2677	1	Fuel Tank (ASS'Y 659-306A)
4	F-1009-01	1	1/4" Flat Washer
5	F-1015-02	1	1/4-20 x 5/8" Capscrew
6	F-1158	1	1/4-20 Stover Nut
7	H-1648	1	Fuel Line
8	H-1687	2	1/2 O.D. Hose Spring Clamp
9	H-2697	1	VENT LINE
10	H-2698	2	HOSE CLAMP, .406 OD
11	H-1646	1	HOSE BARB 90 DEG.
12	H-1952	1	HOSE CLAMP
13	H-2678	1	REMOTE VENT
14	H-2679	2	REMOTE VENT GROMMET
15	H-2687	1	GAS CAP

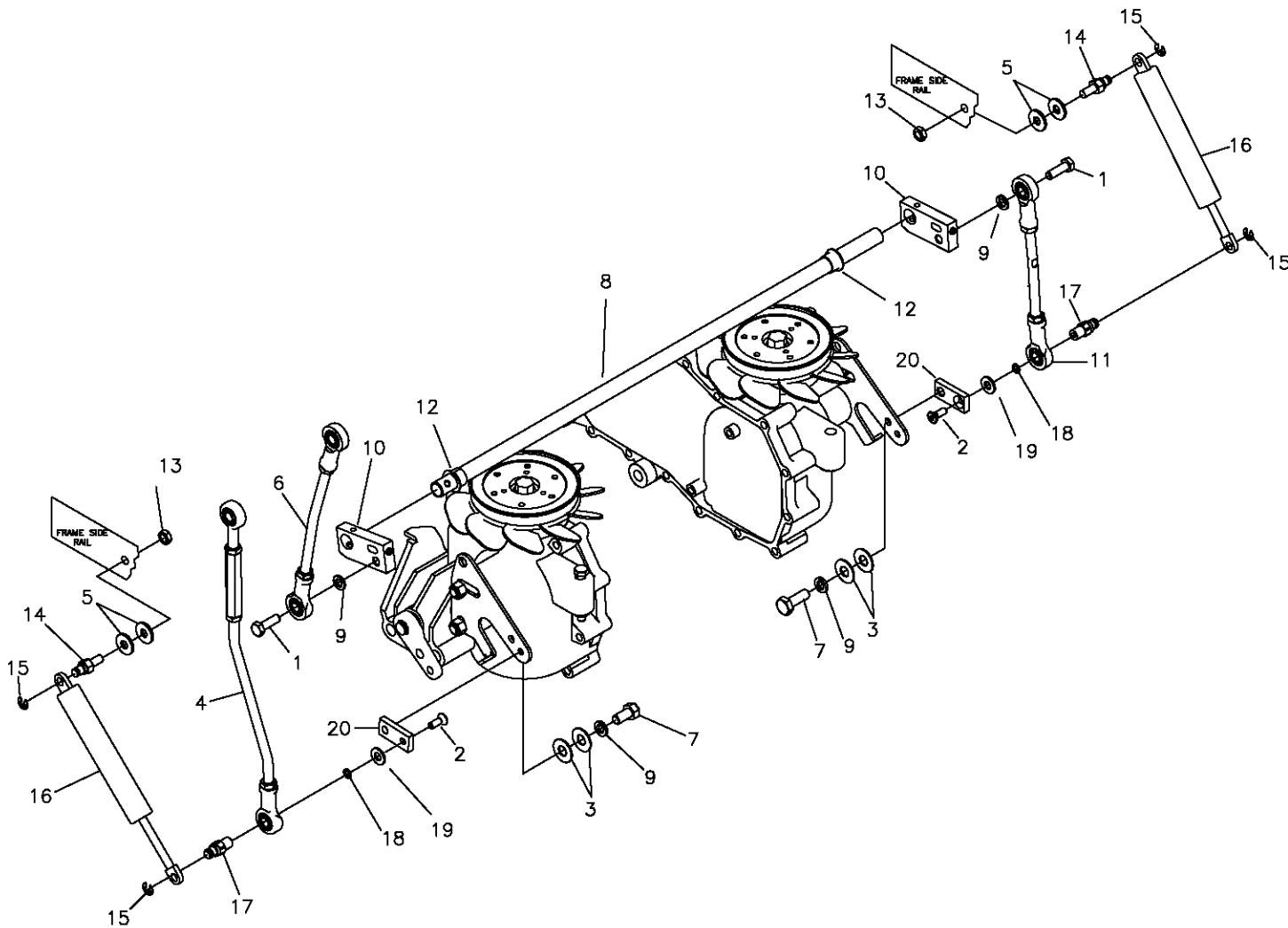
JOYSTICK STEERING CONTROL & RELATED PARTS

NOTE; ITEM'S #2 AND #3 MUST BE REPLACED AT THE SAME TIME FOR MAXIMUM PERFORMANCE.



ITEM #	PART #	QTY	DESCRIPTION	ITEM #	PART #	QTY	DESCRIPTION
-	647-122A	1	JOYSTICK ASSEMBLY	12	F-1999	2	ROLL PIN, 3/16 X 5/8
1	659-144P	1	JOYSTICK YOKE	13	F-1015-05	3	1/4-20 X 1" HHCS GR. 5
2	H-1992	1	PIVOT SHAFT	14	F-1019-01	3	1/4" LOCK WASHER
3	H-1993	2	PIVOT BLOCK	15	F-1158	4	1/4-20 Stover Nut
4	F-1120	1	BALL PLUNGER	16	F-1011-03	1	3/8-16 NUT, JAM
5	H-1997	1	SNAP RING, SPIRLOCK	17	H-2317	1	GRIP, HANDLE
6	619-306P	2	PIVOT BLOCK PLATE	18	F-1020-01	1	1/2-20 X 3-1/2" GR. 5
7	F-2110	8	#6-20 x 1/2" TAPPING, PHILLIPS	19	H-1989	6	BUSHING, BALL JOINT
8	659-129P	1	JOYSTICK TOP PLATE	20	H-2465	2	1/4" SPACER
9	H-1947	1	GASKET, FOAM	21	663-049P	1	UPPER STEERING LINKAGE
10	621-140A	1	JOYSTICK SHAFT ASSEMBLY	22	663-050P	1	STEERING LINKAGE
11	H-1991	1	BOOT, BELLOWS				

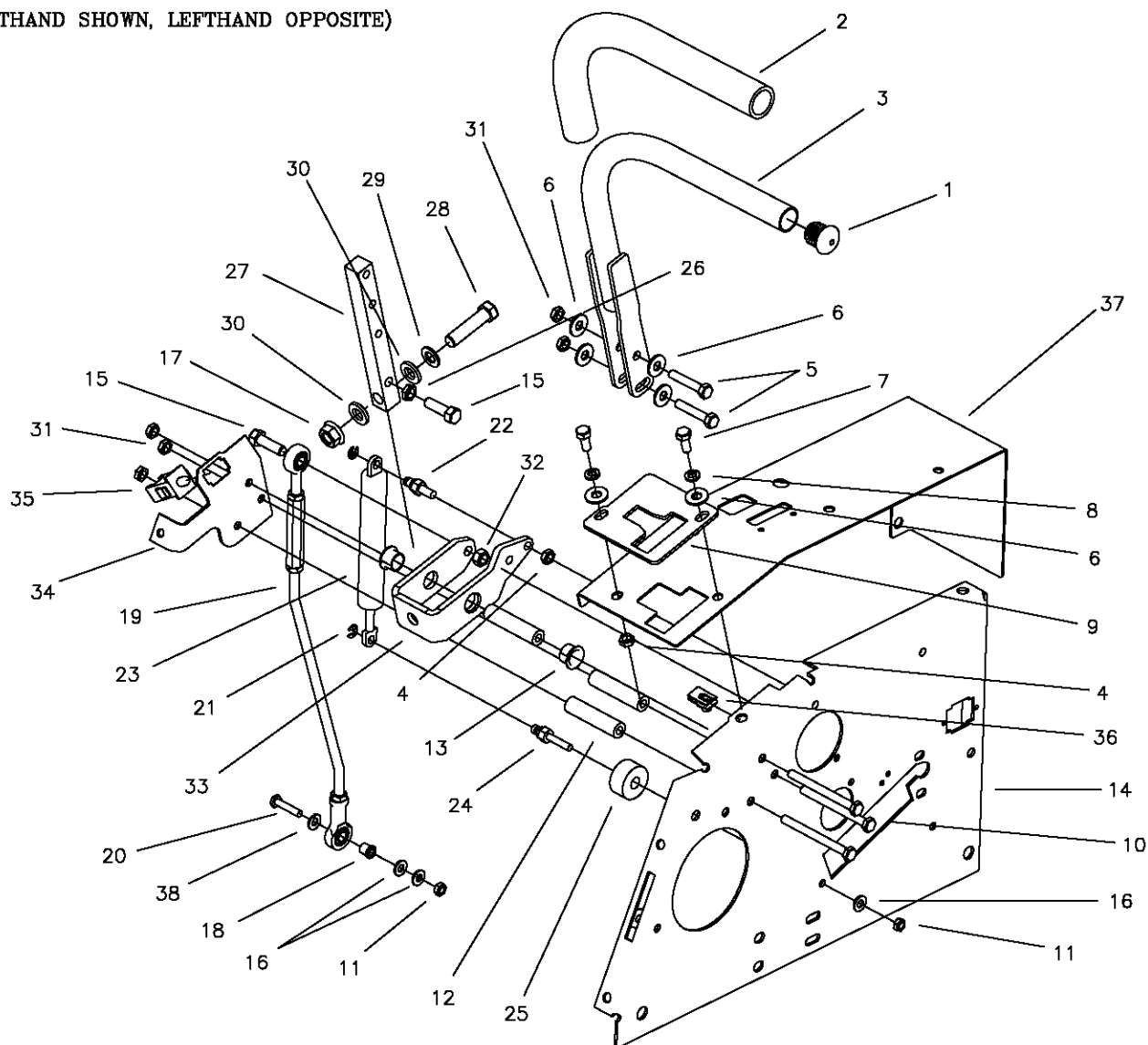
JOYSTICK STEERING CONTROL & RELATED PARTS



ITEM #	PART #	QTY	DESCRIPTION	ITEM #	PART #	QTY	DESCRIPTION
1	F-1394	2	3/8-16 x 1" CAPSCREW	11	659-127P	1	LOWER STEERING LINKAGE
2	F-1609	2	1/4-20 x 3/4" F.H.C.S.	12	D-3730	2	BUSHING
3	F-1009-03	4	3/8" FLAT WASHER	13	F-1125	2	5/16-16 STOVER NUT
4	663-050P	1	STEERING LINKAGE	14	638-028P	2	DAMPER BOLT, 5/16-18 x 3/4
5	F-1009-02	4	5/16" FLAT WASHER	15	F-1610	4	E-RING FOR 1/4" SHAFT
6	663-049P	1	UPPER STEERING LINKAGE	16	H-2467	2	DUAL ACTION DAMPER
7	F-1015-23	2	3/8-16 x 3/4 H.H.C.S.	17	663-051P	2	DAMPER STUD (FEMALE)
8	700-055P	1	ROD, SHIFT CROSS	18	F-1019-01	2	1/4" LOCKWASHER
9	F-1019-03	4	3/8" LOCKWASHER	19	F-1009-01	2	1/4" FLAT WASHER
10	625-091A	2	SWIVEL ARM	20	659-275P	2	TRACKING ADJUSTMENT BLOCK

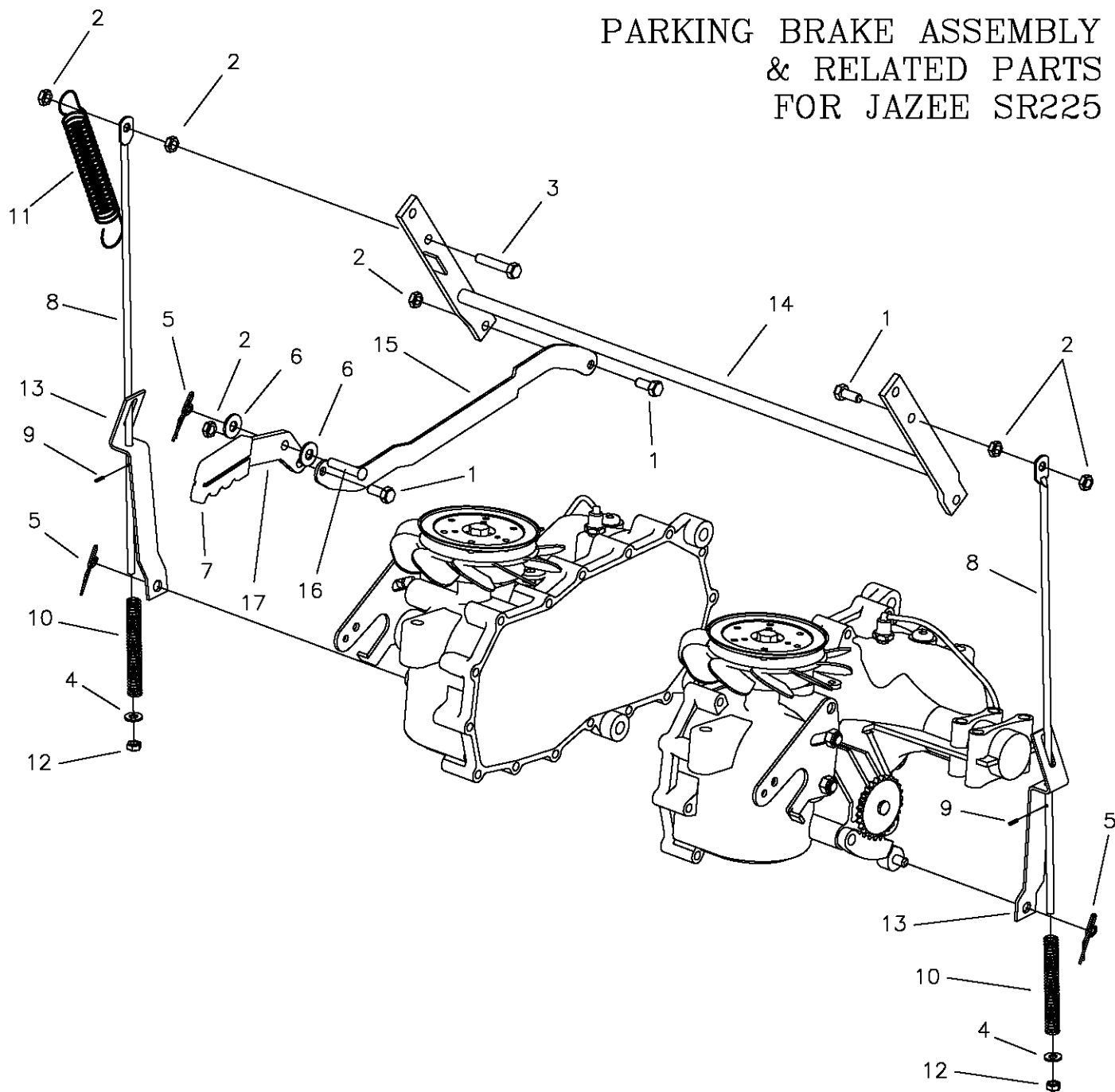
TWINSTICK STEERING CONTROL & RELATED PARTS

(RIGHTHAND SHOWN, LEFTHAND OPPOSITE)



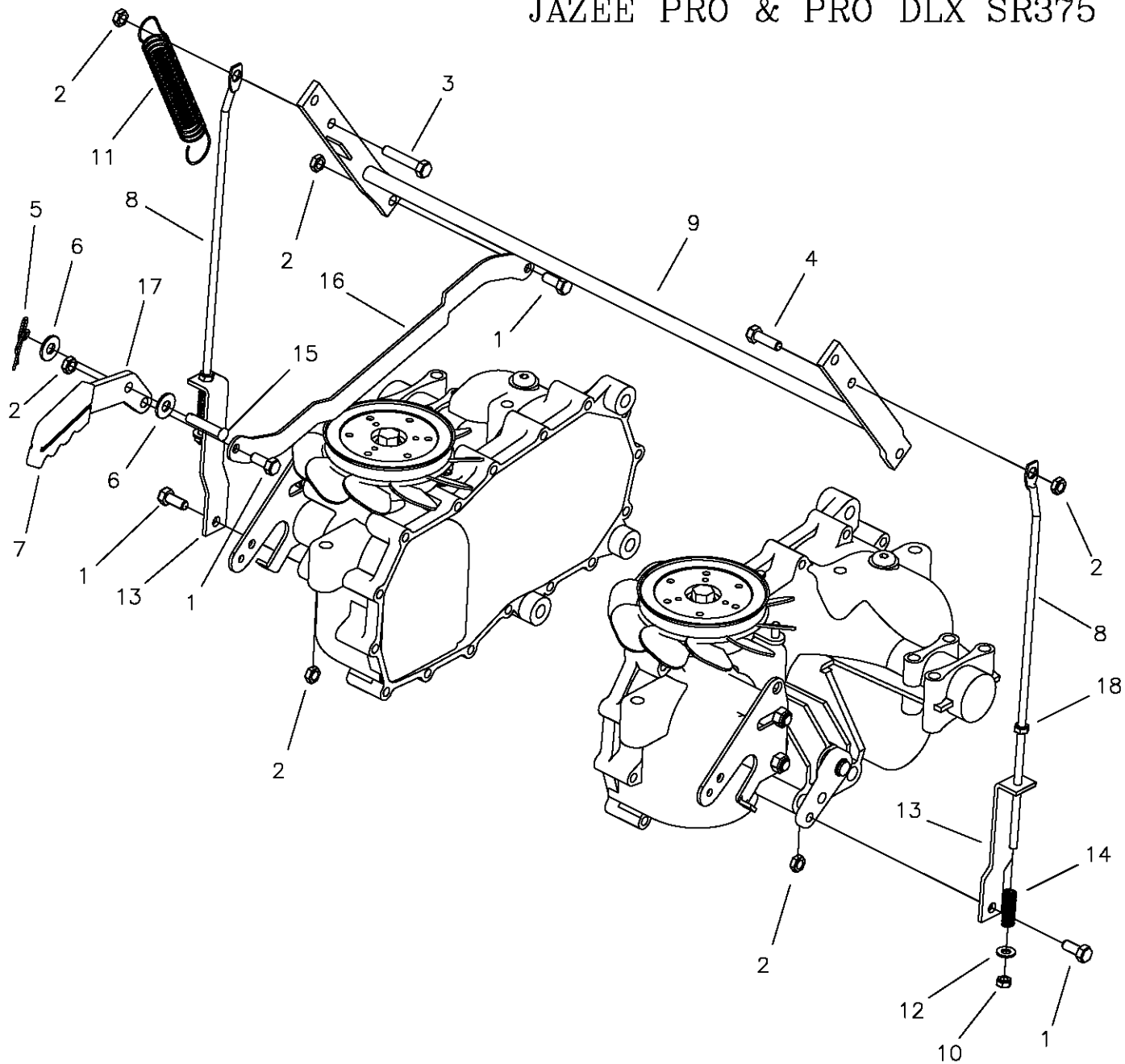
ITEM #	PART #	QTY	DESCRIPTION	ITEM #	PART #	QTY	DESCRIPTION
1	H-2080	2	END PLUG, 15/16" BLACK	21	F-1610	4	E-RING FOR 1/4" SHAFT
2	H-2079	2	FOAM GRIP, 17"	22	638-028P	4	DAMPER BOLT, 5/16-18 X 3/4"
3	659-249W	2	ARM WELDMENT	23	H-2467	2	STEERING DAMPER
4	F-1125	4	5/16 LOCK NUT	24	638-029P	2	DAMPER BOLT 5/16-18 x 3/4"
5	F-1015-18	4	5/16-18 X 1-3/4" HHCS	25	F-2045	2	SPACER
6	F1009-02	12	5/16 FLAT WASHER	26	F-1486	2	3/8-16 JAM NUT
7	F-1015-15	4	5/16-18 x 1" HHCS	27	659-247P	2	LOWER SHIFT BLOCK
8	F-1019-02	4	5/16 LOCK WASHER	28	F-1293	2	1/2-13 x 2" HHCS
9	659-262P	2	NEUTRAL PLATE	29	F-1521	2	1/2" WASHER
10	F-2058	6	5/16-18 X 3-1/2" HHCS	30	606-151P	4	1/2 ID x 1/8 NYLOC WASHER
11	F-1158	4	1/4-20 LOCK NUT	31	F-1005-02	10	5/16-18 NYLOC WASHER
12	659-252P	6	TUBE SPACER	32	F-1005-03	2	3/8-16 LOCK NUT
13	D-3730	4	5/8 FLANGED BUSHING	33	659-243P	2	SHIFTING YOKE
14	659-253W	1	RH SIDE PANEL	34	647-242P	1	RH MOUNTING BRACKET
-	659-255P	1	LH SIDE PANEL	-	647-243P	1	RH MOUNTING BRACKET
15	F-1307	4	3/8-16 x 1-1/2" HHCS	35	E-6474	2	SWITCH, DELTA
16	F-1009-01	6	1/4" FLAT WASHER	36	F-1860	2	5/16-18 "U"-NUT
17	F-2060	2	1/2-13 FLANGED LOCK NUT	37	659-313A	1	RH FENDER CAP-W/DECALS
18	H-2465	2	1/2 x 1/4 SHOULDER WASHER	-	659-257P	1	LH FENDER CAP
19	663-050P	2	STEERING LINKAGE	38	F-1019-01	2	1/4" LOCK WASHER
20	F-1539	4	1/4-20 x 1-1/4" HHCS				

PARKING BRAKE ASSEMBLY & RELATED PARTS FOR JAZEE SR225



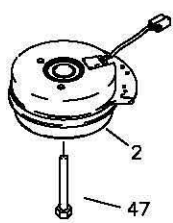
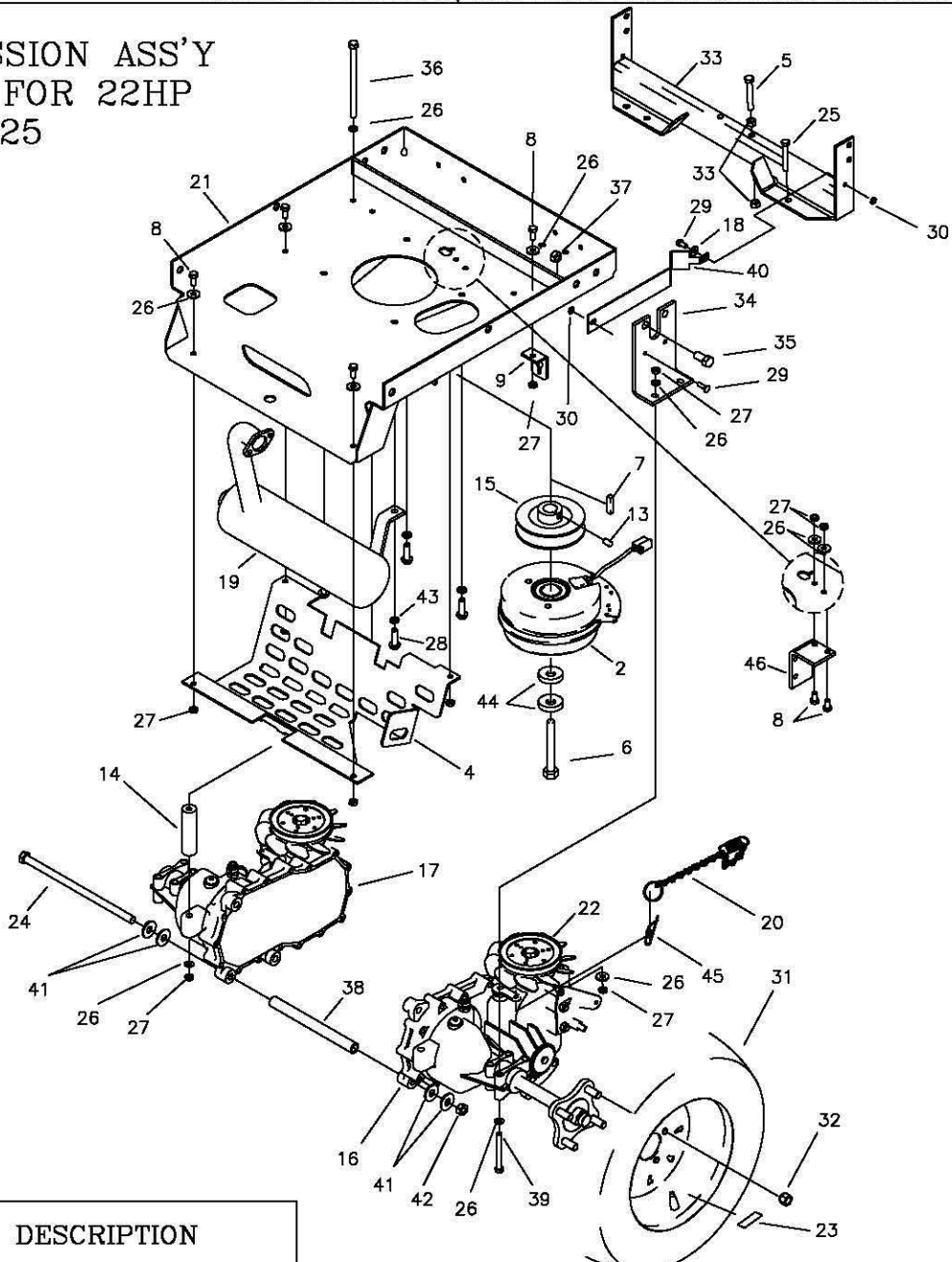
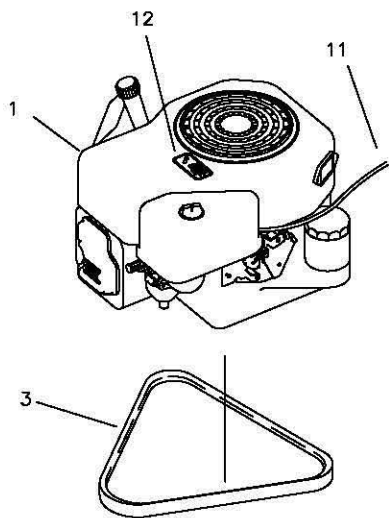
ITEM #	PART #	QTY	DESCRIPTION	ITEM #	PART #	QTY	DESCRIPTION
1	F-1546	3	5/16-18 X 3/4" GR. 5	15	659-203P	1	BRAKE LINK
2	F-1125	6	5/16" STOVER LOCK NUT	16	F-1533	1	5/16 X 1-1/2" CLEVIS PIN
3	F-1015-17	1	5/16-18 X 1-1/2" GR. 5	17	659-308P	1	BRAKE HANDLE
4	F-1009-01	2	1/4" FLAT WASHER				
5	F-1492	3	RUE RING, 5/16-3/8 PIN				
6	F-1009-02	2	5/16" FLAT WASHER				
7	H-1926	1	GRIP, HANDLE, 1/4" X 1"				
8	H-2206	2	BRAKE LINK ROD				
9	H-1800	2	ROLL PIN 3/32 OD X 3/8 LONG				
10	H-2426	2	SPRING, 3.69 X .372 ID X .064				
11	H-1635	1	SPRING, EXT. 3/4 X 4" OAL				
12	F-1748	2	1/4-20 NYLOC NUT				
13	659-013P	2	LOWER BRAKE LINK				
14	659-206W	1	BRAKE ROD WELDMENT				

PARKING BRAKE ASSEMBLY & RELATED PARTS FOR JAZEE PRO & PRO DLX SR375



ITEM #	PART #	QTY	DESCRIPTION	ITEM #	PART #	QTY	DESCRIPTION
1	F-1546	4	5/16-18 X 3/4" H.H.C.S.	15	F-1533	1	5/16 x 1-1/2" CLEVIS PIN
2	F-1125	6	5/16" STOVER LOCK NUT	16	659-203P	1	BRAKE LINK
3	F-1015-17	1	5/16-18 X 1-1/2" H.H.C.S.	17	659-308P	1	BRAKE HANDLE
4	F-1015-15	1	5/16-18 X 1" H.H.C.S	18	F-1158	2	1/4" STOVER LOCK NUT
5	F-1492	2	RUE RING, 5/16-3/8 PIN				
6	F-1009-02	2	5/16" FLAT WASHER				
7	H-1926	1	HANDLE GRIP				
8	H-2452	2	BRAKE LINK BAR, BENT				
9	659-206W	1	BRAKE ROD WELDMENT				
10	F-1748	2	1/4" NYLOC LOCK NUT				
11	H-1635	1	EXTENSION SPRING 3/4 X 4"				
12	F-1009-01	2	1/4" FLAT WASHER				
13	659-159P	2	LOWER BRAKE LINK				
14	H-1637	2	COMPRESSION SPRING				

MOTOR & TRANSMISSION ASS'Y
& RELATED PARTS FOR 22HP
KOHLER JAZEE SR225

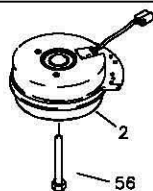
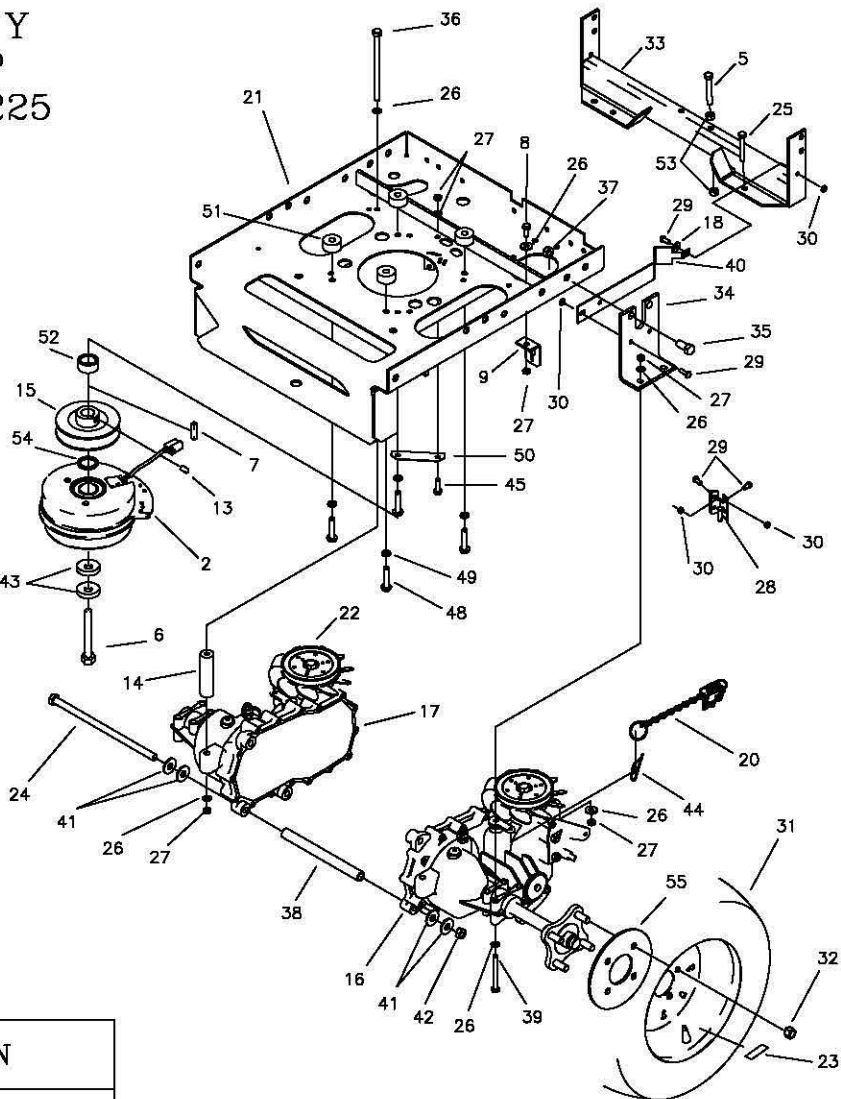
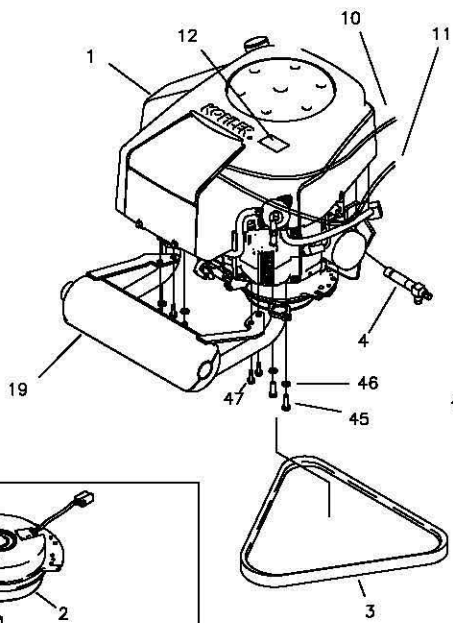


CLUTCH MOUNTING FOR
SERIAL #659FX1 & 659FY2
AND HIGHER.

ITEM #	PART #	QTY	DESCRIPTION
1	M-5386	1	22 HP. KOHLER ENGINE
2	E-6317	1	CLUTCH-BRAKE
3	D-3524	1	V-BELT-A71 KEVLAR
4	700-059P	1	MUFFLER HEAT SHIELD
5	F-1015-30	1	3/8-16 x 2-1/2" CAPSCREW
6	F-1545	1	7/16-20 X 3"
7	621-113P	1	KEY, 1/4 SQ. X 1-1/4"
8	F-1546	6	5/16-18 X 3/4" BOLT
9	659-119P	2	FREE WHEEL ANCHOR
10	F-1005-03	2	3/8-16 STOVER NUT
11	H-2609	1	THROTTLE CABLE
12	P-10077-11	1	DECAL, "CLEAN"
13	F-1228	1	SETSCREW, 1/4" X 1/4"
14	659-121P	2	REAR HYDRO BRACE
15	D-3726	1	MOTOR PULLEY
16	D-3783-01	1	TRANSAXLE HYDRO (RH)
17	D-3783-02	1	TRANSAXLE HYDRO (LH)
18	F-1009-01	4	1/4" FLAT WASHER
19	H-2694	1	MUFFLER
20	661-066P	2	FREEWHEEL CHAIN W/SPRING
21	700-024W	1	MOTOR MOUNT
22	H-2539	2	FAN BLADE REPLACEMENT
23	P-11384	2	DECAL, TIRE PRESSURE, 12 PSI
24	F-2048	1	3/8-16 X 12" HEX BOLT
25	F-1820	2	5/16-18 x 2-1/4" CAPSCREW
26	F-1009-02	14	5/16" FLAT WASHER

ITEM #	PART #	QTY	DESCRIPTION
27	F-1125	14	5/16-18 LOCK NUT
28	F-2085	4	3/8-16 x 1-1/4" SELF TAPPING
29	F-1015-02	4	1/4-20 X 5/8" GR. 5
30	F-1158	4	1/4-20 LOCK NUTS
31	D-3870	2	TIRE, 18 X 9.5-8
32	F-1499	8	LUG NUT, 1/2 X 20
33	659-296W	1	BRACE WELDMENT
34	659-116P	2	HYDRO MOUNT BRACE
35	F-1386	4	1/2-13 X 1-1/4" BOLT
36	F-1652	2	5/16-18 X 6" BOLT
37	F-1005-05	4	1/2" STOVER LOCK NUT
38	659-120P	1	HYDRO BRACE
39	F-1544	4	5/16-18 X 3" BOLT
40	659-156P	2	FAN SHROUD
41	F-1009-03	4	3/8" FLAT WASHER
42	F-1005-03	1	3/8-16 LOCK NUT
43	F-1019-03	4	3/8" LOCK WASHER
44	606-347P	2	15/32" I.D. WASHER
45	F-1492	2	5/16-3/8 RUE RING
46	700-26P	1	CLUTCH STOP
47	F-2113	1	7/16-20x2-1/2" CAPSCREW, GR8

MOTOR & TRANSMISSION ASS'Y
& RELATED PARTS FOR 27HP
KOHLER COURAGE JAZEE SR225
& JAZEE PRO SR375

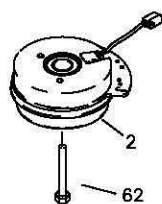
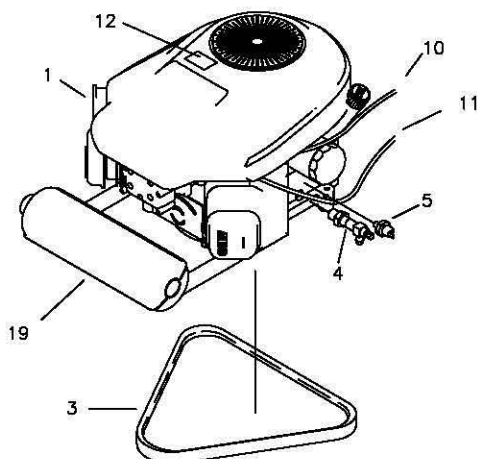


CLUTCH MOUNTING FOR SERIAL #S 659FG2, 659FH13, 659FH15, 659FJ14, 659FO9, 659FP2, 659FQ45, 659FR9, 659FS57, 659FZ1, & 659GA1 AND HIGHER.

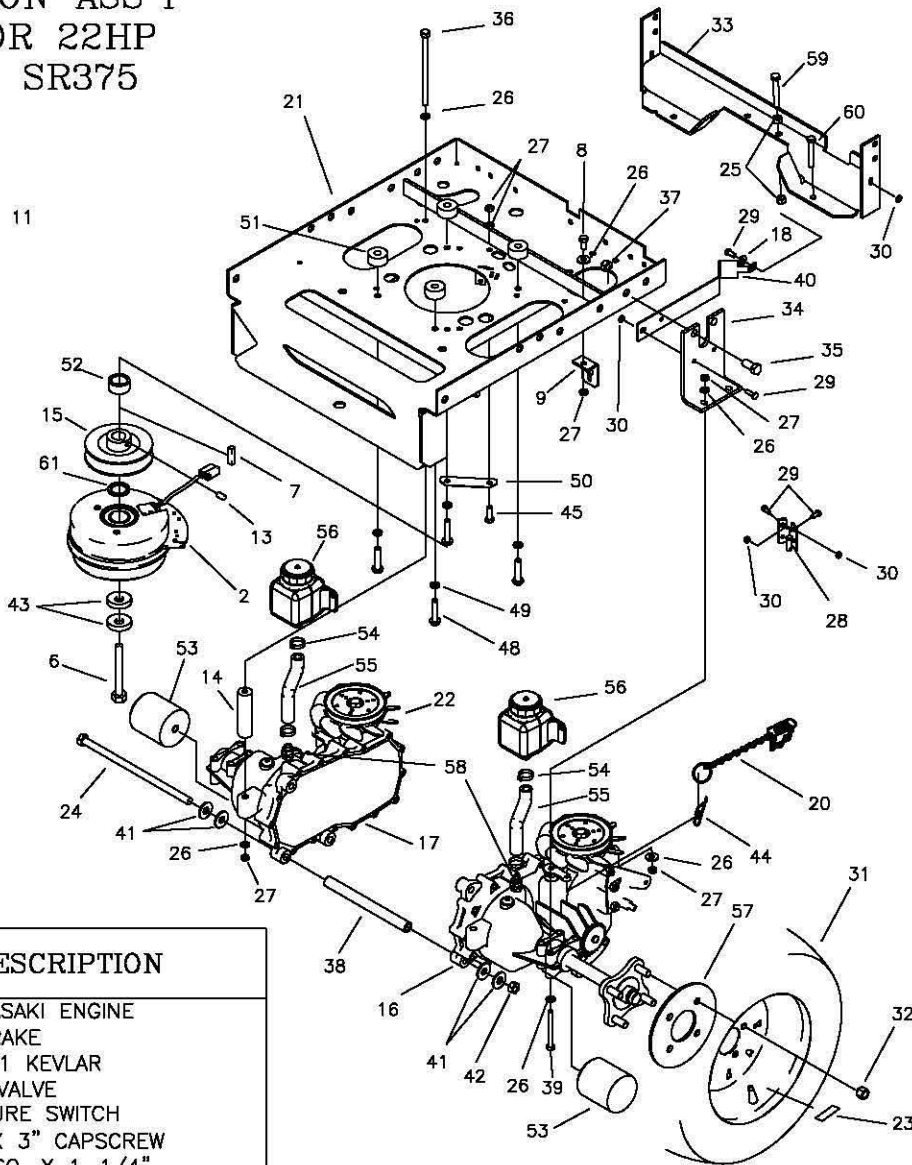
ITEM #	PART #	QTY	DESCRIPTION
1	M-5385	1	27 HP. KOHLER ENGINE
2	E-6247	1	CLUTCH-BRAKE
3	D-3524	1	V-BELT-A71 KEVLAR
4	H-2589	1	OIL DRAIN VALVE
5	F-1015-30	1	3/-16 x 2-1/2" CAPSCREW
6	F-1904	1	7/16-20 X 2-1/2" CAPSCREW
7	621-113P	1	KEY, 1/4 SQ. X 1-1/4"
8	F-1546	2	5/16-18 X 3/4" BOLT
9	659-119P	2	FREE WHEEL ANCHOR
10	H-2404	1	CHOKE CABLE
11	H-2610	1	THROTTLE CABLE
12	P-10077-11	1	DECAL, "CLEAN"
13	F-1228	1	SETSCREW, 1/4" X 1/4"
14	659-121P	2	REAR HYDRO BRACE
15	647-036P	1	MOTOR PULLEY (JAZEE SR225)
-	659-154P	1	MOTOR PULLEY (JAZEE PRO SR375)
16	D-3783-01	1	TRANSAXLE HYDRO (RH)
17	D-3783-02	1	TRANSAXLE HYDRO (LH)
18	F-1009-01	4	1/4" FLAT WASHER
19	H-2513	1	MUFFLER
20	661-066P	2	FREEWHEEL CHAIN W/SPRING
21	659-174W	1	MOTOR MOUNT
22	H-2539	2	FAN BLADE REPLACEMENT
23	P-11384	2	DECAL, TIRE PRESSURE, 12 PSI
24	F-2048	1	3/8-16 X 12" HEX BOLT
25	F-1820	2	5/16-18 x 2-1/4" CAPSCREW
26	F-1009-02	14	5/16" FLAT WASHER
27	F-1125	10	5/16-18 LOCK NUT
28	659-015W	1	CLUTCH STOP WELDMENT
29	F-1015-02	6	1/4-20 X 5/8" GR. 5
30	F-1158	6	1/4-20 LOCK NUTS
31	D-3780	2	TIRE, 18 X 9.5-8 (JAZEE-SR225)
-	D-3353	2	TIRE, 20 X 10-10 (SR375 w/48" DECKS)
-	D-3787	2	TIRE, 20 X 12-10 (SR375 w/52" & 60" DECKS)

ITEM #	PART #	QTY	DESCRIPTION
8	F-1499	1	LUG NUT, 1/2 X 20
33	659-296W	1	BRACE WELDMENT
34	659-116P	2	HYDRO MOUNT BRACE
35	F-1386	2	1/2-13 X 1-1/4" BOLT
36	F-1652	2	5/16-18 X 6" BOLT
37	F-1005-05	2	1/2" STOVER LOCK NUT
38	659-120P	1	HYDRO BRACE
39	F-1544	4	5/16-18 X 3" BOLT
40	659-156P	2	FAN SHROUD
41	F-1009-03	4	3/8" FLAT WASHER
42	F-1005-03	1	3/8-16 LOCK NUT
43	606-347P	2	15/32" I.D. WASHER
44	F-1492	2	5/16-3/8 RUE RING
45	F-1015-15	4	5/16-18 x 1" CAPSCREW
46	F-1019-02	4	5/16" LOCK WASHER
47	F-2049	4	M-6 x 1.0 x 20 H.F. FORM SCREW
48	F-2055	4	3/8-16 x 1-3/4" CAPSCREW
49	F-1019-03	4	3/8" LOCK WASHER
50	647-085P	1	GROUND STRAP
51	F-2045	4	SPACER
52	F-2043	1	SPACER
53	F-1005-03	2	3/8-16 STOVER NUT
54	611-143P	1	1-3/16" 10GA WASHER
55	659-092P	2	WHEEL BACKING PLATE (JAZEE PRO SR375)
56	F-2113	1	7/16-20x2-1/2" CAPSC, CAPSCREW, GR8

MOTOR & TRANSMISSION ASS'Y & RELATED PARTS FOR 22HP KAWASAKI JAZEE PRO SR375



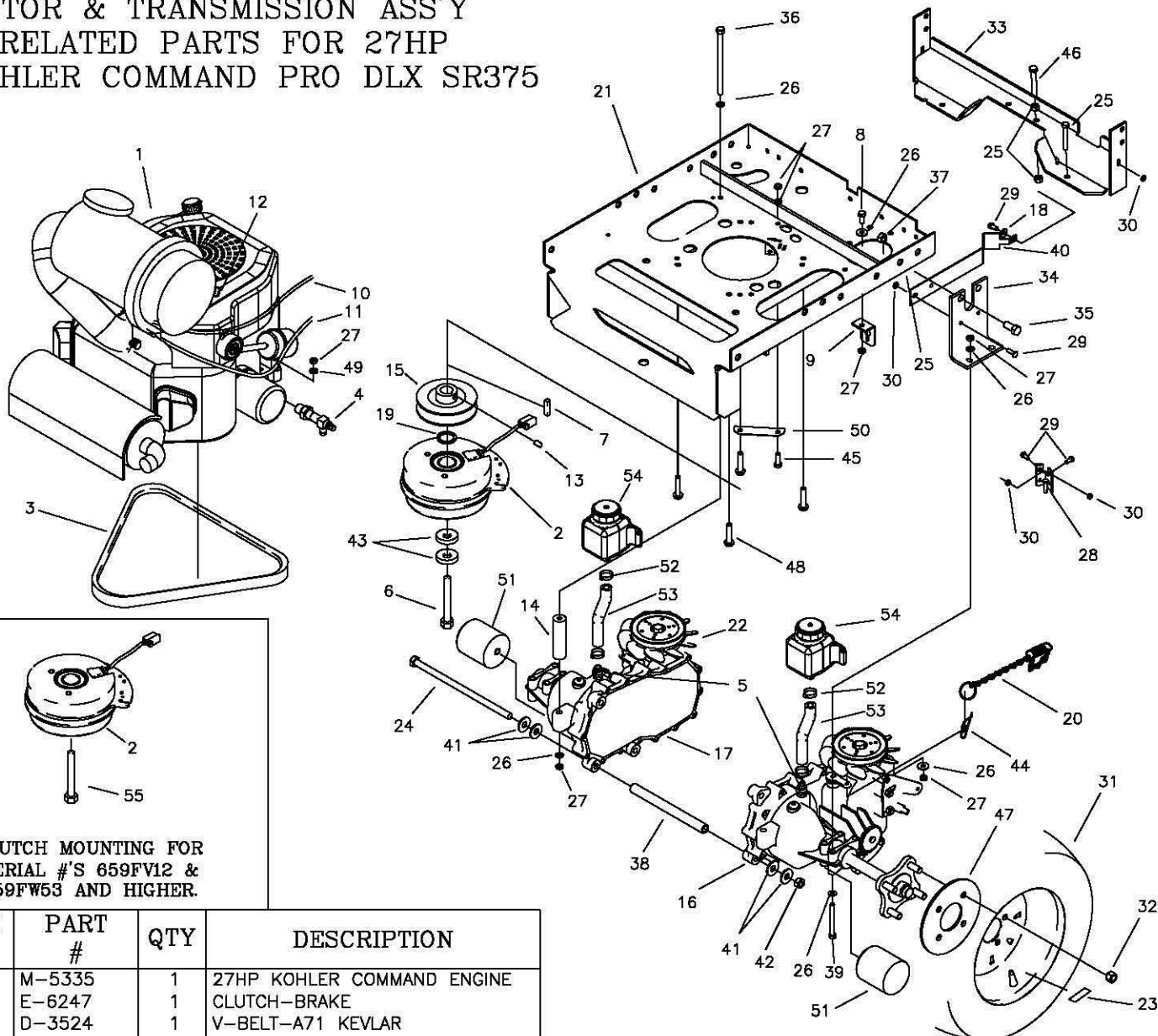
CLUTCH MOUNTING FOR
SERIAL #'S 659FKL, 659FL14,
659FM13, & 659FN59
AND HIGHER.



ITEM #	PART #	QTY	DESCRIPTION
1	M-5375	1	22HP KAWASAKI ENGINE
2	E-6247	1	CLUTCH-BRAKE
3	D-3524	1	V-BELT-A71 KEVLAR
4	H-2590	1	OIL DRAIN VALVE
5	E-6307	1	OIL PRESSURE SWITCH
6	F-1904	1	7/16-20 X 3" CAPSCREW
7	621-113P	1	KEY, 1/4 SQ. X 1-1/4"
8	F-1546	2	5/16-18 X 3/4" BOLT
9	659-119P	1	FREE WHEEL ANCHOR
10	H-2235	1	CHOKE CABLE
11	H-2610	1	THROTTLE CABLE
12	P-10077-11	1	DECAL, "CLEAN"
13	F-1228	1	SETSCREW, 1/4" X 1/4"
14	659-121P	2	REAR HYDRO BRACE
15	659-154P	1	MOTOR PULLEY
16	D-3788-01	1	TRANSAXLE ZT-3100 (RH)
17	D-3788-02	1	TRANSAXLE ZT-3100 (LH)
18	F-1009-01	4	1/4" FLAT WASHER
19	H-2607	1	MUFFLER
20	659-066P	2	FREEWHEEL CHAIN W/SPRING
21	659-174W	1	MOTOR MOUNT
22	H-2539	2	FAN BLADE REPLACEMENT
23	P-11384	2	DECAL, TIRE PRESSURE, 12 PSI
24	F-2007	1	3/8-16 X 12-1/2" HEX BOLT
25	F-1005-05	2	1/2-13 STOVER NUT
26	F-1009-02	14	5/16" FLAT WASHER
27	F-1125	10	5/16-18 LOCK NUT
28	659-015W	1	CLUTCH STOP WELDMENT
29	F-1015-02	8	1/4-20 X 5/8" GR. 5
30	F-1158	8	1/4-20 LOCK NUTS
31	D-3353	2	TIRE, 20"x10-10 (W/48" DECKS)
-	D-3787	2	TIRE, 20"x12-10 (W/52" & 60" DECKS)
32	F-1499	8	LUG NUT, 1/2 X 20
33	659-296W	1	BRACE WELDMENT
34	659-116P	2	HYDRO MOUNT BRACE
35	F-1386	2	1/2-13 X 1-1/4" BOLT
36	F-1652	2	5/16-18 X 6" BOLT

ITEM #	PART #	QTY	DESCRIPTION
37	F-1005-05	2	1/2" STOVER LOCK NUT
38	659-173P	1	HYDRO BRACE
39	F-1544	4	5/16-18 X 3" BOLT
40	659-156P	2	FAN SHROUD
41	F-1009-03	4	3/8" FLAT WASHER
42	F-1005-03	1	3/8-16 LOCK NUT
43	606-347P	2	15/32" I.D. WASHER
44	F-1492	2	5/16-3/8 RUE RING
45	F-1015-15	3	5/16-18 x 1" CAPSCREW
46	F-1019-12	2	5/16" LOCK WASHER
47	F-2049	2	M-6 x 1.0 x 20 H.F. FORM SCREW
48	F-2055	4	3/8-16 x 1-3/4" CAPSCREW
49	F-1019-03	4	3/8" LOCK WASHER
50	647-085P	1	GROUND STRAP
51	F-2045	4	SPACER
52	F-2043	1	SPACER
53	H-2567	2	TRANSAXLE OIL FILTER
54	H-2535	4	HOSE CLAMP
55	H-2549	2	HOSE 5" LONG
56	D-3791	2	SMALL HYDRO TANK
57	659-092P	2	WHEEL BACKING PLATE
58	H-2517	2	VENT TUBE ADAPTER
59	F-1015-30	1	3/8-16 x 2-1/2" CAPSCREW
60	F-1820	2	5/16-18 x 2-1/4" CAPSCREW
61	611-143P	1	1-3/16" 10GA WASHER
62	F-2113	1	7/16-20x2-1/2" CAPSCREW, GR8

MOTOR & TRANSMISSION ASS'Y & RELATED PARTS FOR 27HP KOHLER COMMAND PRO DLX SR375

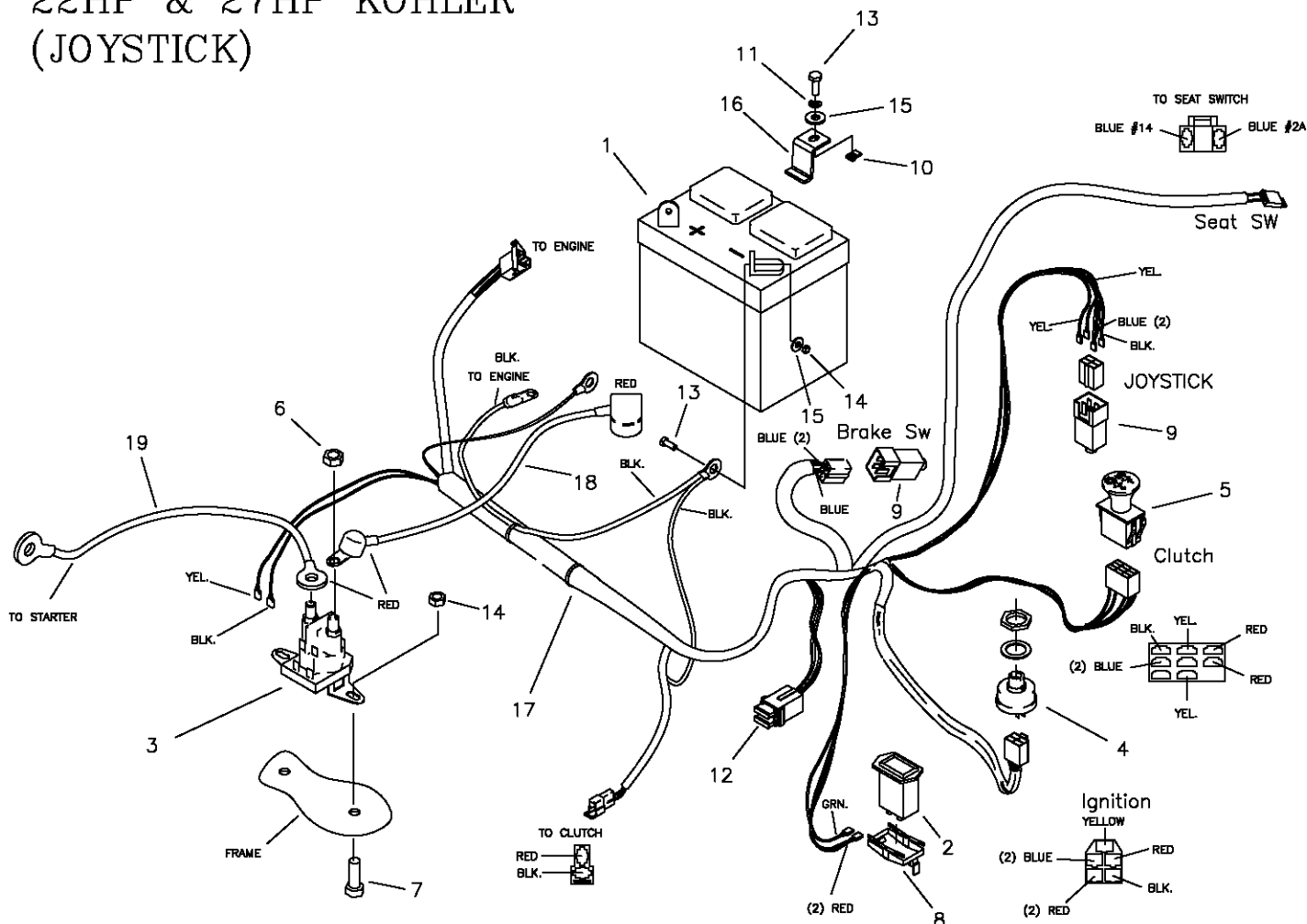


CLUTCH MOUNTING FOR
SERIAL #'S 659FV12 &
659FW53 AND HIGHER.

ITEM #	PART #	QTY	DESCRIPTION
1	M-5335	1	27HP KOHLER COMMAND ENGINE
2	E-6247	1	CLUTCH-BRAKE
3	D-3524	1	V-BELT-A71 KEVLAR
4	H-2589	1	OIL DRAIN VALVE
5	H-2517	2	VENT TUBE ADAPTER
6	F-1545	1	7/16-20 X 2-1/2" CAPSCREW
7	621-113P	1	KEY, 1/4 SQ. X 1-1/4"
8	F-1546	2	5/16-18 X 3/4" BOLT
9	659-119P	1	FREE WHEEL ANCHOR
10	H-2404	1	CHOKE CABLE
11	H-2610	1	THROTTLE CABLE
12	P-10077-11	1	DECAL, "CLEAN"
13	F-1228	1	SETSCREW, 1/4" X 1/4"
14	659-121P	2	REAR HYDRO BRACE
15	659-154P	1	MOTOR PULLEY
16	D-3788-01	1	TRANSAXLE ZT-3100 (RH)
17	D-3788-02	1	TRANSAXLE ZT-3100 (LH)
18	F-1009-01	4	1/4" FLAT WASHER
19	611-143P	1	1-3/16" 10GA WASHER
20	659-066P	2	FREEWHEEL CHAIN W/SPRING
21	659-174W	1	MOTOR MOUNT 24HP KOHLER
22	H-2539	2	FAN BLADE REPLACEMENT
23	P-11384	2	DECAL, TIRE PRESSURE, 12 PSI
24	F-2007	1	3/8-16 X 12-1/2" HEX BOLT
25	F-1820	2	5/16-18 x 2-1/4" CAPSCREW
26	F-1009-02	14	5/16" FLAT WASHER
27	F-1125	10	5/16-18 LOCK NUT
28	659-015W	1	CLUTCH STOP WELDMENT
29	F-1015-02	8	1/4-20 X 5/8" GR. 5
30	F-1158	8	1/4-20 LOCK NUTS
31	D-3787	2	TIRE, 20"x12-10

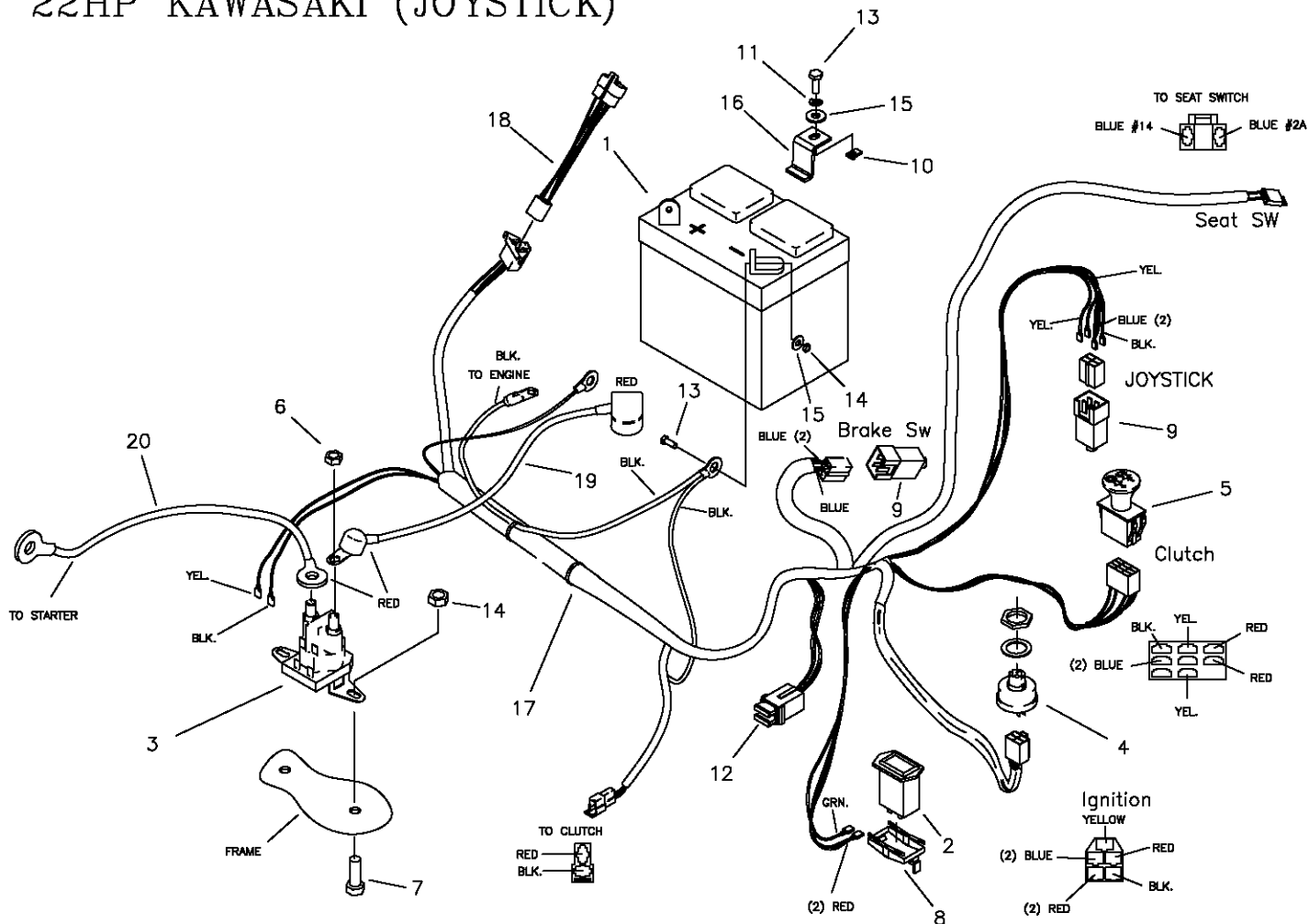
ITEM #	PART #	QTY	DESCRIPTION
32	F-1499	8	LUG NUT, 1/2 X 20
33	659-296W	1	BRACE WELDMENT
34	659-116P	2	HYDRO MOUNT BRACE
35	F-1386	2	1/2-13 X 1-1/4" BOLT
36	F-1652	2	5/16-18 X 6" BOLT
37	F-1005-05	2	1/2" STOVER LOCK NUT
38	659-173P	1	HYDRO BRACE
39	F-1544	4	5/16-18 X 3" BOLT
40	659-156P	2	FAN SHROUD
41	F-1009-03	4	3/8" FLAT WASHER
42	F-1005-03	1	3/8-16 LOCK NUT
43	606-347P	2	15/32" I.D. WASHER
44	F-1492	2	5/16-3/8 RUE RING
45	F-1015-15	1	5/16-18 x 1" CAPSCREW
46	F-1015-30	1	3/8-16 x 2-1/2" CAPSCREW
47	659-092P	2	WHEEL BACKING PLATE
48	F-1015-17	4	5/16-18 x 1-1/2" CAPSCREW
49	F-1019-02	4	5/16" LOCK WASHER
50	647-085P	1	GROUND STRAP
51	H-2567	2	TRANSAXLE OIL FILTER
52	H-2535	4	HOSE CLAMP
53	H-2549	2	HOSE 5" LONG
54	D-3791	2	SMALL HYDRO TANK
55	F-2113	1	7/16-20x2-1/2" CAPSCREW, GR8

E-6405 WIRE HARNESS & RELATED PARTS FOR 22HP & 27HP KOHLER (JOYSTICK)



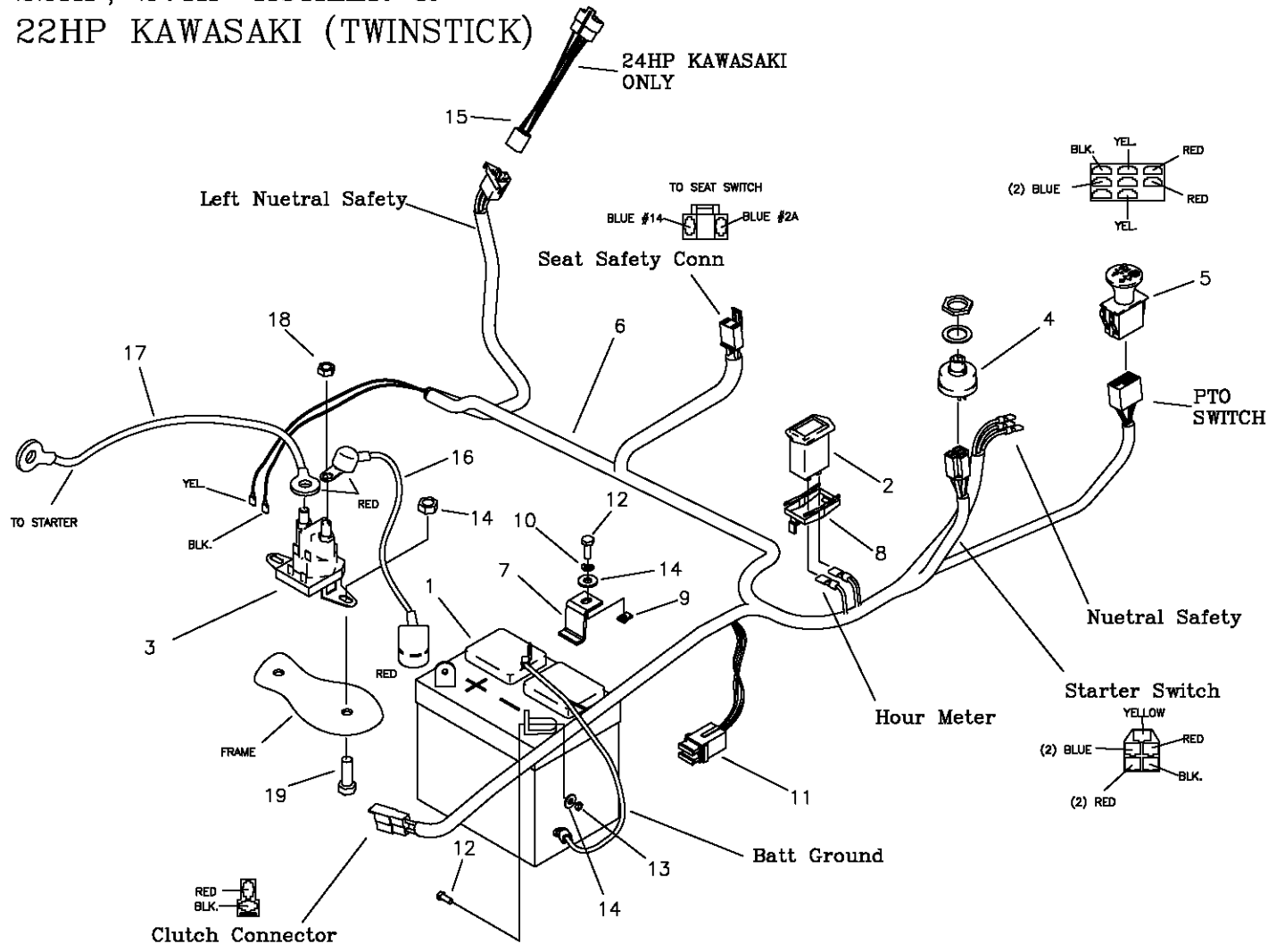
ITEM #	PART #	QTY	DESCRIPTION
1	E-5812	1	BATTERY (22HP KOHLER)
-	E-6271	1	BATTERY (22HP KAW & 27HP KOH)
2	E-5878	1	HOUR METER
3	E-6054	1	SOLENOID
4	E-5873	1	START SWITCH
5	E-6403	1	CLUTCH SWITCH
6	F-1011-01	2	1/4-20 NUT
7	F-1015-02	2	1/4-20 x 5/8" CAPSCREW
8	E-6369	1	RETAINER CLIP
9	E-6297	2	BRAKE SWITCH
10	F-1858	1	1/4-20 U-NUT
11	F-1019-01	1	1/4" LOCK WASHER
12	E-6207	2	FUSE, #ATC-30
13	F-1538	3	1/4-20 x 3/4" CAPSCREW
14	F-1158	5	1/4-20 STOVER NUT
15	F-1009-01	5	1/4" FLAT WASHER
16	659-137P	1	BATTERY HOLD DOWN
17	E-6405	1	WIRE HARNESS
18	E-6418	1	CABLE, BATTERY TO SOLENOID
19	E-6419	1	CABLE, SOLENOID TO ENGINE
-NOT SHOWN-			
	E-6374	1	SEAT SWITCH
	E-6281	1	KEY SWITCH

E-6415 WIRE HARNESS & RELATED PARTS FOR 22HP KAWASAKI (JOYSTICK)



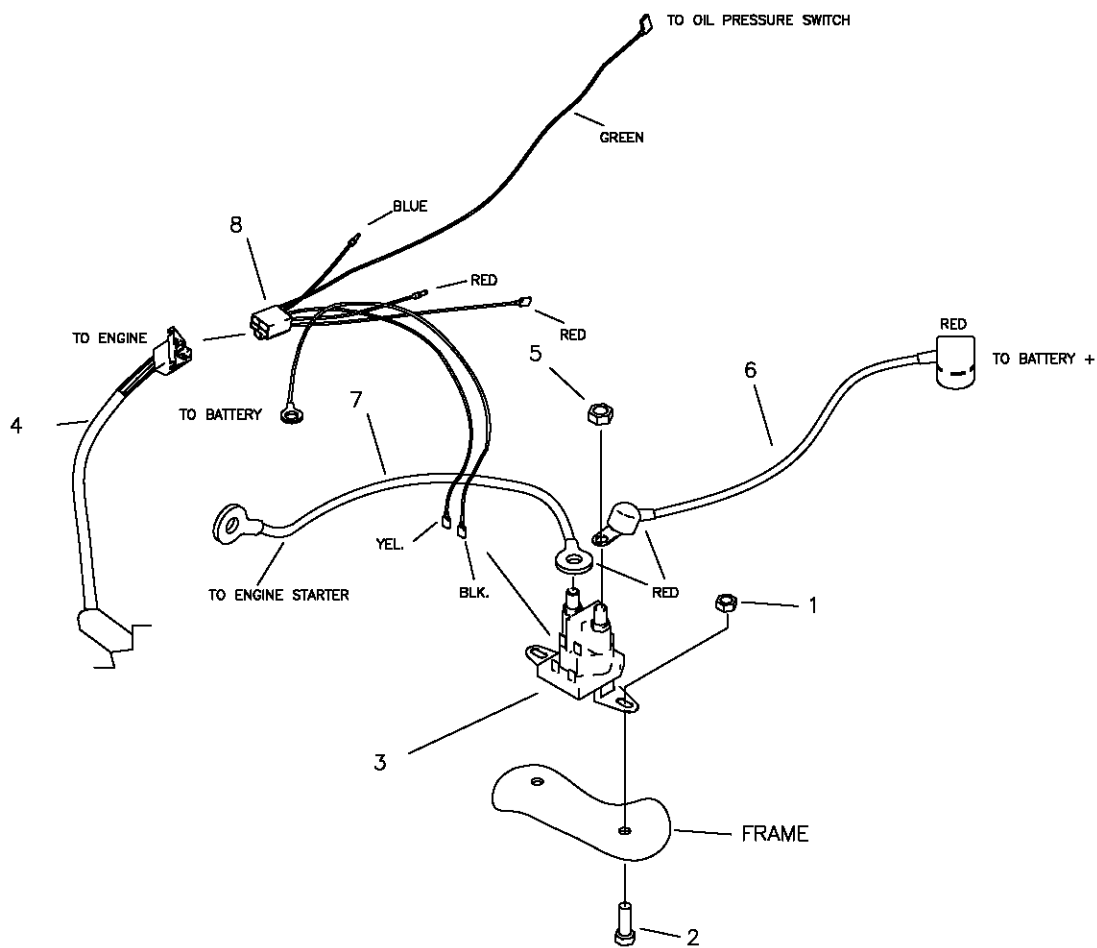
ITEM #	PART #	QTY	DESCRIPTION
1	E-6271	1	BATTERY
2	E-5878	1	HOUR METER
3	E-6054	1	SOLENOID
4	E-5873	1	START SWITCH
5	E-6403	1	CLUTCH SWITCH
6	F-1011-01	2	1/4-20 NUT
7	F-1015-02	2	1/4-20 x 5/8" CAPSCREW
8	E-6369	1	RETAINER CLIP
9	E-6297	2	BRAKE SWITCH
10	F-1858	1	1/4-20 U-NUT
11	F-1019-01	1	1/4" LOCK WASHER
12	E-6207	2	FUSE, #ATC-30
13	F-1538	3	1/4-20 x 3/4" CAPSCREW
14	F-1158	5	1/4-20 STOVER NUT
15	F-1009-01	5	1/4" FLAT WASHER
16	659-137P	1	BATTERY HOLD DOWN
17	E-6415	1	WIRE HARNESS
18	E-6417	1	WIRE HARNESS ADAPTER
19	E-6418	1	CABLE, BATTERY TO SOLENOID
20	E-6419	1	CABLE, SOLENOID TO ENGINE
-NOT SHOWN-			
	E-6374	1	SEAT SWITCH
	E-6281	1	KEY SWITCH

E-6416 WIRE HARNESS & RELATED PARTS FOR 22HP, 27HP KOHLER & 22HP KAWASAKI (TWINSTICK)



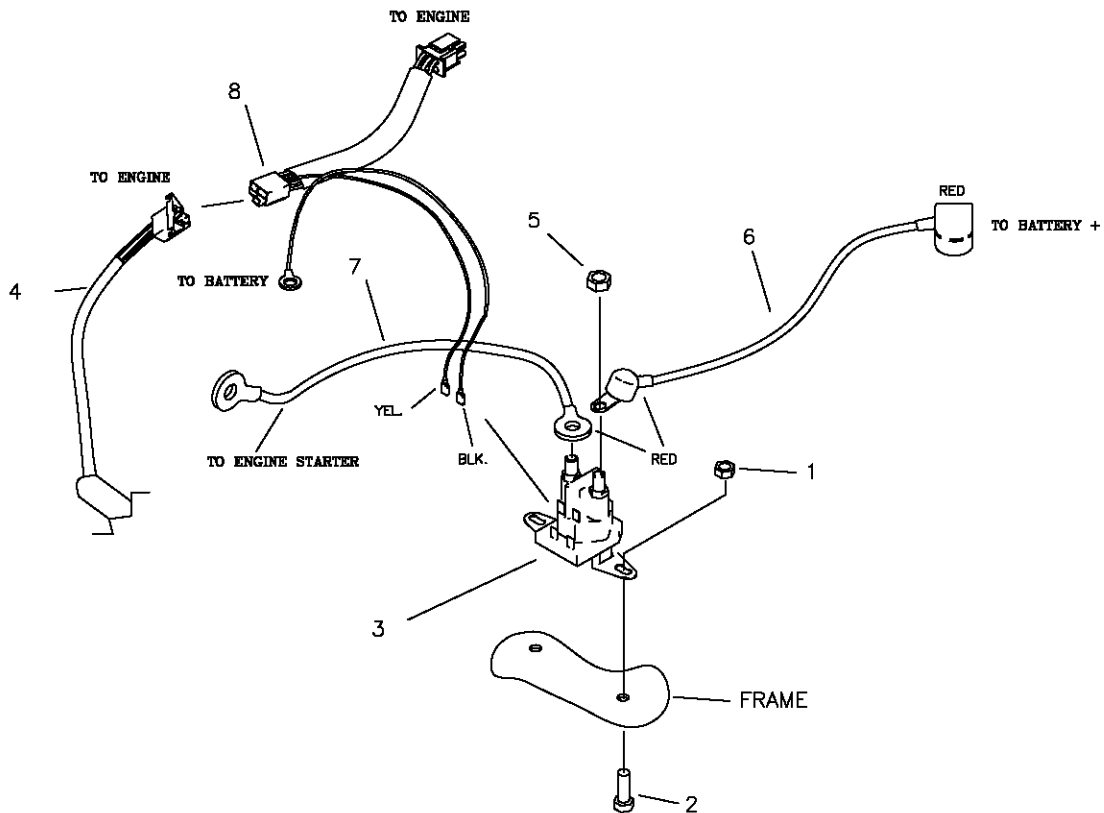
ITEM #	PART #	QTY	DESCRIPTION
1	E-5812	1	BATTERY (20HP KOHLER)
-	E-6271	1	BATTERY (24HP & 27HP KOHLER)
2	E-5878	1	HOUR METER
3	E-6054	1	SOLENOID
4	E-5873	1	START SWITCH
5	E-6403	1	CLUTCH SWITCH
6	E-6416	1	WIRE HARNESS
7	659-137P	1	BATTERY HOLD DOWN
8	E-6369	1	RETAINER CLIP
9	F-1858	1	1/4-20 U-NUT
10	F-1019-01	1	1/4" LOCK WASHER
11	E-6207	2	FUSE, #ATC-30
12	F-1538	3	1/4-20 x 3/4" CAPSCREW
13	F-1158	2	1/4-20 STOVER NUT
14	F-1009-01	3	1/4" FLAT WASHER
15	E-6417	1	KAWASAKI HARNESS ADAPTER
16	E-6418	1	CABLE, BATTERY TO SOLENOID
17	E-6419	1	CABLE, SOLENOID TO ENGINE
18	F-1011-01	2	1/4-20 NUT
19	F-1015-02	2	1/4-20 x 5/8" CAPSCREW
-NOT SHOWN-			
	E-6374	1	SEAT SWITCH
	E-6281	1	KEY SWITCH

E-6417 WIRE HARNESS ADAPTER & RELATED PARTS FOR & 22HP KAWASAKI



ITEM #	PART #	QTY	DESCRIPTION
1	F-1158	2	1/4-20 STOVER NUT
2	F-1015-02	2	1/4-20 x 5/8" CAPSCREW
3	E-6054	1	SOLENOID
4	E-6415	1	WIRE HARNESS (JOYSTICK)
-	E-6416	1	WIRE HARNESS (TWINSTICK)
5	F-1011-01	2	1/4-20 NUT
6	E-6418	1	CABLE, BATTERY TO SOLENOID
7	E-6419	1	CABLE, SOLENOID TO ENGINE
8	E-6417	1	KAWASAKI HARNESS ADAPTER

E-6436 WIRE HARNESS ADAPTER & RELATED PARTS FOR 22HP & 27HP COURAGE KOHLER (TWINSTICK)



ITEM #	PART #	QTY	DESCRIPTION
1	F-1158	2	1/4-20 STOVER NUT
2	F-1015-02	2	1/4-20 x 5/8" CAPSCREW
3	E-6054	1	SOLENOID
4	E-6416	1	WIRE HARNESS (TWINSTICK)
5	F-1011-01	2	1/4-20 NUT
6	E-6418	1	CABLE, BATTERY TO SOLENOID
7	E-6419	1	CABLE, SOLENOID TO ENGINE
8	E-6436	1	ENGINE ADAPTER