

REPAIR PARTS MANUAL

for

COUNTRY
CLIPPER®

JAZZEE™

SR215

JAZZEE™
PRO

SR365



COUNTRY CLIPPER
"JAZEE "
AND
"JAZEE PRO "
ZERO TURN RADIUS MOWER

TABLE OF CONTENTS

PAGE.... CONTENTS

SECTION 1 – MOWER DECKS AND RELATED PARTS

- 1-1. . . . 42" & 48" DECK ASSEMBLY
- 1-2 . . . 52" & 60" DECK ASSEMBLY
- 1-3 . . . DECK SPINDLE ASSEMBLY
- 1-4. . . . LIFT HANDLE ASSEMBLY & RELATED PARTS
- 1-5LIFT ASSEMBLY & RELATED PARTS
- 1-6. . . . TRANSMISSION IDLERS & RELATED PARTS

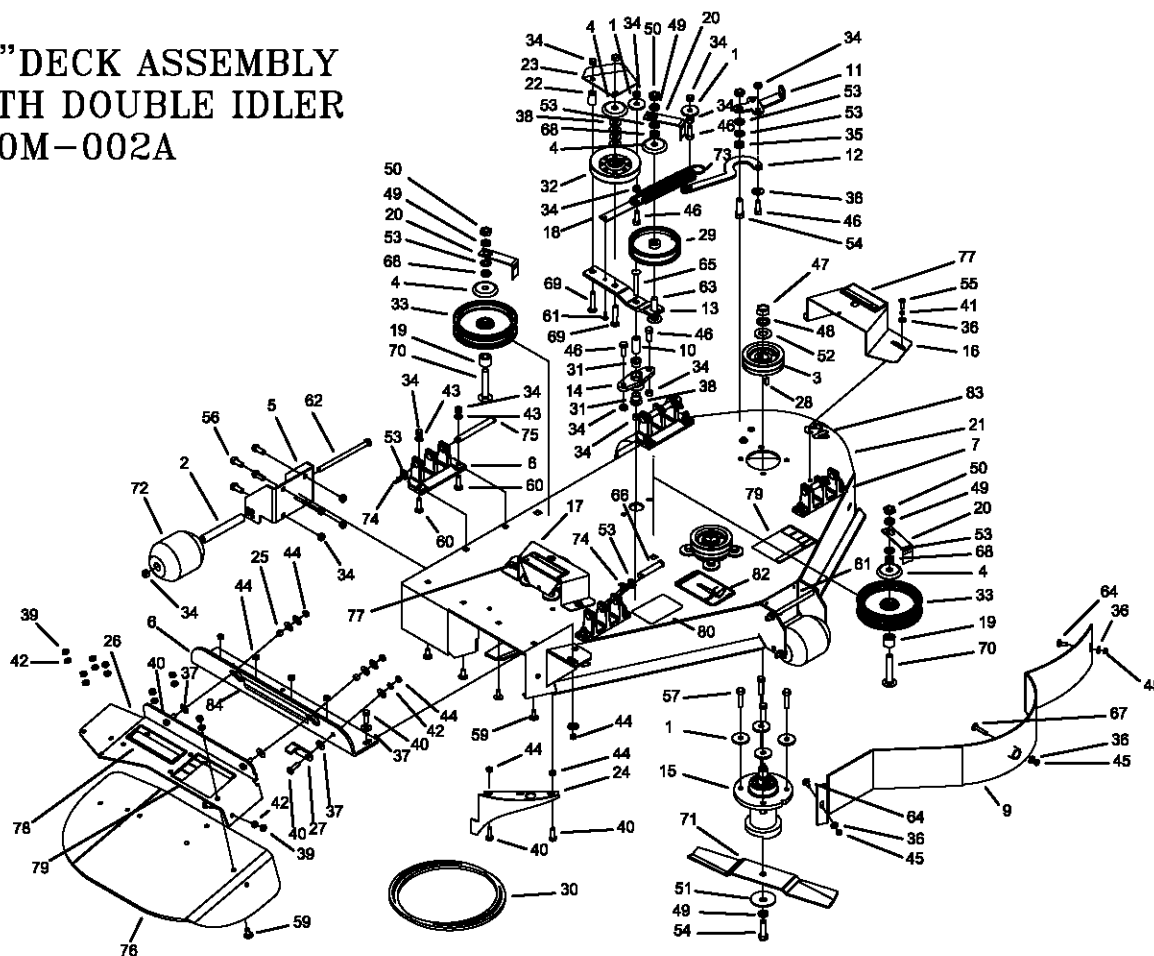
SECTION 2 –TRACTOR FRAME AND RELATED PARTS

- 2-7.CASTER WHEEL ASSEMBLY
- 2-8.FRAME SIDES & RELATED PARTS FOR JAZEE SR215
- 2-9.FRAME SIDES & RELATED PARTS FOR JAZEE PRO SR365
- 2-10. . . .FENDER ASSEMBLY
- 2-11. . . .SEAT, FOOT DECK & RELATED PARTS
- 2-12. . . .FRONT STEP & RELATED PARTS FOR JAZEE PRO SR365

SECTION 3 –TRACTOR DRIVE AND RELATED PARTS

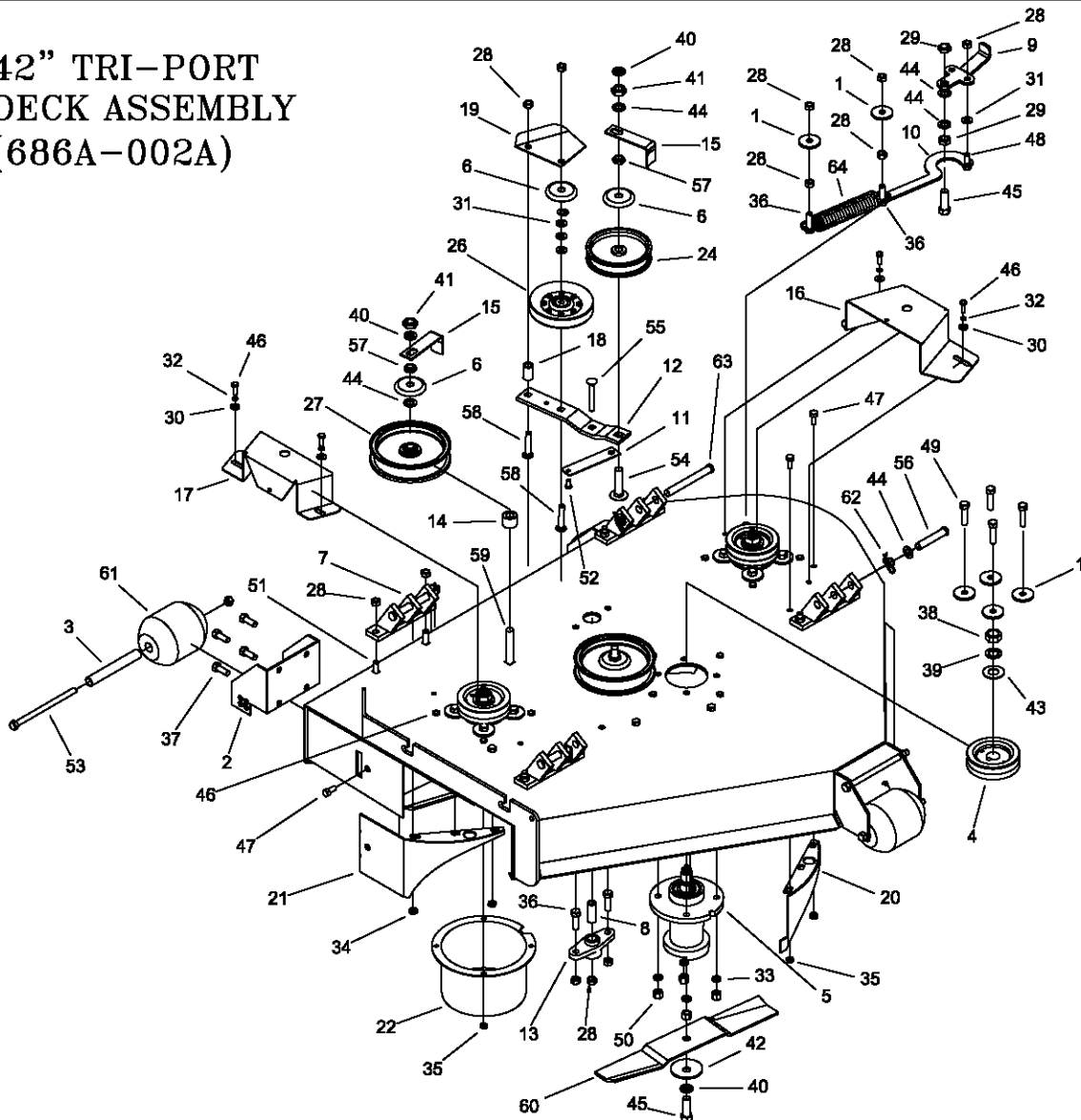
- 3-13. . . .FUEL TANK ASSEMBLY
- 3-14. . . .JOYSTICK STEERING CONTROL & RELATED PARTS
- 3-15. . . .JOYSTICK STEERING CONTROL & RELATED PARTS FOR JAZEE & JAZEE PRO
- 3-16. . . .LEFT HAND STEERING CONTROL AND RELATED PARTS
- 3-17. . . .RIGHT HAND STEERING CONTROL AND RELATED PARTS
- 3-18. . . .PARKING BRAKE ASSEMBLY & RELATED PARTS FOR JAZEE SR215
- 3-19. . . .PARKING BRAKE ASSEMBLY & RELATED PARTS FOR JAZEE PRO SR365
- 3-20. . . .MOTOR AND TRANSMISSION ASSEMBLY & RELATED PARTS FOR JAZEE SR215
- 3-21. . . .MOTOR AND TRANSMISSION ASSEMBLY & RELATED PARTS FOR JAZEE PRO SR365
- 3-22. . . .E-6405 WIRE HARNESS & RELATED PARTS (20 HP BRIGGS, 24HP & 27HP KOHLER)
- 3-23. . . .E-6415 WIRE HARNESS & RELATED PARTS (22HP KAWASAKI)
- 3-24. . . .E-6416 WIRE HARNESS & RELATED PARTS (22HP KAWASAKI)
- 3-25. . . .E-6417 KAWASAKI ADAPTER HARNESS & RELATED PARTS
- 3-26. . . .E-6436 ADAPTER HARNESS & RELATED PARTS (20HP BRIGGS, 24HP & 27HP KOHLER)

42" DECK ASSEMBLY
WITH DOUBLE IDLER
660M-002A



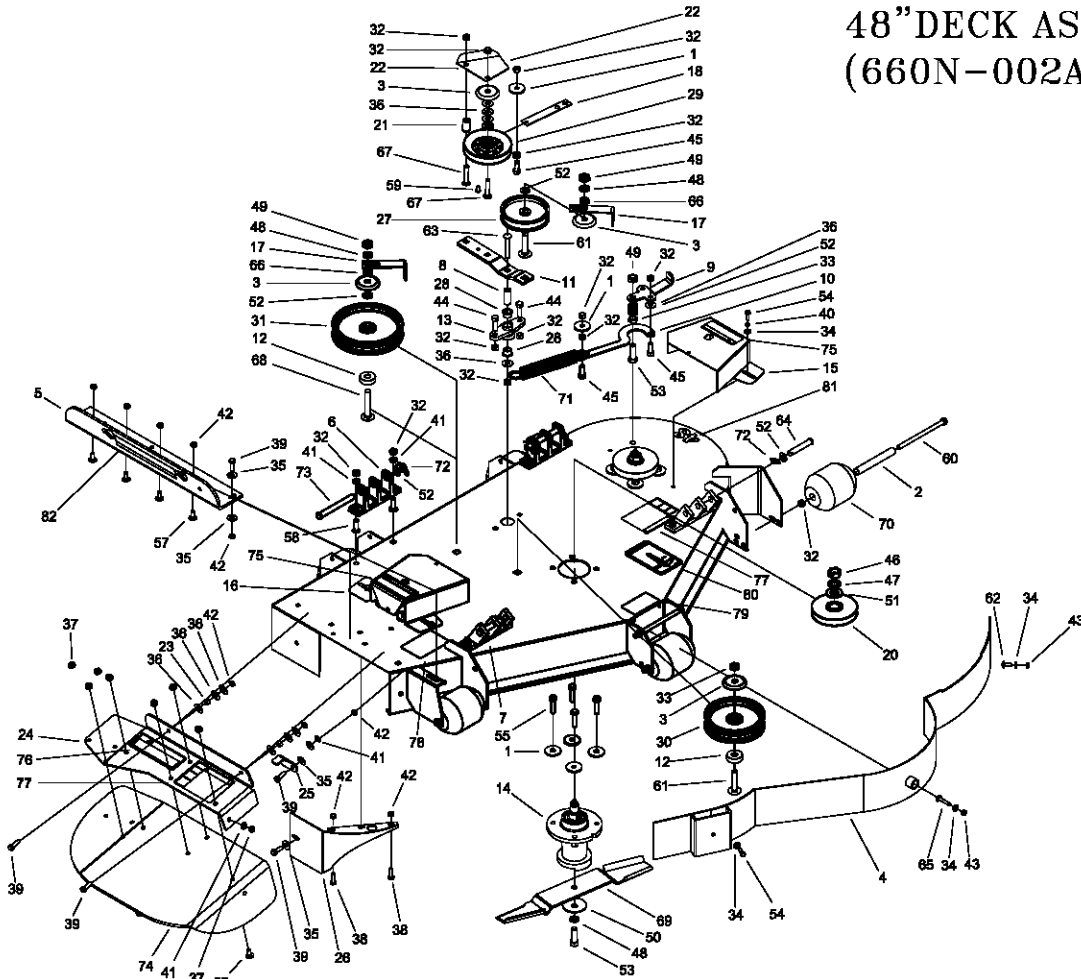
REF NO.	PART NO.	QTY.	DESCRIPTION	REF NO.	PART NO.	QTY.	DESCRIPTION
1	609-034P	14	SPINDLE SPACER WASHER	43	F-1019-03	20	3/8" LOCKWASHER
2	609-183P	3	BUSHING	44	F-1125	10	5/16-18 STOVER NUT
3	609-266P	3	PULLEY,DECK,3.75	45	F-1158	3	1/4-20 STOVER NUT
4	620-201P	4	WASHER, BEARING CAP	46	F-1394	5	3/8-16 x 1" CAPSCREW
5	637-006P	2	SCALPER BRACKET	47	F-1461	3	3/4-16 JAM NUT
6	637-072P	1	OUTLET STIFFENER	48	F-1463	3	3/4 LOCKWASHER
7	643-016W	2	HANGER WELDMENT	49	F-1464	6	1/2" LOCKWASHER
8	651-009W	2	CASTING,HANGER,WIDE BASE	50	F-1489	3	1/2-13 HEX NUT
9	651-022W	1	DUST BAFFLE	51	F-1507	3	CUPPED WASHER, 1/2"
10	659-085P	1	MOUNTING PIN	52	F-1510	3	3/4 FLAT WASHER
11	660-030P	1	BELT TIGHTNER HANDLE	53	F-1521	9	1/2" WASHER
12	660-031P	1	BELT TIGHTNER ARM	54	F-1526	4	1/2-13 x 1-1/2" CAPSCREW
13	660-036P	1	IDLER ARM	55	F-1538	4	1/4-20 x 3/4" CAPSCREW
14	660-039P	1	DOUBLE IDLER MOUNT	56	F-1558	8	3/8-16 x 7/8" CAPSCREW
15	660-045A	3	DECK SPINDLE ASSEMBLY	57	F-1572	12	3/8-24 x 1.5" CAPSCREW
16	660-047P	1	PULLEY COVER	58	F-1573	12	3/8-24 LOCKNUT
17	660-048p	1	PULLEY COVER	59	F-1671	12	5/16-18 x 3/4" CARRIAGE BOLT
18	660-081P	1	EXTENSION FOR SPRING	60	F-1672	8	3/8-16 x 1-1/4" CARRIAGE BOLT
19	660-083P	2	SPACER	61	F-1733	1	1/4" x 1/2" DRIVE SCREW
20	660-084P	3	BELT KEEPER, 'A' SECTION	62	F-1741	4	3/8-16 x 6" CAPSCREW
21	660M-003W	1	42" DECK WELDMENT	63	F-1822	1	1/2-13 x 2-1/4" CARRIAGE BOLT
22	668-021P	1	SPACER, BELT GUARD	64	F-1823	2	CARRIAGE BOLT, 1/4 x 3/4"
23	668-029P	1	BELT GUARD	65	F-1865	1	3/8-16 x 2-1/2" CARRIAGE BOLT
24	686-006W	1	SPLITTER BAFFLE	66	F-1889	2	1/2 x 2-5/8" CLEVIS PIN
25	686-036P	2	SPACER	67	F-1935	1	CARRIAGE BOLT, 1/4 x 1-1/2"
26	686-077P	1	CHUTE FRAME	68	F-1966	3	1/2-13 THIN NYLOC NUT
27	686-079P	1	LATCH	69	F-1976	2	3/8-16 x 1-1/2" CARRIAGE BOLT
28	D-1004-02	3	KEY, WOODRUFF, 1/4 X 3/4	70	F-2047	2	1/2-13 X 3" CARRIAGE BOLT
29	D-3338	1	PULLEY FLAT IDLER 1/2" BORE 4"	71	H-1715	3	BLADE, 15" HIGH LIFT
30	D-3727-W	1	BELT, B-144	72	H-1948	3	Roller, 3-3/4 DIA. x 4-13/16L
31	D-3730	2	FLANGED BUSHING 5/8" BORE	73	H-2092	1	1-1/4" x 5" EXTENTION SPRING
32	D-3758	1	PULLEY V-IDLER 4.48 O.D. 3/8 HOLE	74	H-2239	4	1/2" RUE RING
33	D-3774	2	IDLER PULLEY 5" X 2"	75	H-2240	2	1/2" x 4-1/2" CLEVIS PIN
34	F-1005-03	30	3/8-16 STOVER NUT	76	H-2599	1	RUBBER CHUTE
35	F-1005-05	2	1/2-13 STOVER NUT	77	P-10935	2	Decal, WARNING
36	F-1009-01	7	1/4" FLAT WASHER	78	P-10937	1	DECAL "WARNING TO AVOID SERIOUS"
37	F-1009-02	10	5/16" FLAT WASHER	79	P-10941	2	DECAL "DANGER ROTATING BLADES"
38	F-1009-03	6	3/8" FLAT WASHER	80	P-10947	1	DECAL " GREASE DECK SPINDLES"
39	F-1011-02	8	5/16-18 NUT	81	P-11413	1	DECAL, HOIST POINT
40	F-1015-15	6	5/16-18 x 1" CAPSCREW	82	P-11932	1	DECAL, JAZEE DECK BELT ROUTING
41	F-1019-01	4	1/4" LOCK WASHER	83	P-11949	1	DECAL, DECK SIZE, 42
42	F-1019-02	9	5/16" LOCK WASHER	84	P-12496	1	DECAL, MISSING CHUTE

42" TRI-PORT DECK ASSEMBLY (686A-002A)



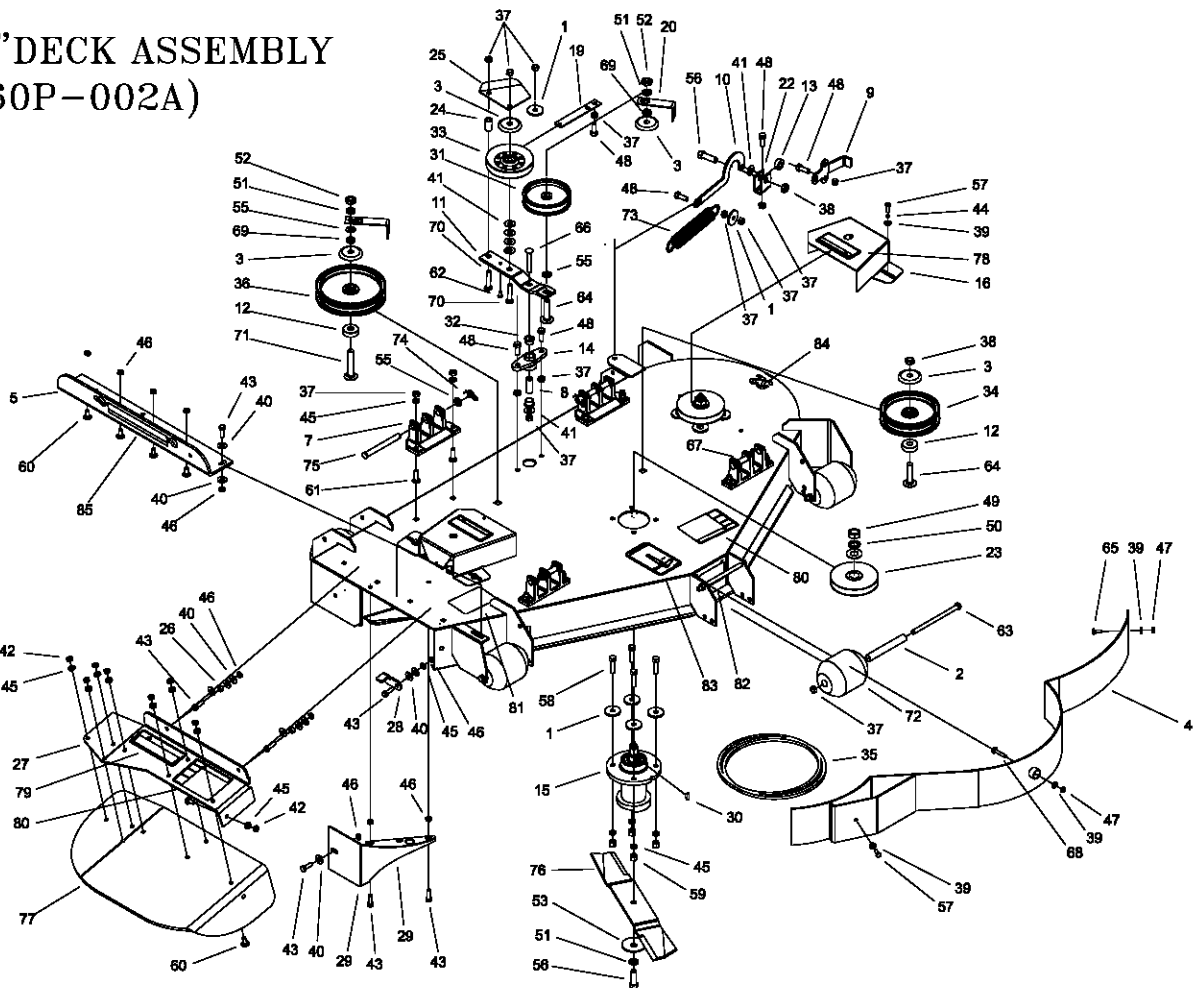
REF NO.	PART NO.	QTY.	DESCRIPTION	REF NO.	PART NO.	QTY.	DESCRIPTION
1	606-034P	14	SPINDLE SPACER WASHER	33	F-1019-03	12	3/8" LOCK WASHER
2	609-182P	2	REAR CENTER BRACKET	34	F-1125	6	5/16-18 STOVER NUT
3	609-183P	3	BUSHING	35	F-1158	13	1/4-20 STOVER NUT
4	609-266P	3	DECK PULLEY, 3.75	36	F-1307	4	3/8-16 x 1-1/4" CAPSCREW
5	609F-019A	3	DECK SPINDLE ASSEMBLY	37	F-1394	8	3/8-16 x 1" CAPSCREW
6	620-201P	4	WASHER, BEARING CAP	38	F-1461	3	3/4-16 JAM NUT
7	651-009W	4	DECK MOUNT WELDMENT	39	F-1463	3	3/4" LOCK WASHER
8	659-085P	1	MOUNTING PIN	40	F-1464	5	1/2" LOCK WASHER
9	660-030P	1	BELT TIGHTENER HANDLE	41	F-1489	2	1/2-13 HEX NUT
10	660-031P	1	BELT TIGHTENER ARM	42	F-1507	3	1/2" CUPPED WASHER
11	660-035P	1	EXTENSION FOR SPRING	43	F-1510	3	3/4" FLAT WASHER
12	660-036P	1	IDLER ARM	44	F-1521	8	1/2" WASHER
13	660-039P	1	DOUBLE IDLER MOUNT	45	F-1526	4	1/2-13 x 1-1/2" CAPSCREW
14	660-083P	2	SPACER	46	F-1538	16	1/4-20 x 3/4" CAPSCREW
15	660-084P	2	BELT KEEPER	47	F-1546	7	5/16-18 x 3/4" CAPSCREW
16	660-047P	1	PULLEY COVER	48	F-1558	1	3/8-16 x 7/8" CAPSCREW
17	660-048P	1	PULLEY COVER	49	F-1572	12	3/8-24 x 1-1/2" CAPSCREW
18	668-021P	1	BELT GUARD COVER	50	F-1573	12	3/8-24 LOCK NUT
19	668-029P	1	BELT GUARD	51	F-1672	8	3/8-16 x 1-1/4" CARRIAGE BOLT
20	686-006W	2	SPLITTER WELDMENT	52	F-1733	1	1/4" x 1/2" DRIVE SCREW
21	686-018W	1	DISCHARGE BAFFLE WELDMENT	53	F-1741	4	3/8-16 x 6" CAPSCREW
22	686-050W	3	6" TUBE WELDMENT	54	F-1822	1	1/2-13 x 2-1/4" CARRIAGE BOLT
23	686A-003W	1	42" DECK SHELL WELDMENT	55	F-1865	1	3/8-16 x 2-1/2" CARRIAGE BOLT
24	D-3338	1	FLAT PULLEY IDLER	56	F-1889	2	1/2" x 2-5/8" CLEAVIS PIN
25	D-3730	2	FLANGED BUSHING 5/8" BORE	57	F-1966	3	1/2-13 THIN NYLOC NUT
26	D-3758	1	"V"-IDLER PULLEY	58	F-1976	2	3/8-16 x 1-1/2" CARRIAGE BOLT
27	D-3774	2	IDLER PULLEY	59	F-2047	2	1/2-13 x 3" CARRIAGE BOLT
28	F-1005-03	30	3/8-16 STOVER NUT	60	H-1715	3	15" HIGH LIFT BLADE
29	F-1005-05	2	1/2-13 STOVER NUT	61	H-1948	3	3-3/4" x 4-13/16" ROLLER
30	F-1009-01	4	1/4" FLAT WASHER	62	H-2239	4	1/2" RUE RING
31	F-1009-03	6	3/8" FLAT WASHER	63	H-2240	2	1/2" x 4-1/2" CLEAVIS PIN
32	F-1019-01	4	1/4" LOCK WASHER	64	H-2092	1	1-1/4" x 5" EXTENTION SPRING

48" DECK ASSEMBLY (660N-002A)



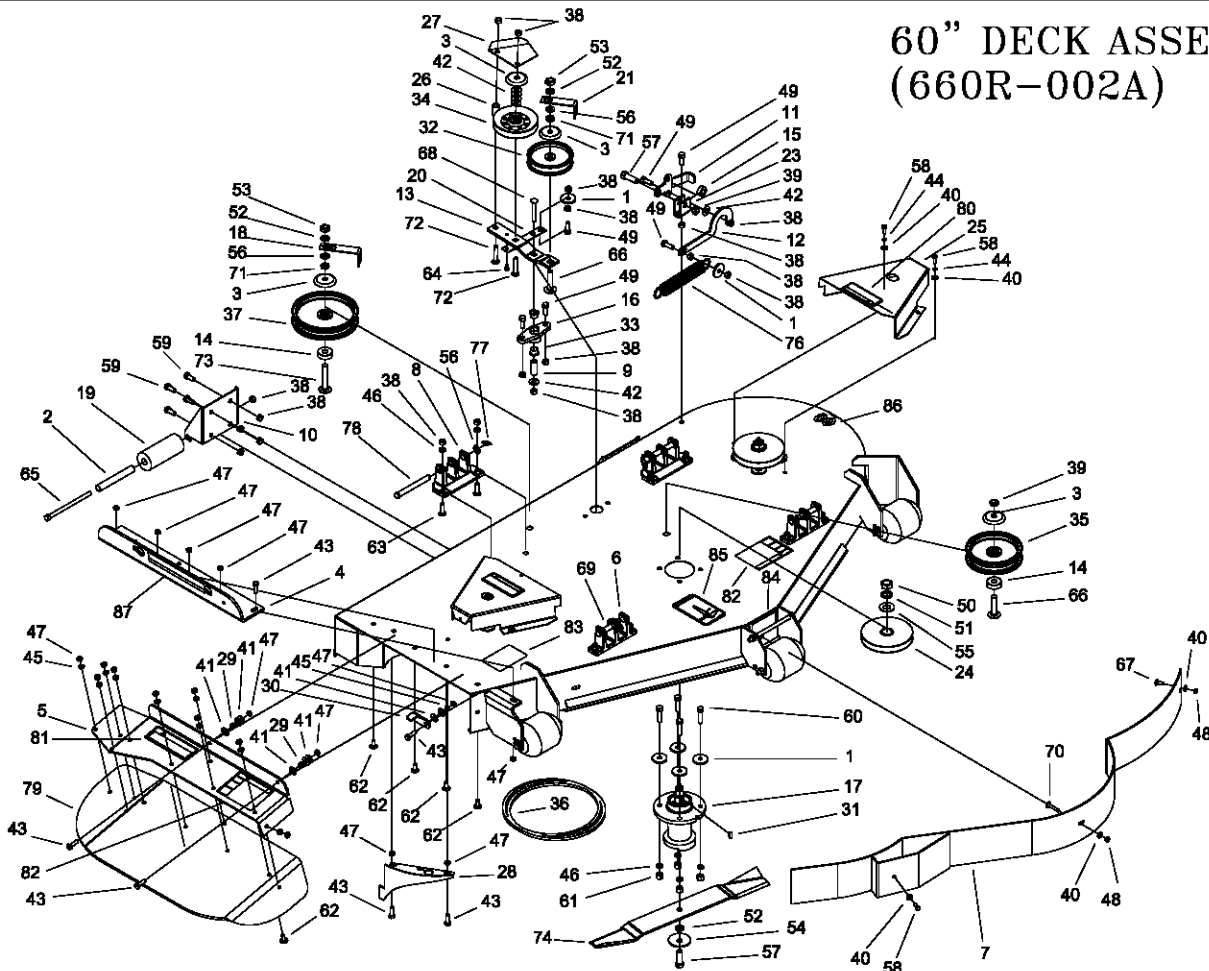
REF NO.	PART NO.	QTY.	DESCRIPTION	REF NO.	PART NO.	QTY.	DESCRIPTION
1	609-034P	14	SPINDLE SPACER WASHER	42	F-1125	11	5/16-18 STOVER NUT
2	609-183P	5	BUSHING	43	F-1158	2	1/4-20 STOVER NUT
3	620-201P	4	WASHER, BEARING CAP	44	F-1307	2	3/8-16 x 1-1/4" CAPSCREW
4	629-241W	1	BAFFLE WELDMENT 48"	45	F-1394	3	3/8-16 x 1" CAPSCREW
5	637-072P	1	OUTLET STIFFENER	46	F-1461	3	3/4-16 JAM NUT
6	643-018W	2	HANGER WELDMENT	47	F-1463	3	3/4 LOCKWASHER
7	651-009W	2	DECK MOUNT WELDMENT	48	F-1464	5	1/2" LOCKWASHER
8	659-085P	1	MOUNTING PIN	49	F-1489	3	1/2-13 HEX NUT
9	660-030P	1	BELT TIGHTNER HANDLE	50	F-1507	3	CUPPED WASHER, 1/2"
10	660-031P	1	BELT TIGHTNER ARM	51	F-1510	3	3/4 FLAT WASHER
11	660-036P	1	IDLER ARM	52	F-1521	9	1/2" WASHER
12	660-037P	2	3/8" SPACER	53	F-1526	4	1/2-13 x 1-1/2" CAPSCREW
13	660-039P	1	DOUBLE IDLER MOUNT	54	F-1538	5	1/4-20 x 3/4" CAPSCREW
14	660-045A	3	DECK SPINDLE ASSEMBLY	55	F-1572	12	3/8-24 x 1.5" CAPSCREW
15	660-049P	1	PULLEY COVER	56	F-1573	12	3/8-24 LOCKNUT
16	660-050P	1	PULLEY COVER, RH	57	F-1671	12	5/16-18 x 3/4" CARRIAGE BOLT
17	660-060P	2	BELT KEEPER	58	F-1672	8	3/8-16 x 1-1/4" CARRIAGE BOLT
18	660-081P	1	EXTENSION FOR SPRING	59	F-1733	1	1/4" x 1/2" DRIVE SCREW
19	660N-003W	1	48" DECK WELDMENT	60	F-1741	6	3/8-16 x 6" CAPSCREW
20	668-014P	3	48" PULLEY	61	F-1822	2	1/2-13 X 2-1/4" CARRIAGE BOLT
21	668-021P	1	SPACER, BELT GUARD	62	F-1823	1	CARRIAGE BOLT 1/4 X 3/4"
22	668-029P	1	BELT GUARD	63	F-1865	1	3/8-16 x 2-1/2" CARRIAGE BOLT
23	686-036P	2	SPACER	64	F-1898	2	1/2 x 2-3/4" CLEVIS PIN
24	686-077P	1	CHUTE FRAME	65	F-1935	1	CARRIAGE BOLT, 1/4 X 1-1/2"
25	686-079P	1	LATCH	66	F-1966	2	1/2-13 THIN NYLOC NUT
26	686-080W	1	SPLITTER BAFFLE	67	F-1976	2	3/8-16 x 1-1/2" CARRIAGE BOLT
27	D-3338	1	PULLEY FLAT IDLER 1/2" BORE 4"	68	F-2047	1	1/2-13 X 3" CARRIAGE BOLT
28	D-3730	2	FLANGED BUSHING 5/8" BORE	69	H-1714	3	BLADE, 17" HIGH LIFT
29	D-3758	1	PULLEY V-IDLER 4.48 O.D. 3/8 HOLE	70	H-1948	5	ROLLER 3-3/4 DIA. x 4-13/16L
30	D-3774	1	IDLER PULLEY 5" X 2"	71	H-2092	1	1-1/4" x 5" EXTENTION SPRING
31	D-3815	1	IDLER PULLEY 5" X 2"	72	H-2239	4	1/2" RUE RING
32	F-1005-03	24	3/8-16 STOVER NUT	73	H-2240	2	1/2" x 4-1/2" CLEVIS PIN
33	F-1005-05	2	1/2-13 STOVER NUT	74	H-2599	1	RUBBER CHUTE
34	F-1009-01	7	1/4" FLAT WASHER	75	P-10935	2	Decal, WARNING
35	F-1009-02	5	5/16" FLAT WASHER	76	P-10937	1	DECAL "WARNING TO AVOID SERIOUS"
36	F-1009-03	12	3/8" FLAT WASHER	77	P-10941	2	DECAL "DANGER ROTATING BLADES"
37	F-1011-02	8	5/16-18 NUT	78	P-10947	1	DECAL " GREASE DECK SPINDLES"
38	F-1015-05	2	1/4-20 x 1" CAPSCREW	79	P-11413	1	DECAL, HOIST POINT
39	F-1015-15	5	5/16-18 x 1" CAPSCREW	80	P-11932	1	DECAL, JAZEE DECK BELT ROUTING
40	F-1019-01	4	1/4" LOCKWASHER	81	P-11950	1	DECAL, DECK SIZE, 48
41	F-1019-03	29	3/8" LOCKWASHER	82	P-12496	1	DECAL, MISSING CHUTE

52" DECK ASSEMBLY (660P-002A)



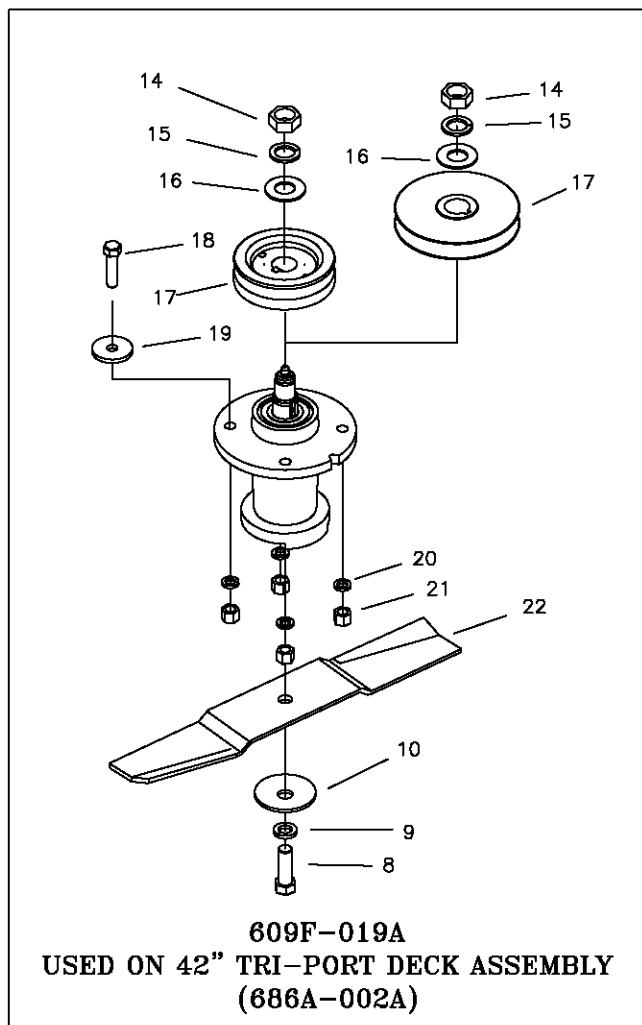
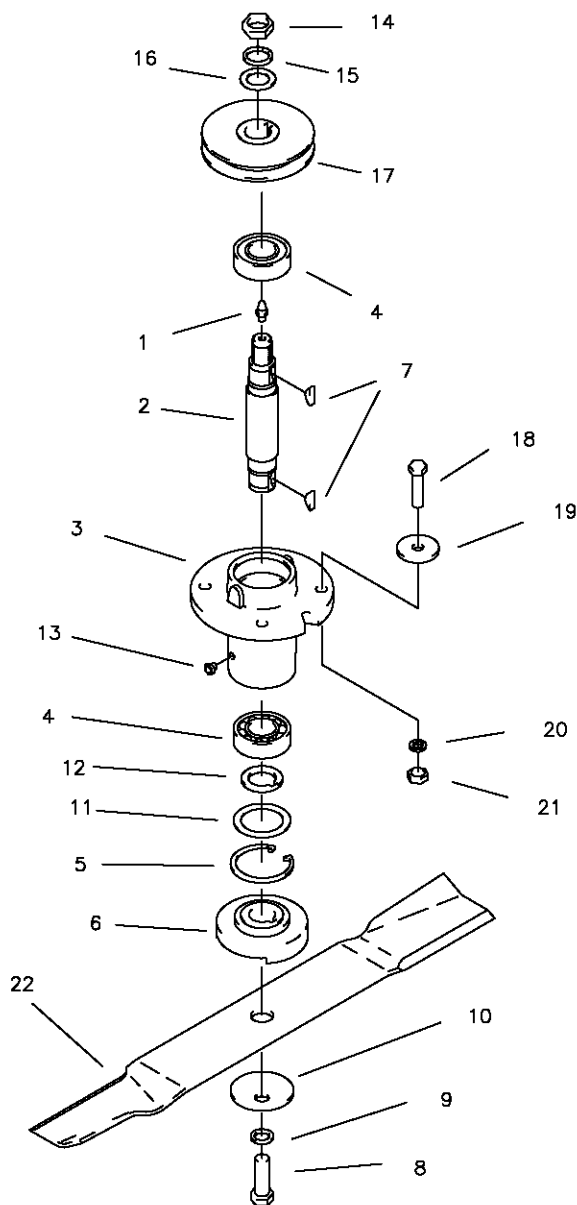
REF NO.	PART NO.	QTY.	DESCRIPTION	REF NO.	PART NO.	QTY.	DESCRIPTION
1	609-034P	14	SPINDLE SPACE WASHER	44	F-1019-01	4	1/4" LOCKWASHER
2	609-183P	5	BUSHING	45	F-1019-03	29	3/8" LOCKWASHER
3	620-201P	4	WASHER, BEARING CAP	46	F-1125	11	5/16-18 STOVER NUT
4	629-229W	1	52" DUST BAFFLE	47	F-1158	2	1/4-20 STOVER NUT
5	637-072P	1	OUTLET STIFFENER	48	F-1394	6	3/8-16 x 1" CAPSCREW
6	643-016W	2	HANGER WELDMENT	49	F-1461	3	3/4-16 JAM NUT
7	651-009W	2	CASTING,HANGER,WIDE BASE	50	F-1463	3	3/4 LOCKWASHER
8	659-085P	1	MOUNTING PIN	51	F-1464	5	1/2" LOCKWASHER
9	660-030P	1	BELT TIGHTNER HANDLE	52	F-1489	2	1/2-13 HEX NUT
10	660-031P	1	BELT TIGHTNER ARM	53	F-1507	3	CUPPED WASHER, 1/2"
11	660-036P	1	IDLER ARM	54	F-1510	3	3/4 FLAT WASHER
12	660-037P	2	3/8" SPACER	55	F-1521	6	1/2" WASHER
13	660-038P	1	3/8" SPACER	56	F-1526	4	1/2-13 x1-1/2" CAPSCREW
14	660-039P	1	DOUBLE IDLER MOUNT	57	F-1538	5	1/4-20 x 3/4" CAPSCREW
15	660-045A	3	DECK SPINDLE ASSEMBLY	58	F-1572	12	3/8-24 x 1.5" CAPSCREW
16	660-049P	1	PULLEY COVER	59	F-1573	12	3/8-24 LOCKNUT
17	660-050P	1	PULLEY COVER, RH	60	F-1671	12	5/16-18 x 3/4" CARRIAGE BOLT
18	660-060P	1	BELT KEEPER	61	F-1672	8	3/8-16 x 1-1/4" CARRIAGE BOLT
19	660-081P	1	EXTENSION FOR SPRING	62	F-1733	1	1/4" x 1/2" DRIVE SCREW
20	660-084P	1	BELT KEEPER, 'A' SECTION	63	F-1741	6	3/8-16 x 6" CAPSCREW
21	660P-003W	1	52" DECK WELDMENT	64	F-1822	2	1/2-13 X 2-1/4" CARRIAGE BOLT
22	661-015P	1	SHACKLE	65	F-1823	1	CARRIAGE BOLT 1/4 X 3/4"
23	668-013P	3	PULLEY, 52"	66	F-1855	1	3/8-16 x 2-1/2" CARRIAGE BOLT
24	668-021P	1	SPACER, BELT GUARD	67	F-1889	2	1/2 x 2-5/8" CLEVIS PIN
25	668-029P	1	BELT GUARD	68	F-1935	1	CARRIAGE BOLT, 1/4 X 1-1/2"
26	686-036P	2	SPACER	69	F-1966	2	1/2-13 THIN NYLOC NUT
27	686-077P	1	CHUTE FRAME	70	F-1976	2	3/8-16 x 1-1/2" CARRIAGE BOLT
28	686-079P	1	LATCH	71	F-2047	1	1/2-13 X 3" CARRIAGE BOLT
29	686-080W	1	SPLITTER BAFFLE	72	H-1948	5	ROLLER 3-3/4 DIA. x 4-13/16L
30	D-1004-02	3	KEY, WOODRUFF, 1/4 X 3/4	73	H-2092	1	1-1/4" x 5" EXTENTION SPRING
31	D-3338	1	PULLEY FLAT IDLER 1/2" BORE 4"	74	H-2239	4	1/2" RUE RING
32	D-3730	2	FLANGED BUSHING 5/8" BORE	75	H-2240	2	1/2" x 4-1/2" CLEVIS PIN
33	D-3758	1	PULLEY V-IDLER 4.48 O.D. 3/8 HOLE	76	H-2246	3	18-3/8 HIGH LIFT BLADE
34	D-3774	1	IDLER PULLEY 5" X 2"	77	H-2599	1	RUBBER CHUTE
35	D-3776	1	BELT, B-180	78	P-10935	2	Decal, WARNING
36	D-3815	1	IDLER PULLEY 5" X 2"	79	P-10937	1	DECAL "WARNING TO AVOID SERIOUS"
37	F-1005-03	25	3/8-16 STOVER NUT	80	P-10941	2	DECAL "DANGER ROTATING BLADES"
38	F-1005-05	2	1/2-13 STOVER NUT	81	P-10947	1	DECAL " GREASE DECK SPINDLES"
39	F-1009-01	7	1/4" FLAT WASHER	82	P-11413	1	DECAL, HOIST POINT
40	F-1009-02	11	5/16" FLAT WASHER	83	P-11932	1	DECAL, JAZEE DECK BELT ROUTING
41	F-1009-03	6	3/8" FLAT WASHER	84	P-11951	1	DECAL, DECK SIZE, 52
42	F-1011-02	8	5/16-18 NUT	85	P-12496	1	DECAL, MISSING CHUTE
43	F-1015-15	7	5/16-18 x 1" CAPSCREW				

60" DECK ASSEMBLY (660R-002A)



REF NO.	PART NO.	QTY.	DESCRIPTION	REF NO.	PART NO.	QTY.	DESCRIPTION
1	609-034P	14	Spindle Spacer Washer	45	F-1019-02	10	5/16" LockWasher
2	609-183P	5	BUSHING	46	F-1019-03	20	3/8" LOCKWASHER
3	620-201P	4	WASHER, BEARING CAP	47	F-1125	19	5/16-18 Stover Nut
4	637-072P	1	OUTLET STIFFENER	48	F-1158	2	1/4-20 Stover Nut
5	637-073P	1	CHUTE FRAME	49	F-1394	6	3/8-16 x 1" Capscrew
6	643-016W	2	Hanger Weldment	50	F-1461	3	3/4-16 JAM NUT
7	643-047W	1	DUST BAFFLE	51	F-1463	3	3/4 LOCKWASHER
8	651-009W	2	CASTING,HANGER,WIDE BASE	52	F-1464	5	1/2" LOCKWASHER
9	659-085P	1	Mounting Pin	53	F-1489	2	1/2-13 Hex Nut
10	659-139P	2	SCALPER BRACKET	54	F-1507	3	CUPPED WASHER, 1/2"
11	660-030P	1	Belt Tightner Handle	55	F-1510	3	3/4 FLAT WASHER
12	660-031P	1	Belt Tightner Arm	56	F-1521	6	1/2" Washer
13	660-036P	1	Idler Arm	57	F-1526	4	1/2-13 x1-1/2" Capscrew
14	660-037P	2	3/8" Spacer	58	F-1538	5	1/4-20 x 3/4" Capscrew
15	660-038P	1	3/8" Spacer	59	F-1558	8	3/8-16 x 7/8" Capscrew
16	660-039P	1	Double Idler Mount	60	F-1572	12	3/8-24 x 1.5" Capscrew
17	660-045A	3	DECK SPINDLE ASSEMBLY	61	F-1573	12	3/8-24 LOCKNUT
18	660-060P	1	BELT KEEPER	62	F-1671	13	5/16-18 x 3/4" CARRIAGE BOLT
19	660-076P	2	ROLLER	63	F-1672	8	3/8-16 x 1-1/4" Carriage Bolt
20	660-081P	1	EXTENSION FOR SPRING	64	F-1733	1	1/4" x 1/2" DRIVE SCREW
21	660-084P	1	BELT KEEPER, 'A' SECTION	65	F-1741	6	3/8-16 x 6" Capscrew
22	660R-003W	1	60" LITE DECK WELDMENT	66	F-1822	2	1/2-13 X 2-1/4" CARRIAGE BOLT
23	661-015P	1	SHACKLE	67	F-1823	1	Carriage Bolt, 1/4 X 3/4"
24	668-012P	3	PULLEY,60"	68	F-1865	1	3/8-16 x 2-1/2" Carriage Bolt
25	668-016P	2	PULLEY COVER	69	F-1889	2	1/2 x 2-5/8" Clevis Pin
26	668-021P	1	SPACER, BELT GUARD	70	F-1935	1	CARRIAGE BOLT, 1/4 X 1-1/2"
27	668-029P	1	BELT GUARD	71	F-1966	2	1/2-13 THIN NYLOC NUT
28	686-006W	2	SPLITTER BAFFLE	72	F-1976	2	3/8-16 x 1-1/2" Carriage Bolt
29	686-036P	2	SPACER	73	F-2047	1	1/2-13 X 3" CARRIAGE BOLT
30	686-079P	1	LATCH	74	H-1708	3	60" HIGH LIFT BLADE
31	D-1004-02	3	KEY, WOODRUFF, 1/4 X 3/4	75	H-1948	3	Roller, 3-3/4 DIA. x 4-13/16L
32	D-3338	1	Pulley flat idler 1/2" Bore 4"	76	H-2092	1	1-1/4" x 5" Extension Spring
33	D-3730	2	Flanged Bushing 5/8" Bore	77	H-2239	4	1/2" Rue Ring
34	D-3758	1	PULLEY V-IDLER 4.48 O.D. 3/8 HOLE	78	H-2240	2	1/2" x 4-1/2" Cleavis Pin
35	D-3774	1	IDLER PULLEY 5" X 2"	79	H-2613	1	RUBBER CHUTE
36	D-3776	1	BELT, B-180	80	P-10935	2	Decal, WARNING
37	D-3815	1	IDLER PULLEY 5" X 2"	81	P-10937	1	DECAL "WARNING TO AVOID SERIOUS"
38	F-1005-03	33	3/8-16 Stover Nut	82	P-10941	2	DECAL "DANGER ROTATING BLADES"
39	F-1005-05	2	1/2-13 Stover Nut	83	P-10947	1	DECAL "GREASE DECK SPINDLES"
40	F-1009-01	7	1/4" Flat Washer	84	P-11413	1	DECAL, HOIST POINT
41	F-1009-02	8	5/16" Flat Washer	85	P-11932	1	DECAL, JAZEE DECK BELT ROUTING
42	F-1009-03	6	3/8" Flat Washer	86	P-11952	1	DECAL, DECK SIZE, 52
43	F-1015-15	6	5/16-18 x 1" Capscrew	87	P-12496	1	DECAL, MISSING CHUTE
44	F-1019-01	4	1/4" LockWasher				

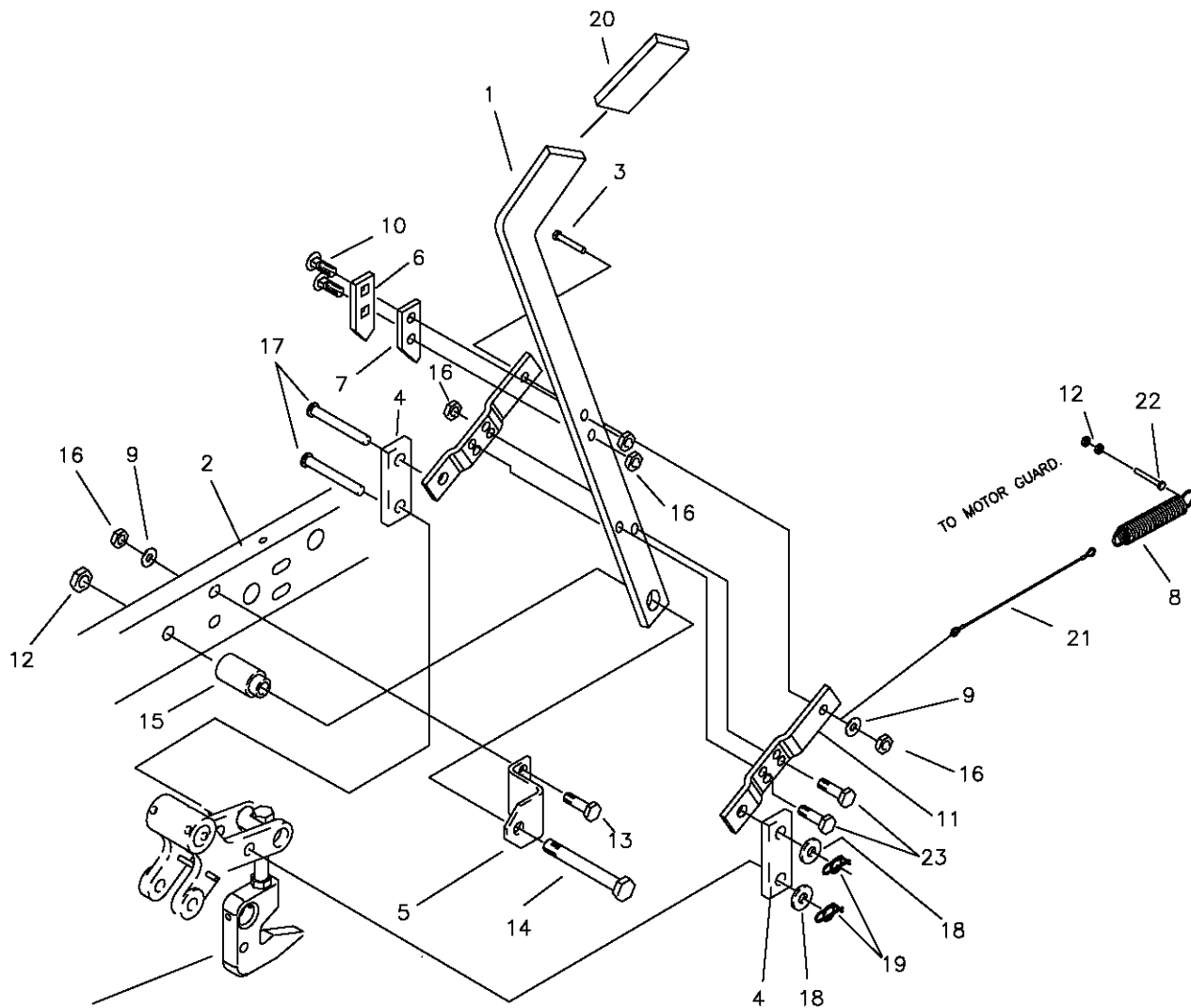
DECK SPINDLE ASSEMBLY



609F-019A
USED ON 42" TRI-PORT DECK ASSEMBLY
(686A-002A)

REF NO.	PART NO.	QTY.	DESCRIPTION	REF NO.	PART NO.	QTY.	DESCRIPTION
-	660-045A	-	SPINDLE ASSEMBLY	18	F-1572	4	3/8-24 X 1-1/2" HHCS GR. 5
1	H-1056	1	GREASE FITTING	19	609-034P	4	SPINDLE SPACER REINFORCEMENT
2	609-162P	1	SPINDLE SHAFT	20	F-1019-03	4	3/8" LOCK WASHER
3	660-028P	1	SPINDLE HOUSING, FLAT	21	F-1573	4	3/8-24 LOCKNUT, M-F
4	D-3058	2	BEARING, #6205-2RS	22	H-1714	1	BLADE, HIGH L, 17" CUT 48"
5	H-1893	1	SNAP RING INT. 52MM	-	H-1715	-	BLADE, HIGH L, 15" CUT 42"
6	609-152P	1	BLADE SPACER	-	H-2246	-	BLADE, HIGH L, 18 3/8" CUT 52"
7	D-1004-02	2	KEY, WOODRUF, 1/4 X 3/4	-	H-1708	-	BLADE, HIGH L, 21" CUT 60"
8	F-1526	1	1/2-13 X 1-1/2" HHCS GR. 5	OPTIONAL BLADES			
9	F-1464	1	1/2" LOCK WASHER	-	H-1666	-	BLADE, LOW L, 17" CUT 48"
10	F-1507	1	WASHER, 1/2" CUPPED	-	H-1665	-	BLADE, LOW L, 15" CUT 42"
11	609-151P	1	WASHER, SEAL	-	H-2387	-	BLADE, LOW L, 18 3/8" CUT, 52"
12	609-073P	1	ARBOR SPACER	-	H-1667	-	BLADE, LOW L, 21" CUT, 60"
13	H-2066	1	GREASE VENT 5 LBS.	-	H-2013	-	BLADE, GATOR, 15" CUT 42"
14	F-1461	1	3/4-16 NUT, HEX JAM	-	H-2202	-	BLADE, GATOR, 17" CUT 48"
15	F-1463	1	3/4" LOCK WASHER	-	H-2251	-	BLADE, GATOR, 18 3/8" CUT 52"
16	F-1510	1	3/4" WASHER, FLAT STD.	-	H-2122	-	BLADE, GATOR, 21" CUT 60"
17	609-266P	1	SPINDLE PULLEY, 42"				
-	668-014P	1	SPINDLE PULLEY, 48"				
-	668-013P	1	SPINDLE PULLEY, 52"				
-	668-012P	1	SPINDLE PULLEY, 60"				

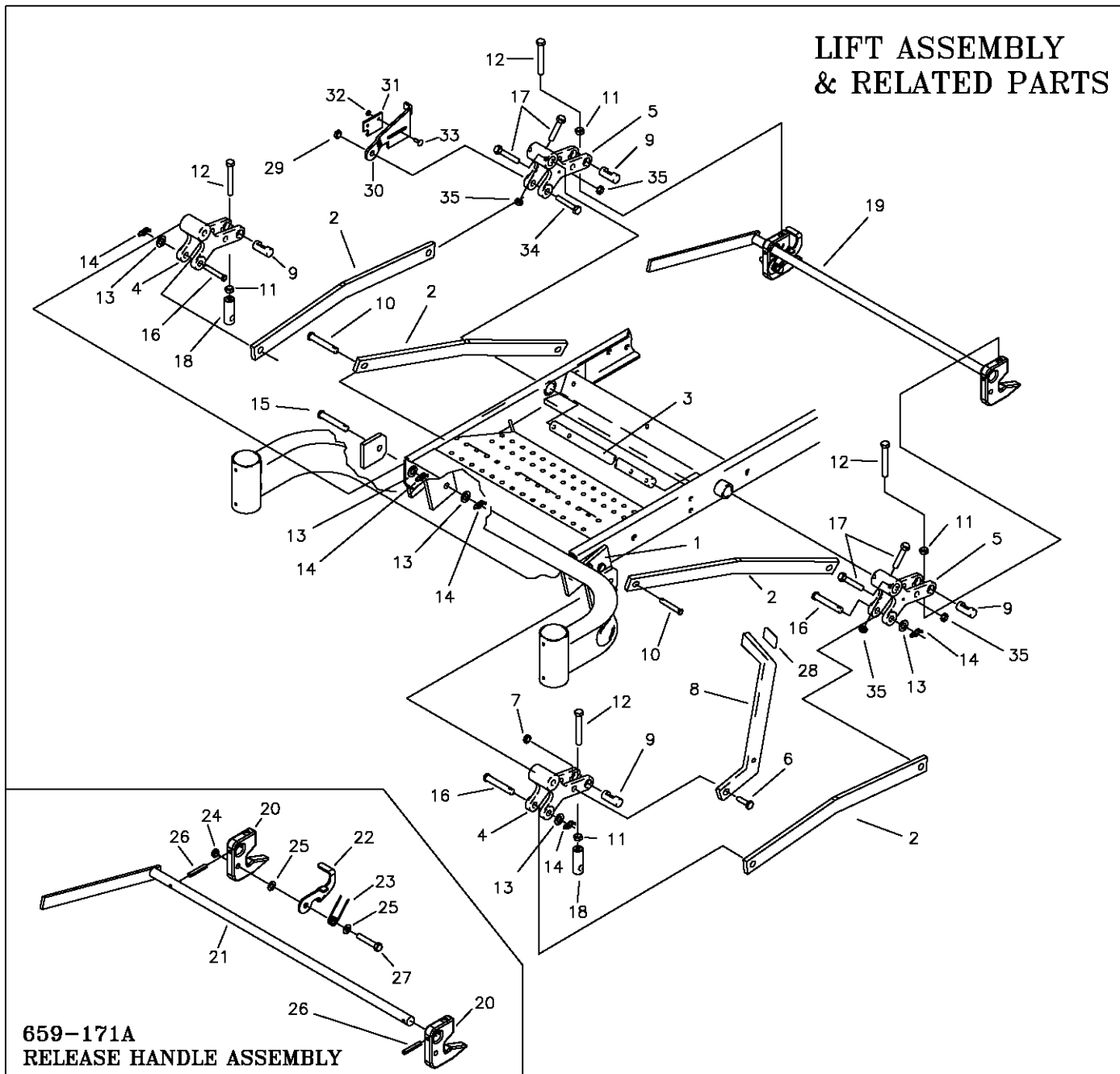
LIFT HANDLE ASSEMBLY & RELATED PARTS



SEE ASSEMBLY NUMBER
PAGE 1-5

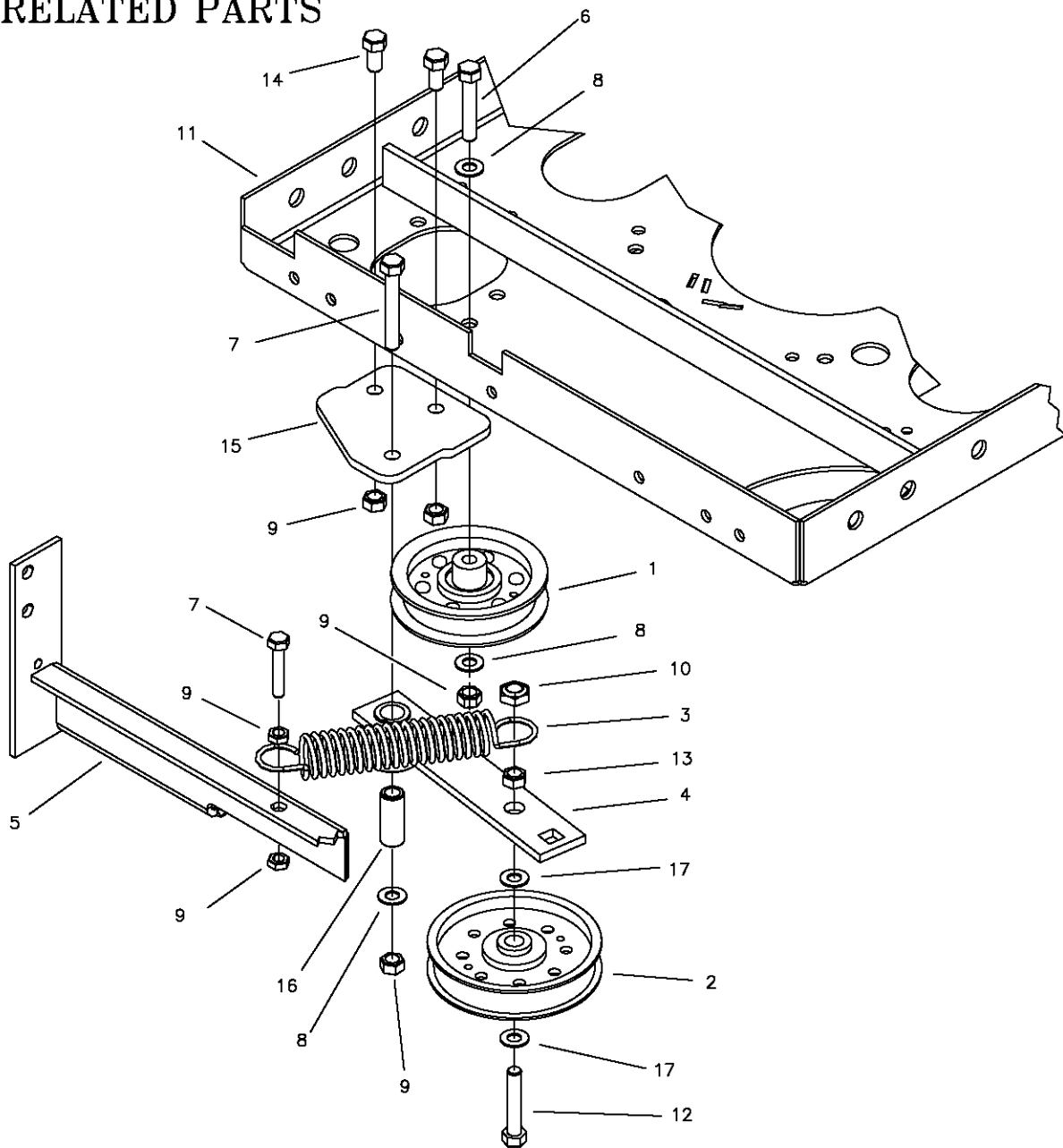
REF NO.	PART NO.	QTY.	DESCRIPTION	REF NO.	PART NO.	QTY.	DESCRIPTION
1	659-060P	1	LIFT HANDLE	15	642-095P	1	HANDLE PIVOT PIN
2	659-022W	1	FRAME WELDMENT, LH.	16	F-1005-03	6	NUT, 3/8-16 LOCKNUT (STOVER)
3	F-1073	1	3/8-18 X 2" GR 5	17	F-1889	2	CLEVIS PIN, 1/2 X 2 5/8"
4	642-061P	2	HANDLE LINK	18	F-1521	2	1/2" FLAT WASHER
5	642-041P	1	HANDLE PIVOT BRACKET	19	H-2239	2	RUE RING, 1/2"
6	642-127P	1	TOP PEG LATCH PLATE	20	H-2324	1	VINYL GRIP, 3/8 X 1 1/2"
7	642-126P	1	TOP PEG SPACER PLATE	21	H-2460	1	CABLE
8	H-1610	1	SPRING, 1 1/2" OD. X 8"	22	F-1293	2	1/2-13 X 1 1/2" GR. 5
9	F-1009-03	3	FLAT WASHER, 3/8"	23	F-1307	2	1/2-13 X 1 1/4" GR. 5
10	F-1672	2	CARRIAGE BOLT, 3/8-16 X 1 1/4"				
11	642-060P	2	SPRING ANCHOR PLATE				
12	F-1005-05	3	NUT, 1/2-13 LOCKNUT				
13	F-1394	2	3/8-16 X 1" GR. 5				
14	F-1439	1	1/2-13 X 3" GR. 5				

LIFT ASSEMBLY & RELATED PARTS



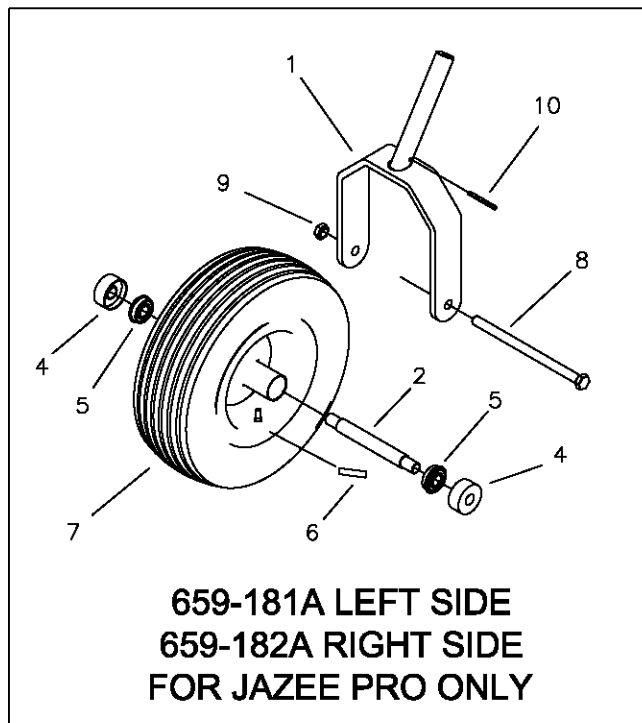
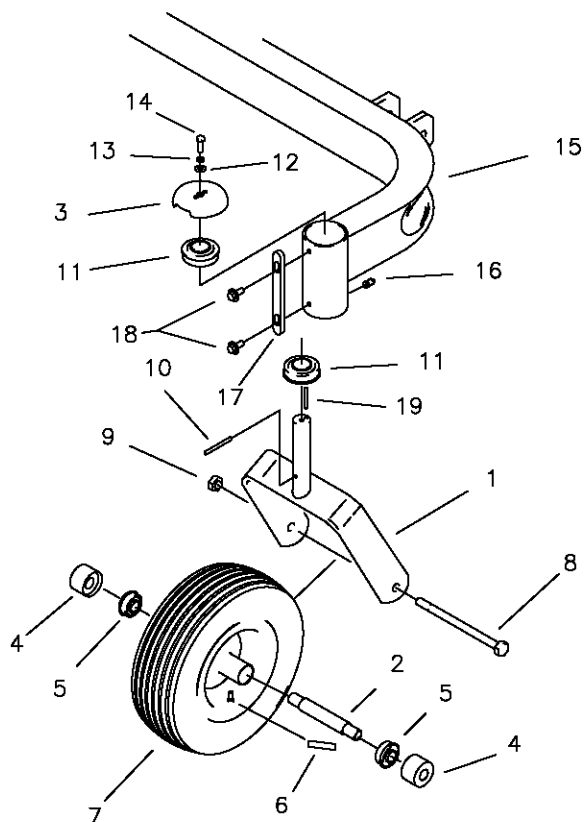
REF NO.	PART NO.	QTY.	DESCRIPTION	REF NO.	PART NO.	QTY.	DESCRIPTION
1	642-063P	2	DRAG BAR TAB	19	659-171A	1	RELEASE HANDLE ASSEMBLY
2	659-155P	4	DRAG LINK BAR	20	659-140P	2	DECK HOOK
3	620-051P	1	LIFT BAR	21	659-148W	1	RELEASE HANDLE WELDMENT
4	642-081P	2	LIFT SLEEVE, FRONT	22	659-145P	1	HOOK KEEPER
5	642-082P	2	LIFT SLEEVE, REAR	23	H-2547	1	SPRING, TORSION
6	F-1879	1	5/16-18 X 1 1/4" GR.5	24	F-1005-03	1	NUT, 3/8-16, STOVER
7	F-1125	1	5/16-18 STOVER NUT	25	F-1009-03	2	WASHER, FLAT, 3/8"
8	659-056P	1	DECK LIFT PEDAL	26	F-2009	2	SPIROL ROLL PIN 1/4 X 1-1/2
9	642-177P	4	HANGER PIN	27	F-1073	1	CAPSCREW, 3/8-16 X 2, GR. 5
10	F-1896	2	CLEVIS PIN, 1/2 X 1 3/4"	28	H-2401	1	TREAD PAD
11	F-1489	4	NUT, 1/2" JAM	29	F-1005-05	1	1/2" STOVER NUT
12	F-1936	4	1/2-13 X 3 1/2, 2" THREAD	30	659-146P	1	LATCH PLATE
13	F-1521	8	WASHER, 1/2 NARROW	31	659-170P	1	PLATE, CATCH
14	H-2239	8	RUE RING, 1/2"	32	F-1158	2	NUT, 1/4" STOVER
15	H-2240	2	CLEVIS PIN, 1/2 X 4 1/2"	33	F-1823	2	CARRIAGE BOLT, 1/4-20 X 3/4"
16	F-1898	3	CLEVIS PIN, 1/2 X 2 3/4"	34	F-1828	1	1/2-13 x 3-1/2" CAPSCREW
17	F-2039	4	5/16-24 x 2" HHCS	35	F-2041	4	5/16-24 JAM NUT
18	642-175P	2	ADJUSTABLE HANGER END				

TRANSMISSION IDLERS & RELATED PARTS



REF NO.	PART NO.	QTY.	DESCRIPTION	REF NO.	PART NO.	QTY.	DESCRIPTION
1	D-3768	1	PULLEY, 3-1/2" X 1"	15	659-239P	1	BOLT ON IDLER MOUNT TAB
2	D-3617	1	PULLEY, FLAT IDLER, 1/2" BORE, 4"	16	659-085P	1	MOUNTING PIN
3	H-2092	1	SPRING, 1 1/4 X 5"	17	F-1009-05	2	1/2" FLAT WASHER
4	661-090A	1	IDLER ARM ASSEMBLY				
5	659-160W	1	BRACE WELDMENT				
6	F-1073	1	3/8-16 x 2" CAPSCREW				
7	F-1015-30	2	3/8-16 X 2-1/2" GR. 5				
8	F-1009-03	2	3/8" FLAT WASHER				
9	F-1005-03	6	3/8-16 STOVER LOCK NUT				
10	F-1966	1	1/2" THIN NYLOC NUT				
11	659-174W	1	MOTOR MOUNT WELDMENT				
12	F-1664	1	1/2-13 x 2-1/4" CAPSCREW				
13	F-1005-05	1	1/2-13 STOVER NUT				
14	F-1015-23	2	3/8-16 x 3/4" CAPSCREW				

CASTER WHEEL ASSEMBLY

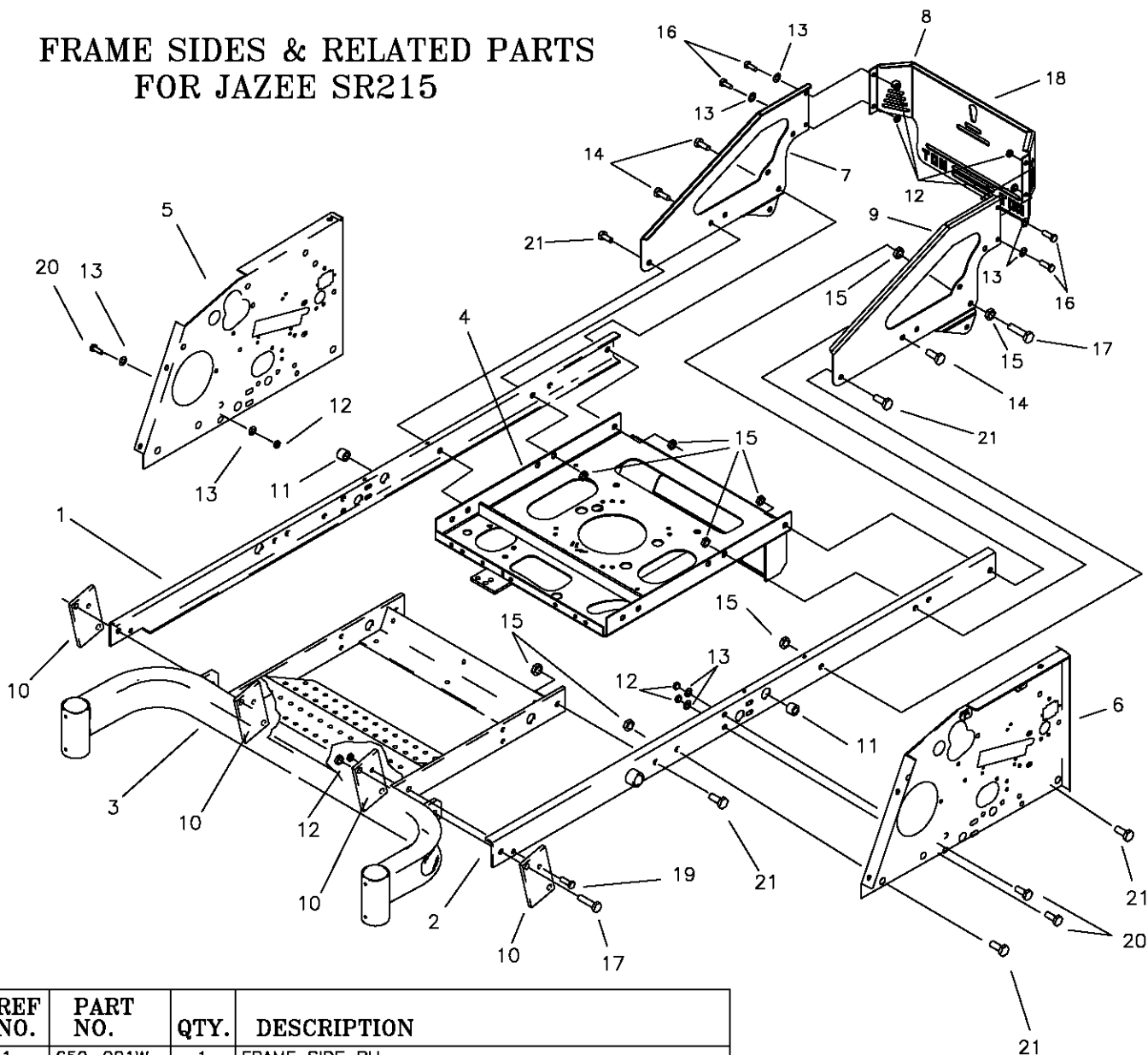


NOTE:

REF. NO. 3 IS SHOWN IN REFERENCE POSITION FOR CLARITY. WHEN INSTALLING, THE NOTCH SHOULD POINT TOWARDS THE BACK OF MOWER

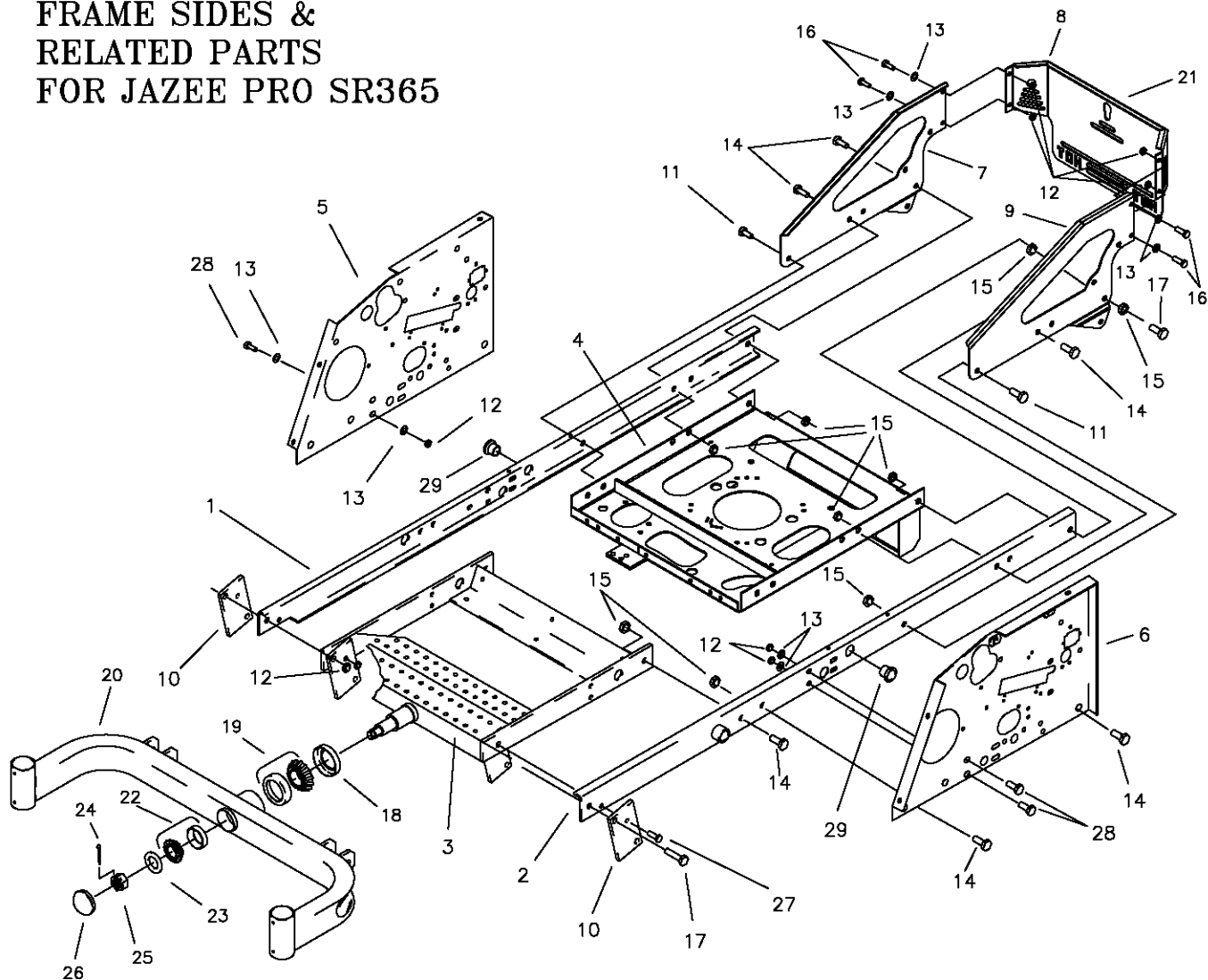
REF NO.	PART NO.	QTY.	DESCRIPTION
1	659-184W	2	CASTER WELDMENT FOR JAZEE
-	617-375W	2	CASTER WELDMENT FOR JAZEE PRO
2	622-121P	2	BEARING SPACER
-	611-136P	2	BEARING SPACER, JAZEE PRO
3	636-176P	2	BEARING CAP, RED
4	659-004P	4	BEARING SHIELD
-	611-135P	4	BEARING SHIELD, JAZEE PRO
5	D-3432	4	BEARING, 5/8 ID X 1-3/8 OD
6	P-11384	2	DECAL, 12 PSI
7	D-3605	2	10" TIRE, W/RIM
-	D-3574	-	TIRE, 13" W/ WHEEL, JAZEE PRO
8	F-1129	2	1/2-13 X 8" GR. 5 BOLT
9	F-1005-05	2	1/2-13 LOCK NUT
10	F-1456	2	3/16" X 2" ROLL PIN
11	D-2008-02	4	BEARING, SPD SF-16-32
12	F-1009-01	2	1/4" FLAT WASHER
13	F-1019-01	2	1/4" LOCK WASHER
14	F-1810	2	1/4-20 X 3/4 W/NYLON PATCH
15	659-183W	1	FRONT AXLE WELDMENT FOR JAZEE
-	659-186W	1	FRONT AXLE WELDMENT FOR JAZEE PRO
-	663-065W	1	FRONT AXLE USED w/686J-002A DECK
16	H-1056	2	GREASE ZERK
17	659-185P	2	STOP TAB
18	F-2030	4	1/4" X 5/8" SELF TAPPING SCREW
19	F-1855	2	3/16" X 1" ROLL PIN

FRAME SIDES & RELATED PARTS
FOR JAZEE SR215



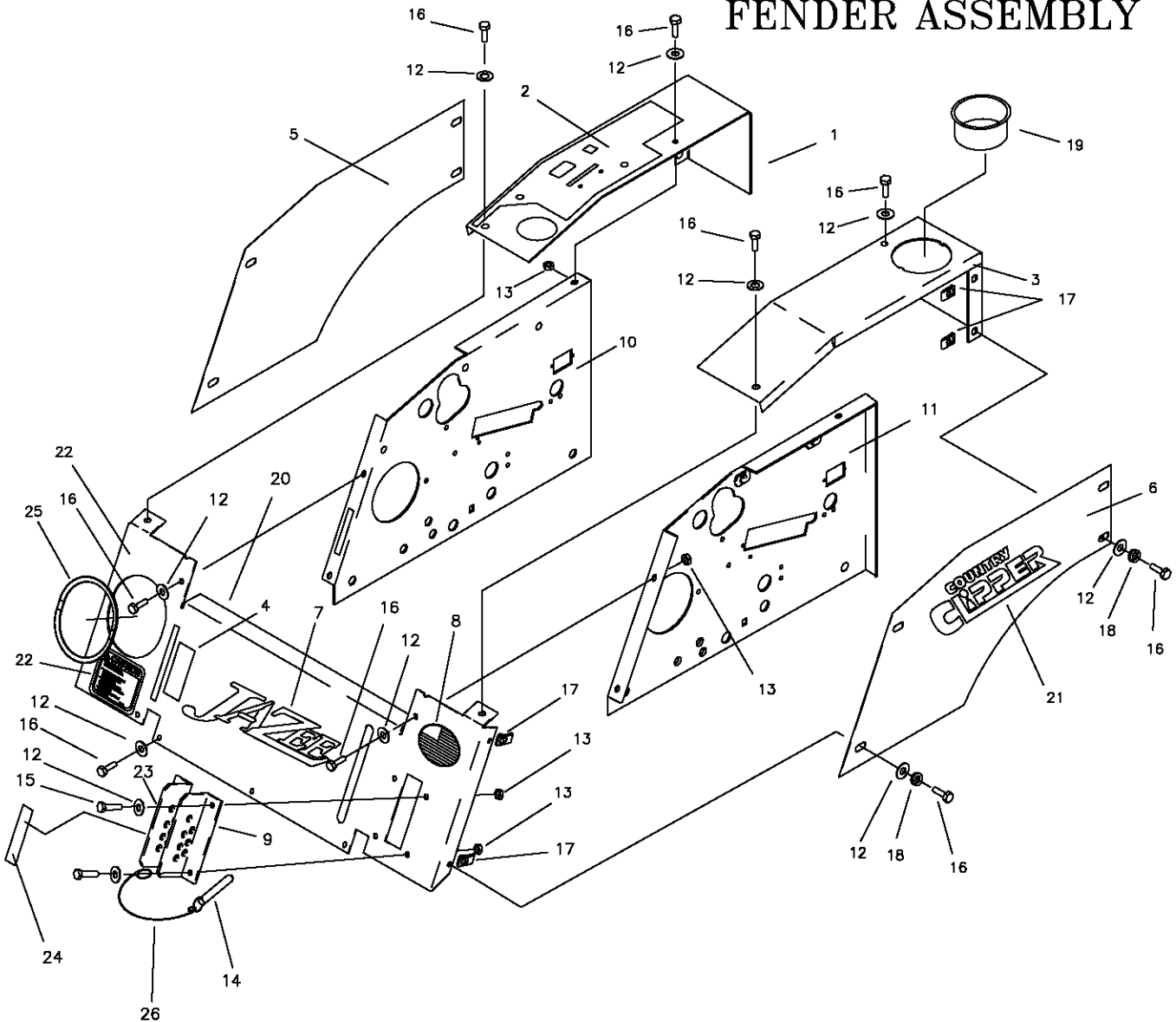
REF NO.	PART NO.	QTY.	DESCRIPTION
1	659-021W	1	FRAME SIDE RH.
2	659-022W	1	FRAME SIDE LH.
3	659-183W	1	AXLE MOUNTING WELDMENT
4	659-174W	1	MOTOR MOUNT WELDMENT
5	659-209W	1	SIDE PANEL RH.
6	659-202P	1	SIDE PANEL LH.
7	659-133P	1	ENGINE GUARD RH SIDE PANEL
8	647-120P	1	TWIN CYLINDER REAR PANEL (W/DECAL 647-123A)
-	659-135P	1	SINGLE CYLINDER REAR PANEL (W/DECAL 659-164A)
9	659-134P	1	ENGINE GUARD LH SIDE PANEL
10	642-063P	4	DRAG BAR TAB
11	D-3730	2	BUSHING, 5/8 BORE (JOYSTICK ONLY)
12	F-1005-03	10	3/8-16 STOVER NUT
13	F-1009-03	10	3/8 FLAT WASHER
14	F-1759	3	1/2-13 X 1" GR.5
15	F-1005-05	17	1/2-13 LOCK NUT
16	F-1558	4	3/8-16 X 7/8" GR.5
17	F-1293	3	1/2-13 X 2", GR.5
18	P-12097	1	COLORLED DECAL, "COUNTRY CLIPPER"
19	F-1073	2	3/8-16 x 2" CAPSCREW
20	F-1394	4	3/8-16 x 1" CAPSCREW
21	F-1386	6	1/2-13 x 1-1/4" CAPSCREW

FRAME SIDES &
RELATED PARTS
FOR JAZEE PRO SR365



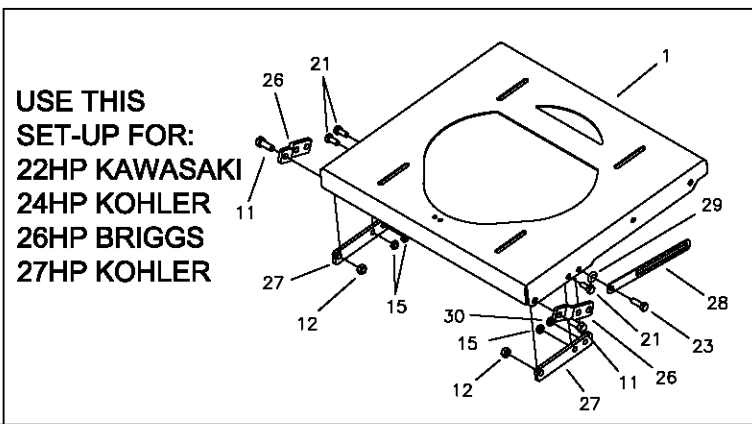
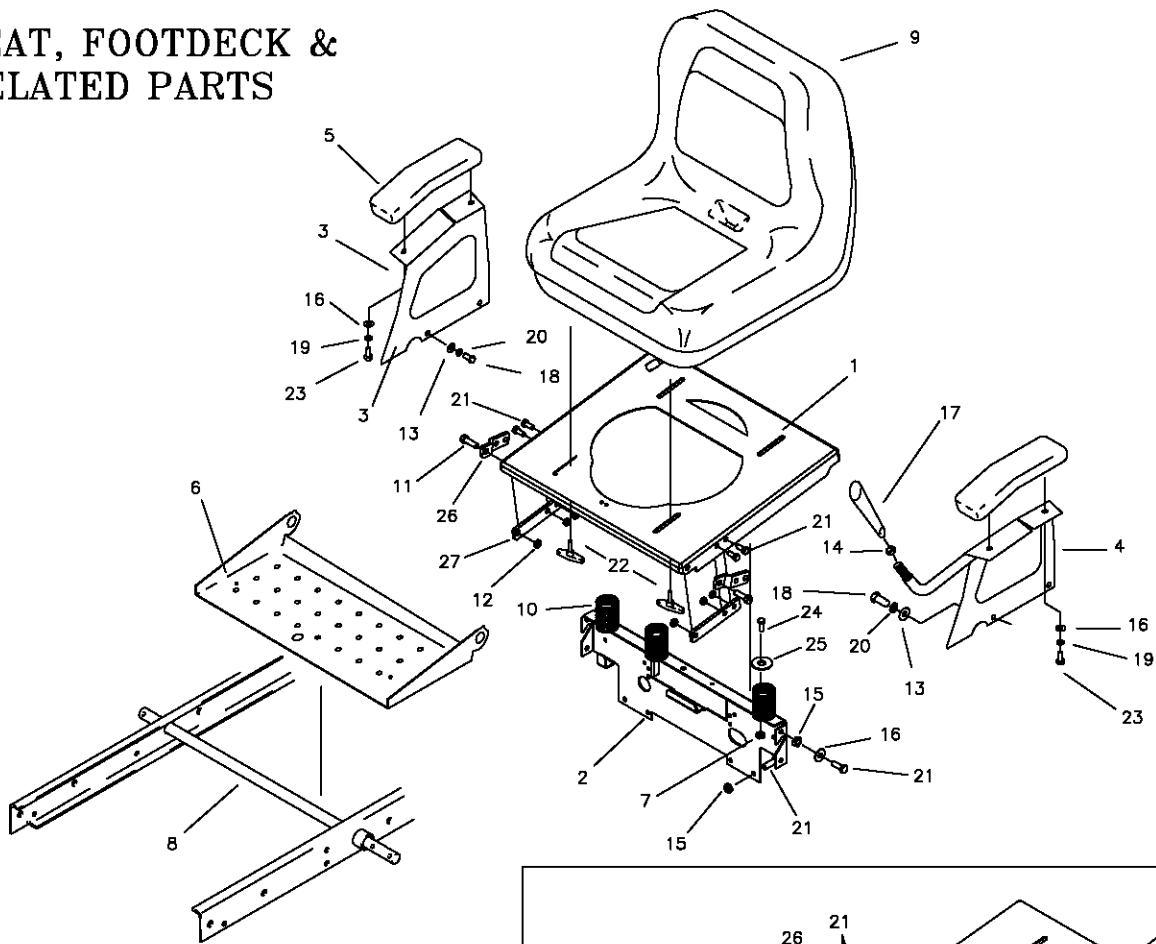
REF NO.	PART NO.	QTY.	DESCRIPTION	REF NO.	PART NO.	QTY.	DESCRIPTION
1	659-021W	1	FRAME SIDE RH.	18	D-3647	1	FRONT PIVOT SEAL
2	659-022W	1	FRAME SIDE LH.	19	D-3646	1	FRONT PIVOT TAPARED ROLLER BRG.
3	663-029W	1	AXLE MOUNTING WLDT.	20	659-186W	1	FRONT AXLE WLDT.
4	659-174W	1	MOTOR MOUNT WLDT.	-	663-065W	1	FRONT AXLE USED w/686J-002A DECK
5	659-209W	1	SIDE PANEL RH. (JOYSTICK)	21	P-12097	1	COLORDED DECAL, "COUNTRY CLIPPER"
-	659-253W	1	SIDE PANEL RH. (TWINSTICK)	22	D-3782	1	TAPARED ROLLER BRG.
6	659-202P	1	SIDE PANEL LH. (JOYSTICK)	23	606-303P	1	1" WASHER
-	659-255P	1	SIDE PANEL LH. (TWINSTICK)	24	F-1728	1	3/16 X 2" COTTER PIN
7	659-133P	1	ENGINE GUARD RH SIDE PANEL	25	F-1724	1	1-14 SLOTTED NUT
8	647-120P	1	REAR PANEL GUARD	26	H-1924	1	GREASE CAP
9	659-134P	1	ENGINE GUARD LH SIDE PANEL	27	F-1073	2	3/8-16 X 2" CAPSCREW
10	642-063P	2	DRAG BAR TAB	28	F-1394	4	3/8-16 X 1" CAPSCREW
11	F-1386	2	1/2-13 X 1-1/4" CAPSCREW	29	D-3730	2	BUSHING 5/8 BORE (JOYSTICK ONLY)
12	F-1005-03	10	3/8-16 STOVER NUT				
13	F-1009-03	10	3/8 FLAT WASHER				
14	F-1759	12	1/2-13 X 1" GR.5				
15	F-1005-05	12	1/2-13 LOCK NUT				
16	F-1558	4	3/8-16 X 7/8" GR.5				
17	F-1293	3	1/2-13 X 2", GR.5				

FENDER ASSEMBLY



REF NO.	PART NO.	QTY.	DESCRIPTION	REF NO.	PART NO.	QTY.	DESCRIPTION
1	659-273P	1	FENDER CAP RH (JOYSTICK)	14	F-2028	1	1/2" X 3" CLEVIS PIN
-	659-256P	1	FENDER CAP RH (TWINSTICK)	15	F-1879	4	5/16-18 X 1-1/4" GR. 5
2	P-11626	1	DECAL, "CONTROL PANEL"	16	F-1015-15	18	5/16-18 X 1" GR.5
3	659-263P	1	FENDER CAP LH. (JOYSTICK)	17	F-1860	8	5/16 U-NUT
-	659-257P	1	FENDER CAP LH. (TWINSTICK)	18	F-1019-02	8	5/16 LOCK WASHER
4	P-11382	1	DECAL, PARK BRAKE	19	H-2228	1	CUP HOLDER
5	659-023P	1	FENDER SKIRT RH (W/DECAL 659-188A)	20	659-200P	1	FRONT PANEL (W/JAZEE 659-190A)
6	659-023P	1	FENDER SKIRT LH (W/DECAL 659-189A)	-	659-200P	1	FRONT PANEL (W/JAZEE PRO 659-191A)
7	P-11624	1	DECAL, JAZEE	21	P-12097	2	DECAL, "COUNTRY CLIPPER"
-	P-12063	1	DECAL, JAZEE PRO	22	P-12557	1	DECAL, "CAUTION"
8	P-12253	1	MADE IN THE USA DECAL	23	642-130P	1	LATCH PLATE
9	642-131P	1	LATCH PLATE LH.	24	P-12257	1	DECAL, "CUT HEIGHT"(JAZEE SR215)
10	659-209W	1	SIDE PANEL RH. (JOYSTICK)	-	P-12039	1	DECAL, "CUT HEIGHT"(JAZEE PRO SR365)
-	659-253W	1	SIDE PANEL RH. (TWINSTICK)	25	H-1626	1	"U"-CHANNEL TRIM
11	659-202P	1	SIDE PANEL LH. (JOYSTICK)	26	F-2069	1	PLASTIC LANYARD
-	659-255P	1	SIDE PANEL LH. (TWINSTICK)				
12	F-1009-02	22	5/16 FLAT WASHER				
13	F-1125	16	5/16-18 LOCK NUT				

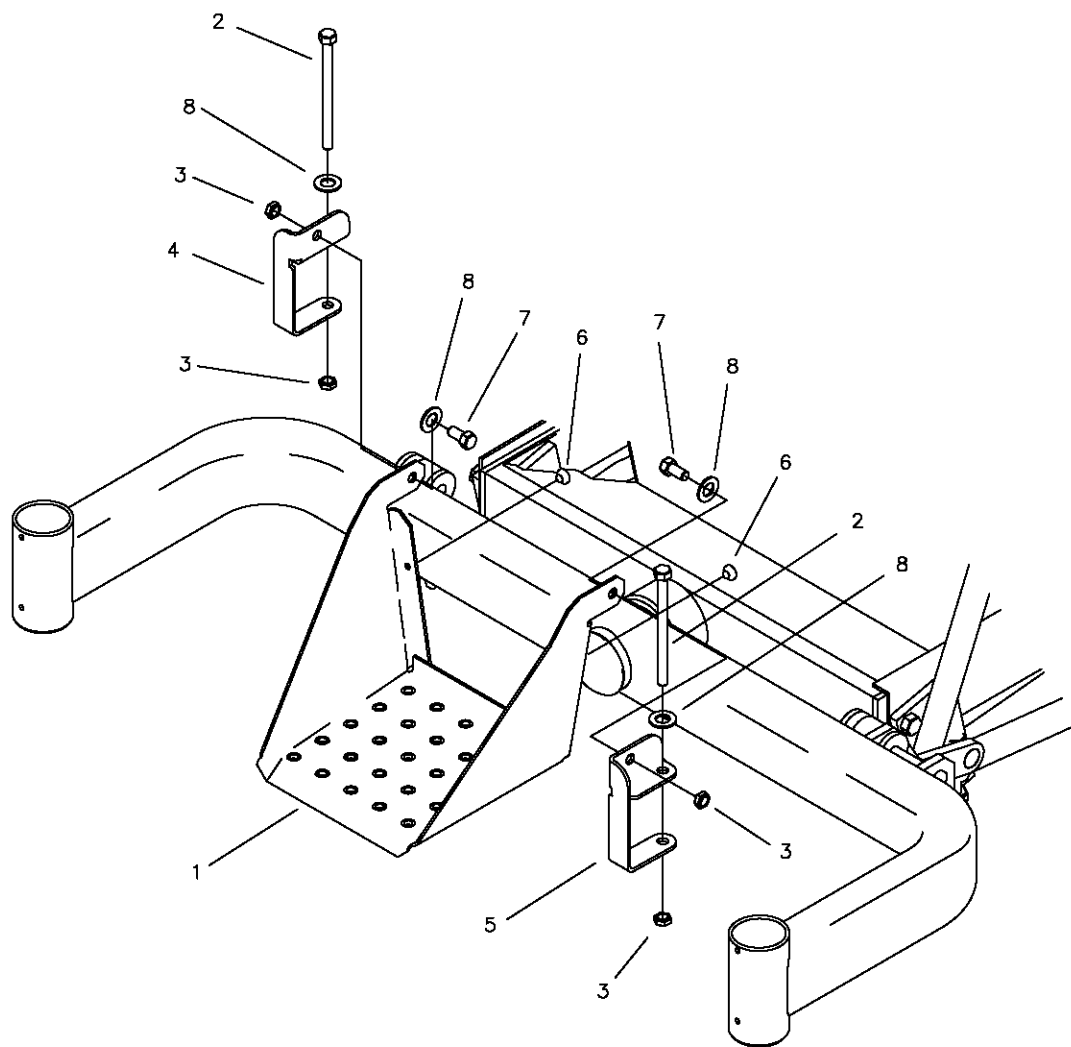
SEAT, FOOTDECK & RELATED PARTS



JS = JOYSTICK
TS = TWINSTICK

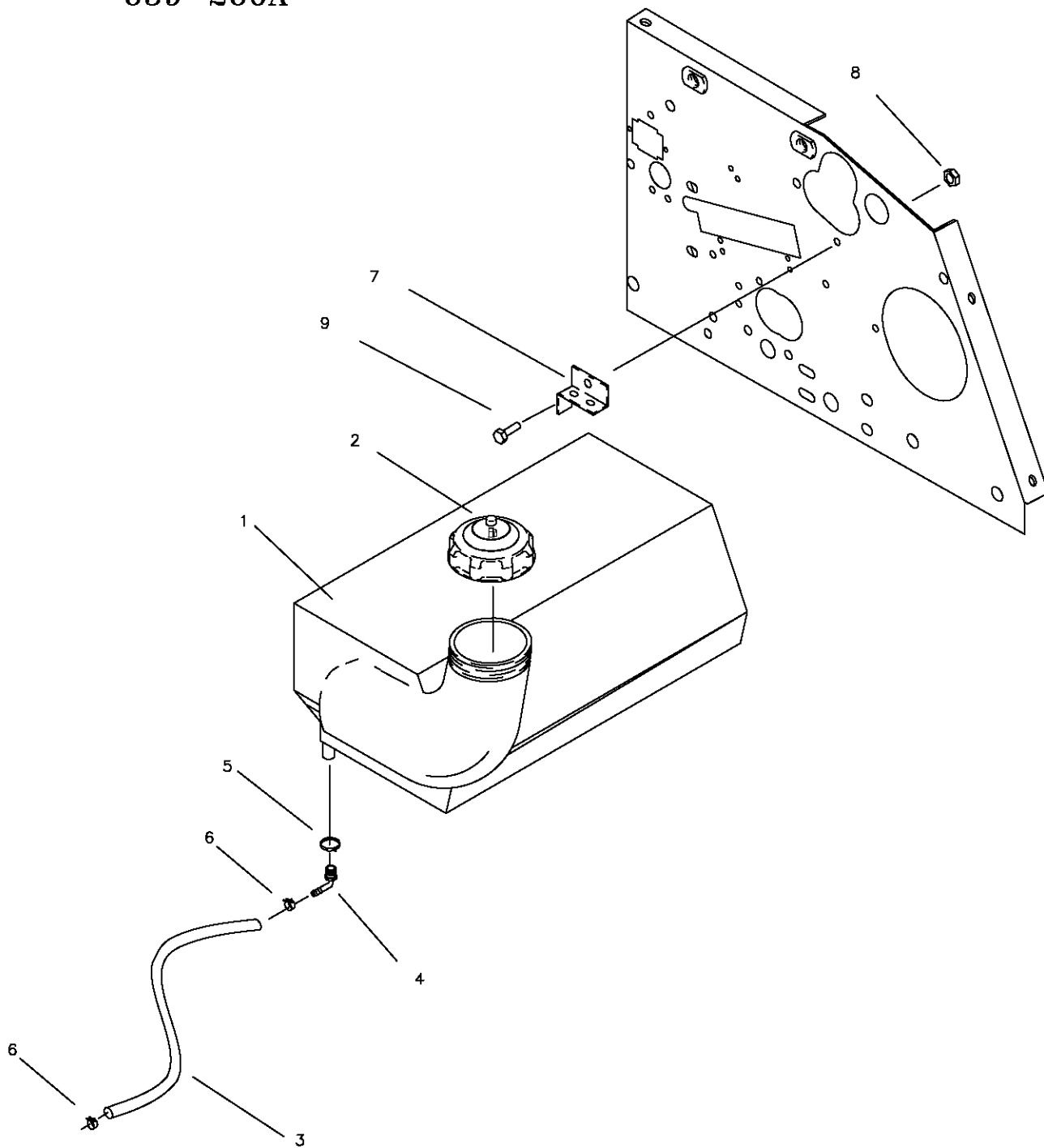
REF NO.	PART NO.	QTY.	DESCRIPTION	REF NO.	PART NO.	QTY.	DESCRIPTION
1	659-005P	1	SEAT MOUNTING BASE (20HP BRIGGS ONLY)	14	F-1486	1	3/8-16 JAM NUT
-	659-265P	1	SEAT MOUNTING BASE	15	F-1125	12	5/16-18 LOCK NUT
2	659-136P	1	REAR SEAT BRACE	16	F-1009-02	8	5/16 FLAT WASHER
3	659-051P	1	ARM REST RH. (20HP BRIGGS JS ONLY)	17	H-2317	1	TAPERED HANDLE
-	659-266P	1	ARM REST RH. (JOYSTICK & TWINSTICK)	18	F-1015-23	4	3/8-16 X 3/4" GR. 5
4	659-055W	1	ARM REST LH. (20HP BRIGGS JS ONLY)	19	F-1019-02	4	5/16 LOCK WASHER
-	636-163P	1	ARM REST LH. (20HP BRIGGS TS ONLY)	20	F-1019-03	4	3/8 LOCK WASHER
-	659-267P	1	ARM REST LH. (TWINSTICK)	21	F-1546	12	5/16-18 X 3/4" GR. 5
-	659-268W	1	ARM REST LH. (JOYSTICK)	22	659-073A	4	T-HANDLE ASSEMBLY
5	621-143A	2	ARM REST PAD (20HP BRIGGS ONLY)	23	F-1015-15	5	5/16-18 X 1" GR. 5
-	H-2615	2	ARM REST PAD	24	F-1538	3	1/4-20 X 3/4", GR.5
6	659-006P	1	FOOT PANEL	25	620-050P	3	1" HEAVY WASHER
7	F-1158	3	1/4" STOVER NUT	26	647-086P	2	FLIP SEAT MATING TAB
8	620-051P	1	LIFT BAR	27	659-175P	2	SEAT HINGE TAB
9	H-2449	1	SEAT ASSEMBLY (20HP BRIGGS ONLY)	28	659-272P	1	BAR, SEAT STOP
-	H-2604	1	SEAT ASSEMBLY	29	659-274P	1	PIVOT WASHER
10	H-1920	3	SEAT SPRING	30	F-1005-02	1	5/16-18 NYLOC NUT
11	F-1394	2	3/8-16 X 1 1/4" GR. 5				
12	F-1005-03	2	3/8-16 LOCK NUT				
13	F-1009-03	4	3/8 FLAT WASHER				

FRONT STEP ASSEMBLY FOR JAZEE PRO SR365



REF NO.	PART NO.	QTY.	DESCRIPTION
1	647-133P	1	FRONT STEP
2	F-1066	2	3/8-16 X 4" BOLT
3	F-1005-03	4	3/8-16 LOCK NUT
4	659-241P	1	STEP MOUNT BRACKET, RH
5	659-242P	1	STEP MOUNT BRACKET, LH
6	H-2461	2	RUBBER BUMPER BUTTON
7	F-1015-23	2	3/8-16 X 3/4" BOLT
8	F-1009-03	4	3/8 FLAT WASHER

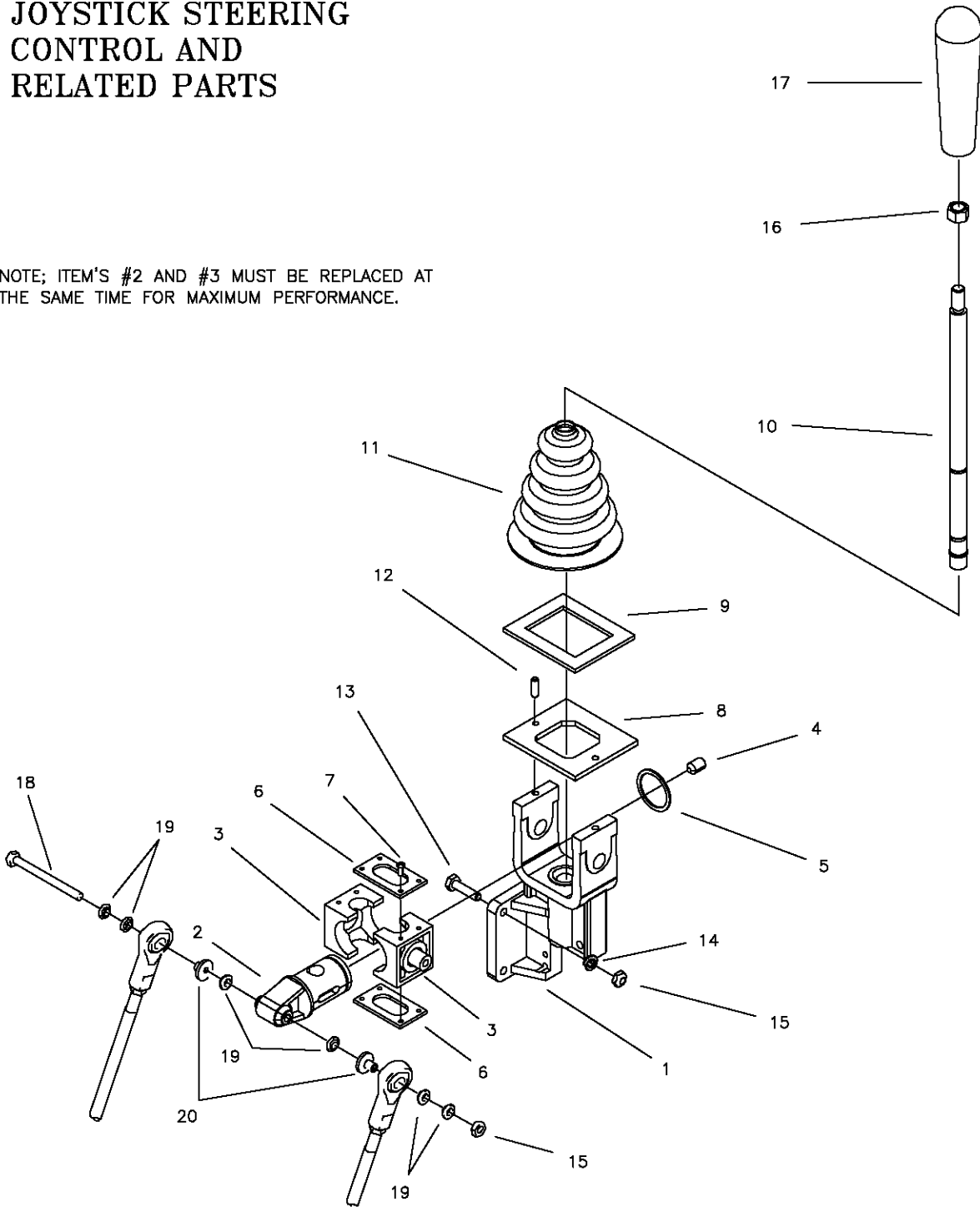
FUEL TANK ASSEMBLY 659-260A



REF NO.	PART NO.	QTY.	DESCRIPTION
1	H-2394	1	4 1/2 GALLON TANK
2	H-2232	1	GAS CAP
3	H-1648	1	FUEL LINE
4	H-1646	1	HOSE BARB, 90 DEG.
5	H-1952	1	HOSE CLAMP
6	H-1687	2	HOSE CLAMP, 1/2"
7	659-066P	1	TANK MOUNTING CLAMP
8	F-1158	1	1/4-20 STOVER NUT
9	F-1015-03	1	1/4-20 X 3/4, GR.5

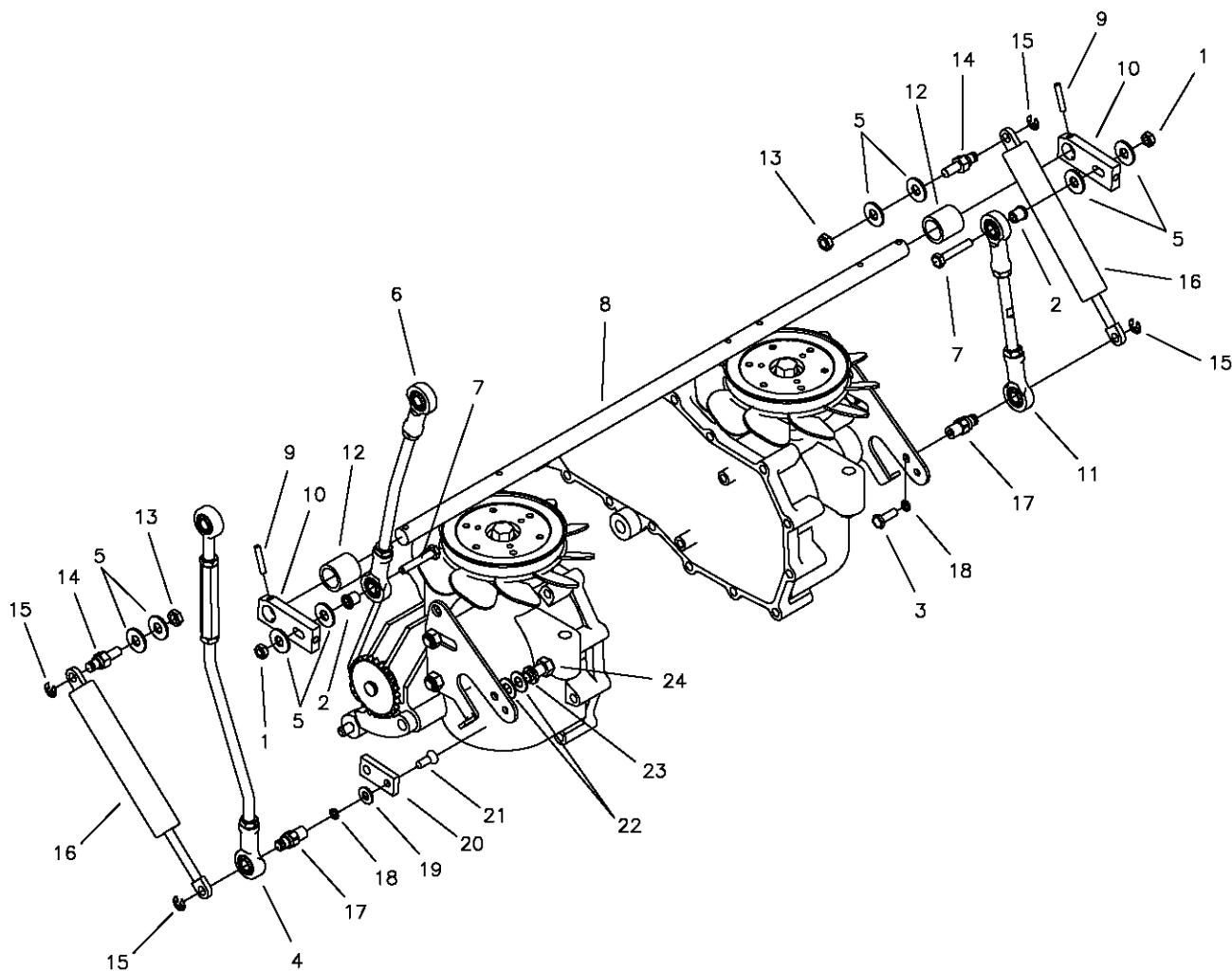
JOYSTICK STEERING CONTROL AND RELATED PARTS

NOTE; ITEM'S #2 AND #3 MUST BE REPLACED AT THE SAME TIME FOR MAXIMUM PERFORMANCE.



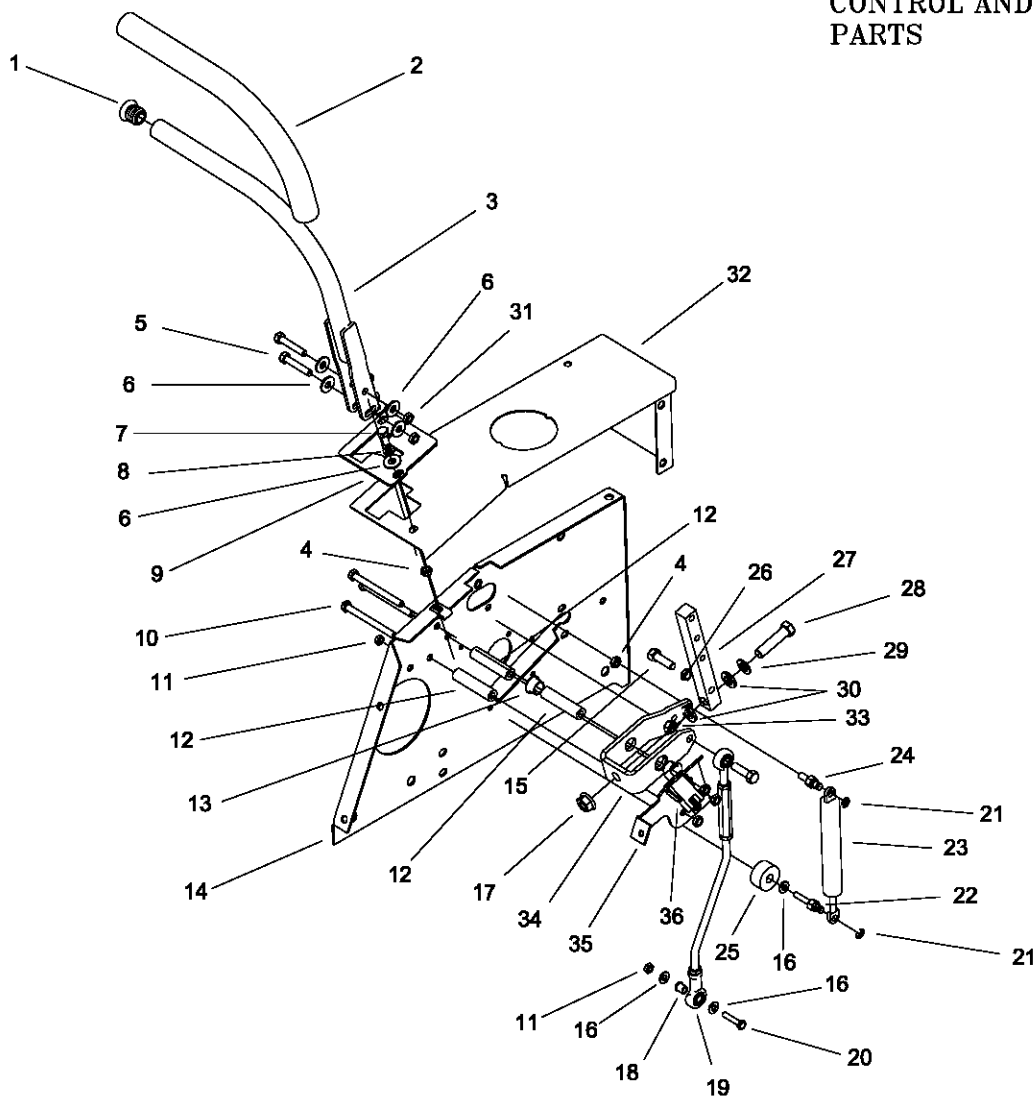
REF NO.	PART NO.	QTY.	DESCRIPTION	REF NO.	PART NO.	QTY.	DESCRIPTION
-	647-122A	1	JOYSTICK ASSEMBLY	11	H-1991	1	BOOT, BELLOWS
1	659-144P	1	JOYSTICK YOKE	12	F-1999	2	ROLL PIN, 3/16 X 5/8
2	H-1992	1	PIVOT SHAFT	13	F-1015-05	3	1/4-20 X 1" HHCS GR. 5
3	H-1993	2	PIVOT BLOCK	14	F-1019-01	3	1/4" LOCK WASHER
4	F-1120	1	BALL PLUNGER	15	F-1158	4	1/4-20 LOCK NUT
5	H-1997	1	SNAP RING, SPIRLOCK	16	F-1011-03	1	3/8-16 NUT, JAM
6	619-306P	2	PIVOT BLOCK PLATE	17	H-2317	1	GRIP, HANDLE
7	F-1624	8	#6-32 X 3/8" SCREW SLOT	18	F-1020-01	1	1/2-20 X 3-1/2" GR. 5
8	659-129P	1	JOYSTICK TOP PLATE	19	H-1989	6	BUSHING, BALL JOINT
9	H-1947	1	GASKET, FOAM	20	H-2465	2	1/4" SPACER
10	621-140A	1	JOYSTICK SHAFT ASSEMBLY				

**JOYSTICK STEERING
CONTROL AND
RELATED PARTS
FOR JAZEE SR215
& JAZEE PRO SR365**



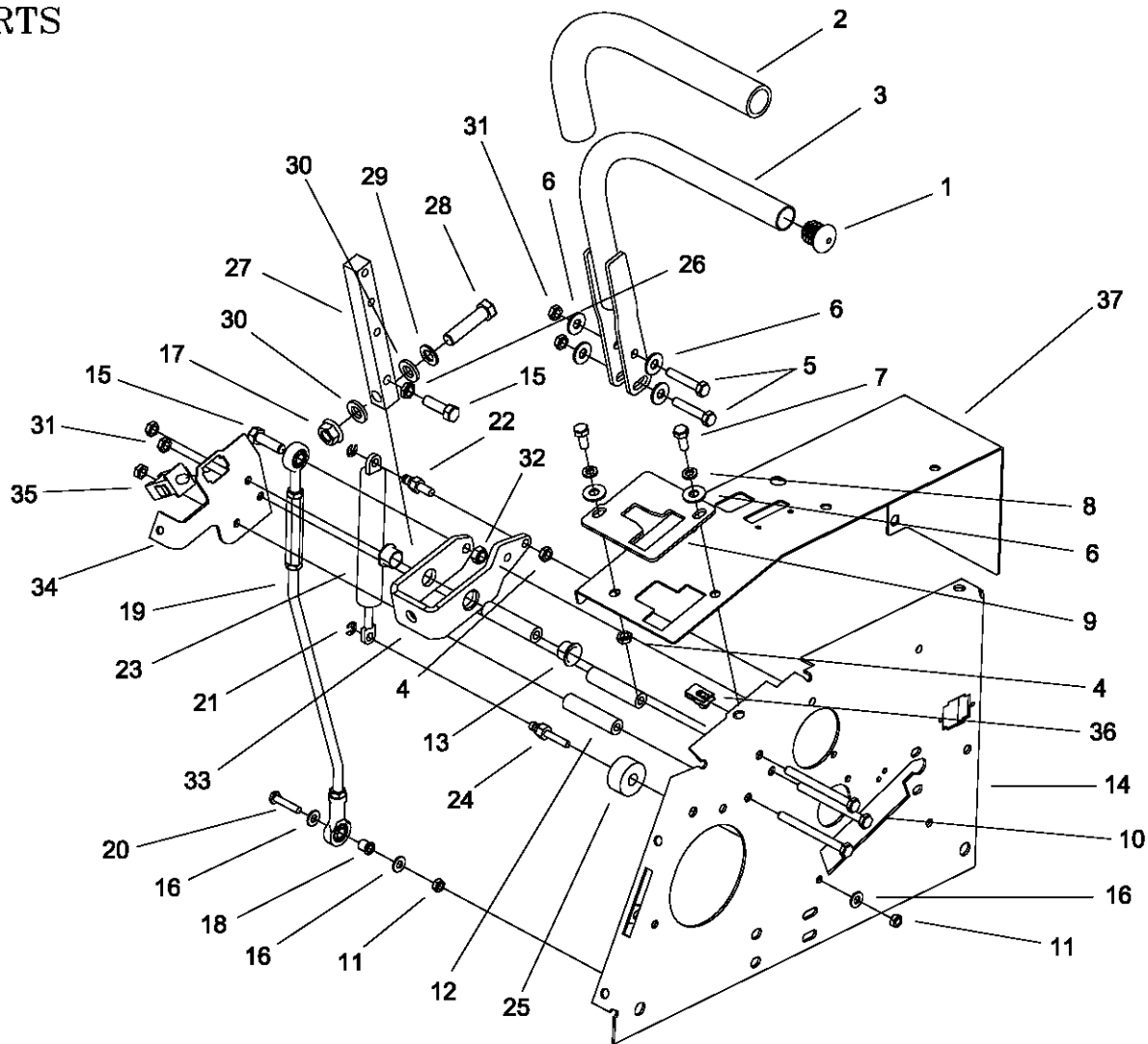
REF NO.	PART NO.	QTY.	DESCRIPTION	REF NO.	PART NO.	QTY.	DESCRIPTION
1	F-1158	2	1/4-20 LOCK NUT	15	F-1610	4	E-RING FOR 1/4" SHAFT
2	H-2465	2	1/2 X 1/4" SHOULDERWASHER	16	H-2467	2	DUAL ACTION DAMPNER
3	F-1015-05	1	1/4-20 X 1"	17	663-051P	2	DAMPNER STUD (FEMALE)
4	663-050P	1	STEERING LINKAGE	18	F-1019-01	2	1/4" LOCKWASHER
5	F-1009-02	8	1/4" FLAT WASHER	19	F-1009-01	1	1/4" FLAT WASHER
6	663-049P	1	UPPER STEERING LINKAGE	20	659-275P	1	TRACKING ADJUSTMENT BLOCK
7	F-1716	2	1/4-20 X 1 1/2"	21	F-1609	1	1/4-20 x 3/4" F.H.C.S.
8	659-026P	2	HYDRO SHAFT ROD	22	F-1009-03	2	3/8" FLAT WASHER
9	F-1503	2	ROLL PIN 3/16 X 1"	23	F-1019-03	1	3/8" LOCKWASHER
10	625-030P	2	SWIVEL ARM	24	F-1015-23	1	3/8-16 x 3/4 H.H.C.S.
11	659-127P	1	LOWER STEERING LINKAGE				
12	651-024P	2	SPACER				
13	F-1125	2	5/8-16 STOVER NUT				
14	638-028P	2	DAMPNER BOLT, 5/16-18 x 3/4				

LEFT HAND STEERING CONTROL AND RELATED PARTS



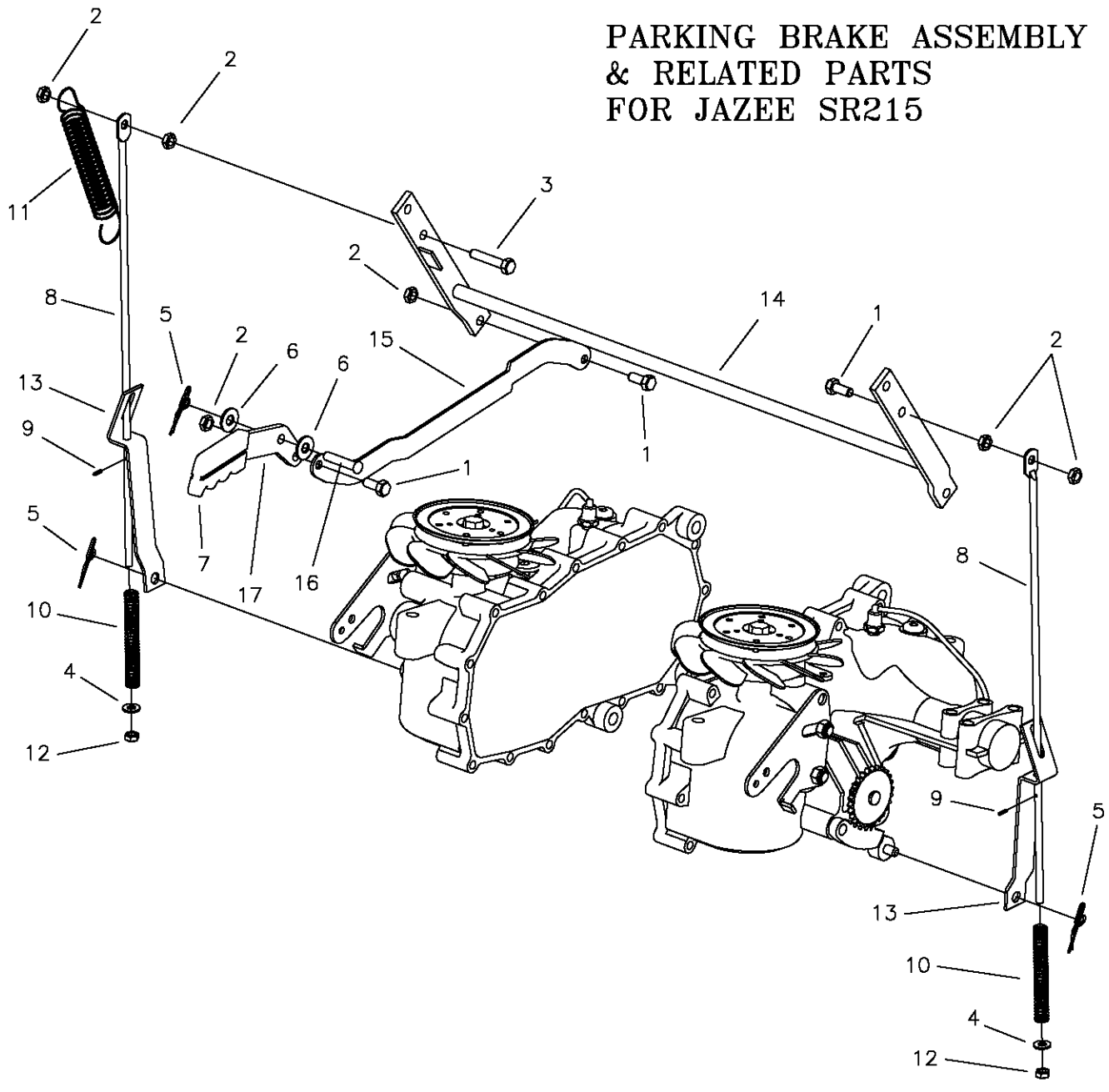
REF NO.	PART NO.	QTY.	DESCRIPTION	REF NO.	PART NO.	QTY.	DESCRIPTION
1	H-2080	1	END PLUG, 15/16" BLACK	23	H-2168	1	STEERING DAMPER
2	H-2079	1	FOAM GRIP, 17"	24	638-028P	1	DAMPER BOLT, 5/16-18 X 3/4"
3	659-249W	1	ARM WELDMENT	25	F-2045	1	SPACER
4	F-1125	2	5/16 LOCK NUT	26	F-1486	1	3/8-16 JAM NUT
5	F-1015-18	2	5/16-18 x 1-3/4" HHCS	27	659-247P	1	LOWER SHIFT BLOCK
6	F-1009-02	6	WASHER, FLAT STD. 5/16"	28	F-1293	1	1/2-13 x 2" HHCS
7	F-1546	2	5/16-18 X 3/4" HHCS GR. 5	29	F-1521	1	1/2" WASHER
8	F-1019-02	2	5/16" LOCK WASHER	30	606-151P	2	1/2 ID x 1/8 NYLOC WASHER
9	659-262P	1	NEUTRAL PLATE	31	F-1005-02	2	5/16-18 NYLOC WASHER
10	F-2058	3	5/16-18 x 3-1/2" HHCS	32	659-257P	1	LH TWINSTICK FENDER CAP
11	F-1158	2	1/4-20 LOCK NUT	33	F-1005-03	1	3/8-16 LOCK NUT
12	659-252P	3	TUBE SPACER	34	659-243P	1	SHIFTING YOKE
13	D-3730	2	5/8" FLANGED BUSHING	35	659-245P	1	LH MOUNTING BRACKET
14	659-255P	1	LH SIDE PANEL	36	E6474	1	SWITCH, DELTA
15	F-1307	1	3/8-16 x 1-1/2" HHCS				
16	F-1009-01	3	1/4" FLAT WASHER				
17	F-2060	1	1/2-13 FLANGED LOCK NUT				
18	H-2465	1	1/2 X 1/4" SHOULDER WASHER				
19	663-050P	1	LINK ROD ASSEMBLY				
20	F-1539	2	1/4-20 X 1-1/4" HHCS GR. 5				
21	F-1610	2	E-RING FOR 1/4" SHAFT				
22	638-029P	1	1/4-20 DAMPNER BOLT				

RIGHT HAND STEERING CONTROL AND RELATED PARTS



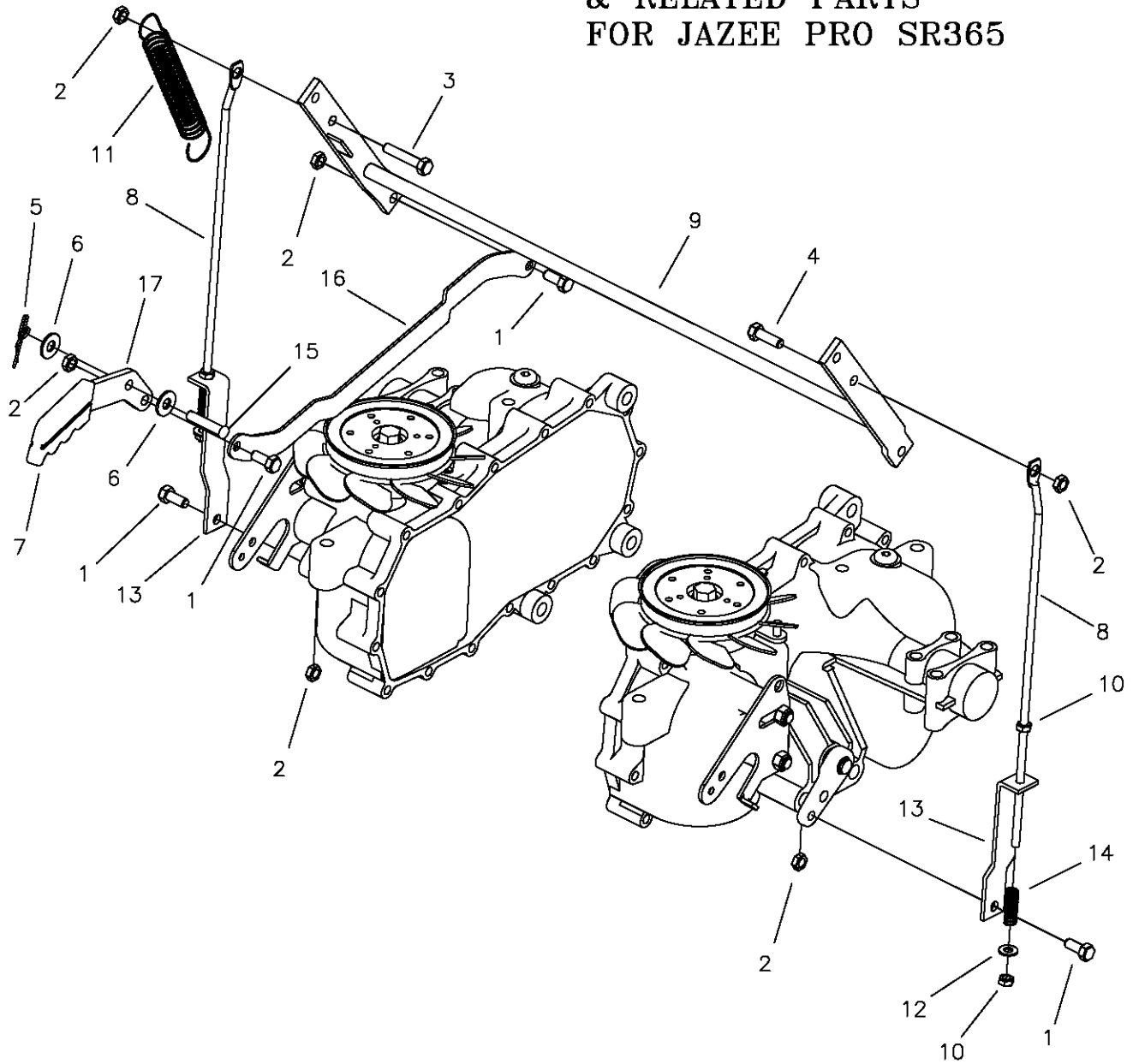
REF NO.	PART NO.	QTY.	DESCRIPTION	REF NO.	PART NO.	QTY.	DESCRIPTION
1	H-2080	1	END PLUG, 15/16" BLACK	22	638-028P	2	DAMPER BOLT, 5/16-18 X 3/4"
2	H-2079	1	FOAM GRIP, 17"	23	H-2168	1	STEERING DAMPER
3	659-249W	1	ARM WELDMENT	24	638-029P	1	DAMPNER BOLT 5/16-18 x 3/4"
4	F-1125	2	5/16 LOCK NUT	25	F-2045	1	SPACER
5	F-1015-18	2	5/16-18 X 1-3/4" HHCS	26	F-1486	1	3/8-16 JAM NUT
6	F1009-02	6	5/16 FLAT WASHER	27	659-247P	1	LOWER SHIFT BLOCK
7	F-1546	2	5/16-18 x 3/4" HHCS	28	F-1293	1	1/2-13 x 2" HHCS
8	F-1019-02	2	5/16 LOCK WASHER	29	F-1521	1	1/2" WASHER
9	659-262P	1	NEUTAL PLATE	30	606-151P	2	1/2 ID x 1/8 NYLOC WASHER
10	F-2058	3	5/16-18 X 3-1/2" HHCS	31	F-1005-02	3	5/16-18 NYLOC WASHER
11	F-1158	2	1/4-20 LOCK NUT	32	F-1005-03	1	3/8-16 LOCK NUT
12	659-252P	3	TUBE SPACER	33	659-243P	1	SHIFTING YOKE
13	D-3730	2	5/8 FLANGED BUSHING	34	659-244P	1	RH MOUNTING BRACKET
14	659-253W	1	RH SIDE PANEL	35	E-6474	1	SWITCH, DELTA
15	F-1307	2	3/8-16 x 1-1/2" HHCS	36	F-1860	1	5/16-18 "U"-NUT
16	F-1009-01	3	1/4" FLAT WASHER	37	659-256P	1	RH TWINSTICK FENDER CAP
17	F-2060	1	1/2-13 FLANGED LOCK NUT				
18	H-2465	1	1/2 x 1/4 SHOULDER WASHER				
19	663-050P	1	STEERING LINKAGE				
20	F-1539	2	1/4-20 x 1-1/4" HHCS				
21	F-1610	2	E-RING FOR 1/4" SHAFT				

PARKING BRAKE ASSEMBLY & RELATED PARTS FOR JAZEE SR215



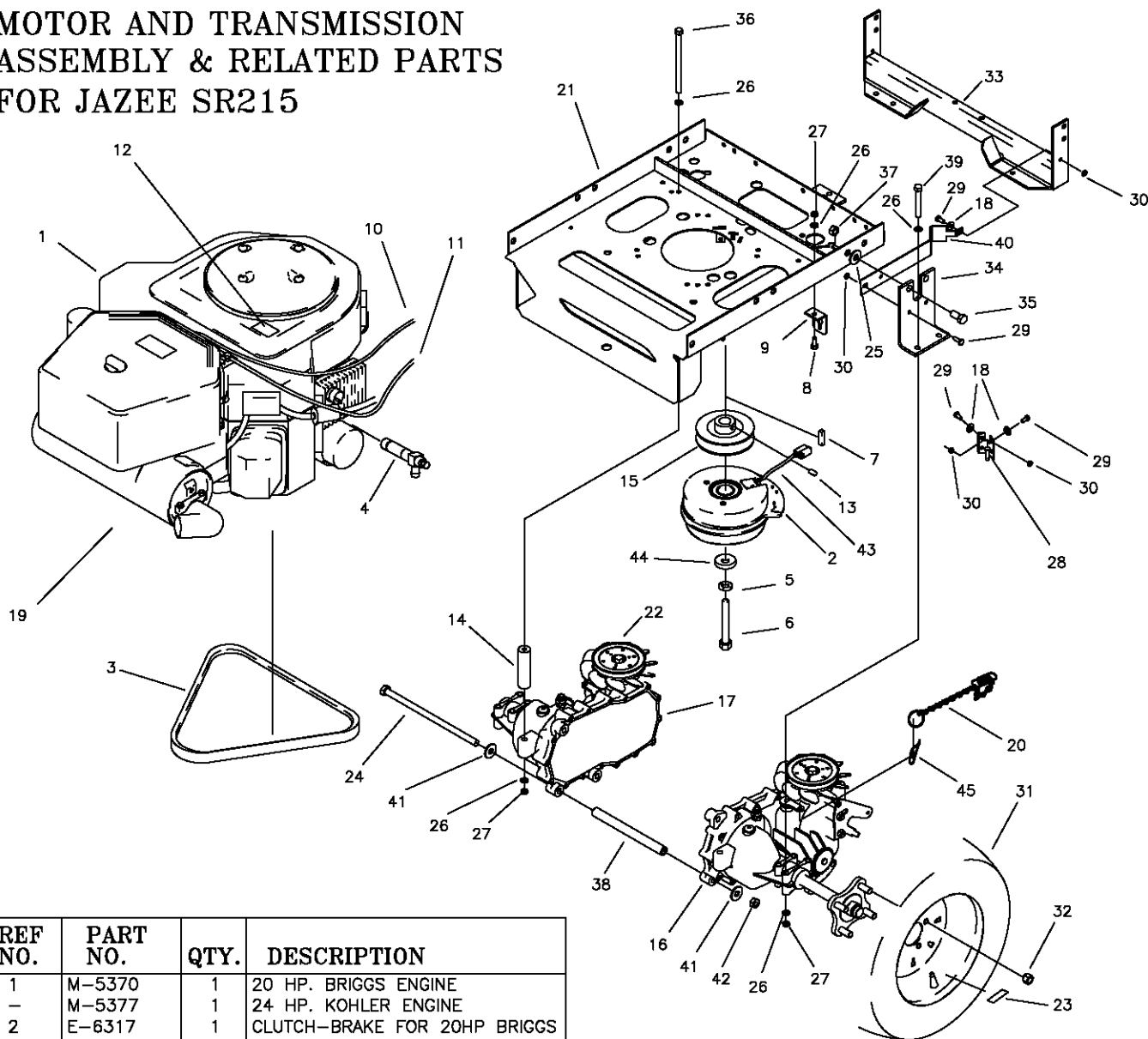
REF NO.	PART NO.	QTY.	DESCRIPTION	REF NO.	PART NO.	QTY.	DESCRIPTION
1	F-1546	3	5/16-18 X 3/4" GR. 5	15	659-203P	1	BRAKE LINK
2	F-1125	6	5/16" STOVER LOCK NUT	16	F-1533	1	5/16 X 1-1/2" CLEVIS PIN
3	F-1015-17	1	5/16-18 X 1-1/2" GR. 5	17	659-204P	1	BRAKE HANDLE
4	F-1009-01	2	1/4" FLAT WASHER				
5	F-1492	3	RUE RING, 5/16-3/8 PIN				
6	F-1009-02	2	5/16" FLAT WASHER				
7	H-1926	1	GRIP, HANDLE, 1/4" X 1"				
8	H-2206	2	BRAKE LINK ROD				
9	H-1800	2	ROLL PIN 3/32 OD X 3/8 LONG				
10	H-2426	2	SPRING, 3.69 X .372 ID X .064				
11	H-1635	1	SPRING, EXT. 3/4 X 4" OAL				
12	F-1158	2	1/4-20 STOVER NUT				
13	659-013P	2	LOWER BRAKE LINK				
14	659-206W	1	BRAKE ROD WELDMENT				

PARKING BRAKE ASSEMBLY & RELATED PARTS FOR JAZEE PRO SR365



REF NO.	PART NO.	QTY.	DESCRIPTION	REF NO.	PART NO.	QTY.	DESCRIPTION
1	F-1546	4	5/16-18 X 3/4" H.H.C.S.	15	F-1533	1	5/16 x 1-1/2" CLEVIS PIN
2	F-1125	6	5/16" STOVER LOCK NUT	16	659-203P	1	BRAKE LINK
3	F-1015-17	1	5/16-18 X 1-1/2" H.H.C.S.	17	659-204P	1	BRAKE HANDLE
4	F-1015-15	1	5/16-18 X 1" H.H.C.S				
5	F-1492	2	RUE RING, 5/16-3/8 PIN				
6	F-1009-02	2	5/16" FLAT WASHER				
7	H-1926	1	HANDLE GRIP				
8	H-2452	2	BRAKE LINK BAR, BENT				
9	659-206W	1	BRAKE ROD WELDMENT				
10	F-1158	4	1/4" STOVER LOCK NUT				
11	H-1635	1	EXTENSION SPRING 3/4 X 4"				
12	F-1009-01	2	1/4" FLAT WASHER				
13	659-159P	2	LOWER BRAKE LINK				
14	H-1637	2	COMPRESSION SPRING				

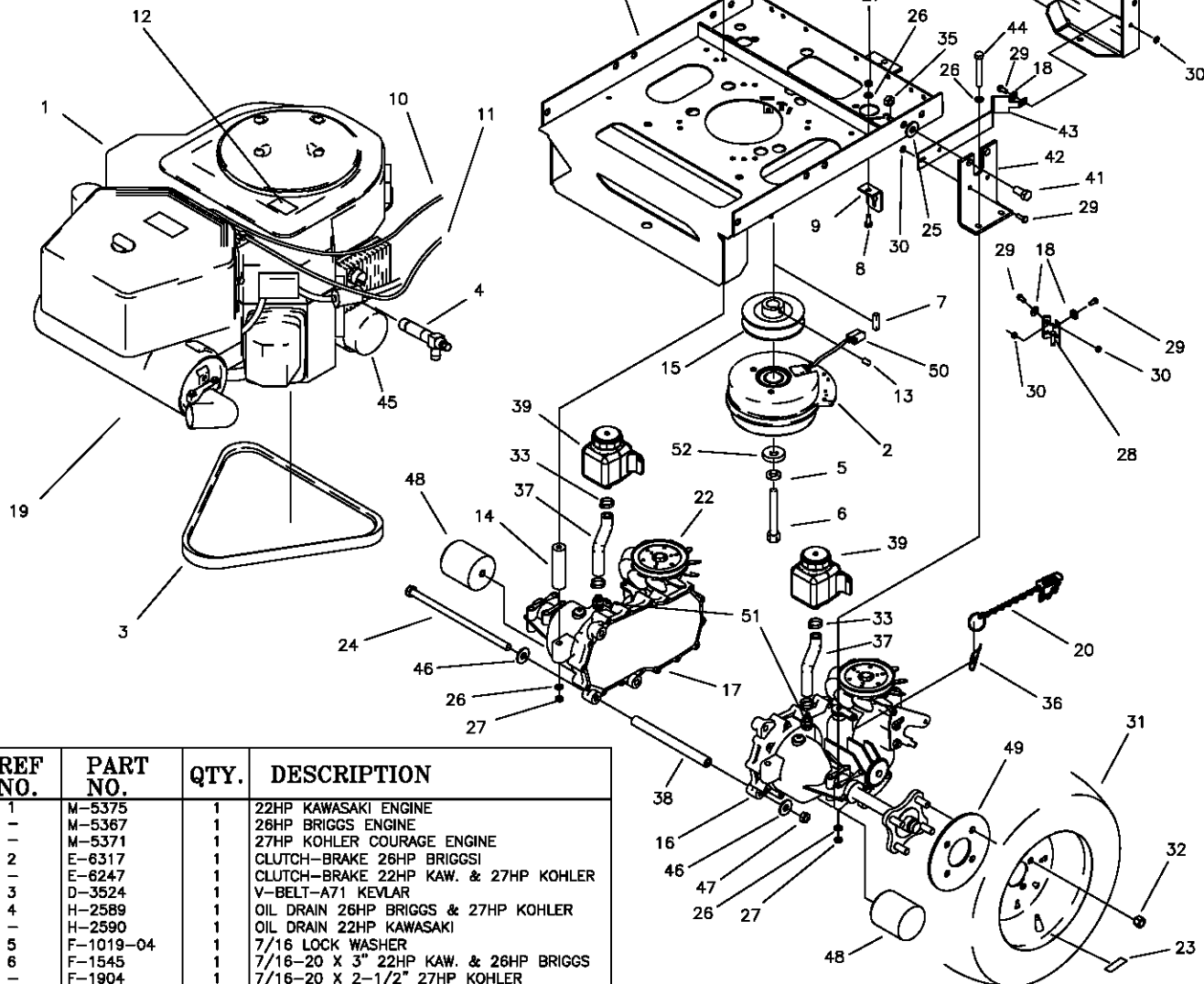
MOTOR AND TRANSMISSION ASSEMBLY & RELATED PARTS FOR JAZEE SR215



REF NO.	PART NO.	QTY.	DESCRIPTION
1	M-5370	1	20 HP. BRIGGS ENGINE
-	M-5377	1	24 HP. KOHLER ENGINE
2	E-6317	1	CLUTCH-BRAKE FOR 20HP BRIGGS
-	E-6247	1	CLUTCH-BRAKE FOR 24HP KOHLER
3	D-3524	1	V-BELT-A71 KEVLAR
4	H-2589	1	OIL DRAIN VALVE
5	F-1019-04	1	7/16 LOCK WASHER
6	F-1545	1	7/16-20 X 3" 20HP BRIGGS
-	F-1904	1	7/16-20 X 2-1/2" 24HP KOHLER
7	621-113P	1	KEY, 1/4 SQ. X 1-1/4"
8	F-1546	2	5/16-18 X 3/4" BOLT
9	659-119P	2	FREE WHEEL ANCHOR
10	H-2403	1	CHOKE CABLE, 20HP BRIGGS
-	H-2404	1	CHOKE CABLE, 24HP KOHLER
11	H-2609	1	THROTTLE CABLE 20HP BRIGGS
-	H-2610	1	THROTTLE CABLE 24HP KOHLER
12	P-10077-11	1	DECAL, "CLEAN"
13	F-1228	1	SETSCREW, 1/4" X 1/4"
14	659-121P	2	REAR HYDRO BRACE
15	D-3726	1	MOTOR PULLEY 20HP BRIGGS
-	659-154P	1	MOTOR PULLEY 24HP KOHLER
16	D-3783-01	1	TRANSAXLE HYDRO (RH)
17	D-3783-02	1	TRANSAXLE HYDRO (LH)
18	F-1009-01	4	1/4" FLAT WASHER
19	H-2513	1	MUFFLER FOR 24HP KOHLER
20	659-066P	2	FREEWHEEL CHAIN W/SPRING
21	659-174W	1	MOTOR MOUNT
22	H-2539	2	FAN BLADE REPLACEMENT
23	P-11384	2	DECAL, TIRE PRESSURE, 12 PSI
24	F-2048	1	3/8-16 X 12" HEX BOLT

REF NO.	PART NO.	QTY.	DESCRIPTION
25	F-1009-05	4	1/2" FLAT WASHER
26	F-1009-02	14	5/16" FLAT WASHER
27	F-1125	8	5/16-18 LOCK NUT
28	659-015W	1	CLUTCH STOP WELDMENT
29	F-1015-02	8	1/4-20 X 5/8" GR. 5
30	F-1158	8	1/4-20 LOCK NUTS
31	D-3729	2	TIRE, 18 X 8.5-8
32	F-1499	8	LUG NUT, 1/2 X 20
33	659-160W	1	BRACE WELDMENT
34	659-116P	2	HYDRO MOUNT BRACE
35	F-1759	2	1/2-13 X 1" BOLT
36	F-1652	2	5/16-18 X 6" BOLT
37	F-1005-05	2	1/2" STOVER LOCK NUT
38	659-120P	1	HYDRO BRACE
39	F-1544	4	5/16-18 X 3" BOLT
40	659-156P	2	FAN SHROUD
41	F-1009-03	2	3/8" FLAT WASHER
42	F-1005-03	1	3/8-16 LOCK NUT
43	E-6459	1	CLUTCH PIGTAIL
44	606-347P	1	15/32" I.D. WASHER
45	F-1492	2	5/16-3/8 RUE RING

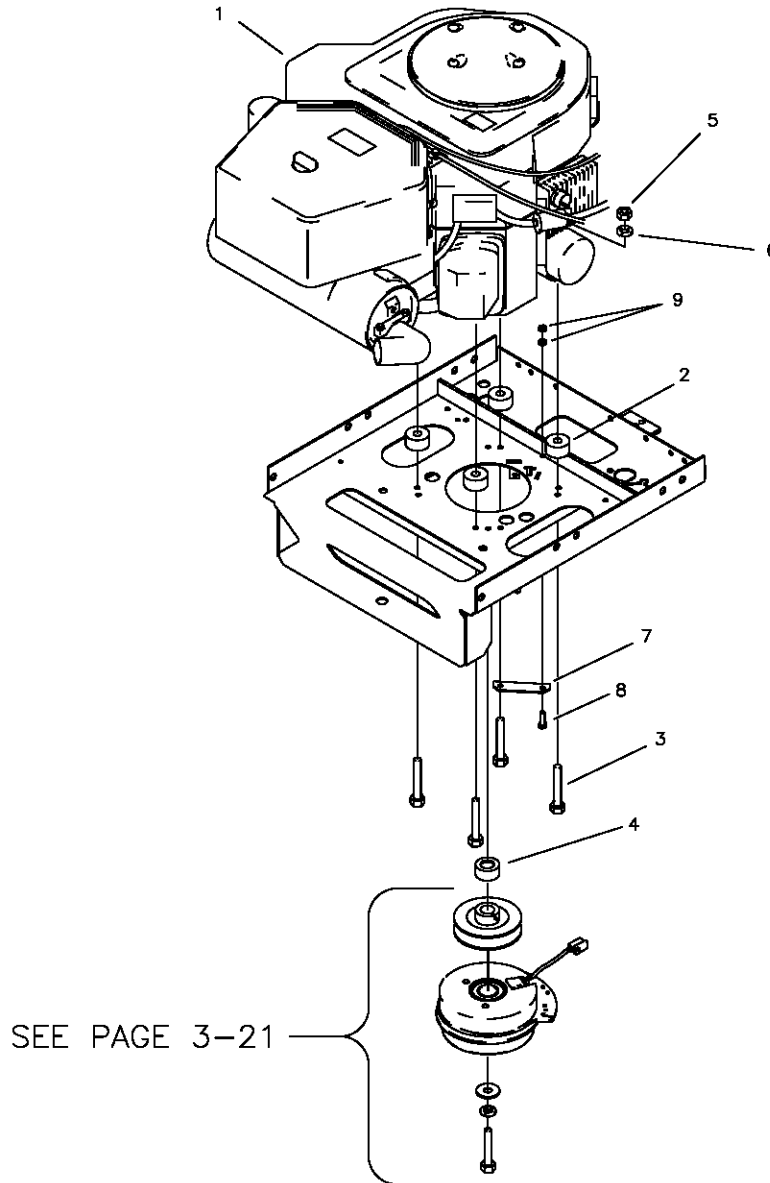
MOTOR AND TRANSMISSION ASSEMBLY & RELATED PARTS FOR JAZEE PRO SR365



REF. NO.	PART NO.	QTY.	DESCRIPTION
1	M-5375	1	22HP KAWASAKI ENGINE
-	M-5367	1	26HP BRIGGS ENGINE
-	M-5371	1	27HP KOHLER COURAGE ENGINE
2	E-6317	1	CLUTCH-BRAKE 26HP BRIGGS
-	E-6247	1	CLUTCH-BRAKE 22HP KAW. & 27HP KOHLER
3	D-3524	1	V-BELT-A71 KEVLAR
4	H-2589	1	OIL DRAIN 26HP BRIGGS & 27HP KOHLER
-	H-2590	1	OIL DRAIN 22HP KAWASAKI
5	F-1019-04	1	7/16 LOCK WASHER
6	F-1545	1	7/16-20 X 3" 22HP KAW. & 26HP BRIGGS
-	F-1904	1	7/16-20 X 2-1/2" 27HP KOHLER
7	621-113P	1	KEY, 1/4 SQ. X 1-1/4"
8	F-1546	2	5/16-18 X 3/4" BOLT
9	659-119P	2	FREE WHEEL ANCHOR
10	H-2235	1	CHOKE CABLE, 22HP KAWASAKI
-	H-2287	1	CHOKE CABLE, 26HP BRIGGS
-	H-2404	1	CHOKE CABLE, 27HP KOHLER
11	H-2610	1	THROTTLE CABLE
12	P-10077-11	1	DECAL, "CLEAN"
13	F-1228	1	SETSCREW, 1/4" X 1/4"
14	659-121P	2	REAR HYDRO SPACER
15	D-3726	1	MOTOR PULLEY, 26HP BRIGGS
-	659-154P	1	MOTOR PULLEY, 22HP KAW. & 27HP KOHLER
16	D-3788-01	1	TRANSAXLE ZT-2800 (RH)
17	D-3788-02	1	TRANSAXLE ZT-2800 (LH)
18	F-1009-01	4	1/4" FLAT WASHER
19	H-2607	1	MUFFLER 22HP KAWASAKI
-	H-2464	1	MUFFLER 26HP BRIGGS
-	H-2513	1	MUFFLER 27HP KOHLER
20	661-086P	2	FREEWHEEL CHAIN W/SPRING
21	659-174W	1	MOTOR MOUNT
22	H-2539	2	FAN BLADE REPLACEMENT
23	P-11384	2	DECAL, TIRE PRESSURE, 12 PSI
24	F-2007	1	3/8-16 X 12-1/2" BOLT
25	F-1009-05	4	1/2" FLAT WASHER
26	F-1009-02	14	5/16" FLAT WASHER
27	F-1125	8	5/16-18 LOCK NUT
28	659-015W	1	CLUTCH STOP WELDMENT
29	F-1015-02	8	1/4-20 X 5/8" GR. 5
30	F-1158	8	1/4-20 LOCK NUTS
31	D-3787	2	TIRE, 20"-12 X 10 (w/52" & 60" DECK)
-	D-3353	2	TIRE, 20"-10 X 10 (w/48" DECK)
32	F-1499	8	LUG NUT, 1/2 X 20
33	H-2535	4	HOSE CLAMP
34	F-1652	2	5/16-18 X 6" BOLT

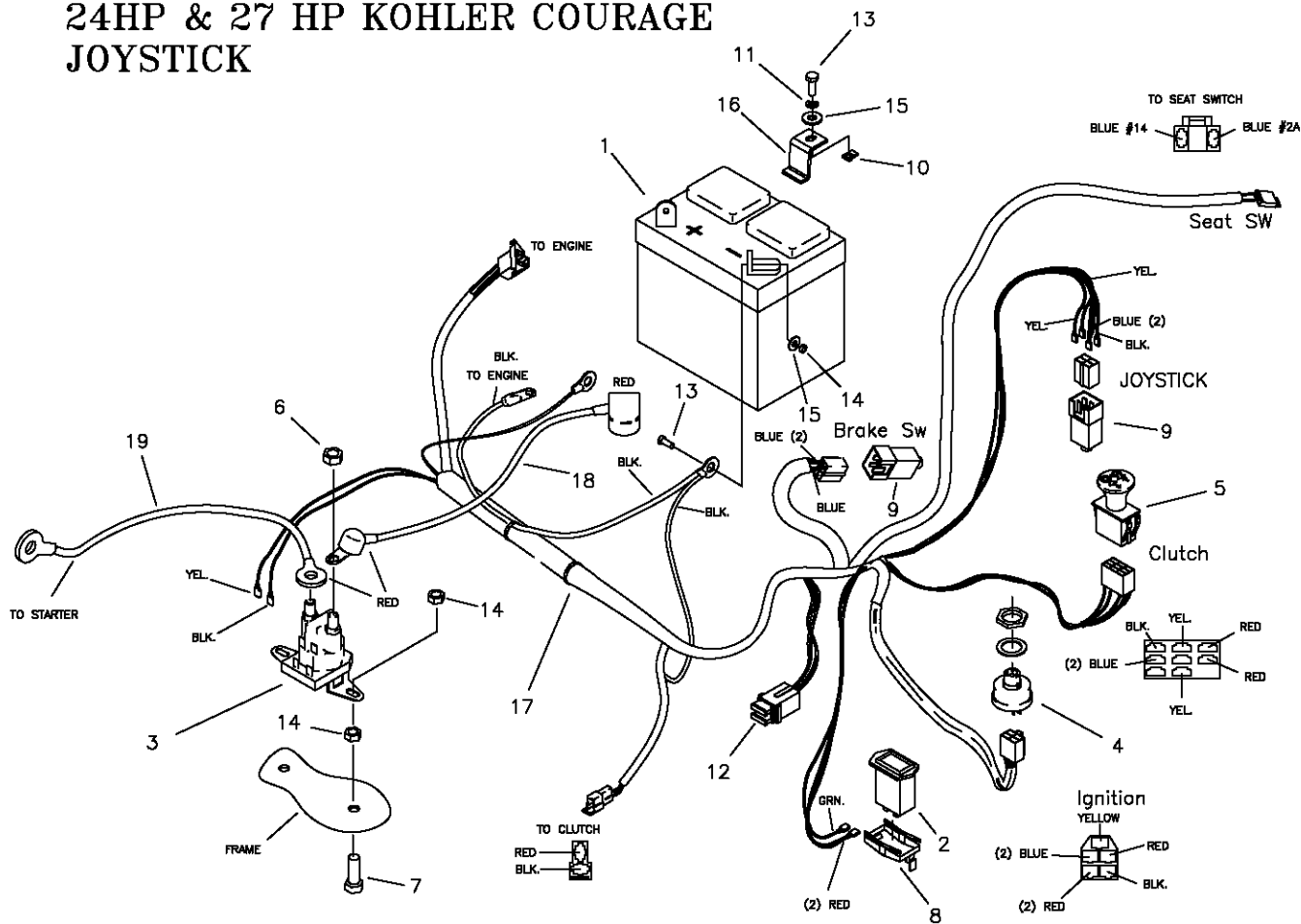
REF. NO.	PART NO.	QTY.	DESCRIPTION
35	F-1005-05	2	1/2" STOVER LOCK NUT
36	F-1492	2	RUE RING, 5/16-3/8 PIN
37	H-2549	2	HOSE, 5" LONG
38	659-173P	1	HYDRO BRACE
39	D-3791	2	SMALL HYDRO TANK
40	659-160W	1	BRACE WELDMENT
41	F-1759	2	1/2-13 X 1" BOLT
42	659-116P	2	HYDRO MOUNT BRACE
43	659-156P	2	FAN SHROUD
44	F-1544	4	5/16-18 X 3" BOLT
45	H-2567	1	OIL FILTER, JAZEE PRO
46	F-1009-03	2	3/8" FLAT WASHER
47	F-1005-03	1	3/8-16 LOCK NUT
48	H-2567	2	TRANSAXLE OIL FILTER
49	659-092P	2	WHEEL BACKING PLATE
50	E-6459	1	CLUTCH PIGTAIL
51	H-2517	2	VENT TUBE ADAPTER
52	606-347P	1	15/32" I.D. WASHER

**MOTOR AND TRANSMISSION
ASSEMBLY & RELATED PARTS
FOR JAZEE PRO SR365 (CON'T)**



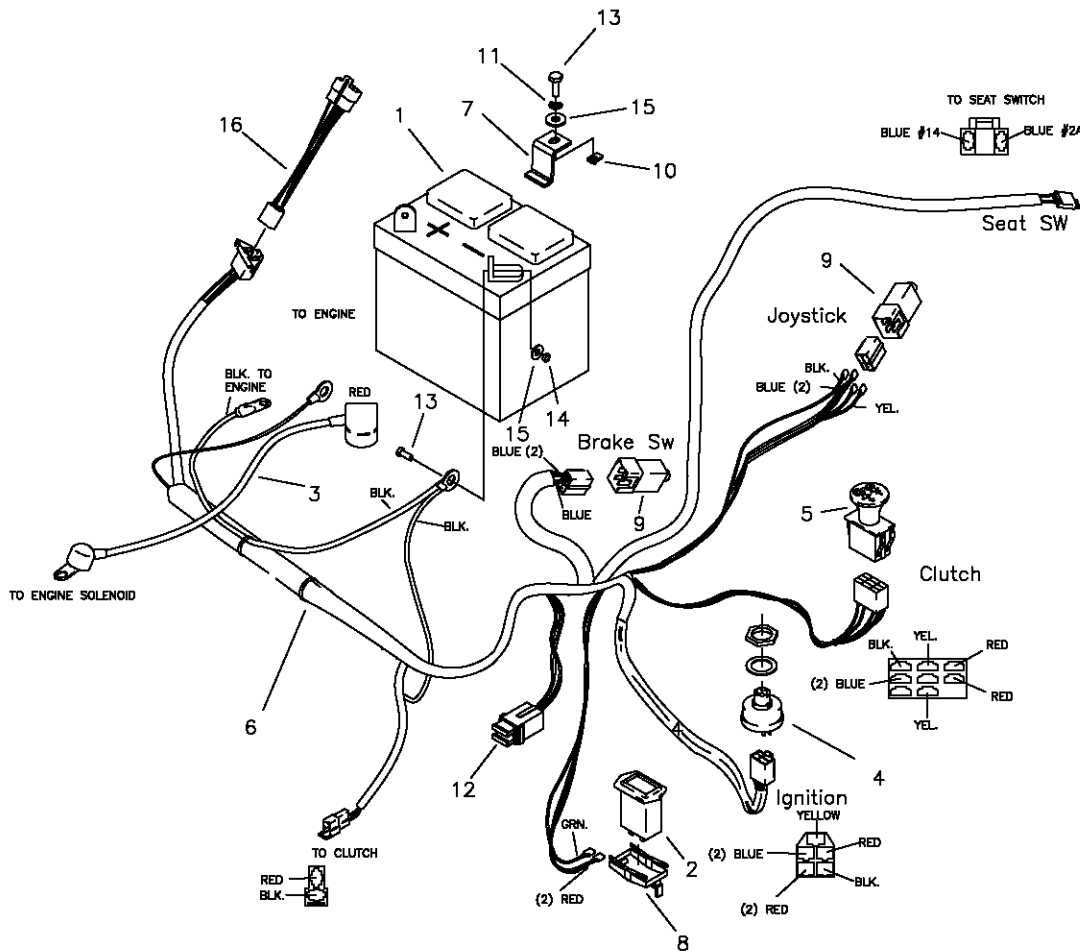
REF NO.	PART NO.	QTY.	DESCRIPTION
1	M-5375	1	22HP KAWASAKI ENGINE
-	M-5367	1	26HP BRIGGS ENGINE
-	M-5371	1	27HP KOHLER COURAGE ENGINE
2	F-2045	4	SPACER (22HP KAW. & 27HP KOHLER)
3	F-2055	4	3/8-16 x 1-3/4 BOLT,(22HP KAW. & 27HP KOHLER)
-	F-1015-17	4	5/16-18 x 1-3/2 BOLT, (26HP BRIGGS)
4	F-2043	1	SPACER (22HP KAW. & 27 HP KOHLER)
5	F-1125	4	5/8-18 STOVER NUT (26HP BRIGGS)
6	F-1019-02	4	5/16" LOCK WASHER (26HP BRIGGS)
7	647-085P	1	GROUND STRAP
8	F-1015-15	1	5/16-18 x 1" H.H.C.S.
9	F-1125	2	5/16-18 STOVER NUT

**E-6405 WIRE HARNESS
& RELATED PARTS
FOR 20 HP & 26 HP BRIGGS,
24HP & 27 HP KOHLER COURAGE
JOYSTICK**



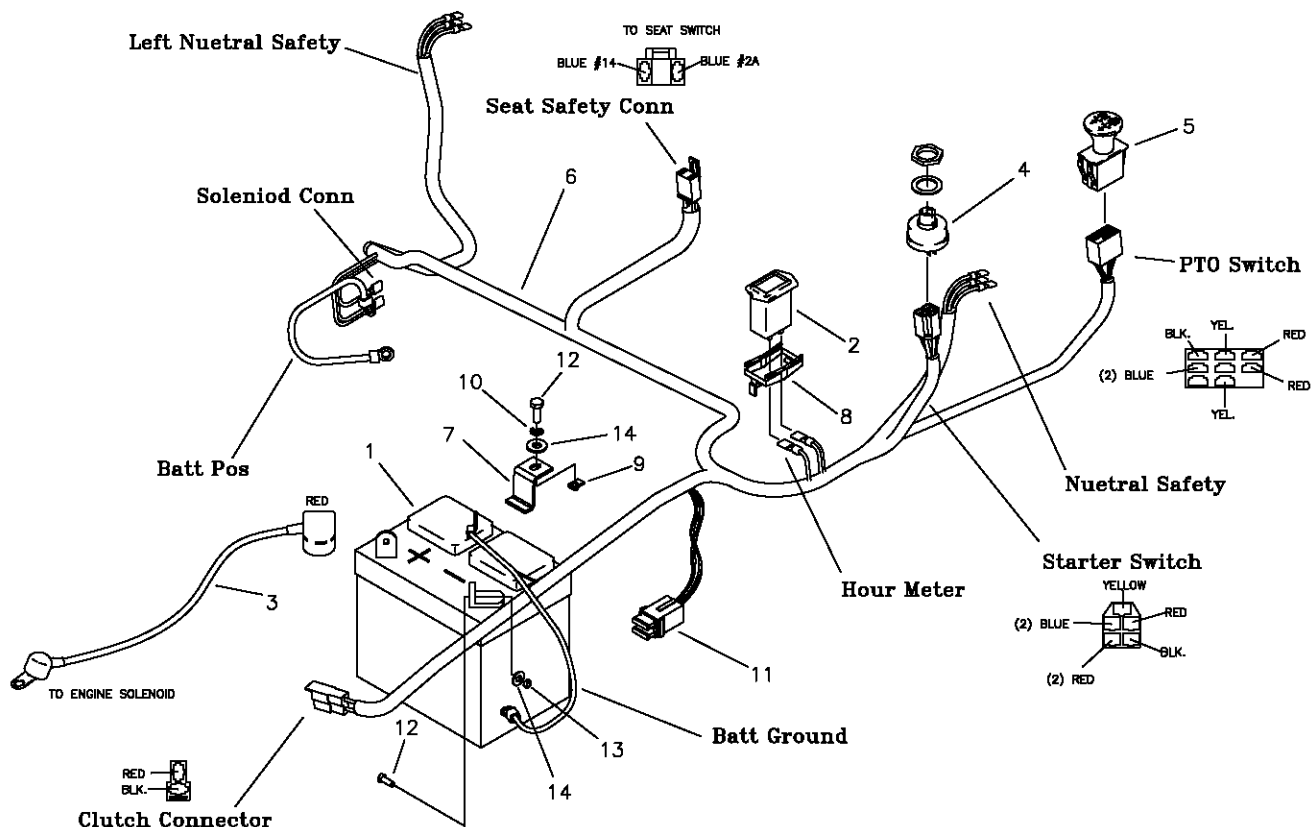
REF NO.	PART NO.	QTY.	DESCRIPTION
1	E-5812	1	BATTERY (20HP BRIGGS, 24HP KOHLER)
-	E-6271	1	BATTERY (26HP BRIGGS, 27HP KOHLER)
2	E-5878	1	HOUR METER
3	E-6054	1	SOLENOID
4	E-5873	1	START SWITCH
5	E-6403	1	CLUTCH SWITCH
6	F-1011-01	2	1/4-20 NUT
7	F-1015-05	2	1/4-20 X 1" GR. 5
8	E-6369	1	RETAINER CLIP
9	E-6297	2	BRAKE SWITCH
10	F-1858	1	1/4-20 U-NUT
11	F-1019-01	1	1/4" LOCK WASHER
12	E-6207	2	FUSE, #ATC-30
13	F-1538	3	1/4-20 X 3/4" GR. 5
14	F-1158	6	1/4-20 LOCK NUT
15	F-1009-01	5	1/4" FLAT WASHER
16	659-137P	1	BATTERY HOLD DOWN
17	E-6405	1	WIRE HARNESS
18	E-6418	1	CABLE, BATTERY TO SOLENOID
19	E-6419	1	CABLE, SOLENOID TO ENGINE
-NOT SHOWN-			
	E-6374	1	SEAT SWITCH
	E-6281	1	COVER (KEY SWITCH)

E-6415 WIRE HARNESS & RELATED PARTS FOR 22HP KAWASAKI JOYSTICK



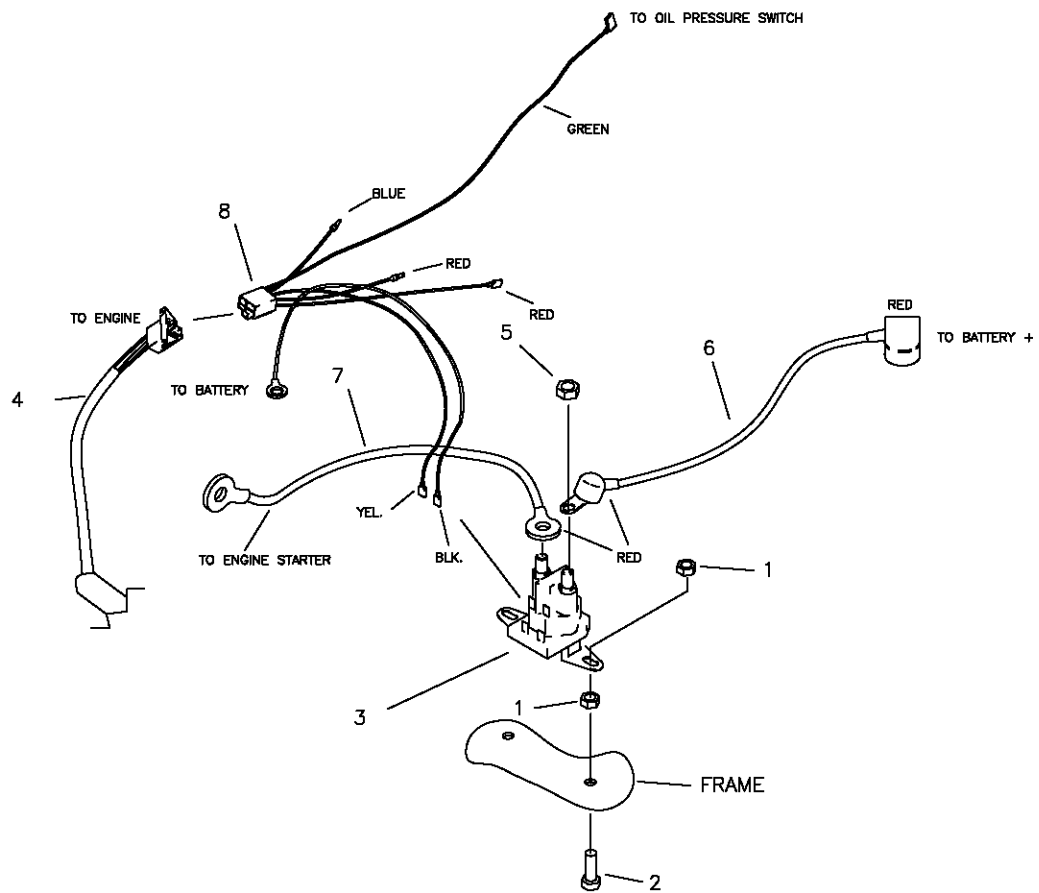
REF NO.	PART NO.	QTY.	DESCRIPTION
1	E-5812	1	BATTERY
2	E-5878	1	HOUR METER
3	E-6418	1	CABLE, BATTERY TO SOLENOID
4	E-5873	1	START SWITCH
5	E-6403	1	CLUTCH SWITCH
6	E-6415	1	WIRE HARNESS
7	659-137P	1	BATTERY HOLD DOWN
8	E-6369	1	RETAINER CLIP
9	E-6297	2	BRAKE SWITCH
10	F-1858	1	1/4-20 U-NUT
11	F-1019-01	1	1/4" LOCK WASHER
12	E-6207	2	FUSE, #ATC-30
13	F-1538	3	1/4-20 X 3/4" GR. 5
14	F-1158	2	1/4-20 LOCK NUT
15	F-1009-01	5	1/4" FLAT WASHER
16	E-6417	1	WIRE HARNESS ADAPTER
-NOT SHOWN-			
	E-6374	1	SEAT SWITCH
	E-6281	1	COVER (KEY SWITCH)

**E-6416 WIRE HARNESS
& RELATED PARTS
20HP & 26HP BRIGGS
22HP KAWASAKI
24HP & 27HP KOHLER
(TWINSTICK)**



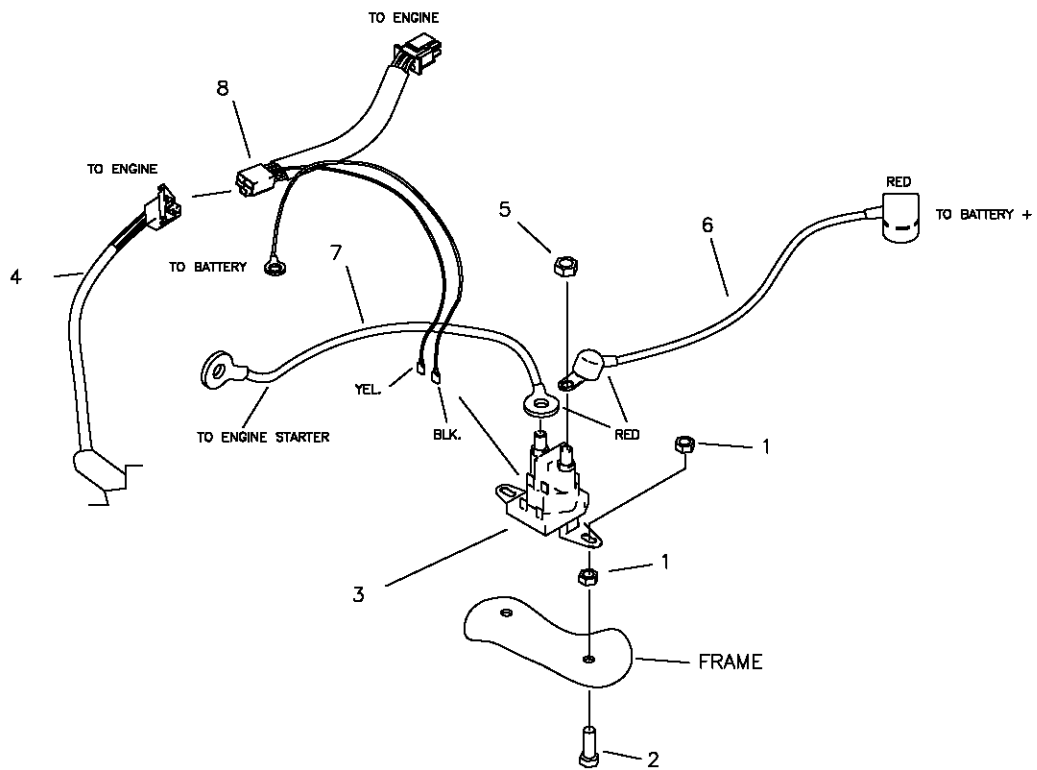
REF NO.	PART NO.	QTY.	DESCRIPTION
1	E-5812	1	BATTERY
2	E-5878	1	HOUR METER
3	E-6418	1	CABLE, BATTERY TO SOLENOID
4	E-5873	1	START SWITCH
5	E-6403	1	CLUTCH SWITCH
6	E-6416	1	WIRE HARNESS
7	659-137P	1	BATTERY HOLD DOWN
8	E-6369	1	RETAINER CLIP
9	F-1858	1	1/4-20 U-NUT
10	F-1019-01	1	1/4" LOCK WASHER
11	E-6207	2	FUSE, #ATC-30
12	F-1538	3	1/4-20 X 3/4" GR. 5
13	F-1158	2	1/4-20 LOCK NUT
14	F-1009-01	5	1/4" FLAT WASHER
-NOT SHOWN-			
	E-6374	1	SEAT SWITCH
	E-6281	1	COVER (KEY SWITCH)

E-6417 KAWASAKI ADAPTER
HARNESS & RELATED PARTS
22HP KAWASAKI



REF NO.	PART NO.	QTY.	DESCRIPTION
1	F-1158	4	1/4-20 LOCK NUT
2	F-1015-05	2	1/4-20 X 1" GR. 5
3	E-6054	1	SOLENOID
4	E-6416	1	WIRE HARNESS (TWINSTICK)
5	F-1011-01	2	1/4-20 NUT
6	E-6418	1	CABLE, BATTERY TO SOLENOID
7	E-6419	1	CABLE, SOLENOID TO ENGINE
8	E-6417	1	KAWASAKI HARNESS ADAPTER

**E-6436 ADAPTER
HARNESS & RELATED PARTS
20 HP BRIGGS
26 HP BRIGGS
27 HP KOHLER
TWINSTICKS**



REF NO.	PART NO.	QTY.	DESCRIPTION
1	F-1158	4	1/4-20 LOCK NUT
2	F-1015-05	2	1/4-20 X 1" GR. 5
3	E-6054	1	SOLENOID
4	E-6416	1	WIRE HARNESS (TWINSTICK)
5	F-1011-01	2	1/4-20 NUT
6	E-6418	1	CABLE, BATTERY TO SOLENOID
7	E-6419	1	CABLE, SOLENOID TO ENGINE
8	E-6436	1	ENGINE ADAPTER