

REPAIR PARTS MANUAL  
FOR

**COUNTRY  
CLIPPER®**



**SR1015**



# COUNTRY CLIPPER "CHARGER"

## ZERO TURN RADIUS MOWER TABLE OF CONTENTS

### PAGE.... CONTENTS

#### SECTION 1 – MOWER DECKS AND RELATED PARTS

- 1-1.... DOUBLE IDLER DECK ASSEMBLY
- 1-2.... DECK SPINDLE ASSEMBLY
- 1-3.... DOUBLE IDLER DRIVE BELT IDLER & RELATED PARTS
- 1-4.... LIFT HANDLE ASSEMBLY & RELATED PARTS
- 1-5.... LIFT ASSEMBLY & RELATED PARTS
- 1-6.... TRANSMISSION IDLERS & RELATED PARTS

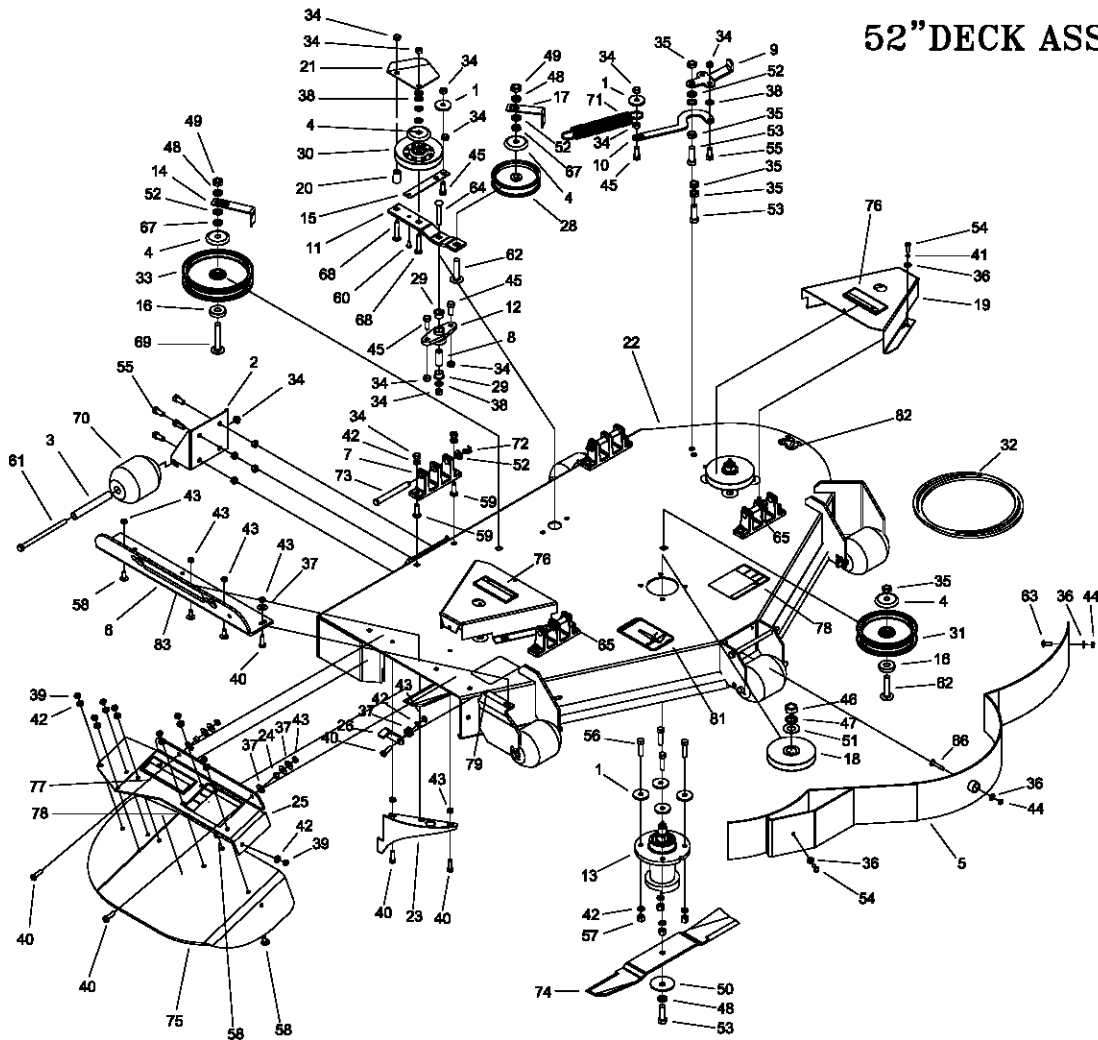
#### SECTION 2 –TRACTOR FRAME AND RELATED PARTS

- 2-7....CASTER WHEEL ASSEMBLY
- 2-8....FRAME SIDES & RELATED PARTS
- 2-9....FENDER ASSEMBLY
- 2-10....SEAT, FOOT DECK & RELATED PARTS
- 2-11....FRONT STEP ASSEMBLY

#### SECTION 3 –TRACTOR DRIVE AND RELATED PARTS

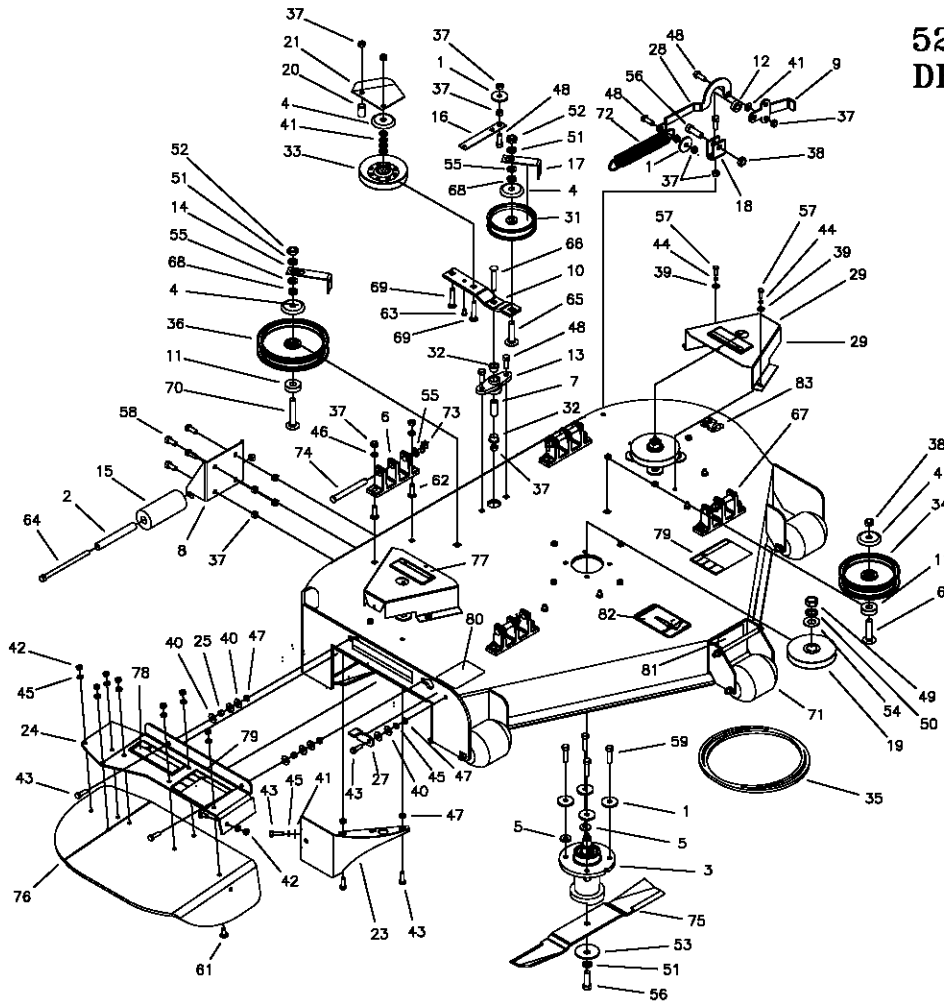
- 3-12...FUEL TANK ASSEMBLY
- 3-13...JOYSTICK STEERING CONTROL & RELATED PARTS
- 3-14...JOYSTICK STEERING CONTROL & RELATED PARTS (continued)
- 3-15...RIGHT HAND STEERING CONTROL (TWIN STICK)
- 3-16...LEFT HAND STEERING CONTROL (TWIN STICK)
- 3-17...PARKING BRAKE ASSEMBLY & RELATED PARTS
- 3-18...GEAR MOTOR WHEEL ASSEMBLY
- 3-19...MOTOR ASSEMBLY & RELATED PARTS
- 3-20...HIGH PRESSURE LINES & FITTINGS
- 3-21...OIL RETURN LINES & COOLER ASSEMBLY
- 3-22...E-6415 WIRE HARNESS & RELATED PARTS
- 3-23...E-6416 WIRE HARNESS & RELATED PARTS
- 3-24...E-6417 WIRE HARNESS & RELATED PARTS

# 52" DECK ASSEMBLY



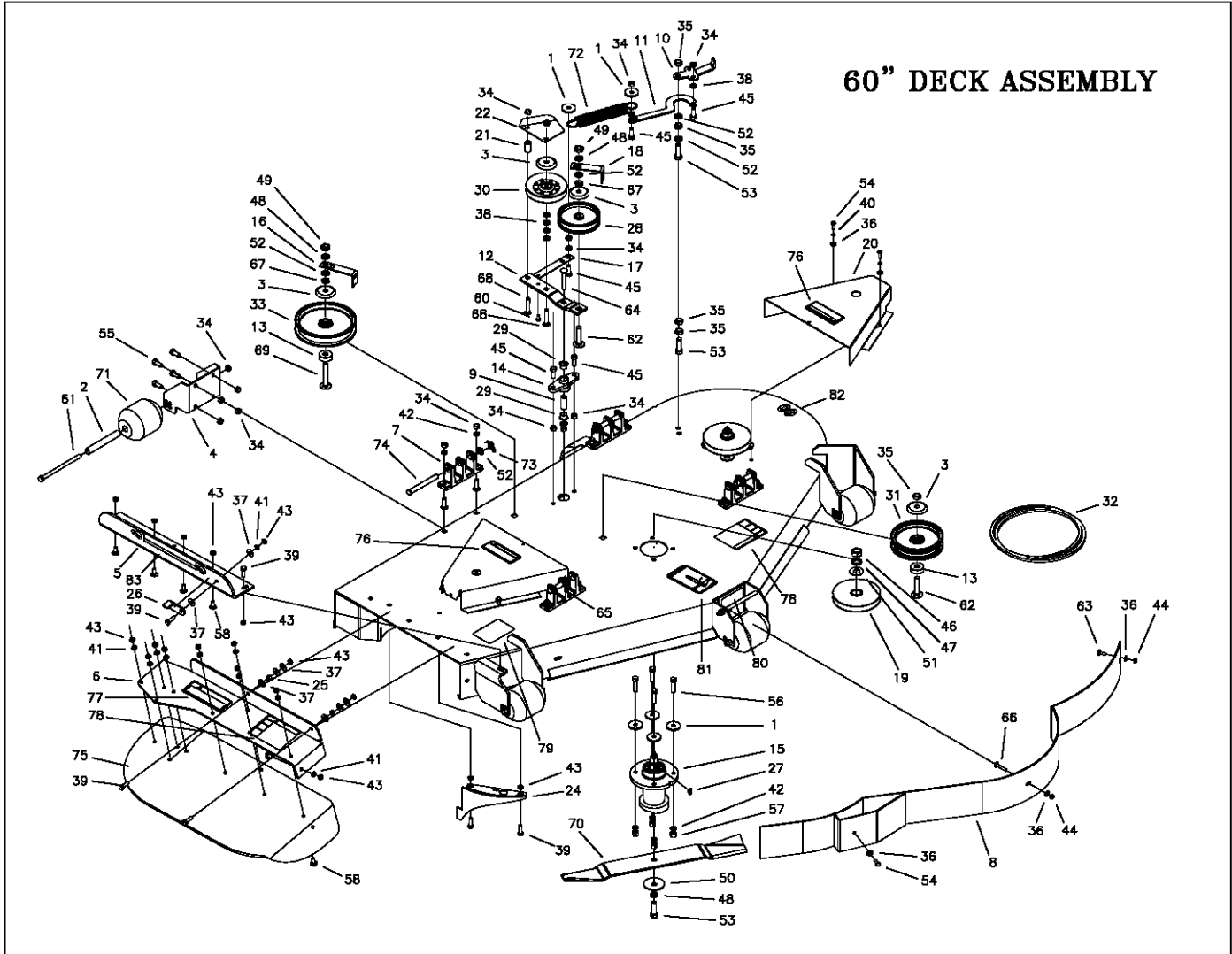
REF NO.	PART NO.	QTY.	DESCRIPTION	REF NO.	PART NO.	QTY.	DESCRIPTION
1	609-034P	14	SPINDLE SPACER WASHER	43	F-1125	9	5/16-18 STOVER NUT
2	609-182P	2	BRACKET REAR CENTER	44	F-1158	2	1/4-20 STOVER NUT
3	609-183P	5	BUSHING	45	F-1394	4	3/8-16 x 1" CAPSCREW
4	620-201P	4	WASHER, BEARING CAP	46	F-1461	3	3/4-16 JAM NUT
5	629-229W	1	52" DUST BAFFLE	47	F-1463	3	3/4 LOCKWASHER
6	637-072P	1	OUTLET STIFFENER	48	F-1464	5	1/2" LOCKWASHER
7	643-016W	4	HANGER WELDMENT	49	F-1489	2	1/2-13 Hex Nut
8	659-085P	1	MOUNTING PIN	50	F-1507	3	CUPPED WASHER, 1/2"
9	660-030P	1	BELT TIGHTNER HANDLE	51	F-1510	3	3/4 FLAT WASHER
10	660-031P	1	BELT TIGHTNER ARM	52	F-1521	8	1/2" WASHER
11	660-036P	1	IDLER ARM	53	F-1526	5	1/2-13 x 1-1/2" CAPSCREW
12	660-039P	1	DOUBLE IDLER MOUNT	54	F-1538	5	1/4-20 x 3/4" CAPSCREW
13	660-045A	3	DECK SPINDLE ASSEMBLY	55	F-1558	9	3/8-16 x 7/8" CAPSCREW
14	660-060P	1	BELT KEEPER	56	F-1572	12	3/8-24 x 1.5" CAPSCREW
15	660-081P	1	EXTENSION FOR SPRING	57	F-1573	12	3/8-24 LOCKNUT
16	660-082P	2	SPACER	58	F-1671	11	5/16-18 x 3/4" CARRIAGE BOLT
17	660-084P	1	BELT KEEPER, 'A' SECTION	59	F-1672	8	3/8-16 x 1-1/4" CARRIAGE BOLT
18	668-013P	2	PULLEY, 52"	60	F-1733	1	1/4" x 1/2" DRIVE SCREW
19	668-016P	3	PULLEY COVER	61	F-1741	6	3/8-16 x 6" CAPSCREW
20	668-021P	1	SPACER, BELT GUARD	62	F-1822	2	1/2-13 X 2-1/4" CARRIAGE BOLT
21	668-029P	1	BELT GUARD	63	F-1823	1	CARRIAGE BOLT, 1/4 X 3/4"
22	668J-003W	1	52" HEAVY DECK WELDMENT	64	F-1865	1	3/8-16 x 2-1/2" CARRIAGE BOLT
23	686-006W	1	SPLITTER BAFFLE	65	F-1889	2	1/2 x 2-5/8" CLEVIS PIN
24	686-036P	2	SPACER	66	F-1935	1	CARRIAGE BOLT, 1/4 X 1-1/2"
25	686-077P	1	CHUTE FRAME	67	F-1966	2	1/2-13 THIN NYLOC NUT
26	686-079P	1	LATCH	68	F-1976	2	3/8-16 x 1-1/2" CARRIAGE BOLT
27	D-1004-02	3	KEY, WOODRUFF, 1/4 X 3/4	69	F-2047	1	1/2-13 X 2-1/4" CARRIAGE BOLT
28	D-3338	1	PULLEY FLAT IDLER 1/2" BORE 4"	70	H-1948	5	Roller, 3-3/4 DIA. x 4-13/16L
29	D-3730	2	FLANGED BUSHING 5/8" BORE	71	H-2092	1	1-1/4" x 5" EXTENTION SPRING
30	D-3758	1	PULLEY V-IDLER 4.48 O.D. 3/8 HOLE	72	H-2239	4	1/2" RUE RING
31	D-3774	1	IDLER PULLEY 5" X 2"	73	H-2240	2	1/2" x 4-1/2" CLEVIS PIN
32	D-3776	1	BELT, B-180	74	H-2246	3	18-3/8 HIGH LIFT BLADE
33	D-3815	1	IDLER PULLEY 5" X 2"	75	H-2599	1	RUBBER CHUTE
34	F-1005-03	32	3/8-16 STOVER NUT	76	P-10935	2	Decal, WARNING
35	F-1005-05	5	1/2-13 STOVER NUT	77	P-10937	1	DECAL "WARNING TO AVOID SERIOUS"
36	F-1009-01	7	1/4" FLAT WASHER	78	P-10941	2	DECAL "DANGER ROTATING BLADES"
37	F-1009-02	9	5/16" FLAT WASHER	79	P-10947	1	DECAL "GREASE DECK SPINDLES"
38	F-1009-03	6	3/8" FLAT WASHER	80	P-11413	1	DECAL, HOIST POINT
39	F-1011-02	8	5/16-18 NUT	81	P-11932	1	DECAL, JAZEE DECK BELT ROUTING
40	F-1015-15	6	5/16-18 x 1" CAPSCREW	82	P-11951	1	DECAL, DECK SIZE, 52
41	F-1019-01	4	1/4" LOCKWASHER	83	P-12496	1	DECAL, MISSING CHUTE
42	F-1019-03	29	3/8" LOCKWASHER				

52" TRI-PORT DECK ASSEMBLY



REF NO.	PART NO.	QTY.	DESCRIPTION	REF NO.	PART NO.	QTY.	DESCRIPTION
1	609-034P	14	SPINDLE SPACER WASHER	43	F-1015-15	10	5/16-18 x 1" CAPSCREW
2	609-183P	5	BUSHING	44	F-1019-01	4	1/4" LOCKWASHER
3	609F-019A	3	DECK SPINDLE ASSEMBLY	45	F-1019-02	10	5/16" LOCKWASHER
4	620-201P	4	WASHER, BEARING CAP	46	F-1019-03	20	3/8" LOCKWASHER
5	629-237P	6	WASHER, .406 ID X 1 OD X 10 GA	47	F-1125	19	5/16-18 STOVER NUT
6	643-016W	4	HANGER WELDMENT	48	F-1394	6	3/8-16 x 1" CAPSCREW
7	659-085P	1	MOUNTING PIN	49	F-1461	3	3/4-16 JAM NUT
8	659-139P	2	SCALPER BRACKET	50	F-1463	3	3/4 LOCKWASHER
9	660-030P	1	BELT TIGHTNER HANDLE	51	F-1464	5	1/2" LOCKWASHER
10	660-036P	1	IDLER ARM	52	F-1489	2	1/2-13 HEX NUT
11	660-037P	2	3/8" SPACER	53	F-1507	3	CUPPED WASHER, 1/2"
12	660-038P	1	3/8" SPACER	54	F-1510	3	3/4 FLAT WASHER
13	660-039P	1	DOUBLE IDLER MOUNT	55	F-1521	6	1/2" WASHER
14	660-060P	1	BELT KEEPER	56	F-1526	4	1/2-13 x1-1/2" CAPSCREW
15	660-076P	2	ROLLER	57	F-1538	14	1/4-20 x 3/4" CAPSCREW
16	660-081P	1	EXTENSION FOR SPRING	58	F-1558	8	3/8-16 x 7/8" CAPSCREW
17	660-084P	1	BELT KEEPER, 'A' SECTION	59	F-1572	12	3/8-24 x 1.5" CAPSCREW
18	661-015P	1	SHACKLE	60	F-1573	12	3/8-24 LOCKNUT
19	668-013P	3	PULLEY, 52"	61	F-1671	8	5/16-18 x 3/4" CARRIAGE BOLT
20	668-021P	1	SPACER, BELT GUARD	62	F-1672	8	3/8-16 x 1-1/4" CARRIAGE BOLT
21	668-029P	1	BELT GUARD	63	F-1733	1	1/4" x 1/2" DRIVE SCREW
22	686-006W	2	SPLITTER BAFFLE	64	F-1741	6	3/8-16 x 6" CAPSCREW
23	686-018W	1	BAFFLE, DISCHARGE WLDT	65	F-1822	2	1/2-13 x 2-1/4" CARRIAGE BOLT
24	686-029P	1	CHUTE FRAME	66	F-1865	1	3/8-16 x 2-1/2" CARRIAGE BOLT
25	686-036P	2	SPACER	67	F-1889	2	1/2 x 2-5/8" CLEVIS PIN
26	686-059W	3	8" TUBE WLDT.	68	F-1966	2	1/2-13 THIN NYLOC NUT
27	686-079P	1	LATCH	69	F-1976	2	3/8-16 x 1-1/2" CARRIAGE BOLT
28	686-081P	1	BELT TENSIONER	70	F-2047	1	1/2-13 x 2-1/4" CARRIAGE BOLT
29	686-082P	2	PULLEY COVER	71	H-1948	3	ROLLER, 3-3/4 DIA. x 4-13/16L
30	686J-003W	1	52" CHARGER TRIPORT DECK WLDT	72	H-2092	1	1-1/4" x 5" EXTENTION SPRING
31	D-3338	1	PULLEY FLAT IDLER 1/2" BORE 4"	73	H-2239	4	1/2" RUE RING
32	D-3730	2	FLANGED BUSHING 5/8" BORE	74	H-2240	2	1/2" x 4-1/2" CLEVIS PIN
33	D-3758	1	PULLEY V-IDLER 4.48 O.D. 3/8 HOLE	75	H-2246	3	18-3/8 HIGH LIFT BLADE
34	D-3774	1	IDLER PULLEY 5" X 2"	76	H-2599	1	RUBBER CHUTE
35	D-3776	1	BELT, B-180	77	P-10935	2	DECAL, WARNING
36	D-3815	1	IDLER PULLEY 5" X 2"	78	P-10937	1	DECAL "WARNING TO AVOID SERIOUS"
37	F-1005-03	33	3/8-16 STOVER NUT	79	P-10941	2	DECAL "DANGER ROTATING BLADES"
38	F-1005-05	2	1/2-13 STOVER NUT	80	P-10947	1	DECAL "GREASE DECK SPINDLES"
39	F-1009-01	4	1/4" FLAT WASHER	81	P-11413	1	DECAL, HOIST POINT
40	F-1009-02	8	5/16" FLAT WASHER	82	P-11932	1	DECAL, JAZEE DECK BELT ROUTING
41	F-1009-03	7	3/8" FLAT WASHER	83	P-11951	1	DECAL, DECK SIZE, 52
42	F-1011-02	8	5/16-18 Nut	84	P-12496	1	DECAL, MISSING CHUTE

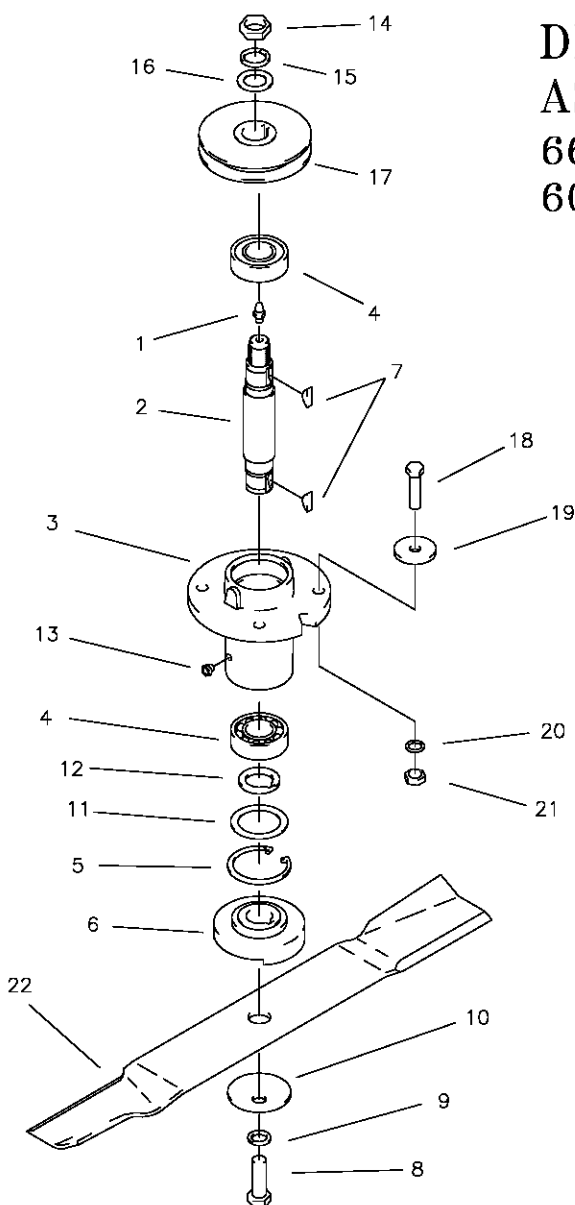
60" DECK ASSEMBLY



REF NO.	PART NO.	QTY.	DESCRIPTION	REF NO.	PART NO.	QTY.	DESCRIPTION
1	609-034P	14	SPINDLE SPACER WASHER	43	F-1125	19	5/16-18 STOVER NUT
2	609-183P	5	BUSHING	44	F-1158	2	1/4-20 STOVER NUT
3	620-201P	4	WASHER, BEARING CAP	45	F-1394	5	3/8-16 x 1" CAPSCREW
4	637-006P	2	SCALPER BRACKET	46	F-1461	3	3/4-16 JAM NUT
5	637-072P	1	OUTLET STIFFENER	47	F-1463	3	3/4 LOCKWASHER
6	637-073P	1	CHUTE FRAME	48	F-1464	5	1/2" LOCKWASHER
7	643-018W	4	HANGER WELDMENT	49	F-1489	2	1/2-13 HEX NUT
8	643-047P	1	DUST BAFFLE	50	F-1507	3	CUPPED WASHER, 1/2"
9	659-085P	1	MOUNTING PIN	51	F-1510	3	3/4 FLAT WASHER
10	660-030P	1	BELT TIGHTNER HANDLE	52	F-1521	8	1/2" WASHER
11	660-031P	1	BELT TIGHTNER ARM	53	F-1526	5	1/2-13 x 1-1/2" CAPSCREW
12	660-036P	1	IDLER ARM	54	F-1538	5	1/4-20 x 3/4" CAPSCREW
13	660-037P	2	3/8" SPACER	55	F-1558	8	3/8-16 x 7/8" CAPSCREW
14	660-039P	1	DOUBLE IDLER MOUNT	56	F-1572	12	3/8-24 x 1.5" CAPSCREW
15	660-045A	3	DECK SPINDLE ASSEMBLY	57	F-1573	12	3/8-24 LOCKNUT
16	660-060P	1	BELT KEEPER	58	F-1671	13	5/16-18 x 3/4" CARRIAGE BOLT
17	660-081P	1	EXTENSION FOR SPRING	59	F-1672	8	3/8-16 x 1-1/4" CARRIAGE BOLT
18	660-084P	1	BELT KEEPER, 'A' SECTION	60	F-1733	1	1/4" x 1/2" DRIVE SCREW
19	668-012P	3	PULLEY, 60"	61	F-1741	6	3/8-16 x 6" CAPSCREW
20	668-017P	2	PULLEY COVER	62	F-1822	2	1/2-13 X 2-1/4" CARRIAGE BOLT
21	668-021P	1	SPACER, BELT GUARD	63	F-1823	1	CARRIAGE BOLT, 1/4 X 3/4"
22	668-029P	1	BELT GUARD	64	F-1865	1	3/8-16 x 2-1/2" CARRIAGE BOLT
23	668K-003W	1	80" HEAVY DECK WELDMENT	65	F-1889	2	1/2 x 2-5/8" CLEVIS PIN
24	686-006W	2	SPLITTER BAFFLE	66	F-1935	1	CARRIAGE BOLT, 1/4 X 1-1/2"
25	686-036P	2	SPACER	67	F-1966	2	1/2-13 THIN NYLOC NUT
26	686-079P	1	LATCH	68	F-1976	2	3/8-16 x 1-1/2" CARRIAGE BOLT
27	D-1004-02	3	KEY, WOODRUFF, 1/4 X 3/4	69	F-2047	1	1/2-13 X 2-1/4" CARRIAGE BOLT
28	D-3338	1	PULLEY FLAT IDLER 1/2" BORE 4"	70	H-1708	3	60" HIGH LIFT BLADE
29	D-3730	2	FLANGED BUSHING 5/8" BORE	71	H-1948	5	Roller, 3-3/4 DIA. x 4-13/16L
30	D-3758	1	PULLEY V-IDLER 4.48 O.D. 3/8 HOLE	72	H-2092	1	1-1/4" x 5" EXTENSION SPRING
31	D-3774	1	IDLER PULLEY 5" X 2"	73	H-2239	4	1/2" RUE RING
32	D-3776	1	BELT, B-180	74	H-2240	2	1/2" x 4-1/2" CLEVIS PIN
33	D-3815	1	IDLER PULLEY 5" X 2"	75	H-2613	1	RUBBER CHUTE
34	F-1005-03	33	3/8-16 STOVER NUT	76	P-10935	2	DECAL, WARNING
35	F-1005-05	5	1/2-13 STOVER NUT	77	P-10937	1	DECAL "WARNING TO AVOID SERIOUS"
36	F-1009-01	7	1/4" FLAT WASHER	78	P-10941	2	DECAL "DANGER ROTATING BLADES"
37	F-1009-02	8	5/16" FLAT WASHER	79	P-10947	1	DECAL "GREASE DECK SPINDLES"
38	F-1009-03	6	3/8" FLAT WASHER	80	P-11413	1	DECAL, HOIST POINT
39	F-1015-15	6	5/16-18 x 1" CAPSCREW	81	P-11932	1	DECAL, JAZEE DECK BELT ROUTING
40	F-1019-01	4	1/4" LOCKWASHER	82	P-11952	1	DECAL, DECK SIZE, 52
41	F-1019-02	10	5/16" LOCKWASHER	83	P-12496	1	DECAL, MISSING CHUTE
42	F-1019-03	20	3/8" LOCKWASHER				

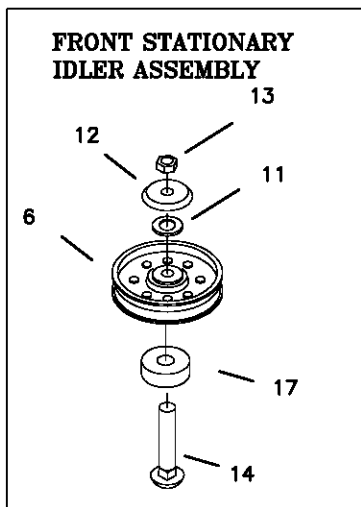
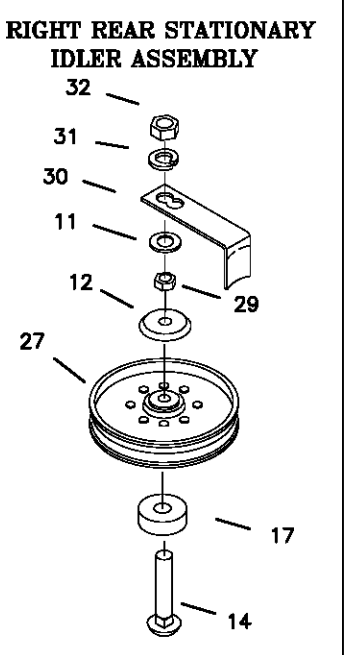
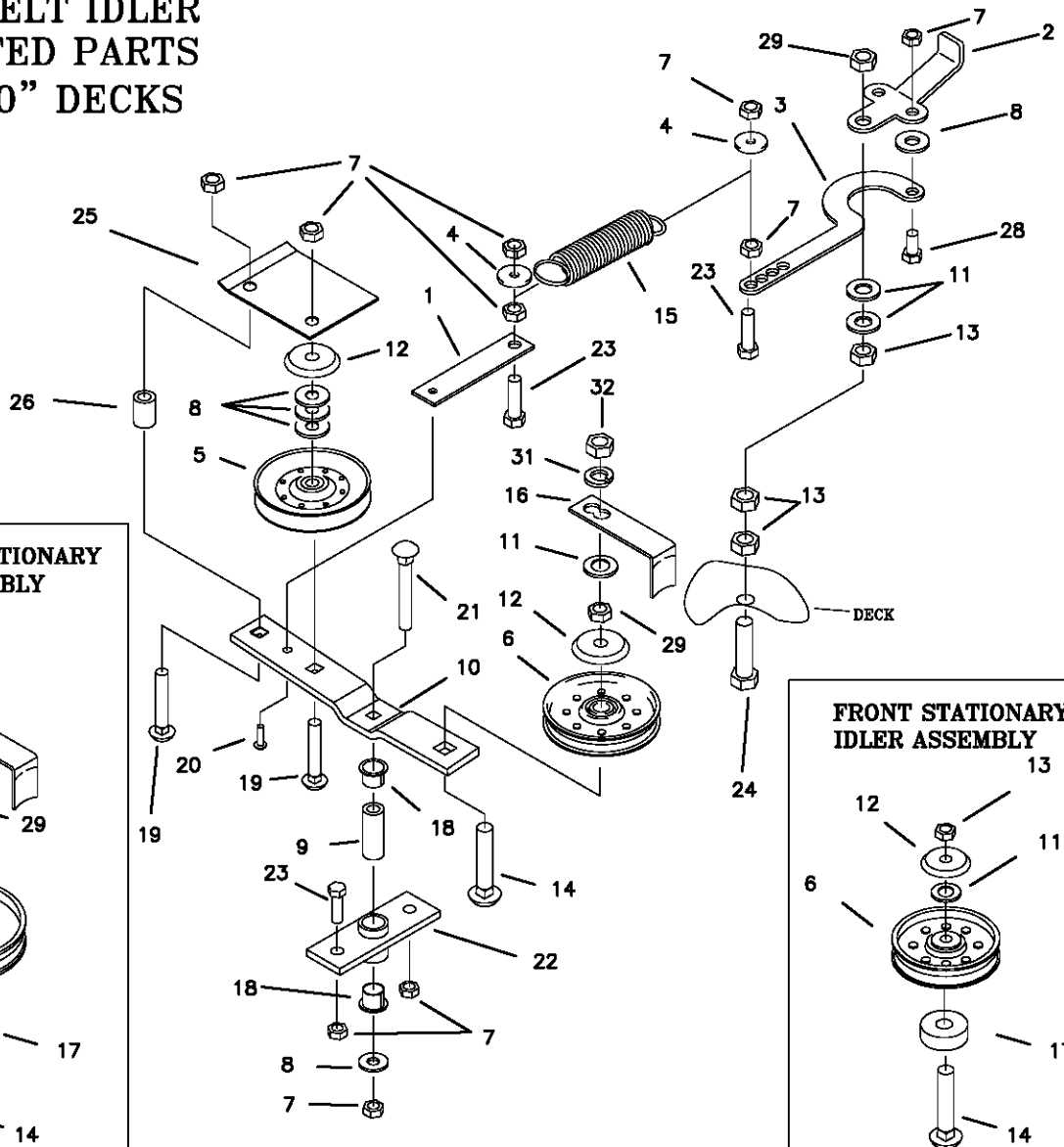
# DECK SPINDLE ASSEMBLY

660-045P  
609F-019A



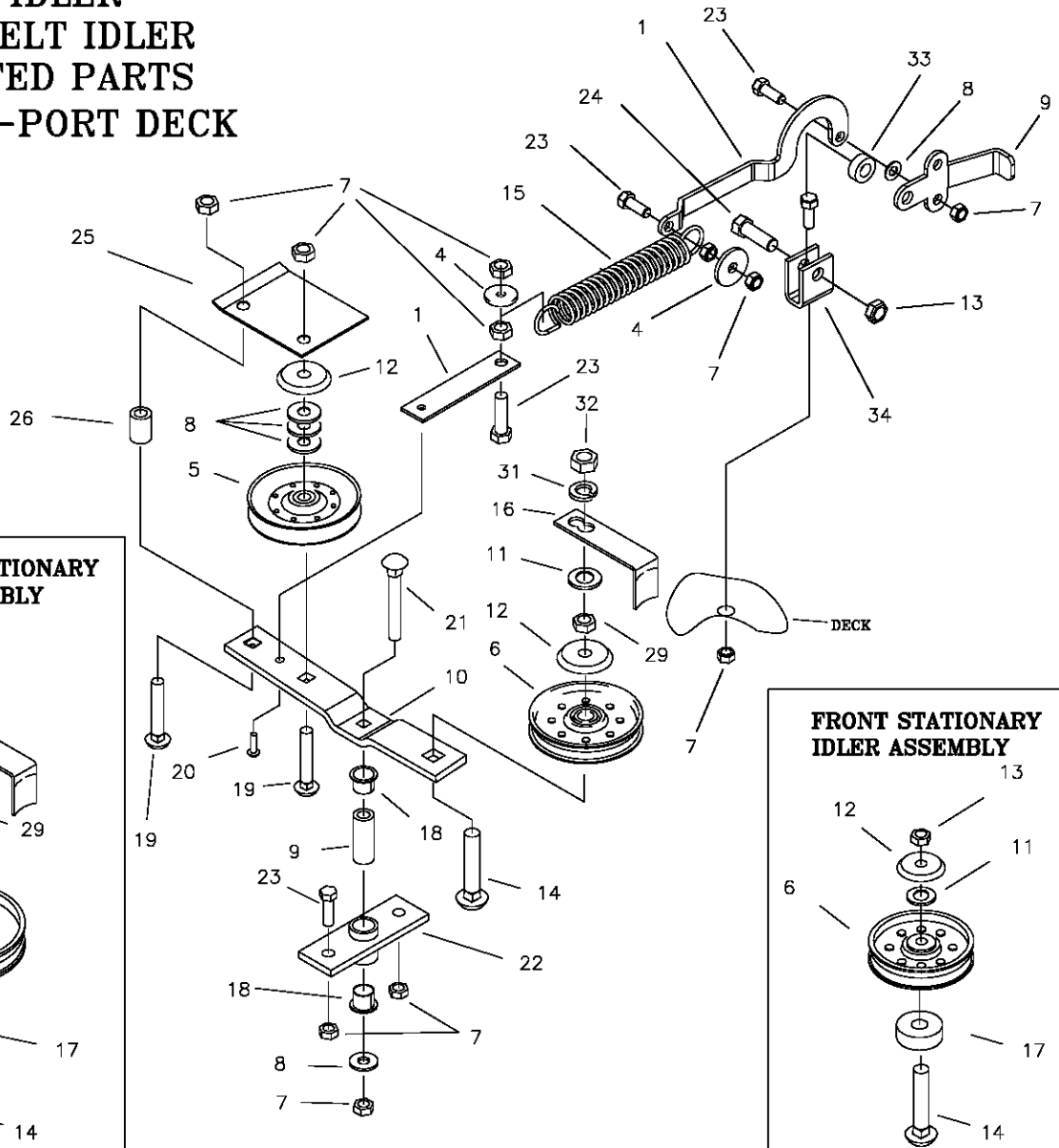
REF NO.	PART NO.	QTY.	DESCRIPTION	REF NO.	PART NO.	QTY.	DESCRIPTION
1	H-1056	1	GREASE FITTING	17	668-013P	-	SPINDLE PULLEY, 52"
2	609-162P	1	SPINDLE SHAFT	-	668-012P	-	SPINDLE PULLEY, 60"
3	660-028P	1	SPINDLE HOUSING (660-045A)	18	F-1572	4	3/8-24 X 1 1/2" HHCS GR. 5
-	609-223P	1	SPINDLE HOUSING (609F-019A)	19	609-034P	4	SPINDLE SPACER REINFORCEMENT
4	D-3058	2	BEARING, #6205-2RS	20	F-1019-03	4	3/8" LOCK WASHER
5	H-1893	1	SNAP RING INT. 52MM	21	F-1573	4	3/8-24 LOCKNUT
6	609-152P	1	BLADE SPACER	22	H-2246	-	BLADE, HIGH L, 18 3/8" CUT 52"
7	D-1004-02	2	KEY, WOODRUF, 1/4 X 3/4		H-1708	-	BLADE, HIGH L, 21" CUT 60"
8	F-1526	1	1/2-13 X 1 1/2" HHCS GR. 5	OPTIONAL BLADES			
9	F-1464	1	1/2" LOCK WASHER				
10	F-1507	1	WASHER, 1/2" CUPPED				
11	609-151P	1	WASHER, SEAL				
12	609-073P	1	ARBOR SPACER				
13	H-2066	1	GREASE VENT 5 LBS.				
14	F-1461	1	3/4-16 NUT, HEX JAM				
15	F-1463	1	3/4" LOCK WASHER				
16	F-1510	1	3/4" WASHER, FLAT STD.				
					H-2387	-	BLADE, LOW L, 18 3/8" CUT, 52"
					H-1667	-	BLADE, LOW L, 21" CUT, 60"
					H-2251	-	BLADE, GATOR, 18 3/8" CUT 52"
					H-2122	-	BLADE, GATOR, 21" CUT 60"

**DOUBLE IDLER  
DRIVE BELT IDLER  
& RELATED PARTS  
52" & 60" DECKS**

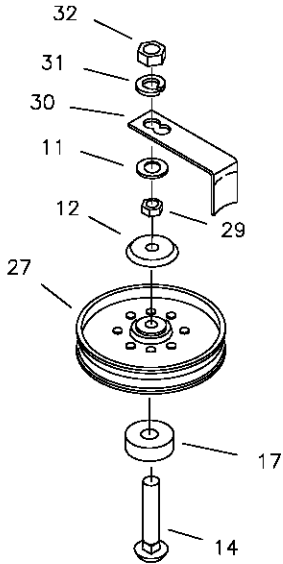


REF NO.	PART NO.	QTY.	DESCRIPTION	REF NO.	PART NO.	QTY.	DESCRIPTION
1	660-081P	1	EXTENSION FOR SPRING	21	F-1865	1	3/8-16 X 2-1/2" CARRIAGE BOLT
2	660-030P	1	HANDLE, BELT TIGHTENER	22	660-039P	1	MOUNT, DOUBLE IDLER
3	660-031P	1	ARM, BELT TIGHTENER	23	F-1394	5	3/8-16 X 1" GR. 5
4	609-034P	2	SPINDLE SPACER REINFORCEMENT	24	F-1526	4	1/2-13 X 1-1/2" GR. 5
5	D-3758	1	"V" IDLER PULLEY	25	668-022P	1	BELT GUARD
6	D-3338	2	IDLER PULLEY	26	668-021P	1	SPACER, BELT GUARD
7	F-1005-03	14	3/8 LOCK NUT	27	D-3815	1	5" IDLER PULLEY
8	F-1009-03	5	3/8 FLAT WASHER	28	F-1558	1	3/8-16 X 7/8 GR. 5
9	659-085P	1	MOUNTING PIN	29	F-1966	4	1/2-13 X 1-1/2" THIN NYLOC NUT
10	660-036P	1	IDLER ARM	30	660-060P	1	BELT KEEPER
11	F-1521	5	1/2" FLAT WASHER	31	F-1464	2	1/2" LOCK WASHER
12	620-201P	4	BEARING CAP	32	F-1489	2	1/2" THIN NUT
13	F-1005-05	6	1/2" LOCK NUT				
14	F-1822	3	1/2-13 X 2-1/4" GR. 5				
15	H-2092	1	SPRING				
16	660-084P	1	BELT KEEPER				
17	660-037P	1	1/2" THICK SPACER (60" DECK)				
-	660-082P	1	3/8" THICK SPACER (52" DECK)				
18	D-3730	2	BUSHING, TEFLON COATED				
19	F-1976	2	3/8-16 X 1-3/4" CARRIAGE BOLT				
20	F-1733	1	1/4" DRIVE STUD				

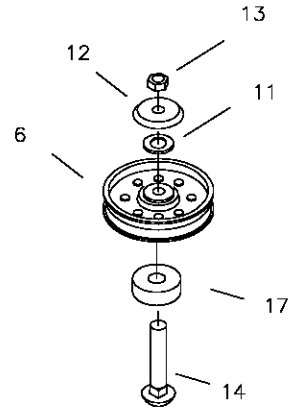
**DOUBLE IDLER  
DRIVE BELT IDLER  
& RELATED PARTS  
52" TRI-PORT DECK**



**RIGHT REAR STATIONARY  
IDLER ASSEMBLY**



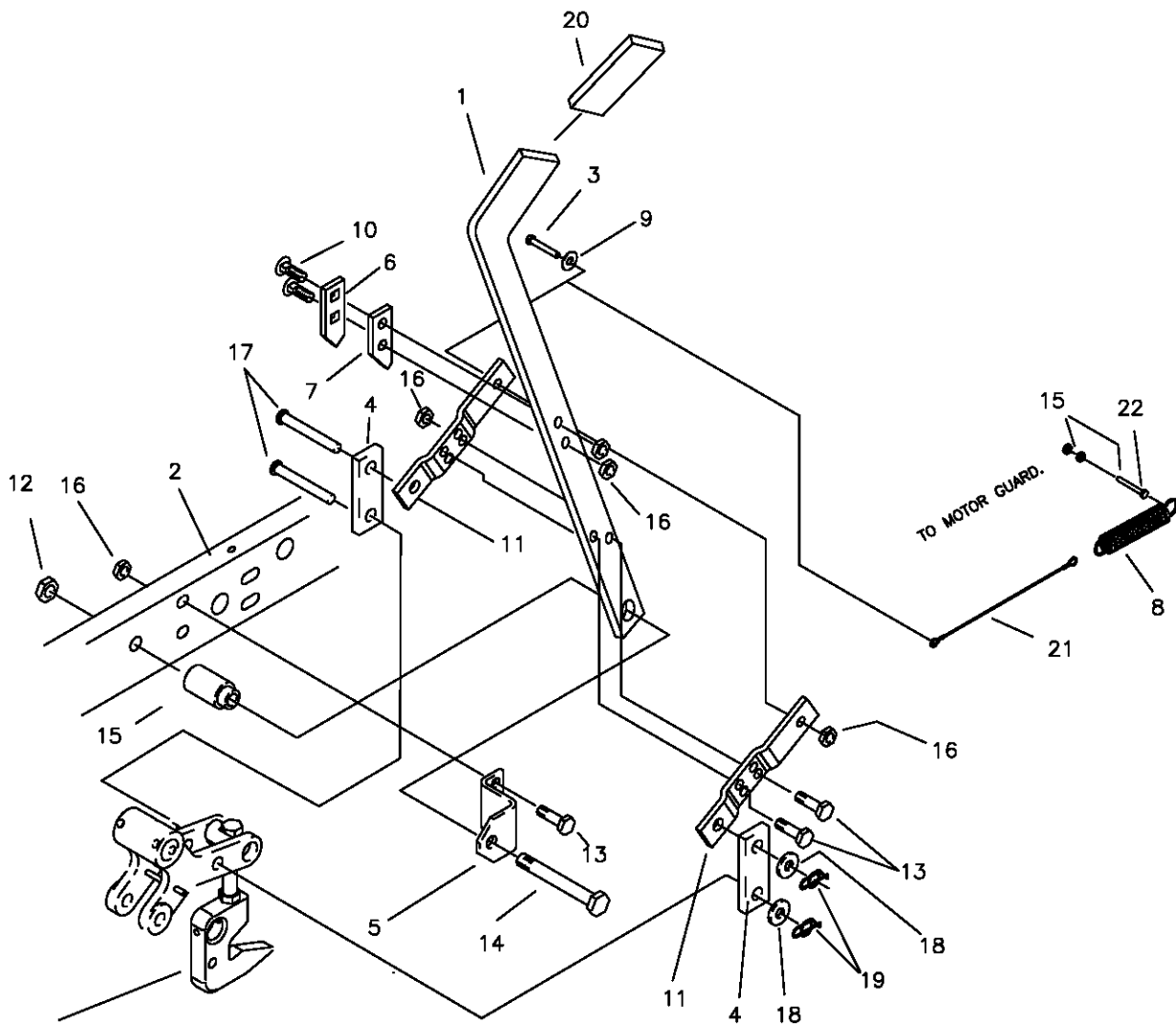
**FRONT STATIONARY  
IDLER ASSEMBLY**



REF NO.	PART NO.	QTY.	DESCRIPTION	REF NO.	PART NO.	QTY.	DESCRIPTION
1	686-081P	1	EXTENSION FOR SPRING	21	F-1865	1	3/8-16 X 2-1/2" CARRIAGE BOLT
2	660-030P	1	HANDLE, BELT TIGHTENER	22	660-039P	1	MOUNT, DOUBLE IDLER
3	660-031P	1	ARM, BELT TIGHTENER	23	F-1394	6	3/8-16 X 1" GR. 5
4	609-034P	2	SPINDLE SPACER REINFORCEMENT	24	F-1526	4	1/2-13 X 1-1/2" GR. 5
5	D-3758	1	"V" IDLER PULLEY	25	668-022P	1	BELT GUARD
6	D-3338	2	IDLER PULLEY	26	668-021P	1	SPACER, BELT GUARD
7	F-1005-03	16	3/8 LOCK NUT	27	D-3815	1	5" IDLER PULLEY
8	F-1009-03	5	3/8 FLAT WASHER	28	F-1558	1	3/8-16 X 7/8 GR. 5
9	659-085P	1	MOUNTING PIN	29	F-1966	4	1/2" THIN NYLOC NUT
10	660-036P	1	IDLER ARM	30	660-060P	1	BELT KEEPER
11	F-1521	5	1/2" FLAT WASHER	31	F-1464	2	1/2" LOCK WASHER
12	620-201P	4	BEARING CAP	32	F-1489	2	1/2" THIN NUT
13	F-1005-05	4	1/2" LOCK NUT	33	660-038P	1	3/8" SPACER
14	F-1822	3	1/2-13 X 2-1/4" GR. 5	34	661-015P	1	SHACKLE
15	H-2092	1	SPRING				
16	660-084P	1	BELT KEEPER				
17	660-037P	1	1/2" THICK SPACER (60" DECK)				
-	660-082P	1	3/8" THICK SPACER (52" DECK)				
18	D-3730	2	BUSHING, TEFLON COATED				
19	F-1976	2	3/8-16 X 1-3/4" CARRIAGE BOLT				
20	F-1733	1	1/4" DRIVE STUD				



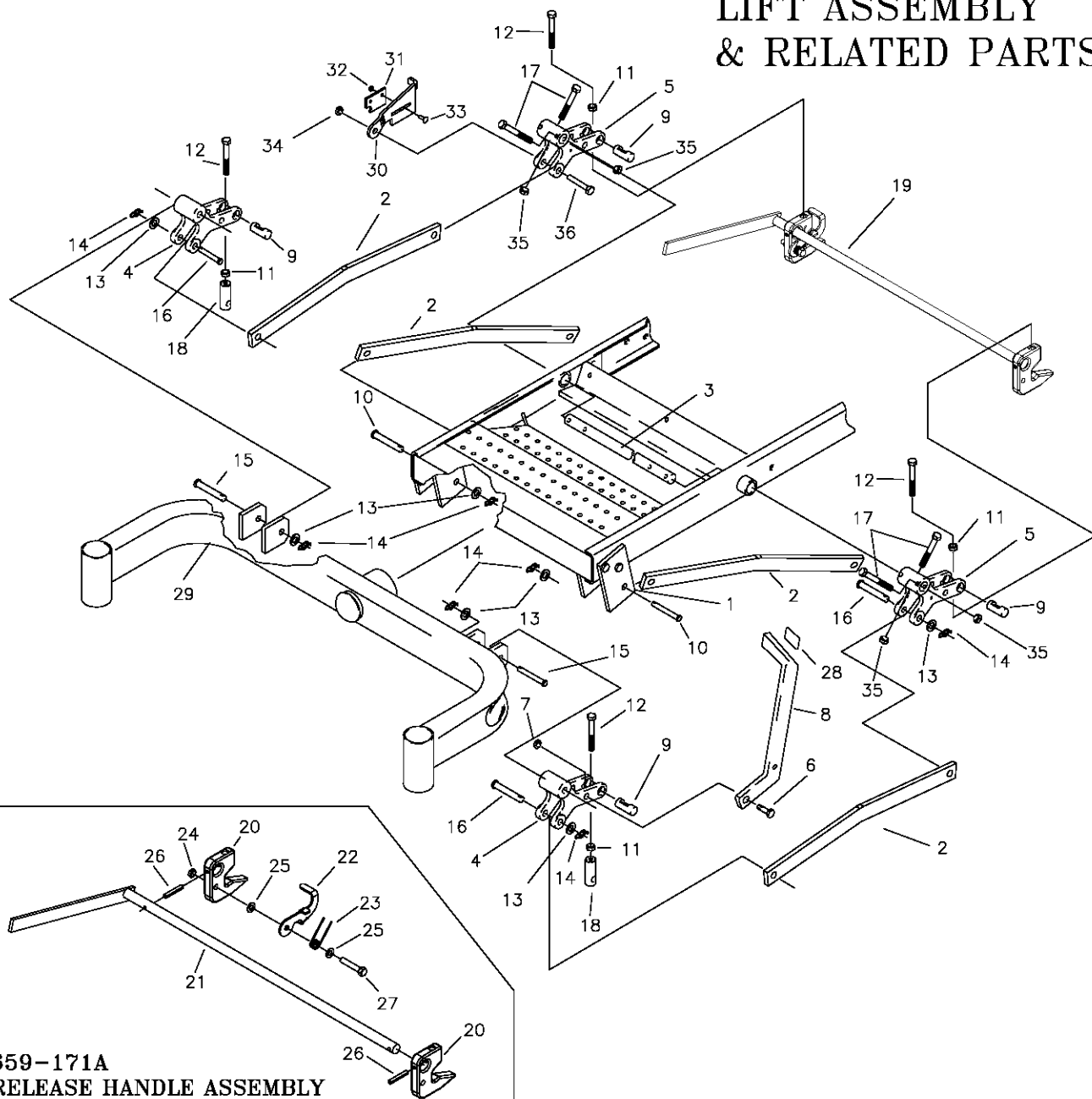
# LIFT HANDLE ASSEMBLY & RELATED PARTS



SEE ASSEMBLY NUMBER  
PAGE 1-5

REF NO.	PART NO.	QTY.	DESCRIPTION	REF NO.	PART NO.	QTY.	DESCRIPTION
1	659-060P	1	LIFT HANDLE	15	642-095P	1	HANDLE PIVOT PIN
2	659-022W	1	FRAME WELDMENT, LH.	16	F-1005-03	5	NUT, 3/8-16 LOCKNUT (STOVER)
3	F-1015-28	1	3/8-16 X 1-3/4" GR 5	17	F-1889	2	CLEVIS PIN, 1/2 X 2 5/8"
4	642-061P	2	HANDLE LINK	18	F-1521	2	1/2" FLAT WASHER
5	642-041P	1	HANDLE PIVOT BRACKET	19	H-2239	2	RUE RING, 1/2"
6	642-127P	1	TOP PEG LATCH PLATE	20	H-2324	1	VINYL GRIP, 3/8 X 1 1/2"
7	642-126P	1	TOP PEG SPACER PLATE	21	H-2460	1	CABLE
8	H-1610	1	SPRING, 1 1/2" OD. X 8"	22	F-1293	1	1/2-13 X 3" GR. 5
9	F-1009-03	1	FLAT WASHER, 3/8"				
10	F-1672	2	CARRIAGE BOLT, 3/8-16 X 1 1/4"				
11	642-060P	2	SPRING ANCHOR PLATE				
12	F-1005-05	1	NUT, 1/2-13 LOCKNUT				
13	F-1307	4	1/2-13 X 1 1/4" GR. 5				
14	F-1439	1	1/2-13 X 3" GR. 5				

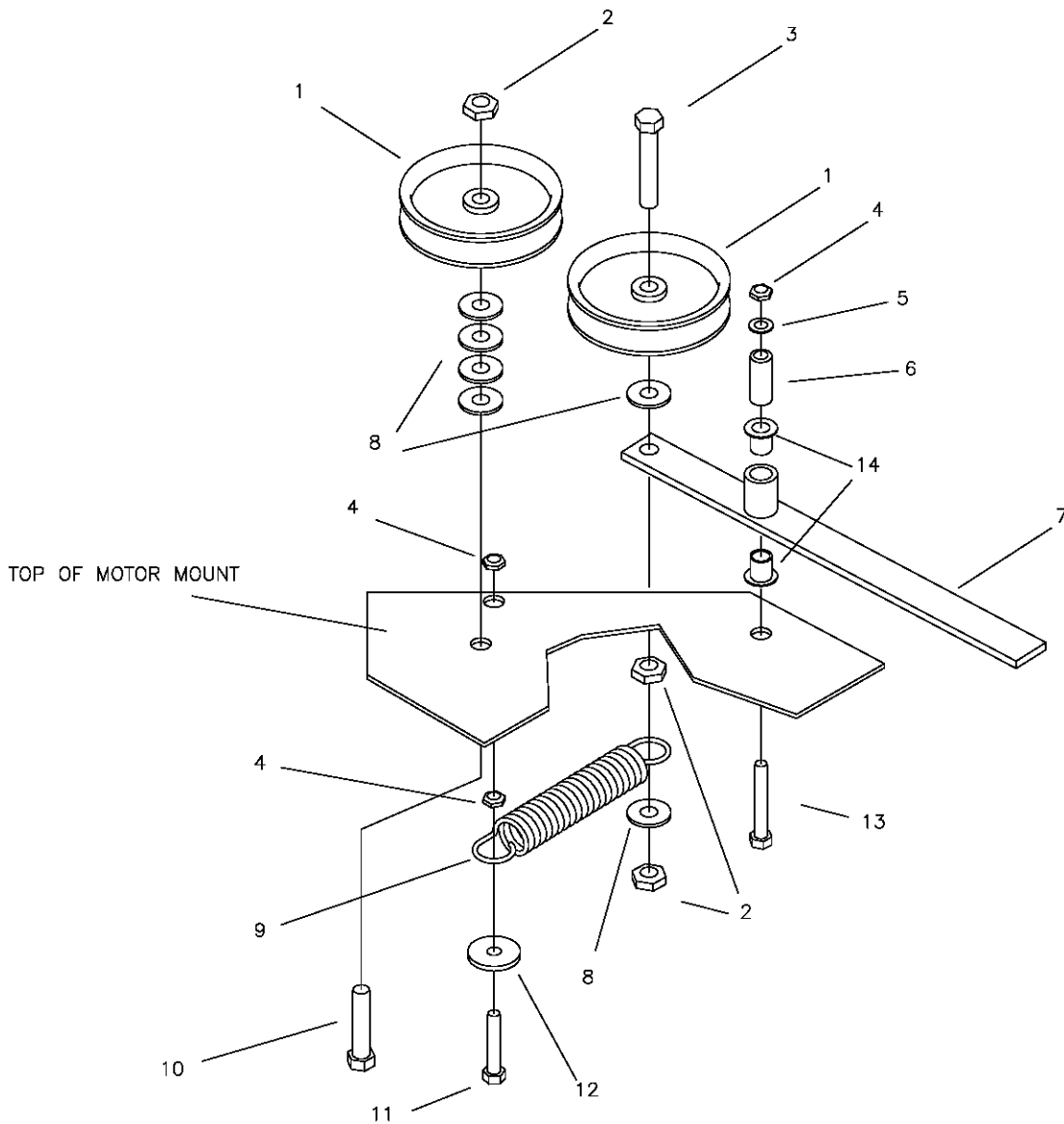
# LIFT ASSEMBLY & RELATED PARTS



**659-171A  
RELEASE HANDLE ASSEMBLY**

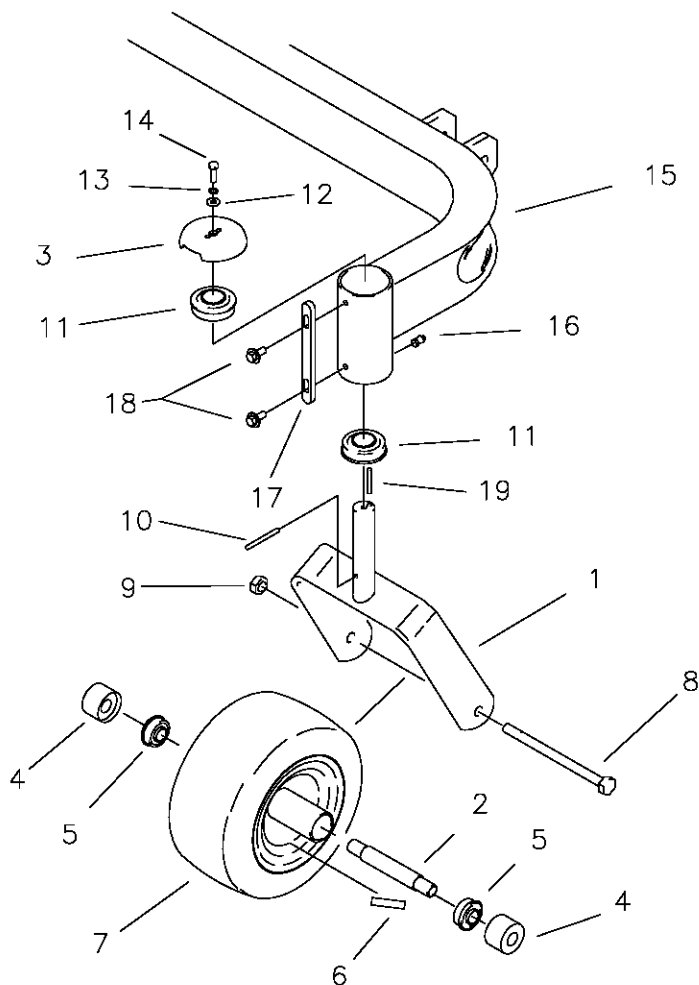
REF NO.	PART NO.	QTY.	DESCRIPTION	REF NO.	PART NO.	QTY.	DESCRIPTION
1	642-063P	2	DRAG BAR TAB	19	659-171A	1	RELEASE HANDLE ASSEMBLY
2	659-155P	4	DRAG LINK BAR	20	659-140P	2	DECK HOOK
3	620-051P	1	LIFT BAR	21	659-148W	1	RELEASE HANDLE WELDMENT
4	642-081P	2	LIFT SLEEVE, FRONT	22	659-145P	1	HOOK KEEPER
5	642-082P	2	LIFT SLEEVE, REAR	23	H-2547	1	SPRING, TORSION
6	F-1879	1	5/16-18 X 1 1/4" GR.5	24	F-1005-03	1	NUT, 3/8-16, STOVER
7	F-1125	1	5/16-18 STOVER NUT	25	F-1009-03	2	WASHER, FLAT, 3/8"
8	659-056P	1	DECK LIFT PEDAL	26	F-2009	2	SPIROL ROLL PIN 1/4 X 1-1/2
9	642-177P	4	HANGER PIN	27	F-1073	1	CAPSCREW, 3/8-16 X 2, GR. 5
10	F-1896	2	CLEVIS PIN, 1/2 X 1 3/4"	28	H-2401	1	TREAD PAD
11	F-1489	4	NUT, 1/2" JAM	29	SEE PAGE 2-7	1	FRONT AXLE WELDMENT
12	F-1936	4	1/2-13 X 3 1/2, 2" THREAD	30	659-146P	1	LATCH PLATE
13	F-1521	7	WASHER, 1/2 NARROW	31	659-170P	1	PLATE, CATCH
14	H-2239	7	RUE RING, 1/2"	32	F-1158	2	NUT, 1/4" STOVER
15	F-1890	2	CLEVIS PIN, 1/2 X 3 1/2"	33	F-1823	2	CARRIAGE BOLT, 1/4-20 X 3/4"
16	F-1898	3	CLEVIS PIN, 1/2 X 2 3/4"	34	F-1005-05	1	1/2" STOVER NUT
17	F-2039	4	5/16-24 x 2" HHCS	35	F-2041	4	5/16-24 JAM NUT
18	642-175P	2	ADJUSTABLE HANGER END	36	F-1828	1	1/2-13 x 3-1/2" CAPSCREW

# TRANSMISSION IDLERS & RELATED PARTS



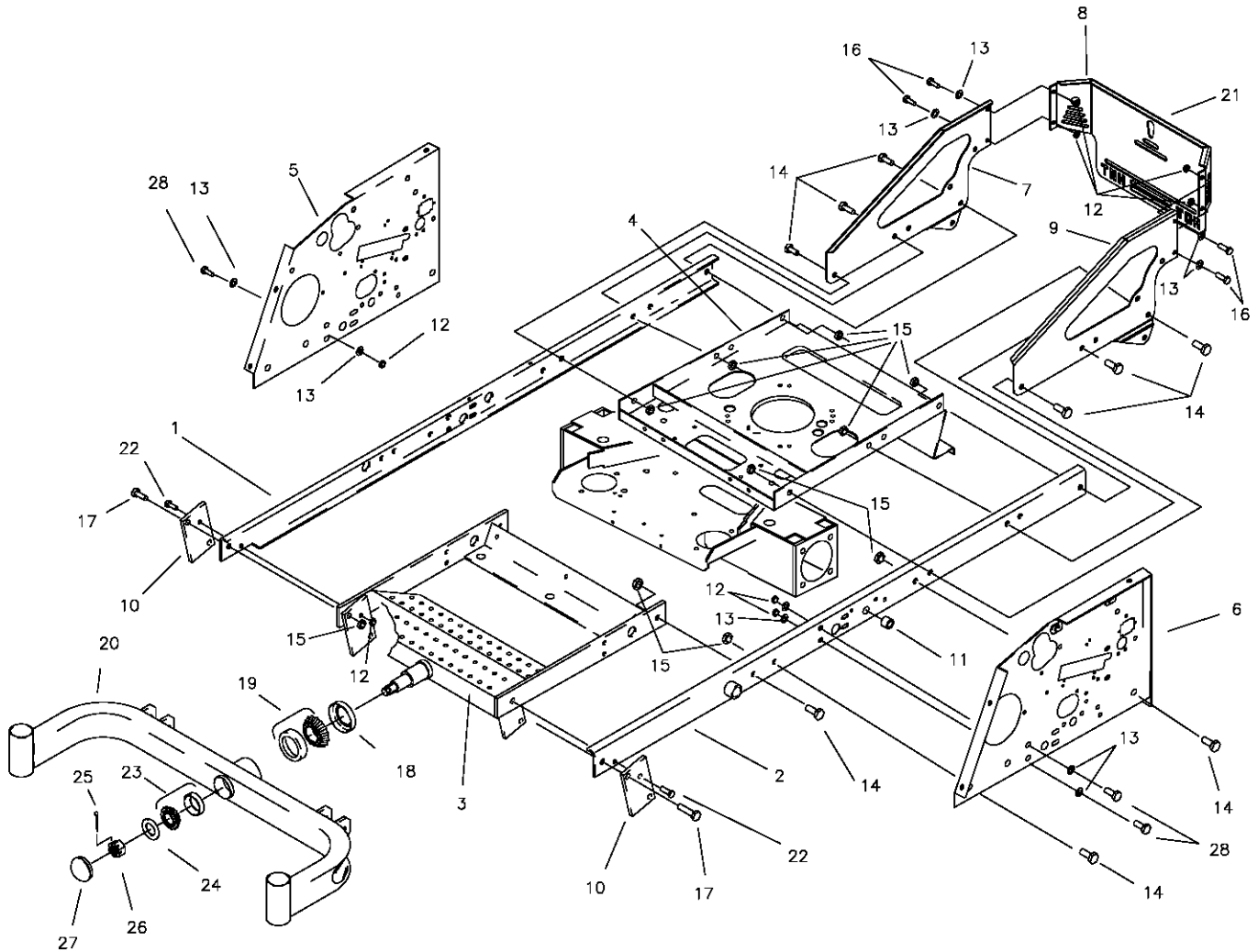
REF NO.	PART NO.	QTY.	DESCRIPTION
1	D-3338	2	4" FLAT IDLER PULLEY
2	F-1005-05	3	1/2-13 STOVER NUT
3	F-1439	1	1/2-13 X 3" BOLT GR. 5
4	F-1005-03	3	3/8-16 STOVER NUT
5	F-1009-03	1	3/8" FLAT WASHER
6	659-085P	1	MOUNTING PIN
7	663-057A	1	HYDRO IDLER ARM ASSEMBLY
8	F-1009-05	6	1/2" FLAT WASHER
9	H-2092	1	1 1/4 X 5" SPRING
10	H-1664	1	1/2-13 X 2 1/4" BOLT GR. 5
11	F-1073	1	3/8-16 X 2" BOLT GR. 5
12	609-034P	1	SPACER
13	F-1015-30	1	3/8-16 X 2 1/2" BOLT GR. 5
14	D-3730	2	BUSHING, 5/8" BORE

## CASTER WHEEL ASSEMBLY



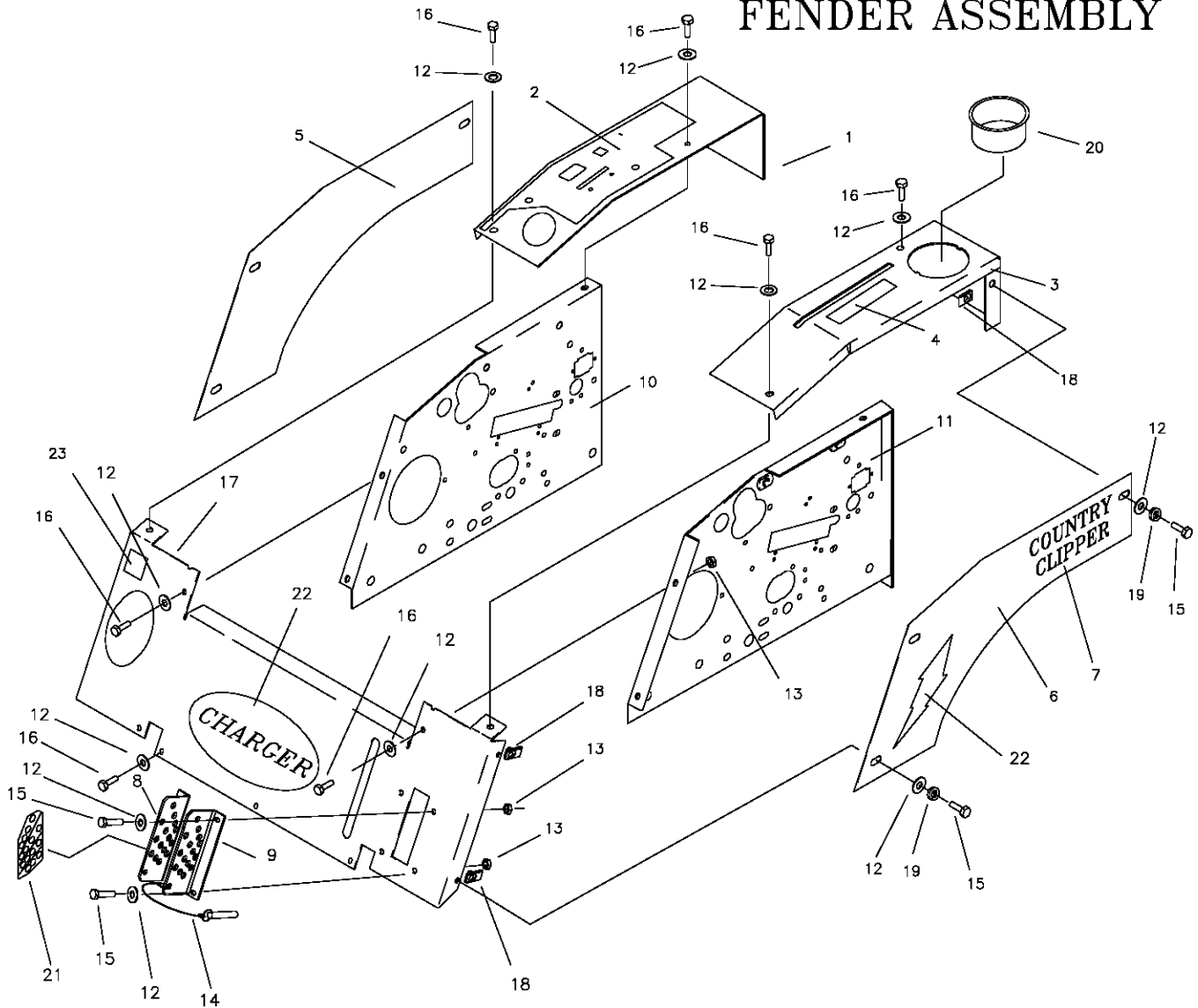
REF NO.	PART NO.	QTY.	DESCRIPTION
1	647-192W	2	CASTER WELDMENT
2	647-038P	2	BEARING SPACER
3	636-177P	2	BEARING CAP
4	611-135P	4	BEARING SHIELD
5	D-3432	4	BEARING, 5/8 ID X 1 3/8 OD
6	P-11384	2	DECAL, 12 PSI
7	D-3670	2	FRONT TIRE/WHEEL
8	F-1908	2	1/2-13 X 6 1/2" GR. 5 BOLT
9	F-1005-05	2	1/2-13 LOCK NUT
10	F-1456	2	3/16 ROLL PIN
11	D-2008-02	4	BEARING, SPD SF-16-32
12	F-1009-01	2	1/4" FLAT WASHER
13	F-1019-01	2	1/4" LOCK WASHER
14	F-1810	2	1/4-20 X 3/4 W/NYLON PATCH
15	642-185W	1	FRONT AXLE WELDMENT
16	H-1056	2	GREASE ZERK
17	659-187P	2	STOP TAB
18	F-2030	4	1/4" X 5/8" SELF TAPPING SCREW
19	F-1855	2	3/16" X 1" ROLL PIN

# FRAME SIDES & RELATED PARTS



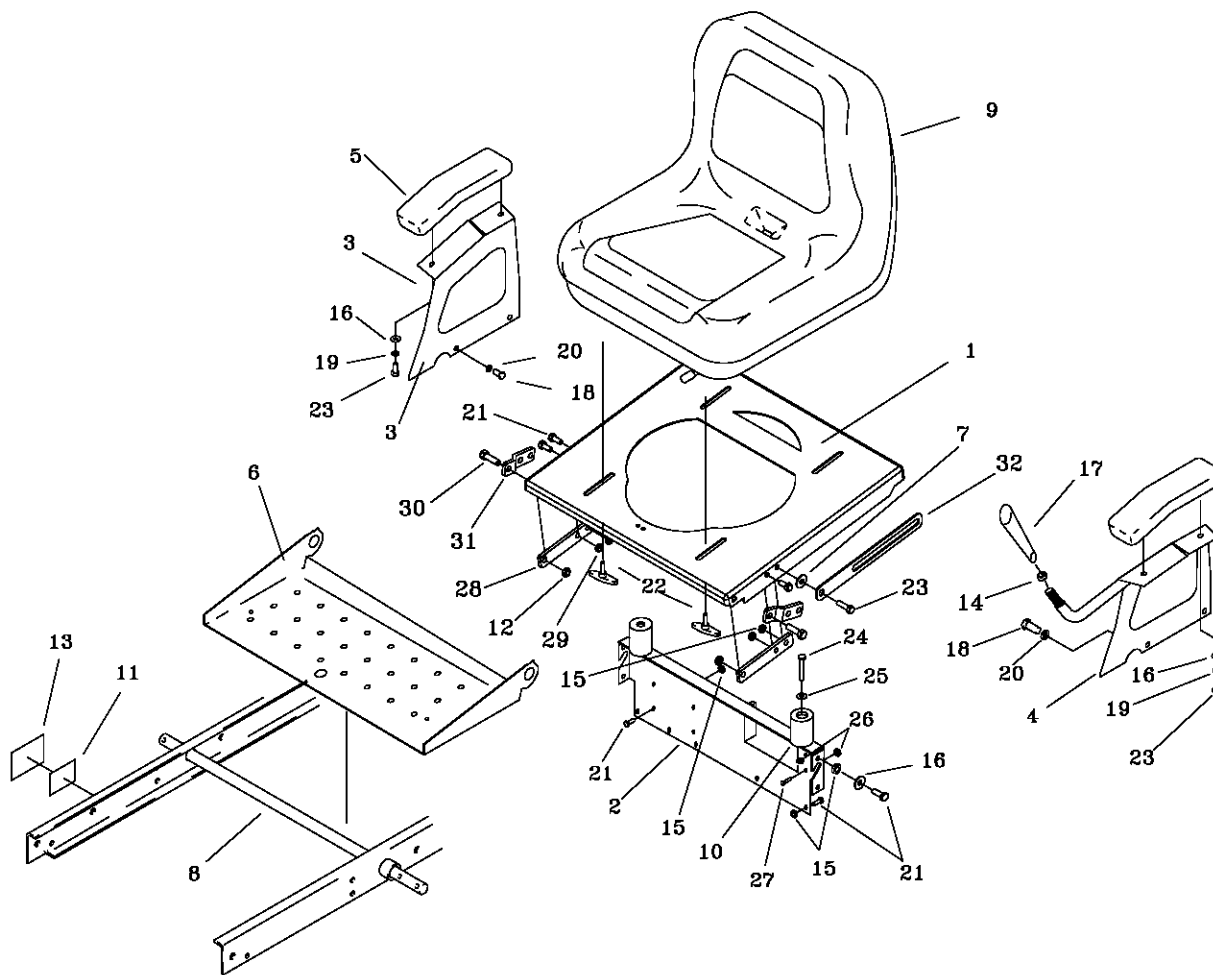
REF NO.	PART NO.	QTY.	DESCRIPTION	REF NO.	PART NO.	QTY.	DESCRIPTION
1	659-021W	1	FRAME SIDE RH.	17	F-1293	2	1/2-13 X 2", GR.5
2	659-022W	1	FRAME SIDE LH.	18	D-3647	1	FRONT PIVOT SEAL
3	663-029W	1	AXLE MOUNTING WLDT.	19	D-3646	1	FRONT PIVOT TAPARED ROLLER BRG.
4	663-070W	1	MOTOR MOUNT WLDT.	20	SEE PAGE 2-7	1	FRONT AXLE WELDMENT
5	659-011P	1	SIDE PANEL RH.	21	P-12097	1	COLORED DECAL, "COUNTRY CLIPPER"
6	659-012P	1	SIDE PANEL LH.	22	F-1015-28	2	3/8-16 X 1-3/4" CAPSCREW
7	659-133P	1	RH ENGINE SIDE PANEL	23	D-3782	1	TAPARED ROLLER BRG.
8	647-120P	1	REAR PANEL GUARD	24	606-303P	1	1" WASHER
9	659-134P	1	LH ENGINE SIDE PANEL	25	F-1728	1	3/16 X 2" COTTER PIN
10	642-063P	2	DRAG BAR TAB	26	F-1724	1	1-14 SLOTTED NUT
11	D-3730	2	BUSHING, 5/8 BORE(JOYSTICK)	27	H-1924	1	GREASE CAP
12	F-1005-03	10	3/8-16 STOVER NUT	28	F-1307	4	3/8-16 X 1-1/4" CAPSCREW
13	F-1009-03	16	3/8 FLAT WASHER				
14	F-1759	12	1/2-13 X 1" GR.5				
15	F-1005-05	16	1/2-13 LOCK NUT				
16	F-1558	4	3/8-16 X 7/8" GR.5				

# FENDER ASSEMBLY



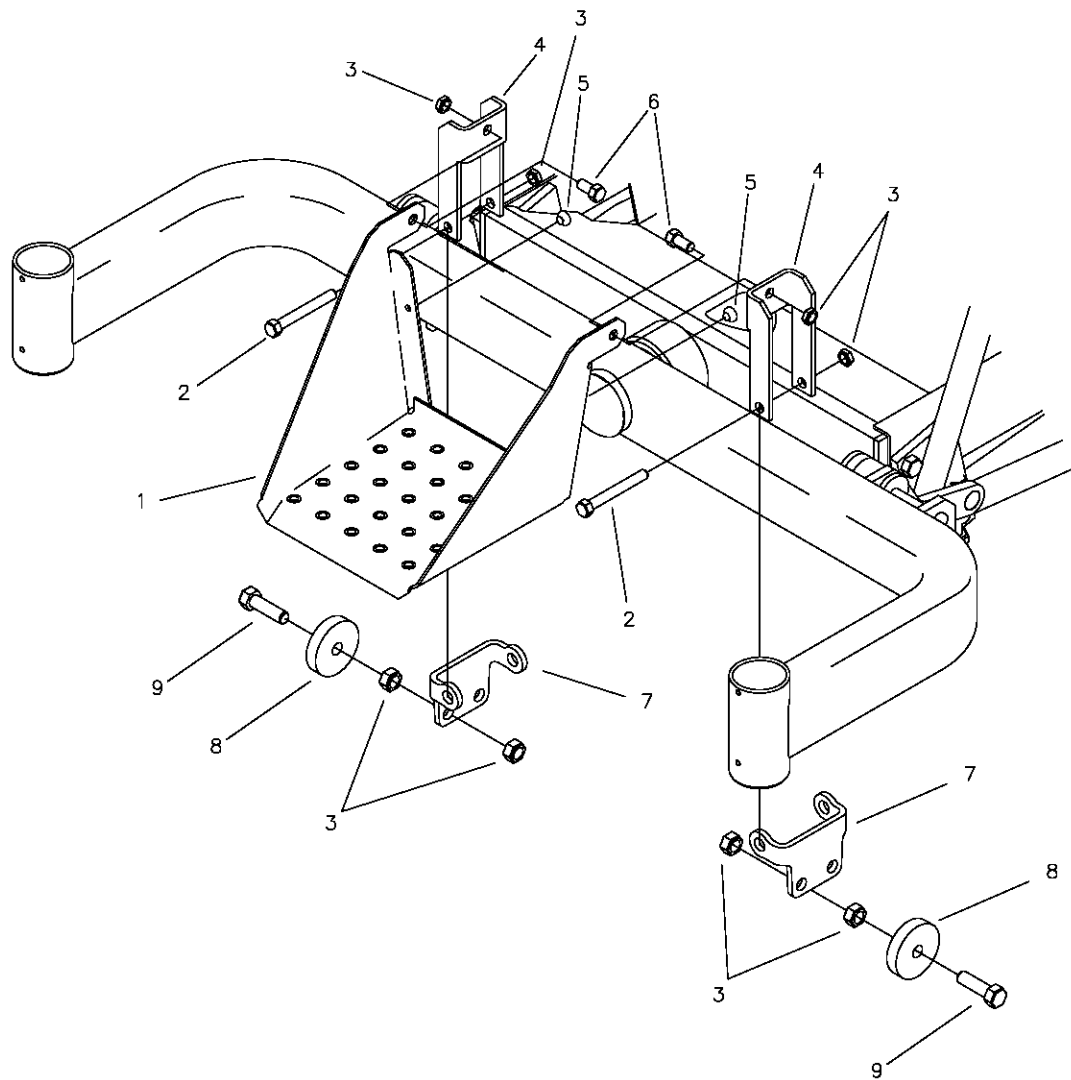
REF NO.	PART NO.	QTY.	DESCRIPTION	REF NO.	PART NO.	QTY.	DESCRIPTION
1	663-060A	1	FENDER CAP RH W/DECAL	13	F-1125	8	5/16-18 LOCK NUT
-	663-061A	1	FENDER CAP, TWIN STK. RH W/DECAL	14	F-2028	1	LOCK PIN 1/2 x 3"
2	P-11626	1	DECAL, "CONTROL PANEL"	15	F-1015-15	8	5/16-18 X 1" GR.5
3	663-041A	1	FENDER CAP LH. W/DECAL	16	F-1546	9	5/16-18 X 3/4" GR.5
-	663-042A	1	FENDER CAP, TWIN STK. LH. W/DECAL	17	663-043A	1	FRONT PANEL W/DECALS
4	P-11382	1	DECAL, PARK BRAKE	18	F-1860	6	5/16 U-NUT
5	663-053A	1	FENDER SKIRT RH W/DECALS	19	F-1019-02	6	5/16 LOCK WASHER
6	663-054A	1	FENDER SKIRT LH W/DECALS	20	H-2228	1	CUP HOLDER
7	P-12098	2	DECAL, COUNTRY CLIPPER, SMALL	21	P-12034	1	DECAL, "CUT HEIGHT"
8	647-097A	1	LATCH PLATE RH W/DECAL	22	P-11832	1	DECAL, "CHARGER"
9	647-095P	1	LATCH PLATE LH.	23	P-12557	1	DECAL, "CAUTION"
10	659-011P	1	SIDE PANEL RH.				
11	659-012P	1	SIDE PANEL LH.				
12	F-1009-02	20	5/16 FLAT WASHER				

# SEAT, FOOTDECK & RELATED PARTS



REF NO.	PART NO.	QTY.	DESCRIPTION	REF NO.	PART NO.	QTY.	DESCRIPTION
1	663-082P	1	SEAT MOUNTING BASE	17	H-2317	1	TAPERED HANDLE (JOYSTICK)
2	663-010P	1	REAR SEAT BRACE	18	F-1015-23	4	3/8-16 X 3/4" GR. 5
3	659-266P	1	ARM REST RH. (JOYSTICK)	19	F-1019-02	4	5/16 LOCK WASHER
-	663-085P	1	ARM REST RH, (TWINSTICK)	20	F-1019-03	4	3/8 LOCK WASHER
4	659-267P	1	ARM REST LH. (JOYSTICK)	21	F-1546	11	5/16-18 X 3/4" GR. 5
-	663-086P	1	ARM REST LH, (TWINSTICK)	22	659-073A	4	T-HANDLE ASSEMBLY
5	H-2615	2	ARM REST PAD	23	F-1015-15	5	5/16-18 X 1" GR. 5
6	659-006P	1	FOOT DECK	24	F-1015-02	2	1/4-20 X 5/8", GR.5
7	659-274P	1	PIVOT WASHER	25	F-1009-01	2	1/4" FLAT WASHER
8	620-051P	1	LIFT BAR	26	F-1158	5	1/4" STOVER NUT
9	H-2605	1	SEAT	27	F-1539	2	1/4-20 X 1 1/4", GR.5
10	659-192P	2	SEAT BRACKET SPACER	28	659-175P	2	SEAT HINGE TAB
11	P-9196-5	1	SHIVERS MODEL DECAL	29	F-1125	4	5/16-18 STOVER NUT
12	F-1005-03	4	3/8-16 LOCK NUT	30	F-1394	2	3/8-16 X 1" CAPSCREW
13	P-12473	1	SERIAL TAG LAMINATION DECAL	31	647-086P	2	FLIP SEAT MATING TAB
14	F-1486	1	3/8-16 JAM NUT	32	659-272P	1	SEAT STOP BAR
15	F-1005-02	13	5/16-18 LOCK NUT				
16	F-1009-02	8	5/16 FLAT WASHER				

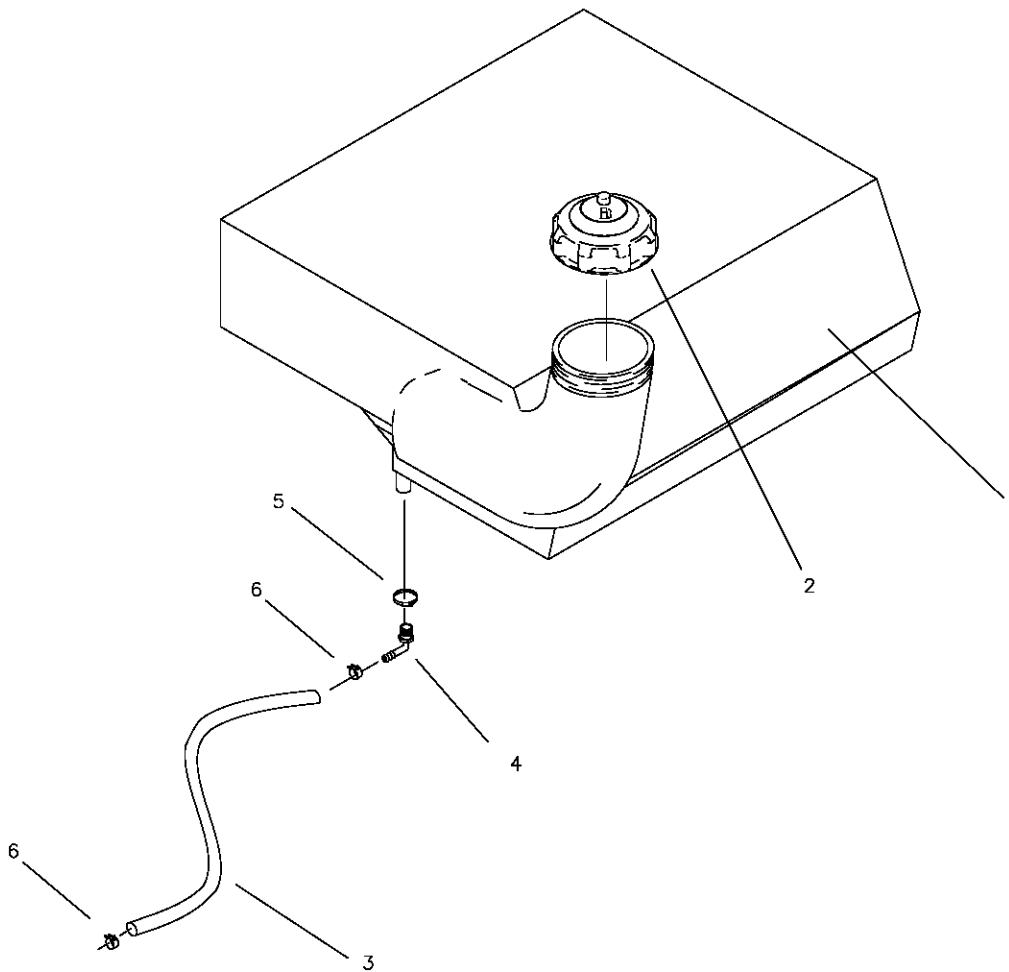
# FRONT STEP ASSEMBLY



REF NO.	PART NO.	QTY.	DESCRIPTION
1	647-133P	1	FRONT STEP
2	F-1616	2	3/8-16 X 3-1/4" HEX HEAD BOLT
3	F-1005-03	8	3/8-16 LOCK NUT
4	647-134P	2	FRONT STEP YOKE
5	H-2461	2	RUBBER BUMPER BUTTON
6	F-1015-23	2	3/8-16 X 3/4" HEX HEAD BOLT
7	629-636P	2	ROLLER MOUNT
8	642-105P	2	ROLLER
9	F-1307	2	3/8-16 x 1-1/4" GR.5 BOLT



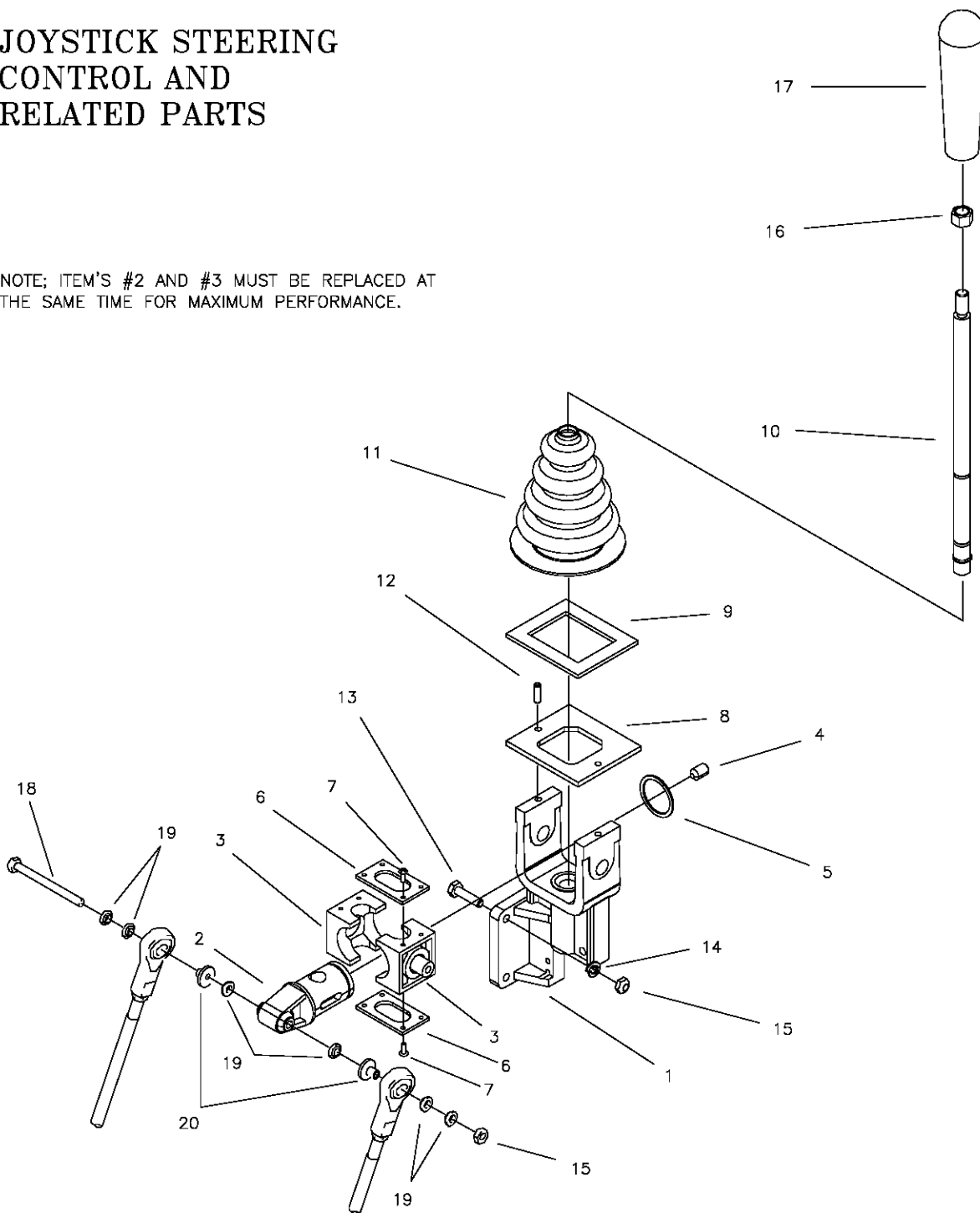
## FUEL TANK ASSEMBLY 663-075A



REF NO.	PART NO.	QTY.	DESCRIPTION
1	H-2450	1	8 GALLON TANK
2	H-2232	1	GAS CAP
3	644-034P	1	29 1/2" FUEL LINE
4	H-1646	1	HOSE BARB, 90 DEG.
5	H-1952	1	HOSE CLAMP
6	H-1687	2	HOSE CLAMP, 1/2"

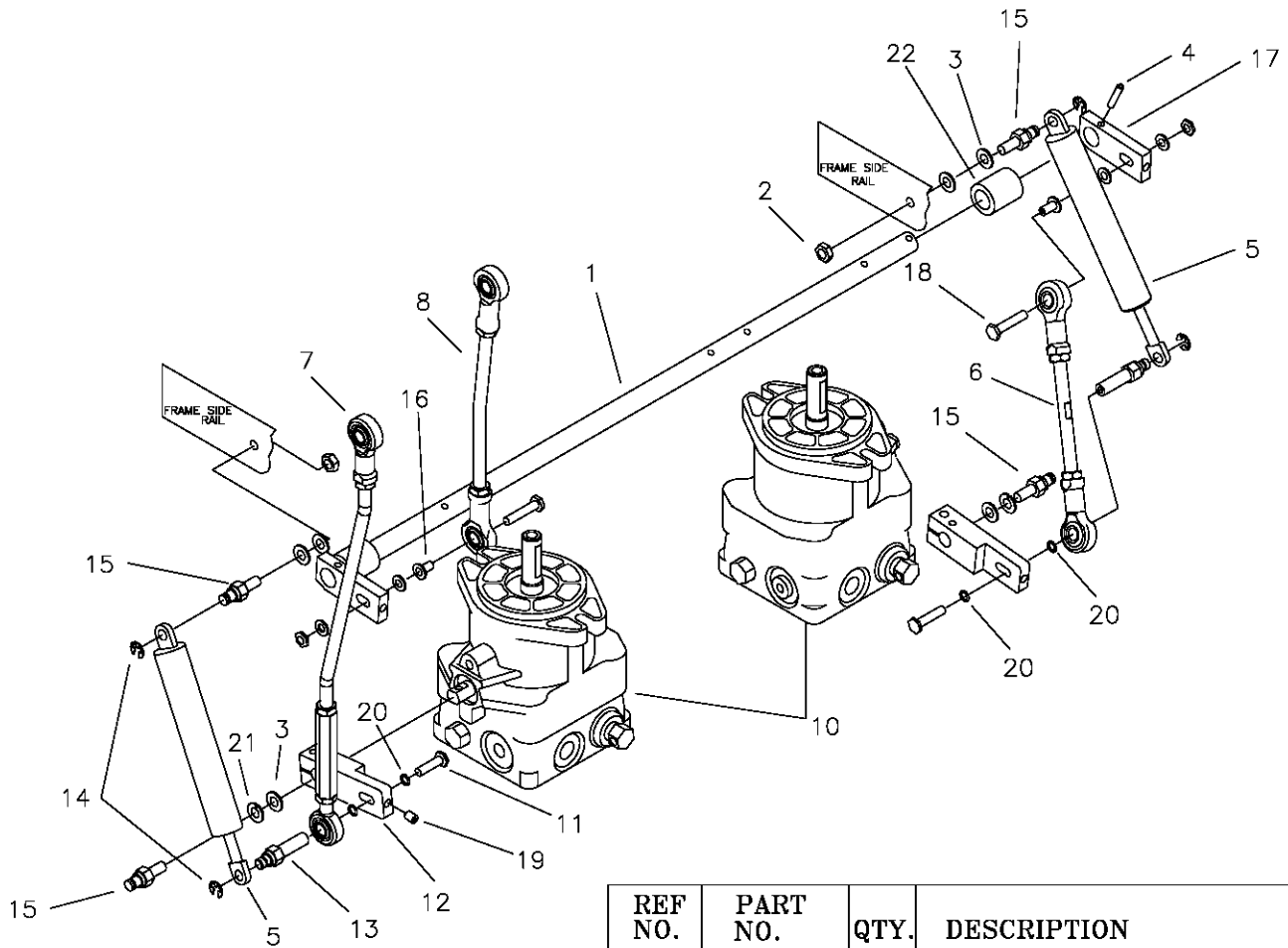
# JOYSTICK STEERING CONTROL AND RELATED PARTS

NOTE: ITEM'S #2 AND #3 MUST BE REPLACED AT THE SAME TIME FOR MAXIMUM PERFORMANCE.



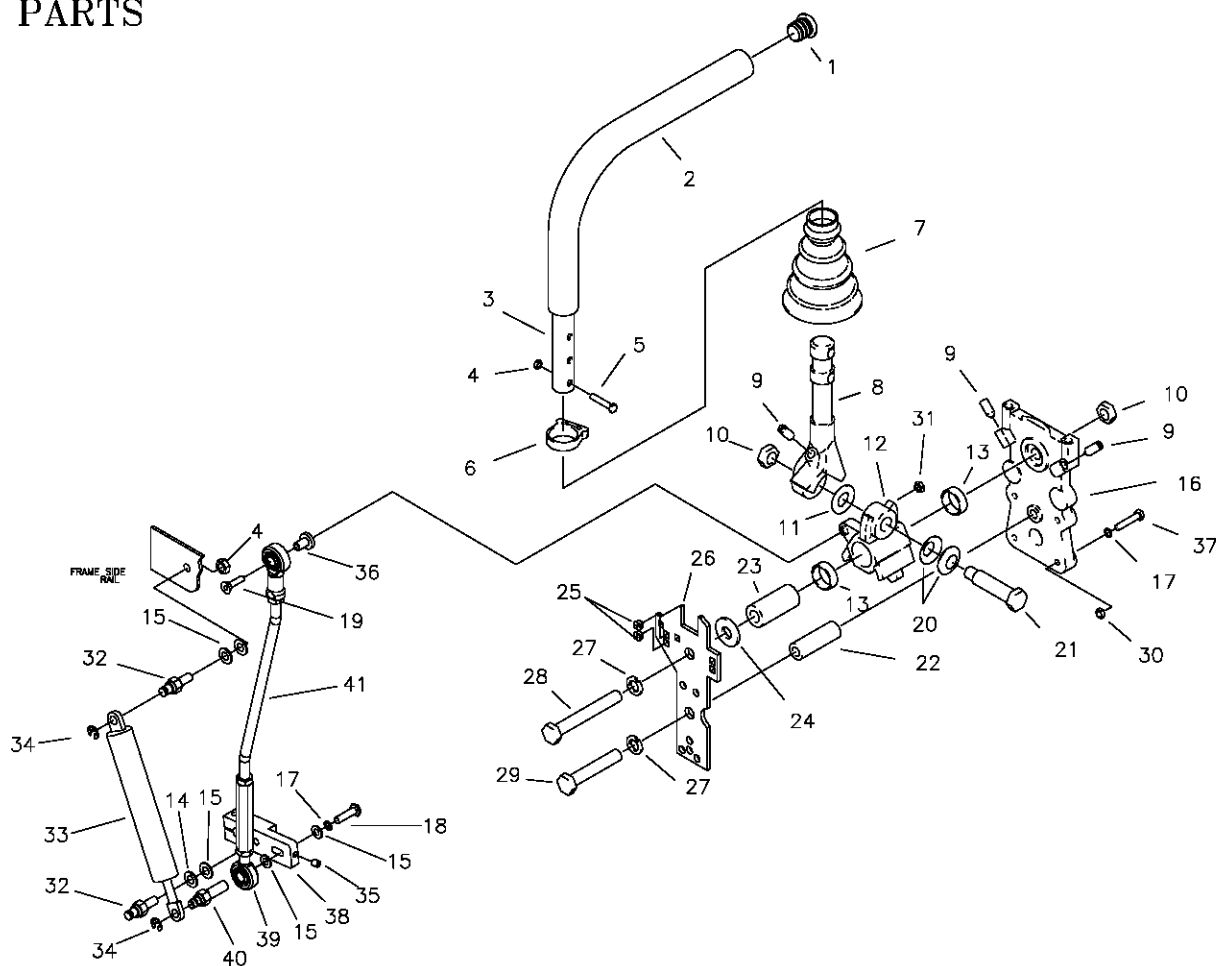
REF NO.	PART NO.	QTY.	DESCRIPTION	REF NO.	PART NO.	QTY.	DESCRIPTION
-	647-122A	1	JOYSTICK ASSEMBLY	11	H-1991	1	BOOT, BELLOWS
1	659-144P	1	JOYSTICK YOKE	12	F-1999	2	ROLL PIN, 3/16 X 5/8
2	H-1992	1	PIVOT SHAFT	13	F-1015-05	3	1/4-20 X 1" HHCS GR. 5
3	H-1993	2	PIVOT BLOCK	14	F-1019-01	3	1/4" LOCK WASHER
4	F-1120	1	BALL PLUNGER	15	F-1158	4	1/4-20 LOCK NUT
5	H-1997	1	SNAP RING, SPIRLOCK	16	F-1011-03	1	3/8-16 NUT, JAM
6	619-306P	2	PIVOT BLOCK PLATE	17	H-2317	1	GRIP, HANDLE
7	F-1624	8	#6-32 X 3/8" SCREW SLOT	18	F-1020-01	1	1/2-20 X 3-1/2" GR. 5
8	659-129P	1	JOYSTICK TOP PLATE	19	H-1989	6	BUSHING, BALL JOINT
9	H-1947	1	GASKET, FOAM	20	H-2465	2	1/4" SPACER
10	621-140A	1	JOYSTICK SHAFT ASSEMBLY				

## JOYSTICK STEERING CONTROL AND RELATED PARTS (CONTINUED)



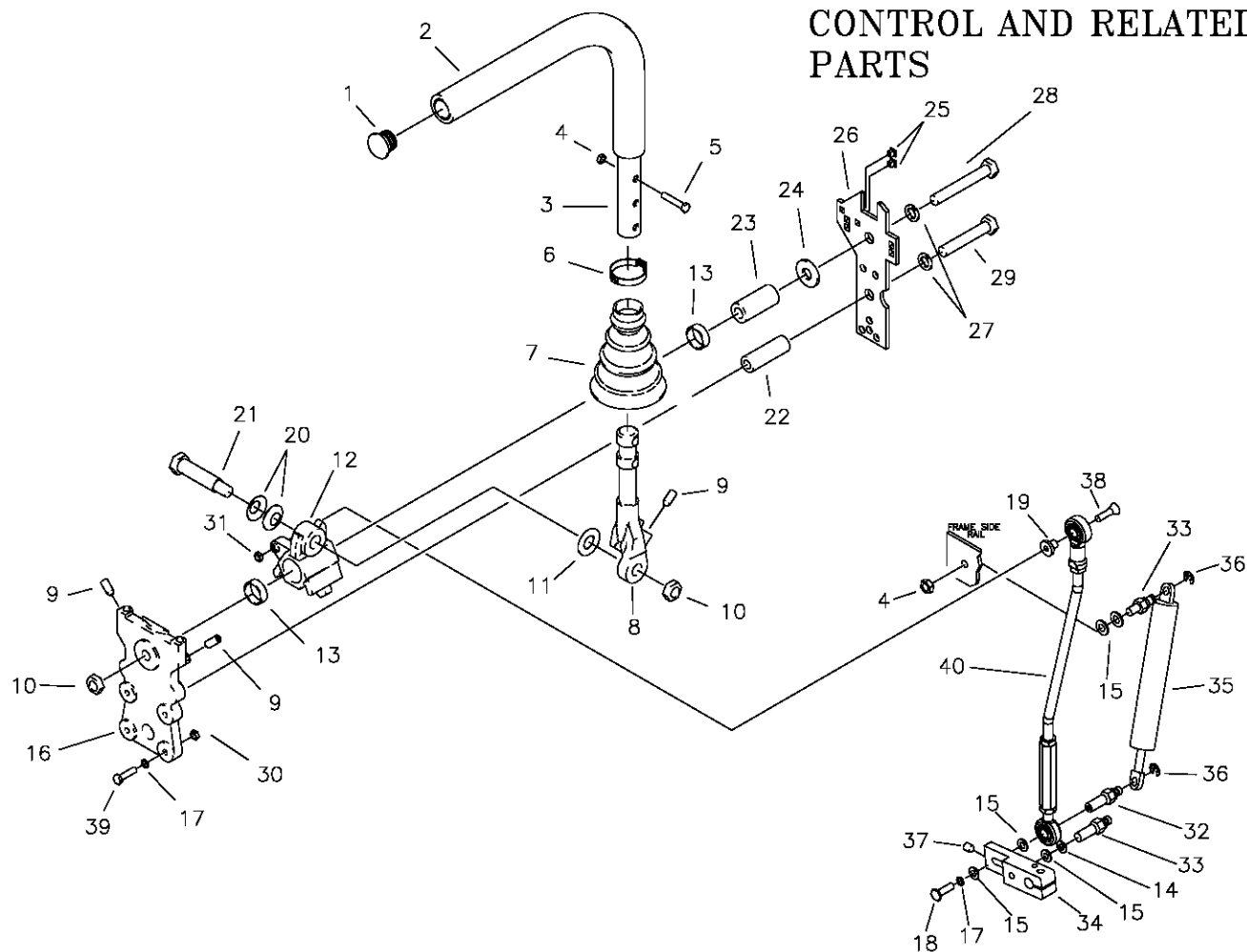
REF NO.	PART NO.	QTY.	DESCRIPTION
1	659-026P	1	HYDRO SHIFT ROD
2	F-1125	2	5/16" STOVER NUT
3	F-1009-02	6	5/16" FLAT WASHER
4	F-1503	2	3/16 X 1" ROLL PIN
5	H-2467	2	DUAL ACTION DAMPER, LITE DUTY
6	659-114P	1	LOWER LINKAGE
7	663-050P	1	STEERING LINKAGE ASSEMBLY
8	663-049P	1	STEERING LINKAGE ASSEMBLY
9	F-1009-01	4	1/4" FLAT WASHER
10	----	-	SEE PAGE 3-18
11	F-1015-05	2	1/4-20 X 1" BOLT GR 5
12	663-022P	2	SHIFT ARM
13	663-051P	2	DAMPNER BOLT, FEMALE
14	F-1610	4	E-RING
15	638-028P	4	5/16-18 X 3/4" DAMPNER BOLT
16	H-2465	2	1/4 X 5/16 SHOULDER WASHER
17	625-030P	2	SWIVEL ARM
18	F-1716	2	1/4-20 X 1-1/2" BOLT GR 5
19	F-1228	2	1/4-20 SETSCREW
20	F-1019-01	2	1/4" LOCK WASHER
21	F-1019-02	2	5/16" LOCK WASHER
22	651-024P	2	SPACER

# RIGHT HAND STEERING CONTROL AND RELATED PARTS



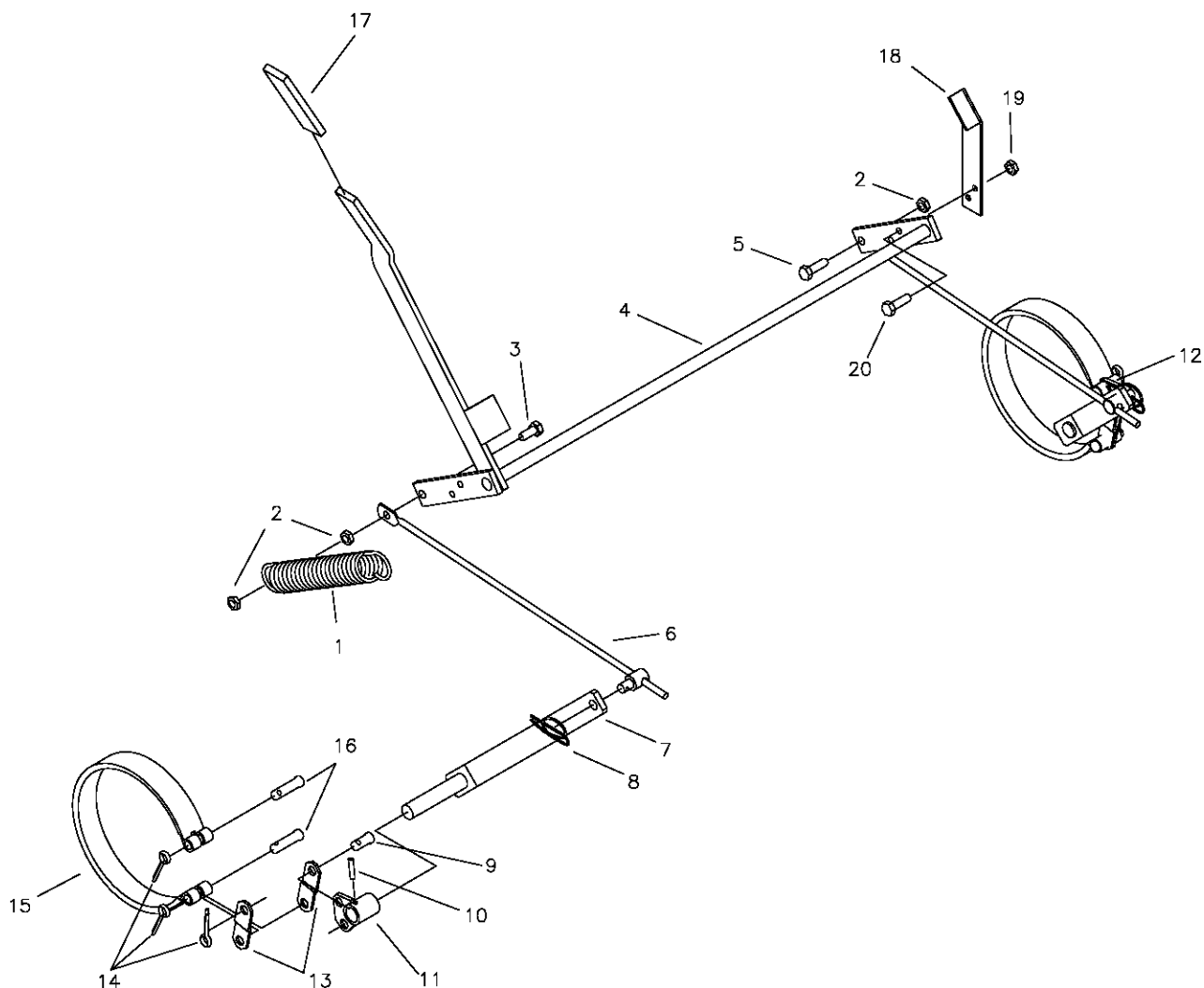
REF NO.	PART NO.	QTY.	DESCRIPTION	REF NO.	PART NO.	QTY.	DESCRIPTION
-	636-168A	1	RH DUAL LEVER ASSEMBLY	25	F-1995	2	GROMMET, NYLON
1	H-2080	1	END PLUG, 15/16" BLACK	26	636-167P	1	TOP PLATE, DUALEVER
2	H-2079	1	FOAM GRIP, 17"	27	F-1464	2	1/2" LOCK WASHER
3	642-004A	1	CONTROL LEVER ASSEMBLY	28	F-1828	1	1/2-13 X 3-1/2" HHCS GR. 5
4	F-1125	3	5/16 LOCK NUT	29	F-1439	1	1/2-13 X 3" HHCS GR. 5
5	F-1015-17	2	5/16-18 X 1-1/2" HHCS GR. 5	30	F-1158	3	1/4-20 LOCK NUT
6	H-2089	1	HOSE CLAMP	31	F-1748	1	1/4-20 THIN NYLOC NUT
7	H-2081	1	BOOT, TAPERED 1" CUFF	32	638-028P	2	DAMPER BOLT, 5/16-18 X 3/4"
8	625-063P	1	LEVER, DUALEVER	33	H-2168	1	STEERING DAMPER
9	F-1842	3	SETSCREW, 5/16-18 X 3/4"	34	F-1610	2	E-RING FOR 1/4" SHAFT
10	F-1489	2	1/2-13 JAM NUT	35	F-1228	1	1/4-20 SETSCREW
11	H-2116	1	WASHER, FIBER	36	H-2465	1	1/4 X 5/16" SHOULDER WASHER
12	638-033P	1	PIVOT BLOCK, DUALEVER	37	F-1539	3	1/4-20 X 1-1/4" HHCS GR. 5
13	D-3622	2	BEARING	38	663-022P	1	SHIFT ARM
14	F-1019-02	1	5/16" LOCK WASHER	39	H-1885	1	BALL JOINT W\1/4-28 THREAD
15	F-1009-02	5	WASHER, FLAT STD. 5/16"	40	663-051P	1	DAMPNER BOLT, FEMALE
16	638-034P	1	BASE DUALEVER	41	663-050P	1	LINK ROD ASSEMBLY
17	F-1019-01	4	1/4" LOCK WASHER				
18	F-1015-05	1	1/4-20 X 1" HHCS GR. 5				
19	F-1974	1	1/4-20 X 1-1/4" SOCK BOLT				
20	H-2115	2	WASHER, SPRING				
21	625-070P	1	SHOULDER BOLT, 5/8" OD				
22	625-067P	1	BUSHING, STAND OFF				
23	625-064P	1	BUSHING, PIVOT BLOCK				
24	625-072P	1	WASHER, FLAT				

## LEFT HAND STEERING CONTROL AND RELATED PARTS



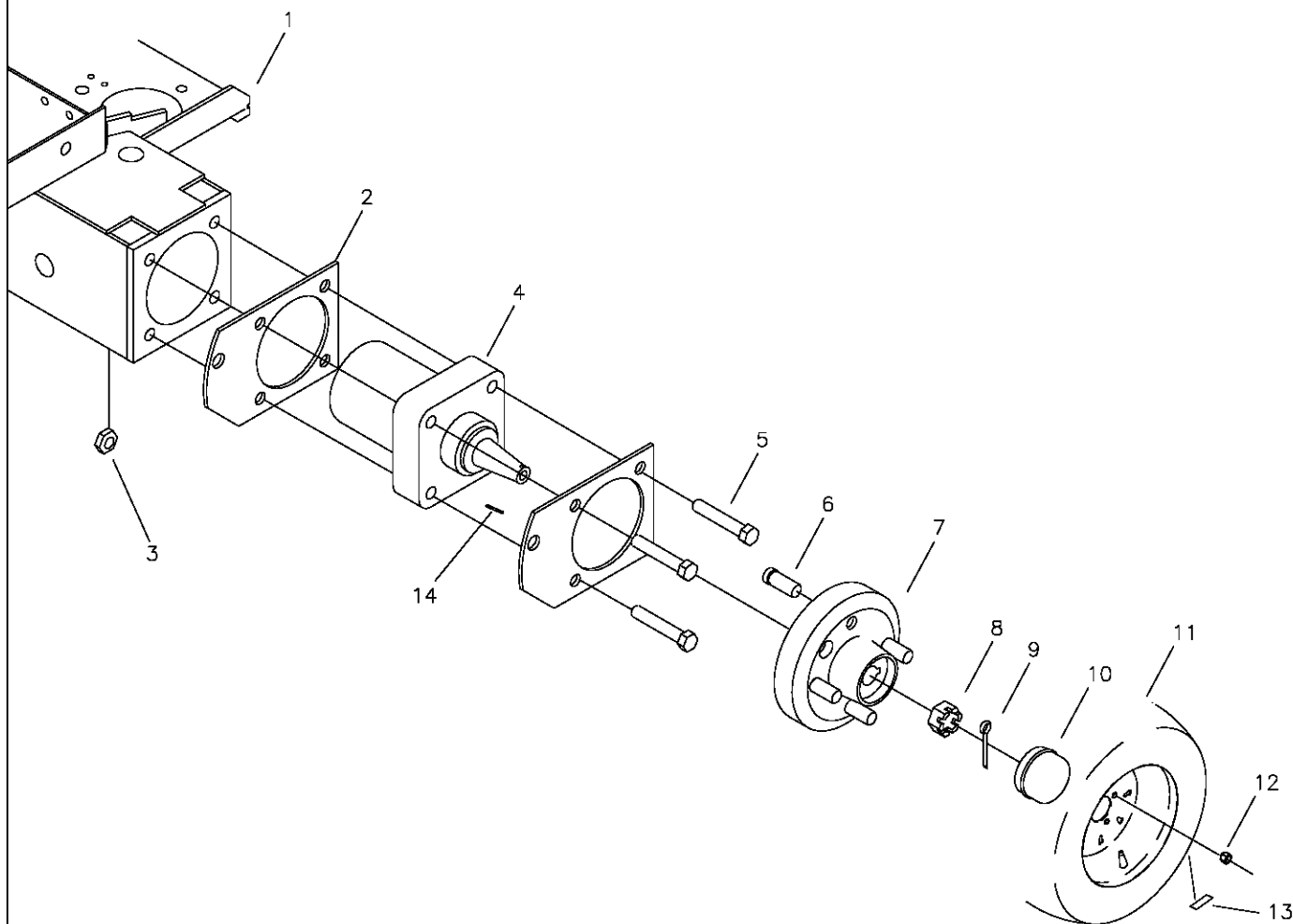
REF NO.	PART NO.	QTY.	DESCRIPTION	REF NO.	PART NO.	QTY.	DESCRIPTION
-	636-169A	1	LH DUAL LEVER ASSEMBLY	26	636-167P	1	TOP PLATE, DUALEVER
1	H-2080	1	END PLUG, 15/16" BLACK	27	F-1464	2	1/2" LOCK WASHER
2	H-2079	1	FOAM GRIP, 17"	28	F-1828	1	1/2-13 X 3-1/2" HHCS GR. 5
3	642-004A	1	CONTROL LEVER ASSEMBLY	29	F-1439	1	1/2-13 X 3" HHCS GR. 5
4	F-1125	3	5/16 LOCK NUT	30	F-1158	5	1/4-20 LOCK NUT
5	F-1015-17	2	5/16-18 X 1-1/2" HHCS GR. 5	31	F-1748	1	1/4-20 THIN NYLOC NUT
6	H-2089	1	HOSE CLAMP	32	663-051P	1	DAMPNER BOLT, 1/4-20 FEMALE
7	H-2081	1	BOOT, TAPERED 1" CUFF	33	638-028P	2	DAMPER BOLT, 5/16-18 X 3/4"
8	625-063P	1	LEVER, DUALEVER	34	663-022P	1	SHIFT ARM
9	F-1842	3	SETSCREW, 5/16-18 X 3/4"	35	H-2168	1	STEERING DAMPER
10	F-1489	2	1/2-13 JAM NUT	36	F-1610	2	E-RING FOR 1/4" SHAFT
11	H-2116	1	WASHER, FIBER	37	F-1228	1	1/4-20 SETSCREW
12	638-033P	1	PIVOT BLOCK, DUALEVER	38	F-1974	1	1/4-20 XD 3-1/2" BOLT GR 5
13	D-3622	2	BEARING	39	F-1539	3	1/4-20 X 1-1/4" HHCS GR. 5
14	F-1019-02	1	5/16" LOCK WASHER	40	663-050P	1	LINK ROD ASSEMBLY
15	F-1009-02	5	WASHER, FLAT STD. 5/16"				
16	638-034P	1	BASE DUALEVER				
17	F-1019-01	4	1/4" LOCK WASHER				
18	F-1015-05	1	1/4-20 X 1" HHCS GR. 5				
19	H-2465	1	1/4 X 5/16" SHOULDER WASHER				
20	H-2115	2	WASHER, SPRING				
21	625-070P	1	SHOULDER BOLT, 5/8" OD				
22	625-067P	1	BUSHING, STAND OFF				
23	625-064P	1	BUSHING, PIVOT BLOCK				
24	625-072P	1	WASHER, FLAT				
25	F-1995	2	GROMMET, NYLON				

# PARKING BRAKE ASSEMBLY & RELATED PARTS



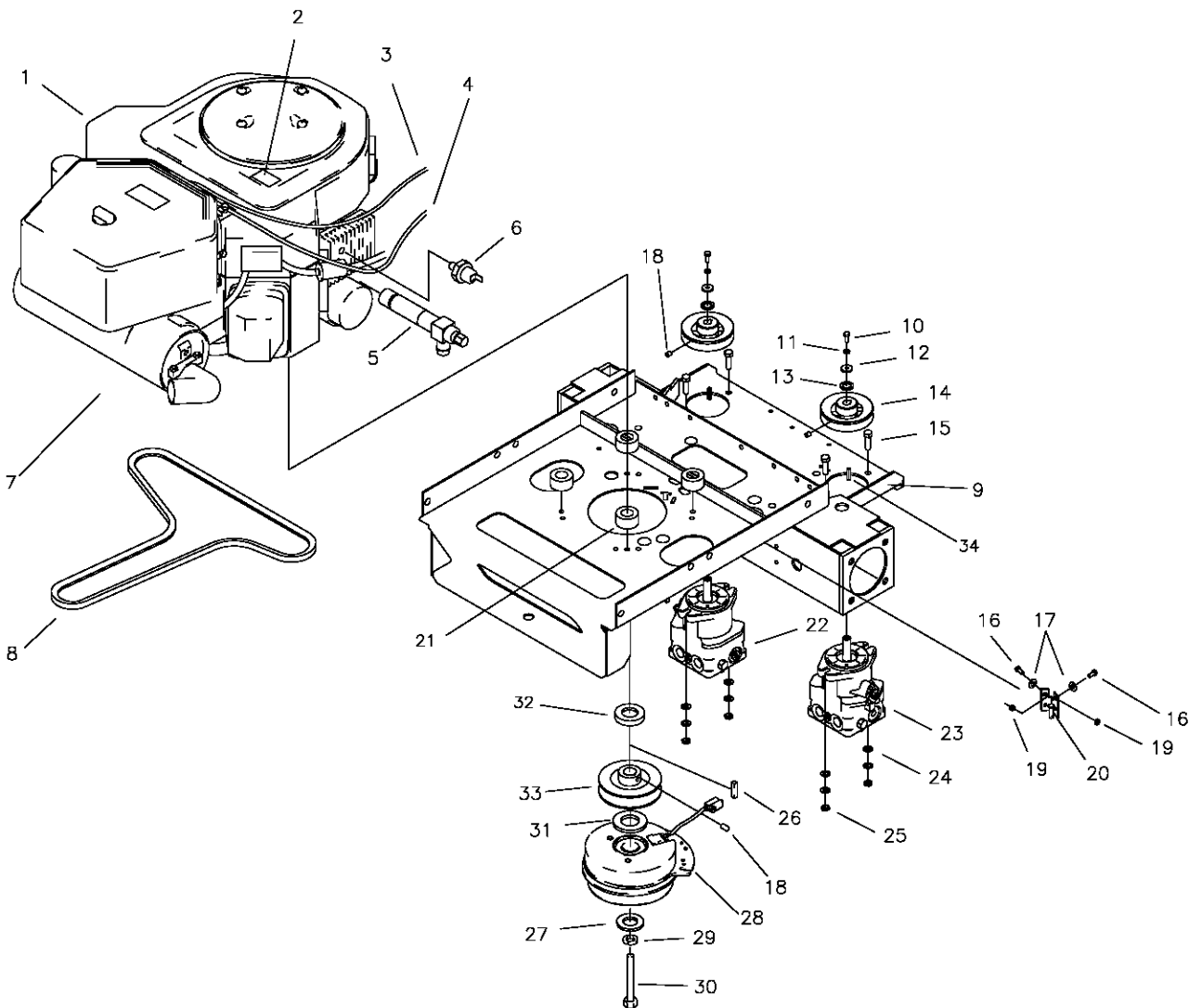
REF NO.	PART NO.	QTY.	DESCRIPTION
1	H-1635	1	3/4 X 4" SPRING
2	F-1125	3	5/16-18 STOVER NUT
3	F-1015-15	1	5/16-18 X 1" BOLT
4	663-024W	1	BRAKE ROD WLDT
5	F-1546	1	5/16-18 X 3/4" BOLT
6	H-2451	2	BRAKE LINK ROD ASSEMBLY
7	647-013W	2	BRAKE ARM WLDT
8	F-1492	2	5/16 X 3/8" RUE RING
9	F-1438	2	3/8 X 3/4" CLEVIS PIN
10	F-1553	2	5/16 X 7/8" ROLL PIN
11	647-029W	1	SHORT BRAKE ARM (LH)
12	647-028W	1	SHORT BRAKE ARM (RH)
13	647-010P	4	BRAKE ANCHOR LINK
14	F-1491	6	1/8 X 1" COTTER PIN
15	D-3668	2	BRAKE BAND 6" X 1" WIDE
16	F-1444	4	3/8 X 1 5/16" CLEVIS PIN
17	H-1926	1	GRIP HANDLE
18	663-062P	1	BRAKE SWITCH STOP
19	F-1158	2	1/4-20 STOVER NUT
20	F-1015-05	2	1/4-20 X 5/8 BOLT

## GEAR MOTOR, WHEEL ASSEMBLY



REF NO.	PART NO.	QTY.	DESCRIPTION
1	663-070W	1	MOTOR MOUNT
2	647-017P	4	BRAKE MOUNT
3	F-1005-05	8	1/2-13 STOVER NUT
4	D-3667	2	WHEEL MOTOR PARKER "TE" SERIES
5	F-1668	8	1/2-13 X 2 3/4" BOLT GR. 5
6	F-1654	8	WHEEL STUD (REPLACEMENT)
7	647-041P	2	WHEEL HUB
8	F-1909	2	3/4-16 CASTLE NUT
9	F-1396	2	1/8 X 1 1/2" COTTER PIN
10	H-1798	1	GREASE CAP
11	D-3637	2	TIRE/WHEEL ASSEMBLY ON 48" & 52" DECKS
-	D-3669	2	TIRE/WHEEL ASSEMBLY ON 60" DECKS
12	F-1499	8	LUG NUT 1/2-20 X 60 DEG.
13	P-11384	1	DECAL, 12 PSI
14	D-1004-01	2	1/4 X 1" KEY

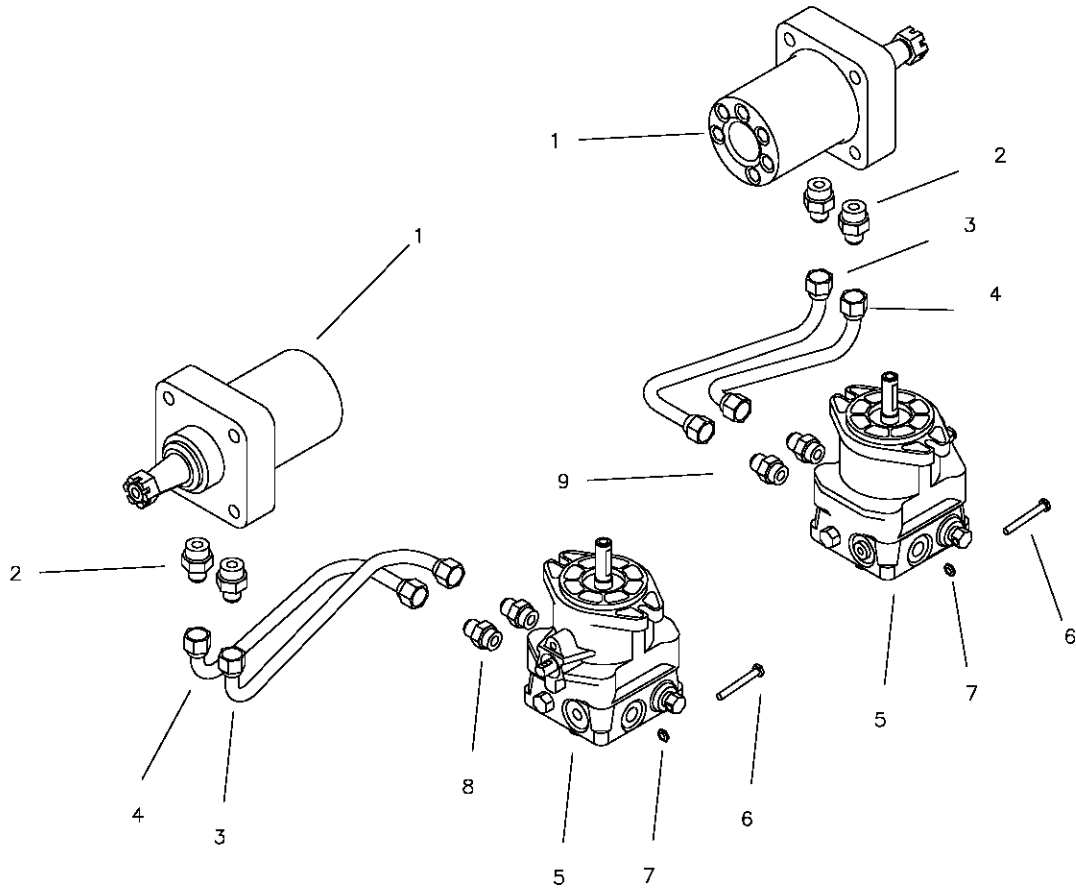
# MOTOR ASSEMBLY & RELATED PARTS



REF NO.	PART NO.	QTY.	DESCRIPTION	REF NO.	PART NO.	QTY.	DESCRIPTION
1	M-5325	1	23 HP. KOHLER ENGINE	19	F-1158	2	1/4-20 STOVER NUT
-	M-5376	1	26 HP. KAWASAKI ENGINE	20	659-015W	1	CLUTCH STOP WELDMENT
-	M-5335	1	27 HP. KOHLER ENGINE	21	H-2046	4	SPACER (26HP KAWASAKI)
2	P-10077	1	DECAL, "CLEAN"	22	D-3770-02	1	HYDRO PUMP (RH)
3	H-2235	1	CHOKE CABLE (26HP KAWASAKI)	23	D-3770-01	1	HYDRO PUMP (LH)
-	H-2404	1	CHOKE CABLE(23HP & 27HP KOHLER)	24	F-1009-03	8	3/8" FLAT WASHER
4	H-2610	1	THROTTLE CABLE	25	F-1005-03	4	3/8-16 STOVER NUT
5	H-2589	1	OIL DRAIN (23HP & 27HP KOHLER)	26	621-113P	1	KEY, 1/4" SQ. X 1 1/4"
-	H-2590	1	OIL DRAIN (26HP KAWASAKI)	27	606-347P	1	15/32" I.D. WASHER
6	E-6307	1	OIL PRESSURE SWITCH (23HP KOHLER)	28	E-6247	1	1 1/8" CLUTCH BRAKE
7	H-2607	1	MUFFLER ASSEMBLY (KAWASAKI)	29	F-1019-04	1	7/16 LOCK WASHER
8	D-3769	1	V-BELT A-67 KEVLAR	30	F-1766	1	7/16-20 X 3-1/4" BOLT GR. 5
9	663-070W	1	MOTOR MOUNT	31	611-143P	1	1 1/8" 10 GA. WASHER
10	F-1737	2	6mm X 16mm BOLT GR. 5	32	663-071P	1	SPACER (26HP KAWASAKI)
11	F-1738	2	6mm SPRING WASHER	33	647-036P	1	MOTOR PULLEY
12	F-1736	2	WASHER, .840 X .246 X .125	34	D-3541	2	KEY - 5mm x 20mm
13	663-046P	2	WASHER, SPACER				
14	647-035P	2	HYDRO PUMP PULLEY				
15	F-1307	4	3/8-16 X 1 1/4" BOLT GR. 5				
16	F-1015-02	2	1/4-20 X 5/8" BOLT GR. 5				
17	F-1009-01	2	1/4" FLAT WASHER				
18	F-1228	2	1/4-20 NYLOC SETSCREW				



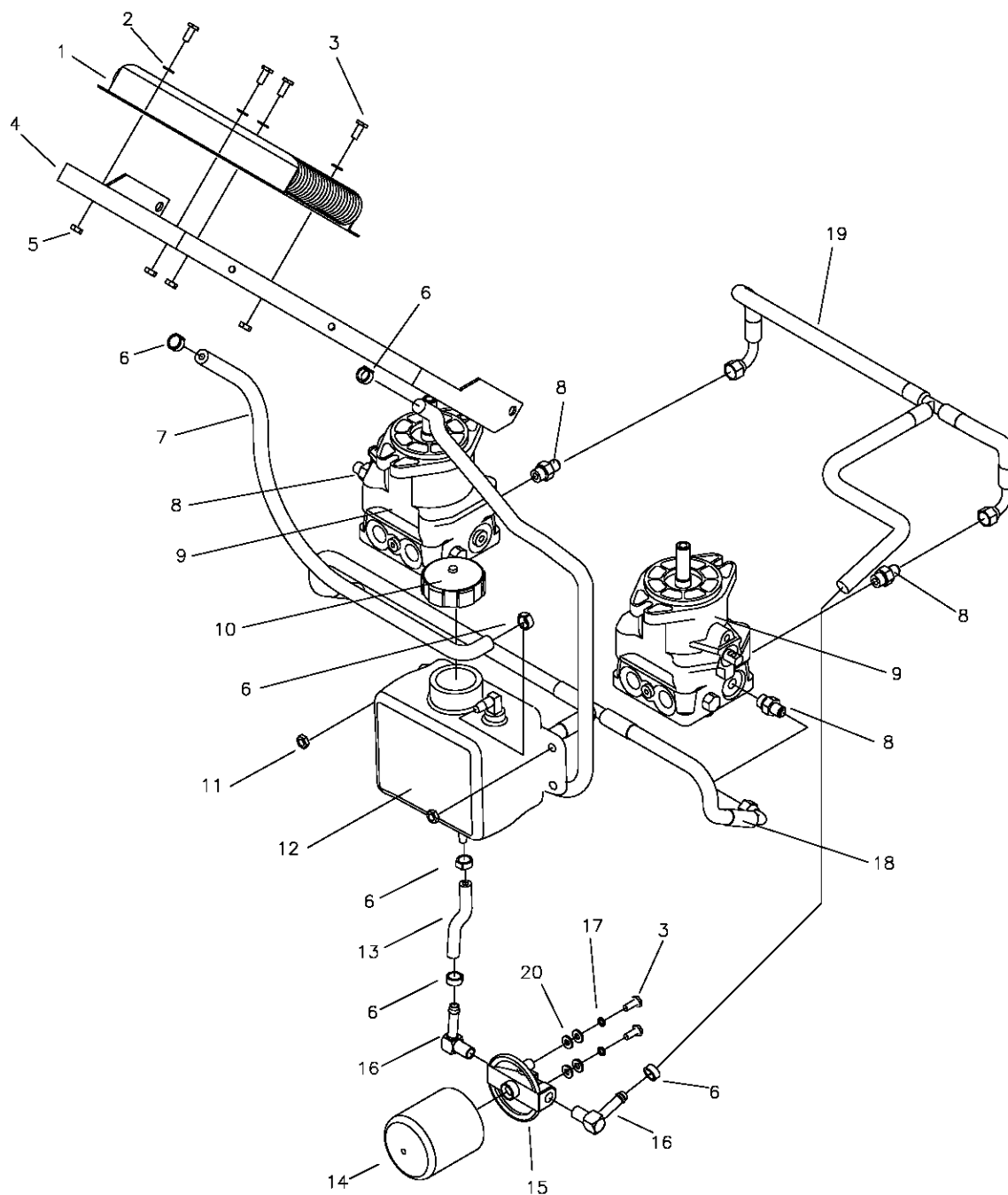
## HIGH PRESSURE LINES & FITTINGS



VIEWED FROM FRONT RIGHT

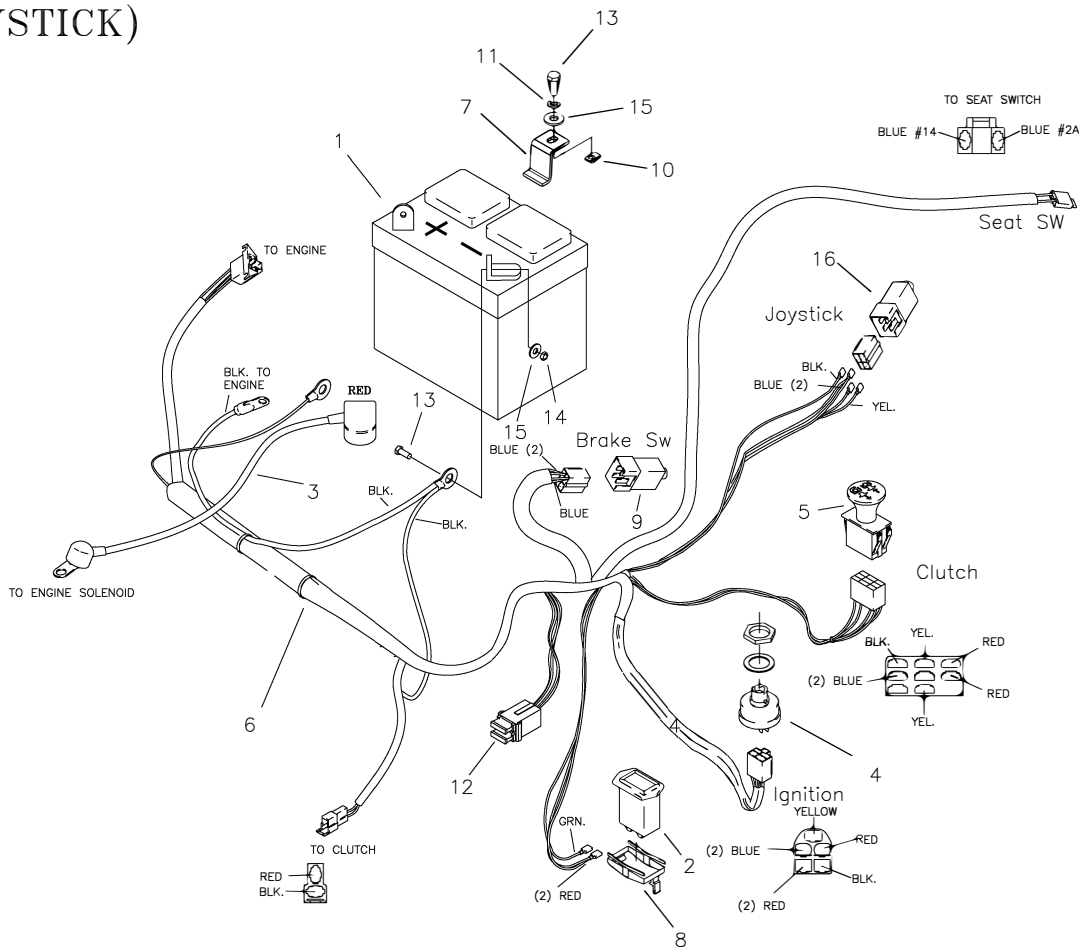
REF NO.	PART NO.	QTY.	DESCRIPTION
1	D-3667	2	WHEEL MOTOR PARKER "TE" SERIES
2	H-2319	4	FITTING, STRIGHT, 7/8-14
3	H-2491	2	TUBE ASS'Y, LH. FORWARD
4	H-2492	2	TUBE ASS'Y, LH. REVERSE
5	-----	-	SEE PAGE 3-19
6	F-1015-09	2	1/4-20 X 2" BOLT GR. 5
7	F-1158	2	1/4-20 STOVER NUT
8	H-2436	4	FITTING, STRAIGHT, 3/4" X 1/2"

# OIL RETURN LINES & COOLER ASSEMBLY



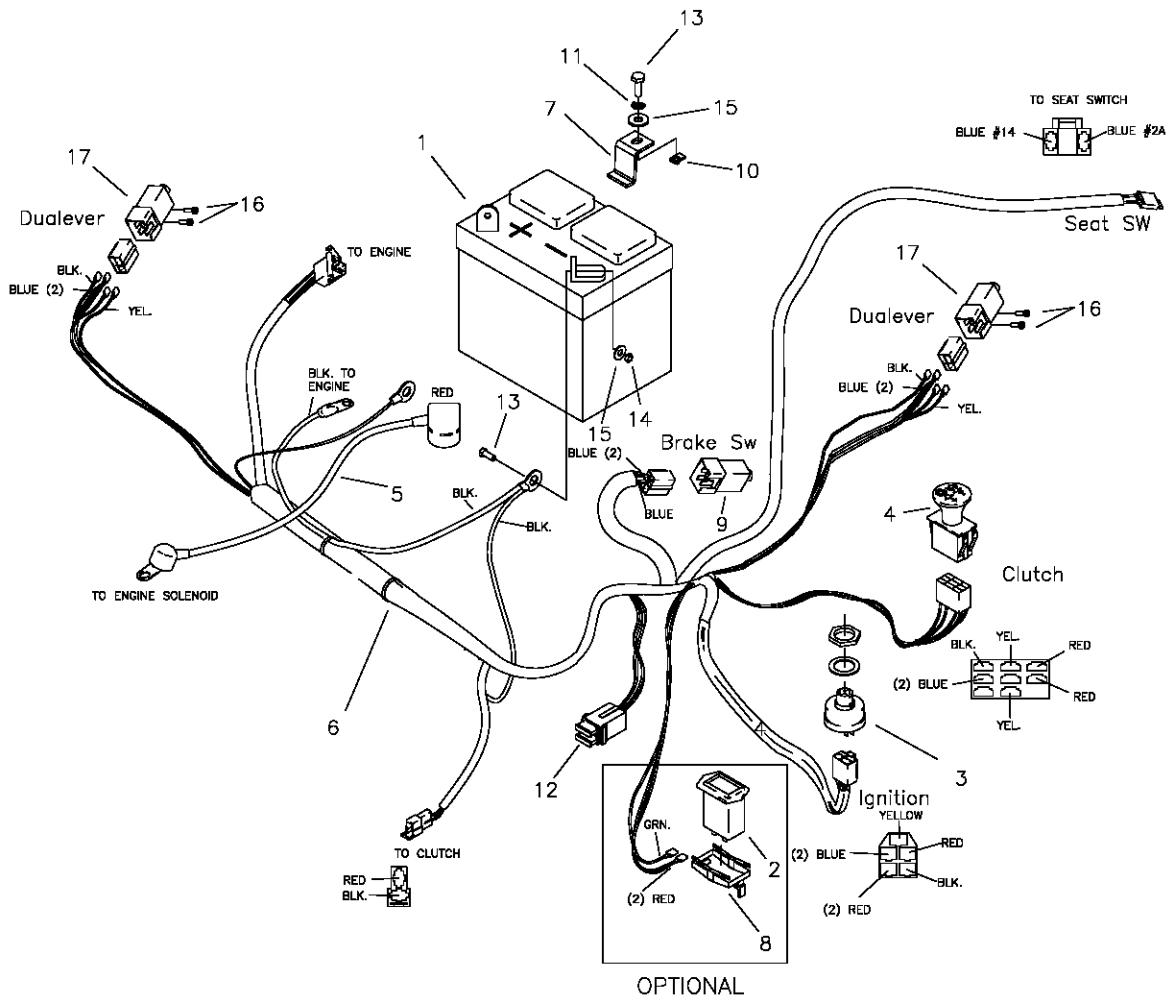
REF NO.	PART NO.	QTY.	DESCRIPTION	REF NO.	PART NO.	QTY.	DESCRIPTION
1	H-2325	1	OIL COOLER	11	F-1125	2	5/16-18 STOVER NUT
2	F-1009-01	4	1/4" WASHER	12	H-2447	1	OIL TANK
3	F-1015-02	6	1/4-20 X 5/8" BOLT GR. 5	13	H-2437	1	4 1/4" HOSE, 3/8 id. HI TEMP.
4	647-046W	1	OIL COOLER BRACKET	14	H-2026	1	OIL FILTER
5	F-1158	4	1/4-20 STOVER NUT	15	H-2061	1	FILTER BASE
6	H-2282	6	HOSE CLAMP	16	H-1859	2	HOSE BARB 90 DEG. ELBOW
7	H-2438	1	24" HOSE, 3/8" ID. HI TEMP.	17	F-1019-01	2	1/4" LOCK WASHER
8	H-2330	4	9/16" ADAPTER	18	H-2440	1	RETURN HOSE TEE ASSEMBLY
9	-----	-	SEE PAGE 3-19	19	H-2439	1	SUCTION HOSE TEE ASSEMBLY
10	H-2120	1	VENT CAP	20	F-1009-01	4	1/4" FLAT WASHER

# E-6415 WIRE HARNESS & RELATED PARTS (JOYSTICK)



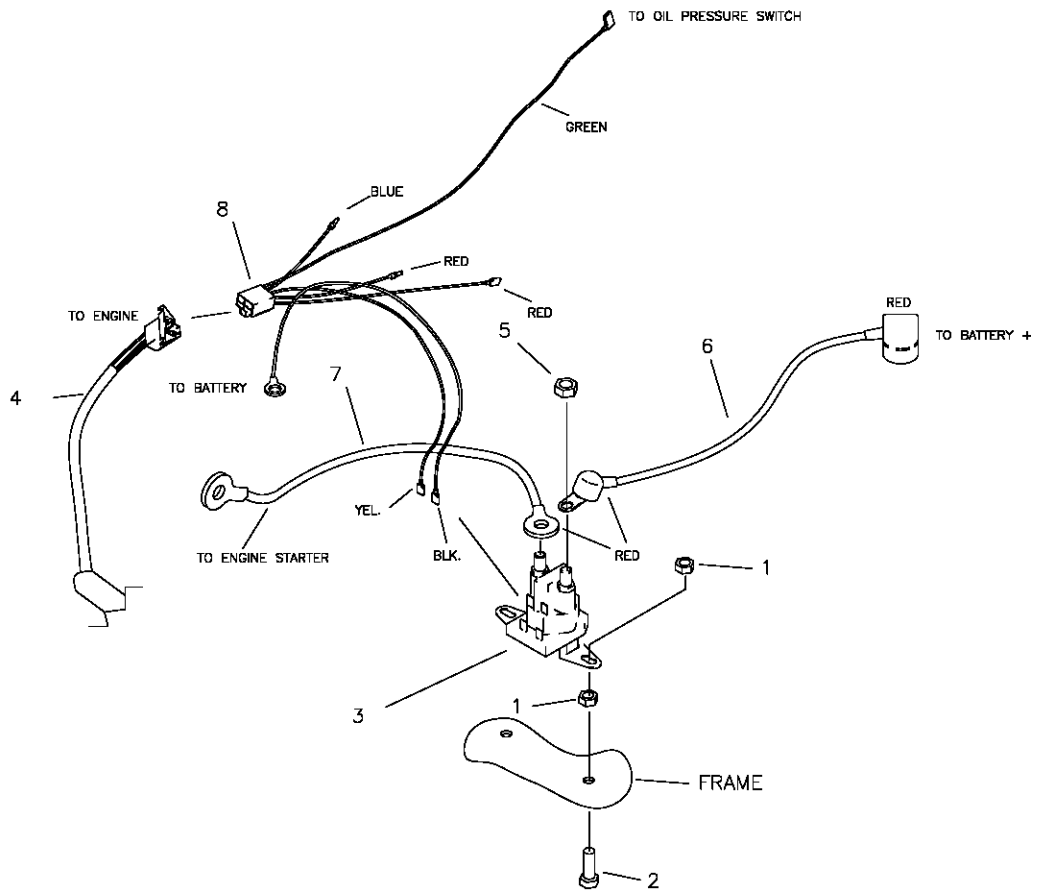
REF NO.	PART NO.	QTY.	DESCRIPTION
1	E-5812	1	BATTERY
2	E-5878	1	HOUR METER
3	E-6418	1	CABLE, BATTERY TO SOLENOID
4	E-5873	1	START SWITCH
5	E-6403	1	CLUTCH SWITCH
6	E-6415	1	WIRE HARNESS (JOYSTICK)
7	659-137P	1	BATTERY HOLD DOWN
8	E-6369	1	RETAINER CLIP
9	E-6297	2	BRAKE SWITCH
10	F-1858	1	1/4-20 U-NUT
11	F-1019-01	1	1/4" LOCK WASHER
12	E-6207	2	FUSE, #ATC-30
13	F-1538	3	1/4-20 X 3/4" GR. 5
14	F-1158	2	1/4-20 LOCK NUT
15	F-1009-01	5	1/4" FLAT WASHER
16	E-6474	1	JOYSTICK SWITCH
	E-6281	1	COVER (KEY SWITCH) -NOT SHOWN-

# E-6416 WIRE HARNESS & RELATED PARTS



REF NO.	PART NO.	QTY.	DESCRIPTION
1	E-5812	1	BATTERY
2	E-5878	1	HOUR METER
3	E-5873	1	START SWITCH
4	E-6403	1	CLUTCH SWITCH
5	E-6418	1	CABLE, BATTERY TO SOLENOID
6	E-6405	1	WIRE HARNESS
7	659-137P	1	BATTERY HOLD DOWN
8	E-6369	1	RETAINER CLIP
9	E-6297	3	BRAKE SWITCH
10	F-1858	1	1/4-20 U-NUT
11	F-1019-01	1	1/4" LOCK WASHER
12	E-6207	2	FUSE, #ATC-30
13	F-1538	3	1/4-20 X 3/4" GR. 5
14	F-1158	2	1/4-20 LOCK NUT
15	F-1009-01	5	1/4" FLAT WASHER
16	F-1994	4	#10 SCREW, 5/8" LONG
17	647-112A	2	SWITCH ARM ASSEMBLY
	E-6281	1	COVER (KEY SWITCH) -NOT SHOWN-

# E-6417 KAWASAKI ADAPTER HARNESS & RELATED PARTS



REF NO.	PART NO.	QTY.	DESCRIPTION
1	F-1158	4	1/4-20 LOCK NUT
2	F-1015-05	2	1/4-20 X 1" GR. 5
3	E-6054	1	SOLENOID
4	E-6415 or E-6416	1	KOHLER WIRE HARNESS (JOYSTICK) KOHLER WIRE HARNESS (TWINSTICK)
5	F-1011-01	2	1/4-20 NUT
6	E-6418	1	CABLE, BATTERY TO SOLENOID
7	E-6419	1	CABLE, SOLENOID TO ENGINE
8	E-6417	1	KAWASAKI HARNESS ADAPTER