

REPAIR PARTS MANUAL

for

COUNTRY CLIPPER[®]

JAZZEE[™]

SR210

**JAZZEE[™]
PRO**

SR360



**COUNTRY CLIPPER
"JAZEE "
AND
"JAZEE PRO"
ZERO TURN RADIUS MOWER**

TABLE OF CONTENTS

PAGE.... CONTENTS

SECTION 1 - MOWER DECKS AND RELATED PARTS

- 1-1 DOUBLE IDLER STYLE DECK ASSEMBLY
- 1-2 DECK SPINDLE ASSEMBLY
- 1-3 DOUBLE IDLER STYLE DRIVE BELT IDLER & RELATED PARTS
- 1-4 LIFT HANDLE ASSEMBLY & RELATED PARTS
- 1-5 LIFT ASSEMBLY & RELATED PARTS
- 1-6 TRANSMISSION IDLERS & RELATED PARTS

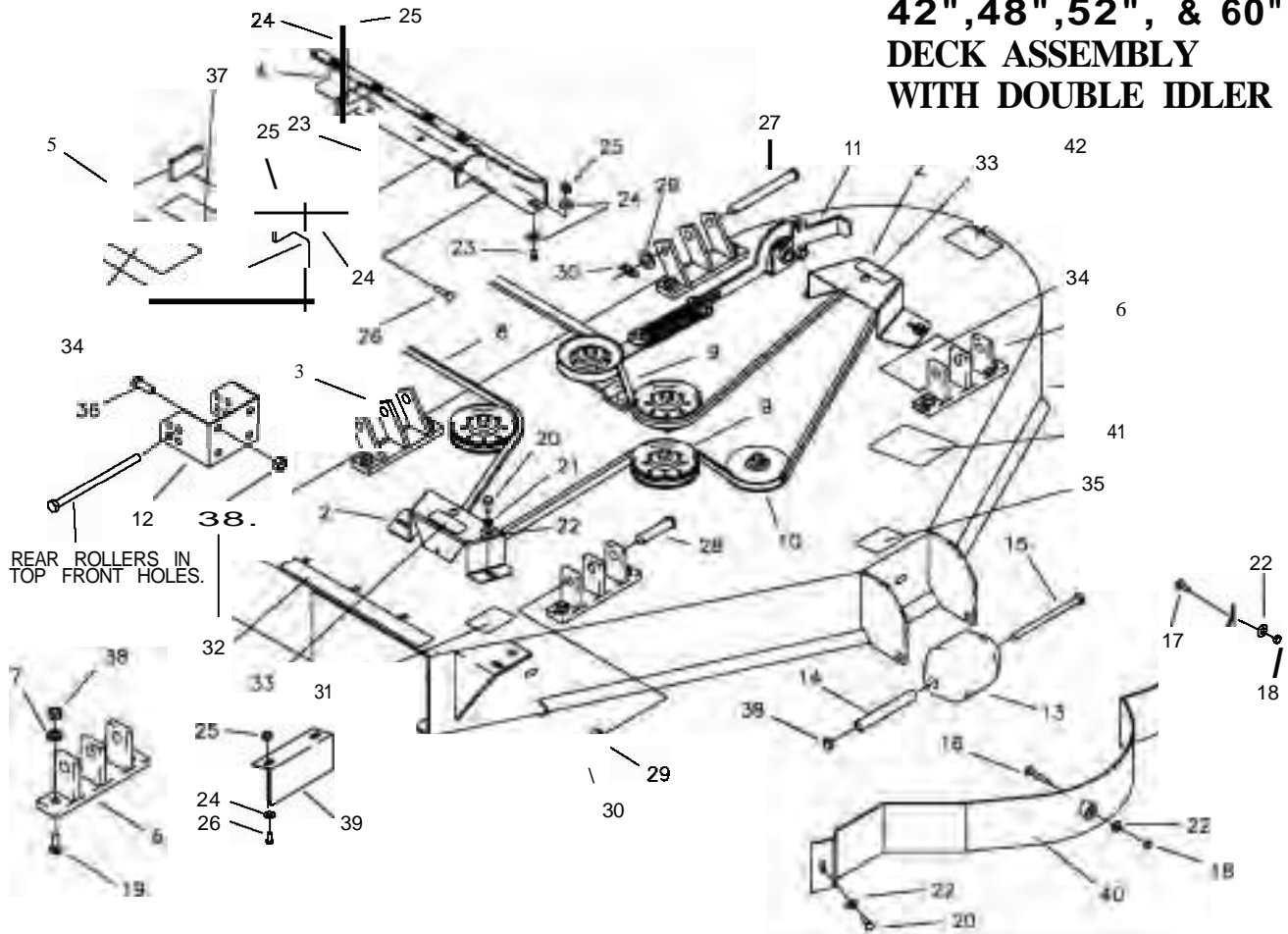
SECTION 2 -TRACTOR FRAME AND RELATED PARTS

- 2-7 CASTER WHEEL ASSEMBLY
- 2-8 FRAME SIDES & RELATED PARTS FOR JAZEE SR210
- 2-9 FRAME SIDES & RELATED PARTS FOR JAZEE PRO SR360
- 2-10 FENDER ASSEMBLY
- 2-11 SEAT, FOOT DECK & RELATED PARTS
- 2-12 FRONT STEP & RELATED PARTS FOR JAZEE PRO SR360

SECTION 3 -TRACTOR DRIVE AND RELATED PARTS

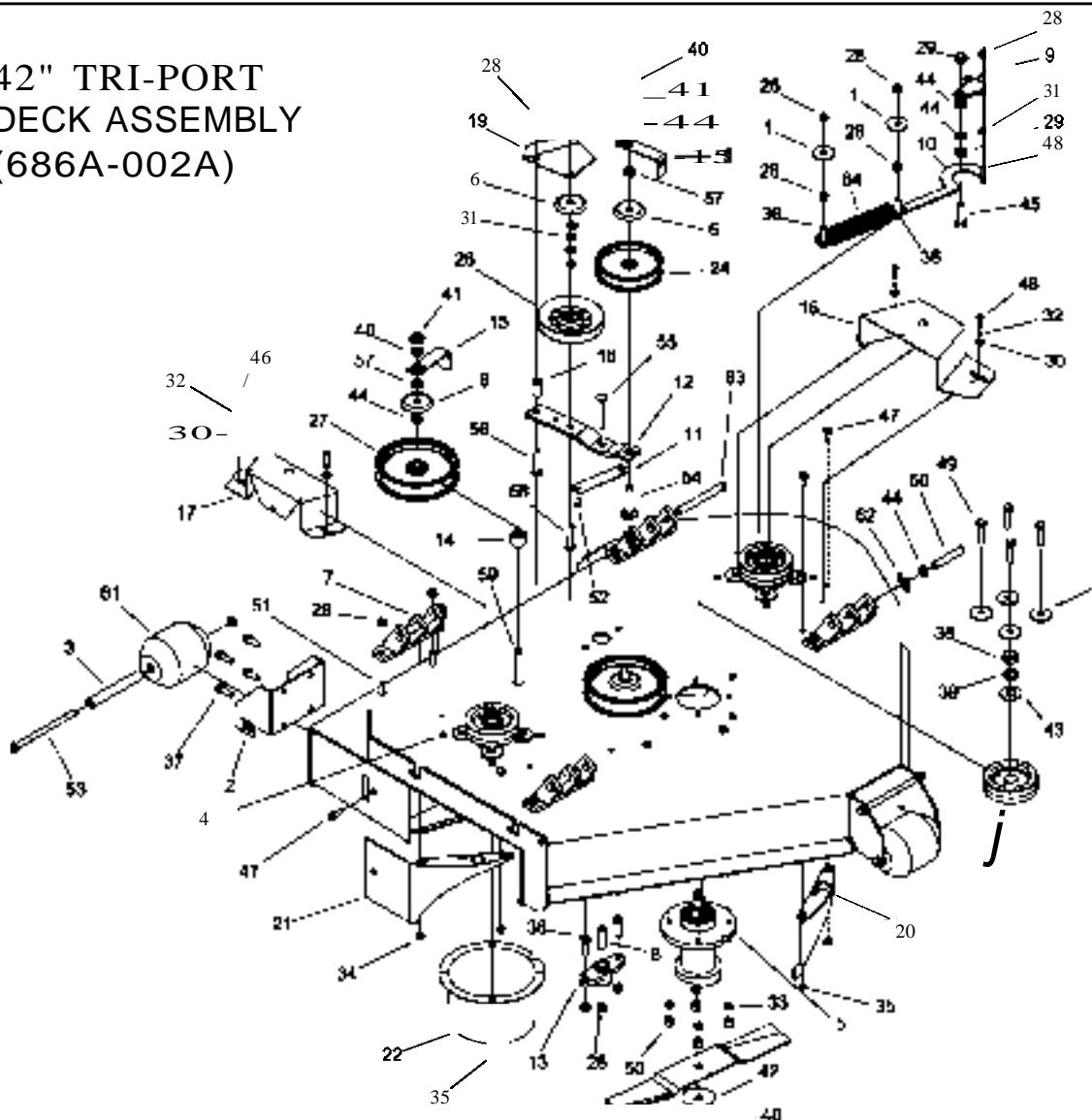
- 3-13 FUEL TANK ASSEMBLY
- 3-14 JOYSTICK STEERING CONTROL & RELATED PARTS
- 3-15 JOYSTICK STEERING CONTROL & RELATED PARTS FOR JAZEE SR210
- 3-16 JOYSTICK STEERING CONTROL & RELATED PARTS FOR JAZEE PRO SR360
- 3-17 RIGHT HAND STEERING CONTROL AND RELATED PARTS
- 3-18 LEFT HAND STEERING CONTROL AND RELATED PARTS
- 3-19 PARKING BRAKE ASSEMBLY & RELATED PARTS FOR JAZEE SR210
- 3-20 PARKING BRAKE ASSEMBLY & RELATED PARTS FOR JAZEE PRO SR360
- 3-21 MOTOR AND TRANSMISSION ASSEMBLY & RELATED PARTS FOR JAZEE SR210
- 3-22 MOTOR AND TRANSMISSION ASSEMBLY & RELATED PARTS FOR JAZEE PRO SR360
- 3-23 E-6405 WIRE HARNESS & RELATED PARTS (20 HP,26 HP BRIGGS, & 27HP KOHLER)
- 3-24 E-6415 WIRE HARNESS & RELATED PARTS (21 HP)
- 3-25 E-6416 WIRE HARNESS & RELATED PARTS (21 HP)
- 3-26 E-6417 KAWASAKI ADAPTER HARNESS & RELATED PARTS
- 3-27 E-6436 ADAPTER HARNESS & RELATED PARTS (20HP,26HP BRIGGS & 27HP KOHLER)

42", 48", 52", & 60" DECK ASSEMBLY WITH DOUBLE IDLER



REF NO.	PART NO.	QTY.	DESCRIPTION	REF NO.	PART NO.	QTY.	DESCRIPTION
	660L-003W	1	42" DECK (COMPLETE ASSEMBLY 660L-002A)	23	F-1671	4	CARRIAGE 80LT 5/16 X 3/4
	660K-003W	1	48" DECK (COMPLETE ASSEMBLY 660K-002A)	24	F-1009-02	8	5/16" FLAT WASHER
	6601-003W	1	52" DECK (COMPLETE ASSEMBLY 6601-002A)	25	F-1125	7	5/16-18 LOCKNUT
	660J-003W	1	60" DECK (COMPLETE ASSEMBLY 660J-002A)	26	F-1015-15	6	5/16-18 X 1" GR. 5
2	660-047P	1	42" LH PULLEY COVER (W/DECAL 66D-D52A)	27	H-2240	2	PIN, 1/2" X 4-1/2"
	660-048P	1	42" RH PULLEY COVER (W/DECAL 66D-D53A)	28	F-1889	2	PIN, 1/2" X 2-1/2"
	660-049P	1	48" & 52" LH PULLEY COVER (W/DECAL 860-054A)	29	F-1521	7	1/2" FLAT WASHER
	660-050P	1	48" & 52" RH PULLEY COVER (W/DECAL 660-055A)	30	H-2239	4	RUE RING 1/2"
	668-016P	2	60" PULLEY COVER (W/DECAL 668-024A)	31	P-10947	1	DECAL. "GREASE SPINOLE"
3	651-009W	2	DECK HANGER	32	P-10122	1	DECAL. "MISSING CHUTE"
4	649-012W	1	OUTLET STIFFENER	33	P-10935	2	DECAL. "ROTATING..."
5	649-007W	1	DECK CHUTE (W/DECAL 649-054A)	34	P-10941	2	DECAL. "MULTI PERIL"
6	643-016W	2	DECK HANGER	35	P-11413	1	DECAL. "HOIST POINT"
7	F-1019-03	8	3/8 LOCK WASHER	36	F-1394	12	3/8-16 X 1" GR. 5
8	D-3727-W	1	V-BELT, A-144, WRAPPED (42")	37	P-10937	1	DECAL. "WARNING"
	D-3775-W	1	V-BELT, A-158, WRAPPED (48")	38	F-1005-03	13	LOCKNUT, 3/8 STOVER
	D-3776-W	1	V-BELT, B-180, WRAPPED (52" & 60")	39	651-023P	1	AIR BAFFLE (42")
9			DOUBLE IDLER ASSEMBLY (SEE PG.1-3)		629-230P	1	AIR BAFFLE (48" & 52")
10		3	SPINOLE ASSEMBLY (SEE PG.1-2)		643-042P	1	AIR BAFFLE (60")
11			BELT TIGHTING SYSTEM (SEE PG.1-3)	40	651-022W	1	DUST BAFFLE WLDT. 42"
12	637-006P	2	REAR SCALPER BRACKET (42")		629-241W	1	DUST BAFFLE WLDT. 48"
13	H-1948	5	ROLLER, 3-3/4 DIA. X 4-13/16		629-229W	1	DUST BAFFLE WLDT. 52"
14	609-183P	5	WHEEL BUSHING		643-047W	1	DUST BAFFLE WLDT. 60"
15	F-1741	3	3/8-16 X 6" GR. 5	41	P-11932	1	DECAL. BELT ROUTING
16	F-1935	1	CARRIAGE BOLT, 1/4 X 1 1/2	42	P-11949	1	DECAL, DECK SIZE 42"
17	F-1823	1	CARRIAGE BOLT, 1/4 X 3/4		P-11950	1	DECAL, DECK SIZE 48"
18	F-1158	2	LOCKNUT, 1/4-20		P-11951	1	DECAL, DECK SIZE 52"
19	F-1672	8	CARRIAGE BOLT, 3/8 X 1-1/4		P-11952	1	DECAL, DECK SIZE 60"
20	F-1538	4	1/4-20 X 3/4 GR. 5				
21	F-1019-01	4	1/4" LOCKWASHER				
22	F-1009-01	7	1 4" FLAT WASHER				

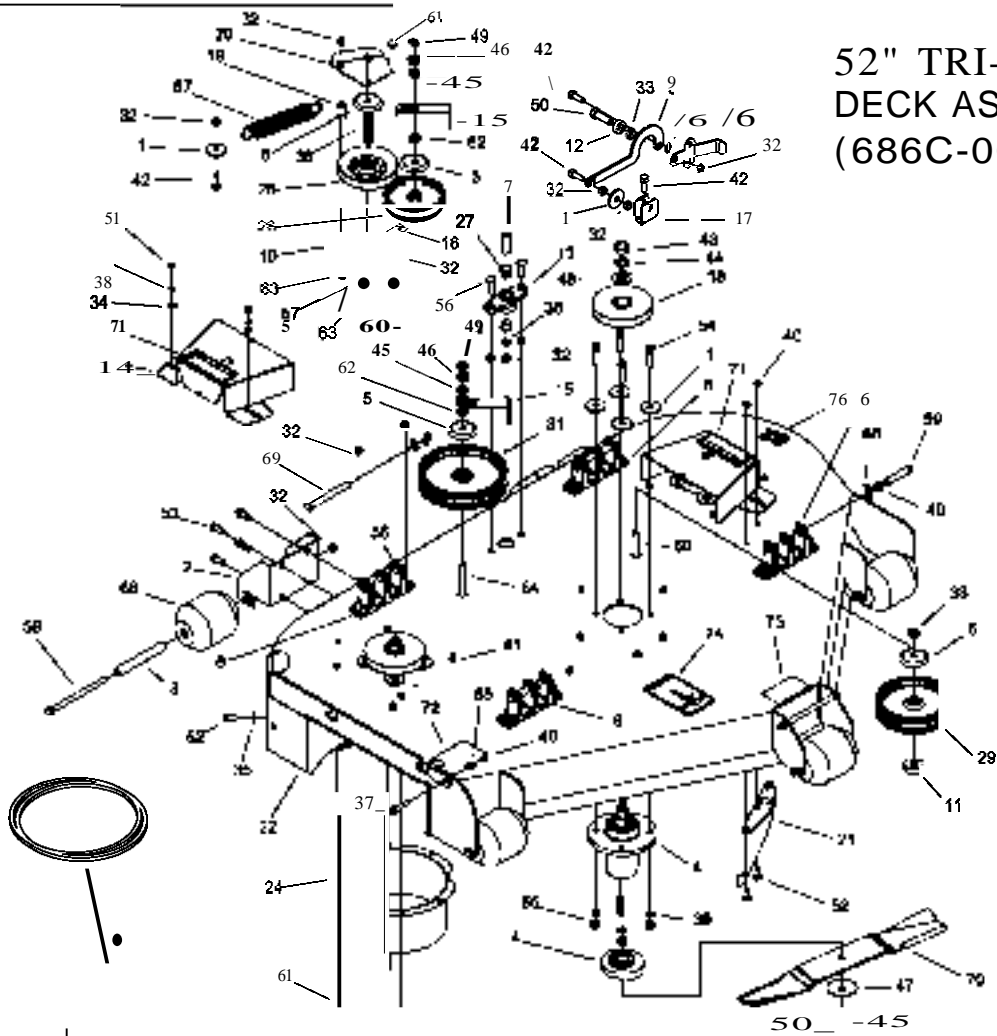
42" TRI-PORT DECK ASSEMBLY (686A-002A)



REF NO.	PART NO.	QTY.	DESCRIPTION
1	606-034P	14	SPINDLE SPACER WASHER
2	609-182P	2	REAR CENTER BRACKET
3	609-183P	3	BUSHING
4	609-266P	3	DECK PULLEY, 3.75
5	609F-019A	3	DECK SPINDLE ASSEMBLY
●	620-201P	4	WASHER, BEARING CAP
7	651-009W	4	DECK MOUNT WELDMENT
●	6S9-08SP	1	MOUNTING PIN
J	660-030P	1	BELT TIGHTENER HANDLE
10	660-031P	1	BELT TIGHTENER ARM
11	660-035P	1	EXTENSION FOR SPRING
12	660-036P	1	IDLER ARM
13	660-039P	1	DOUBLE IDLER MOUNT
14	660-083P	2	SPACER
15	660-084P	2	BELT KEEPER
16	660-047P	1	PULLEY COVER
17	660-048P	1	PULLEY COVER
J*	668-021P	1	BELT GUARD COVER
J*	668-029P	1	BELT GUARD
20	686-006W	2	SPUTTER WELDMENT
21	686-018W	1	DISCHARGE BAFFLE WELDMENT
22	686-050W	3	6" TUBE WELDMENT
23	686A-003W	1	42" DECK SHELL WELDMENT
24	0-3338	1	FLAT PULLEY IDLER
25	0-3730	2	FLANGED BUSHING 5/8" BORE
2.	0-3758	1	3/4" IDLER PULLEY
27	0-3774	2	IDLER PULLEY
2.	F-1005-03	30	3/8-16 STOVER NUT
2.	F-1005-05	2	1/2-13 STOVER NUT
30	F-1009-01	4	1/4" FLAT WASHER
31	F-1009-03	●	3/8" FLAT WASHER
32	F-1019-01	4	1 4" LOCK WASHER

REF NO.	PART NO.	QTY.	DESCRIPTION
33	F-1019-03	12	3/8" LOCK WASHER
34	F-1125	●	5/16-18 STOVER NUT
35	F-1158	13	1/4-20 STOVER NUT
3.	F-1307	4	3/8-16 x 1-1/4" CAPSCREW
37	F-1394	●	3/8-16 x 1" CAPSCREW
3*	F-1461	3	3/4-16 JAM NUT
39	F-1463	3	3/4" LOCK WASHER
40	F-1464	5	1/2" LOCK WASHER
41	F-1459	2	1/2-13 HEX NUT
42	F-1507	3	1/2" CUPPED WASHER
43	F-1510	3	3/4" FLAT WASHER
44	F-1521	●	1/2" WASHER
45	F-1526	4	1/2-13 x 1-1/2" CAPSCREW
4.	F-1538	J*	1/4-20 x 3/4" CAPSCREW
47	F-1546	7	5/16-18 x 3/4" CAPSCREW
4.	F-1558	1	3/8-16 x 7/8" CAPSCREW
49	F-1572	12	3/8-24 x 1-1/2" CAPSCREW
50	F-1573	12	3/8-24 LOCK NUT
51	F-1672	●	3/8-16 x 1-1/4" CARRIAGE BOLT
52	F-1733	1	1/4" x 1/2" DRIVE SCREW
53	F-1741	4	3/8-16 x 6" CAPSCREW
54	F-1822	1	1/2-13 x 2-1/4" CARRIAGE BOLT
55	F-1865	1	3/8-16 x 2-1/2" CARRIAGE BOLT
5.	F-1889	2	1/2" x 2-5/8" CLEAVIS PIN
57	F-1966	3	1/2-13 THIN NYLOC NUT
5.	F-1976	2	3/8-16 x 1-1/2" CARRIAGE BOLT
5.	F-2047	2	1/2-13 x 3" CARRIAGE BOLT
.0	H-1715	3	15" HIGH LIFT BLADE
1	H-1948	3	3-3/4" x 4-13/16" ROLLER
.2	H-2239	4	1/2" RUE RING
.3	H-2240	2	1/2" x 4-1/2" CLEAVIS PIN
.4	H-2092	1	1-1 4" x 5" EXTENTION SPRING

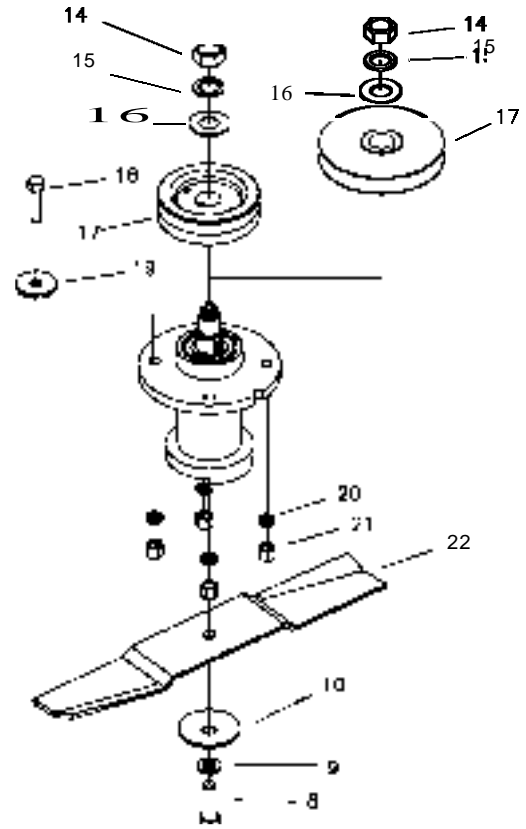
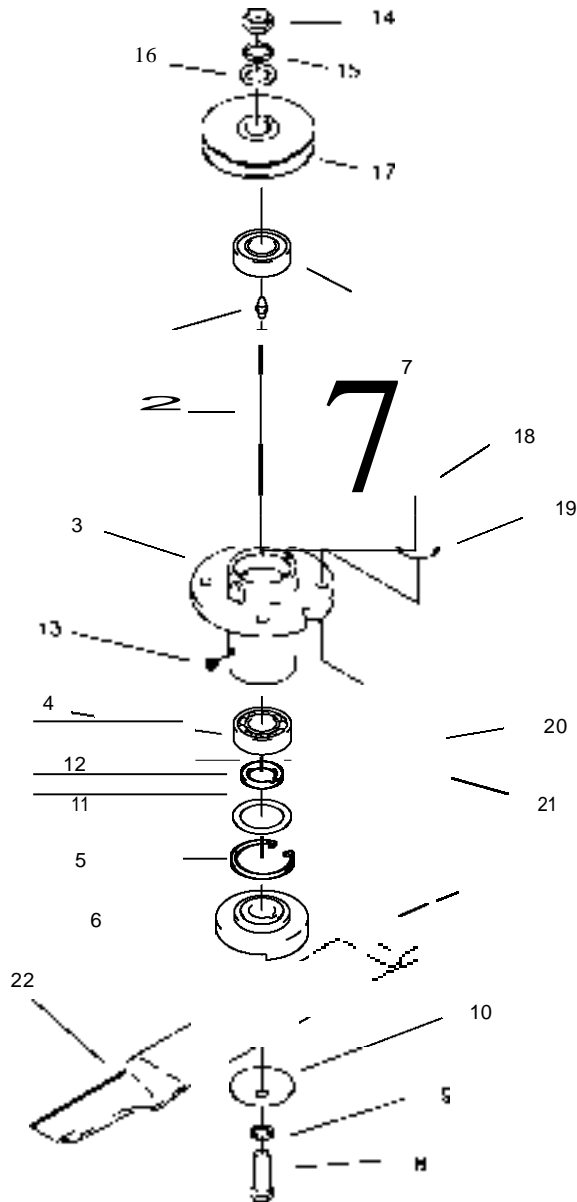
52" TRI-PORT
DECK ASSEMBLY
(686C-002A)



REF NO.	PART NO.	QTY.	DESCRIPTION
1	606-034P	14	SPINDLE SPACER WASHER
2	609-1B2P	2	REAR CENTER BRACKET
3	S09-1B3P	3	BUSHING
4	S09F-019A	3	DECK SPINDLE ASSEMBLY
5	620-201P	4	WASHER, BEARING CAP
6	643-016W	4	HANGER WELDMENT
7	659-0B5P	1	MOUNTING PIN
8	660-030P	1	BELT TIGHTENER HANDLE
9	660-031P	1	BELT TIGHTENER ARM
10	660-036P	1	IDLER ARM
11	SSO-037P	2	1/2- WIDE SPACER
12	SSO-03BP	1	3/8" WIDE SPACER
13	SSO-039P	1	DOUBLE IDLER MOUNT
14	SSO-049P	2	PULLEY COVER
15	660-060P	2	BELT KEEPER
16	660-0B1P	1	EXTENTION FOR SPRING
17	661-015P	1	SHACKLE
18	66B-013P	3	52- PULLEY
19	66B-021P	1	BELT GUARD SPACER
20	66B-029P	1	BELT GUARD
21	6B6-006W	2	SPUTIER WELDMENT
22	SBS-01BW	1	DISCHARGE BAFFLE WELDMENT
24	SBS-059W	3	8" TUBE WELDMENT
25	SBSC-003W	1	52- DECK SHELL WELDMENT
26	D-3338	1	FLAT PULLEY IDLER
27	D-3730	2	FLANGED BUSHING 5/B- BORE
28	0-3758	1	3/4"-IDLER PULLEY
29	0-3774	2	IDLER PULLEY
30	0-3776	1	BELT, B-180
31	0-3815	1	PULLEY
32	F-1005-03	32	3/8-16 STOVER NUT
33	F-1005-05	2	1/2-13 STOVER NUT
34	F-1009-01	4	1/4" FLAT WASHER
35	F-1009-02	1	5/16- FLAT WASHER
36	F-1009-03	6	3/8" FLAT WASHER
37	F-1015-17	1	5/16-1B x 1-1/2" CAPSCREW
38	F-1019-01	4	1/4" LOCK WASHER
39	F-1019-03	12	3/8" LOCK WASHER
40	F-1125	7	5 16-18 STOVER NUT

REF NO.	PART NO.	QTY.	DESCRIPTION
41	F-1158	12	1/4-20 STOVER NUT
42	F-1394	4	3/8-16 x 1" CAPSCREW
43	F-1461	3	3/4-16 JAM NUT
44	F-1463	3	3/4" LOCK WASHER
45	F-1464	5	1/2" LOCK WASHER
46	F-1489	2	1/2-13 HEX NUT
47	F-1507	3	1/2" CUPPED WASHER
48	F-1510	3	3/4" FLAT WASHER
49	F-1521	6	1/2" WASHER
50	F-1526	4	1/2-13 x 1-1/2- CAPSCREW
51	F-1538	16	1/4-20 x 3/4" CAPSCREW
52	F-1546	7	5/16-18 x 3/4" CAPSCREW
53	F-1558	6	3/8-16 x 7/8" CAPSCREW
54	F-1572	12	3/8-24 x 1-1/2- CAPSCREW
55	F-1573	12	3/8-24 LOCK NUT
56	F-1672	10	3/8-16 x 1-1/4- CARRIAGE BOLT
57	F-1733	1	1/4" x 1/2" DRIVE SCREW
58	F-1741	4	3/8-16 x 6" CAPSCREW
59	F-1816	2	1/2" x 2-1/2" CLEAVIS PIN
60	F-1822	1	1/2-13 x 2-1/4- CARRIAGE BOLT
61	F-1865	1	3/8-16 x 2-1/2- CARRIAGE BOLT
62	F-1966	2	1/2-13 THIN NYLOC NUT
63	F-1976	2	3/8-16 x 1-1/2- CARRIAGE BOLT
64	F-2047	2	1/2-13 x 3" CARRIAGE BOLT
65	H-1637	1	SPRING
66	H-1948	5	3-3/4" x 4-13/16" ROLLER
67	H-2092	1	1-1/4- x 5" EXTENTION SPRING
68	H-2239	4	1/2- RUE RING
69	H-2240	2	1/2- x 4-1/2- CLEAVIS PIN
70	H-2246	3	18-3/8" HIGH UFT BLADE
71	P-10935	2	"WARNING- OEAL
72	P-10947	1	-GREASE OECK SPINOLE" OEAL
73	P-11413	1	-HOIST POINT" DECAL
74	P-11932	1	-JAZEE DECK BELT ROUTING- DECAL
75	P-11951	1	"52" DECK SIZE DECAL

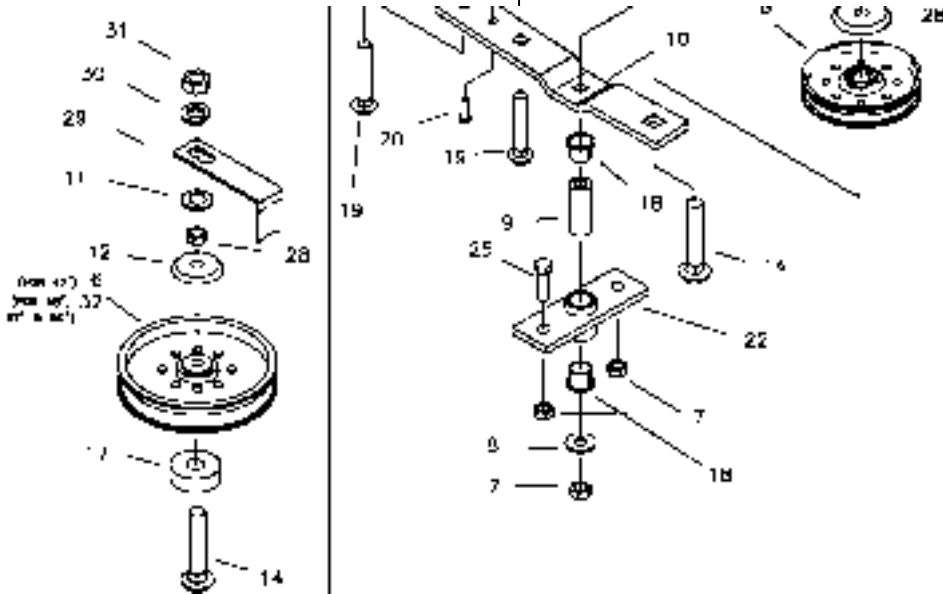
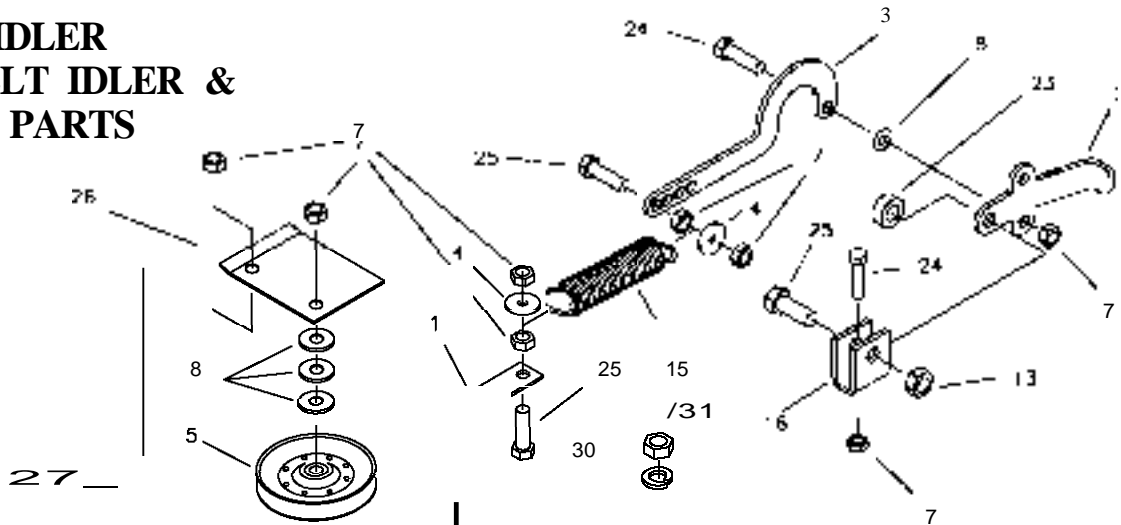
DECK SPINDLE ASSEMBLY



609F-019A
USED ON 686A-002A & 686C-002A DECKS

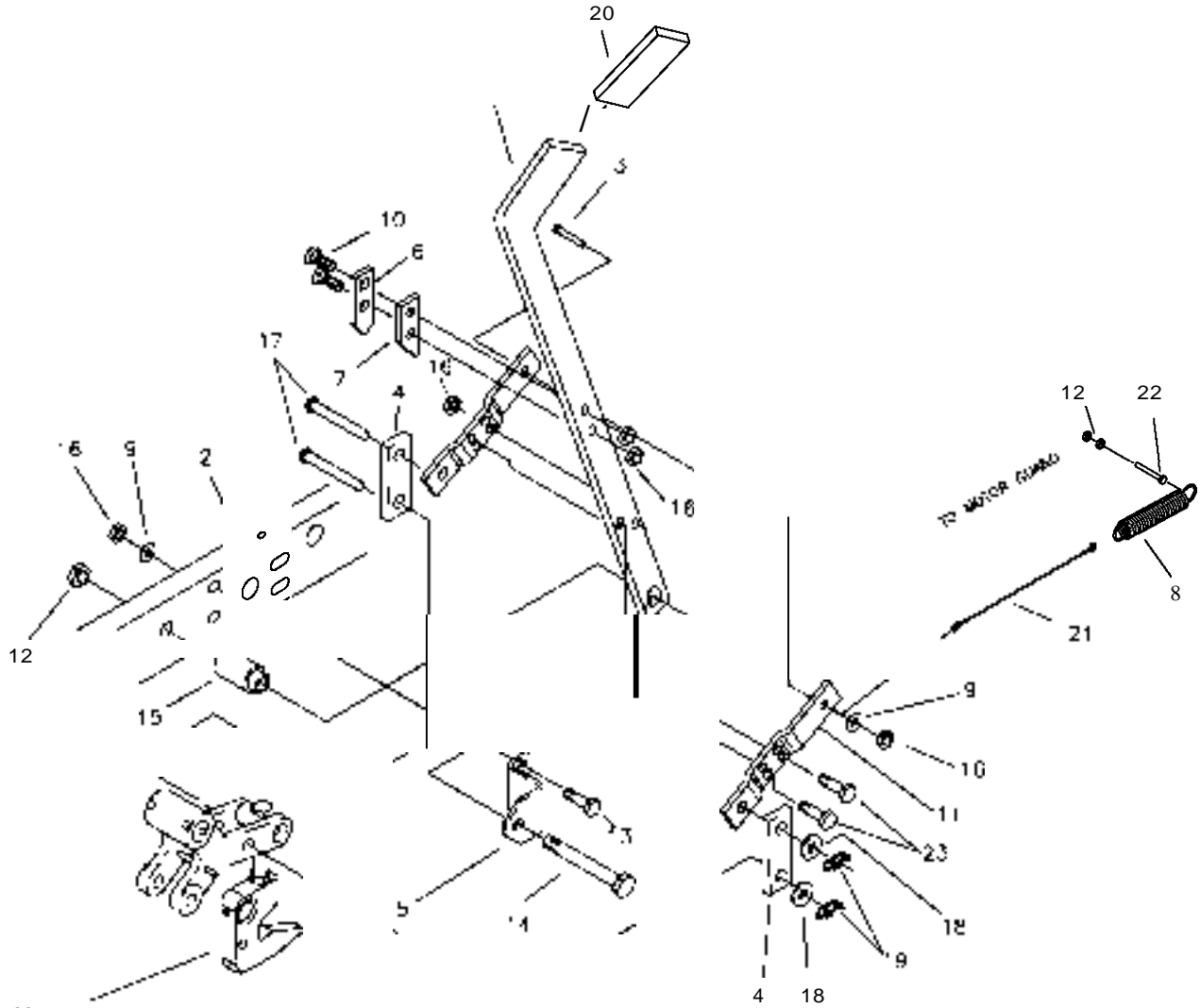
REF NO.	PART NO.	QTY.	DESCRIPTION	REF NO.	PART NO.	QTY.	DESCRIPTION
1	660-045A	1	SPINDLE ASSEMBLY	18	F-1572	4	3/8-24 X 1-1/2" HHCS GR. 5
2	H-1056	1	GREASE FINING	19	609-034P	4	SPINDLE SPACER REINFORCEMENT
3	609-162P	1	SPINDLE SHAFT	20	F-1019-03	4	3/8" LOCK WASHER
4	660-028P	1	SPINDLE HOUSING, FLAT	21	F-1573	4	3/8-24 LOCKNUT, M-F
5	D-3058	2	BEARING, #6205-2RS	22	H-1714	1	BLADE, HIGH L, 17" CUT 48"
6	H-1893	1	SNAP RING INT. 52MM		H-1715		BLADE, HIGH L, 15" CUT 42"
7	H-1893	1	SNAP RING INT. 52MM		H-2246		BLADE, HIGH L, 18 3/8" CUT 52"
8	609-152P	1	BLADE SPACER		H-1708		BLADE, HIGH L, 21" CUT 60"
9	D-1004-02	2	KEY, WOODRUF, 1/4 X 3/4				OPTIONAL BLADES
10	F-1526	1	1/2-13 X 1-1/2" HHCS GR. 5		H-1666		BLADE, LOW L, 17" CUT 48"
11	F-1464	1	1/2" LOCK WASHER		H-1665		BLADE, LOW L, 15" CUT 42"
12	F-1507	1	WASHER, 1/2" CUPPED		H-2387		BLADE, LOW L, 18 3/8" CUT, 52"
13	609-151P	1	WASHER, SEAL		H-1667		BLADE, LOW L, 21" CUT, 60"
14	609-073P	1	ARBOR SPACER		H-2013		BLADE, GATOR, 15" CUT 42"
15	H-2066	1	GREASE VENT 5 LBS.		H-2202		BLADE, GATOR, 17" CUT 48"
16	F-1461	1	3/4-16 NUT, HEX JAM		H-2251		BLADE, GATOR, 18 3/8" CUT 52"
17	F-1463	1	3/4" LOCK WASHER		H-2122		BLADE, GATOR, 21" CUT 60"
18	F-1510	1	3/4" WASHER, FLAT STD.				
19	609-266P	1	SPINDLE PULLEY, 42"				
20	668-014P	1	SPINDLE PULLEY, 48"				
21	668-013P	1	SPINDLE PULLEY, 52"				
22	668-012P	1	SPINDLE PULLEY, 60"				

**DOUBLE IDLER
DRIVE BELT IDLER &
RELATED PARTS**



REF NO.	PART NO.	QTY.	DESCRIPTION	REF NO.	PART NO.	QTY.	DESCRIPTION
1	660-081 P	1	EXTENSION FOR SPRING	22	660-039P	1	MOUNT, DOUBLE IDLER
2	660-030P	1	HANDLE, BELT TIGHTENER	23	660-038P	1	3/8" THICK SPACER
3	660-031 P	1	ARM, BELT TIGHTENER	24	F-1394	5	3/8-16 X 1" GR. 5
4	609-034P	2	SPINDLE SPACER REINFORCEMENT	25	F-1526	2	1/2-13 X 1-1/2" GR. 5
5	D-3758	1	Y' IDLER PULLEY	26	668-029P	1	BELT GUARD
6	D-3338	2	IDLER PULLEY	27	668-021 P	1	SPACER, BELT GUARD
7	F-1005-03	11	3/8 LOCK NUT	28	F-1966	2	1/2" THIN NYLOC NUT
8	F-1009-03	5	3/8 FLAT WASHER	29	660-060P	2	8BELT KEEPER
9	659-085P	1	MOUNTING PIN	30	F-1464	2	1/2" LOCK WASHER
10	660-036P	1	IDLER ARM	31	F-1489	2	1/2" THIN NUT
11	F-1521	4	1/2" FLAT WASHER	32	D-3774	1	IDLER PULLEY, 5" DIA
12	620-201P	3	BEARING CAP				
13	F-1005-05	4	1/2" LOCK NUT				
14	F-1927	1	1/2-13 X 2-3/4" CARRIAGE BOLT				
15	H-2092	1	SPRING				
16	661-015P	1	SHACKLE				
17	660-037P	1	1/2" THICK SPACER				
18	D-3730	2	BUSHING, TEFLON COATED				
19	F-1976	2	3/8-16 X 2" CARRIAGE BOLT				
20	F-1733	1	1/4" DRIVE STUD				
21	F-1865	1	3/8-16 X 2-1/2" CARRIAGE BOLT				

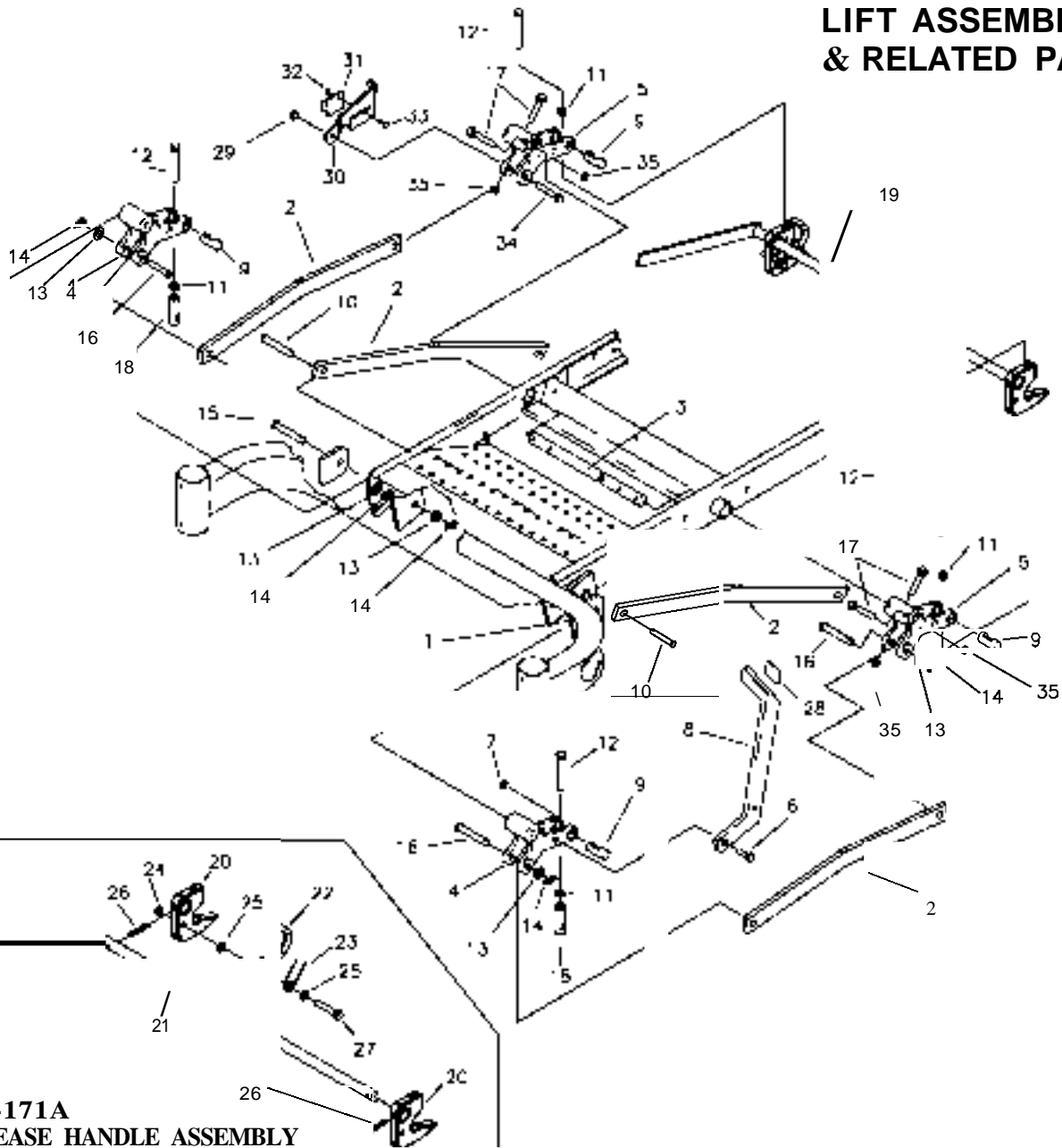
LIFT HANDLE ASSEMBLY & RELATED PARTS



SEE ASSEMBLY NUMBER
PAGE 1-5

REF NO.	PART NO.	QTY.	DESCRIPTION	REF NO.	PART NO.	QTY.	DESCRIPTION
1	659-060P	1	LIFT HANDLE	15	642-095P	1	HANDLE PIVOT PIN
2	659-022W	1	FRAME WELDMENT, LH.	16	F-1005-03	6	NUT, 3/8-16 LOCKNUT (STOVER)
3	F-1073	1	3/8-18 X 2" GR 5	17	F-1889	2	CLEVIS PIN, 1/2 X 2 5/8"
4	642-061P	2	HANDLE LINK	18	F-1521	2	1/2" FLAT WASHER
5	642-041P	1	HANDLE PIVOT BRACKET	19	H-2239	2	RUE RING, 1/2"
6	642-127P	1	TOP PEG LATCH PLATE	20	H-2324	1	VINYL GRIP, 3/8 X 1 1/2"
7	642-126P	1	TOP PEG SPACER PLATE	21	H-2460	1	CABLE
8	H-1610	1	SPRING, 1 1/2" 00. X 8"	22	F-1293	2	1/2-13 X 1 1/2" GR. 5
9	F-1009-03	3	FLAT WASHER, 3/8"	23	F-1307	2	1/2-13 X 1 1/4" GR. 5
10	F-1672	2	CARRIAGE BOLT, 3/8-16 X 1 1/4"				
11	642-060P	2	SPRING ANCHOR PLATE				
12	F-1005-05	3	NUT, 1/2-13 LOCKNUT				
13	F-1394	2	3/8-16 X 1" GR. 5				
14	F-1439	1	1/2-13 X 3" GR, 5				

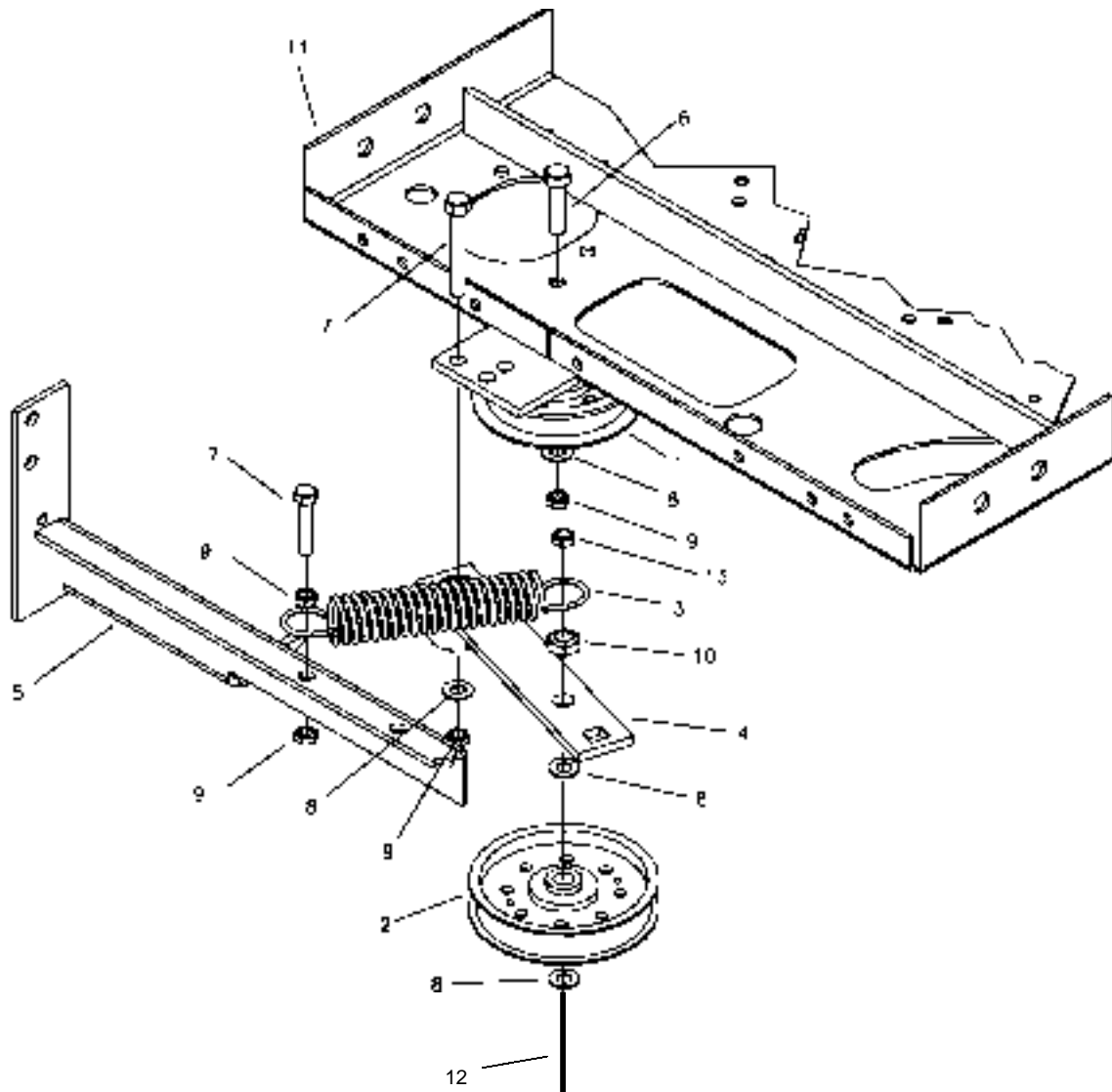
LIFT ASSEMBLY & RELATED PARTS



659-171A
RELEASE HANDLE ASSEMBLY

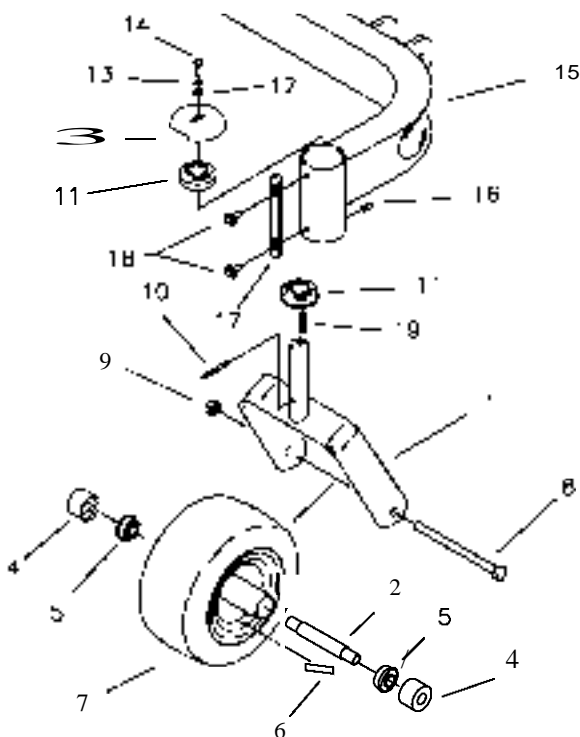
REF NO.	PART NO.	QTY.	DESCRIPTION	REF NO.	PART NO.	QTY.	DESCRIPTION
1	642-063P	2	DRAG BAR TAB	19	659-171A	1	RELEASE HANDLE ASSEMBLY
2	659-155P	4	DRAG LINK BAR	20	659-140P	2	DECK HOOK
3	620-051 P	1	LIFT BAR	21	659-148W	1	RELEASE HANDLE WELDMENT
4	642-081 P	2	LIFT SLEEVE, FRONT	22	659-145P	1	HOOK KEEPER
5	642-082P	2	LIFT SLEEVE, REAR	23	H-2547	1	SPRING, TORSION
6	F-1879	1	5/16-18 X 1 1/4" GR.5	24	F-1005-03	1	NUT, 3/8-16. STOVER
7	F-1125	1	5/16-18 STOVER NUT	25	F-1009-03	2	WASHER, FLAT, 3/8"
8	659-056P	1	DECK LIFT PEDAL	26	F-2009	2	SPIROL ROLL PIN 1/4 X 1-1/2
9	642-177P	4	HANGER PIN	27	F-1073	1	CAPSCREW, 3/8-16 X 2, GR. 5
10	F-1896	2	CLEVIS PIN, 1/2 X 1 3/4"	28	H-2401	1	TREAD PAD
11	F-1489	4	NUT, 1/2" JAM	29	F-1005-05	1	1/2" STOVER NUT
12	F-1936	4	1/2-13 X 3 1/2. 2" THREAD	30	659-146P	1	LATCH PLATE
13	F-1521	8	WASHER, 1/2 NARROW	31	659-170P	1	PLATE, CATCH
14	H-2239	8	RUE RING, 1/2"	32	F-1158	2	NUT, 1/4" STOVER
15	F-1890	2	CLEVIS PIN, 1/2 X 3 1/2"	33	F-1823	2	CARRIAGE BOLT, 1/4-20 X 3/4"
16	F-1898	3	CLEVIS PIN, 1/2 X 2 3/4"	34	F-1828	1	1/2-13 x 3-1/2" CAPSCREW
17	F-2039	4	5/16-24 x 2" HHCS	35	F-2041	4	5/16-24 JAM NUT
18	642-175P	2	ADJUSTABLE HANGER END				

TRANSMISSION IDLERS & RELATED PARTS



REF NO.	PART NO.	QTY.	DESCRIPTION
1	D-3768	1	PULLEY, 3-1/2" X 1"
2	D-3617	1	PULLEY, FLAT IDLER, 1/2" BORE, 4"
3	H-2092	1	SPRING, 1 1/4 X 5"
4	661-090A	1	IDLER ARM ASSEMBLY
5	659-160W	1	BRACE WELDMENT
6	F-1073	1	3/8-16 x 2" CAPSCREW
7	F-1015-30	2	3/8-16 X 2-1/2" GR. 5
8	F-1009-03	4	3/8" FLAT WASHER
9	F-1005-03	4	3/8-16 STOVER LOCK NUT
10	F-1966	1	1/2" THIN NYLOC NUT
11	659-174W	1	MOTOR MOUNT WELDMENT
12	F-1664	1	1/2-13 x 2-1/4" CAPSCREW
13	F-1005-05	1	1/2-13 STOVER NUT

CASTER WHEEL ASSEMBLY

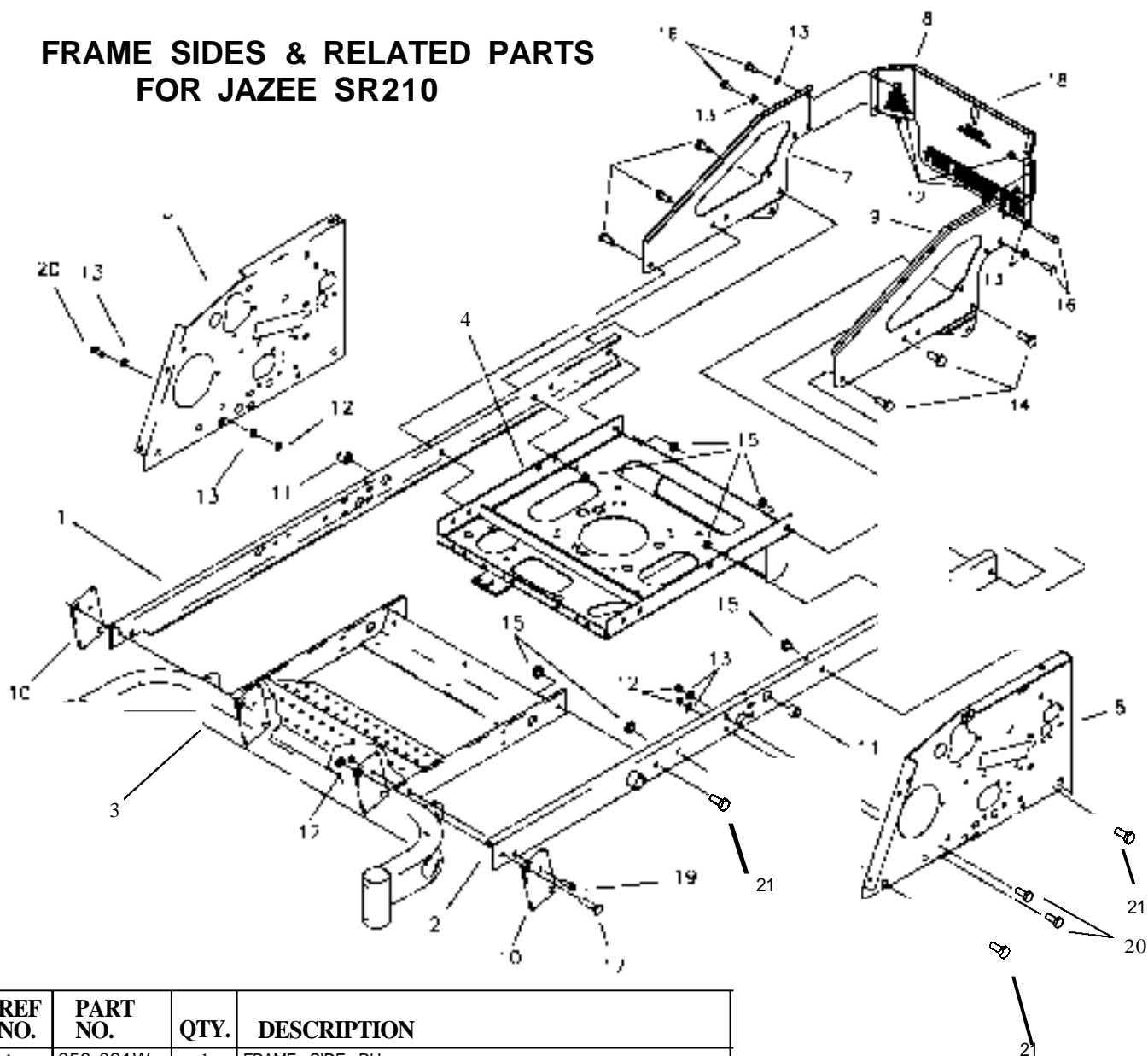


NOTE:

REF. NO.3 IS SHOWN IN REFERCE POSITION FOR CLARITY. WHEN INSTALLING, THE NOTCH SHOULD POINT TOWARDS THE BACK OF MOWER

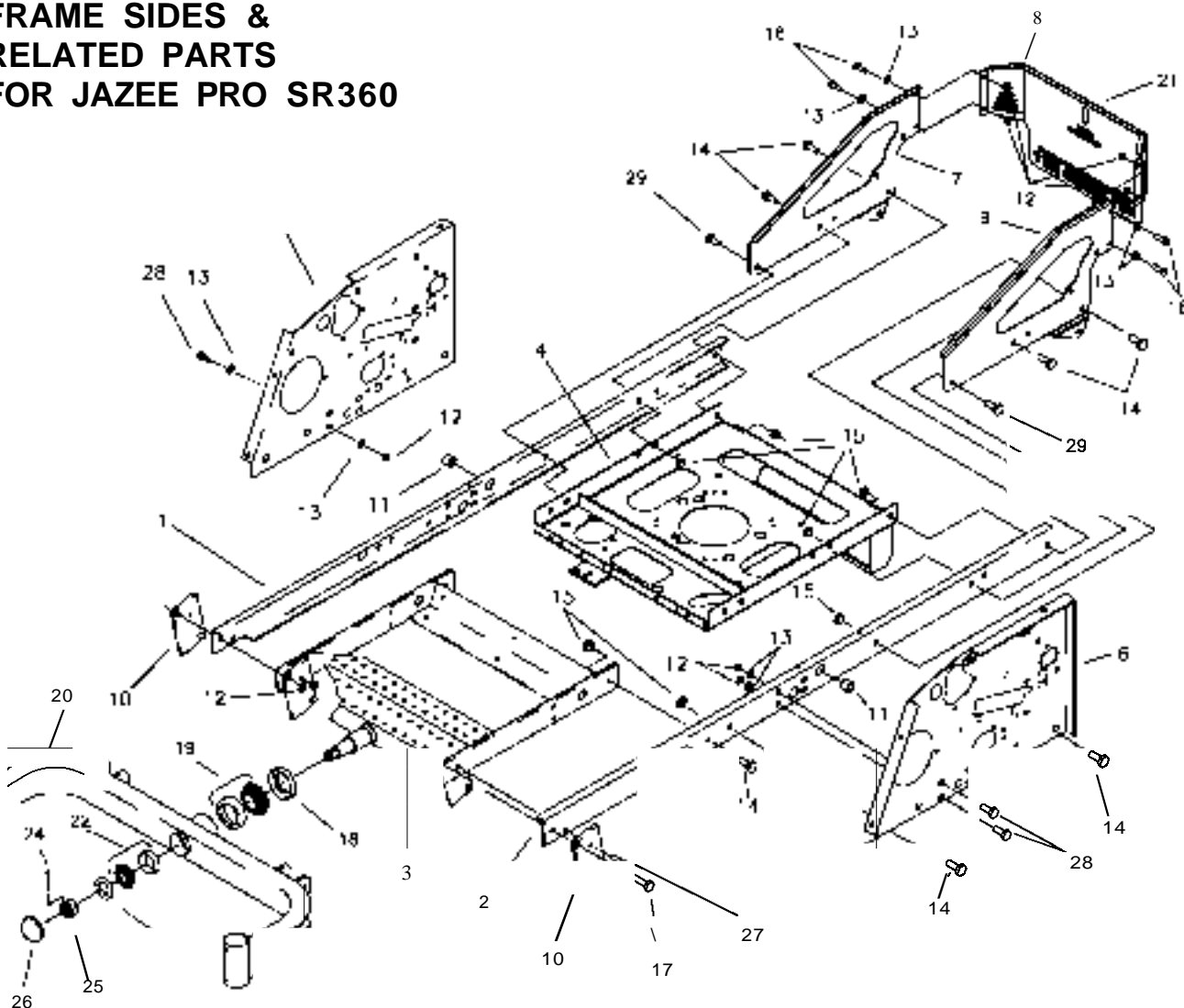
REF NO.	PART NO.	QTY.	DESCRIPTION
1	659-184W	2	CASTER WELDMENT FOR JAZEE
	617-375W	2	CASTER WELDMENT FOR JAZEE PRO
2	622-121P	2	BEARING SPACER
	611-136P	2	BEARING SPACER, JAZEE PRO
3	636-176P	2	BEARING CAP, RED
4	659-004P	4	BEARING SHIELD
	611-135P	4	BEARING SHIELD, JAZEE PRO
5	D-3432	4	BEARING, 5/8 ID X 1-3/8 OD
6	P-11384	2	DECAL, 12 PSI
7	D-3605	2	10" TIRE, W/RIM
	D-3574		TIRE, 13" W/ WHEEL, JAZEE PRO
8	F-1129	2	1/2-13 X 8" GR. 5 BOLT
9	F-1005-05	2	1/2-13 LOCK NUT
10	F-1456	2	3/16" X 2" ROLL PIN
11	D-2008-02	4	BEARING, SPD SF-16-32
12	F-1009-01	2	1/4" FLAT WASHER
13	F-1019-01	2	1/4" LOCK WASHER
14	F-1810	2	1/4-20 X 3/4 W/NYLON PATCH
15	659-183W	1	FRONT AXLE WELDMENT FOR JAZEE
	659-186W	1	FRONT AXLE WELDMENT FOR JAZEE PRO
	642-185W	1	FRONT AXLE USED w/686C-002A DECK
16	H-1056	2	GREASE ZERK
17	659-185P	2	STOP TAB
18	F-2030	4	1/4" X 5/8" SELF TAPPING SCREW
19	F-1855	2	3/16" X 1" ROLL PIN

FRAME SIDES & RELATED PARTS FOR JAZEE SR210



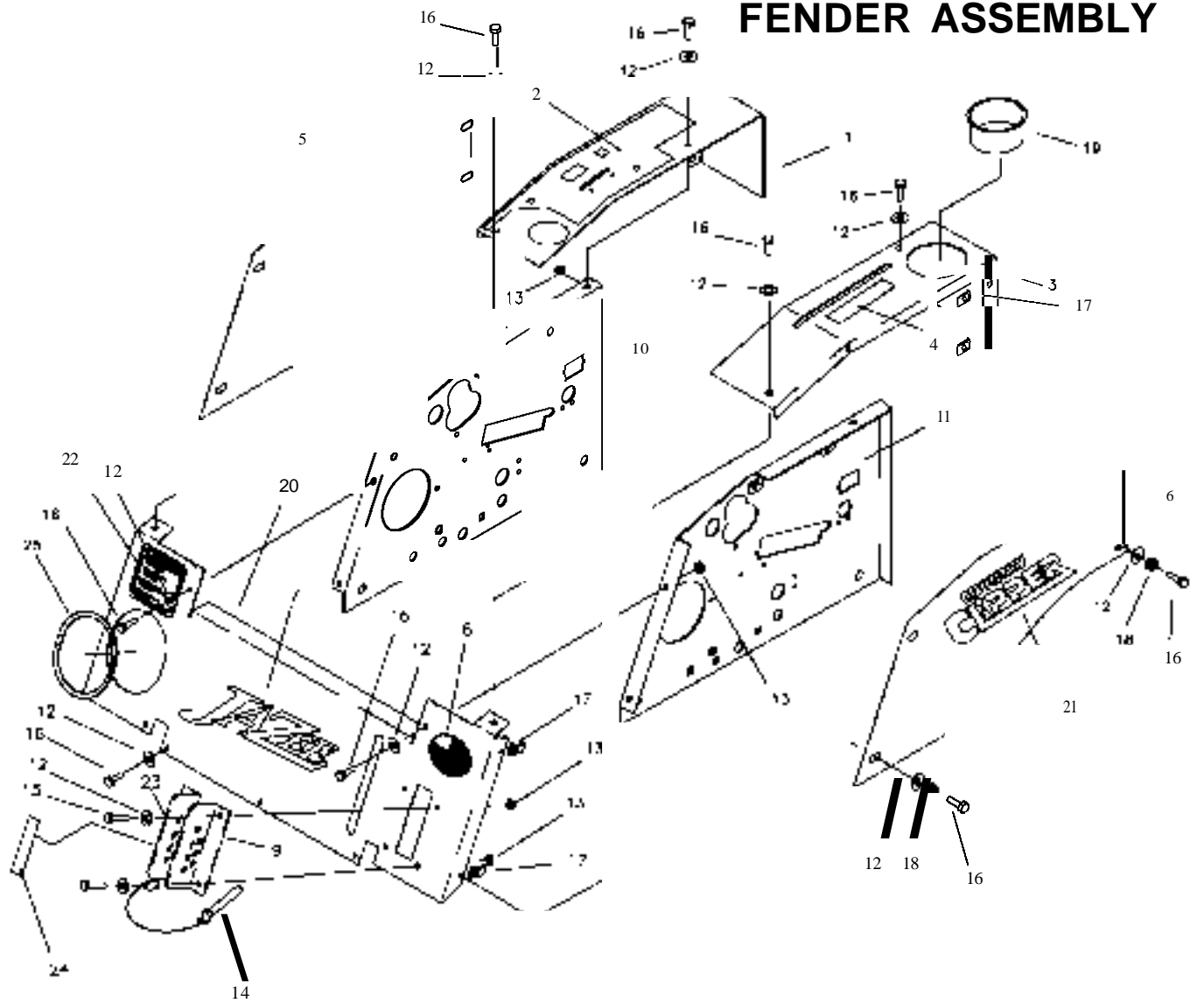
REF NO.	PART NO.	QTY.	DESCRIPTION
1	659-021W	1	FRAME SIDE RH.
2	659-022W	1	FRAME SIDE LH.
3	659-183W	1	AXLE MOUNTING WELDMENT
4	659-174W	1	MOTOR MOUNT WELDMENT
5	659-011P	1	SIDE PANEL RH.
6	659-012P	1	SIDE PANEL LH.
7	659-133P	1	ENGINE GUARD RH SIDE PANEL
8	647-120P	1	TWIN CYLINDER REAR PANEL (W/ DECAL 647-123A)
	659-135P	1	SINGLE CYLINDER REAR PANEL (W/ DECAL 659-164A)
9	659-134P	1	ENGINE GUARD LH SIDE PANEL
10	642-063P	4	DRAG BAR TAB
11	D-3730	2	BUSHING. 5/8 BORE (JOYSTICK ONLY)
12	F-1005-03	10	3/8-16 STOVER NUT
13	F-1009-03	10	3/8 FLAT WASHER
14	F-1759	4	1/2-13 X 1" GR.5
15	F-1005-05	16	1/2-13 LOCK NUT
16	F-1558	6	3/8-16 X 7/8" GR.5
17	F-1293	2	1/2-13 X 2". GR.5
18	P-12097	1	COLORED DECAL, "COUNTRY CLIPPER"
19	F-1073	2	3/8-16 x 2" CAPSCREW
20	F-1394	4	3/8-16 x 1" CAPSCREW
21	F-1386	4	1/2-13 x 1-1/4" CAPSCREW

**FRAME SIDES &
RELATED PARTS
FOR JAZEE PRO SR360**



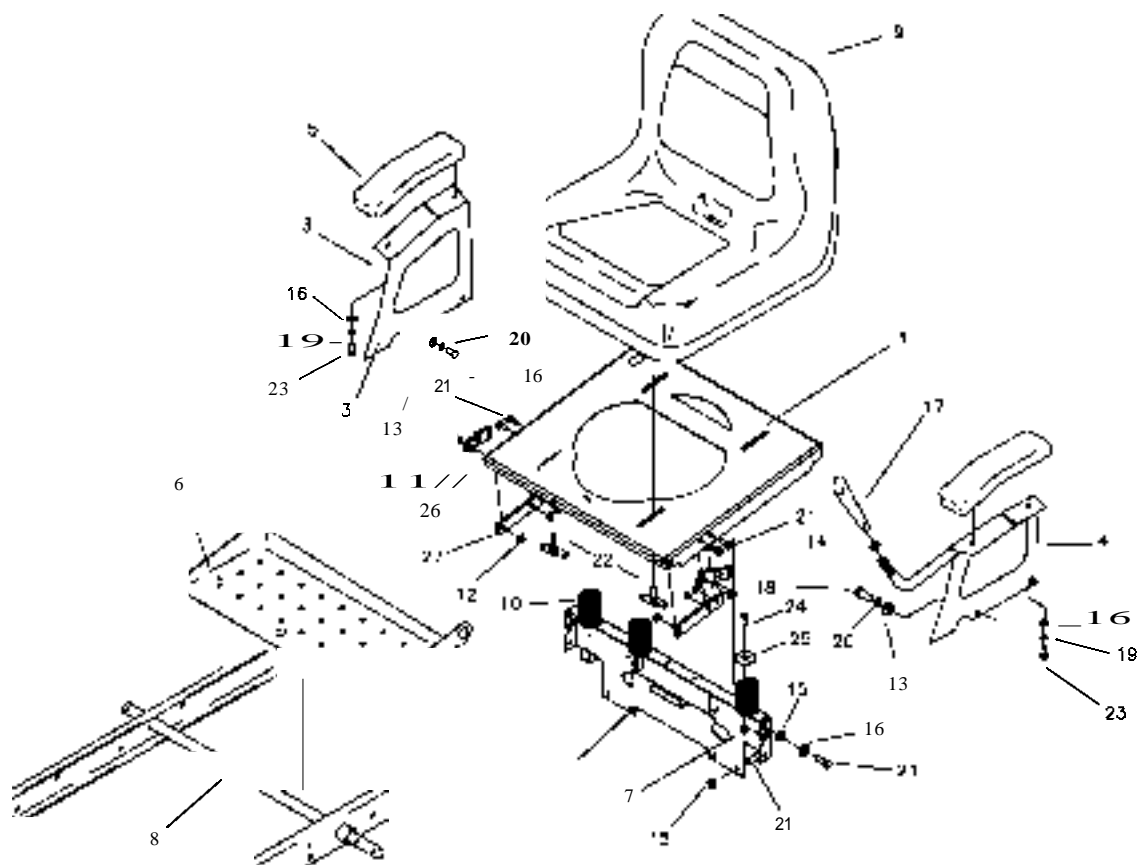
REF NO.	PART NO.	QTY.	DESCRIPTION	REF NO.	PART NO.	QTY.	DESCRIPTION
1	659-021W	1	FRAME SIDE RH.	17	F-1293	2	1/2-13 X 2", GR.5
2	659-022W	1	FRAME SIDE LH.	18	0-3647	1	FRONT PIVOT SEAL
3	663-029W	1	AXLE MOUNTING WLDT.	19	0-3646	1	FRONT PIVOT TAPARED ROLLER 8RG.
4	659-174W	1	MOTOR MOUNT WLDT.	20	659-186W	1	FRONT AXLE WLDT.
5	659-011P	1	SIDE PANEL RH.	21	642-185W	1	FRONT AXLE USED w/686C-002A DECK
6	659-012P	1	SIDE PANEL LH.	22	P-12097	1	COLORLED DECAL, "COUNTRY CLIPPER"
7	659-133P	1	ENGINE GUARD RH SIDE PANEL	23	0-3782	1	TAPARED ROLLER BRG.
8	647-120P	1	REAR PANEL GUARD (W/DECAL 647-123A)	24	606-303P	1	1" WASHER
9	659-134P	1	ENGINE GUARD LH SIDE PANEL	25	F-1728	1	3/16 X 2" COTTER PIN
10	642-063P	2	DRAG BAR TAB	26	F-1724	1	1-14 SLOTTED NUT
11	0-3730	2	BUSHING, 5/8 BORE (JOYSTICK ONLY)	27	H-1924	1	GREASE CAP
12	F-1005-03	10	3/8-16 STOVER NUT	28	F-1073	2	3/8-16 x 2" CAPSCREW
13	F-1009-03	10	3/8 FLAT WASHER	29	F-1394	4	3/8-16 x 1" CAPSCREW
14	F-1759	12	1/2-13 X 1" GR.5		F-1386	2	1/2-13 x 1-1/4" CAPSCREW
15	F-1005-05	12	1/2-13 LOCK NUT				
16	F-1558	4	3/8-16 X 7/8" GR.5				

FENDER ASSEMBLY



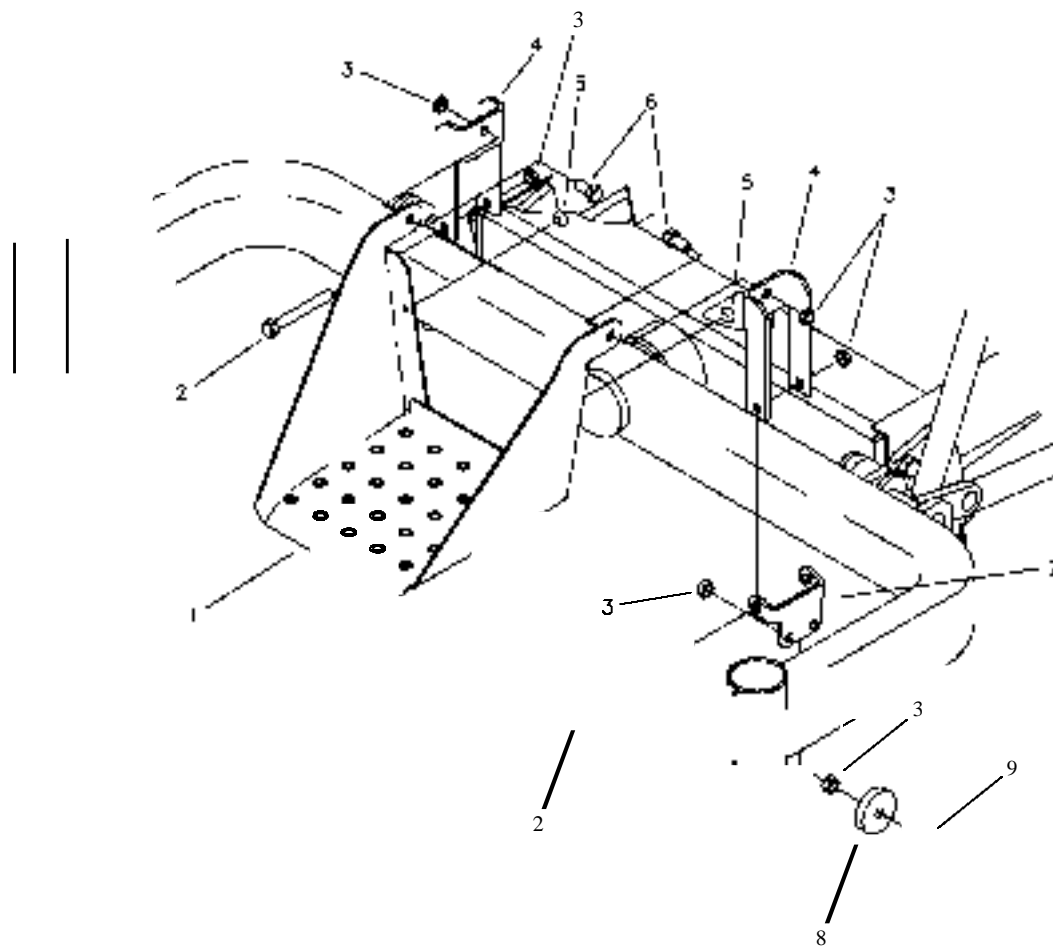
REF NO.	PART NO.	QTY.	DESCRIPTION	REF NO.	PART NO.	QTY.	DESCRIPTION
	659-166P	1	FENDER CAP RH (W/OECAL 659-067A)	16	F-1015-15	18	5/16-'8 X 1" GR.5
	659-167P	1	FENDER CAP TS RH(W/DECAL 659-098A)	17	F-1860	8	5/16 U-NUT
2	P-11626	1	DECAL. "CONTROL PANEL"	18	F-1019-02	8	5/16 LOCK WASHER
3	659-017P	1	FENDER CAP LH. (W/DECAL 659-068A)	19	644-028P	1	CUP HOLDER
	659-090P	1	FENDER CAP TS LH.(w/oECAL 659-097A)	20	659-054P	1	FRONT PANEL (W/JAZEE 659-190A)
4	P-11382	1	DECAL. PARK BRAKE		659-054P	1	FRONT PANEL (W/JAZEE PRO 659-191A)
5	659-023P	1	FENDER SKIRT RH (W/OECAL 659-188A)	21	P-12097	2	DECAL. "COUNTRY CLIPPER"
6	659-023P	1	FENDER SKIRT LH (W/DECAL 659-189A)	22	P-10939	1	DECAL. "CAUTION"
7	P-11624	1	DECAL. JAZEE	23	642-130P	1	LATCH PLATE (W/DECAL 642-137A)
	P-12063	1	DECAL, JAZEE PRO	24	P-12039	1	DECAL. "CUT HEIGHT"
8	P-12253	1	MADE IN THE USA DECAL	25	H-1626	1	"U"-CHANNEL TRIM
9	642-131 P	1	LATCH PLATE LH.				
10	659-011 P	1	SIDE PANEL RH.				
11	659-012P	1	SIDE PANEL LH.				
12	F-1009-02	22	5/16 FLAT WASHER				
13	F-1125	16	5/16-'8 LOCK NUT				
14	F-1807	1	1/2" X 2.4 CLEVIS PIN W/SASH				
15	F-1879	4	5/16-18 X 1-1/4" GR. 5				

SEAT, FOOTDECK & RELATED PARTS



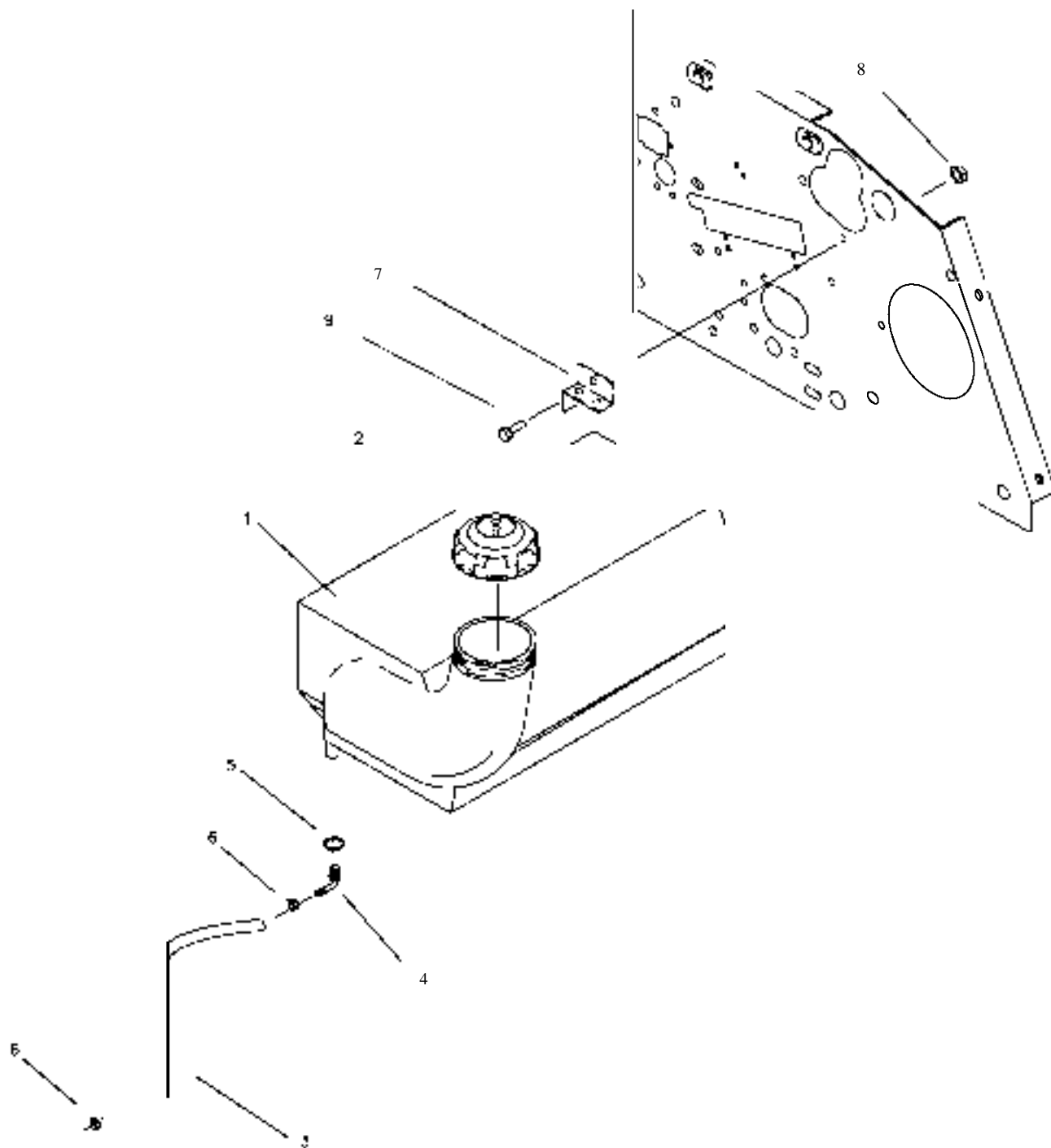
REF NO.	PART NO.	QTY.	DESCRIPTION	REF NO.	PART NO.	QTY.	DESCRIPTION
1	659-005P	1	SEAT MOUNTING BASE	16	F-1009-02	8	5/16 FLAT WASHER
2	659-136P	1	REAR SEAT BRACE	17	H-2317	1	TAPERED HANDLE
3	659-D51 P	1	ARM REST RH. (JOYSTICK)	18	F-1015-23	4	3/8-16 X 3/4" GR. 5
4	659-D55W	1	ARM REST LH. (JOYSTICK)	19	F-1019-02	4	5/16 LOCK WASHER
	636-163P	1	ARM REST LH. (TWINSTICK)	20	F-1019-03	4	3/8 LOCK WASHER
5	621-143A	2	ARM REST PAD	21	F-1546	12	5/16-1B X 3/4" GR. 5
6	659-D06P	1	FOOT PANEL	22	659-D73A	4	T-HANDLE ASSEMBLY
7	F-1158	3	1/4" STOVER NUT	23	F-1015-15	4	5/16-18 X 1" GR. 5
B	620-051 P	1	LIFT BAR	24	F-153B	3	1/4-20 X 3/4", GR.5
9	H-2449	1	SEAT	25	620-D50P	3	1" HEAVY WASHER
10	H-1920	3	SEAT SPRING	26	647-D86P	2	FLIP SEAT MATING TAB
11	F-1394	2	3/8-16 X 1 1/4" GR. 5	27	659-175P	2	SEAT HINGE TAB
12	F-1005-03	2	3/8-16 LOCK NUT				
13	F-1009-03	4	3/8 FLAT WASHER				
14	F-1486	1	3/8-16 JAM NUT				
15	F-1125	12	5/16-18 LOCK NUT				

FRONT STEP ASSEMBLY FOR JAZEE PRO SR360



REF NO.	PART NO.	QTY.	DESCRIPTION
1	647-133P	1	FRONT STEP
2	F-1616	2	3/8-16 X 3-1/4" BOLT
3	F-1005-03	8	3/8-16 LOCK NUT
4	647-134P	2	FRONT STEP YOKE
5	H-2461	2	RUBBER BUMPER BUTTON
6	F-1015-23	2	3/8-16 X 3/4" BOLT
7	629-636P	2	ROLLER MOUNT
8	642-105P	2	ROLLER
9	F-1307	2	3/8-16 X 1-1/4" BOLT

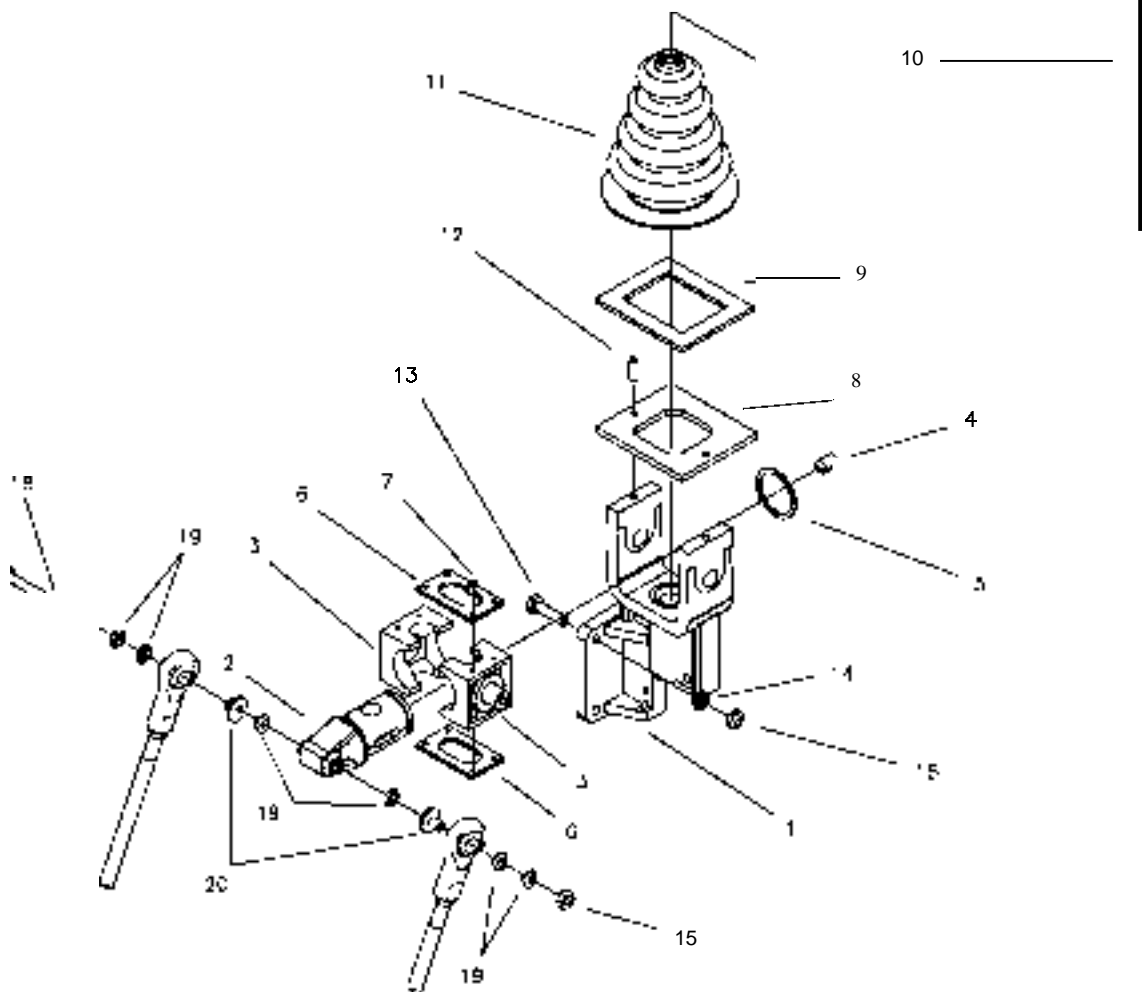
FUEL TANK ASSEMBLY



REF NO.	PART NO.	QTY.	DESCRIPTION
1	H-2394	1	4 1/2 GALLON TANK
2	H-2232	1	GAS CAP
3	H-1648	1	FUEL LINE
4	H-1646	1	HOSE BARB, 90 DEG.
5	H-1952	1	HOSE CLAMP
6	H-1687	2	HOSE CLAMP, 1/2"
7	659-066P	1	TANK MOUNTING CLAMP
8	F-1158	1	1/4-20 STOVER NUT
9	F-1015-03	1	1/4-20 X 3/4, GR.5

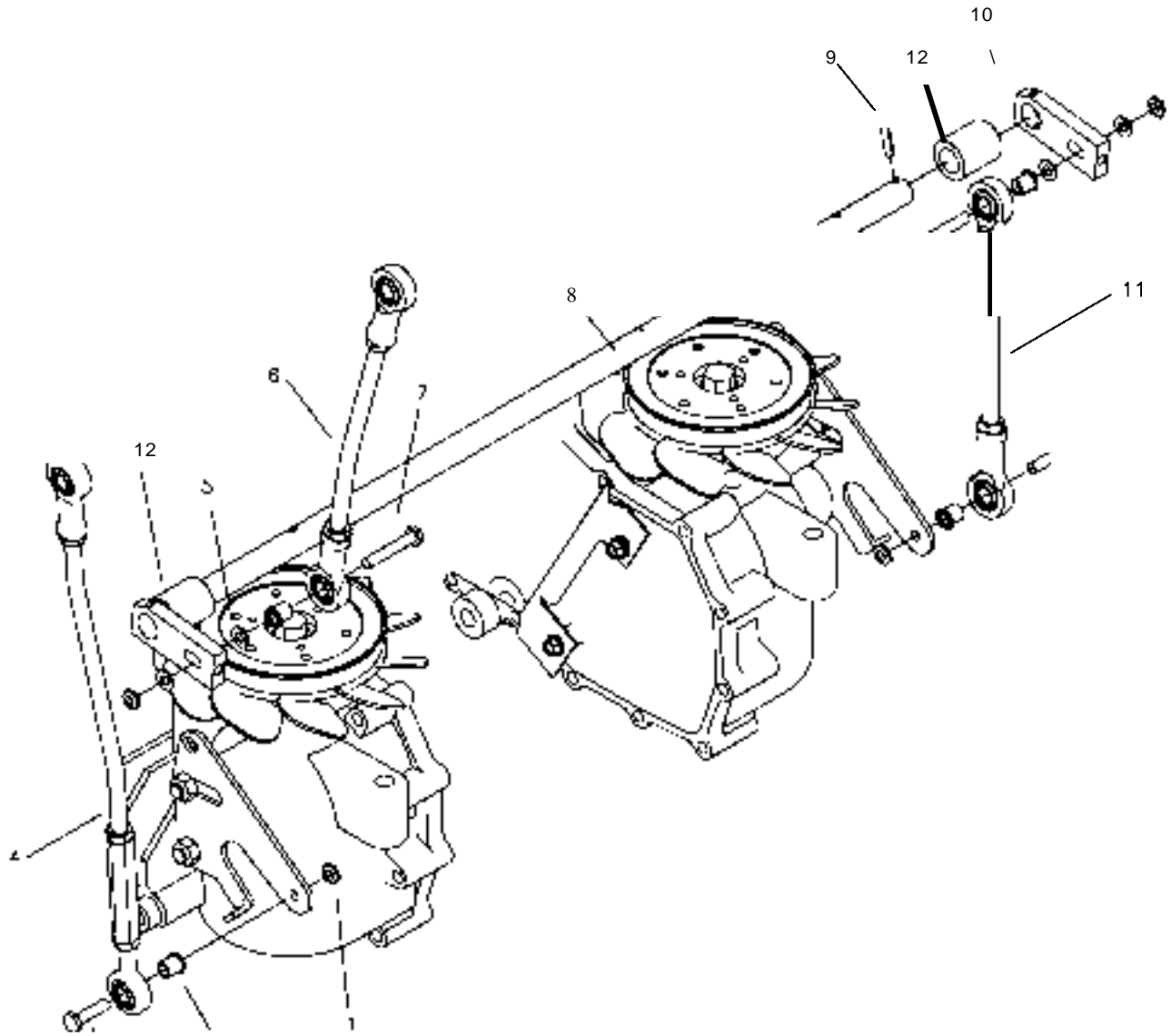
JOYSTICK STEERING CONTROL AND RELATED PARTS

NOTE: ITEMS #2 AND #3 MUST BE REPLACED AT THE SAME TIME FOR MAXIMUM PERFORMANCE.



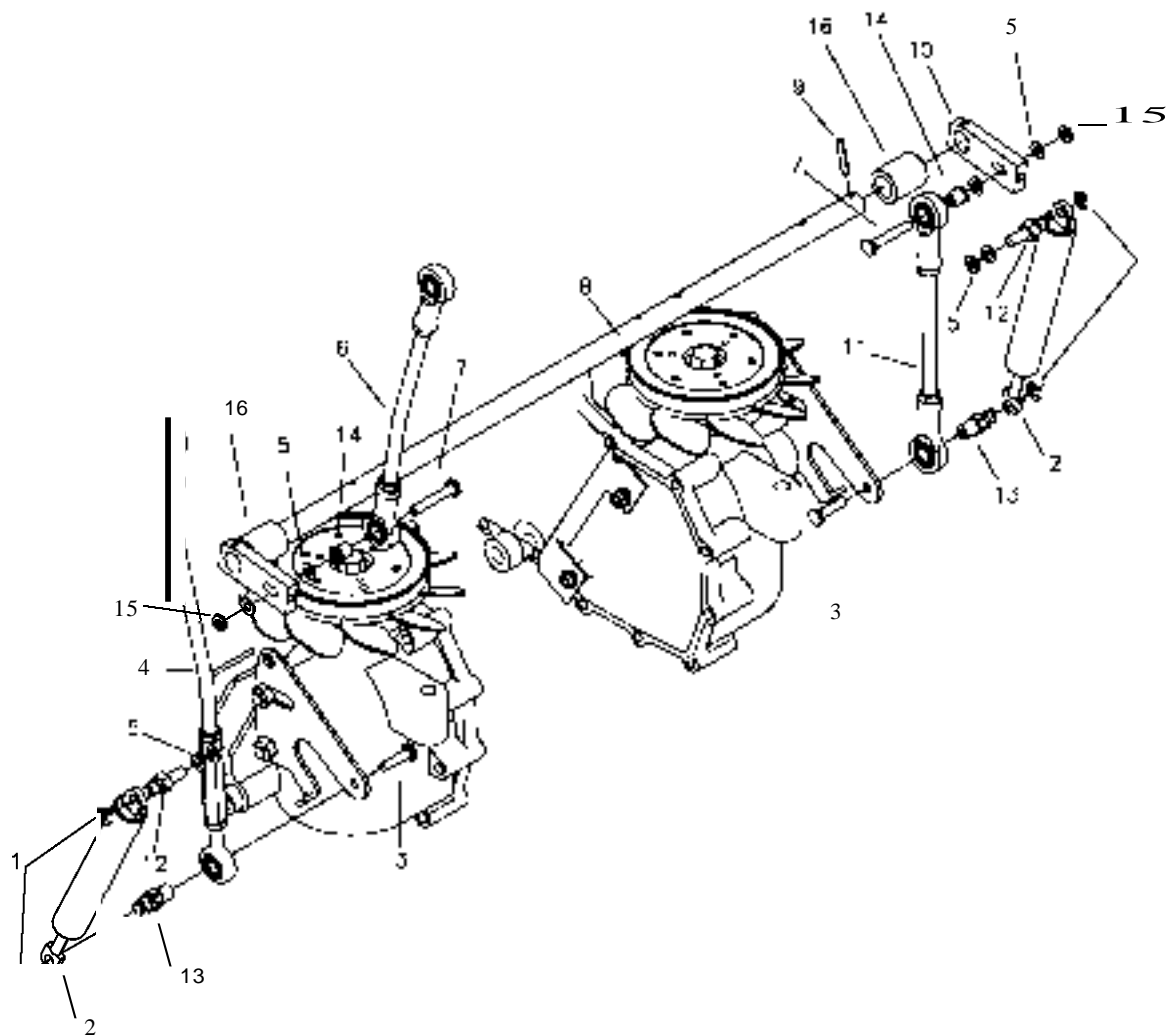
REF NO.	PART NO.	QTY.	DESCRIPTION	REF NO.	PART NO.	QTY.	DESCRIPTION
	647-122A	1	JOYSTICK ASSEMBLY	11	H-1991	1	BOOT, BELLOWS
1	659-144P	1	JOYSTICK YOKE	12	F-1999	2	ROLL PIN, 3/16 X 5/8
2	H-1992	1	PIVOT SHAFT	13	F-1015-05	3	1/4-20 X 1" HHCS GR. 5
3	H-1993	2	PIVOT BLOCK	14	F-1019-01	3	1/4" LOCK WASHER
4	F-1120	1	BALL PLUNGER	15	F-1158	4	1/4" LOCK NUT
5	H-1997	1	SNAP RING, SPIRLOCK	16	F-1011-03	1	3/8-16 NUT, JAM
6	619-306P	2	PIVOT BLOCK PLATE	17	H-2317	1	GRIP, HANDLE
7	F-1624	8	#6-32 X 3/8" SCREW SLOT	18	F-102D-01	1	1/2-20 X 3-1/2" GR. 5
8	659-129P	1	JOYSTICK TOP PLATE	19	H-1989	6	BUSHING, BALL JOINT
9	H-1947	1	GASKET, FOAM	20	H-2465	2	1/4" SPACER
10	621-140A	1	JOYSTICK SHAFT ASSEMBLY				

JOYSTICK STEERING CONTROL AND RELATED PARTS FOR JAZEE SR210



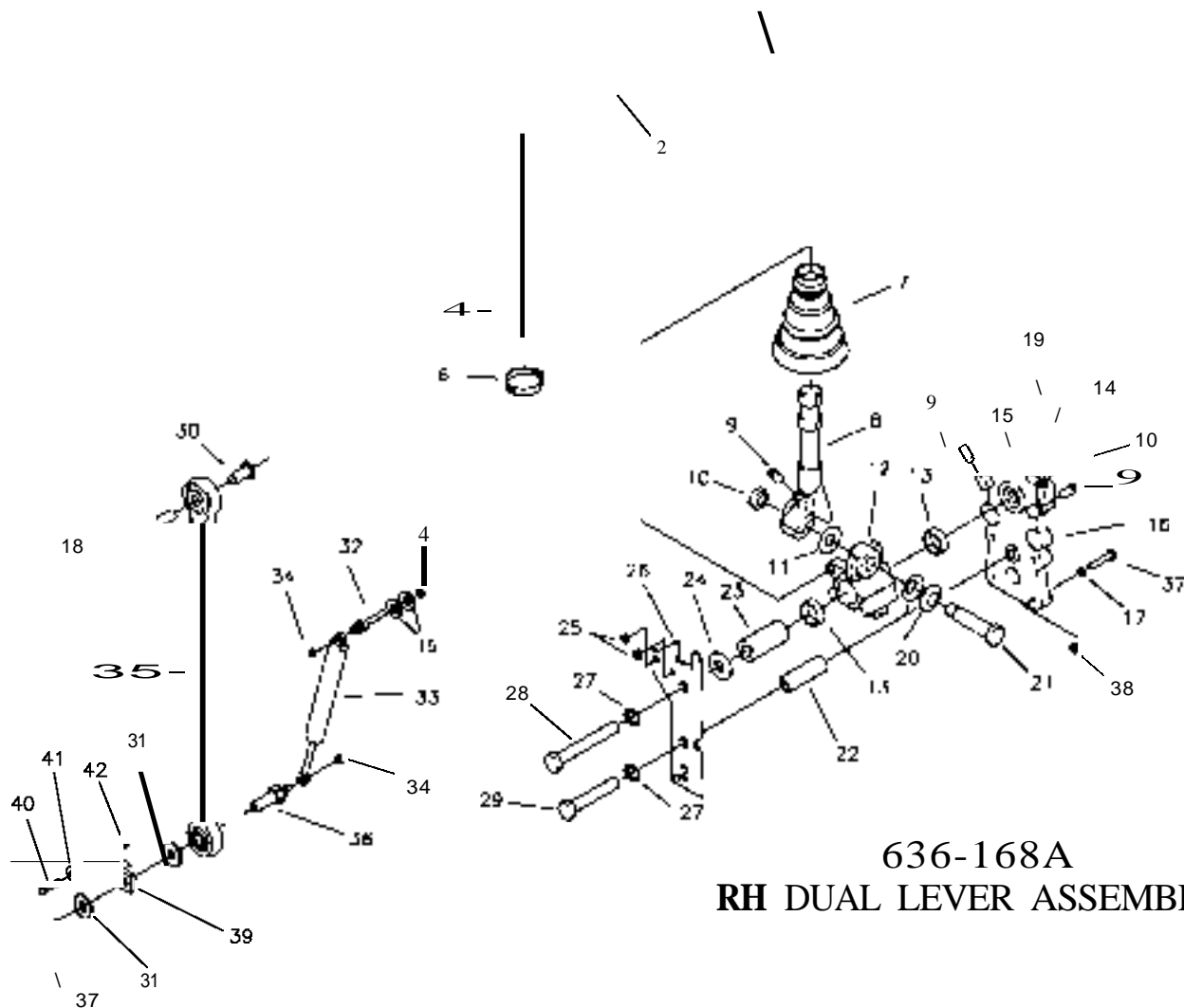
REF NO.	PART NO.	QTY.	DESCRIPTION
1	F-1158	4	1/4-20 LOCK NUT
2	H-2465	4	1/2 X 1/4" SHOULDERWASHER
3	F-1015-05	2	1/4-20 X 1"
4	663-050P	1	STEERING LINKAGE
5	F-1009-02	4	1/4" FLAT WASHER
6	663-049P	1	UPPER STEERING LINKAGE
7	F-1716	2	1/4-20 X 1 1/2"
8	659-026P	2	HYORO SHAFT ROD
9	F-1503	2	ROLL PIN 3/16 X 1"
10	625-030P	2	SWIVEL ARM
11	659-127P	1	LOWER STEERING LINKAGE
12	651-024P	2	SPACER

JOYSTICK STEERING CONTROL AND RELATED PARTS FOR JAZEE PRO SR360



REF NO.	PART NO.	QTY.	DESCRIPTION
1	F-1610	4	RETAINING RING, INTERNAL
2	H-2467	2	DUAL ACTION DAMPER
3	F-1015-03	2	1/4-20 X 1"
4	663-050P	1	STEERING LINKAGE
5	F-1009-02	8	1/4" FLAT WASHER
6	663-049P	1	UPPER STEERING LINKAGE
7	F-1716	2	1/4-20 X 1 1/2"
8	659-026P	2	HYORO SHAFT ROD
9	F-1503	2	ROLL PIN 3/16 X 1"
10	625-030P	2	SWIVEL ARM
11	659-127P	1	LOWER STEERING LINKAGE
12	638-028P	2	DAMPER BOLT, 5/16-18 X 3/4"
13	663-051 P	2	DAMPER STUD, FEMALE
14	H-2465	2	1/2 X 1/4" SHOULDER WASHER
15	F-1158	2	1/4" STOVER LOCK NUT
16	651-024P	2	SPACER

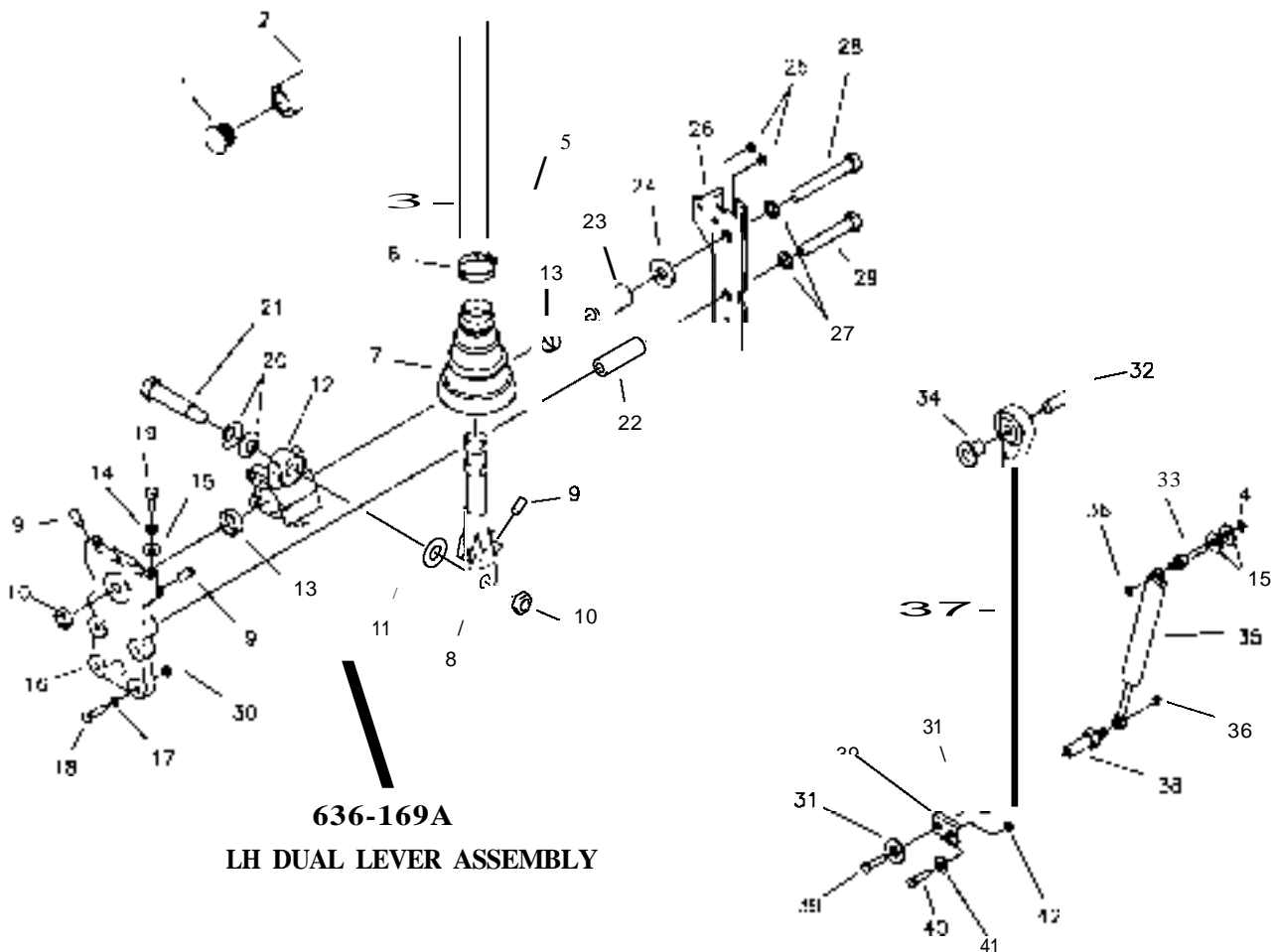
RIGHT HAND STEERING CONTROL AND RELATED PARTS



636-168A
RH DUAL LEVER ASSEMBLY

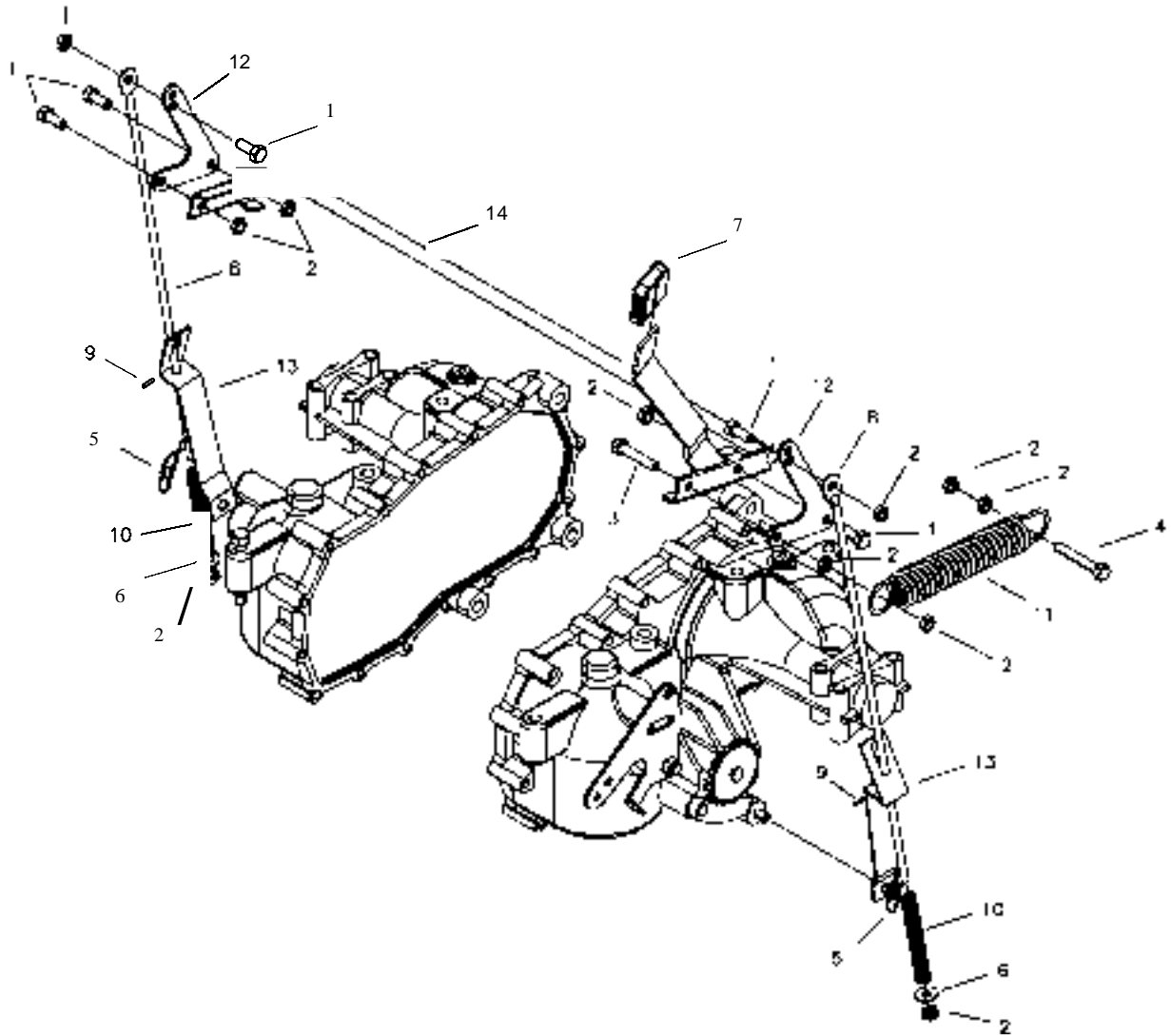
REF NO.	PART NO.	QTY.	DESCRIPTION	REF NO.	PART NO.	QTY.	DESCRIPTION
1	H-2080	1	END PLUG. 15 16 BLACK	23	625-D64P	1	BUSHING, PIVOT BLOCK
2	H-2079	1	FOAM GRIP, 17"	24	625-072P	1	WASHER, FLAT
3	636-170P	1	CONTROL LEVER	25	F-1995	2	GROMMET. NYLON
4	F-1125	3	5/16 LOCK NUT	26	636-167P	1	TOP PLATE. DUALEVER
5	F-1015-17	2	5/16-18 X 1-1/2" HHCS GR. 5	27	F-1464	2	1/2" LOCK WASHER
6	H-2089	1	HOSE CLAMP	28	F-1828	1	1/2-13 X 3-1/2" HHCS GR. 5
7	H-2081	1	BOOT, TAPERED 1" CUFF	29	F-1439	1	1/2-13 X 3" HHCS GR. 5
8	625-063P	1	LEVER, DUALEVER	30	H-2465	1	1/2 X 1/4" SHOULDER WASHER
9	F-1842	3	SETSCREW, 5/16-18 X 3/4"	31	F-1009-01	2	1/4" FLAT WASHER
10	F-1489	2	1/2-13 JAM NUT	32	638-028P	1	DAMPER BOLT, 5/16-18 X 3/4"
11	H-2116	1	WASHER, FIBER	33	H-2168	1	STEERING DAMPER
12	638-033P	1	PIVOT BLOCK, DUALEVER	34	F-161D	2	E-RING FOR 1/4" SHAFT
13	D-3622	2	BEARING	35	663-D50P	1	LINK ROD ASSEMBLY
14	F-1D19-02	2	5/16" LOCK WASHER	36	663-051P	1	DAMPER BOLT, 1/4-20 FEMALE
15	F-1D09-02	4	WASHER, FLAT STD. 5/16"	37	F-1539	3	1/4-20 X 1-1/4" HHCS GR. 5
16	638-034P	1	BASE DUALEVER	38	F-1158	3	1/4-20 LOCK NUT
17	F-1019-01	11	1/4" LOCK WASHER	39	659-180P	1	TRACKING ADJUSTMENT ADAPTER
18	F-1974	1	1/4-20 X 1-1/4" SOCK HD	4D	F-1015-23	1	3/8-16 X 3/4" CAPSCREW
19	F-1546	1	5/16-18 X 3/4" HHCS GR. 5	41	F-1009-03	1	3/8" FLAT WASHER
20	H-2115	2	WASHER. SPRING	42	F-1005-03	1	3/8-16 LOCK NUT
21	625-07DP	1	SHOULDER BOLT, 5/8" OD				
22	625-067P	1	BUSHING STAND OFF				

LEFT HAND STEERING CONTROL AND RELATED PARTS



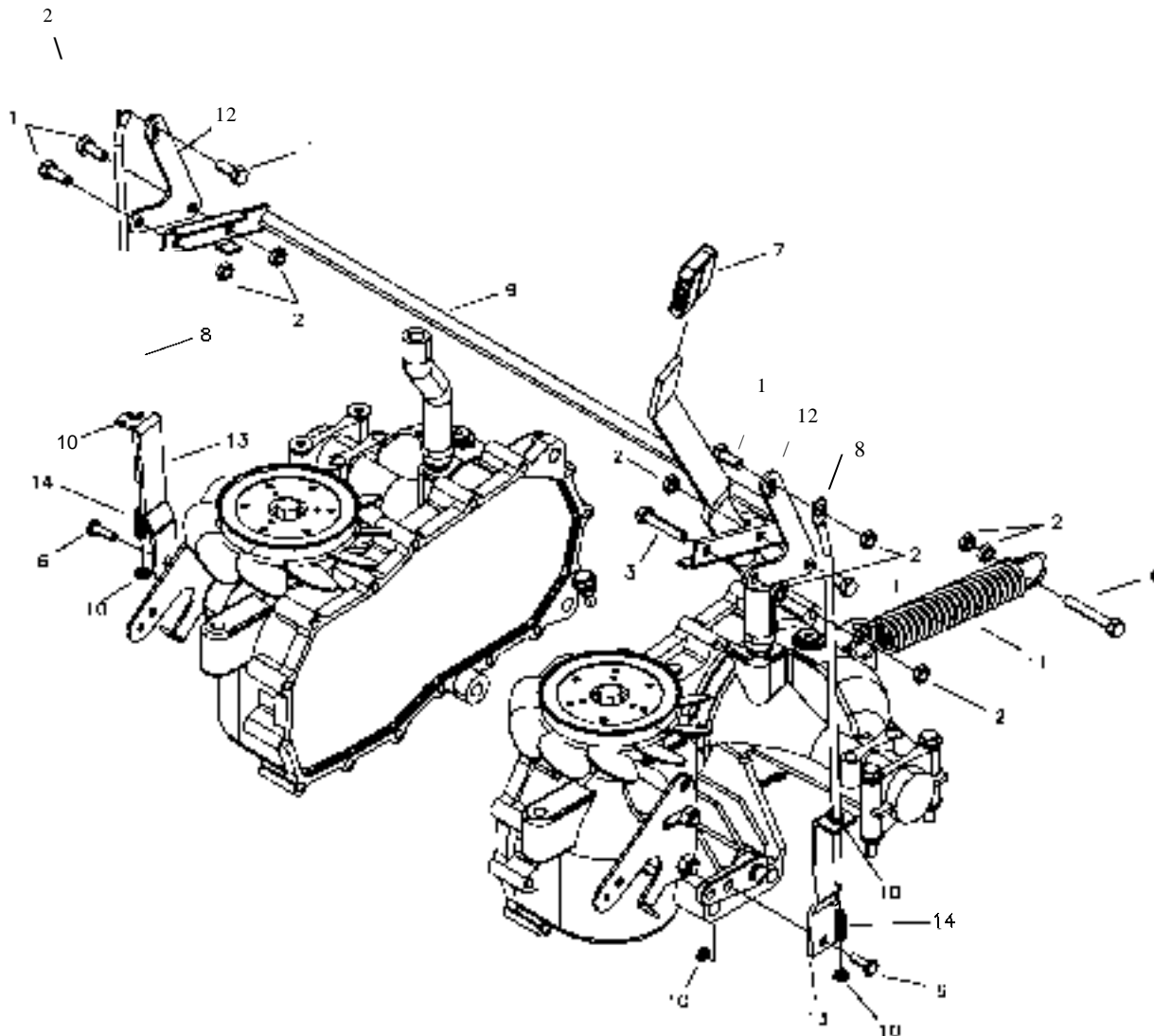
REF NO.	PART NO.	QTY.	DESCRIPTION	REF NO.	PART NO.	QTY.	DESCRIPTION
1	H-2080	1	ENO PLUG, 15/16" BLACK	22	625-067P	1	BU5HING, 5TAND OFF
2	H-2079	1	FOAM GRIP, 17"	23	625-064P	1	BUSHING, PIVOT BLOCK
3	363-170P	1	CONTROL LEVER	24	625-072P	1	WASHER, FLAT
4	F-1125	3	5/16 LOCK NUT	25	F-1995	2	GROMMET. NYLON
5	F-1015-17	2	5/16-18 X 1-1/2" HHCS GR, 5	26	636-167P	1	TOP PLATE, DUALEVER
6	H-2089	1	HOSE CLAMP	27	F-1464	2	1/2" LOCK WASHER
7	H-2081	1	BOOT, TAPERED 1" CUFF	28	F-1828	1	1/2-13 X 3-1/2" HHCS GR, 5
8	625-063P	1	LEVER, DUALEVER	29	F-1439	1	1/2-13 X 3" HHCS GR, 5
9	F-1842	3	SETScrew, 5/16-18 X 3/4"	30	F-1158	3	1/4-20 LOCK NUT
10	F-1489	2	1/2-13 JAM NUT	31	F-1009-01	2	1/4" FLAT WASHER
11	H-2116	1	WASHER, FIBER	32	F-1974	1	1/4-20 X 1-1/4" SOCKHEAD BOLT
12	638-033P	1	PIVOT BLOCK, DUALEVER	33	638-028P	2	DAMPER BOLT, 5/16-18 X 3/4"
13	D-3622	2	BEARING	34	H-2465	1	SHOULDER WASHER
14	F-1019-02	3	5/16" LOCK WASHER	35	H-2168	1	STEERING DAMPER
15	F-1009-02	5	WASHER, FLAT STD. 5/16"	36	F-1610	2	E-RING FOR 1/4" SHAFT
16	638-034P	1	BASE DUALEVER	37	663-050P	1	STEERING LINKAGE
17	F-1019-01	11	1/4" LOCK WASHER	38	663-051 P	1	DAMPER BOLT, 1/4-20 FEMALE
18	F-1539	3	1/4-20 X 1-1/4" HHCS GR. 5	39	659-180P	1	TRACKING ADJUSTMENT ADAPTER
19	F-1546	1	5/16-18 X 3/4" HHCS GR. 5	40	F-1015-23	1	3/8-16 X 3/4" CAPSCREW
20	H-2115	2	WASHER, SPRING	41	F-1009-03	1	3/8 FLAT WASHER
21	625-070P	1	SHOULDER BOLT, 5 8" OD	42	F-1005-03	1	3/8-16 LOCK NUT

PARKING BRAKE ASSEMBLY & RELATED PARTS FOR JAZEE SR210



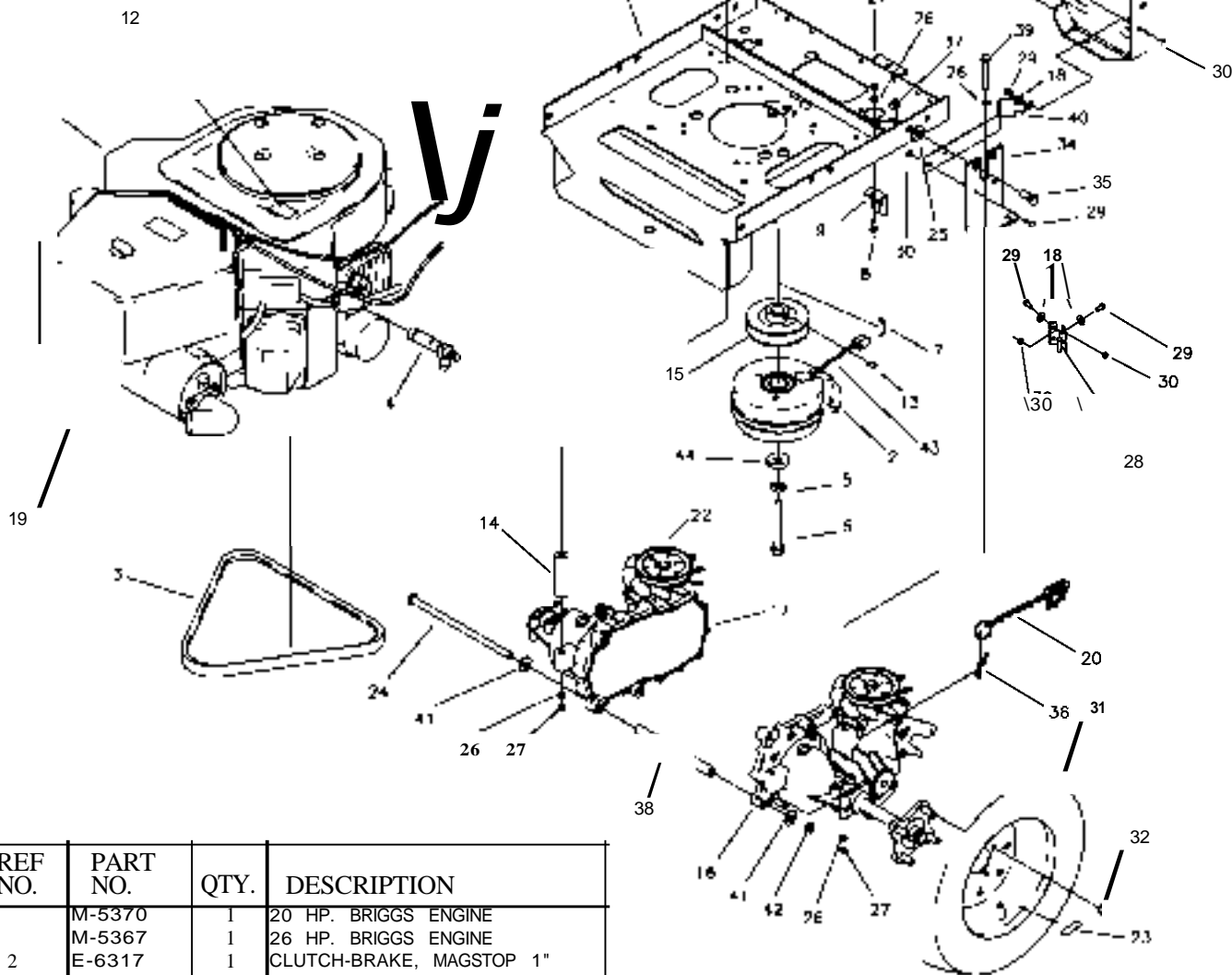
REF NO.	PART NO.	QTY.	DESCRIPTION
1	F-1546	5	5/16-18 X 3/4" GR. 5
2	F-1125	11	5/16" STOVER LOCK NUT
3	F-1015-17	1	5/16-18 X 1-1/2" GR. 5
4	F-1015-19	1	5/16-18 X 2" GR. 5
5	F-1492	2	RUE RING, 5/16-3/8 PIN
6	F-1009-D2	2	5/16" FLAT WASHER
7	H-1926	1	GRIP, HANDLE, 1/4" X 1"
8	H-2206	2	BRAKE LINK ROD
9	H-1800	2	ROLL PIN 3/32 00 X 3/8 LONG
10	H-2426	2	SPRING, 3.69 X .372 10 X .064
11	H-1635	1	SPRING, EXT. 3/4 X 4" OAL
12	659-143P	1	SHIFT PLATE
13	659-013P	2	LOWER BRAKE LINK
14	659-010W	1	BRAKE ROD WELDMENT

PARKING BRAKE ASSEMBLY & RELATED PARTS FOR JAZEE PRO SR360



REF NO.	PART NO.	QTY.	DESCRIPTION
1	F-1546	5	5/16-18 X 3/4" GR. 5
2	F-1125	9	5/16" STOVER LOCK NUT
3	F-1015-17	1	5/16-18 X 1-1/2" GR. 5
4	F-1015-19	1	5/16-18 X 2" GR. 5
5	F-1492	2	RUE RING, 5/16-3/8 PIN
6	F-1538	2	1/4-20 X 3/4" GR. 5
7	H-1926	1	GRIP, HANDLE, 1/4" X 1"
8	H-2452	2	BRAKE LINK BAR, BENT
9	659-010W	1	BRAKE ROD WELDMENT
10	F-1158	6	1/4" STOVER LOCK NUT
11	H-1635	1	SPRING, EXT. 3/4 X 4" OAL
12	659-143P	1	SHIFT PLATE
13	659-159P	2	LOWER BRAKE LINK
14	H-1637	2	COMPRESSION SPRING

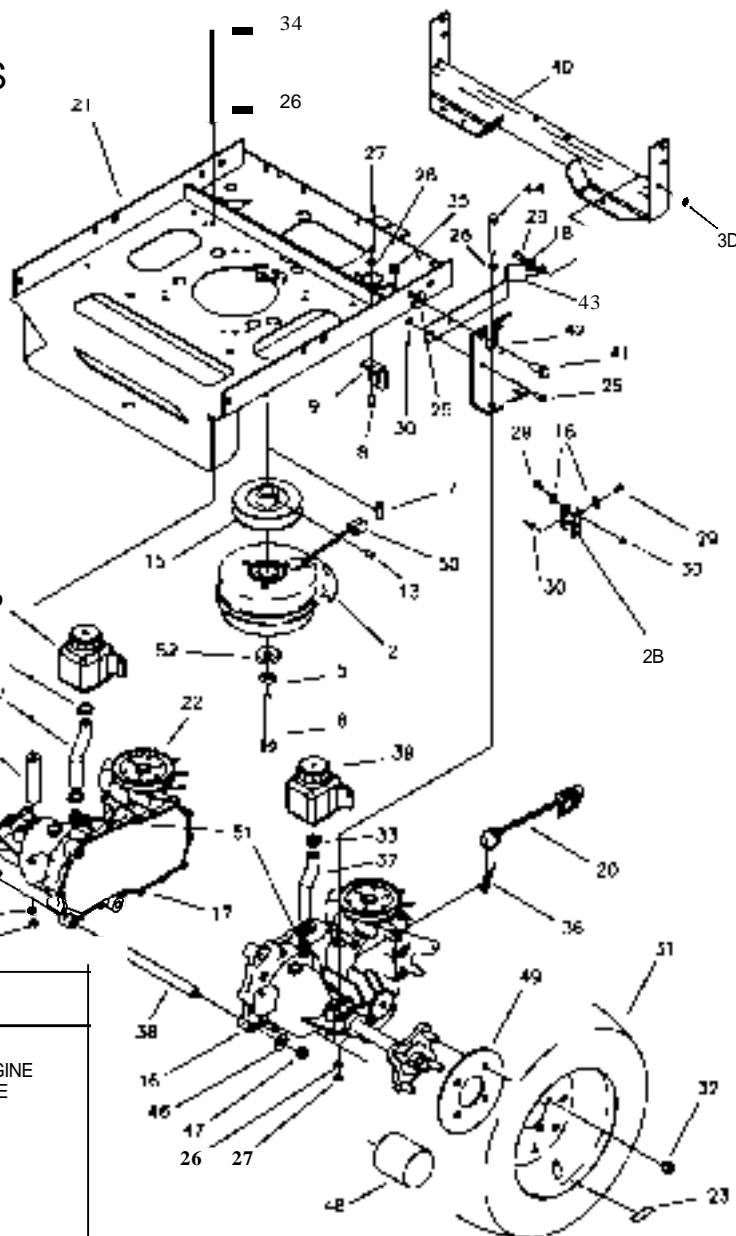
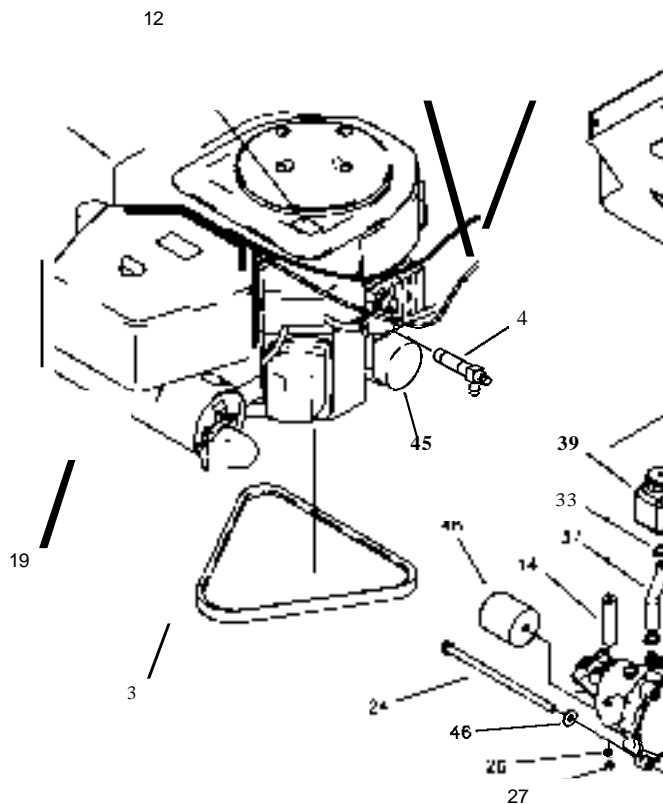
MOTOR AND TRANSMISSION ASSEMBLY & RELATED PARTS FOR JAZEE SR210



REF NO.	PART NO.	QTY.	DESCRIPTION
	M-5370	1	20 HP. BRIGGS ENGINE
	M-5367	1	26 HP. BRIGGS ENGINE
2	E-6317	1	CLUTCH-BRAKE, MAGSTOP 1"
3	O-3524	1	V-BELT-A71 KEVLAR
4	H-2589	1	OIL DRAIN VALVE
5	F-1019-04	1	7/16 LOCK WASHER
6	F-1904	1	7/16-20 X 2-1/2"
7	621-113P	1	KEY. 1/4 SQ. X 1-1/4"
8	F-1546	2	5/16-18 X 3/4" BOLT
9	659-119P	2	FREE WHEEL ANCHOR
10	H-2287	1	CHOKE CABLE, 20HP & 26HP
11	H-2236	1	THROTTLE CABLE 26HP
	H-2402	1	THROTTLE CABLE 20HP
12	P-10077-11	1	DECAL, "CLEAN"
13	F-1228	1	SETScrew, 1/4" X 1/4"
14	659-121P	2	REAR HYDRO BRACE
15	0-3726	1	MOTOR PULLEY, 1" BORE
16	0-3783-01	1	TRANSAXLE HYORO (RH)
17	0-3783-02	1	TRANSAXLE HYORO (LH)
18	F-1009-01	4	1/4" FLAT WASHER
19	H-2464	1	MUFFLER FOR 26HP BRIGGS
20	659-D66P	2	FREEWHEEL CHAIN W/SPRING
21	659-174W	1	MOTOR MOUNT
22	H-2539	2	FAN BLADE REPLACEMENT
23	P-113B4	2	DECAL, TIRE PRESSURE, 12 PSI
24	F-2048	1	3/8-16 X 12" HEX BOLT
25	F-1009-05	4	1/2" FLAT WASHER
26	F-1009-02	14	5/16" FLAT WASHER
27	F-1125	8	5/16-18 LOCK NUT
28	659-015W	1	CLUTCH STOP WELDMENT

REF NO.	PART NO.	QTY.	DESCRIPTION
29	F-1015-02	8	1/4-20 X 5/8" GR. 5
30	F-1158	8	1/4-20 LOCK NUTS
31	O-3729	2	TIRE, 18 X 8.5-8
32	F-1499	8	LUG NUT, 1/2 X 20
33	659-16QW	1	BRACE WELDMENT
34	659-116P	2	HYORO MOUNT BRACE
35	F-1759	2	1/2-13 X 1" BOLT
36	F-1652	2	5/16-18 X 6" BOLT
37	F-1005-05	2	1/2" STOVER LOCK NUT
38	659-120P	1	HYDRO BRACE
39	F-1544	4	5/16-18 X 3" BOLT
40	659-156P	2	FAN SHROUD
41	F-1009-03	2	3/8" FLAT WASHER
42	F-1005-03	1	3/8-16 LOCK NUT
43	E-6459	1	CLUTCH PIGTAIL
44	606-347P	1	15/32" 1.0. WASHER

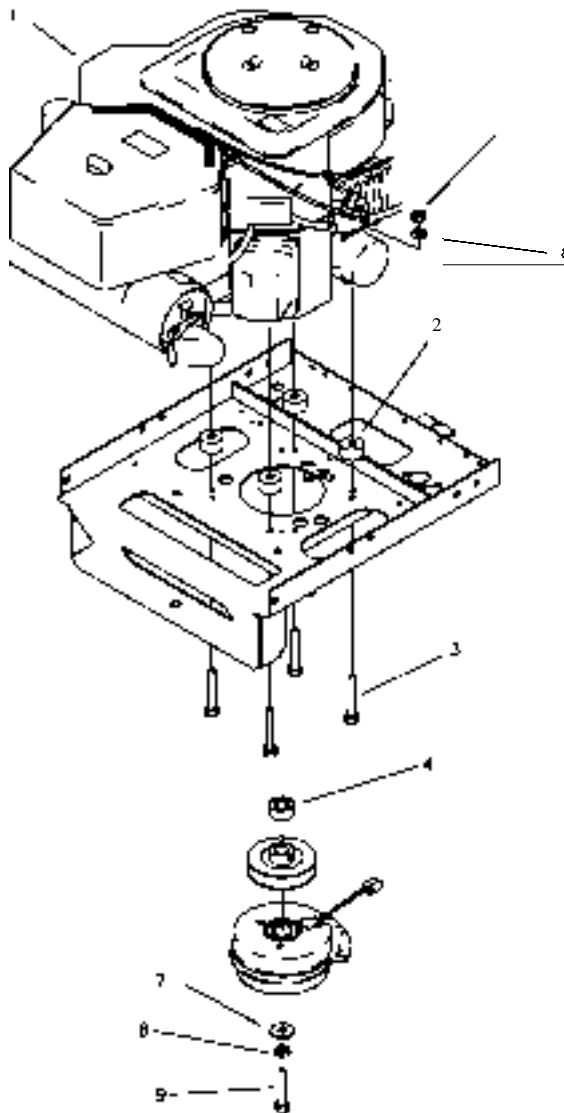
MOTOR AND TRANSMISSION ASSEMBLY & RELATED PARTS FOR JAZEE PRO SR360



REF NO.	PART NO.	QTY.	DESCRIPTION
	M-5363	1	21 HP KAWASAKI ENGINE
	M-5371	1	27 HP KOHLER COURAGE ENGINE
2	E-6247	1	CLUTCH-BRAKE. 1-1/8" BORE
3	O-3524	1	V-BELT-A71 KEVLAR
4	H-2589	1	OIL DRAIN (KOHLER)
	H-259D	1	OIL DRAIN (KAWASAKI)
5	F-1D19-04	1	7/16 LOCK WASHER
6	F-1904	1	7/16-20 X 2-1/2"
7	621-113P	1	KEY, 1/4 SQ. X 1-1/4"
8	F-1546	2	5/16-18 X 3/4" BOLT
9	659-119P	2	FREE WHEEL ANCHOR
10	H-2404	1	CHOKE CABLE, 27HP KOHLER
	H-2235	1	CHOKE CABLE, 21 HP KAWASAKI
11	H-2236	1	THROTTLE CABLE
12	P-10077-11	1	DECAL. "CLEAN"
13	F-1228	1	SETSCREW, 1/4" X 1/4"
14	659-121P	2	REAR HYDRO SPACER
15	659-153P	1	MOTOR PULLEY, 1" BORE
	659-154P	1	MOTOR PULLEY, 1-1/8" BORE
16	O-3788-01	1	TRANSAXLE ZT-2800 (RH)
17	D-3788-02	1	TRANSAXLE ZT-2800 (LH)
18	F-1009-01	4	1/4" FLAT WASHER
19	H-2284	1	MUFFLER FOR 21 HP KAWASAKI
	H-2513	1	MUFFLER, 27HP KOHLER COURAGE
20	B61-D66P	2	FREEWHEEL CHAIN W/SPRING
21	659-174W	1	MOTOR MOUNT
22	H-2539	2	FAN BLADE REPLACEMENT
23	P-11384	2	DECAL. TIRE PRESSURE, 12 PSI
24	F-2007	1	3/8-16 X 12-1/2" BOLT
25	F-1009-05	4	1/2" FLAT WASHER
26	F-1009-02	14	5/16" FLAT WASHER
27	F-1125	8	5/16-18 LOCK NUT
28	659-015W	1	CLUTCH STOP WELDMENT
29	F-1015-02	B	1/4-20 X 5/8" GR. 5
30	F-1158	B	1/4-20 LOCK NUTS
31	O-3787	2	TIRE, 20"-12 X 10 w 52" & 60" DECK

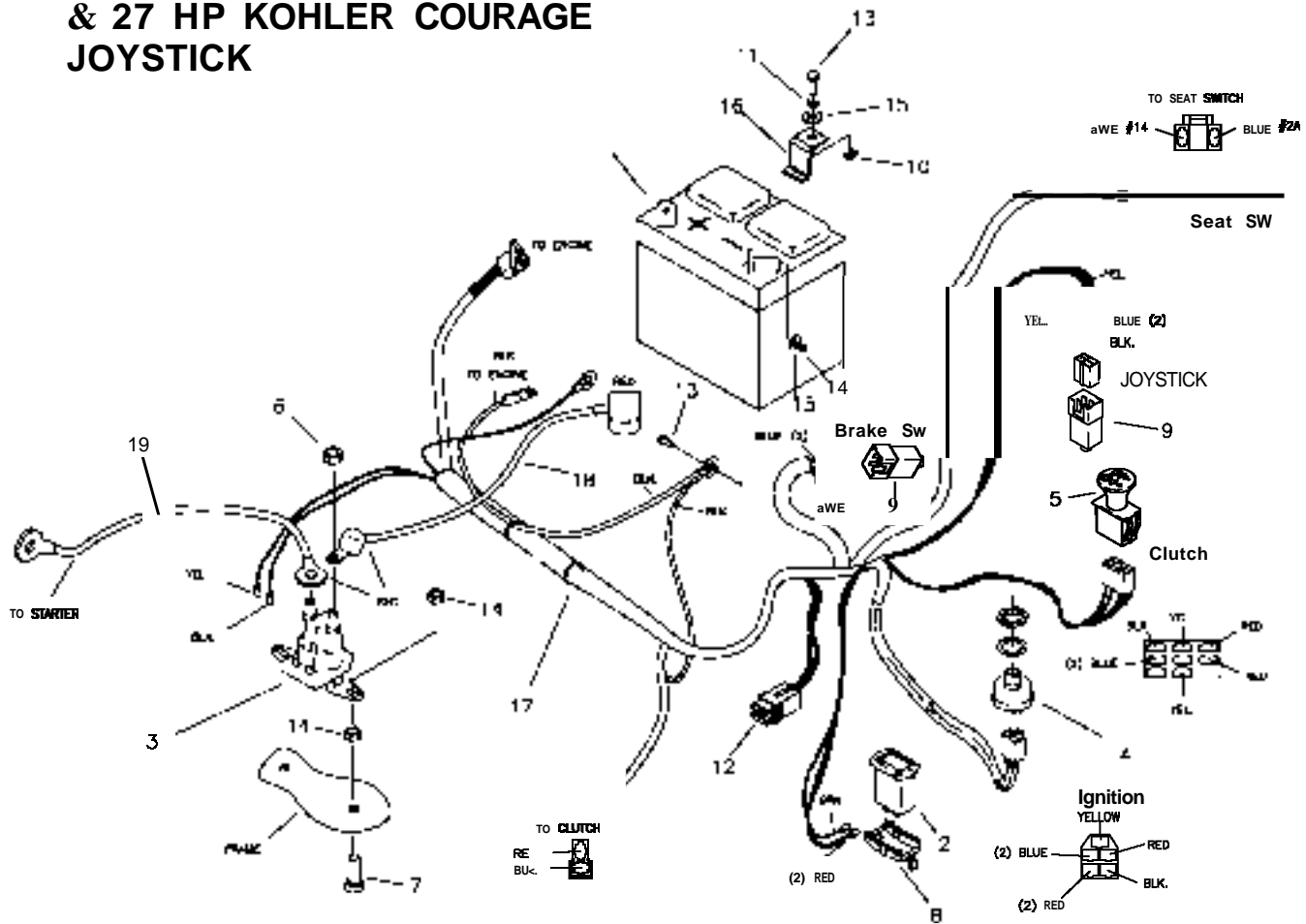
REF NO.	PART NO.	QTY.	DESCRIPTION
	D-3353	2	TIRE, 20"-10 X 10 (w/4S" DECK)
32	F-1499	8	LUG NUT, 1/2 X 20
33	H-2535	4	HOSE CLAMP
34	F-1652	2	5/16-18 X 6" BOLT
35	F-1005-05	2	1/2" STOVER LOCK NUT
36	F-1492	2	RUE RING, 5/16-3/8 PIN
37	H-2549	2	HOSE, 5" LONG
38	659-173P	1	HYDRO BRACE
39	O-3791	2	SMALL HYDRO TANK
40	659-16QW	1	BRACE WELDMENT
41	F-1759	2	1/2-13 X 1" BOLT
42	659-116P	2	HYDRO MOUNT BRACE
43	659-156P	2	FAN SHROUD
44	F-1544	4	5/16-18 X 3" BOLT
45	H-2567	1	OIL FILTER, JAZEE PRO
46	F-1009-03	2	3/8" FLAT WASHER
47	F-1005-03	1	3/8-16 LOCK NUT
48	H-2567	2	TRANSAXLE OIL FILTER
49	659-092P	2	WHEEL BACKING PLATE
50	E-6459	1	CLUTCH PIGTAIL
51	H-2517	2	VENT TUBE ADAPTER
52	606-347P	1	15/32" I.D. WASHER

**MOTOR AND TRANSMISSION
ASSEMBLY & RELATED PARTS
FOR JAZEE PRO SR360 (CON'T)**



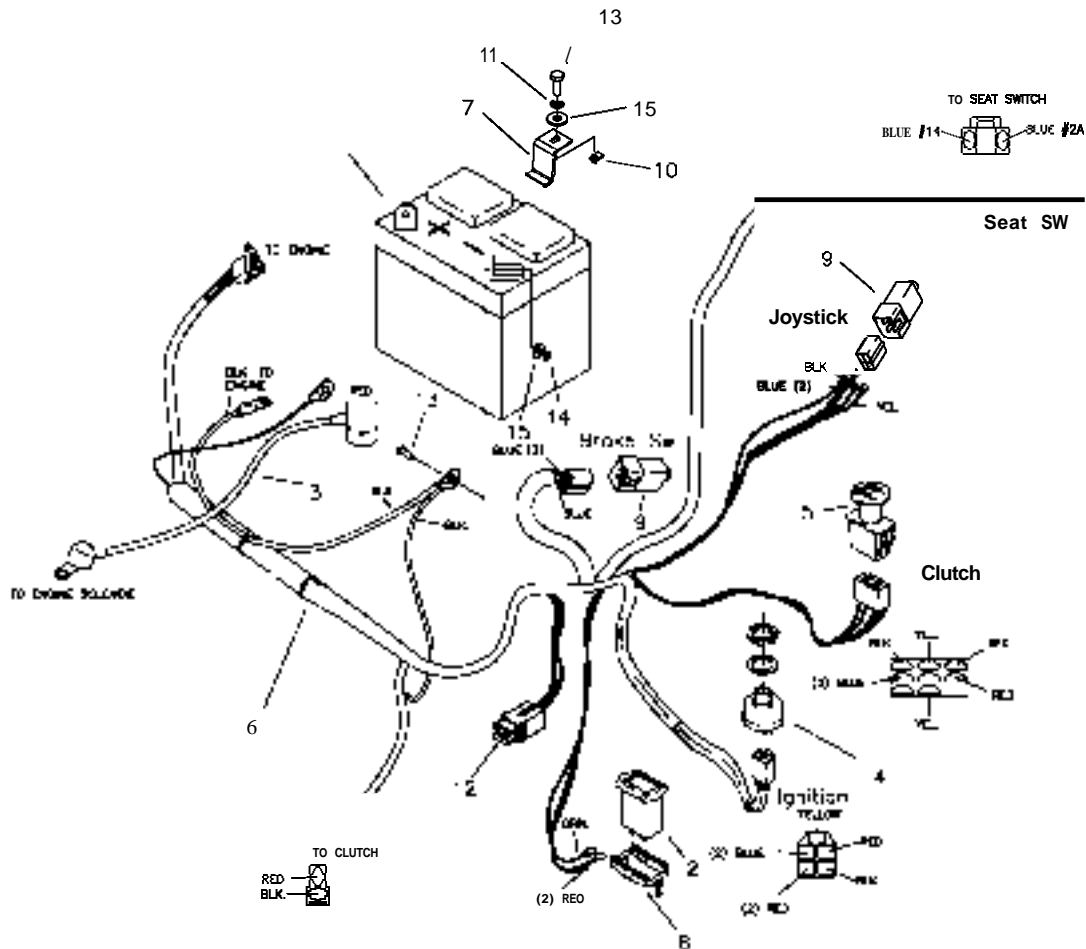
REF NO.	PART NO.	QTY.	DESCRIPTION
	M-5363	1	21 HP KAWASAKI ENGINE
	M-5371	1	27 HP KOHLER COURAGE ENGINE
2	F-2045	4	0.47 x 1.38 x 0.69 SPACER (KOHLER)
	F-2046	4	0.33 x 1.38 x 0.50 SPACER (KAWASAKI)
3	F-1015-19	4	5/16-18 X 2" CAPSCREW (KAWASAKI)
	F-1394	4	3/8-16 x 1" 80LT (KOHLER)
4	F-2043	1	1.14 x 1.50 x 0.69 SPACER (KOHLER)
	F-2044	1	1.14 x 1.50 x 0.50 SPACER (KAWASAKI)
5	F-1125	4	5/8-18 STOVER NUT (KAWASAKI)
6	F-1019-02	4	5/16" LOCK WASHER (KAWASAKI)
7	606-347P	1	7/16 HEAVY FLAT WASHER
8	F-1019-04	1	7/16" LOCK WASHER
9	F-1904	1	7/16-20 x 2-1/2" BOLT

E-6405 WIRE HARNESS & RELATED PARTS FOR 20 HP, 26 HP BRIGGS, & 27 HP KOHLER COURAGE JOYSTICK



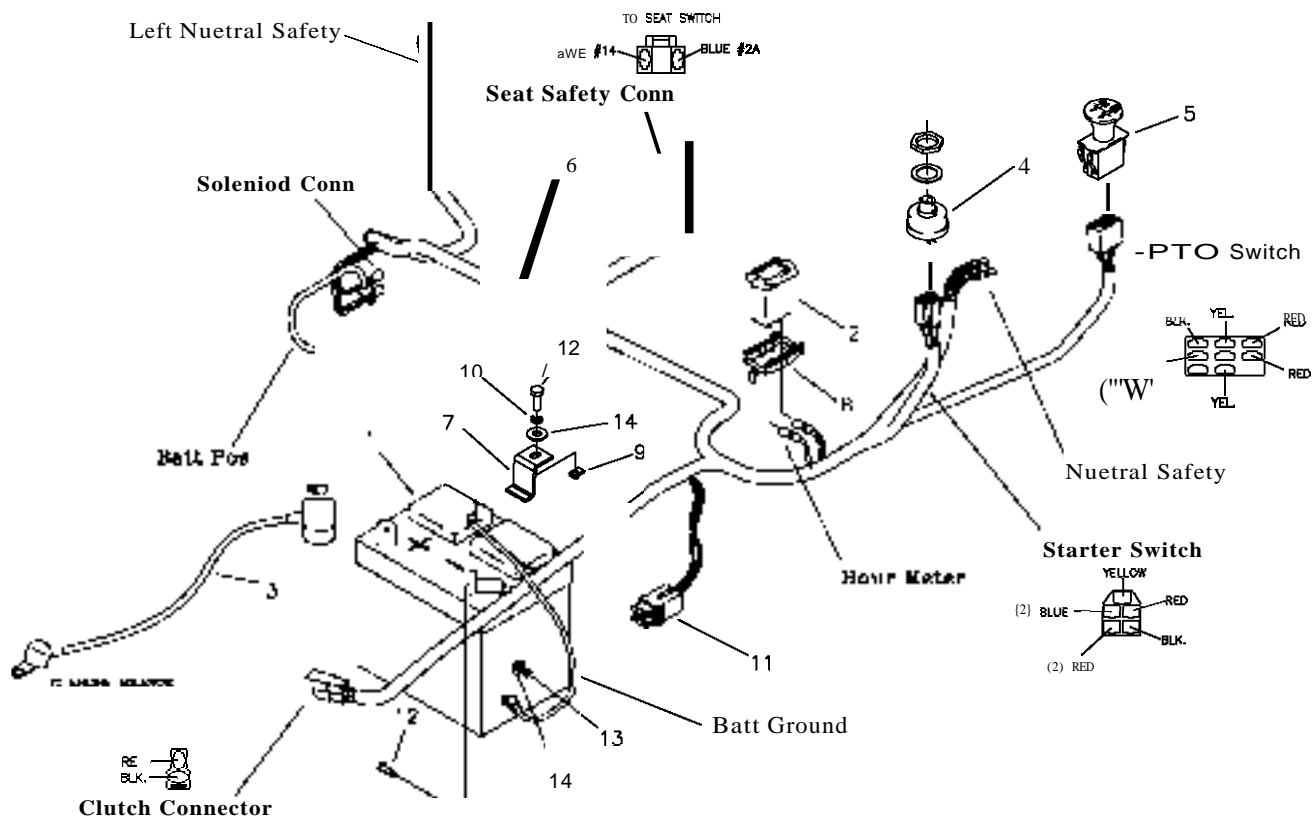
REF NO.	PART NO.	QTY.	DESCRIPTION
1	E-5812	1	BATIERY
2	E-5878	1	HOUR METER
3	E-6054	1	SOLENOID
4	E-5873	1	START SWITCH
5	E-6403	1	CLUTCH SWITCH
6	F-1011-01	2	1/4-20 NUT
7	F-1D15-05	2	1/4-20 X 1" GR. 5
B	E-6369	1	RETAINER CLIP
9	E-6297	2	BRAKE SWITCH
10	F-1858	1	1/4-20 U-NUT
11	F-1019-01	1	1/4" LOCK WASHER
12	E-6207	2	FUSE, HATC-30
13	F-1538	3	1/4-20 X 3/4" GR. 5
14	F-1158	6	1/4-20 LOCK NUT
15	F-1009-D1	5	1/4" FLAT WASHER
16	659-137P	1	BATIERY HOLD DOWN
17	E-6405	1	WIRE HARNESS
18	E-6418	1	CABLE, BATIERY TO SOLENOID
19	E-6419	1	CABLE. SOLENOID TO ENGINE
-NOT SHOWN-			
	E-6374	1	SEAT SWITCH
	E-6281	1	COVER (KEY SWITCH)

E-6415 WIRE HARNESS & RELATED PARTS FOR 21 HP KAWASAKI JOYSTICK



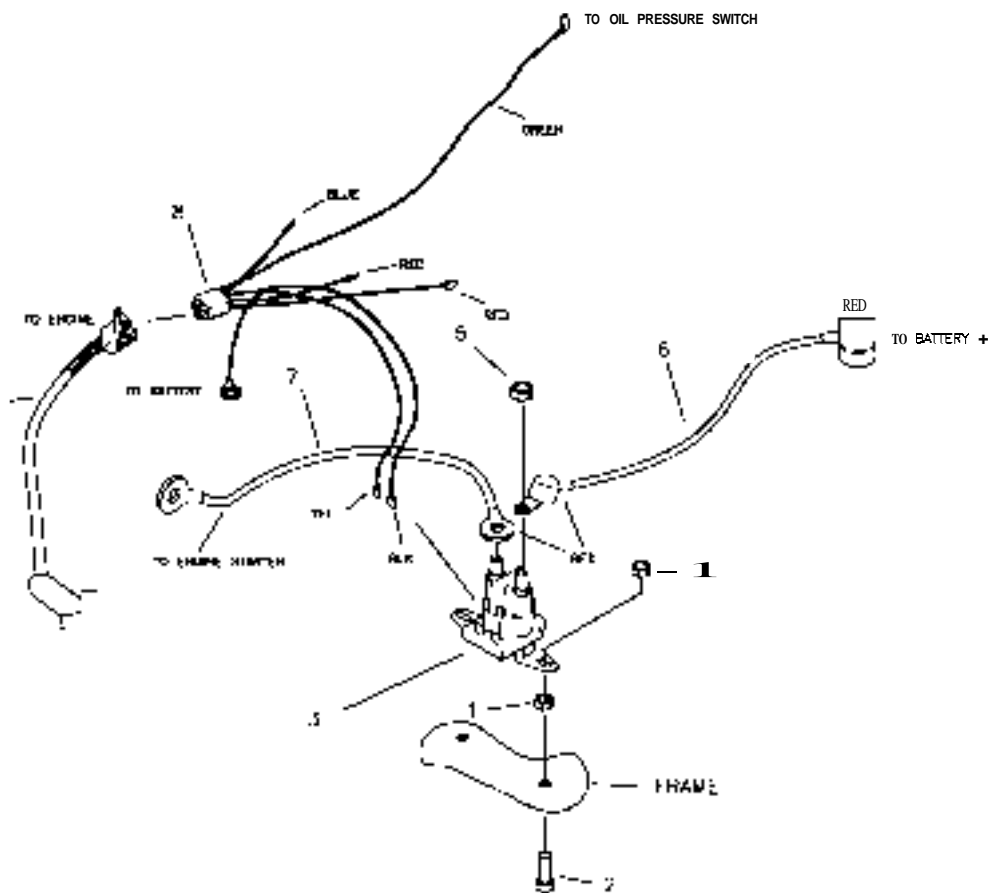
REF NO.	PART NO.	QTY.	DESCRIPTION
1	E-5812	1	BATIERY
2	E-5878	1	HOUR METER
3	E-6418	1	CABLE, BATIERY TO SOLENOID
4	E-5873	1	START SWITCH
5	E-6403	1	CLUTCH SWITCH
6	E-6405	1	WIRE HARNESS
7	659-137P	1	BATIERY HOLD DOWN
8	E-6369	1	RETAINER CLIP
9	E-6297	2	BRAKE SWITCH
10	F-1858	1	1/4-20 U-NUT
11	F-1019-01	1	1/4" LOCK WASHER
12	E-6207	2	FUSE. #ATC-30
13	F-1538	3	1/4-20 X 3/4" GR. 5
14	F-1158	2	1/4-20 LOCK NUT
15	F-1009-01	5	1 4" FLAT WASHER
			-NOT SHOWN-
	E-6374	1	SEAT SWITCH
	E-6281	1	COVER (KEY SWITCH)

**E-6416 WIRE HARNESS
& RELATED PARTS
20HP & 26HP BRIGGS
21HP KAWASAKI
27HP KOHLER
(TWINSTICK)**



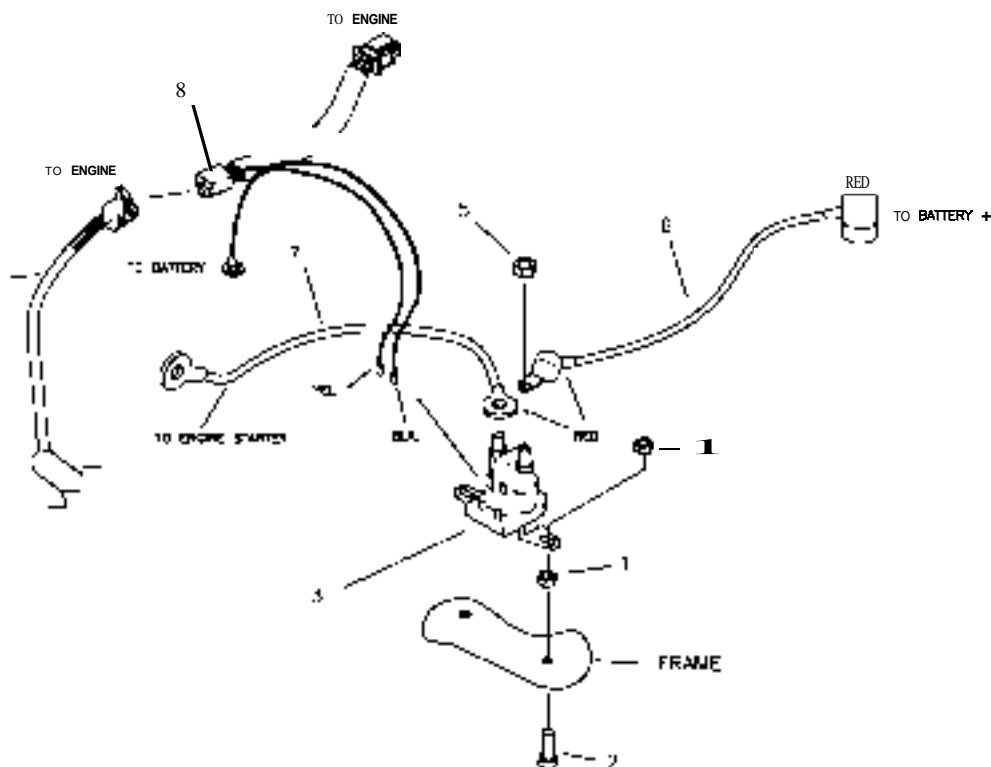
REF NO.	PART NO.	QTY.	DESCRIPTION
1	E-5812	1	BATIERY
2	E-5878	1	HOUR METER
3	E-6418	1	CABLE. BATIERY TO SOLENOID
4	E-5873	1	START SWITCH
5	E-6403	1	CLUTCH SWITCH
6	E-6416	1	WIRE HARNESS
7	659-137P	1	BATIERY HOLD DOWN
8	E-6369	1	RETAINER CLIP
9	F-1858	1	1/4-20 U-NUT
10	F-1019-01	1	1/4" LOCK WASHER
11	E-6207	2	FUSE. #ATC-30
12	F-1538	3	1/4-20 X 3/4" GR. 5
13	F-1158	2	1/4-20 LOCK NUT
14	F-1009-01	5	1 4" FLAT WASHER
			-NOT SHOWN-
	E-6374	1	SEAT SWITCH
	E-6281	1	COVER (KEY SWITCH)

E-6417 KAWASAKI ADAPTER HARNESS & RELATED PARTS



REF NO.	PART NO.	QTY.	DESCRIPTION
1	F-1158	4	1/4-20 LOCK NUT
2	F-1015-05	2	1/4-20 X 1" GR. 5
3	E-6054	1	SOLENOID
4	E-6415	1	KOHLER WIRE HARNESS (JOYSTICK)
	E-6416	1	KOHLER WIRE HARNESS (TWINSTICK)
5	F-1011-01	2	1/4-20 NUT
6	E-6418	1	CABLE, BATTERY TO SOLENOID
7	E-6419	1	CABLE, SOLENOID TO ENGINE
8	E-6417	1	KAWASAKI HARNESS ADAPTER

E-6436 ADAPTER
 HARNESS & RELATED PARTS
 20 HP BRIGGS
 26 HP BRIGGS
 27 HP KOHLER
 TWINSTICKS



REF NO.	PART NO.	QTY.	DESCRIPTION
1	F-1158	4	1/4-20 LOCK NUT
2	F-1015-05	2	1/4-20 X 1" GR. 5
3	E-6054	1	SOLENOID
4	E-6415	1	KOHLER WIRE HARNESS (JOYSTICK)
	E-6416		KOHLER WIRE HARNESS (TWINSTICK)
5	F-1011-01	2	1/4-20 NUT
6	E-6418	1	CABLE. BATTERY TO SOLENOID
7	E-6419	1	CABLE. SOLENOID TO ENGINE
8	E-6436	1	BRIGGS ENGINE ADAPTER