

REPAIR PARTS MANUAL
FOR
COUNTRY
CLIPPER®



SR1005



COUNTRY CLIPPER "CHARGER"

ZERO TURN RADIUS MOWER TABLE OF CONTENTS

PAGE.... CONTENTS

SECTION 1 – MOWER DECKS AND RELATED PARTS

- 1-1. . . . DOUBLE IDLER DECK ASSEMBLY
- 1-2. . . . DECK SPINDLE ASSEMBLY
- 1-3. . . . DOUBLE IDLER DRIVE BELT IDLER & RELATED PARTS
- 1-4. . . . LIFT HANDLE ASSEMBLY & RELATED PARTS
- 1-5. . . . LIFT ASSEMBLY & RELATED PARTS
- 1-6. . . . TRANSMISSION IDLERS & RELATED PARTS

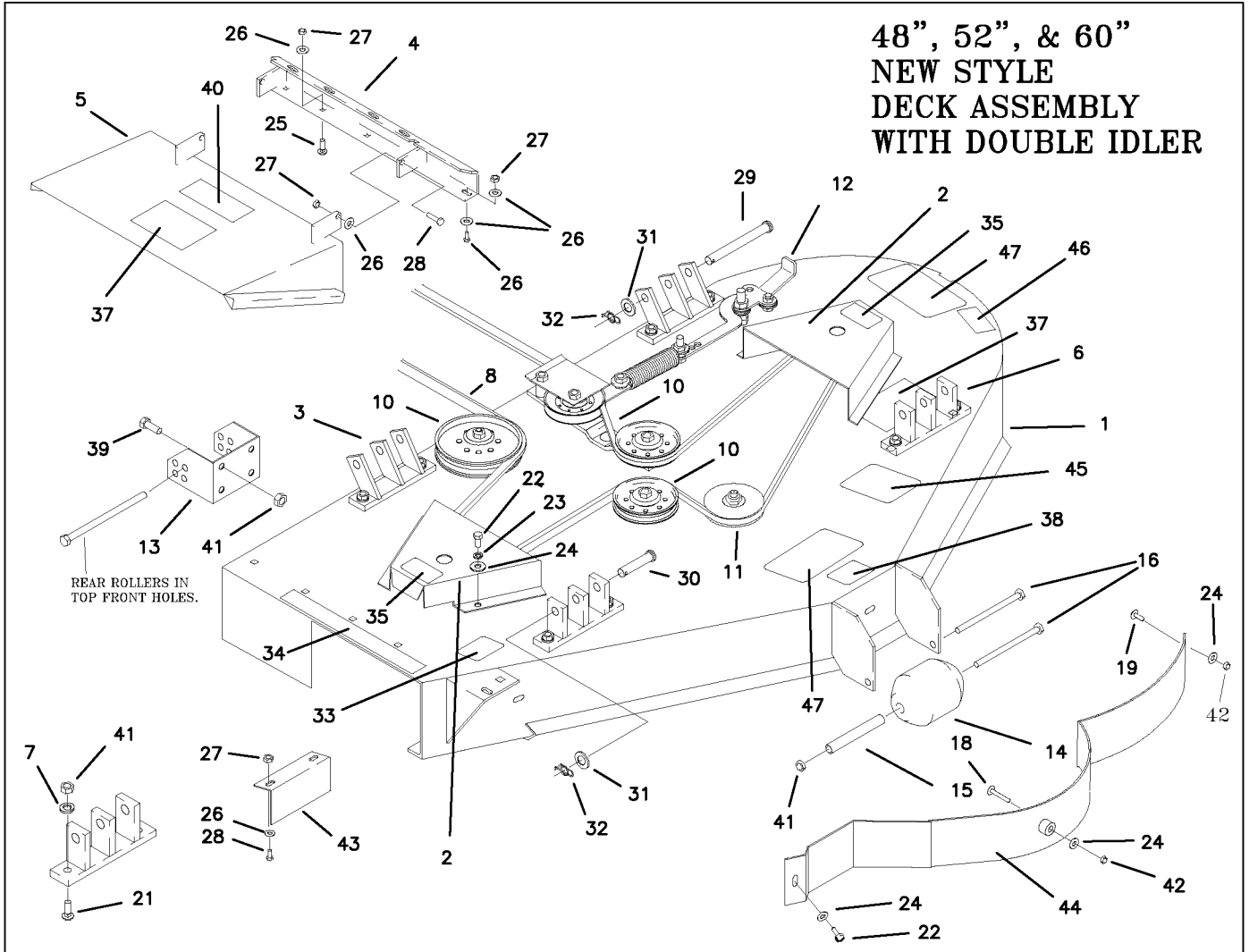
SECTION 2 –TRACTOR FRAME AND RELATED PARTS

- 2-7. . . .CASTER WHEEL ASSEMBLY
- 2-8. . . .FRAME SIDES & RELATED PARTS
- 2-9. . . .FENDER ASSEMBLY
- 2-10. . . .SEAT, FOOT DECK & RELATED PARTS
- 2-11. . . .FRONT STEP ASSEMBLY (MODELS WITH S/N 663V1 & AFTER)

SECTION 3 –TRACTOR DRIVE AND RELATED PARTS

- 3-12. . . .FUEL TANK ASSEMBLY
- 3-13. . . .JOYSTICK STEERING CONTROL & RELATED PARTS
- 3-14. . . .JOYSTICK STEERING CONTROL & RELATED PARTS (continued) (3/8" LINKAGE)
- 3-15. . . .RIGHT HAND STEERING CONTROL (TWIN STICK)
- 3-16. . . .LEFT HAND STEERING CONTROL (TWIN STICK)
- 3-17. . . .PARKING BRAKE ASSEMBLY & RELATED PARTS
- 3-18. . . .GEAR MOTOR WHEEL ASSEMBLY
- 3-19. . . .MOTOR ASSEMBLY & RELATED PARTS
- 3-20. . . .HIGH PRESSURE LINES & FITTINGS
- 3-21. . . .OIL RETURN LINES & COOLER ASSEMBLY
- 3-22. . . .E-6415 WIRE HARNESS & RELATED PARTS
- 3-23. . . .E-6416 WIRE HARNESS & RELATED PARTS
- 3-24. . . .E-6417 WIRE HARNESS & RELATED PARTS

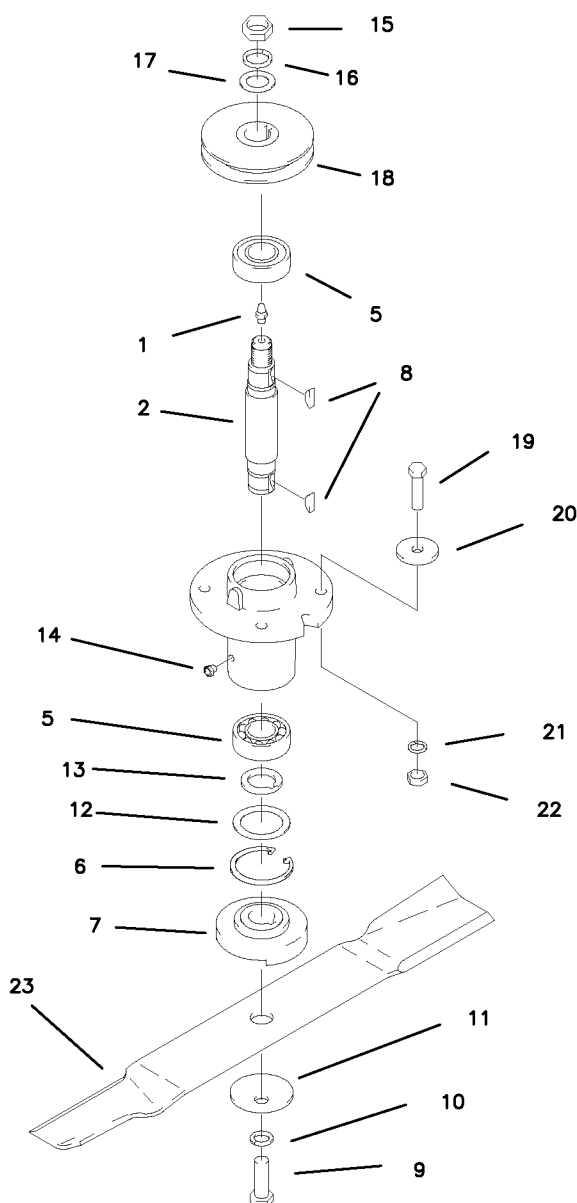
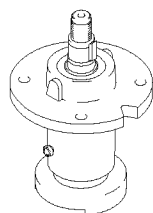
48", 52", & 60"
NEW STYLE
DECK ASSEMBLY
WITH DOUBLE IDLER



REF NO.	PART NO.	QTY.	DESCRIPTION	REF NO.	PART NO.	QTY.	DESCRIPTION
1	668-018A	1	48" DECK, W/DECALS	24	F-1009-01	7	1/4" FLAT WASHER
	668-019A	1	52" DECK, W/DECALS	25	F-1671	8	CARRIAGE BOLT 5/16 X 3/4
	668-020A	1	60" DECK, W/DECALS	26	F-1009-02	8	5/16" FLAT WASHER
2	668-023A	2	48" PULLEY COVER, W/DECAL	27	F-1125	11	5/16-18 LOCKNUT
	668-024A	2	52" PULLEY COVER W/DECAL	28	F-1015-15	5	5/16-18 X 1" GR. 5
	668-025A	2	60" PULLEY COVER W/DECAL	29	H-2240	2	PIN, 1/2" X 4-1/2"
3	651-009W	2	DECK HANGER ON 48" ONLY	30	F-1889	2	PIN, 1/2" X 2-1/2"
4	637-053W	1	OUTLET STIFFENER	31	F-1521	4	1/2" FLAT WASHER
5	668-010A	1	48" DECK CHUTE W/DECAL	32	H-2239	4	RUE RING 1/2"
	668-011A	1	52 & 60" DECK CHUTE W/DECAL	33	P-10947	1	DECAL, "GREASE SPINDLE"
6	643-016W	2 & 4	DECK HANGER (2 ON 42" & 4 ON 52 & 60"	34	P-10122	1	DECAL, "MISSING CHUTE"
7	F-1019-03	20	3/8 LOCK WASHER	35	P-10935	2	DECAL, "ROTATING..."
8	D-3775-W	1	V-BELT, (KEVLAR) B-158 (48")	37	P-10941	2	DECAL, "MULTI PERIL"
	D-3776-W	1	V-BELT, (KEVLAR) B-180 (52" & 60")	38	P-11413	1	DECAL, "HOIST POINT"
10	-----	-----	DOUBLE IDLER ASSEMBLY (SEE PG.1-3)	39	-----	-----	-----
11	-----	3	SPINDLE ASSEMBLY (SEE PG.1-2)	40	P-10937	1	DECAL, "WARNING"
12	-----	-----	BELT TIGHTING SYSTEM (SEE PG.1-3)	41	F-1005-03	18-26	LOCKNUT, 3/8 STOVER
13	609-182P	2	REAR SCALPER BRACKET (52" & 60")	42	F-1158	2	LOCKNUT, 1/4-20
14	H-1948	5	ROLLER, 3-3/4 DIA. X 4-13/16	43	629-230P	1	AIR BAFFLE (48" & 52")
15	609-183P	5	WHEEL BUSHING		643-042P	1	AIR BAFFLE (60")
16	F-1741	6	3/8-16 X 6" GR. 5	44	629-241W	1	DUST BAFFLE WLDT, 48"
17	-	-	-		629-229W	1	DUST BAFFLE WLDT, 52"
18	F-1935	1	CARRIAGE BOLT, 1/4 X 1 1/2		643-047W	1	DUST BAFFLE WLDT, 60"
19	F-1823	1	CARRIAGE BOLT, 1/4 X 3/4	45	P-11932	1	DECAL, BELT ROUTING
20	-	-	-	46	P-11950	1	DECAL, DECK SIZE 48"
21	F-1672	10	CARRIAGE BOLT, 3/8 X 1-1/4		P-11951	1	DECAL, DECK SIZE 52"
22	F-1538	5	1/4-20 X 3/4 GR. 5		P-11952	1	DECAL, DECK SIZE 60"
23	F-1019-01	4	1/4" LOCKWASHER	47	H-1932	4	SAFETY TREAD (52" & 60")

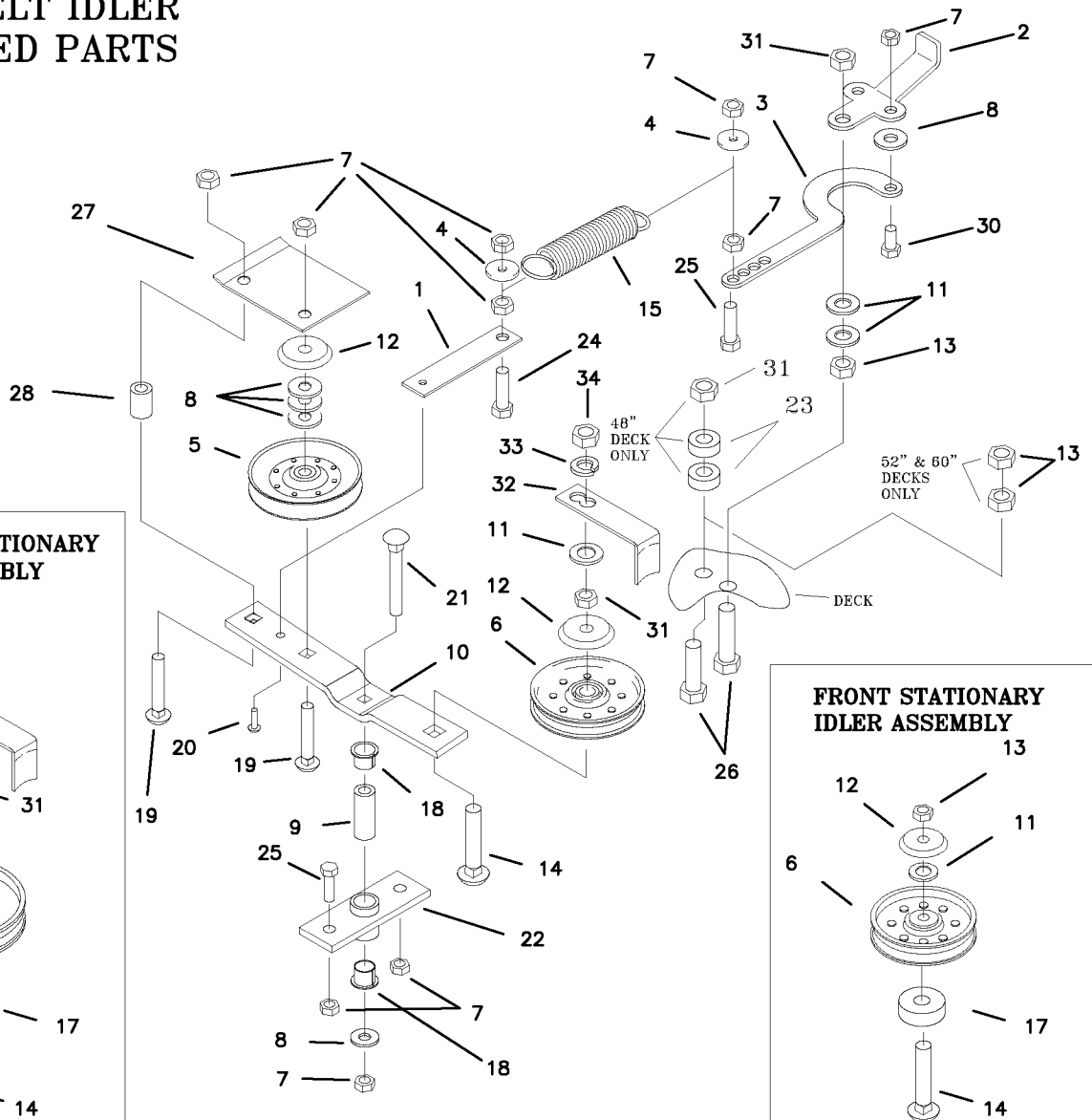
DECK SPINDLE ASSEMBLY

**660-045A
SPINDLE ASSEMBLY**

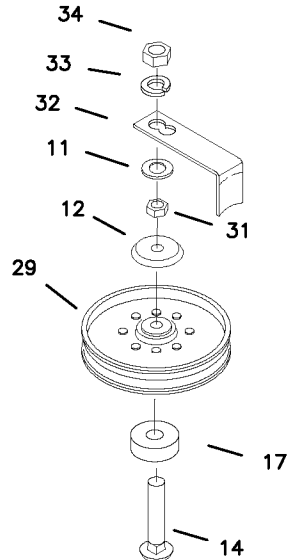


REF NO.	PART NO.	QTY.	DESCRIPTION	REF NO.	PART NO.	QTY.	DESCRIPTION
-	660-045A	-	SPINDLE ASSEMBLY	18	609-155P	-	SPINDLE PULLEY, 48"
1	H-1056	1	GREASE FITTING	-	D-3732-03	-	SPINDLE PULLEY, 52"
2	609-162P	1	SPINDLE SHAFT	-	668-006P	-	SPINDLE PULLEY, 60"
3	-----	-	-----	19	F-1572	4	3/8-24 X 1 1/2" HHCS GR. 5
4	-----	-	-----	20	609-034P	4	SPINDLE SPACER REINFORCEMENT
5	D-3058	2	BEARING, #6205-2RS	21	F-1019-03	4	3/8" LOCK WASHER
6	H-1893	1	SNAP RING INT. 52MM	22	F-1573	4	3/8-24 LOCKNUT, M-F
7	609-152P	1	BLADE SPACER	23	H-1714	1	BLADE, HIGH L, 17" CUT 48"
8	D-1004-02	2	KEY, WOODRUF, 1/4 X 3/4	-	H-2246	-	BLADE, HIGH L, 18 3/8" CUT 52"
9	F-1526	1	1/2-13 X 1 1/2" HHCS GR. 5	-	H-1708	-	BLADE, HIGH L, 21" CUT 60"
10	F-1464	1	1/2" LOCK WASHER	-	-	-	OPTIONAL BLADES
11	F-1507	1	WASHER, 1/2" CUPPED	-	H-1666	-	BLADE, LOW L, 17" CUT 48"
12	609-151P	1	WASHER, SEAL	-	H-2387	-	BLADE, LOW L, 18 3/8" CUT, 52"
13	609-073P	1	ARBOR SPACER	-	H-1667	-	BLADE, LOW L, 21" CUT, 60"
14	H-2066	1	GREASE VENT 5 LBS.	-	-	-	-
15	F-1461	1	3/4-16 NUT, HEX JAM	-	H-2202	-	BLADE, GATOR, 17" CUT 48"
16	F-1463	1	3/4" LOCK WASHER	-	H-2251	-	BLADE, GATOR, 18 3/8" CUT 52"
17	F-1510	1	3/4" WASHER, FLAT STD.	-	H-2122	-	BLADE, GATOR, 21" CUT 60"

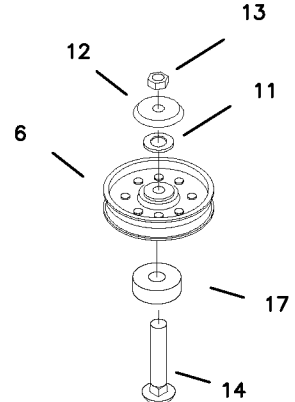
DOUBLE IDLER DRIVE BELT IDLER & RELATED PARTS



RIGHT REAR STATIONARY IDLER ASSEMBLY

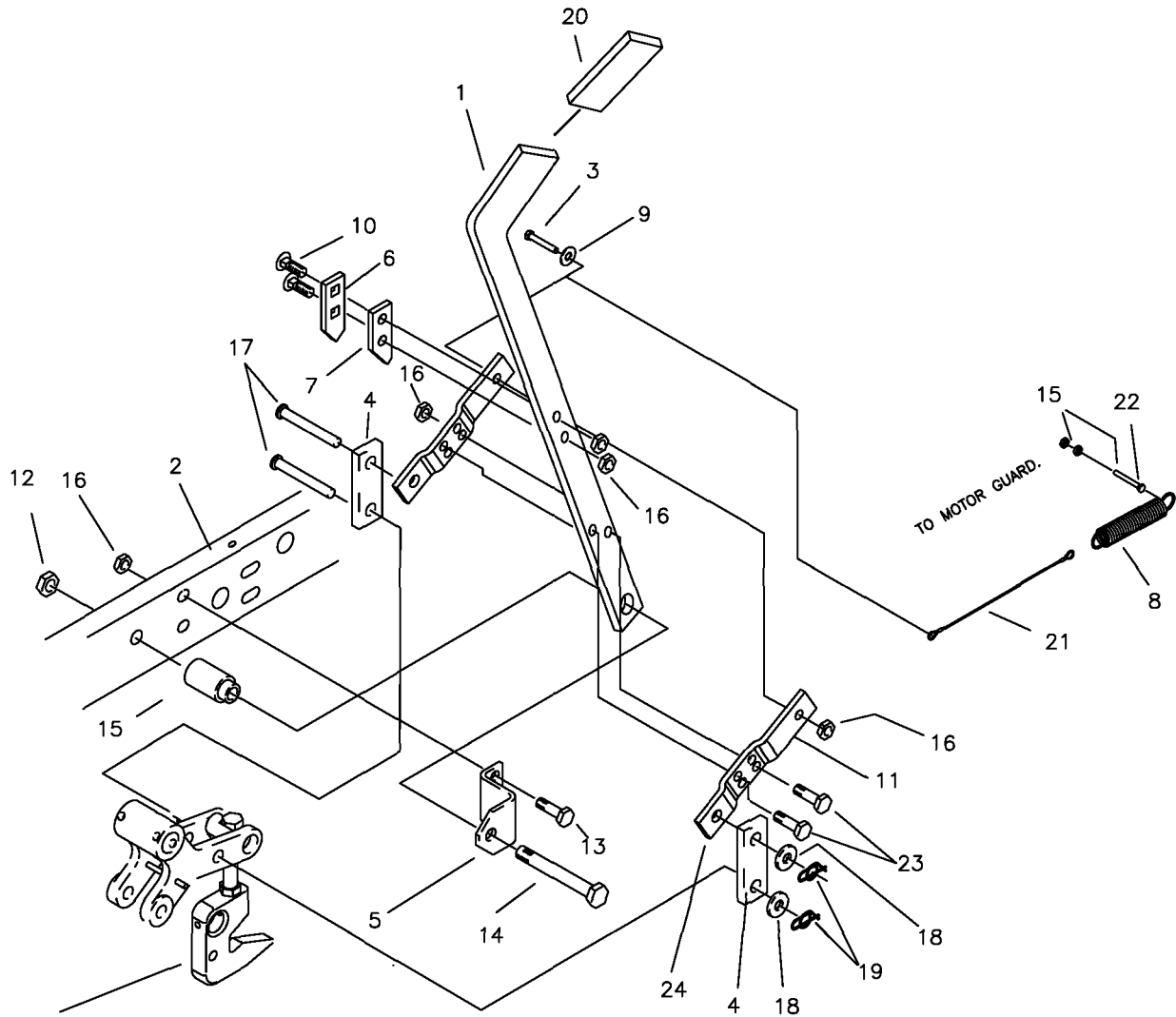


FRONT STATIONARY IDLER ASSEMBLY



REF NO.	PART NO.	QTY.	DESCRIPTION	REF NO.	PART NO.	QTY.	DESCRIPTION
1	660-035P	1	EXTENSION FOR SPRING	22	660-034W	1	MOUNT, DOUBLE IDLER
2	660-030P	1	HANDLE, BELT TIGHTENER	23	660-038P	3	3/8" THICK SPACER
3	660-031P	1	ARM, BELT TIGHTENER	24	F-1307	2	3/8-16 X 1-1/4" GR. 5
4	609-034P	2	SPINDLE SPACER REINFORCEMENT	25	F-1394	4	3/8-16 X 1" GR. 5
5	D-3758	1	"V" IDLER PULLEY	26	F-1526	4	1/2-13 X 1-1/2" GR. 5
6	D-3338	2	IDLER PULLEY	27	668-022P	1	BELT GUARD
7	F-1005-03	14	3/8 LOCK NUT	28	668-021P	1	SPACER, BELT GUARD
8	F-1009-03	5	3/8 FLAT WASHER	29	D-3774	1	5" IDLER PULLEY
9	659-085P	1	MOUNTING PIN	30	F-1558	1	3/8-16 X 7/8 GR. 5
10	660-036P	1	IDLER ARM	31	F-1966	4	1/2" THIN NYLOC NUT
11	F-1521	5	1/2" FLAT WASHER	32	660-060P	2	BELT KEEPER
12	620-201P	4	BEARING CAP	33	F-1464	2	1/2" LOCK WASHER
13	F-1005-05	6	1/2" LOCK NUT	34	F-1489	2	1/2" THIN NUT
14	F-1822	3	1/2-13 X 2-1/4" GR. 5				
15	H-2092	1	SPRING				
16	661-015P	1	SHACKLE				
17	660-037P	2	1/2" THICK SPACER				
18	D-3730	2	BUSHING, TEFLON COATED				
19	F-1976	2	3/8-16 X 1-3/4" CARRIAGE BOLT				
20	F-1733	1	1/4" DRIVE STUD				
21	F-1865	1	3/8-16 X 2-1/2" CARRIAGE BOLT				

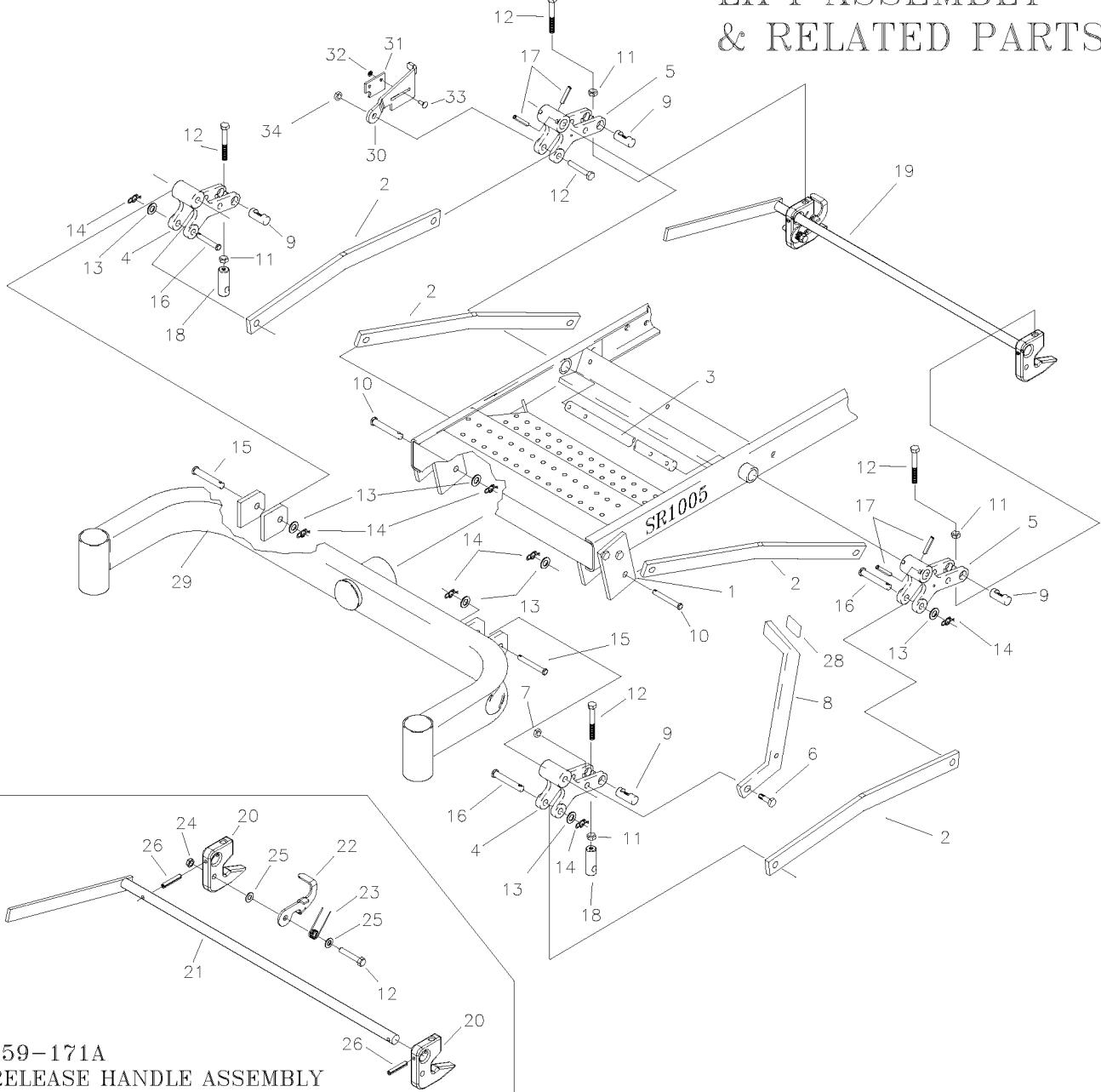
LIFT HANDLE ASSEMBLY & RELATED PARTS



SEE ASSEMBLY NUMBER
PAGE 1-5

REF NO.	PART NO.	QTY.	DESCRIPTION	REF NO.	PART NO.	QTY.	DESCRIPTION
1	659-060P	1	LIFT HANDLE	15	642-095P	1	HANDLE PIVOT PIN
2	659-022W	1	FRAME WELDMENT, LH.	16	F-1005-03	5	NUT, 3/8-16 LOCKNUT (STOVER)
3	F-1073	1	3/8-18 X 2" GR 5	17	F-1889	2	CLEVIS PIN, 1/2 X 2 5/8"
4	642-061P	2	HANDLE LINK	18	F-1521	2	1/2" FLAT WASHER
5	642-041P	1	HANDLE PIVOT BRACKET	19	H-2239	2	RUE RING, 1/2"
6	642-127P	1	TOP PEG LATCH PLATE	20	H-2324	1	VINYL GRIP, 3/8 X 1 1/2"
7	642-126P	1	TOP PEG SPACER PLATE	21	H-2460	1	CABLE
8	H-1610	1	SPRING, 1 1/2" OD. X 8"	22	F-1293	2	1/2-13 X 1 1/2" GR. 5
9	F-1009-03	1	FLAT WASHER, 3/8"	23	F-1307	2	1/2-13 X 1 1/4" GR. 5
10	F-1672	2	CARRIAGE BOLT, 3/8-16 X 1 1/4"	24	642-060P	2	SPRING ANCHOR PLATE
11	659-049P	2	SPRING ANCHOR PLATE				
12	F-1005-05	1	NUT, 1/2-13 LOCKNUT				
13	F-1558	2	3/8-16 X 7/8" GR. 5				
14	F-1439	1	1/2-13 X 3" GR. 5				

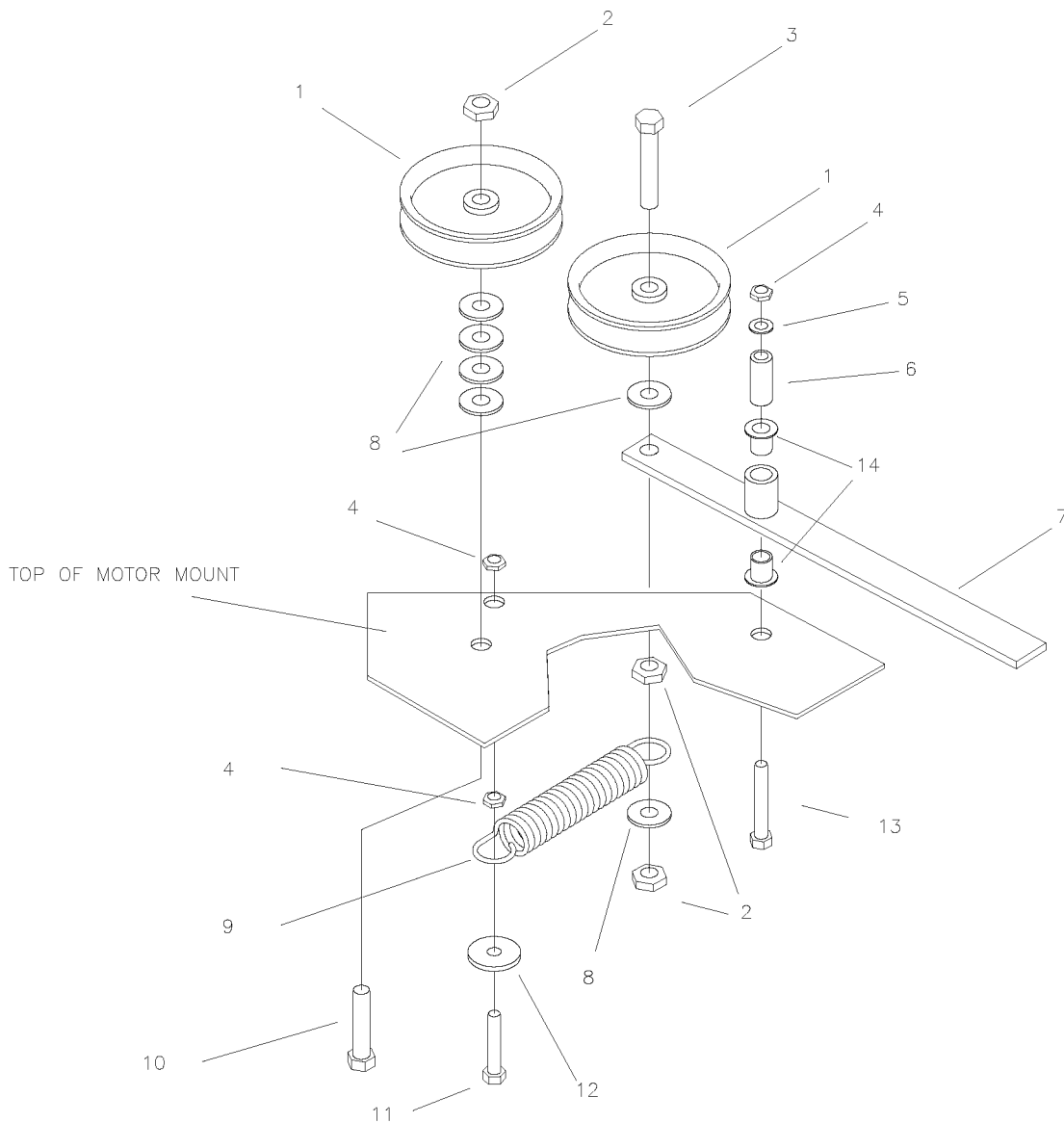
LIFT ASSEMBLY & RELATED PARTS



**659-171A
RELEASE HANDLE ASSEMBLY**

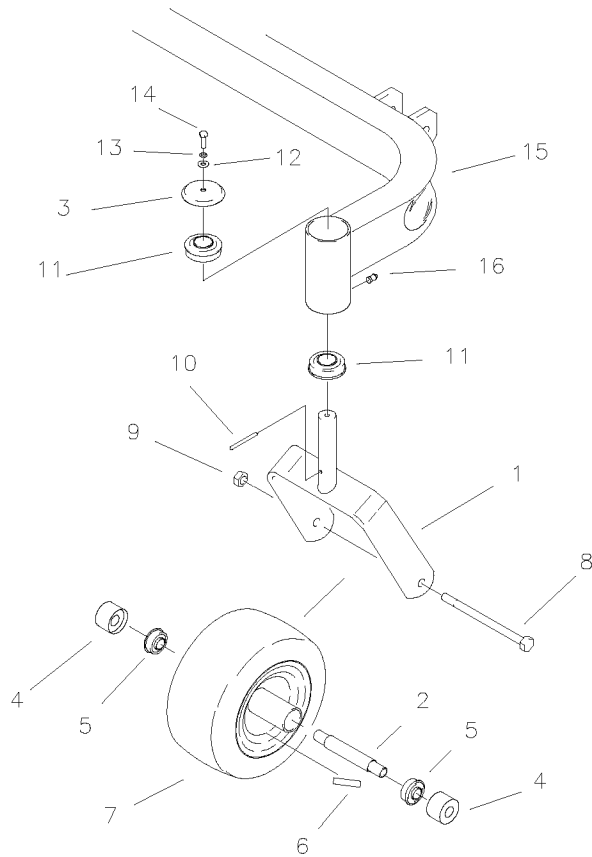
REF NO.	PART NO.	QTY.	DESCRIPTION	REF NO.	PART NO.	QTY.	DESCRIPTION
1	642-063P	2	DRAG BAR TAB	18	642-175P	2	ADJUSTABLE HANGER END
2	659-155P	4	DRAG LINK BAR	19	659-171A	1	RELEASE HANDLE ASSEMBLY
3	620-051P	1	LIFT BAR	20	659-140P	2	DECK HOOK
4	642-081P	2	LIFT SLEEVE, FRONT	21	659-148W	1	RELEASE HANDLE WELDMENT
5	642-082P	2	LIFT SLEEVE, REAR	22	659-145P	1	HOOK KEEPER
6	F-1879	1	5/16-18 X 1 1/4" GR.5	23	H-2547	1	SPRING, TORSION
7	F-1125	1	5/16-18 STOVER NUT	24	F-1005-03	1	NUT, 3/8-16, STOVER
8	659-056P	1	DECK LIFT PEDAL	25	F-1009-03	2	WASHER, FLAT, 3/8"
9	642-177P	4	HANGER PIN	26	F-2009	2	SPIROL ROLL PIN 1/4 X 1-1/2
10	F-1896	2	CLEVIS PIN, 1/2 X 1 3/4"	27	F-1073	1	CAPSCREW, 3/8-16 X 2, GR. 5
11	F-1489	4	NUT, 1/2" JAM	28	H-2401	1	TREAD PAD
12	F-1936	6	1/2-13 X 3 1/2, 2" THREAD	29	SEE PAGE 2-7	1	FRONT AXLE WELDMENT
13	F-1521	7	WASHER, 1/2 NARROW	30	659-146P	1	LATCH PLATE
14	H-2239	7	RUE RING, 1/2"	31	659-170P	1	PLATE, CATCH
15	F-1890	2	CLEVIS PIN, 1/2 X 3 1/2"	32	F-1158	2	NUT, 1/4" STOVER
16	F-1898	3	CLEVIS PIN, 1/2 X 2 3/4"	33	F-1823	2	CARRIAGE BOLT, 1/4-20 X 3/4"
17	F-1036-37	4	ROLL PIN, 5/16 DIA. X 1.750	34	F-1005-05	1	1/2" STOVER NUT

TRANSMISSION IDLERS & RELATED PARTS

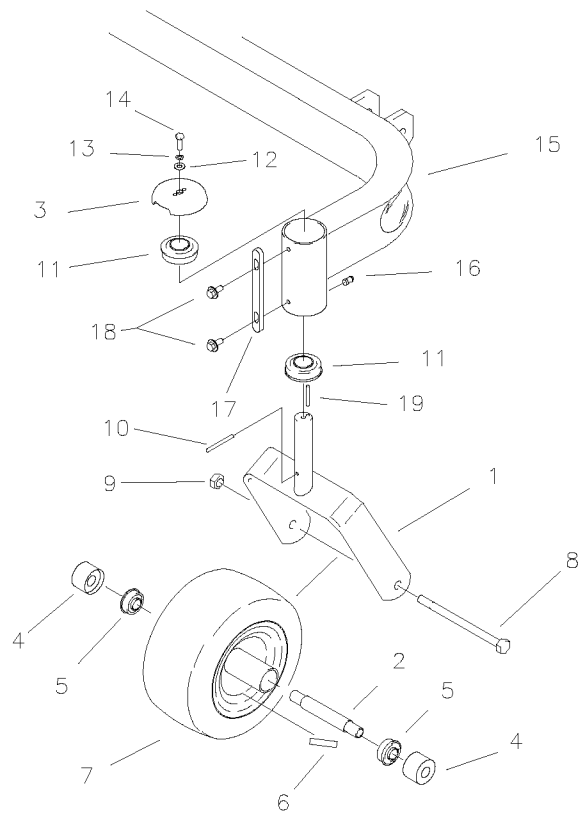


REF NO.	PART NO.	QTY.	DESCRIPTION
1	D-3338	2	4" FLAT IDLER PULLEY
2	F-1005-05	3	1/2-13 STOVER NUT
3	F-1668	1	1/2-13 X 2 3/4 BOLT GR. 5
4	F-1005-03	3	3/8-16 STOVER NUT
5	F-1009-03	1	3/8" FLAT WASHER
6	659-085P	1	MOUNTING PIN
7	663-017W	1	HYDRO IDLER ARM
8	F-1009-05	6	1/2" FLAT WASHER
9	H-2092	1	1 1/4 X 5" SPRING
10	H-1664	1	1/2-13 X 2 1/4" BOLT GR. 5
11	F-1073	1	3/8-16 X 2" BOLT GR. 5
12	609-034P	1	SPACER
13	F-1015-30	1	3/8-16 X 2 1/2" BOLT GR. 5
14	D-3730	2	BUSHING, 5/8" BORE

CASTER WHEEL ASSEMBLY



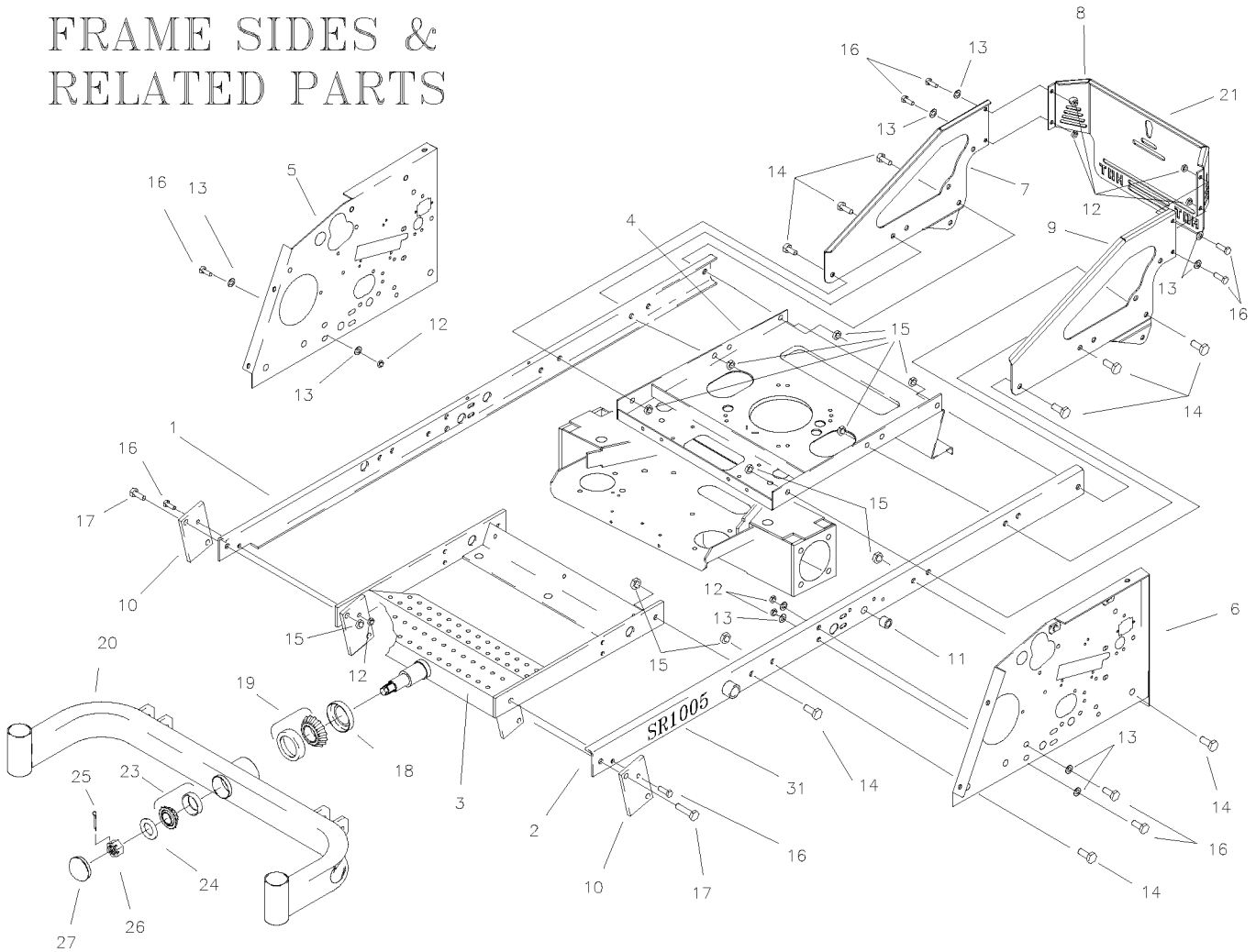
MODELS WITH SERIAL NO. BEFORE 663V1



MODELS WITH SERIAL NO. 663V1 AND AFTER

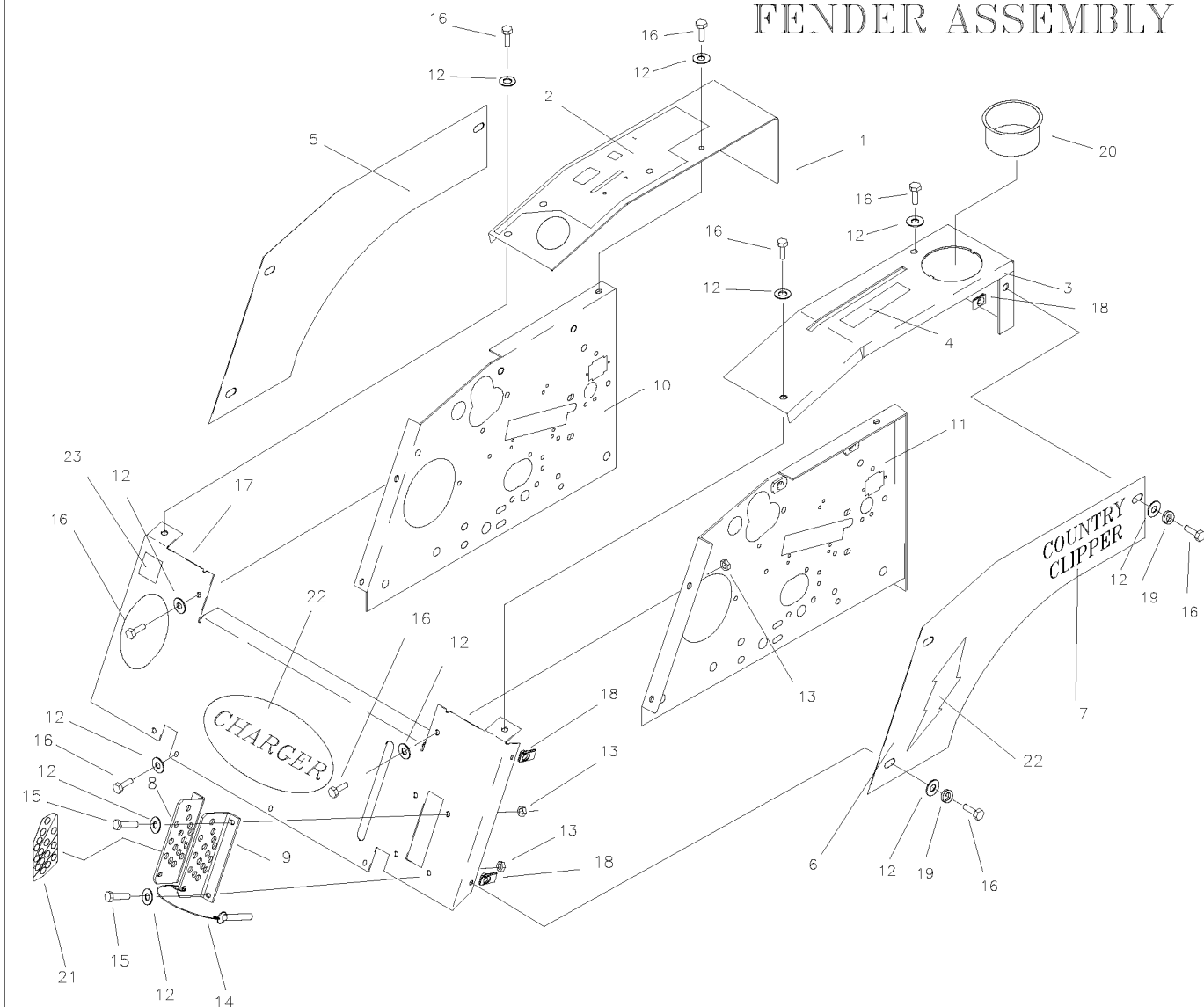
REF NO.	PART NO.	QTY.	DESCRIPTION
1	647-003W	2	CASTER WELDMENT (S/N BEFORE 663V1)
-	647-192W	2	CASTER WELDMENT (S/N 663V1 & AFTER)
2	647-038P	2	BEARING SPACER
3	636-133P	2	BEARING CAP, RED (S/N BEFORE 663V1)
-	636-176P	2	BEARING CAP, RED (S/N 663V1 & AFTER)
4	611-135P	4	BEARING SHIELD
5	D-3432	4	BEARING, 5/8 ID X 1 3/8 OD
6	P-11384	2	DECAL, 12 PSI
7	D-3670	2	FRONT TIRE/WHEEL
8	F-1908	2	1/2-13 X 6 1/2" GR. 5 BOLT
9	F-1005-05	2	1/2-13 LOCK NUT
10	F-1456	2	3/16 ROLL PIN
11	D-2008-02	4	BEARING, SPD SF-16-32
12	F-1009-01	2	1/4" FLAT WASHER
13	F-1019-01	2	1/4" LOCK WASHER
14	F-1810	2	1/4-20 X 3/4 W/NYLON PATCH
15	663-003W	1	FRONT AXLE WELDMENT (S/N BEFORE 663V1)
-	663-065W	1	FRONT AXLE WELDMENT (S/N 663V1 & AFTER)
16	H-1056	2	GREASE ZERK
17	659-185P	2	STOP TAB
18	F-2030	4	1/4" X 5/8" SELF TAPPING SCREW
19	F-1855	2	3/16" X 1" ROLL PIN

FRAME SIDES & RELATED PARTS



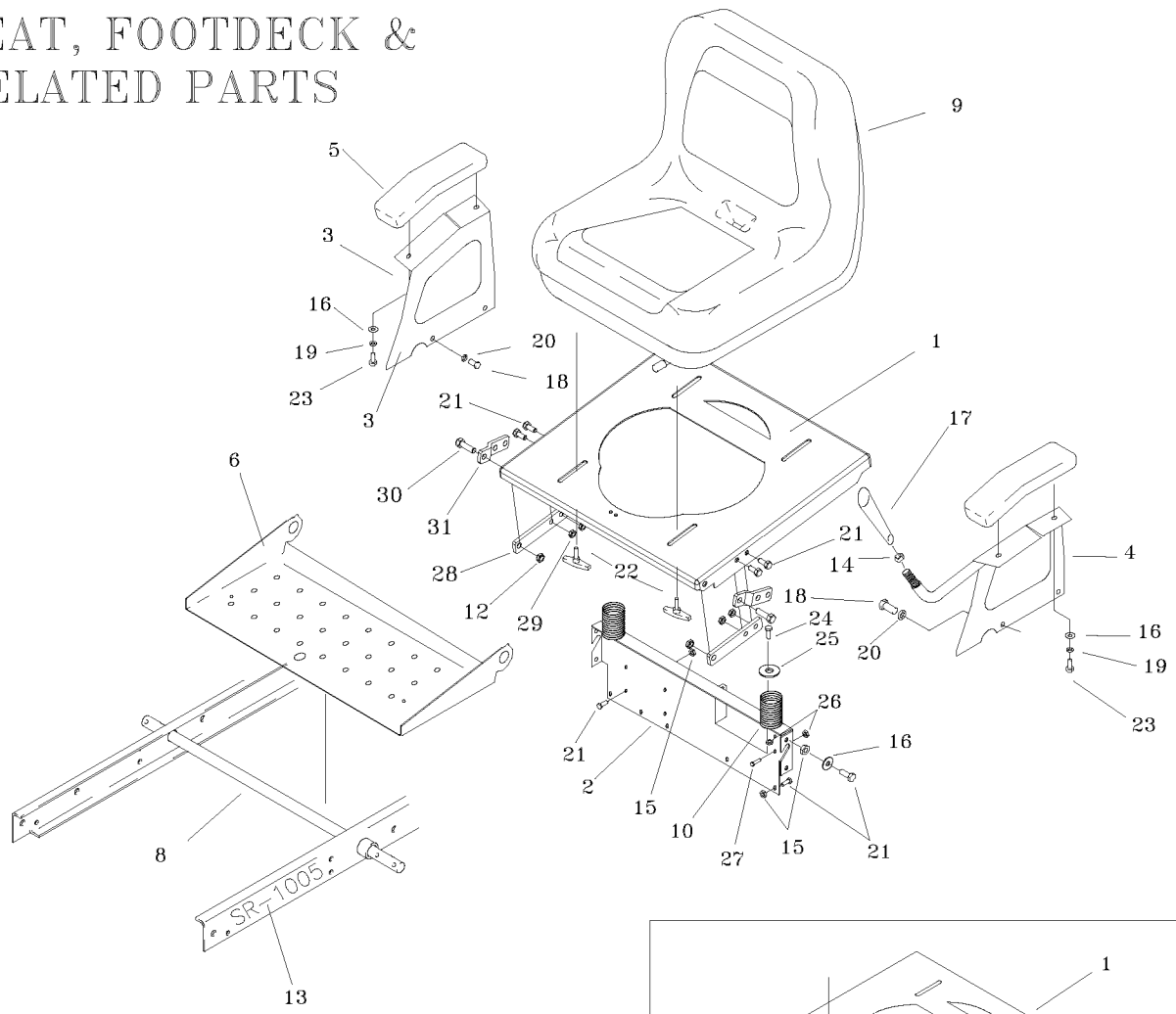
REF NO.	PART NO.	QTY.	DESCRIPTION	REF NO.	PART NO.	QTY.	DESCRIPTION
1	659-021W	1	FRAME SIDE RH.	15	F-1005-05	16	1/2-13 LOCK NUT
-	663-063A	1	FRAME SIDE RH., W/DECAL SR1005	16	F-1558	10	3/8-16 X 7/8" GR.5
2	659-022W	1	FRAME SIDE LH.	17	F-1293	2	1/2-13 X 2", GR.5
-	663-064A	1		18	D-3647	1	FRONT PIVOT SEAL
3	663-029W	1	AXLE MOUNTING WLDT.	19	D-3646	1	FRONT PIVOT TAPARED ROLLER BRG.
4	663-031W	1	MOTOR MOUNT WLDT.	20	SEE PAGE 2-7	1	FRONT AXLE WELDMENT
5	659-011P	1	SIDE PANEL RH.	21	P-12097	1	COLORLED DECAL, "COUNTRY CLIPPER"
6	659-012P	1	SIDE PANEL LH.	22	P-12188	2	DECAL, "SR1005", 07 MOWER
7	659-133P	1	RH ENGINE SIDE PANEL	23	D-3782	1	TAPARED ROLLER BRG.
8	647-123A	1	REAR PANEL GUARD W/ DECAL	24	606-303P	1	1" WASHER
9	659-134P	1	LH ENGINE SIDE PANEL	25	F-1728	1	3/16 X 2" COTTER PIN
10	642-063P	2	DRAG BAR TAB	26	F-1724	1	1-14 SLOTTED NUT
11	D-3730	2	BUSHING, 5/8 BORE(JOYSTICK)	27	H-1924	1	GREASE CAP
12	F-1005-03	10	3/8-16 STOVER NUT				
13	F-1009-03	16	3/8 FLAT WASHER				
14	F-1759	12	1/2-13 X 1" GR.5				

FENDER ASSEMBLY



REF NO.	PART NO.	QTY.	DESCRIPTION	REF NO.	PART NO.	QTY.	DESCRIPTION
1	663-060A	1	FENDER CAP RH W/DECAL	13	F-1125	8	5/16-18 LOCK NUT
-	663-061A	1	FENDER CAP, TWIN STK. RH W/DECAL	14	F-1807	1	1/2" X 2.4 CLEVIS PIN W/SASH
2	P-11626	1	DECAL, "CONTROL PANEL"	15	F-1879	4	5/16-18 X 1 1/4" GR. 5
3	663-041A	1	FENDER CAP LH. W/DECAL	16	F-1015-15	20	5/16-18 X 1" GR.5
-	663-042A	1	FENDER CAP, TWIN STK. LH. W/DECAL	17	663-043A	1	FRONT PANEL W/DECALS
4	P-11382	1	DECAL, PARK BRAKE	18	F-1860	8	5/16 U-NUT
5	663-053A	1	FENDER SKIRT RH W/DECALS	19	F-1019-02	8	5/16 LOCK WASHER
6	663-054A	1	FENDER SKIRT LH W/DECALS	20	644-028P	1	CUP HOLDER
7	P-12098	2	DECAL, COUNTRY CLIPPER, SMALL	21	P-12034	1	DECAL, "CUT HEIGHT"
8	647-097A	1	LATCH PLATE RH W/DECAL	22	P-11832	1	DECAL, "CHARGER"
9	647-095P	1	LATCH PLATE LH.	23	P-10939	1	DECAL, "CAUTION"
10	659-011P	1	SIDE PANEL RH.				
11	659-012P	1	SIDE PANEL LH.				
12	F-1009-02	20	5/16 FLAT WASHER				

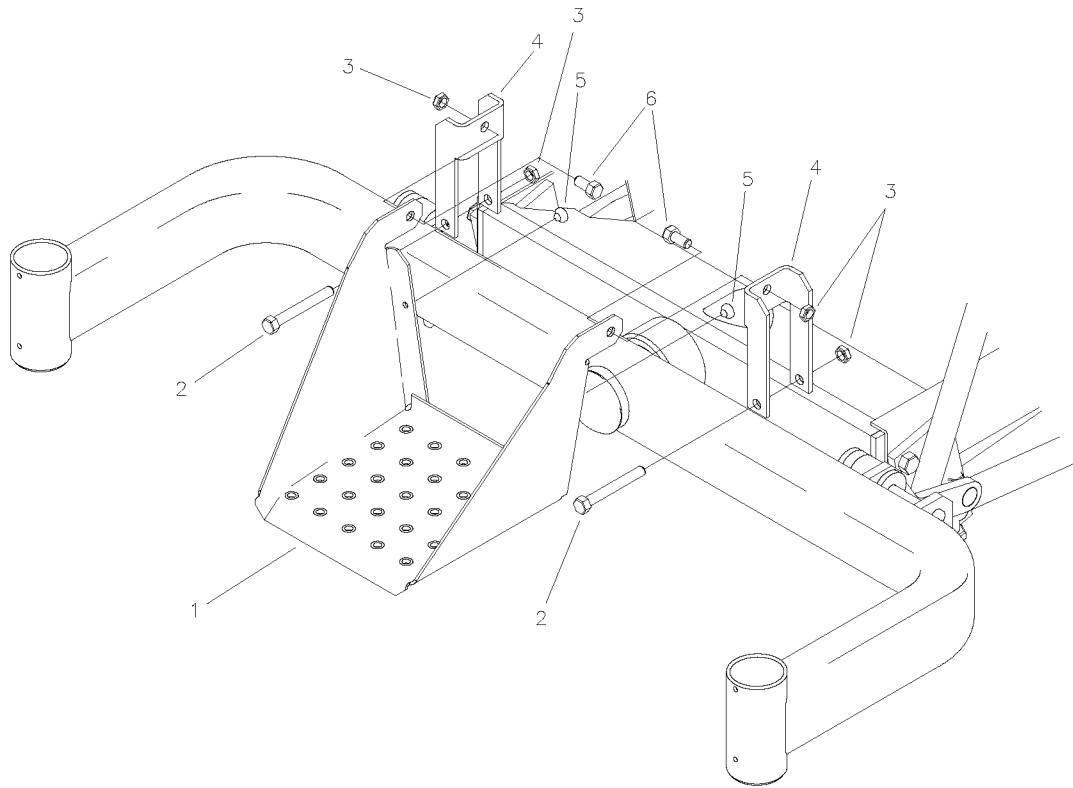
SEAT, FOOTDECK & RELATED PARTS



SEAT MOUNTING BASE BEFORE S/N 663V1

REF NO.	PART NO.	QTY.	DESCRIPTION	REF NO.	PART NO.	QTY.	DESCRIPTION
1	659-005P	1	SEAT MOUNTING BASE	17	H-2317	1	TAPERED HANDLE (JOYSTICK)
2	663-010P	1	REAR SEAT BRACE	18	F-1015-23	4	3/8-16 X 3/4" GR. 5
3	659-051P	1	ARM REST RH. (JOYSTICK)	19	F-1019-02	4	5/16 LOCK WASHER
-	636-163P	1	ARM REST, (TWIN STICK)	20	F-1019-03	4	3/8 LOCK WASHER
4	659-055W	1	ARM REST LH. (JOYSTICK)	21	F-1546	12	5/16-18 X 3/4" GR. 5
-	636-163P	1	ARM REST, (TWIN STICK)	22	659-073A	4	T-HANDLE ASSEMBLY
5	621-143A	2	ARM REST PAD	23	F-1015-15	4	5/16-18 X 1" GR. 5
6	659-006P	1	FOOT DECK	24	F-1538	3	1/4-20 X 3/4", GR.5
7	-----	-	-----	25	620-050P	3	1" HEAVY WASHER
8	620-051P	1	LIFT BAR	26	F-1158	5	1/4" STOVER NUT
9	H-2449	1	SEAT	27	F-1539	2	1/4-20 X 1 1/4", GR.5
10	H-1920	3	SEAT SPRING	28	659-175P	2	SEAT HINGE TAB
11	F-1015-27	2	3/8-16 X 1 1/2" GR. 5	29	F-1125	4	5/16-18 STOVER NUT
12	F-1005-03	4	3/8-16 LOCK NUT	30	F-1307	2	3/8-16 X 1-1/4 CAPSCREW
13	P-12188	2	DECAL, SR-1005	31	647-086P	2	FLIP SEAT MATING TAB
14	F-1486	1	3/8-16 JAM NUT				
15	F-1005-02	12	5/16-18 LOCK NUT				
16	F-1009-02	8	5/16 FLAT WASHER				

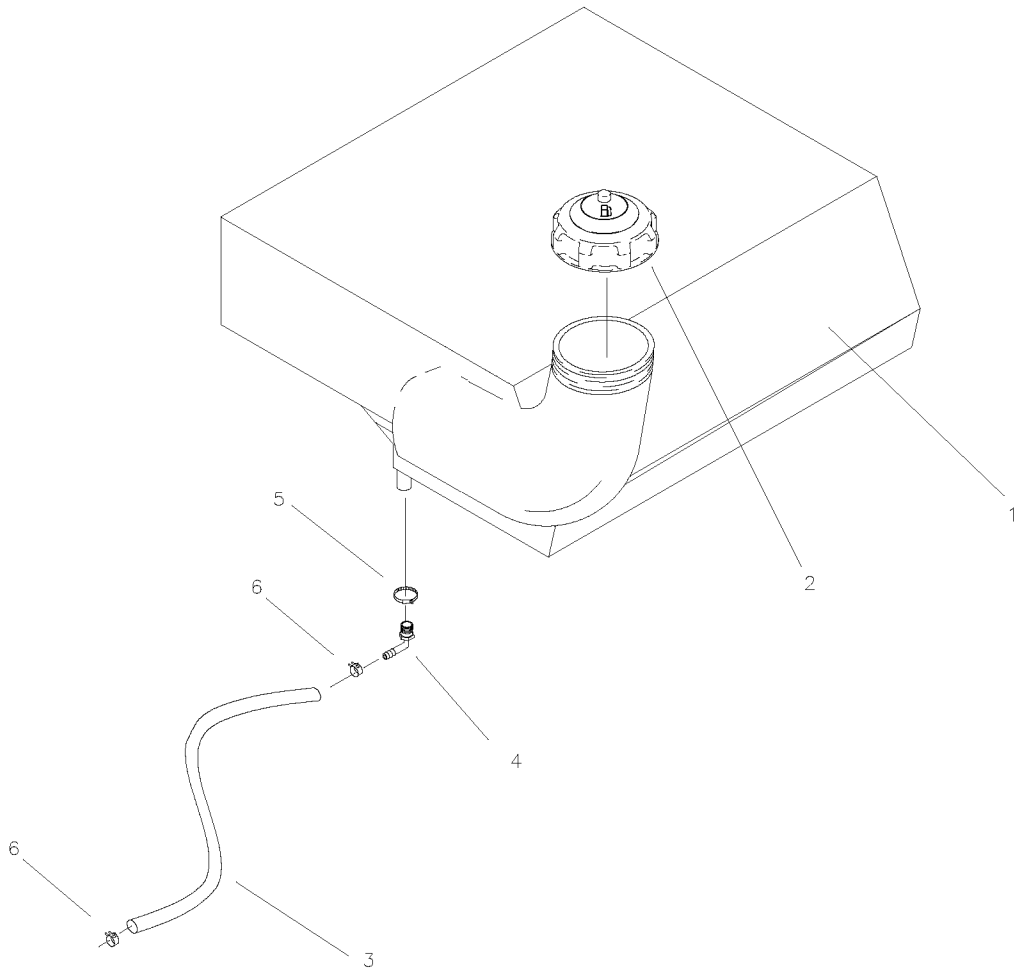
FRONT STEP ASSEMBLY



FRONT STEP ASSEMBLY IS FOR MODELS
WITH S/N 663V1 AND AFTER

REF NO.	PART NO.	QTY.	DESCRIPTION
1	647-133P	1	FRONT STEP
2	F-1537	2	3/8-16 X 3" HEX HEAD BOLT
3	F-1005-03	4	3/8-16 LOCK NUT
4	647-134P	2	FRONT STEP YOKE
5	H-2461	2	RUBBER BUMPER BUTTON
6	F-1015-23	2	3/8-16 X 3/4" HEX HEAD BOLT

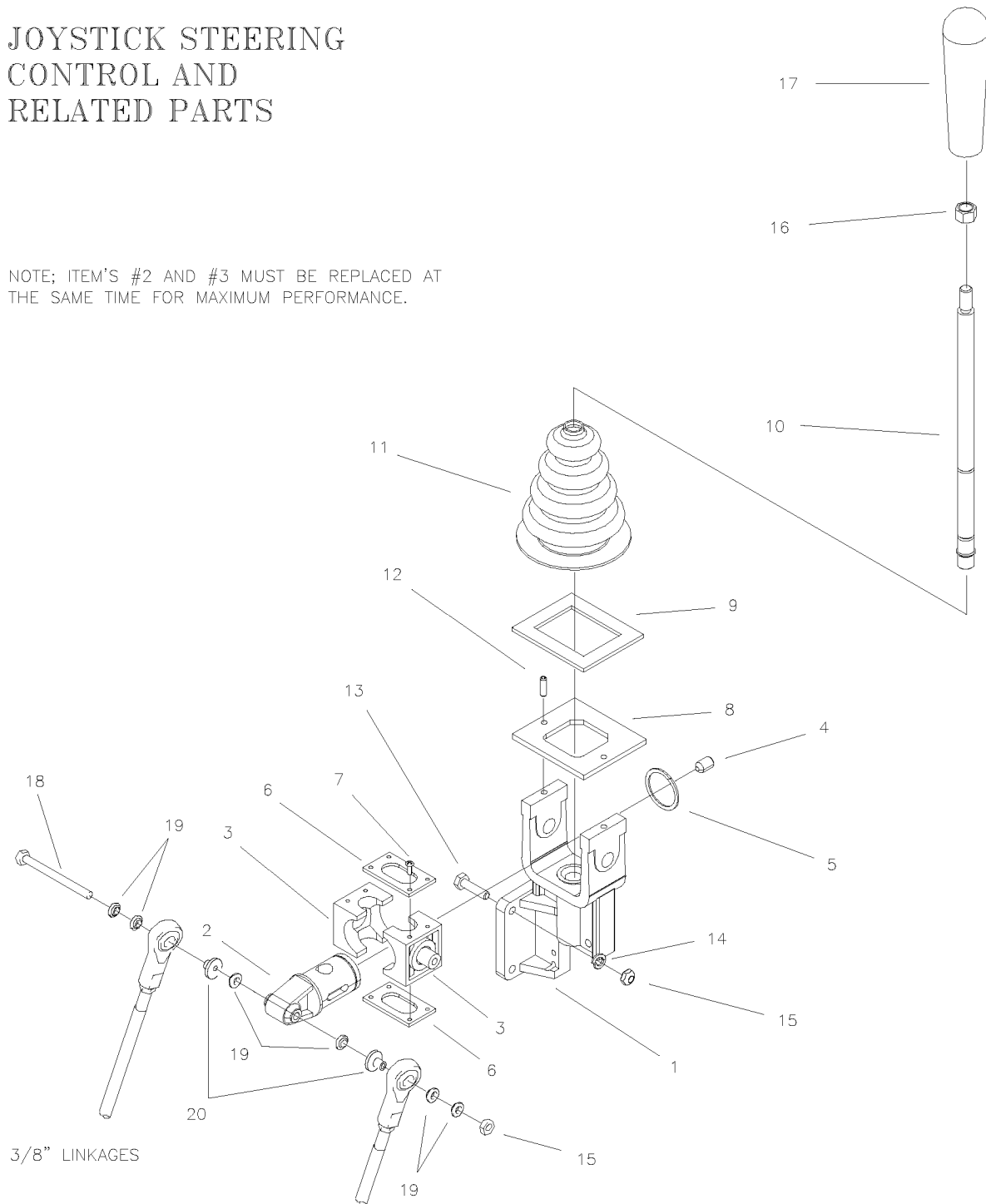
FUEL TANK ASSEMBLY



REF NO.	PART NO.	QTY.	DESCRIPTION
1	H-2450	1	8 GALLON TANK
2	H-2232	1	GAS CAP
3	644-034P	1	29 1/2" FUEL LINE
4	H-1646	1	HOSE BARB, 90 DEG.
5	H-1952	1	HOSE CLAMP
6	H-1687	2	HOSE CLAMP, 1/2"

JOYSTICK STEERING CONTROL AND RELATED PARTS

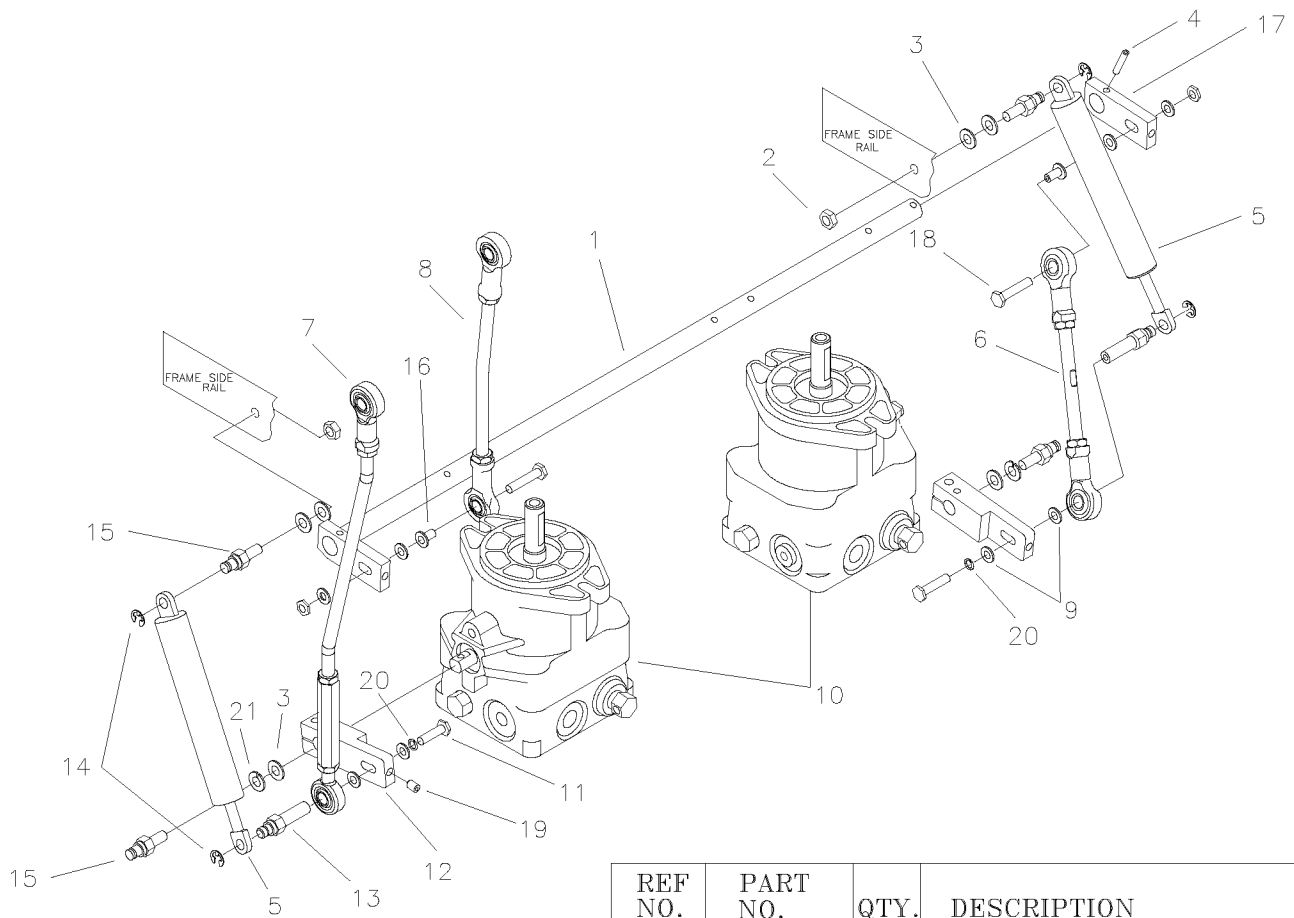
NOTE: ITEM'S #2 AND #3 MUST BE REPLACED AT THE SAME TIME FOR MAXIMUM PERFORMANCE.



3/8" LINKAGES

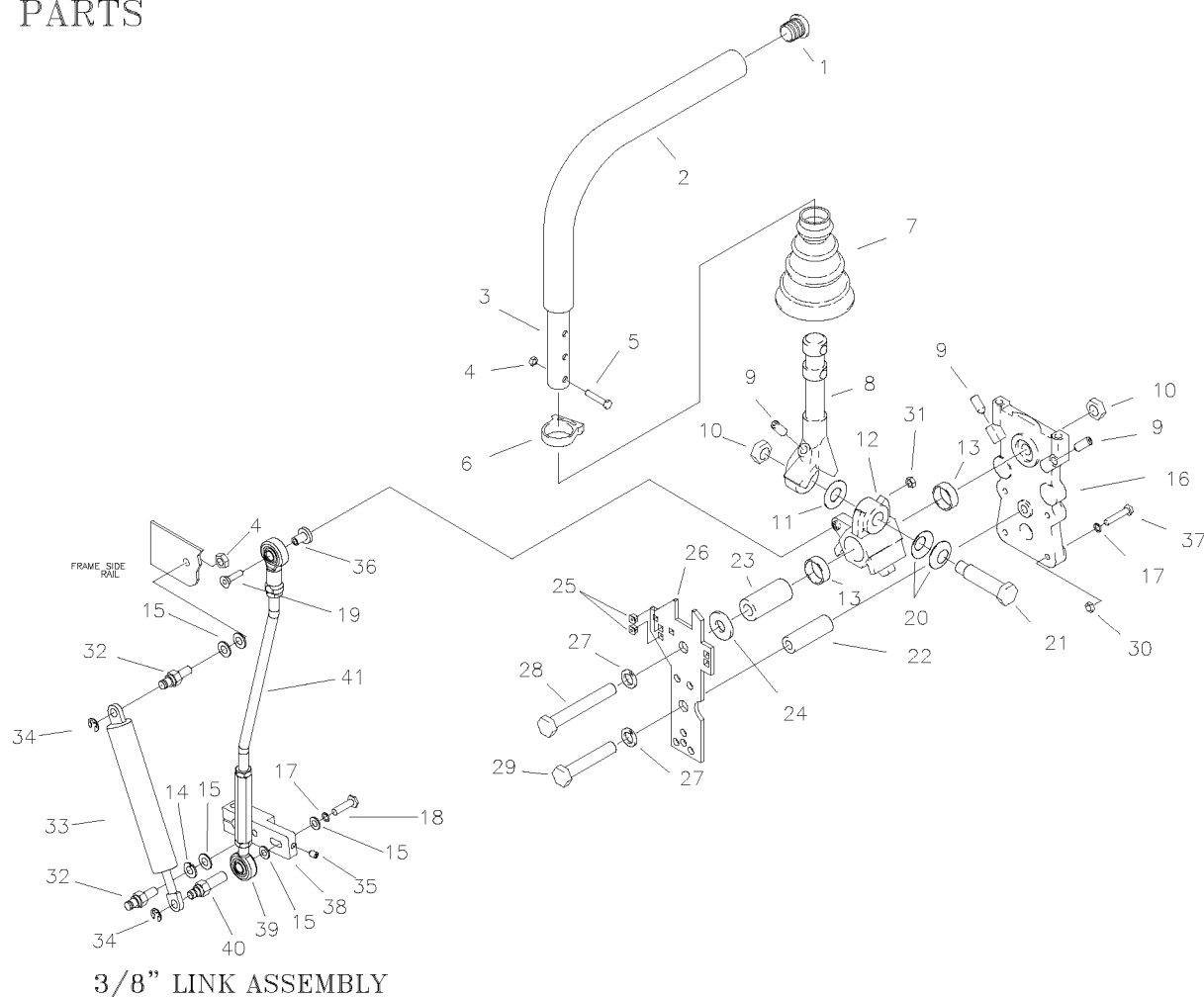
REF NO.	PART NO.	QTY.	DESCRIPTION	REF NO.	PART NO.	QTY.	DESCRIPTION
-	647-122A	1	JOYSTICK ASSEMBLY	11	H-1991	1	BOOT, BELLOWS
1	659-144P	1	JOYSTICK YOKE	12	F-1999	2	ROLL PIN, 3/16 X 5/8
2	H-1992	1	PIVOT SHAFT	13	F-1015-05	3	1/4-20 X 1" HHCS GR. 5
3	H-1993	2	PIVOT BLOCK	14	F-1019-01	3	1/4" LOCK WASHER
4	F-1120	1	BALL PLUNGER	15	F-1158	4	1/4-20 LOCK NUT
5	H-1997	1	SNAP RING, SPIRLOCK	16	F-1011-03	1	3/8-16 NUT, JAM
6	619-306P	2	PIVOT BLOCK PLATE	17	H-2317	1	GRIP, HANDLE
7	F-1624	8	#6-32 X 3/8" SCREW SLOT	18	F-1020-01	1	1/2-20 X 3-1/2" GR. 5
8	659-129P	1	JOYSTICK TOP PLATE	19	H-1989	6	BUSHING, BALL JOINT
9	H-1947	1	GASKET, FOAM	20	H-2465	2	1/4" SPACER
10	621-140A	1	JOYSTICK SHAFT ASSEMBLY				

JOYSTICK STEERING
CONTROL AND
RELATED PARTS
(continued)
(3/8" LINKAGES)



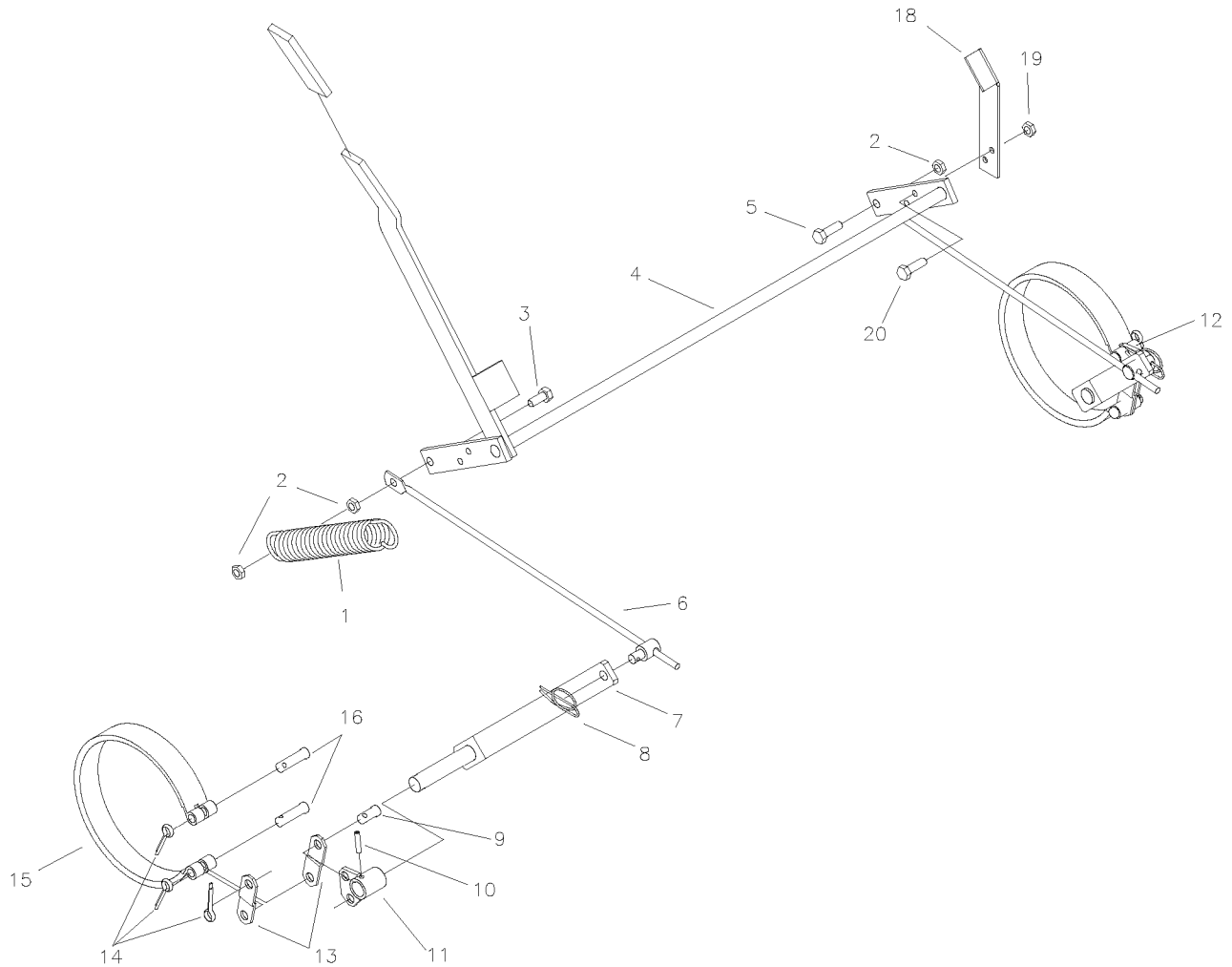
REF NO.	PART NO.	QTY.	DESCRIPTION
1	659-026P	1	HYDRO SHIFT ROD
2	F-1125	2	5/16" STOVER NUT
3	F-1009-02	6	5/16" FLAT WASHER
4	F-1503	2	3/16 X 1" ROLL PIN
5	H-2467	2	DUAL ACTION DAMPER, LITE DUTY
6	659-114P	1	LOWER LINKAGE
7	663-050P	1	STEERING LINKAGE ASSEMBLY
8	663-049P	1	STEERING LINKAGE ASSEMBLY
9	F-1009-01	8	1/4" FLAT WASHER
10	----	-	SEE PAGE 3-18
11	F-1015-05	2	1/4-20 X 1" BOLT GR 5
12	663-022P	2	SHIFT ARM
13	663-051P	2	DAMPNER BOLT, FEMALE
14	F-1610	4	E-RING
15	638-028P	4	5/16-18 X 3/4" DAMPNER BOLT
16	H-2465	2	1/4 X 5/16 SHOULDER WASHER
17	625-030P	2	SWIVEL ARM
18	F-1716	2	1/4-20 X 1-1/2" BOLT GR 5
19	F-1695	2	1/4-20 SETSCREW
20	F-1019-01	2	1/4" LOCK WASHER
21	F-1019-02	2	5/16" LOCK WASHER

RIGHT HAND STEERING CONTROL AND RELATED PARTS



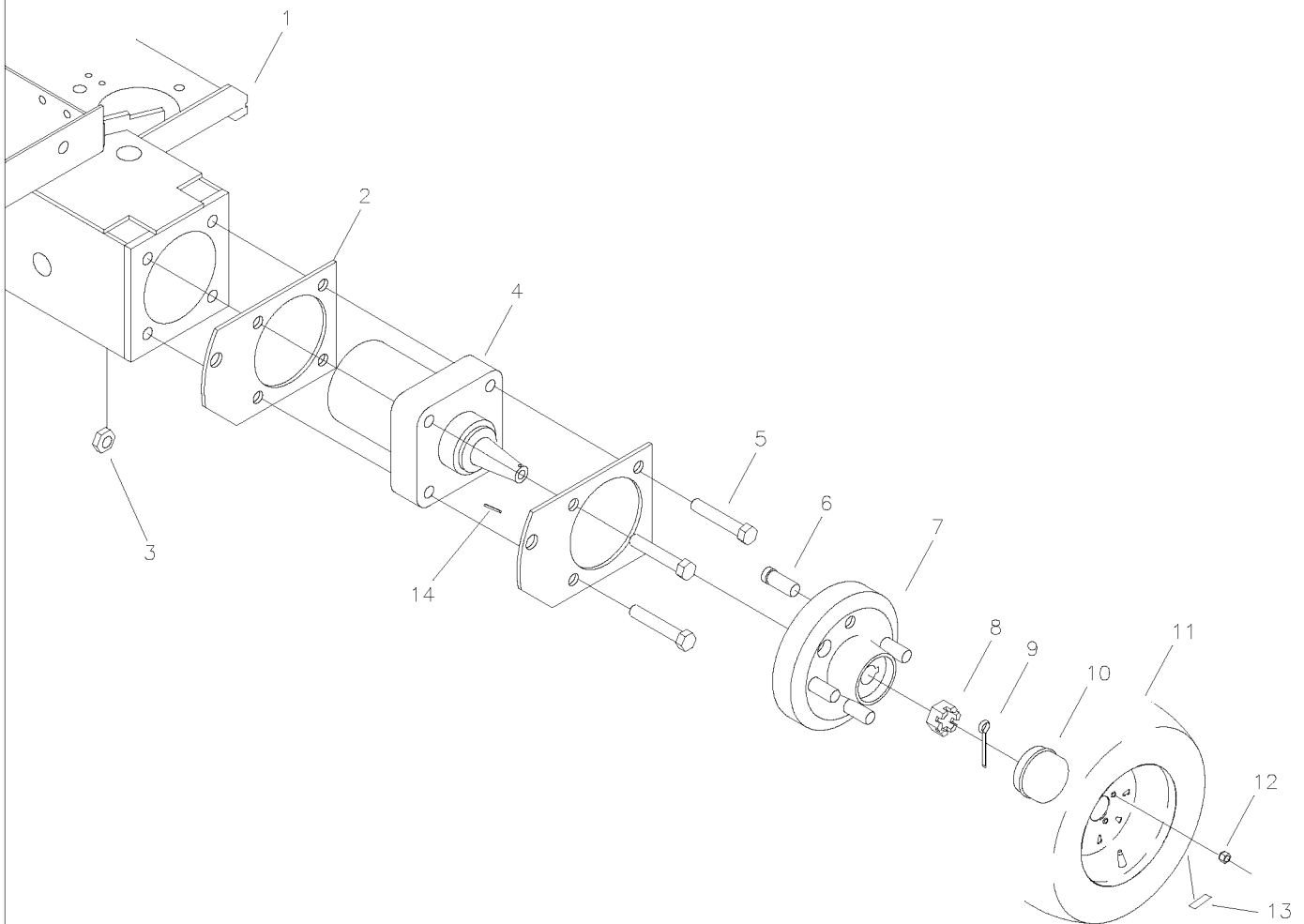
REF NO.	PART NO.	QTY.	DESCRIPTION	REF NO.	PART NO.	QTY.	DESCRIPTION
-	636-168A	1	RH DUAL LEVER ASSEMBLY	25	F-1995	2	GROMMET, NYLON
1	H-2080	1	END PLUG, 15/16" BLACK	26	636-167P	1	TOP PLATE, DUALEVER
2	H-2079	1	FOAM GRIP, 17"	27	F-1464	2	1/2" LOCK WASHER
3	642-004A	1	CONTROL LEVER ASSEMBLY	28	F-1828	1	1/2-13 X 3-1/2" HHCS GR. 5
4	F-1125	3	5/16 LOCK NUT	29	F-1439	1	1/2-13 X 3" HHCS GR. 5
5	F-1015-17	2	5/16-18 X 1-1/2" HHCS GR. 5	30	F-1158	3	1/4-20 LOCK NUT
6	H-2089	1	HOSE CLAMP	31	F-1748	1	1/4-20 THIN NYLOC NUT
7	H-2081	1	BOOT, TAPERED 1" CUFF	32	638-028P	2	DAMPER BOLT, 5/16-18 X 3/4"
8	625-063P	1	LEVER, DUALEVER	33	H-2168	1	STEERING DAMPER
9	F-1842	3	SETSCREW, 5/16-18 X 3/4"	34	F-1610	2	E-RING FOR 1/4" SHAFT
10	F-1489	2	1/2-13 JAM NUT	35	F-1695	1	1/4-20 SETSCREW
11	H-2116	1	WASHER, FIBER	36	H-2465	1	1/4 X 5/16" SHOULDER WASHER
12	638-033P	1	PIVOT BLOCK, DUALEVER	37	F-1539	3	1/4-20 X 1-1/4" HHCS GR. 5
13	D-3622	2	BEARING	38	663-022P	1	SHIFT ARM
14	F-1019-02	1	5/16" LOCK WASHER	39	H-1885	1	BALL JOINT W\1/4-28 THREAD
15	F-1009-02	5	WASHER, FLAT STD. 5/16"	40	663-051P	1	DAMPNER BOLT, FEMALE
16	638-034P	1	BASE DUALEVER	41	663-050P	1	LINK ROD ASSEMBLY
17	F-1019-01	4	1/4" LOCK WASHER				
18	F-1015-05	1	1/4-20 X 1" HHCS GR. 5				
19	F-1974	1	1/4-20 X 1-1/4" SOCK BOLT				
20	H-2115	2	WASHER, SPRING				
21	625-070P	1	SHOULDER BOLT, 5/8" OD				
22	625-067P	1	BUSHING, STAND OFF				
23	625-064P	1	BUSHING, PIVOT BLOCK				
24	625-072P	1	WASHER, FLAT				

PARKING BRAKE ASSEMBLY & RELATED PARTS



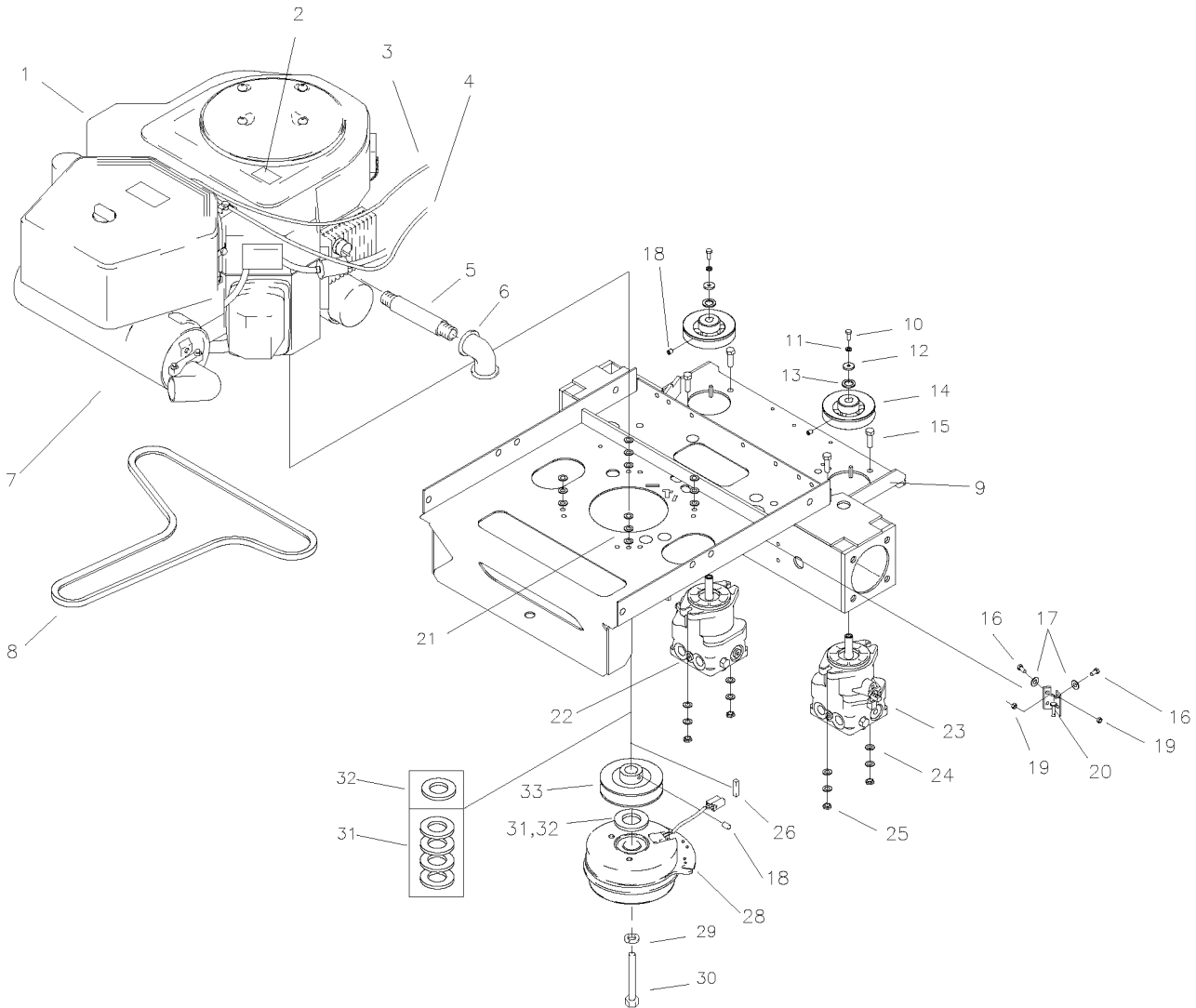
REF NO.	PART NO.	QTY.	DESCRIPTION
1	H-1635	1	3/4 X 4" SPRING
2	F-1125	3	5/16-18 STOVER NUT
3	F-1015-15	1	5/16-18 X 1" BOLT
4	663-024W	1	BRAKE ROD WLDT
5	F-1546	1	5/16-18 X 3/4" BOLT
6	H-2451	2	BRAKE LINK ROD ASSEMBLY
7	647-013W	2	BRAKE ARM WLDT
8	F-1492	2	5/16 X 3/8" RUE RING
9	F-1438	2	3/8 X 3/4" CLEVIS PIN
10	F-1553	2	5/16 X 7/8" ROLL PIN
11	647-029W	1	SHORT BRAKE ARM (LH)
12	647-028W	1	SHORT BRAKE ARM (RH)
13	647-010P	4	BRAKE ANCHOR LINK
14	F-1491	6	1/8 X 1" COTTER PIN
15	D-3668	2	BRAKE BAND 6" X 1" WIDE
16	F-1444	4	3/8 X 1 5/16" CLEVIS PIN
17	H-1926	1	GRIP HANDLE
18	663-062P	1	BRAKE SWITCH STOP
19	F-1158	2	1/4-20 STOVER NUT
20	F-1015-05	2	1/4-20 X 5/8 BOLT

GEAR MOTOR, WHEEL ASSEMBLY



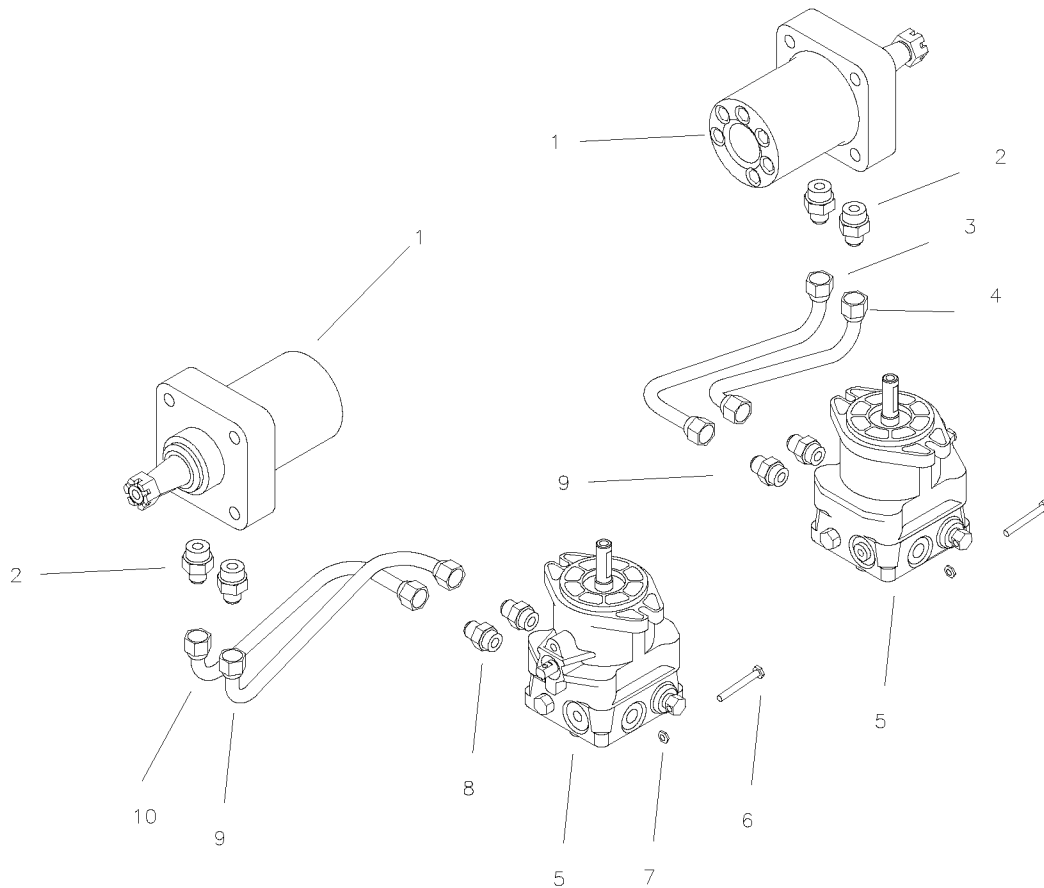
REF NO.	PART NO.	QTY.	DESCRIPTION
1	663-031W	1	MOTOR MOUNT
2	647-017P	4	BRAKE MOUNT
3	F-1005-05	8	1/2-13 STOVER NUT
4	D-3667	2	WHEEL MOTOR PARKER "TE" SERIES
5	F-1668	8	1/2-13 X 2 3/4" BOLT GR. 5
6	F-1654	8	WHEEL STUD (REPLACEMENT)
7	647-041P	2	WHEEL HUB
8	F-1909	2	3/4-16 CASTLE NUT
9	F-1396	2	1/8 X 1 1/2" COTTER PIN
10	H-1798	1	GREASE CAP
11	D-3637	2	TIRE/WHEEL ASSEMBLY ON 48" & 52" DECKS
-	D-3669	2	TIRE/WHEEL ASSEMBLY ON 60" DECKS
12	F-1499	8	LUG NUT 1/2-20 X 60 DEG.
13	P-11384	1	DECAL, 12 PSI
14	D-1004-01	2	1/4 X 1" KEY

MOTOR ASSEMBLY & RELATED PARTS



REF NO.	PART NO.	QTY.	DESCRIPTION	REF NO.	PART NO.	QTY.	DESCRIPTION
1	M-5330	1	19 HP. KAWASAKI ENGINE	15	F-1307	4	3/8-16 X 1 1/4" BOLT GR. 5
-	M-5342	1	20 HP. KOHLER ENGINE	16	F-1015-02	2	1/4-20 X 5/8" BOLT GR. 5
-	M-5325	1	23 HP. KOHLER ENGINE	17	F-1009-01	2	1/4" FLAT WASHER
-	M-5327	1	25 HP. KAWASAKI ENGINE	18	F-1228	2	1/4-20 NYLOC SETSCREW
-	M-5335	1	27 HP. KOHLER ENGINE	19	F-1158	2	1/4-20 STOVER NUT
-	M-5353	1	30 HP. KOHLER ENGINE	20	659-015W	1	CLUTCH STOP WELDMENT
2	P-10077	1	DECAL, "CLEAN"	21	606-348P	12	10 GA. WASHER (25 HP KAW.)
3	H-2235	1	CHOKE CABLE	22	D-3770-01	1	HYDRO PUMP (LH)
-	H-2404	1	CHOKE CABLE(23, 25, 27,& 30HP KOHLER)	23	D-3770-02	1	HYDRO PUMP (RH)
4	H-2236	1	THROTTLE CABLE	24	F-1009-03	8	3/8" FLAT WASHER
5	H-1082	1	PIPE, 3/8 X 3" (KOHLER)	25	F-1005-03	4	3/8-16 STOVER NUT
-	H-1451	1	PIPE, 3/8 X 2 1/2" (KOHLER)	26	621-113P	1	KEY, 1/4" SQ. X 1 1/4"
6	H-1218	1	ELBOW, 3/8 X 90 DEG. (KOHLER)	28	E-6317	1	1" CLUTCH BRAKE, 19 HP. & 20 HP ENG.
7	H-2284	1	MUFFLER ASSEMBLY (KAWASAKI)	-	E-6247	1	1 1/8" CLUTCH BRAKE, 23HP, 25HP & 27HP
8	D-3769	1	V-BELT A-67 KEVLAR	-	E-6338	1	1 1/8" CLUTCH BRAKE, 30HP
9	663-031W	1	MOTOR MOUNT	29	F-1019-04	1	7/16 LOCK WASHER
10	F-1737	2	6mm X 16mm BOLT GR. 5	30	F-1904	1	7/16-20 X 2 1/2" BOLT GR. 5
11	F-1738	2	6mm SPRING WASHER	31	611-143P	5	1 1/8" 10 GA. WASHER (25 KAW.)
12	F-1736	2	WASHER, .840 X .246 X .125	32	606-303P	2	1" 10 GA. WASHER (19 HP. & 20 HP.)
13	663-046P	2	WASHER, SPACER	33	D-3726	1	MOTOR PULLEY, 3.75 (19 HP & 20 HP)
14	647-035P	2	HYDRO PUMP PULLEY	-	647-036P	1	MOTOR PULLEY, (23 HP AND HIGHER)

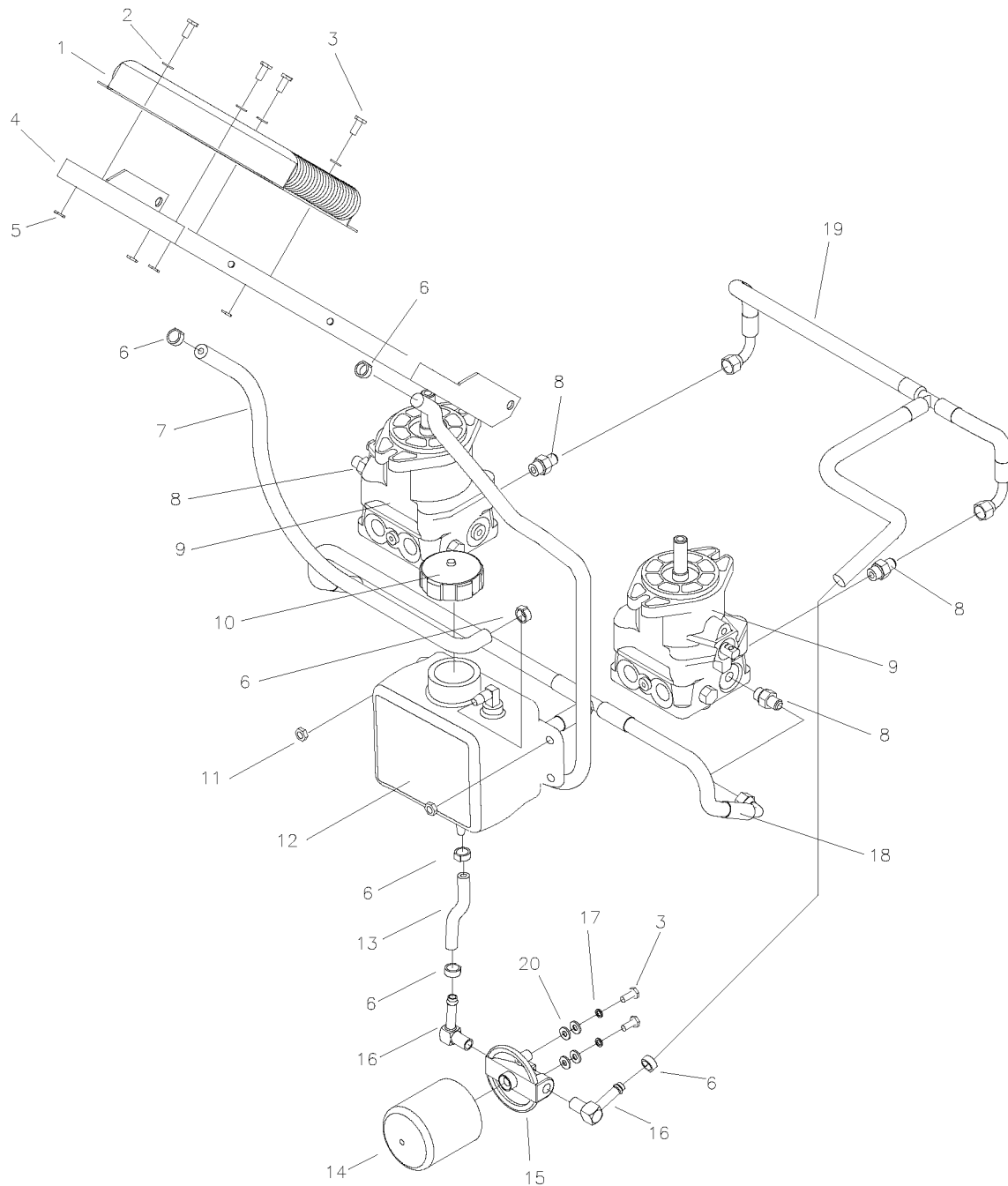
HIGH PRESSURE LINES & FITTINGS



VIEDED FROM FRONT RIGHT

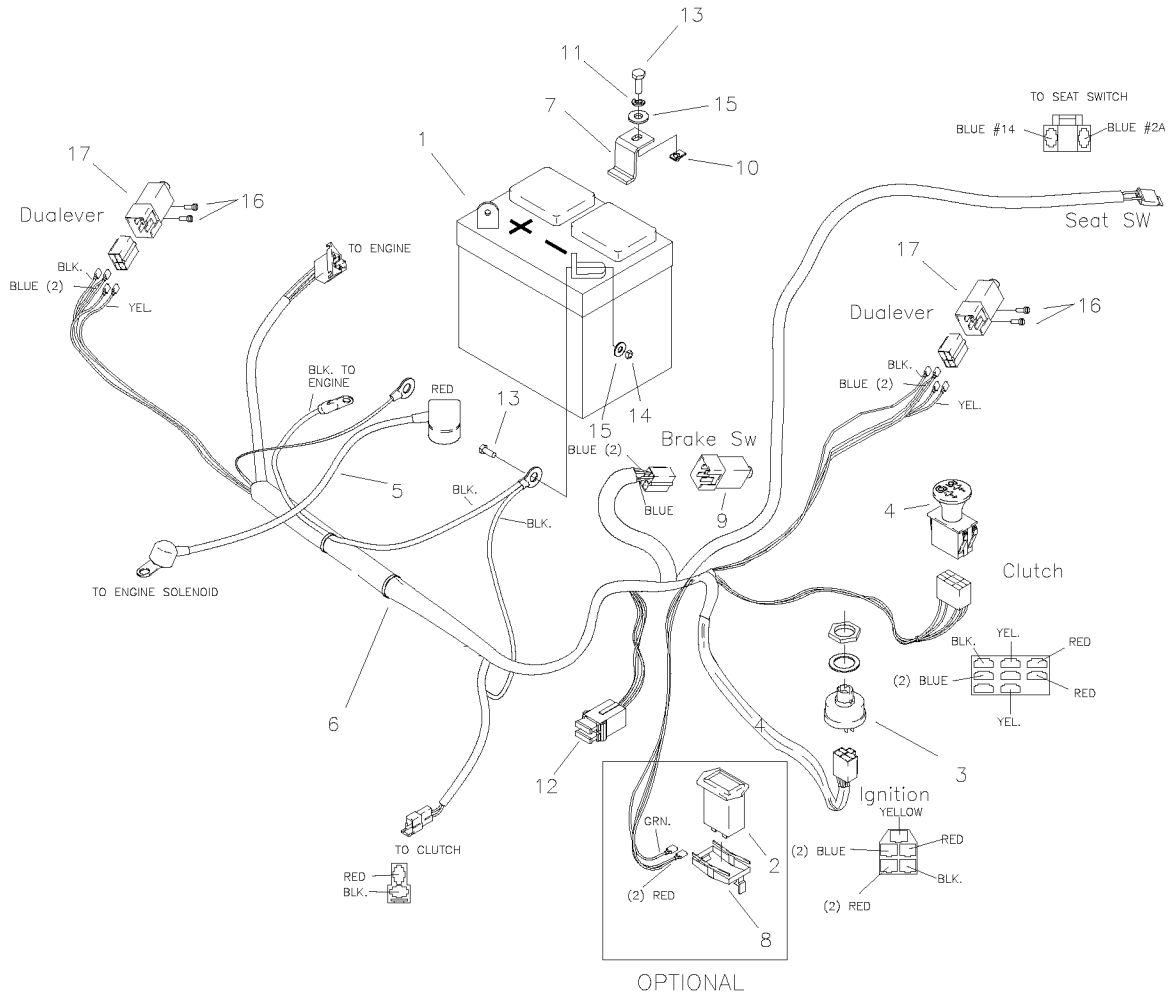
REF NO.	PART NO.	QTY.	DESCRIPTION
1	D-3667	2	WHEEL MOTOR PARKER "TE" SERIES
2	H-2319	4	FITTING, STRIGHT, 7/8-14
3	H-2443	1	TUBE ASS'Y, LH. FORWARD
4	H-2444	1	TUBE ASS'Y, LH. REVERSE
5	-----	-	SEE PAGE 3-19
6	F-1015-09	2	1/4-20 X 2" BOLT GR. 5
7	F-1158	2	1/4-20 STOVER NUT
8	H-2436	4	FITTING, STRAIGHT, 3/4" X 1/2"
9	H-2442	1	TUBE ASS'Y, RH. REVERSE
10	H-2441	1	TUBE ASS'Y, RH. FOWARD

OIL RETURN LINES & COOLER ASSEMBLY



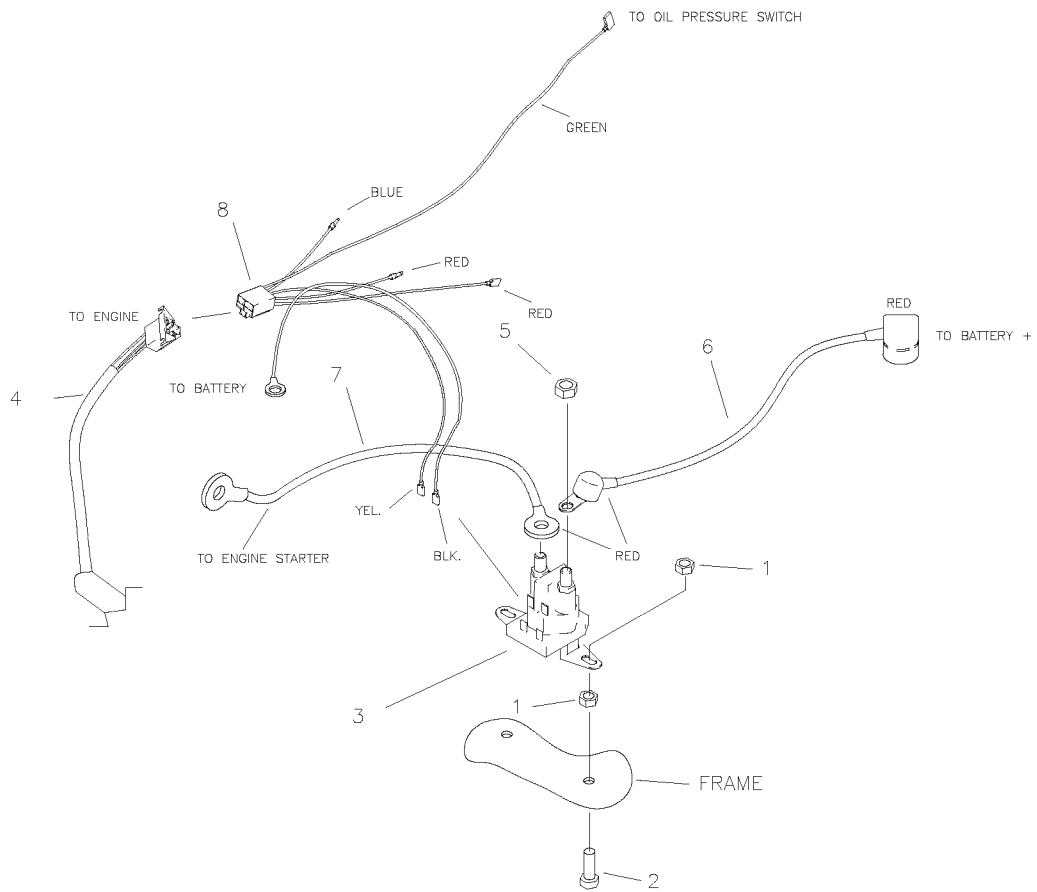
REF NO.	PART NO.	QTY.	DESCRIPTION	REF NO.	PART NO.	QTY.	DESCRIPTION
1	H-2325	1	OIL COOLER	11	F-1125	2	5/16-18 STOVER NUT
2	F-1009-01	4	1/4" WASHER	12	H-2447	1	OIL TANK
3	F-1015-03	6	1/4-20 X 3/4" BOLT GR. 5	13	H-2437	1	4 1/4" HOSE, 3/8 id. HI TEMP.
4	647-046W	1	OIL COOLER BRACKET	14	H-2026	1	OIL FILTER
5	F-1158	4	1/4-20 STOVER NUT	15	H-2061	1	FILTER BASE
6	H-2282	6	HOSE CLAMP	16	H-1859	2	HOSE BARB 90 DEG. ELBOW
7	H-2438	1	24" HOSE, 3/8" ID. HI TEMP.	17	F-1019-01	2	1/4" LOCK WASHER
8	H-2330	4	9/16" ADAPTER	18	H-2440	1	RETURN HOSE TEE ASSEMBLY
9	-----	-	SEE PAGE 3-19	19	H-2439	1	SUCTION HOSE TEE ASSEMBLY
10	H-2120	1	VENT CAP	20	F-1009-01	4	1/4" FLAT WASHER

E-6416 WIRE HARNESS & RELATED PARTS



REF NO.	PART NO.	QTY.	DESCRIPTION
1	E-5812	1	BATTERY
2	E-5878	1	HOUR METER
3	E-5873	1	START SWITCH
4	E-6403	1	CLUTCH SWITCH
5	E-6418	1	CABLE, BATTERY TO SOLENOID
6	E-6405	1	WIRE HARNESS
7	661-092P	1	BATTERY HOLD DOWN
8	E-6369	1	RETAINER CLIP
9	E-6297	3	BRAKE SWITCH
10	F-1858	1	1/4-20 U-NUT
11	F-1019-01	1	1/4" LOCK WASHER
12	E-6207	2	FUSE, #ATC-30
13	F-1538	3	1/4-20 X 3/4" GR. 5
14	F-1158	2	1/4-20 LOCK NUT
15	F-1009-01	5	1/4" FLAT WASHER
16	F-1994	4	#10 SCREW, 5/8" LONG
17	647-112A	2	SWITCH ARM ASSEMBLY
	E-6281	1	COVER (KEY SWITCH) -NOT SHOWN-

E-6417 KAWASAKI ADAPTER HARNESS & RELATED PARTS



REF NO.	PART NO.	QTY.	DESCRIPTION
1	F-1158	4	1/4-20 LOCK NUT
2	F-1015-05	2	1/4-20 X 1" GR. 5
3	E-6054	1	SOLENOID
4	E-6415 or E-6416	1	KOHLER WIRE HARNESS (JOYSTICK) KOHLER WIRE HARNESS (TWINSTICK)
5	F-1011-01	2	1/4-20 NUT
6	E-6418	1	CABLE, BATTERY TO SOLENOID
7	E-6419	1	CABLE, SOLENOID TO ENGINE
8	E-6417	1	KAWASAKI HARNESS ADAPTER