

REPAIR PARTS MANUAL  
FOR  
**COUNTRY  
CLIPPER<sup>®</sup>**



SR1000

SR1005



# COUNTRY CLIPPER "CHARGER" ZERO TURN RADIUS MOWER TABLE OF CONTENTS

## PAGE.... CONTENTS

### SECTION 1 – MOWER DECKS AND RELATED PARTS

- 1-1.... SINGLE IDLER DECK ASSEMBLY
- 1-2.... DOUBLE IDLER DECK ASSEMBLY
- 1-3.... DECK SPINDLE ASSEMBLY
- 1-4.... SINGLE IDLER DRIVE BELT IDLER & RELATED PARTS
- 1-5.... DOUBLE IDLER DRIVE BELT IDLER & RELATED PARTS
- 1-6.... LIFT HANDLE ASSEMBLY & RELATED PARTS
- 1-7.... LIFT ASSEMBLY & RELATED PARTS
- 1-8.... TRANSMISSION IDLERS & RELATED PARTS

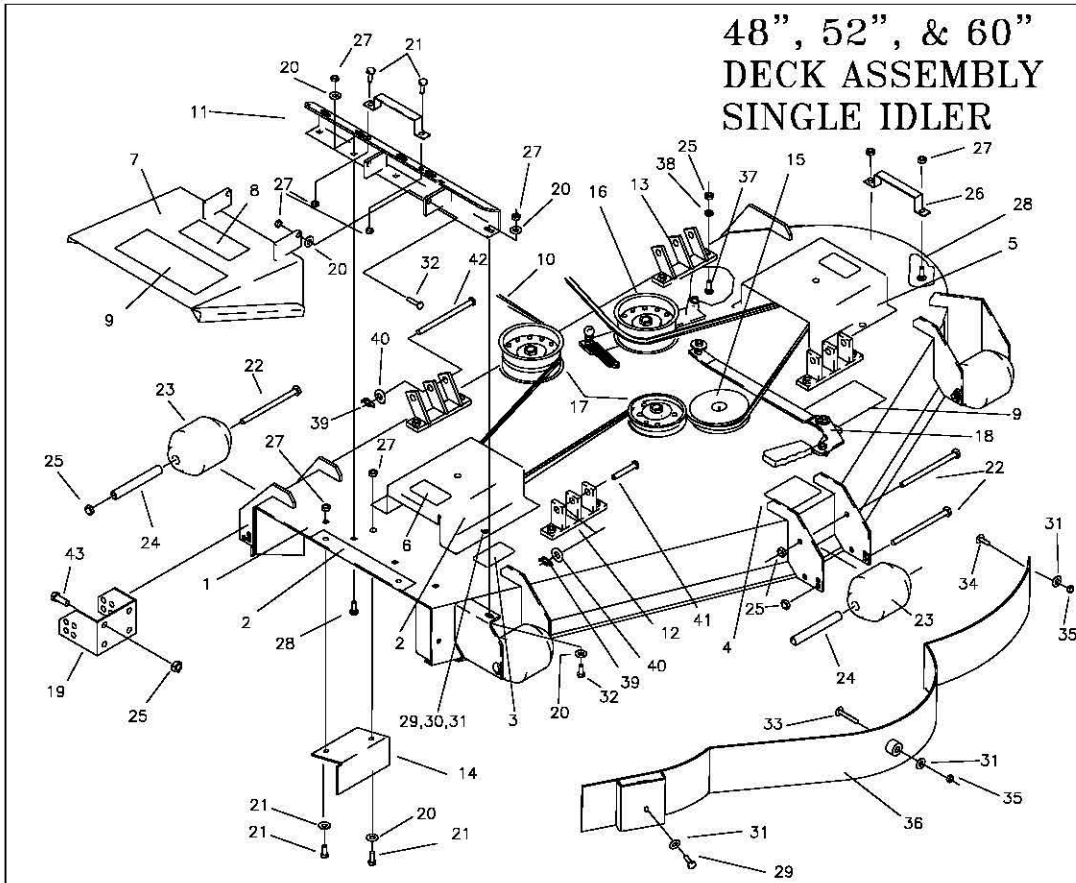
### SECTION 2 –TRACTOR FRAME AND RELATED PARTS

- 2-9....CASTER WHEEL ASSEMBLY
- 2-10...FRAME SIDES & RELATED PARTS
- 2-11...FENDER ASSEMBLY
- 2-12...SEAT, FOOT DECK & RELATED PARTS

### SECTION 3 –TRACTOR DRIVE AND RELATED PARTS

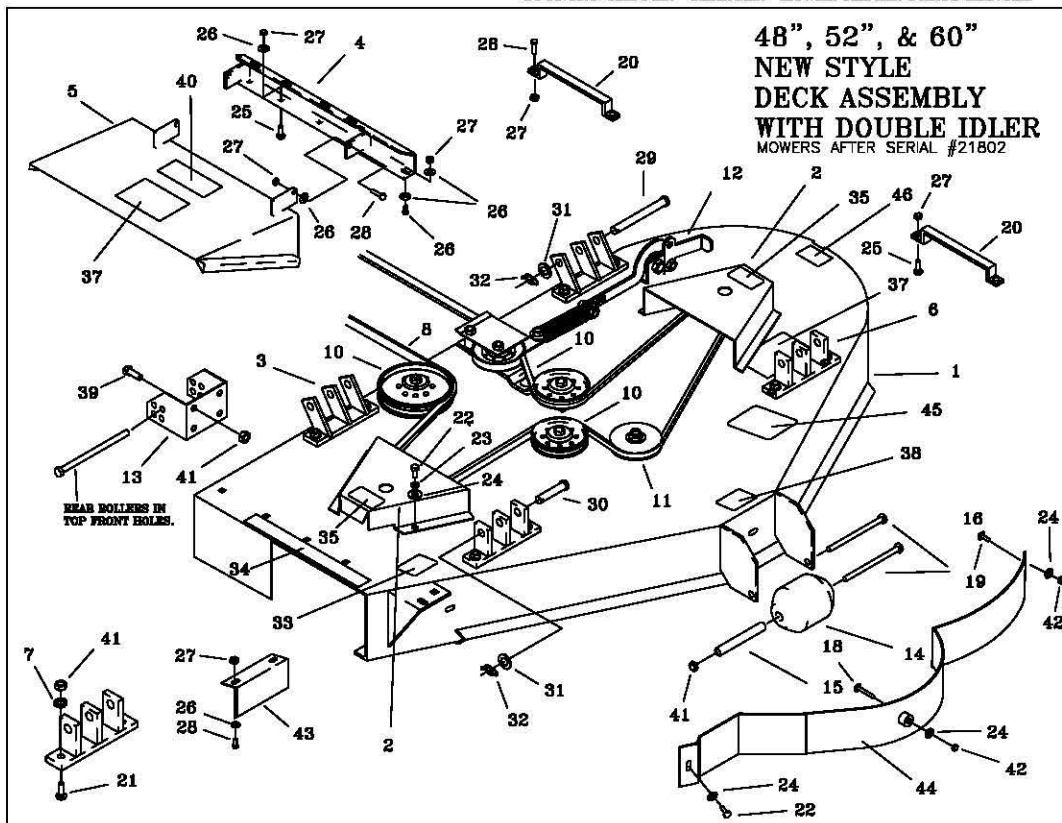
- 3-13...FUEL TANK ASSEMBLY
- 3-14...JOYSTICK STEERING CONTROL & RELATED PARTS
- 3-15...JOYSTICK STEERING CONTROL & RELATED PARTS (continued) (1/4" LINKAGE)
- 3-16...JOYSTICK STEERING CONTROL & RELATED PARTS (continued) (3/8" LINKAGE)
- 3-17...RIGHT HAND STEERING CONTROL (TWIN STICK)
- 3-18...LEFT HAND STEERING CONTROL (TWIN STICK)
- 3-19...PARKING BRAKE ASSEMBLY & RELATED PARTS
- 3-20...GEAR MOTOR WHEEL ASSEMBLY
- 3-21...MOTOR ASSEMBLY & RELATED PARTS
- 3-22...HIGH PRESSURE LINES & FITTINGS
- 3-23...OIL RETURN LINES & COOLER ASSEMBLY
- 3-24...WIRE HARNESS & RELATED PARTS

## 48", 52", & 60" DECK ASSEMBLY SINGLE IDLER



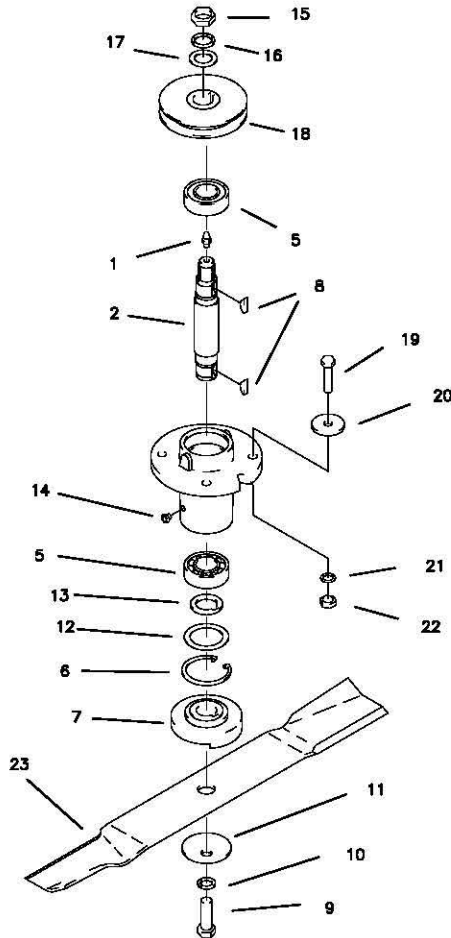
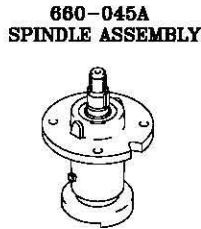
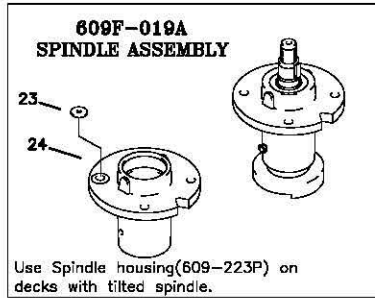
REF NO.	PART NO.	QTY.	DESCRIPTION	REF NO.	PART NO.	QTY.	DESCRIPTION
1	668-007A	1	48" DECK, W/DECALS	17	-----	1	BELT IDLER (SEE PG. 1-3)
	668-008A	1	52" DECK, W/DECALS	18	-----	1	BELT TIGHTENER (SEE PG. 1-3)
	668-009A	1	60" DECK, W/DECALS	19	609-182P	2-3	SCALPER BRACKET, (52" & 60")
2	P-10122	1	DECAL, "MISSING CHUTE"	20	F-1009-01	9	5/16" FLAT WASHER
3	P-10947	1	DECAL, "GREASE SPINDLE"	21	F-1546	4	5/16-18 X 3/4" BOLT GR. 5
4	P-11413	1	DECAL, "HOIST POINT"	22	F-1741	6-7	3/8-16 X 6" BOLT GR. 5,
5	660-023A	1	48" RH PULLEY COVER, W/DECAL	23	H-1948	6	ROLLER, 3 3/4"DIA. X 4 13/16
	643-034A	1	52" RH PULLEY COVER, W/DECAL	24	609-183P	6	WHEEL BUSHING
	643-037A	1	60" RH PULLEY COVER, W/DECAL	25	F-1005-03	15-27	3/8-16 STOVER NUT
	643-035A	1	48" LH PULLEY COVER, W/DECAL	26	649-035P	2	DECK HANDLE
	643-035A	1	52" LH PULLEY COVER, W/DECAL	27	F-1125	13	5/16-18 STOVER NUT
	643-038A	1	60" LH PULLEY COVER, W/DECAL	28	F-1671	3	CARRIAGE BOLT 5/16 X 3/4"
6	P-10935	2	DECAL, "ROTATING...."	29	F-1538	4-5	1/4-20 X 3/4 BOLT GR. 5
7	668-010A	1	48" DECK CHUTE W/DECALS	30	F-1019-01	4	1/4" LOCKWASHER
	668-011A	1	52" & 60 DECK CHUTE W/DECALS	31	F-1009-01	4-7	1/4" FLAT WASHER
8	P-10937	1	DECAL, "WARNING"	32	F-1015-15	3	5/16-18 X 1" BOLT GR. 5
9	P-10941	2	DECAL, "MULTI PERIL"	33	F-1935	1	CARRIAGE BOLT, 1/4 X 1 1/2"
10	D-3727	1	V-BELT (KEVLAR) A-144, 48"	34	F-1823	1	CARRIAGE BOLT 1/4 X 3/4"
	D-3733	1	V-BELT (KEVLAR) A-158, 52"	35	F-1158	2	1/4-20 STOVER NUT
	D-3764	1	V-BELT (KEVLAR) A-180, 60"	36	629-241W	1	DUST BAFFLE WLDT, (48" ONLY)
11	637-053W	1	OUTLET STIFFENER	37	F-1672	2	CARRIAGE BOLT 3/8 X 1 1/4"
12	643-016W	4	DECK HANGER, (52" & 60")	38	F-1019-03	1	3/8" LOCKWASHER
	643-016W	2	DECK HANGER, (48")	39	H-2239	4	RUE RING
13	651-009W	2	DECK HANGER, SLANTED, (48")	40	F-1521	4	1/2" FLAT WASHER
14	629-230P	1	AIR BAFFLE, (48")	41	F-1889	2	PIN, 1/2 X 2 1/2"
	643-042P	1	AIR BAFFLE, (52" & 60")	42	H-2240	2	PIN, 1/2 X 4 1/2"
15	-----	3	DECK SPINDLE ASS'Y (SEE PG. 1-2)	43	F-1558	8-12	3/8-16 X 7/8" BOLT GR. 5
16	-----	1	IDLER ARM ASSEMBLY (SEE PG. 1-3)				

COUNTRY CLIPPER "CHARGER" MOWER REPAIR PARTS MANUAL



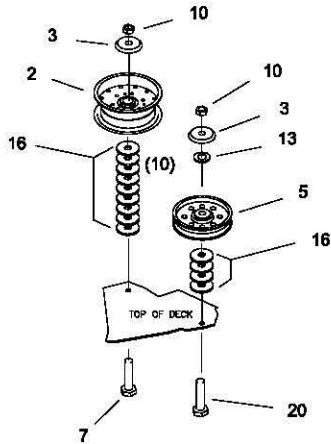
REF NO.	PART NO.	QTY.	DESCRIPTION	REF NO.	PART NO.	QTY.	DESCRIPTION
1	668-018A	1	48" DECK, W/DECALS	24	F-1009-01	7	1/4" FLAT WASHER
	668-019A	1	52" DECK, W/DECALS	25	F-1671	8	CARRIAGE BOLT 5/16 X 3/4
	668-020A	1	60" DECK, W/DECALS	26	F-1009-02	8	5/16" FLAT WASHER
2	668-023A	2	48" PULLEY COVER, W/DECAL	27	F-1125	11	5/16-18 LOCKNUT
	668-024A	2	52" PULLEY COVER W/DECAL	28	F-1015-15	5	5/16-18 X 1" GR. 5
	668-025A	2	60" PULLEY COVER W/DECAL	29	H-2240	2	PIN, 1/2" X 4-1/2"
3	651-009W	2	DECK HANGER ON 42" ONLY	30	F-1889	2	PIN, 1/2" X 2-1/2"
4	637-053W	1	OUTLET STIFFENER	31	F-1521	4	1/2" FLAT WASHER
5	668-010A	1	48" DECK CHUTE W/DECAL	32	H-2239	4	RUE RING 1/2"
	668-011A	1	52 & 60" DECK CHUTE W/DECAL	33	P-10947	1	DECAL, "GREASE SPINDLE"
6	643-016W	2 & 4	DECK HANGER (2 ON 42" & 4 ON 52 & 60")	34	P-10122	1	DECAL, "MISSING CHUTE"
7	F-1019-03	20	3/8 LOCK WASHER	35	P-10935	2	DECAL, "ROTATING..."
8	D-3775	1	V-BELT, (KEVLAR) B-158 (48")	37	P-10941	2	DECAL, "MULTI PERIL"
	D-3776	1	V-BELT, (KEVLAR) B-180 (52" & 60")	38	P-11413	1	DECAL, "HOIST POINT"
10	-----	-----	DOUBLE IDLER ASSEMBLY (SEE PG.1-5)	39	-----	-----	-----
11	-----	3	SPINDLE ASSEMBLY (SEE PG.1-3)	40	P-10937	1	DECAL, "WARNING"
12	-----	-----	BELT TIGHTING SYSTEM (SEE PG.1-5)	41	F-1005-03	18-26	LOCKNUT, 3/8 STOVER
13	609-182P	2	REAR SCALPER BRACKET (52" & 60")	42	F-1158	2	LOCKNUT, 1/4-20
14	H-1948	5	ROLLER, 3-3/4 DIA. X 4-13/16	43	629-230P	1	AIR BAFFLE (48" & 52")
15	609-183P	5	WHEEL BUSHING		643-042P	1	AIR BAFFLE (60")
16	F-1741	6	3/8-16 X 6" GR. 5	44	629-241W	1	DUST BAFFLE WLDT, 48"
17	-----	-----	-----		629-229W	1	DUST BAFFLE WLDT, 52"
18	F-1935	1	CARRIAGE BOLT, 1/4 X 1 1/2		643-047W	1	DUST BAFFLE WLDT, 60"
19	F-1823	1	CARRIAGE BOLT, 1/4 X 3/4	45	P-11932	1	DECAL, BELT ROUTING
20	649-035P	2	DECK HANDLE	46	P-11950	1	DECAL, DECK SIZE 48"
21	F-1672	10	CARRIAGE BOLT, 3/8 X 1-1/4		P-11951	1	DECAL, DECK SIZE 52"
22	F-1538	5	1/4-20 X 3/4 GR. 5		P-11952	1	DECAL, DECK SIZE 60"
23	F-1019-01	4	1/4" LOCKWASHER				

## DECK SPINDLE ASSEMBLY

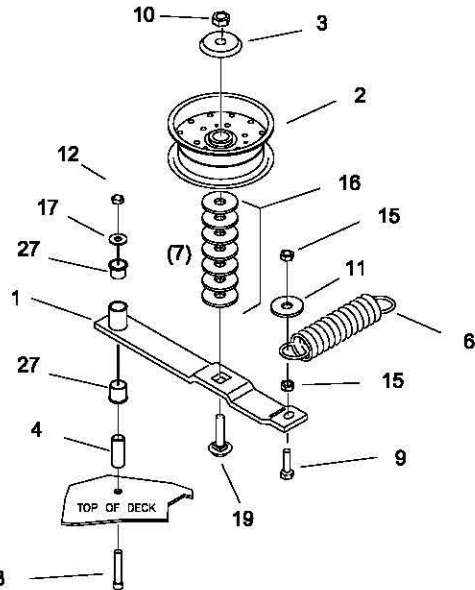


REF NO.	PART NO.	QTY.	DESCRIPTION	REF NO.	PART NO.	QTY.	DESCRIPTION
-	660-045A	-	SPINDLE ASSEMBLY	18	609-155P	-	SPINDLE PULLEY, 48"
1	H-1056	1	GREASE FITTING		D-3732-03	-	SPINDLE PULLEY, 52"
2	609-162P	1	SPINDLE SHAFT		668-006P	-	SPINDLE PULLEY, 60"
3	-----	-	-----	19	F-1572	4	3/8-24 X 1 1/2" HHCS GR. 5
4	-----	-	-----	20	609-034P	4	SPINDLE SPACER REINFORCEMENT
5	D-3058	2	BEARING, #6205-2RS	21	F-1019-03	4	3/8" LOCK WASHER
6	H-1893	1	SNAP RING INT. 52MM	22	F-1573	4	3/8-24 LOCKNUT, M-F
7	609-152P	1	BLADE SPACER	23	H-1714	1	BLADE, HIGH L, 17" CUT 48"
8	D-1004-02	2	KEY, WOODRUF, 1/4 X 3/4		H-2246	-	BLADE, HIGH L, 18 3/8" CUT 52"
9	F-1526	1	1/2-13 X 1 1/2" HHCS GR. 5		H-1708	-	BLADE, HIGH L, 21" CUT 60"
10	F-1454	1	1/2" LOCK WASHER			-	OPTIONAL BLADES
11	F-1507	1	WASHER, 1/2" CUPPED		H-1666	-	BLADE, LOW L, 17" CUT 48"
12	609-151P	1	WASHER, SEAL		H-2387	-	BLADE, LOW L, 18 3/8" CUT, 52"
13	609-073P	1	ARBOR SPACER		H-1667	-	BLADE, LOW L, 21" CUT, 60"
14	H-2066	1	GREASE VENT 5 LBS.			-	
15	F-1461	1	3/4-16 NUT, HEX JAM		H-2202	-	BLADE, GATOR, 17" CUT 48"
16	F-1463	1	3/4" LOCK WASHER		H-2251	-	BLADE, GATOR, 18 3/8" CUT 52"
17	F-1510	1	3/4" WASHER, FLAT STD.		H-2122	-	BLADE, GATOR, 21" CUT 60"

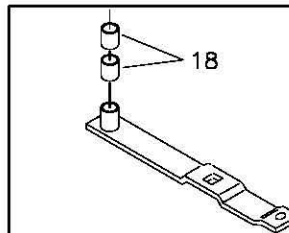
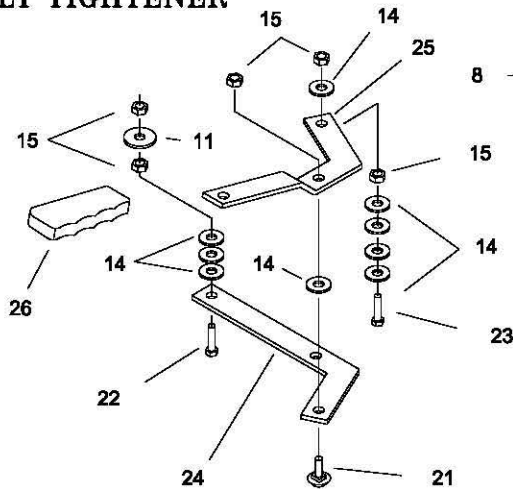
**DECK BELT IDLER & RELATED PARTS**



**DECK IDLER ASSEMBLY & RELATED PARTS**



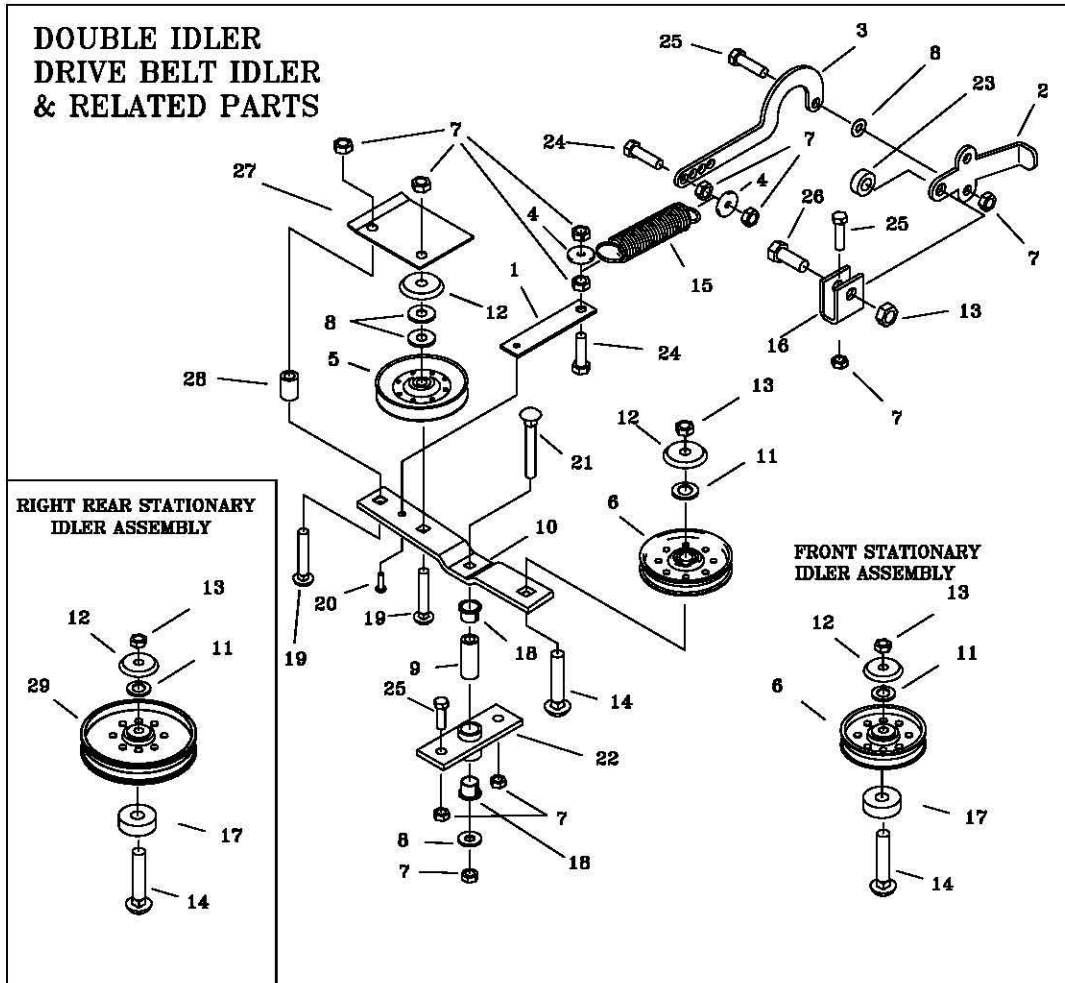
**BELT TIGHTENER**



**DXF BUSHINGS**

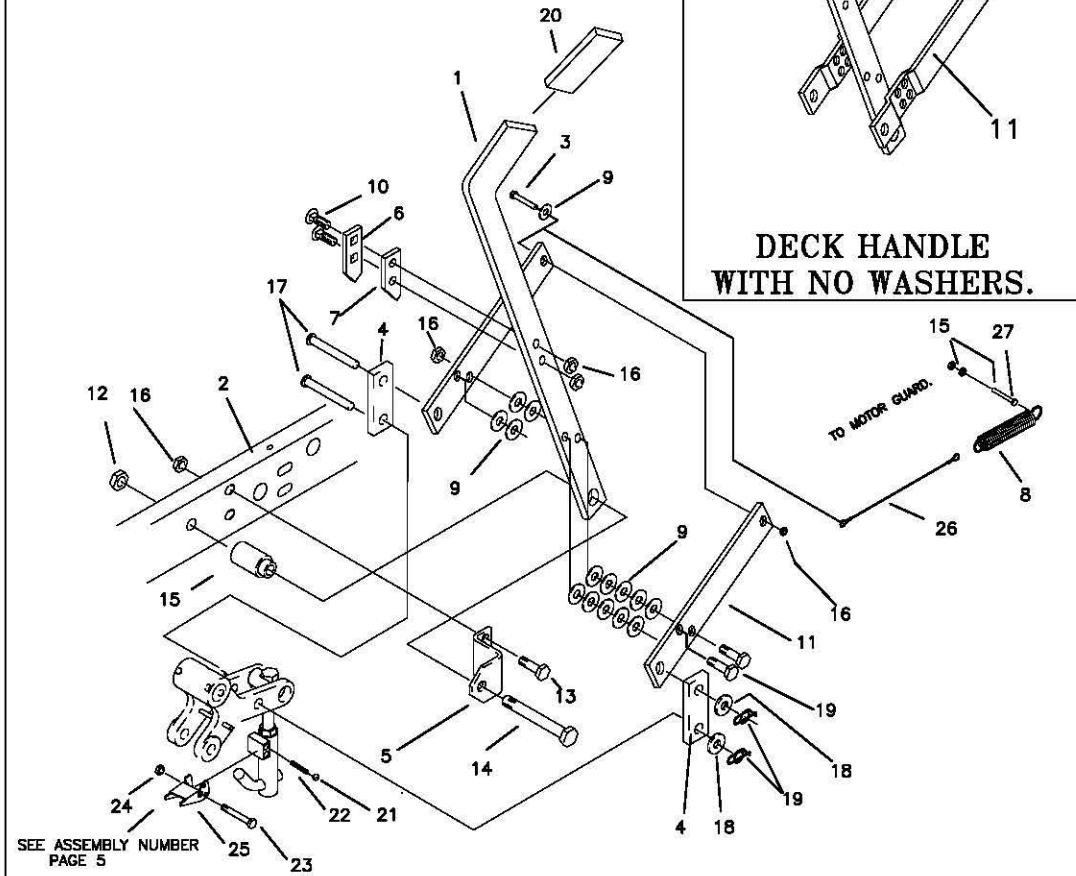
REF NO.	PART NO.	DESCRIPTION	REF NO.	PART NO.	DESCRIPTION
1	637-025W	SINGLE IDLER ARM, LONG	14	F-1009-03	3/8" FLAT WASHER
2	D-3683	IDLER PULLEY, 2" X 5" (BACK OF DECK)	15	F-1005-03	3/8" STOVER NUT
3	620-201P	BEARING CAP	16	F-1009-05	1/2" FLAT WASHER
4	621-103P	MOUNTING PIN	17	F-1009-02	5/16" FLAT WASHER
5	D-3338	PULLEY, FLAT IDLER (MIDDLE OF DECK)	18	D-3573	DXF BUSHING
6	H-2092	SPRING, 1 1/2" X 5"	19	F-1822	1/2-13 X 2 1/4" CARRIAGE BOLT
7	F-1439	1/2-13 X 3" GR. 5	20	F-1664	1/2-13 X 2 1/4" BOLT GR. 5
8	F-1800	5/16-18 SHCS X 2-1/4"	21	F-1394	3/8-16 X 1" GR. 5
9	F-1015-27	3/8-24 X 1 1/2" GR. 5	22	F-1015-27	3/8-16 X 1 1/2" GR. 5
10	F-1005-05	1/2-13 LOCKNUT	23	F-1976	3/8-16 X 2" CARRIAGE BOLT
11	809-034P	REINFORCEMENT WASHER	24	660-025P	ARM, BENT
12	F-1125	5/16 LOCK NUT	25	660-024P	HANDLE, BENT
13	F-1521	1/2" NARROW WASHER	26	H-1926	GRIP, PLASTIC
			27	D-3730	BUSHING, 5/8" BORE

**DOUBLE IDLER  
DRIVE BELT IDLER  
& RELATED PARTS**



REF NO.	PART NO.	QTY.	DESCRIPTION	REF NO.	PART NO.	QTY.	DESCRIPTION
1	660-035P	1	EXTENSION FOR SPRING HANDLE, BELT TIGHTENER	22	660-034W	1	MOUNT, DOUBLE IDLER
2	660-030P	1	ARM, BELT TIGHTENER	23	660-038P	1	3/8" THICK SPACER
3	660-031P	1	SPINDLE SPACER REINFORCEMENT	24	F-1307	2	3/8-16 X 1-1/4" GR. 5
4	609-034P	2	"V" IDLER PULLEY	25	F-1394	4	3/8-16 X 1" GR. 5
5	D-3758	1	IDLER PULLEY	26	F-1526	1	1/2-13 X 1-1/2" GR. 5
6	D-3338	3	IDLER PULLEY	27	668-022P	1	BELT GUARD
7	F-1005-03	11	3/8 LOCK NUT	28	668-021P	1	SPACER, BELT GUARD
8	F-1009-03	5	3/8 FLAT WASHER	29	D-3774	1	5" IDLER PULLEY
9	659-085P	1	MOUNTING PIN				
10	660-036P	1	IDLER ARM				
11	F-1521	3	1/2" FLAT WASHER				
12	620-201P	4	BEARING CAP				
13	F-1005-05	4	1/2" LOCK NUT				
14	F-1822	3	1/2-13 X 2-1/4" GR. 5				
15	H-2092	1	SPRING				
16	661-015P	1	SHACKLE				
17	660-037P	2	1/2" THICK SPACER				
18	D-3730	2	BUSHING, TEFLON COATED				
19	F-1976	2	3/8-16 X 1-3/4" CARRIAGE BOLT				
20	F-1733	1	1/4" DRIVE STUD				
21	F-1865	1	3/8-16 X 2-1/2" CARRIAGE BOLT				

LIFT HANDLE ASSEMBLY  
& RELATED PARTS

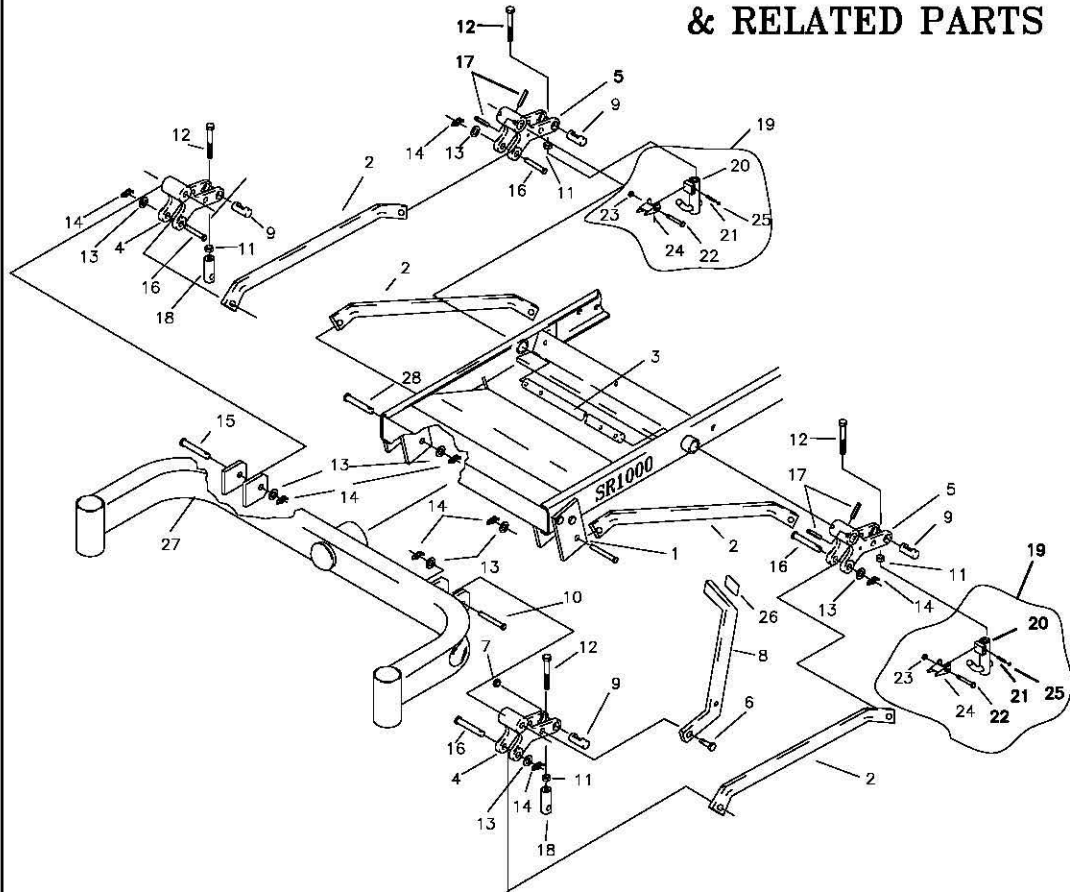


DECK HANDLE  
WITH NO WASHERS.

REF NO.	PART NO.	QTY.	DESCRIPTION	REF NO.	PART NO.	QTY.	DESCRIPTION
1	659-060P	1	LIFT HANDLE	15	642-095P	1	HANDLE PIVOT PIN
2	659-022W	1	FRAME WELDMENT, LH.	16	F-1005-03	5	NUT, 3/8-16 LOCKNUT (STOVER)
3	F-1073	1	3/8-18 X 2" GR 5	17	F-1889	2	CLEVIS PIN, 1/2 X 2 5/8"
4	642-061P	2	HANDLE LINK	18	F-1521	2	1/2" FLAT WASHER
5	642-041P	1	HANDLE PIVOT BRACKET	19	H-2239	2	RUE RING, 1/2"
6	642-127P	1	TOP PEG LATCH PLATE	20	H-2324	1	VINYL GRIP, 3/8 X 1 1/2"
7	642-126P	1	TOP PEG SPACER PLATE	21	D-3723	1	1/4" CHROME STEEL BALL
8	H-1610	1	SPRING, 1 1/2" OD. X 8"	22	H-2390	1	SPRING, .219 OD X .024 WIRE
9	F-1009-03	15	FLAT WASHER, 3/8"	23	F-1716	1	1/4 X 1 1/2" , G.5
10	F-1672	2	CARRIAGE BOLT, 3/8-16 X 1 1/4"	24	F-1158	1	NUT, 1/4" STOVER
11	642-060P	2	SPRING ANCHOR PLATE	25	642-178P	1	LATCH
12	F-1005-05	1	NUT, 1/2-13 LOCKNUT	26	H-2460	1	CABLE
13	F-1558	2	3/8-16 X 7/8" GR. 5	27	F-1293	2	1/2-13 X 1 1/2" GR. 5
14	F-1439	1	1/2-13 X 3" GR. 5				

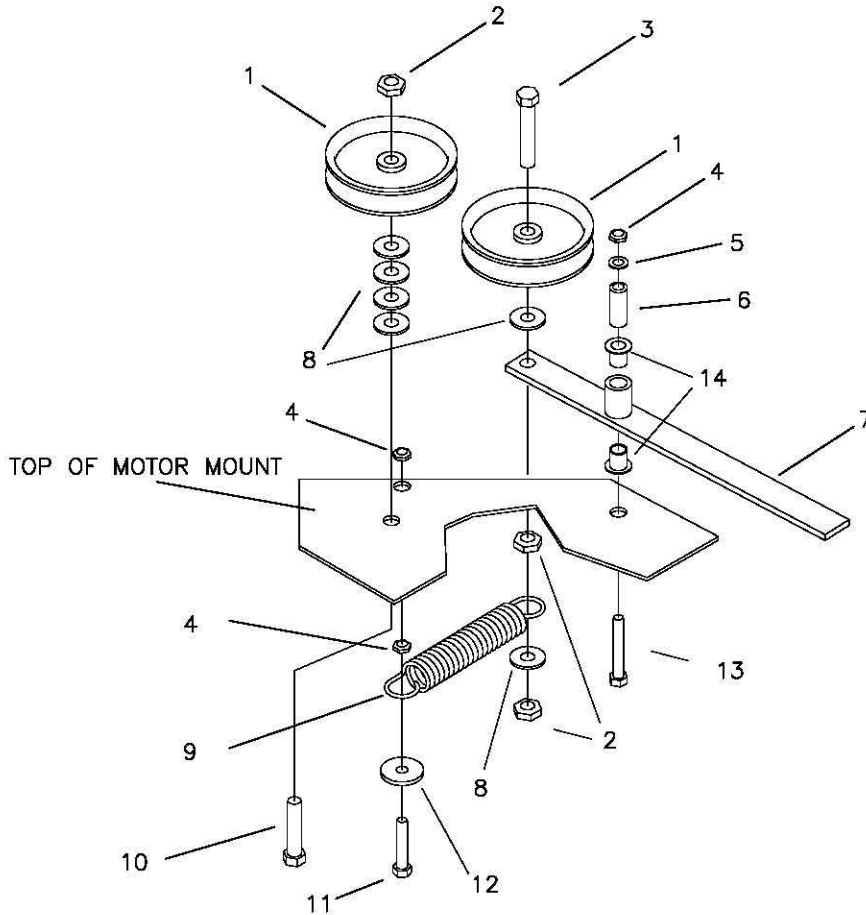


## LIFT ASSEMBLY & RELATED PARTS

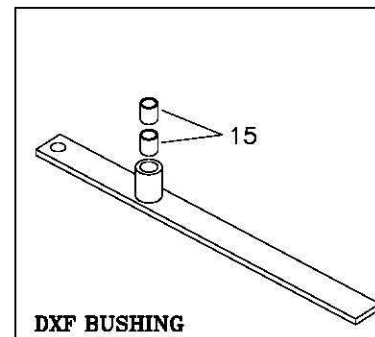


REF NO.	PART NO.	QTY.	DESCRIPTION	REF NO.	PART NO.	QTY.	DESCRIPTION
1	642-083P	2	DRAG BAR TAB	15	F-1890	2	CLEVIS PIN, 1/2 X 3 1/2"
2	659-033P	4	DRAG LINK BAR	16	F-1898	4	CLEVIS PIN, 1/2 X 2 3/4"
3	620-051P	1	LIFT BAR	17	F-1036-37	4	ROLL PIN, 5/16 DIA. X 1.750
4	642-081P	2	LIFT SLEEVE, FRONT	18	642-175P	2	ADJUSTABLE HANGER END
5	642-082P	2	LIFT SLEEVE, REAR	19	642-183A	2	REAR DECK HANGER ASSEMBLY
6	F-1879	1	5/16-18 X 1 1/4" GR.5	20	642-176W	1	REAR DECK HANGER WLDT
7	F-1125	1	5/16-18 STOVER NUT	21	H-2390	1	SPRING, .219 OD X .024 WIRE
8	659-056P	1	DECK LIFT PEDAL	22	F-1716	1	1/4 X 1 1/2", G.5
9	642-177P	4	HANGER PIN	23	F-1158	1	NUT, 1/4" STOVER
10	F-1896	2	CLEVIS PIN, 1/2 X 1 3/4"	24	642-178P	1	LATCH
11	F-1489	4	NUT, 1/2" JAM	25	D-3723	1	1/4" CHROME STEEL BALL
12	F-1936	4	1/2-13 X 3 1/2, 2" THREAD				
13	F-1521	8	WASHER, 1/2 NARROW	26	H-2401	1	TREAD PAD
14	H-2239	8	RUE RING, 1/2"	27	663-003W	1	FRONT AXLE WELDMENT

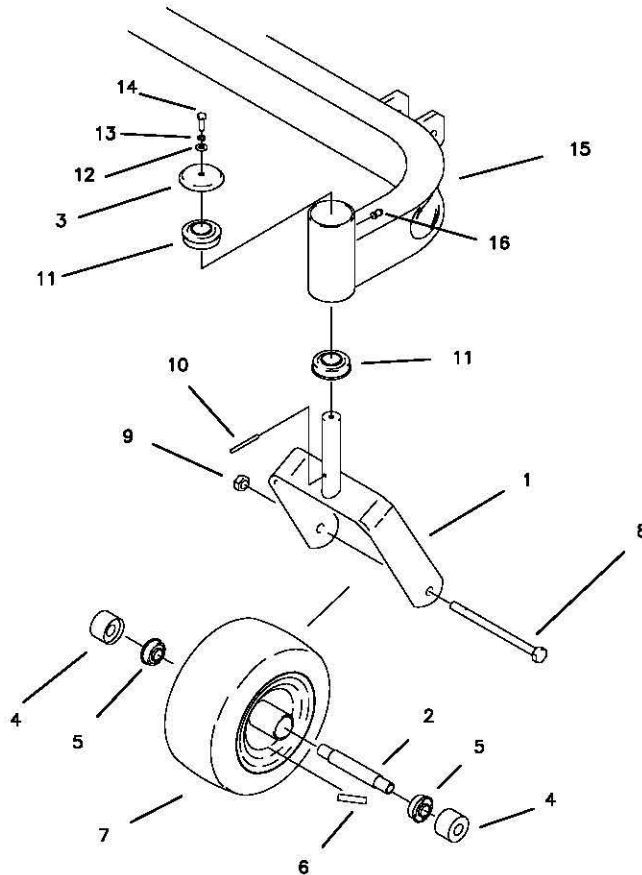
## TRANSMISSION IDLERS & RELATED PARTS



REF NO.	PART NO.	QTY.	DESCRIPTION
1	D-3338	2	4" FLAT IDLER PULLEY
2	F-1005-05	3	1/2-13 STOVER NUT
3	F-1868	1	1/2-13 X 2 3/4 BOLT GR. 5
4	F-1005-03	3	3/8-16 STOVER NUT
5	F-1009-03	1	3/8" FLAT WASHER
6	659-085P	1	MOUNTING PIN
7	663-017W	1	HYDRO IDLER ARM
8	F-1009-05	6	1/2" FLAT WASHER
9	H-2092	1	1 1/4 X 5" SPRING
10	H-1664	1	1/2-13 X 2 1/4" BOLT GR. 5
11	F-1073	1	3/8-16 X 2" BOLT GR. 5
12	609-034P	1	SPACER
13	F-1015-30	1	3/8-16 X 2 1/2" BOLT GR. 5
14	D-3730	2	BUSHING, 5/8" BORE
15	D-3573	2	DXF BUSHING

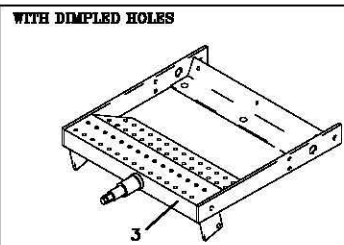
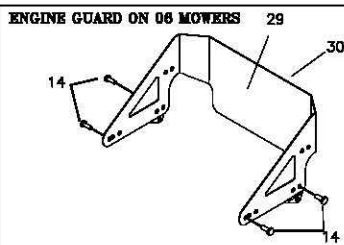
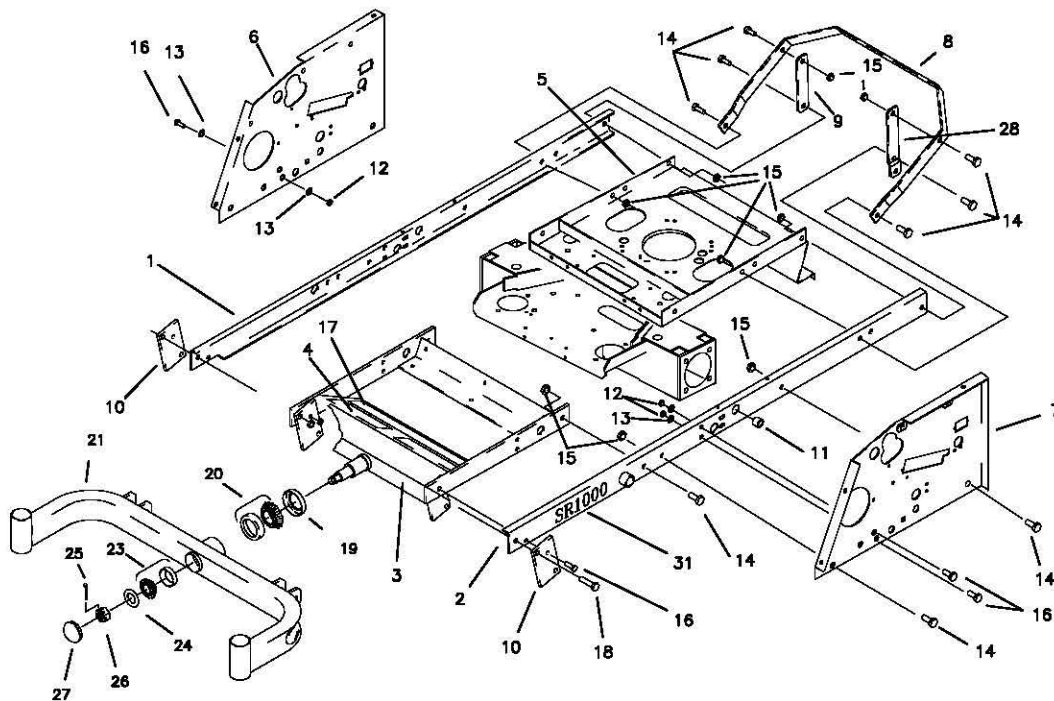


## CASTER WHEEL ASSEMBLY



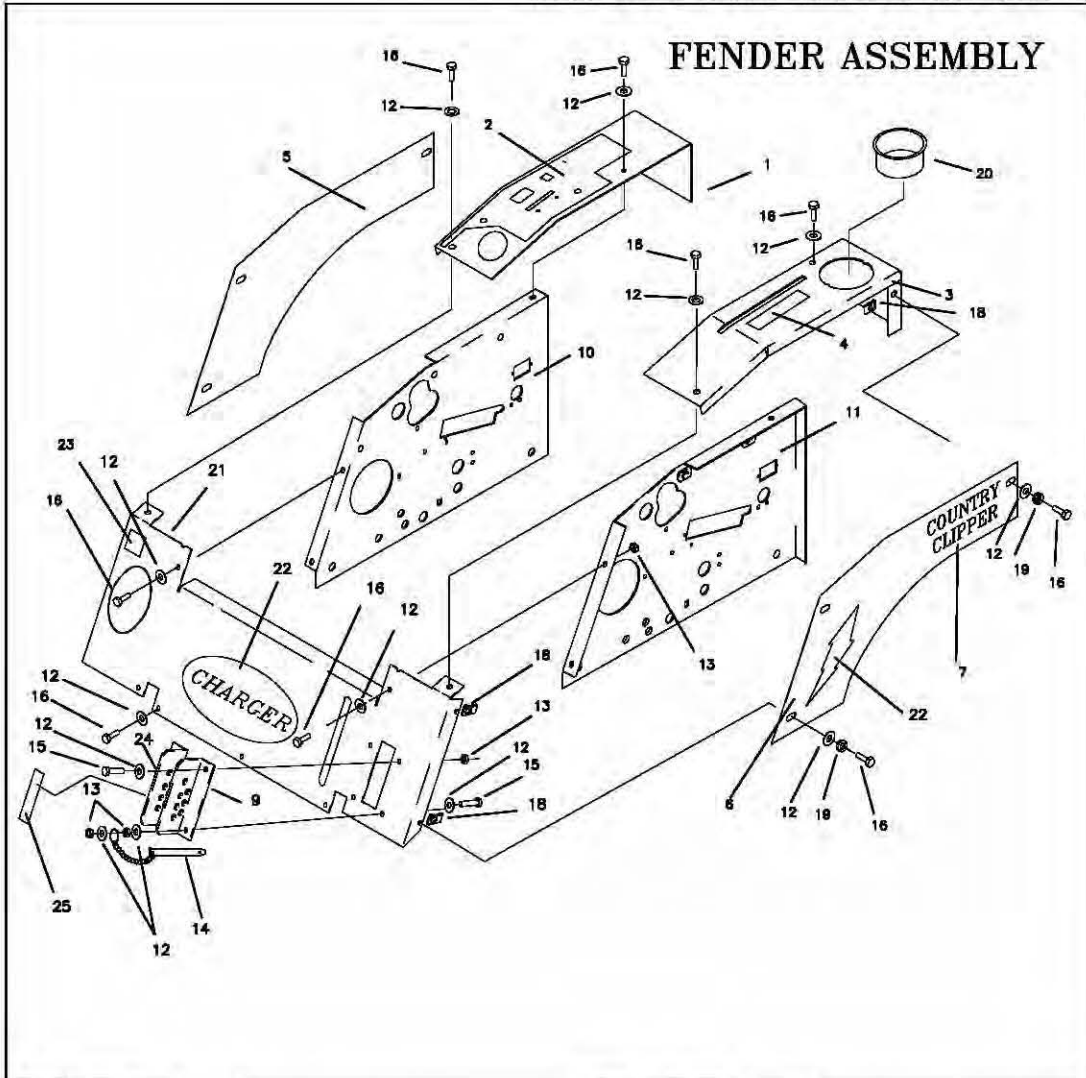
REF NO.	PART NO.	QTY.	DESCRIPTION
1	647-003W	2	CASTER WELDMENT
2	647-038P	2	BEARING SPACER
3	636-133P	2	BEARING CAP, RED
4	611-135P	4	BEARING SHIELD
5	D-3432	4	BEARING, 5/8 ID X 1 3/8 OD
6	P-11384	2	DECAL, 12 PSI
7	D-3670	2	FRONT TIRE/WHEEL
8	F-1908	2	1/2-13 X 6 1/2" GR. 5 BOLT
9	F-1005-05	2	1/2-13 LOCK NUT
10	F-1456	2	3/16 ROLL PIN
11	D-2008-02	4	BEARING, SPD SF-16-32
12	F-1009-01	2	1/4" FLAT WASHER
13	F-1019-01	2	1/4" LOCK WASHER
14	F-1810	2	1/4-20 X 3/4 W/NYLON PATCH
15	-----	1	SEE PAGE 1-5
16	H-1056	2	GREASE ZERK

## FRAME SIDES & RELATED PARTS



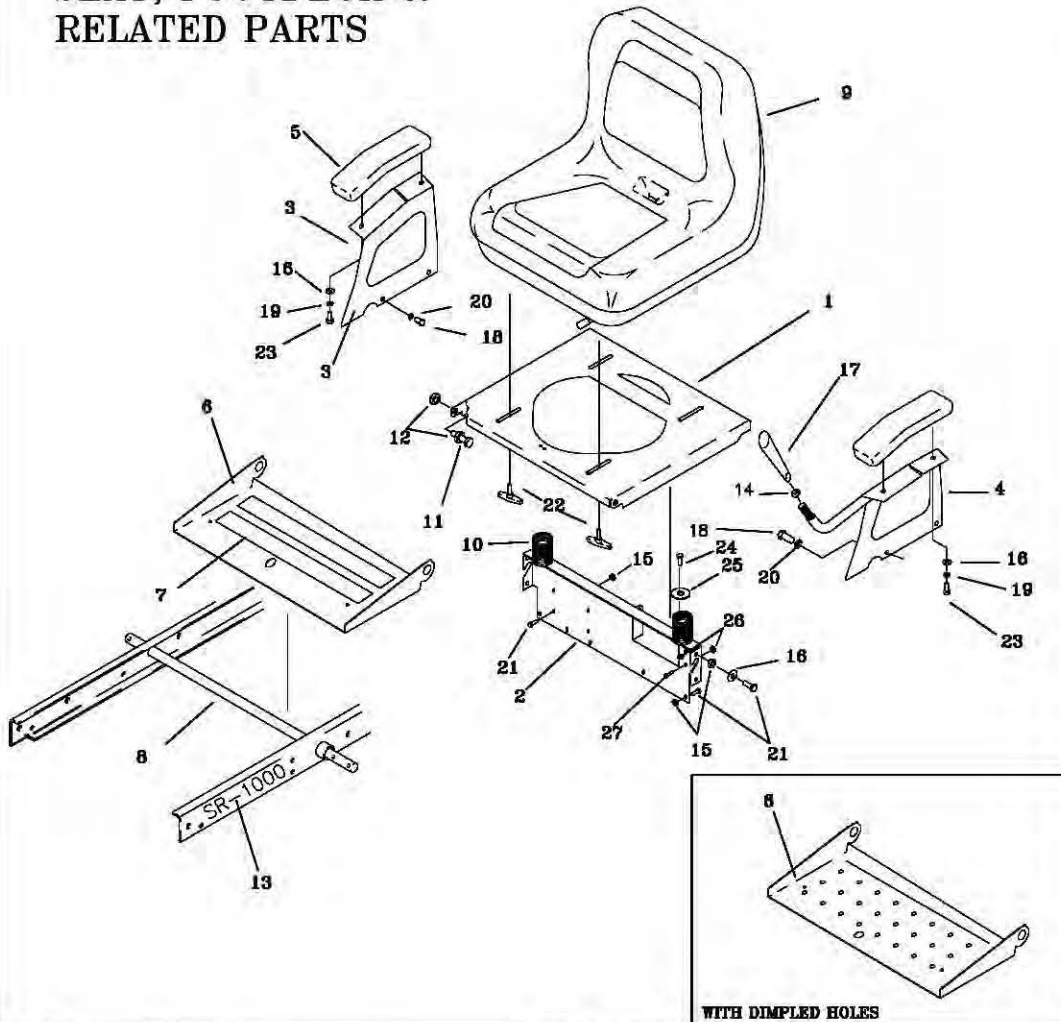
REF NO.	PART NO.	QTY.	DESCRIPTION	REF NO.	PART NO.	QTY.	DESCRIPTION
1	659-021W	1	FRAME SIDE RH.	16	F-1558	6	3/8-18 X 7/8" GR.5
-	663-055A	1	FRAME SIDE RH., W/DECAL 2006	17	H-1931	1	SAFETY TREAD, 2" X 18"
2	659-022W	1	FRAME SIDE LH.	18	F-1293	2	1/2-13 X 2", GR.5
-	663-056A	1	FRAME SIDE LH. W/DECAL 2006	19	D-3647	1	FRONT PIVOT SEAL
3	663-029W	1	AXLE MOUNTING WLDT.	20	D-3646	1	FRONT PIVOT TAPARED ROLLER BRG.
4	H-2448	2	SAFETY MAT	21	663-003W	1	FRONT AXLE WLDT.
5	663-031W	1	MOTOR MOUNT WLDT.	22	-	-	-
6	659-011P	1	SIDE PANEL RH.	23	D-3782	1	TAPARED ROLLER BRG.
7	659-012P	1	SIDE PANEL LH.	24	806-303P	1	1" WASHER
8	642-093P	1	ENGINE GUARD	25	F-1728	1	3/16 X 2" COTTER PIN
9	642-015P	2	ENGINE GUARD MNT. LEG	26	F-1724	1	1-14 SLOTTED NUT
10	642-063P	2	DRAG BAR TAB	27	H-1924	1	GREASE CAP
11	D-3730	2	BUSHING, 5/8 BORE(JOYSTICK)	28	663-048P	1	ENGINE MOUNT LEG
12	F-1005-03	10	3/8-18 STOVER NUT	29	647-098A	1	ENGINE GUARD, 06 MOWER
13	F-1008-03	10	3/8 FLAT WASHER	30	P-12097	1	COLORLED DECAL, "COUNTRY CLIPPER"
14	F-1759	8	1/2-13 X 1" GR.5	31	P-12089	2	DECAL, "SR1000", 06 MOWER
15	F-1005-05	16	1/2-13 LOCK NUT				

## FENDER ASSEMBLY



REF NO.	PART NO.	QTY.	DESCRIPTION	REF NO.	PART NO.	QTY.	DESCRIPTION
1	663-039A	1	FENDER CAP RH W/DECAL	13	F-1125	16	5/16-18 LOCK NUT
-	663-040A	1	FENDER CAP, TWIN STK. RH W/DECAL	14	F-1807	1	1/2" X 2.4 CLEVIS PIN W/SASH
2	P-11626	1	DECAL, "CONTROL PANEL"	15	F-1879	3	5/16-18 X 1 1/4" GR. 5
3	663-041A	1	FENDER CAP LH. W/DECAL	16	F-1015-15	21	5/16-18 X 1" GR.5
-	663-042A	1	FENDER CAP, TWIN STK. LH. W/DECAL	18	F-1860	8	5/16 U-NUT
4	P-11382	1	DECAL, PARK BRAKE	19	F-1019-02	8	5/16 LOCK WASHER
5	663-045A	1	FENDER SKIRT RH W/DECALS	20	644-028P	1	CUP HOLDER
-	663-053A	1	FENDER SKIRT RH W/DECALS, 06 MOWER	21	663-043A	1	FRONT PANEL W/DECALS
6	663-044A	1	FENDER SKIRT LH W/DECALS	22	P-11832	1	DECAL, "CHARGER"
-	663-054A	1	FENDER SKIRT LH W/DECALS, 06 MOWER	23	P-10939	1	DECAL, "CAUTION"
7	P-11566	2	DECAL, COUNTRY CLIPPER	24	642-137A	1	LATCH PLATE LH W/DECAL
9	642-131P	1	LATCH PLATE LH.	-	647-097A	1	LATCH PLATE RH W/DECAL, 06
10	659-011P	1	SIDE PANEL RH.	25	P-11407	1	DECAL, "CUT HEIGHT"
11	659-012P	1	SIDE PANEL LH.	-	P-12034	1	DECAL, "CUT HEIGHT", SR-1000
12	F-1009-02	22	5/16 FLAT WASHER				

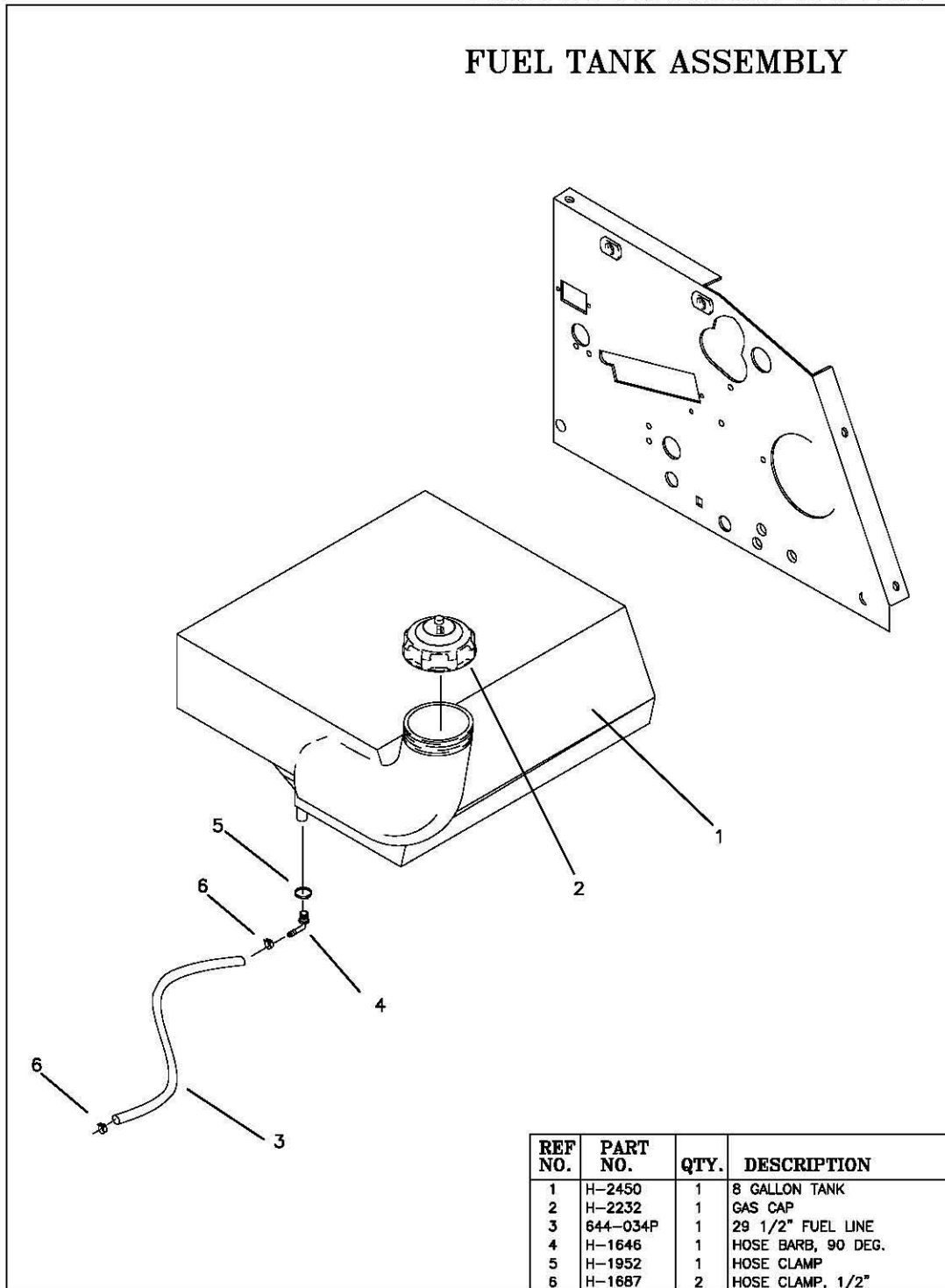
## SEAT, FOOTDECK & RELATED PARTS



WITH DIMPLED HOLES

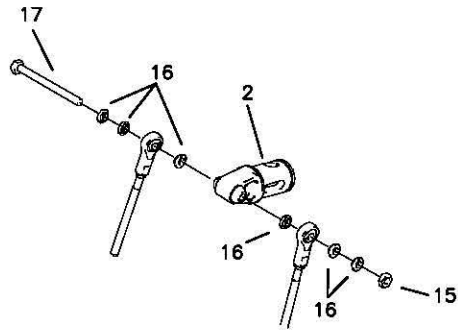
REF NO.	PART NO.	QTY.	DESCRIPTION	REF NO.	PART NO.	QTY.	DESCRIPTION
1	659-005P	1	SEAT MOUNTING BASE	14	F-1486	1	3/8-16 JAM NUT
2	663-010P	1	REAR SEAT BRACE	15	F-1005-02	12	5/16-18 LOCK NUT
3	659-051P	1	ARM REST RH. (JOYSTICK)	16	F-1009-02	8	5/16 FLAT WASHER
-	636-163P	1	ARM REST, (TWIN STICK)	17	H-2317	1	TAPERED HANDLE (JOYSTICK)
4	659-055W	1	ARM REST LH. (JOYSTICK)	18	F-1015-23	4	3/8-16 X 3/4" GR. 5
-	636-163P	1	ARM REST, (TWIN STICK)	19	F-1019-02	4	5/16 LOCK WASHER
5	621-143A	2	ARM REST PAD	20	F-1019-03	4	3/8 LOCK WASHER
6	659-072A	1	FOOT DECK W/TREAD	21	F-1546	12	5/16-18 X 3/4" GR. 5
7	H-1931	2	SAFETY TREAD	22	659-073A	4	T-HANDLE ASSEMBLY
8	620-051P	1	LIFT BAR	23	F-1015-15	4	5/16-18 X 1" GR. 5
9	H-2449	1	SEAT	24	F-1538	3	1/4-20 X 3/4", GR.5
10	H-1920	3	SEAT SPRING	25	620-050P	3	1" HEAVY WASHER
11	F-1015-27	2	3/8-16 X 1 1/2" GR. 5	26	F-1158	5	1/4" STOVER NUT
12	F-1005-03	4	3/8-16 LOCK NUT	27	F-1539	2	1/4-20 X 1 1/4", GR.5
13	P-12099	2	DECAL, SR-1000				

## FUEL TANK ASSEMBLY



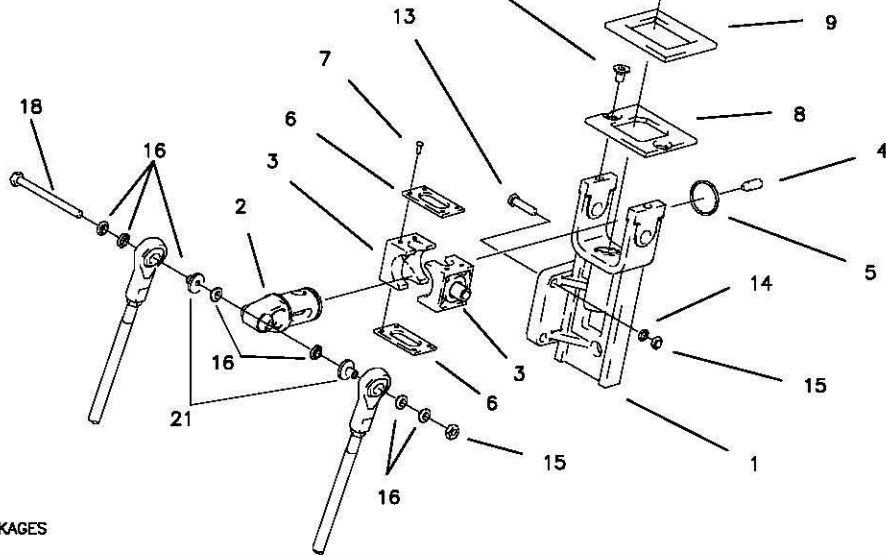
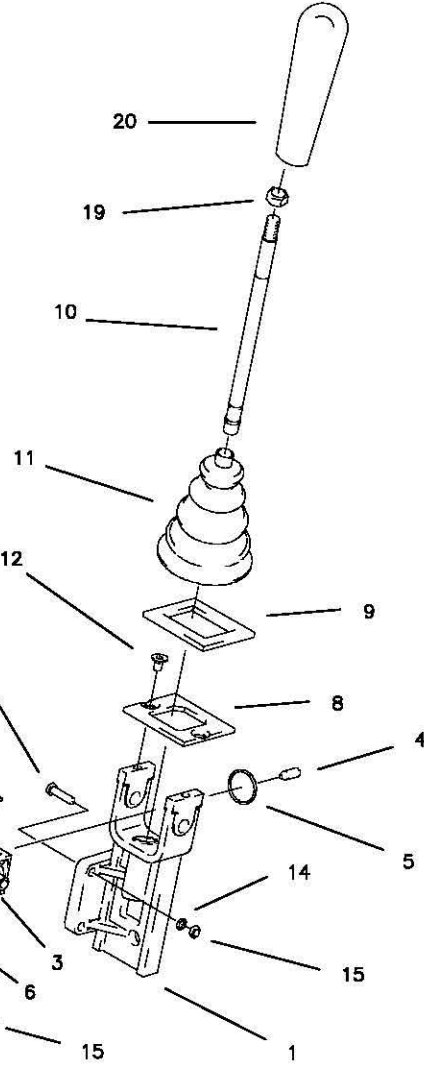
REF NO.	PART NO.	QTY.	DESCRIPTION
1	H-2450	1	8 GALLON TANK
2	H-2232	1	GAS CAP
3	644-034P	1	29 1/2" FUEL LINE
4	H-1646	1	HOSE BARB, 90 DEG.
5	H-1952	1	HOSE CLAMP
6	H-1687	2	HOSE CLAMP, 1/2"

### JOYSTICK STEERING CONTROL AND RELATED PARTS



1/4" LINKAGES

NOTE: ITEM'S #2 AND #3 MUST BE REPLACED AT THE SAME TIME FOR MAXIMUM PERFORMANCE.

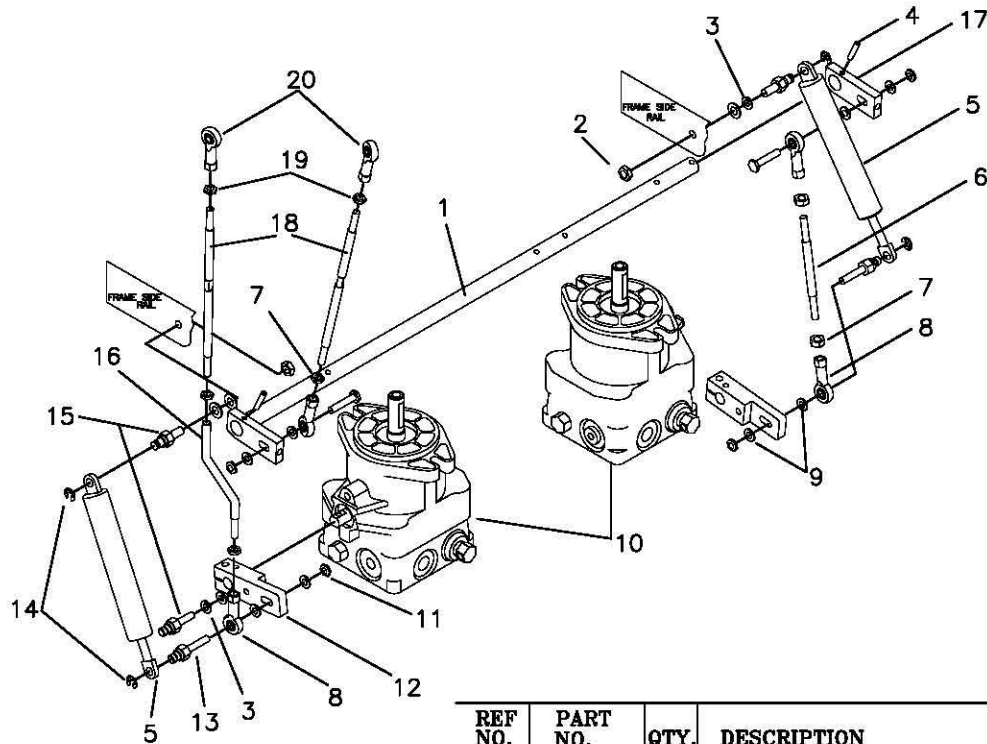


3/8" LINKAGES

REF NO.	PART NO.	QTY.	DESCRIPTION	REF NO.	PART NO.	QTY.	DESCRIPTION
-	636-141A	1	JOYSTICK ASSEMBLY	11	647-111A	1	BOOT W/DXF BUSHING
1	621-124P	1	JOYSTICK YOKE	12	F-1714	2	1/4-20 X 1/2" FHCS GR. 5
2	H-1992	1	PIVOT SHAFT	13	F-1015-05	3	1/4-20 X 1" HHCS GR. 5
3	H-1993	2	PIVOT BLOCK	14	F-1019-01	3	1/4" LOCK WASHER
4	F-1120	1	BALL PLUNGER	15	F-1158	4	1/4-20 LOCK NUT
5	H-1997	1	SNAP RING, SPIRLOCK	16	H-1989	6	BUSHING, BALL JOINT
6	619-306P	2	PIVOT BLOCK PLATE	17	F-1765	1	1/4-20 X 3" GR. 5
7	F-1624	8	#6-32 X 3/8" SCREW SLOT	18	F-1020-01	1	1/4-20 X 3-1/2" GR. 5
8	636-140P	1	JOYSTICK TOP PLATE	19	F-1011-03	1	3/8-16 NUT, JAM
9	H-1947	1	GASKET, FOAM	20	H-2317	1	HANDLE GRIP, TAPERED
10	621-140A	1	JOYSTICK SHAFT ASSEMBLY	21	H-2465	2	1/4" SPACER

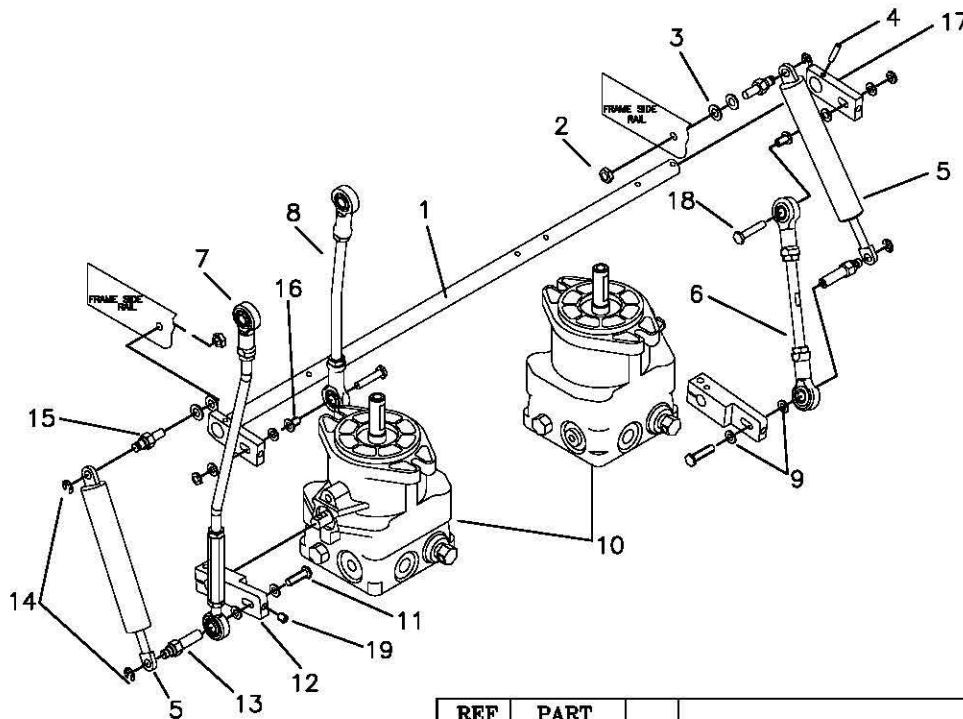


**JOYSTICK STEERING  
CONTROL AND  
RELATED PARTS  
(continued)  
(1/4" LINKAGES)**



REF NO.	PART NO.	QTY.	DESCRIPTION
1	659-026P	1	HYDRO SHIFT ROD
2	F-1125	2	5/16" STOVER NUT
3	F-1009-02	6	5/16" FLAT WASHER
4	F-1503	2	3/16 X 1" ROLL PIN
5	H-2168	2	DUAL ACTION DAMPER
6	663-038P	1	LOWER LINK ROD
7	F-1487	5	1/4-28 UNF THREAD NUT
8	H-1885	4	1/4-28 BALL JOINT
9	F-1009-01	10	1/4" FLAT WASHER
10	----	-	SEE PAGE 3-18
11	F-1558	4	1/4-20 STOVER NUT
12	663-022P	2	SHIFT ARM
13	638-029P	2	1/4-20 X 1-3/16" DAMPNER BOLT
14	F-1610	4	E-RING
15	638-028P	4	5/16-18 X 3/4" DAMPNER BOLT
16	663-037P	1	OFFSET LOWER LINK ROD
17	625-030P	2	SWIVEL ARM
18	659-027P	2	LINK ROD
19	F-1814	2	1/4-28 LH NUT
20	H-2076	2	LH THREAD, 1/4-28 BALL JOINT

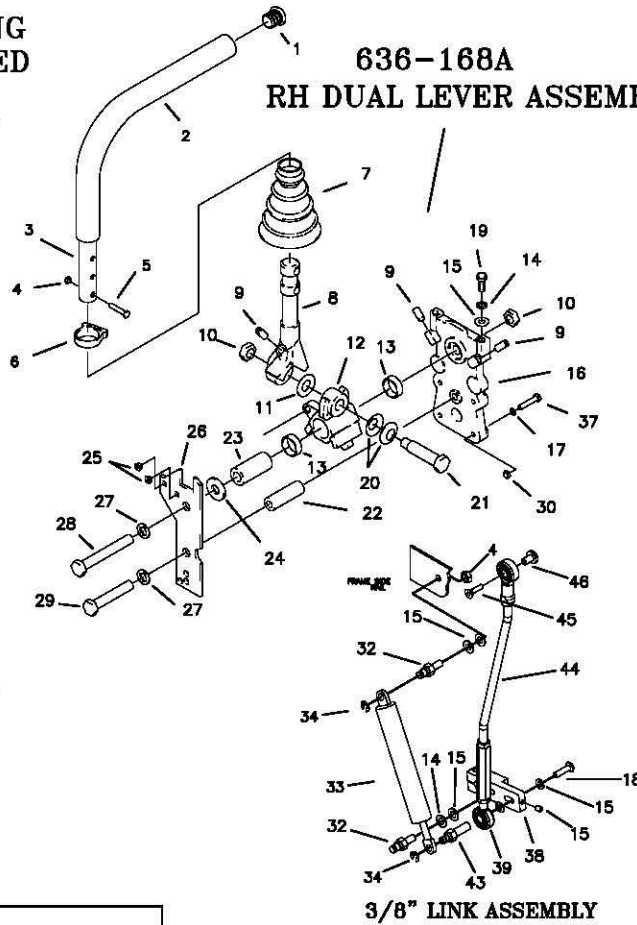
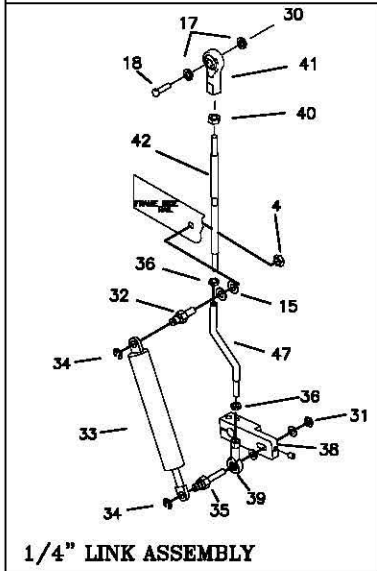
**JOYSTICK STEERING  
CONTROL AND  
RELATED PARTS  
(continued)  
(3/8" LINKAGES)**



REF NO.	PART NO.	QTY.	DESCRIPTION
1	659-026P	1	HYDRO SHIFT ROD
2	F-1125	2	5/16" STOVER NUT
3	F-1009-02	4	5/16" FLAT WASHER
4	F-1503	2	3/16 X 1" ROLL PIN
5	H-2168	2	DUAL ACTION DAMPER, HEAVY DUTY
-	H-2467	2	DUAL ACTION DAMPER, LITE DUTY
6	659-114P	1	LOWER LINKAGE
7	663-050P	1	STEERING LINKAGE ASSEMBLY
8	663-049P	1	STEERING LINKAGE ASSEMBLY
9	F-1009-01	8	1/4" FLAT WASHER
10	----	-	SEE PAGE 3-18
11	F-1015-05	2	1/4-20 X 1" BOLT GR 5
12	663-022P	2	SHIFT ARM
13	663-051P	2	DAMPNER BOLT, FEMALE
14	F-1610	4	E-RING
15	638-028P	2	5/16-18 X 3/4" DAMPNER BOLT
16	H-2465	2	1/4 X 5/16 SHOULDER WASHER
17	625-030P	2	SWIVEL ARM
18	F-1716	2	1/4-20 X 1-1/2" BOLT GR 5
19	F-1695	2	1/4-20 SETSCREW

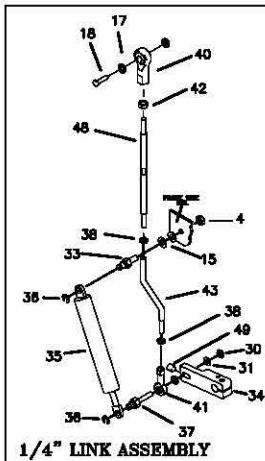
**RIGHT HAND STEERING CONTROL AND RELATED PARTS**

**636-168A  
RH DUAL LEVER ASSEMBLY**

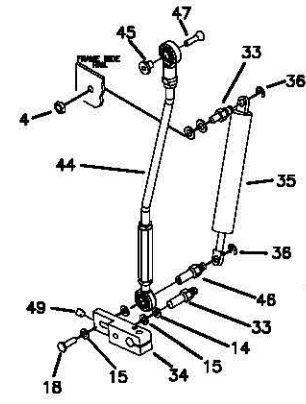


REF NO.	PART NO.	QTY.	DESCRIPTION	REF NO.	PART NO.	QTY.	DESCRIPTION
-	636-168A	1	RH DUAL LEVER ASSEMBLY	25	F-1847	2	GROMMET, #4 X 1/4" SQ.
1	H-2080	1	END PLUG, 15/16" BLACK	26	636-167P	1	TOP PLATE, DUALEVER
2	H-2079	1	FOAM GRIP, 17"	27	F-1464	2	1/2" LOCK WASHER
3	642-004A	1	CONTROL LEVER ASSEMBLY	28	F-1828	1	1/2-13 X 3-1/2" HHCS GR. 5
4	F-1125	3	5/16 LOCK NUT	29	F-1439	1	1/2-13 X 3" HHCS GR. 5
5	F-1015-17	2	5/16-18 X 1-1/2" HHCS GR. 5	30	F-1158	2	1/4-20 LOCK NUT
6	H-2089	1	HOSE CLAMP	31	F-1009-01	2	1/4" FLAT WASHER
7	H-2081	1	BOOT, TAPERED 1" CUFF	32	638-028P	1	DAMPER BOLT, 5/16-18 X 3/4"
8	625-063P	1	LEVER, DUALEVER	33	H-2168	1	STEERING DAMPER
9	F-1842	3	SETSCREW, 5/16-18 X 3/4"	34	F-1610	2	E-RING FOR 1/4" SHAFT
10	F-1489	2	1/2-13 JAM NUT	35	638-029P	1	DAMPER BOLT, 1/4-20
11	H-2116	1	WASHER, FIBER	36	F-1487	2	NUT, HEX 1/4-28 UNF
12	638-033P	1	PIVOT BLOCK, DUALEVER	37	F-1539	3	1/4-20 X 1-1/4" HHCS GR. 5
13	D-3622	2	BEARING	38	663-022P	1	SHIFT ARM
14	F-1019-02	2	5/16" LOCK WASHER	39	H-1885	1	BALL JOINT W\1/4-28 THREAD
15	F-1009-02	4	WASHER, FLAT STD. 5/16"	40	F-1814	1	LH 1/4-20 NUT
16	638-034P	1	BASE DUALEVER	41	H-2076	1	LH BALL JOINT
17	F-1019-01	11	1/4" LOCK WASHER	42	659-027P	1	LINK ROD
18	F-1015-05	1	1/4-20 X 1" HHCS GR. 5	43	663-051P	1	DAMPNER BOLT, FEMALE
19	F-1546	1	5/16-18 X 3/4" HHCS GR. 5	44	663-050P	1	LINK ROD ASSEMBLY
20	H-2115	2	WASHER, SPRING	45	F-1974	1	1/4-20 X 1-1/4" SOCK BOLT
21	625-070P	1	SHOULDER BOLT, 5/8" OD	46	H-2465	1	1/4 X 5/16" SHOULDER WASHER
22	625-067P	1	BUSHING, STAND OFF	47	663-037P	1	OFFSET LINK ARM
23	625-064P	1	BUSHING, PIVOT BLOCK	48	F-1695	1	1/4-20 SETSCREW
24	625-072P	1	WASHER, FLAT				

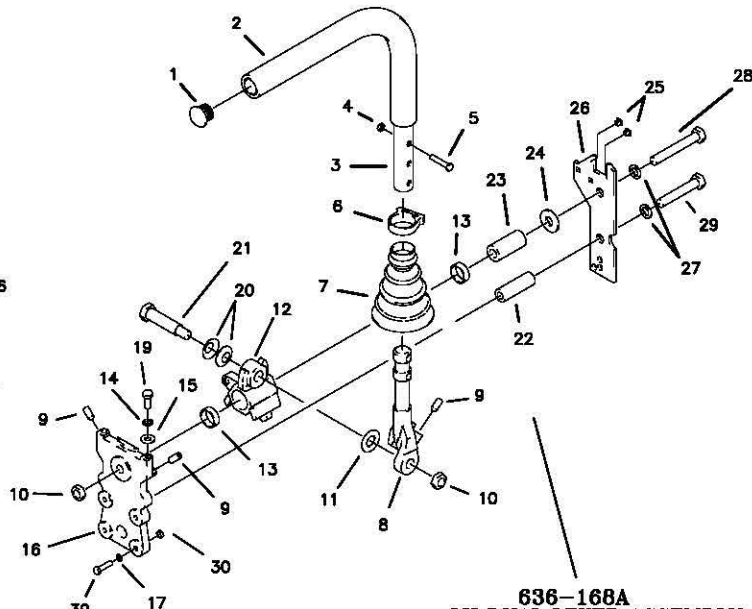
**LEFT HAND STEERING CONTROL AND RELATED PARTS**



1/4" LINK ASSEMBLY



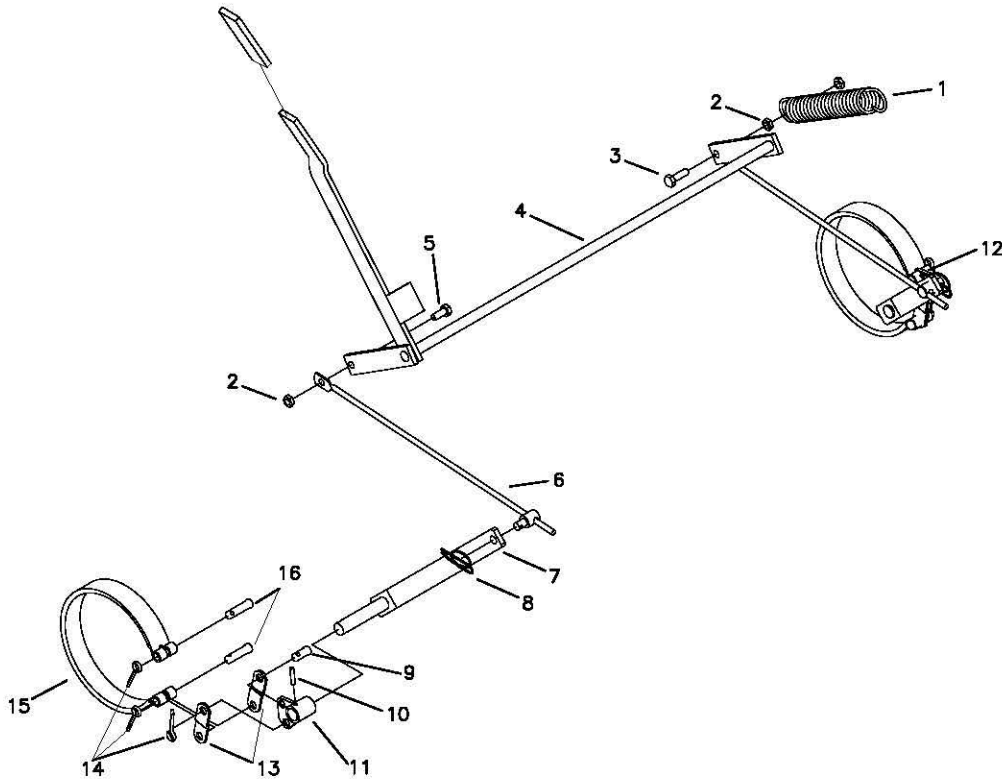
3/8" LINK ASSEMBLY



636-168A  
LH DUAL LEVER ASSEMBLY

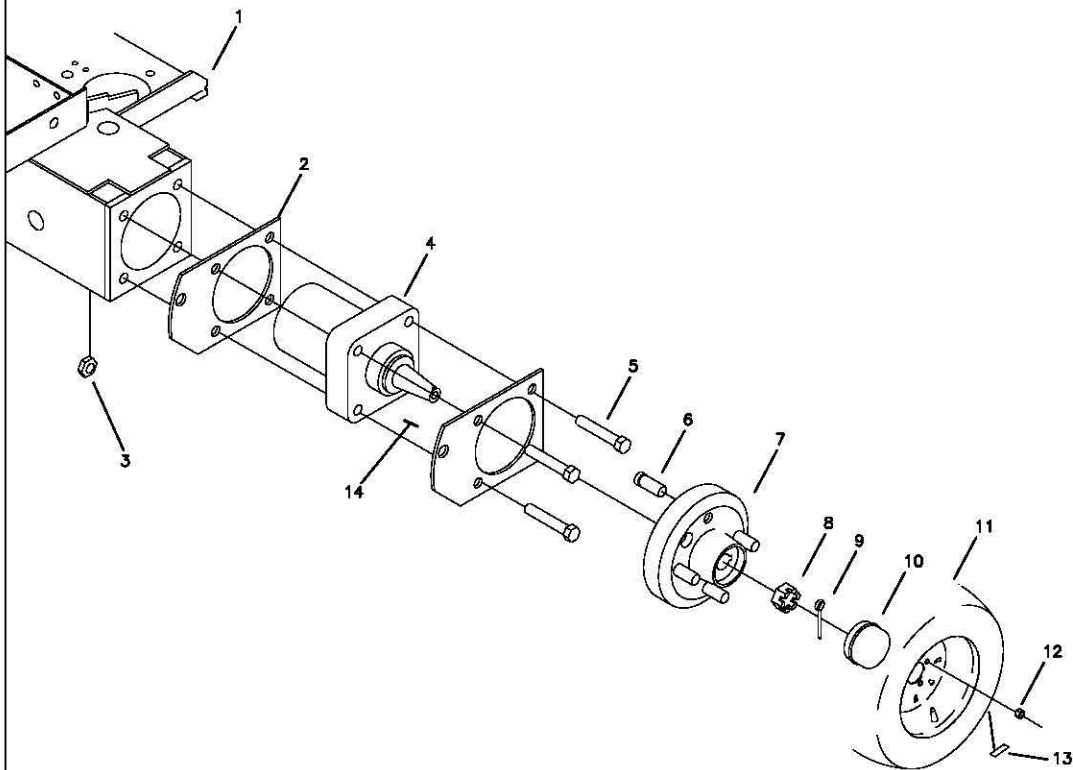
REF NO.	PART NO.	QTY.	DESCRIPTION	REF NO.	PART NO.	QTY.	DESCRIPTION
-	636-168A	1	LH DUAL LEVER ASSEMBLY	25	F-1847	2	GROMMET, #4 X 1/4" SQ.
1	H-2080	1	END PLUG, 15/16" BLACK	26	636-167P	1	TOP PLATE, DUALEVER
2	H-2079	1	FOAM GRIP, 17"	27	F-1464	2	1/2" LOCK WASHER
3	642-004A	1	CONTROL LEVER ASSEMBLY	28	F-1828	1	1/2-13 X 3-1/2" HHCS GR. 5
4	F-1125	3	5/16 LOCK NUT	29	F-1439	1	1/2-13 X 3" HHCS GR. 5
5	F-1015-17	2	5/16-18 X 1-1/2" HHCS GR. 5	30	F-1158	5	1/4-20 LOCK NUT
6	H-2089	1	HOSE CLAMP	31	F-1009-01	2	1/4" FLAT WASHER
7	H-2081	1	BOOT, TAPERED 1" CUFF	32	F-1011-01	1	1/4-20 PLAIN NUT
8	625-063P	1	LEVER, DUALEVER	33	638-028P	2	DAMPNER BOLT, 5/16-18 X 3/4"
9	F-1842	3	SETSCREW, 5/16-18 X 3/4"	34	663-022P	1	SHIFT ARM
10	F-1489	2	1/2-13 JAM NUT	35	H-2168	1	STEERING DAMPER
11	H-2116	1	WASHER, FIBER	36	F-1610	2	E-RING FOR 1/4" SHAFT
12	638-033P	1	PIVOT BLOCK, DUALEVER	37	638-029P	1	DAMPNER BOLT, 1/4-20
13	D-3622	2	BEARING	38	F-1487	2	NUT, HEX 1/4-28 UNF
14	F-1019-02	3	5/16" LOCK WASHER	39	F-1539	3	1/4-20 X 1-1/4" HHCS GR. 5
15	F-1009-02	3	WASHER, FLAT STD. 5/16"	40	H-2076	1	LH BALL JOINT
16	638-034P	1	BASE DUALEVER	41	H-1885	1	BALL JOINT W\1/4-28 THREAD
17	F-1019-01	11	1/4" LOCK WASHER	42	F-1814	1	LH 1/4-24 NUT
18	F-1015-05	1	1/4-20 X 1" HHCS GR. 5	43	663-037P	1	OFFSET LOWER LINK ROD
19	F-1546	1	5/16-18 X 3/4" HHCS GR. 5	44	663-050P	1	LINK ROD ASSEMBLY
20	H-2115	2	WASHER, SPRING	45	H-2465	1	1/4 X 5/16" SHOULDER WASHER
21	625-070P	1	SHOULDER BOLT, 5/8" OD	46	663-051P	1	DAMPNER BOLT, 1/4-20 FEMALE
22	625-067P	1	BUSHING, STAND OFF	47	F-1974	1	1/4-20 XD 3-1/2" BOLT GR 5
23	625-064P	1	BUSHING, PIVOT BLOCK	48	659-027P	1	LINK ROD
24	625-072P	1	WASHER, FLAT	49	F-1695	1	1/4-20 SETSCREW

**PARKING BRAKE ASSEMBLY  
& RELATED PARTS**



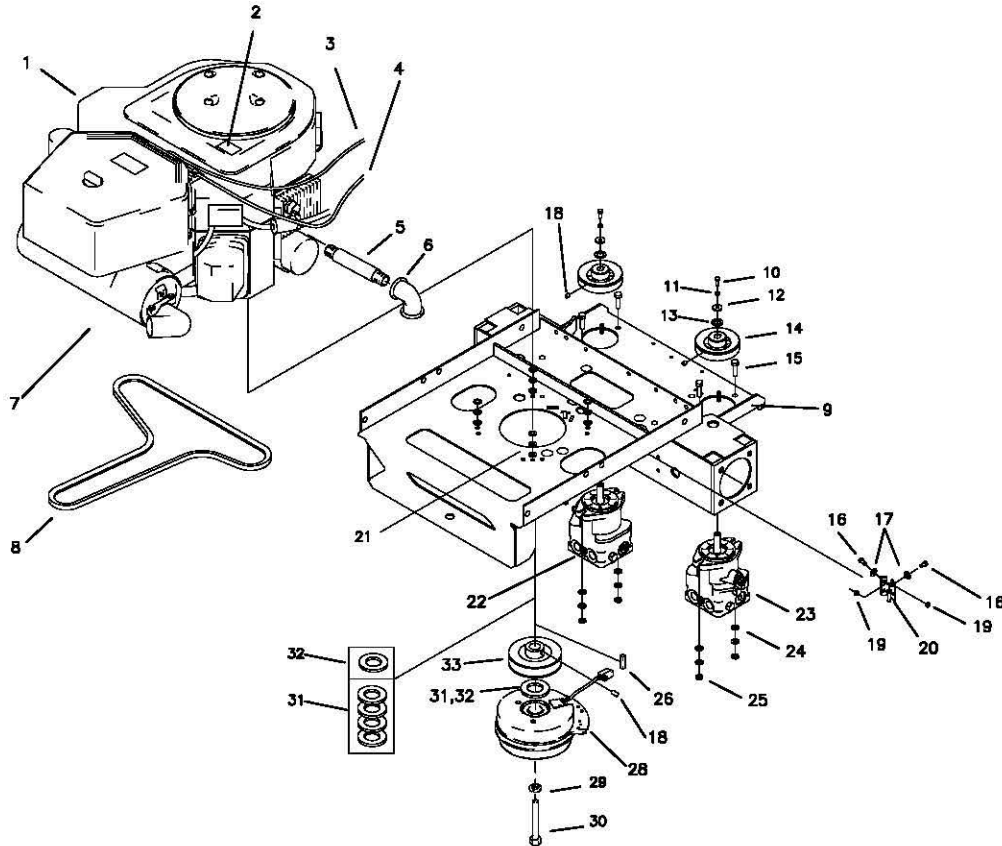
REF NO.	PART NO.	QTY.	DESCRIPTION
1	H-1635	1	3/4 X 4" SPRING
2	F-1125	3	5/16-18 STOVER NUT
3	F-1015-15	1	5/16-18 X 1" BOLT
4	663-024W	1	BRAKE ROD WLDT
5	F-1546	1	5/16-18 X 3/4" BOLT
6	H-2451	2	BRAKE LINK ROD ASSEMBLY
7	647-013W	2	BRAKE ARM WLDT
8	F-1492	2	5/16 X 3/8" RUE RING
9	F-1438	2	3/8 X 3/4" CLEVIS PIN
10	F-1553	2	5/16 X 7/8" ROLL PIN
11	647-029W	1	SHORT BRAKE ARM (LH)
12	647-028W	1	SHORT BRAKE ARM (RH)
13	647-010P	4	BRAK ANCHOR LINK
14	F-1491	6	1/8 X 1" COTTER PIN
15	D-3668	2	BRAKE BAND 6" X 1" WIDE
16	F-1444	4	3/8 X 1 5/16" CLEVIS PIN
17	H-1926	1	GRIP HANDLE

**GEAR MOTOR, WHEEL ASSEMBLY**



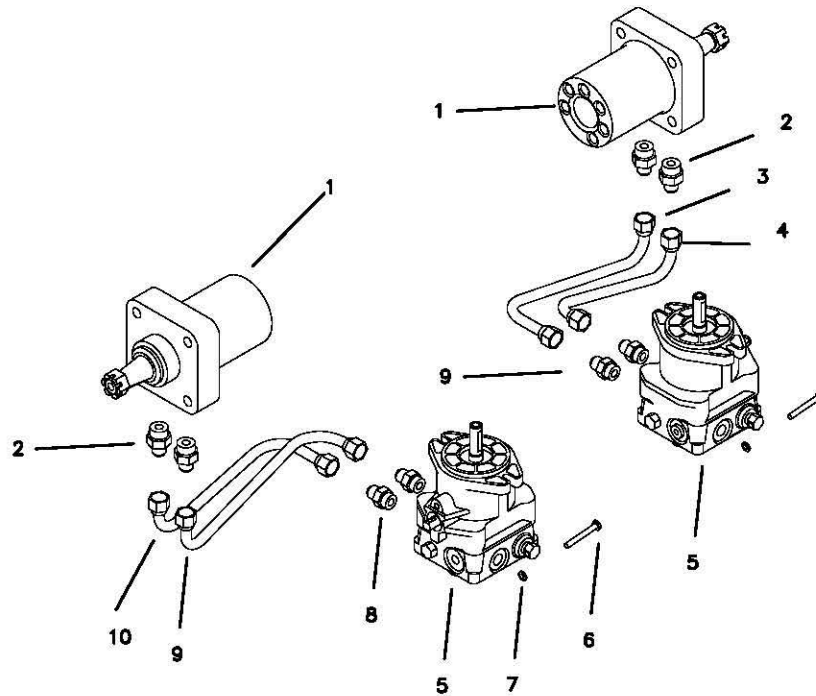
REF NO.	PART NO.	QTY.	DESCRIPTION
1	663-031W	1	MOTOR MOUNT
2	647-017P	4	BRAKE MOUNT
3	F-1005-05	8	1/2-13 STOVER NUT
4	D-3667	2	WHEEL MOTOR PARKER "TE" SERIES
5	F-1668	8	1/2-13 X 2 3/4" BOLT GR. 5
6	F-1654	8	WHEEL STUD (REPLACEMENT)
7	647-041P	2	WHEEL HUB
8	F-1909	2	3/4-16 CASTLE NUT
9	F-1396	2	1/8 X 1 1/2" COTTER PIN
10	H-1798	1	GREASE CAP
11	D-3637	2	TIRE/WHEEL ASSEMBLY ON 48" DECKS
-	D-3669	2	TIRE/WHEEL ASSEMBLY ON 52" & 60" DECKS
12	F-1499	8	LUG NUT 1/2-20 X 60 DEG.
13	P-11384	1	DECAL, 12 PSI
14	D-1004-01	2	1/4 X 1" KEY

**MOTOR ASSEMBLY  
& RELATED PARTS**



REF NO.	PART NO.	QTY.	DESCRIPTION	REF NO.	PART NO.	QTY.	DESCRIPTION
1	M-5330	1	19 HP. KAWASAKI ENGINE	14	647-035P	2	HYDRO PUMP PULLEY
-	M-5342	1	20 HP. KOHLER ENGINE	15	F-1307	4	3/8-16 X 1 1/4" BOLT GR. 5
-	M-5324	1	23 HP. KAWASAKI ENGINE	16	F-1015-02	2	1/4-20 X 5/8" BOLT GR. 5
-	M-5325	1	23 HP. KOHLER ENGINE	17	F-1009-01	2	1/4" FLAT WASHER
-	M-5327	1	25 HP. KAWASAKI ENGINE	18	F-1228	2	1/4-20 NYLOC SETSCREW
-	M-5316	1	25 HP. KOHLER ENGINE	19	F-1158	2	1/4-20 STOVER NUT
-	M-5335	1	27 HP. KOHLER ENGINE	20	659-015W	1	CLUTCH STOP WELDMENT
2	P-10077	1	DECAL, "CLEAN"	21	606-348P	12	10 GA. WASHER (23 HP & 25 HP KAW.)
3	H-2235	1	CHOKE CABLE	22	D-3770-01	1	HYDRO PUMP (LH)
-	H-2404	1	CHOKE CABLE, (23, 25, 27 KOHLER)	23	D-3770-02	1	HYDRO PUMP (RH)
4	H-2236	1	THROTTLE CABLE	24	F-1009-03	8	3/8" FLAT WASHER
5	H-1082	1	PIPE, 3/8 X 3" (KOHLER)	25	F-1005-03	4	3/8-18 STOVER NUT
-	H-1451	1	PIPE, 3/8 X 2 1/2" (KOHLER)	26	621-113P	1	KEY, 1/4" SQ. X 1 1/4"
6	H-1218	1	ELBOW, 3/8 X 90 DEG. (KOHLER)	28	E-6317	1	1" CLUTCH BRAKE, 19 HP. & 20 HP ENG.
7	H-2284	1	MUFFLER ASSEMBLY (KAWASAKI)	-	E-6247	1	1 1/8" CLUTCH BRAKE, 23HP AND HIGHER
8	D-3769	1	V-BELT A-67 KEVLAR	29	F-1019-04	1	7/16 LOCK WASHER
9	663-031W	1	MOTOR MOUNT	30	F-1904	1	7/16-20 X 2 1/2" BOLT GR. 5
10	F-1737	2	6mm X 16mm BOLT GR. 5	31	611-143P	5	1 1/8" 10 GA. WASHER (23 & 25 KAW.)
11	F-1738	2	6mm SPRING WASHER	32	606-303P	2	1" 10 GA. WASHER (19 HP. & 20 HP.)
12	F-1736	2	WASHER, .840 X .246 X .125	33	D-3726	1	MOTOR PULLEY, 3.75 (19 HP & 20 HP)
13	663-048P	2	WASHER, SPACER	-	647-036P	1	MOTOR PULLEY, (23 HP AND HIGHER)

**HIGH PRESSURE  
LINES & FITTINGS**

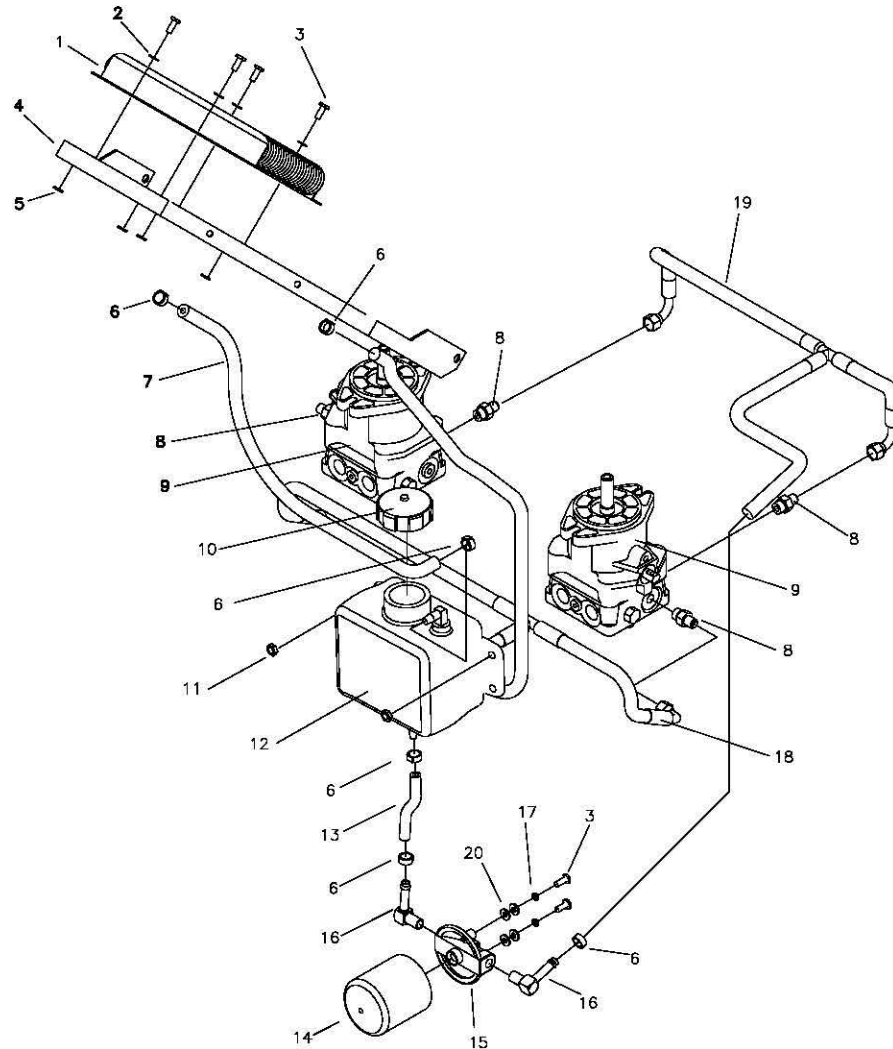


**VIEWED FROM FRONT RIGHT**

REF NO.	PART NO.	QTY.	DESCRIPTION
1	D-3667	2	WHEEL MOTOR PARKER "TE" SERIES
2	H-2319	4	FITTING, STRIGHT, 7/8-14
3	H-2443	1	TUBE ASS'Y, LH. FORWARD
4	H-2444	1	TUBE ASS'Y, LH. REVERSE
5	-----	-	SEE PAGE 3-21
6	F-1015-09	2	1/4-20 X 2" BOLT GR. 5
7	F-1158	2	1/4-20 STOVER NUT
8	H-2436	4	FITTING, STRAIGHT, 3/4" X 1/2"
9	H-2442	1	TUBE ASS'Y, RH. REVERSE
10	H-2441	1	TUBE ASS'Y, RH. FOWARD

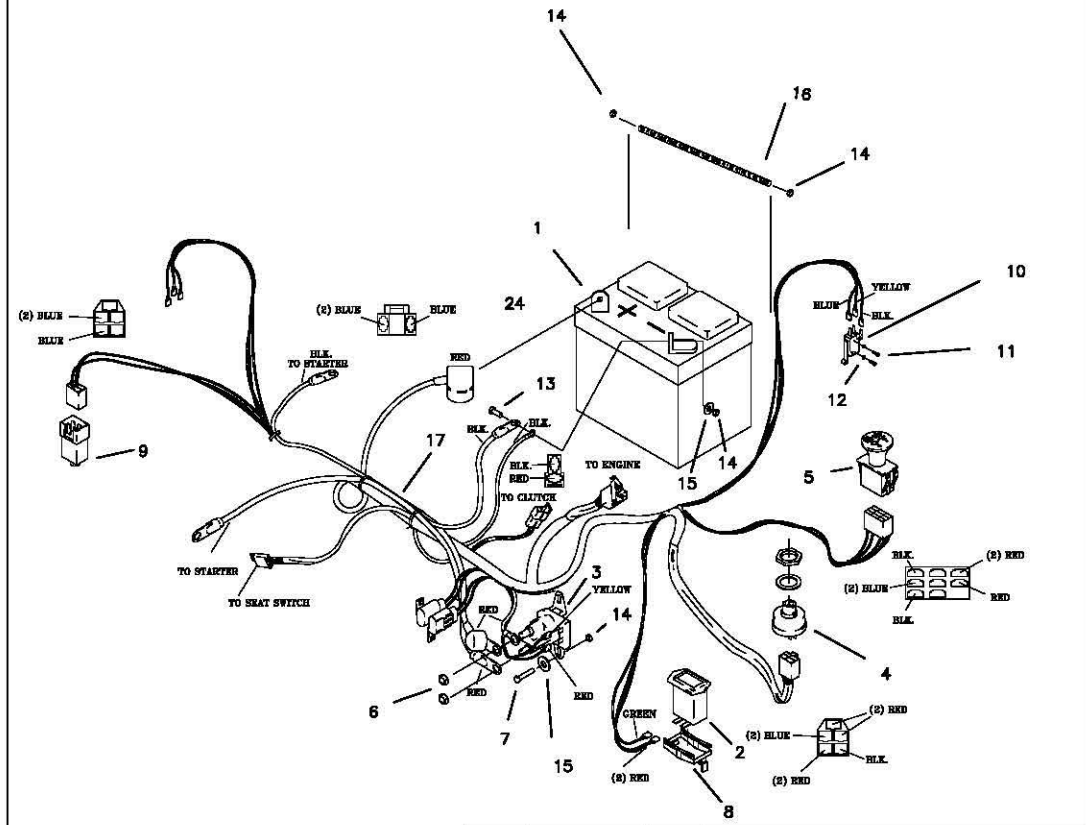


**OIL RETURN LINES &  
COOLER ASSEMBLY**



REF NO.	PART NO.	QTY.	DESCRIPTION	REF NO.	PART NO.	QTY.	DESCRIPTION
1	H-2325	1	OIL COOLER	11	F-1125	2	5/16-18 STOVER NUT
2	F-1009-01	4	1/4" WASHER	12	H-2447	1	OIL TANK
3	F-1015-03	6	1/4-20 X 3/4" BOLT GR. 5	13	H-2437	1	4 1/4" HOSE, 3/8 id. HI TEMP.
4	647-046W	1	OIL COOLER BRACKET	14	H-2026	1	OIL FILTER
5	F-1158	4	1/4-20 STOVER NUT	15	H-2061	1	FILTER BASE
6	H-2282	6	HOSE CLAMP	16	H-1859	2	HOSE BARB 90 DEG. ELBOW
7	H-2438	1	24" HOSE, 3/8" ID. HI TEMP.	17	F-1019-01	2	1/4" LOCK WASHER
8	H-2330	4	9/16" ADAPTER	18	H-2440	1	RETURN HOSE TEE ASSEMBLY
9	-----	-	SEE PAGE 3-21	19	H-2439	1	SUCTION HOSE TEE ASSEMBLY
10	H-2120	1	VENT CAP	20	F-1009-01	4	1/4" FLAT WASHER

WIRE HARNESS & RELATED PARTS



REF NO.	PART NO.	QTY.	DESCRIPTION
1	E-5812	1	BATTERY, ON 23 H.P. ENGINES AND SMALLER
	E-6271	1	BATTERY, ON 25 H.P. ENGINES AND LARGER
2	E-5878	1	HOUR METER
3	E-6054	1	SOLENOID
4	E-5873	1	START SWITCH
5	E-6296	1	CLUTCH SWITCH
6	F-1567	2	5/16-24 NUT
7	F-1015-02	2	1/4-20 X 5/8" GR. 5
8	E-6369	1	RETAINER CLIP
9	E-6297	1	BRAKE SWITCH
10	E-6074	1	SWITCH, SPDT MINI
11	F-1396	2	4-40 X 3/4 SCREW
12	F-1621	2	STAR WASHER
13	F-1538	2	1/4-20 X 3/4" GR. 5
14	F-1158	5	1/4-20 LOCK NUT
15	F-1009-01	4	1/4" FLAT WASHER
16	659-048P	1	BATTERY HOLD DOWN
17	E-6340	1	WIRE HARNESS
18	F-1535	2	6-32 LOCK NUT
	E-6281	1	COVER (KEY SWITCH)
			-NOT SHOWN-
	E-6307	1	OIL PRESSURE SWITCH (KAWASAKI)
			-NOT SHOWN-