

Repair Parts Manual

COUNTRY **CLIPPER**®

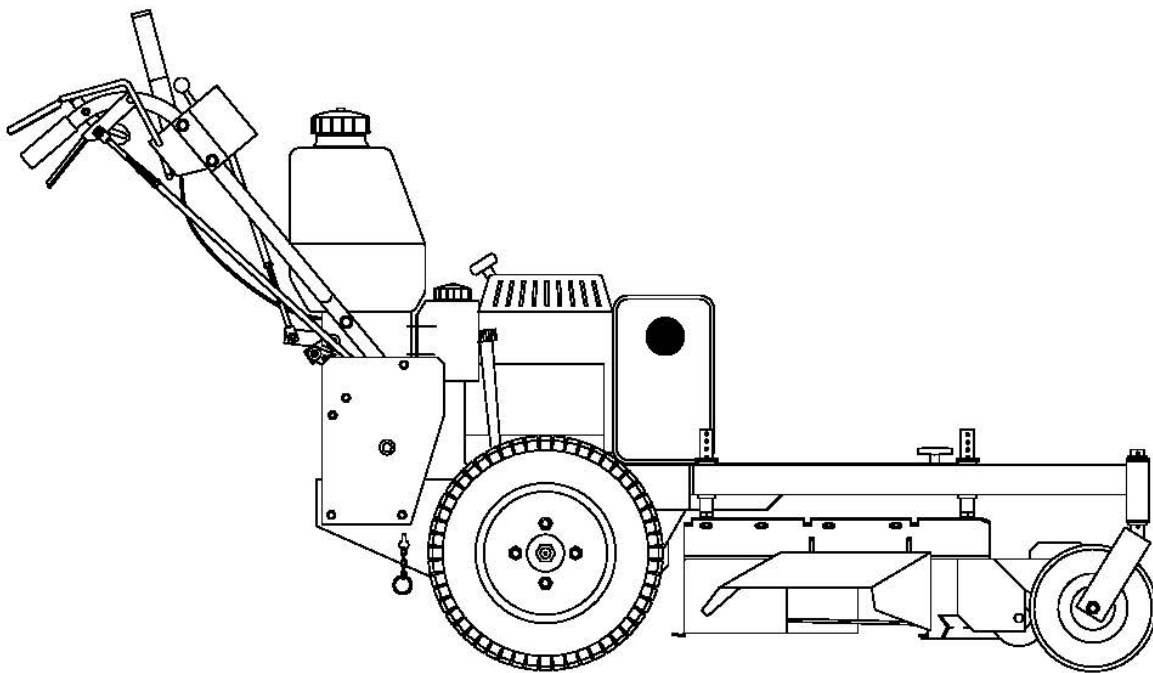
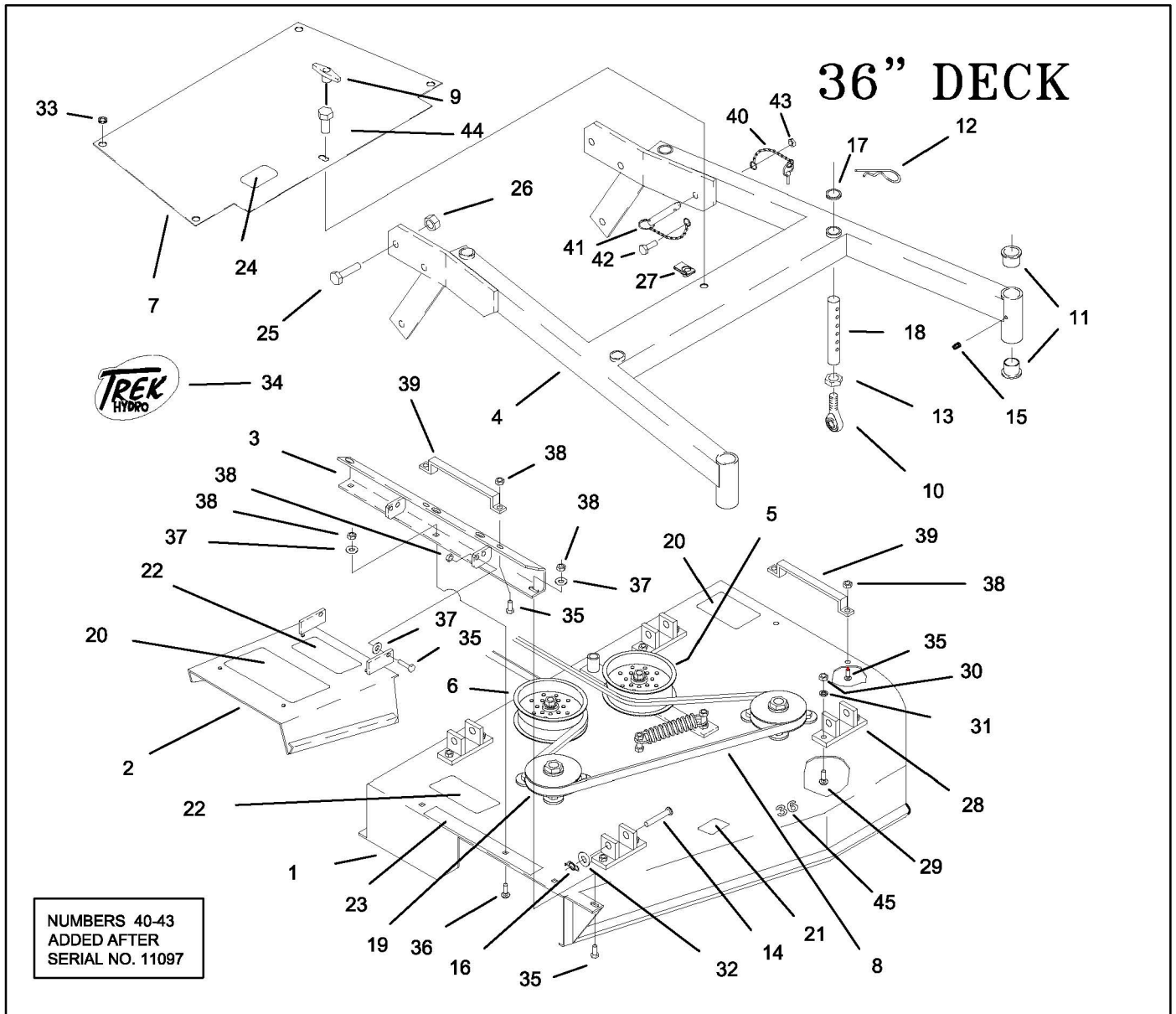




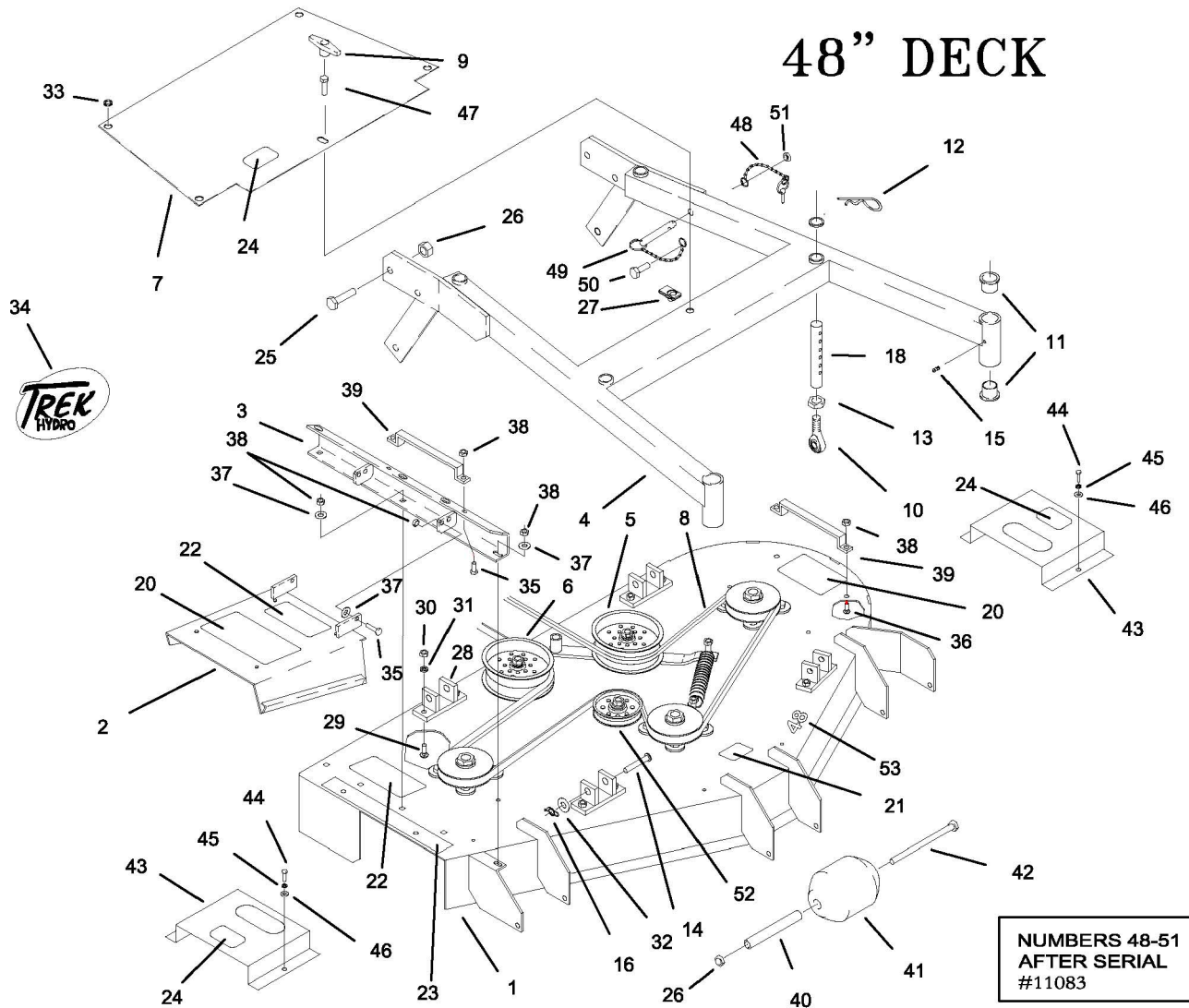
TABLE OF CONTENTS

DESCRIPTION	PAGE NO.
36" DECK AND RELATED PARTS _____	1
48" DECK AND RELATED PARTS _____	2
CASTER WHEEL ASSEMBLY _____	3
DECK SPINDLE ASSEMBLY _____	4
DECK IDLERS AND RELATED PARTS _____	5
DRIVE LINE PARTS _____	6
STEEL HYDRAULIC LINES _____	7
DRIVE IDLER AND RELATED PARTS _____	8
LINKAGE PARTS _____	9
TANKS AND HOSES _____	10
HANDLES _____	11
SPEED CONTROL _____	12
WIRING HARNESS AND CONSOLE PARTS _____	13



REF NO.	PART NO.	QTY.	DESCRIPTION	REF NO.	PART NO.	QTY.	DESCRIPTION
1	649-050A	1	36" DECK WLDT. W/DECALS	23	P-10122	1	DECAL, MISSING CHUTE
2	649-054A	1	CHUTE W/DECALS	24	P-10935	1	DECAL, ROTATING
3	649-009W	1	OUTLET STIFFENER	25	F-1386	6	1/2-13 X 1-1/4 GR. 5
4	649-031W	1	36" DECK FRAME WLDT.	26	F-1005-05	6	1/2" LOCK NUT
5	-----	1	SINGLE IDLER ASS'Y (SEE PAGE 5)	27	F-1860	1	U-NUT, 5/16"
6	-----	1	DRIVE IDLER ASS'Y (SEE PAGE 5)	28	649-020W	4	DECK HANGER WLDT.
7	649-052A	1	36" BELT COVER W/DECALS	29	F-1672	8	CARRIAGE BOLT, 3/8-16 X 1-1/4"
8	D-3684	1	BELT, A-84 (SPECIAL) KEVLAR	30	F-1239	8	3/8" LOCK NUT
9	F-1921	1	"T" HANDLE KNOB	31	F-1019-03	8	3/8" LOCK WASHER
10	H-2349	4	ROD END BALL JOINT	32	F-1009-05	4	1/2" FLAT WASHER
11	H-2350	4	OILITE FLANGED BUSHING	33	E-5038-01	4	GROMMET
12	H-2359	4	HAIRPIN COTTER PIN	34	P-11545	1	DECAL, TREK HYDRO
13	F-1462	4	1/2-20 JAM NUT	35	F-1015-15	7	5/16-18 X 1" GR. 5
14	F-1817	4	CLEVIS PIN, 1/2 X 2"	36	F-1671	4	CARRIAGE BOLT, 5/16 X 3/4
15	H-1056	2	GREASE FITTING	37	F-1009-02	6	5/16 FLAT WASHER
16	H-2239	4	1/2" RUE RING	38	F-1125	10	5/16 LOCK NUT
17	649-027P	4	THRUST WASHER	39	649-035P	2	LIFT HANDLE
18	649-028P	4	SHAFT, DECK HANGER	40	F-1835	2	LINCH PIN ASSEMBLY
19	-----	1	SPINDLE ASS'Y (SEE PAGE 4)	41	F-1836	2	CLEVIS PIN ASSEMBLY
20	P-10941	2	DECAL, MULTI-PERL	42	F-1307	2	3/8-16" X 1-1/4", GR.5
21	P-10947	1	DECAL, GREASE	43	F-1005-03	2	3/8 STOVER NUT
22	P-10937	2	DECAL, WARNING	44	F-1110	1	5/16-18 X 1" W/ NYLON PATCH
				45	P-11947	1	DECAL, DECK SIZE 36"

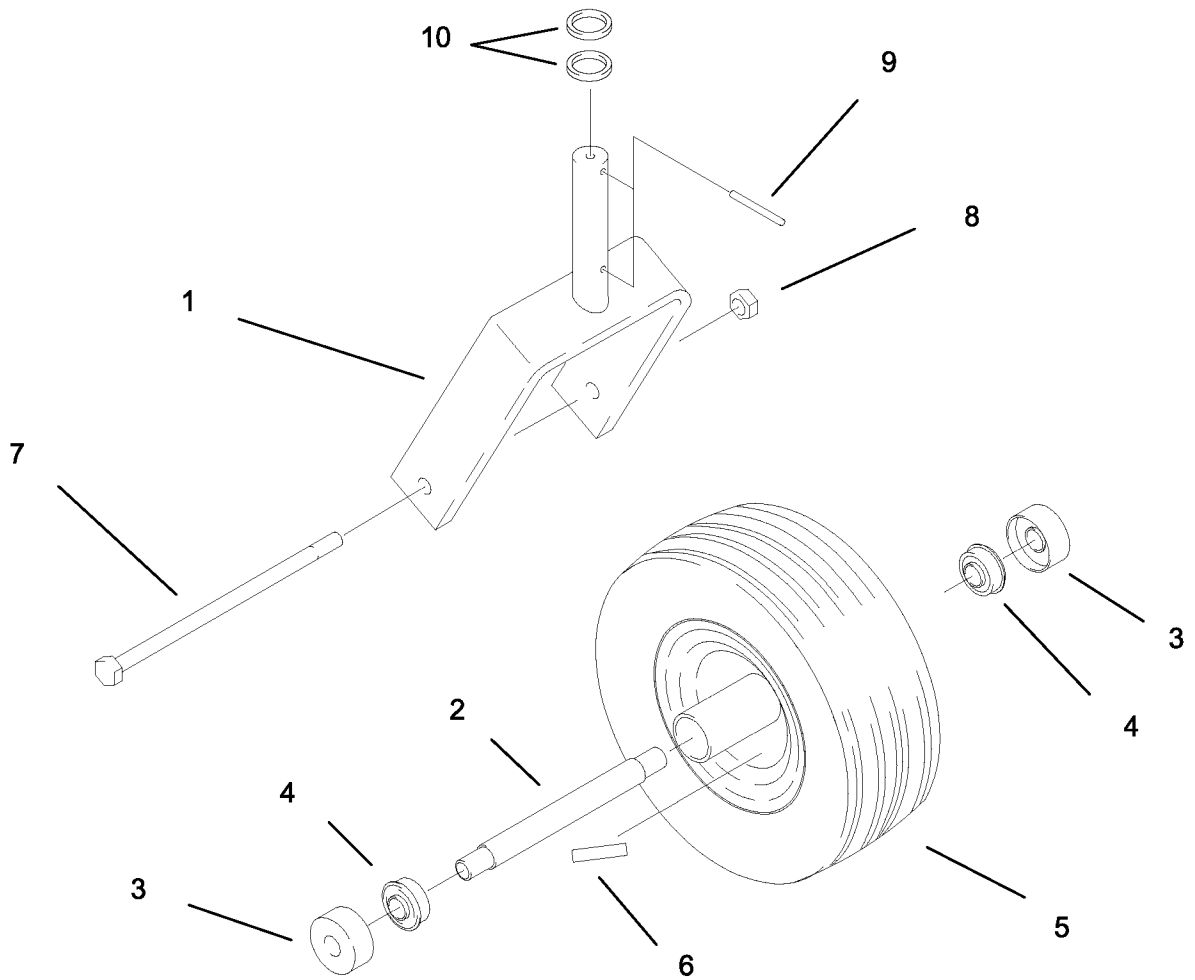
48" DECK



NUMBERS 48-51
AFTER SERIAL
#11083

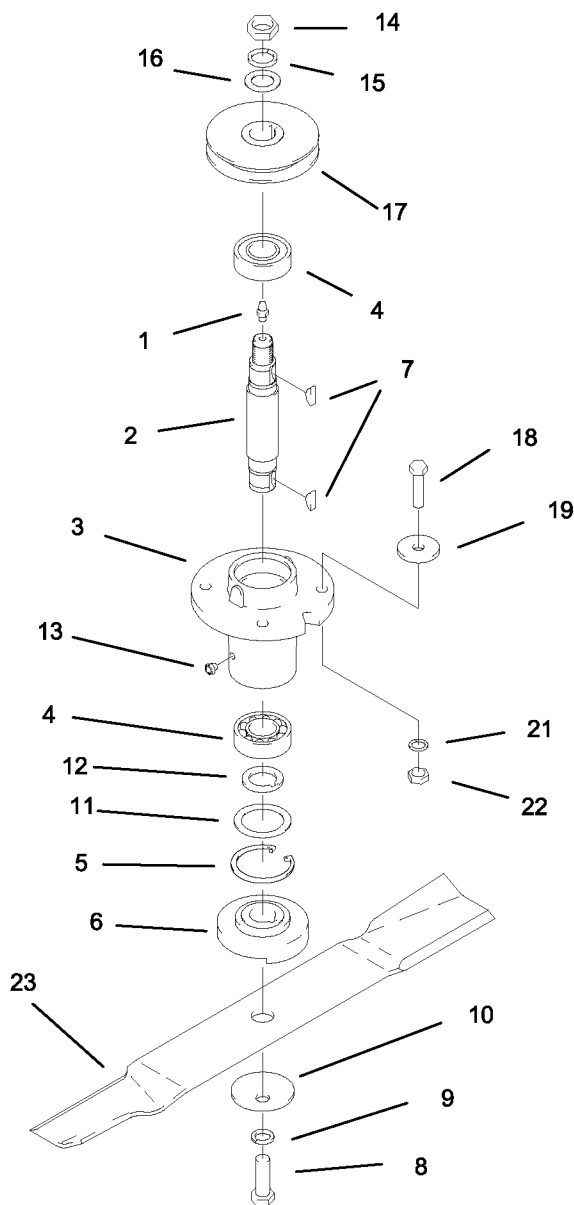
REF NO.	PART NO.	QTY.	DESCRIPTION	REF NO.	PART NO.	QTY.	DESCRIPTION
1	649-051A	1	48" DECK WLDT. W/DECALS	27	F-1860	1	U-NUT, 5/16"
2	649-054A	1	CHUTE W/DECALS	28	649-020W	4	DECK HANGER WLDT.
3	649-012W	1	OUTLET STIFFENER	29	F-1672	8	CARRIAGE BOLT, 3/8-16 X 1-1/4"
4	649-030W	1	48" DECK FRAME WLDT.	30	F-1239	11	3/8" LOCK NUT
5	_____	1	SINGLE IDLER ASSY (SEE PAGE 5)	31	F-1019-03	8	3/8" LOCK WASHER
6	_____	1	DRIVE IDLER ASSY (SEE PAGE 5)	32	F-1009-05	4	1/2" FLAT WASHER
7	649-053A	1	48" BELT COVER W/DECAL	33	E-5038-01	4	GROMMET
8	D-3606	1	BELT, A-120 (SPECIAL) KEVLAR	34	P-11545	1	DECAL, TREK HYDRO
9	F-1921	1	"T" HANDLE KNOB	35	F-1015-15	7	5/16-18 X 1" GR. 5
10	H-2349	4	ROD END BALL JOINT	36	F-1671	4	CARRIAGE BOLT, 5/16 X 3/4
11	H-2350	4	OILITE FLANGED BUSHING	37	F-1009-02	6	5/16 FLAT WASHER
12	H-2359	4	HAIRPIN COTTER PIN	38	F-1125	10	5/16 LOCK NUT
13	F-1462	4	1/2-20 JAM NUT	39	649-035P	2	LIFT HANDLE
14	F-1817	4	CLEVIS PIN, 1/2 X 2"	40	609-183P	3	WHEEL BUSHING
15	H-1056	2	GREASE FITTING	41	H-1948	3	ROLLER, 3-3/4 DIA. X 4-13/16
16	H-2239	4	1/2" RUE RING	42	F-1741	3	3/8-16 X 6" GR. 5
17	649-027P	4	THRUST WASHER	43	609-080P	2	BELT COVER
18	649-028P	4	SHAFT, DECK HANGER	44	F-1538	4	1/4-20 X 3/4 GR. 5
19	_____	1	SPINDLE ASSY (SEE PAGE 4)	45	F-1019-01	4	1/4" LOCK WASHER
20	P-10941	2	DECAL, MULTI-PERL	46	F-1009-01	4	1/4" FLAT WASHER
21	P-10947	1	DECAL, GREASE	47	F-1110	1	5/16-18 X 1" W/ NYLON PATCH
22	P-10937	2	DECAL, WARNING	48	F-1835	2	LINCH PIN ASSEMBLY
23	P-10122	1	DECAL, MISSING CHUTE	49	F-1836	2	CLEVIS PIN ASSEMBLY
24	P-10935	3	DECAL, ROTATING	50	F-1307	2	3/8-16 X 1-1/4", GR. 5
25	F-1386	6	1/2-13 X 1-1/4 GR. 5	51	F-1005-03	2	3/8 STOVER NUT
26	F-1239	9	3/8" LOCK NUT	52	_____	1	IDLER ASSEMBLY (SEE PAGE 5)
				53	P-11950	1	DECAL, DECK SIZE 48"

CASTER WHEEL ASSEMBLY



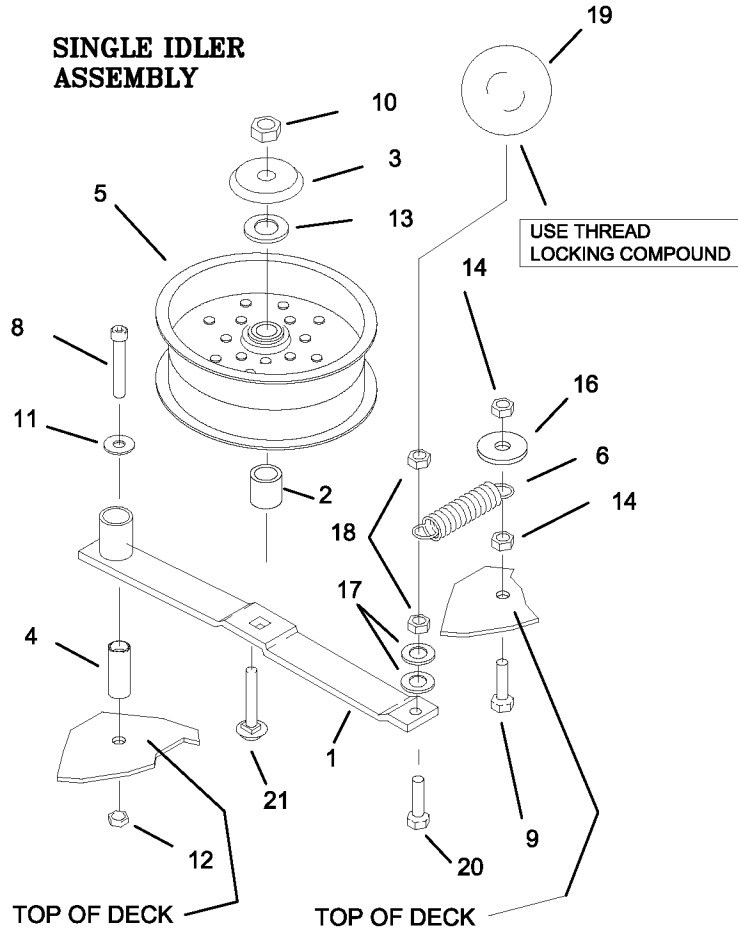
REF NO.	PART NO.	QTY.	DESCRIPTION
1	649-018W	2	CASTER WELDMENT
2	622-121P	2	BEARING SPACER
3	611-135P	4	BEARING SHIELD
4	D-3432	4	BEARING
5	D-3679	2	TIRE-WHEEL ASSEMBLY
6	P-10877	2	DECAL, TIRE PRESSURE
7	F-1659	2	1/2-13 X 5-1/2" GR. 5 BOLT BOLT
8	F-1005-05	2	1/2-13 LOCK NUT
9	F-1922	4	3/16" SPIRAL ROLL PIN
10	649-027P	4	THRUST WASHER

DECK SPINDLE ASSEMBLY

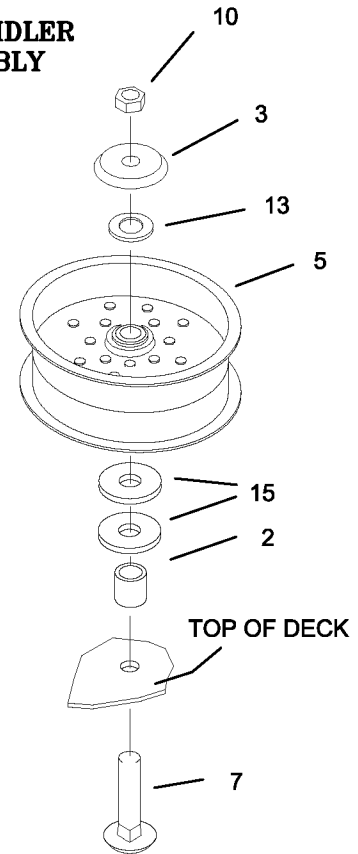


REF NO.	PART NO.	QTY.	DESCRIPTION	REF NO.	PART NO.	QTY.	DESCRIPTION
-	609-045A	-	SPINDLE ASSEMBLY	16	F-1510	1	3/4" WASHER, FLAT STD.
1	H-1056	1	GREASE FITTING	17	609-155P	-	PULLEY, 1 GROOVE 4"
2	609-162P	1	SPINDLE SHAFT	18	F-1572	4	3/8-24 X 1-1/2" HHCS GR. 5
3	609-223P	1	SPINDLE HOUSING	19	609-034P	4	SPINDLE SPACER REINFORCE.
4	D-3058	2	BEARING, #6205-2RS	-	-	-	-
5	H-1893	1	SNAP RING INT. 52MM	21	F-1019-03	4	3/8" LOCK WASHER
6	609-152P	1	BLADE SPACER	22	F-1573	4	3/8-24 LOCKNUT, M-F
7	D-1004-02	2	KEY, WOODRUF, 1/4 X 3/4	23	H-2246	1	BLADE, HIGH L, 18-3/8 CUT 36"
8	F-1526	1	1/2-13 X 1-1/2" HHCS GR. 5	-	H-1714	-	BLADE, HIGH L, 17" CUT 48"
9	F-1464	1	1/2" LOCK WASHER				
10	F-1507	1	WASHER, 1/2" CUPPED				
11	609-151P	1	WASHER, SEAL				
12	609-073P	1	ARBOR SPACER				
13	H-2066	1	GREASE VENT 5 LBS.				
14	F-1461	1	3/4-16 NUT, HEX JAM				
15	F-1463	1	3/4" LOCK WASHER				

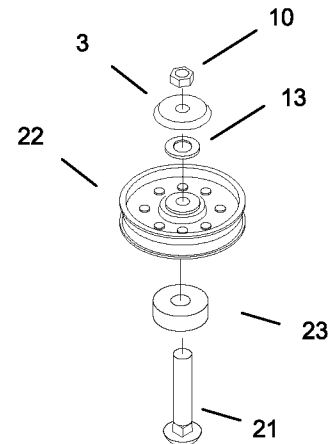
DECK IDLERS AND RELATED PARTS



DRIVE IDLER ASSEMBLY

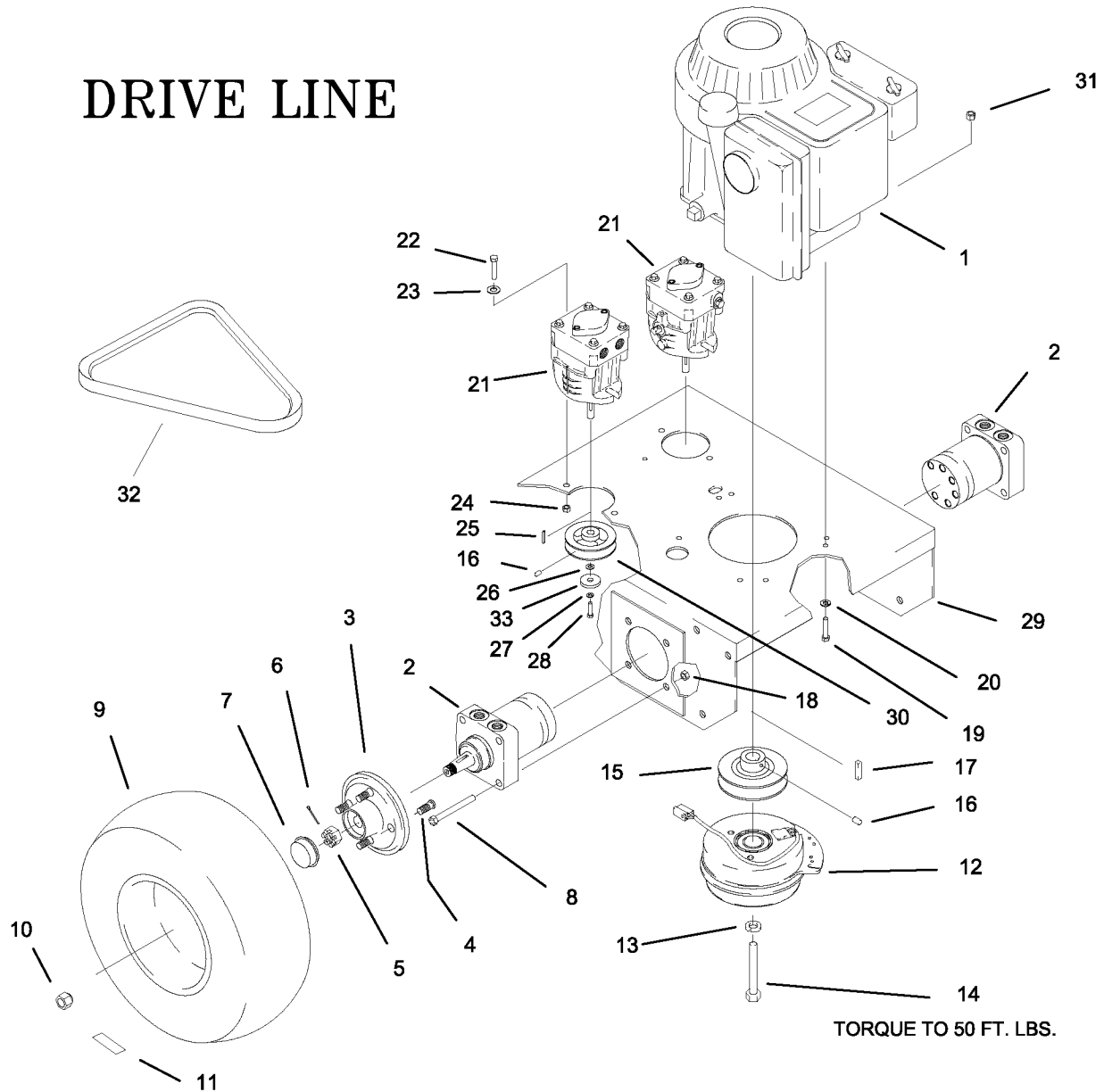


IDLER ASSEMBLY



REF NO.	PART NO.	QTY.	DESCRIPTION	REF NO.	PART NO.	QTY.	DESCRIPTION
1	637-025W	1	SINGLE IDLER ARM	13	F-1521	3	1/2" FLAT WASHER, NARROW
2	649-048P	2	SPACER, IDLER	14	F-1573	2	3/8" LOCK NUT
3	620-201P	3	BEARING CAP	15	F-1009-05	2	1/2" FLAT WASHER
4	621-103P	1	PIN	16	609-034P	1	SPINDLE SPACER WASHER
5	D-3683	2	PULLEY, FLAT IDLER, 2" X 5" DIA.	17	F-1009-03	2	3/8" FLAT WASHER
6	H-2092	1	SPRING, 1-1/2" X 5"	18	F-1005-03	2	3/8" STOVER NUT
7	F-1927	1	CARR. BOLT, 1/2-13 X 2-3/4" GR. 5	19	H-2130	1	BALL
8	F-1800	1	5/16-18 SHCS X 2-1/4"	20	F-1015-27	1	3/8-16 X 1 1/2, GR.5
9	F-1574	1	3/8-24 X 1-1/4" GR. 5	21	F-1822	2	CARR. BOLT, 1/2-13 X 2 1/4, GR.5
10	F-1378	3	1/2-13 LOCKNUT	22	D-3338	1	4" FLAT IDLER PULLEY
11	F-1009-02	1	5/16 FLAT WASHER	23	660-037P	1	1/2" THICK SPACER
12	F-1125	1	5/16 LOCK NUT				

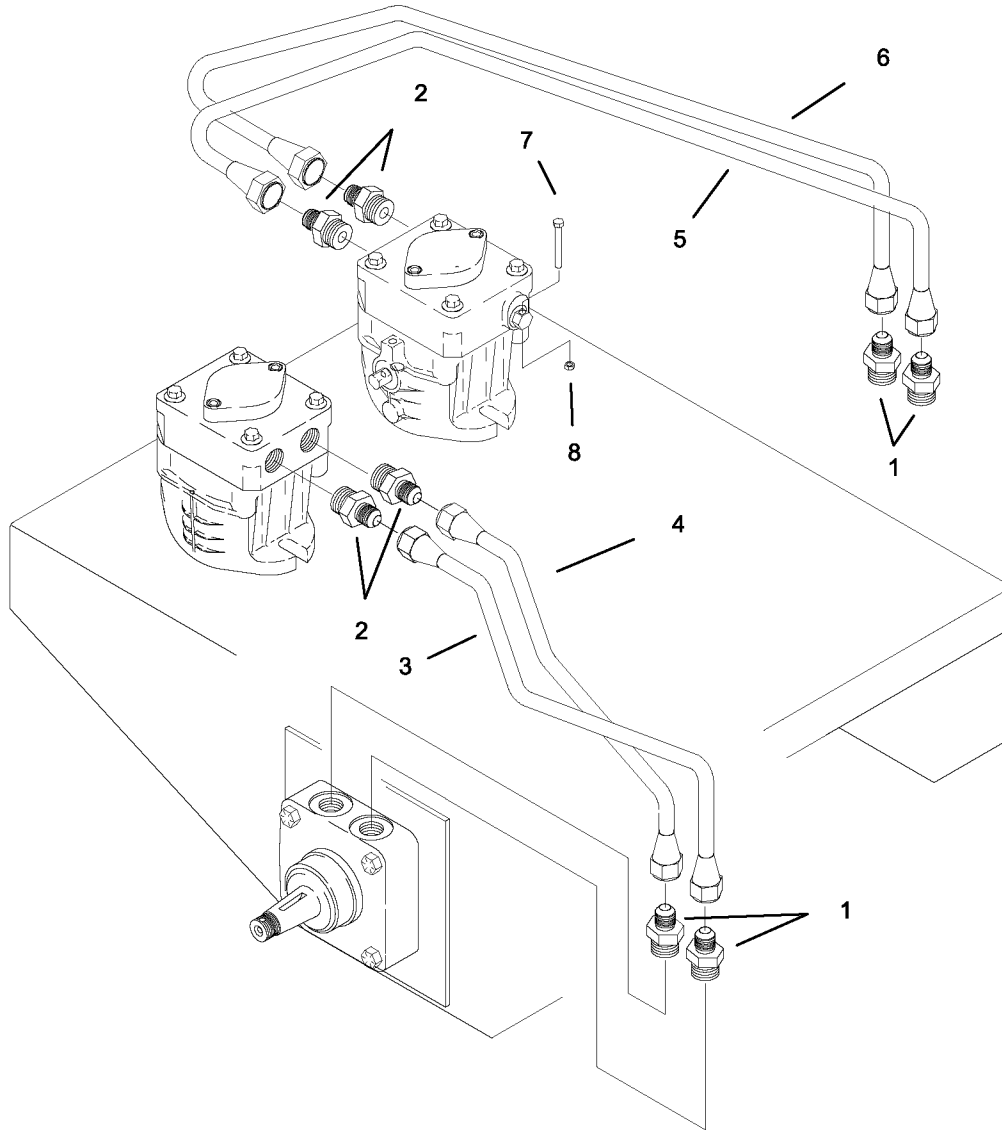
DRIVE LINE



TORQUE TO 50 FT. LBS.

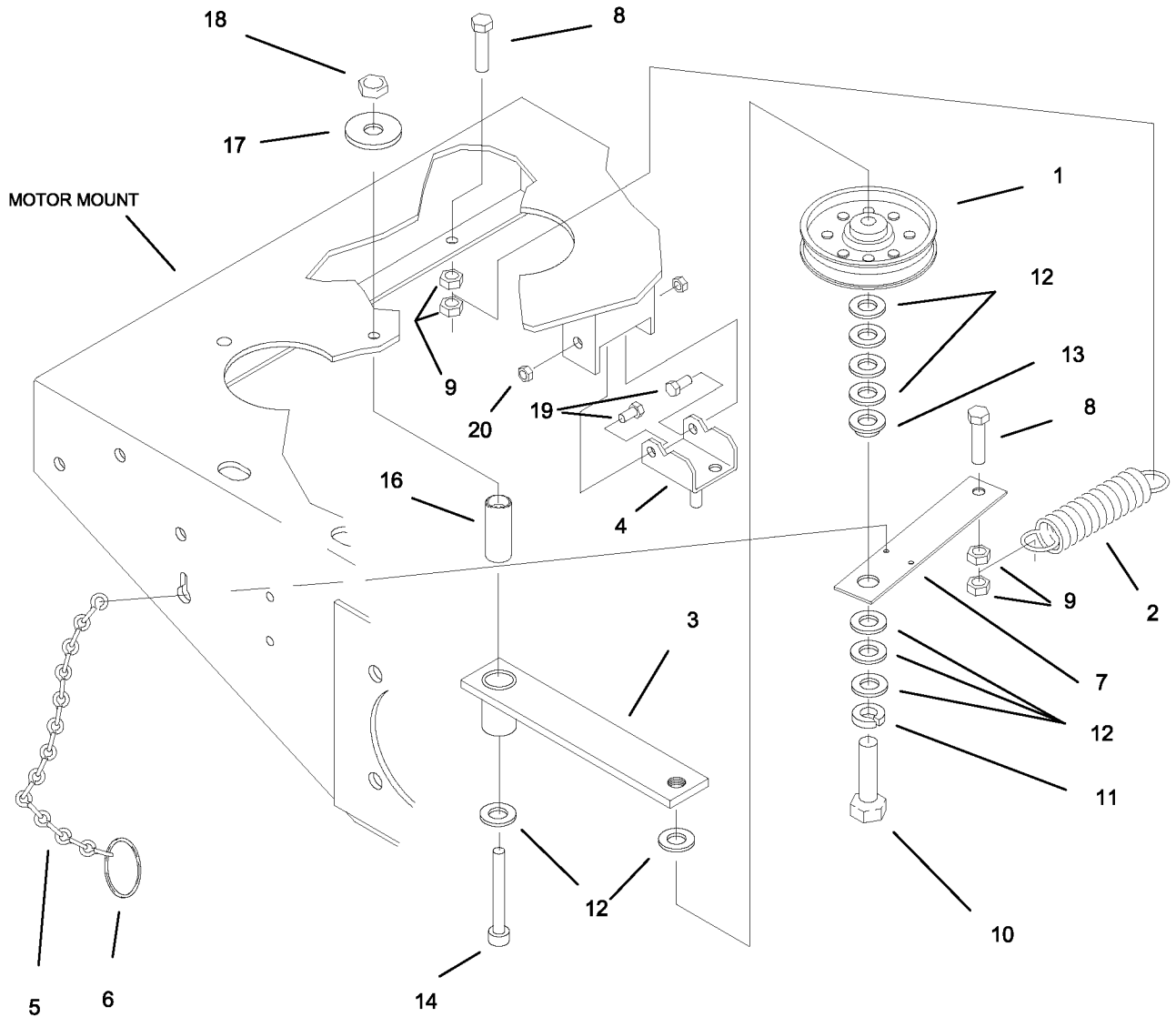
REF NO.	PART NO.	QTY.	DESCRIPTION	REF NO.	PART NO.	QTY.	DESCRIPTION
1	M-5362	1	15 HP. KAWASAKI ENGINE	17	621-113P	1	KEY
-	-	-	-	18	F-1005-05	8	1/2-13 LOCK NUT
2	D-3667	2	WHEEL MOTOR	19	F-1692	4	8 MM X 25 MM BOLT
3	648-052P	2	WHEEL HUB WITH STUDS	-	F-1015-17	4	5/16-18 X 1-1/2" BOLT (15 HP)
4	F-1654	8	WHEEL STUDS, (REPLACEMENT)	20	F-1019-02	4	5/16 LOCK WASHER
5	F-1909	2	NUT, 3/4-1 6 CASTLE NUT	21	D-3685	2	HYDRO. PUMP
6	H-1376	2	COTTER PIN, 1/8 X 1-1/2"	22	F-1307	4	3/8-16 X 1-1/4 GR. 5 BOLT
7	H-1798	2	GREASE CAP	23	F-1009-03	4	3/8 FLAT WASHER
8	F-1664	8	1/2-13 X 2-1/4" GR. 5 BOLT	24	F-1005-03	4	3/8 LOCK NUT
9	D-3682	2	WHEEL ASS'Y CARLISLE #10-00935	25	642-113P	2	KEY, 5 MM.
10	F-1499	8	LUG NUT, 1/2-20 X 60 DEG.	26	620-187P	2	WASHER
11	P-10877	2	DECAL, TIRE PRESSURE	27	F-1738	2	5 MM. WASHER
12	E-6317	1	CLUTCH	28	F-1737	2	6 MM. X 16 MM. GR. 5
13	F-1019-04	1	7/16" LOCK WASHER	29	648-042W	1	MOTOR MOUNT
14	F-1529	1	10 MM X 75 MM BOLT	30	647-035P	2	HYDRO PUMP PULLEY
-	F-1904	1	7/16-20 X 2-1/2" BOLT (15 HP)	31	F-1011-02	4	5/16-18 NUT (15 HP)
15	648-037P	1	MOTOR PULLEY	32	D-3671	1	BELT, A-45 SPECIAL
16	F-1228	3	SET SCREW, 1/4 X 1/4	33	F-1736	2	WASHER, .840 X .246 X .125

STEEL HYDRO. LINES



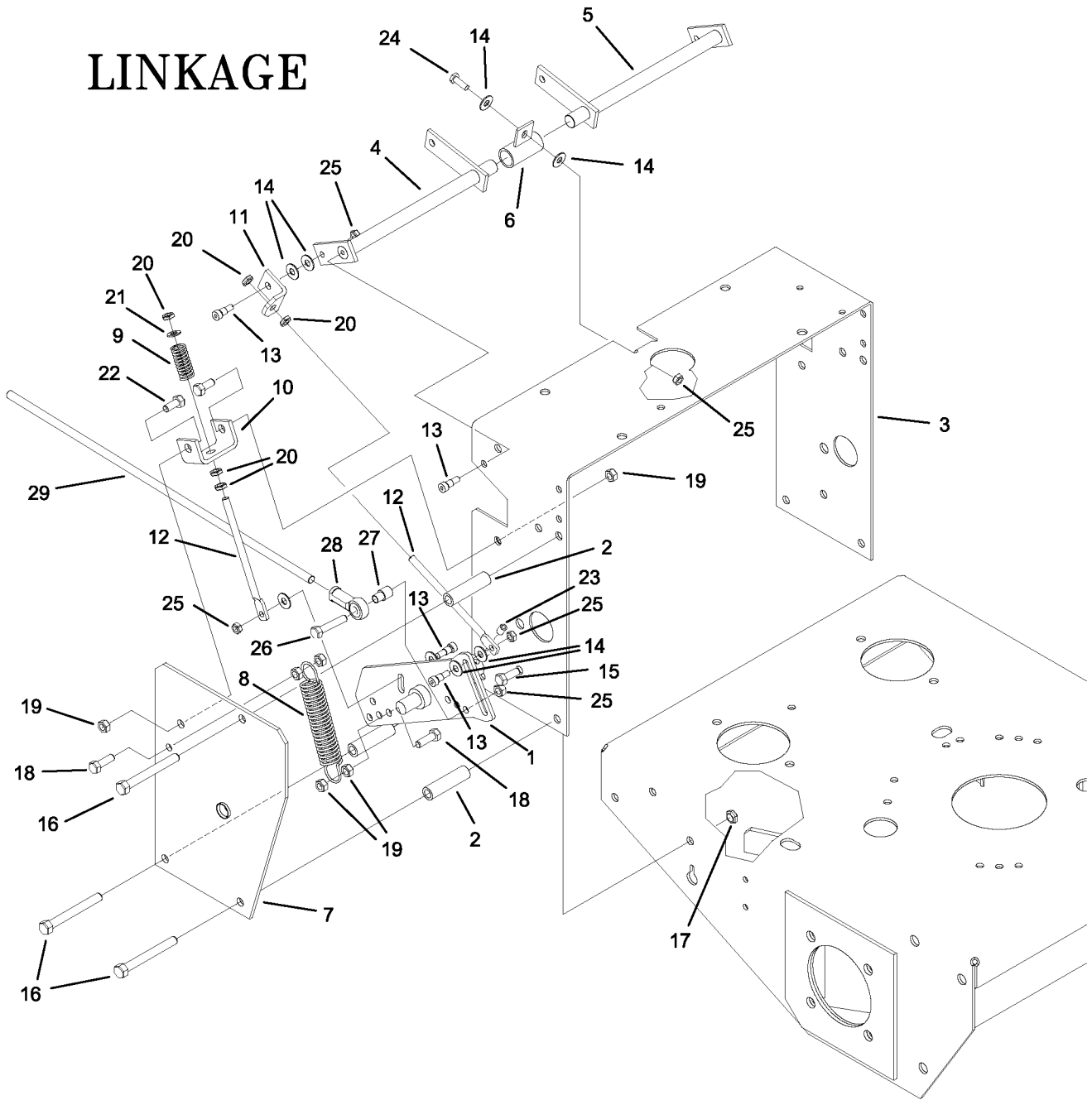
REF NO.	PART NO.	QTY.	DESCRIPTION
1	H-2319	4	FITTING STRAIGHT, 7/8-14
2	H-2357	4	FITTING STRAIGHT, 3/4-16
3	H-2352	1	OIL LINE, RIGHT OUTSIDE
4	H-2353	1	OIL LINE, RIGHT INSIDE
5	H-2354	1	OIL LINE LEFT, INSIDE
6	H-2355	1	OIL LINE LEFT, OUTSIDE
7	F-1077	2	1/4-20 X 2" GR. 5 BOLT (HANDLE)
8	F-1158	2	1/4-20 LOCK NUT

DRIVE IDLER



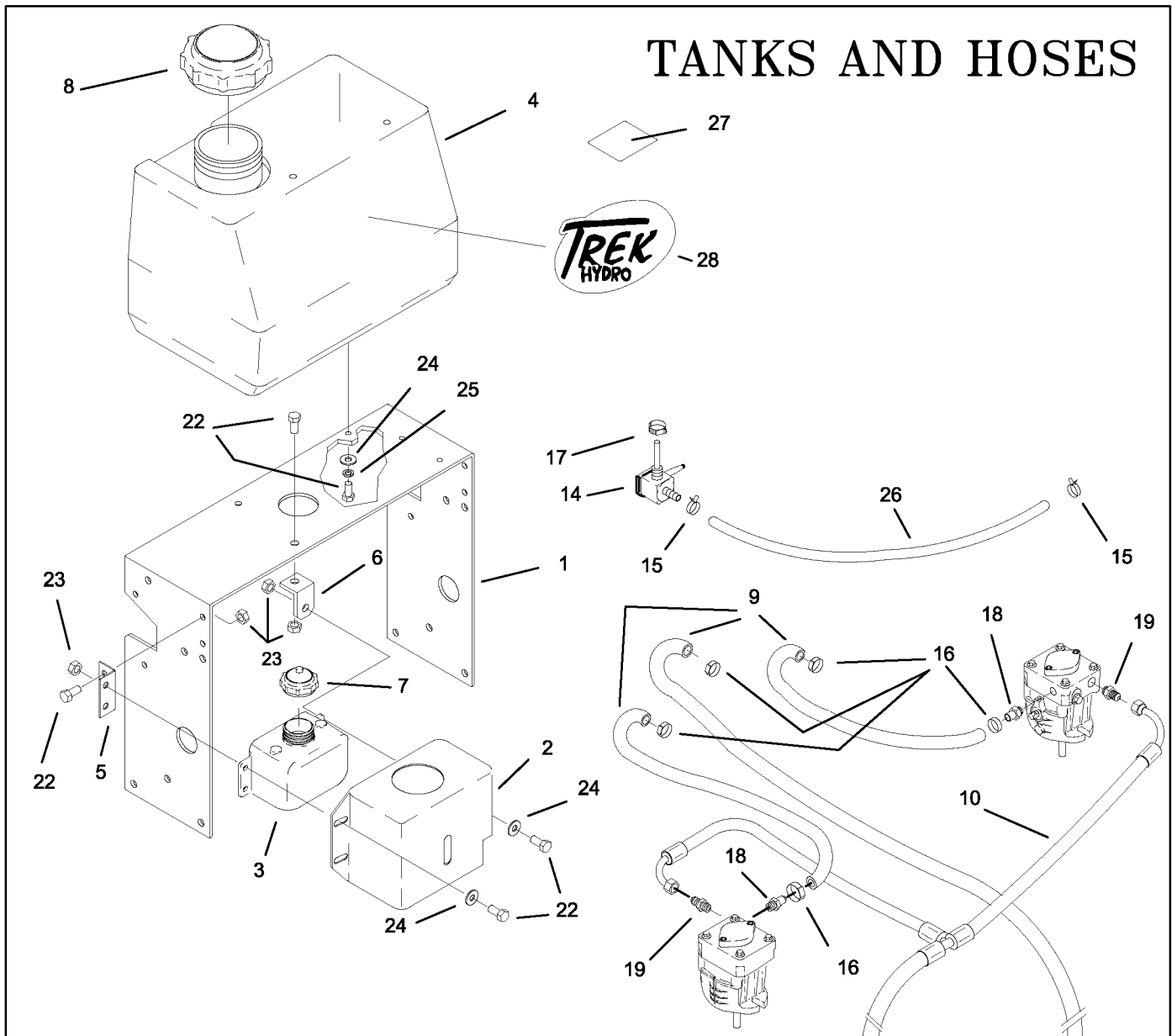
REF NO.	PART NO.	QTY.	DESCRIPTION	REF NO.	PART NO.	QTY.	DESCRIPTION
1	D-3617	1	FLAT IDLER PULLEY	11	F-1464	1	1/2" LOCK WASHER
2	H-2092	1	SPRING	12	F-1521	9	1/2" FLAT WASHER
3	622-167A	1	IDLER ARM ASS'Y	13	622-048P	1	IDLER STAND
4	647-023W	1	CLUTCH STOP	14	F-1800	1	5/16-18 X 2-1/4 SHCS
5	648-049P	1	CHAIN	15	-	-	-
6	H-2345	1	SPLIT RING	16	621-103P	1	MOUNTING PIN
7	648-005P	1	SPRING EXTENSION	17	606-348P	1	WASHER
8	F-1574	2	3/8-24 X 1-1/4 GR.5	18	F-1125	1	5/16 LOCK NUT
9	F-1573	4	3/8-24 LOCK NUT	19	F-1538	2	1/4-20 X 3/4" GR. 5
10	F-1293	1	1/2-13 X 2" GR. 5	20	F-1158	2	1/4" LOCK NUT

LINKAGE



REF NO.	PART NO.	QTY.	DESCRIPTION	REF NO.	PART NO.	QTY.	DESCRIPTION
1	648-073W	1	RIGHT SHIFT ARM	15	F-1005-23	2	3/8-16 X 3/4"
-	648-074W	1	LEFT SHIFT ARM (NOT SHOWN)	16	F-1616	6	3/8-16 X 3-1/4" GR. 5
2	648-003P	6	SPACER	17	F-1005-03	8	3/8-16 LOCK NUT
3	648-018P	1	TANK STANDOFF	18	F-1015-15	4	5/16-18 X 1" GR. 5
4	648-009W	1	SPEED SELECT SHAFT RH.	19	F-1125	12	5/16 LOCK NUT
5	648-010W	1	SPEED SELECT SHAFT LH.	20	F-1917	10	5/16-24 JAM NUT
6	648-040W	1	SPEED CONTROL COUPLER	21	F-1009-02	2	5/16 FLAT WASHER
7	648-028P	2	PLATE, SHIFT ARM GUARD	22	F-1394	4	5/15-18 X 1" GR. 5
8	H-1599	2	SPRING, EXTENSION (4")	23	F-1918	2	SET SCREW, 5/16-18 SQ. HEAD
9	H-2034	2	SPRING, COMPRESSION	24	F-1538	1	1/4-20 X 3/4" GR. 5
10	648-021P	2	REVERSE SPRING ANCHOR	25	F-1158	7	1/4" LOCK NUT
11	648-004P	2	ANGLE, SPEED SELECT	26	F-1015-17	2	5/16-18 X 1-1/2" GR. 5
12	H-2347	4	LINK ROD, 5/16-24 X 6.048"	27	H-2466	2	1/2 X 5/16 SHOULDER WASHER
13	F-1916	8	SHOULDER BOLT, 5/16 X 3/8"	28	H-2503	2	BALL JOINT, 3/8-24 LH
14	F-1009-01	16	1/4" FLAT WASHER	29	H-2562	2	ROD, 3/8-24 RH-LH X 27

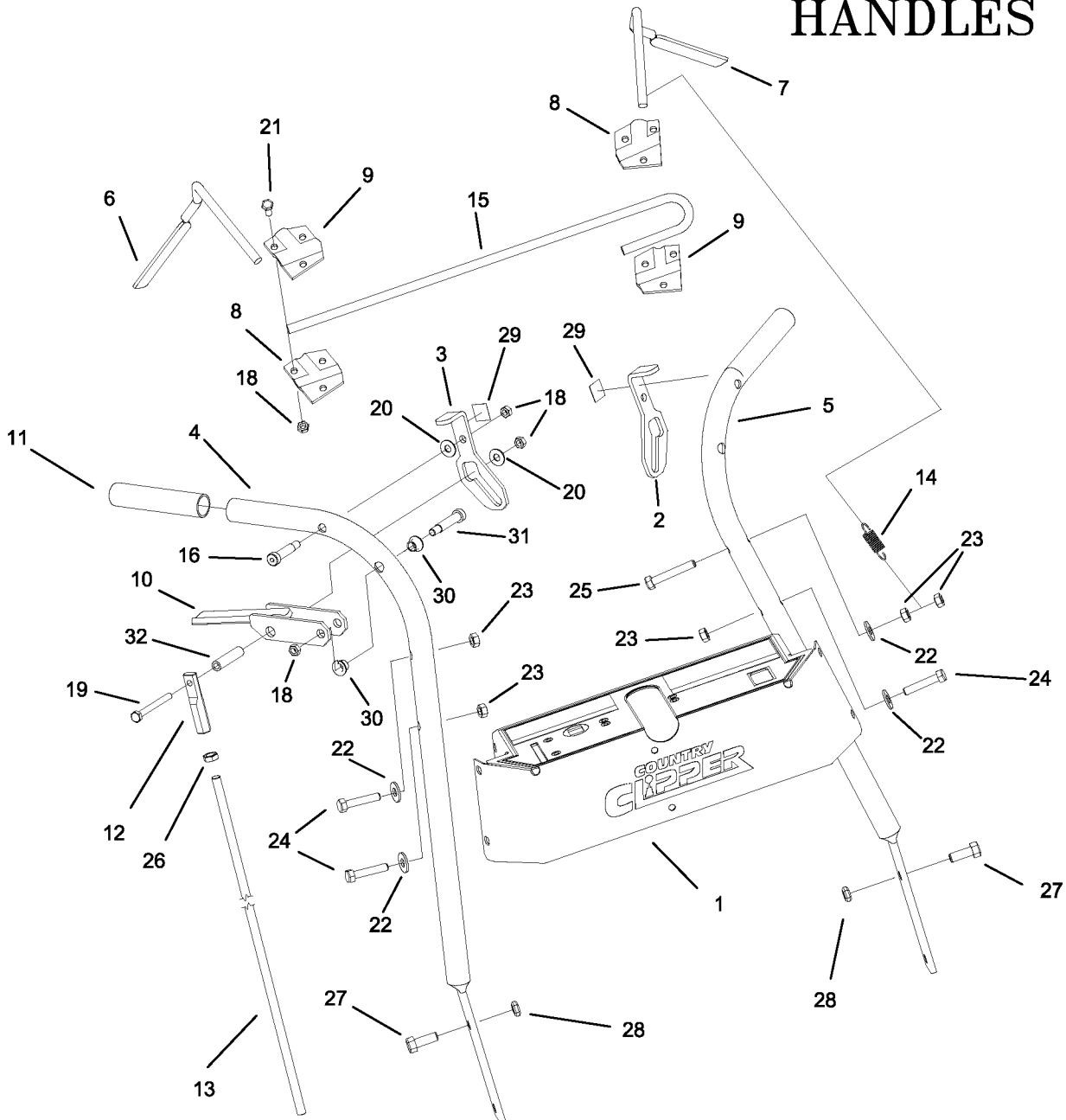
TANKS AND HOSES



REF NO.	PART NO.	QTY.	DESCRIPTION
1	648-018P	1	TANK STAND OFF
2	648-053P	1	OIL TANK COVER
3	H-2230	1	OIL TANK, 2 QUART.
4	H-2348	1	FUEL TANK
5	648-022P	1	OIL TANK MOUNTING ANGLE
6	648-004P	1	SPEED SELECT ANGLE
7	H-2233	1	OIL TANK CAP
8	H-2232	1	FUEL CAP
9	H-2332	3	OIL HOSE, 16"
10	H-2356	1	TEE OIL HOSE
11	H-2026	1	OIL FILTER
12	H-2061	1	FILTER BASE
13	H-1859	2	HOSE BARB
14	H-2360	1	TANK SHUT OFF
15	H-1687	2	FUEL LINE CLAMP
16	H-2282	7	HOSE CLAMP
17	H-1952	1	HOSE CLAMP
18	H-2358	2	HOSE BARB, 3/8 HOSE X 9/16 S.A.E.
19	H-2357	2	FLARE FITTING, STRAIGHT CONN. 3/4"
20	F-1015-05	2	1/4-20 X 1" GR. 5
21	F-1019-01	2	1/4" LOCK WASHER
22	F-1546	6	5/16-18 X 3/4" GR. 5

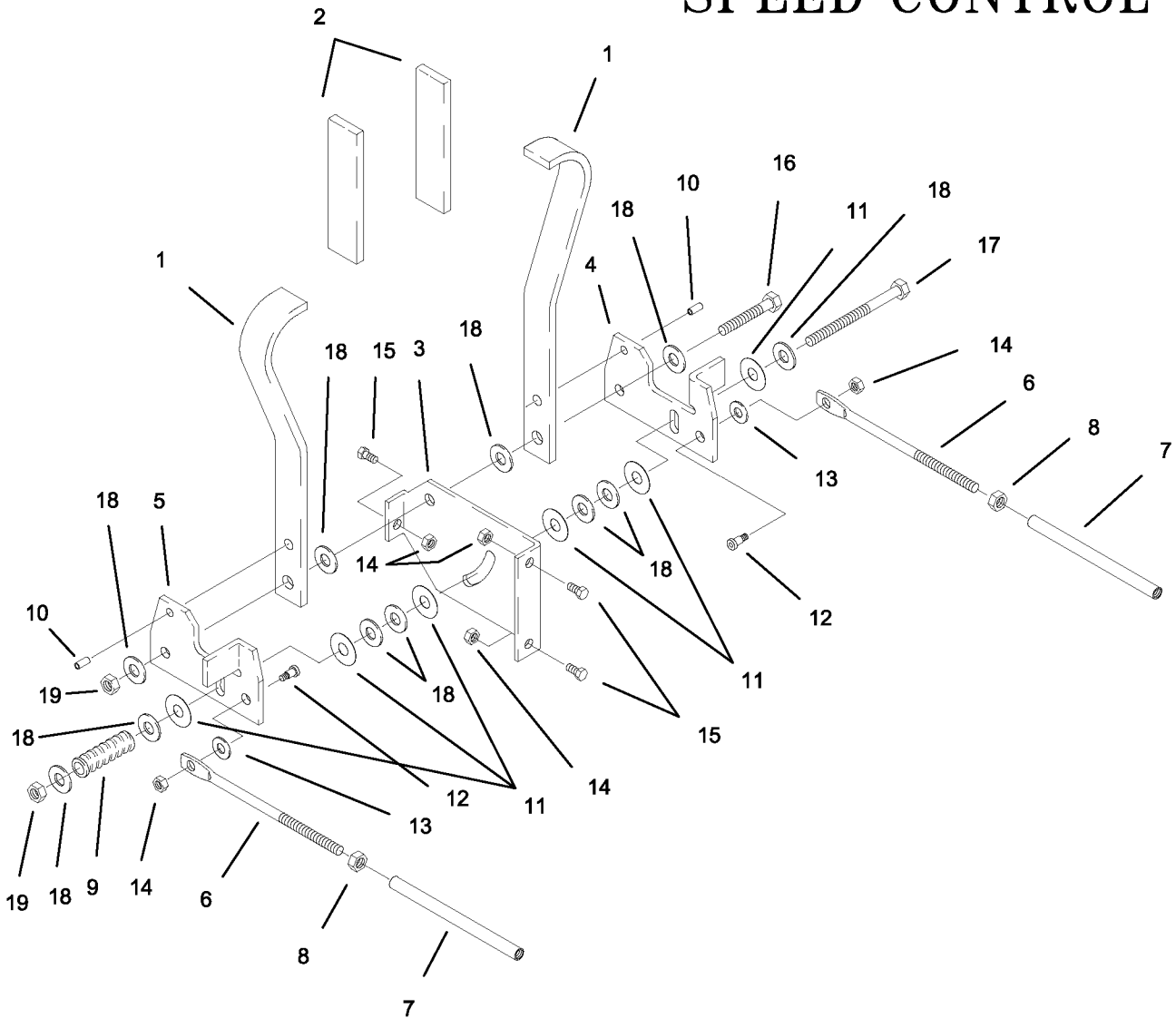
REF NO.	PART NO.	QTY.	DESCRIPTION
23	F-1125	6	5/16 LOCK NUTS
24	F-1009-02	7	5/16 FLAT WASHERS
25	F-1019-02	4	5/16 LOCK WASHER
26	648-062P	1	FUEL LINE, 1/4 DIA. X 24"
27	P-10939	1	DECAL, CAUTION
28	P-11545	1	DECAL, TREK HYDRO

HANDLES



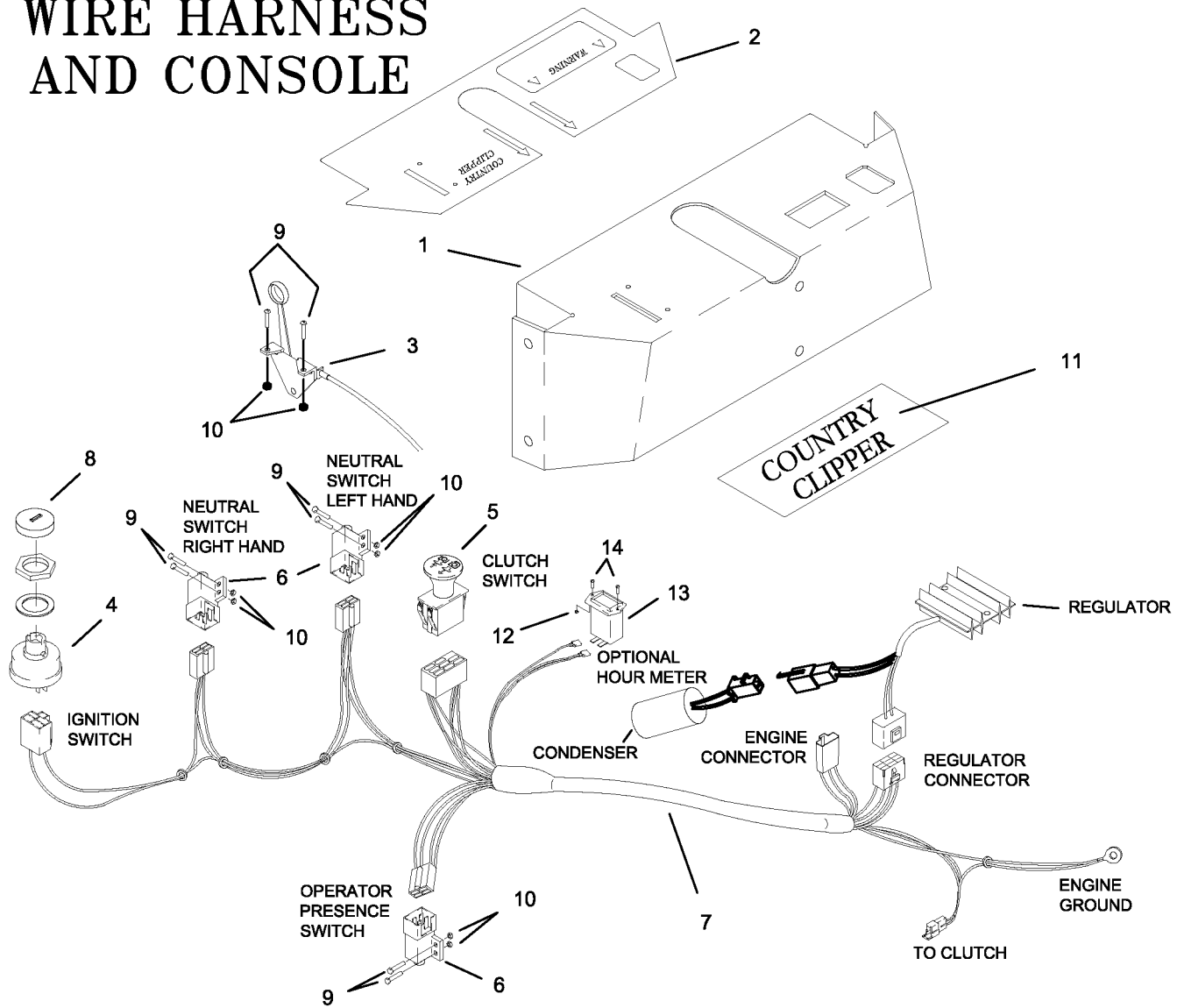
REF NO.	PART NO.	QTY.	DESCRIPTION	REF NO.	PART NO.	QTY.	DESCRIPTION
1	-	-	SEE (PAGE 13)	18	F-1158	12	1/4-20 LOCK NUT
2	648-069P	1	NEUTRAL LATCH, LH	19	F-1703	2	1/4-20 x 2-1/2" GR 5
3	648-070P	1	NEUTRAL LATCH, RH	20	F-1009-01	6	1/4" FLAT WASHER
4	648-071P	1	HANDLE BAR, RH	21	F-1015-02	6	1/4-20 X 5/8" GR. 5
5	648-072P	1	HANDLE BAR, LH	22	F-1009-02	4	5/16 FLAT WASHER
6	648-044P	1	OPERATOR PRESENCE BAR, RH	23	F-1125	5	5/16 LOCK NUT
7	648-045P	1	OPERATOR PRESENCE BAR, LH	24	F-1006-17	3	5/16-18 X 1-1/2 GR. 5
8	648-056P	2	CLAMP, RIGHT REAR	25	F-1015-19	1	5/16-18 X 2 GR. 5
9	648-057P	2	CLAMP, RIGHT FRONT	26	F-1917	2	5/16-24 JAM NUT
10	648-066W	2	HANDLE WLDT.	27	F-1558	4	3/8-16 X 7/8 GR. 5
11	H-2361	2	GRIP, .950 ID. X 4-1/2" VINYL	28	F-1005-03	4	3/8-16 LOCK NUT
12	H-2563	2	LINK ROD, 5/16-24 X 6.048	29	P-11543	2	DECAL, NEUTRAL LATCH
13	H-2562	2	STEERING TUBE	30	D-3803	4	DU FLANGED BEARING 3/8
14	H-2363	1	SPRING, EXTENSION	31	F-2017	2	3/8 X 1-1/2" SHOULDER BOLT, PLT
15	648-055P	1	OPER. PRESENCE, CROSS SHAFT	32	648-075P	2	SPACER 7/16 X 1-13/16
16	F-2018	2	SCREW, 1/4-20 X 1-3/4 PH. HEAD				
17	F-1920	2	SHLDR BOLT, 5/16 DIA. X 1-3/4				

SPEED CONTROL



REF NO.	PART NO.	QTY.	DESCRIPTION
1	648-020P	2	SPEED HANDLE
2	H-2362	2	GRIP, 1/4 X 1" VINYL
3	648-019P	1	SPEED ADJUST PLATE
4	648-026P	1	SPEED PLATE, LH.
5	648-027P	1	SPEED PLATE, HR.
6	H-2347	2	LINK ROD, 5/16-24 X 6.048
7	648-038P	2	SPEED TUBE
8	F-1917	2	5/16-24 JAM NUT
9	H-2090	1	SPRING, COMPRESSION (CENTURY)
10	F-1532	2	ROLL PIN, 1/4 DIA. X 1/2" LONG
11	F-1923	6	WASHER, PHENOLIC
12	F-1916	2	SHOULDER BOLT, 5/16 X 3/8 LONG
13	F-1009-01	2	1/4" FLAT WASHER
14	F-1158	3	1/4" LOCK NUT
15	F-1709	3	1/4-20 X 1/2" GR. 5
16	F-1005-18	1	5/16-18 X 1-3/4" GR. 5
17	F-1544	1	5/16-18 X 3" GR. 5
18	F-1009-02	11	5/16 FLAT WASHER
19	F-1125	2	5/16 LOCK NUT

WIRE HARNESS AND CONSOLE



REF NO.	PART NO.	QTY.	DESCRIPTION
1	648-015P	1	CONTROL PANEL
-	648-063A	-	CONTROL PANEL W/DECAL, (HYDRO)
2	P-11544	1	DECAL, CONTROL PANEL, (HYDRO)
3	H-2371	1	THROTTLE CABLE (15 HP)
4	E-5873	1	START SWITCH
5	E-6296	1	CLUTCH SWITCH
6	E-6297	3	PLUNGER SWITCH
7	E-6323	1	WIRE HARNESS (15 HP)
8	E-6281	1	BEZEL
9	F-1022-26	6	MACHINE SCREW 10-32 X 5/8"
10	F-1448	6	NUT 10-32
11	P-11566	1	DECAL, COUNTRY CLIPPER
12	F-1535	2	6-32 LOCK NUT
13	E-5878	1	HOUR METER, (OPTIONAL)
14	F-1054	2	6-32 X 5/8" SCREW