

REPAIR PARTS MANUAL

for

COUNTRY CLIPPER[®]

JAZZEE[™] SR200

JAZZEE[™] SR300
TWO

JAZZEE[™] SR350
PRO



COUNTRY CLIPPER
"JAZEE "
"JAZEE TWO"
AND
"JAZEE PRO "
ZERO TURN RADIUS MOWER

TABLE OF CONTENTS

PAGE.... CONTENTS

SECTION 1 – MOWER DECKS AND RELATED PARTS

- 1-1. . . . SINGLE IDLER STYLE DECK ASSEMBLY
- 1-2. . . . DOUBLE IDLER STYLE DECK ASSEMBLY
- 1-3 . . . DECK SPINDLE ASSEMBLY
- 1-4 . . . SINGLE IDLER STYLE DRIVE BELT IDLER & RELATED PARTS
- 1-5 . . . DOUBLE IDLER STYLE DRIVE BELT IDLER & RELATED PARTS
- 1-6. . . . LIFT HANDLE ASSEMBLY & RELATED PARTS
- 1-7LIFT ASSEMBLY & RELATED PARTS
- 1-8. . . . TRANSMISSION IDLERS & RELATED PARTS

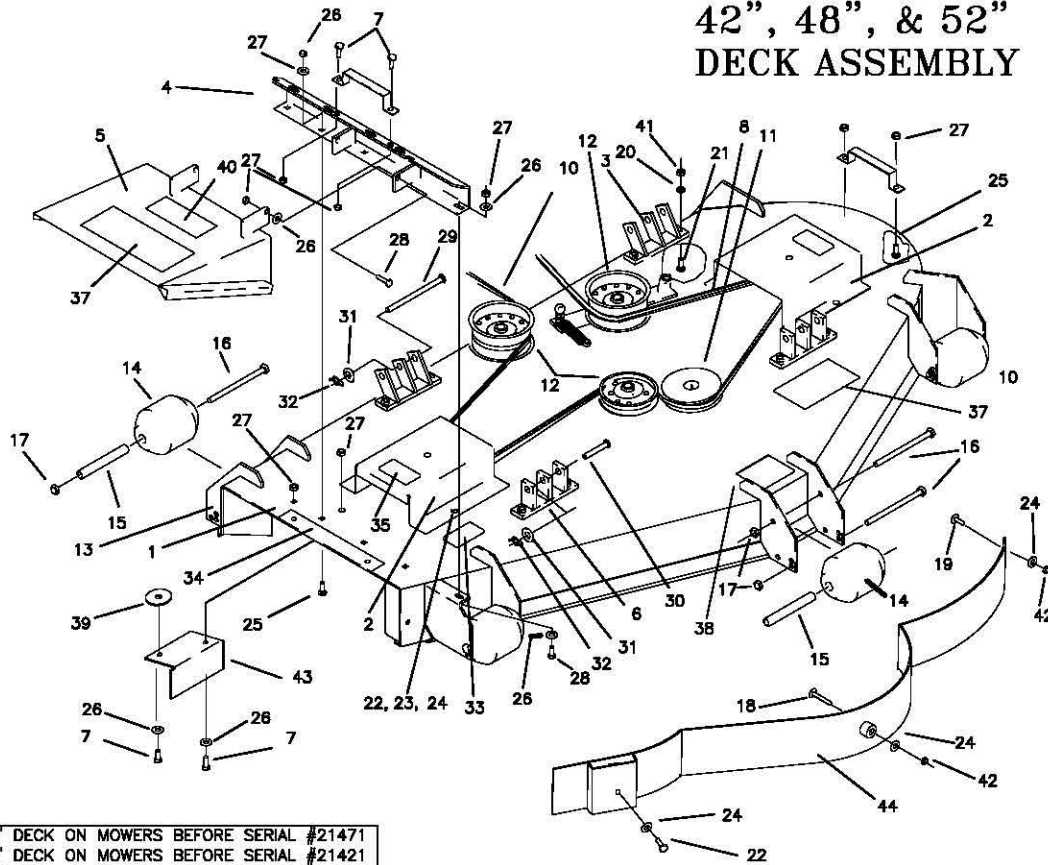
SECTION 2 –TRACTOR FRAME AND RELATED PARTS

- 2-9. . . . CASTER WHEEL ASSEMBLY
- 2-10. . . .FRAME SIDES & RELATED PARTS
- 2-11. . . .FRAME SIDES & RELATED PARTS SR350
- 2-12. . . .FENDER ASSEMBLY
- 2-13. . . .SEAT, FOOT DECK & RELATED PARTS

SECTION 3 –TRACTOR DRIVE AND RELATED PARTS

- 3-14. . . .FUEL TANK ASSEMBLY
- 3-15. . . .JOYSTICK STEERING CONTROL & RELATED PARTS
- 3-16. . . .JOYSTICK STEERING CONTROL & RELATED PARTS (continued) (1/4" LINKAGE)
- 3-17. . . .JOYSTICK STEERING CONTROL & RELATED PARTS (continued) (3/8" LINKAGE)
- 3-18. . . .JOYSTICK STEERING CONTROL & RELATED PARTS SR200
- 3-19. . . .RIGHT HAND STEERING CONTROL (TWIN STICK)
- 3-20. . . .LEFT HAND STEERING CONTROL (TWIN STICK)
- 3-21. . . .PARKING BRAKE ASSEMBLY & RELATED PARTS
- 3-22. . . .PARKING BRAKE ASSEMBLY & RELATED PARTS SR200
- 3-23. . . .MOTOR ASSEMBLY & RELATED PARTS, JAZEE
- 3-24. . . .MOTOR ASSEMBLY & RELATED PARTS, JAZEE SR200
- 3-25. . . .MOTOR ASSEMBLY & RELATED PARTS, JAZEE TWO AND JAZEE PRO
- 3-26. . . .WIRE HARNESS & RELATED PARTS

42", 48", & 52" DECK ASSEMBLY

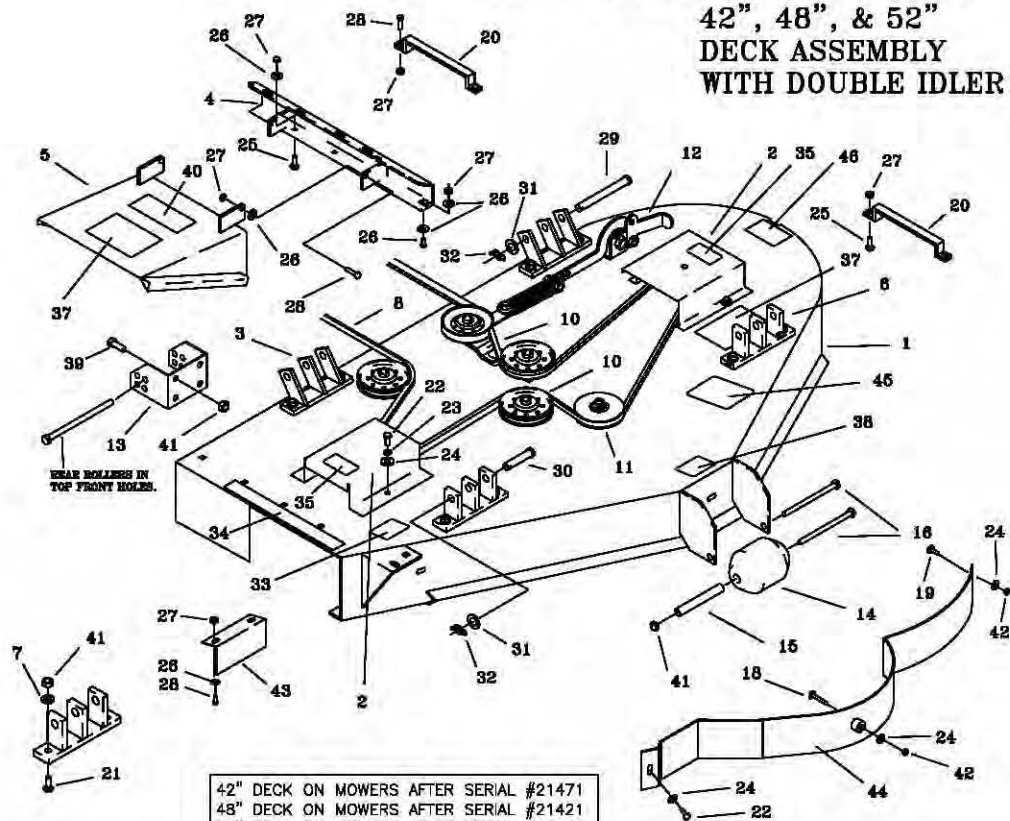


42" DECK ON MOWERS BEFORE SERIAL #21471
 48" DECK ON MOWERS BEFORE SERIAL #21421
 52" DECK ON MOWERS BEFORE SERIAL #21306

REF NO.	PART NO.	QTY.	DESCRIPTION	REF NO.	PART NO.	QTY.	DESCRIPTION
1	660-020A	1	42" DECK, W/DECALS	21	F-1672	8	CARRIAGE BOLT, 3/8 X 1-1/4
	660-021A	1	48" DECK, W/DECALS	22	F-1538	5	1/4-20 X 3/4 GR. 5
	660-022A	1	52" DECK, W/DECALS	23	F-1019-01	4	1/4" LOCKWASHER
2	660-023A	2	48" PULLEY COVER, W/DECAL	24	F-1009-01	9	1/4" FLAT WASHER
	637-085A	1	42" LH PULLEY COVER W/DECAL	25	F-1671	6	CARRIAGE BOLT 5/16 X 3/4
	643-035A	1	52" LH PULLEY COVER W/DECAL	26	F-1009-02	9	5/16" FLAT WASHER
	651-018A	1	42" RH PULLEY COVER, W/DECAL	27	F-1125	8	5/16-18 LOCKNUT
	643-034A	1	52" RH PULLEY COVER, W/DECAL	28	F-1015-15	2	5/16-18 X 1" GR. 5
3	651-009W	2	DECK HANGER	29	H-2240	2	PIN, 1/2" X 4-1/2"
4	649-012W	1	OUTLET STIFFENER	30	F-1889	2	PIN, 1/2" X 2-1/2"
5	649-054A	1	DECK CHUTE W/DECAL	31	F-1521	4	1/2" FLAT WASHER
6	643-016W	2	DECK HANGER	32	H-2239	4	RUE RING 1/2"
7	F-1546	4	5/16-18 X 3/4"	33	P-10947	1	DECAL, "GREASE SPINDLE"
8	D-3727	1	V-BELT, (KEVLAR) A-144 (42" & 48")	34	P-10122	1	DECAL, "MISSING CHUTE"
	D-3733	1	V-BELT, (KEVLAR) A-158 (52")	35	P-10935	2	DECAL, "ROTATING..."
10	-----	1	SINGLE IDLER ASSEMBLY (SEE PG.1-4)	37	P-10941	2	DECAL, "MULTI PERIL"
11	-----	3	SPINDLE ASSEMBLY (SEE PG.1-3)	38	P-11413	1	DECAL, "HOIST POINT"
12	-----	2	DRIVE BELT IDLER (SEE PG.1-4)	39	609-034P	1	10 GA. WASHER
13	609-182P	2	REAR SCALPER BRACKET (42")	40	P-10937	1	DECAL, "WARNING"
14	H-1948	5	ROLLER, 3-3/4 DIA. X 4-13/16	41	F-1005-03	8	LOCKNUT, 3/8 STOVER
15	609-183P	5	WHEEL BUSHING	42	F-1158	4	LOCKNUT, 1/4-20
16	F-1741	6	3/8-16 X 6" GR. 5		651-023P	1	AIR BAFFLE (42")
17	F-1239	11	3/8 LOCKNUT		629-230P	1	AIR BAFFLE (48" & 52")
18	F-1935	1	CARRIAGE BOLT, 1/4 X 1 1/2	44	651-022W	1	DUST BAFFLE WLDT, 42"
19	F-1823	1	CARRIAGE BOLT, 1/4 X 3/4		629-241W	1	DUST BAFFLE WLDT, 48"
20	F-1019-03	8	3/8" LOCKWASHER		629-229W	1	DUST BAFFLE WLDT, 52"

COUNTRY CLIPPER "JAZZEE" MOWER REPAIR PARTS MANUAL

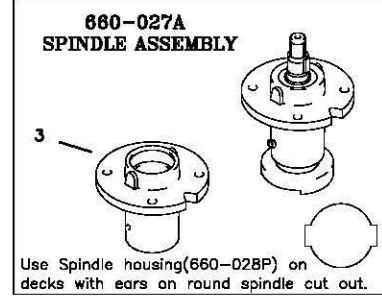
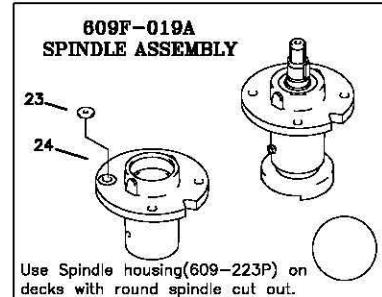
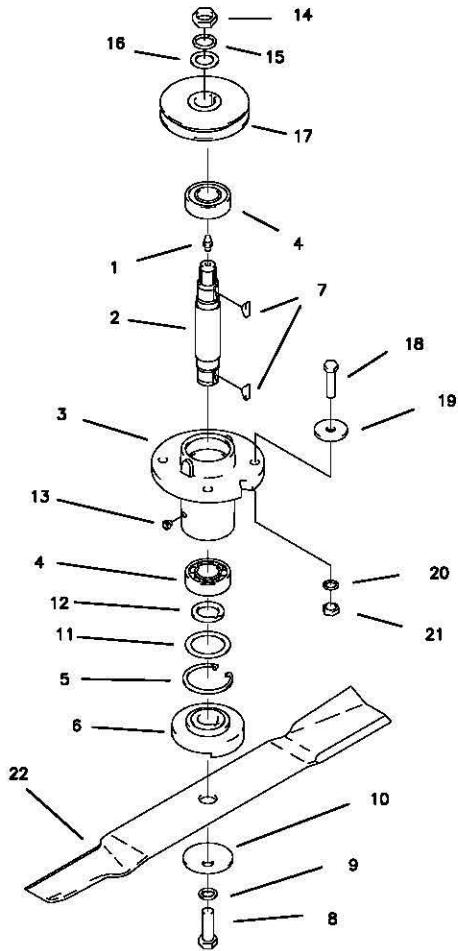
42", 48", & 52"
DECK ASSEMBLY
WITH DOUBLE IDLER



42" DECK ON MOWERS AFTER SERIAL #21471
48" DECK ON MOWERS AFTER SERIAL #21421
52" DECK ON MOWERS AFTER SERIAL #21306

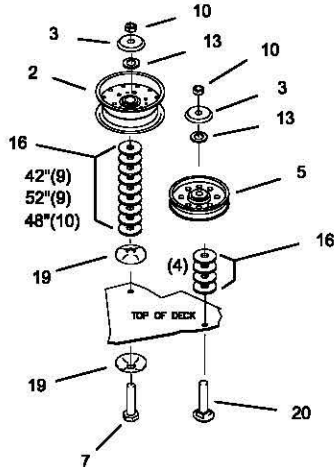
REF NO.	PART NO.	QTY.	DESCRIPTION	REF NO.	PART NO.	QTY.	DESCRIPTION
1	660-041A	1	42" DECK, W/DECALS	23	F-1019-01	1	1/4" LOCKWASHER
	660-042A	1	48" DECK, W/DECALS	24	F-1009-01	1	1/4" FLAT WASHER
	660-043A	1	52" DECK, W/DECALS	25	F-1671	1	CARRIAGE BOLT 5/16 X 3/4
2	660-023A	2	48" PULLEY COVER, W/DECAL	26	F-1009-02	1	5/16" FLAT WASHER
	637-065A	1	42" LH PULLEY COVER W/DECAL	27	F-1125	1	5/16"-18 LOCKNUT
	643-035A	1	52" LH PULLEY COVER W/DECAL	28	F-1015-15	1	5/16"-18 X 1" GR. 5
	651-018A	1	42" RH PULLEY COVER W/DECAL	29	H-2240	1	PIN, 1/2" X 4-1/2"
	643-034A	1	52" RH PULLEY COVER, W/DECAL	30	F-1889	1	PIN, 1/2" X 2-1/2"
3	651-009W	2	DECK HANGER	31	F-1521	1	1/2" FLAT WASHER
4	649-012W	1	OUTLET STIFFENER	32	H-2239	1	RUE RING 1/2"
5	649-054A	1	DECK CHUTE W/DECAL	33	P-10947	1	DECAL, "GREASE SPINDLE"
6	643-016W	2	DECK HANGER	34	P-10122	1	DECAL, "MISSING CHUTE"
7	F-1019-03	1	3/8 LOCK WASHER	35	P-10935	1	DECAL, "ROTATING..."
8	D-3727	1	V-BELT, (KEVLAR) A-144 (42")	37	P-10941	1	DECAL, "MULTI PERIL"
	D-3733	1	V-BELT, (KEVLAR) A-158 (48" & 52")	38	P-11413	1	DECAL, "HOIST POINT"
10	-----	1	DOUBLE IDLER ASSEMBLY (SEE PG.1-5)	39	F-1394	1	3/8-16 X 1" GR. 5
11	-----	3	SPINDLE ASSEMBLY (SEE PG.1-3)	40	P-10937	1	DECAL, "WARNING"
12	-----	1	BELT TIGHTING SYSTEM (SEE PG.1-5)	41	F-1005-03	1	LOCKNUT, 3/8 STOVER
13	609-182P	2	REAR SCALPER BRACKET (42")	42	F-1158	1	LOCKNUT, 1/4-20
14	H-1948	5	ROLLER, 3-3/4 DIA. X 4-13/16	43	651-023P	1	AIR BAFFLE (42")
15	609-183P	5	WHEEL BUSHING		629-230P	1	AIR BAFFLE (48" & 52")
16	F-1741	1	3/8-16 X 6" GR. 5	44	651-022W	1	DUST BAFFLE WLDT, 42"
17	F-1239	1	3/8 LOCKNUT		629-241W	1	DUST BAFFLE WLDT, 48"
18	F-1935	1	CARRIAGE BOLT, 1/4 X 1 1/2		629-229W	1	DUST BAFFLE WLDT, 52"
19	F-1823	1	CARRIAGE BOLT, 1/4 X 3/4	45	P-11932	1	DECAL, BELT ROUTING
20	649-035P	2	DECK HANDLE	46	P-11949	1	DECAL, DECK SIZE 42"
21	F-1672	1	CARRIAGE BOLT, 3/8 X 1-1/4		P-11950	1	DECAL, DECK SIZE 48"
22	F-1538	1	1/4-20 X 3/4 GR. 5		P-11951	1	DECAL, DECK SIZE 52"

DECK SPINDLE ASSEMBLY

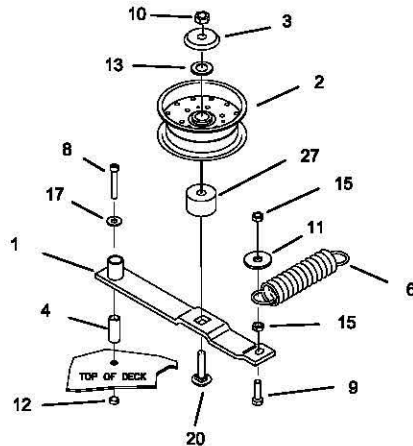


REF NO.	PART NO.	QTY.	DESCRIPTION	REF NO.	PART NO.	QTY.	DESCRIPTION
-	660-027A	-	SPINDLE ASSEMBLY	18	F-1572	4	3/8-24 X 1-1/2" HHCS GR. 5
1	H-1056	1	GREASE FITTING	19	609-034P	4	SPINDLE SPACER REINFORCEMENT
2	609-162P	1	SPINDLE SHAFT	20		4	3/8" LOCK WASHER
3	660-028P	1	SPINDLE HOUSING, FLAT	21	F-1573	4	3/8-24 LOCKNUT, M-F
4	D-3058	2	BEARING, #6205-2RS	22	H-1666	1	BLADE, LOW L, 17" CUT 48"
5	H-1893	1	SNAP RING INT. 52MM	-	H-1665	-	BLADE, LOW L, 15" CUT 42"
6	609-152P	1	BLADE SPACER	-	H-2387	-	BLADE, LOW L, 18 3/8" CUT, 52"
7	D-1004-02	2	KEY, WOODRUF, 1/4 X 3/4				OPTIONAL BLADES
8	F-1526	1	1/2-13 X 1-1/2" HHCS GR. 5	H-1714		-	BLADE, HIGH L, 17" CUT 48"
9	F-1464	1	1/2" LOCK WASHER	H-1715		-	BLADE, HIGH L, 15" CUT 42"
10	F-1507	1	WASHER, 1/2" CUPPED	H-2246		-	BLADE, HIGH L, 18 3/8" CUT 52"
11	609-151P	1	WASHER, SEAL				
12	609-073P	1	ARBOR SPACER	H-2013		-	BLADE, GATOR, 15" CUT 42"
13	H-2066	1	GREASE VENT 5 LBS.	H-2202		-	BLADE, GATOR, 17" CUT 48"
14	F-1461	1	3/4-16 NUT, HEX JAM	H-2251		-	BLADE, GATOR, 18 3/8" CUT 52"
15	F-1463	1	3/4" LOCK WASHER				
16	F-1510	1	3/4" WASHER, FLAT STD.	23	629-237P	2	WASHER, 406 ID X 1"
17	D-3732-01	-	SPINDLE PULLEY, 42"	24	609-223P	1	SPINDLE HOUSING,
	609-155P	-	SPINDLE PULLEY, 48"				
	D-3732-03	-	SPINDLE PULLEY, 52"				

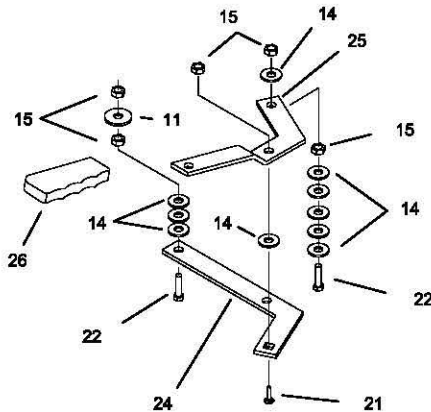
DECK BELT IDLER & RELATED PARTS



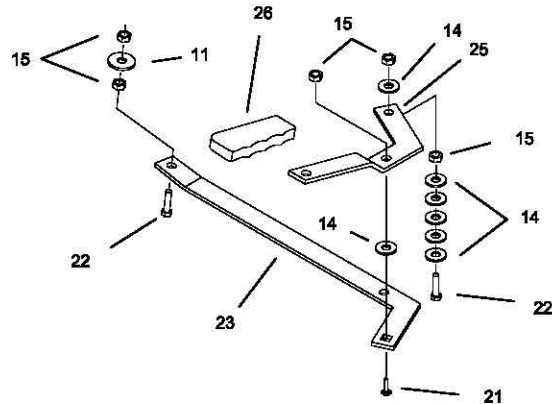
DECK IDLER ASSEMBLY & RELATED PARTS



**BELT TIGHTENER
42" AND 52" DECKS**

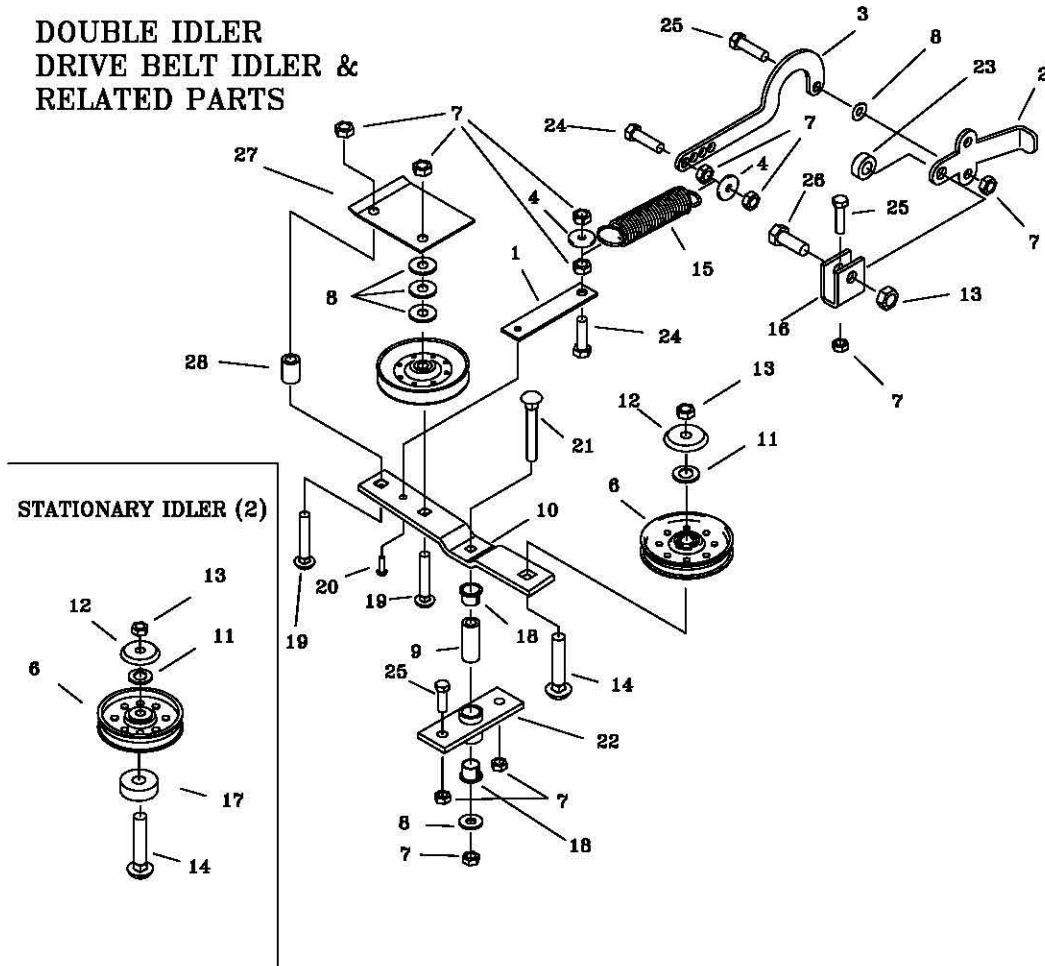


**BELT TIGHTENER
48" AND 60" DECKS**



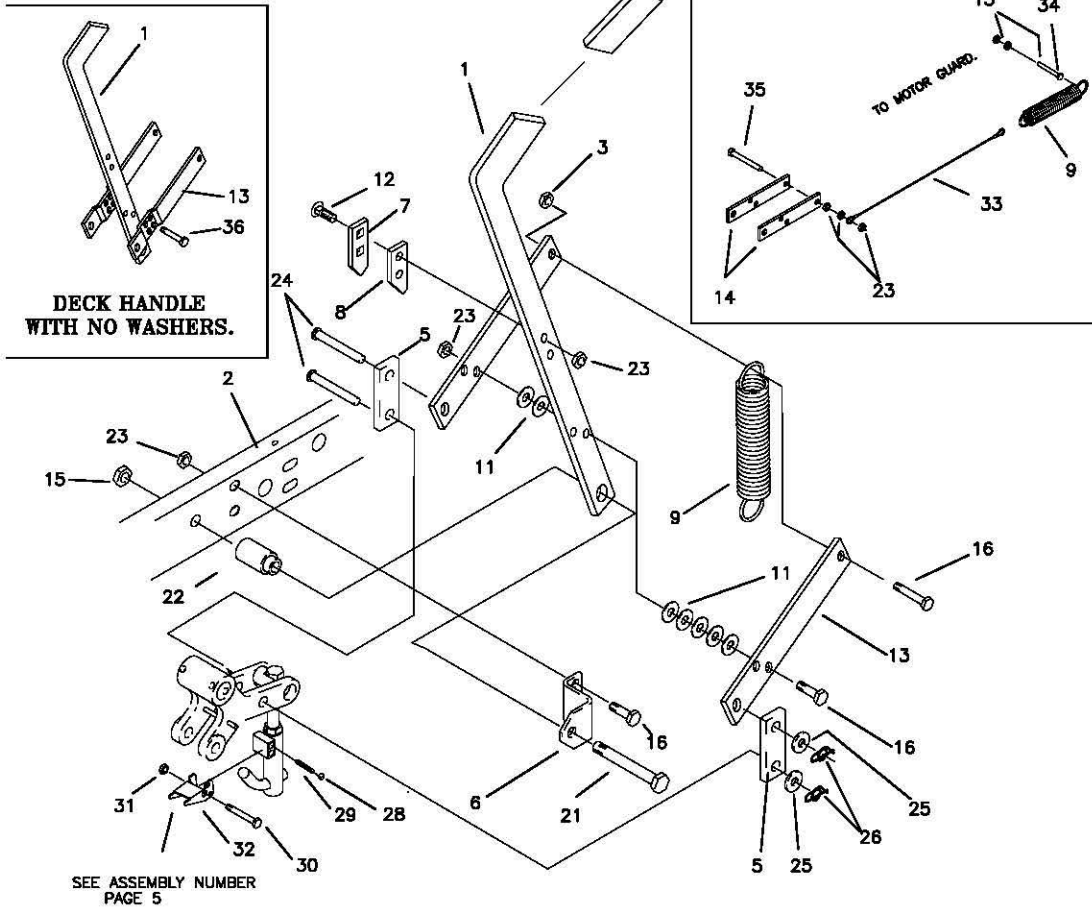
REF NO.	PART NO.	DESCRIPTION	REF NO.	PART NO.	DESCRIPTION
1	843-007W	SINGLE IDLER ARM, SHORT (42" & 52" DECK)	14	F-1009-03	3/8" FLAT WASHER
-	637-025W	SINGLE IDLER ARM, LONG (48" DECK)	15	F-1005-03	3/8" STOVER NUT
2	D-3683	IDLER PULLEY, 2" X 5" (BACK OF DECK)	16	F-1009-05	1/2" FLAT WASHER
3	620-201P	BEARING CAP	17	F-1009-02	5/16" FLAT WASHER
4	621-103P	PIN	18	664-022P	WASHER, (48")
5	D-3338	PULLEY, FLAT IDLER (MIDDLE OF DECK)	19	F-1507	WASHER, CUPPED (42" AND 52")
6	H-2092	SPRING, 1-1/2" X 5"	20	F-1822	1/2-13 X 2-1/4 CARRIAGE BOLT
7	F-1668	1/2-13 X 2 3/4" GR. 5	21	F-1274	3/8-16 X 1" CARRIAGE BOLT
8	F-1800	5/16-18 SHCS X 2-1/4"	22	F-1015-27	3/8-16 X 1-1/2" GR. 5
9	F-1574	3/8-24 X 1-1/4" GR. 5	23	660-025P	ARM, BENT
10	F-1378	1/2-13 LOCKNUT	24	660-026P	HANDLE, LONG
11	609-034P	REINFORCEMENT WASHER	25	660-024P	HANDLE, BENT
12	F-1125	5/16 LOCK NUT	26	H-1926	GRIP, PLASTIC
13	F-1521	1/2" NARROW WASHER	27	660-029P	IDLER PULLEY SPACER
			28	XX	XX

**DOUBLE IDLER
DRIVE BELT IDLER &
RELATED PARTS**



REF NO.	PART NO.	QTY.	DESCRIPTION	REF NO.	PART NO.	QTY.	DESCRIPTION
1	660-035P	1	EXTENSION FOR SPRING	22	660-034W	1	MOUNT, DOUBLE IDLER
2	660-030P	1	HANDLE, BELT TIGHTENER	23	660-038P	1	3/8" THICK SPACER
3	660-031P	1	ARM, BELT TIGHTENER	24	F-1307	2	3/8-16 X 1-1/4" GR. 5
4	609-034P	2	SPINDLE SPACER REINFORCEMENT	25	F-1394	4	3/8-16 X 1" GR. 5
5	D-3758	1	"V" IDLER PULLEY	26	F-1526	1	1/2-13 X 1-1/2" GR. 5
6	D-3338	2	IDLER PULLEY	27	668-022P	1	BELT GUARD
7	F-1005-03	11	3/8 LOCK NUT	28	668-021P	1	SPACER, BELT GUARD
8	F-1009-03	5	3/8 FLAT WASHER				
9	659-085P	1	MOUNTING PIN				
10	660-036P	1	IDLER ARM				
11	F-1521	4	1/2" FLAT WASHER				
12	620-201P	3	BEARING CAP				
13	F-1005-05	4	1/2" LOCK NUT				
14	F-1822	1	1/2-13 X 2-1/4" GR. 5				
15	H-2092	1	SPRING				
16	661-015P	1	SHACKLE				
17	660-037P	1	1/2" THICK SPACER				
18	D-3730	2	BUSHING, TEFLON COATED				
19	F-1177	2	3/8-16 X 1-1/2" CARRIAGE BOLT				
20	F-1733	1	1/4" DRIVE STUD				
21	F-1865	1	3/8-16 X 2-1/2" CARRIAGE BOLT				

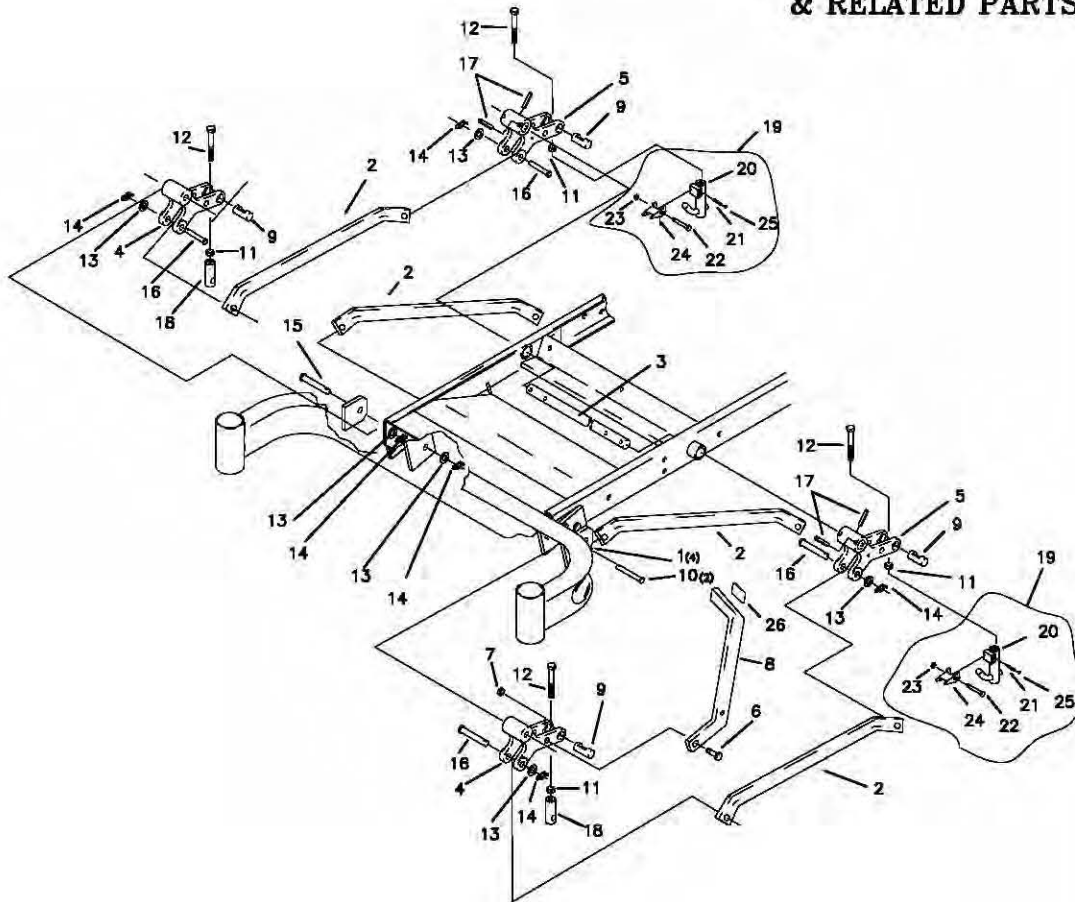
LIFT HANDLE ASSEMBLY & RELATED PARTS



REF NO.	PART NO.	QTY.	DESCRIPTION	REF NO.	PART NO.	QTY.	DESCRIPTION
1	659-060P	1	LIFT HANDLE	19	-	-	-
2	659-022W	1	FRAME WELDMENT, LH.	20	-	-	-
3	F-1125	1	5/16-18 STOVER NUT	21	F-1439	1	1/2-13 X 3" GR. 5
4	-	-	-	22	642-095P	1	HANDLE PIVOT PIN
5	642-081P	2	HANDLE LINK	23	F-1005-03	7	NUT, 3/8-16 LOCKNUT (STOVER)
6	642-041P	1	HANDLE PIVOT BRACKET	24	F-1889	2	CLEVIS PIN, 1/2 X 2 5/8"
7	642-127P	1	TOP PEG LATCH PLATE	25	F-1521	2	1/2" FLAT WASHER
8	642-126P	1	TOP PEG SPACER PLATE	26	H-2239	2	RUE RING, 1/2"
9	H-1610	1	SPRING, 1-1/2" OD. X 8"	27	H-2324	1	VINYL GRIP, 3/8 X 1-1/2"
10	-	-	-	28	D-3723	1	1/4" CHROME STEEL BALL
11	F-1009-03	9	FLAT WASHER, 3/8"	29	H-2390	1	SPRING, .219 OD X .024 WIRE
12	F-1672	2	CARRIAGE BOLT, 3/8-16 X 1-1/4"	30	F-1716	1	1/4 X 1-1/2", G.5
13	659-049P	2	SPRING ANCHOR PLATE (JOYSTICK)	31	F-1158	1	NUT, 1/4" STOVER
14	642-060P	2	SPRING ANCHOR PLATE (TWIN STICK)	32	642-178P	1	LATCH
15	F-1005-05	1	NUT, 1/2-13 LOCKNUT	33	H-2106	1	CABLE
16	F-1558	2	3/8-16 X 7/8" GR. 5	34	F-1293	2	1/2-13 X 1-1/2" GR. 5
17	-	-	-	35	F-1329	1	1/2 X 3" FULL THRD. GR 5
18	-	-	-	36	F-1307	2	3/8-16 X 1-1/4" BOLT GR 5

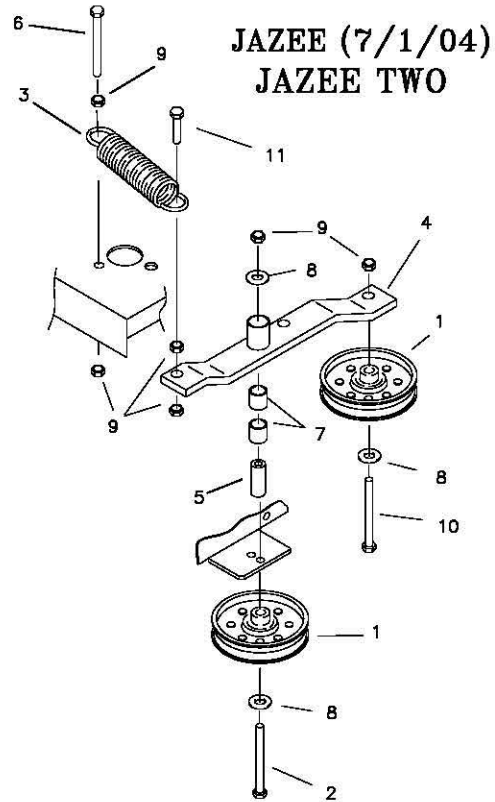
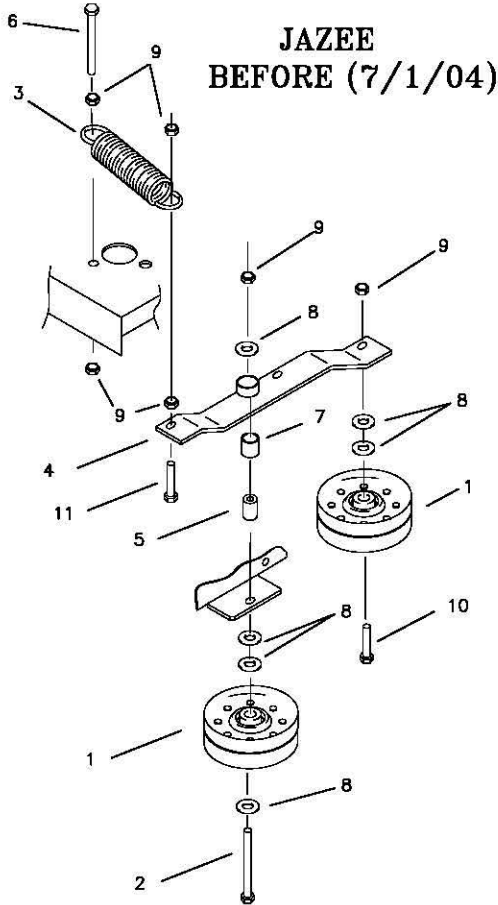
COUNTRY CLIPPER "JAZZ" MOWER REPAIR PARTS MANUAL

LIFT ASSEMBLY
& RELATED PARTS



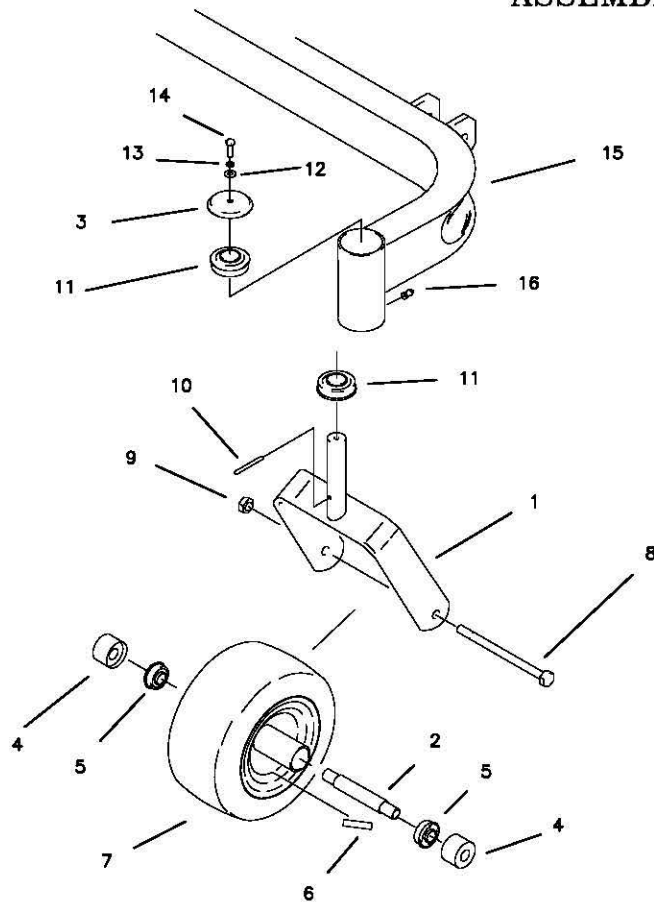
REF NO.	PART NO.	QTY.	DESCRIPTION	REF NO.	PART NO.	QTY.	DESCRIPTION
1	642-063P	4	DRAG BAR TAB	15	F-1890	2	CLEVIS PIN, 1/2 X 3-1/2"
2	659-033P	4	DRAG LINK BAR	16	F-1898	4	CLEVIS PIN, 1/2 X 2-3/4"
3	620-051P	1	LIFT BAR	17	F-1038-37	4	ROLL PIN, 5/16 DIA. X 1.750
4	642-081P	2	LIFT SLEEVE, FRONT	18	642-175P	2	ADJUSTABLE HANGER END
5	642-082P	2	LIFT SLEEVE, REAR				
6	F-1879	1	5/16-18 X 1 1/4" GR.5	19	642-183A	2	REAR DECK HANGER ASSEMBLY
7	F-1125	1	5/16-18 STOVER NUT	20	642-176W	1	REAR DECK HANGER WLDT
8	659-056P	1	DECK LIFT PEDAL	21	H-2390	1	SPRING, .219 OD X .024 WIRE
9	642-177P	4	HANGER PIN	22	F-1716	1	1/4 X 1-1/2", G.5
10	F-1896	2	CLEVIS PIN, 1/2 X 1-3/4"	23	F-1158	1	NUT, 1/4" STOVER
11	F-1489	4	NUT, 1/2" JAM	24	642-178P	1	LATCH
12	F-1936	4	1/2-13 X 3-1/2, 2" THREAD	25	D-3723	1	1/4" CHROME STEEL BALL
13	F-1521	8	WASHER, 1/2 NARROW				
14	H-2239	8	RUE RING, 1/2"	26	H-2401	1	TREAD PAD

TRANSMISSION IDLERS & RELATED PARTS



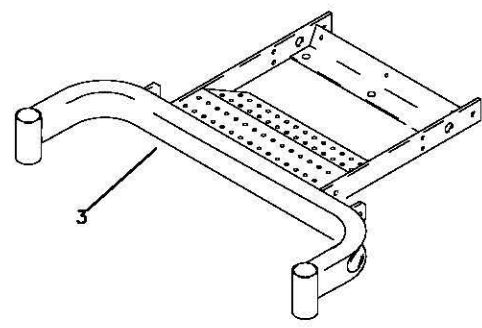
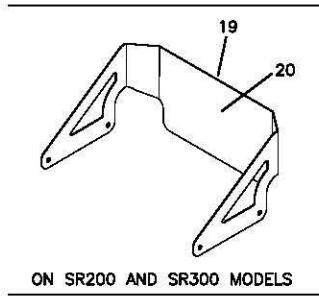
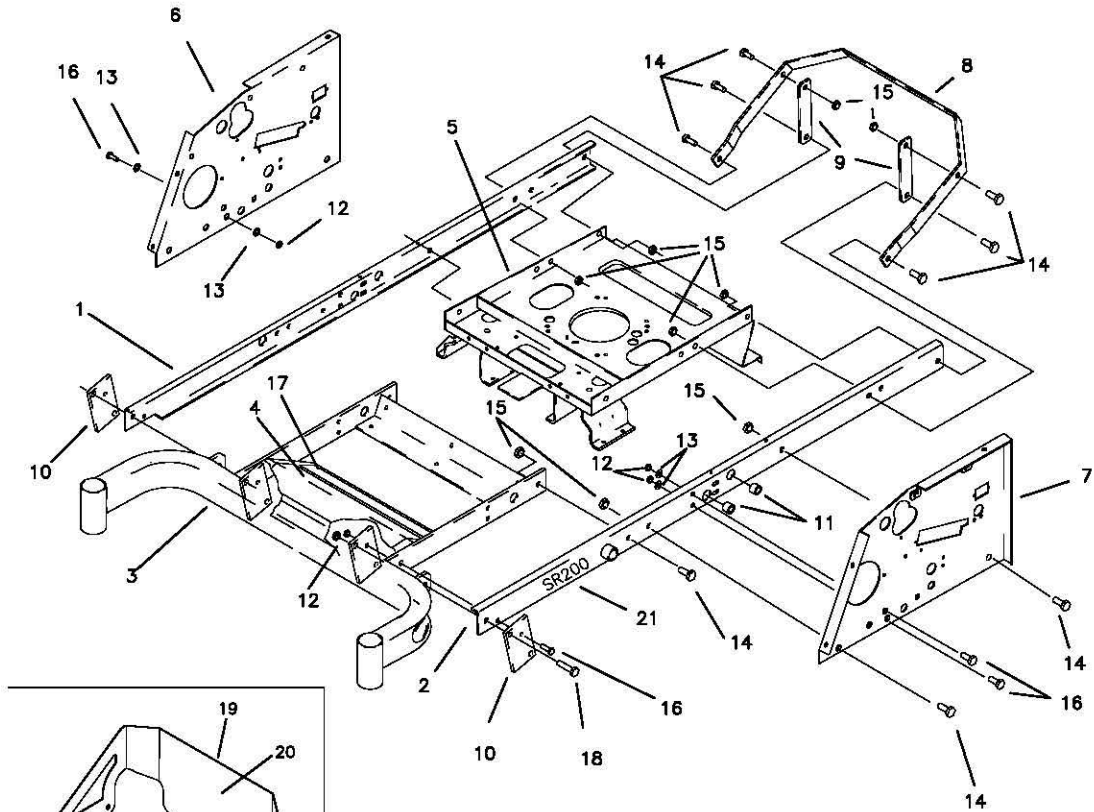
REF NO.	PART NO.	QTY.	DESCRIPTION	REF NO.	PART NO.	QTY.	DESCRIPTION
1	D-3689	2	FLAT IDLER PULLEY	1	D-3768	2	FLAT IDLER PULLEY
2	F-1542	1	3/8-16 X 2 3/4" GR. 5	2	F-1827	1	3/8-16 X 3 1/2" GR. 5
3	H-2092	1	SPRING, 1 1/4 X 5"	3	H-2092	1	SPRING, 1 1/4 X 5"
4	659-030W	1	IDLER ARM	4	659-084W	1	IDLER ARM
5	659-024P	1	IDLER PIVOT SHAFT	5	659-085P	1	MOUNTING PIN
6	F-1537	1	3/8-16 X 3" GR.5	6	F-1537	1	3/8-16 X 3" GR.5
7	D-3573	2	DX BUSHING, 5/8 X 3/4	7	D-3573	2	DX BUSHING, 5/8 X 3/4
8	F-1009-03	6	3/8" FLAT WASHER	8	F-1009-03	3	3/8" FLAT WASHER
9	F-1011-03	6	3/8-16 LOCK NUT	9	F-1011-03	6	3/8-16 LOCK NUT
10	F-1015-28	1	3/8-16 X 1 3/4" GR. 5	10	F-1073	1	3/8-16 X 2" GR. 5
11	F-1307	1	3/8-16 X 1 1/4" GR. 5	11	F-1307	1	3/8-16 X 1-1/4" GR. 5

CASTER WHEEL ASSEMBLY



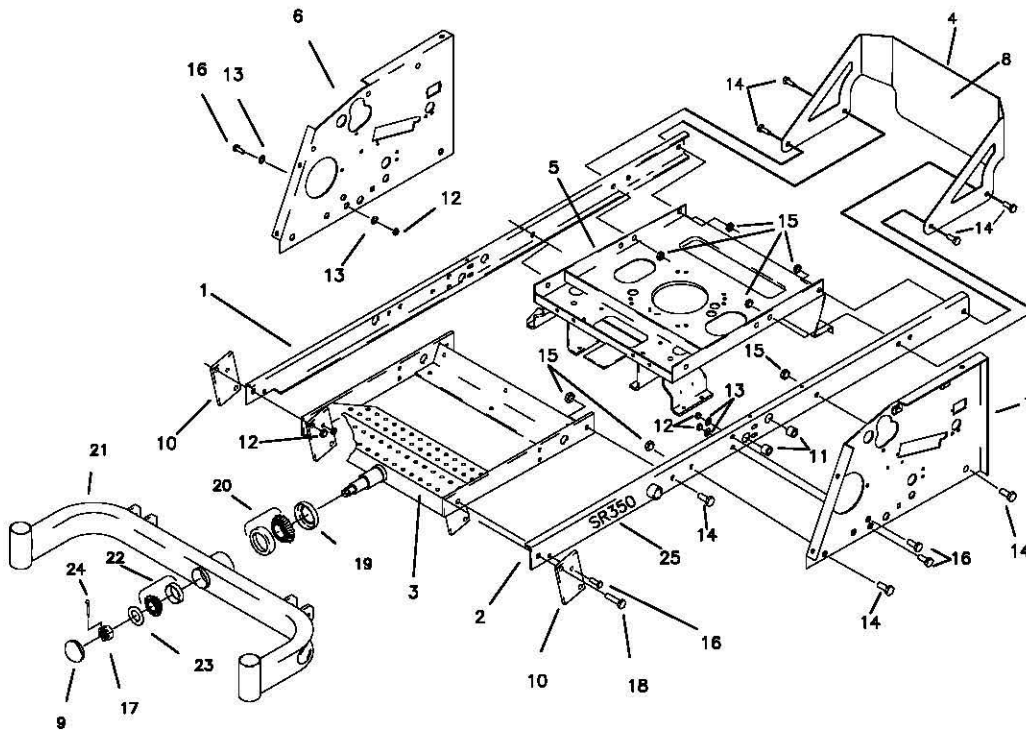
REF NO.	PART NO.	QTY.	DESCRIPTION
1	659-003W	2	CASTER WELDMENT
2	622-121P	2	BEARING SPACER
3	636-133P	2	BEARING CAP, RED
4	659-004P	4	BEARING SHIELD
5	D-3432	4	BEARING, 5/8 ID X 1-3/8 OD
6	P-11384	2	DECAL, 12 PSI
7	D-3605	2	10" TIRE, W/RIM
-	-	-	-
8	F-1942	2	1/2-13 X 6 1/2" GR. 5 BOLT
9	F-1005-05	2	1/2-13 LOCK NUT
10	F-1456	2	3/16 ROLL PIN
11	D-2008-02	4	BEARING, SPD SF-16-32
12	F-1009-01	2	1/4" FLAT WASHER
13	F-1019-01	2	1/4" LOCK WASHER
14	F-1810	2	1/4-20 X 3/4 W/NYLON PATCH
15	-----	1	SEE PAGE 1/8
16	H-1056	2	GREASE ZERK

FRAME SIDES & RELATED PARTS
FOR JAZEE AND JAZEE TWO



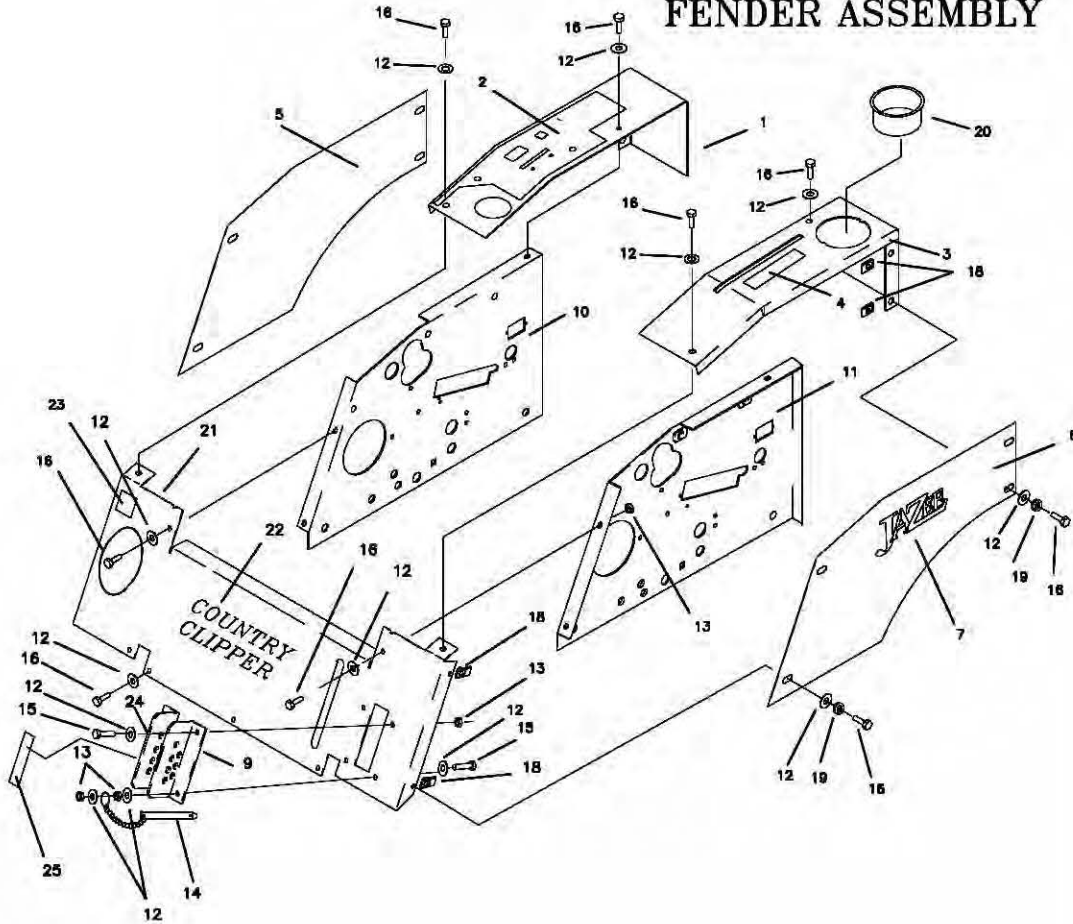
REF NO.	PART NO.	QTY.	DESCRIPTION
1	659-021W	1	FRAME SIDE RH.
2	659-022W	1	FRAME SIDE LH.
3	659-038W	1	FRONT AXLE
4	H-1705	1	SAFETY MAT
5	659-050W	1	MOTOR MOUNT WLDT.
6	659-011P	1	SIDE PANEL RH.
7	659-012P	1	SIDE PANEL LH.
8	642-093P	1	ENGINE GUARD
9	642-015P	2	ENGINE GUARD MNT. LEG
10	642-063P	4	DRAG BAR TAB
11	D-3730	4	BUSHING, 5/8 BORE
12	F-1005-03	10	3/8-16 STOVER NUT
13	F-1009-03	10	3/8 FLAT WASHER
14	F-1759	8	1/2-13 X 1" GR.5
15	F-1005-05	16	1/2-13 LOCK NUT
16	F-1558	6	3/8-16 X 7/8" GR.5
17	H-1931	1	SAFETY TREAD, 2" X 18"
18	F-1293	2	1/2-13 X 2", GR.5
19	P-12097	1	COUNTRY CLIPPER DECAL
20	647-098A	1	ENGINE GUARD W/DECAL
21	P-12086	2	SR200 DECAL
-	P-12087	2	SR300 DECAL

FRAME SIDES &
RELATED PARTS
JAZEE PRO SR350



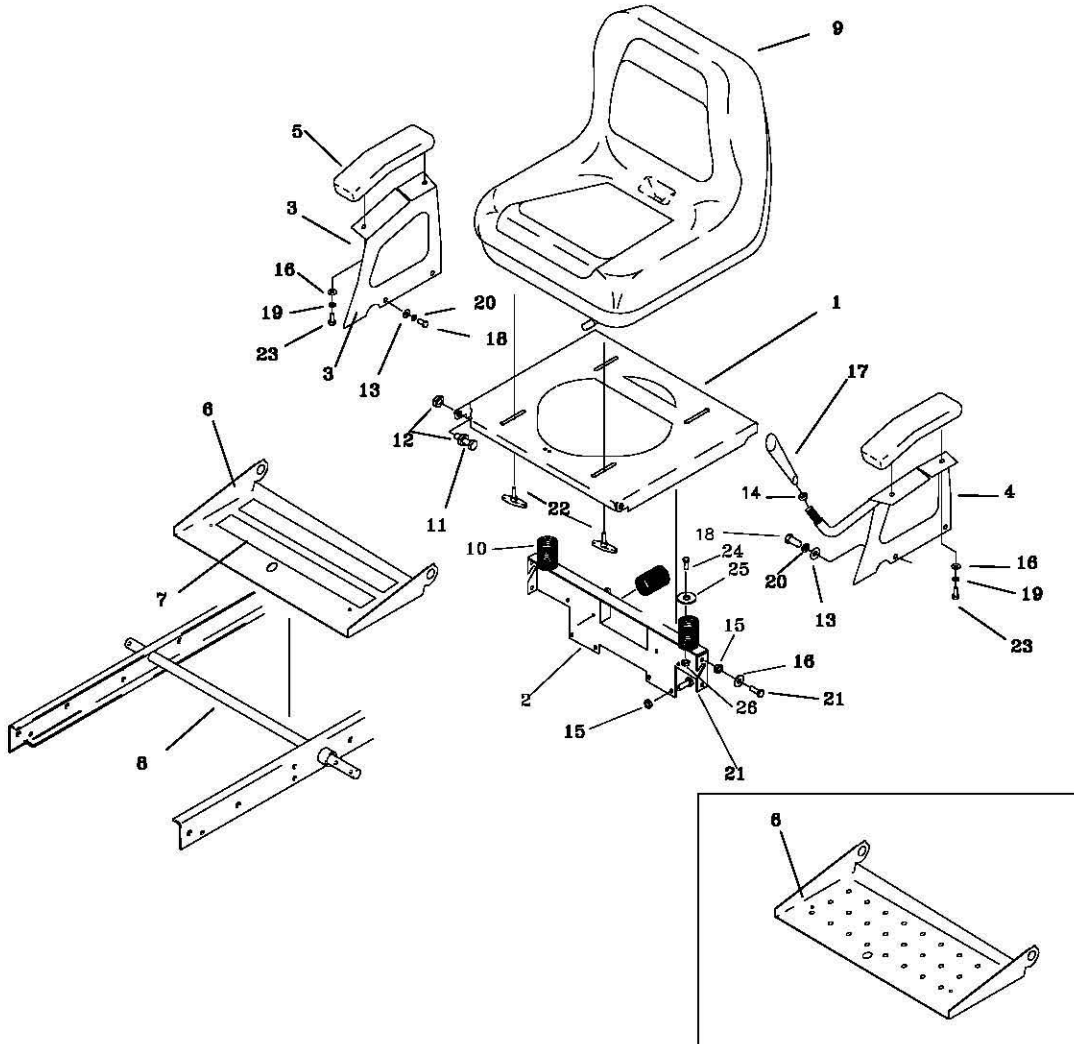
REF NO.	PART NO.	QTY.	DESCRIPTION	REF NO.	PART NO.	QTY.	DESCRIPTION
1	659-021W	1	FRAME SIDE RH.	14	F-1759	10	1/2-13 X 1" GR.5
2	659-022W	1	FRAME SIDE LH.	15	F-1005-05	12	1/2-13 LOCK NUT
3	659-038W	1	AXLE MOUNTING WELDMENT	16	F-1558	6	3/8-16 X 7/8" GR.5
4	P-12097	1	COUNTRY CLIPPER, DECAL	17	F-1724	1	1-14 SLOTTED NUT
5	659-050W	1	MOTOR MOUNT WLDT.	18	F-1293	2	1/2-13 X 2", GR.5
6	659-011P	1	SIDE PANEL RH.	19	D-3647	1	FRONT PIVOT SEAL
7	659-012P	1	SIDE PANEL LH.	20	D-3646	1	FRONT PIVOT TAPARED ROLLER BRG.
8	647-098A	1	ENGINE GUARD W/DECAL	21	659-123W	1	FRONT AXLE WLDT.
9	H-1924	1	GREASE CAP	22	D-3782	1	BEARING SET
10	642-063P	2	DRAG BAR TAB	23	606-303P	1	1" WASHER
11	D-3730	4	BUSHING, 5/8 BORE	24	F-1728	1	3/16 X 2" COTTER PIN
12	F-1005-03	10	3/8-16 STOVER NUT	25	P-12088	2	SR350 DECAL
13	F-1009-03	10	3/8 FLAT WASHER				

FENDER ASSEMBLY



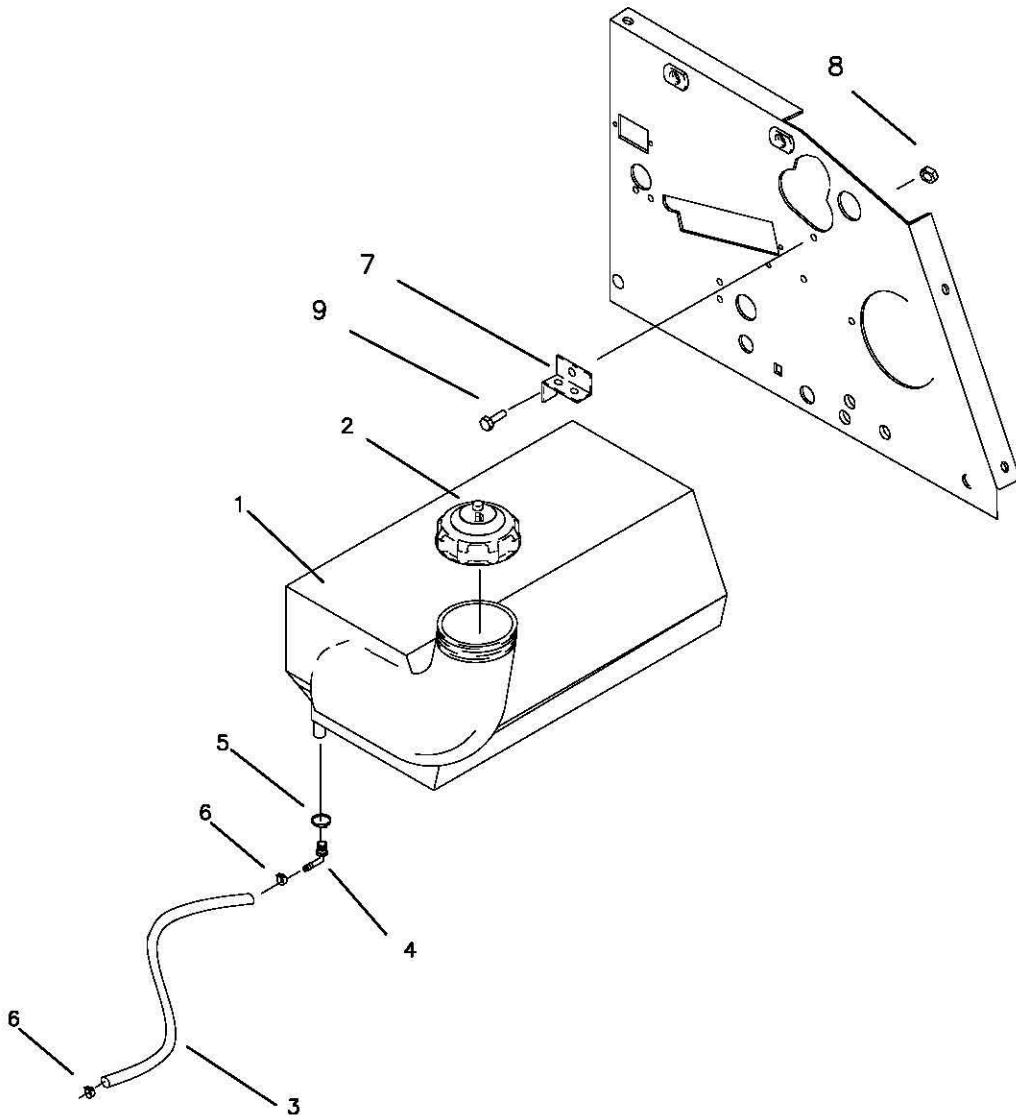
REF NO.	PART NO.	QTY.	DESCRIPTION	REF NO.	PART NO.	QTY.	DESCRIPTION
1	659-067A	1	FENDER CAP RH W/DECAL	9	642-131P	1	LATCH PLATE LH.
-	659-098A	1	FENDER CAP, TWIN STK. RH W/DECAL	10	659-011P	1	SIDE PANEL RH.
2	P-11626	1	DECAL, "CONTROL PANEL"	11	659-012P	1	SIDE PANEL LH.
3	659-068A	1	FENDER CAP LH. W/DECAL	12	F-1009-02	22	5/16 FLAT WASHER
4	659-097A	1	FENDER CAP, TWIN STK. LH. W/DECAL	13	F-1125	16	5/16-18 LOCK NUT
-	P-11382	1	DECAL, PARK BRAKE	14	F-1807	1	1/2" X 2.4 CLEVIS PIN W/SASH
5	659-069A	1	FENDER SKIRT RH W/DECAL	15	F-1879	3	5/16-18 X 1-1/4" GR. 5
-	659-100A	1	FENDER SKIRT RH JAZEE TWO W/DECAL	16	F-1015-15	21	5/16-18 X 1" GR.5
-	659-141A	1	FENDER SKIRT RH JAZEE PRO W/DECAL	18	F-1860	8	5/16 U-NUT
6	659-070A	1	FENDER SKIRT LH W/DECAL	19	F-1019-02	8	5/16 LOCK WASHER
-	659-099A	1	FENDER SKIRT LH JAZEE TWO W/DECAL	20	644-028P	1	CUP HOLDER
-	659-142A	1	FENDER SKIRT LH JAZEE PRO W/DECAL	21	659-071A	1	FRONT PANEL W/DECALS
7	P-11624	2	DECAL, JAZZEE	22	P-11112	1	DECAL, "COUNTRY CLIPPER"
-	P-11805	2	DECAL, JAZZEE TW®	23	P-10939	1	DECAL, "CAUTION"
-	P-12063	2	DECAL, JAZZEE PRO	24	642-137A	1	LATCH PLATE RH W/DECAL
				25	P-11407	1	DECAL, "CUT HEIGHT"

SEAT, FOOTDECK &
RELATED PARTS



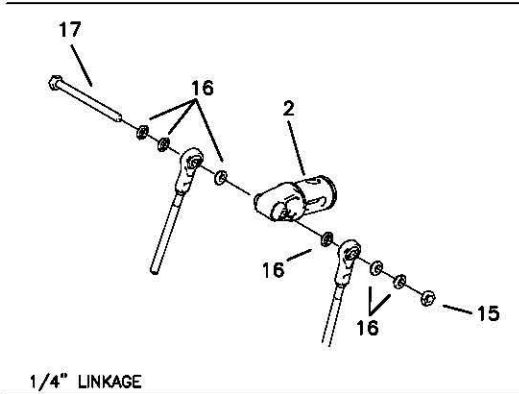
REF NO.	PART NO.	QTY.	DESCRIPTION	REF NO.	PART NO.	QTY.	DESCRIPTION
1	659-005P	1	SEAT MOUNTING BASE	14	F-1486	1	3/8-16 JAM NUT
2	659-016P	1	REAR SEAT BRACE	15	F-1005-02	8	5/16-18 LOCK NUT
3	659-051P	1	ARM REST RH. (JOYSTICK)	16	F-1009-02	8	5/16 FLAT WASHER
4	659-055W	1	ARM REST LH. (JOYSTICK)	17	H-2317	1	TAPERED HANDLE
5	621-143A	2	ARM REST PAD	18	F-1015-23	4	3/8-16 X 3/4" GR. 5
6	659-072A	1	FOOT DECK W/TREAD	19	F-1019-02	4	5/16 LOCK WASHER
7	H-1931	2	SAFETY TREAD	20	F-1019-03	4	3/8 LOCK WASHER
8	620-051P	1	LIFT BAR	21	F-1546	6	5/16-18 X 3/4" GR. 5
9	H-2393	1	SEAT	22	659-073A	4	T-HANDLE ASSEMBLY
10	H-1920	3	SEAT SPRING	23	F-1015-15	4	5/16-18 X 1" GR. 5
11	F-1015-27	2	3/8-16 X 1 1/2" GR. 5	24	F-1538	3	1/4-20 X 3/4", GR.5
12	F-1005-03	4	3/8-16 LOCK NUT	25	620-050P	3	1" HEAVY WASHER
13	F-1009-03	4	3/8 FLAT WASHER	26	F-1158	3	1/4" STOVER NUT

FUEL TANK ASSEMBLY



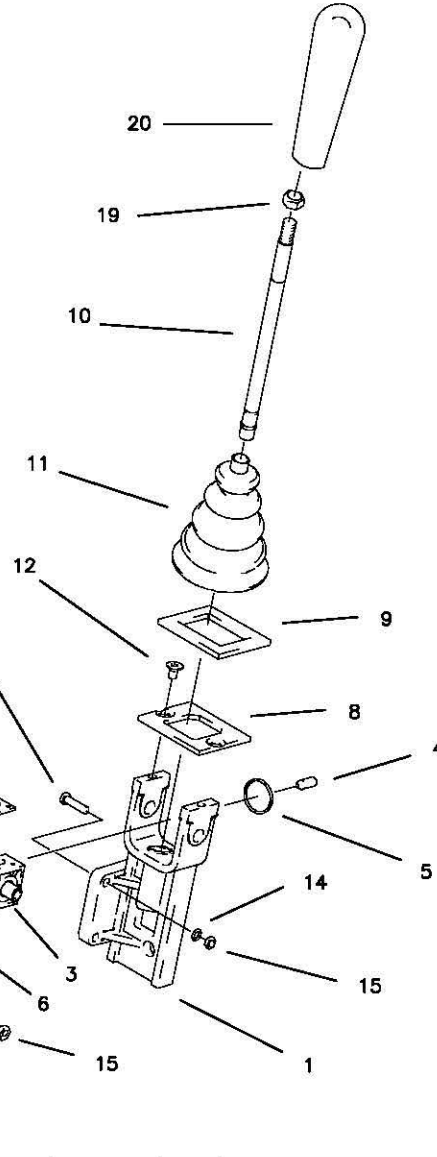
REF NO.	PART NO.	QTY.	DESCRIPTION
1	H-2394	1	4 1/2 GALLON TANK
2	H-2232	1	GAS CAP
3	644-034P	1	29-1/2" FUEL LINE
4	H-1645	1	HOSE BARB, 90 DEG.
5	H-1952	1	HOSE CLAMP
6	H-1687	2	HOSE CLAMP, 1/2"
7	859-066P	1	TANK MOUNTING CLAMP
8	F-1158	1	1/4-20 STOVER NUT
9	F-1015-03	1	1/4-20 X 3/4, GR.5

**JOYSTICK STEERING
CONTROL AND
RELATED PARTS**



1/4" LINKAGE

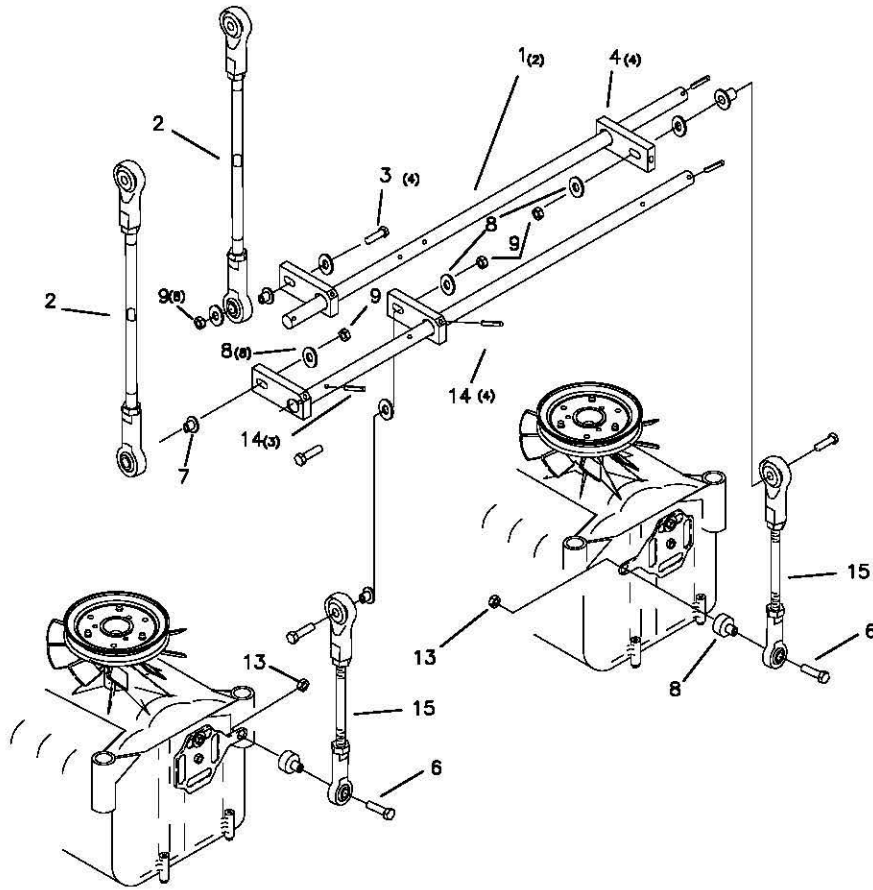
NOTE: ITEM'S #2 AND #3 MUST BE REPLACED AT THE SAME TIME FOR MAXIMUM PERFORMANCE.



3/8" LINKAGE

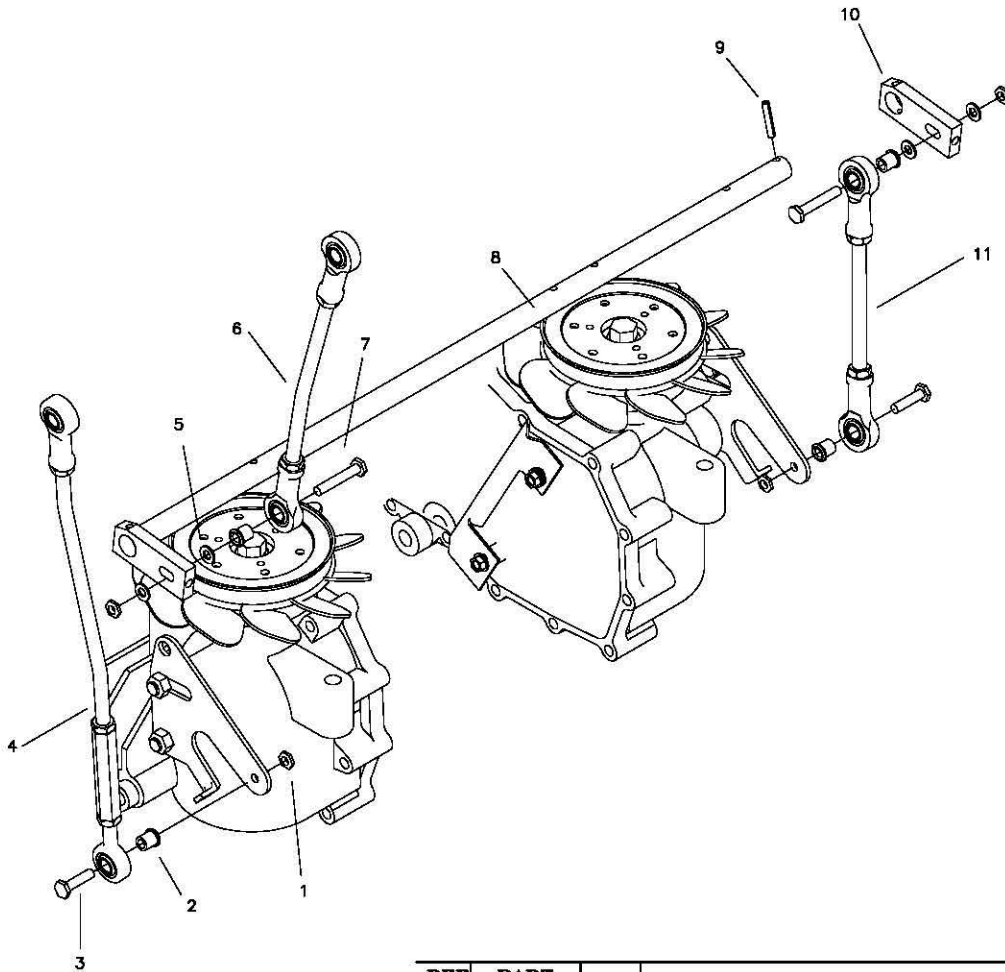
REF NO.	PART NO.	QTY.	DESCRIPTION	REF NO.	PART NO.	QTY.	DESCRIPTION
-	636-141A	1	JOYSTICK ASSEMBLY	11	H-1991	1	BOOT, BELLOWS
1	621-124P	1	JOYSTICK YOKE	12	F-1714	2	1/4-20 X 1/2" FHCS GR. 5
2	H-1992	1	PIVOT SHAFT	13	F-1015-05	3	1/4-20 X 1" HHCS GR. 5
3	H-1993	2	PIVOT BLOCK	14	F-1019-01	3	1/4" LOCK WASHER
4	F-1120	1	BALL PLUNGER	15	F-1158	4	1/4-20 LOCK NUT
5	H-1997	1	SNAP RING, SPIRLOCK	16	H-1989	6	BUSHING, BALL JOINT
6	619-306P	2	PIVOT BLOCK PLATE	17	F-1765	1	1/4-20 X 3" GR. 5
7	F-1624	8	#6-32 X 3/8" SCREW SLOT	18	F-1020-01	1	1/4-20 X 3-1/2" GR. 5
8	636-140P	1	JOYSTICK TOP PLATE	19	F-1011-03	1	3/8-16 NUT, JAM
9	H-1947	1	GASKET, FOAM	20	H-2317	1	HANDLE GRIP, TAPERED
10	621-140A	1	JOYSTICK SHAFT ASSEMBLY	21	H-2465	2	1/4" SPACER

**JOYSTICK STEERING
CONTROL AND
RELATED PARTS
(continued)
3/8" LINKAGE**



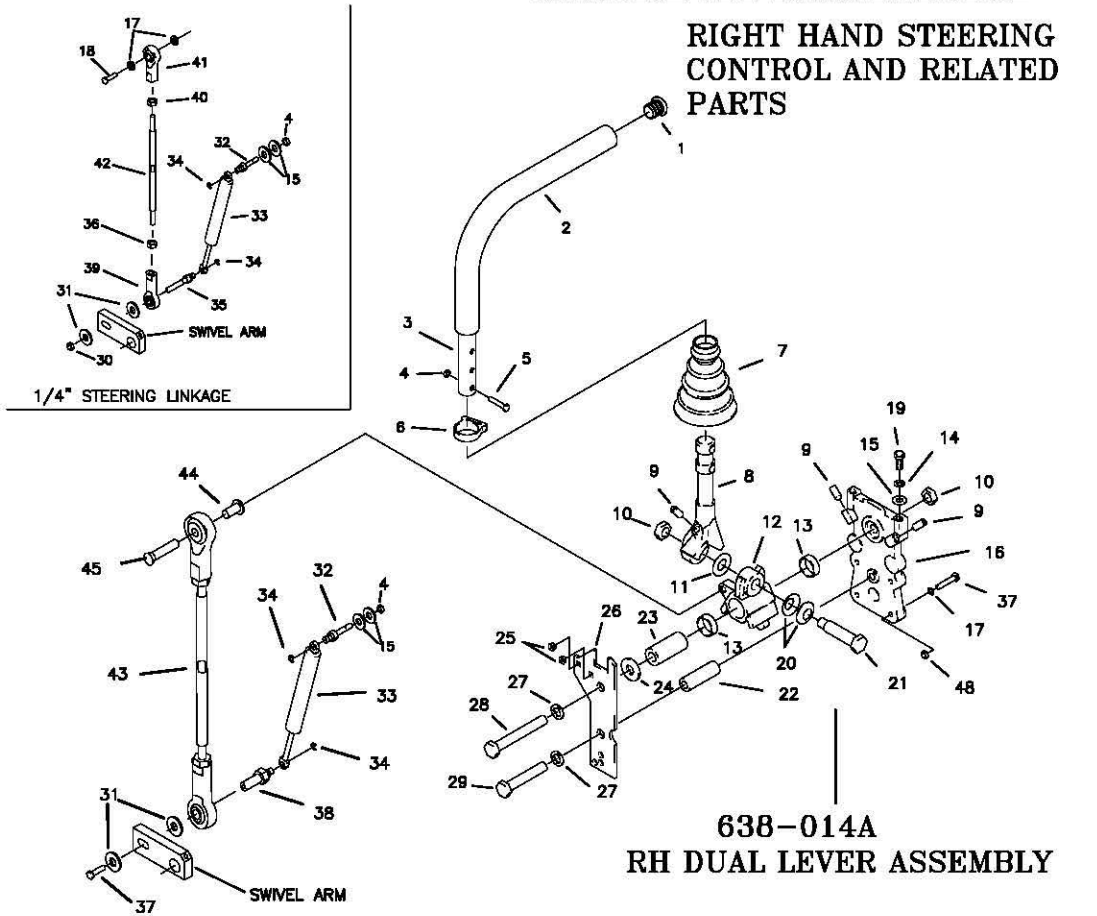
REF. NO.	PART NO.	QTY.	DESCRIPTION
1	659-026P	2	HYDRO SHIFT ROD
2	659-113P	2	UPPER LINK ROD
3	F-1716	4	1/4-20 X 1-1/4" GR. 5
4	625-030P	4	SWIVEL ARM
5	---	---	---
6	F-1015-17	2	5/16-18 X 1 1/2" GR.5
7	H-2465	2	1/4 SPACER
8	H-2466	2	5/16 SPACER
9	F-1158	4	1/4-20 LOCK NUT
10	H-1885	4	BALL JOINT, 1/4-28, RH THREAD
11	F-1716	4	1/4-20 X 1-1/2" GR. 5
12	F-1015-05	4	1/4-20 X 1" GR. 5
13	F-1125	2	5/16 X 18 STOVER NUT
14	F-1503	7	ROLL PIN, 3/16" X 1"
15	659-114P	2	LOWER LINKAGE ASSEMBLY

**JOYSTICK STEERING
CONTROL AND
RELATED PARTS
SR200**



REF NO.	PART NO.	QTY.	DESCRIPTION
1	F-1158	4	1/4-20 LOCK NUT
2	H-2465	4	1/2 X 1/4" SHOULDERWASHER
3	F-1015-05	2	1/4-20 X 1"
4	663-050P	1	STEERING LINKAGE
5	F-1009-02	4	1/4" FLAT WASHER
6	663-049P	1	UPPER STEERING LINKAGE
7	F-1716	2	1/4-20 X 1 1/2"
8	659-026P	2	HYDRO SHAFT ROD
9	F-1503	2	ROLL PIN 3/16 X 1"
10	625-030P	2	SWIVEL ARM
11	659-127P	1	LOWER STEERING LINKAGE

RIGHT HAND STEERING CONTROL AND RELATED PARTS

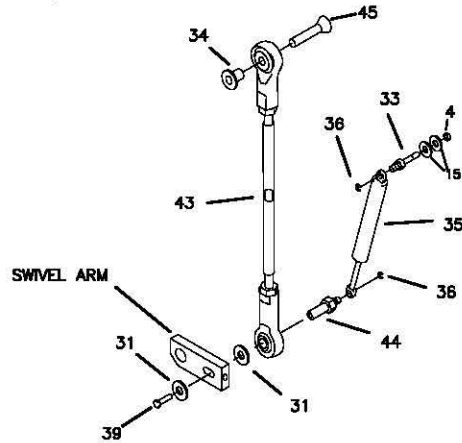
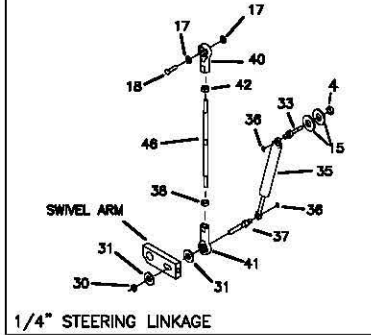
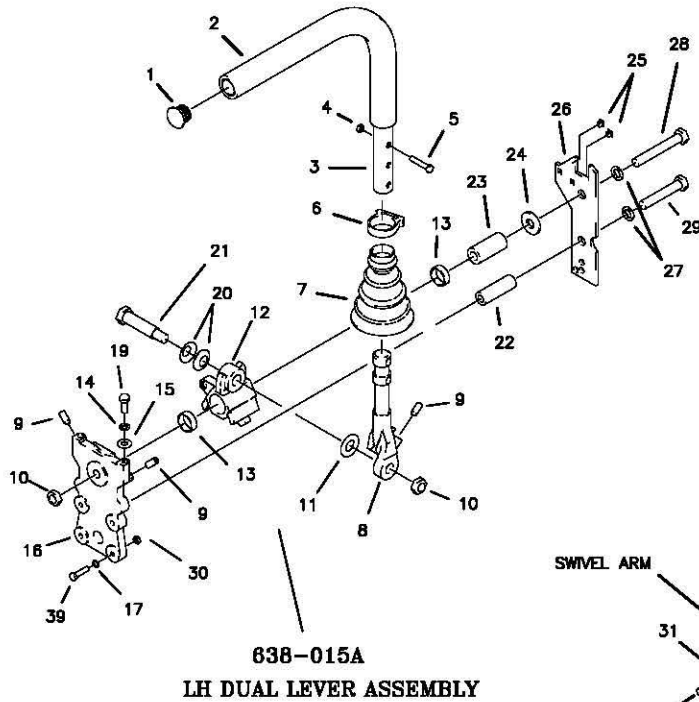


**638-014A
RH DUAL LEVER ASSEMBLY**

3/8" STEERING LINKAGE

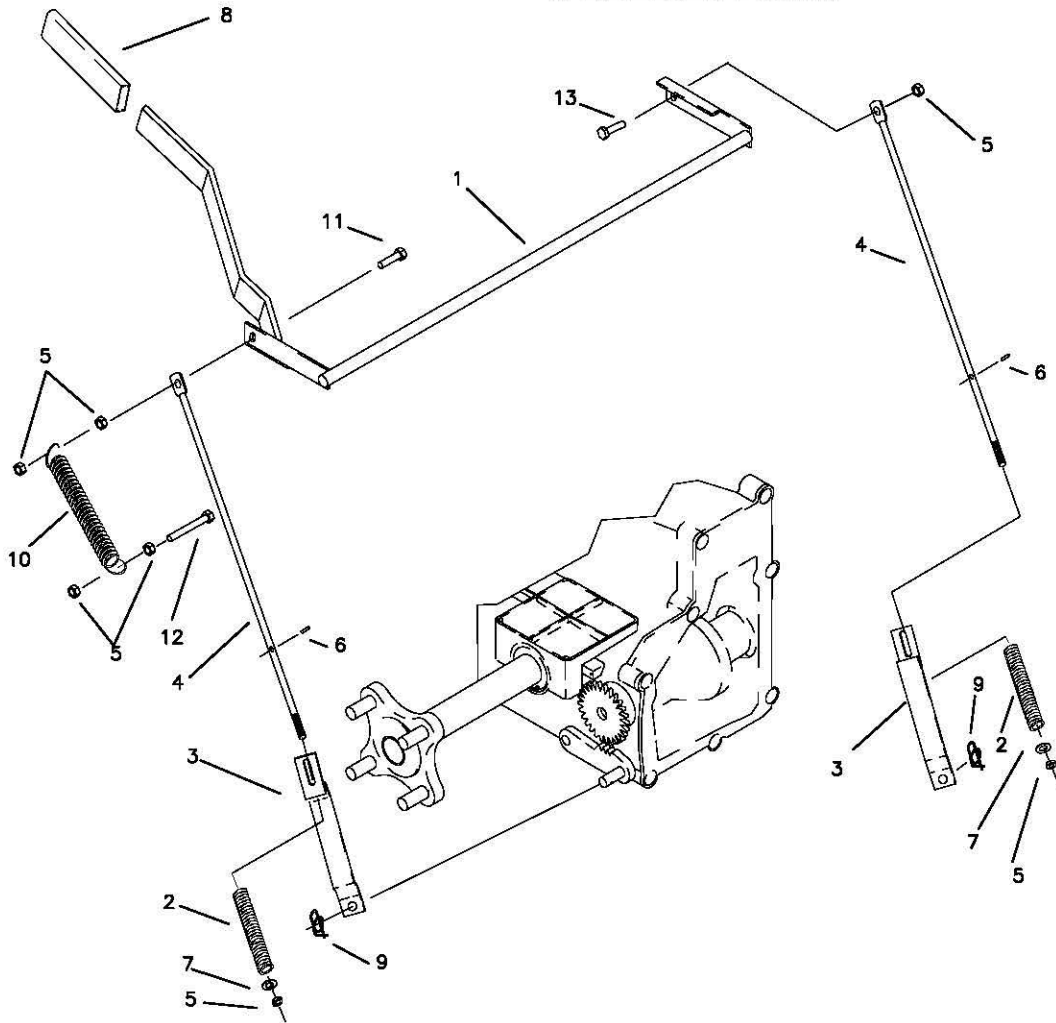
REF NO.	PART NO.	QTY.	DESCRIPTION	REF NO.	PART NO.	QTY.	DESCRIPTION
1	H-2080	1	END PLUG, 15/16" BLACK	24	625-072P	1	WASHER, FLAT
2	H-2079	1	FOAM GRIP, 17"	25	F-1847	2	GROMMET, #4 X 1/4" SQ.
3	642-004A	1	CONTROL LEVER ASSEMBLY	26	636-167P	1	TOP PLATE, DUALEVER
4	F-1125	3	5/16 LOCK NUT	27	F-1464	2	1/2" LOCK WASHER
5	F-1015-17	2	5/16-18 X 1-1/2" HHCS GR. 5	28	F-1828	1	1/2-13 X 3-1/2" HHCS GR. 5
6	H-2089	1	HOSE CLAMP	29	F-1439	1	1/2-13 X 3" HHCS GR. 5
7	H-2081	1	BOOT, TAPERED 1" CUFF	30	F-1158	2	1/4-20 LOCK NUT
8	625-063P	1	LEVER, DUALEVER	31	F-1009-01	2	1/4" FLAT WASHER
9	F-1842	3	SETSCREW, 5/16-18 X 3/4"	32	638-028P	1	DAMPER BOLT, 5/16-18 X 3/4"
10	F-1489	2	1/2-13 JAM NUT	33	H-2168	1	STEERING DAMPER
11	H-2116	1	WASHER, FIBER	34	F-1610	2	E-RING FOR 1/4" SHAFT
12	638-033P	1	PIVOT BLOCK, DUALEVER	35	638-029P	1	DAMPER BOLT, 1/4-20
13	D-3622	2	BEARING	36	F-1487	2	NUT, HEX 1/4-28 UNF
14	F-1019-02	2	5/16" LOCK WASHER	37	F-1539	3	1/4-20 X 1-1/4" HHCS GR. 5
15	F-1009-02	4	WASHER, FLAT STD. 5/16"	38	663-051P	1	DAMPER BOLT, 1/4-20 FEMALE
16	638-034P	1	BASE DUALEVER	39	H-1885	1	BALL JOINT W/1/4-28 THREAD
17	F-1019-01	11	1/4" LOCK WASHER	40	F-1814	1	LH 1/4-20 NUT
18	F-1015-05	1	1/4-20 X 1" HHCS GR. 5	41	H-2076	1	LH BALL JOINT
19	F-1546	1	5/16-18 X 3/4" HHCS GR. 5	42	659-027P	1	LINK ROD
20	H-2115	2	WASHER, SPRING	43	659-113P	1	LINK ROD ASSEMBLY
21	625-070P	1	SHOULDER BOLT, 5/8" OD	44	H-2465	1	1/2 X 1/4" SHOULDER WASHER
22	625-067P	1	BUSHING, STAND OFF	45	F-1974	1	1/4-20 X 1-1/4" SOCKHEAD BOLT
23	625-064P	1	BUSHING, PIVOT BLOCK	-	-	-	-

LEFT HAND STEERING
CONTROL AND RELATED
PARTS



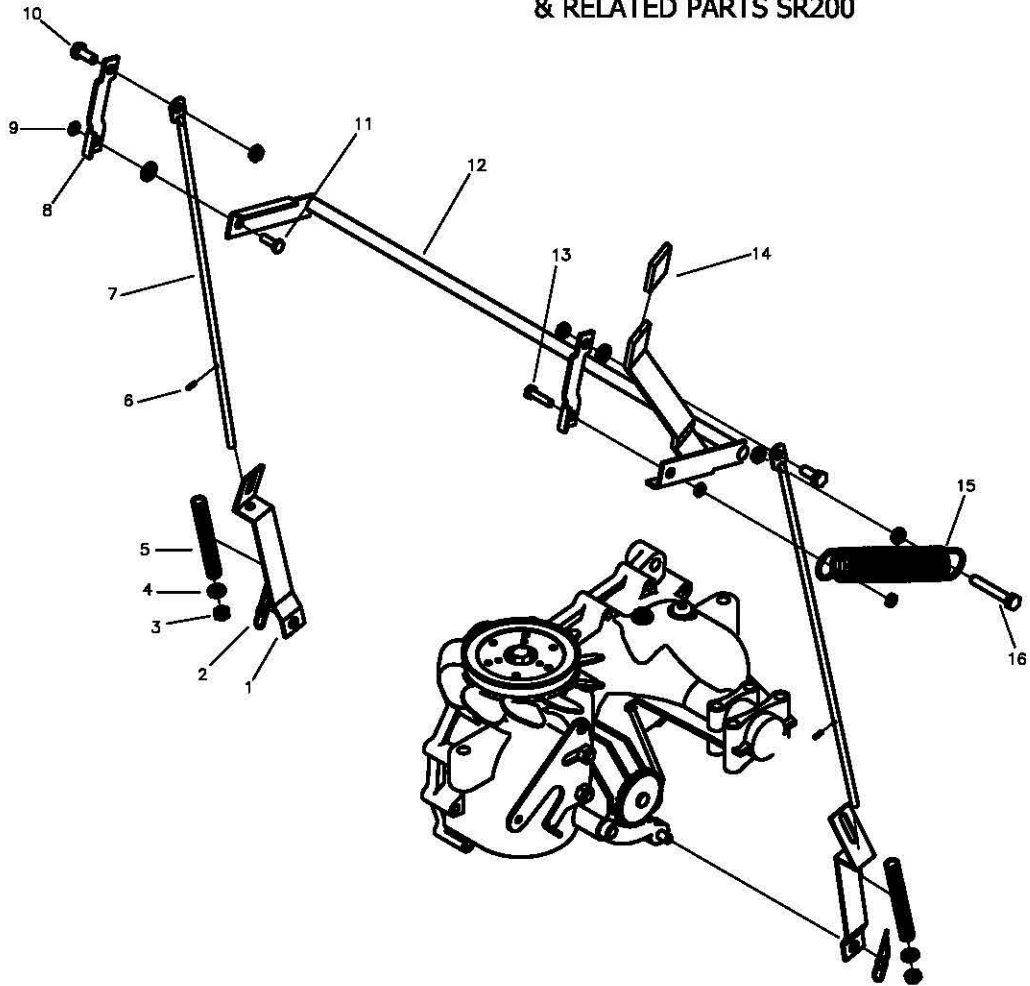
REF NO.	PART NO.	QTY.	DESCRIPTION	REF NO.	PART NO.	QTY.	DESCRIPTION
1	H-2080	1	END PLUG, 15/16" BLACK	24	625-072P	1	WASHER, FLAT
2	H-2079	1	FOAM GRIP, 17"	25	F-1847	2	GROMMET, #4 X 1/4" SQ.
3	642-004A	1	CONTROL LEVER ASSEMBLY	26	636-167P	1	TOP PLATE, DUALEVER
4	F-1125	3	5/16 LOCK NUT	27	F-1464	2	1/2" LOCK WASHER
5	F-1015-17	2	5/16-18 X 1-1/2" HHCS GR. 5	28	F-1828	1	1/2-13 X 3-1/2" HHCS GR. 5
6	H-2089	1	HOSE CLAMP	29	F-1439	1	1/2-13 X 3" HHCS GR. 5
7	H-2081	1	BOOT, TAPERED 1" CUFF	30	F-1158	5	1/4-20 LOCK NUT
8	625-063P	1	LEVER, DUALEVER	31	F-1009-01	2	1/4" FLAT WASHER
9	F-1842	3	SETScrew, 5/16-18 X 3/4"	32	F-1011-01	1	1/4-20 PLAIN NUT
10	F-1489	2	1/2-13 JAM NUT	33	638-028P	1	DAMPER BOLT, 5/16-18 X 3/4"
11	H-2116	1	WASHER, FIBER	34	H-2465	1	SHOULDER WASHER
12	638-033P	1	PIVOT BLOCK, DUALEVER	35	H-2168	1	STEERING DAMPER
13	D-3622	2	BEARING	36	F-1610	2	E-RING FOR 1/4" SHAFT
14	F-1019-02	2	5/16" LOCK WASHER	37	638-029P	1	DAMPER BOLT, 1/4-20
15	F-1009-02	4	WASHER, FLAT STD. 5/16"	38	F-1487	1	NUT, HEX 1/4-28 UNF
16	638-034P	1	BASE DUALEVER	39	F-1539	3	1/4-20 X 1-1/4" HHCS GR. 5
17	F-1019-01	11	1/4" LOCK WASHER	40	H-2076	1	LH BALL JOINT
18	F-1015-05	1	1/4-20 X 1" HHCS GR. 5	41	H-1885	1	BALL JOINT W/1/4-28 THREAD
19	F-1546	1	5/16-18 X 3/4" HHCS GR. 5	42	F-1814	1	LH 1/4-24 NUT
20	H-2115	2	WASHER, SPRING	43	659-113P	1	STEERING LINKAGE
21	625-070P	1	SHOULDER BOLT, 5/8" OD	44	663-051P	1	DAMPER BOLT, 1/4-20 FEMALE
22	625-067P	1	BUSHING, STAND OFF	45	F-1974	1	1/4-20 X 1-1/4" SOCKHEAD BOLT
23	625-064P	1	BUSHING, PIVOT BLOCK	46	659-027P	1	STEERING LINKAGE

PARKING BRAKE ASSEMBLY
& RELATED PARTS



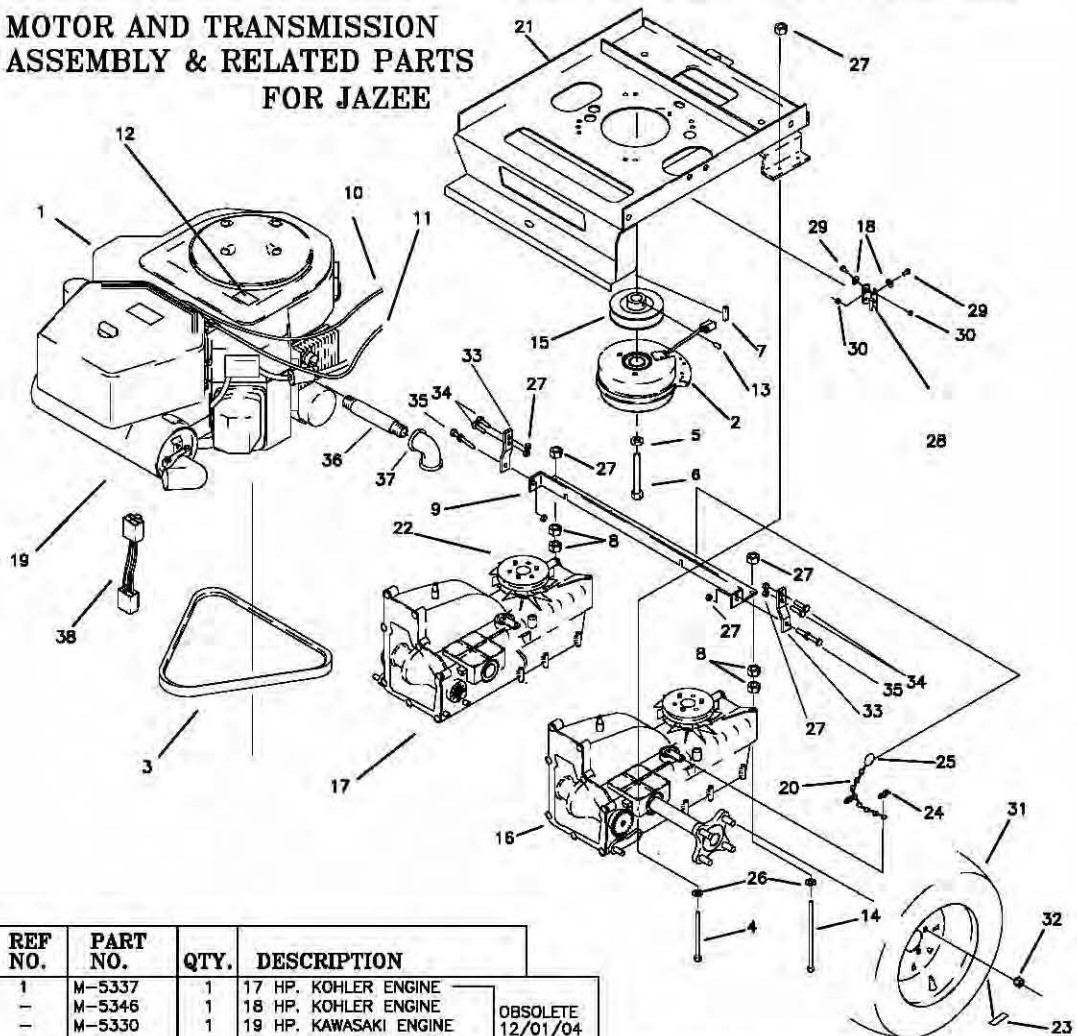
REF NO.	PART NO.	QTY.	DESCRIPTION
1	659-010W	1	BRAKE ROD WELDMENT
2	H-1785	2	COMPRESSION SPRING
3	659-013P	2	LOWER BRAKE LINK
4	H-2206	2	BRAKE LINK ROD
5	F-1125	7	5/16-18 LOCK NUT
6	H-1800	2	3/32 X 3/8" ROLL PIN
7	F-1009-02	2	5/16 FLAT WASHER
8	H-1926	1	HANDLE GRIP
9	F-1492	2	RUE RING
10	H-1635	1	SPRING EXTENSION, 3/4 X 4"
11	F-1015-15	1	5/16-18 X 1"
12	F-1015-19	1	5/16-18 X 2"
13	F-1546	1	5/16-18 X 3/4"

**PARKING BRAKE ASSEMBLY
& RELATED PARTS SR200**



REF NO.	PART NO.	QTY.	DESCRIPTION
1	659-013P	2	LOWER BRAKE LINK
2	F-1492	2	RIVE RING
3	F-1125	6	5/16-18 LOCK NUT
4	F-1009-02	4	5/16" FLAT WASHER
5	H-2426	2	COMPRESSION SPRING
6	H-1800	2	3/32 X 3/8" ROLL PIN
7	H-2206	2	BRAKE LINK ROD
8	659-118P	2	BRAKE ANCHOR ADAPTER
9	F-1158	3	1/4-20 LOCK NUT
10	F-1546	2	5/16-18 X 3/4"
11	F-1015-03	1	1/4-20 X 3/4"
12	659-010W	1	BRAKE ROD
13	F-1015-05	1	1/4-20 X 1"
14	H-1926	1	BRAKE HANDLE
15	H-1635	1	3/4 X 4" EXT. SPRING
16	F-1015-19	1	5/16-18 X 2"

**MOTOR AND TRANSMISSION
ASSEMBLY & RELATED PARTS
FOR JAZEE**

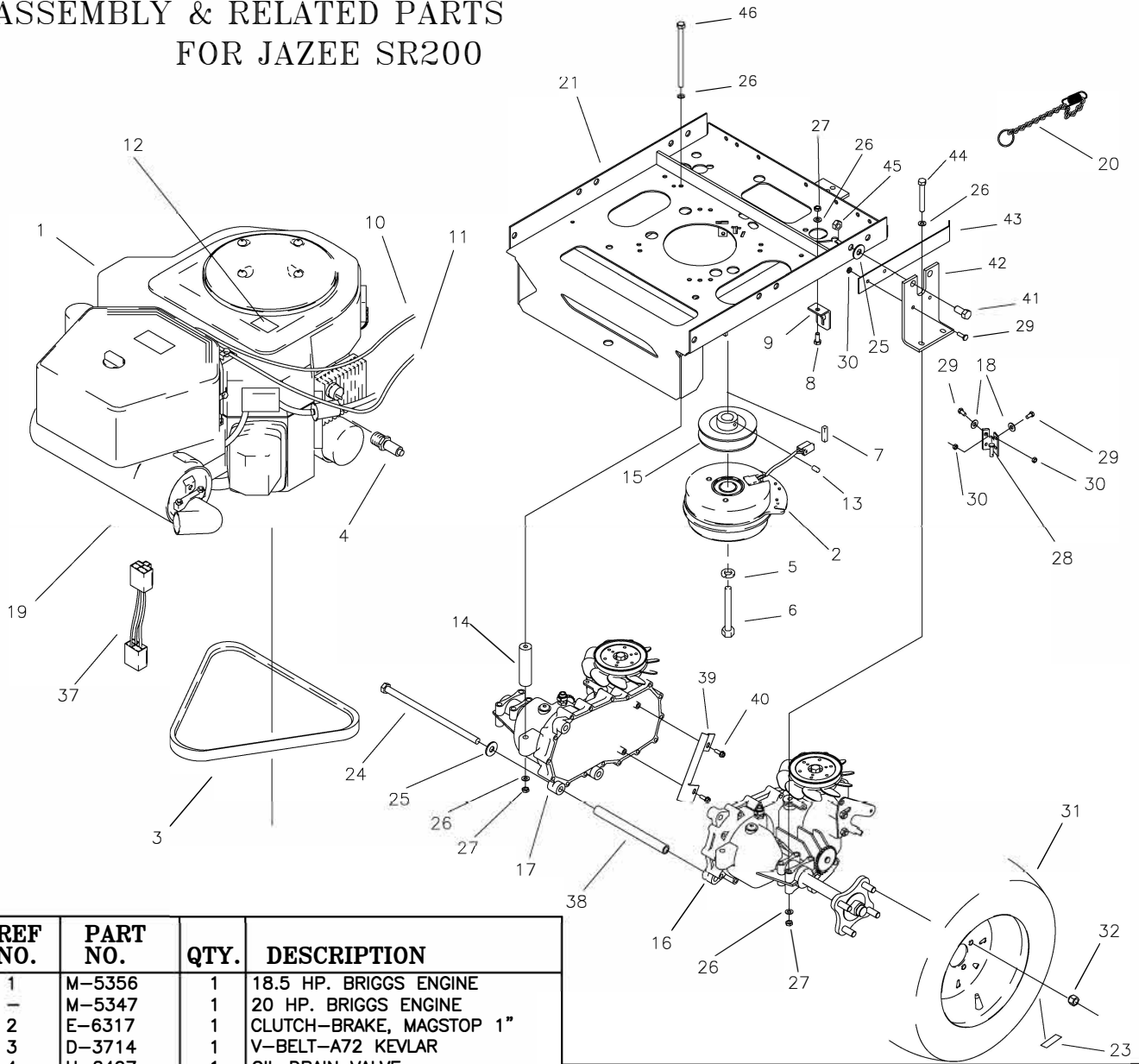


REF NO.	PART NO.	QTY.	DESCRIPTION
1	M-5337	1	17 HP. KOHLER ENGINE
—	M-5346	1	18 HP. KOHLER ENGINE
—	M-5330	1	19 HP. KAWASAKI ENGINE
—	M-5342	1	20 HP. KOHLER ENGINE
—	M-5347	1	20 HP. BRIGGS ENGINE
2	E-6317	1	CLUTCH-BRAKE, MAGSTOP 1"
3	D-3728	1	V-BELT-A77 KEVLAR
4	F-1893	8	5/16-18 X 2 1/2", GR.5
5	F-1019-04	1	7/16 LOCK WASHER
6	F-1904	1	7/16-20 X 2-1/2"
7	621-113P	1	KEY, 1/4 SQ. X 1-1/4"
8	F-1011-03	4	3/8-16 HEX NUT
9	659-031P	1	FRONT CROSS BRACE
10	H-2235	1	CHOKE CABLE, 19 & 20 HP
—	H-2403	—	CHOKE CABLE, 17 & 18 HP.
11	H-2236	1	THROTTLE CABLE, 19 & 20 HP.
—	H-2402	—	THROTTLE CABLE, 17 & 18 HP.
12	P-10077	1	DECAL, "CLEAN"
13	F-1228	3	SETSCREW, 1/4" X 1/4"
14	F-1950	4	5/16-18 X 3 1/4" GR.5
15	D-3726	1	MOTOR PULLEY, 3.75"
16	D-3725-01	1	IZT TRANSAXLE HHDRO (RH)
17	D-3725-02	1	IZT TRANSAXLE HYDRO (LH)
18	F-1009-01	2	1/4" FLAT WASHER
19	H-2284	1	MUFFLER ASSEMBLY
20	659-053P	2	FREEWHEEL CHAIN W/SPRING

OBsolete
12/01/04

REF NO.	PART NO.	QTY.	DESCRIPTION
21	659-060W	1	MOTOR MOUNT
22	H-2410	2	FAN, 6" X 10 BLADES
23	P-11384	2	DECAL, TIRE PRESSURE, 12 PSI
24	F-1482	2	RUE RING, 5/16"
25	H-2345	2	1 1/4" SPLIT RING
26	F-1009-01	12	1/4" FLAT WASHERS
27	F-1125	18	5/16-18 STOVER NUT
28	859-015W	1	CLUTCH STOP WELDMENT
29	F-1015-02	2	1/4-20 X 5/8" GR. 5
30	F-1158	2	1/4-20 LOCK NUTS
31	D-3729	2	TIRE, 18 X 8.5-8
32	F-1489	8	LUG NUT, 1/2 X 20
33	659-032P	2	HYDRO SUPPORT STRAP
34	F-1015-15	4	5/16-18 X 1", GR.5
35	F-1015-19	1	5/16-18 X 2", GR.5
36	H-1082	1	PIPE, 3/8 X 3"
—	H-1451	1	PIPE, 3/8 X 2 1/2"
37	H-1218	1	ELBOW, 3/8 X 90°
38	E-6383	1	BRIGGS ENGINE HARNESS ADAPTOR

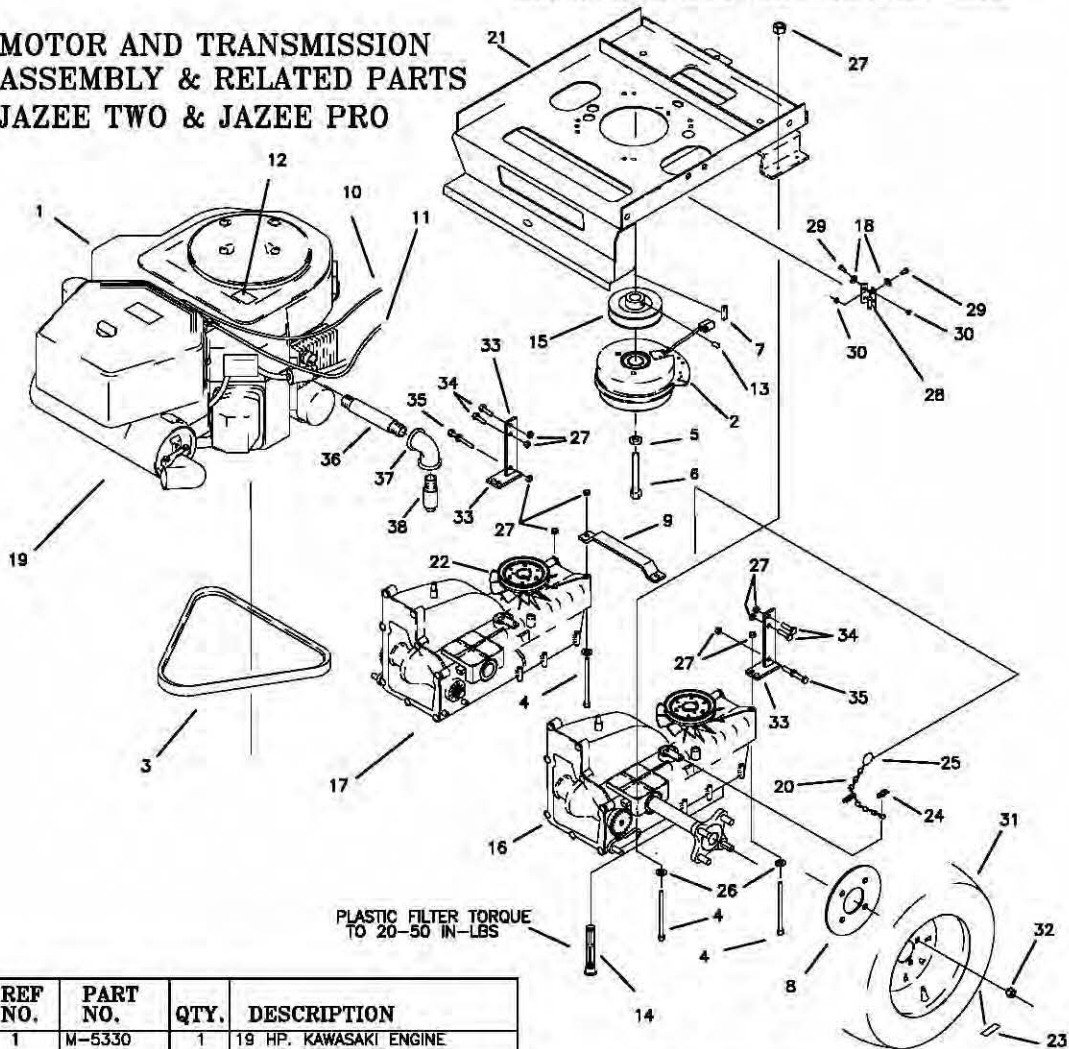
MOTOR AND TRANSMISSION ASSEMBLY & RELATED PARTS FOR JAZEE SR200



REF NO.	PART NO.	QTY.	DESCRIPTION
1	M-5356	1	18.5 HP. BRIGGS ENGINE
-	M-5347	1	20 HP. BRIGGS ENGINE
2	E-6317	1	CLUTCH-BRAKE, MAGSTOP 1"
3	D-3714	1	V-BELT-A72 KEVLAR
4	H-2497	1	OIL DRAIN VALVE
5	F-1019-04	1	7/16 LOCK WASHER
6	F-1904	1	7/16-20 X 2-1/2"
7	621-113P	1	KEY, 1/4 SQ. X 1-1/4"
8	F-1546	2	5/16-18 X 3/4" BOLT
9	659-119P	2	FREE WHEEL ANCHOR
10	H-2287	1	CHOKE CABLE, 20 HP
-	H-2403	-	CHOKE CABLE, 18.5 HP
11	H-2236	1	THROTTLE CABLE, 20 HP
-	H-2402	-	THROTTLE CABLE, 18.5 HP
12	P-10077	1	DECAL, "CLEAN"
13	F-1228	1	SETSCREW, 1/4" X 1/4"
14	659-121P	2	REAR HYDRO SPACER
15	D-3726	1	MOTOR PULLEY, 3.75"
16	D-3783-01	1	EZT TRANSAXLE HHDR0 (RH)
17	D-3783-02	1	EZT TRANSAXLE HYDRO (LH)
18	F-1009-01	2	1/4" FLAT WASHER
19	H-2464	1	MUFFLER ASSEMBLY
20	659-053P	2	FREEWHEEL CHAIN W/SPRING
21	659-124W	1	MOTOR MOUNT
22	H-2410	2	FAN, 6" X 10 BLADES
23	P-11384	2	DECAL, TIRE PRESSURE, 12 PSI
24	F-1989	3	7/16-14 X 11" BOLT
25	F-1009-05	5	1/2" FLAT WASHER

REF NO.	PART NO.	QTY.	DESCRIPTION
26	F-1009-02	14	5/16" FLAT WASHER
27	F-1125	8	5/16-18 LOCK NUT
28	659-015W	1	CLUTCH STOP WELDMENT
29	F-1015-02	6	1/4-20 X 5/8" GR. 5
30	F-1158	6	1/4-20 LOCK NUTS
31	D-3729	2	TIRE, 18 X 8.5-8
32	F-1499	2	LUG NUT, 1/2 X 20
33	659-032P	2	HYDRO SUPPORT STRAP
34	F-1015-15	4	5/16-18 X 1", GR.5
35	F-1015-19	1	5/16-18 X 2", GR.5
36	H-1082	1	PIPE, 3/8 X 3"
37	E-6383	1	BRIGGS ENGINE HARNESS ADAPTOR
38	659-120P	3	HYDRO BRACE
39	659-117P	1	BELT GUARD
40	F-1341	2	1/4-20 X 1/2" ROLLING THREAD
41	F-1759	2	1/2-13 X 1" BOLT
42	659-116P	2	HYDRO MOUNT BRACE
43	659-125P	2	FAN SHROUD
44	F-1544	4	5/16-18 X 3" BOLT
45	F-1005-05	2	FAN SHROUD
46	F-1652	2	5/16-18 X 6" BOLT

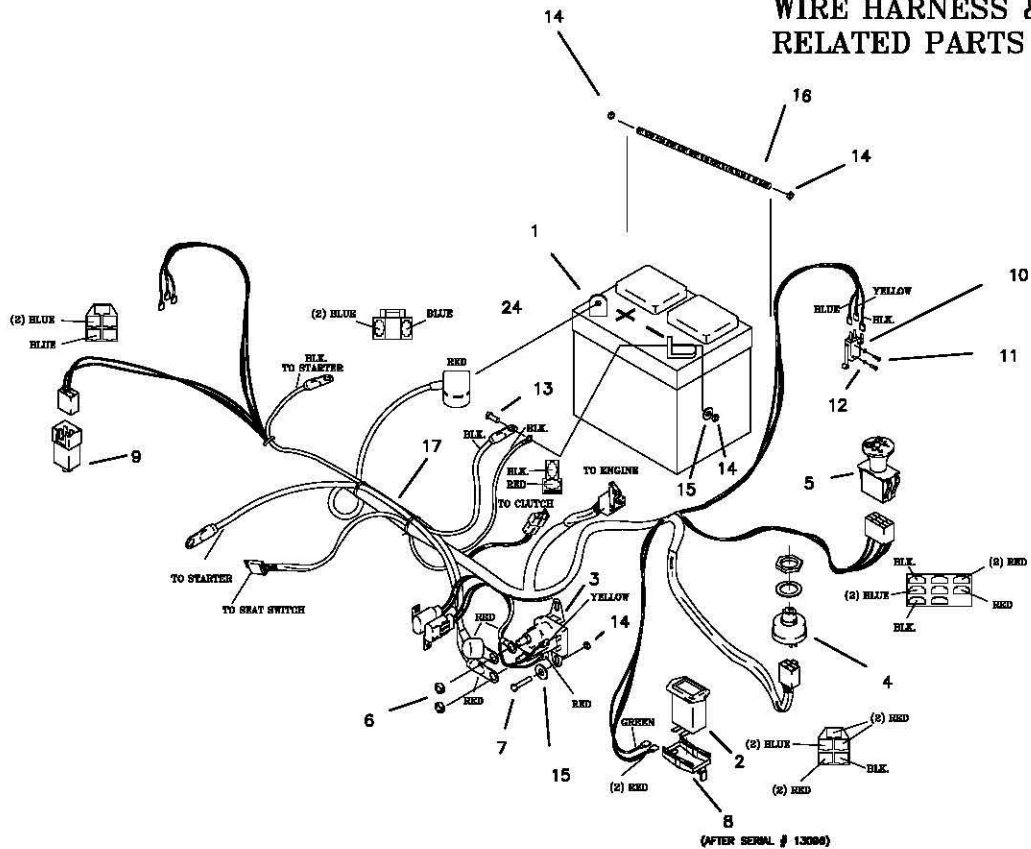
**MOTOR AND TRANSMISSION ASSEMBLY & RELATED PARTS
JAZEE TWO & JAZEE PRO**



REF NO.	PART NO.	QTY.	DESCRIPTION
1	M-5330	1	19 HP. KAWASAKI ENGINE
-	M-5342	1	20 HP. KOHLER ENGINE
-	M-5359	1	23 HP. KOHLER ENGINE, SR300
-	M-5358	1	23 HP. BRIGGS ENGINE, SR350
2	E-6317	1	CLUTCH-BRAKE, MAGSTOP 1"
3	D-3728	1	V-BELT-A77 KEVLAR
4	F-1893	8	5/16-18 X 2 1/2", GR.5
5	F-1019-04	1	7/16 LOCK WASHER
6	F-1904	1	7/16-20 X 2-1/2"
7	B21-113P	1	KEY, 1/4 SQ. X 1-1/4"
8	659-092P	2	WHEEL BACKING PLATE
9	659-086P	1	TORQUE STRAP
10	H-2235	1	CHOKE CABLE, 19 & 20 HP
11	H-2236	1	THROTTLE CABLE, 19 & 20 HP.
12	P-10077	1	DECAL, "CLEAN"
13	F-1228	3	SETScrew, 1/4" X 1/4"
14	H-2453	2	CHARGE IZT HYDRO FILTER
15	D-3726	1	MOTOR PULLEY, 3.75"
16	D-3763-01	1	IZT TRANSAXLE HYDRO (RH)
17	D-3763-02	1	IZT TRANSAXLE HYDRO (LH)
18	F-1009-01	2	1/4" FLAT WASHER
19	H-2284	1	MUFFLER ASSEMBLY, KAWASAKI
-	H-2515	1	MUFFLER ASSEMBLY, BRIGGS
20	659-053P	2	FREEWHEEL CHAIN W/SPRING

REF NO.	PART NO.	QTY.	DESCRIPTION
21	659-050W	1	MOTOR MOUNT
22	H-2455	2	FAN, 7" X 10 BLADES
23	P-11384	2	DECAL, TIRE PRESSURE, 12 PSI
24	F-1492	2	RUE RING, 5/16"
25	H-2345	2	1 1/4" SPLIT RING
26	F-1009-01	12	1/4" FLAT WASHERS
27	F-1125	18	5/16-18 STOVER NUT
28	659-015W	1	CLUTCH STOP WELDMENT
29	F-1015-02	2	1/4-20 X 5/8" GR. 5
30	F-1158	2	1/4-20 LOCK NUTS
31	D-3353	2	TIRE, 20 X 10
32	F-1499	8	LUG NUT, 1/2 X 20
33	659-087W	2	TORQUE LEG WELDMENT
34	F-1015-15	4	5/16-18 X 1", GR.5
35	F-1015-19	1	5/16-18 X 2", GR.5
36	H-1082	1	PIPE, 3/8 X 3"
	H-1451	1	PIPE, 3/8 X 2 1/2"
37	H-1218	1	ELBOW, 3/8 X 90°
38	H-2497	1	OIL DRAIN VALVE

WIRE HARNESS & RELATED PARTS



REF NO.	PART NO.	QTY.	DESCRIPTION
1	E-5812	1	BATTERY
2	E-5878	1	HOUR METER
3	E-8054	1	SOLENOID
4	E-5873	1	START SWITCH
5	E-6296	1	CLUTCH SWITCH
6	F-1567	2	5/16-24 NUT
7	F-1015-02	2	1/4-20 X 5/8" GR. 5
8	E-6369	1	RETAINER CLIP
9	E-6297	1	BRAKE SWITCH
	E-6074	1	SWITCH, SPDT MINI
	F-1396	2	4-40 X 3/4 SCREW
	F-1621	2	STAR WASHER
10	F-1538	2	1/4-20 X 3/4" GR. 5
11	F-1158	5	1/4-20 LOCK NUT
12	F-1009-01	4	1/4" FLAT WASHER
13	659-048P	1	BATTERY HOLD DOWN
14	E-6340	1	WIRE HARNESS
15	F-1535	2	6-32 LOCK NUT
16	E-6281	1	COVER (KEY SWITCH)
17			-NOT SHOWN-
	E-6307	1	OIL PRESSURE SWITCH (KAWASAKI)
			-NOT SHOWN-