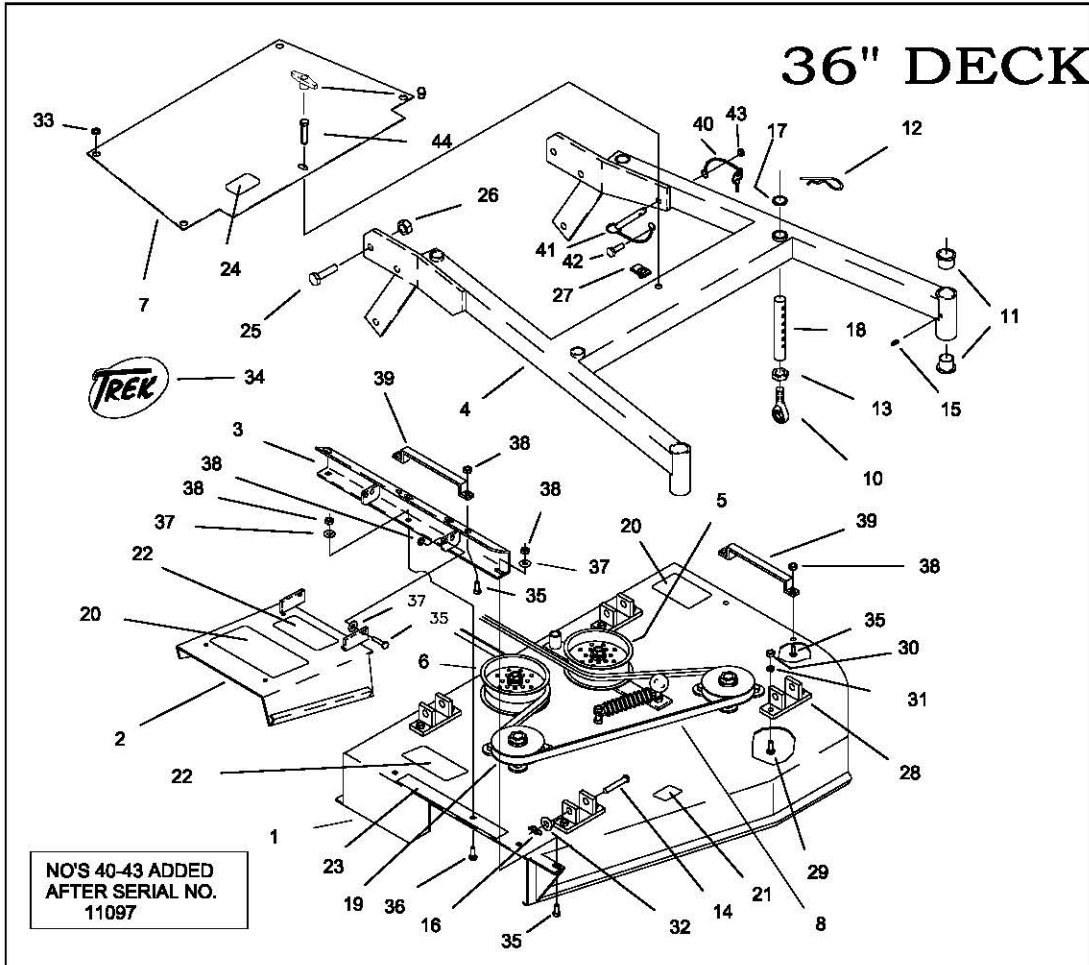


TABLE OF CONTENTS

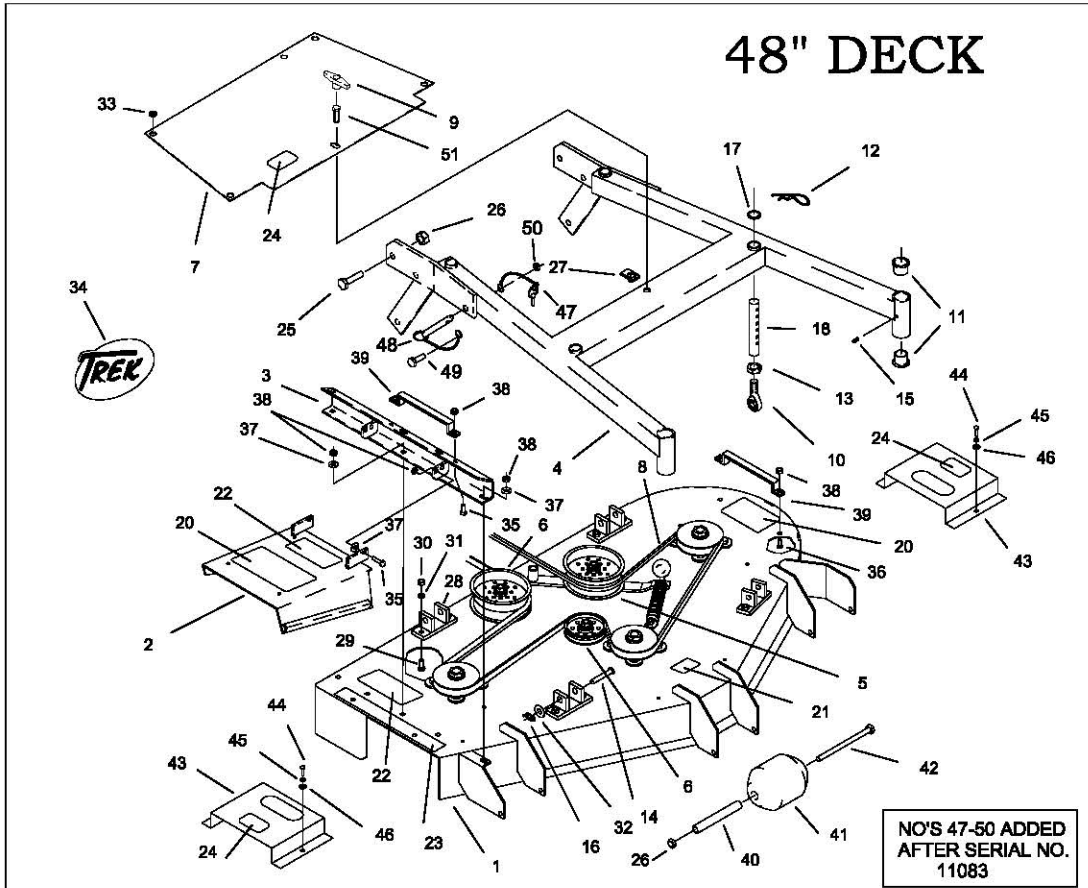
<u>DESCRIPTION</u>	<u>PAGE NO.</u>
36" DECK AND RELATED PARTS _____	1
48" DECK AND RELATED PARTS _____	2
CASTER WHEEL ASSEMBLY _____	3
DECK SPINDLE ASSEMBLY _____	4
DECK IDLERS AND RELATED PARTS _____	5
DRIVE UNIT _____	6
DRIVE WHEELS _____	7
BRAKE LINKAGE AND RELATED PARTS _____	8
HANDLES _____	9
WIRE HARNESS _____	10
FUEL TANK ASSEMBLY _____	11

36" DECK



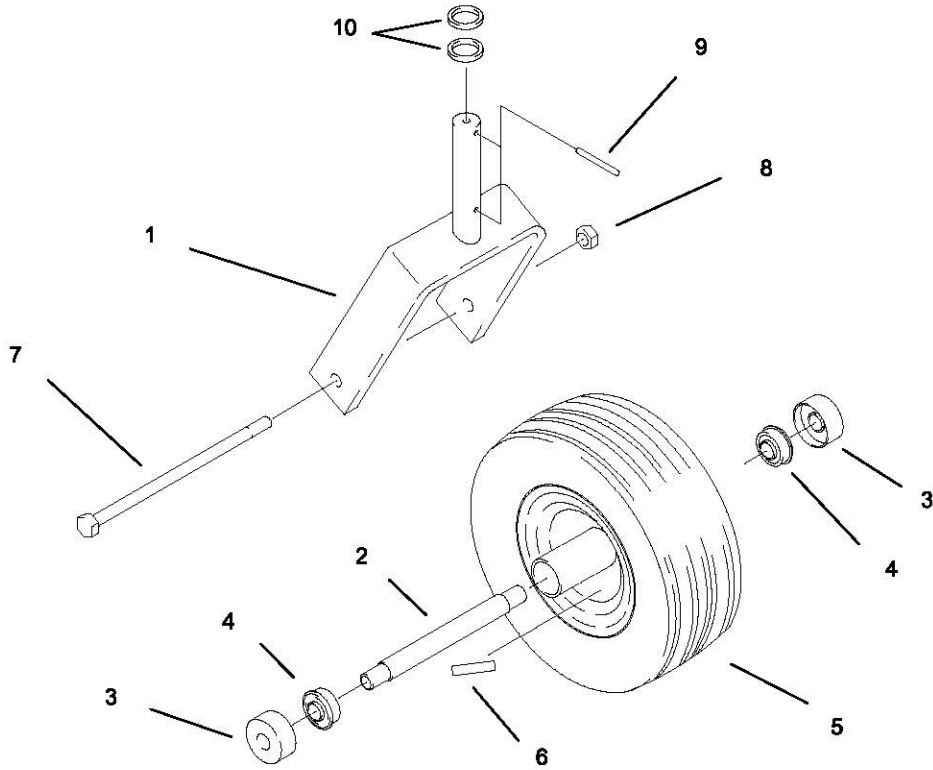
REF. NO.	PART NO.	QTY.	DESCRIPTION	REF. NO.	PART NO.	QTY.	DESCRIPTION
1	649-050A	1	36" DECK WLDT. W/DECALS	23	P-10122	1	DECAL, MISSING CHUTE
2	649-054A	1	CHUTE W/DECALS	24	P-10935	1	DECAL, ROTATING
3	649-009W	1	OUTLET STIFFENER	25	F-1386	6	1/2-13 X 1-1/4 GR. 5
4	649-031W	1	36" DECK FRAME WLDT.	26	F-1005-05	6	1/2" LOCK NUT
5		1	SINGLE IDLER ASS'Y (SEE PAGE 5)	27	F-1866	1	U-NUT, 5/16"
6		1	DRIVE IDLER ASS'Y (SEE PAGE 5)	28	649-020W	4	DECK HANGER WLDT.
7	649-055A	1	36" BELT COVER W/DECALS	29	F-1672	8	CARRIAGE BOLT, 3/8-16 X 1-1/4"
8	D-3684	1	BELT, A-84 (SPECIAL) KEVLAR	30	F-1239	8	3/8" LOCK NUT
9	F-1921	1	"T" HANDLE KNOB	31	F-1019-03	8	3/8" LOCK WASHER
10	H-2349	4	ROD END BALL JOINT	32	F-1009-05	2	1/2" FLAT WASHER
11	H-2350	4	OILITE FLANGED BUSHING	33	E-5038-01	4	GROMMET
12	H-2359	4	HAIRPIN COTTER PIN	34	P-11581	1	DECAL, TREK
13	F-1462	2	1/2-20 JAM NUT	35	F-1015-15	7	5/16-18 X 1" GR. 5
14	F-1817	2	CLEVIS PIN, 1/2 X 2"	36	F-1671	4	CARRIAGE BOLT, 5/16 X 3/4
15	H-1056	2	GREASE FITTING	37	F-1009-02	6	5/16 FLAT WASHER
16	H-2239	2	1/2" RUE RING	38	F-1125	10	5/16 LOCK NUT
17	649-027P	2	THRUST WASHER	39	649-035P	2	LIFT HANDLE
18	649-028P	4	SHAFT, DECK HANGER	40	F-1835	2	LINCH PIN ASSEMBLY
19		1	SPINDLE ASS'Y (SEE PAGE 4)	41	F-1836	2	CLEVIS PIN ASSEMBLY
20	P-10941	2	DECAL, MULTI-PERIL	42	F-1394	2	3/8-16 X 1", GR. 5
21	P-10947	1	DECAL, GREASE	43	F-1005-03	2	3/8 STOVER NUT
22	P-10937	2	DECAL, WARNING	44	F-1110	1	5/16-18 X 1" W/ NYLON PATCH

48" DECK



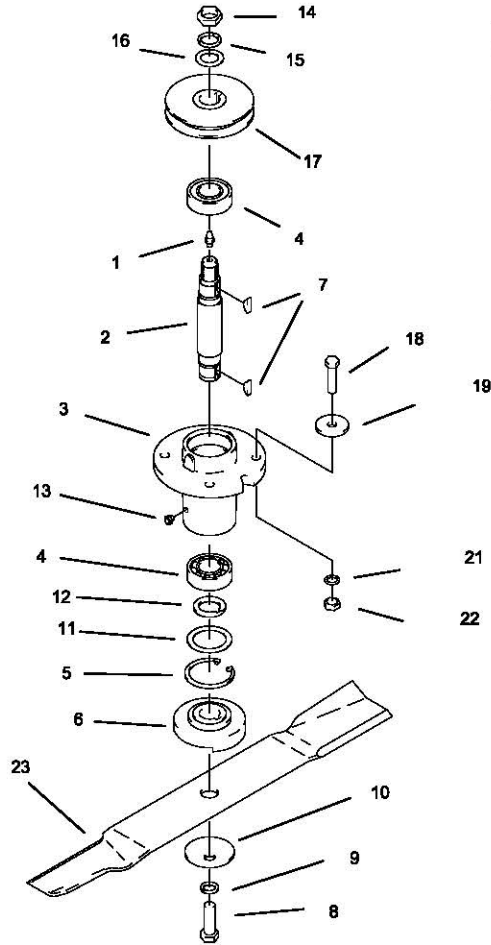
REF NO.	PART NO.	QTY.	DESCRIPTION	REF NO.	PART NO.	QTY.	DESCRIPTION
1	649-051A	1	48" DECK WLDT. W/DECALS	26	F-1005-05	9	1/2" LOCK NUT
2	649-054A	1	CHUTE W/DECALS	27	F-1866	1	U-NUT, 5/16"
3	649-012W	1	OUTLET STIFFENER	28	649-020W	4	DECK HANGER WLDT.
4	649-030W	1	48" DECK FRAME WLDT.	29	F-1672	8	CARRIAGE BOLT, 3/8-18 X 1-1/4"
5		1	SINGLE IDLER ASS'Y (SEE PAGE 5)	30	F-1239	11	3/8" LOCK NUT
6		1	DRIVE IDLER ASS'Y (SEE PAGE 5)	31	F-1019-03	8	3/8" LOCK WASHER
7	649-056A	1	48" BELT COVER W/DECAL	32	F-1009-05	4	1/2" FLAT WASHER
8	D-3606	1	BELT, A-120 (SPECIAL) KEVLAR	33	E-5038-01	4	GROMMET
9	F-1921	1	"T" HANDLE KNOB	34	P-11561	1	DECAL, TREK
10	H-2349	4	ROD END BALL JOINT	35	F-1015-15	7	5/16-18 X 1" GR. 5
11	H-2350	4	OILITE FLANGED BUSHING	36	F-1671	4	CARRIAGE BOLT, 5/16 X 3/4
12	H-2359	4	HAIRPIN COTTER PIN	37	F-1009-02	6	5/16 FLAT WASHER
13	F-1462	4	1/2-20 JAM NUT	38	F-1125	10	5/16 LOCK NUT
14	F-1817	2	CLEVIS PIN, 1/2 X 2"	39	649-035P	2	LIFT HANDLE
15	H-1056	2	GREASE FITTING	40	609-183P	3	WHEEL BUSHING
16	H-2239	2	1/2" RUE RING	41	H-1948	3	ROLLER, 3-3/4 DIA. X 4-13/16
17	649-027P	2	THRUST WASHER	42	F-1741	3	3/8-16 X 6" GR. 5
18	649-028P	4	SHAFT, DECK HANGER	43	609-080P	2	BELT COVER
19		1	SPINDLE ASS'Y (SEE PAGE 4)	44	F-1538	4	1/4-20 X 3/4 GR. 5
20	P-10941	2	DECAL, MULTI-PERIL	45	F-1018-01	4	1/4" FLAT WASHER
21	P-10947	1	DECAL, GREASE	46	F-1009-01	4	1/4" FLAT WASHER
22	P-10937	2	DECAL, WARNING	47	F-1835	2	LINCH PIN ASSEMBLY
23	P-10122	1	DECAL, MISSING CHUTE	48	F-1836	2	CLEVIS PIN ASSEMBLY
24	P-10935	3	DECAL, ROTATING	49	F-1394	2	3/8-16 X 1", GR. 5
25	F-1386	6	1/2-13 X 1-1/4 GR. 5	50	F-1005-03	2	3/8 STOVER NUT
				51	F-1110	1	5/16-18 X 1" W/ NYLON PATCH

CASTER WHEEL ASSEMBLY



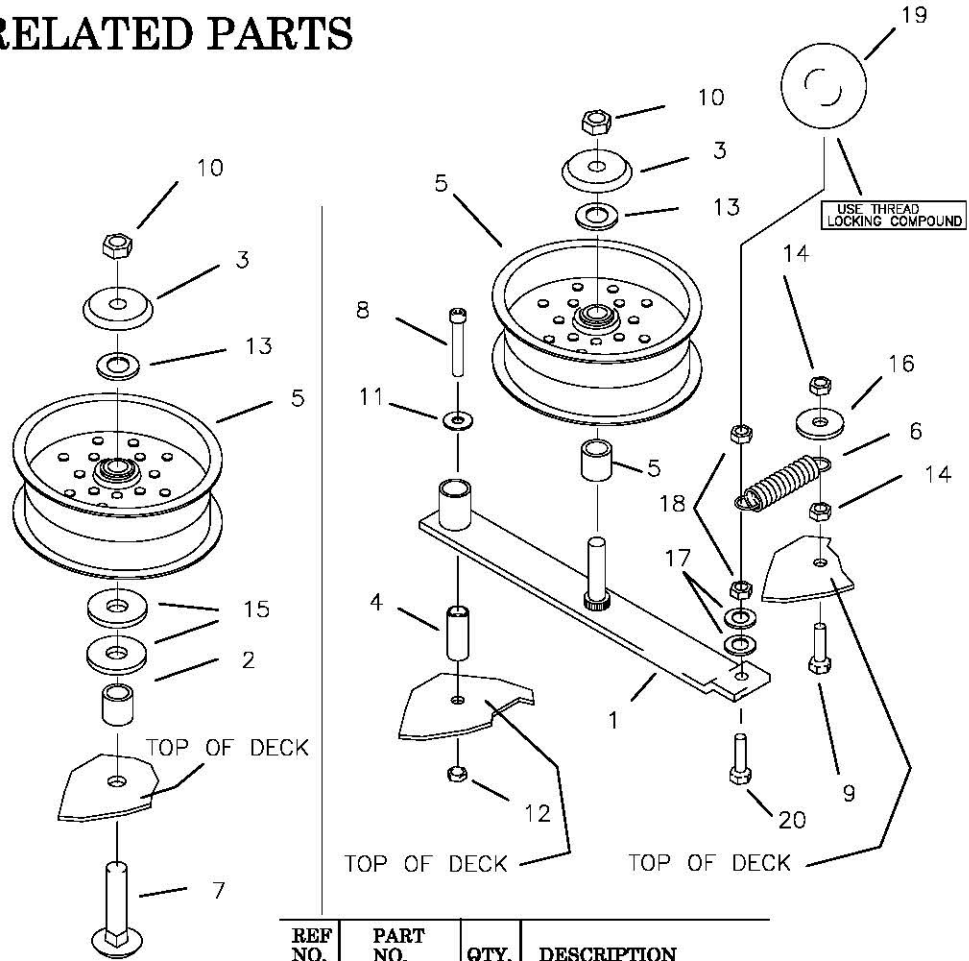
REF NO.	PART NO.	QTY.	DESCRIPTION
1	649-018W	2	CASTER WELDMENT
2	622-121P	2	BEARING SPACER
3	611-135P	4	BEARING SHIELD
4	D-3432	4	BEARING
5	D-3679	2	TIRE-WHEEL ASSEMBLY
6	P-10877	2	DECAL, TIRE PRESSURE
7	F-1659	2	1/2-13 X 5-1/2" GR. 5 BOLT BOLT
8	F-1005-05	2	1/2-13 LOCK NUT
9	F-1922	4	3/16" SPIRAL ROLL PIN
10	649-027P	4	THRUST WASHER

DECK SPINDLE ASSEMBLY



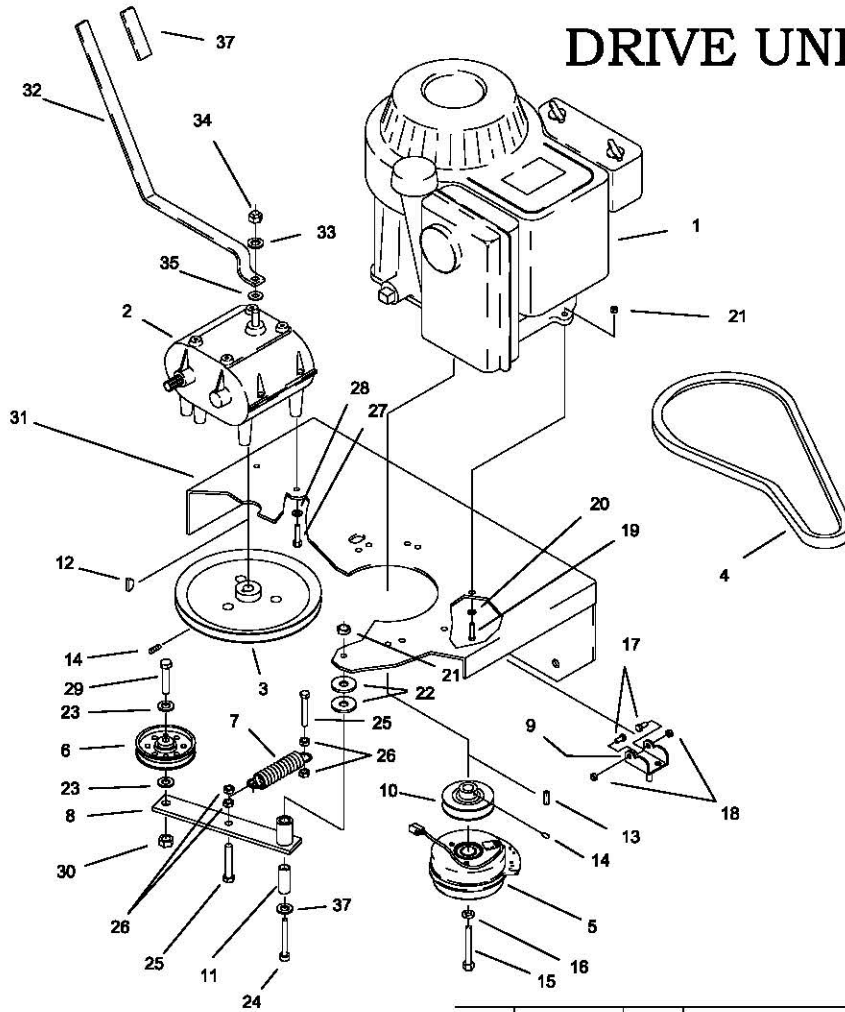
REF NO.	PART NO.	QTY.	DESCRIPTION	REF NO.	PART NO.	QTY.	DESCRIPTION
-	609F-019A	-	SPINDLE ASSEMBLY	16	F-1510	1	3/4" WASHER, FLAT STD.
1	H-1058	1	GREASE FITTING	17	609-155P	-	PULLEY, 1 GROOVE 4"
2	609-162P	1	SPINDLE SHAFT	18	F-1572	4	3/8-24 X 1-1/2" HHCS GR. 5
3	609-223P	1	SPINDLE HOUSING	19	609-034P	4	SPINDLE SPACER REINFORCEMENT
4	D-3058	2	BEARING, #6205-2RS	-	-	-	-
5	H-1893	1	SNAP RING INT. 52MM	21	F-1019-03	4	3/8" LOCK WASHER
6	609-152P	1	BLADE SPACER	22	F-1573	4	3/8-24 LOCKNUT, M-F
7	D-1004-02	2	KEY, WOODRUF, 1/4 X 3/4	23	H-2248	1	BLADE, HIGH L, 18-3/8 CUT 36"
8	F-1526	1	1/2-13 X 1-1/2" HHCS GR. 5	-	H-1714	-	BLADE, HIGH L, 17" CUT 48"
9	F-1464	1	1/2" LOCK WASHER				
10	F-1507	1	WASHER, 1/2" CUPPED				
11	609-151P	1	WASHER, SEAL				
12	609-073P	1	ARBOR SPACER				
13	H-2086	1	GREASE VENT 5 LBS.				
14	F-1461	1	3/4-16 NUT, HEX JAM				
15	F-1463	1	3/4" LOCK WASHER				

DECK IDLERS AND RELATED PARTS



REF NO.	PART NO.	QTY.	DESCRIPTION
1	637-025W	1	SINGLE IDLER ARM
2	649-048P	2	SPACER, IDLER
3	620-201P	2	BEARING CAP
4	621-103P	1	PIN
5	D-3683	2	PULLEY, FLAT IDLER, 2" X 5" DIA.
6	H-2092	1	SPRING, 1-1/2" X 5"
7	F-1927	1	CARRIAGE BOLT, 1/2-13 X 2-3/4" GR. 5
8	F-1800	1	5/16-18 SHCS X 2-1/4"
9	F-1574	1	3/8-24 X 1-1/4" GR. 5
10	F-1378	2	1/2-13 LOCKNUT
11	F-1009-02	1	5/16 FLAT WASHER
12	F-1125	1	5/16 LOCK NUT
13	F-1521	2	1/2" FLAT WASHER, NARROW
14	F-1573	2	3/8" LOCK NUT
15	F-1009-05	2	1/2" FLAT WASHER
16	609-034P	1	SPINDLE SPACER WASHER
17	F-1009-03	2	3/8" FLAT WASHER
18	F-1005-03	2	3/8" STOVER NUT
19	H-2130	1	BALL
20	F-1015-27	1	3/8-16 X 1 1/2, GR.5

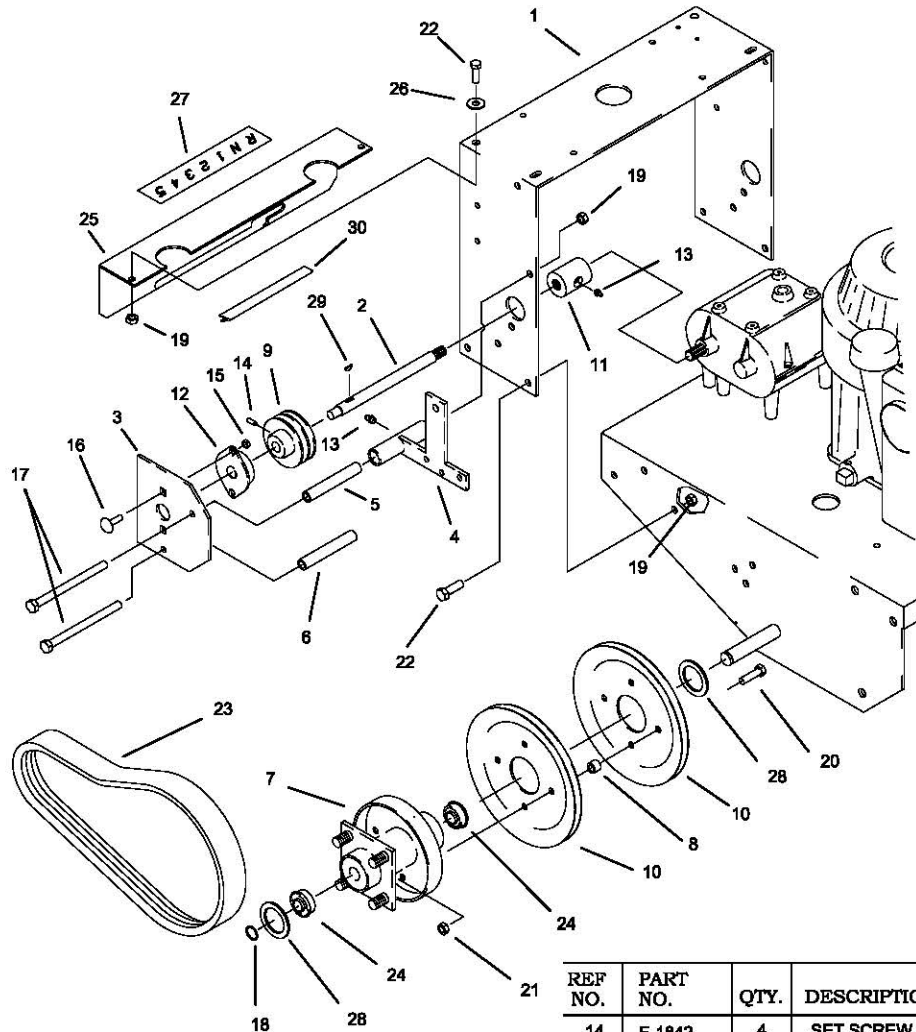
DRIVE UNIT



REF NO.	PART NO.	QTY.	DESCRIPTION
1	M-5332	1	15HP. KAWASAKI
2	D-3690	1	TRANSMISSION
3	652-027W	1	PULLEY, TRANSMISSION
4	D-3699	1	BELT, A-39 KEVLAR
5	E-6317	1	CLUTCH
6	D-3617	1	FLAT IDLER
7	H-2092	1	SPRING
8	622-167A	1	IDLER ARM
9	647-023W	1	CLUTCH STOP
10	652-005P	1	MOTOR PULLEY
11	621-103P	1	PIN
12	D-3331	1	KEY, WOODRUFF 3/16 X 3/4"
13	621-113P	1	KEY
14	F-1228	2	SET SCREW, 1/4 X 1/4"
15	F-1904	1	7/16-20 X 2-1/2" BOLT
16	F-1019-04	1	7/16 LOCK WASHER
17	F-1538	2	1/4-20 X 3/4" GR. 5
18	F-1158	2	1/4" LOCK NUT

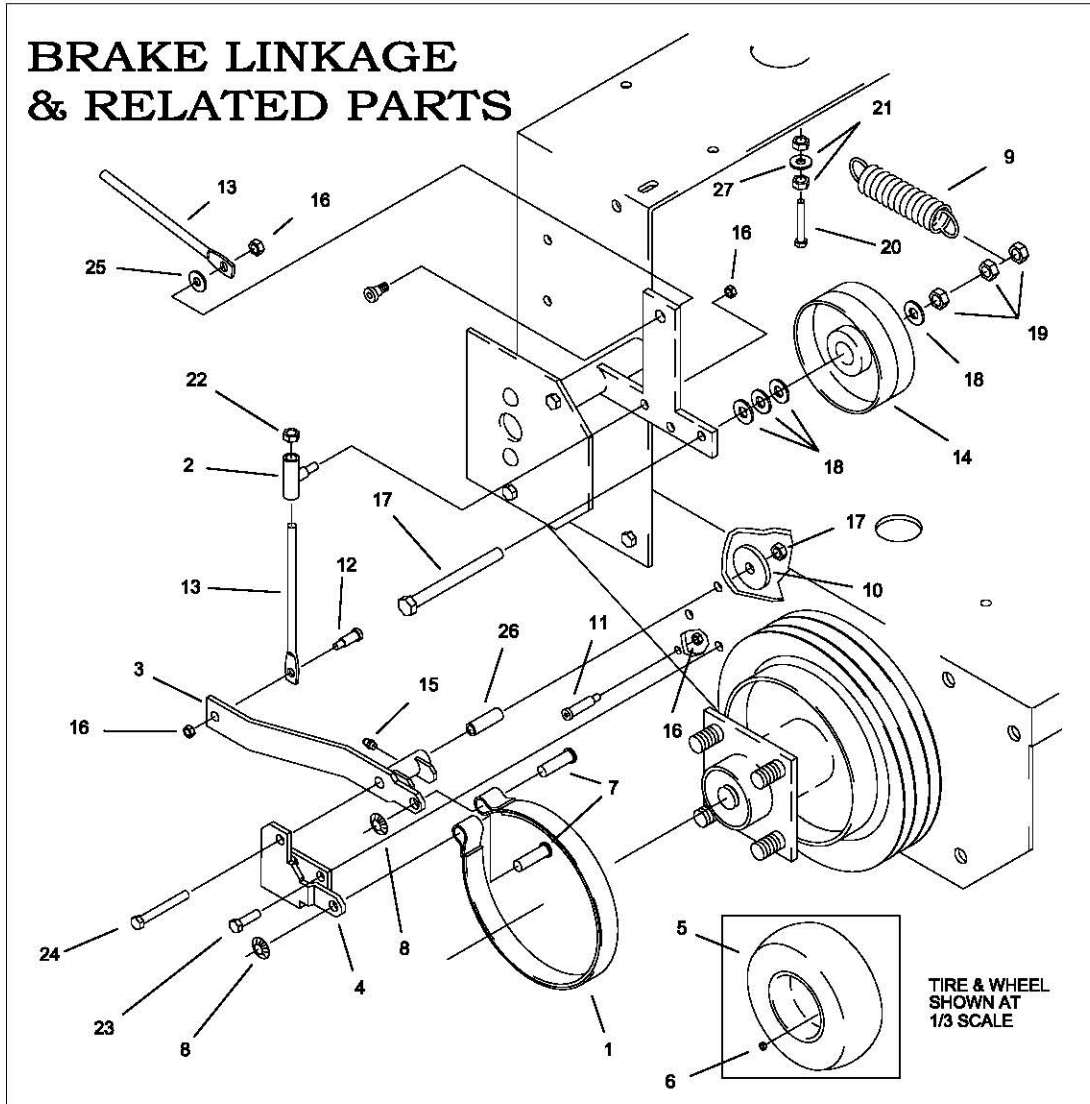
REF NO.	PART NO.	QTY.	DESCRIPTION
19	F-1015-17	4	5/16-18 X 1-1/2" BOLT
20	F-1019-02	4	5-16" LOCK WASHER
21	F-1125	5	5/16" LOCK NUT
22	606-348P	2	WASHER
23	F-1521	2	1/2" FLAT WASHER
24	F-1536	1	5/16-18 X 2-1/4" SHCS
25	F-1574	2	3/8-24 X 1-1/4" GR. 5
26	F-1573	4	3/8-24 LOCK NUT
27	F-1546	4	5/16-18 X 3/4" GR. 5
28	F-1019-02	4	5/16 LOCK WASHER
29	F-1526	1	1/2-13 X 1-1/2" GR. 5
30	F-1005-05	1	1/2-13 LOCK NUT
31	652-028W	1	MOTOR MOUNT
32	652-017P	1	GEAR SHIFTER
33	F-1009-03	1	3/8" FLAT WASHER
34	F-1573	1	3/8-24 LOCK NUT
35	652-020P	1	SHIFTER WASHER
36	H-2362	1	GRIP
37	F-1009-02	1	5/16" FLAT WASHER

DRIVE WHEELS



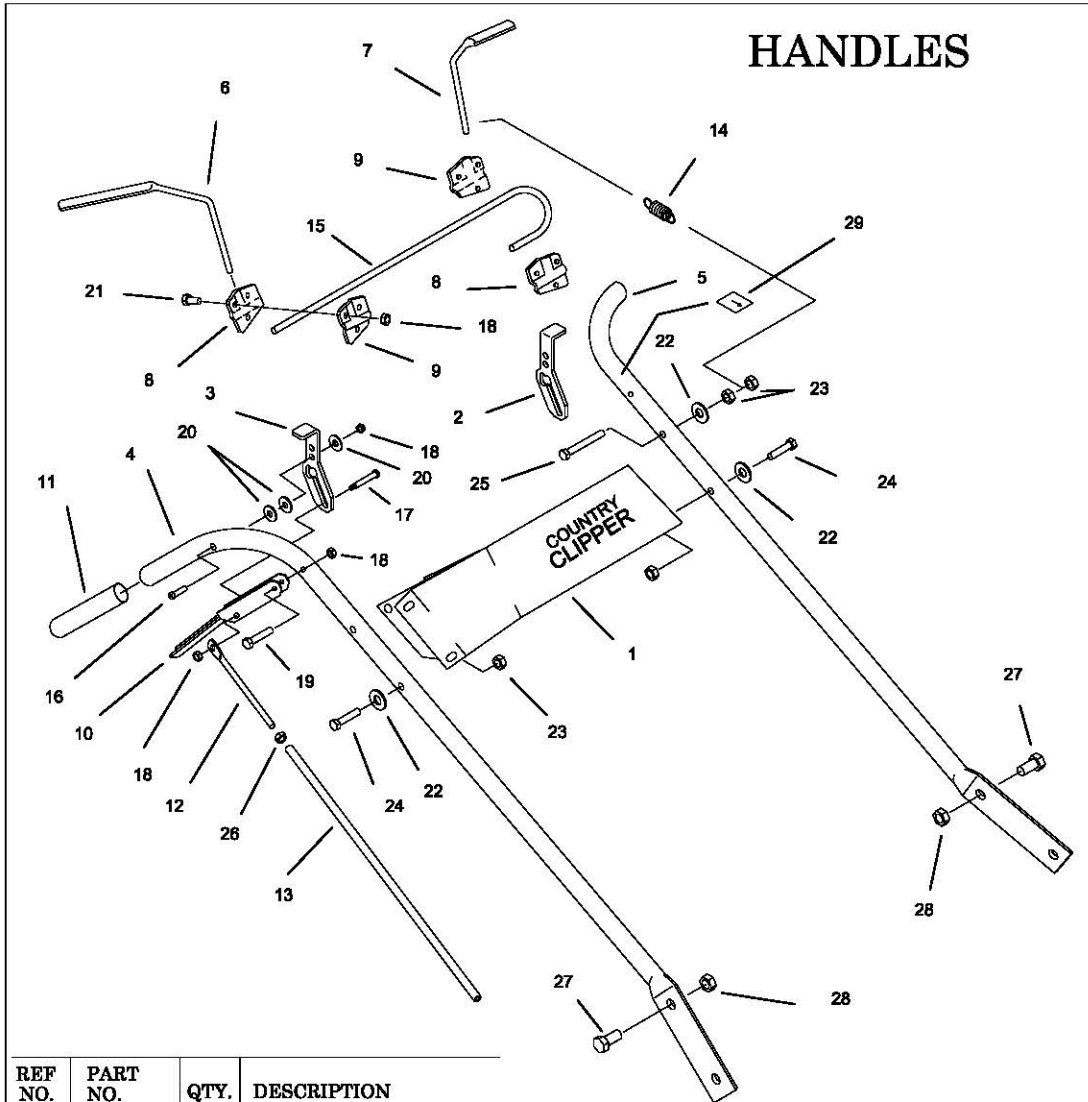
REF NO.	PART NO.	QTY.	DESCRIPTION
1	652-019P	1	TANK STANDOFF
2	652-022P	2	DRIVE SHAFT
3	652-016P	2	GUARD
4	652-035W	2	IDLER ACUATOR
5	652-006P	2	GUARD SPACER (UNPAINTED)
6	652-032P	2	GUARD SPACER (PAINTED)
7	652-025W	2	WHEEL HUB WELDMENT
8	652-031P	8	PULLEY SPACER
9	D-3697	2	MASKA PULLEY
10	D-3701	4	PULLEY
11	D-3696	2	COUPLER, SPLINE
12	D-3687	2	FLANGE, BEARING
13	H-1056	4	GREASE FITTING
14	F-1842	4	SET SCREW, 5/16 X 3/4"
15	F-1158	4	1/4-20 LOCK NUT
16	F-1823	4	1/4 X 3/4" CARRIAGE BOLT
17	F-1653	4	3/8-16 X 5" BOLT
18	H-1651	2	SNAP RING
19	F-1005-03	12	3/8 LOCK NUT
20	F-1879	8	5/16-18 X 1-1/4" GR. 5
21	F-1125	8	5/16 LOCK NUT
22	F-1015-23	8	3/8-16 X 3/4" GR. 5
23	D-3688	2	BELT, 49 3/4" 2 RIBS
24	D-2008-02	4	BEARING
25	652-026P	1	GEAR SELECTOR PLATE
26	F-1009-03	2	3/8 FLAT WASHER
27	P-11572	1	DECAL, GEAR SELECTION
28	606-283P	4	SPECIAL WASHER
29	D-3331	2	KEY, 3/16 X 3/4"
30	606-164P	1	TRIM LOCK 8-1/2" LONG

BRAKE LINKAGE & RELATED PARTS



REF NO.	PART NO.	QTY.	DESCRIPTION	REF NO.	PART NO.	QTY.	DESCRIPTION
1	D-3694	2	BRAKE BAND	15	H-1056	2	GREASE FITTING
2	652-008W	2	BRAKE ROD ANCHOR WLDT.	16	F-1158	8	1/4" LOCK NUT
3	652-030W	2	BRAKE ARM WLDT.	17	H-1329	2	3/8-16 X 3" FULL THD BOLT
4	652-014P	1	BRAKE ANCHOR, RH	18	F-1009-03	4	3/8" FLAT WASHER
-	652-015P	1	BRAKE ANCHOR, LH (NOT SHOWN)	19	F-1005-03	3	3/8" LOCK NUT
5	D-3682	2	WHEEL ASSEMBLY	20	F-1879	2	5/16-18 X 1-1/4" BOLT
6	F-1499	8	LUG NUT	21	F-1125	4	5/16-18 LOCK NUT
7	F-1691	4	CLEVIS PIN, 3/8 X 1"	22	F-1933	2	5/16-24 LOCK NUT
8	F-1913	4	PUSH RETAINER	23	F-1546	4	5/16-18 X 3/4" GR. 5
9	H-1569	2	SPRING	24	F-1536	2	5/16-18 X 2-1/2" GR. 5
10	806-348P	2	WASHER	25	F-1009-01	2	1/4" FLAT WASHER
11	F-1920	2	SHOULDER BOLT 5/16 X 1-3/4"	26	652-010P	2	SHAFT, BRAKE PIVOT
12	F-1916	2	SHOULDER BOLT, 5/16 X 3/8"	27	F-1008-02	2	5/16 FLAT WASHER
13	H-2347	4	LINK ROD				
14	D-3689	2	PULLEY, IDLER				

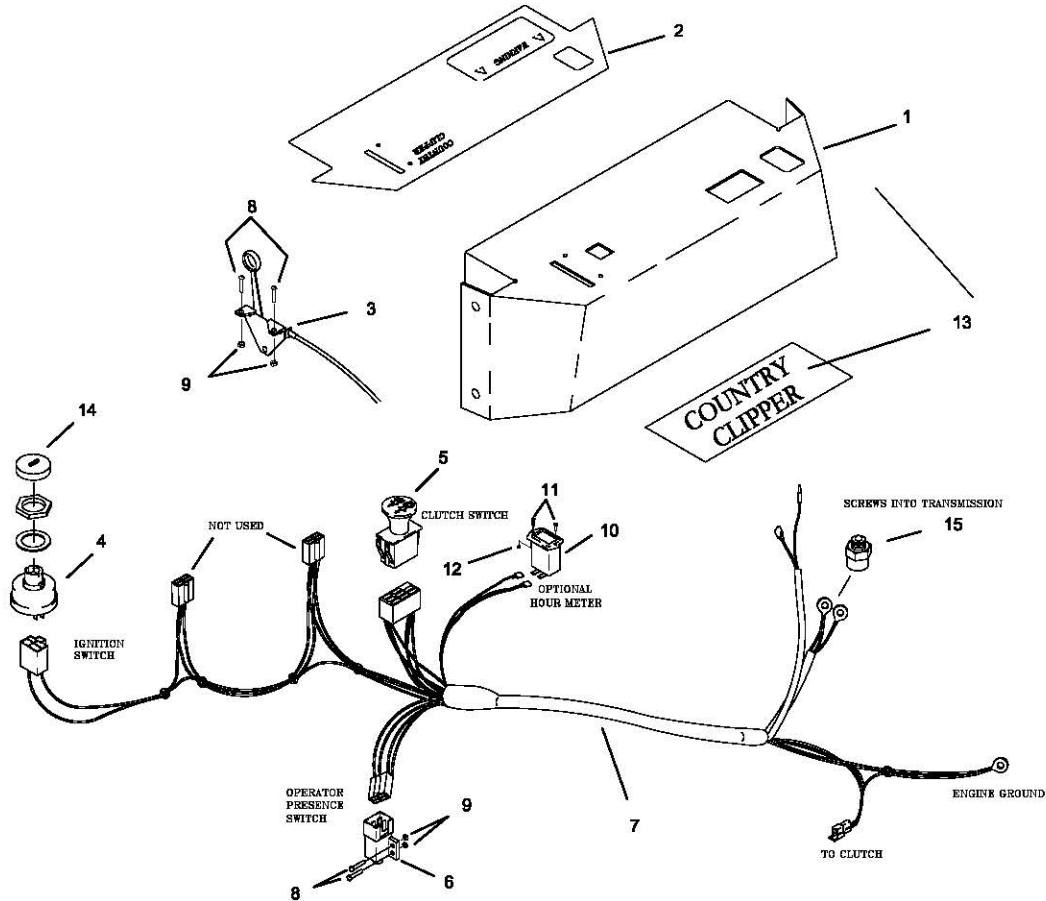
HANDLES



REF NO.	PART NO.	QTY.	DESCRIPTION
1	-	-	SEE (PAGE 13)
2	648-024P	1	NEUTRAL LATCH, LH
3	648-025P	1	NEUTRAL LATCH, RH
4	648-050P	1	HANDLE BAR, RH
5	648-051P	1	HANDLE BAR, LH
6	648-044P	1	OPERATOR PRESENCE BAR, RH
7	648-045P	1	OPERATOR PRESENCE BAR, LH
8	648-056P	1	CLAMP, RIGHT REAR
9	648-057P	1	CLAMP, RIGHT FRONT
10	648-036W	2	SHIFT HANDLE WLDT.
11	H-2361	2	GRIP, .950 ID. X 4-1/2" VINYL
12	H-2347	2	LINK ROD, 5/16-24 X 6.048
13	648-013P	2	STEERING TUBE
14	H-2363	1	SPRING, EXTENSION
15	648-055P	1	OPERATOR PRESENCE, CROSS SHAFT
16	F-1925	2	SCREW, 1/4-20 X 1-3/4 PHILLIPS HEAD
17	F-1920	2	SHOULDER BOLT, 5/16 DIA. X 1-3/4 LONG
18	F-1158	12	1/4-20 LOCK NUT

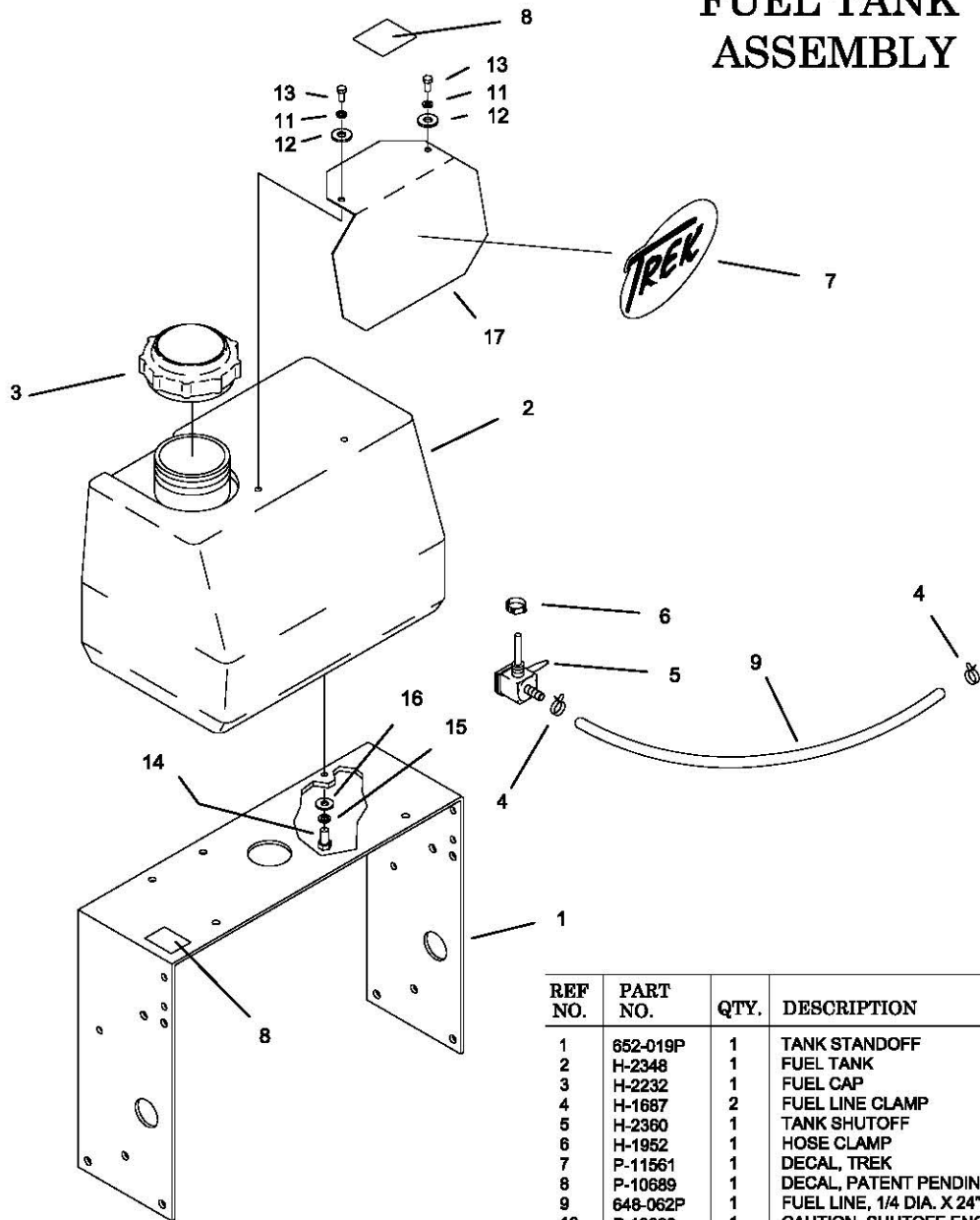
REF NO.	PART NO.	QTY.	DESCRIPTION
19	F-1864	2	1/4-20 x 1-3/4 GR. 5
20	F-1009-01	6	1/4" FLAT WASHER
21	F-1015-02	6	1/4-20 X 5/8" GR. 5
22	F-1009-02	4	5/16 FLAT WASHER
23	F-1125	5	5/16 LOCK NUT
24	F-1006-17	3	5/16-18 X 1-1/2 GR. 5
25	F-1015-19	1	5/16-18 X 2 GR. 5
26	F-1917	2	5/16-24 JAM NUT
27	F-1558	4	3/8-16 X 7/8 GR. 5
28	F-1005-03	4	3/8-16 LOCK NUT
29	P-11543	2	DECAL, NEUTRAL LATCH

WIRE HARNESS AND CONSOLE



REF NO.	PART NO.	QTY.	DESCRIPTION
1	652-003P	1	CONTROL PANEL
-	648-085A	-	CONTROL PANEL W/DECAL,
2	P-11564	1	DECAL, CONTROL PANEL,
3	H-2371	1	THROTTLE CABLE
4	E-5873	1	START SWITCH
5	E-6296	1	CLUTCH SWITCH
6	E-6297	1	PLUNGER SWITCH
7	E-6323	1	WIRE HARNESS
8	F-1022-26	4	MACHINE SCREW 10-32 X 5/8"
9	F-1448	4	NUT 10-32
10	E-5878	1	HOUR METER, (OPTIONAL)
11	F-1054	2	6-32 X 5/8" SCREW
12	F-1535	2	6-32 LOCK NUT
13	P-11566	1	DECAL, COUNTRY CLIPPER
14	E-6281	1	BEZEL
15	E-6325	1	NEUTRAL SWITCH

FUEL TANK ASSEMBLY



REF NO.	PART NO.	QTY.	DESCRIPTION
1	652-019P	1	TANK STANDOFF
2	H-2348	1	FUEL TANK
3	H-2232	1	FUEL CAP
4	H-1687	2	FUEL LINE CLAMP
5	H-2360	1	TANK SHUTOFF
6	H-1952	1	HOSE CLAMP
7	P-11561	1	DECAL, TREK
8	P-10689	1	DECAL, PATENT PENDING
9	648-062P	1	FUEL LINE, 1/4 DIA. X 24"
10	P-10939	1	CAUTION, SHUTOFF ENGINE
11	F-1019-01	2	1/4" LOCK WASHER
12	F-1009-01	2	1/4" FLAT WASHER
13	F-1709	2	1/4-20 X 1/2" BOLT
14	F-1546	4	5/16-18 X 3/4" GR. 5
15	F-1019-02	4	5/16" LOCK WASHER
16	F-1009-02	4	5/16" FLAT WASHER
17	648-064P	1	LOGO MOUNTING PLATE
18	-	-	-