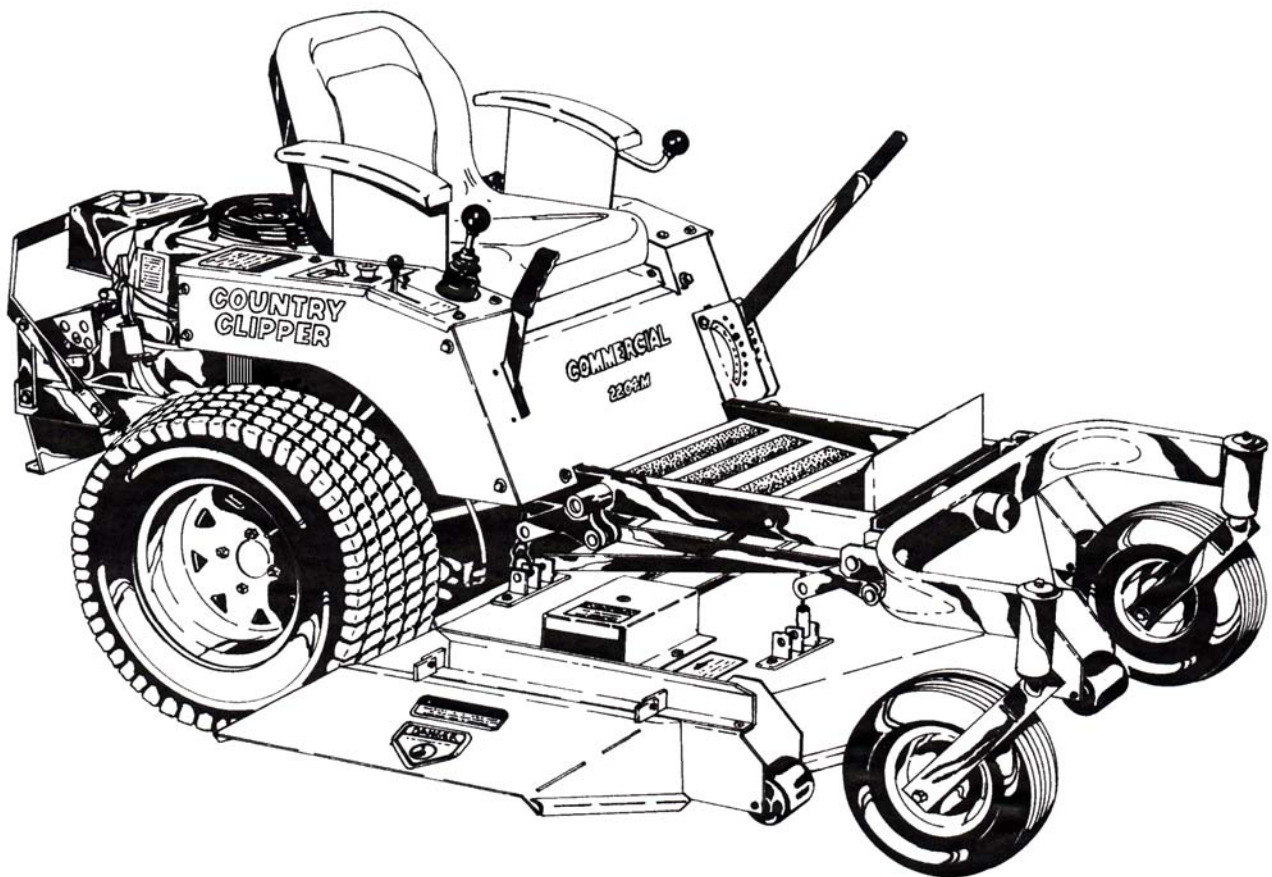


REPAIR PARTS MANUAL
for
**COUNTRY
CLIPPER**

TRACTOR MODELS 2204M, 2304M, 2504M
AND 2304KA & 2304KAT
AND MODELS 2204MT, 2304MT & 2504MT
DECK MODELS 5204M & 6004M

Mid-Mount Zero Turn Radius Mowers



COUNTRY CLIPPER ZERO TURN RADIUS MOWER

**TRACTOR MODELS 2204M, 2304M & 2504M
AND 2304KA & 2304KAT
AND MODELS 2204MT, 2304MT & 2504MT
DECK MODELS 520M & 6004M**

TABLE OF CONTENTS

PAGE ...CONTENTS

SECTION 1 MOWER DECKS AND RELATED PARTS

- 1-1.52" DECK ASSEMBLY
- 1-2.60" DECK ASSEMBLY
- 1-3.DECK SPINDLE ASSEMBLY
- 1-4.DRIVE BELT IDLER & RELATED PARTS
- 1-5.LIFT HANDLE ASSEMBLY & RELATED PARTS
- 1-6.LIFT ASSEMBLY & RELATED PARTS
- 1-7.DOUBLE IDLER ASSEMBLY & RELATED PARTS

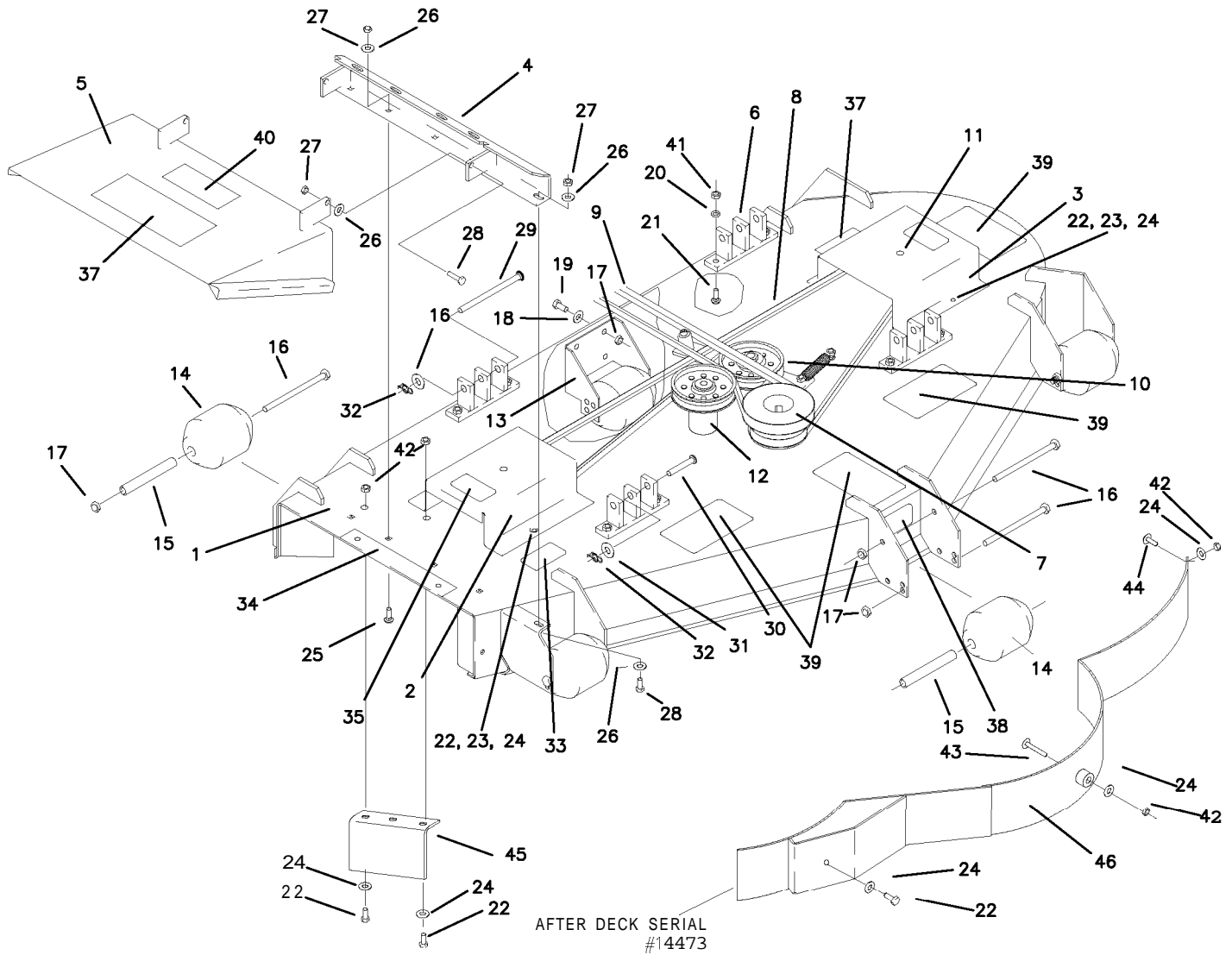
SECTION 2 TRACTOR FRAME AND RELATED PARTS

- 2-8.CASTER WHEEL ASSEMBLY
- 2-9.FRAME SIDES AND RELATED PARTS
- 2-10.FENDER ASSEMBLY
- 2-11.SEAT, FOOT DECK AND RELATED PARTS

SECTION 3 TRACTOR DRIVE AND RELATED PARTS

- 3-12.FUEL TANK ASSEMBLY
- 3-13.JOYSTICK STEERING CONTROL AND RELATED PARTS
- 3-14.JOYSTICK STEERING CONTROL AND RELATED PARTS (continued)
- 3-15.RIGHT HAND STEERING CONTROL AND RELATED PARTS
- 3-16.LEFT HAND STEERING CONTROL AND RELATED PARTS
- 3-17.PARKING BRAKE ASSEMBLY AND RELATED PARTS
- 3-18.MOTOR MOUNT ASSEMBLY
- 3-19.MOTOR MOUNT ASSEMBLY AND RELATED PARTS (continued)
- 3-20.MOTOR ASSEMBLY AND RELATED PARTS
- 3-21.HYDROSTAT ASSEMBLY
- 3-22.HYDROSTAT/GEAR BOX ASSEMBLY
- 3-23.WIRE HARNESS
- 3-24.HYDRO BELT GUIDE ASSEMBLY

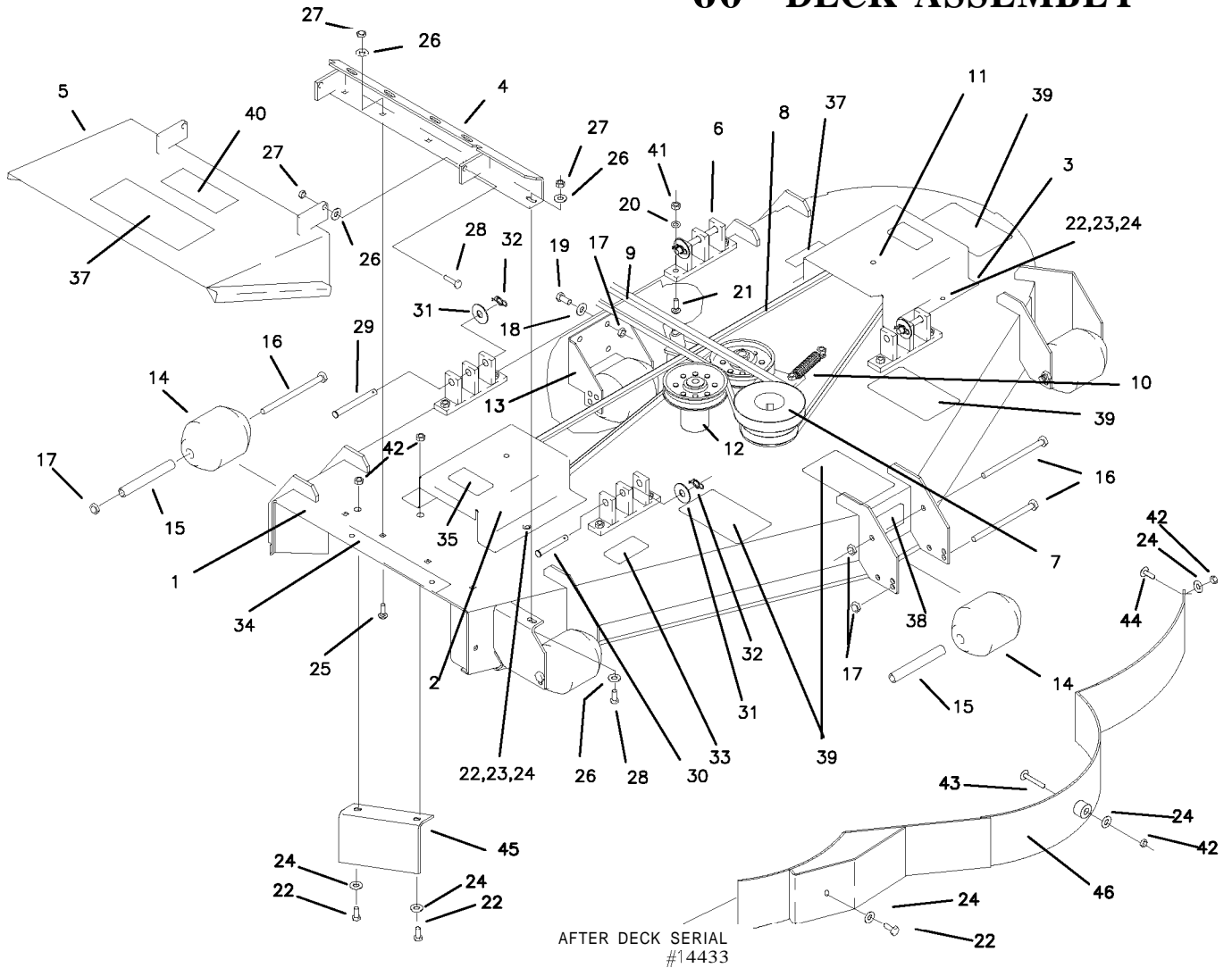
52" DECK ASSEMBLY



REF NO.	PART NO.	QTY.	DESCRIPTION
1	643-033A	1	52" DECK W/DECALS
	643-040A	1	52" FRONT Baffle DECK W/DECALS
2	643-034A	1	PULLEY COVER RH, W/DECAL
3	643-035A	1	PULLEY COVER LH, W/DECAL
4	637-053W	1	OUTLET STIFFENER
5	637-062A	1	60" DECK CHUTE W/DECAL
6	643-016W	4	DECK HANGER
7	609D-156P	1	PULLEY, 5-3/4 DIA. 2 GROOVE
8	D-3635	1	V-BELT (KNLAR) A-100
9	D-3645	1	V-BELT, MOTOR TO DECK
10	-----	1	SINGLE IDLER ASSEMBLY (SEE BREAK-DOWN PAGE)
11	-----	1	SPINDLE ASSEMBLY (SEE BREAK-DOWN PAGE)
12	-----	1	DRIVE BELT IDLER (SEE BREAK-DOWN PAGE)
13	609-182P	1	REAR SCALPER BRACKET
14	H-1948	6	ROLLER, 3-3/4 DIA. X 4-13/16
15	609-183P	6	WHEEL BUSHING
16	F-1741	7	3/8-16 X 6" GR. 5
17	F-1239	11	3/8 LOCKNUT
18	F-1009-03	4	3/8 FLAT WASHER
19	F-1558	4	3/8-16 X 7/8 GR. 5
20	F-1019-03	8	3/8" LOCKWASHER

REF NO.	PART NO.	QTY.	DESCRIPTION
21	F-1672	8	CARRIAGE BOLT, 5/16 X 1-1/4
22	F-1538	7	1/4-20 X 3/4 GR. 5
23	F-1019-01	4	1/4" LOCKWASHER
24	F-1009-01	9	1/4" FLAT WASHER
25	F-1671	4	CARRIAGE BOLT 5/16 X 3/4
26	F-1009-02	8	5/16" FLAT WASHER
27	F-1125	7	5/16-18 LOCKNUT
28	F-1015-15	3	5/16-18 X 1" GR. 5
29	H-2240	2	PIN, 1/2" X 4-1/2"
30	F-1889	2	PIN, 1/2" X 2-1/2
31	F-1521	4	1/2" FLAT WASHER
32	H-2239	4	RUE RING 1/2"
33	P-10947	1	DECAL, "GREASE SPINDLE"
34	P-10122	1	DECAL, "MISSING CHUTE"
35	P-10935	2	DECAL, "ROTATING..."
36	-----	---	-----
37	P-10941	2	DECAL, "MULTI PERIL"
38	P-11413	1	DECAL, "HOIST POINT"
39	H-1932	4	SAFETY TREAD
40	P-10937	1	DECAL, "WARNING"
41	F-1005-03	8	LOCKNUT, 3/8 STOVER
42	F-1158	4	LOCKNUT, 1/4-20
43	F-1935	1	1/4-20 X 1 1/2" CARRIAGE BOLT
44	F-1823	1	1/4-20 X 3/4" CARRIAGE BOLT
45	629-230P	1	AIR Baffle
46	629-229W	1	DUST Baffle WLDT, 52"

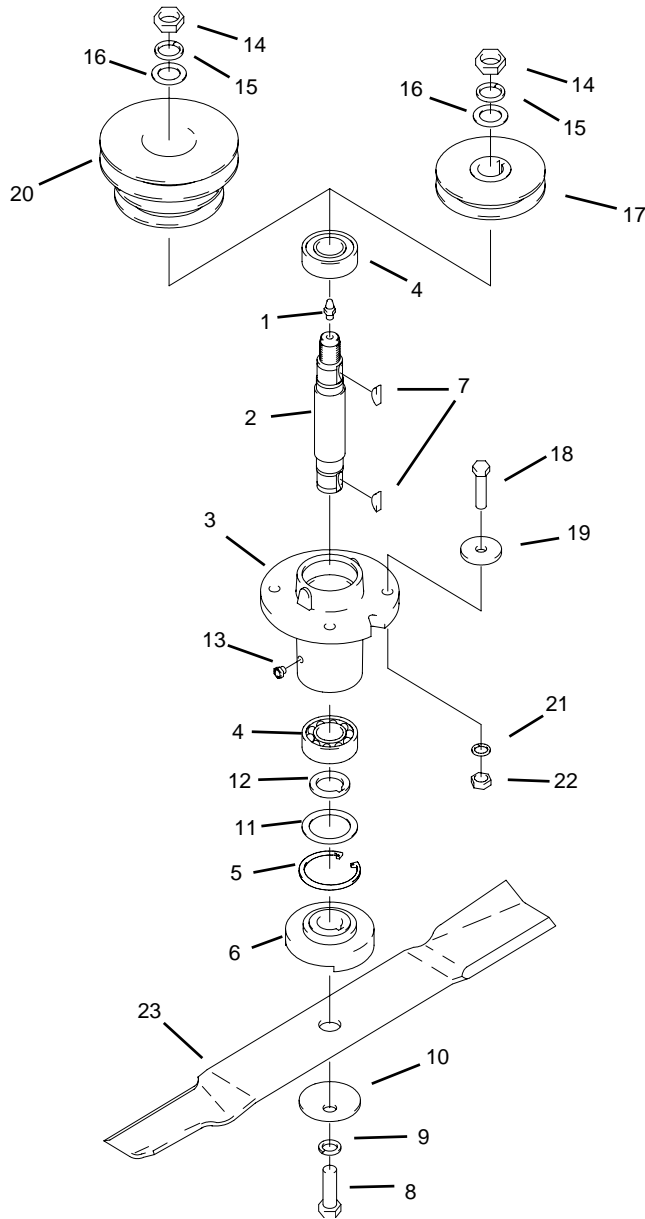
60" DECK ASSEMBLY



REF NO.	PART NO.	QTY.	DESCRIPTION
1	643-036A	1	60" DECK W/DECALS
	643-059A	1	60" FRONT BAFFLE DECK W/DECALS
2	643-037A	1	PULLEY COVER RH, W/DECAL
3	643-038A	1	PULLEY COVER LH, W/DECAL
4	637-053W	1	OUTLET STIFFENER
5	637-062A	1	60" DECK CHUTE W/DECAL
6	643-016W	4	DECK HANGER
7	609C-156P	1	PULLEY, 5-3/8 DIA. 2 GROOVE
8	D-3389	1	V-BELT (KEVLAR) A-112
9	D-3645	1	V-BELT, MOTOR TO DECK
10	-----	1	SINGLE IDLER ASSEMBLY (SEE BREAK-DOWN PAGE)
11	-----	1	SPINDLE ASSEMBLY (SEE BREAK-DOWN PAGE)
12	-----	1	DRIVE BELT IDLER (SEE BREAK-DOWN PAGE)
13	609-182P	1	REAR SCALPER BRACKET
14	H-1948	6	ROLLER, 3-3/4 DIA. X 4-13/16
15	609-183P	6	WHEEL BUSHING
16	F-1741	7	3/8-16 X 6" GR. 5
17	F-1239	11	3/8 LOCKNUT
18	F-1009-0	4	3/8 FLAT WASHER
19	F-1558	4	3/8-16 X 7/8 GR. 5
20	F-1019-0	8	3/8" LOCKWASHER
21	F-1672	8	CARRIAGE BOLT, 5/16 X 1-1/4

REF NO.	PART NO.	QTY.	DESCRIPTION
22	F-1538	7	1/4-20 X 3/4 GR. 5
23	F-1019-01	4	1/4" LOCKWASHER
24	F-1009-01	9	1/4" FLAT WASHER
25	F-1671	4	CARRIAGE BOLT 5/16 X 3/4
26	F-1009-02	8	5/16" FLAT WASHER
27	F-1125	7	5/16-18 LOCKNUT
28	F-1015-15	3	5/16-18 X 1" GR. 5
29	H-2240	2	PIN, 1/2" X 4-1/2"
30	F-1889	2	PIN, 1/2" X 2-1/2"
31	F-1521	4	1/2" FLAT WASHER
32	H-2239	4	RUE RING 1/2"
33	P-10947	1	DECAL, "GREASE SPINDLE"
34	P-10122	1	DECAL, "MISSING CHUTE"
35	P-10935	2	DECAL, "ROTATING.."
36	----	-	-----
37	P-10941	2	DECAL, "MULTI PERIL"
38	P-11413	1	DECAL, "HOIST POINT"
39	H-1932	4	SAFETY TREAD
40	P-10937	1	DECAL, "WARNING"
41	F-1005-03	8	LOCKNUT, 3/8 STOVER
42	F-1158	4	LOCKNUT, 1/4-20
43	F-1935	1	1/4-20 X 1 1/2" CARRIAGE BOLT
44	F-1823	1	1/4-20 X 3/4 CARRIAGE BOLT
45	643-042P	1	AIR BAFFLE
46	643-047W	1	DUST BAFFLE WLDT, 60"

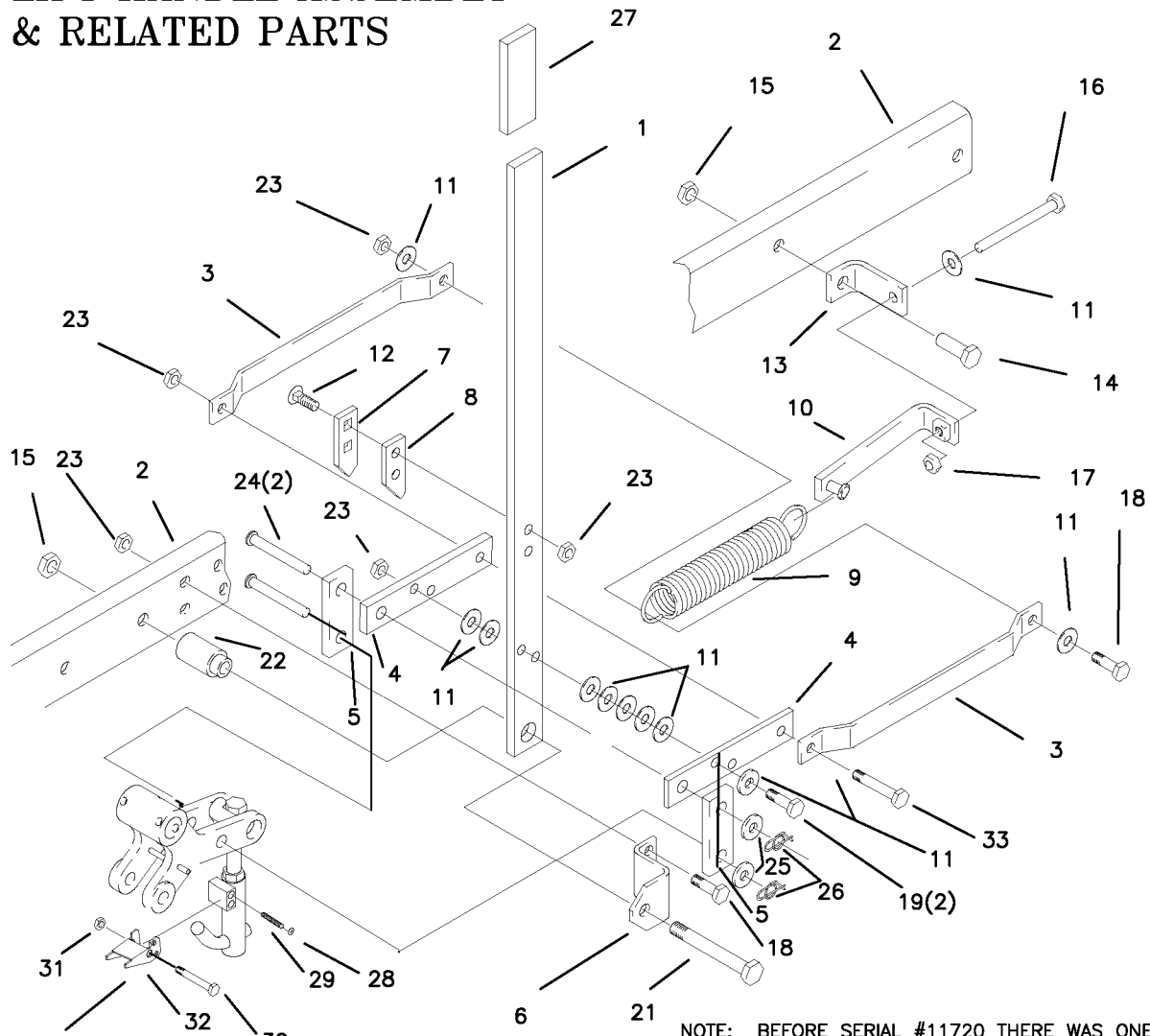
DECK SPINDLE ASSEMBLY



REF. NO.	PART NO.	QTY.	DESCRIPTION
--	609G-019A	--	SPINDLE ASSEMBLY
1	H-1056	1	GREASE FITTING
2	609-162P	1	SPINDLE SHAFT
3	609-223P	1	SPINDLE HOUSING
4	D-3058	2	BEARING, #6205-2RS
5	H-1893	1	SNAP RING INT. 52MM
6	609-152P	1	SPACER, BLADE
7	D-1004-02	2	KEY, WDRF. 1/4 X 3/4
8	F-1526	1	1/2-13 X 1-1/2" HHCS GR. 5
9	F-1464	1	1/2" LOCKWASHER
10	F-1507	1	WASHER, 1/2" CUPPED
11	609-151P	1	WASHER, SEAL
12	609-073P	1	ARBOR SPACER
13	H-2066	1	GREASE VENT 5 LBS.
14	F-1461	1	3/4-16 NUT, HEX JAM

REF. NO.	PART NO.	QTY.	DESCRIPTION
15	F-1463	1	3/4" LOCKWASHER
16	F-1510	1	3/4" WASHER, FLAT STD.
17	609-155P	--	PULLEY, 1 GROOVE 4"
18	F-1572	4	3/8-24 X 1-1/2" HHCS GR. 5
19	609-034P	4	SPINDLE SPACER REINFO.
20	609D-156P	1	PULLEY, 2 GROOVE 52"
--	609C-156P	--	PULLEY, 2 GROOVE 60"
21	F-1019-03	4	3/8" LOCKWASHER
22	F-1573	4	3/8-24 LOCKNUT, M-F
23	H-2246	1	BLADE, HIGH L, 18-3/8 CUT 52"
--	H-1667	--	BLADE, LOW L, 21" CUT 60"
			OPTIONAL BLADES
	H-1708	--	BLADE, HIGH L, 21" CUT 60"

LIFT HANDLE ASSEMBLY & RELATED PARTS



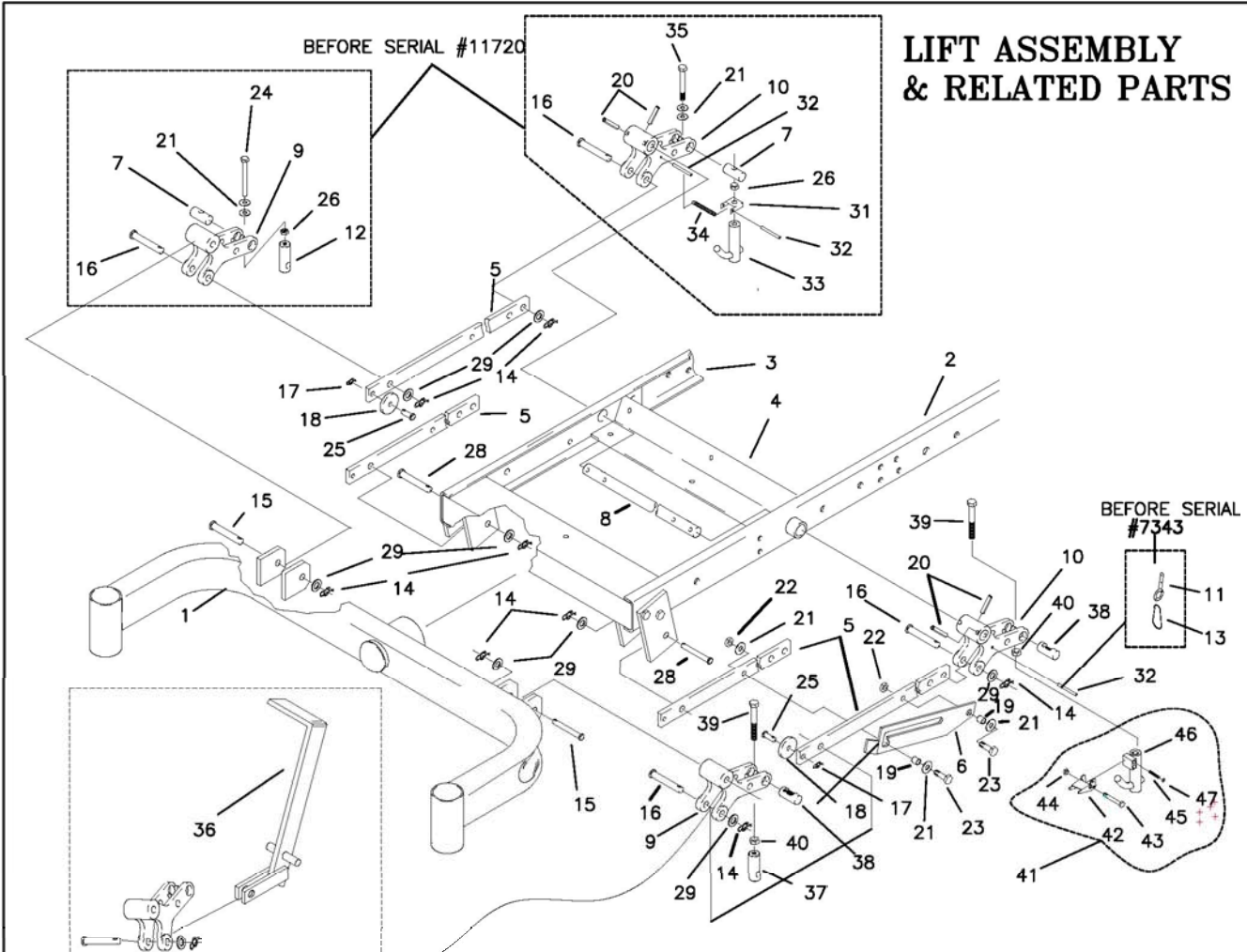
SEE ASSEMBLY NUMBER
PAGE 1-6

NOTE: BEFORE SERIAL #11720 THERE WAS ONE #11 WASHER ON EITHER SIDE OF LIFT HANDLE, (1) HANDLE LINK AND (1) F-1073 BOLT.

REF NO.	PART NO.	QTY.	DESCRIPTION
1	642-062P	1	LIFT HANDLE
2	642-040W	1	FRAME WELDMENT. LH.
3	642-055P	2	SPRING EXTENSION
4	642-060P	2	SPRING ANCHOR PLATE
5	642-061P	2	HANDLE LINK
6	642-041P	1	HANDLE PIVOT BRACKET
7	642-127P	1	TOP PEG LATCH PLATE
8	642-126P	1	TOP PEG SPACER PLATE
9	H-1610	1	SPRING, 1-1/2" OD. X 8"
10	620-227W	1	SPRING TIGHTENER WLDT.
11	F-1009-03	11	FLAT WASHER, 3/8"
12	F-1672	2	CARRIAGE BOLT, 3/8-16 X 1-1/4"
13	642-071W	1	SPRING ANCHOR WELDMT
14	F-1526	1	3/8-16 X 1-1/2" GR. 5
15	F-1005-05	2	NUT, 1/2-13 LOCKNUT
16	F-1646	1	3/8-16 X 5" FULL THREAD
17	F-1011-03	1	HEX NUT, 3/8-16 UNC-2B
18	F-1307	3	3/8-16 X 1-1/4" GR. 5
19	F-1073	3	3/8-16 X 2" GR. 5

REF NO.	PART NO.	QTY.	DESCRIPTION
21	F-1828	1	1/2-13 X 3-1/2" GR. 5
22	642-095P	1	HANDLE PIVOT PIN
23	F-1005-03	7	NUT, 3/8-16 LOCKNUT (STOVER)
24	F-1889	2	CLEVIS PIN, 1/2 X 2-5/8"
25	F-1521	2	1/2" FLAT WASHER
26	H-2239	2	RUE RING, 1/2"
27	H-2324	1	VINYL GRIP, 3/8 X 1-1/2"
28	D-3723	1	1/4" CHROME STEEL BALL
29	H-2390	1	SPRING, .219 OD X .024 WIRE
30	F-1716	1	1/4 X 1-1/2", G5
31	F-1158	1	NUT, 1/4" STOVER
32	642-178P	1	LATCH
33	F-1015-30	1	3/8-16 X 2 1/2" GR. 5

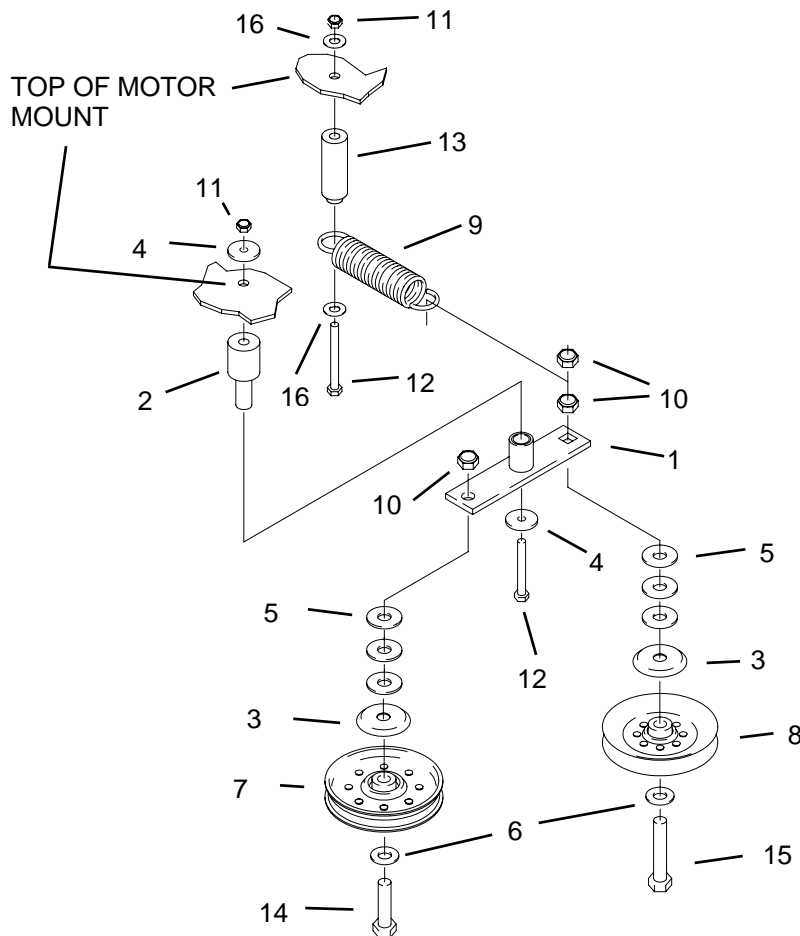
**LIFT ASSEMBLY
& RELATED PARTS**



NOTE: #36 (629-172W) IS ATTACHED TO THE LEFT FRONT LIFT SLEEVE (#9) AFTER SERIAL #11341

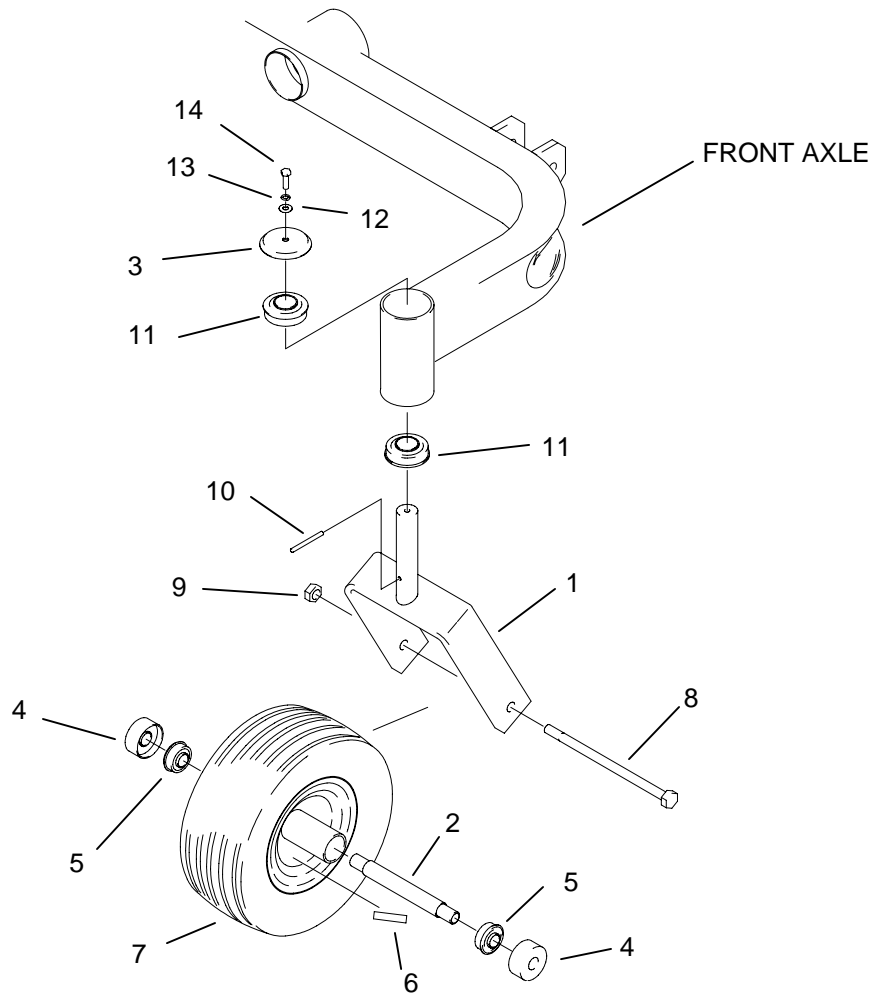
REF NO.	PART NO.	QTY.	DESCRIPTION
1	642-021W	1	FRONT AXLE WELDMENT
2	642-04OW	1	FRAME WELDMENT, LH
3	642-039W	1	FRAME WELDMENT, RH
4	642-019W	1	FRONT PIVOT CHANNEL
5	642-059P	4	LINK BAR
6	642-10OP	1	DECK LATCH (FLIP UP)
7	642-067P	4	TOP HANGER PIN
8	620-051P	1	LIFT BAR
9	642-081P	2	LIFT SLEEVE, FRONT
10	642-082P	2	LIFT SLEEVE, REAR
11	642-101W	2	EYE BOLT WLDT.
12	642-066P	2	ADJUSTABLE HANGER ROD
13	H-2238	2	SPRING SNAP, LOAD RATED
14	H-2239	8	RUE RING, 1/2"
15	F-1890	2	CLEVIS PIN, 1/2 X 3-1/2"
16	F-1898	4	CLEVIS PIN, 1/2 X 2-3/4"
17	F-1492	2	RUE RING, 5/16-3/8 PIN
18	642-105P	2	ROLLER
19	642-069P	2	SPACER, TOP PEG
20	F-1036-37	4	ROLL PIN, 5/16 DIA. X 1.750
21	F-1009-02	10	FLAT WASHER, 5/16"
22	F-1573	2	LOCK NUT 3/8-24
23	F-1572	2	3/8-24 X 1-1/2 HH GR. 5
24	F-1616	2	3/8-16 X 3-1/4" HH GR. 5
25	F-1691	2	CLEVIS PIN, 3/8 X 1"
26	F-1486	4	3/8-16 JAM NUT
27	F-1239	2	3/8-16 NYLOC NUT
28	F-1896	2	CLEVIS PIN, 1/2 X 1-3/4"
29	F-1521	8	WASHER, 1/2 NARROW
30	-	-	-
31	642-151P	2	SPRING ANCHOR
32	F-1456	4	ROLL PIN, 3/16 X 2"
33	642-153W	2	HANGER END WELDMENT
34	H-2104	2	EXT. SPRING, 2-7/32 X .312
35	F-1066	2	CAPSCREW, 3/8-16 X 4"
36	629-172W	1	FOOT ASSIST, DECK LIFT
37	642-175P	2	ADJUSTABLE HANGER END
38	642-177P	4	HANGER PIN
39	F-1936	4	1/2-13 X 3-1/2, 2" THREAD
40	F-1489	4	NUT, 1/2" JAM
41	642-183A	2	REAR DECK HANGER ASSEMBLY
42	642-178P	1	LATCH
43	F-1716	1	1/4 X 1-1/2", G5
44	F-1158	1	NUT, 1/4" STOVER
45	H-2390	1	SPRING, .219 OD X .024 WIRE
46	642-176W	1	REAR DECK HANGER WLDT
47	D-3723	1	1/4" CHROME STEEL BALL

DOUBLE IDLER ASSEMBLY AND RELATED PARTS



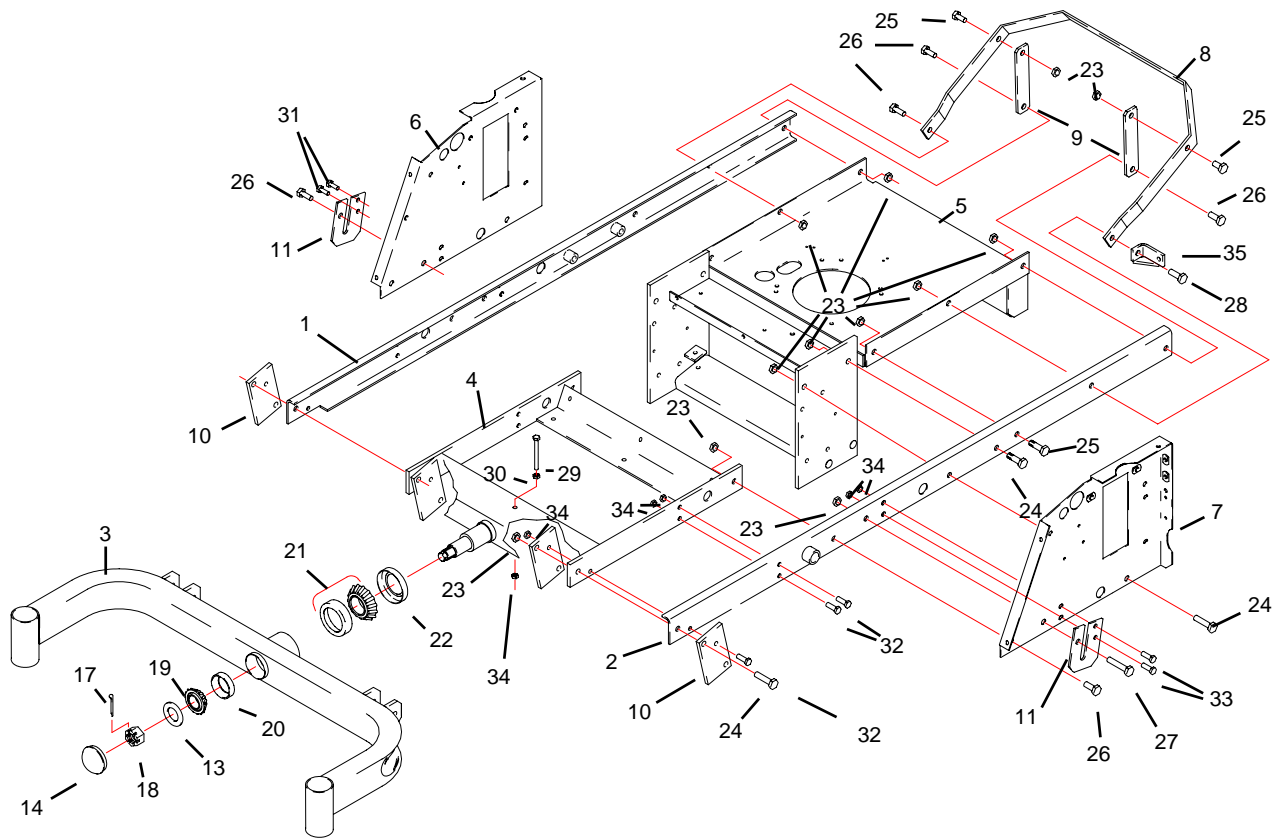
REF. NO.	PART NO.	QTY.	DESCRIPTION
1	636-086W	1	IDLER ARM
2	642-028P	1	PIVOT STUD
3	620-201P	2	BEARING CAP
4	609-034P	2	5/16 ID.WASHER
5	F-1009-05	6	1/2" FLAT WASHER
6	F-1521	2	1/2" WASHER
7	D-3617	1	FLAT IDLER PULLEY
8	D-3337	1	V-IDLER PULLEY
9	H-2092	1	SPRING
10	F-1005-05	3	1/2" LOCKNUT
11	F-1005-03	2	3/8" LOCKNUT
12	F-1066	2	3/8-16 X 4" GR. 5
13	642-163P	1	SPRING ANCHOR BUSHING
14	F-1293	1	1/2-13 X 2" GR. 5
15	F-1668	1	1/2-13 X 2-3/4" GR. 5
16	F-1009-03	2	3/8 FLAT WASHER

CASTER WHEEL ASSEMBLY



REF. NO.	PART NO.	QTY.	DESCRIPTION
1	617-355W	1	CASTER WELDMENT
2	611-136P	2	BEARING SPACER
3	609-099P	2	BEARING CAP
4	611-135P	4	BEARING SHIELD
5	D-3432	4	BEARING, 5/8 ID X 1-3/8 OD
6	P-11384	2	DECAL, 12 PSI.
7	D-3574	2	TIRE, 15 X 5-6 W/WHEEL
8	F-1129	2	1/2-13 X 8" GR. 5
9	F-1005-05	2	1/2-13 LOCKNUT
10	F-1456	2	3/16 ROLL PIN
11	D-2008-02	4	BEARING,SPD SF-16-32
12	F-1009-01	2	1/4" FLAT WASHER
13	F-1019-01	2	1/4" LOCKWASHER
14	F-1810	2	1/4-20 X 3/4 W/NYLON PATCH
15	-----	-	-----

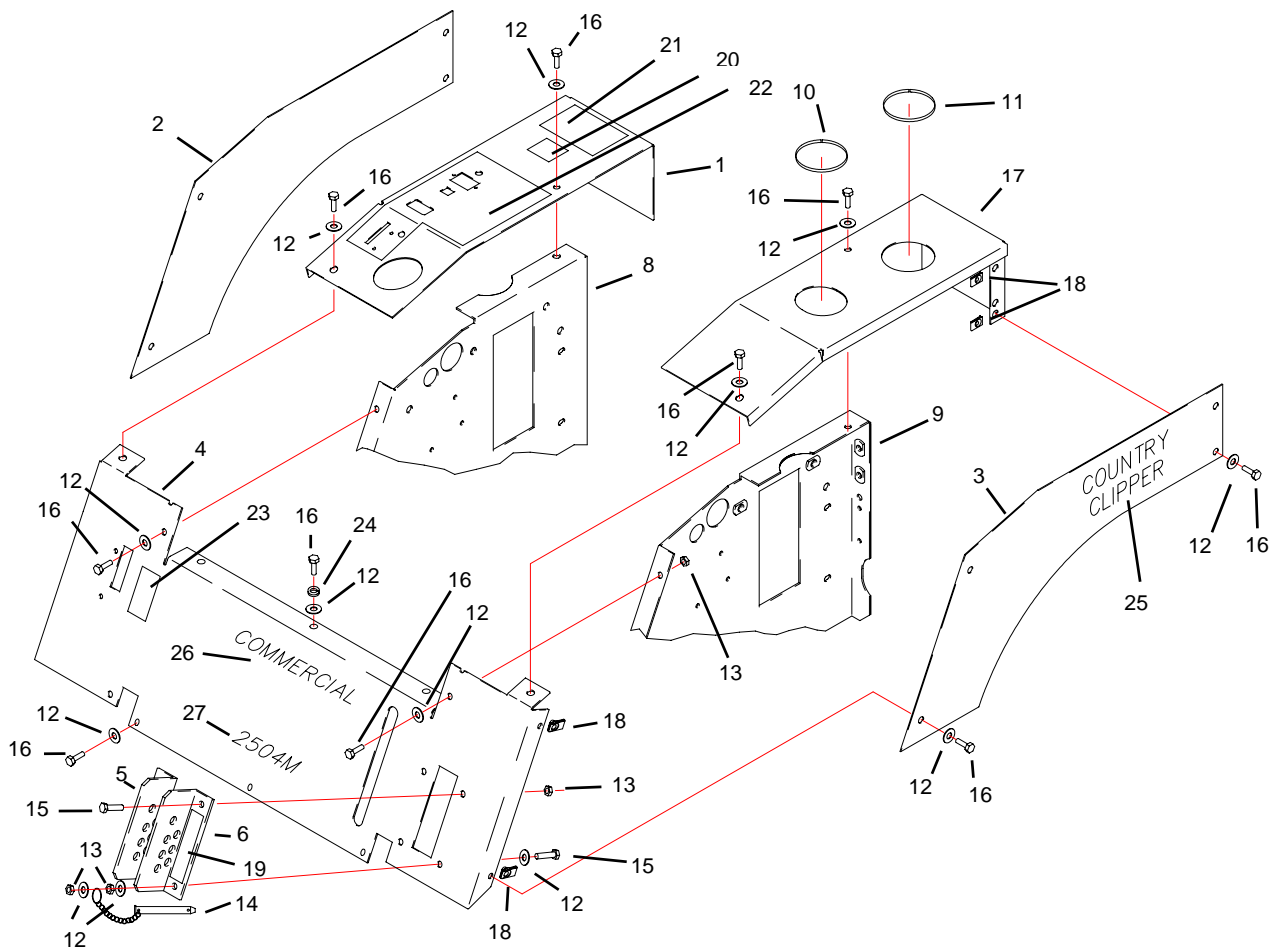
FRAME SIDES & RELATED PARTS



REF. NO.	PART NO.	QTY.	DESCRIPTION
1	642-039W	1	FRAME SIDE, RH.
2	642-040W	1	FRAME SIDE, LH.
3	642-021W	1	FRONT AXLE
4	642-019W	1	FRONT PIVOT CHANNEL
5	642-124W	1	MOTOR MOUNT
6	642-049P	1	SIDE PANEL RH.
7	642-050P	1	SIDE PANEL LH.
8	642-093P	1	ENGINE GUARD
9	642-015P	2	ENGINE GUARD MNT. LEG
10	642-063P	4	DRAG BAR TAB
11	642-042P	2	BRAKE ROD MOUNT
12	-----	--	-----
13	606-303P	1	1" WASHER
14	620-206P	1	GREASE CAP
15	-----	--	-----
16	-----	--	-----
17	F-1728	1	3/16 X 2 COTTER PIN
18	F-1724	1	1"-14 CASTLE NUT
19	D-2013-01	1	BEARING CONE, 1.25 BORE
20	D-2014-01	1	BEARING CUP, 2.328 ID.

REF. NO.	PART NO.	QTY.	DESCRIPTION
21	D-3646	1	TAPERED ROLLER BRG.
22	D-3647	1	SEAL, #19992
23	F-1005-05	16	1/2 LOCKNUT
24	F-1293	6	1/2-13 X 2" GR. 5
25	F-1759	4	1/2-13 X 1" GR. 5
26	F-1386	4	1/2-13 X 1-1/4 GR. 5
27	F-1828	1	1/2-13 X 3-1/2 GR. 5
28	F-1526	1	1/2-13 X 1-1/2 GR. 5
29	F-1073	1	3/8-16 X 2 GR. 5
30	F-1011-03	1	3/8-16 NUT, UNC-2B
31	F-1558	4	3/8-16 X 7/8 GR. 5
32	F-1015-28	2	3/8-16 X 1-3/4 GR. 5
33	F-1307	2	3/8-16 X 1-1/4 GR. 5
34	F-1005-03	11	3/8-16 LOCKNUT
35	642-071W	1	SPRING ANCHOR

FENDER ASSEMBLY

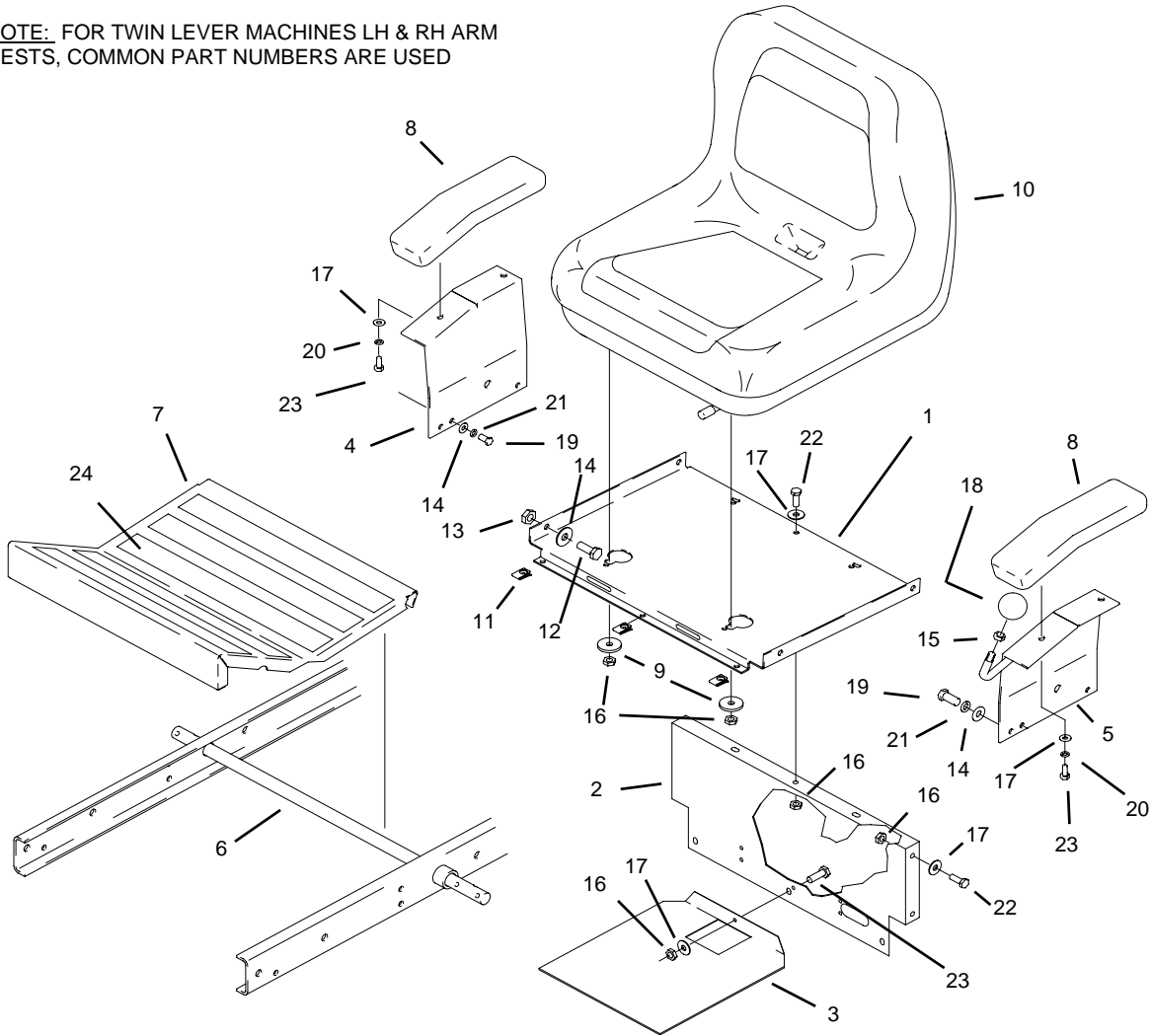


REF. NO.	PART NO.	QTY.	DESCRIPTION
1	642-133A	1	FENDER CAP RH. W/DECAL
--	642-140A	1	FDR. CAP RH. 2 LEV & DECAL
2	642-134A	1	FENDER SKIRT RH. W/DECAL
3	642-135A	1	FENDER SKIRT LH. W/DECAL
4	642-136A	1	FRONT PANEL "2204M"
--	642-166A	1	FRONT PANEL "2304M"
--	642-141A	1	FRONT PANEL "2504M"
--	642-167A	1	FRONT PANEL "2304KA"
--	642-164A	1	FRONT PANEL "2204MT"
--	642-165A	1	FRONT PANEL "2304MT"
--	642-142A	1	FRONT PANEL "2504MT"
5	642-137A	1	LATCH PLATE RH. W/DECAL
6	642-131P	1	LATCH PLATE LH. (RED)
-----	-----	-----	-----
8	642-049P	1	SIDE PANEL, RH.
9	642-050P	1	SIDE PANEL, LH.
10	644-029P	1	TRIM, FUEL TANK
11	644-030P	1	TRIM, OIL TANK
12	F-1009-02	27	5/16 FLAT WASHER
13	F-1005-02	16	5/16-18 LOCKNUT, NYLOC
14	F-1807	1	1/2" X 2.4 CLEVIS PIN W/SASH
15	F-1879	3	5/16-18 X 1-1/4" GR. 5
16	F-1015-15	21	5/16-18 X 1" GR.5

REF. NO.	PART NO.	QTY.	DESCRIPTION
17	642-023P	1	FENDER CAP LH.
--	642-008P	1	FENDER CAP LH. (2 LEVER)
18	F-1860	8	5/16 U-NUT
19	P-11407	1	DECAL, "CUT HEIGHT"
20	P-10939	1	DECAL, "CAUTION"
21	P-11370	1	DECAL, "WARNING"
22	P-11369	1	DECAL, RH. FENDER CAP
23	P-11382	1	DECAL, PARK BRAKE
24	F-1019-02	3	5/16 LOCK WASHER
25	P-11112	2	DECAL "COUNTRY CLIPPER"
26	P-11286	1	DECAL " COMMERCIAL"
27	P-11380	1	DECAL "2204M"
--	P-11516	1	DECAL "2304M"
--	P-11381	1	DECAL "2504M"
--	P-11514	1	DECAL "2204MT"
--	P-11517	1	DECAL "2304MT"
--	P-11395	1	DECAL "2504MT"
--	P-11521	1	DECAL "2304KA"

SEAT, FOOT DECK & RELATED PARTS

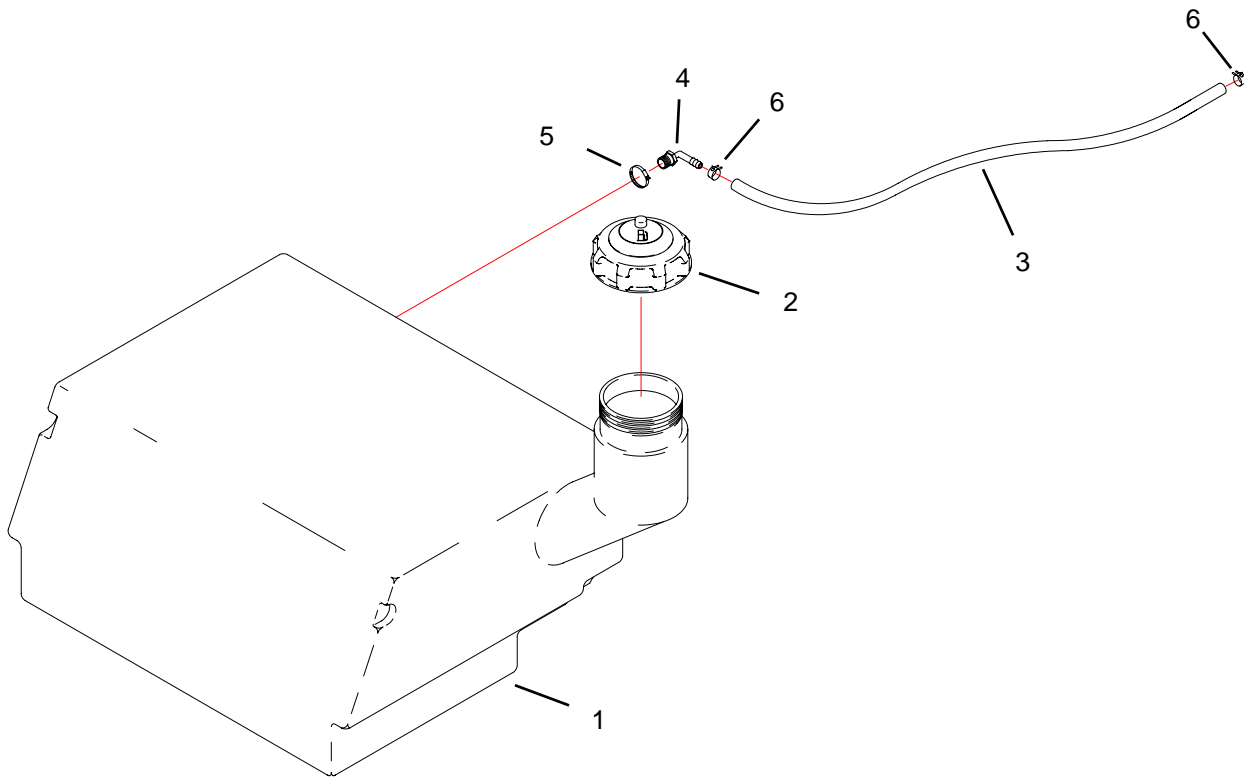
NOTE: FOR TWIN LEVER MACHINES LH & RH ARM RESTS, COMMON PART NUMBERS ARE USED



REF. NO.	PART NO.	QTY.	DESCRIPTION
1	642-030P	1	SEAT BRACKET
2	642-086P	1	REAR BRACE
3	642-132P	1	TANK SHIELD
4	636-127P	1	ARM REST, RH. (JOYSTICK)
--	636-163P	1	ARM REST, RH. (TWINSTICK)
5	636-130W	1	ARM REST, LH. (JOYSTICK)
--	636-163P	1	ARM REST, LH. (TWINSTICK)
6	620-051P	1	LIFT BAR
7	642-139A	1	FOOT DECK ASSEMBLY
8	621-143A	2	ARM REST PAD
9	609-034P	2	FLAT WASHER
10	H-2229	1	SEAT
--	H-2274	1	SEAT, DELUXE
11	F-1860	3	U-NUT 5/16-18
12	F-1394	4	3/8-16 X 1" GR. 5
13	F-1239	4	3/8-16 LOCKNUT
14	F-1009-03	4	3/8 FLAT WASHER
15	F-1011-03	1	3/8-16 PLAIN NUT
16	F-1005-02	14	5/16-18 LOCKNUT
17	F-1009-02	10	5/16 FLAT WASHER
18	H-2130	1	GRIP BALL

REF. NO.	PART NO.	QTY.	DESCRIPTION
19	F-1755	4	3/8-16 X 1/2" GR. 5
20	F-1019-02	4	5/16 LOCK WASHER
21	F-1019-03	4	3/8 LOCK WASHER
22	F-1546	4	5/16-18 X 3/4" GR. 5
23	F-1015-15	5	5/16-18 X 1" GR. 5
24	H-1931	5	SAFETY TREAD

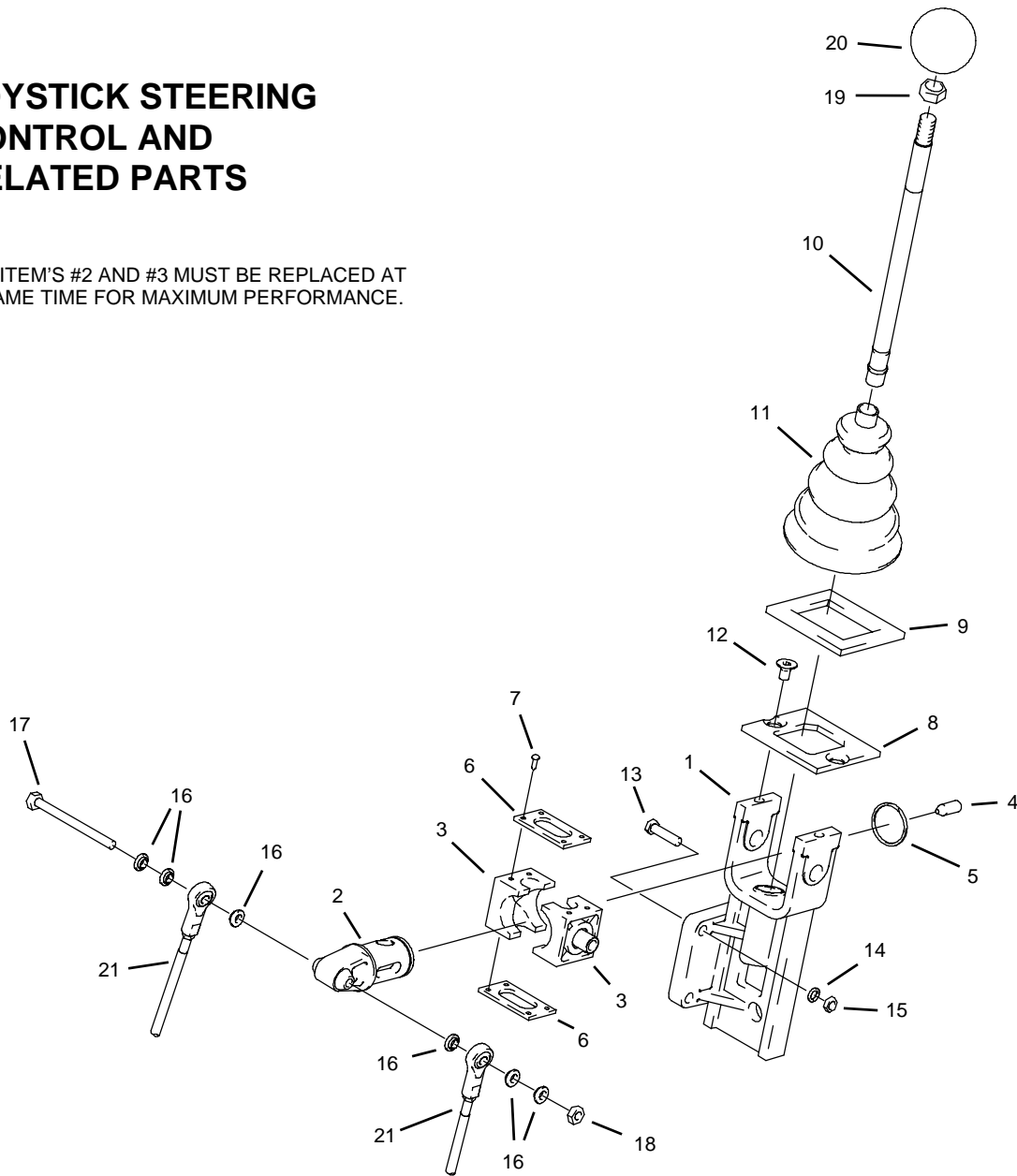
FUEL TANK ASSEMBLY



REF. NO.	PART NO.	QTY.	DESCRIPTION
1	H-2234	1	11 GALLON TANK
2	H-2232	1	GAS CAP
3	644-034P	1	29-1/2" FUEL LINE
--	642-155P	1	39-1/2" FUEL LINE (2304KA ONLY)
4	H-1646	1	HOSE BARB, 90 DEG.
5	H-1952	1	HOSE CLAMP
6	H-1687	2	HOSE CLAMP, 1/2"

JOYSTICK STEERING CONTROL AND RELATED PARTS

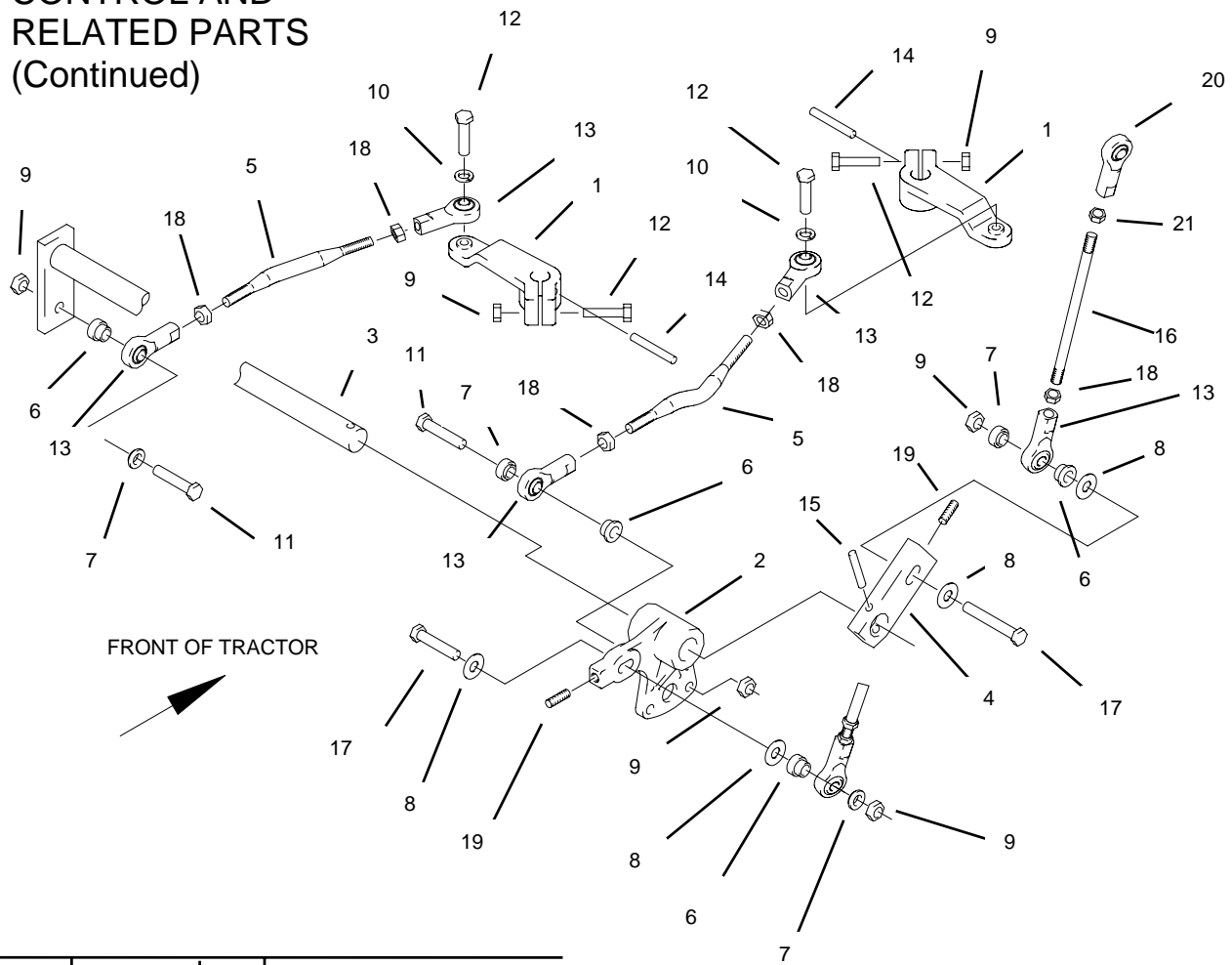
NOTE: ITEM'S #2 AND #3 MUST BE REPLACED AT THE SAME TIME FOR MAXIMUM PERFORMANCE.



REF. NO.	PART NO.	QTY.	DESCRIPTION
--	636-141A	1	JOYSTICK ASS'Y.
1	621-124P	1	JOYSTICK YOKE
2	H-1992	1	PIVOT SHAFT
3	619-307P	2	PIVOT BLOCK
4	F-1120	1	BALL PLUNGER
5	H-1997	1	SNAP RING, SPIRLOCK
6	619-306P	2	PIVOT BLOCK PLATE
7	F-1624	8	#6-32 X 3/8" SCREW SLOT
8	636-140P	1	JOYSTICK TOP PLATE
9	F-1947	1	GASKET, FOAM
10	621-140A	1	JOYSTICK SHAFT ASS'Y.

REF. NO.	PART NO.	QTY.	DESCRIPTION
11	H-1991	1	BOOT, BELLOWS
12	F-1714	2	1/4-20 X 1/2" FHCS GR. 5
13	F-1015-05	3	1/4-20 X 1" HHCS GR. 5
14	F-1019-01	3	1/4" LOCKWASHER
15	F-1005-01	3	1/4-20 LOCKNUT, NYLOC
16	H-1989	6	BUSHING, BALL JOINT
17	F-1765	1	1/4-20 X 3" HHCS GR. 5
18	F-1158	1	1/4-20 LOCKNUT, STOVER
19	F-1011-03	1	3/8-16 NUT, JAM
20	H-2130	1	GRIP, BALL
21	H-2125	2	UPPER LINKAGE

JOYSTICK STEERING CONTROL AND RELATED PARTS (Continued)



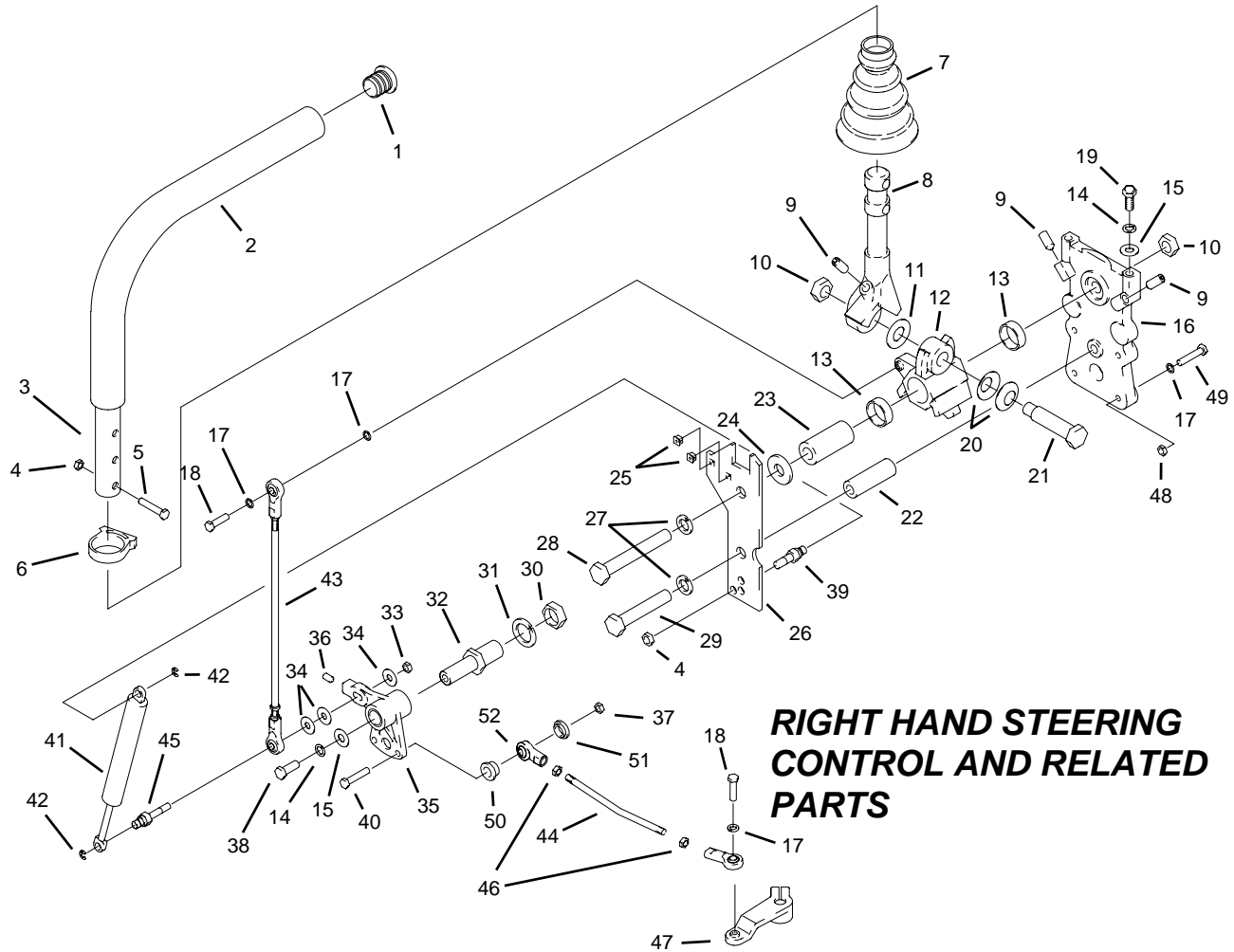
REF. NO.	PART NO.	QTY.	DESCRIPTION
1	625-026P	2	SHIFT ARM
2	638-027A	1	LINKAGE DISK ASSEMBLY
3	636-078W	1	SHIFT ROD
4	625-030P	1	SWIVEL ARM
5	642-097P	2	LOWER LINKAGE ROD
6	H-1987	4	LARGE BUSHING
7	H-1989	4	SMALL BUSHING
8	F-1009-01	4	1/4" FLAT WASHER
9	F-1158	6	1/4-20 LOCKNUT
10	F-1019-01	2	1/4" LOCKWASHER
11	F-1716	2	1/4-20 X 1-1/2 GR. 5
12	F-1015-05	4	1/4-20 X 1" GR. 5
13	H-1885	6	BALL JOINT
14	F-1725	2	ROLL PIN, 5MM X 26 MM
15	F-1503	1	ROLL PIN, 3/16X1"
16	625-024P	2	UPPER LINKAGE ROD
17	F-1864	2	1/4-20 X 1-3/4 GR. 5
18	F-1487	6	1/4-28 JAM NUT
19	F-1695	2	SET SCREW 1/2" LONG
20	H-2076	2	BALL JOINT, LH THREAD
21	F-1814	2	1/4-28 JAM NUT, LH

1 625-024P
 1 F-1487
 1 F-1814
 ASSEMBLY
 1 H-2076
 1 H-1885

H-2125
 UPPER LINKAGE

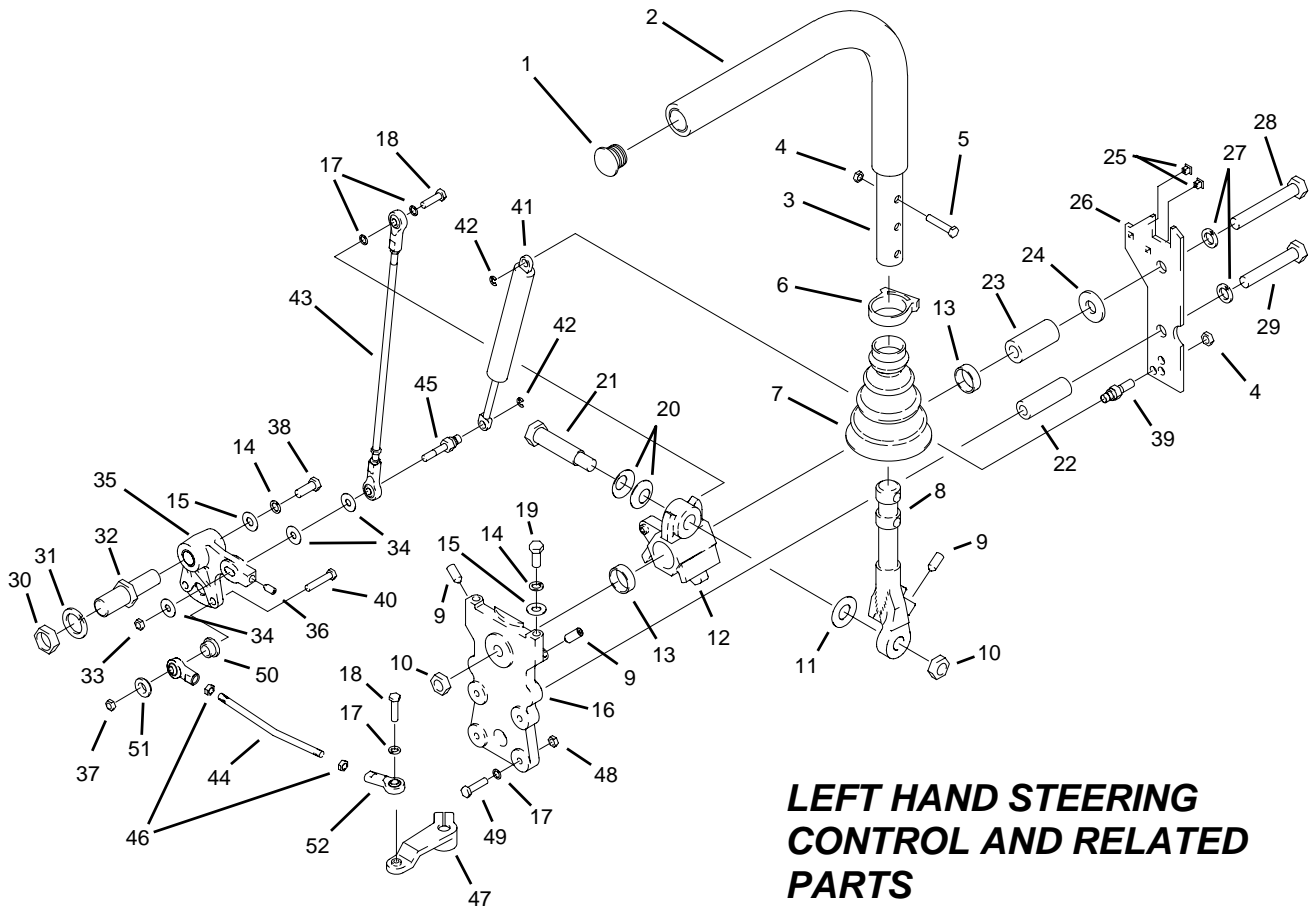
1 642-097P
 2 F-1487
 2 H-1885

642-096A
 LOWER LINKAGE ASSEMBLY



REF. NO.	PART NO.	QTY.	DESCRIPTION
1	H-2080	1	END PLUG, 15/16" BLACK
2	H-2079	1	FOAM GRIP, 17"
3	642-004A	1	CONTROL LEVER ASS'Y
4	F-1005-02	3	5/16-18 LOCKNUT, NYLOC
5	F-1015-17	2	5/16-18 X 1-1/2" HHCS GR. 5
6	H-2089	1	HOSE CLAMP
7	H-2081	1	BOOT, TAPERED 1" CUFF
8	625-063P	1	LEVER, DUALEVER
9	F-1842	3	SETSCREW, 5/16-18 X 3/4"
10	F-1489	2	1/2-13 NUT, JAM
11	H-2116	1	WASHER, FIBER
12	638-033P	1	PIVOT BLOCK, DUALEVER
13	D-3622	2	BEARING
14	F-1019-02	2	5/16" LOCKWASHER
15	F-1009-02	2	WASHER, FLAT STD. 5/16"
16	638-034P	1	BASE, DUALEVER
17	F-1019-01	11	1/4" LOCKWASHER
18	F-1015-05	1	1/4-20 X 1" HHCS GR. 5
19	F-1546	1	5/16-18 X 3/4" HHCS GR. 5
20	H-2115	2	WASHER, SPRING
21	625-070P	1	SHOULDER BOLT, 5/8" O.D.
22	625-067P	1	BUSHING, STAND-OFF
23	625-064P	1	BUSHING, PIVOT BLOCK
24	625-072P	1	WASHER, FLAT
25	F-1847	2	GROMMET, #4 X 1/4" SQ.
26	625-065P	1	TOP PLATE, DUALEVER

REF. NO.	PART NO.	QTY.	DESCRIPTION
27	F-1464	2	1/2" LOCKWASHER
28	F-1828	1	1/2-13 X 3-1/2" HHCS GR. 5
29	F-1439	1	1/2-13 X 3" HHCS GR. 5
30	F-1011-07	1	3/4-10, NUT, PLAIN
31	F-1463	1	3/4" LOCKWASHER
32	623-048P	1	LINKAGE PINTLE
33	F-1158	1	1/4-20 LOCKNUT, STOVER
34	F-1009-01	3	WASHER, FLAT STD. 1/4"
35	638-027A	1	LINKAGE DISC ASSEMBLY
36	F-1695	1	SETSCREW, 1/4-20 X 3/8"
37	F-1011-01	1	1/4-20 NUT, PLAIN
38	F-1015-14	1	5/16-18 X 7/8" HHCS GR. 5
39	638-028P	1	DAMPER BOLT, 5/16-18 X 3/4
40	F-1716	1	HHCS, 1/4-20 X 1-1/2 GR5
41	H-2168	1	STEERING DAMPER
42	F-1610	2	E-RING FOR 1/4" SHAFT
43	H-2125	1	UPPER LINKAGE
44	642-097P	1	LOWER LINKAGE
45	638-029P	1	DAMPER BOLT, 1/4-20
46	F-1487	2	NUT, HEX 1/4-28 UNF
47	625-026P	1	SHIFT ARM
48	F-1005-01	4	1/4-20 LOCKNUT, NYLOC
49	F-1539	3	1/4-20 X 1-1/4 HHCS GR. 5
50	H-1987	1	BUSHING, LARGE
51	H-1989	1	BUSHING, SMALL
52	H-1885	2	BALL JOINT

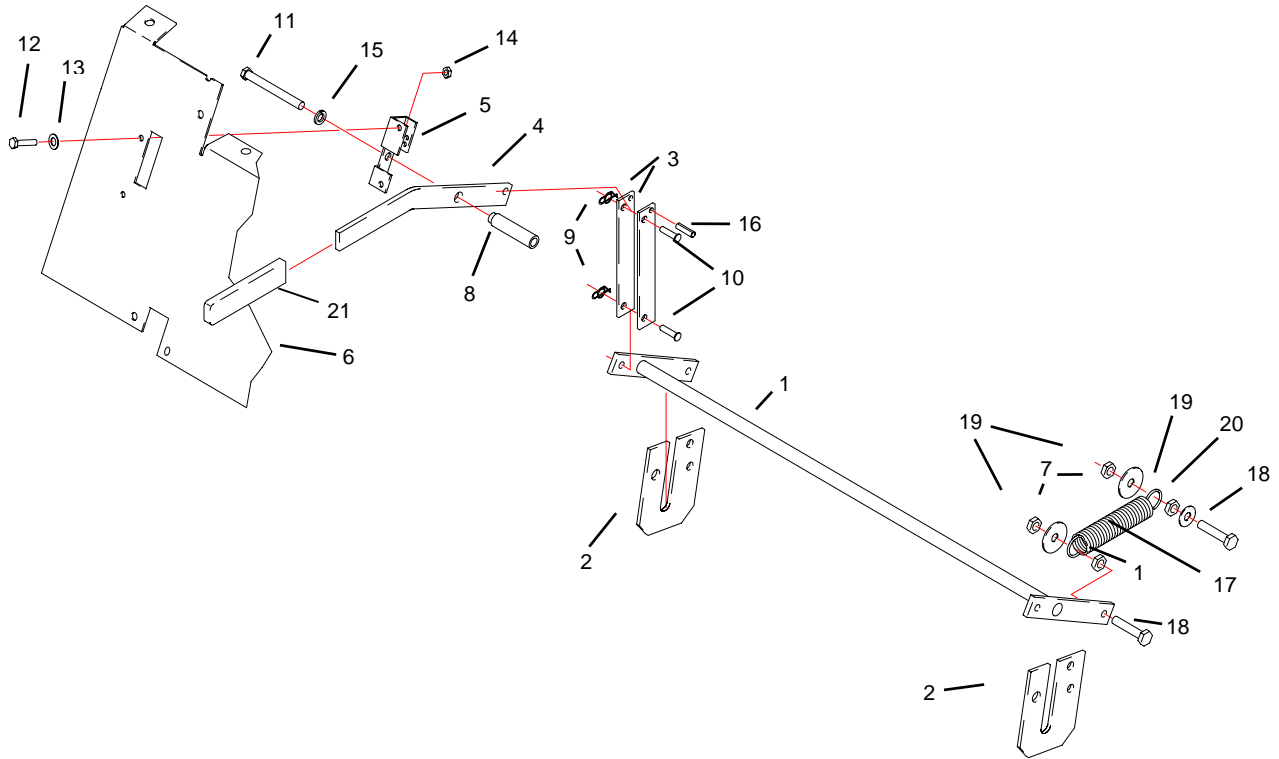


**LEFT HAND STEERING
CONTROL AND RELATED
PARTS**

REF. NO.	PART NO.	QTY.	DESCRIPTION
1	H-2080	1	END PLUG, 15/16" BLACK
2	H-2079	1	FOAM GRIP, 17"
3	642-004A	1	CONTROL LEVER ASS'Y
4	F-1005-02	3	5/16-18 LOCKNUT, NYLOC
5	F-1015-17	2	5/16-18 X 1-1/2" HHCS GR. 5
6	H-2089	1	HOSE CLAMP
7	H-2081	1	BOOT, TAPERED 1" CUFF
8	625-063P	1	LEVER, DUALEVER
9	F-1842	3	SETSCREW, 5/16-18 X 3/4"
10	F-1489	2	1/2-13 NUT, JAM
11	H-2116	1	WASHER, FIBER
12	638-033P	1	PIVOT BLOCK, DUALEVER
13	D-3622	2	BEARING
14	F-1019-02	2	5/16" LOCKWASHER
15	F-1009-02	2	WASHER, FLAT STD. 5/16"
16	638-034P	1	BASE, DUALEVER
17	F-1019-01	11	1/4" LOCKWASHER
18	F-1015-05	1	1/4-20 X 1" HHCS GR. 5
19	F-1546	1	5/16-18 X 3/4" HHCS GR. 5
20	H-2115	2	WASHER, SPRING
21	625-070P	1	SHOULDER BOLT, 5/8" O.D.
22	625-067P	1	BUSHING, STAND-OFF
23	625-064P	1	BUSHING, PIVOT BLOCK
24	625-072P	1	WASHER, FLAT
25	F-1847	2	GROMMET, #4 X 1/4" SQ
26	625-065P	1	TOP PLATE, DUALEVER

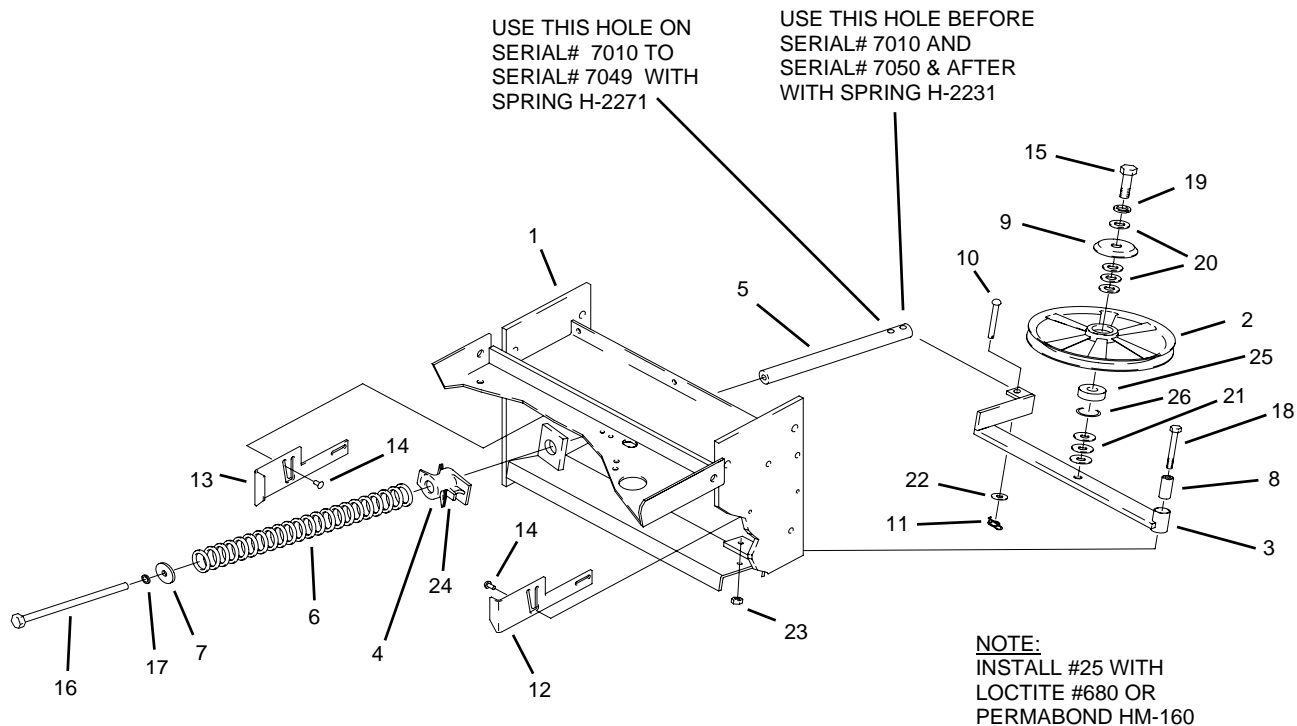
REF. NO.	PART NO.	QTY.	DESCRIPTION
27	F-1464	2	1/2" LOCKWASHER
28	F-1828	1	1/2-13 X 3-1/2" HHCS GR. 5
29	F-1439	1	1/2-13 X 3" HHCS GR. 5
30	F-1011-07	1	3/4-10, NUT, PLAIN
31	F-1463	1	3/4" LOCKWASHER
32	623-048P	1	LINKAGE PINTLE
33	F-1158	1	1/4-20 LOCKNUT, STOVER
34	F-1009-01	3	WASHER, FLAT STD. 1/4"
35	638-027A	1	LINKAGE DISC ASSEMBLY
36	F-1695	1	SETSCREW, 1/4-20 X 3/8"
37	F-1011-01	1	1/4-20 NUT, PLAIN
38	F-1015-14	1	5/16-18 X 7/8" HHCS GR. 5
39	638-028P	1	DAMPER BOLT, 5/16-18 X 3/4
40	F-1716	1	HHCS, 1/4-20 X 1-1/2 GR5
41	H-2168	1	STEERING DAMPER
42	F-1610	2	E-RING FOR 1/4" SHAFT
43	H-2125	1	UPPER LINKAGE
44	642-097P	1	LOWER LINKAGE
45	638-029P	1	DAMPER BOLT, 1/4-20
46	F-1487	2	NUT, HEX 1/4-28 UNF
47	625-026P	1	SHIFT ARM
48	F-1005-01	4	1/4-20 LOCKNUT, NYLOC
49	F-1539	3	1/4-20 X 1-1/4 HHCS GR. 5
50	H-1987	1	BUSHING, LARGE
51	H-1989	1	BUSHING, SMALL
52	H-1885	2	BALL JOINT

PARKING BRAKE ASSEMBLY & RELATED PARTS



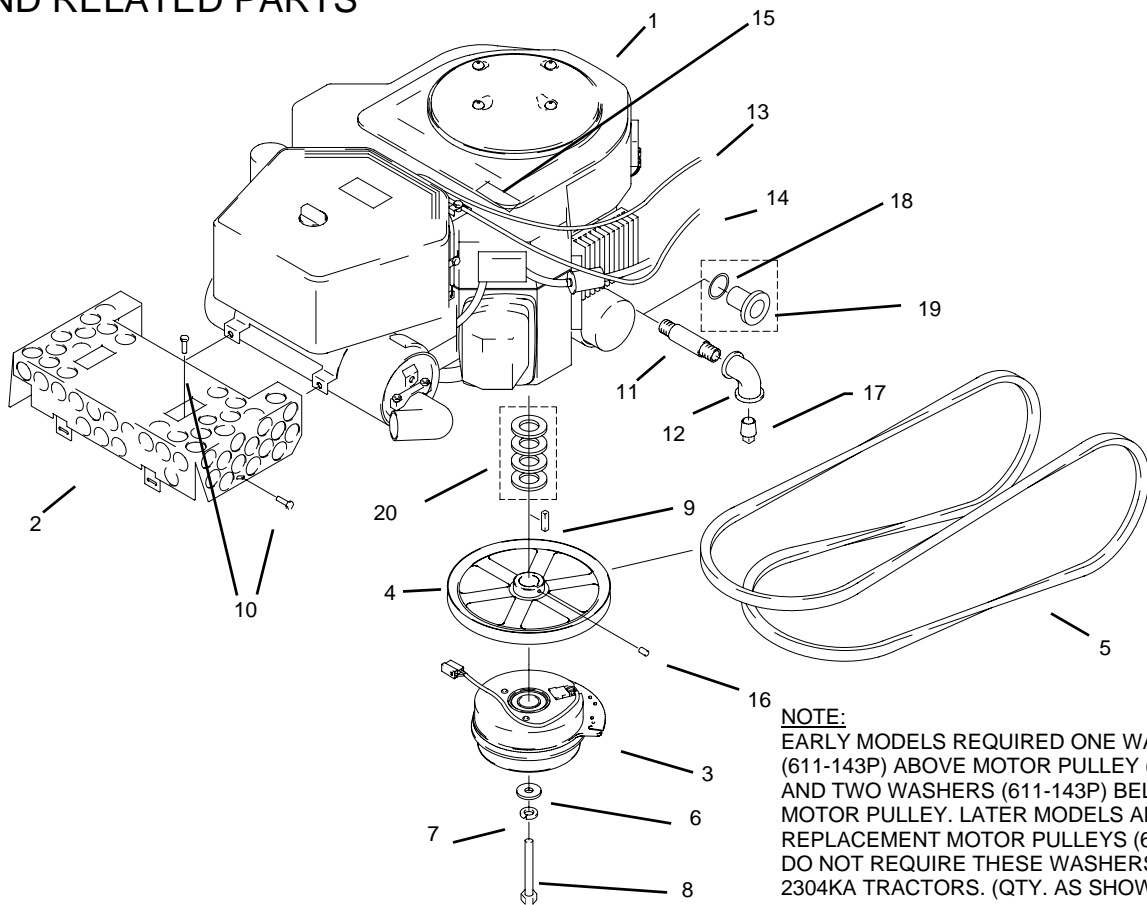
REF. NO.	PART NO.	QTY.	DESCRIPTION
1	642-033W	1	BRAKE ROD WLDT.
2	642-042P	2	BRAKE ROD MOUNT
3	642-058P	2	BRAKE LINK
4	642-056P	1	BRAKE HANDLE
5	642-054P	1	BRAKE SWITCH BRACKET
6	642-057P	1	FRONT PANEL
7	609-034P	4	FLAT WASHER
8	642-027P	1	BRAKE PIVOT TUBE
9	F-1492	4	RUE RING
10	F-1443	4	5/16" PIN
11	F-1827	1	3/8-16-18 X 3-1/2" GR. 5
12	F-1538	2	1/4-20 X 3/4 GR.5
13	F-1009-01	2	1/4" FLAT WASHER
14	F-1005-01	2	1/4-20 LOCKNUT
15	F-1019-03	1	3/8 LOCKWASHER
16	F-1831	1	1/4 X 1" ROLLPIN
17	H-2092	2	SPRING
18	F-1879	4	5/16-18 X 1-1/4 GR. 5
19	F-1125	8	5/16-18 LOCKNUT
20	F-1009-02	2	5/16 FLAT WASHER
21	H-1926	1	BRAKE HANDLE GRIP

MOTOR MOUNT ASSEMBLY



REF. NO.	PART NO.	QTY.	DESCRIPTION
1	642-124W	1	MOTOR MOUNT
2	642-003W	1	IDLER PULLEY
3	642-121W	1	IDLER ARM
4	H-2114	1	TAIL STOP
5	642-123W	1	TAKE UP PIPE (TO SERIAL# 7049)
	642-158W	1	TAKE UP PIPE (SERIAL#7050 & AFTER)
6	H-2231	1	SPRING (TO SERIAL# 7009) & (SERIAL#7050 & AFTER)
	H-2271	1	SPRING (SERIAL# 7010 TO #7049)
7	609-034P	1	SPINDLE SPACER
8	621-103P	1	MOUNTING PIN
9	620-201P	1	BEARING CAP
10	F-1550	1	CLEVIS PIN, 3/8 X 2"
11	F-1492	1	RUE RING, 5/16-3/8 PIN
12	621-076P	1	FREEWHEEL BAR,RH
13	621-075P	1	FREEWHEEL BAR LH.
14	F-1733	4	F-1733
15	F-1293	1	1/2-13 X 2" GR. 5
16	F-1818	1	3/8-16 X 6" FULL THREAD
17	F-1019-03	1	3/8 LOCK WASHER
18	F-1536	1	5/16-18 X 2-1/2" GR. 5
19	F-1464	1	1/2 LOCKWASHER
20	F-1521	4	1/2" WASHER
21	F-1009-05	3	1/2 FLAT WASHER
22	F-1009-02	1	5/16 FLAT WASHER
23	F-1125	1	5/16 LOCKNUT
24	H-2253	1	LEAF SPRING
25	D-3591	1	BEARING
26	D-3483	1	SNAP RING

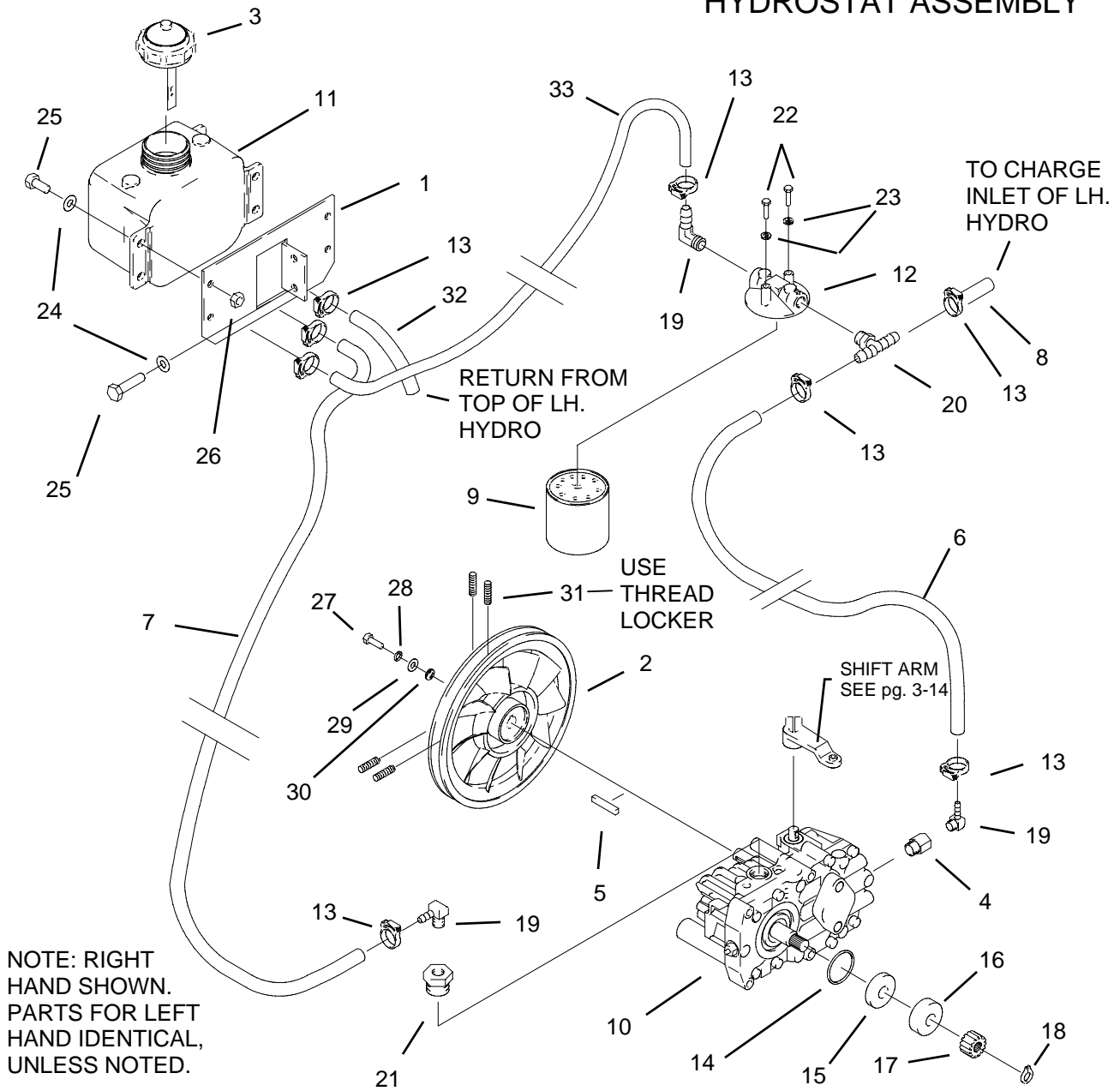
MOTOR ASSEMBLY AND RELATED PARTS



NOTE:
 EARLY MODELS REQUIRED ONE WASHER (611-143P) ABOVE MOTOR PULLEY (642-002W) AND TWO WASHERS (611-143P) BELOW MOTOR PULLEY. LATER MODELS AND REPLACEMENT MOTOR PULLEYS (642-002W) DO NOT REQUIRE THESE WASHERS EXCEPT 2304KA TRACTORS. (QTY. AS SHOWN)

REF. NO.	PART NO.	QTY.	DESCRIPTION
1	M-5315	1	22 HP. KOHLER ENGINE
-	M-5325	1	23 HP. KOHLER ENGINE
-	M-5316	1	25 HP. KOHLER ENGINE
-	M-5324	1	23 HP. KAWASAKI ENGINE
2	620-270P	1	MUFFLER GUARD
3	E-6247	1	CLUTCH, MAGSTOP 1-1/8"
4	642-002W	1	MOTOR PULLEY
5	D-3644	1	HYDRO BELT, A-112 (SPECIAL BELT)
--	D-3664	1	HYDRO BELT, A-112 (SPECIAL BELT) (SERIAL #7050 & AFTER)
6	606-347P	1	WASHER
7	F-1019-04	1	7/16 LOCKWASHER
8	F-1766	1	7/16-20 X 3-1/4"
--	F-1904	1	7/16-20 X 2-1/2" (2304KA ONLY)
9	621-113P	1	KEY, 1/4 SQ. X 1 1/4"
10	F-1231	6	#8 SHEET METEL SCREW
11	H-1343	1	3/8" X 4" PIPE NIPPLE
--	H-1089	1	3/8" X 2", PIPE NIPPLE (2304KA ONLY)
12	H-1218	1	3/8" PIPE ELBOW
13	H-2235	1	CHOKE CABLE
--	H-2287	1	CHOKE CABLE (2304KA ONLY)
14	H-2236	1	THROTTLE CABLE
--	H-2286	1	THROTTLE CABLE (2304KA ONLY)
15	P-10077	1	DECAL, "CLEAN"
16	F-1007-22	1	5/16 SET SCREW
17	1380	1	PLUG, 3/8" NPT
18	D-3446	1	3/4-16 PORT O-RING (2304KA ONLY)
19	H-2285	1	DRAIN ADAPTER (2304KA ONLY)
20	611-143P	4	SHIM WASHERS (2304KA ONLY)

HYDROSTAT ASSEMBLY

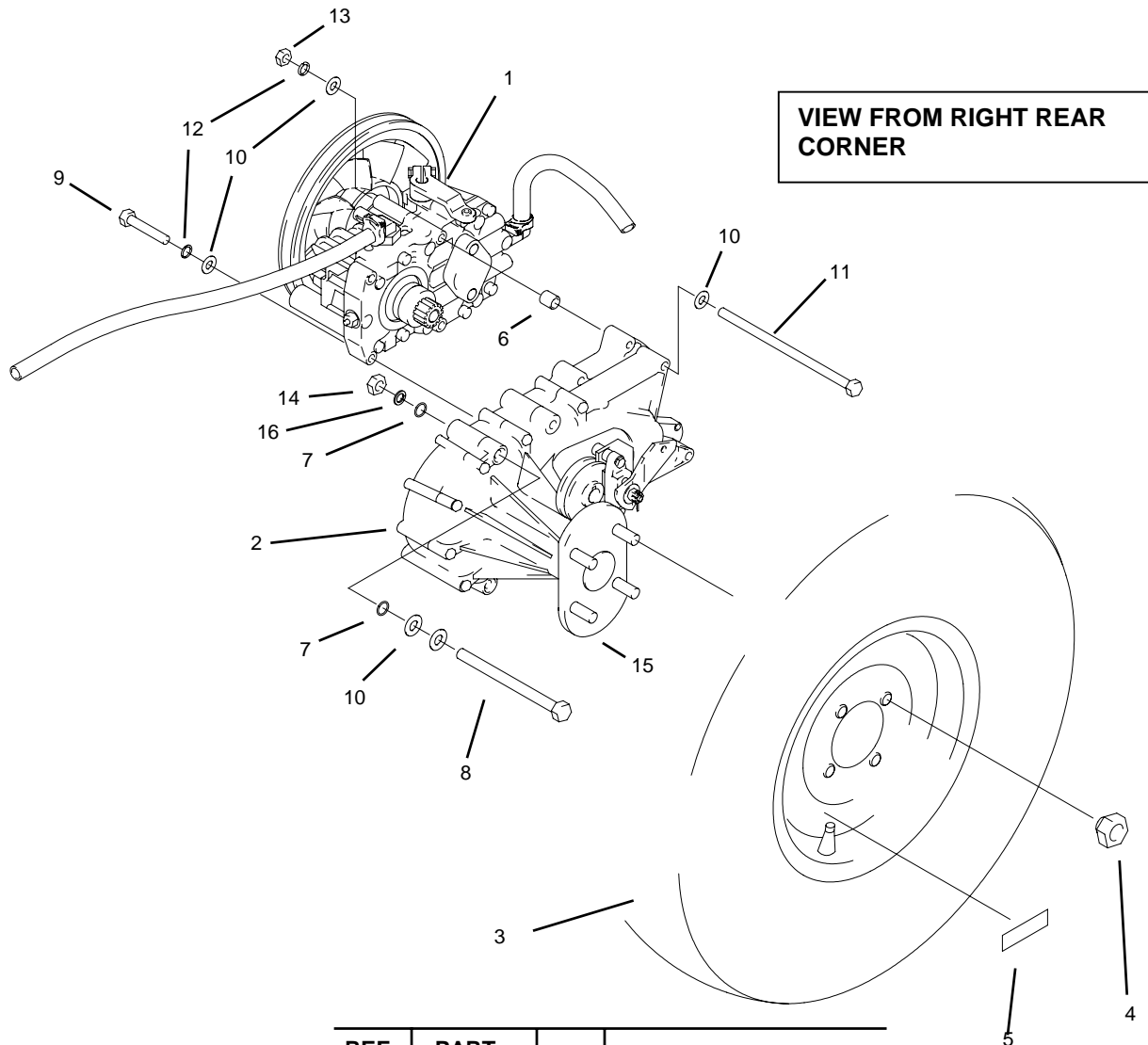


NOTE: RIGHT HAND SHOWN. PARTS FOR LEFT HAND IDENTICAL, UNLESS NOTED.

REF. NO.	PART NO.	QTY.	DESCRIPTION
1	642-052P	1	TANK MOUNT BRACKET
2	642-072P	2	HYDRO FAN PULLEY
3	644-035A	1	CAP, HYDRO TANK
4	620-195P	2	ADAPTER, 7/16 SAE. X 1/4 NPT.
5	642-113P	2	KEY, 5MM.
6	644-031P	1	HOSE, 3/8 X 50"
7	644-032P	1	HOSE, 3/8 X 31"
8	644-033P	1	HOSE, 3/8 X 24 1/2"
9	H-2026	1	FILTER, HYDRO
10	D-3608	1	HYDRO TRANSMISSION, LH
-	D-3609	1	HYDRO TRANSMISSION, RH
11	H-2230	1	TANK, 2 QUART
12	H-2061	1	FILTER BASE
13	H-2282	10	HOSE CLAMP
14	D-3604	2	O-RING
15	H-1943	2	SPACER
16	D-3533	2	BEARING

REF. NO.	PART NO.	QTY.	DESCRIPTION
17	D-3534	2	GEAR
18	F-1740	2	SNAP RING EXT.
19	H-1859	5	90 DEG. HOSE BARB
20	H-2024	1	TEE, PLASTIC
21	H-1950	2	ADAPTER, 7/8-14 X 1/4-18
22	F-1015-05	2	1/4-20 X 1" GR. 5
23	F-1019-01	2	1/4 LOCKNUT
24	F-1009-02	6	5/16 FLAT WASHER
25	F-1546	6	5/16-18 X 3/4 GR. 5
26	F-1005-02	4	5/16-18 LOCKNUT
27	F-1737	2	6MM. X 16MM. GR. 5
28	F-1738	2	6MM. WASHER
29	620-187P	1	WASHER
30	F-1734	2	SNAP RING, INT.
31	F-1891	4	SET SCREW 5/16-18 X 3/8
32	620-198P	1	HOSE, 3/8 X 20 1/2"
33	620-109P	1	HOSE, 3/8 X 19 1/2"

HYDROSTAT/GEAR BOX ASSEMBLY

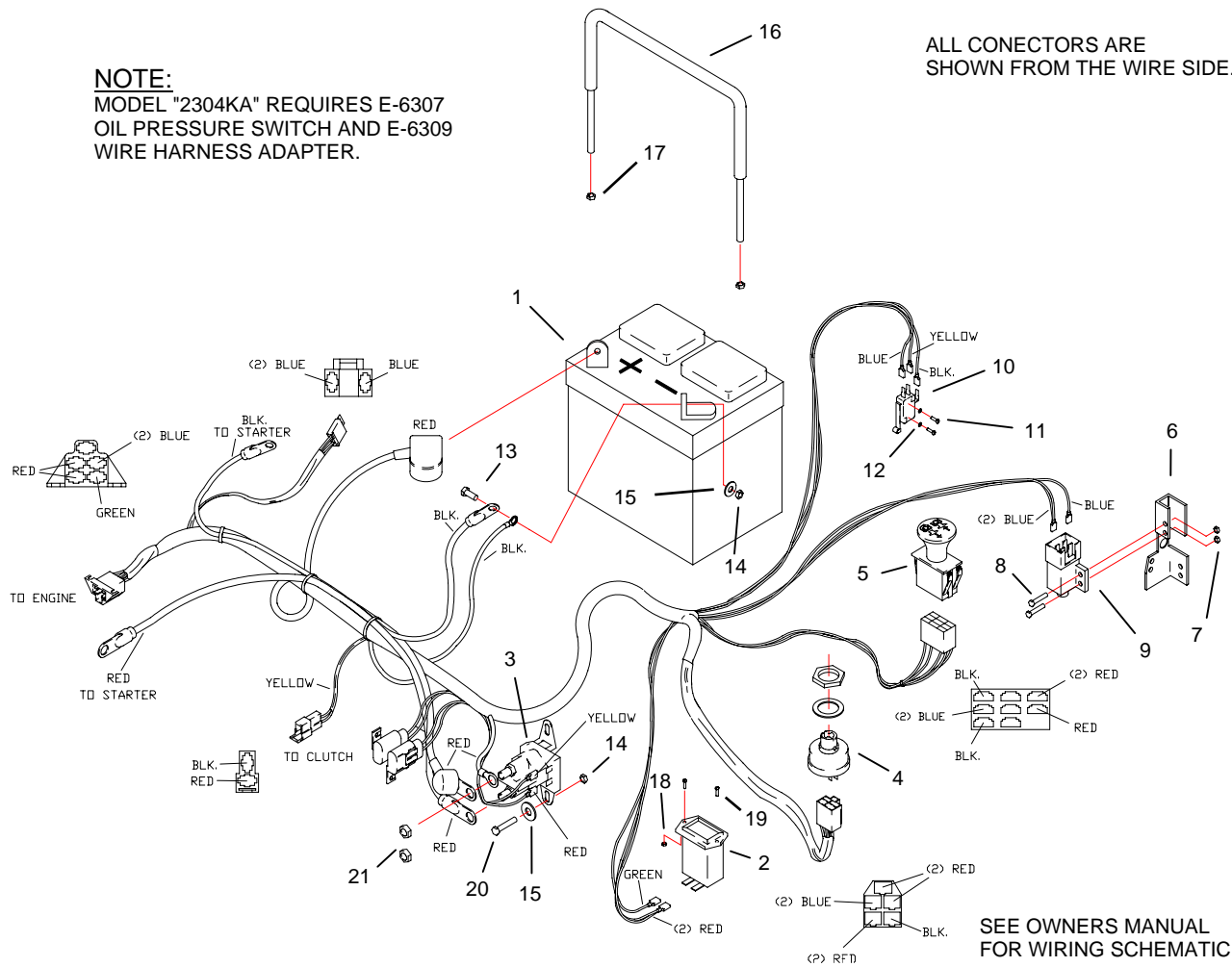


REF. NO.	PART NO.	QTY.	DESCRIPTION
1	-----	1	HYDRO. TRANSMISSION RH
--	-----	1	HYDRO. TRANSMISSION LH
2	D-3613	1	GEAR BOX, RH
--	D-3612	1	GEAR BOX, LH
3	D-3637	2	TIRE, 23-9.50-12 W/RIM
4	F-1499	8	LUG NUT, 1/2-20 X 60 DEG.
5	P-10877	2	DECAL, TIRE PRESSURE
6	H-1944	4	BUSHING
7	D-3614	8	O-RING
8	F-1066	8	3/8-16 X 4" GR. 5
9	F-1015-18	4	5/16-18 X 1-3/4 GR. 5
10	F-1009-02	28	5/16 FLAT WASHER
11	F-1727	4	5/16-18 X 7-1/2 GR. 5
12	F-1019-0	8	5/16 LOCK WASHER
13	F-1125	4	5/16 LOCKNUT
14	F-1239	8	3/8-16 NUT, NYLOC
15	F-1774	8	LUG BOLT, 1/2-20
16	F-1019-03	8	3/8 LOCK WASHER

WIRE HARNESS AND RELATED PARTS

NOTE:
MODEL "2304KA" REQUIRES E-6307
OIL PRESSURE SWITCH AND E-6309
WIRE HARNESS ADAPTER.

ALL CONECTORS ARE
SHOWN FROM THE WIRE SIDE.

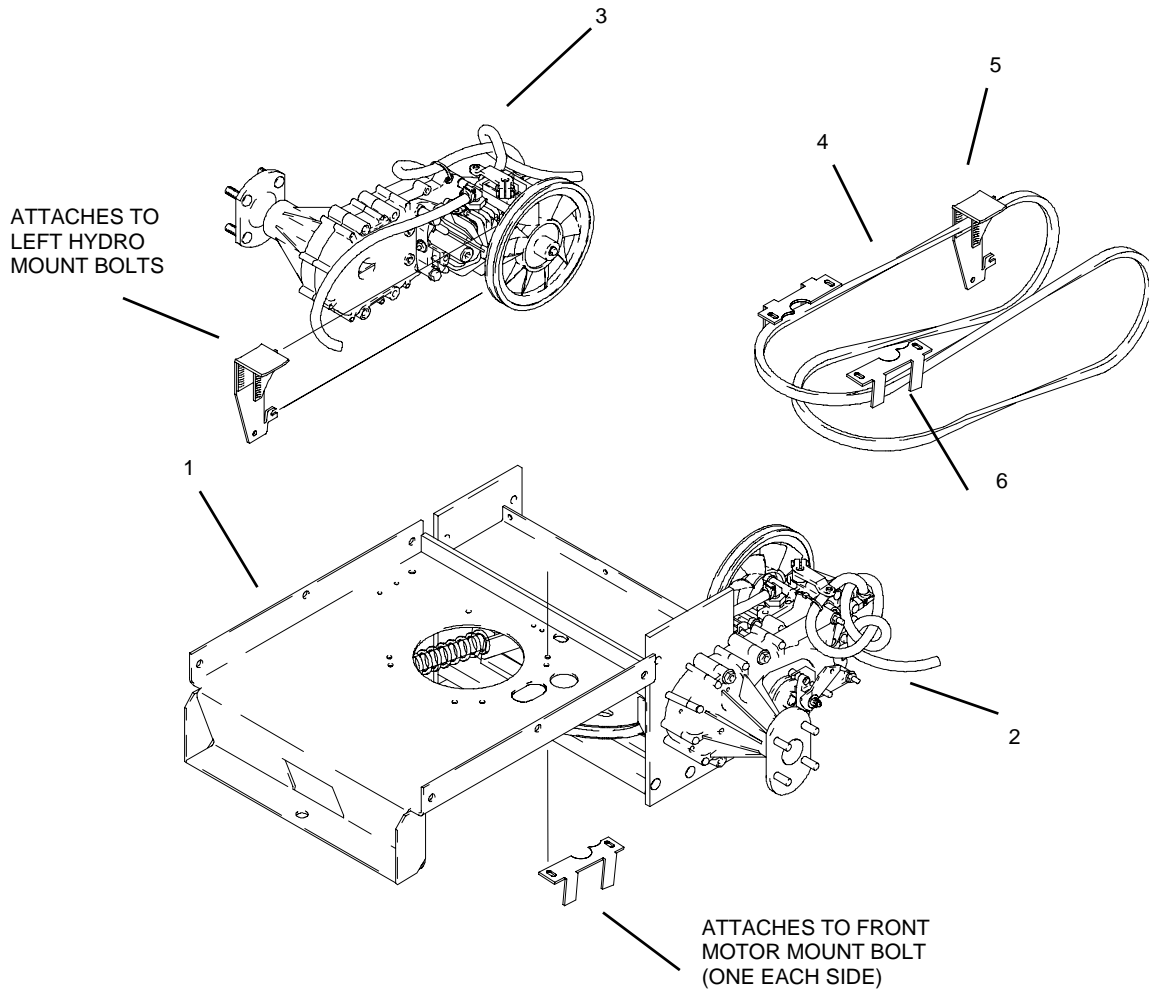


SEE OWNERS MANUAL
FOR WIRING SCHEMATIC.

REF. NO.	PART NO.	QTY.	DESCRIPTION
1	E-5812	1	BATTERY USED ON 22 HP.
--	E-5812	1	BATTERY USED ON 23 HP.
--	E-6271	1	BATTERY USED ON 25 HP.
2	E-5878	1	HOUR METER
3	E-6054	1	SOLENOID
4	E-5873	1	START SWITCH
5	E-6296	1	CLUTCH SWITCH
6	642-054p	1	BRAKE SWITCH BRACKET
7	F-1448	2	8-32 LOCKNUT
8	F-1022-26	2	8-32 X 5/8 SCREW
9	E-6297	1	BRAKE SWITCH
10	E-6074	1	SWITCH, SPDT MINI
11	F-1396	2	4-40 X 3/4 SCREW
12	F-1621	2	STAR WASHER
13	F-1538	2	1/4-20 X 3/4 GR. 5
14	F-1005-01	6	1/4-20 LOCKNUT
15	F-1009-01	4	1/4" FLAT WASHER
16	642-051P	1	BATTERY STRAP

REF. NO.	PART NO.	QTY.	DESCRIPTION
17	-	-	-
18	F-1535	2	6-32 LOCKNUT
19	F-1054	2	6-32 X 5/8 SCREW
20	F-1015-02	2	1/4-20 X 5/8 GR. 5
21	F-1567	2	5/16-24 NUT
	E-6281	1	COVER (KEY SWITCH) -NOT SHOWN-
	E-6307	1	OIL PRESSURE SWITCH (2304KA ONLY) -NOT SHOWN-
	E-6309	1	WIRE HARNESS ADAPTER (2304KA ONLY) -NOT SHOWN-

HYDRO BELT GUIDE ASSEMBLY



REF. NO.	PART NO.	QTY.	DESCRIPTION
1	642-124W	1	MOTOR MOUNT WELDMENT
2	-	1	RH HYDRO ASS'Y
3	-	1	LH HYDRO ASS'Y
4	D-3644	1	HYDRO BELT, A-112 (SPECIAL BELT)
---	D-3664	1	HYDRO BELT, A-112 (SPECIAL BELT) SERIAL #7050 & AFTER
5	642-150W	1	HYDRO BELT GUIDE WELDMENT
6	642-146P	2	MOTOR BELT GUIDE