

REPAIR PARTS MANUAL

FOR

COUNTRY
CLIPPER[®]

THE BOSS[™]

SR1200

COUNTRY CLIPPER "THE BOSS" ZERO TURN RADIUS MOWER

TABLE OF CONTENTS

PAGE.... CONTENTS

SECTION 1 – MOWER DECKS AND RELATED PARTS

- 1-1.52" DECK ASSEMBLY
- 1-260" DECK ASSEMBLY
- 1-372" DECK ASSEMBLY
- 1-4.DECK SPINDLE ASSEMBLY
- 1-5.DRIVE BELT IDLER & RELATED PARTS
- 1-6.LIFT HANDLE ASSEMBLY & RELATED PARTS
- 1-7LIFT ASSEMBLY & RELATED PARTS
- 1-8LIFT ASSEMBLY AND RELATED PARTS (72" BOSS)
- 1-9.DOUBLE IDLER & RELATED PARTS

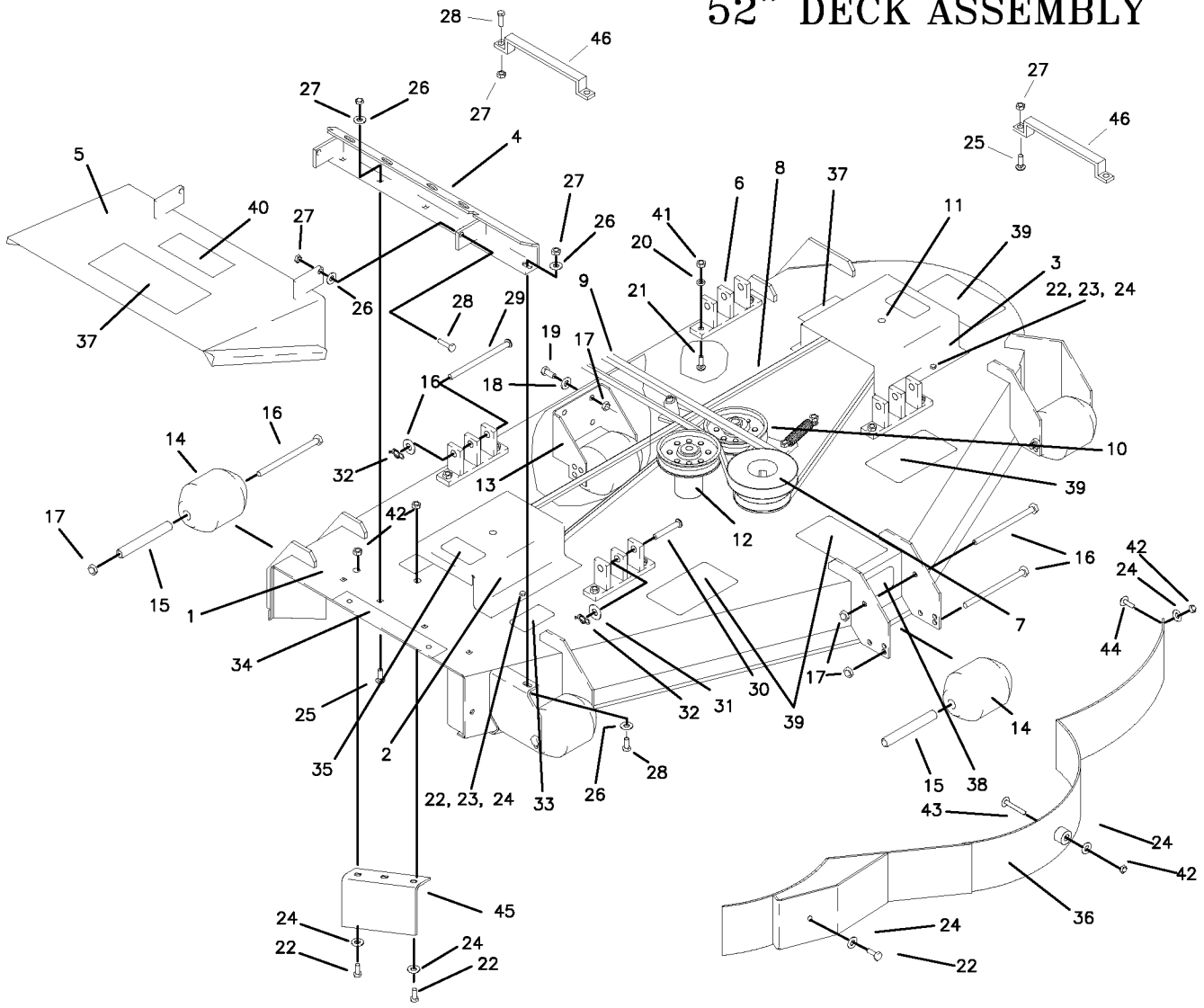
SECTION 2 –TRACTOR FRAME AND RELATED PARTS

- 2-10. . . .CASTER WHEEL ASSEMBLY
- 2-11. . . .FRAME SIDES & RELATED PARTS
- 2-12. . . .FENDER ASSEMBLY
- 2-13. . . .SEAT, FOOT DECK & RELATED PARTS

SECTION 3 –TRACTOR DRIVE AND RELATED PARTS

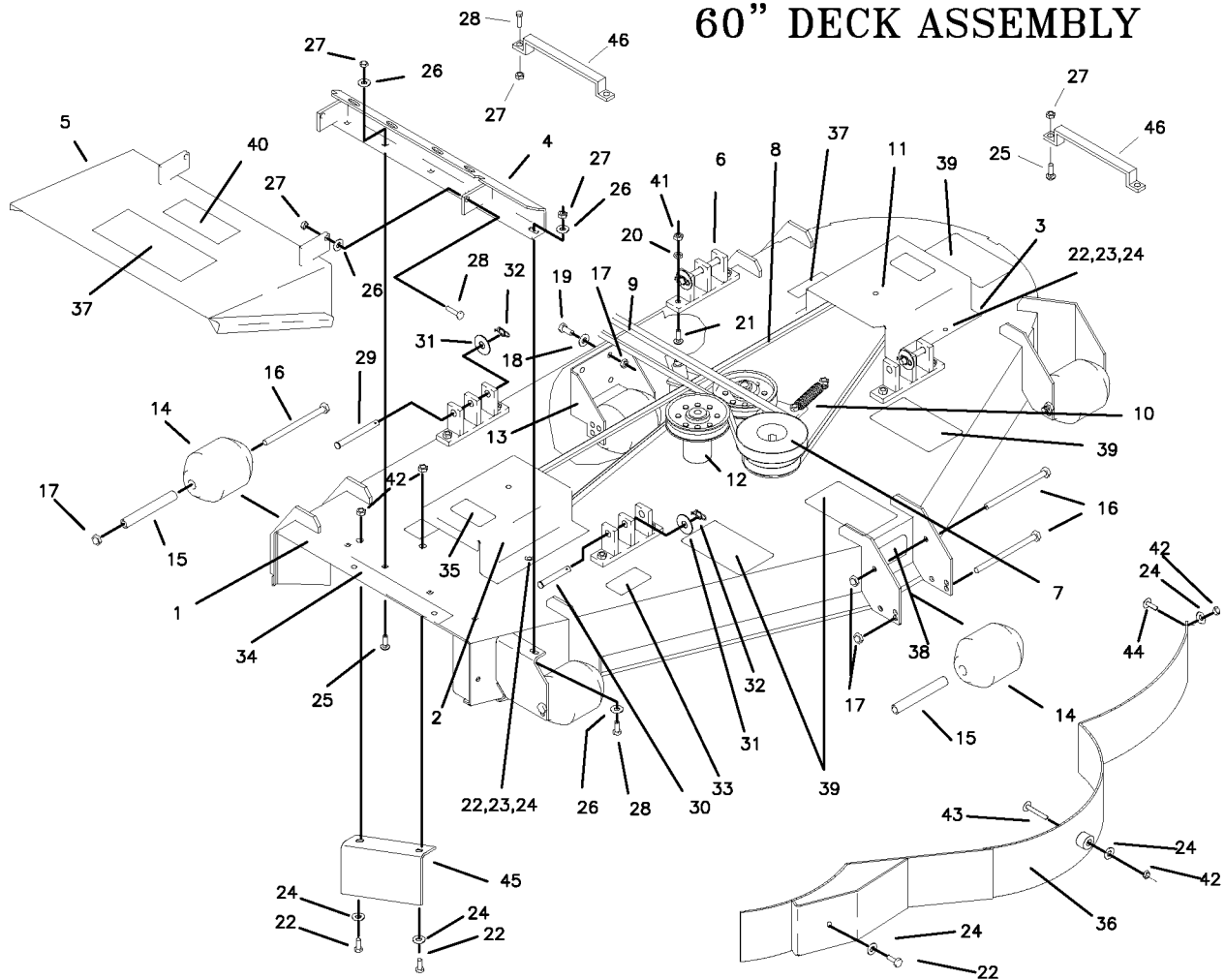
- 3-14. . . .DECK FLIP/TIRE JACK & FUEL TANK ASSEMBLY
- 3-15. . . .JOYSTICK STEERING CONTROL & RELATED PARTS
- 3-16. . . .JOYSTICK STEERING CONTROL & RELATED PARTS SR-1200
- 3-17. . . .JOYSTICK STEERING CONTROL & RELATED PARTS (continued)
- 3-18. . . .RIGHT HAND STEERING CONTROL & RELATED PARTS
- 3-19. . . .LEFT HAND STEERING CONTROL & RELATED PARTS
- 3-20. . . .PARKING BRAKE ASSEMBLY & RELATED PARTS
- 3-21. . . .GEAR MOTOR WHEEL ASSEMBLY
- 3-22. . . .MOTOR ASSEMBLY & RELATED PARTS
- 3-23. . . .HIGH PRESSURE LINES & FITTINGS
- 3-24. . . .OIL RETURN LINES & COOLER ASSEMBLY
- 3-25. . . .MOTOR TO PUMP SINGLE IDLER
- 3-26. . . .WIRE HARNESS & RELATED PARTS
- 3-27. . . .WIRE HARNESS & RELATED PARTS SR-1200

52" DECK ASSEMBLY



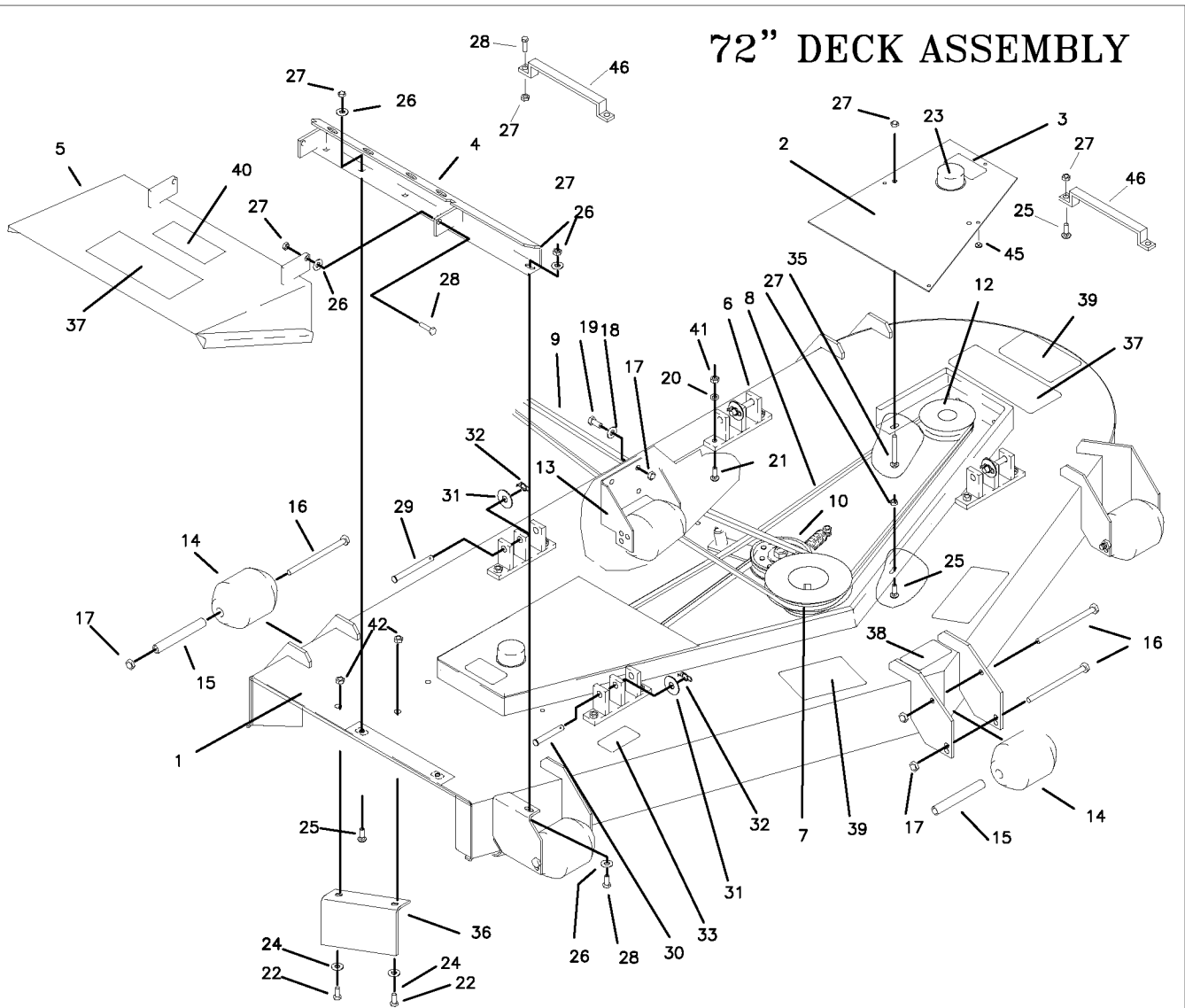
REF NO.	PART NO.	QTY.	DESCRIPTION	REF NO.	PART NO.	QTY.	DESCRIPTION
1	643-033A	1	52" DECK W/DECALS	24	F-1009-01	9	1/4" FLAT WASHER
2	643-034A	1	PULLEY COVER RH, W/DECAL	25	F-1671	6	CARRIAGE BOLT 5/16 X 3/4
3	643-035A	1	PULLEY COVER LH, W/DECAL	26	F-1009-02	8	5/16" FLAT WASHER
4	637-053W	1	OUTLET STIFFENER	27	F-1125	11	5/16-18 LOCKNUT
5	637-062A	1	60" DECK CHUTE W/DECAL	28	F-1015-15	5	5/16-18 X 1" GR. 5
6	643-016W	4	DECK HANGER	29	H-2240	2	PIN, 1/2" X 4-1/2"
7	609D-156P	1	PULLEY, 5-3/4 DIA. 2 GROOVE	30	F-1816	2	PIN, 1/2" X 2-1/2"
8	D-3635	1	V-BELT (KEVLAR) A-100	31	F-1521	4	1/2" FLAT WASHER
9	D-3778	1	V-BELT, MOTOR TO DECK B-114	32	H-2239	4	RUE RING 1/2"
10	-----	1	SINGLE IDLER ASSEMBLY, SEE PG.1-5	33	P-10947	1	DECAL, "GREASE SPINDLE"
11	-----	1	SPINDLE ASSEMBLY, SEE PG. 1-4	34	P-10122	1	DECAL, "MISSING CHUTE"
12	-----	1	DRIVE BELT IDLER, SEE PG. 1-5	35	P-10935	2	DECAL, "ROTATING..."
13	609-182P	2	REAR SCALPER BRACKET	36	629-229W	1	DUST BAFFLE WLDT, 52"
14	H-1948	5	ROLLER, 3-3/4 DIA. X 4-13/16	37	P-10941	2	DECAL, "MULTI PERIL"
15	609-183P	5	WHEEL BUSHING	38	P-11413	1	DECAL, "HOIST POINT"
16	F-1741	6	3/8-16 X 6" GR. 5	39	H-1932	4	SAFETY TREAD
17	F-1239	10	3/8 LOCKNUT	40	P-10937	1	DECAL, "WARNING"
18	F-1009-03	4	3/8 FLAT WASHER	41	F-1005-03	8	LOCKNUT, 3/8 STOVER
19	F-1558	4	3/8-16 X 7/8 GR. 5	42	F-1158	4	LOCKNUT, 1/4-20
20	F-1019-03	8	3/8" LOCKWASHER	43	F-1935	1	1/4-20 X 1 1/2" CARRIAGE BOLT
21	F-1672	8	CARRIAGE BOLT, 5/16 X 1-1/4	44	F-1823	1	1/4-20 X 3/4" CARRIAGE BOLT
22	F-1538	7	1/4-20 X 3/4 GR. 5	45	629-230P	1	AIR BAFFLE
23	F-1019-01	4	1/4" LOCKWASHER	46	649-035P	2	DECK HANDLE

60" DECK ASSEMBLY



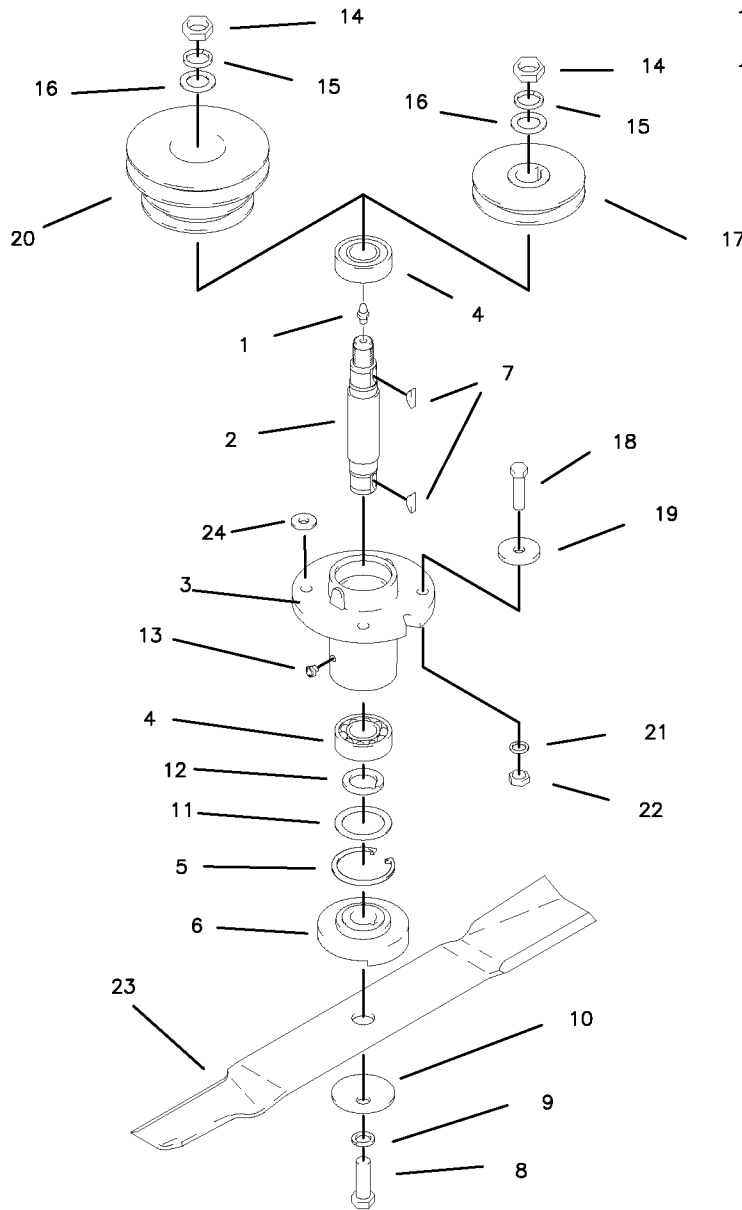
REF NO.	PART NO.	QTY.	DESCRIPTION	REF NO.	PART NO.	QTY.	DESCRIPTION
1	643-059A	1	60" DECK W/DECALS	24	F-1009-01	9	1/4" FLAT WASHER
2	643-037A	1	PULLEY COVER RH, W/DECAL	25	F-1671	6	CARRIAGE BOLT 5/16 X 3/4
3	643-038A	1	PULLEY COVER LH, W/DECAL	26	F-1009-02	8	5/16" FLAT WASHER
4	637-053W	1	OUTLET STIFFENER	27	F-1125	11	5/16-18 LOCKNUT
5	637-062A	1	60" DECK CHUTE W/DECAL	28	F-1015-15	5	5/16-18 X 1" GR. 5
6	643-016W	4	DECK HANGER	29	H-2240	2	PIN, 1/2" X 4-1/2"
7	609C-156P	1	PULLEY, 5-3/8DIA. 2 GROOVE	30	F-1816	2	PIN, 1/2" X 2-1/2"
8	D-3389	1	V-BELT (KEVLAR) A-112	31	F-1521	4	1/2" FLAT WASHER
9	D-3778	1	V-BELT, MOTOR TO DECK B-114	32	H-2239	4	RUE RING 1/2"
10	-----	1	SINGLE IDLER ASSEMBLY, SEE PG. 1-5	33	P-10947	1	DECAL, "GREASE SPINDLE"
11	-----	1	SPINDLE ASSEMBLY, SEE PG. 1-4	34	P-10122	1	DECAL, "MISSING CHUTE"
12	-----	1	DRIVE BELT IDLER, SEE PG. 1-5	35	P-10935	2	DECAL, "ROTATING..."
13	609-182P	2	REAR SCALPER BRACKET	36	643-047W	1	DUST BAFFLE WLDT. 60"
14	H-1948	6	ROLLER, 3-3/4 DIA. X 4-13/16	37	P-10941	2	DECAL, "MULTI PERIL"
15	609-183P	6	WHEEL BUSHING	38	P-11413	1	DECAL, "HOIST POINT"
16	F-1741	7	3/8-16 X 6" GR. 5	39	H-1932	4	SAFETY TREAD
17	F-1239	15	3/8 LOCKNUT	40	P-10937	1	DECAL, "WARNING"
18	F-1009-03	8	3/8 FLAT WASHER	41	F-1005-03	8	LOCKNUT, 3/8 STOVER
19	F-1558	8	3/8-16 X 7/8 GR. 5	42	F-1158	4	LOCKNUT, 1/4-20
20	F-1019-03	8	3/8" LOCKWASHER	43	F-1935	1	1/4-20 X 1 1/2" CARRIAGE BOLT
21	F-1672	8	CARRIAGE BOLT, 5/16 X 1-1/4	44	F-1823	1	1/4-20 X 3/4 CARRIAGE BOLT
22	F-1538	7	1/4-20 X 3/4 GR. 5	45	643-042P	1	AIR BAFFLE
23	F-1019-01	4	1/4" LOCKWASHER	46	649-035P	2	DECK HANDLE

72" DECK ASSEMBLY



REF NO.	PART NO.	QTY.	DESCRIPTION	REF NO.	PART NO.	QTY.	DESCRIPTION
1	643-069A	1	72" DECK W/DECALS	24	F-1009-01	5	1/4" FLAT WASHER
2	643-070A	2	PULLEY COVER, W/DECAL	25	F-1671	22	CARRIAGE BOLT 5/16 X 3/4
	P-10935	2	DECAL, "ROTATING..."	26	F-1009-02	6	5/16" FLAT WASHER
4	643-051W	1	OUTLET STIFFENER	27	F-1125	31	5/16-18 LOCKNUT
5	643-071A	1	72" DECK CHUTE W/DECAL	28	F-1015-15	5	5/16-18 X 1" GR. 5
6	643-016W	4	DECK HANGER	29	H-2240	2	PIN, 1/2" X 4-1/2"
7	643-067P	1	PULLEY, 6 1/4" DIA. 2 GROOVE	30	F-1816	2	PIN, 1/2" X 2-1/2"
8	D-3724	1	V-BELT (KEVLAR) AK-128	31	F-1521	4	1/2" FLAT WASHER
9	D-3778	1	V-BELT, MOTOR TO DECK, B-114	32	H-2239	4	RUE RING 1/2"
10	-----	1	SINGLE IDLER ASSEMBLY, SEE PG. 1-5	33	P-10947	1	DECAL, "GREASE SPINDLE"
11	-----	1	SPINDLE ASSEMBLY, SEE PG. 1-4	34	P-10122	1	DECAL, "MISSING CHUTE"
12	643-068P	1	TOP STIFFENER, 72"	35	F-1707	4	CARRIAGE BOLT, 5/16 X 2 1/4"
13	609-182P	1	REAR SCALPER BRACKET	36	643-042P	1	AIR BAFFLE
14	H-1948	6	ROLLER, 3-3/4 DIA. X 4-13/16	37	P-10941	2	DECAL, "MULTI PERIL"
15	609-183P	6	WHEEL BUSHING	38	P-11413	1	DECAL, "HOIST POINT"
16	F-1741	7	3/8-16 X 6" GR. 5	39	H-1932	4	SAFETY TREAD
17	F-1239	11	3/8 LOCKNUT	40	P-10937	1	DECAL, "WARNING"
18	F-1009-03	4	3/8 FLAT WASHER	41	F-1005-03	8	LOCKNUT, 3/8 STOVER
19	F-1558	4	3/8-16 X 7/8 GR. 5	42	F-1158	4	LOCKNUT, 1/4-20
20	F-1019-03	8	3/8" LOCKWASHER	43	F-1935	1	1/4-20 X 1 1/2" CARRIAGE BOLT
21	F-1672	8	CARRIAGE BOLT, 5/16 X 1-1/4	44	F-1823	1	1/4-20 X 3/4 CARRIAGE BOLT
22	F-1538	3	1/4-20 X 3/4 GR. 5	45	H-2461	8	RUBBER BUMPER
23	H-1798	2	GALVANIZED CAP	46	649-035P	2	DECK HANDLE

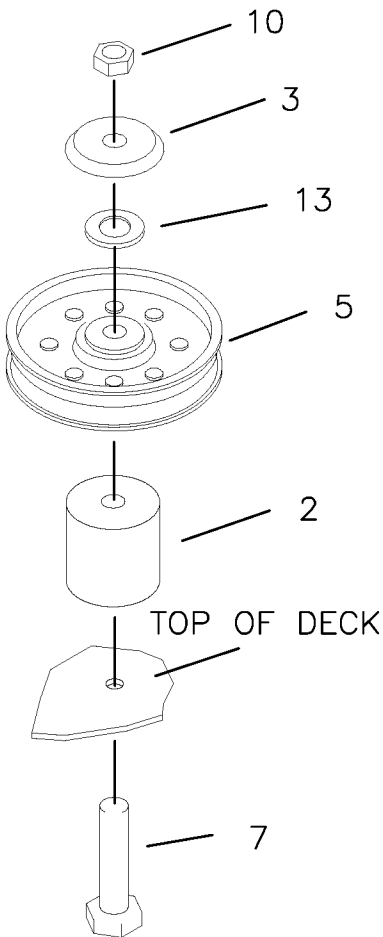
DECK SPINDLE ASSEMBLY



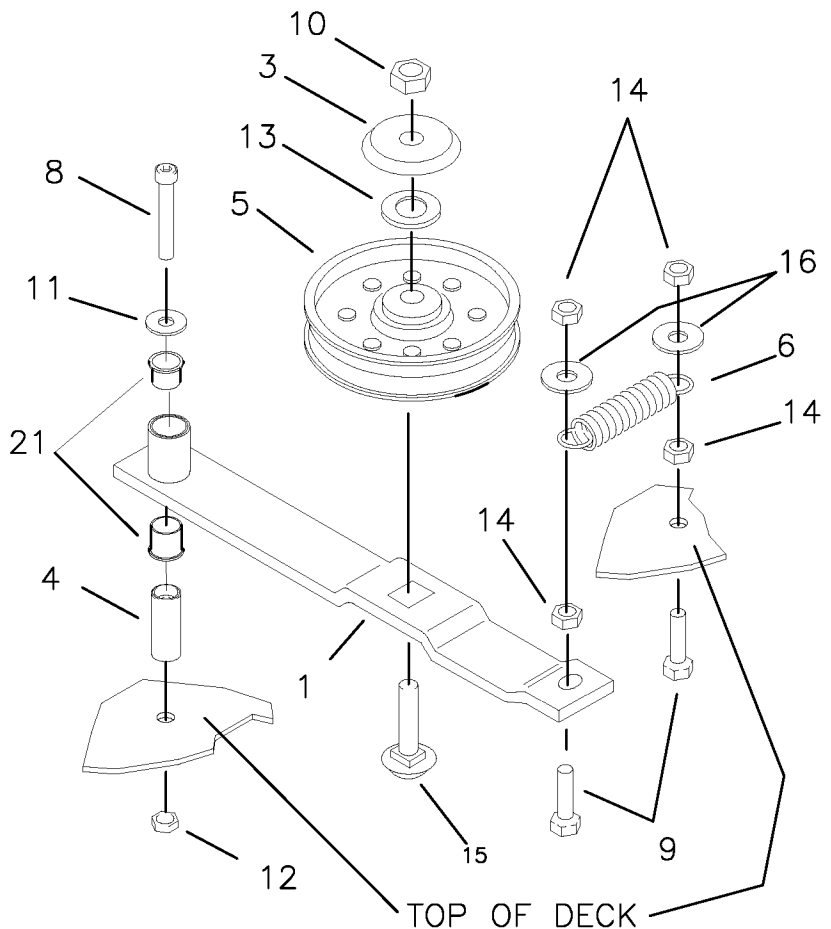
REF NO.	PART NO.	QTY.	DESCRIPTION	REF NO.	PART NO.	QTY.	DESCRIPTION
-	609F-019A	-	SPINDLE ASSEMBLY, W/WASHERS	16	F-1510	1	3/4" WASHER, FLAT STD.
-	660-045A	-	SPINDLE ASSEMBLY, SR-1200	17	609-155P	-	PULLEY, 1 GROOVE 4"
1	H-1056	1	GREASE FITTING	18	F-1572	4	3/8-24 X 1-1/2" HHCS GR. 5
2	609-162P	1	SPINDLE SHAFT	19	609-034P	4	SPINDLE SPACER REINFORCEMENT
3	609-223P	1	SPINDLE HOUSING	20	609D-156P	1	PULLEY, 2 GROOVE 52"
4	D-3058	2	BEARING, #6205-2RS	-	609C-156P	-	PULLEY, 2 GROOVE 60"
5	H-1893	1	SNAP RING INT. 52MM	-	643-067P	-	PULLEY, 2 GROOVE 72"
6	609-152P	1	BLADE SPACER	21	F-1019-03	4	3/8" LOCK WASHER
7	D-1004-02	2	KEY, WOODRUF, 1/4 X 3/4	22	F-1573	4	3/8-24 LOCKNUT, M-F
8	F-1526	1	1/2-13 X 1-1/2" HHCS GR. 5	23	H-2499	1	FUSION BLADE, HIGH L, CUT 52"
9	F-1464	1	1/2" LOCK WASHER	-	H-2500	-	FUSION BLADE, HIGH L, CUT 60"
10	F-1507	1	WASHER, 1/2" CUPPED	-	H-2501	-	FUSION BLADE, HIGH L, CUT 72"
11	609-151P	1	WASHER, SEAL				OPTIONAL BLADES
12	609-073P	1	ARBOR SPACER		H-2387	-	BLADE, LOW L, 18-3/8" CUT 52"
13	H-2066	1	GREASE VENT 5 LBS.		H-1667	-	BLADE, LOW L, 21" CUT 60"
14	F-1461	1	3/4-16 NUT, HEX JAM		H-2397	-	BLADE, LOW L, 25" CUT 72"
15	F-1463	1	3/4" LOCK WASHER	24	*629-237P	2	WASHER, .406 ID X 1"

*NOT USED ON ALL MOWERS

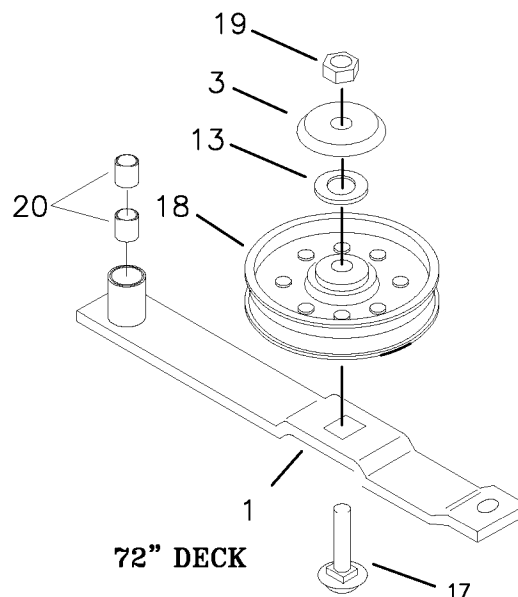
DRIVE BELT IDLER & RELATED PARTS (NOT ON 72" DECK)



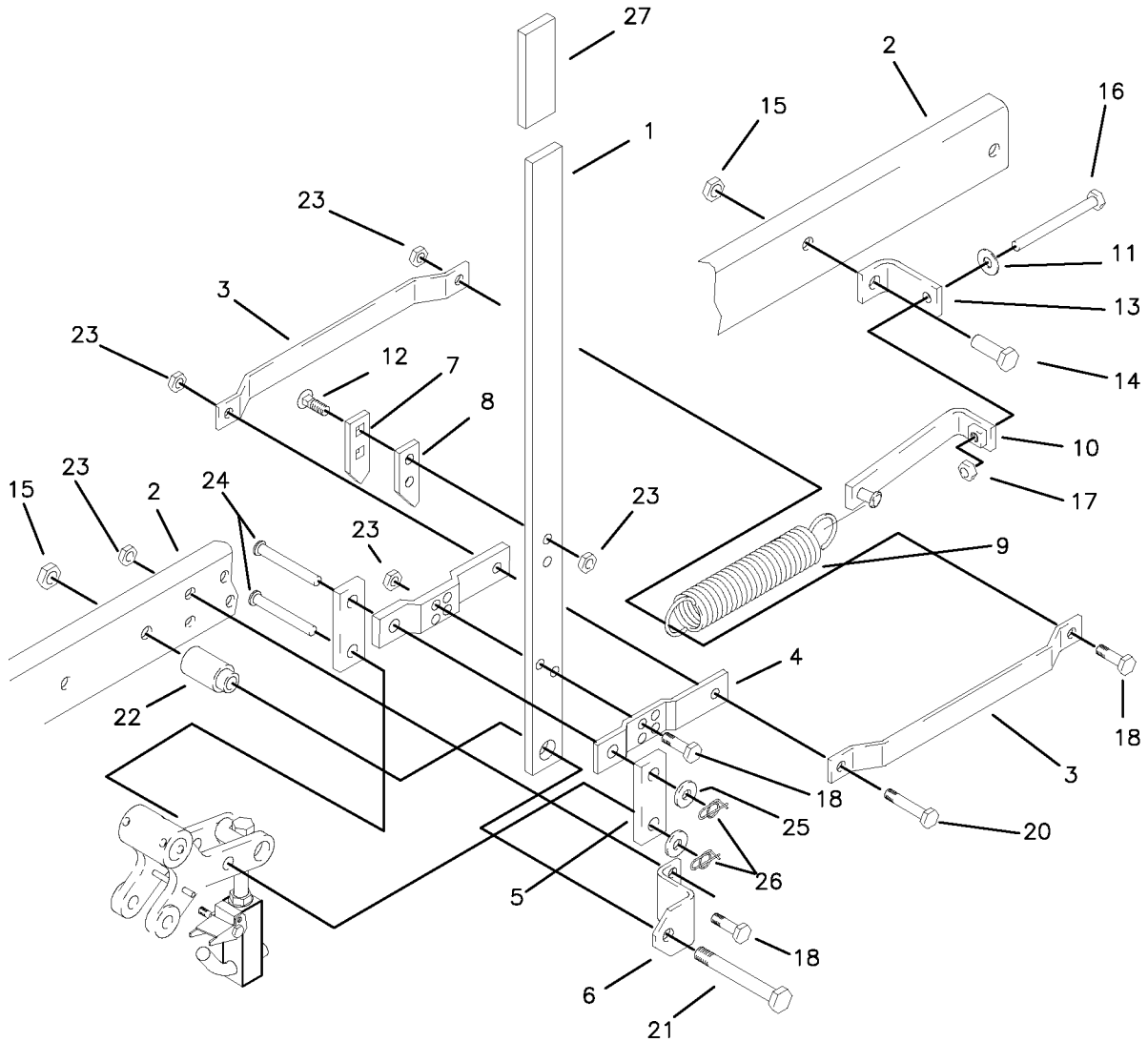
SINGLE IDLER ASSEMBLY & RELATED PARTS 52", 60" DECK



REF NO.	PART NO.	QTY.	DESCRIPTION
1	643-007W	1	SINGLE IDLER
2	643-010P	1	PULLEY SPACER
3	620-201P	1	BEARING CAP
4	621-103P	1	PIN
5	D-3338	2	PULLEY, FLAT IDLER
6	H-2092	1	SPRING, 1-1/2" X 5"
7	F-1779	1	1/2-13 X 4" GR. 5
8	F-1800	1	5/16-18 SHCS X 2-1/4"
9	F-1574	2	3/8-24 X 1-1/4" GR. 5
10	F-1378	2	1/2-13 LOCKNUT
11	F-1009-02	1	5/16 FLAT WASHER
12	F-1125	1	5/16 LOCK NUT
13	F-1521	2	1/2" FLAT WASHER
14	F-1573	3	3/8" LOCK NUT
15	F-1822	1	CARRIAGE BOLT, 1/2 X 2 1/4"
16	609-034P	2	REINFORCEMENT WASHER
17	F-1965	1	1/2 X 1-1/2" CARRIAGE BOLT
18	D-3617	1	PULLEY, FLAT IDLER W/1" BUSHING
19	D-1966	1	1/2-13 THIN NYLOC NUT
20	D-3573	2	DXF BUSHING
21	D-3730	2	5/8 BUSHING, SR-1200

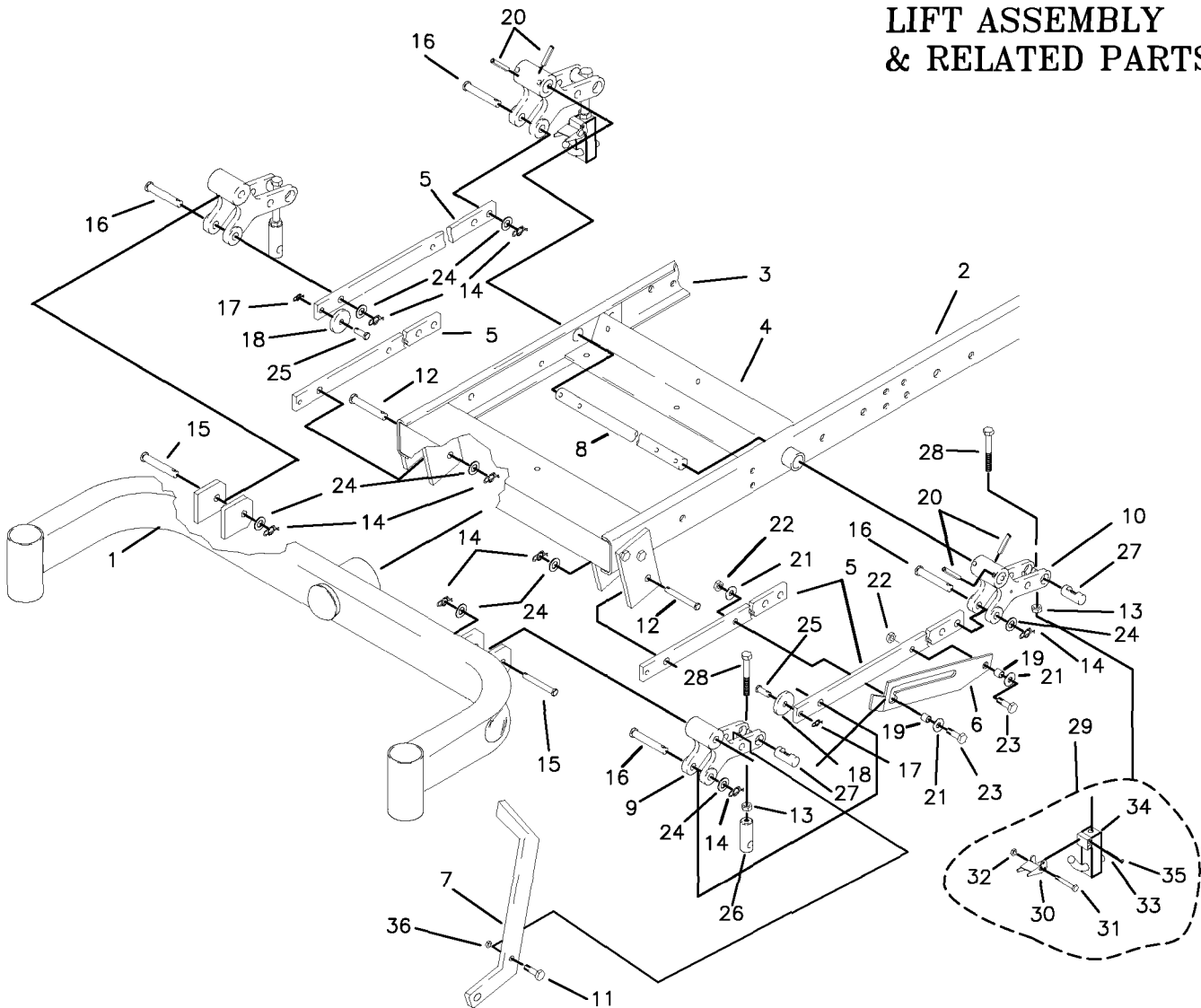


LIFT HANDLE ASSEMBLY & RELATED PARTS



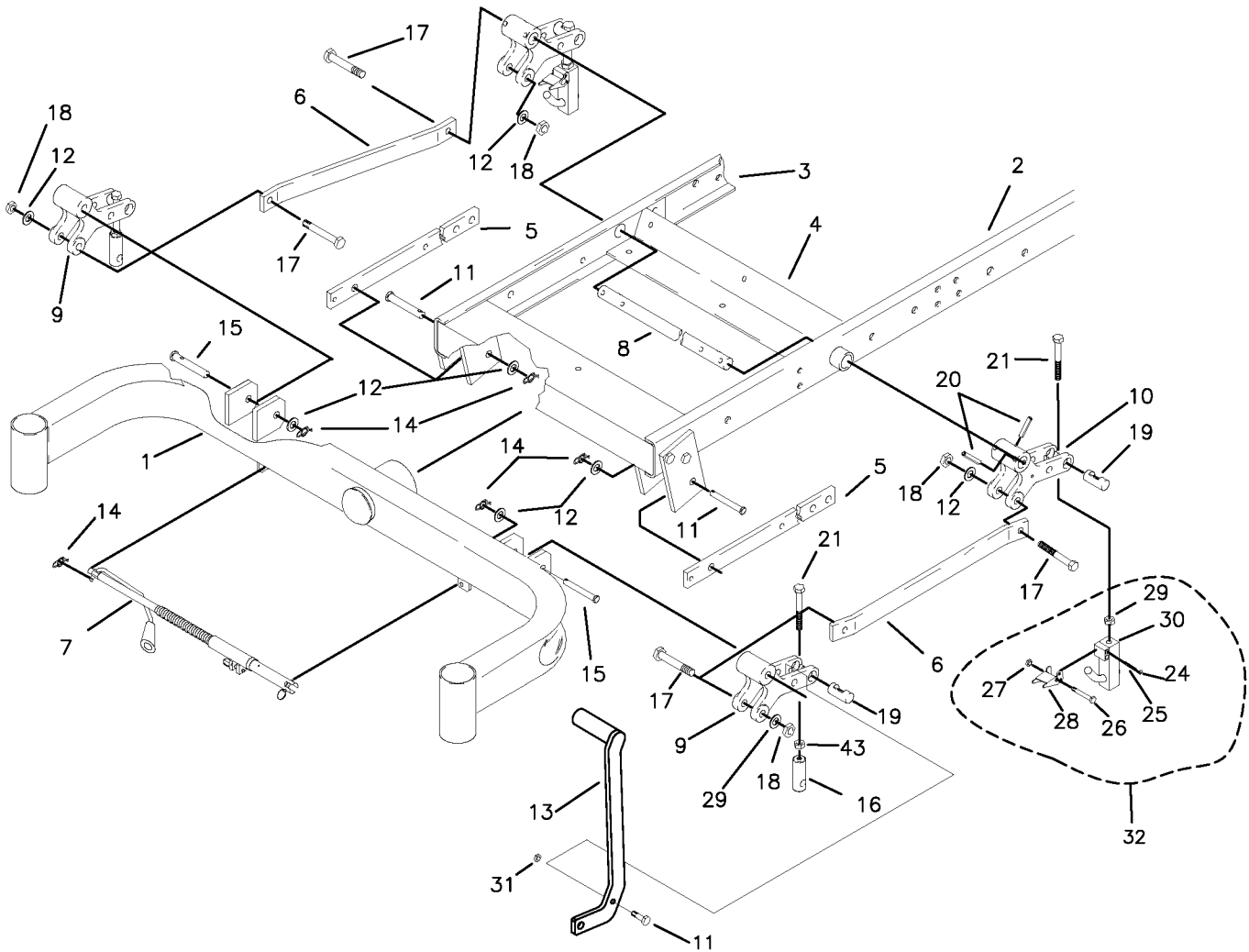
REF NO.	PART NO.	QTY.	DESCRIPTION	REF NO.	PART NO.	QTY.	DESCRIPTION
1	642-062P	1	LIFT HANDLE	14	F-1526	1	3/8-16 X 1-1/2" GR. 5
2	642-040W	1	FRAME WELDMENT, LH.	15	F-1005-05	2	NUT, 1/2-13 LOCKNUT
3	642-055P	2	SPRING EXTENSION	16	F-1646	1	3/8-16 X 5" FULL THREAD
4	642-060P	2	SPRING ANCHOR PLATE	17	F-1011-03	1	HEX NUT, 3/8-16 UNC-2B
5	642-061P	2	HANDLE LINK	18	F-1307	3	3/8-16 X 1-1/4" GR. 5
6	642-041P	1	HANDLE PIVOT BRACKET	19	F-1073	3	3/8-16 X 2" GR. 5
7	642-127P	1	TOP PEG LATCH PLATE	20	F-1015-30	1	3/8-16 X 2 1/2" GR. 5
8	642-126P	1	TOP PEG SPACER PLATE	21	F-1828	1	1/2-13 X 3-1/2" GR. 5
9	H-1610	1	SPRING, 1-1/2" OD. X 8"	22	642-095P	1	HANDLE PIVOT PIN
	H-1868	1	SPRING, HEAVY 8" (72" DECK)	23	F-1005-03	7	NUT, 3/8-16 LOCKNUT (STOVER)
10	620-227W	1	SPRING TIGHTENER WLDT.	24	F-1889	2	CLEVIS PIN, 1/2 X 2-5/8"
11	F-1009-03	1	FLAT WASHER, 3/8"	25	F-1521	2	1/2" FLAT WASHER
12	F-1672	2	3/8-16 X 1-1/4" CARRIAGE BOLT	26	H-2239	2	RUE RING, 1/2"
13	642-071W	1	SPRING ANCHOR WELDMENT	27	H-2324	1	VINYL GRIP, 3/8 X 1-1/2"

LIFT ASSEMBLY & RELATED PARTS



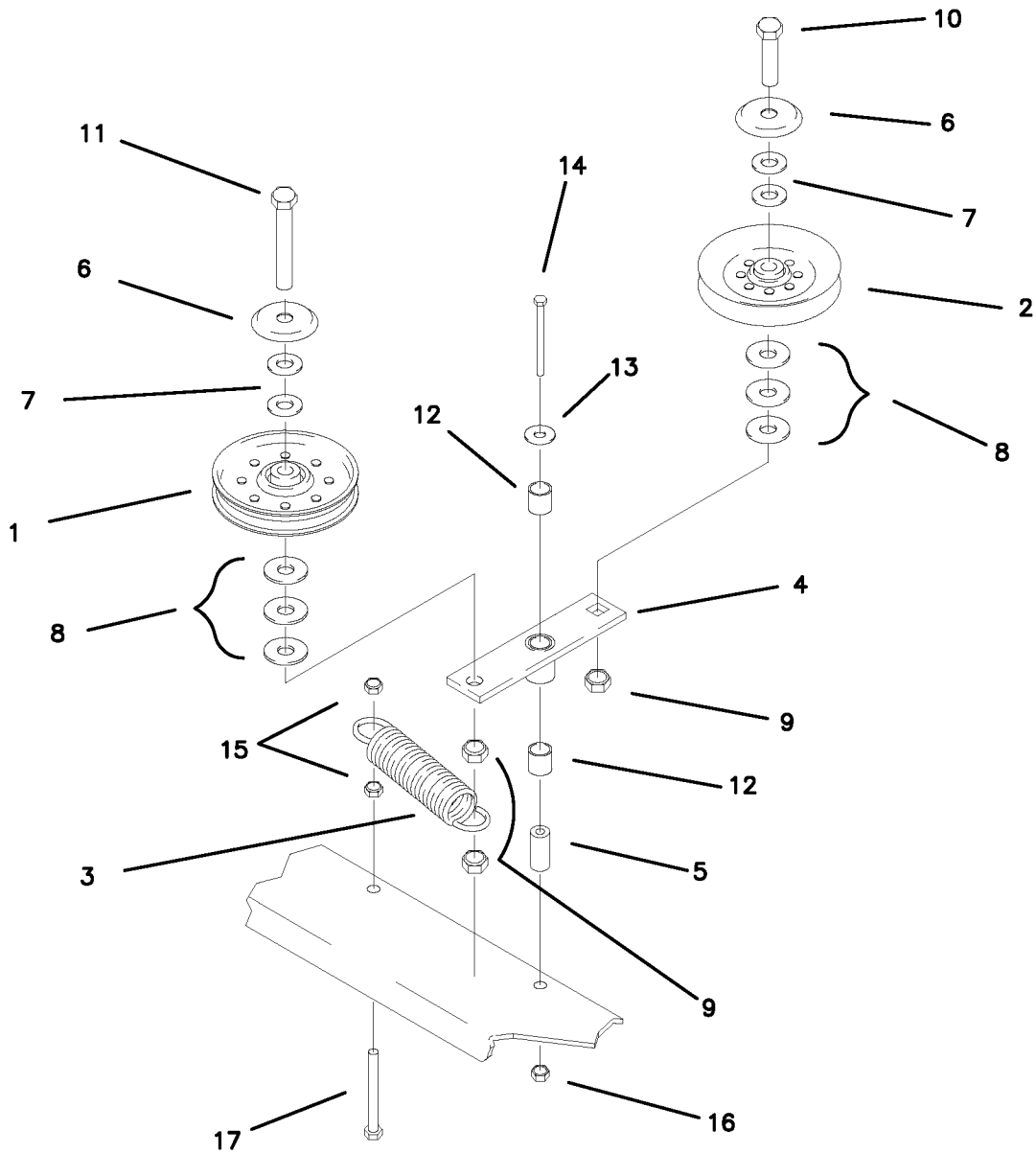
REF NO.	PART NO.	QTY.	DESCRIPTION	REF NO.	PART NO.	QTY.	DESCRIPTION
1	642-021W	1	FRONT AXLE WELDMENT	19	642-069P	2	SPACER, TOP PEG
2	642-040W	1	FRAME WELDMENT, LH	20	F-1036-37	4	ROLL PIN, 5/16 DIA. X 1.750
3	642-039W	1	FRAME WELDMENT, RH	21	F-1009-02	2	FLAT WASHER, 5/16"
4	642-019W	1	FRONT PIVOT CHANNEL	22	F-1573	2	LOCK NUT 3/8-24
5	642-059P	4	LINK BAR	23	F-1572	2	3/8-24 X 1-1/2 HH GR. 5
6	642-100P	1	DECK LATCH (FLIP UP)	24	F-1521	8	WASHER, 1/2 NARROW
7	659-056P	1	DECK LIFT PEDAL	25	F-1691	2	CLEVIS PIN, 3/8 X 1"
8	620-051P	1	LIFT BAR	26	642-175P	2	ADJUSTABLE HANGER END
9	642-081P	2	LIFT SLEEVE, FRONT	27	642-177P	4	HANGER PIN
10	642-082P	2	LIFT SLEEVE, REAR	28	F-1936	4	1/2-13 X 3-1/2, 2" THREAD
11	F-1879	1	5/16-18 X 1 1/4", GR.5	29	642-183A	2	REAR DECK HANGER ASSEMBLY
12	F-1896	2	CLEVIS PIN, 1/2 X 1-3/4"	30	642-178P	1	LATCH
13	F-1489	4	NUT. 1/2" JAM	31	F-1716	1	1/4 X 1-1/2" , G.5
14	H-2239	8	RUE RING, 1/2"	32	F-1158	1	NUT. 1/4" STOVER
15	F-1890	2	CLEVIS PIN, 1/2 X 3-1/2"	33	H-2390	1	SPRING, .219 OD X .024 WIRE
16	F-1898	4	CLEVIS PIN, 1/2 X 2-3/4"	34	642-176W	1	REAR DECK HANGER WLDT
17	F-1492	2	RUE RING, 5/16-3/8 PIN	35	D-3723	1	1/4" CHROME STEEL BALL
18	642-105P	2	ROLLER	36	F-1125	1	5/16 LOCKNUT

LIFT ASSEMBLY & RELATED PARTS WIDE FRONT END



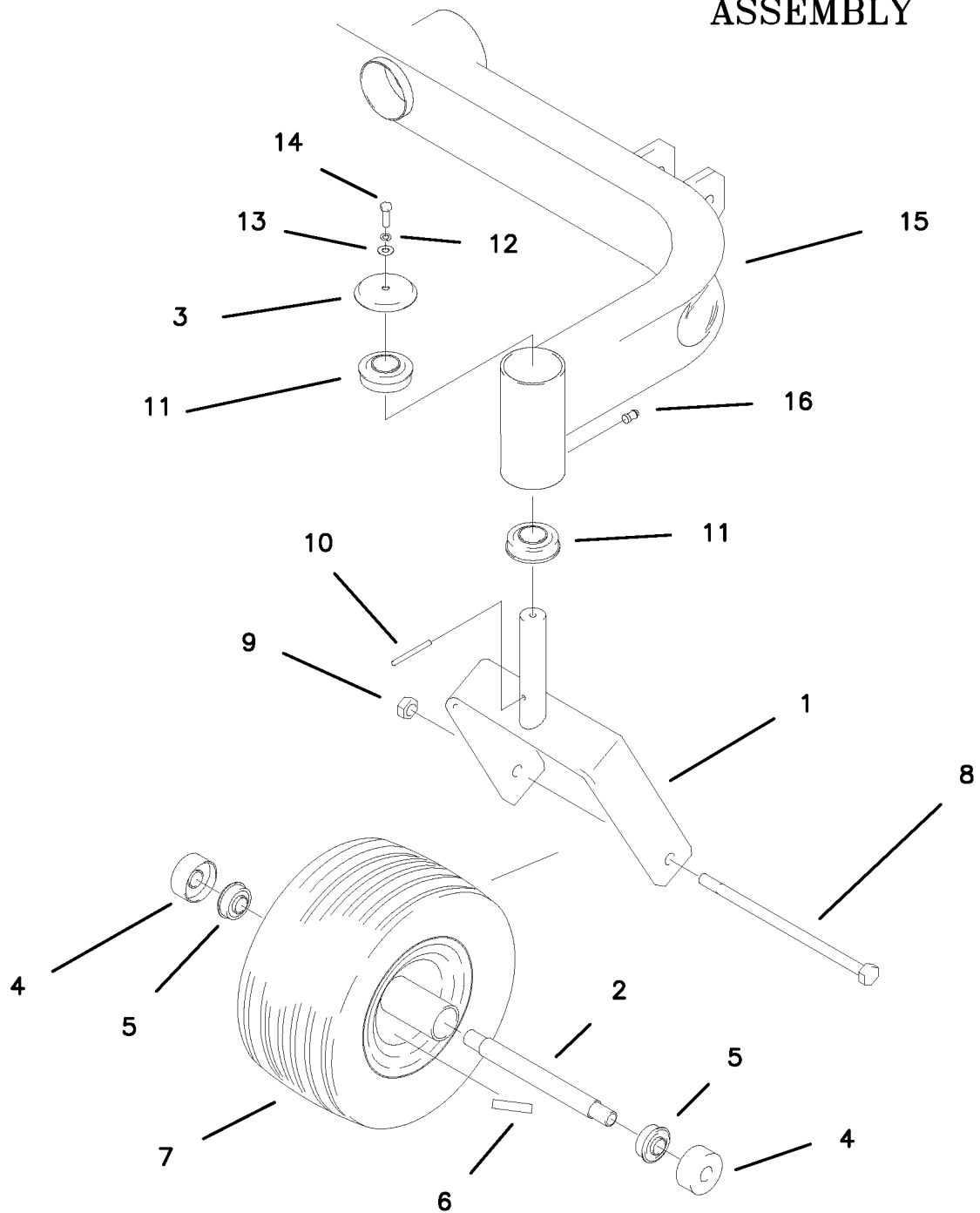
REF NO.	PART NO.	QTY.	DESCRIPTION	REF NO.	PART NO.	QTY.	DESCRIPTION
1	642-180W	1	WIDE FRONT AXLE WELDMENT	18	F-1005-05	2	NUT, 1/2" STOVER
2	642-040W	1	FRAME WELDMENT, LH	19	642-177P	2	HANGER PIN
3	642-039W	1	FRAME WELDMENT, RH	20	F-1036-37	4	ROLL PIN, 5/16 DIA. X 1.750
4	642-019W	1	FRONT PIVOT CHANNEL	21	F-1936	4	1/2-13 X 3-1/2, 2" THREAD
5	642-059P	2	LINK BAR	22	F-1573	2	LOCK NUT 3/8-24
6	647-071P	2	OFFSET LINK BAR	23	F-1572	2	3/8-24 X 1-1/2 HH GR. 5
7	629-260A	1	SEE PAGE 3-14	24	D-3723	2	1/4" CHROME STEEL BALL
8	620-051P	1	LIFT BAR	25	H-2390	2	SPRING, .219 OD X .024 WIRE
9	642-081P	2	LIFT SLEEVE, FRONT	26	F-1716	2	1/4 X 1-1/2" , G.5
10	642-082P	2	LIFT SLEEVE, REAR	27	F-1158	2	NUT. 1/4" STOVER
11	F-1896	2	CLEVIS PIN, 1/2 X 1-3/4"	28	642-178P	2	LATCH
12	F-1521	8	WASHER, 1/2 NARROW	29	F-1489	4	NUT. 1/2" JAM
13	629-249W	1	OFFSET DECK LIFT PEDAL	30	642-176W	2	REAR DECK HANGER
14	H-2239	4	RUE RING, 1/2"	31	F-1125	1	5/16" LOCKNUT
15	F-1890	2	CLEVIS PIN, 1/2 X 3-1/2"	32	642-183A	2	REAR DECK HANGER ASSEMBLY
16	642-175P	2	ADJUSTABLE HANGER END	33	F-1879	1	5/16-18 X 1-1/4", GR.5
17	F-1439	2	1/2-13 X 3", GR.5				

DOUBLE IDLER & RELATED PARTS



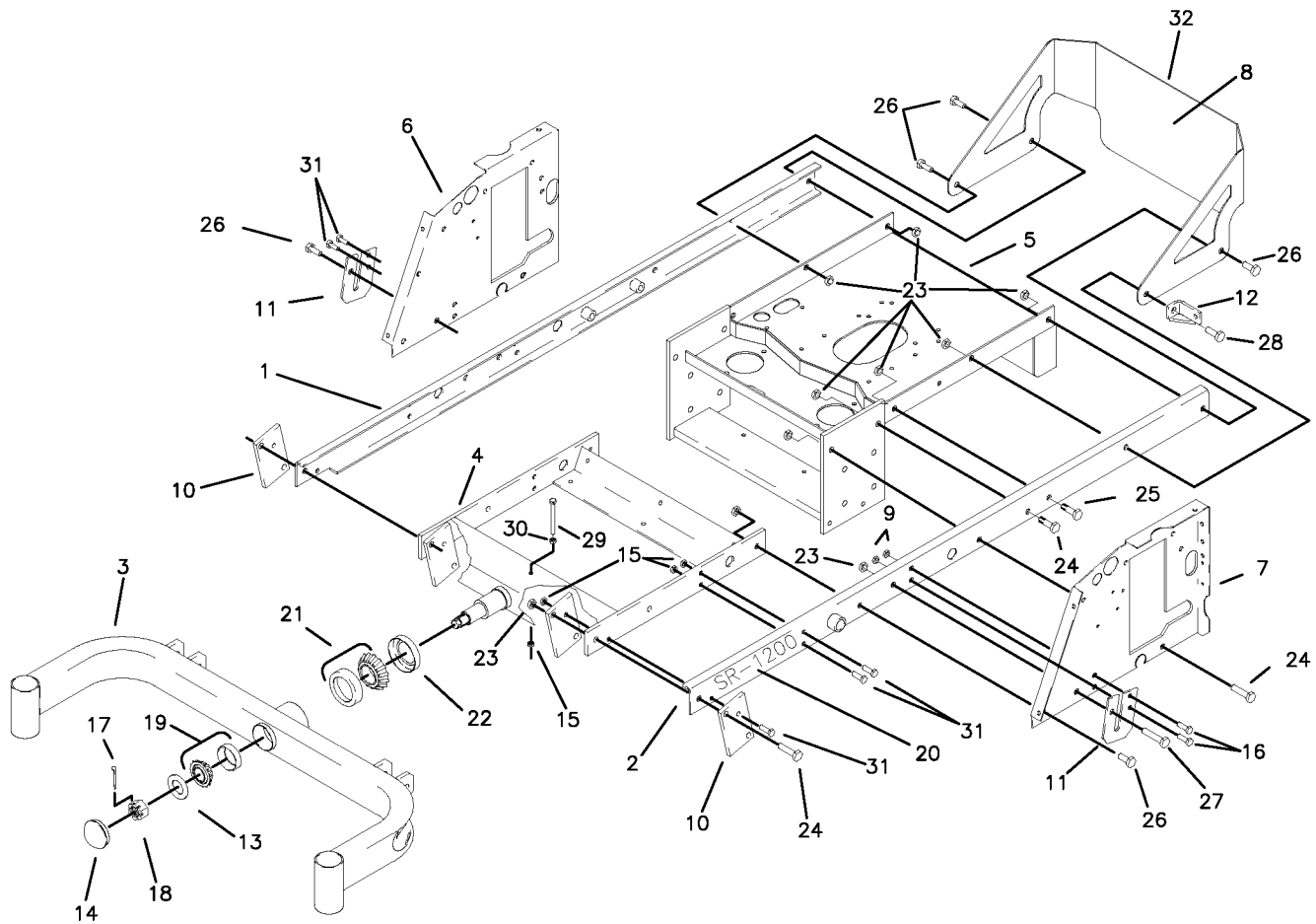
REF NO.	PART NO.	QTY.	DESCRIPTION	REF NO.	PART NO.	QTY.	DESCRIPTION
1	D-3617	1	FLAT IDLER PULLEY	10	F-1293	1	1/2-13 X 2" GR. 5
2	D-3337	1	V-IDLER PULLEY	11	F-1668	1	1/2-13 X 2-3/4" GR. 5
3	H-2092	1	SPRING	12	D-3573	2	BUSHING DX 5/8 X 3/4
4	636-086W	1	IDLER ARM	13	F-1009-02	1	5/16 FLAT WASHER
5	621-103P	1	PIN	14	F-1820	1	5/16-18 X 2-1/4" GR. 5
6	620-201P	2	BEARING CAP	15	F-1573	2	3/8-24 LOCK NUT
7	F-1521	4	1/2" FLAT WASHER, (NARROW)	16	F-1125	1	5/16 LOCK NUT
8	F-1009-05	6	1/2" FLAT WASHER, (STANDARD)	17	F-1574	1	3/8-24 X 1 1/4" GR. 5
9	F-1005-05	3	1/2" LOCK NUT				

CASTER WHEEL ASSEMBLY



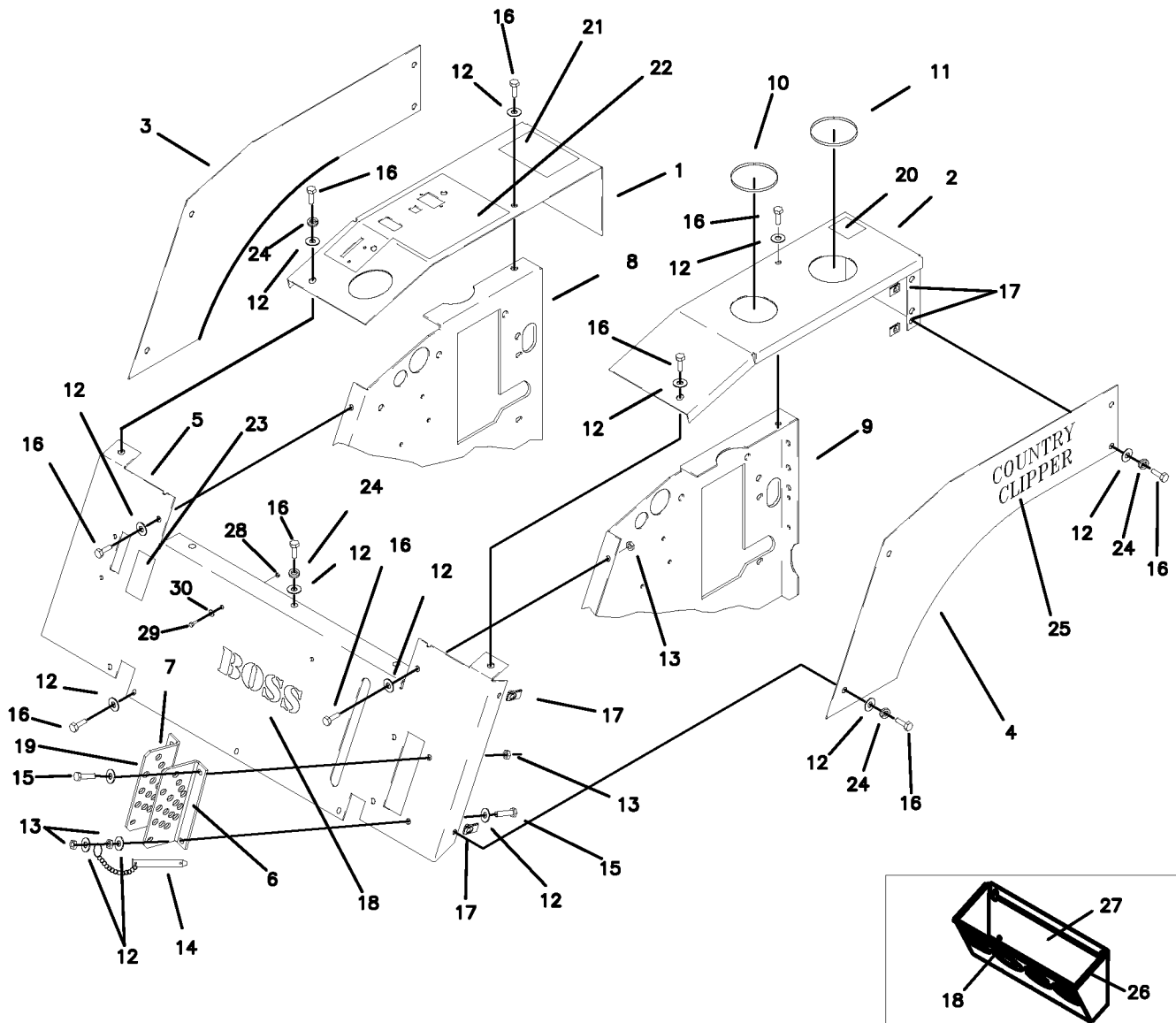
REF NO.	PART NO.	QTY.	DESCRIPTION	REF NO.	PART NO.	QTY.	DESCRIPTION
1	647-003W	1	CASTER YOKE	9	F-1966	2	1/2-13 THIN NYLOCK NUT
2	647-038P	2	BEARING SPACER	10	F-1456	2	3/16 ROLL PIN
3	609-099P	2	BEARING CAP	11	D-2008-02	4	BEARING, SPD SF-16-32
4	611-135P	4	BEARING SHIELD	12	F-1009-01	2	1/4" FLAT WASHER
5	D-3432	4	BEARING, 5/8 ID X 1-3/8 OD	13	F-1019-01	2	1/4" LOCK WASHER
6	P-11384	2	DECAL, 12, PSI	14	F-1810	2	1/4-20 X 3/4 W/NYLON PATCH
7	D-3670	2	TIRE, 13 X 650-6 (RIBBED)	15	-----	1	SEE PAGE 1-7 OR 1-8
8	F-1908	2	1/2-13 X 9" GR. 8 BOLT	16	H-1056	2	GREASE ZERK

FRAME SIDES & RELATED PARTS



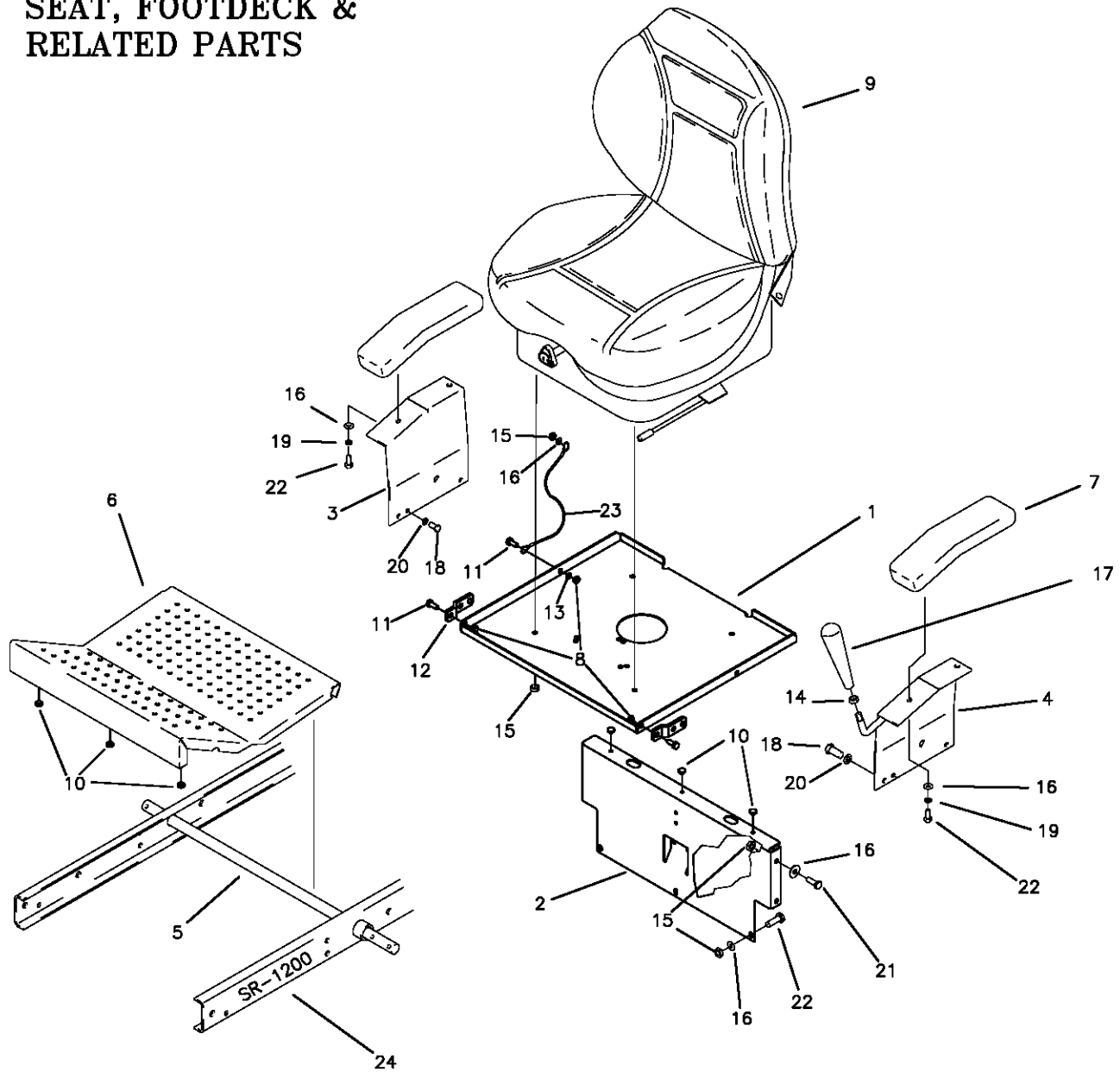
REF NO.	PART NO.	QTY.	DESCRIPTION	REF NO.	PART NO.	QTY.	DESCRIPTION
	642-039W	1	FRAME SIDE RH.	17	F-1728	1	3/16 X 2" COTTER PIN
2	642-040W	1	FRAME SIDE LH.	18	F-1724	1	1"-14 CASTLE NUT
3	642-021W	1	FRONT AXLE	19	D-3782	1	TAPERED BEARING SET
	642-180W	1	FRONT AXLE (WIDE)	20	P-12085	2	DECAL, SR-1200
4	642-019W	1	FRONT PIVOT CHANNEL	21	D-3646	1	TAPERED ROLLER BRG.
5	647-005W	1	MOTOR MOUNT WLDT.	22	D-3647	1	SEAL, #19992
6	642-049P	1	SIDE PANEL RH.	23	F-1005-05	14	1/2" LOCK NUT
7	642-050P	1	SIDE PANEL LH.	24	F-1293	6	1/2-13 X 2" GR. 5
8	647-098A	1	ENGINE GUARD W/DECAL	25	F-1759	2	1/2-13 X 1" GR.5
9	F-1005-03	2	3/8-16 STOVER NUT	26	F-1386	4	1/2-13 X 1-1/4" GR. 5
10	642-063P	4	DRAG BAR TAB	27	F-1828	1	1/2-13 X 3-1/2" GR. 5
11	642-042P	2	BRAKE ROD MOUNT	28	F-1526	1	1/2-13 X 1-1/2" GR. 5
12	642-071W	1	SPRING ANCHOR	29	F-1073	1	3/8-16 X 2" GR. 5
13	606-303P	1	1" WASHER	30	F-1011-03	1	3/8-16 NUT, UNC-2B
14	620-206P	1	GREASE CAP	31	F-1558	10	3/8-16 X 7/8" GR. 5
15	F-1239	11	3/8-16 LOCK NUT	32	P-11112	1	COUNTRY CLIPPER, DECAL
16	F-1307	2	3/8-16 X 1-1/4", GR.5				

FENDER ASSEMBLY



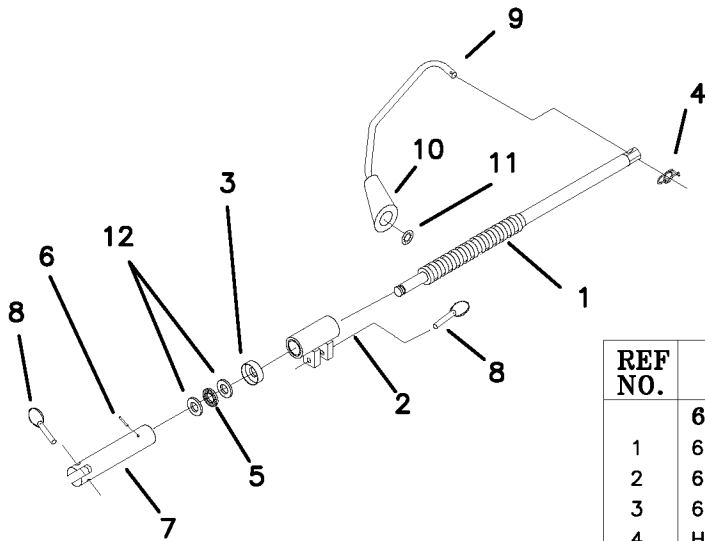
REF NO.	PART NO.	QTY.	DESCRIPTION	REF NO.	PART NO.	QTY.	DESCRIPTION
1	642-133A	1	FENDER CAP RH W/DECAL	15	F-1879	3	5/16-18 X 1-1/4" GR. 5
-	642-140A	-	FDR. CAP RH. 2 LEV. W/DECAL	16	F-1015-15	21	5/16-18 X 1" GR.5
2	642-170A	1	FENDER CAP LH. W/DECAL	17	F-1860	8	5/16 U-NUT
-	642-171A	-	FDR. CAP LH. 2 LEV. W/DECAL	18	P-12016	1	DECAL, THE BOSS
3	642-134A	1	FENDER SKIRT RH W/DECAL	19	P-12034	1	DECAL, "1/4 CUT HEIGHT"
4	642-135A	1	FENDER SKIRT LH W/DECAL	20	P-10939	1	DECAL, "CAUTION"
5	647-116A	1	FRONT PANEL ASS'Y. W/DECAL	21	P-11370	1	DECAL, "WARNING"
-	647-117A	1	FRONT PANEL ASS'Y. SR-1200	22	P-11369	1	DECAL, RH. FENDER CAP
6	647-095P	1	LATCH PLATE LH.	23	P-11382	1	DECAL, PARK BRAKE
7	647-097A	1	LATCH PLATE, RH, W/DECAL	24	F-1019-02	15	5/16 LOCK WASHER
8	642-049P	1	SIDE PANEL RH.	25	P-11112	2	DECAL, "COUNTRY CLIPPER"
9	642-050P	1	SIDE PANEL LH.	26	647-114P	1	TRIM, TOOL TRAY
10	644-029P	1	TRIM, FUEL TANK	27	647-115A	1	TOOL TRAY ASSEMBLY, SR-1200
11	644-030P	1	TRIM, OIL TANK	28	F-1158	2	1/4-20 STOVER NUT
12	F-1009-02	27	5/16 FLAT WASHER	29	F-1015-02	2	1/4-20 X 5/8" BOLT
13	F-1125	16	5/16-18 LOCK NUT	30	H-1989	2	SHOULDER WASHER
14	F-1807	1	1/2" X 2.4 CLEVIS PIN W/SASH				

SEAT, FOOTDECK & RELATED PARTS



REF NO.	PART NO.	QTY.	DESCRIPTION	REF NO.	PART NO.	QTY.	DESCRIPTION
1	647-087P	1	SEAT BRACKET	12	647-086P	2	SEAT MTG TAB
2	647-088P	1	REAR BRACE	13	F-1009-03	2	3/8 FLAT WASHER
3	647-047P	1	ARM REST RH. (JOYSTICK)	14	F-1011-03	1	3/8-16 PLAIN NUT
-	636-163P	1	ARM REST, (TWIN STICK)	15	F-1005-02	12	5/16-18 LOCK NUT
4	647-049W	1	ARM REST LH. (JOYSTICK)	16	F-1009-02	12	5/16 FLAT WASHER
-	636-163P	1	ARM REST, (TWIN STICK)	17	H-2317	1	TAPERED GRIP BALL
5	620-051P	1	LIFT BAR	18	F-1755	4	3/8-16 X 1/2" GR. 5
6	642-044P	1	FOOT DECK	19	F-1019-02	4	5/16 LOCK WASHER
7	621-143A	2	ARM REST PAD	20	F-1019-03	4	3/8 LOCK WASHER
8	F-1005-03	4	3/8-16 STOVER NUT	21	F-1546	4	5/16-18 X 3/4" GR. 5
9	H-2274	1	DELUXE SEAT	22	F-1015-15	8	5/16-18 X 1" GR. 5
-	H-2229	-	STANDARD SEAT	23	H-2460	1	CABLE
10	H-2512	6	RUBBER BUMPER	24	P-12090	2	SR-1200, DECAL
11	F-1015-23	3	3/8-16 X 3/4" GR. 5				

DECK FLIP/TIRE JACK ASSEMBLY (629-260A) (STANDARD ON THE BOSS 72")



NOTE:

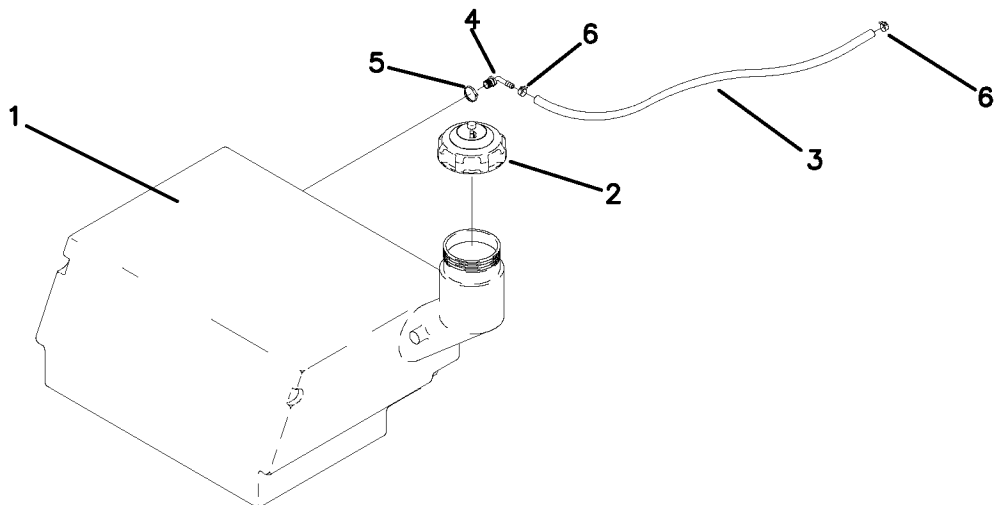
(1) LIGHTLY GREASE BEARING, THRUST WASHERS, AND BORE ON LOWER JACK CONNECTOR PRIOR TO ASSEMBLY.

(2) ROLL PIN, F-1456, MUST FIT INTO GROOVE ON JACK SCREW WELDMENT

REF NO.	PART NO.	QTY.	DESCRIPTION
	629-260A	1	DECK FLIP/TIRE JACK
1	629-217W	1	JACK SCREW WELDMENT
2	629-212W	1	JACK LIFT COLLAR WLDT.
3	629-210P	1	BEARING CAP
4	H-2239	1	RUE RING
5	D-3675	1	THRUST BEARING
6	F-1458	1	ROLL PIN, 1/8" X 3/4
7	629-208P	1	LOWER JACK CONNECTOR
8	F-1914	2	QUICK PIN, 1/4" X 1 3/8
9	629-216P	1	CRANK HANDLE
10	H-2343	1	NOB
11	F-1913	1	PUSH RETAINER
12	D-3676	2	THRUST WASHER

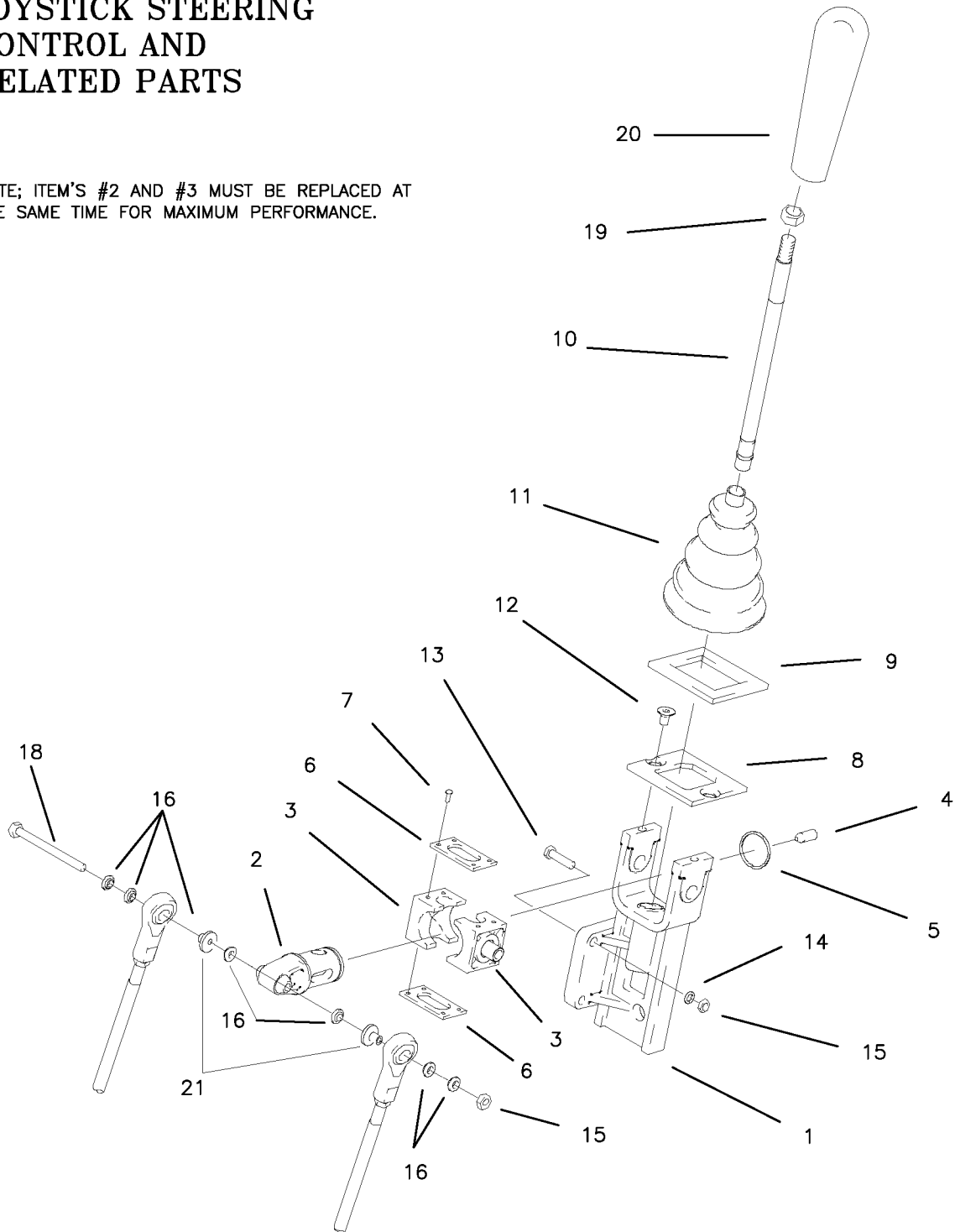
FUEL TANK ASSEMBLY

REF NO.	PART NO.	QTY.	DESCRIPTION
1	H-2234	1	11 GALLON TANK
2	H-2232	1	GAS CAP
3	644-034P	1	29-1/2" FUEL LINE
4	H-1646	1	HOSE BARB, 90 DEG.
5	H-1952	1	HOSE CLAMP
6	H-1687	2	HOSE CLAMP, 1/2"
7	647-063P	1	46" LONG 1/4" ID FUEL LINE



JOYSTICK STEERING CONTROL AND RELATED PARTS

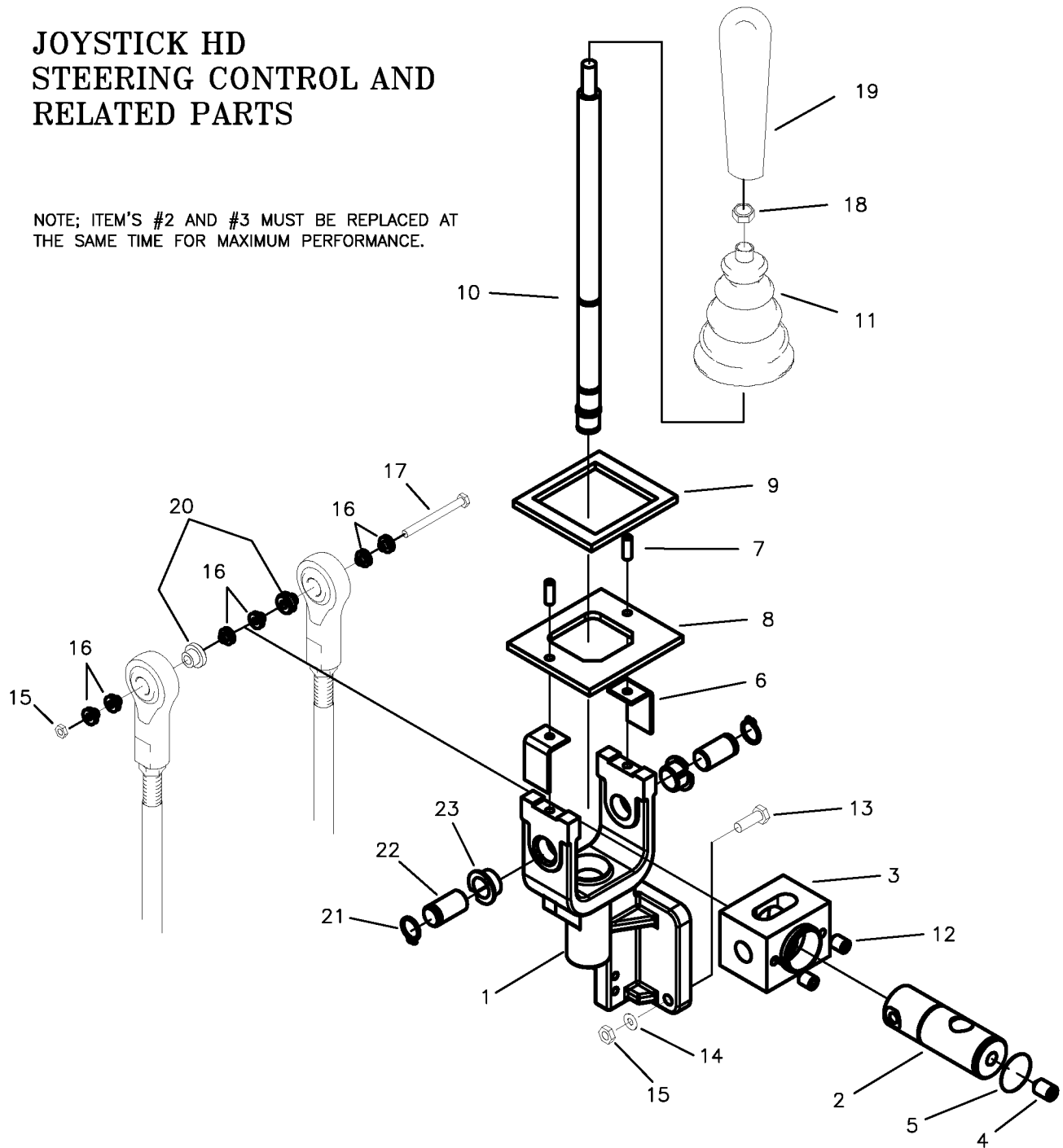
NOTE; ITEM'S #2 AND #3 MUST BE REPLACED AT THE SAME TIME FOR MAXIMUM PERFORMANCE.



REF NO.	PART NO.	QTY.	DESCRIPTION	REF NO.	PART NO.	QTY.	DESCRIPTION
-	636-141A	1	JOYSTICK ASSEMBLY	11	647-111A	1	BOOT, BELLOWS
1	621-124P	1	JOYSTICK YOKE	12	F-1714	2	1/4-20 X 1/2" FHCS GR. 5
2	H-1992	1	PIVOT SHAFT	13	F-1015-05	3	1/4-20 X 1" HHCS GR. 5
3	H-1993	2	PIVOT BLOCK	14	F-1019-01	3	1/4" LOCK WASHER
4	F-1120	1	BALL PLUNGER	15	F-1158	4	1/4-20 LOCK NUT
5	H-1997	1	SNAP RING, SPIRLOCK	16	H-1989	6	BUSHING, BALL JOUNT
6	619-306P	2	PIVOT BLOCK PLATE	17	F-1765	1	1/4-20 X 3" GR. 5
7	F-1624	8	#6-32 X 3/8" SCREW SLOT	18	F-1020-01	1	1/4-20 X 3-1/2" GR. 5
8	636-140P	1	JOYSTICK TOP PLATE	19	F-1011-03	1	3/8-16 NUT, JAM
9	H-1947	1	GASKET, FOAM	20	H-2317	1	HANDLE GRIP, TAPERED
10	621-140A	1	JOYSTICK SHAFT ASSEMBLY	21	H-2465	2	1/4" SPACER

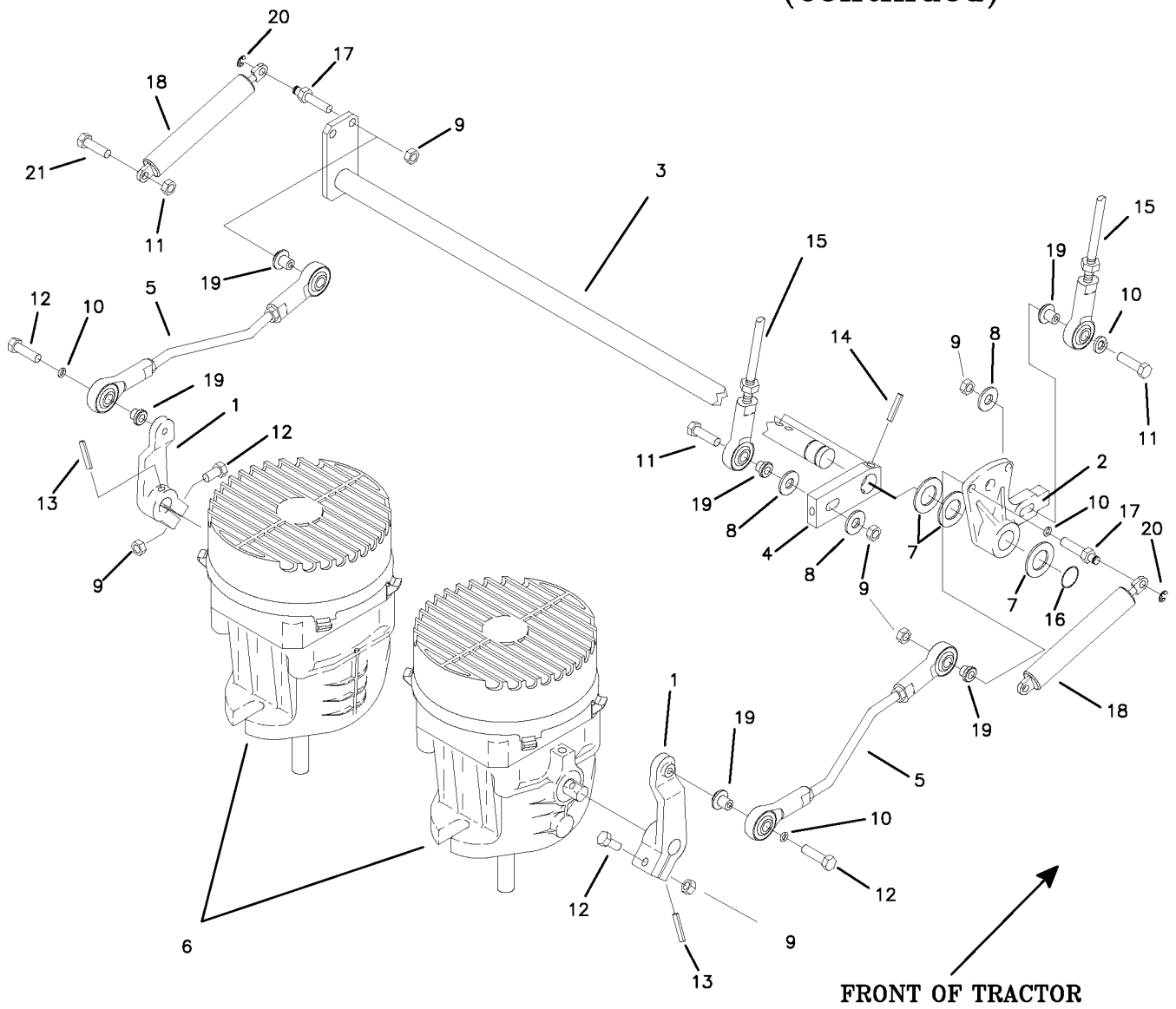
JOYSTICK HD STEERING CONTROL AND RELATED PARTS

NOTE; ITEM'S #2 AND #3 MUST BE REPLACED AT THE SAME TIME FOR MAXIMUM PERFORMANCE.



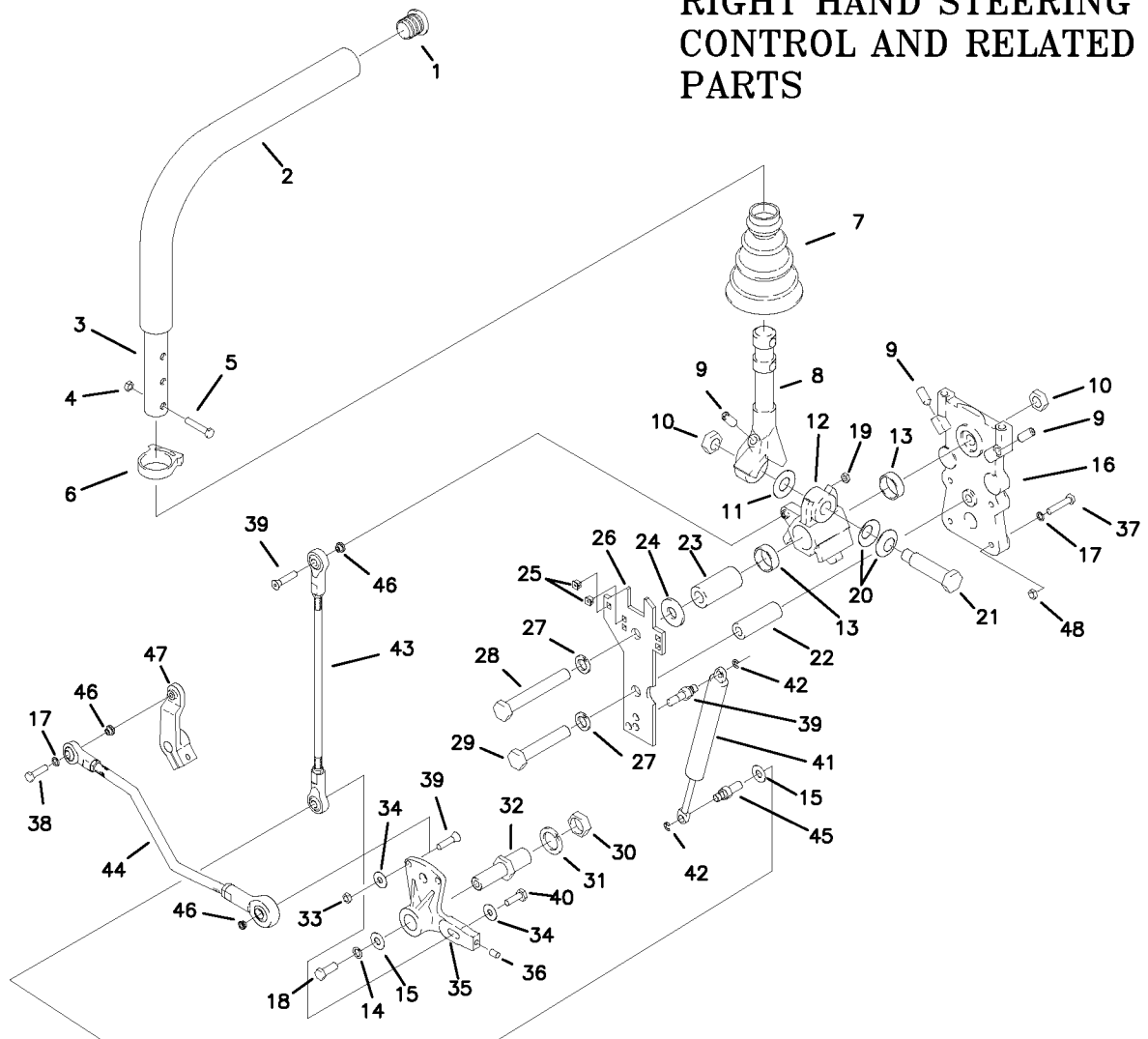
REF NO.	PART NO.	QTY.	DESCRIPTION	REF NO.	PART NO.	QTY.	DESCRIPTION
-	647-110A	1	JOYSTICK ASSEMBLY	12	F-1228	2	1/4-28 SET SCREW
1	647-105P	1	JOYSTICK YOKE	13	F-1015-05	3	1/4-20 X 1" HHCS GR. 5
2	647-104P	1	PIVOT SHAFT	14	F-1019-01	3	1/4" LOCK WASHER
3	647-101P	1	PIVOT BLOCK	15	F-1158	4	1/4-20 LOCK NUT
4	F-1120	1	BALL PLUNGER	16	H-1989	6	BUSHING, BALL JOUNT
5	F-1998	1	SNAP RING, SPIRLOCK	17	F-1020-01	1	1/4-20 X 3-1/2" GR. 5
6	647-106P	2	RETAINING PLATE	18	F-1011-03	1	3/8-16 NUT, JAM
7	F-1999	2	ROLL PIN	19	H-2317	1	HANDLE GRIP, TAPERED
8	659-129P	1	JOYSTICK TOP PLATE	20	H-2465	2	1/4" SPACER
9	H-1947	1	GASKET, FOAM	21	F-1740	2	SNAP RING
10	621-140A	1	JOYSTICK SHAFT ASSEMBLY	22	647-103P	2	PIVOT PIN
11	647-111A	1	BOOT, W/BUSHING	23	D-3784	2	BUSHING

JOYSTICK STEERING CONTROL AND RELATED PARTS (continued)



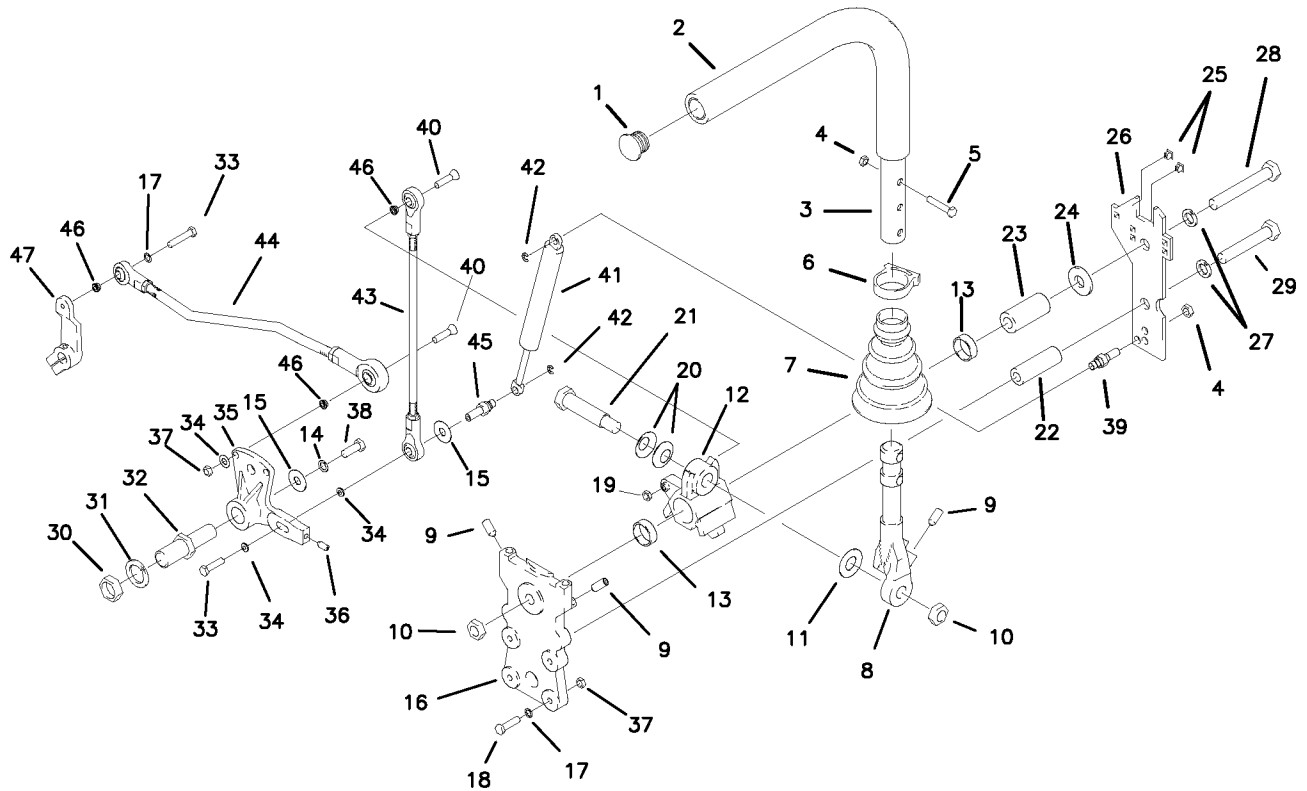
REF NO.	PART NO.	QTY.	DESCRIPTION	REF NO.	PART NO.	QTY.	DESCRIPTION
1	625-026P	2	SHIFT ARM	12	F-1015-05	4	1/4-20 X 1" GR. 5
2	638-027A	1	LINKAGE DISK ASSEMBLY	13	F-1725	2	ROLL PIN, 5MM X 26MM
3	636-078W	1	SHIFT ROD	14	F-1503	2	ROLL PIN, 3/16" X 1"
4	625-030P	1	SWIVEL ARM	15	647-082P	2	LOWER LINKAGE
5	647-083P	2	UPPER LINKAGE ROD	16	F-1739	1	SPIROL RING
6	-	-	SEE PAGE 3-22	17	638-029P	2	DAMPNER BOLT, 1/4-20
7	610-103P	3	THRUST WASHER	18	H-2467	2	DUAL ACTION DAMPER, LIGHT
8	F-1009-01	4	1/4" FLAT WASHER	19	H-2465	6	1/4 X 5/16 SHOULDER WASHER
9	F-1158	6	1/4-20 LOCK NUT	20	F-1610	2	E-RING
10	F-1019-01	2	1/4-20 LOCK WASHER	21	F-1716	2	1/4-20 X 1" GR.5
11	F-1716	2	1/4-20 X 1-1/2", GR.5				

RIGHT HAND STEERING CONTROL AND RELATED PARTS



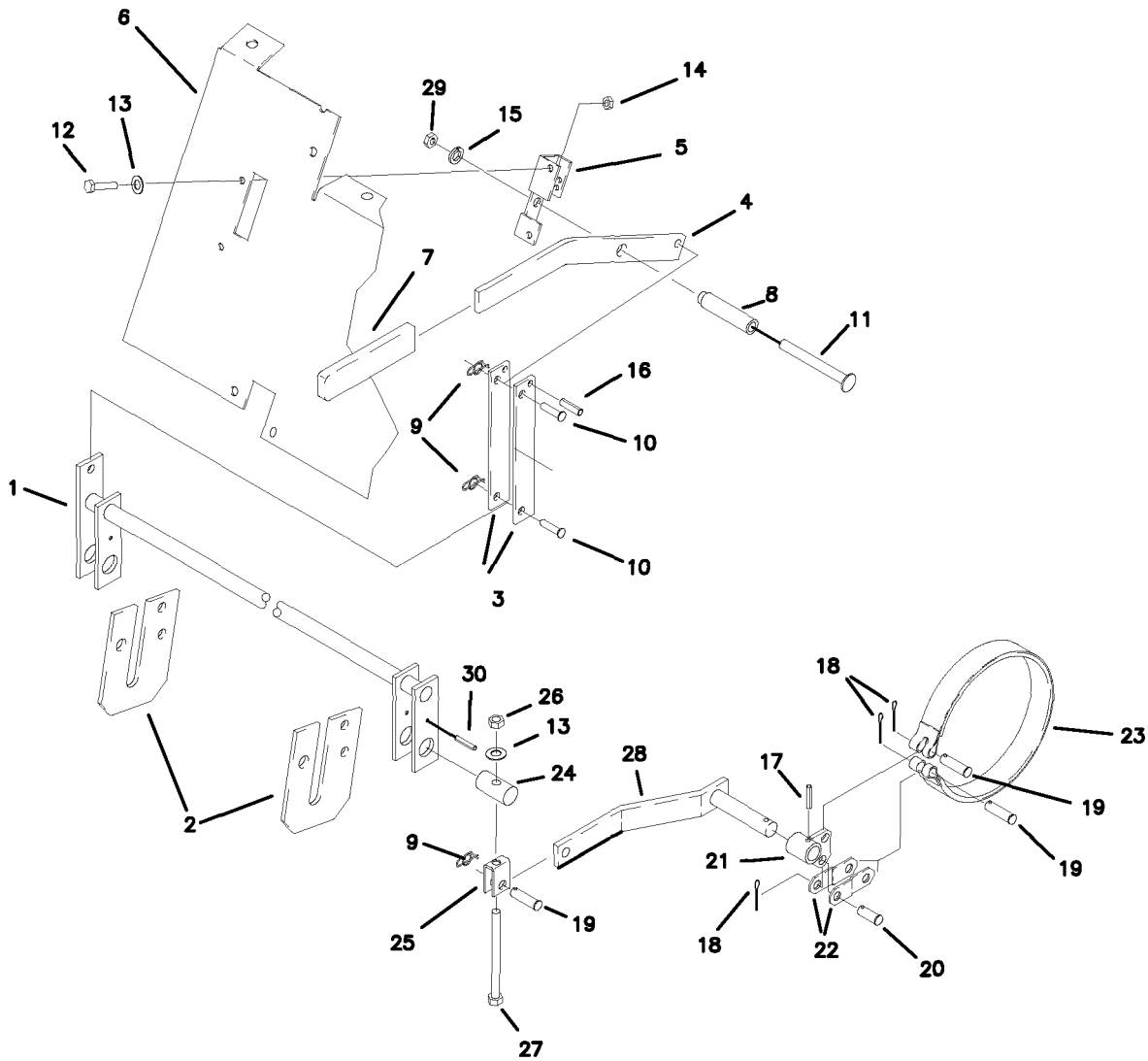
REF NO.	PART NO.	QTY.	DESCRIPTION	REF NO.	PART NO.	QTY.	DESCRIPTION
1	H-2080	1	END PLUG, 15/16" BLACK	25	F-1995	2	GROMMET, #10, SR-1200
2	H-2079	1	FOAM GRIP, 17"	-	F-1847	2	GROMMET, #4 X 1/4" SQ.
3	642-004A	1	CONTROL LEVER ASSEMBLY	26	636-167P	1	SIDE PLATE, DUALEVER
4	F-1125	2	5/16 LOCK NUT	27	F-1464	2	1/2" LOCK WASHER
5	F-1015-17	2	5/16-18 X 1-1/2" HHCS GR. 5	28	F-1828	1	1/2-13 X 3-1/2" HHCS GR. 5
6	H-2089	1	HOSE CLAMP	29	F-1439	1	1/2-13 X 3" HHCS GR. 5
7	H-2081	1	BOOT, TAPERED 1" CUFF	30	F-1011-07	1	3/4-10 PLAIN NUT
8	625-063P	1	LEVER, DUALEVER	31	F-1463	1	3/4" LOCK WASHER
9	F-1842	3	SETScrew, 5/16-18 X 3/4"	32	623-048P	1	LINKAGE PINTLE
10	F-1489	2	1/2-13 JAM NUT	33	F-1158	1	1/4-20 LOCK NUT
11	H-2116	1	WASHER, FIBER	34	F-1009-01	1	1/4" FLAT WASHER
12	638-033P	1	PIVOT BLOCK, DUALEVER	35	638-027A	1	LINKAGE DISK ASSEMBLY
13	D-3622	2	BEARING	36	F-1695	1	SETSCREW, 1/4-20 X 3/8"
14	F-1019-02	1	5/16" LOCK WASHER	37	F-1539	3	1/4-20 X 1-1/4" HHCS GR. 5
15	F-1009-02	2	WASHER, FLAT STD. 5/16"	38	F-1015-05	1	1/4-20 X 1" HHCS GR5
16	638-034P	1	BASE DUALEVER	39	F-1974	1	1/4-20 X 1-1/4" SOCK BOLT
17	F-1019-01	5	1/4" LOCK WASHER	40	F-1716	1	1/4-20 X 1-1/2" HHCS GR. 5
18	F-1015-05	1	1/4-20 X 1" HHCS GR. 5	41	H-2168	1	STEERING DAMPER
19	F-1748	1	1/4-20 THIN NYLOC NUT	42	F-1610	1	E-RING FOR 1/4" SHAFT
20	H-2115	2	WASHER, SPRING	43	647-082P	1	UPPER LINKAGE
21	625-070P	1	SHOULDER BOLT, 5/8" OD	44	647-083P	1	LOWER LINKAGE
22	625-067P	1	BUSHING, STAND OFF	45	663-051P	1	DAMPER BOLT, FEMALE
23	625-064P	1	BUSHING, PIVOT BLOCK	46	H-2465	3	1/4 X 5/16 SHOULDER WASHER
24	625-072P	1	WASHER, FLAT	47	625-026P	1	SHIFT ARM
				48	F-1158	4	1/4" LOCK NUT

LEFT HAND STEERING CONTROL AND RELATED PARTS



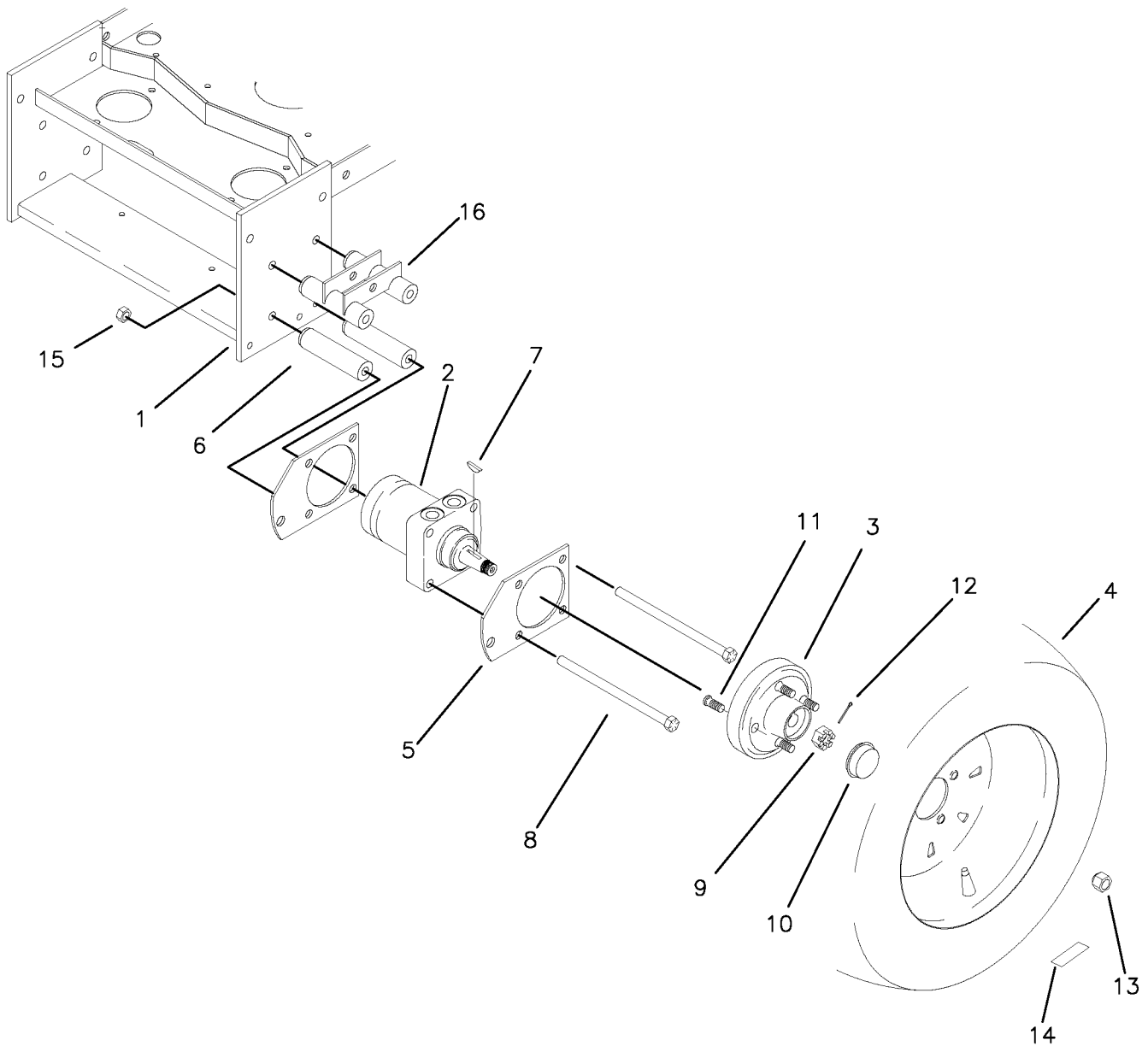
REF NO.	PART NO.	QTY.	DESCRIPTION	REF NO.	PART NO.	QTY.	DESCRIPTION
1	H-2080	1	END PLUG, 15/16" BLACK	25	F-1995	2	GROMMET, #10, SR-1200
2	H-2079	1	FOAM GRIP, 17"	-	F-1847	2	GROMMET, #4 X 1/4" SQ.
3	642-004A	1	CONTROL LEVER ASSEMBLY	26	636-167P	1	SIDE PLATE, DUALEVER
4	F-1125	3	5/16 LOCK NUT	27	F-1464	2	1/2" LOCK WASHER
5	F-1015-17	2	5/16-18 X 1-1/2" HHCS GR. 5	28	F-1828	1	1/2-13 X 3-1/2" HHCS GR. 5
6	H-2089	1	HOSE CLAMP	29	F-1439	1	1/2-13 X 3" HHCS GR. 5
7	H-2081	1	BOOT, TAPERED 1" CUFF	30	F-1011-07	1	3/4-10 PLAIN NUT
8	625-063P	1	LEVER, DUALEVER	31	F-1463	1	3/4" LOCK WASHER
9	F-1842	3	SETSCREW, 5/16-18 X 3/4"	32	623-048P	1	LINKAGE PINTLE
10	F-1489	2	1/2-13 JAM NUT	33	F-1716	1	1/4-20 X 1-1/2" HHCS GR. 5
11	H-2116	1	WASHER, FIBER	34	F-1009-01	4	1/4" FLAT WASHER
12	638-033P	1	PIVOT BLOCK, DUALEVER	35	638-027A	1	LINKAGE DISK ASSEMBLY
13	D-3622	2	BEARING	36	F-1695	1	SETSCREW, 1/4-20 X 3/8"
14	F-1019-02	1	5/16" LOCK WASHER	37	F-1158	4	1/4-20 LOCK NUT
15	F-1009-02	2	WASHER, FLAT STD. 5/16"	38	F-1015-14	1	5/16-18 X 7/8" HHCS GR. 5
16	638-034P	1	BASE DUALEVER	39	638-028P	1	DAMPER BOLT, 5-16-18 X 3/4"
17	F-1019-01	8	1/4" LOCK WASHER	40	F-1974	2	1/4-20 X 1-1/4" SOCK BOLT
18	F-1559	3	1/4-20 X 1-1/4" HHCS GR. 5	41	H-2168	1	STEERING DAMPER
19	F-1748	1	1/4-20 THIN NYLOC NUT	42	F-1610	2	E-RING FOR 1/4" SHAFT
20	H-2115	2	WASHER, SPRING	43	647-082P	1	UPPER LINKAGE
21	625-070P	1	SHOULDER BOLT, 5/8" OD	44	647-083P	1	LOWER LINKAGE
22	625-067P	1	BUSHING, STAND OFF	45	663-053P	1	DAMPER BOLT, FEMALE
23	625-064P	1	BUSHING, PIVOT BLOCK	46	H-2465	3	1/4" SHOULDER WASHER
24	625-072P	1	WASHER, FLAT	47	625-026P	1	SHIFT ARM

PARKING BRAKE ASSEMBLY & RELATED PARTS



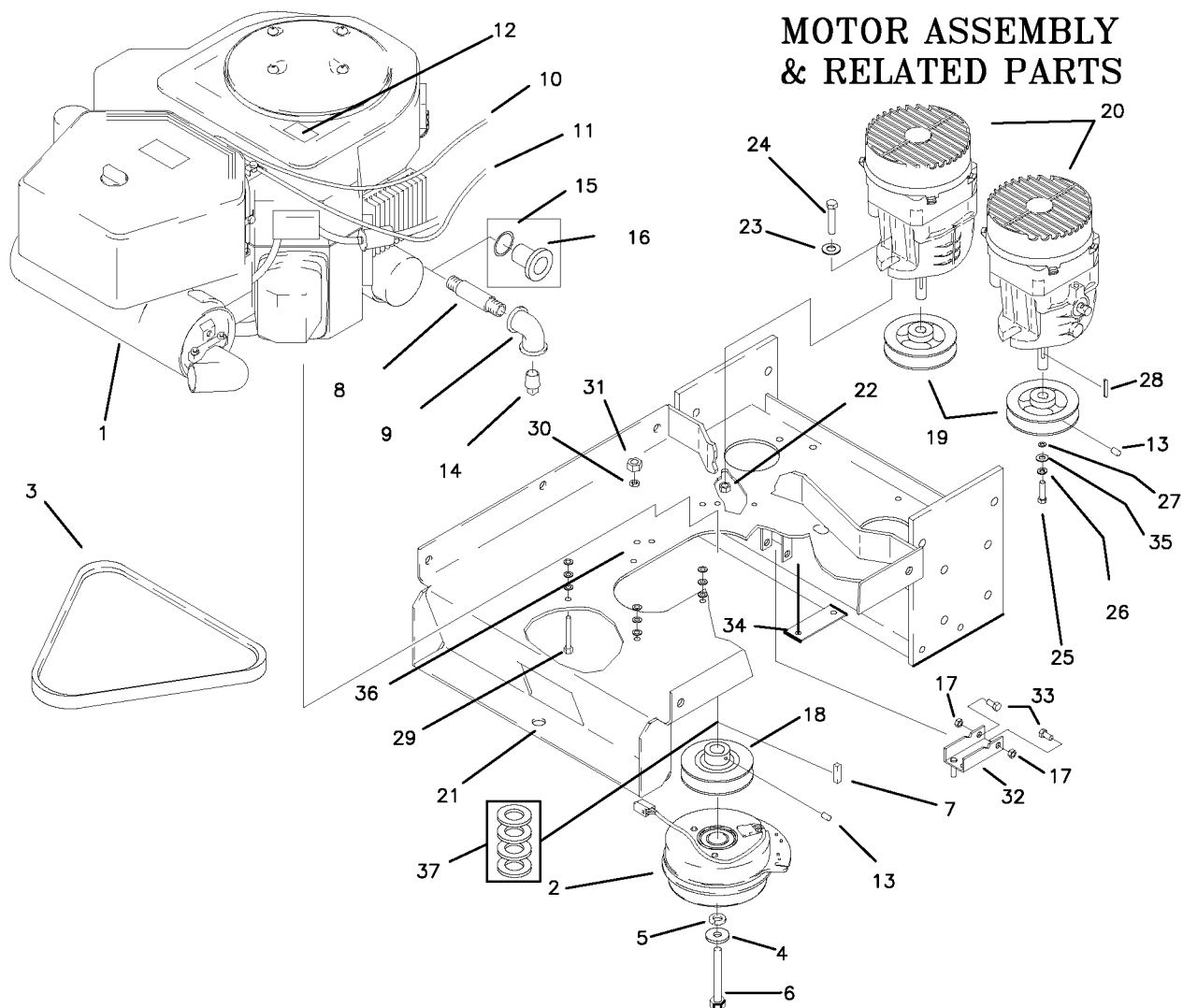
REF NO.	PART NO.	QTY.	DESCRIPTION	REF NO.	PART NO.	QTY.	DESCRIPTION
1	647-014W	1	BRAKE ROD WELDMENT	17	F-1553	2	3/16 X 7/8" ROLL PIN
2	642-042P	2	BRAKE ROD MOUNT	18	F-1491	3	COTTER PIN, 1/8 X 1"
3	642-058P	2	BRAKE LINK	19	F-1444	3	CLEVIS PIN, 3/8 X 1-5/16"
4	642-056P	1	BRAKE HANDLE	20	F-1438	1	CLEVIS PIN, 3/8 X 3/4"
5	642-054P	1	BRAKE SWITCH BRACKET	21	647-029W	1	BRAKE ARM SHORT, LH.
6	642-057P	1	FRONT PANEL	-	647-028W	1	BRAKE ARM SHORT, RH.
7	H-1926	1	HANDLE GRIP	22	647-010P	4	BRAKE ANCHOR LINK
8	642-027P	1	BRAKE PIVOT TUBE	23	D-3668	2	BRAKE BAND
9	F-1492	3	RUE RING	24	642-067P	2	TOP HANGER PIN
10	F-1443	2	5/16" PIN	25	647-030P	2	BRAKE YOKE LINKAGE
11	F-1982	1	3/8-16 X 3-1/2" CARRIAGE	26	F-1125	2	5/16-18 LOCK NUT
12	F-1538	2	1/4-20 X 3/4" GR. 5	27	F-1153	2	5/16-18 X 4.5" GR. 5
13	F-1009-01	4	1/4" FLAT WASHER	28	647-013W	1	BRAKE ARM WLDT, LONG
14	F-1005-01	2	1/4-20 LOCK NUT	29	F-1005-03	1	3/8-16 LOCK NUT
15	F-1019-03	1	3/8" LOCK WASHER	30	F-1604	2	ROLL PIN
16	F-1831	2	1/4 X 1" ROLL PIN				

GEAR MOTOR, WHEEL ASSEMBLY



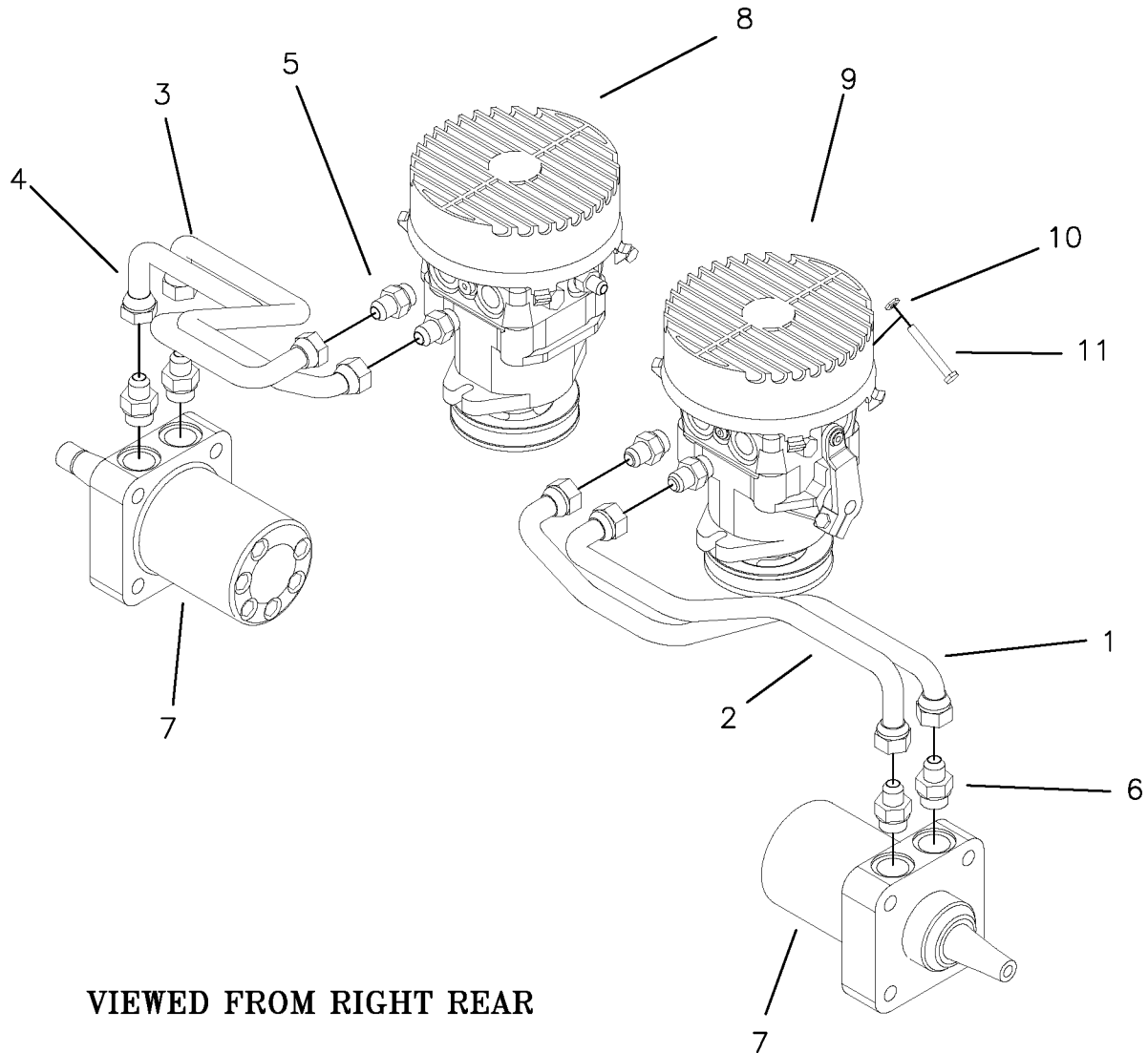
REF NO.	PART NO.	QTY.	DESCRIPTION	REF NO.	PART NO.	QTY.	DESCRIPTION
1	647-003W	1	MOTOR MOUNT	9	F-1909	2	NUT, 3/4-16 CASTLE NUT
2	D-3667	2	WHEEL MOTOR	10	H-1798	2	GREASE CAP
3	647-041P	2	WHEEL HUB W/STUDS	11	F-1654	8	WHEEL STUD, (REPLACEMENT)
4	D-3669	2	TIRE/WHEEL ASSEMBLY	12	H-1376	2	COTTER PIN, 1/8 X 1-1/2"
5	647-017P	4	BRAKE MOUNT PLATE	13	F-1499	8	LUG NUT, 1/2-20 X 60 DEG.
6	647-039P	4 (8)	SPACER, LONG (TWINSTICK)	14	P-10877	2	DECAL, TIRE PRESSURE
7	D-1004-01	1	KEY, 1/4 X 1" WOODRUFF	15	F-1005-05	8	1/2-13 LOCK NUT
8	F-1908	8	CAPSCREW, 1/2-13 X 9" GR. 8	16	647-092W	2	SPACER WLDT (JOYSTICK ONLY)

MOTOR ASSEMBLY & RELATED PARTS



REF NO.	PART NO.	QTY.	DESCRIPTION	REF NO.	PART NO.	QTY.	DESCRIPTION
1	M-5348	1	26 HP. KAWASAKI ENGINE	16	H-2285	1	DRAIN ADAPTER (KAWASAKI)
-	M-5335	1	27 HP. KOHLER ENGINE	17	F-1158	2	1/4-20 LOCK NUTS
-	M-5327	1	25 HP. KAWASAKI ENGINE	18	647-036P	1	MOTOR PULLEY
-	M-5353	1	30 HP. KOHLER ENGINE	19	647-035P	2	HYDRO PUMP PULLEY
2	E-6247	1	CLUTCH, MAGSTOP 1-1/8"	20	-	-	SEE PAGE 3-22
-	E-6338	1	CLUTCH, 200 FT. LB.(72" BOSS)	21	647-005W	1	MOTOR MOUNT
3	D-3777	1	HYDRO PUMP BELT	22	F-1005-03	4	NUT, 3/8-16 STOVER
4	606-347P	1	WASHER	23	F-1009-03	4	3/8 FLAT WASHER
5	F-1019-04	1	7/16 LOCK WASHER	24	F-1307	4	3/8-16 X 1-1/4" GR. 5
6	F-1766	1	7/16-20 X 3-1/4"	25	F-1737	2	6MM X 16MM GR. 5
-	F-1904	1	7/16-20 X 2-1/2" (25HP KAW)	26	F-1738	2	6MM WASHER
-	F-1981	1	10-1.5MM X 75MM (26HP KAW)	27	620-187P	2	WASHER
7	621-113P	1	KEY, 1/4 SQ. X 1-1/4"	28	D-3541	2	KEY, 5MM.
8	H-1343	1	3/8 X 2" PIPE NIPPLE	29	F-1015-17	4	5/16-18 X 1-1/2" GR. 5
-	H-1089	1	3/8 X 2" PIPE NIPPLE (KAWASAKI)	-	F-1979	4	8-1.25MM X 25MM (26HP KAW)
9	H-1218	1	3/8" PIPE ELBOW	30	F-1019-02	4	5/16" LOCK WASHER
10	H-2287	1	CHOKE CABLE (KAWASAKI)	31	F-1011-02	4	5/16-18 PLAIN NUT
-	H-2404	1	CHOKE CABLE (27 HP KOHLER)	32	647-081W	1	CLUTCH STOP WELDMENT
11	H-2236	1	THROTTLE CABLE	33	F-1538	2	1/4-20 X 3/4" GR. 5
-	H-2286	1	THROTTLE CABLE (KAWASAKI)	34	647-085P	1	GROUND STRAP
12	P-10077	1	DECAL, "CLEAN"	35	F-1736	2	WASHER
13	F-1228	3	SETScrew, 1/4" X 1/4"	36	606-348P	12	WASHER, AIR COOLED KAW. ONLY
14	H-1380	1	PLUG, 3/8" NPT	37	311-143P	4	WASHER, AIR COOLED KAW. ONLY
15	D-3446	1	3/4-16 PORT O-RING (KAWASAKI)				

HIGH PRESSURE LINES & FITTINGS

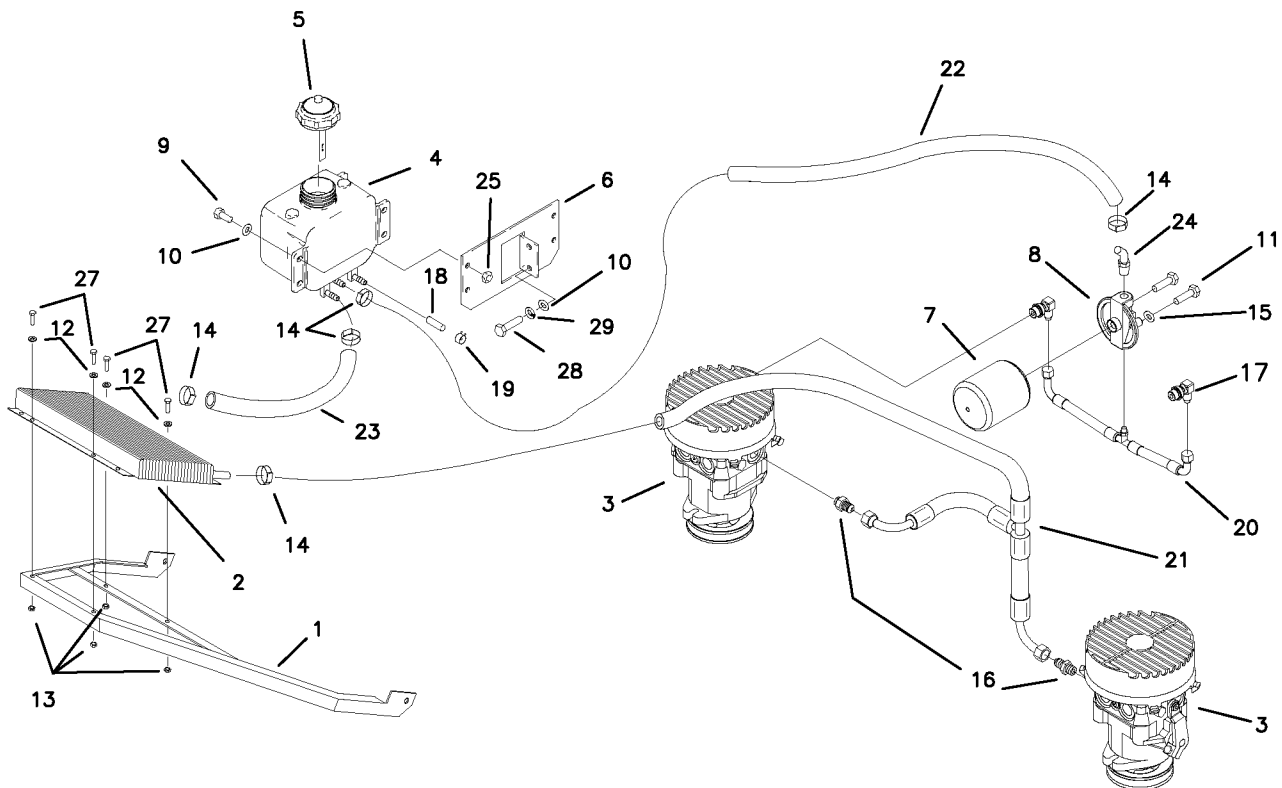


VIEWED FROM RIGHT REAR

REF NO.	PART NO.	QTY.	DESCRIPTION	REF NO.	PART NO.	QTY.	DESCRIPTION
1	H-2481	1	TUBE ASS'Y, RH. FORWARD	7	D-3667	2	WHEEL MOTOR
2	H-2482	1	TUBE ASS'Y, RH. REVERSE	8	D-3779-01	1	HYDRO PUMP, 10CC
3	H-2483	1	TUBE ASS'Y, LH. FORWARD	-	D-3780-01	1	HYDRO PUMP, 12CC, SR-1200
4	H-2484	1	TUBE ASS'Y, LH. REVERSE	9	D-3779-02	1	HYDRO PUMP, 10CC
5	H-2436	4	FITTING, STRAIGHT, 3/4-16	-	D-3780-02	1	HYDRO PUMP, 12CC, SR-1200
6	H-2319	4	FITTING, STRAIGHT, 7/8-14	10	*F-1158	2	1/4-20 LOCK NUT
				11	*F-1077	2	1/4-20 X 2" GR. 5 (FOR HANDLE)

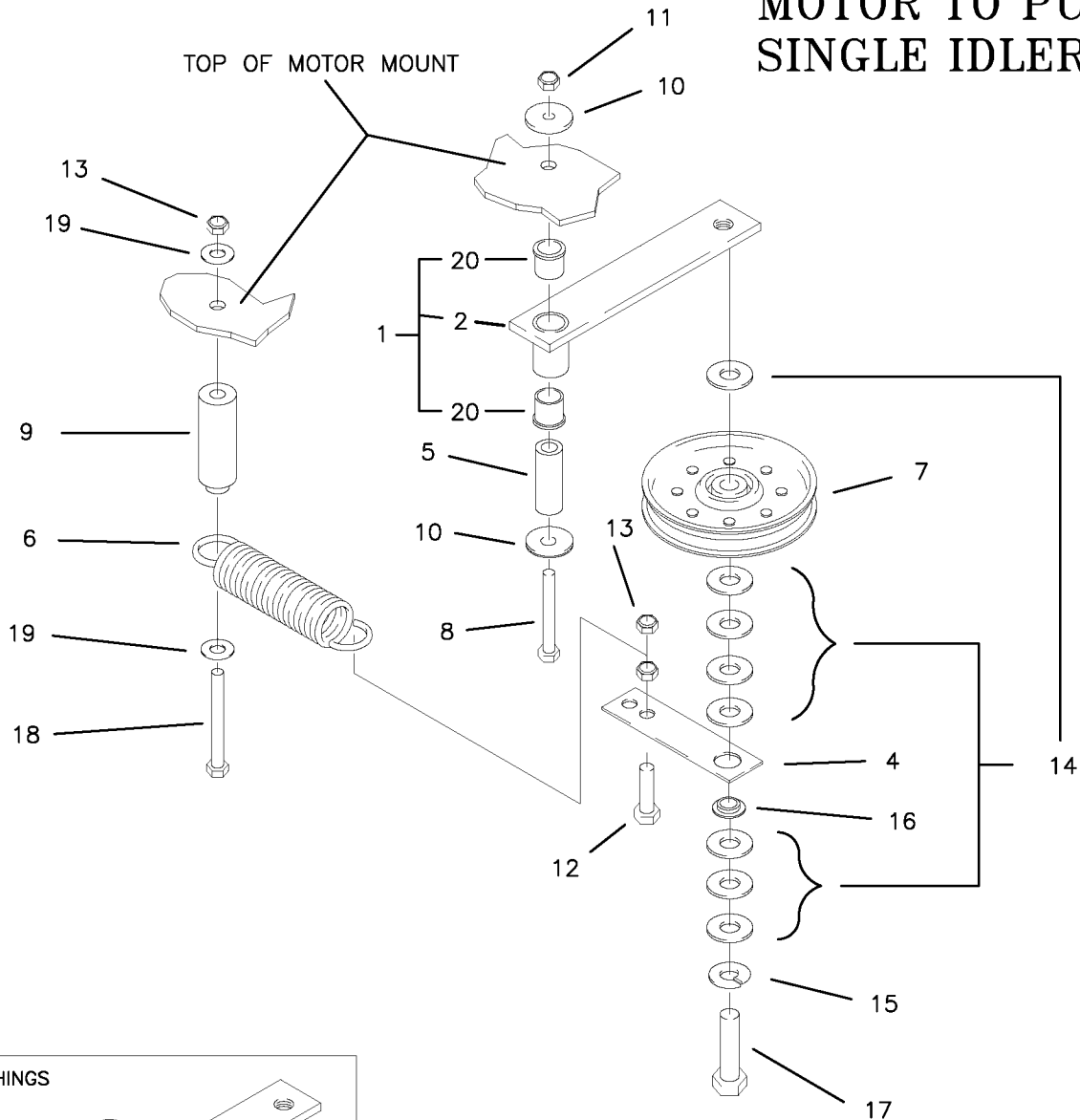
*NOT USED ON SR-1200 SERIES

OIL RETURN LINES & COOLER ASSEMBLY



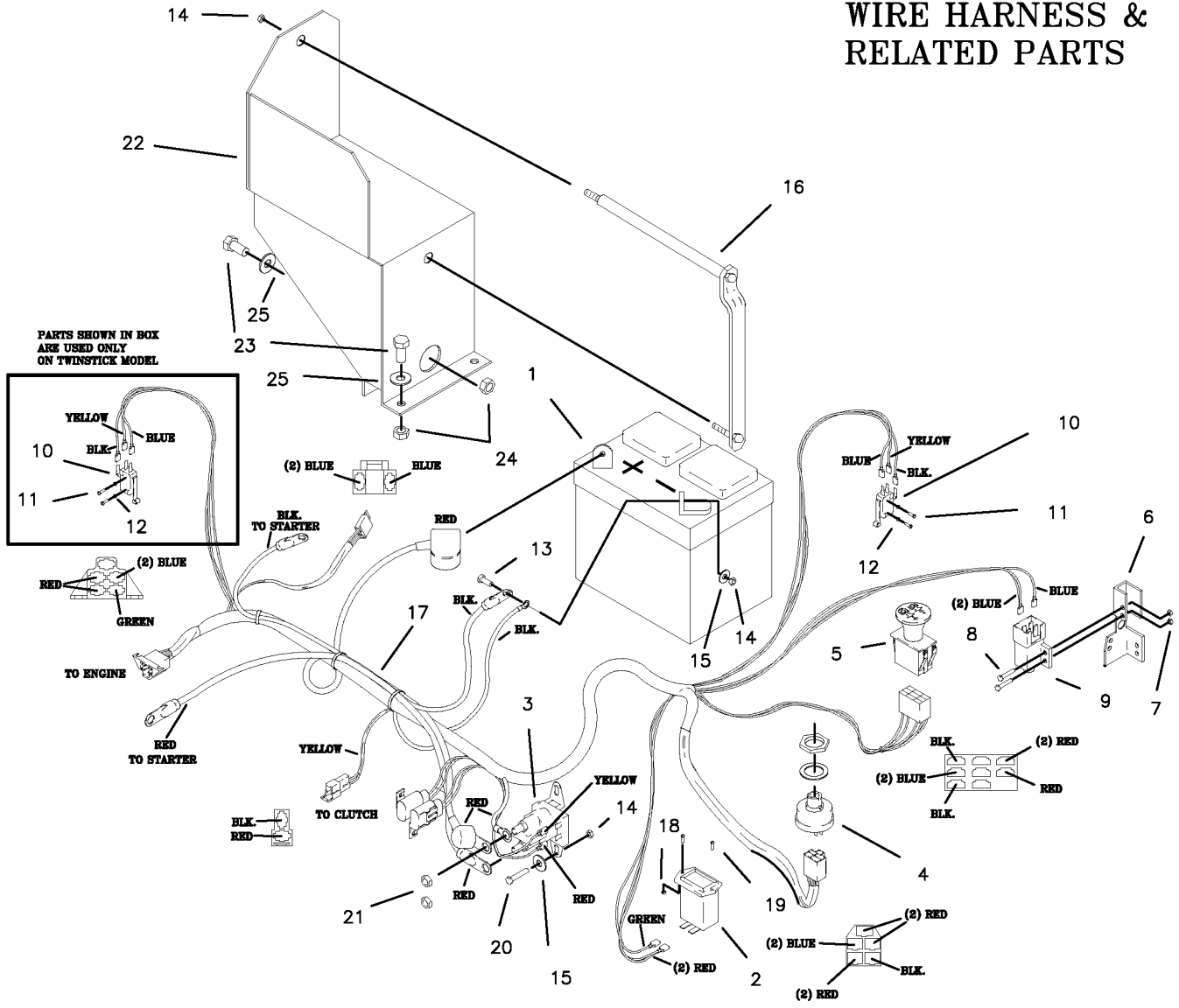
REF NO.	PART NO.	QTY.	DESCRIPTION	REF NO.	PART NO.	QTY.	DESCRIPTION
1	647-046W	1	BRACKET, OIL COOLER	16	H-2330	3	ADAPTER
2	H-2325	1	OIL COOLER	17	H-2331	2	ELBOW
3	-	-	SEE PAGE 3-22	18	H-2327	1	CAPLUG, 3/8 X 1"
4	H-2230	1	TANK, 2 QUART	19	H-1687	1	HOSE CLAMP
5	644-035A	1	CAP, HYDRO TANK	20	H-2479	1	HOSE, SUCTION
6	642-052P	1	TANK MOUNT BRACKET	21	H-2480	1	HOSE, RETURN
7	H-2026	1	FILTER, HYDRO	22	H-2438	1	HOSE, 24" HI-TEMP
8	H-2061	1	FILTER BASE	23	H-2478	1	HOSE, 18" HI-TEMP
9	F-1546	4	5/16 X 3/4 GR. 5	24	H-1859	1	1/4 PIPE & HOSE BARB 90°
10	F-1009-02	6	5/16 FLAT WASHER	25	F-1125	4	5/16-18 STOVER NUT
11	F-1015-05	2	1/4-20 X 1" GR. 5	26	F-1019-02	2	5/16- LOCK WASHER
12	F-1009-01	4	1/4" FLAT WASHER	27	F-1538	4	1/4-20 X 3/4" GR. 5
13	F-1158	4	1/4" LOCK NUT	28	F-1394	2	3/8-16 X 1" CAPSCREW
14	H-2282	5	HOSE CLAMP	29	F-1019-03	2	3/8 LOCKWASHER
15	F-1019-01	2	LOCK WASHER				

MOTOR TO PUMP SINGLE IDLER

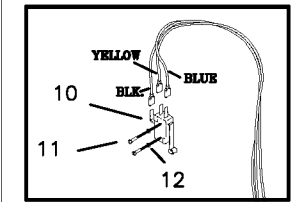


REF NO.	PART NO.	QTY.	DESCRIPTION	REF NO.	PART NO.	QTY.	DESCRIPTION
1	622-167A	1	SINGLE IDLER ASSEMBLY	11	F-1125	1	5/16 LOCK NUT
2	622-051W	1	SINGLE IDLER WELDMENT	12	F-1445	1	3/8-24 X 1" HHCS GR. 5
3	D-3573	2	BUSHING, DX 5/8 X 3/4"	13	F-1573	3	3/8-24 LOCK NUT
4	622-047P	1	SPRING EXTENSION	14	F-1521	8	1/2" FLAT WASHER
5	621-103P	1	MOUNTING PIN	15	F-1464	1	1/2" LOCK WASHER
6	H-2092	1	SPRING	16	622-048P	1	IDLER STAND
7	D-3617	1	FLAT IDLER PULLEY	17	F-1293	1	1/2-13 X 2" GR. 5
8	F-1820	1	5/16-18 X 2-1/4" HHCS GR. 5	18	F-1066	1	3/8-16 X 4" GR.5
9	642-163P	1	SPRING ANCHOR BUSHING	19	F-1009-03	2	3/8 FLAT WASHER
10	F-1009-02	2	5/16" FLAT WASHER	20	D-3730	2	5/8 BORE BUSHING

WIRE HARNESS & RELATED PARTS

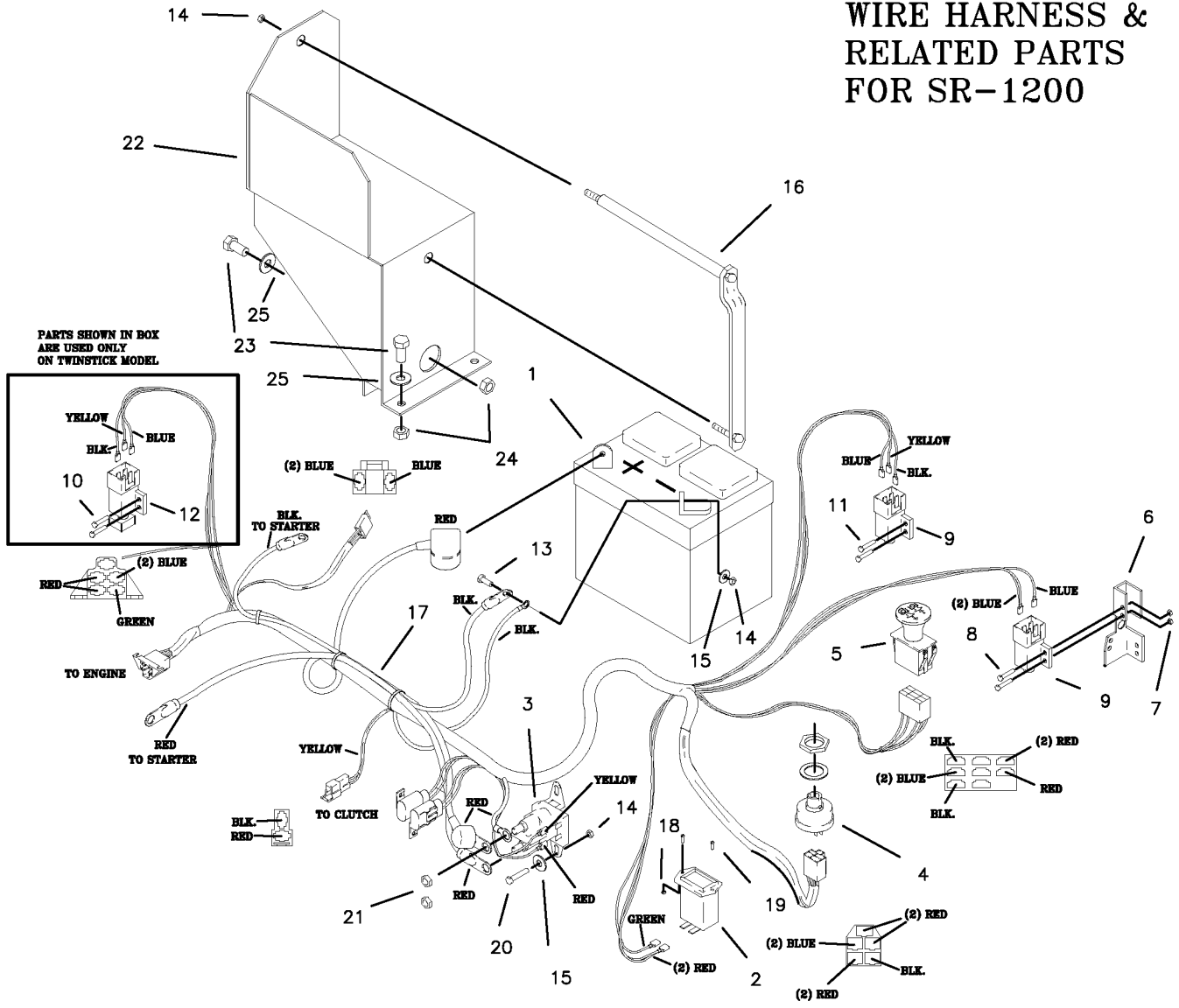


PARTS SHOWN IN BOX ARE USED ONLY ON TWINSTICK MODEL



REF NO.	PART NO.	QTY.	DESCRIPTION	REF NO.	PART NO.	QTY.	DESCRIPTION
1	E-6271	1	BATTERY	15	F-1009-01	4	1/4" FLAT WASHER
2	E-5878	1	HOUR METER	16	647-006A	1	BATTERY HOLD DOWN
3	E-6054	1	SOLENOID	17	E-6340	1	WIRE HARNESS
4	E-5873	1	START SWITCH	18	F-1535	2	6-32 LOCK NUT
5	E-6296	1	CLUTCH SWITCH	19	F-1054	2	6-32 X 5/8" MACHINE SCREW
6	642-054P	1	BRAKE SWITCH BRACKET	20	F-1015-02	2	1/4-20 X 5/8" GR. 5
7	F-1448	2	8-32 LOCK NUT	21	F-1567	2	5/16-24 NUT
8	F-1022-26	2	8-32 X 5/8 SCREW		E-6281	1	COVER (KEY SWITCH) -NOT SHOWN-
9	E-6297	1	BRAKE SWITCH		E-6307	1	OIL PRESSURE SWITCH KAWASAKI ONLY (NOT SHOWN)
10	E-6074	1	SWITCH, SPDT MINI		E-6388	1	WIRE HARNESS ADAPTER LIQUID KAW. ONLY (NOT SHOWN)
-	E-6074	2	USED ON TWINSTICK				
11	F-1396	2	4-40 X 3/4 SCREW	22	647-008W	1	BATTERY BOX
-	F-1396	4	USED ON TWINSTICK	23	F-1015-15	3	5/16-18 X 1" GR. 5
12	F-1621	2	STAR WASHER	24	F-1125	3	5/16-18 LOCK NUT
-	F-1621	4	USED ON TWINSTICK	25	F-1009-02	3	5/16 FLAT WASHER
13	F-1538	2	1/4-20 X 3/4" GR. 5				
14	F-1158	5	1/4-20 LOCK NUT				

WIRE HARNESS & RELATED PARTS FOR SR-1200



PARTS SHOWN IN BOX ARE USED ONLY ON TWINSTICK MODEL

REF NO.	PART NO.	QTY.	DESCRIPTION	REF NO.	PART NO.	QTY.	DESCRIPTION
1	E-6271	1	BATTERY	15	F-1009-01	4	1/4" FLAT WASHER
2	E-5878	1	HOUR METER	16	647-006A	1	BATTERY HOLD DOWN
3	E-6054	1	SOLENOID, USED ONLY IF STARTER DOES NOT HAVE SOLENOID	17	E-6400	1	WIRE HARNESS, SR-1200
4	E-5873	1	START SWITCH	18	F-1535	2	6-32 LOCK NUT
5	E-6296	1	CLUTCH SWITCH	19	F-1054	2	6-32 X 5/8" MACHINE SCREW
6	642-054P	1	BRAKE SWITCH BRACKET	20	F-1015-02	2	1/4-20 X 5/8" GR. 5
7	F-1448	2	8-32 LOCK NUT	21	F-1567	2	5/16-24 NUT
8	F-1022-26	2	8-32 X 5/8 SCREW	E-6281		1	COVER (KEY SWITCH) -NOT SHOWN-
9	E-6297	2	PLUNGER SWITCH, JOYSTICK	E-6307		1	OIL PRESSURE SWITCH KAWASAKI ONLY (NOT SHOWN)
-	E-6297	1	PLUNGER SWITCH, DUAL LEVER	E-6388		1	WIRE HARNESS ADAPTER KAWASAKI ONLY (NOT SHOWN)
10	F-1994	4	#10 X 5/8" SCREW, DUAL LEVER	22	647-008W	1	BATTERY BOX
11	F-1993	2	10-32 X 5/8" THD FORM SCREW ON DUAL LEVER	23	F-1015-15	3	5/16-18 X 1" GR. 5
-	F-1993	4	ON DUAL LEVER	24	F-1125	3	5/16-18 LOCK NUT
12	647-112A	2	SWITCH BLOCK ASS'Y, DUAL LEVER	25	F-1009-02	3	5/16 FLAT WASHER
13	F-1538	2	1/4-20 X 3/4" GR. 5				
14	F-1158	5	1/4-20 LOCK NUT				